

# **Kansas City Public Schools and Department of Elementary and Secondary Education**

## **Regional School Improvement Team Meeting**

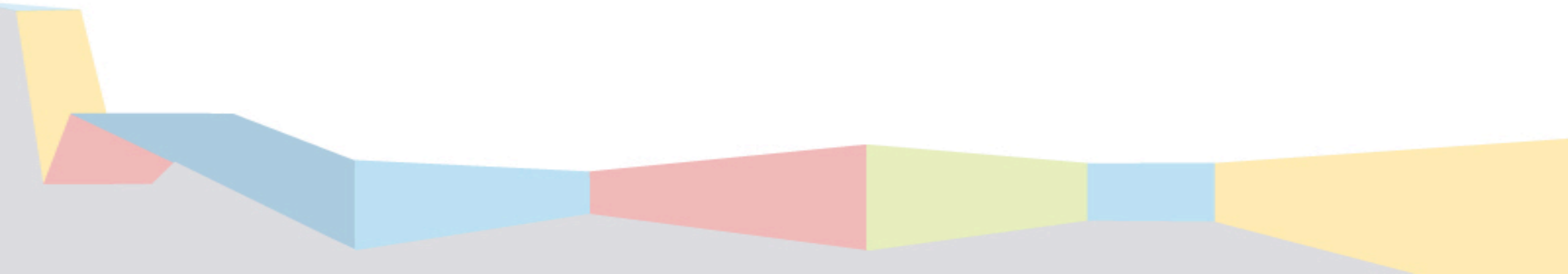
Tuesday, April 28, 2015

**KANSAS CITY**  
PUBLIC SCHOOLS

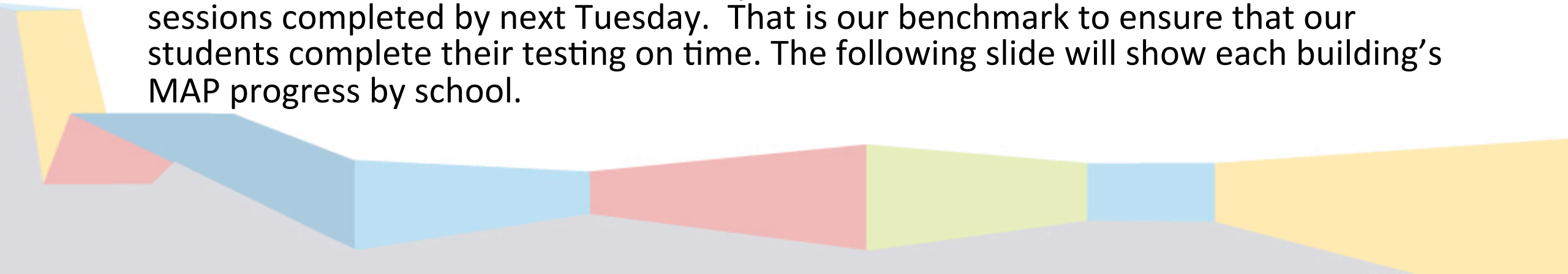


# MAP/EOC Update

Security, Test Locations, and Timeline



# Security, Test Locations and Timeline

- Every building has a Site Testing Coordinator and testing committee to ensure our testing environment is secure and that every teacher administering the MAP has gone through the TAM and signed the test security agreement.
  - Schools were provided with partitions to place around every computer and laptop.
  - Every school identified four rooms for testing. The IT department created a help desk phone line just for MAP/EOC technology issues.
  - Every school has a district staff person who walked their school(s) during the MAP assessment and completed the Initial Building Visit Checklist form and will continue to walk their school(s) to complete the Test Observation Checklist.
  - The official MAP window closes on May 8th. Most schools will have 50% of their test sessions completed by next Tuesday. That is our benchmark to ensure that our students complete their testing on time. The following slide will show each building's MAP progress by school.
- 
- A decorative graphic at the bottom of the slide consisting of several overlapping, semi-transparent geometric shapes in shades of yellow, light blue, and light red, creating a modern, abstract design.

# Progress of MAP Assessments

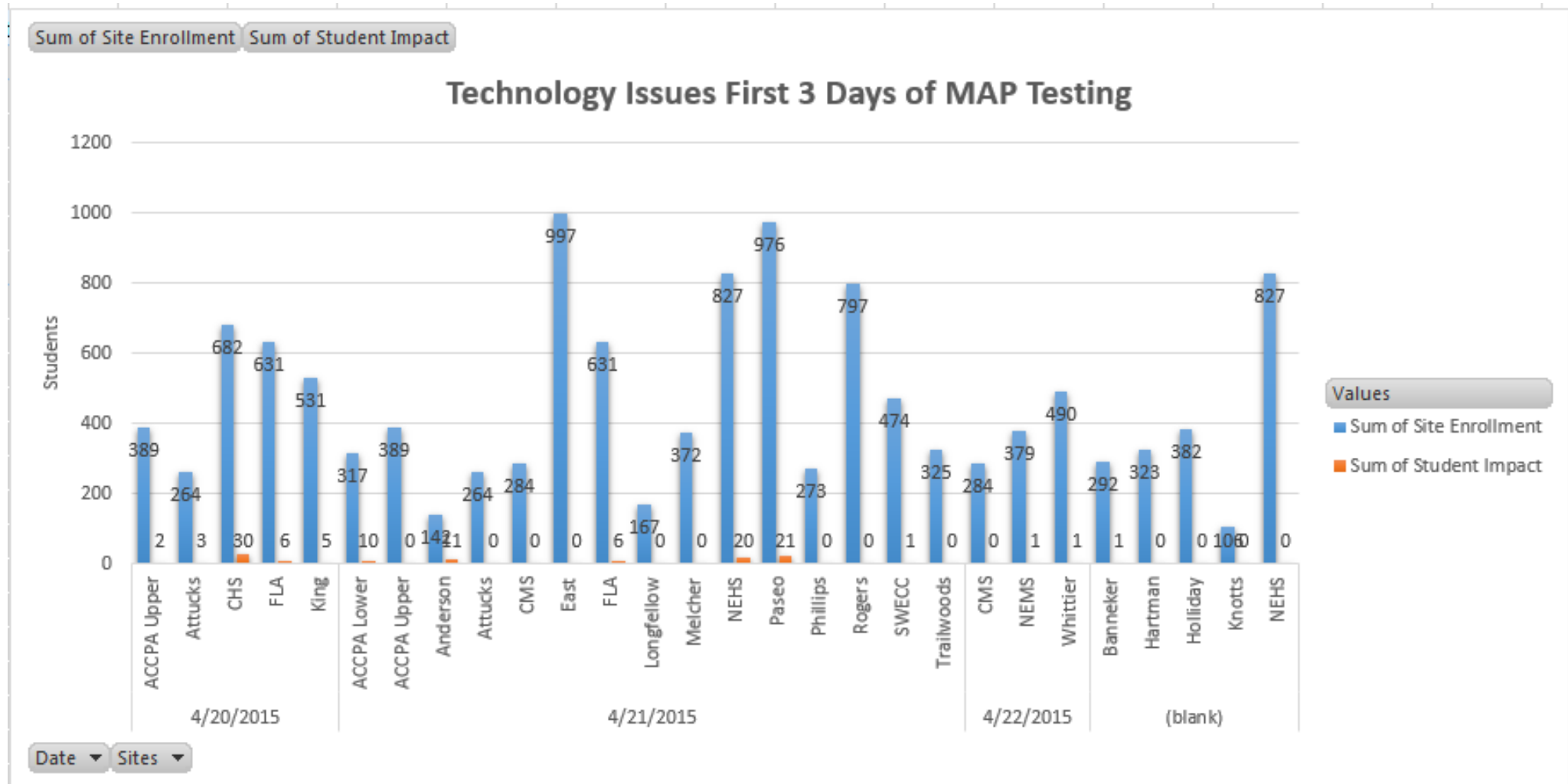
MAP Progress as of Wednesday April 22, 2015

School	% of Testing Sessions Completed
AC PREP ELEMENTARY	49.1%
AFRICAN CENT COLLEGE PREP AC	77.4%
ATTUCKS ELEM.	44.9%
B. BANNEKER ELEM.	22.3%
BORDER STAR MONTESSORI	29.6%
CARVER DUAL LANGUAGE SCHOOL	28.2%
CENTRAL ACADEMY OF EXCELLENC	55.2%
CENTRAL MIDDLE SCHOOL	41.3%
EAST HIGH SCHOOL	58.3%
FAXON ELEMENTARY	23.0%
FOREIGN LANGUAGE ACADEMY	31.9%
GARFIELD ELEM.	61.3%
GEORGE MELCHER ELEM.	41.0%
GLADSTONE ELEM.	52.9%
HOLLIDAY MONTESSORI	37.6%
JAMES ELEM.	48.4%
JOHN T. HARTMAN ELEM.	24.3%
LINCOLN COLLEGE PREP.	94.1%
LONGFELLOW ELEM.	43.4%
M. L. KING ELEMENTARY	37.7%
NORTHEAST HIGH	35.7%
NORTHEAST MIDDLE SCHOOL	51.2%
PASEO ACAD. OF PERFORMING AR	35.8%
PHILLIS WHEATLEY ELEM.	62.3%
PITCHER ELEM.	26.7%
PRIMITIVO GARCIA ELEM.	45.4%
ROGERS ELEMENTARY	61.5%
SATCHEL PAIGE ELEM.	26.2%
SOUTHWEST EARLY COLLEGE CAMP	56.0%
TRAILWOODS ELEM.	34.8%
TROOST ELEM.	42.0%
WENDELL PHILLIPS ELEM.	31.7%
WHITTIER ELEM.	27.6%
Grand Total	45.6%

# 2014-2015 EOC Test Window

Course	Test Window
Government/Algebra 2	April 20 <sup>th</sup> – April 28 <sup>th</sup>
Biology	April 23 <sup>rd</sup> – May 1
Algebra 1	April 29 <sup>th</sup> – May 7
English 10	April 28 <sup>th</sup> – May 6

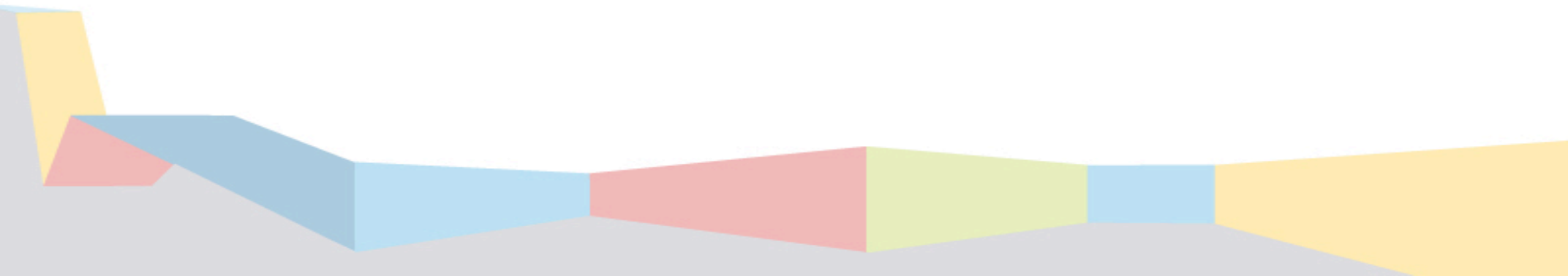
# Technology Issues



# Questions?

# RTI Prezi

- [http://prezi.com/sdb0mjzza2n/?utm\\_campaign=share&utm\\_medium=copy&rc=ex0share](http://prezi.com/sdb0mjzza2n/?utm_campaign=share&utm_medium=copy&rc=ex0share)



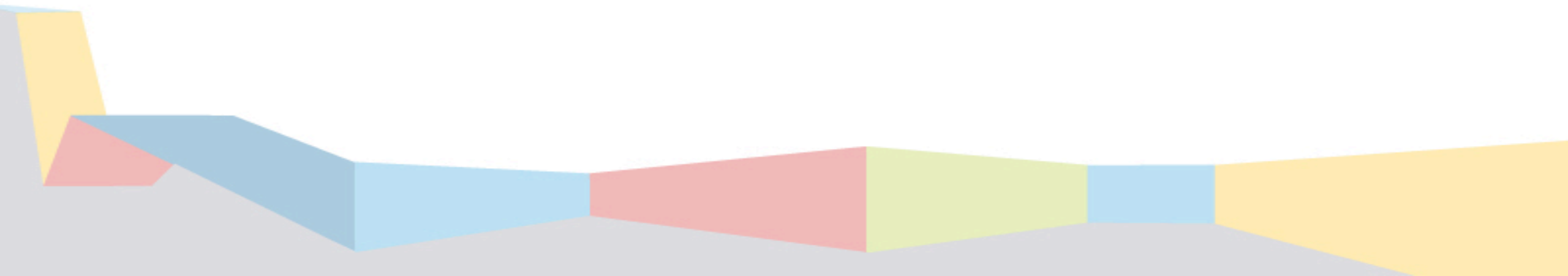


# Questions?

# Males of Color (MOC) Initiative

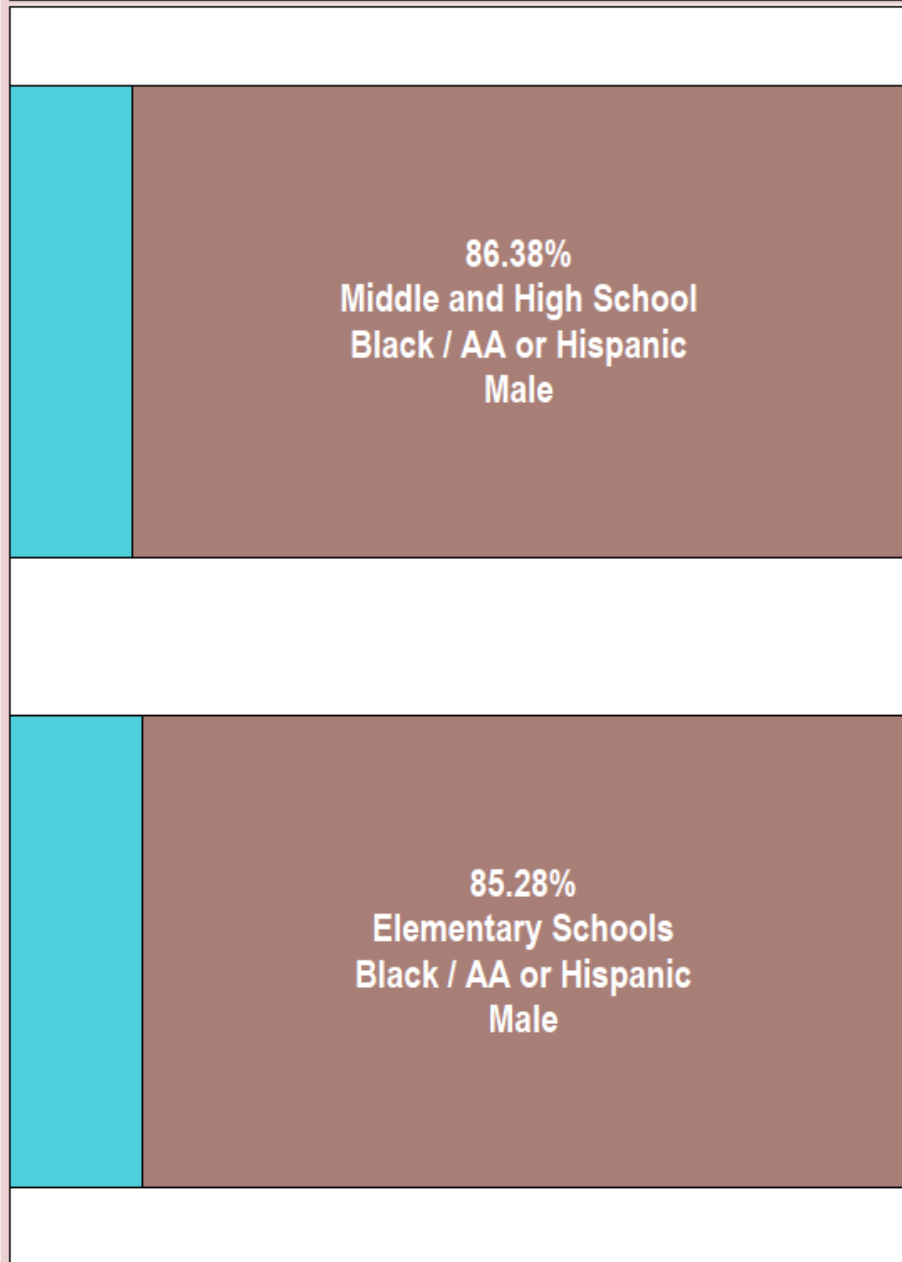


# Males of Color Enrollment



# KCPS School Enrollments and MOC Percentages by School Level

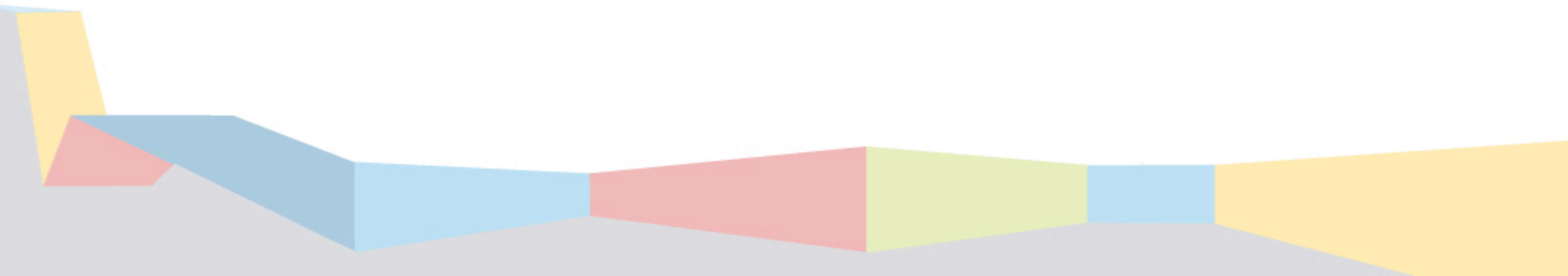
2013-2014



2014-2015

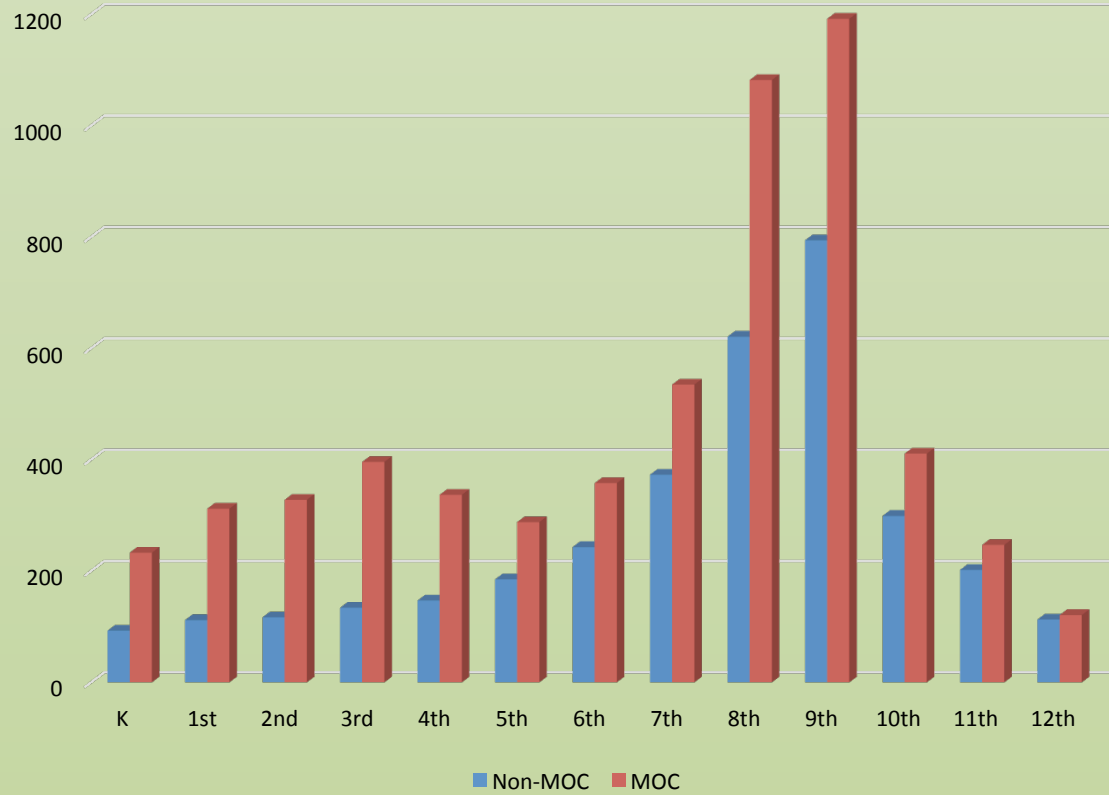


# Males of Color Discipline Data

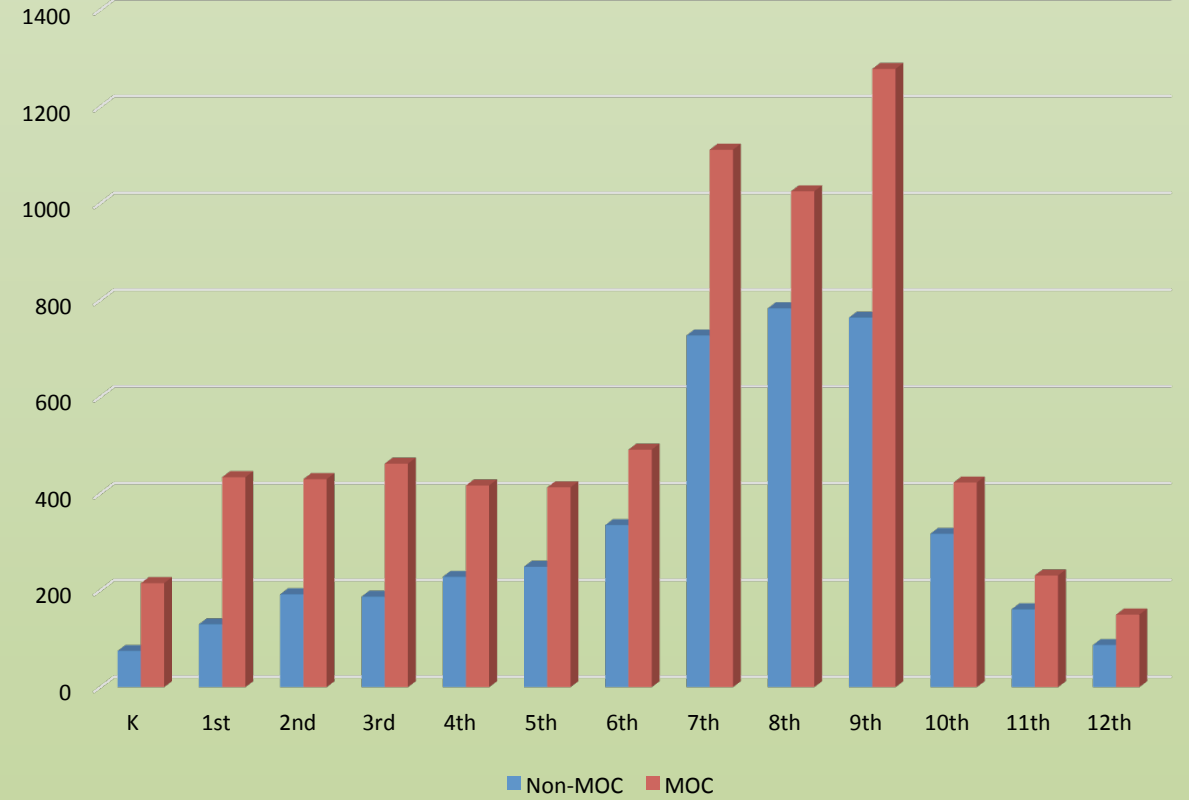


# KCPS Discipline Infractions

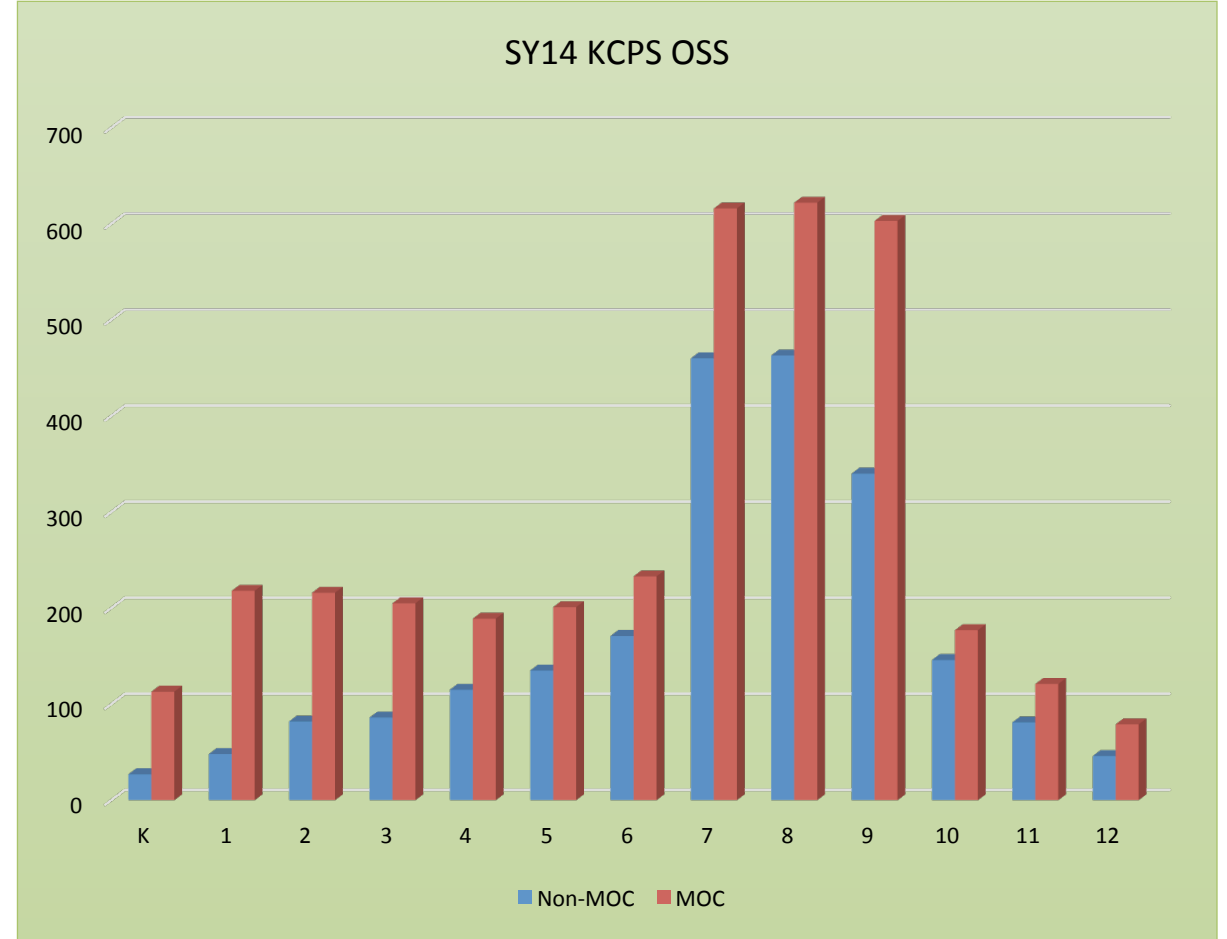
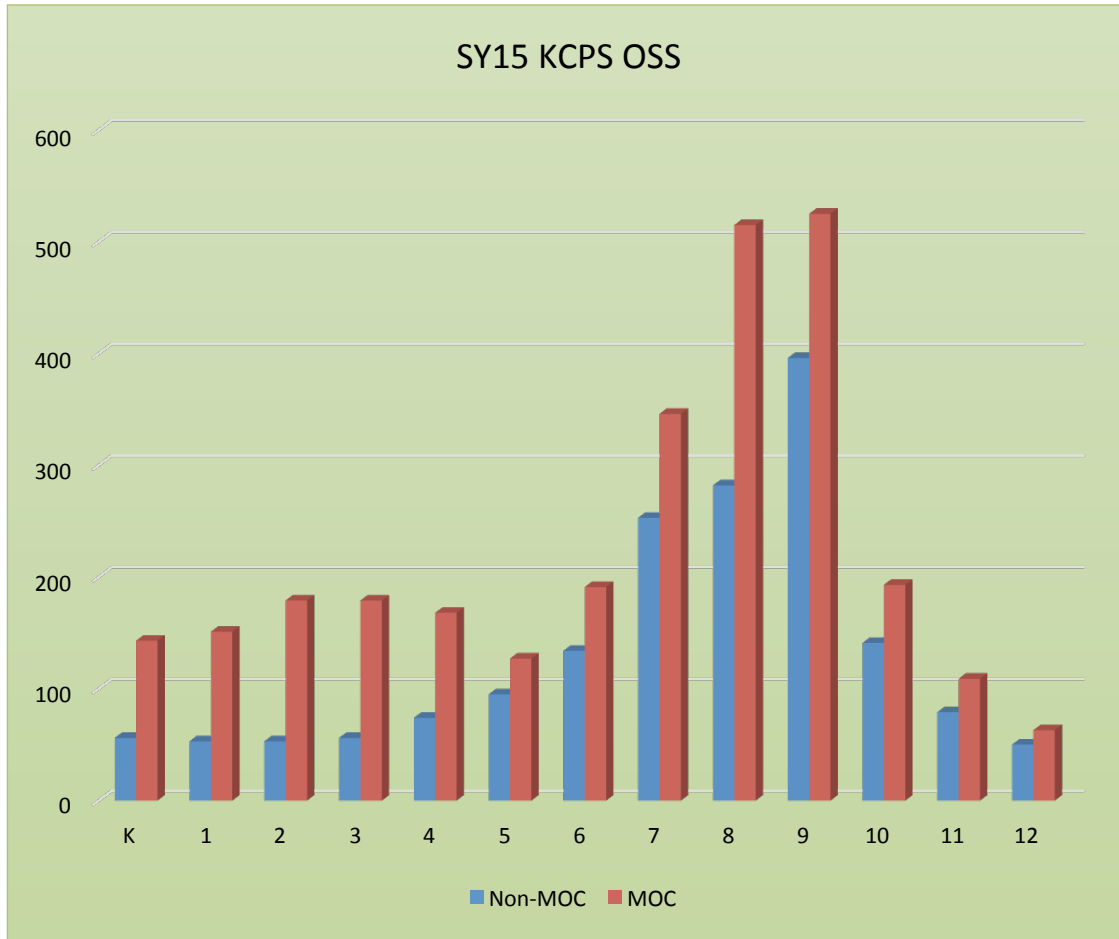
SY15 KCPS Discipline Incidents



SY14 KCPS Discipline Incidents



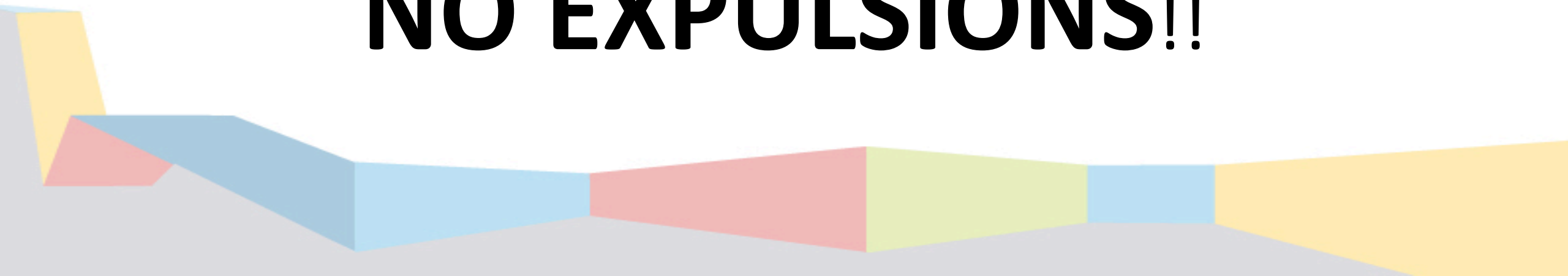
# Out of School Suspensions



# Expulsions in 2014-15 Eliminated

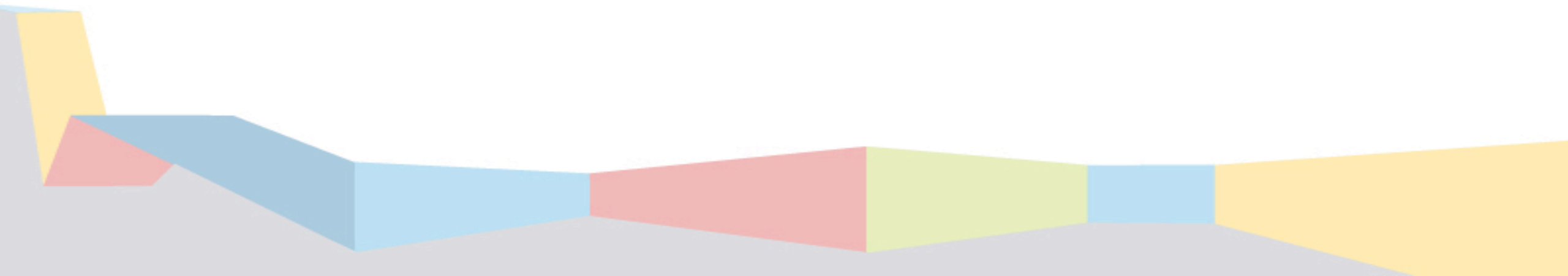
2013-2014 there were  
5 EXPULSIONS.

2014-2015 there have been  
**NO EXPULSIONS!!**

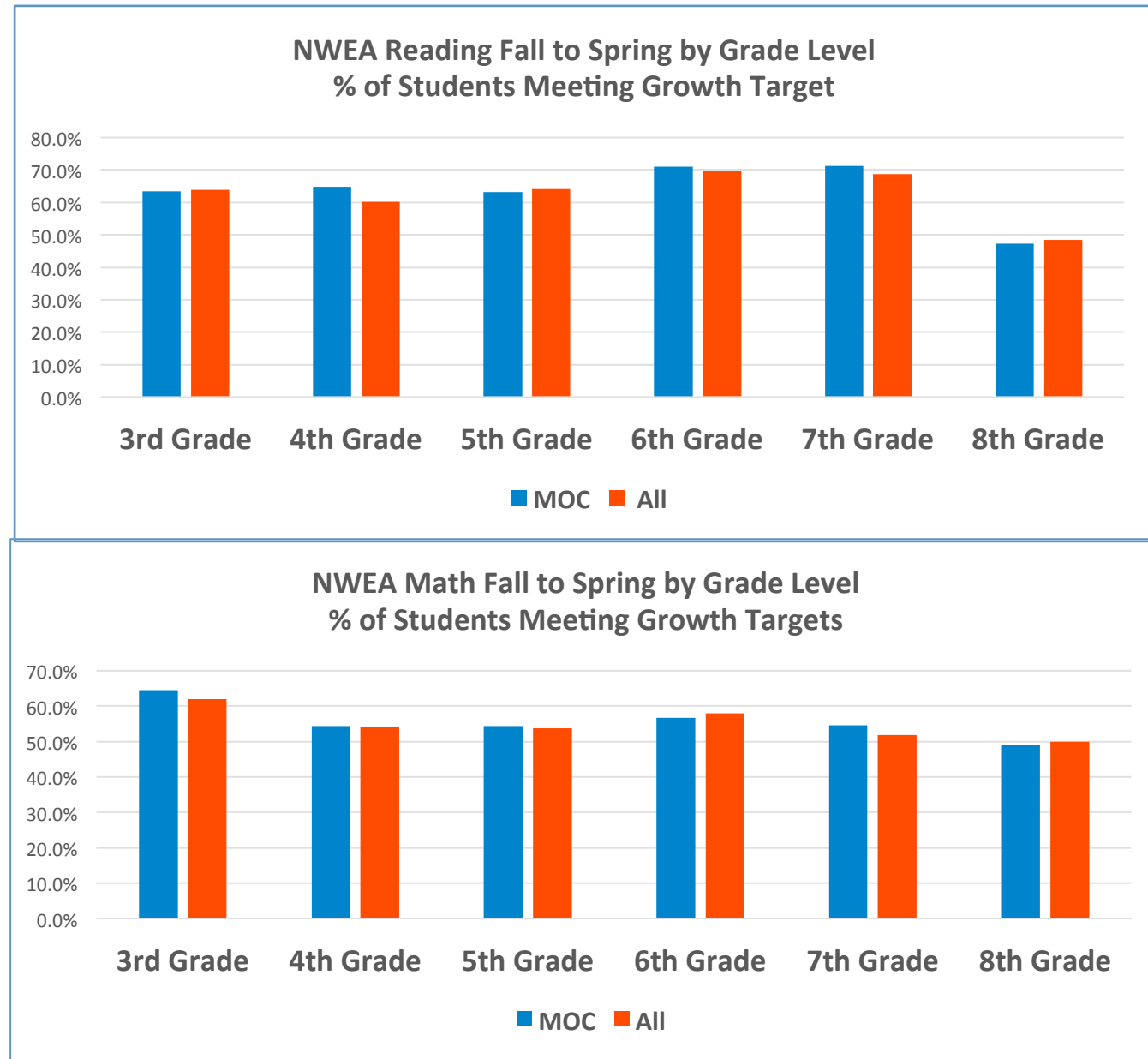




# MOC Data vs. District Data



*KCPS MOC performed with or outperformed for both Reading and Math at every grade level.*



MOC Average Daily Attendance (ADA) closely shadows the KCPS as a whole in grades Kindergarten through six. Over two years of analysis, the average difference in ADA between MOC and the KCPS in grades K to 6<sup>th</sup> is 0.2%.

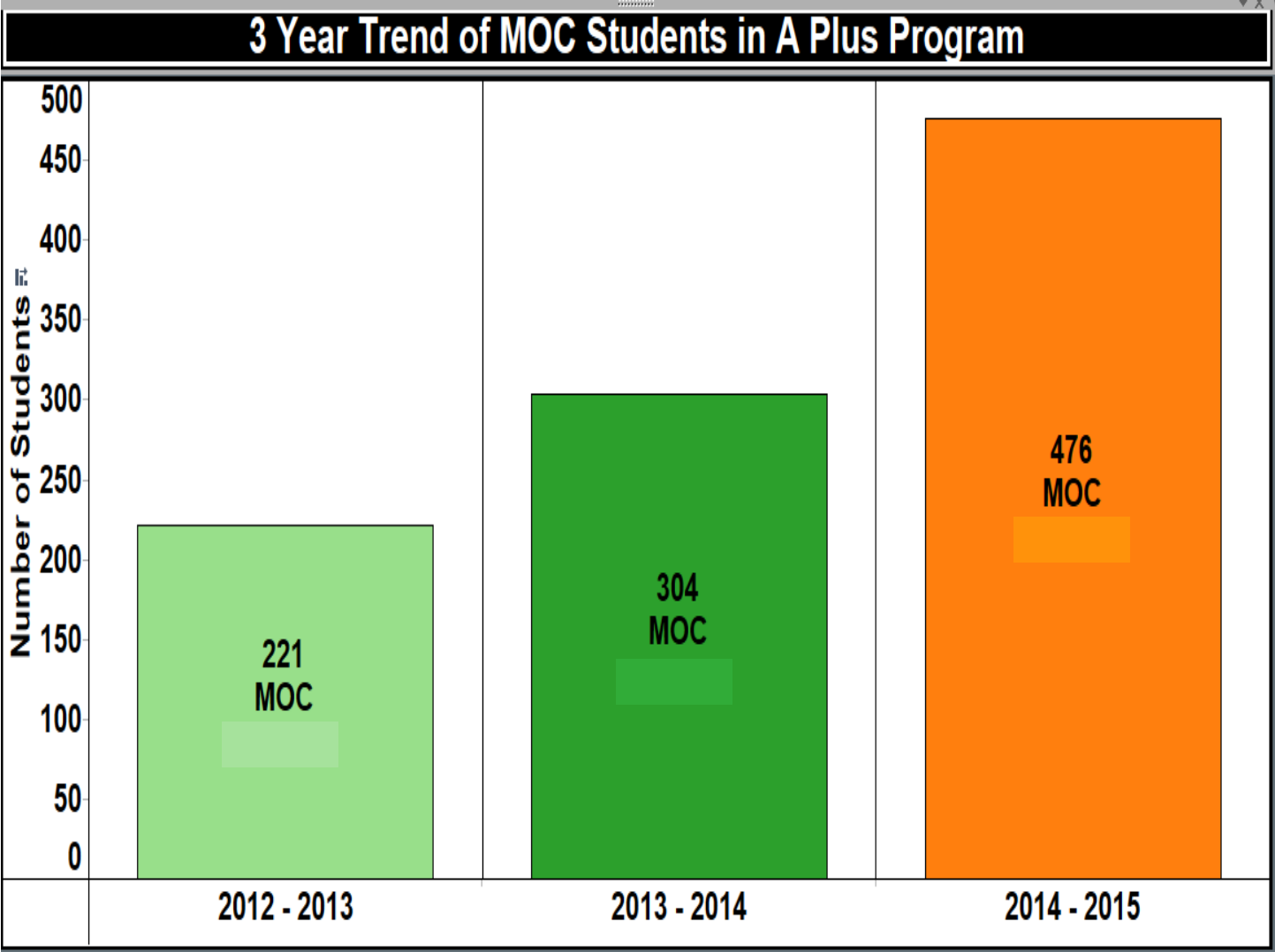
The largest difference between MOC ADA and the KCPS occurs in grades seven through nine, with MOC ADA ranging from 1.0% to 1.4% below the KCPS average.

Once MOC reach the tenth grade their attendance realigns with the overall KCPS ADA, with differences ranging from 0.2% to 1.0% over the last two years.

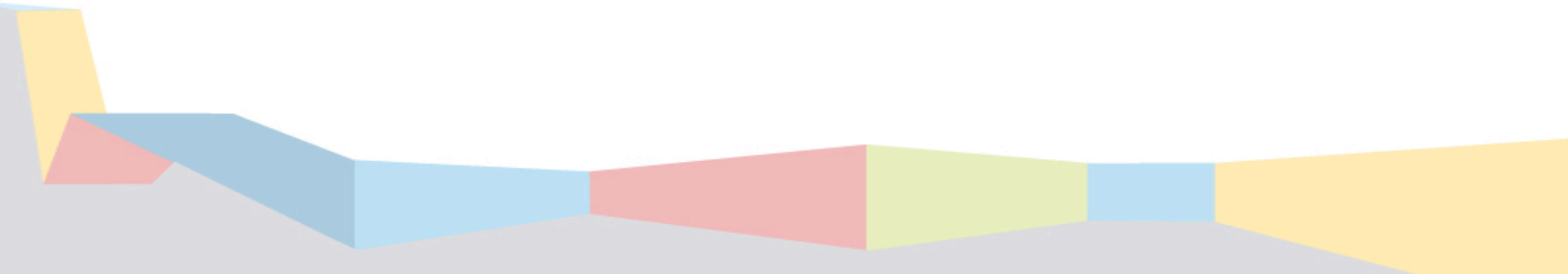


The KCPS has targeted inclusion in the A+ Program as an important resource to promote graduates' participation in higher education.

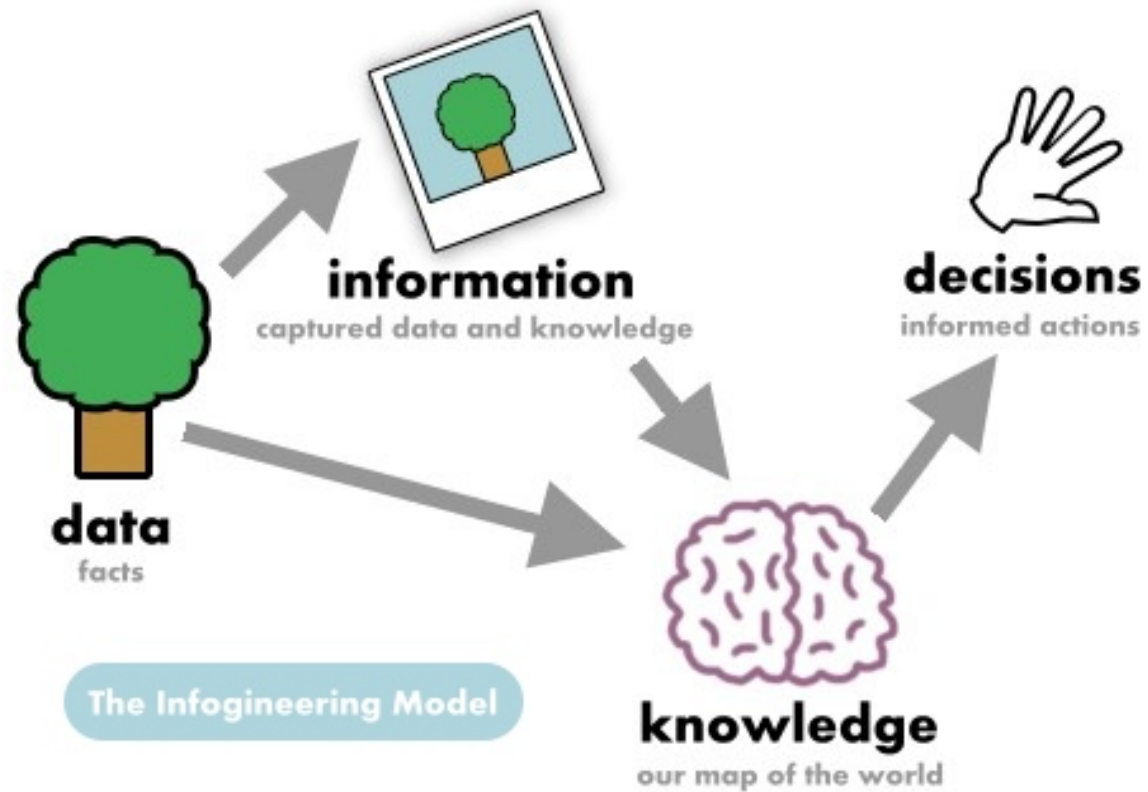
MOC participation has more than doubled since SY13.



# Professional Development Strategies

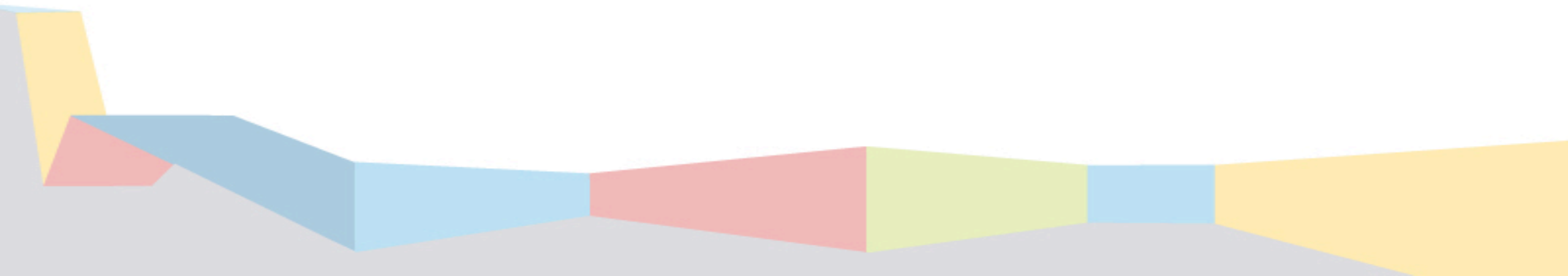


# Argumentative Literacy



# Curriculum and Professional Development Support for MOC

- UMKC Cohort for Culturally Responsive Pedagogy
- Cohort for Year 1 has eight teachers enrolled and 31 interested in Cohort 2.
- Book Study by the Curriculum, Instruction and Professional Development Staff in May to provide a Culturally Responsive curriculum.

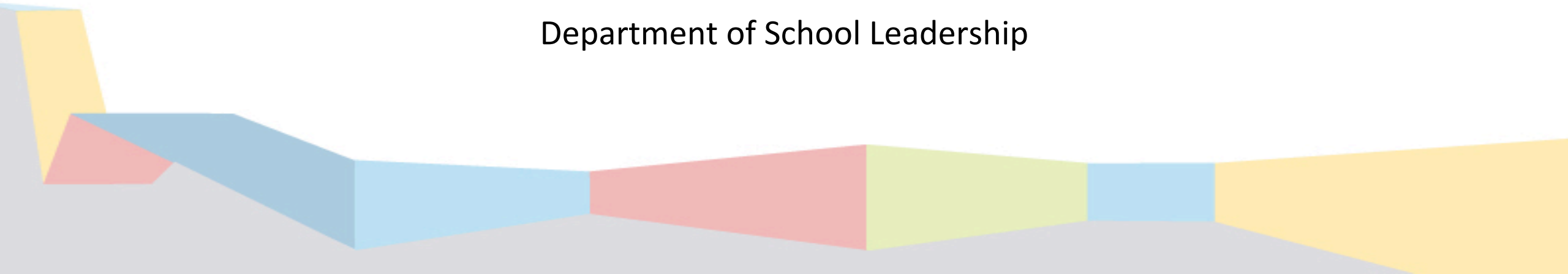


# Questions?



# Summer School Report

Department of School Leadership



# By the Numbers

*(Based on Data from Summer 2014)*

30

Buses Ran Daily

28,000

Bus miles traveled

17

Elementary Buildings Open

7,135

Students enrolled

100%

of SB319 Students  
maintained or showed  
growth

82,382

Breakfasts served

52

Summer School  
Meetings

1

LEA - KCPS

6,706

Students present  
at least one day

31

KCPS Principals monitored  
instruction at all sites

\$400,000.00

Incentives paid

166

Elementary Retention  
Students Enrolled

118,367

Lunches served

47

Sites/Programs

# THE KCPS DIFFERENCE – PROVEN RESULTS

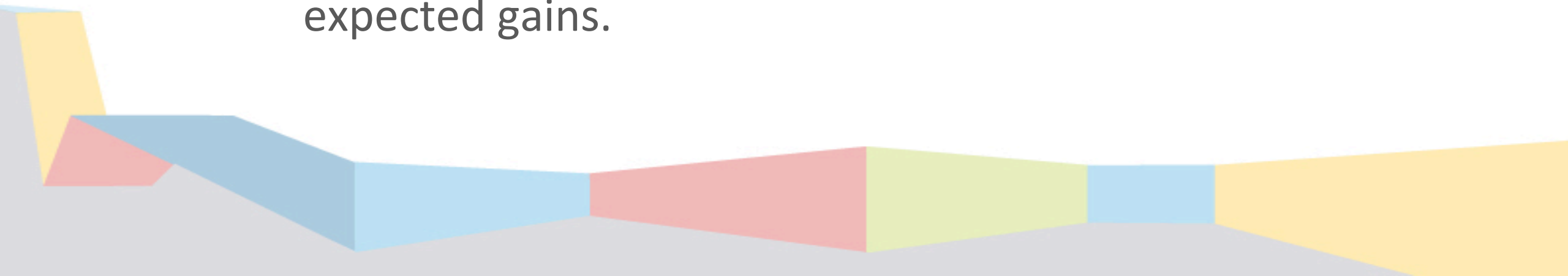
*(Based on Summer 2014 achievement data)*

## MATH

38 of the 44 (86%) grade levels assessed showed some growth - 32 (73%) of them exceeding the expected gains.

## READING

40 of the 44 (91%) grade levels assessed showed some growth - 39 (89%) of them exceeding the expected gains.



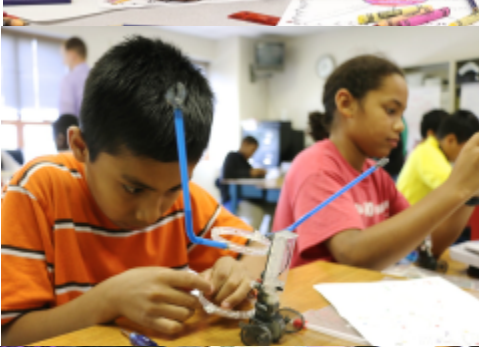


# Summer. experience

---

KCPS | 2015







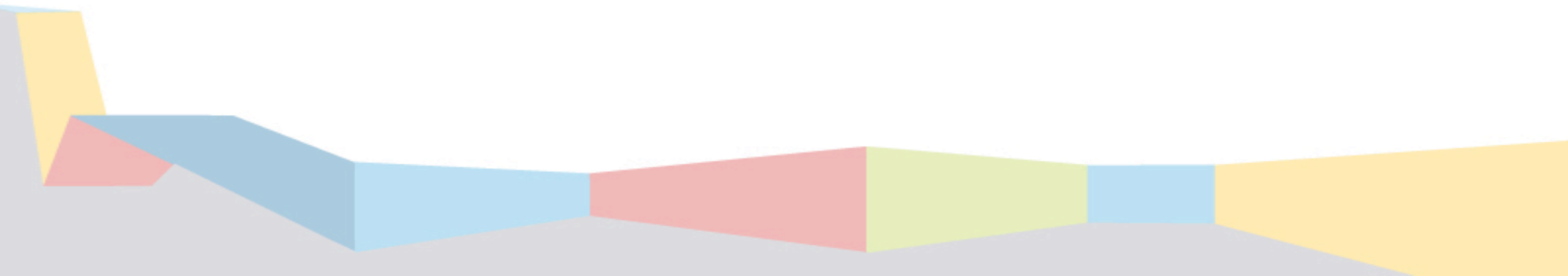


caring **MORE.** experience **MORE.**



# Summer School Press Conference

- <https://vimeo.com/125176340>



# Keeping Our Parents and Community Informed

## Site Directory

Summer School Site	Dates	Times	Grades	Management	Address
AC Prep Lower	June 1st - July 10th	7:00 - 8:00	Rising K-6	UNC	6410 Swope Parkway
ACCPA Upper	June 1st - July 10th	7:30 - 12:25	Rising 9-12	KCPS Enrichment/ Credit Recovery/ 7 Strategic	3500 E Meyer Blvd
Bancker Elementary	June 1st - July 10th	7:00 - 8:00	Rising K-6	UNC	7050 Asklew Ave
Border Star Montessori	June 1st - July 10th	7:00 - 8:00	Rising K-6	UNC	6321 Wornall Rd
Carver Dual Language	June 1st - July 10th	7:00 - 8:00	Rising K-6	UNC	4600 Elmwood Ave
Calvary Temple Baptist Church	June 8th - July 31st	7:30 - 8:00	Grades K-4	Upper Room	2040 Holmes St
Central Middle	June 1st - July 10th	7:30 - 12:25	Rising 7-8	KCPS Enrichment/ Credit Recovery/ 7 Strategic	3611 E. Linwood Blvd
Covenant Presbyterian Church	June 8th - July 31st	7:30 - 8:00	Grades 3-4	Upper Room	5931 Swope Pkwy
East High School	June 1st - July 10th	7:30 - 12:25	Rising 9-12	KCPS Enrichment/ Credit Recovery/ 7 Strategic	1924 Van Brant Blvd
Faxon Elementary	June 1st - July 10th	7:00 - 8:00	Rising K-6	UNC	1320 E. 32nd Terrace
Friendship Baptist Church	June 8th - July 31st	7:30 - 8:00	Grades K-6	Upper Room	3530 Chelsea Dr
Garcia Elementary	June 1st - July 10th	7:00 - 8:00	Rising K-6	UNC	1000 W 17th St
Garfield Elementary	June 1st - July 10th	7:00 - 8:00	Rising K-6	UNC	436 Prospect Ave
Gardner Elementary	June 1st - July 10th	7:00 - 8:00	Pre-K-6	UNC, KCPS-ELL, 58319	335 N Elmwood Ave
Grace Baptist Church	June 8th - July 31st	7:30 - 8:00	Grades 1-6	Upper Room	7208 Paseo Blvd
Hale Cook Elementary	June 1st - July 10th	7:00 - 8:00	Rising K-3	UNC	7302 Pennsylvania Ave
Hartman Elementary	June 1st - July 10th	7:00 - 8:00	Rising K-6	UNC	8111 Oak St
Holiday Montessori	June 1st - July 10th	7:00 - 8:00	Rising K-6	UNC	7227 Jackson Ave
Holy Cross	June 8th - July 31st	7:30 - 8:00	Rising K-8	Upper Room	121 N Quincy Ave
James Elementary	June 1st - July 10th	7:00 - 8:00	Rising K-6	UNC	5810 Scarritt Ave
King Elementary	June 1st - July 10th	7:00 - 8:00	Rising K-6	SK/UNC	4848 Woodland
J&D Wagner Unit	June 1st - July 10th	7:00 - 8:00	Grades K-12	Boys & Girls Club	2405 Elmwood Ave
Jameson Temple CME Church	June 8th - July 31st	7:30 - 8:00	Grades 1-8	Upper Room	3115 E Linwood Blvd
Macedonia Baptist Church	June 8th - July 31st	7:30 - 8:00	Grades K-5	Upper Room	1700 E Linwood Blvd
Mary Kelly Center	June 8th - July 31st	7:30 - 8:00	Grades 1-5	Upper Room	2803 E 51st St
Melcher Elementary	June 1st - July 10th	7:00 - 8:00	Rising K-6	UNC	3958 Chelsea Dr
Metropolitan AME Zion	June 8th - July 31st	7:30 - 8:00	Grades K-5	Upper Room	2826 Prospect Ave
Metropolitan Missionary Baptist Church	June 8th - July 31st	7:30 - 8:00	Grades K-8	Upper Room	2310 E Linwood Blvd
Mt. Pleasant	June 15th - July 31st	7:30 - 8:00	Rising K-9	Frederick School	2200 Olive St
Northeast Middle	June 1st - July 10th	7:30 - 12:25	Rising 7-8	KCPS Enrichment/ Credit Recovery/ 7 Strategic	4804 Independence Ave
Northeast Middle	June 1st - July 10th	7:30 - 12:25	Rising 7-8	KCPS Enrichment/ Credit Recovery	4804 Independence Ave
Page Elementary	June 1st - July 10th	7:00 - 8:00	Rising K-6	KCPS/UNC	3301 E. 75th St
Page Elementary	June 1st - July 10th	7:00 - 8:00	Grades 1-2	YMCA	3301 E. 75th St
Parkview Missionary Baptist Church	June 8th - July 31st	7:30 - 8:00	Grades 1-8	Upper Room	3619 E 35th St
Phillips Elementary	June 1st - July 10th	7:00 - 8:00	Rising K-6	UNC	1619 E. 24th Terr
Paseo Academy	June 4th - July 10th	7:30 - 2:45	Grades 7-12	Alvin Ailey	4747 Flora Ave
Paseo Academy	June 4th - July 10th	8:40 - 12:10	Rising 7	Summer Bridge	4747 Flora Ave
Packer Elementary	June 1st - July 10th	7:00 - 8:00	Rising K-6	UNC	8915 E 38th Terr
Police Athletic League	June 8th - July 31st	7:30 - 8:00	Grades 1-8	Upper Room	1801 White Ave
St. Mark's Union Church	June 8th - July 31st	7:30 - 8:00	Grades K-8	Upper Room	1101 Euclid Ave
St. Stephen's Baptist Church	June 8th - July 31st	7:30 - 8:00	Grades 1-8	Upper Room	1414 Truman Rd
Swope Parkway Church of Christ	June 8th - July 31st	7:30 - 8:00	Grades 5-6	Upper Room	5630 Swope Pkwy
Thornberry Unit	June 1st - July 31st	7:00 - 8:00	Grades K-12	Boys & Girls Club	3831 E 43rd St
Talwood Elementary	June 1st - July 10th	7:00 - 8:00	Rising K-6	UNC	6201 E 17th St
Upper Room	June 8th - July 31st	7:30 - 8:00	Grades 1-2	Upper Room	5930 Swope Pkwy
W.E.B. DuBois Learning Center	June 1st - July 10th	7:30 - 3:45	Rising 7-8	W.E.B. DuBois	4510 Elmwood Blvd
Wheatley	June 1st - July 10th	7:00 - 8:00	Rising K-6	KCPS - SPED	2415 Agnes Ave
Wheatley	June 1st - July 10th	7:00 - 8:00	Rising K-6	UNC	1012 Bales Ave



## Boys & Girls Clubs Thornberry and Wagner

Boys & Girls Clubs of Greater Kansas City Atomic Blast Summer Enrichment Program offers exciting, educational enrichment programs focused on keeping young minds engaged over the summer. During Atomic Blast, Club kids learn math and science skills through fun activities and nurture a love of learning through reading comprehension and writing exercises.



**DATES**  
9-week Program  
June 1 – July 31, 2015

**HOURS**  
Monday-Friday  
7:00 a.m. - 6:00 p.m.

**PROGRAM DIRECTOR**  
Candy Brooks  
Director of Education

**PHONE**  
(816) 361-3600 ext. 242  
Fax: (816) 361-3675

**ADDRESS**  
4001 Blue Pkwy, suite 102  
Kansas City, MO 64130

**LOCATIONS**  
**J&D Wagner Unit**  
2405 Elmwood Ave.  
Kansas City, MO 64127  
(816) 241-5252

**Thornberry Unit**  
3831 E. 43rd St.  
Kansas City, MO 64130  
(816) 861-6300

**WEBSITE**  
www.help4kids.org



**ELIGIBILITY**  
Children and youth ages 5 – 18

**COURSE OFFERINGS**  
Each day, children and youth participate in educational activities facilitated by certified teachers (grades K-8) that involve a high level of youth engagement and motivation. The program includes field trips, computer lab, swimming, friendship, fun, exploration and more.

**INCENTIVE**  
For good attendance (no more than two absences) students will earn \$100.

**PARENT INVOLVEMENT**  
Required introductory parent meeting.

**MEALS**  
Breakfast, lunch and snack provided

**DRESS CODE**  
Members should be adequately dressed for indoor and outdoor activities.

- Children must have tennis shoes, without black soles, shorts or sweat pants for gym activities.
- Children must wear shoes that will stay on their feet, thongs are not acceptable.
- When members are swimming, appropriate swimming attire is required to utilize the swimming pool. (SHORTS AND A SHIRT FOR ALL CLUB MEMBERS)



# www.kcpublicschools.org/Summer

KANSAS CITY  
PUBLIC SCHOOLS



About

Our Schools

Programs

Departments

Repurposing

School Board

Resources

KANSAS CITY PUBLIC SCHOOLS ▶ DEPARTMENTS ▶ SCHOOL LEADERSHIP (ELEMENTARY AND SECONDARY EDUCATION) ▶ SUMMER SCHOOL

ENROLL  
TODAY!



Summer  
experience  
2015 Kansas City Public Schools

When schools are out for the summer, it's important for families to select fun, safe, healthy and educational activities for their children. We offer extensive summer learning opportunities for students throughout Kansas City Public Schools. Here you'll find resources to help keep your child engaged, active and learning all summer long.

**DOWNLOAD THE 2015 KCPS SUMMER EXPERIENCE HANDBOOK**

### Why Summer School?

1. Improve reading and math skills
2. Get a jump start on classes
3. Ease the transition from one grade to the next

### How to register?

*Applications*

**Students In or Entering Elementary School**

**Reside In KCPS Boundaries**

- English-Language Version
- Spanish-Language Version

**School Leadership  
(Elementary and Secondary  
Education)**

Overview

**Summer School**

2015 Graduation Schedule

**Departments**

Superintendent

Chief Academic and Accountability  
Office

Athletics

Business and Finance

Child Nutrition

Curriculum and Instruction,  
Professional Development

School Leadership (Elementary and  
Secondary Education)

Human Resources

Information Technology

Legal Services

Operations

Public Relations

Student and Community Services

Transportation

# Elementary Sites

*20 Buildings*

June 1, 2015 - July 10, 2015

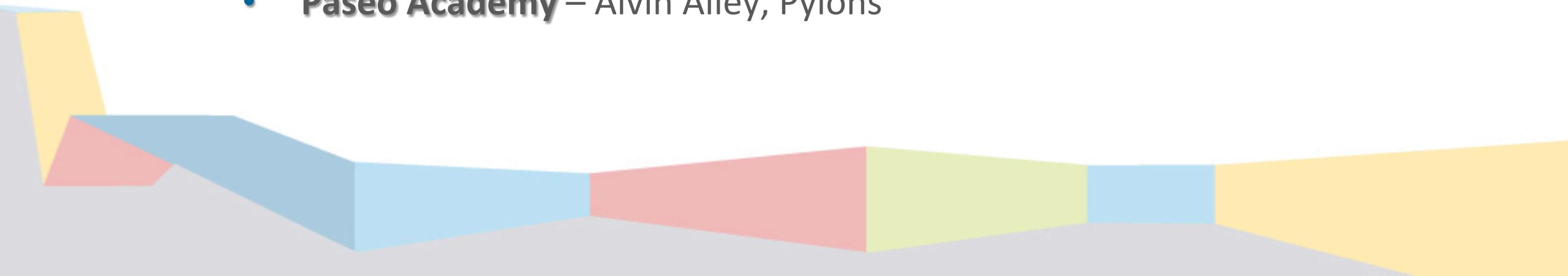
- ACCP - LOWER
- BANNEKER
- BORDER STAR
- CARVER
- FAXON
- GARCIA
- GARFIELD
- GLADSTONE
- HALE COOK
- HARTMAN
- HOLLIDAY
- JAMES
- KING
- MELCHER
- PAIGE
- PHILLIPS
- PITCHER
- TRAILWOODS
- WHEATLEY
- WHITTIER

# Secondary Sites

*5 Buildings*

June 1, 2015 - July 10, 2015

- **Central Middle** – Rising 7<sup>th</sup> – 8<sup>th</sup>/Credit Recovery
- **Northeast Middle** – Rising 7<sup>th</sup> – 8<sup>th</sup>/Credit Recovery, New Americans
- **ACCPA Upper** – Rising 9<sup>th</sup> – 12<sup>th</sup>/Credit Recovery
- **East High** – Rising 9<sup>th</sup> – 12<sup>th</sup>/Credit Recovery
- **Paseo Academy** – Alvin Ailey, Pylons

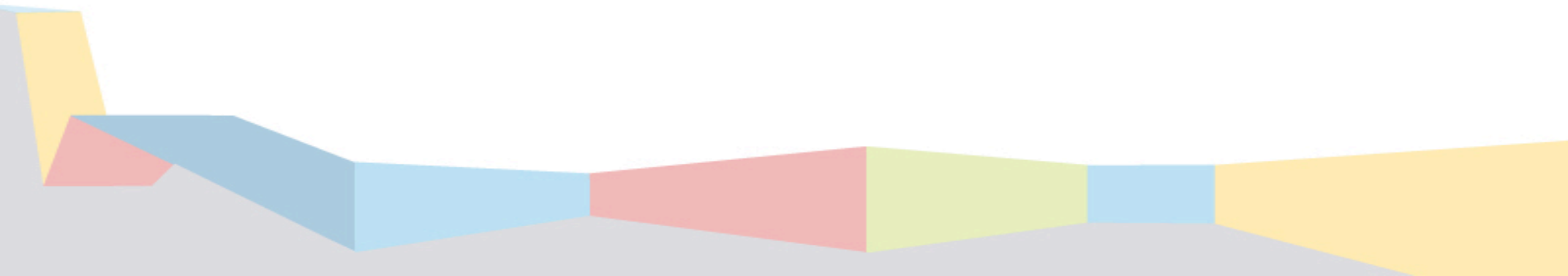


# KCPS Partners



# Monitoring and Accountability

- State Reporting
- Human Resources
- Attendance
- Instruction



# Summer School Partner Roster

## What is the Summer School Partner Roster?

Summer School Partner Roster is a database of persons who have been selected to instruct students in Summer School. We are using it to communicate required state reporting information from the partners to Kansas City Public Schools.

## Link

<http://169.142.1.184/SummerPartner>

## Login

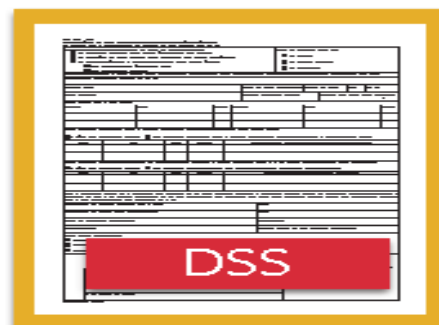
Do NOT change your password in training. You will designate 1 person to decide the password and distribute it to others in your organization.

<i>Partner</i>	<i>Login Name</i>
<i>Boys &amp; Girls Club</i>	<i>boysgirls</i>
<i>Upper Room</i>	<i>upperroom</i>
<i>LINC</i>	<i>linc</i>
<i>Freedom</i>	<i>freedom</i>
<i>7 Strategic</i>	<i>7strategic</i>
<i>W.E.B. Dubois</i>	<i>webdubois</i>

## Fields



AD



DSS



FBI



Summer School Partner  
Information Sheet

Partner/Program	Contact Person	Contact Phone	Contact Email

Program Length (Ex: 6 weeks)	Program Start Date	Program End Date	Operational Start Time	Operational End Time	Instructional Start Time	Instructional End Time

SY14 Attendance Rate	SY 15 Projected Total Enrollment	Estimated # of Non-KCPS Students	Total Budget Amount



Provide a daily schedule of your program.	List enrichment activities and days/dates.

### Attendance Hours

<i>Partner</i>	<i>Attendance Times</i>
<i>LINC</i>	<i>8:35am – 3:45pm</i>
<i>Boys &amp; Girls Club</i>	<i>8:00am – 3:00pm</i>
<i>Upper Room</i>	<i>8:30am – 3:30pm</i>
<i>Freedom Schools</i>	<i>8:00am – 3:00pm</i>
<i>7<sup>th</sup> Strategic</i>	<i>7:30am – 12:30pm</i>
<i>W.E.B. DuBois</i>	<i>8:30am – 12:45pm</i>

### Summer School Attendance Procedures

Attendance sheets will be provided to all sites at the PD training, before the start of the site summer program.

<u>Partner</u>	<u>Class Scheduling Training &amp; Workshop</u>	<u>1<sup>st</sup> Day of Summer School</u>	<u>Seat Count</u>	<u>Target</u>
LINC	Wed - May 27 <sup>th</sup> 10:00am-12:00pm	June 1 <sup>st</sup>	25	Site Managers
WEB DuBois	Wed - May 27 <sup>th</sup> 10:00am-12:00pm	June 1 <sup>st</sup>	2	Site Manager
Boys & Girls Clubs	Wed - May 27 <sup>th</sup> 10:00am-12:00pm	June 1 <sup>st</sup>	4	Site Managers
Upper Room	Wed - June 3 <sup>rd</sup> 10:00am-12:00pm	June 8 <sup>th</sup>	25	Site Managers
Freedom Schools	Wed - June 3 <sup>rd</sup> 10:00am-12:00pm	June 15 <sup>th</sup>	2	Site Managers

Every Friday afternoon, or more often if necessary, the Site Coordinator must print the attendance rosters for the upcoming week and distribute them to the teachers.

**Teacher-**All teachers will record accurate attendance daily on the attendance rosters. LINC and 7<sup>th</sup> Strategic will use the SIS Tyler system to record attendance all other sites will utilize attendance rosters created by the KCPS. Teachers will mark students who are absent with an A. Teachers will mark students who arrive late to class as absent with the time of arrival. Students who leave early will be marked absent with the time of departure. The State of Missouri requires us to track late arriving and early departing students as well as absent students.

**Site Coordinator** (*responsible for inputting attendance*)-The Site Coordinator will pick up attendance daily approximately 90 minutes before the end of the instructional day. The site coordinator or secretary will record the late arrivals and early departures every day. *All attendance must be in the system the last 60 minutes of instructional time. Example: If your instructional time is 8:30am-3:30pm then attendance needs to be completed on the system by 2:30pm.*

<i>Partner</i>	<i>Attendance Times</i>	<i>Completed By</i>
<i>LINC</i>	<i>8:35am – 3:45pm</i>	<i>2:45 pm</i>
<i>Boys &amp; Girls Club</i>	<i>8:00am – 3:00pm</i>	<i>2:00 pm</i>
<i>Upper Room</i>	<i>8:30am – 3:30pm</i>	<i>2:30 pm</i>
<i>Freedom Schools</i>	<i>8:00am – 3:00pm</i>	<i>2:00 pm</i>
<i>7<sup>th</sup> Strategic</i>	<i>7:30am – 12:30pm</i>	<i>11:30 am</i>
<i>W.E.B. DuBois</i>	<i>8:30am – 12:45pm</i>	<i>11:45 am</i>





# 2015 Summer School Walk Through Checklist

School/Site \_\_\_\_\_ Date \_\_\_\_\_ Observer \_\_\_\_\_

Certified Teacher:	Room #:		
# of Students Present:	Time: Entry		Exit
Characteristics	Strong	Average	Low
There was evidence that the district curriculum was implemented.			
Learning objectives are shared with the student (Verbally and Visually).			
Instructional activity is aligned with the learning objective.			
Lesson and tasks emphasized higher-order thinking and the lesson resulted in student learning.			
Teacher actively facilitated the lesson and assisted the students.			
The teacher conveyed high expectations for learning.			
The teacher effectively drew disengaged students into instruction.			
The teacher appeared confident and knowledgeable about the content.			
The teacher made the lesson relevant to the students' life experiences.			
The teacher interacted positively with other students.			
There was evidence that student feedback was used to adjust the lesson.			
The teacher provided specific and timely feedback to students.			

## Teacher Activity:

☐ Facilitates Discussion      ☐ Monitors seatwork      ☐ Lecture  
☐ Promotes hands-on learning      ☐ Utilizes grouping      ☐ Utilizes technology

Students:	# Actively Engaged:	# Passively Engaged:	# Not Engaged:
-----------	---------------------	----------------------	----------------

## Student Activity:

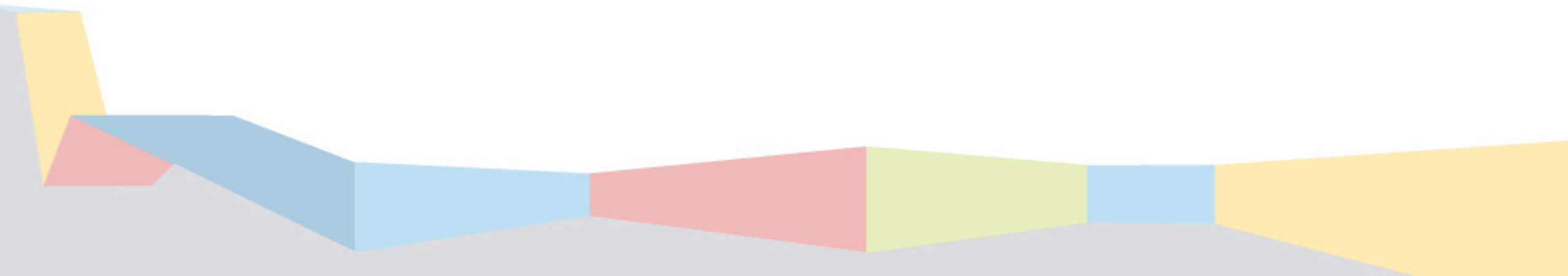
☐ Hands-on-learning      ☐ Oral presentation      ☐ Writing  
☐ Worksheet      ☐ Class discussion      ☐ Using content vocabulary  
☐ Testing      ☐ Technology      ☐ Silent Reading  
☐ Creating a product      ☐ Peer to Peer discussion      ☐ Self-assessment

Observer's Signature: \_\_\_\_\_ Date: \_\_\_\_\_

# Questions?

# Feedback

Questions from feedback cards –



# RSIT Breakout Discussion



# Feedback/Requests

# Monthly Meeting Date

