

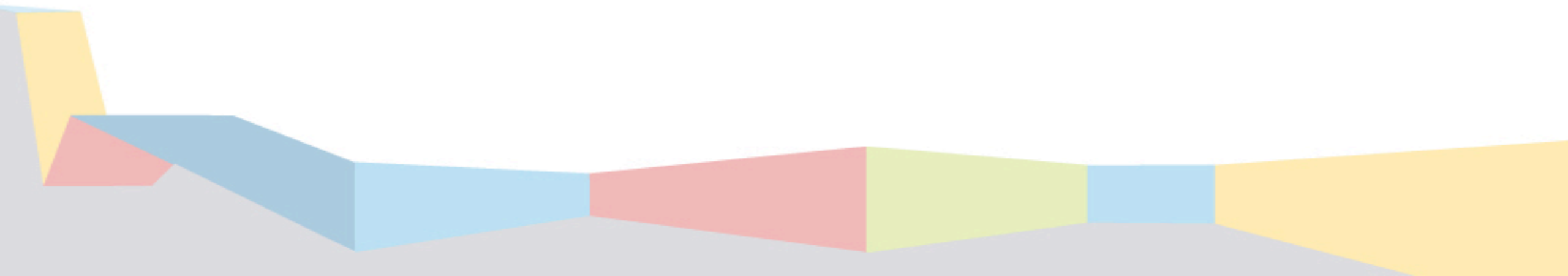
# **Kansas City Public Schools and Department of Elementary and Secondary Education Regional School Improvement Team Meeting**

May 28, 2015

**KANSAS CITY**  
PUBLIC SCHOOLS

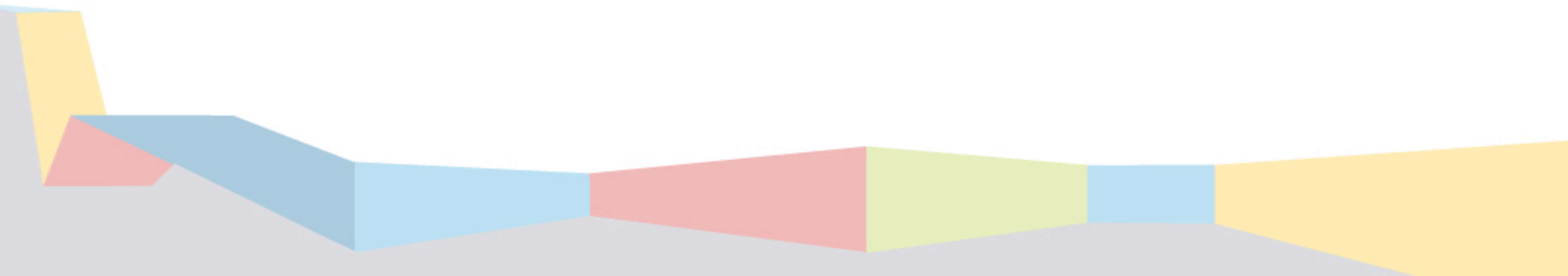


# 2014-2015 SMART Goals



# **MSIP 5**

## **2014-2015 Targets**



# KCPS 2014-2015 Targets

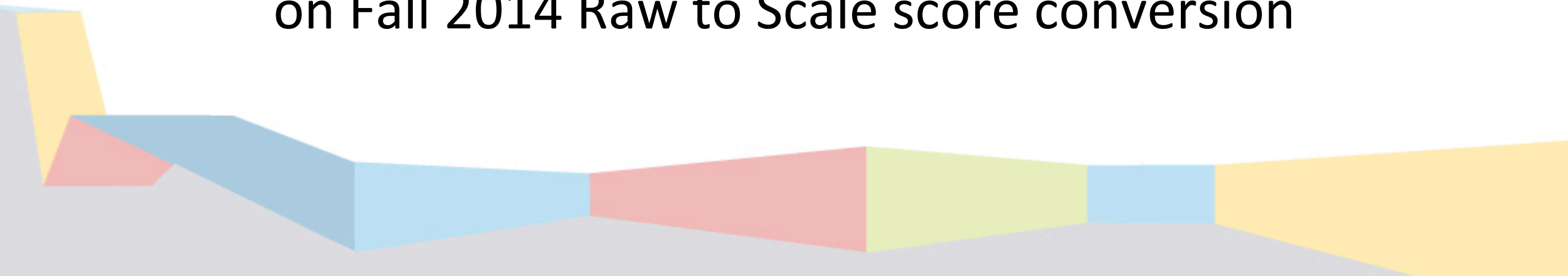
		Pts Poss.	SY14	SY15 - I	SY15 - II
1. Academic Achievement	ELA	16	12	12	12
	MA	16	12	12	12
	SCI	16	6	6	12
	SS	8	6	6	6
2. SubGroup Achievement	ELA	4	0	0	0
	MA	4	1	1	1
	SCI	4	2	2	2
	SS	2	1.5	1.5	1.5
3. CCR	ACT	10	8	8	8
	ADV C.	10	8	8	8
	Placement	10	9.5	10	10
4. Attendance	90/90	10	4	7.5	7.5
5. Grad Rate		30	22.5	22.5	22.5
APR Total		140	92.5	96.5	102.5

# **Preliminary EOC Scores**

## **SY 2013 - SY 2015 Raw Scores**

### **Summer, Fall and Spring EOC Testing**

\*Algebra 1 and English 10 Spring 2015 based on Fall 2014 Raw to Scale score conversion



# Government

<b>Government</b>	<b>2013 MPI</b>	<b>2014 MPI</b>	<b>2015 MPI</b>	<b>2013 Stdts</b>	<b>2014 Stdts</b>	<b>2015 Stdts</b>
<i>ACE Collegium At S.E. 7-12</i>	240.3	267.7	301.7	77	65	60
<i>Central Academy of Excellence</i>	228.6	211.2	240.7	84	107	113
<i>East High School</i>	297.9	303.8	313.5	140	132	155
<i>Lincoln College Prep.</i>	378.7	407.4	402.2	178	136	139
<i>Northeast High</i>	217.6	194.9	231.7	131	98	167
<i>Paseo Acad. Of Performing Arts</i>	325.0	326.6	340.0	76	79	85
<i>Southwest Early College Campus</i>	210.9	223.2	280.3	129	82	117
<b>Grand Total</b>	<b>278.8</b>	<b>284.3</b>	<b>299.3</b>	<b>815</b>	<b>699</b>	<b>836</b>

# Biology

<b>Biology</b>	<b>2013 MPI</b>	<b>2014 MPI</b>	<b>2015 MPI</b>	<b>2013 Stdts</b>	<b>2014 Stdts</b>	<b>2015 Stdts</b>
<i>ACE Collegium At S.E. 7-12</i>	281.6	239.3	282.2	49	84	90
<i>Central Academy of Excellence</i>	279.0	213.5	243.6	81	133	149
<i>East High School</i>	269.7	268.7	298.0	145	150	204
<i>Lincoln College Prep.</i>	399.4	391.5	406.7	162	164	164
<i>Northeast High</i>	244.7	258.9	262.6	123	146	174
<i>Paseo Acad. Of Performing Arts</i>	355.7	322.7	341.8	70	88	79
<i>Southwest Early College Campus</i>	239.6	241.5	267.8	91	82	90
<b>Grand Total</b>	<b>301.0</b>	<b>282.2</b>	<b>301.1</b>	<b>721</b>	<b>847</b>	<b>950</b>

# Algebra 1

<b>Algebra 1*</b>	<b>2013 MPI</b>	<b>2014 MPI</b>	<b>2015 MPI</b>	<b>2013 Stdts</b>	<b>2014 Stdts</b>	<b>2015 Stdts</b>
<i>ACE Collegium At S.E. 7-12</i>	272.9	292.0	260.3	96	50	78
<i>Central Academy of Excellence</i>	228.4	234.5	274.7	148	119	95
<i>East High School</i>	310.1	303.2	349.1	257	155	216
<i>Foreign Language Academy</i>	407.4	404.2	423.8	27	24	21
<i>Lincoln College Prep.</i>	414.9	430.3	411.9	181	142	101
<i>Northeast High</i>	248.2	258.0	276.4	112	119	106
<i>Paseo Acad. Of Performing Arts</i>	252.8	257.3	312.2	108	96	90
<i>Southwest Early College Campus</i>	235.8	253.7	237.1	120	95	62
<b>Grand Total</b>	<b>294.8</b>	<b>299.8</b>	<b>317.8</b>	<b>1049</b>	<b>800</b>	<b>769</b>



# English 2

<b>English 2*</b>	<b>2013 MPI</b>	<b>2014 MPI</b>	<b>2015 MPI</b>	<b>2013 Stdts</b>	<b>2014 Stdts</b>	<b>2015 Stdts</b>
<i>ACE Collegium At S.E. 7-12</i>	322.1	343.4	341.3	86	76	63
<i>Central Academy of Excellence</i>	273.6	288.3	297.8	110	128	137
<i>East High School</i>	312.6	343.6	339.2	143	133	148
<i>Lincoln College Prep.</i>	420.3	433.6	418.5	123	152	151
<i>Northeast High</i>	300.0	313.7	310.7	132	146	168
<i>Paseo Acad. Of Performing Arts</i>	336.1	370.2	328.6	97	94	91
<i>Southwest Early College Campus</i>	297.2	304.7	328.4	107	106	88
<b>Grand Total</b>	<b>323.6</b>	<b>344.3</b>	<b>338.9</b>	<b>798</b>	<b>835</b>	<b>846</b>

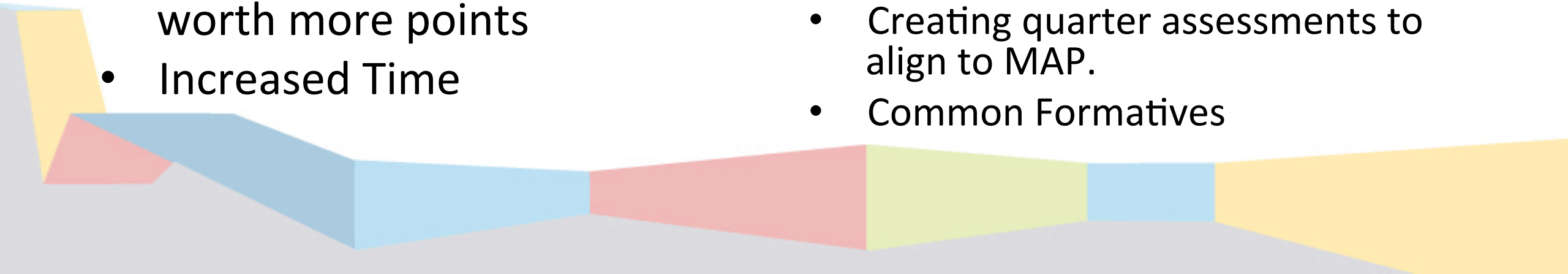
# Response to EOC Data:

## Shifts:

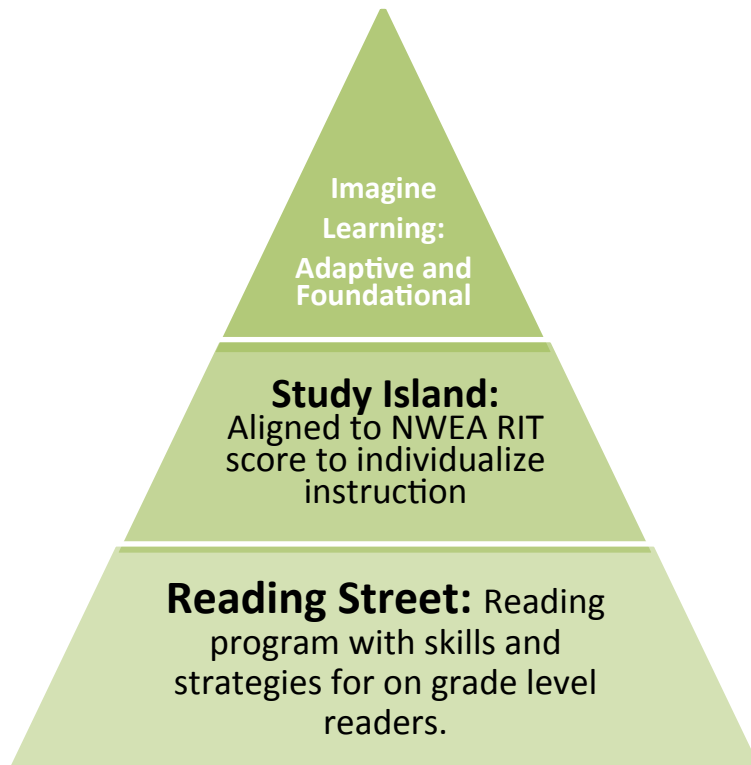
- Change of Standards
- Lexile Increase
- Algebra and Functions domains were the focus  
Algebra (Statistics and N&O were removed)
- Performance Event Item was worth more points
- Increased Time

## Solutions:

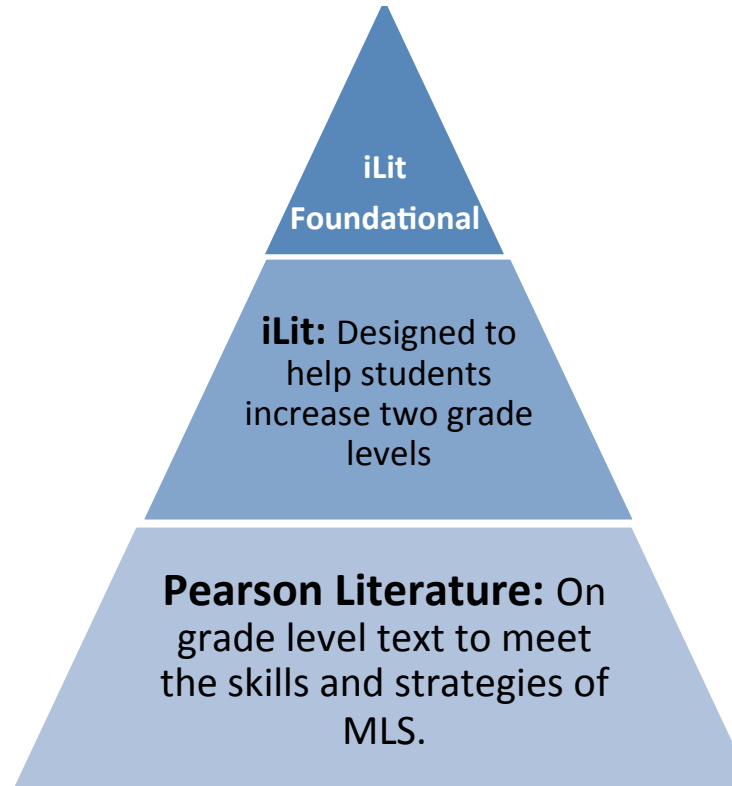
- Increase writing and vocabulary in the curriculum
- On-site and one-on-one professional development
- Professional development on interpreting and understanding the MLS
- Communicating reasoning
- Creating quarter assessments to align to MAP.
- Common Formatives



## Elementary



## Middle School



## Secondary



**Screener: NWEA (K-8) SRI (9-12)**

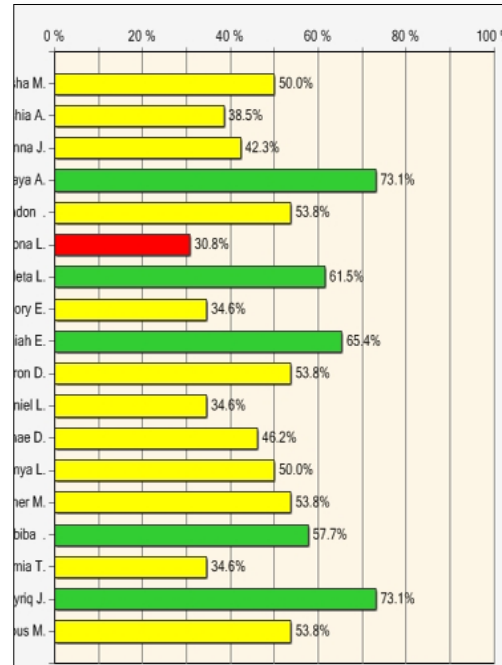
**Progress Monitoring Tool: STAR/NWEA**

# ELA & Math Plan Formatives and Quarterly SY15-16

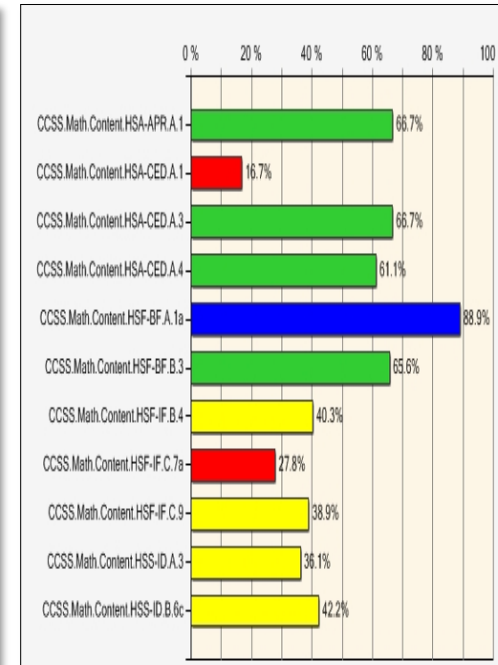
## Common Formative and Quarterly Assessments in Achievement Series

- All required common formative and quarterly assessments will be administered using Achievement Series for grades 7-12 Math and as well as unit assessments for Math Grades 1-6.
- Reports on individual student's percentage score, how a class performed on each standard tested, and item analysis will help teachers identify areas of concern by class and provide targeted support, interventions and customized lessons to students.
- In addition to the three reports generated, the teacher always can refer back to each student's responses per item for an individualized study plan.

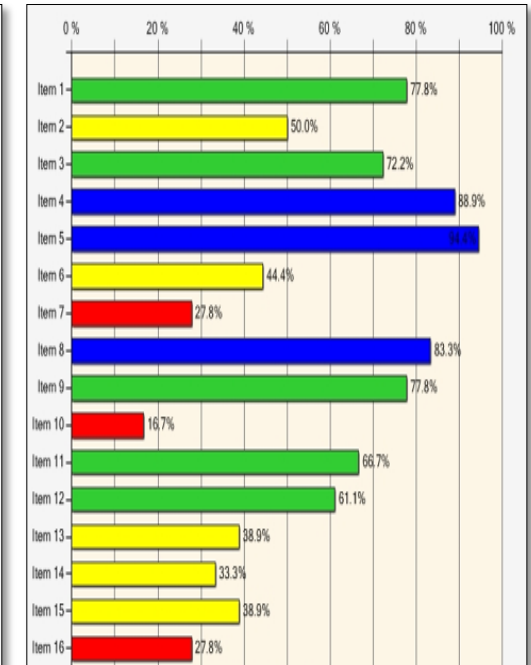
Individual Student Scores (%)



MLS Standards Report



Item Analysis

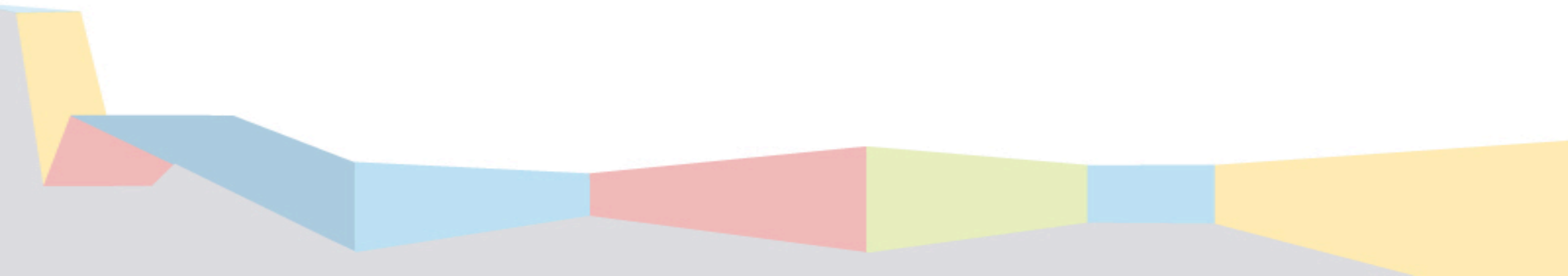


# Questions?

# **NWEA**

## **Fall to Spring Growth**

Reading, Mathematics and Science



# Reading K – 8<sup>th</sup> Grade

## READING

Grade	Fall Average RIT	Spring Average Rit	Growth	% Met Target
K	138.3	152.0	13.7	43.7%
1	155.0	168.3	13.3	36.0%
2	169.3	180.2	10.9	33.8%
3	176.6	187.9	11.3	54.4%
4	187.2	196.6	9.5	58.0%
5	193.3	201.8	8.5	63.4%
6	198.3	205.3	7.0	64.1%
7	199.6	207.2	7.6	62.5%
8	207.3	209.4	2.1	46.6%
Grand Total	175.9	186.0	10.1	49.6%

# Mathematics K-8<sup>th</sup> Grade

## MATHEMATICS

Grade	Fall Average RIT	Spring Average RIT	Growth	% Met Target
K	134.4	152.1	17.7	54.4%
1	155.0	172.0	17.1	52.4%
2	170.9	186.4	15.4	55.5%
3	180.7	195.4	14.7	68.6%
4	192.0	203.1	11.1	64.2%
5	200.4	211.0	10.6	66.7%
6	205.5	213.6	8.1	60.2%
7	210.8	216.5	5.8	58.6%
8	210.8	216.0	5.2	59.0%
Grand Total	178.6	191.5	12.9	59.6%



# Science - Grades 4, 5, 7, & 8

## SCIENCE

Grade	Fall Average RIT	Spring Average RIT	Growth	% Met Target
4	186.0	193.0	7.0	62.3%
5	190.6	198.8	8.1	72.6%
7	198.2	202.1	3.9	56.5%
8	200.9	205.8	4.8	61.8%
Grand Total	193.9	199.9	6.0	63.4%

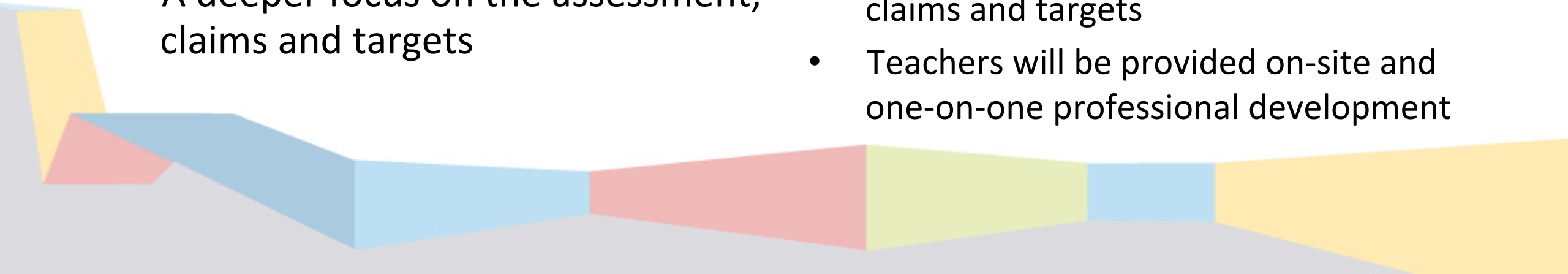
# Response to NWEA

## English Language Arts

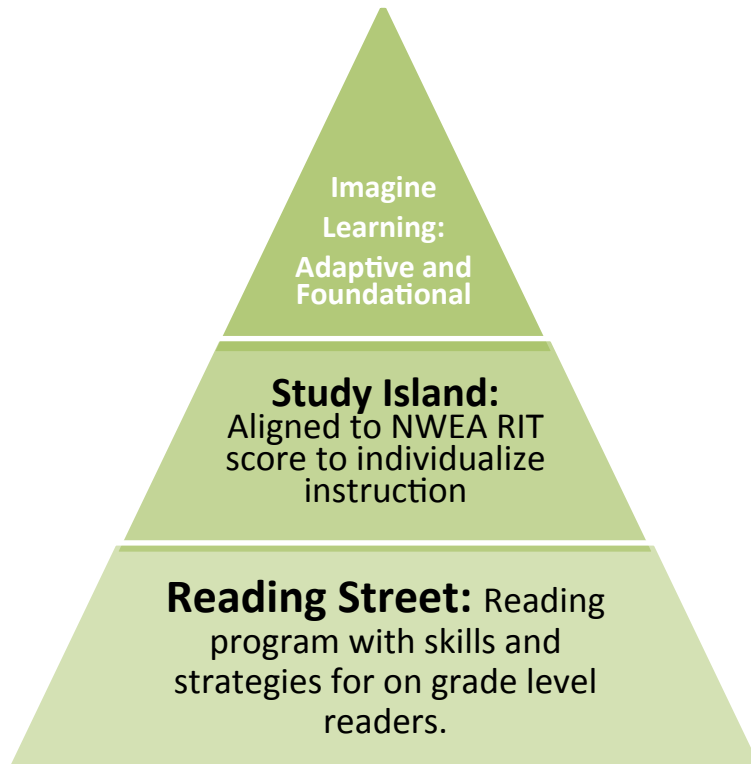
- The literacy plan will address the shifts in content area reading
- Rtl interventions will increase reading levels
- Literacy Leaders will provide professional development
- A deeper focus on the assessment, claims and targets

## Math

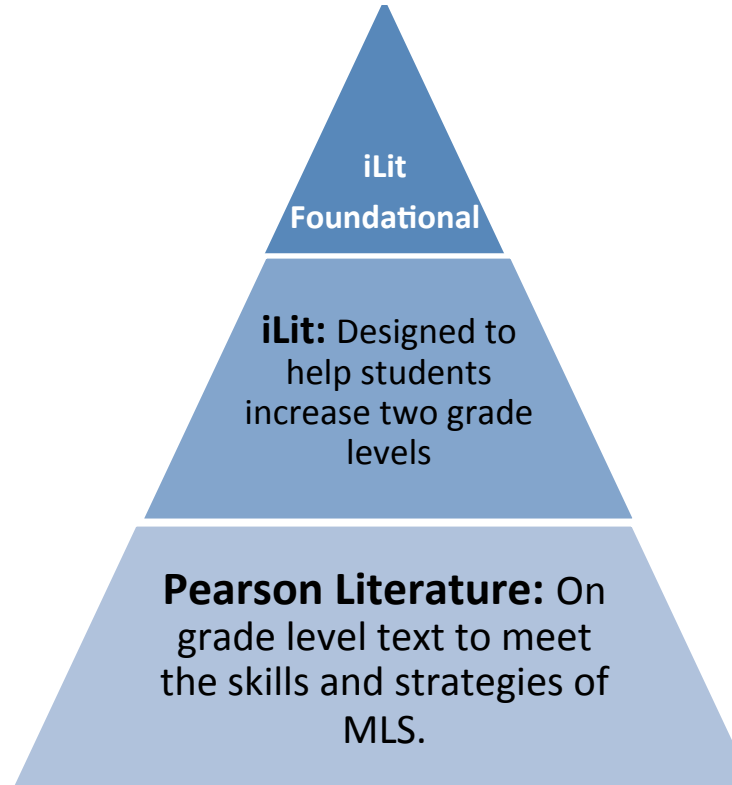
- The focus is on 5<sup>th</sup> and 6<sup>th</sup> grade math teachers to increase their math content to prepare students for middle school
- MLS standards moving functions, expressions and equations to 7<sup>th</sup> and 8<sup>th</sup> grade
- A deeper focus on the assessment, claims and targets
- Teachers will be provided on-site and one-on-one professional development



## Elementary



## Middle School



## Secondary



**Screener: NWEA (K-8) SRI (9-12)**

**Progress Monitoring Tool: STAR/NWEA**

# Kindergarten - 8<sup>th</sup> Grade

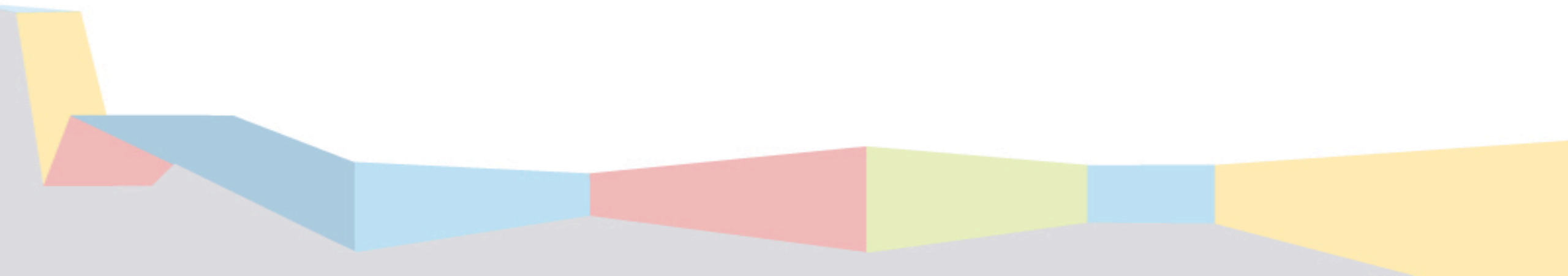
## Beginning of Year Reading RIT

### Cut Scores

Grade	Tier III	Tier II	Tier I
Kindergarten	Below 135	135 – 141	142 and above
1st	Below 151	152 - 159	160 and above
2nd	Below 165	166 - 175	176 and above
3rd	Below 180	181 - 189	190 and above
4th	Below 190	191 - 198	199 and above
5th	Below 197	198 - 206	207 and above
6th	Below 202	203 - 211	212 and above
7th	Below 206	207 - 215	216 and above
8th	Below 209	210 - 218	219 and above

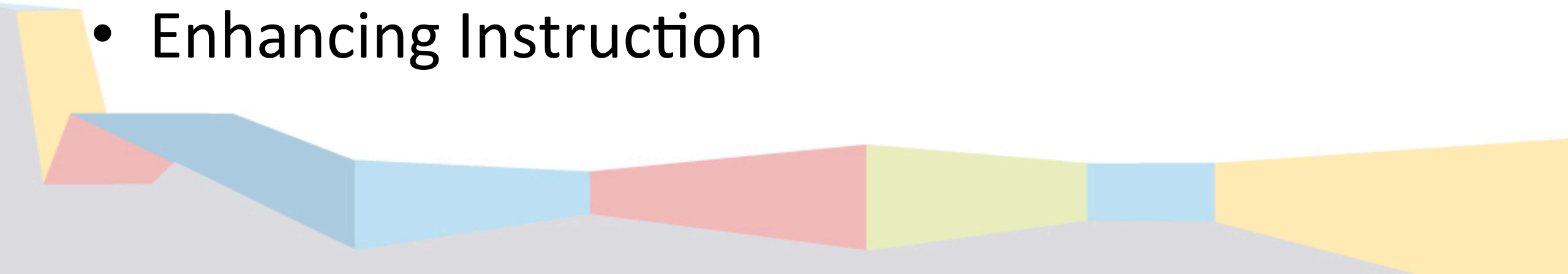
# Questions?

# Curriculum and Instruction



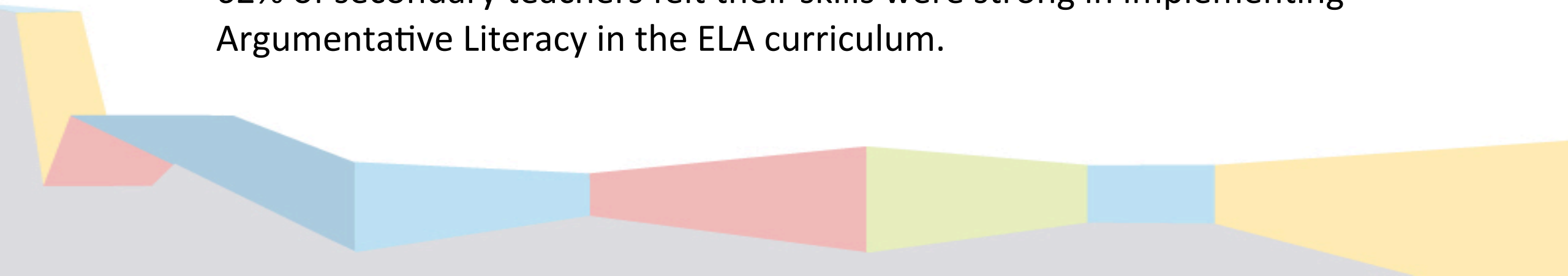
# Curriculum and Instruction

- Response to SMART Goals
- Lessons from Student Data
- Effectiveness and Refinement of Implementation
- Enhancing Instruction



# SMART Goals

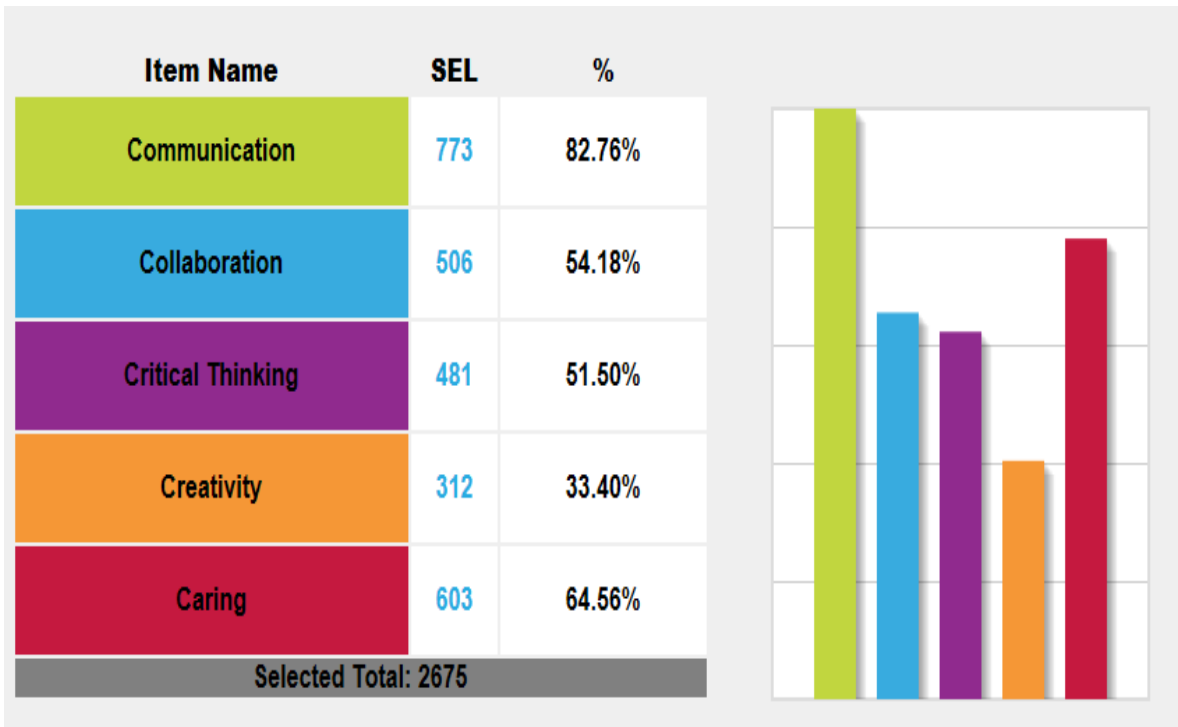
- Integrated Argumentative Literacy in all four cores at all grade levels.
- Developed a 3-step process for teachers to build argumentative literacy in all content areas.
- Conducted a curriculum survey asking about teachers' self-reported use and understanding of Argumentative Literacy
  - 63% of elementary teachers felt their skills were strong in implementing Argumentative Literacy in all areas across the curriculum.
  - 62% of secondary teachers felt their skills were strong in implementing Argumentative Literacy in the ELA curriculum.



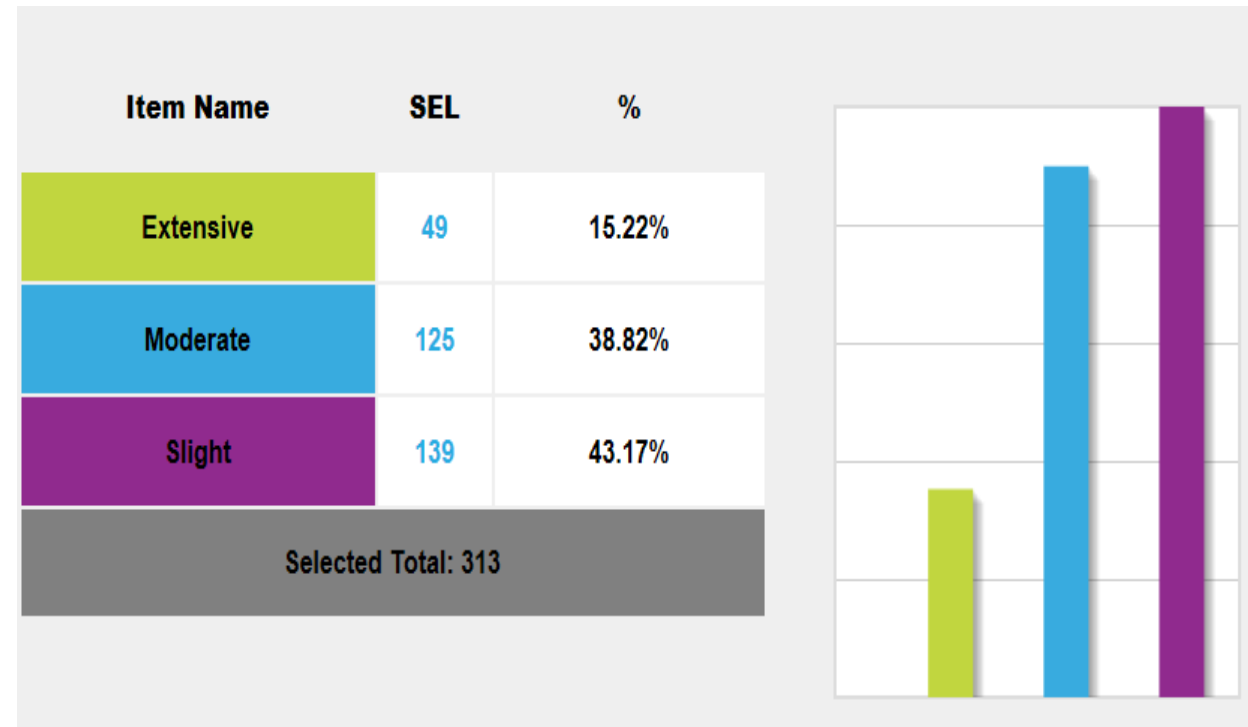


# Walkthrough Data

## 5Cs Data



## Argumentative Literacy

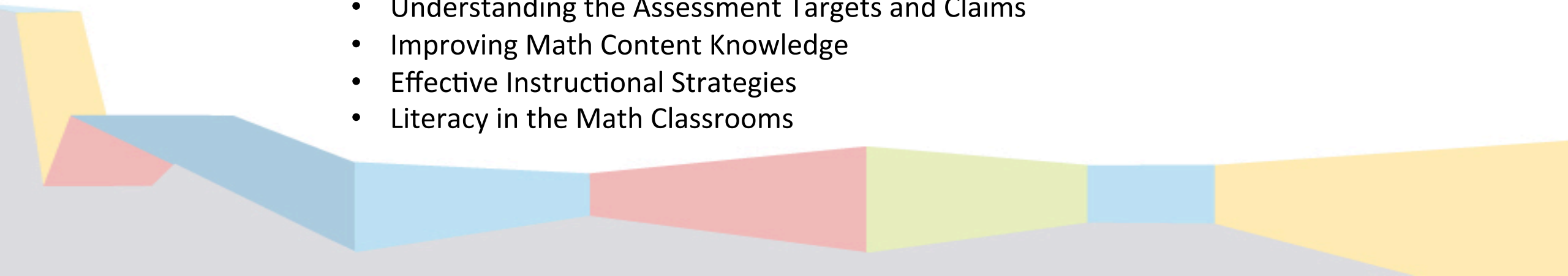


# Literacy Professional Development for Teachers

Month	Elementary (K – 6 <sup>th</sup> Grade – excluding 6 <sup>th</sup> at FLA & LCPA)	Secondary (7 <sup>th</sup> – 12 <sup>th</sup> Grade – including 6 <sup>th</sup> at FLA & LCPA)
August	<p><b>8/4&amp;5/2015 Overview of the KCPS Literacy Initiatives</b> (Presented by CIPD ELA Team)</p> <ol style="list-style-type: none"> <li><b>1) Literacy Block Components</b></li> <li><b>2) Introduction to the KCPS Benchmark Assessments</b></li> <li><b>3) The KCPS Guided Reading Structure</b></li> </ol> <p><b>8/19/15 Administering the AlphaKids/QRI Reading Inventories</b> (Presented by Literacy Leaders)</p>	<p><b>8/4/2015 Cross-Text Analysis &amp; Argumentative Literacy</b> (Presented by CIPD ELA Team)</p> <p><b>8/19/15 CLOSE Reading Science, Social Studies, and Math Texts</b> (Presented by Secondary Literacy Leaders)</p>
September	<p><b>9/2/15 Analyzing Reading Inventories/Running Records</b> (Presented by Literacy Leaders)</p> <p><b>9/16/15 Using Assessment Data for Data Cycles &amp; Guided Reading</b> (Led by Literacy Leaders)</p> <p><b>9/25/2015 Planning for Guided Reading Groups</b> (Led by CIPD ELA Team)</p>	<p><b>9/2/15 Using and Analyzing SRI to Determine Reading Level</b> (Presented by Secondary Literacy Leaders)</p> <p><b>9/16/15 Using QRI and Decoding Assessments to Target Needs of Struggling Readers</b> (Presented by Secondary Literacy Leaders)</p> <p><b>9/25/15 Planning for Differentiated Lessons Based on Data</b> (Led by CIPD ELA Team)</p>
October - December	<p>Prior to the end of September, each principal will submit a plan outlining their Wednesday and embedded Professional Development. Plans will focus on the KCPS Literacy Initiatives. A menu of topics and modules will be available for schools to select from based upon the needs indicated by school data.</p>	<p>Prior to the end of September, each school will submit a plan outlining their Wednesday and embedded Professional Development. Plans will focus on the KCPS Literacy Initiatives. A menu of topics and modules will be available for schools to select from if they desire.</p>
January - March	<p>Prior to the end of the 1<sup>st</sup> semester, each school will submit a plan outlining their Wednesday and embedded Professional Development for the second semester. Plans will focus on the KCPS Literacy Initiatives for SY2015-2016 and preparations for the initiatives for SY2016-2017.</p>	<p>Prior to the end of the 1<sup>st</sup> semester, each school will submit a plan outlining their Wednesday and embedded Professional Development for the second semester. Plans will focus on the KCPS Literacy Initiatives for SY2015-2016 and preparations for the initiatives for SY2016-2017.</p>

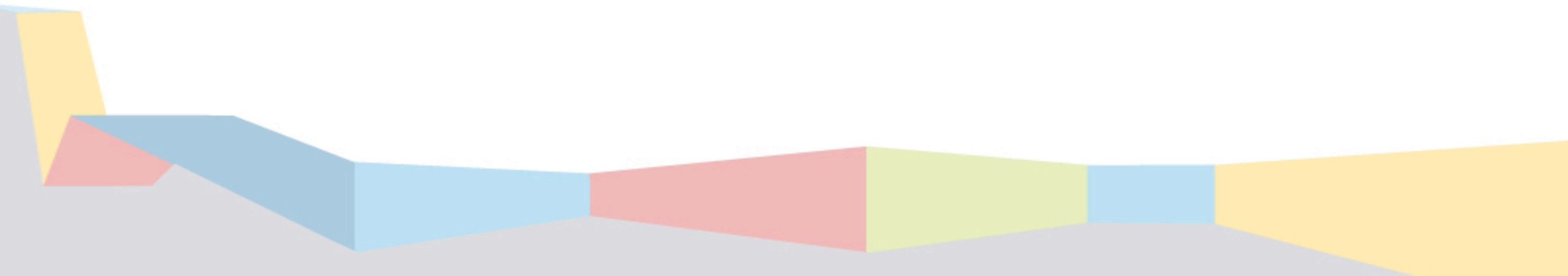
# Math Professional Development for Teachers

- Regular PD sessions will be conducted every other Monday.
- Make and Take PD sessions will also be provided once a semester.
- On-site PD sessions and one-on-one coaching will also be provided as needed.
- Sessions will focus on the following:
  - *Missouri Learning Standards:*
    - What they are and what they mean
    - Understanding the Assessment Targets and Claims
    - Improving Math Content Knowledge
    - Effective Instructional Strategies
    - Literacy in the Math Classrooms



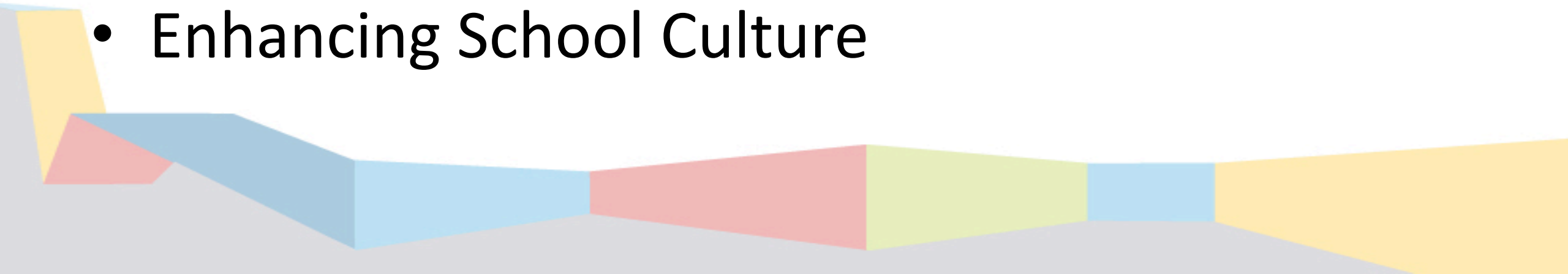
# Questions?

# School Leadership



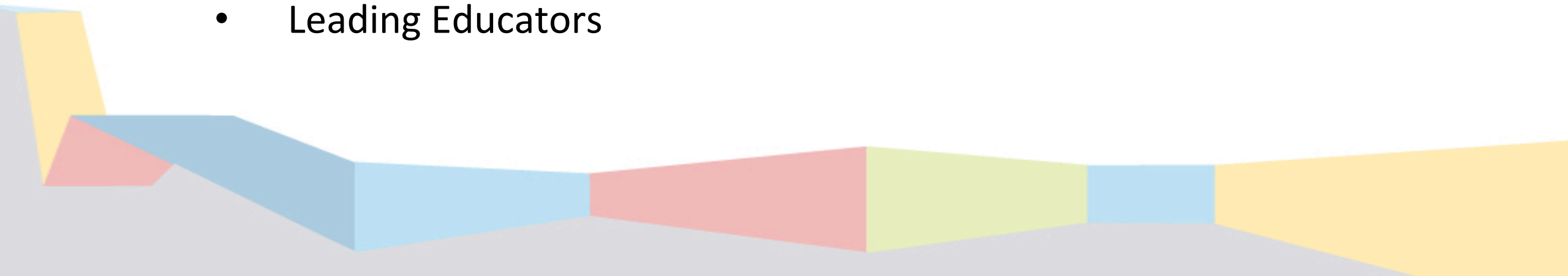
# School Leadership

- Response to SMART Goals
- Lessons from Student Data
- Effectiveness and Refinement of Building Leadership
- Enhancing School Culture

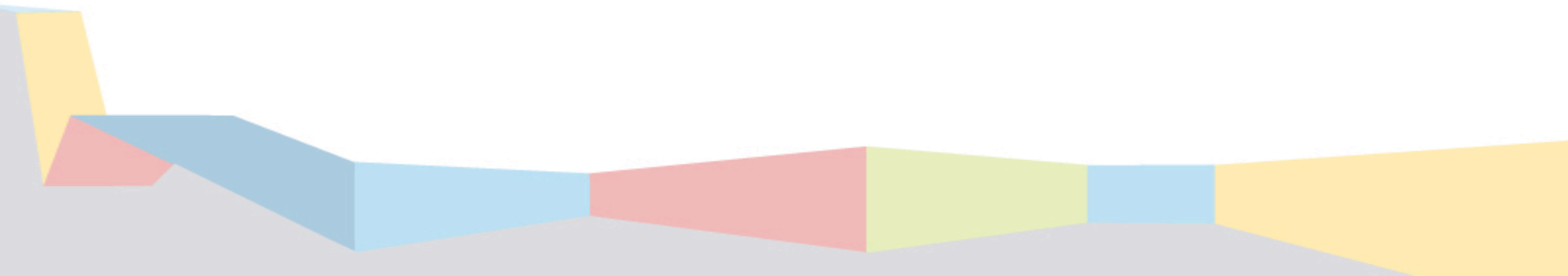


# Leadership Development

- National & International Author Series
- Monthly Focused Leadership Professional Development
- Summer Principals' Retreat
- Aspiring Principals' Academy
- SAM Project
- New Principal Mentoring Program
- National Institute of School Leadership
- Leading Educators

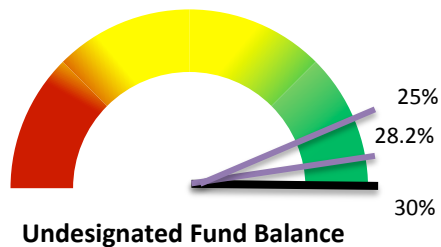
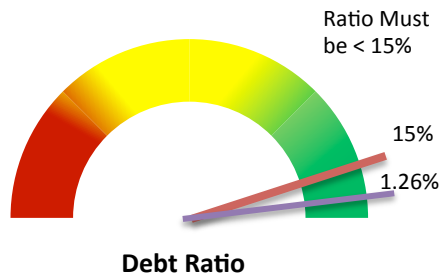
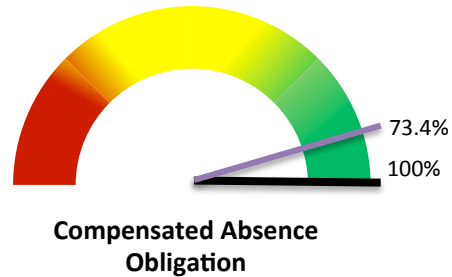


# Business and Finance

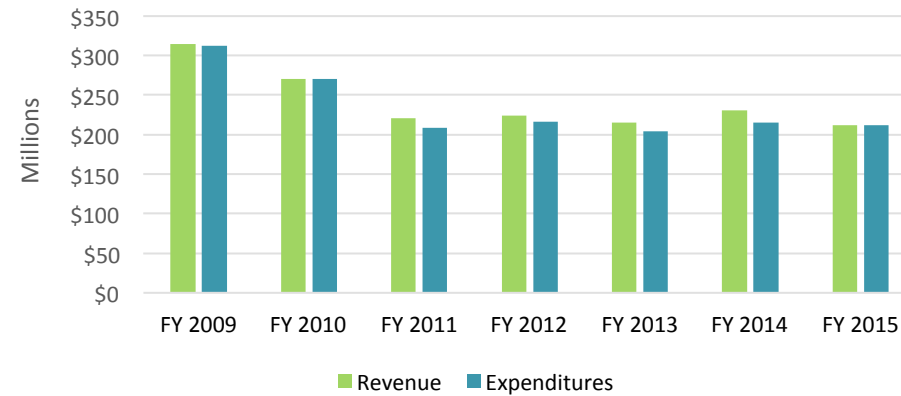




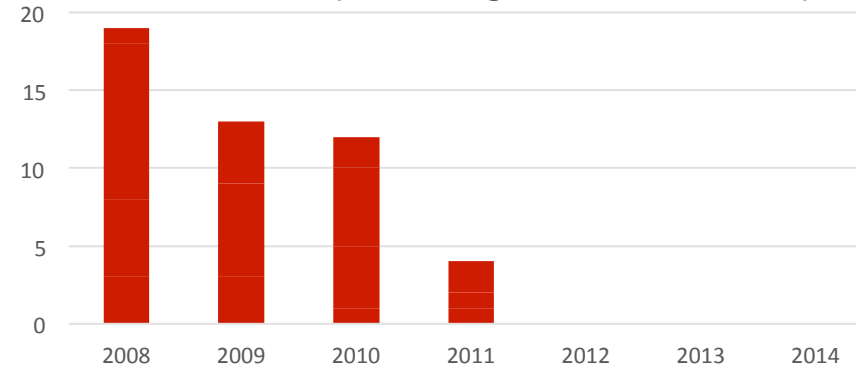
# Indicators of Financial Stability – as of 6/30/2014



Seven Year Comparative Revenue and Expenditures  
(Operating, Grants and Child Nutrition)



Compliance Audit – Number of Findings for the Past 6 Years (Zero findings in 2012, 2013 & 2014)



# Comparative Summary of Adopted Budget to Proposed Budget

	FY15 Amendment I <u>Budget</u>	FY16 Proposed <u>Budget</u>	FY15 vs FY16 Variance** Increase (Decrease)
Revenue	237,746,474	220,898,472	(16,848,002)
Expenditures	237,463,290	220,474,595	(16,988,695)
Fund Transfer	-	(17,678)	(17,678)
Revenue Over Expenditures	283,184	406,199	123,015
Net Beginning Fund Balance	68,738,108	66,643,487	(2,094,621)
Ending Fund Balance	69,021,292	67,049,686	(1,971,606)
Less: Restricted Fund Balance	20,420,091	18,401,102	(2,018,989)
General Fund Balance	48,601,201	48,648,584	47,383

BUDGET VARIANCE by PROGRAM**				
	<u>Operating</u>	<u>Grants</u>	<u>Child Nutrition</u>	<u>Total</u>
Revenue	1,347,137	(18,086,179)	(108,960)	(16,848,002)
Expenditures	1,224,122	(18,086,179)	(126,638)	(16,988,695)
Fund Transfer	-	-	(17,678)	(17,678)
Revenue Over Expenditures	123,015	-	-	123,015
Net Beginning Fund Balance	(2,094,621)	-	-	(2,094,621)
Ending Fund Balance	(1,971,606)	-	-	(1,971,606)
Less: Restricted Fund Balance	(2,018,989)	-	-	(2,018,989)
General Fund Balance	47,383	-	-	47,383

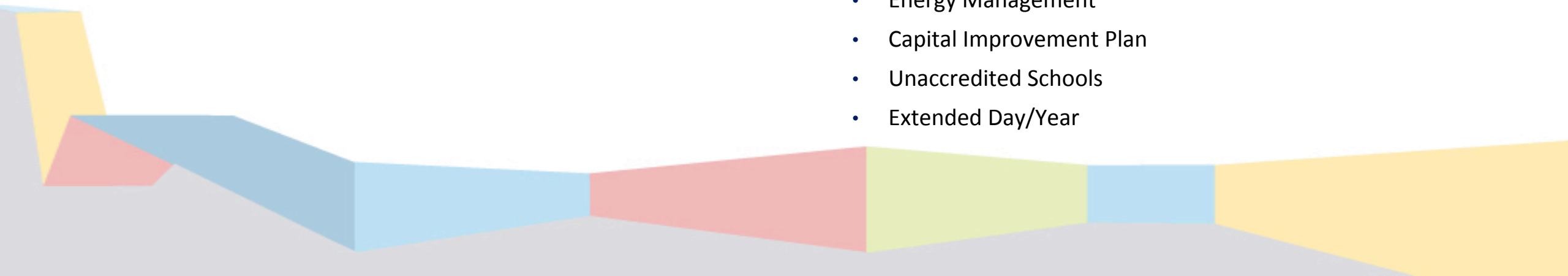
# FY16 Projection Highlights

## REVENUE

- District enrollment projected to increase in 2015-2016
- Assessed valuation projected to increase in 2015
- Proposition C (1% sales tax) revenue projected to increase
- State foundation formula's proration factor @100% for hold-harmless districts
- Grants projected to decrease by 8%

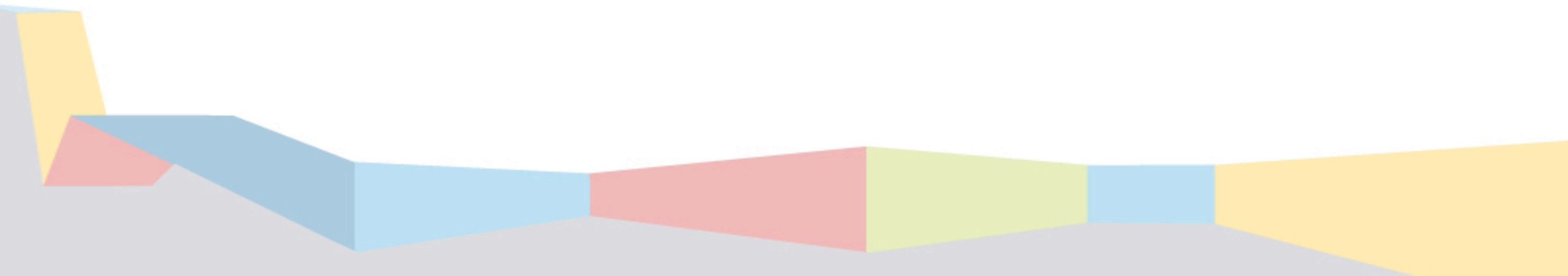
## EXPENDITURES

- One-to-One Initiative
- Two Fully Implemented Middle Schools
- Tutoring Programs
- Competitive Salaries and Benefits
- Literacy Labs
- City Year Program
- Expanded CTE Programs
- Early College Academy
- Alternative Placements
- Expanded Activity & Athletic Programs
- Energy Management
- Capital Improvement Plan
- Unaccredited Schools
- Extended Day/Year



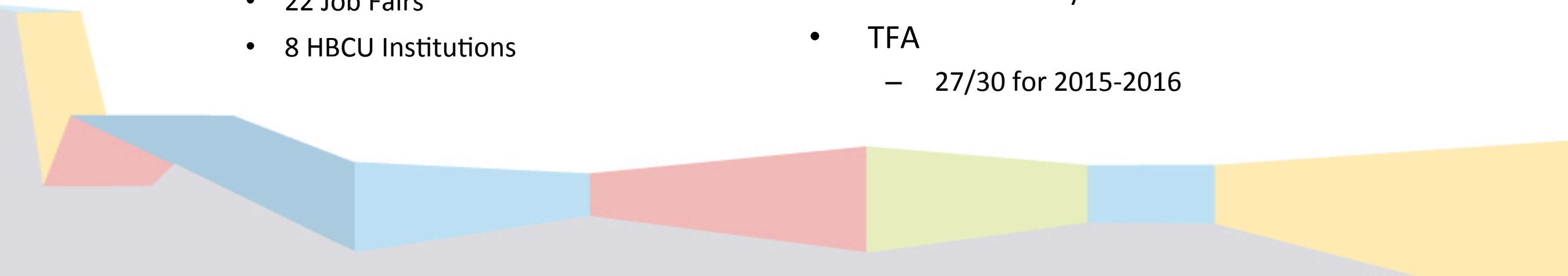
# Questions?

# Human Resources



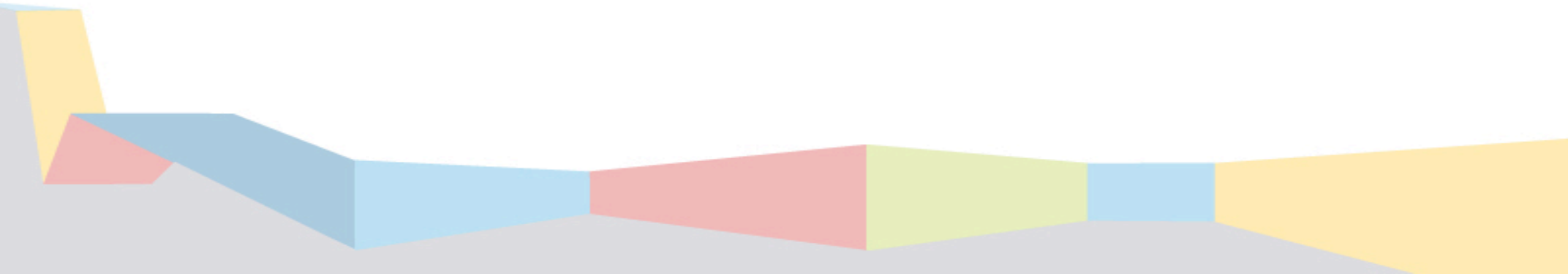
# Human Resources Update

- Professional Development Schools
  - Maintained
- Collaboration with Higher Education
  - Expanded
  - 4 Fellows from MU in 2015-2016
  - 4 Student Teachers from MU in 2015-2016
  - Continued working relationship with our colleges and HBCU's
    - 22 Job Fairs
    - 8 HBCU Institutions
- Highly Qualified
- Performance Management
  - 121 Monitored this year
  - 37 Not invited back
- Early Notice Stipend
  - 43 Early Retirement /Resignation
- Customer Service
  - Survey in Fall 2015
  - 2014 Survey – Small N
- TFA
  - 27/30 for 2015-2016



# Questions?

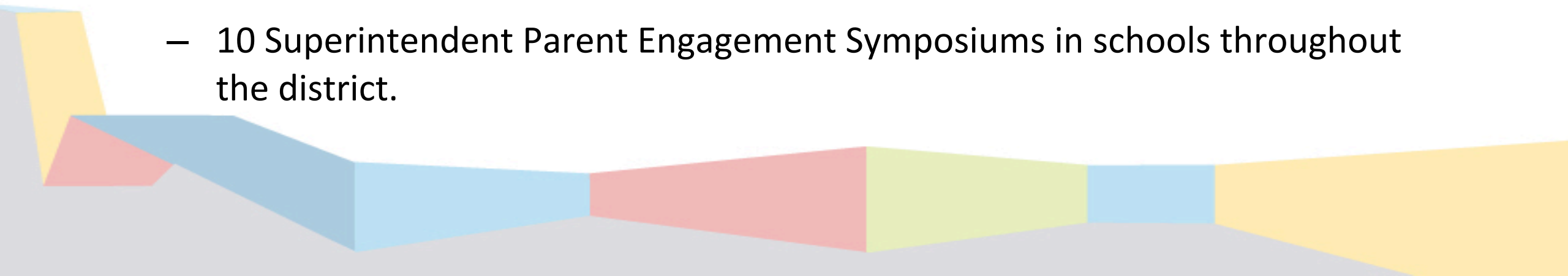
# Parent & Community Engagement





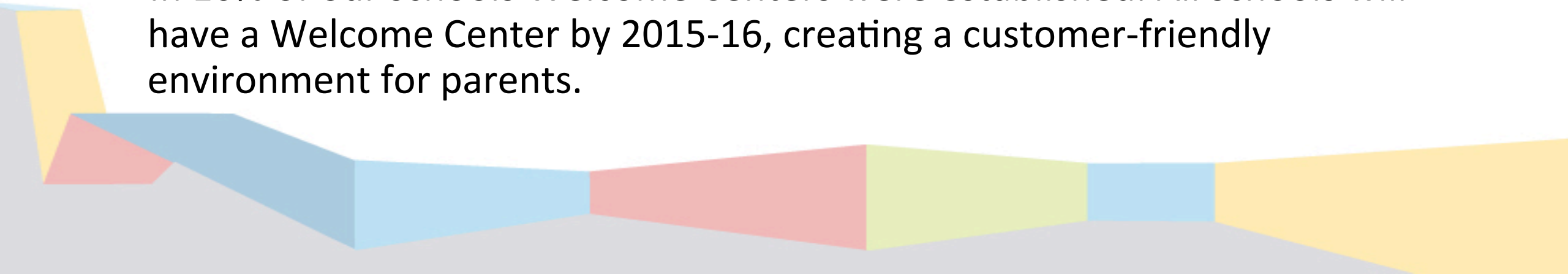
# Parent & Community Engagement Update

- Twenty-six new formal partners were secured this year. All with signed MOU's and at no cost to the district.
- Number of volunteers increased by 17%. Our goal was 10%. We have nearly 900 individuals volunteering their time in our schools.
- Outreach to parents and the community increased with:
  - 10 community dialogues with neighborhood associations and the NE Chamber of Commerce
  - 10 Superintendent Parent Engagement Symposiums in schools throughout the district.



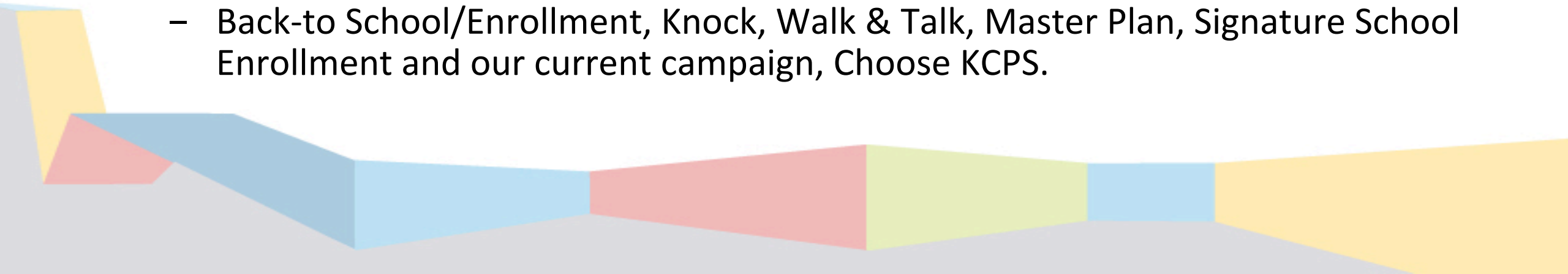
# Parent & Community Engagement Update

- In 14 of 37 schools, parent groups were either built from the ground up or saw an increase in the level of participation and involvement.
- Innovative partnerships were developed with the help of Parent Liaisons and the administration at the district level to meet the needs of our schools, students and families:
  - Community gardens
  - School supply drives
  - School uniform and coat drives
- In 10% of our schools Welcome Centers were established. All schools will have a Welcome Center by 2015-16, creating a customer-friendly environment for parents.



# Marketing & Branding

- Goal is to the increase enrollment, change perceptions and share the good news.
- Marketing plan must be two-pronged: District and School-based.
- Marketing plan for each school will help increase enrollment and tout special programs and successes.
- Promotional efforts this year included:
  - Billboards, newspaper ads, radio spots, videos, web presence, social media and showcase events
- Campaign efforts this year included:
  - Back-to School/Enrollment, Knock, Walk & Talk, Master Plan, Signature School Enrollment and our current campaign, Choose KCPS.



# Marketing & Branding

- To help better understand our community, marketing research began in the late fall and a final report has been completed and delivered.
- Data from the report will be used to develop a comprehensive, strategic communications/marketing plan.
- A local marketing firm will be hired to assist KCPS in executing the communications and marketing plan.

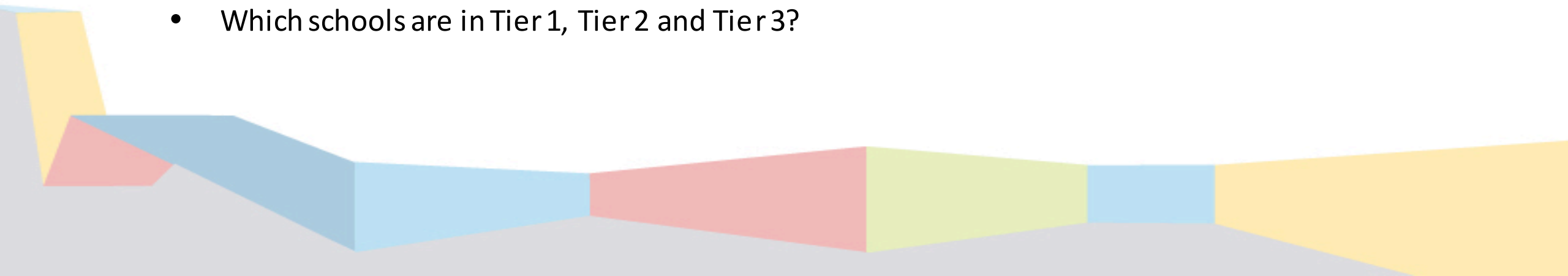


# Questions?

# Feedback

## Questions from feedback cards – April 28, 2015

- Not so much a question as a concern, on the number of kindergarten students suspended. Is there any discussion on using restorative justice instead of OSS?
- What happens when parents don't attend conferences?
- Which schools are in Tier 1, Tier 2 and Tier 3?



# RSIT Breakout Discussion



# Feedback/Requests



# Monthly Meeting Date

