



butterfly



butterfly



For More Quality Materials Like these VISIT...

MontessoriHelper.com

Montessori Made Easy I



This member of the Phylum Arthropoda, Class Insecta, Order Lepidoptera is a flying Insect with two pairs of delicate wings. It has three pairs of jointed wings and a proboscis through which it sips nectar.

butterfly

This member of the Phylum Arthropoda, Class Insecta, Order Lepidoptera is a flying Insect with two pairs of delicate wings. It has three pairs of jointed wings and a proboscis through which it sips nectar.

butterfly

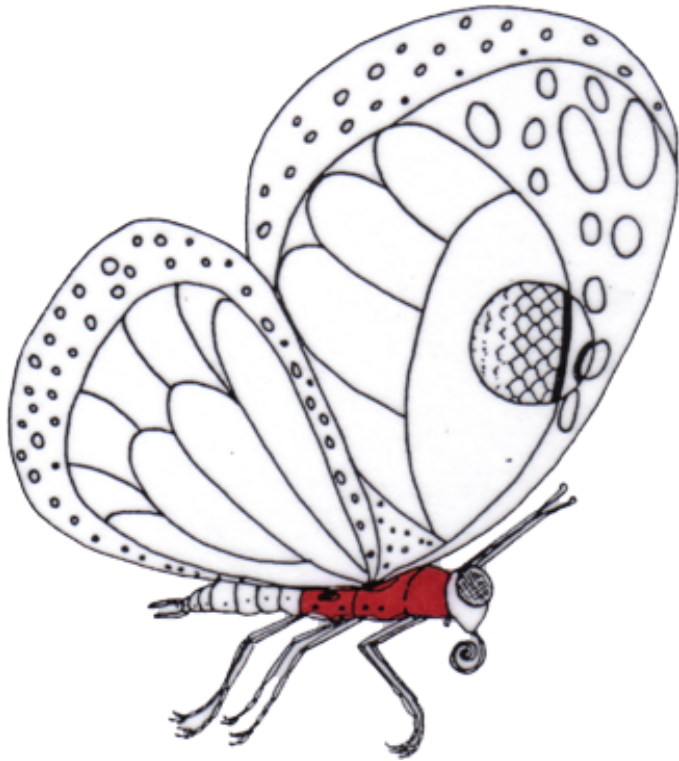


For More Quality Materials Like these VISIT...

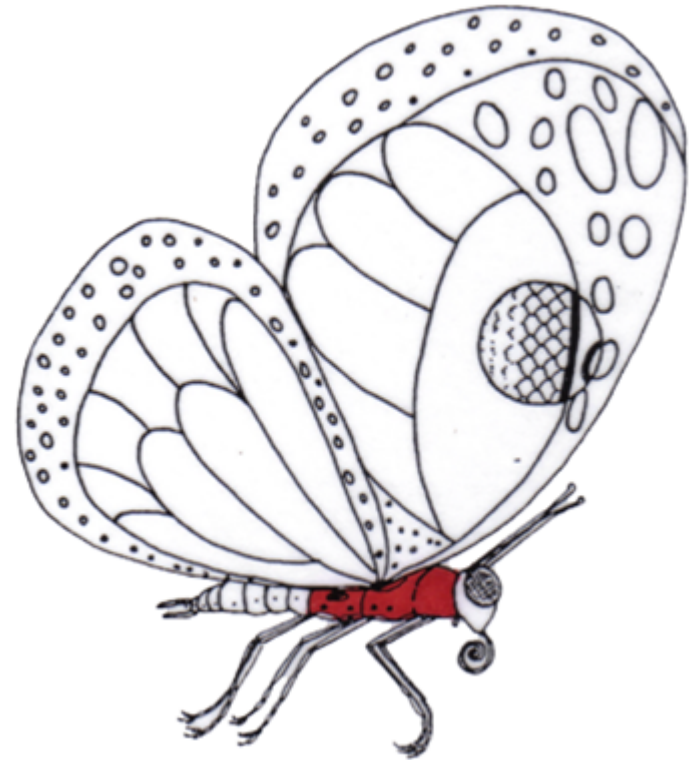
MontessoriHelper.com

Montessori Made Easy I





thorax



thorax



For More Quality Materials Like these VISIT...

MontessoriHelper.com

Montessori Made Easy I



This is broken into three segments, each with a pair of jointed legs. Four wings are attached to two of the segments. On the second and third segments the spiracles are found and in many families the auditory organs are found on the third segment, or metathorax

thorax

This is broken into three segments, each with a pair of jointed legs. Four wings are attached to two of the segments. On the second and third segments the spiracles are found and in many families the auditory organs are found on the third segment, or metathorax

thorax

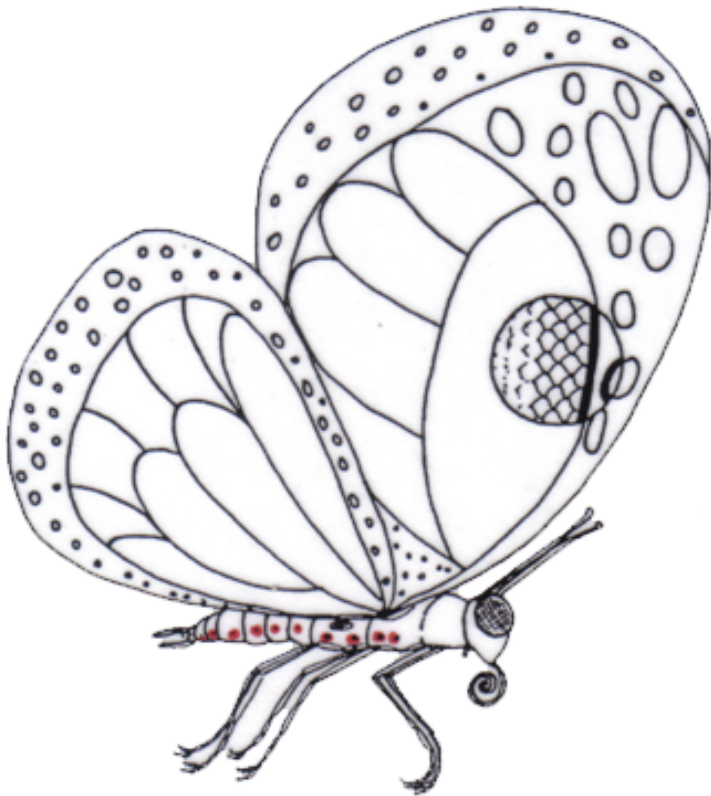


For More Quality Materials Like these VISIT...

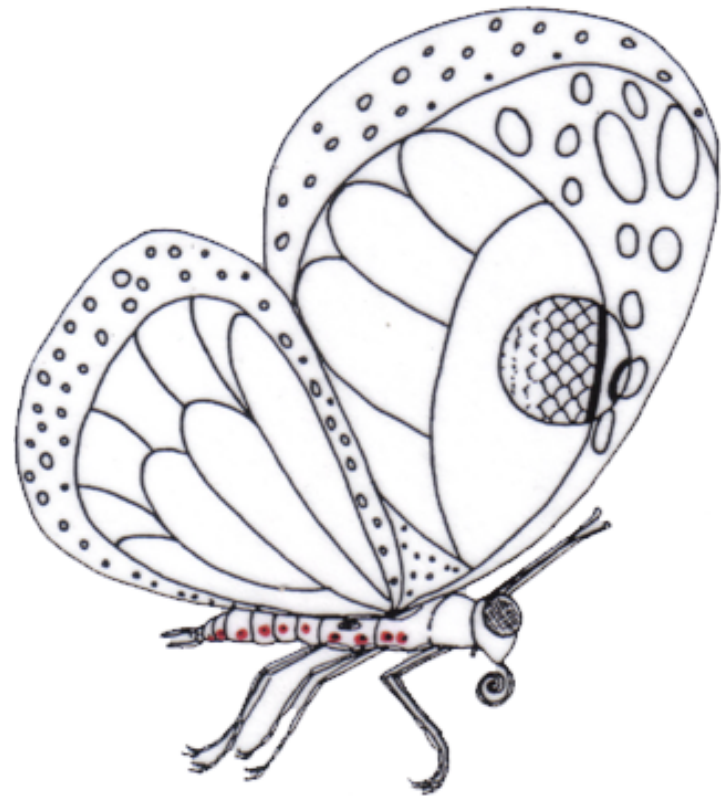
MontessoriHelper.com

Montessori Made Easy I





spiracles



spiracles



For More Quality Materials Like these VISIT...

MontessoriHelper.com

Montessori Made Easy I



These openings along
part of the thorax and
abdomen allow air to be
pumped in and out of the
trachea with help from
movement of the winds
and abdomen

spiracles

These openings along
part of the thorax and
abdomen allow air to be
pumped in and out of the
trachea with help from
movement of the winds
and abdomen

spiracles

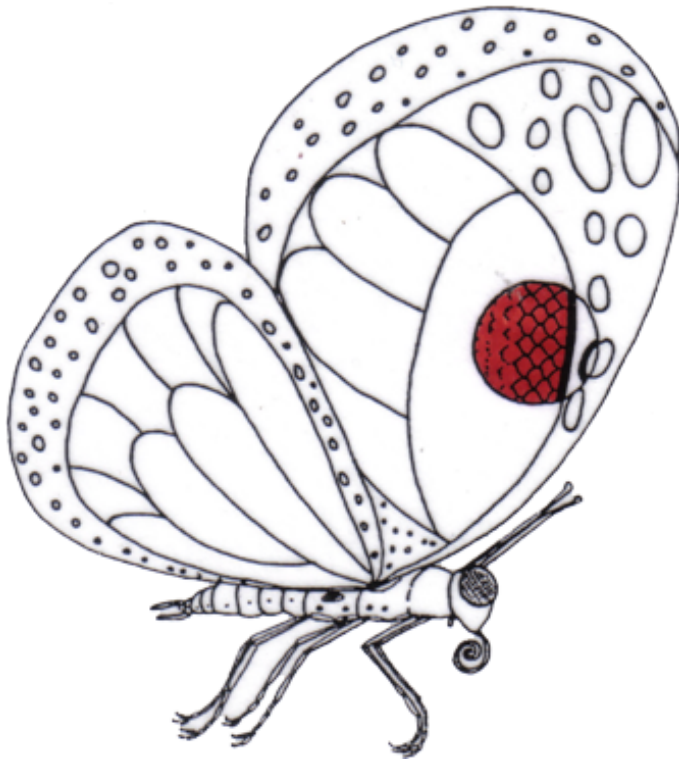


For More Quality Materials Like these VISIT...

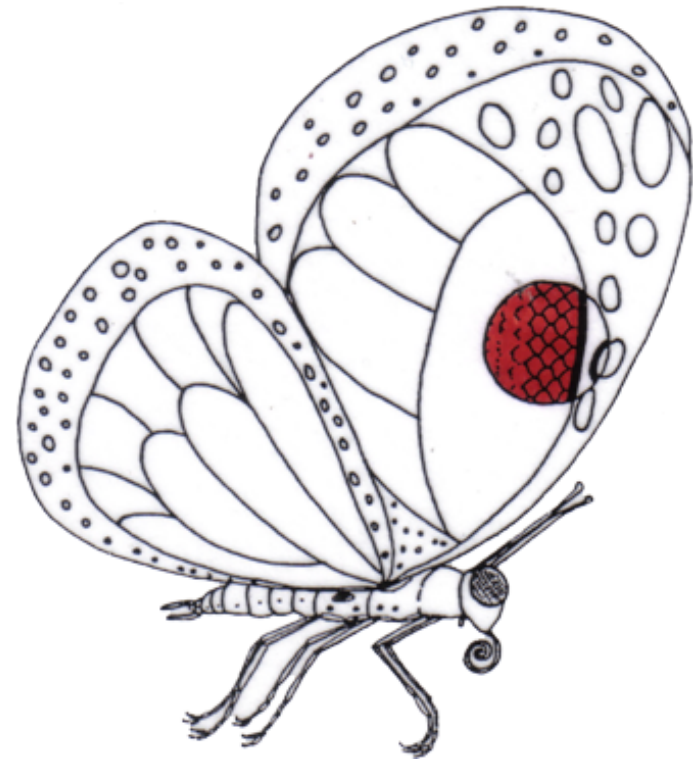
MontessoriHelper.com

Montessori Made Easy I





scales



scales



For More Quality Materials Like these VISIT...

MontessoriHelper.com

Montessori Made Easy I



These are tiny overlapping shingles, which give the wings a distinctive color and pattern when light is reflected off them.

scales

These are tiny overlapping shingles, which give the wings a distinctive color and pattern when light is reflected off them.

scales

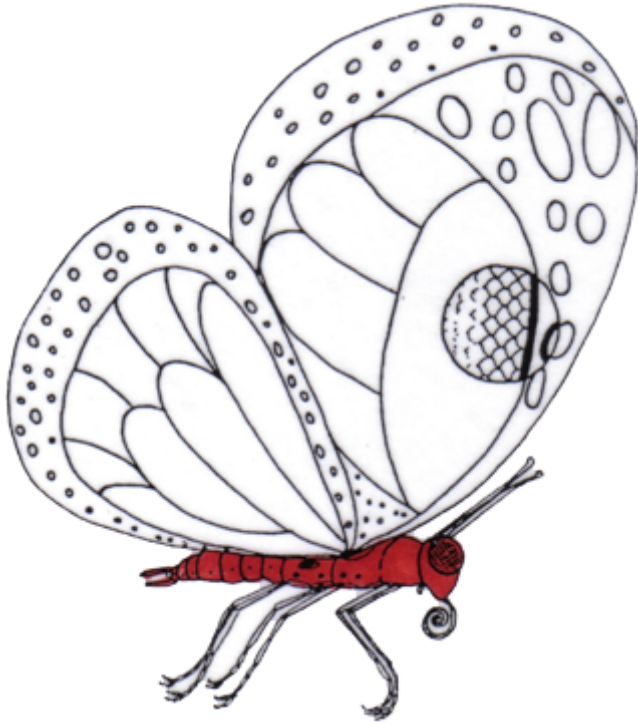


For More Quality Materials Like these VISIT...

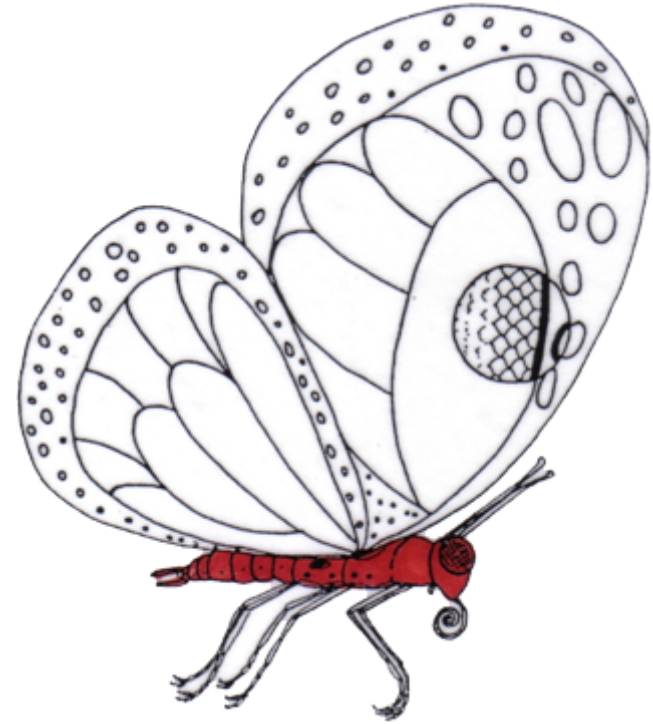
MontessoriHelper.com

Montessori Made Easy I





body



body



For More Quality Materials Like these VISIT...

MontessoriHelper.com

Montessori Made Easy I



The butterfly has a head
thorax and abdomen.
These parts are usually
brown or black in color.

body

The butterfly has a head
thorax and abdomen.
These parts are usually
brown or black in color.

body

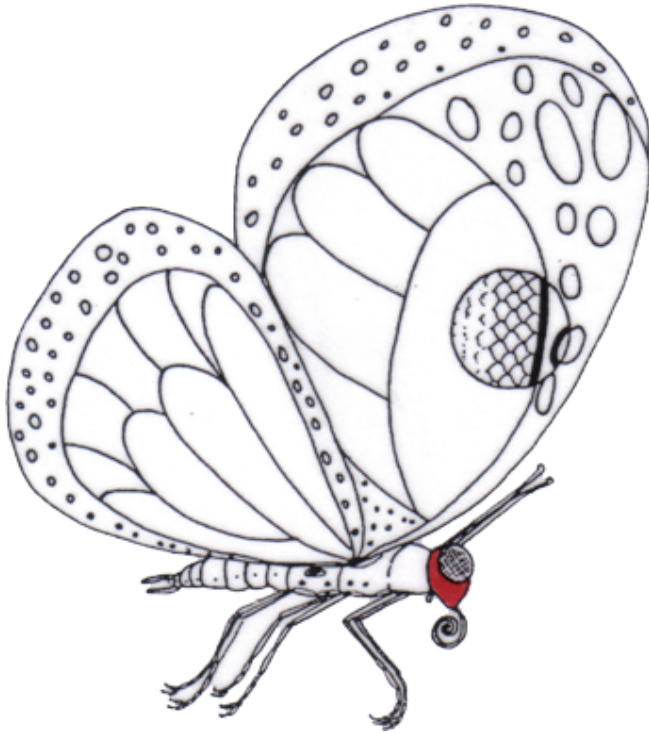


For More Quality Materials Like these VISIT...

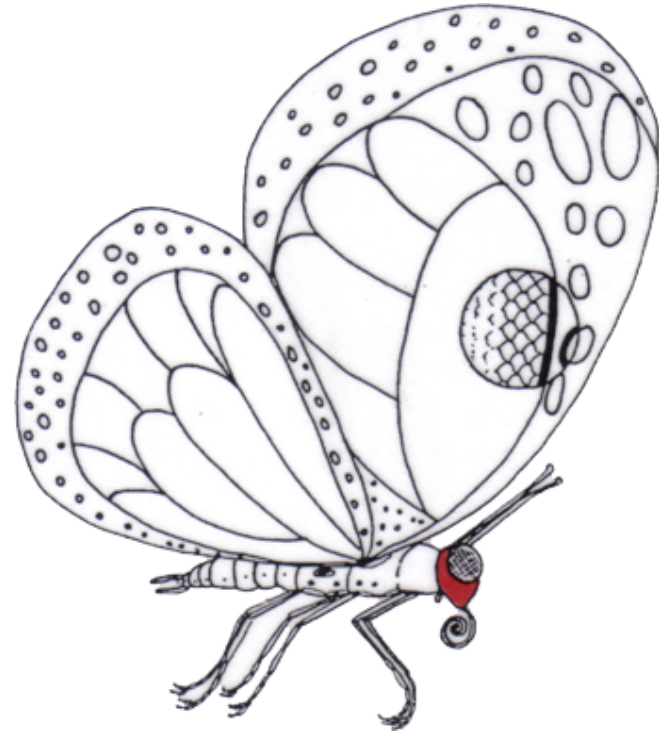
MontessoriHelper.com

Montessori Made Easy I





head



head



For More Quality Materials Like these VISIT...

MontessoriHelper.com

Montessori Made Easy I



Two long antennae
originate from here as well
as a pair of ocelli, the
mouth and sensory
organs.

head

Two long antennae
originate from here as well
as a pair of ocelli, the
mouth and sensory
organs.

head

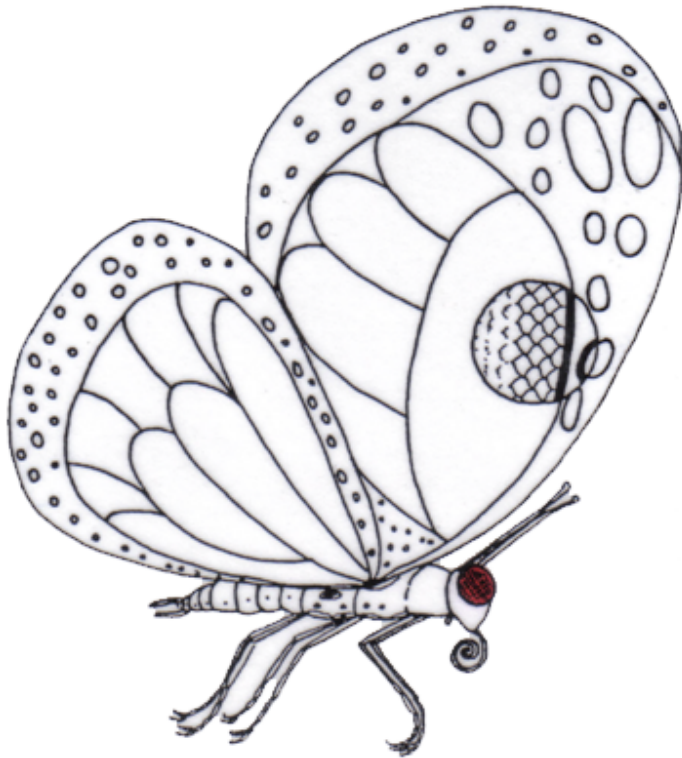


For More Quality Materials Like these VISIT...

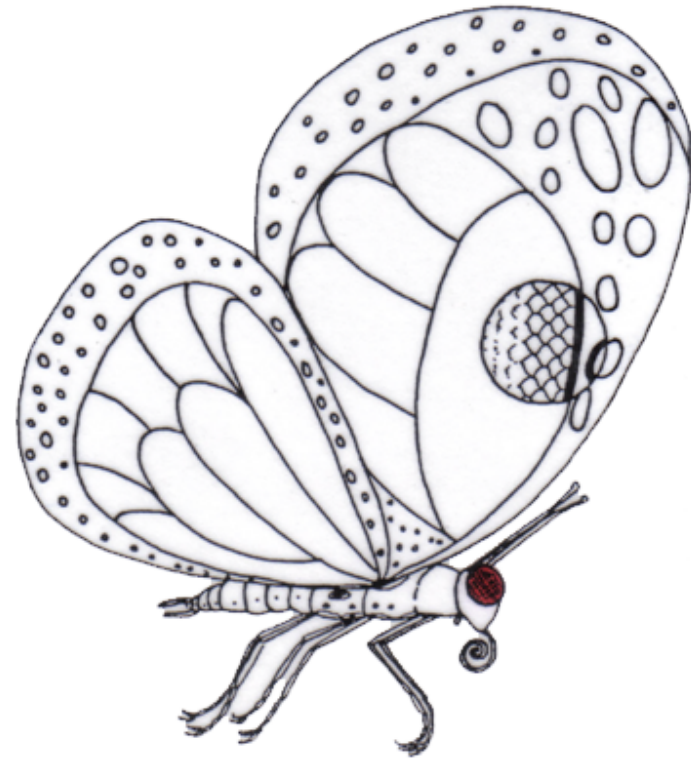
MontessoriHelper.com

Montessori Made Easy I





eye



eye



For More Quality Materials Like these VISIT...

MontessoriHelper.com

Montessori Made Easy I



There is a large
compound set of these
organs of vision on each
side of the head and some
butterflies also have a
second simple set above
the compound set.

eye

There is a large
compound set of these
organs of vision on each
side of the head and some
butterflies also have a
second simple set above
the compound set.

eye

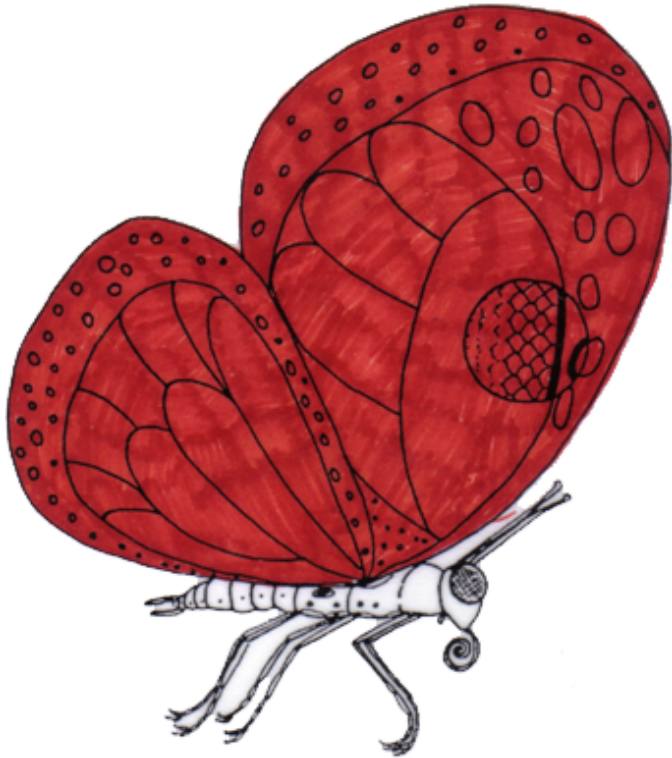


For More Quality Materials Like these VISIT...

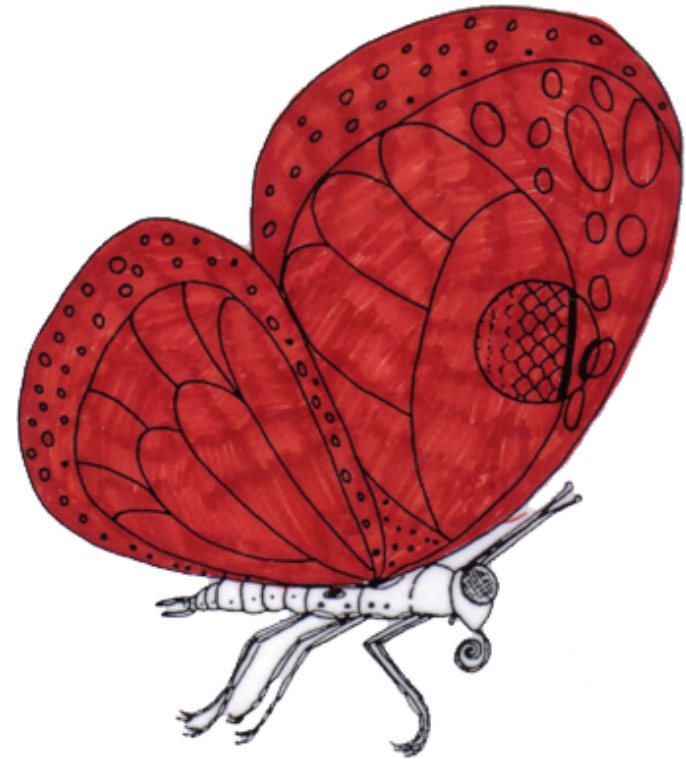
MontessoriHelper.com

Montessori Made Easy I





wings



wings



For More Quality Materials Like these VISIT...

MontessoriHelper.com

Montessori Made Easy I



Butterflies have two pairs of these, which enable flight.

They are thin, brightly colored and covered in scales. Their hollow ribbing, or veins provide support.

When at rest these are folded in an upright position.

wings

Butterflies have two pairs of these, which enable flight.

They are thin, brightly colored and covered in scales. Their hollow ribbing, or veins provide support.

When at rest these are folded in an upright position.

wings

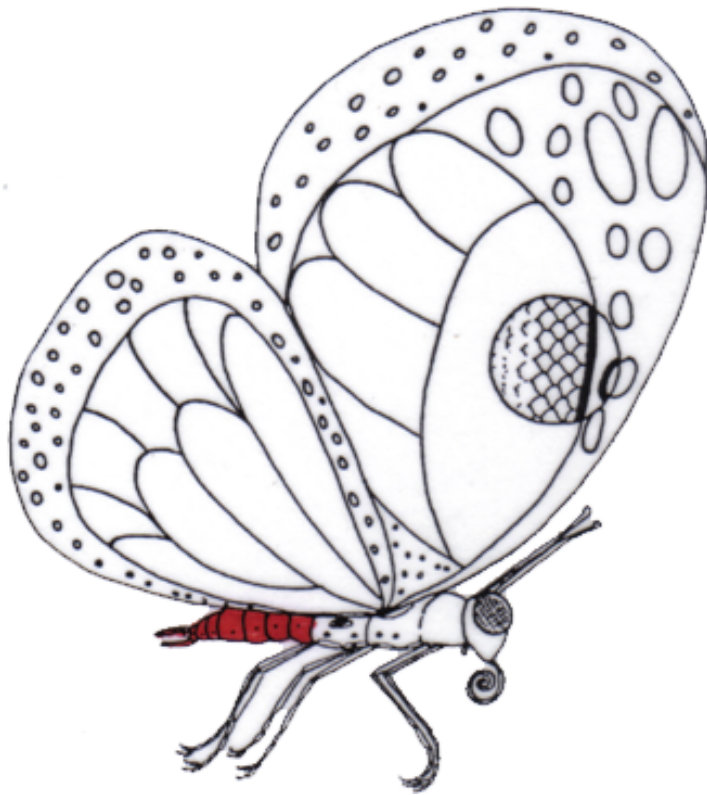


For More Quality Materials Like these VISIT...

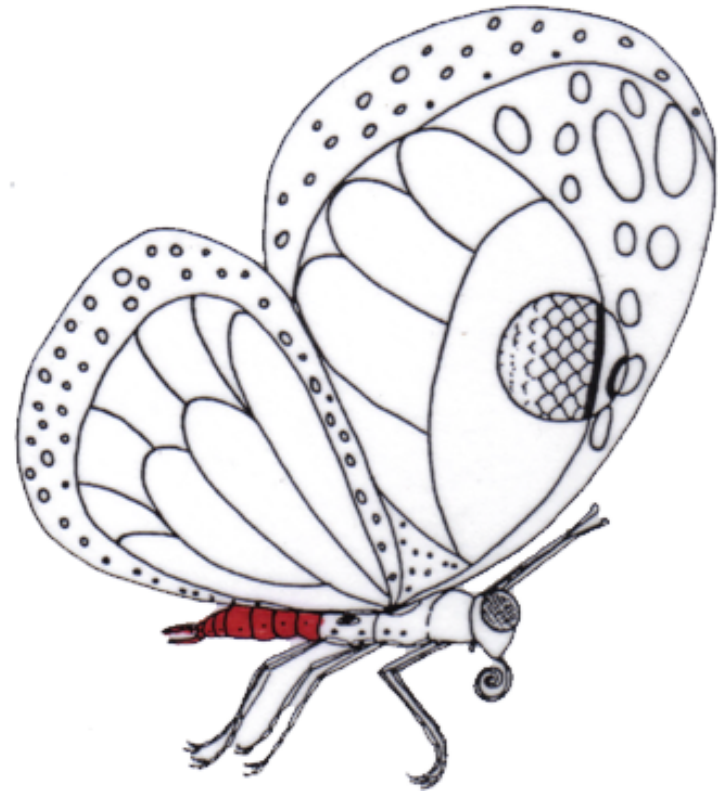
MontessoriHelper.com

Montessori Made Easy I





abdomen



abdomen



For More Quality Materials Like these VISIT...

MontessoriHelper.com

Montessori Made Easy I



This is the segmented
latter portion of the body
containing genitalia and
spiracles.

abdomen

This is the segmented
latter portion of the body
containing genitalia and
spiracles.

abdomen

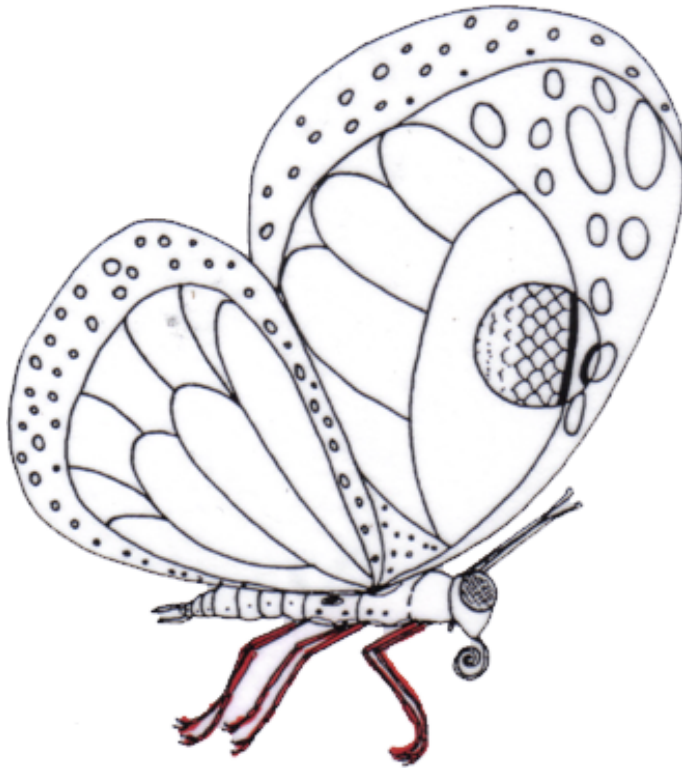


For More Quality Materials Like these VISIT...

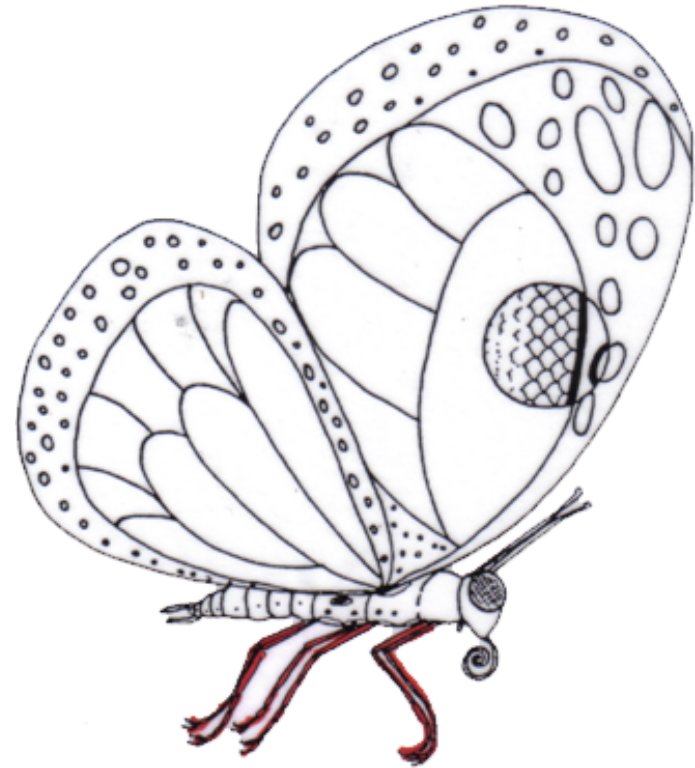
MontessoriHelper.com

Montessori Made Easy I





legs



legs



For More Quality Materials Like these VISIT...

MontessoriHelper.com

Montessori Made Easy I



Butterflies have three
pairs of these long jointed
appendages.
Some species have taste
buds on the soles and
distal ends.

legs

Butterflies have three
pairs of these long jointed
appendages.
Some species have taste
buds on the soles and
distal ends.

legs

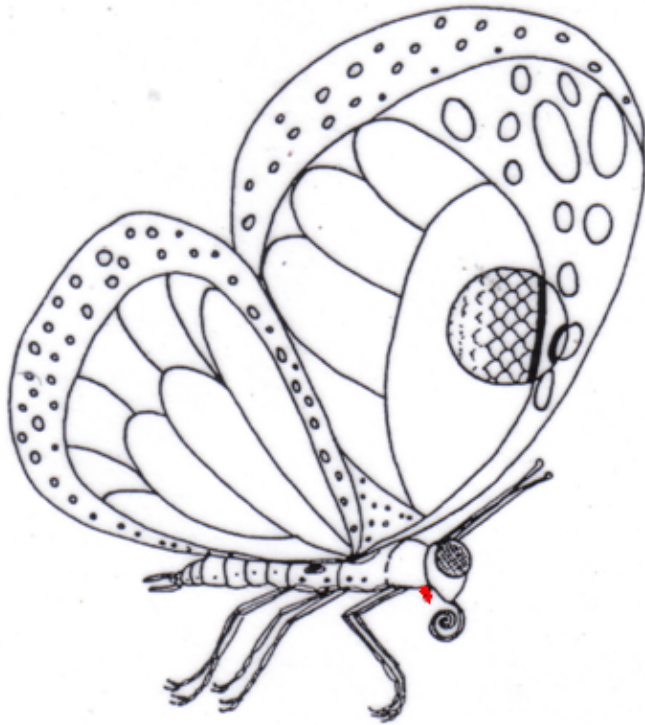


For More Quality Materials Like these VISIT...

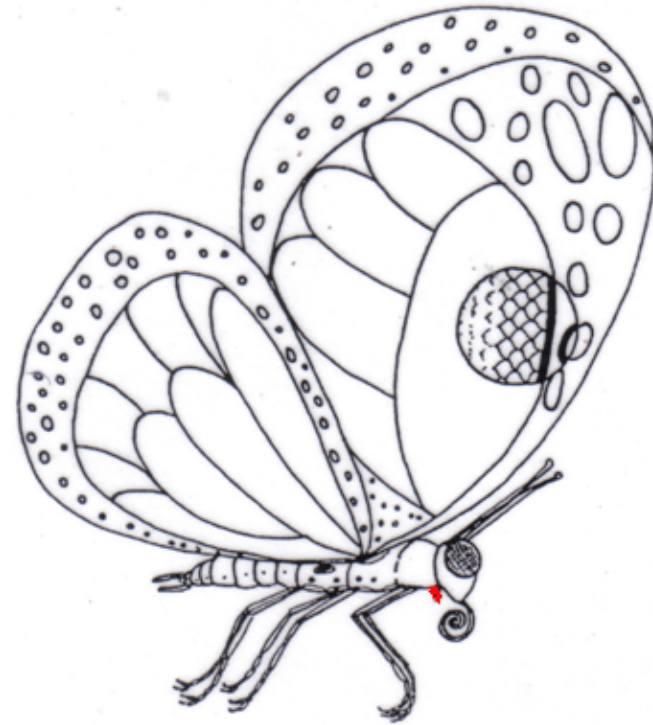
MontessoriHelper.com

Montessori Made Easy I





mouth



mouth



For More Quality Materials Like these VISIT...

MontessoriHelper.com

Montessori Made Easy I



This long, coiled tube-like tongue is used to suck nectar. It has evolved from mouth parts that used to chew.

mouth

This long, coiled tube-like tongue is used to suck nectar. It has evolved from mouth parts that used to chew.

mouth

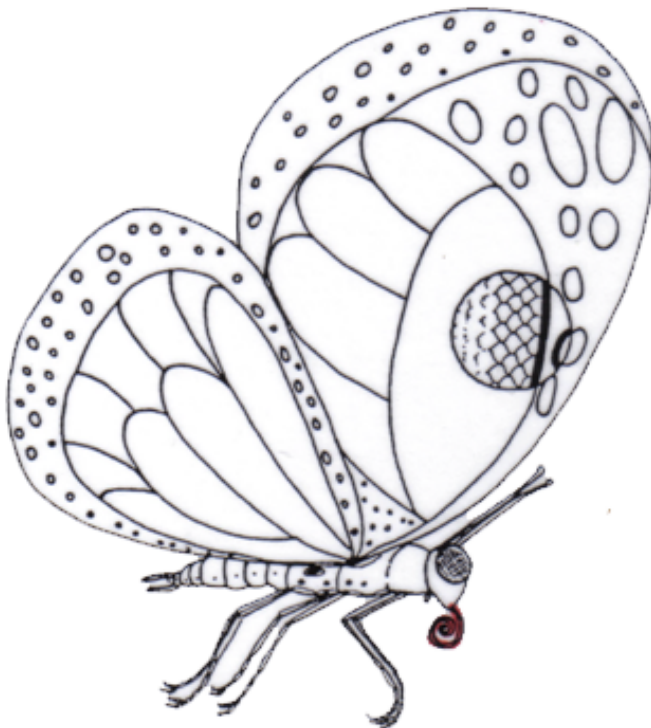


For More Quality Materials Like these VISIT...

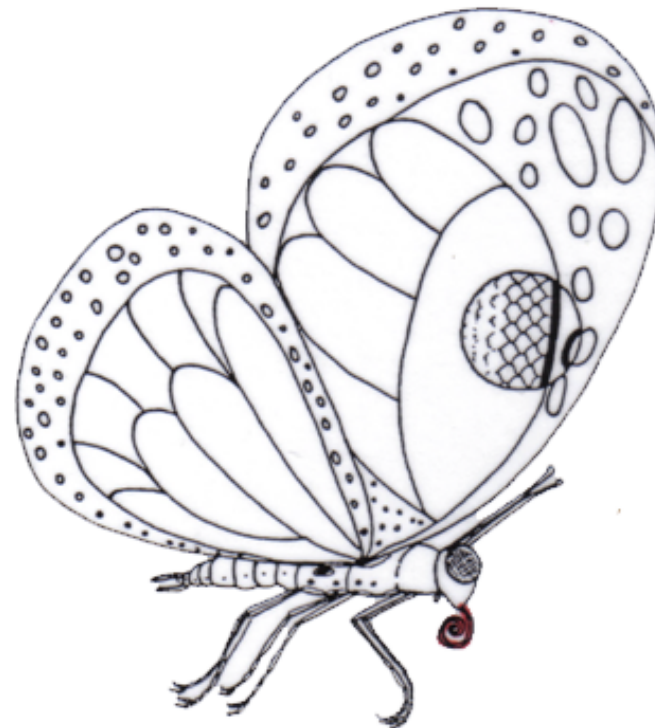
MontessoriHelper.com

Montessori Made Easy!





proboscis



proboscis



For More Quality Materials Like these VISIT...

MontessoriHelper.com

Montessori Made Easy I



This is comprised of two
pairs of sensory palpi and
a proboscis.

proboscis

This is comprised of two
pairs of sensory palpi and
a proboscis.

proboscis

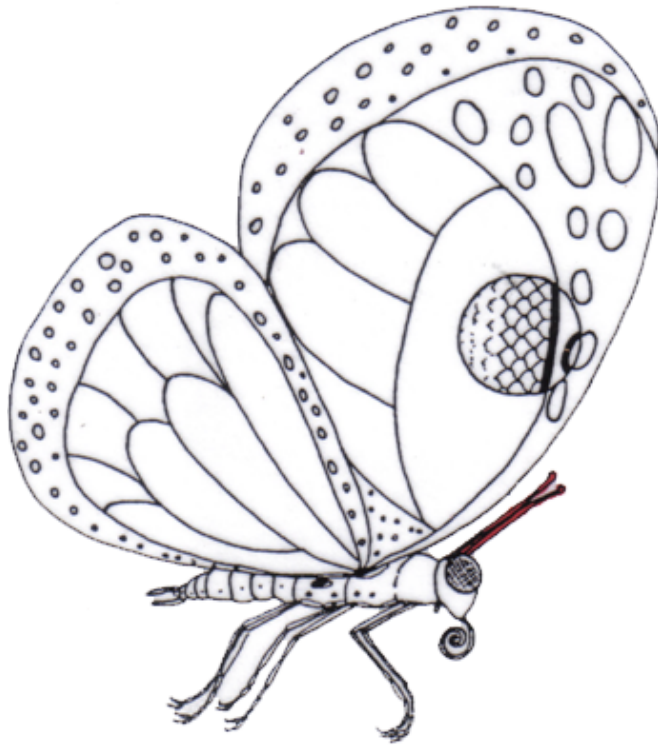


For More Quality Materials Like these VISIT...

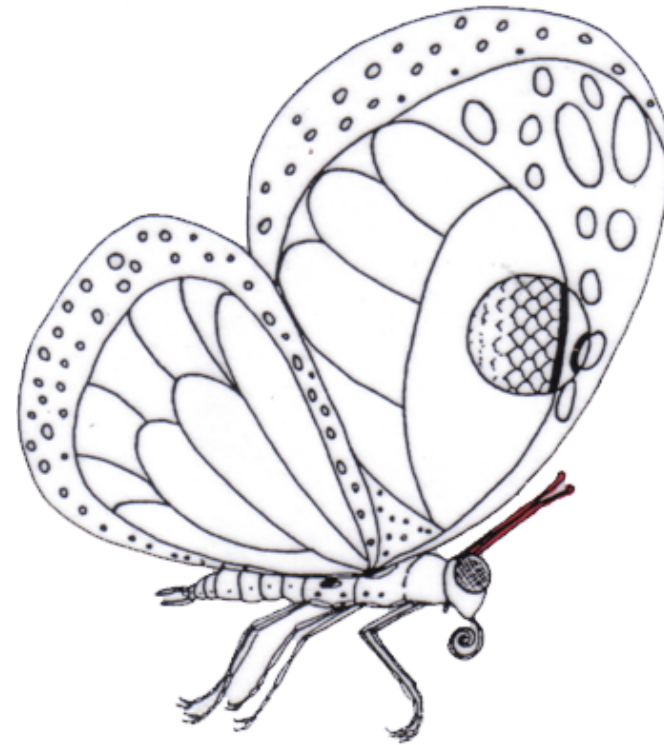
MontessoriHelper.com

Montessori Made Easy I





antennae



antennae



For More Quality Materials Like these VISIT...

MontessoriHelper.com

Montessori Made Easy I



These are segmented
smell and touch sensors
with knobs at the ends.
They can have from 7 –
1000 segments.

antennae

These are segmented
smell and touch sensors
with knobs at the ends.
They can have from 7 –
1000 segments.

antennae

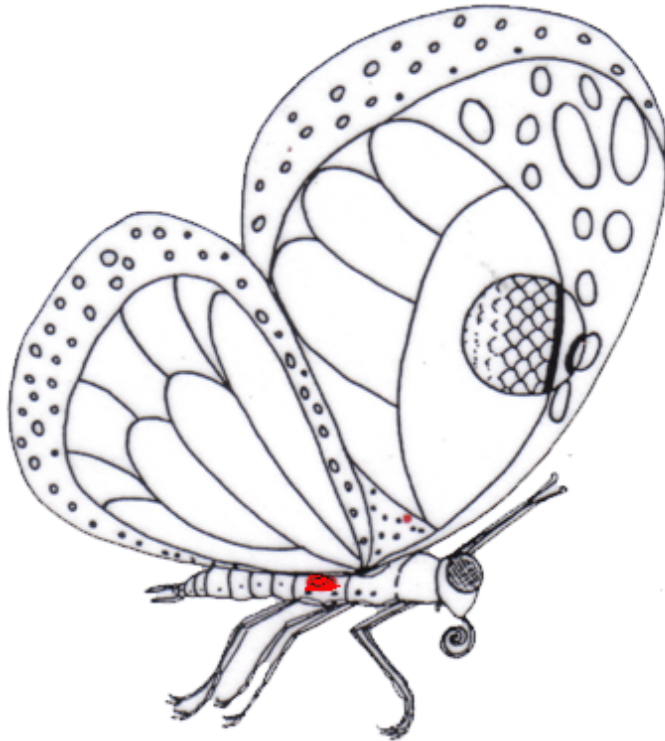


For More Quality Materials Like these VISIT...

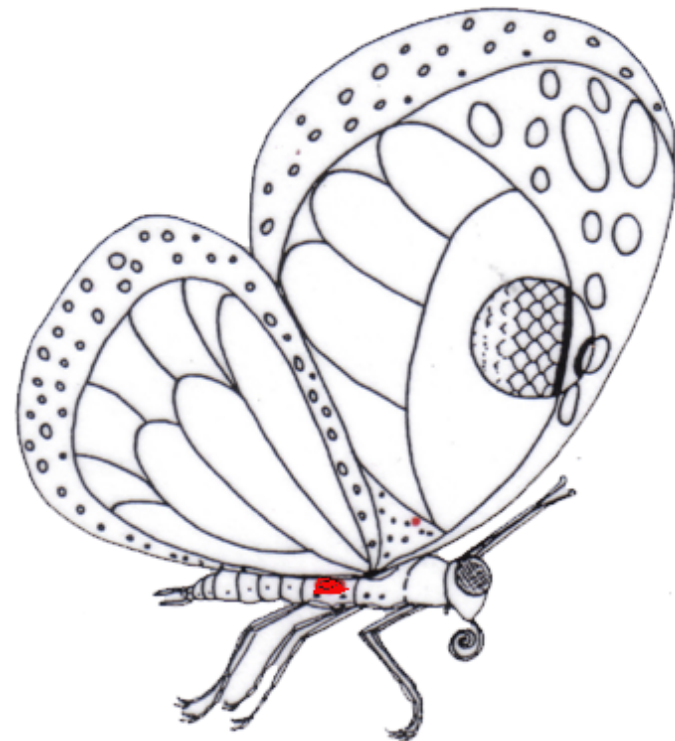
MontessoriHelper.com

Montessori Made Easy I





sound receptors



sound receptors



For More Quality Materials Like these VISIT...

MontessoriHelper.com

Montessori Made Easy I



These are tympanic
hearing receptors located
on the metathorax in
some butterflies.

sound receptors

These are tympanic
hearing receptors located
on the metathorax in
some butterflies.

sound receptors



For More Quality Materials Like these VISIT...

MontessoriHelper.com

Montessori Made Easy I

