

LCA Foundations of the Modern World Summer Assignment

Task

Students will think like archaeologists by working with pictorial and written information on the artifacts found with the “Iceman”, a 5,300-year-old mummy found in the Italian Alps in 1991. Using this evidence, students will develop inferences as to whom the Iceman was and what might have happened to him, and then write a “newspaper article” on their experiences with Iceman.

Process

Step 1- Examine the artifacts found below in Figures 7.1 to 7.5 and carefully read the captions.

(Color photos of these artifacts can also be found on page 4 of your textbook, *World History: Patterns of Interaction*

http://www.msturnbull.com/uploads/3/8/1/3/38134823/chapter_01_the_peopling_of_the_world.pdf)

Step 2- For each figure, answer the following: What can you infer about the life and death of the Iceman from this artifact? Explain the reasons for your inferences.

Step 3- Write a fictional newspaper article that explains who the Iceman was and what happened to him. Place yourself in the story, writing as if you were the one who discovered the Iceman or were a scientist examining the body and artifacts. Create the story by specifically looking at your inferences from the artifacts.

Step 4- Bring your completed article to the first day of class and be prepared to discuss your inferences.

Rubric

Your fictional newspaper article should meet the following standards:

Standard
Five Paragraphs
Effective sentence structure, word choice, tone, grammar, spelling, & punctuation
Introduction creatively places the student in the story and explains the findings
More than two artifacts are explained and inferences made about the Iceman’s life and death
Conclusion sums up and explains the student’s theory as to who the Iceman was and what happened to him.

Reminder

The purpose of this assignment is to prepare you for the first class by practicing historical thinking. Do not worry about getting the “right” answer, writing the “perfect” article, or getting a “good” grade. Try your best to follow the instructions while being free to add your individuality and creativity.

Figure 7.1

This is the Iceman. He was found up over 10,000 feet in the Italian Alps. Later study of him showed that his body had a number of compressed or broken ribs on the right side. Although scientists did not find any food in his stomach, they did find some food in the large intestines. His body contained grains of wheat and there was residue of copper in and on his hair. X-rays also showed what appeared to be a small object or bone in his back.

What can you infer about the life and death of the Iceman from the body? Explain the reasons for your inferences.



Figure 7.2.

This is a drawing of the Iceman's boots. Each boot consisted of an oval piece of leather with its edges turned up and bound with strong leather straps. The soles of the shoes were made with hide and were bound up with leather straps. Inner socks were made of knotted cord that formed nets to hold grass and weeds in place (for warmth). Grains of wheat were found on the boots.

What can you infer about the life and death of the Iceman from this artifact? Explain the reasons for your inferences.

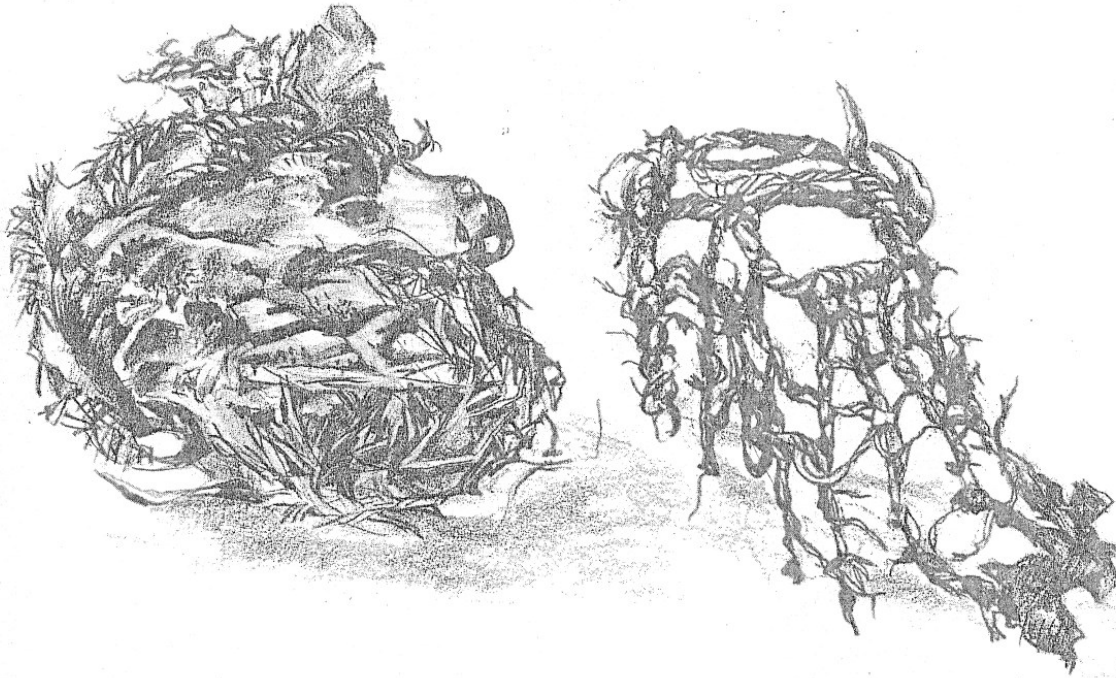




Figure 7.3

This is a drawing of the Iceman's ax. The handle was made of a very strong wood and the blade was made of copper. The copper had been melted and poured into a mold. There was "wheat sheen" on the blade which indicated that it must have been used to cut wheat.

The age of the ax was a matter of dispute for some time. Due to a rust color that made it appear to be iron, and the style of the blade, it was first thought the ax was several thousand years old. When testing showed that the blade was actually copper, the suspected age was pushed back further. Later carbon-dating tests of the Iceman's body revealed that he died over 5000 years ago and there was a new mystery. The Iceman would have lived during what is termed the "Stone Age" and would not have known the use of copper.

What can you infer about the life and death of the Iceman from this artifact? Explain the reasons for your inferences.

Figure 7.4

This is a drawing of the Iceman's fur quiver. Although most of the outwardly facing fur had disappeared by the time it was found, it was determined that the fur was probably that of a deer. The main part of the fur quiver was folded over and sewn together. The quiver contained fourteen arrows, but only two were finished. The supportive wood frame was broken into three pieces. The accompanying bow was not finished.

The finished arrows contained flint arrowheads, wooden shafts, and the feathers of a large brownish bird. The feathers were attached to the wood by means of birch tar and long strings made of sheep's wool.

What can you infer about the life and death of the Iceman from this artifact? Explain the reasons for your inferences.

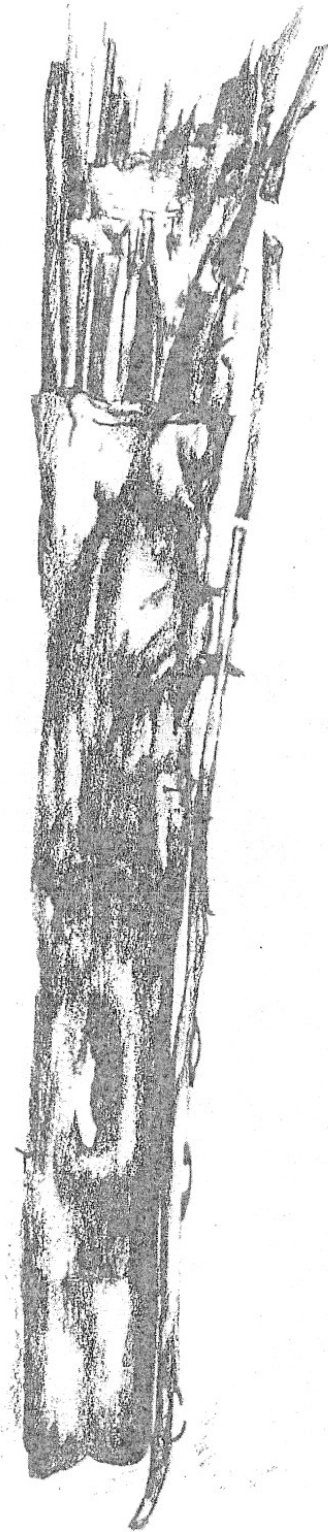


Figure 7.5

This is a drawing of the pouch found near the Iceman. Archaeologists had never before found such an artifact. In the pouch were several objects including a fungus ball that contained a bacteria killing fungus, three different sized pieces of flint, and a pencil-like splinter made from goat bone. There were also several "sloe berries" found in the pouch. These berries could have made a high carbohydrate snack, but would probably not have been picked until after the first frost (due to tartness).

What can you infer about the life and death of the Iceman from this artifact? Explain the reasons for your inferences.

