

ADDENDUM TWO

Project No.: 14-044

Date: October 30, 2015

Subject: **CHANGES to the BIDDING DOCUMENTS**

Project: **WINDOW REPLACEMENT FOR
KENNEDY MIDDLE SCHOOL
ROCKFORD PUBLIC SCHOOLS
ROCKFORD, ILLINOIS**

Bids Due: **2:00PM, WEDNESDAY, NOVEMBER 4, 2015**

From: **RICHARD L. JOHNSON ASSOCIATES, INC.
4703 CHARLES STREET
ROCKFORD, IL 61108**

To: **ALL PROJECT DOCUMENT HOLDERS**



Please reproduce this Addendum as needed, and attach to the Project Manuals for the above project.

Bidders shall indicate receipt of this and all Addenda in the space provided on the Bid Form. Failure to do so may be sufficient cause to reject the bid.

Sincerely,
RICHARD L. JOHNSON ASSOCIATES, INC.



Scott R. Johnson, AIA, LEED AP

This Addendum consists of:
Pages 1 thru 2
8 1/2 x 11 Addendum Drawing ADA2.1

NOTE: Wherein this Addendum conflicts with the original Project Manual and Drawings, this Addendum shall govern.

CHANGES to the PROJECT MANUAL

1. GENERAL ITEMS

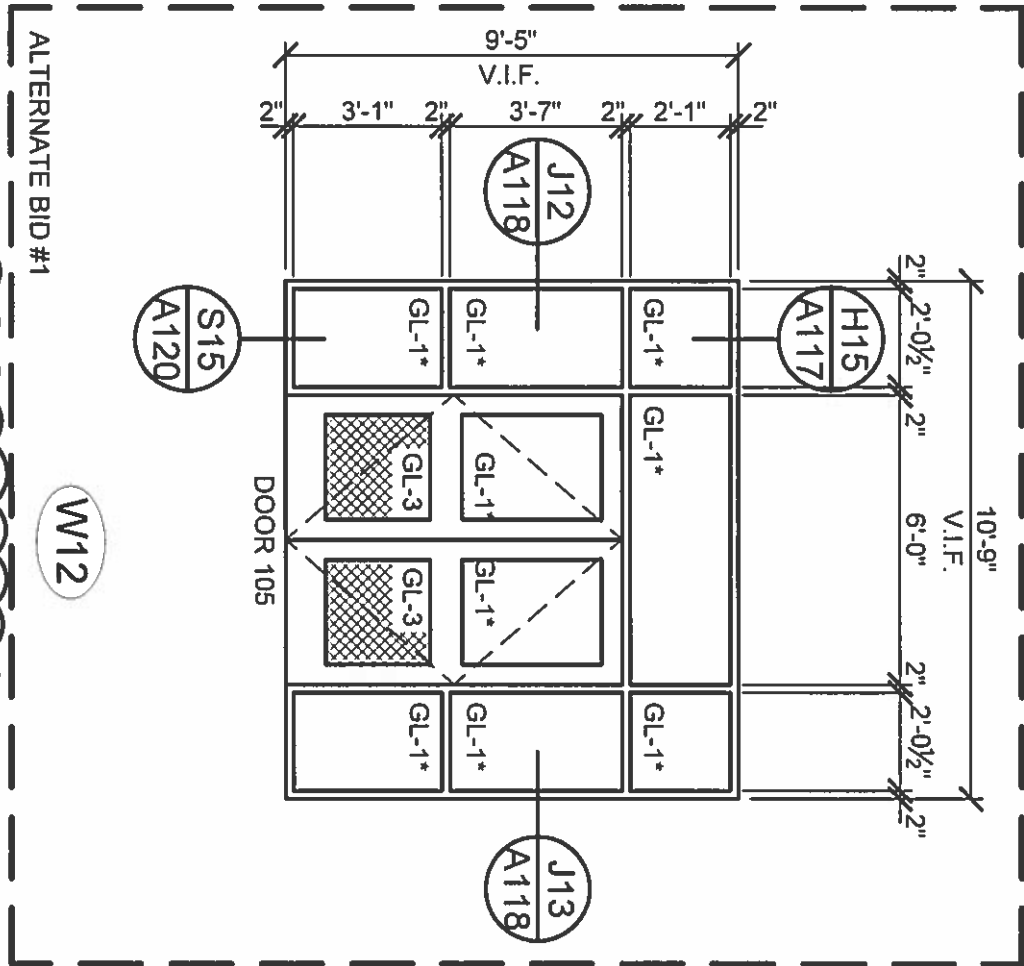
- 1.1. No school activities will take place in the building over the summer.
- 1.2. Contractor to modify existing head conditions as shown on the details. If determined that some head conditions contain asbestos, then a credit will be determined at a later date to remove this demolition from the Contractor's scope of work.
- 1.3. Rockford Public Schools will not give out the projected budget for the project.

CHANGES to the DRAWINGS

2. DRAWING A111

- 2.1. See attached addendum drawing ADA2.1 showing frame type W12. All glazing in the doors, sidelights and transom shall be changed to a GL-1* glass type. GL-1* glass type shall be the same as GL-1 except tempered shall be replaced with laminated.

END ADDENDUM NUMBER 2



(REFERENCE SHEET A111)

NOTE:
 ORIGINAL DRAWINGS SHALL
 REMAIN IN FORCE EXCEPT FOR
 CHANGES HERE-IN NOTED

WINDOW REPLACEMENT AT KENNEDY MIDDLE SCHOOL
 ROCKFORD PUBLIC SCHOOL DISTRICT 205
 501 SEVENTH STREET
 ROCKFORD, ILLINOIS 61104



Richard L. Johnson Associates, Inc.
 architects • interior designers
 4703 Charles Street; Rockford, IL 61108
 815/398-1231 815/398-1280 Fax
 www.rljarch.com

JOB NO. 14-044

ADDENDUM DWG.

DATE: October 30, 2015

ADA2.1