

Guide for Parents

Monday, 18th May 2020.

The school will be open for face-to-face teaching for **Secondary School students only**. As we are a British School this **includes Year 7 classes**. **Year 7 – Year 10** are welcomed back on this day and all lessons will be held in accordance with the timetable.

Year 13 - Subject teachers will contact students individually with regards to students attending classes to finalise the submission of assessment for all A2 courses.

Year 12 - The AS courses are now complete and all work has been submitted to the class teacher for the initial internal assessment. Once this is completed all the details will be sent to the relevant examination boards for grading.

In normal circumstances the Year 12 students would be sitting their AS exams at this time. As this is no longer the case students that are progressing to A2 will have started their courses.

For the current Year 12, A2 courses will continue online for the rest of the school year

Year 11 - The IGCSE courses are now complete and all work has been submitted to the class teacher for the initial internal assessment. Once this is completed all the details will be sent to the relevant examination boards for grading.

Again, in normal circumstances the Year 11 students would be sitting their IGCSE exams at this time. As this is no longer the case students that are progressing to A-Level, starting in September, will begin specially prepared 'Head Start to A-Level' lessons.

For the current year 11, our 'Head Start to A-Level' courses will continue online

Note on exam fees: Please be aware that the exam fees are not set by us as an institution, they are set by the exam boards. If you wish for your child to be entered for a qualification, then there will be a charged levied by the exam board. Even in the absence of a physical exam the exam boards still charge a fee for the administration of the qualifications.

Primary School

Continuation of our online programme of 'Byron Live'

Combination of Face-to-Face & Online Learning

Throughout this time, we have continually stated that no child will be penalized or left behind as a result of the situation we face. This still stands. If a student is unable to attend school once it is reopened, they will not be marked as absent and we will facilitate their remote learning in every way possible. In the Secondary School all classes will be linked into Microsoft Teams so that students can access them remotely in the same way as they have been doing during the closure.

Further Information

Primary School Return

The Government will continually assess the effects of the removal of the lockdown measures and will make further announcements with regards to the re-introduction of the Primary School Students. There is a date of **Monday 1st June 2020** penciled in for the potential return of our Primary School students.

Please note that **this is not a definite date** and further announcements will be made by the Government and the Ministry of Education in this regard.

Social Distancing, Hygiene & Operational Measures

Class Sizes

The maximum class size will be 15 students with a minimum distance of 1.5 meters between students. In the majority of our classes we will have less than 15 students ensuring that we are allowing the regulations. Where classes are over 15 students the class has been split as necessary.

In the Primary School when pupils return for face-to face teaching any class that is over 15 students will be split and fully catered for through a reorganised timetable and the use of designated outdoor spaces that will be utilised as classrooms.

There will be no gatherings such as assemblies, awards ceremonies etc. In addition, there will be no inter-school events, tournaments, sports fixtures, or school trips until further notice.

The School Day

Until further notice the school day will operate as follows:

Arrival	8.45am – 8.55am
Lesson 1	9.00am – 9.45am
Lesson 2	9.45am – 10.30am
Lesson 3	10.30am – 11.15am
Break	11.15am – 11.40am
Lesson 4	11.40am – 12.25pm
Lesson 5	12.25pm – 1.10pm
Lunch Break	1.10pm – 1.30pm
Lesson 6	1.30pm – 2.15pm
Lesson 7	2.15pm – 3.00pm
Departure	3.00pm

Students should arrive between **8.45am and 8.55am** and go straight to their first class. There will not be any Form Period at the start of the day. Enrichment activities, including additional EAL classes will be suspended until further notice. The first lesson on Monday 18th May 2020 when we return will be PSHRE and will be dedicated to Health, Hygiene and other Covid-19 related matters as directed by the Government and the Ministry of Education.

Other requirements

1. No lining up outside classrooms
2. Students to enter classrooms when they arrive & sit in the furthest seat available
3. Classrooms have been grouped into 4 to limit the movement of students
4. These classrooms will only be used by each specific year group
5. Where there is a class of over 15 students, the class has been as follows:

7a	B1 B2
7b	B3 B4
8a	B5 B6
8b	B9 (Art Room) B10
9a	B19 B20
9b	Hall A18
Year 10	B11 Chemistry Lab Physics Lab B14 B15/16 B17/18

Please note that year groups will be split according to Surname. Please see the timetable.

Timetable - A new timetable has been developed for all students from Year 7 – 10. They will still receive the same number of lessons for each subject but rather than students move from class to class as usual they will remain in the same block and the teacher will go to the students.

STAFFING - Parents are asked to be mindful that many of our staff are parents as well. Considering this some staff will need to continue to work remotely due to their own children being at home. In instances such as this the students will access the lessons via the remote platforms that are in place. For the students at school this will be facilitated by another member of staff.

The same will apply if a member of staff is not able to attend the school physically due to being in a vulnerable group or being in daily contact with any such person etc.

Moving Around the School

Drop Off

Parents should drop their students off and depart. At this time, we are not permitted to allow parents on to site during the school operational hours (7.55am – 3.15pm). Parents are able to arrange a visit outside of these times.

At the beginning of the day students should go immediately to their classroom and take an unoccupied seat that is the furthest away. Classrooms are allocated as follows:

Break & Lunch Time Protocol

- When the bell rings for break and lunchtime, as well as the end of the day, students should remain seated and only move following their teachers' directions
- Teachers will supervise the student's dismissal at all times reminding students of the social distancing protocols
- Class dismissal will be staggered to prevent all students leaving at the same time
- Both break and lunch time will be supervised by staff throughout

Allocated areas for students during break and lunchtime:

Year 7	Volleyball court area
Year 8	Front area of main building
Year 9	Basketball court and area from changing rooms to EYFS playground
Year 10	Sheltered area in front of canteen and area in front of the security office

End of the Day

- Students who **do not** use the school bus will be dismissed **first** when the bell rings
- Parents who are collecting their children should wait outside of the school gates, observing the social distancing recommendations
- Parents and students should depart immediately
- All students using **school bus** will **remain** seated and stay in their classroom
- Buses will be boarded one by one and there will be no waiting by the volleyball court as is the usual protocol
- PA Announcements will inform the students when it is time to leave the classroom to board their bus
- When their bus is called the students should go straight to the 2nd entrance (beside the PE office), where their bus monitor will be waiting
- Teachers will remain in the classroom to monitor until the last student has boarded their bus
- All staff will monitor and remind students of the social distancing protocols and the safe distance of 1.5 m.

General Movement

Each year group will move around the school via set routes which are outlined below and highlighted on the following floor plans:

Year 7	Yellow Route	Will use the stairs above the IT Management office to enter and leave their classrooms
Year 8	Red Route	Will use the indoor stairs from the main entrance of the building to enter and exit their classrooms
Year 9	Blue Route	Will walk around the volleyball and basketball court at the back of the main building to enter and leave their classrooms
Year 10	Green Route	Will use the stairs above the canteen to enter and leave their classrooms.

- Students should note that the sports pitch will not be used during breaks and lunchtimes.
- Additional shading is being brought in for the allocated areas.
- The lockers and corridors as well as the balconies are not be used by students during breaks and lunchtimes.

Primary School Break & Lunch Time

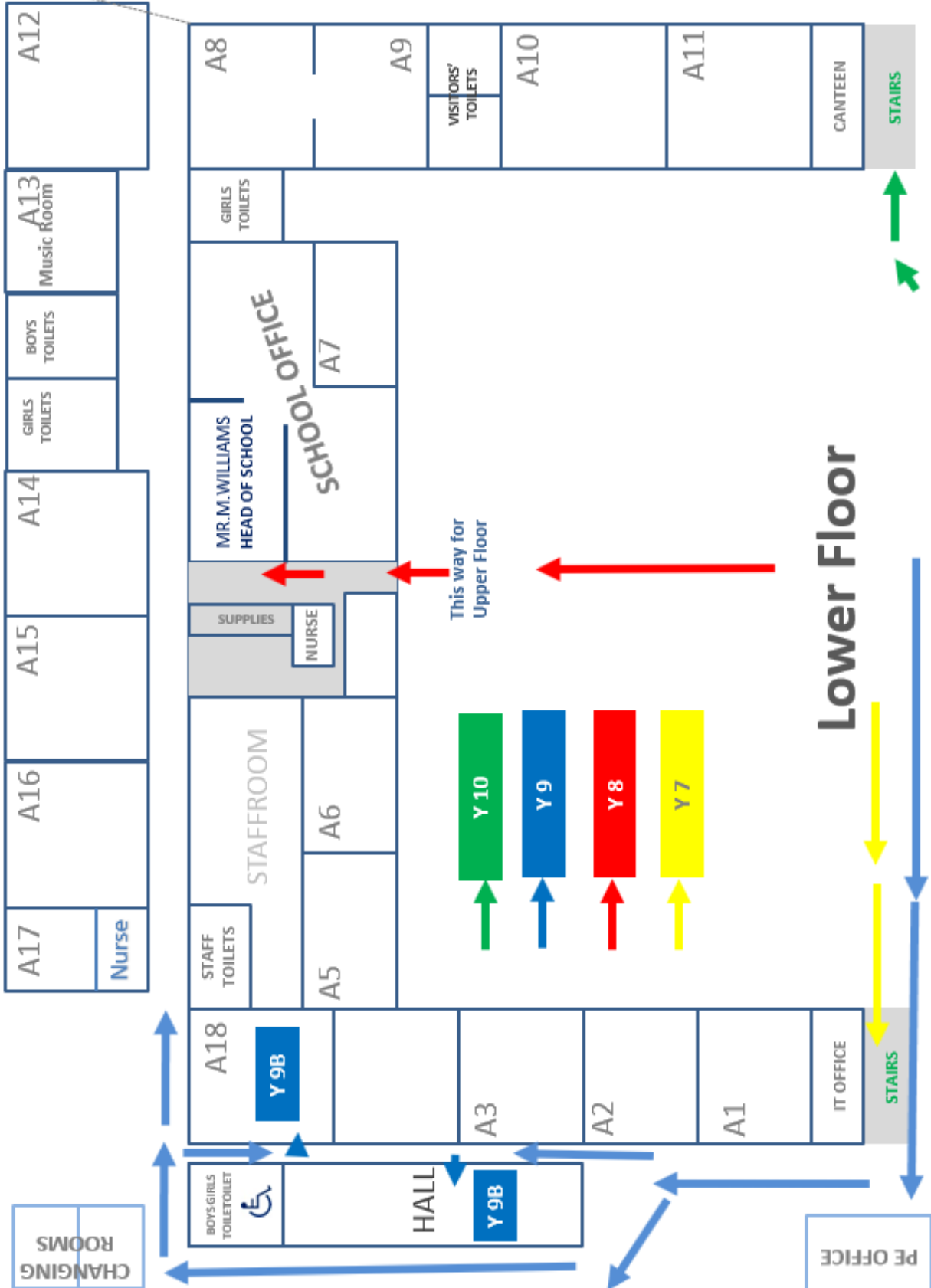
When the Primary School return, breaks will be operated on a staggered timetable enabling pupils to access the playground facilities, under supervision, within the prescribed limits set out by the Ministry.

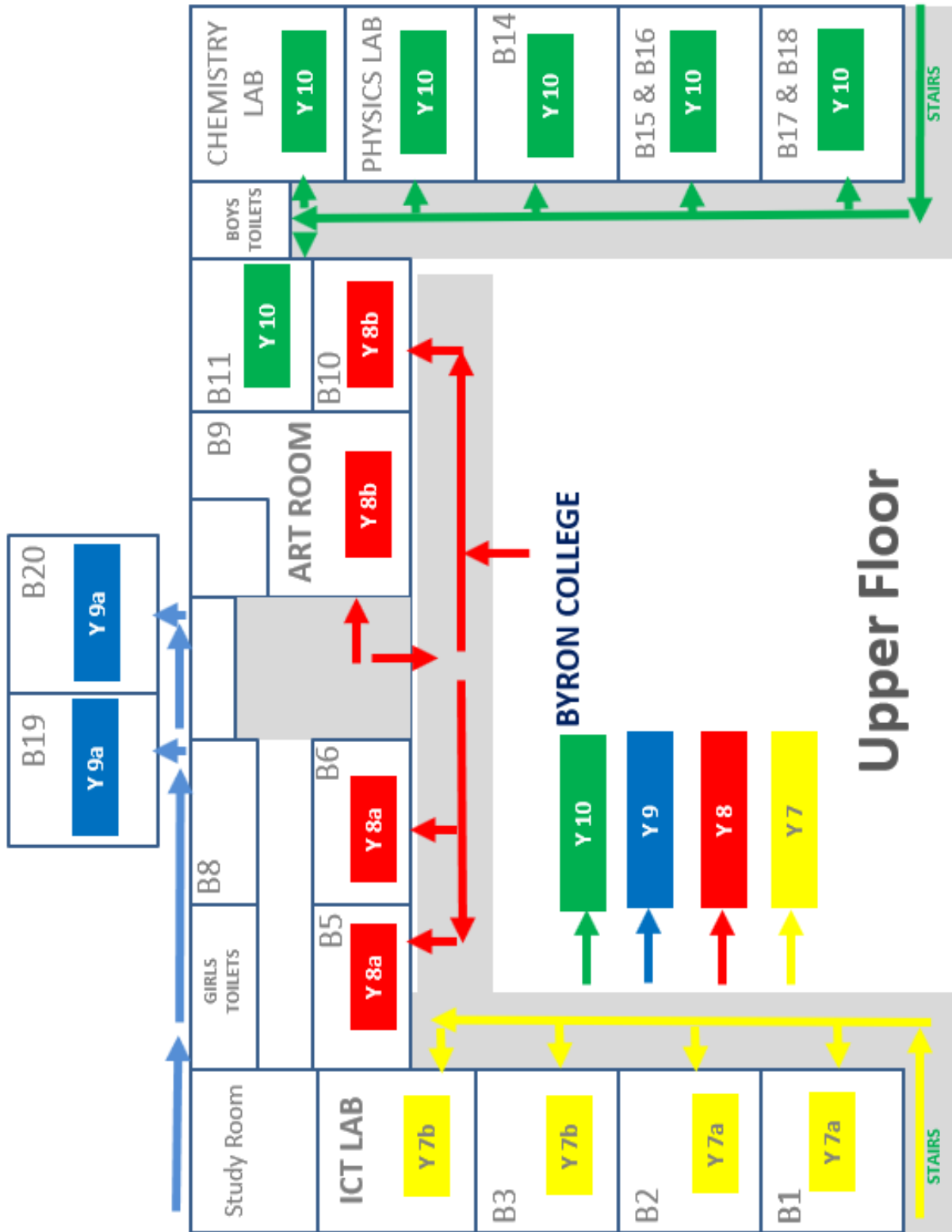
Canteen

IMPORTANT

It is important to note that the School Canteen will be closed until further notice. This means that you must send your child to school with and appropriate lunch, any necessary snacks and drinks for the day.

BYRON COLLEGE





PE Classes

All PE classes will be fitness based and non-contact and will not include swimming this term. Again, the maximum number of 15 students will be observed and classes will be split accordingly.

PE Changing

The PE Changing Rooms will not be accessible until further notice. On days when students have PE, they should come dressed in their PE kit which they will remain in for the day.

Protocol for PE

- PE teachers will collect their students outside of their classroom and lead them to the designated area (sports pitch, volleyball, or basketball court).
- Students will be required to keep the appropriate distance while moving to their PE class.
- The PE staff will use markers to identify the areas where each student should stand during the lesson to ensure minimum distance of 1.5 m is maintained.
- When breaks or rest periods are required specific areas will be designated with students again keeping their distance.
- The lessons will involve fitness training and training methods
- There will be no contact sports or sports that involve shared equipment such as football, basketball, and volleyball etc.
- There will be no use of shared apparatus. If individual apparatus is used, it will be cleaned after the lesson.
- For students that are being taught remotely it is not possible to live stream the lesson, However, the PE Staff will ensure PE based tasks are available on SharePoint.

Art Classes

This term all Art classes will be based on colour theory, art history, critical understanding and drawing.

Art Room Access and Storage

The Art Room (B9) will not be accessible for materials, equipment or for storing artwork. On days when students have Art, they should come to the lesson equipped with their art sketchbook and their own art materials which were outlined at the beginning of the year. This has been routine for all art classes this year and so students are aware of the process. Students are responsible for looking after their art sketchbook and materials and they should take them home at the end of the day.

Protocol for Art Classes

- Students will remain in their classroom and required to keep their distance (1.5m minimum) from others while moving in the room.
- There will be a seating plan for every class to ensure minimum distance of 1.5 m is maintained.
- Every student must bring his/her art sketchbook to every art lesson.

- The art lessons will involve drawing from secondary sources, colouring in with coloured pencils and pastels, collage, use of ICT when possible, art history and colour theory.
- There will be no group work, nor pair work.
- There will be no use of shared materials and equipment during the lesson. All students must bring their own art bag with a pencil case, a 2B pencil, an eraser, a sharpener, a ruler, a geometry set, a pair of scissors, a glue stick, colouring pencils, and oil-pastels.
- For students that are being taught remotely, all tasks will be posted on Microsoft Teams and also on SharePoint.

Music & Drama

Due to the restrictions on physical contact and the use of equipment all music and drama classes will be taught in the regular classroom as opposed to in specialist spaces. These lessons will follow the same format as they do currently online.

School Uniform

A pragmatic approach to school uniform is required at this time due to the special circumstances that we face. In normal circumstances we would be operating our 'Summer Uniform' policy but we are aware of the current limitations.

We would like to maintain the standards of dress that we are particularly proud of at Byron College and students are still required to wear their uniform or School PE Kit when appropriate. For all students, we are happy for them to wear any combination of either the winter or summer uniform. In all instances, the school tie and blazer are not required for this summer term.

Please note: Our uniform providers, AB Creations and Marks & Spencer are still available for purchases.

Cleaning & Hygiene

There will be continual cleaning and disinfecting of the school site throughout the school day as well as before and after school as is standard.

As was previously provided, alcohol rub will be available throughout the school and students are required to wash their hands and use alcohol rub before each lesson. Students are also encouraged to bring their own products and maintain good health and hygiene habits throughout the day.

Physical Contact

Physical contact, including hand shaking, is not permitted on the school site or on any of our transport services. This will be closely monitored at all times by staff.

Face Masks

The Ministry for Education have informed us that it is not mandatory for students or staff to wear a face mask whilst they are at school. However, due to the generosity of the Chinese Embassy and Ms. Kayakoparan and family who have donated 3000 face masks in total, they are available at the school for anyone who wishes to wear one. These will be available at the school gate at the start of the day, and from the school nurse.

Water Fountains

Students are not permitted to drink directly from the water fountains, and this will be monitored by staff. Students are required to bring adequate water with them as well as a refillable water bottle.

Air-Conditioning

Although the Ministry for Education have not informed us that we must not use air conditioning in the classroom it is advised that this should be kept to a minimum. We therefore will not be operating our AC units as much as is practically possible and utilizing them as fans with the windows and doors open. Classrooms will be aired throughout the day and all windows and doors will remain open whenever the weather permits.

Transport

All buses will operate at 50% capacity. We will endeavor to do our best to cater for everyone's requirements at this time. If you wish to temporarily opt out of the transport services, please contact the school office as necessary. Transportation costs will not be charged for the period of closure from March 11th onwards or if you opt out.

Visitors

As previously during our pre-closure measures only essential visitors will be permitted on site. All non-essential visits, including visitors related to admissions etc. will continue be suspended until further notice.

Parents as visitors – we always encourage our parents to visit us throughout the day as this is very much part of our community ethos. At this time if you need to visit the school please make an appointment with the office. Visits will only be permissible from:

7.30am – 8.00am

3.15pm – 5.00pm

Covid19 Testing

At present there is no provision set out by the Government for Covid19 testing for students and staff returning to school. As previously, we are all relying on each other in this situation to apply a degree of etiquette and common sense.

Any student that is unwell at school, or shows any signs of illness will be QUARANTINED and will be collected immediately by their parents

All parents are INSTRUCTED not to send their children to school if they have traveled during the past 14 days

All parents are INSTRUCTED not to send their children to school if they have been exposed to someone who has traveled during the past 14 days

Anyone experiencing symptoms, even if mild, in the last 14 days, is INSTRUCTED to stay at home and to contact your medical practitioner

All students who have been absent from school due to illness REQUIRE a doctor's note of clearance before being re-admitted to daily school

No student will be marked absent or penalized for justified absence

Visiting the School Nurse

If a student feels unwell whilst they are at school their teacher will allow them to visit the nurse's office. It is important that they adhere to the following:

1. They go alone (not accompanied by classmate). This applies at break and lunch time as well.
2. Students wait outside the Nurse's Office – there will be an appropriately distanced waiting area.
3. Students should wait to be called by the Nurse.
4. When students enter, they should sit on the chair by the door unless otherwise instructed.
5. The nurse will wear the necessary protective clothing and equipment to examine students.
6. If the student is showing any symptoms of illness, they will be given a mask, and transferred to the allocated quarantine room.
7. Parents will be informed and requested to collect their child.
8. Students will be required to wear a mask until they are collected and will be monitored by the nurse will monitor the student while he is waiting for his parents.
9. When the student leaves the nurses room and the quarantine room these areas will be cleaned including with alcohol lotion. The doors and windows will be open at all times.
10. All students that are sent home from school may only return once they have a medical certificate and clearance from a medical practitioner.

The school nurse will be conducting class briefings with regards to health and hygiene as well as taking temperatures. Students will not have their temperature at the gate on arrival to firstly avoid queuing and secondly it may provide an inaccurate reading.

The first lesson on Monday 18th May 2020 when we return will be dedicated to Health, Hygiene and other Covid-19 related matters as instructed by the Government.

Parent Teacher Meetings

Before the end of the school year we will be arranging a series of virtual parent teacher meetings so that you can consult with your child's subject teachers with regards to progress etc.

Office Opening

The school office will be open to handle all enquiries as it has done throughout the past closure. Please continue to contact us as we are happy to hear from you and wish to continually assist you whenever we can. Please feel free to telephone during our office hours:

Office Opening Hours: 7.30am – 5.00pm (Monday to Friday)

Extending the School Year

The Government are proposing that the school year is extended for all Greek Schools. However, this proposal does not correspond to us as a British School.

We are extremely proud of how we have reacted to this crisis and how, with your support and assistance, we have utilized our system of online learning. However, we are aware of the disruption to the regular rhythm of school life and, therefore, we are proposing to finish the school year as follows:

Secondary School

The school year will finish as published on **Friday 19th June 2020**.

Primary School

We are proposing to finish the school year on **Friday 3rd July 2020** for all of our primary students. This requires approval from the Ministry of Education and is initially on the proviso that the Government and the Ministry of Education confirm the reopening of all Primary Schools.

2020 – 2021 Academic Year

Although not confirmed, at present the Government are looking at the possibility of starting the next school year on **1st September 2020**. As and when this is confirmed we will inform you accordingly.

Educational Gaps

Although the closure has seemed a significant duration our teachers are prepared to ensure that any gaps in the education of your children will be covered. This, combined with the continuation of our education provision online, means that we remain in a very good position going forward.

No student will be penalised as a result of this situation

2020-2021 Academic Year

As we are a British International School, and we follow the British Curriculum, we are required to adhere to certain policies and procedures aside from those set down by the Greek Ministry for Education. As a result of this unforeseen closure we have implemented a system of online learning so that we can continue with the current academic year. Even if this system were required up until the summer it does mean that all students will complete the present year.

All students that are accepted by the school and fully reregistered for the 2020 – 2021 academic year will move to the next school year/grade in September 2020

Registration for the 2020-2021 Academic Year

In these unprecedented and difficult times, it is hard to focus on the future, nevertheless we must. We are continuing to plan for the 2020-2021 academic year which starts this September. It is important to note that our enquiries and new registrations are proceeding at a considerable rate despite the current circumstances.

As we have such a high demand for places from new students this creates a real dilemma as we need to ensure that the classes are running at their optimum number come September. It is, therefore, extremely important that, if you have not done so already, you inform us of your intentions for the next academic year.

Most of our classes and year groups are now oversubscribed, so it is imperative that you inform us **immediately as the deadline has now passed.**

We appreciate that all of us are experiencing a temporary change in our financial situation and it is our sincere hope that these worrying times will not have an impact on our students' future education. As a school we will do all that we can to assist in this regard.

Sports Day, School Production, Culture Day & End of Year Awards Ceremony

The summer term is traditionally a time when we celebrate, in many different ways, as a community. Due to these unforeseen circumstances it is not now possible to hold all these events as planned, however, we will be holding a celebration of everything we are so proud of at Byron, including our 'Great Exhibition' of your children's work as soon as restrictions are fully lifted. **Watch this space.**

School Fees

Many individuals and companies are confronted with uncertain times at present and will continue to do so in the coming months. Until such time as we return to normal operation it is impossible to calculate how the school's overall financial position will have been affected and therefore how we may be able to provide any support to those families who will be suffering more than most due to the economic impact of the coronavirus crisis. Schools around the globe are adopting a variety of approaches to this dependent on their particular context. We, at Byron College, are no different and we can confirm the following at this time:

- There will be **no increase** in school fees for the academic year 2020 – 2021. Given increasing resource prices over the last year, this will affect adversely the school's operating costs in the forthcoming year.
- **No fees** will be charged for Enrichment Activities after 10th March 2020, for the period of closure
- **No fees** will be charged for Transport Services after 10th March 2020, for the period of closure

This ongoing uncertainty does require patience and, therefore, further mindfulness of the schools' financial position given that we continue to pay the salaries of all our teaching staff in order for them to deliver the remote learning programmes across the whole school is needed. One of the strengths of the Byron College community is how everyone is pulling together to maintain routine amidst an incredibly difficult time for us all. We really do appreciate the numerous messages of support and thanks that we continue to get from our families.

Important Contacts

As always please continue to contact us directly to discuss any concerns you may have. We welcome your correspondence whether it be via email or over the telephone during office hours.

Any General Concerns:
m.williams@byroncollege.gr

Mr. Williams – Headteacher

Registration/Community:
e.dodds@byroncollege.gr

Ms. Dodds – Assistant Head (Admissions & Community)

Primary School:
j.gallagher@byroncollege.gr

Mr. Gallagher – Assistant Head (Primary)

Academic:
c.dedousis@byroncollege.gr

Mr. Dedousis – Assistant Head (Academic)

Pastoral or Safeguarding:
p.kostopoulos@byroncollege.gr

Mr. Kostopoulos – Assistant Head (Pastoral)

SEN:
n.marapa@byroncollege.gr

Ms. Marapa – SEN Coordinator/Educational Psychologist



FOR Students

Do Not Forget!

Protect yourself and your school

- Cough or sneeze in your elbow or a tissue, which you should dispose immediately.
- Do not put your hands on your face, mouth, nose or eyes.
- Often wash your hands with soap and water for minimum 20 seconds, **especially before eating and after the use of toilet**. If there is no soap and water you can use hand sanitiser.
- Do not share items (e.g. pen, pencil, rubber, mobile phone, money etc) with your classmates.
- Keep 1.5 m distance with your classmates in the class and all other school areas as well as with your friends out of school.
- In case you have symptoms of fever, cough or difficulty in breathing, inform your parents/guardians, or your teachers and stay home until you totally recover.

For further information, support or intervention contact:

EODY (Greek National Public Health Organisation):

For medical support and intervention: 210 5212054

210 5212056

2105212058

For psychological support and intervention: 215 215 6060



FOR PARENTS AND GUARDIANS

Do Not Forget!

Protect your child, your family and your school

Encourage children to follow the guidelines from EODY (Greek National Public Health Organisation) which are posted at school and apply to all measures of hygiene:

- Avoid close contact with individuals who show signs of Covid-19 symptoms and keep distance from older or vulnerable family members.
- Cough or sneeze into your elbow or a tissue which will immediately dispose.
- Wash your hands with soap and water for a minimum of 20 seconds, especially before eating or after using the toilet.
- Keep your children at home if they feel sick, communicate with your doctor and inform the school.
- Discourage children to gather in crowded indoor areas.

For further information, support or intervention contact:

EODY (Greek National Public Health Organisation):

For medical support and intervention: 210 521 2054 / 210 521 2058/ 215 215 6060

For psychological support and intervention: 215 215 6060



FOR TEACHERS

Do Not Forget!

Protect yourselves and your students

- Inform students to stay at home if they feel sick.
- Educate students to wash their hands with soap and water for minimum 20 seconds or disinfect with hand sanitiser after every break and especially before eating and after the use of the toilet.
- Encourage students to participate good hygiene practices such as cleaning surfaces and personal items (e.g. bags, books, pens etc.)
- Inform children of how important it is not to share items between each other (e.g. pens, books, mobile phones, money, headsets etc.)
- Monitor the number of students that are absent daily and inform admin if you see the number of absentees is increasing.
- Spend time to inform your students about the virus and also encourage them to discuss their worries in regard to the corona virus.

For further information, support or intervention contact:

EODY (Greek National Public Health Organisation):

For medical support and intervention: 210 521 2054 / 210 521 2058/ 215 215 6060

For psychological support and intervention: 215 215 6060



How should I talk to teenagers about COVID-19

Tips for parents and teachers

- Stay calm and reassuring towards children, acting as a role model for them.
- Listen and discuss with them, encouraging them to share with you their thoughts and feelings, both pleasant and unpleasant.
- Inform children about the virus in an accurate and honest way, taking into account their age and perceptual ability. Hiding the truth and facts can create confusion and uncertainty to children.
- Encourage teenagers to research for news and information about the virus and discuss with them this information, helping them to develop a critical look toward information. ***However, discourage any extreme exposure to this information as this may lead to increasing stress and fear.***
- Create a safe environment by constantly reminding them of the precautions of COVID-19 and assuring them that all possible measures are being taken to safeguard public health by the scientific community and the state.
- Avoid attributing blame and negative criticism towards a person who has been ill and explain why the person themselves is not responsible, avoiding the occurrence of stigmatisation and school bullying.
- Encourage frequent participation of teenagers in activities that relaxes them.

For further information, support or intervention contact:

EODY (Greek National Public Health Organisation):

For medical support and intervention: 210 521 2054 / 210 521 2058/ 215 215 6060

For psychological support and intervention: 215 215 6060

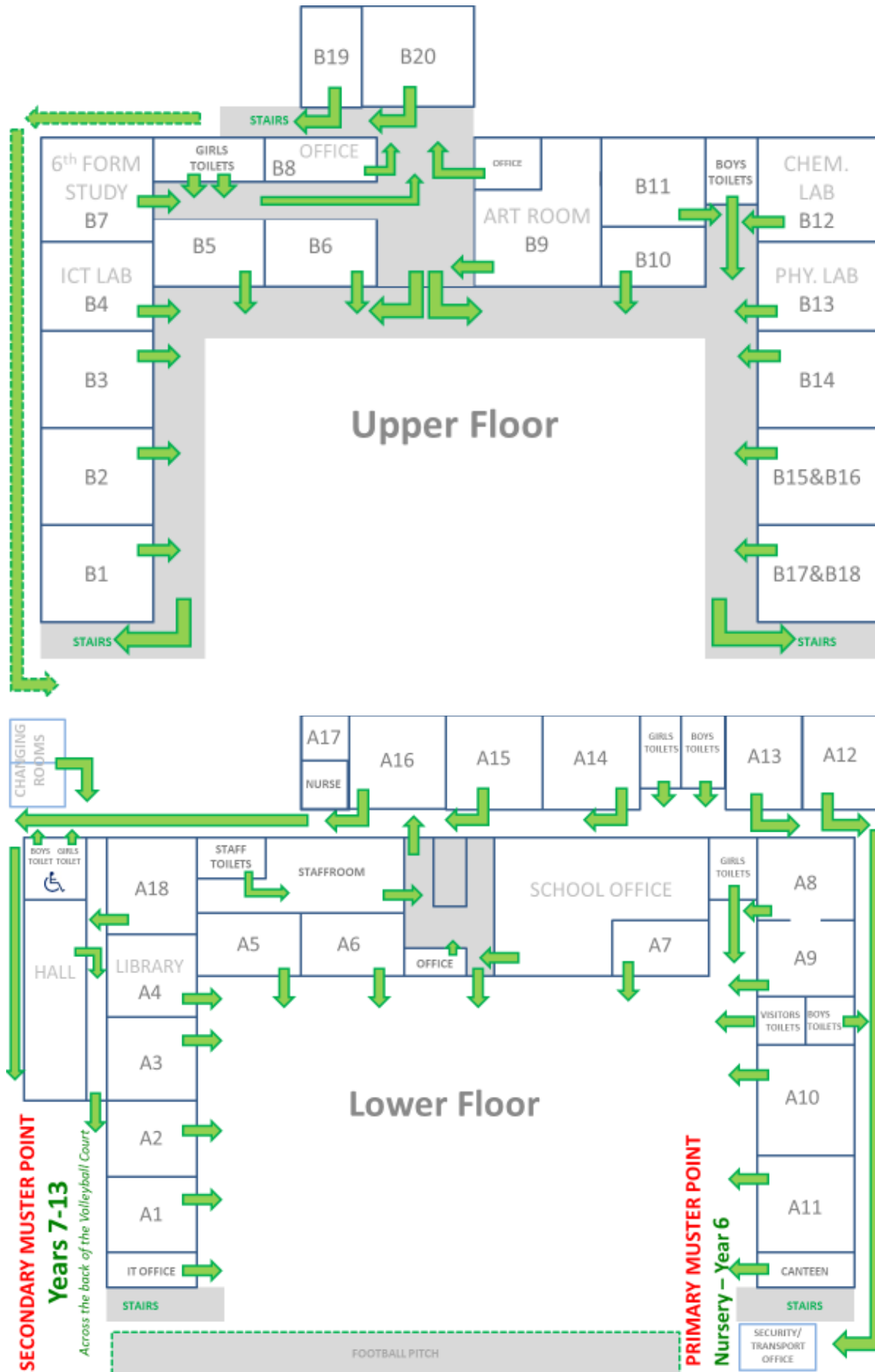
Emergency Evacuation Procedure – Covid-19 Update



In the event of the evacuation, the following procedures MUST be adhered to:

1. On hearing the alarm (siren) **ALL** pupils should be instructed to quickly, vacate the classroom, in an orderly fashion, **WITHOUT THEIR BAGS** and go directly to their Muster Point. The teacher must ensure that every pupil has evacuated and follow them to Muster Point. It is important that this procedure is followed in a calm and silent **keeping distance of 1.5 m** from one another during the whole procedure.
2. Form teachers are responsible for checking that every pupil in their respective group is accounted for at the relevant Muster Point. The admin team will bring class lists to the muster points.
3. Teacher must raise their arm once all their pupils are accounted for and keep it raised until admin team has checked all registers.
4. If the alarm rings during **break or lunch**, then pupils must leave the building by the assigned route and meet at the relevant Muster Point. **ALL STAFF, whether on duty or not, must facilitate this process.** Those on duty are responsible for checking that **ALL** classrooms/areas within their assigned post are checked.
5. Once all pupils are accounted for, if a full evacuation is necessary, the following procedure begins:
 - i. Y 10 pupils will lead the evacuation on foot from the bottom gate down Filolaou Street, turning right up Aristotelous Street and right into Aristeidou Street where they continue up to the Cultural Centre.
 - ii. **IT IS ESSENTIAL THAT PUPILS WALK IN A QUICK AND ORDERLY FASHION KEEPING TO THE RIGHT-HAND SIDE OF THE ROAD AND 1.5 METRES DISTANCE. IF ANY GROUP DOES NOT PROCEED SWIFTLY IT MEANS THAT TOTAL EVACUATION IS DELAYED AND IN THE EVENT OF AN EMERGENCY THIS MAY PROVE FATAL.**
 - iii. Subject Teachers (both full and part-time) and TA's must spread themselves amongst the evacuating pupils assisting form teachers to keep the line moving **quickly and safely.**
6. At the Cultural Centre, **all staff members are responsible** for accounting for their assigned tasks and designated people, either staff or students.
7. The **Headteacher** will conduct events at the Cultural Centre, pass on any new information or direction and decide when and if it is safe to return or if further cation is required.

School Reopening #BACKSTRONGER



Evacuation Route

KS3-KS4

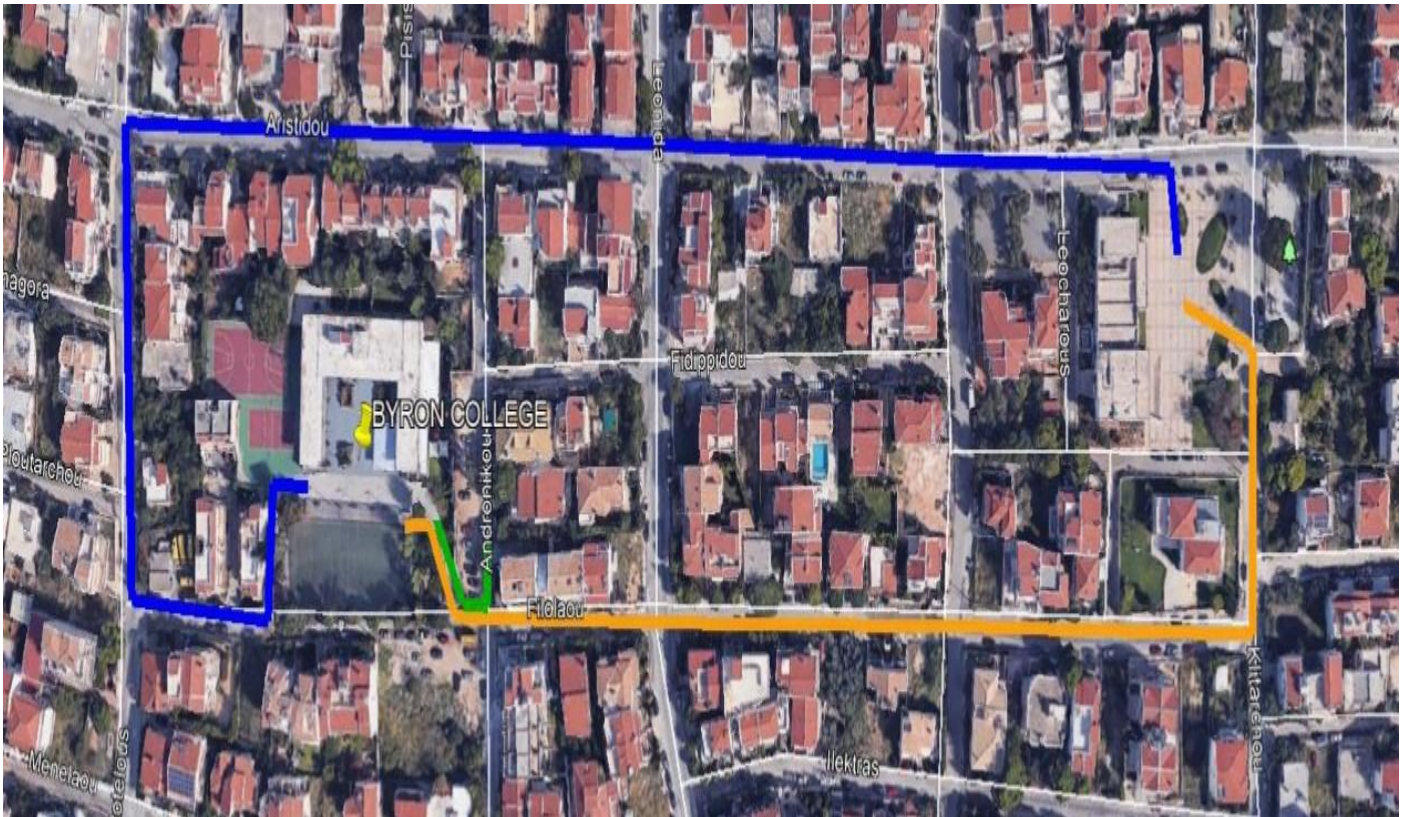
MUSTER POINT – PE OFFICE GATE

RIGHT FILOLAOU

RIGHT ARISTOTELOUS

RIGHT ARISTEIDOU

GERAKAS POLITISTIKO



Byron College - Covid 19 – School Opening Action Plan

We will continually keep abreast of the situation as we have done throughout. We are fully prepared for all eventualities and Government intervention which might include the need for further closure. As we did prior to the initial closure we would again operate a traffic light system as follows:

RED

The school is closed to all students and our system of remote learning will be in operation.

AMBER

The school will open and operational on a minimal/basic” model as follows:

6. School start time of 9.00am (no form period at 8.40am)
7. No lining up outside classrooms – students to enter classrooms when they arrive
8. Maximum of 15 students per class
9. Designated year group spaces for break and lunch time – staggered break/lunch times for Primary Students if they are in school
10. Continued availability of alcohol rub for all members of the school community
11. Continual airing off all classrooms and indoor spaces
12. Any student who is unwell will be quarantined by the school nurse and collected by their parents
13. Any student who has travelled or been exposed to anyone who has travelled during the closure should enter a period of self-quarantine for 14 days
14. No visitors during the school day (visits by appointment outside of lesson time)
15. Virtual parent-teacher meetings
16. No inter-school events, tournaments, sports fixtures or school trips
17. No handshaking or physical contact
18. No whole school or key stage assemblies
19. All students who have been absent due to illness require a doctor’s note of clearance before being readmitted to daily school

GREEN

The School will be open and function as close to normal as possible. Precautions regarding health and hygiene will remain in place.

All parents are instructed not to send their children to school if they have traveled during the closure

Anyone experiencing symptoms, even if mild, in the last 14 days, is instructed to stay at home and to contact your medical practitioner



The Great Exhibition



*



School's Out The Learning Continues

Let us all turn this into something special!

Via the SharePoint folder there are a number of challenges for all different year groups. Why not take a challenge and when we return to school we will exhibit everything to show what a great school we are even in a time of adversity.

**Are You Ready For
The Challenge?**