



School Year 2020-2021

| Month | Mo | Tu | We | Th | Fr | Sa | Su | Holidays/Special | |
|----------------|----|----|----|----|----|----|----|------------------|----------------------|
| August 2020 | | | | | | 1 | 2 | | |
| | 3 | 4 | 5 | 6 | 7 | 8 | 9 | | |
| | 10 | 11 | 12 | 13 | 14 | 15 | 16 | Aug-15 | Assumption |
| | 17 | 18 | 19 | 20 | 21 | 22 | 23 | Aug-19 | Orientation day |
| | 24 | 25 | 26 | 27 | 28 | 29 | 30 | Aug-20 | First day of classes |
| | 31 | | | | | | | | |
| September 2020 | | 1 | 2 | 3 | 4 | 5 | 6 | | |
| | 7 | 8 | 9 | 10 | 11 | 12 | 13 | | |
| | 14 | 15 | 16 | 17 | 18 | 19 | 20 | | |
| | 21 | 22 | 23 | 24 | 25 | 26 | 27 | | |
| | 28 | 29 | 30 | | | | | | |
| October 2020 | | | | 1 | 2 | 3 | 4 | Oct 01/02 | No school |
| | 5 | 6 | 7 | 8 | 9 | 10 | 11 | Oct 03 | Local holiday |
| | 12 | 13 | 14 | 15 | 16 | 17 | 18 | | |
| | 19 | 20 | 21 | 22 | 23 | 24 | 25 | | |
| | 26 | 27 | 28 | 29 | 30 | 31 | | | |
| November 2020 | | | | | | | 1 | Nov-01 | All Saints Day |
| | 2 | 3 | 4 | 5 | 6 | 7 | 8 | Nov-02 | Fall Break begins |
| | 9 | 10 | 11 | 12 | 13 | 14 | 15 | | |
| | 16 | 17 | 18 | 19 | 20 | 21 | 22 | Nov-18 | PD Day /no classes |
| | 23 | 24 | 25 | 26 | 27 | 28 | 29 | | |
| | 30 | | | | | | | | |
| December 2020 | | 1 | 2 | 3 | 4 | 5 | 6 | | |
| | 7 | 8 | 9 | 10 | 11 | 12 | 13 | | |
| | 14 | 15 | 16 | 17 | 18 | 19 | 20 | Dec-23 | Winter Break begins |
| | 21 | 22 | 23 | 24 | 25 | 26 | 27 | Dec 25/26 | Christmas |
| | 28 | 29 | 30 | 31 | | | | | |

| | | | | | | | | | |
|----------------|----|----|----|----|----|----|----|-----------|---------------------------|
| January 2021 | | | | | 1 | 2 | 3 | Jan-01 | New Years Day |
| | 4 | 5 | 6 | 7 | 8 | 9 | 10 | Jan-06 | Epiphany |
| | 11 | 12 | 13 | 14 | 15 | 16 | 17 | | |
| | 18 | 19 | 20 | 21 | 22 | 23 | 24 | | |
| February 2021 | 25 | 26 | 27 | 28 | 29 | 30 | 31 | | |
| | 1 | 2 | 3 | 4 | 5 | 6 | 7 | | |
| | 8 | 9 | 10 | 11 | 12 | 13 | 14 | | |
| | 15 | 16 | 17 | 18 | 19 | 20 | 21 | Feb-15 | Ski week begins |
| March 2021 | 22 | 23 | 24 | 25 | 26 | 27 | 28 | | |
| | 1 | 2 | 3 | 4 | 5 | 6 | 7 | | |
| | 8 | 9 | 10 | 11 | 12 | 13 | 14 | | |
| | 15 | 16 | 17 | 18 | 19 | 20 | 21 | | |
| April 2021 | 22 | 23 | 24 | 25 | 26 | 27 | 28 | | |
| | 29 | 30 | 31 | | | | | Mar-29 | Spring break begins |
| | | | | 1 | 2 | 3 | 4 | Apr-02 | Good Friday |
| | 5 | 6 | 7 | 8 | 9 | 10 | 11 | Apr 04/05 | Easter |
| May 2021 | 12 | 13 | 14 | 15 | 16 | 17 | 18 | | |
| | 19 | 20 | 21 | 22 | 23 | 24 | 25 | | |
| | 26 | 27 | 28 | 29 | 30 | | | | |
| | | | | | | 1 | 2 | May-01 | May Day |
| June 2021 | 3 | 4 | 5 | 6 | 7 | 8 | 9 | | |
| | 10 | 11 | 12 | 13 | 14 | 15 | 16 | May-13 | Ascension |
| | 17 | 18 | 19 | 20 | 21 | 22 | 23 | May-23 | Whit-Sunday |
| | 24 | 25 | 26 | 27 | 28 | 29 | 30 | May-24 | Whit-Monday |
| July 2021 | 31 | | | | | | | | |
| | | 1 | 2 | 3 | 4 | 5 | 6 | Jun-03 | Corpus Christi |
| | 7 | 8 | 9 | 10 | 11 | 12 | 13 | Jun-04 | No school |
| | 14 | 15 | 16 | 17 | 18 | 19 | 20 | | |
| August 2021 | 21 | 22 | 23 | 24 | 25 | 26 | 27 | | |
| | 28 | 29 | 30 | | | | | | |
| | | | | 1 | 2 | 3 | 4 | Jul-02 | Last day of school |
| | 5 | 6 | 7 | 8 | 9 | 10 | 11 | Jul-05 | Beginning of Summer Break |
| | 12 | 13 | 14 | 15 | 16 | 17 | 18 | | |
| September 2021 | 19 | 20 | 21 | 22 | 23 | 24 | 25 | | |
| | 26 | 27 | 28 | 29 | 30 | 31 | | | |



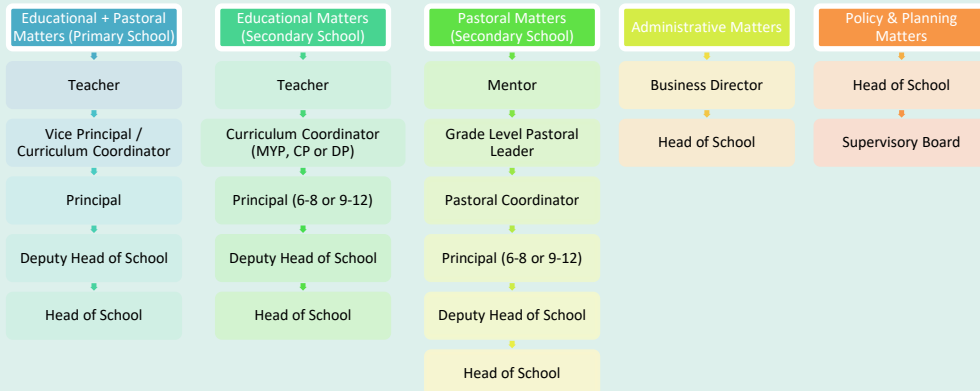
Contact Guide

The BIS Contact Guide is based on the understanding that whenever a question, issue or problem arises, **the solution is first to be sought at its source**. In any situation, it is best to go to the person directly concerned in order to ensure that parents:

- Gain **first-hand information**,
- Get the **complete story**,
- Receive a **quick and appropriate response**,
- Support the **concept of open communication**, and
- Join the school **as a partner in learning**

In general, if it involves your child’s day-to-day education, classroom activities, relationships or requirements you should **first contact your child’s teacher**, either personally or in writing.

We trust that in following this contact guide you will receive timely and appropriate attention to your suggestions, queries and concerns, and that our commitment to open communication will assist in **maintaining the concept of an effective, efficient and friendly community of learners driven by the school’s mission**.



Emergency Contacts

School Offices

Secondary School Haimhausen Campus: +49 (0)8133 917 151
 Primary School Haimhausen Campus: +49 (0)8133 917 161
 Primary School City Campus: +49 (0)89 89655 512

Transportation

Haimhausen Campus: +49 (0)171 527 2405

Nurse

Haimhausen Campus: +49 (0)8133 917 -163
 City Campus: +49 (0) 89 89 655 -506

Head of Student Support Services & Child Protection Officer

Direct Dial: +49 (0)8133 917 -154
 Mobile: +49 151 17133893

After School Activities

Haimhausen Campus: +49 (0)8133 917 -271 – Phil Drake
 City Campus: +49 (0) 89 89 655 -630 - Nancy Herrington

Should After School Activity Coordinator not be available, please contact directly the school offices!

Head of School

Phone: +49 (0)8133 917 -111

Business Director

Phone: +49 (0)8133 917 -124