

Section 2: Enrollment

Osseo Area Schools is the fifth-largest school district in Minnesota, serving all or parts of eight cities: Brooklyn Center, Brooklyn Park, Corcoran, Dayton, Maple Grove, Osseo, Plymouth, and Rogers. In 2017-2018, the total resident population of the Osseo School District is 148,029 and the geographic area is 66 square miles. Exhibit 2A is a map showing the location of each school and the boundaries of Osseo Area Schools along with city boundaries.

The chart below depicts enrollment history and projections by grade level for Osseo Area Schools. The blue arrows in the chart are described later in this document.

| Enrollment History and Projections | | | | | | | | | | |
|------------------------------------|---------------|---------------|---------------|---------------|---------------|---------------|---------------|---------------|---------------|---------------|
| | FY 2014 | FY 2015 | FY 2016 | FY 2017 | FY 2018 | FY 2019 | FY 2020 | FY 2021 | FY 2022 | FY 2023 |
| Henn Cty Births | 16,566 | 16,334 | 15,955 | 15,943 | 16,345 | 16,584 | 16,770 | 16,829 | 16,485 | 16,493 |
| Kindergarten | 1,693 | 1,597 | 1,545 | 1,518 | 1,539 | 1,575 | 1,592 | 1,598 | 1,565 | 1,566 |
| Grade 1 | 1,620 | 1,666 | 1,546 | 1,517 | 1,578 | 1,552 | 1,588 | 1,606 | 1,611 | 1,578 |
| Grade 2 | 1,662 | 1,565 | 1,627 | 1,546 | 1,529 | 1,578 | 1,552 | 1,588 | 1,606 | 1,612 |
| Grade 3 | 1,533 | 1,597 | 1,576 | 1,633 | 1,545 | 1,526 | 1,575 | 1,549 | 1,585 | 1,603 |
| Grade 4 | 1,603 | 1,509 | 1,564 | 1,564 | 1,685 | 1,552 | 1,534 | 1,583 | 1,557 | 1,593 |
| Grade 5 | 1,506 | 1,525 | 1,488 | 1,541 | 1,591 | 1,687 | 1,555 | 1,536 | 1,585 | 1,559 |
| Kind - Grade 5 | 9,617 | 9,459 | 9,346 | 9,319 | 9,467 | 9,470 | 9,396 | 9,460 | 9,509 | 9,511 |
| Grade 6 | 1,524 | 1,466 | 1,462 | 1,385 | 1,496 | 1,523 | 1,616 | 1,488 | 1,471 | 1,518 |
| Grade 7 | 1,450 | 1,405 | 1,420 | 1,488 | 1,430 | 1,537 | 1,565 | 1,660 | 1,529 | 1,511 |
| Grade 8 | 1,491 | 1,460 | 1,444 | 1,450 | 1,519 | 1,455 | 1,564 | 1,592 | 1,689 | 1,556 |
| Grade 6-8 | 4,465 | 4,331 | 4,326 | 4,323 | 4,445 | 4,515 | 4,745 | 4,740 | 4,689 | 4,585 |
| Grade 9 | 1,529 | 1,505 | 1,664 | 1,656 | 1,656 | 1,737 | 1,664 | 1,788 | 1,821 | 1,931 |
| Grade 10 | 1,466 | 1,587 | 1,569 | 1,683 | 1,647 | 1,656 | 1,738 | 1,664 | 1,789 | 1,821 |
| Grade 11 | 1,550 | 1,479 | 1,603 | 1,579 | 1,650 | 1,646 | 1,655 | 1,736 | 1,663 | 1,787 |
| Grade 12 | 1,674 | 1,649 | 1,591 | 1,680 | 1,676 | 1,755 | 1,750 | 1,760 | 1,846 | 1,768 |
| Grade 9-12 | 6,219 | 6,220 | 6,427 | 6,598 | 6,629 | 6,794 | 6,807 | 6,948 | 7,119 | 7,307 |
| Kind - Gr 12 | 20,301 | 20,010 | 20,099 | 20,240 | 20,541 | 20,779 | 20,948 | 21,148 | 21,317 | 21,403 |

Exhibits 2B, 2C-1, and 2C-2 depict these enrollment trends by school. Schools are sorted alphabetically by the city within which they are located.


Enrollment Projection Overview

The same calculation is used every year to consistently create reliable enrollment projections by site and grade level. These calculations can only be relied upon to create reasonable enrollment projections when historical patterns can be expected to hold into the future. When some break in pattern is reasonably projectable, calculations are adjusted to reflect the pattern break. Breaks in pattern can be caused by things such as new housing developments, opening of a charter or private school within the district, or program or attendance area changes that cause students to

move into or out of the district. In preparing the FY 2019 five-year enrollment projections, pattern breaks emerged in several buildings and grade levels throughout the district.

Enrollment Projection Methodology

- **Kindergarten: Capture Rate**
Enrollment projections begin with a calculation of kindergarten enrollment. Kindergarten projections are based upon birth rates in Hennepin County five years prior. This assumes that the cohort of births will produce kindergarten-age students five years in the future. Projections begin with the historical ratio of Hennepin County births to the actual Osseo Area Schools kindergarten class five years later, or the “kindergarten capture rate.” Generally, this capture rate is averaged over a six-year period, then this six-year average is applied to the projection year’s births to estimate kindergarten enrollment.

- **Grades 1-12: Cohort Survival**
Enrollment projections for grades 1-12 are calculated using a “cohort survival” method, which is a common method for forecasting future enrollment. The cohort survival method calculates the ratio of student enrollment in a base year grade level to a future year’s successive grade level. In other words, the method determines the percentage of students who “survive” from the base year to the next grade level in a future year. For example, as indicated with an  in the chart above, the 2016-17 fifth grade enrollment was 1,541 and the 2017-18 sixth grade enrollment was 1,496. In this case, fifth grade one-year cohort survival ratio is .97 ($1,496 \div 1,541$). This means that 97% of the fifth grade enrollment “survived” into sixth grade. This results from patterns of students transferring into and out of the district for various reasons (e.g. family move into/out of district, state or country; student transfer from/to another MN public school district, charter school, or private school). The district generally uses a six-year cohort survival average to generate enrollment projections for grades 1 -12. The six-year average smooths out peaks and valleys over time.

Enrollment projection variation due to Breaks in Pattern

In FY 2018, K-12th grade actual November 1 enrollment of 20,541 was 203 students above the projection of 20,338 (a variance of 1%; see Exhibit 2D). The average variance by grade level was 1.09%, ranging from 56 students under projection at 10th grade to 76 students over projection at 2nd grade. The average variance by site was 2.51%, ranging from 63 students under projection at Osseo Senior High to 85 students over projection at Brooklyn Middle School. This level of variance indicates that the standard six-year survival rate is less accurate at the school and grade level than it is at the district level, which suggests that there are some breaks in pattern at some grade and site levels. A study of these breaks in pattern resulted in adjustments to the FY 2019 5-year enrollment projections.

- **Break in Pattern: Kindergarten**
For FY 2019 and beyond, the kindergarten calculation has been adjusted to reflect a kindergarten capture rate averaged over the previous three years (rather than six years). The kindergarten capture rate has declined steadily over the past six years, from a high of 10.2% in FY 2014 to a low of 9.4% in FY 2018. For FY 2019 five-year projections, a three-year kindergarten capture rate (9.5%) was used to project kindergarten enrollment; this calculation produced a projected kindergarten enrollment for FY 2019 of 1,575 students. The usual six-year calculation (9.6%) would have resulted in a projection of 1,597 (a difference of 22 students). While this difference is subtle, it will become more pronounced over the five-year projection period as these kindergarten students progress through grade levels.

- **Break in Pattern: Grades 1-12**
Grade level enrollment projections are generally calculated by applying a six-year average of the “cohort survival” ratio to each grade level and site. A detailed analysis surfaced the following breaks in pattern:

1. **Grade span change**

Beginning in FY 2015, elementary school grade spans were re-aligned districtwide to serve pre-kindergarten through 5th grade. Sixth grade remained in elementary schools for FY 2015, then moved to middle schools beginning in FY 2016. Two elementary schools (Cedar Island and Fair Oaks) had previously served only grades pre-k-3 and one elementary school (Oak View) had previously served only grades 4-6. The remaining 14 elementary schools had previously served grades K-6. FY 2018 marked the fourth year in the new grade spans, establishing three years of new grade level cohort survival patterns. This produced enough historical data to reliably use a three-year cohort survival to project enrollment at Cedar Island, Fair Oaks and Oak View beginning in FY 2019. A three-year cohort survival was also used to project first and fifth grade enrollment at all other elementary schools beginning in FY 2019. We expect to increase this cohort survival term by one year annually to eventually return to a six-year cohort survival pattern at all schools and grade levels.

In FY 2016 middle schools began to serve grades 6-8 (previously they had served grades 7-9) while senior high schools began to serve grades 9-12 (previously they had served grades 10-12). FY 2018 marked the third year in these new grade spans, establishing two years of new grade-level cohort survival patterns. This produced enough historical data to reliably use a two-year cohort survival (rather than six-year) to project enrollment for the new transition grade and the previous transition grade for both middle schools and senior high schools, grades 6, 7, 9 and 10. We expect to increase this cohort survival term by one year annually to eventually return to a six-year cohort survival pattern at all schools and grade levels.

2. Housing and students per household

At two elementary schools (Edinbrook and Rice Lake) a new pattern of year-over-year growth has emerged over the past three year; therefore, FY 2019 enrollment projections in grades 1-5 for these two schools used a three-year (rather than six-year) cohort survival. Grade-level cohort survival trends for these two schools have increased by more than two-three percentage points in the past three years. While other elementary schools (for example, Basswood) are also growing their growth pattern has not changed, so the traditional six-year survival pattern should account for continued growth at these schools. While further analysis is necessary, preliminary data suggests increased growth patterns for the number of students in apartment/townhome households and for single family home turnover in the Edinbrook and Rice Lake attendance areas.

The tables below summarize the methodology utilized to calculate FY 2019 enrollment projections at grade levels and schools after incorporating Breaks in Pattern.

| Grade | Capture Rate | Elementary Grade Level Survival | | | | |
|-----------------------------------|--------------|---------------------------------|---------|---------|---------|---------|
| | Kindergarten | Grade 1 | Grade 2 | Grade 3 | Grade 4 | Grade 5 |
| All Schools | 3-Year | 3-year | 6-year | 6-year | 6-year | 3-year |
| Cedar Island, Fair Oaks, Oak View | 3-Year | 3-year | 3-year | 3-year | 3-year | 3-year |
| Edinbrook, Rice Lake | 3-Year | 3-year | 3-year | 3-year | 3-year | 3-year |

| Secondary Grade Level Survival | | | | | | | |
|------------------------------------|---------|---------|---------|---------|----------|----------|----------|
| Grade | Grade 6 | Grade 7 | Grade 8 | Grade 9 | Grade 10 | Grade 11 | Grade 12 |
| All Middle and Senior High Schools | 2-year | 2-year | 6-year | 2-year | 2-year | 6-year | 6-year |

Indicates grades/sites in which a 6-year grade-level survival methodology was retained.

➤ Break in Pattern: Undeveloped Land

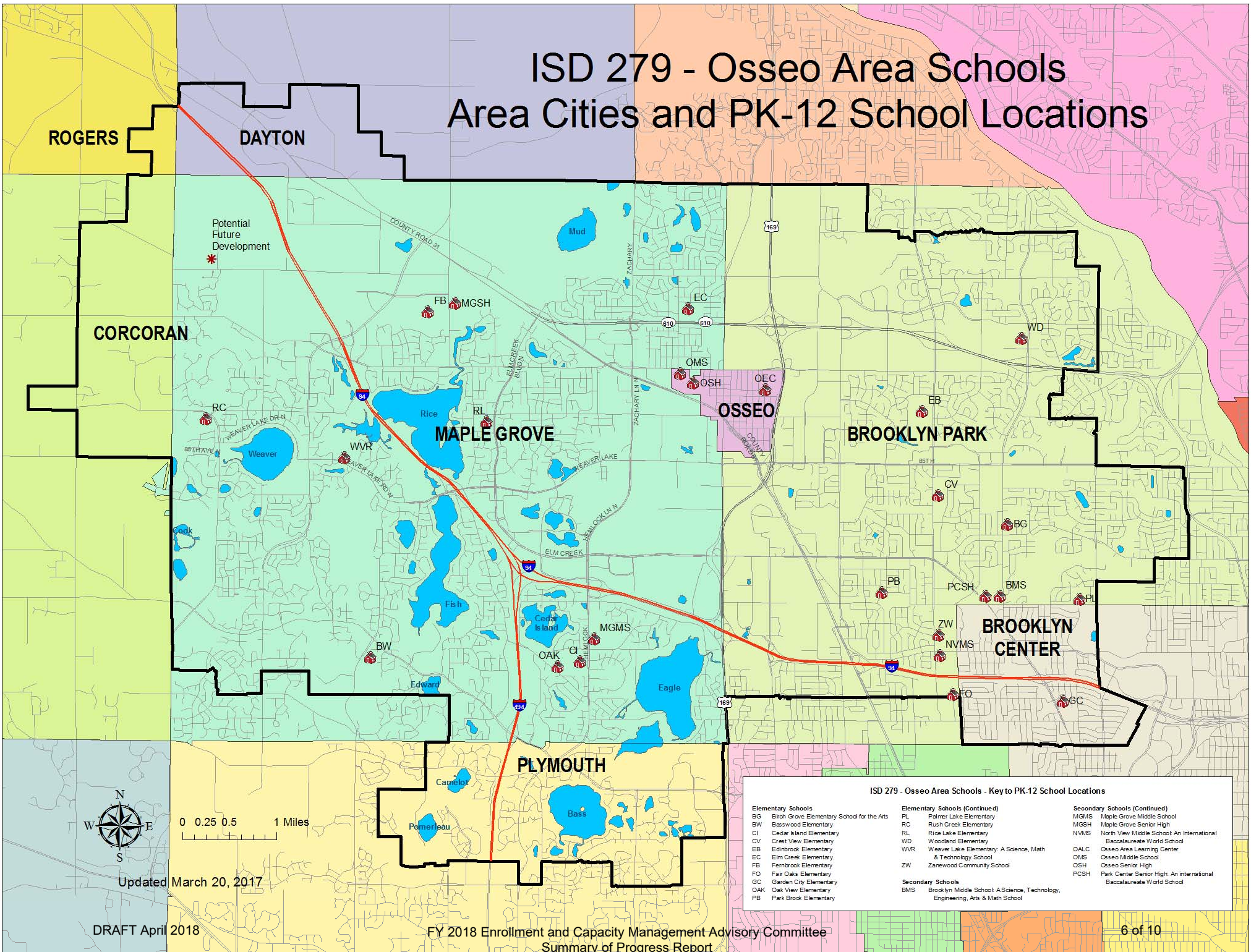
Many discussions occur on a regular basis between the district and staff at all cities served by the school district to predict potential enrollment changes due to city development. In times of normal development, the usual cohort survival methodology will account for trends in development and normal housing turnover. In times when housing construction on formerly undeveloped land is expected to produce school-aged children, incremental enrollment increases can be inserted into projections.

Through ongoing discussions with the City of Maple Grove, staff continually monitors the timing of the anticipated growth in northwest Maple Grove. In recent conversations with city staff, district leaders have begun to quantify potential future growth, all of which is in the current Fernbrook Elementary School attendance area. Based on early land use information about areas identified for potential low to medium density residential development (single family homes), we can begin to project from 700 to as many as 1,400 students could emerge from areas in northwest Maple Grove. Much more information is necessary before we can begin to include these students in enrollment projections. This growth will be officially included in enrollment projections when more information becomes available. In the

meantime, Fernbrook Elementary School and Rush Creek Elementary School, whose attendance area is just south of this area of future anticipated growth, are closed to open enrollment; both of these schools have available capacity that is being held to absorb some of the anticipated growth. Keeping these two schools closed to open enrollment will help to avoid potential future boundary changes that would move students from within the current attendance area because available capacity had been used by students enrolled from outside the attendance area.

The district owns land in the area of anticipated growth (see Exhibit 2A area marked “potential future development”) and staff has taken proactive steps to consider options, costs, and funding timelines necessary to build a new school if and when enrollment projections begin to reasonably predict this need.

ISD 279 - Osseo Area Schools Area Cities and PK-12 School Locations



Updated March 20, 2017

DRAFT April 2018

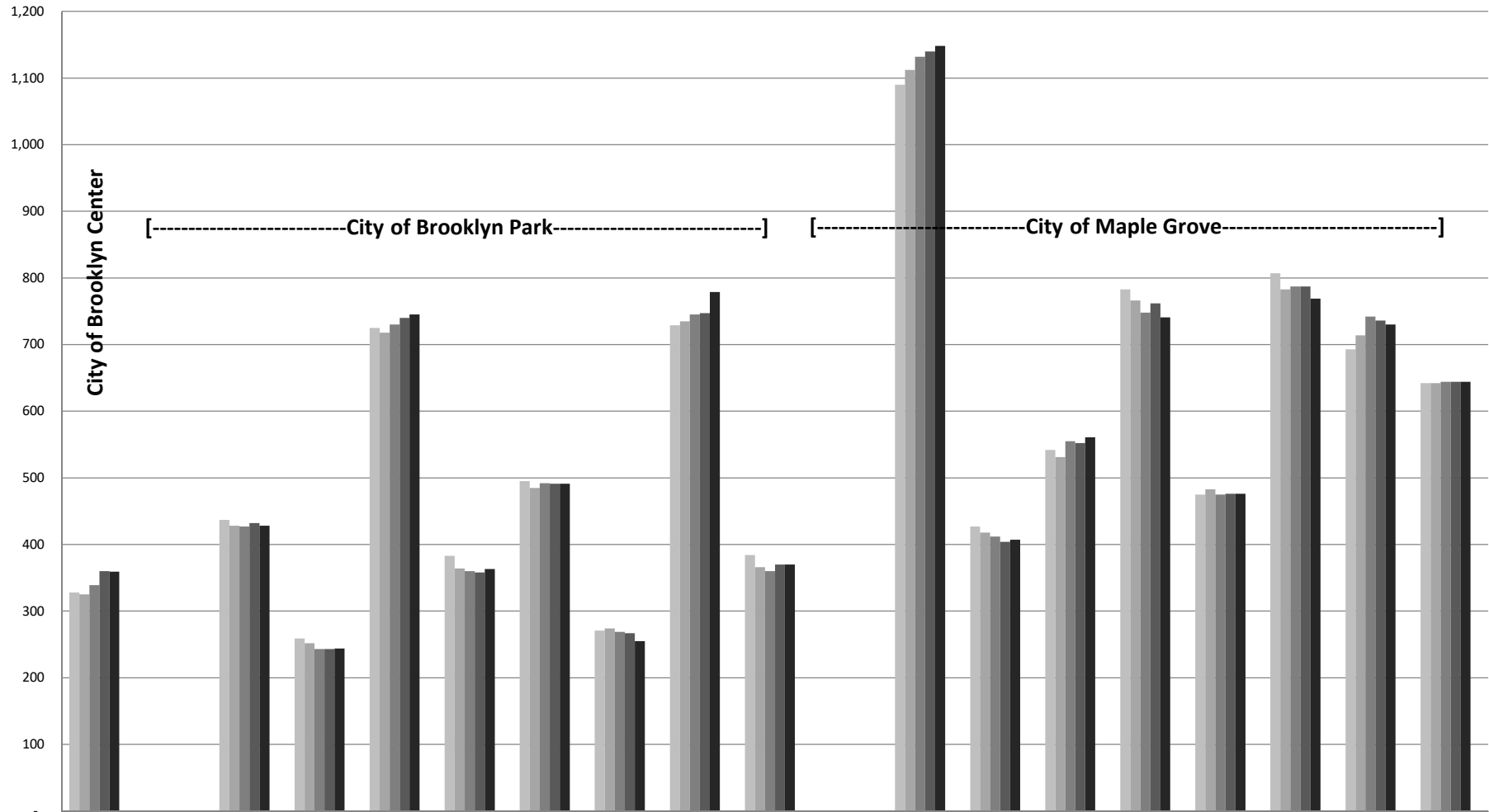
ISD 279 - Osseo Area Schools - Key to PK-12 School Locations

| Elementary Schools | Elementary Schools (Continued) | Secondary Schools (Continued) |
|---|--|--|
| BG Birch Grove Elementary School for the Arts | PL Palmer Lake Elementary | MGMMS Maple Grove Middle School |
| BW Basswood Elementary | RC Rush Creek Elementary | MGSH Maple Grove Senior High |
| CI Cedar Island Elementary | RL Rice Lake Elementary | NVMS North View Middle School; An International Baccalaureate World School |
| CV Crest View Elementary | WD Woodland Elementary | OALC Osseo Area Learning Center |
| EB Edinbrook Elementary | WVR Weaver Lake Elementary; A Science, Math & Technology School | OMS Osseo Middle School |
| EC Elm Creek Elementary | ZW Zanewood Community School | OSH Osseo Senior High |
| FB Fembrook Elementary | | PCSH Park Center Senior High; An International Baccalaureate World School |
| FO Fair Oaks Elementary | | |
| GC Garden City Elementary | | |
| OAK Oak View Elementary | | |
| PB Park Brook Elementary | | |
| | Secondary Schools | |
| | BMS Brooklyn Middle School; A Science, Technology, Engineering, Arts & Math School | |

Exhibit 2B

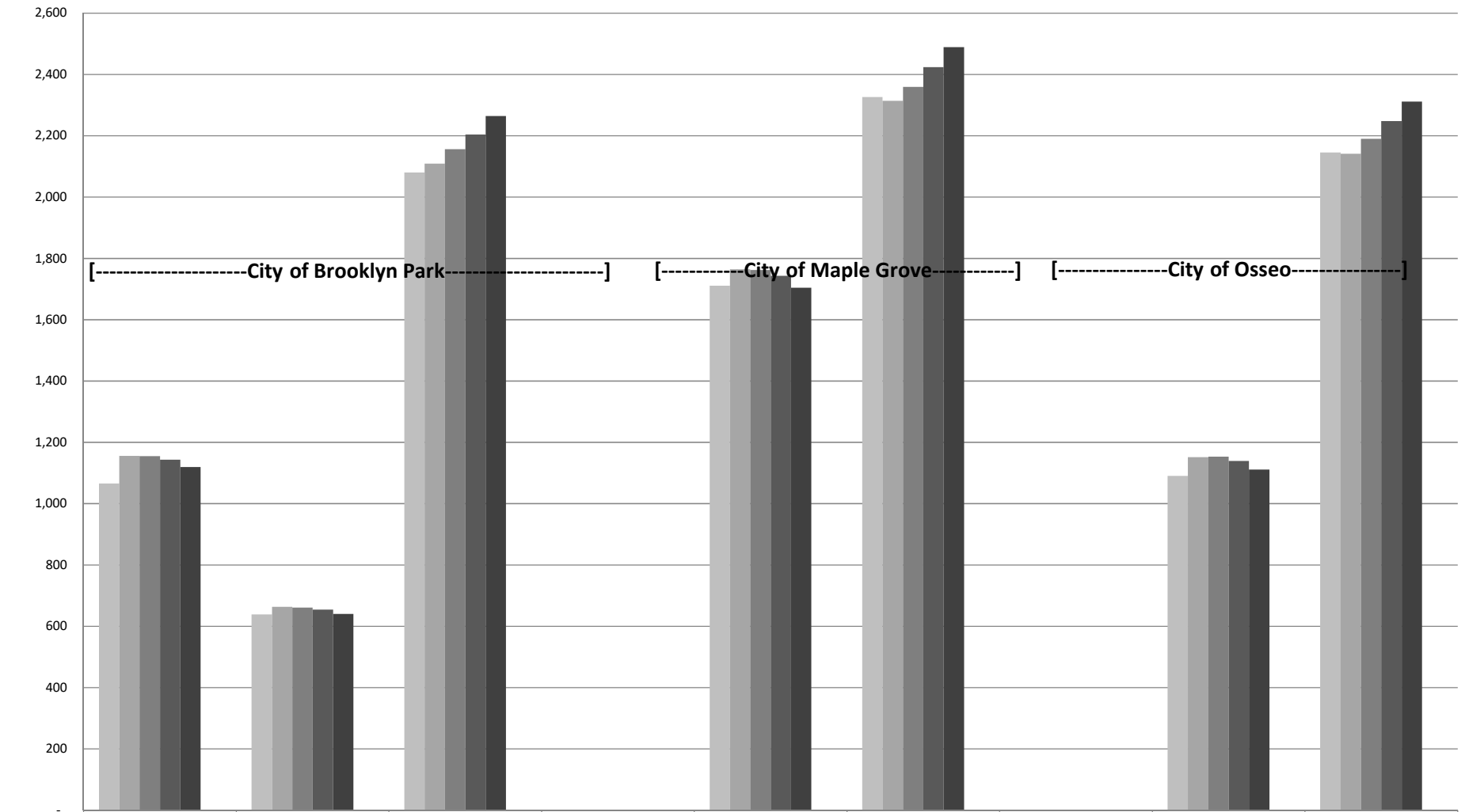
| Osseo Area Schools - Grade and Site Enrollment Estimates | | | | | | | | | | | | | | | | | | | | | | | | | | | | | | |
|--|---|--------------|--------------|--------------|--------------|--------------|--------------|--------------|--------------|--------------|--------------|--------------|--------------|--------------------|----------------|-----------------|----------------------|---------------|---------------|---------------|---------------|---------------|--------------|--------------|---------------|---------------|---------------|---------------|------------|--------------|
| School Name | Projection for Fall of 2018 (Fiscal Year (FY) 2019) | | | | | | | | | | | | | | | | Five-Year Projection | | | | | | | | | | | | | |
| | K | 1 | 2 | 3 | 4 | 5 | 6 | 7 | 8 | 9 | 10 | 11 | 12 | FY 2019 Projection | FY 2018 Actual | One-Year Change | FY 2020 | FY 2021 | FY 2022 | FY 2023 | 5-Year Change | | | | | | | | | |
| City of Brooklyn Center | | | | | | | | | | | | | | | | | | | | | | | | | | | | | | |
| Garden City | 61 | 60 | 60 | 38 | 47 | 62 | | | | | | | | | 328 | 329 | (1) | -0.30% | 325 | 339 | 360 | 359 | 30 | 9.12% | | | | | | |
| City of Brooklyn Park | | | | | | | | | | | | | | | | | | | | | | | | | | | | | | |
| Birch Grove | 66 | 64 | 73 | 66 | 82 | 86 | | | | | | | | 437 | 442 | (5) | -1.13% | 428 | 427 | 432 | 428 | (14) | -3.17% | | | | | | | |
| Crest View | 50 | 43 | 38 | 38 | 44 | 46 | | | | | | | | 259 | 265 | (6) | -2.26% | 252 | 243 | 243 | 244 | (21) | -7.92% | | | | | | | |
| Edinbrook | 113 | 116 | 120 | 117 | 118 | 141 | | | | | | | | 725 | 706 | 19 | 2.69% | 718 | 730 | 740 | 745 | 39 | 5.52% | | | | | | | |
| Fair Oaks | 68 | 64 | 58 | 61 | 59 | 73 | | | | | | | | 383 | 395 | (12) | -3.04% | 364 | 360 | 358 | 363 | (32) | -8.10% | | | | | | | |
| Palmer Lake | 83 | 83 | 80 | 82 | 74 | 93 | | | | | | | | 495 | 506 | (11) | -2.17% | 485 | 492 | 491 | 491 | (15) | -2.96% | | | | | | | |
| Park Brook | 39 | 41 | 50 | 44 | 50 | 47 | | | | | | | | 271 | 272 | (1) | -0.37% | 274 | 269 | 267 | 255 | (17) | -6.25% | | | | | | | |
| Woodland | 135 | 132 | 99 | 125 | 116 | 122 | | | | | | | | 729 | 728 | 1 | 0.14% | 735 | 745 | 747 | 779 | 51 | 7.01% | | | | | | | |
| Zanewood | 71 | 70 | 65 | 46 | 60 | 72 | | | | | | | | 384 | 392 | (8) | -2.04% | 366 | 360 | 370 | 370 | (22) | -5.61% | | | | | | | |
| City of Maple Grove | | | | | | | | | | | | | | | | | | | | | | | | | | | | | | |
| Basswood | 186 | 186 | 182 | 184 | 180 | 172 | | | | | | | | 1,090 | 1,067 | 23 | 2.16% | 1,112 | 1,132 | 1,140 | 1,148 | 81 | 7.59% | | | | | | | |
| Cedar Island | 69 | 69 | 65 | 73 | 72 | 79 | | | | | | | | 427 | 443 | (16) | -3.61% | 418 | 412 | 404 | 407 | (36) | -8.13% | | | | | | | |
| Elm Creek | 90 | 90 | 86 | 97 | 72 | 107 | | | | | | | | 542 | 524 | 18 | 3.44% | 531 | 555 | 552 | 561 | 37 | 7.06% | | | | | | | |
| Fernbrook | 119 | 122 | 146 | 113 | 143 | 140 | | | | | | | | 783 | 783 | 0 | 0.00% | 766 | 748 | 762 | 741 | (42) | -5.36% | | | | | | | |
| Oak View | 87 | 79 | 77 | 76 | 89 | 67 | | | | | | | | 475 | 469 | 6 | 1.28% | 483 | 475 | 476 | 476 | 7 | 1.49% | | | | | | | |
| Rush Creek | 123 | 121 | 146 | 133 | 129 | 155 | | | | | | | | 807 | 814 | (7) | -0.86% | 783 | 787 | 787 | 769 | (45) | -5.53% | | | | | | | |
| Rice Lake | 120 | 119 | 125 | 125 | 98 | 106 | | | | | | | | 693 | 689 | 4 | 0.58% | 714 | 742 | 736 | 730 | 41 | 5.95% | | | | | | | |
| Weaver Lake | 95 | 93 | 108 | 108 | 119 | 119 | | | | | | | | 642 | 643 | (1) | -0.16% | 642 | 644 | 644 | 644 | 1 | 0.16% | | | | | | | |
| Elementary School Total | 1,575 | 1,552 | 1,578 | 1,526 | 1,552 | 1,687 | | | | | | | | 9,470 | 9,467 | 3 | 0.03% | 9,396 | 9,460 | 9,509 | 9,510 | 43 | 0.45% | | | | | | | |
| City of Brooklyn Park | | | | | | | | | | | | | | | | | | | | | | | | | | | | | | |
| Brooklyn Middle | | | | | | | | | | | | | | 371 | 374 | 321 | | | | | | | | | | | | | | |
| North View Middle | | | | | | | | | | | | | | 226 | 211 | 202 | | | | | | | | | | | | | | |
| Park Center Senior | | | | | | | | | | | | | | | | | | | | | | | | | | | | | | |
| City of Maple Grove | | | | | | | | | | | | | | | | | | | | | | | | | | | | | | |
| Maple Grove Middle | | | | | | | | | | | | | | 577 | 570 | 563 | | | | | | | | | | | | | | |
| Maple Grove Senior | | | | | | | | | | | | | | | | | | | | | | | | | | | | | | |
| City of Osseo | | | | | | | | | | | | | | | | | | | | | | | | | | | | | | |
| Osseo Middle | | | | | | | | | | | | | | 349 | 378 | 364 | | | | | | | | | | | | | | |
| Osseo Senior | | | | | | | | | | | | | | | | | | | | | | | | | | | | | | |
| Secondary School Total | | | | | | | | | | | | | | 1,523 | 1,533 | 1,450 | 1,730 | 1,642 | 1,615 | 1,564 | 11,057 | 10,822 | 235 | 2.17% | 11,300 | 11,436 | 11,556 | 11,639 | 817 | 7.55% |
| Osseo Sec Transition Center | | | | | | | | | | | | | | - | - | - | - | - | - | 77 | 77 | 0 | 0.00% | 77 | 77 | 77 | 77 | - | - | |
| Osseo Area Learning Center | | | | | | | | | | | | | | - | - | - | 2 | 12 | 26 | 112 | 152 | 152 | 0 | 0.00% | 152 | 152 | 152 | 152 | - | - |
| Achieve | | | | | | | | | | | | | | - | 4 | 5 | 5 | 2 | 5 | 2 | 23 | 23 | 0 | 0.00% | 23 | 23 | 23 | 23 | - | - |
| Subtotal | | | | | | | | | | | | | | - | 4 | 5 | 7 | 14 | 31 | 191 | 252 | 252 | 0 | 0.00% | 252 | 252 | 252 | 252 | - | - |
| Grand Total Enrollment | 1,575 | 1,552 | 1,578 | 1,526 | 1,552 | 1,687 | 1,523 | 1,537 | 1,455 | 1,737 | 1,656 | 1,646 | 1,755 | 20,779 | 20,541 | 238 | 1.16% | 20,948 | 21,148 | 21,317 | 21,401 | 860 | 4.19% | | | | | | | |

Osseo Area Schools Five-Year Elementary Enrollment Projection November 2018 to November 2023



| | Garden City | City of Brooklyn Park | Birch Grove | Crest View | Edinbrook | Fair Oaks | Palmer Lake | Park Brook | Woodland | Zanewood | City of Maple Grove | Basswood | Cedar Island | Elm Creek | Fernbrook | Oak View | Rush Creek | Rice Lake | Weaver Lake |
|--------------|-------------|-----------------------|-------------|------------|-----------|-----------|-------------|------------|----------|----------|---------------------|----------|--------------|-----------|-----------|----------|------------|-----------|-------------|
| FY 2019 | 328 | | 437 | 259 | 725 | 383 | 495 | 271 | 729 | 384 | | 1,090 | 427 | 542 | 783 | 475 | 807 | 693 | 642 |
| FY 2020 | 325 | | 428 | 252 | 718 | 364 | 485 | 274 | 735 | 366 | | 1,112 | 418 | 531 | 766 | 483 | 783 | 714 | 642 |
| FY 2021 | 339 | | 427 | 243 | 730 | 360 | 492 | 269 | 745 | 360 | | 1,132 | 412 | 555 | 748 | 475 | 787 | 742 | 644 |
| FY 2022 | 360 | | 432 | 243 | 740 | 358 | 491 | 267 | 747 | 370 | | 1,140 | 404 | 552 | 762 | 476 | 787 | 736 | 644 |
| FY 2023 | 359 | | 428 | 244 | 745 | 363 | 491 | 255 | 779 | 370 | | 1,148 | 407 | 561 | 741 | 476 | 769 | 730 | 644 |
| 5 yr. Change | 9.12% | | -3.17% | -7.92% | 5.52% | -8.10% | -2.96% | -6.25% | 7.01% | -5.61% | | 7.59% | -8.13% | 7.06% | -5.36% | 1.49% | -5.53% | 5.95% | 0.16% |

Osseo Area Schools Five-Year Secondary School Enrollment Projection November 2018 to November 2023



| | Brooklyn Middle | North View Middle | Park Center Senior | City of Maple Grove | Maple Grove Middle | Maple Grove Senior | City of Osseo | Osseo Middle | Osseo Senior |
|--------------|-----------------|-------------------|--------------------|---------------------|--------------------|--------------------|---------------|--------------|--------------|
| FY 2019 | 1,066 | 639 | 2,080 | | 1,711 | 2,326 | | 1,091 | 2,145 |
| FY 2020 | 1,156 | 664 | 2,109 | | 1,764 | 2,314 | | 1,152 | 2,141 |
| FY 2021 | 1,155 | 661 | 2,156 | | 1,762 | 2,359 | | 1,153 | 2,190 |
| FY 2022 | 1,144 | 654 | 2,204 | | 1,743 | 2,424 | | 1,139 | 2,248 |
| FY 2023 | 1,120 | 640 | 2,264 | | 1,704 | 2,489 | | 1,111 | 2,311 |
| 5 yr. Change | 10.34% | -2.74% | 10.98% | | -0.99% | 9.65% | | 6.62% | 11.32% |

Exhibit 2D

| Osseo Area Schools - Grade & Site Enrollment Variance from Projections as of 11/01/2017 | | | | | | | | | | | | | | | |
|---|--------------------------------------|-----------|-----------|-----------|-----------|-----------|--------------------------------------|-----------|-----------|------------|-------------|-------------|-------------|--------------|--------------|
| School Name | 10 or more students above projection | | | | | | 10 or more students below projection | | | | | | 5% above | | |
| | Grade Level | | | | | | | | | | | | | | 5% below |
| | Kindergarten | 1 | 2 | 3 | 4 | 5 | 6 | 7 | 8 | 9 | 10 | 11 | 12 | K-12 | % Variance |
| Basswood Elementary | 8 | 12 | 4 | 0 | 8 | 1 | | | | | | | | 33 | 3.2% |
| Birch Grove Elementary | (4) | 3 | 3 | 4 | 11 | (2) | | | | | | | | 15 | 3.5% |
| Cedar Island Elementary | 4 | 8 | (7) | 3 | 3 | 11 | | | | | | | | 22 | 5.2% |
| Crest View Elementary | (2) | (4) | 6 | 6 | 5 | 10 | | | | | | | | 21 | 8.6% |
| Edinbrook Elementary | 2 | 7 | 9 | 6 | 17 | 5 | | | | | | | | 46 | 7.0% |
| Elm Creek Elementary | 3 | (4) | 8 | (9) | 8 | (2) | | | | | | | | 4 | 0.8% |
| Fair Oaks Elementary | (2) | (6) | (2) | (3) | (2) | 4 | | | | | | | | (11) | -2.7% |
| Fernbrook Elementary | (25) | 2 | (9) | (7) | 4 | (11) | | | | | | | | (46) | -5.5% |
| Garden City Elementary | 0 | 11 | 4 | 5 | 7 | 6 | | | | | | | | 33 | 11.1% |
| Oak View Elementary | (4) | 0 | (13) | 1 | (6) | 0 | | | | | | | | (22) | -4.5% |
| Palmer Lake Elementary | 2 | 13 | 10 | 11 | 13 | 21 | | | | | | | | 70 | 16.1% |
| Park Brook Elementary | (5) | 11 | (3) | 0 | 2 | 0 | | | | | | | | 5 | 1.9% |
| Rice Lake Elementary | (8) | 8 | 7 | 3 | 7 | 9 | | | | | | | | 26 | 3.9% |
| Rush Creek Elementary | (24) | 0 | 0 | (7) | (14) | (6) | | | | | | | | (51) | -5.9% |
| Weaver Lake Elementary | (5) | 1 | 2 | 0 | 2 | 1 | | | | | | | | 1 | 0.2% |
| Woodland Elementary | 25 | (2) | 8 | 6 | 4 | 13 | | | | | | | | 54 | 8.0% |
| Zanewood Elementary | 9 | 16 | 6 | (3) | 4 | (5) | | | | | | | | 27 | 7.4% |
| Elementary School Total | (26) | 76 | 33 | 16 | 73 | 55 | | | | | | | | 227 | 2.5% |
| Brooklyn Middle | | | | | | | 51 | 16 | 18 | | | | | 85 | 9.1% |
| Maple Grove Middle | | | | | | | (13) | 1 | 8 | | | | | (4) | -0.2% |
| North View Middle | | | | | | | (11) | (21) | (19) | | | | | (51) | -7.2% |
| Osseo Middle | | | | | | | 24 | 30 | 3 | | | | | 57 | 5.8% |
| Middle School Total | | | | | | | 51 | 26 | 10 | | | | | 87 | 2.0% |
| Maple Grove Senior High | | | | | | | | | | (9) | (14) | 3 | (8) | (28) | -1.2% |
| Osseo Senior High | | | | | | | | | | (7) | (38) | (16) | (2) | (63) | -2.9% |
| Park Center Senior High | | | | | | | | | | 13 | (6) | (28) | (8) | (29) | -1.4% |
| Senior High School Total | | | | | | | | | | (3) | (58) | (41) | (18) | (120) | -1.8% |
| Subtotal | (26) | 76 | 33 | 16 | 73 | 55 | 51 | 26 | 10 | (3) | (58) | (41) | (18) | 194 | 1.0% |
| Osseo Sec Transition Ctr | | | | | | | | | | | | | 19 | 19 | 32.8% |
| Osseo Area Learning Ctr | | | | | | | | | | (2) | 7 | (1) | (7) | (3) | -1.9% |
| Achieve | | | | | | | (4) | 1 | 1 | 2 | (5) | (1) | (1) | (7) | -23.3% |
| Subtotal | | | | | | | (4) | 1 | 1 | 0 | 2 | (2) | 11 | 9 | 3.7% |
| Total Variance from Proj. | (26) | 76 | 33 | 16 | 73 | 55 | 47 | 27 | 11 | (3) | (56) | (43) | (7) | 203 | 1.0% |