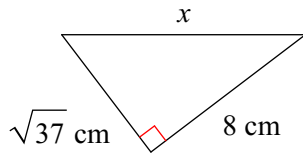


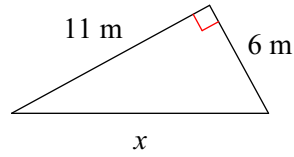
# Pythagorean Theorem

Find the missing side of each triangle. Leave your answers in simplest radical form.

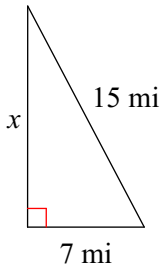
1)



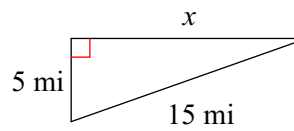
2)



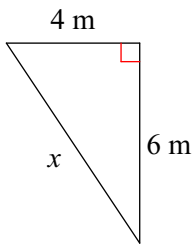
3)



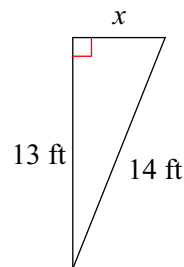
4)



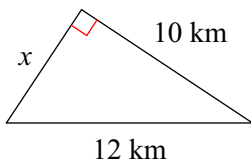
5)



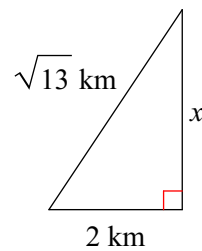
6)



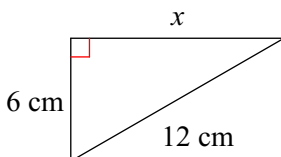
7)



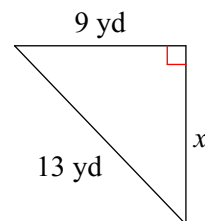
8)



9)



10)



## Answers to Pythagorean Theorem (ID: 1)

1)  $\sqrt{101}$  cm

5)  $2\sqrt{13}$  m

9)  $6\sqrt{3}$  cm

2)  $\sqrt{157}$  m

6)  $3\sqrt{3}$  ft

10)  $2\sqrt{22}$  yd

3)  $4\sqrt{11}$  mi

7)  $2\sqrt{11}$  km

4)  $10\sqrt{2}$  mi

8) 3 km