

LITERACY SCIENCE

- [Lesson Notes What are the parts of the heart?](#)
- [Worksheet 1 Circulatory System Vocabulary](#)
- [Worksheet 2 Label Your Heart](#)
- [Worksheet 3 FIB and T and F Circulatory System](#)
- [Worksheet 4 Go With the Flow](#)

INTRODUCTION TO BIOLOGY

Topic: Circulatory system

Standard- HS-LS1-2. Develop and use a model to illustrate the key functions of animal body systems, including (a) food digestion, nutrient uptake, and transport through the body; (b) exchange of oxygen and carbon dioxide; (c) removal of wastes; and (d) regulation of body processes

[Circulatory System game](#)

[Heart Labeling](#)

[Circulatory system worksheet](#)

[Anatomy of the heart](#)

[Circulatory System Reading](#)

[Circulatory System webquest](#)

BIOLOGY

Week of May 25-29

Topic- Digestive System

Standard- HS-LS1-2. Develop and use a model to illustrate the key functions of animal body systems, including (a) food digestion, nutrient uptake, and transport through the body; (b) exchange of oxygen and carbon dioxide; (c) removal of wastes; and (d) regulation of body processes

a. <u>Read this text</u>
b. <u>Read this other text</u> about the digestive system
c. <u>Study this study guide</u>
d. <u>Answer these online practice questions</u>
e. Watch these videos about the digestive system <u>Watch this TedTalk on the digestive system</u> <u>Watch this video</u>

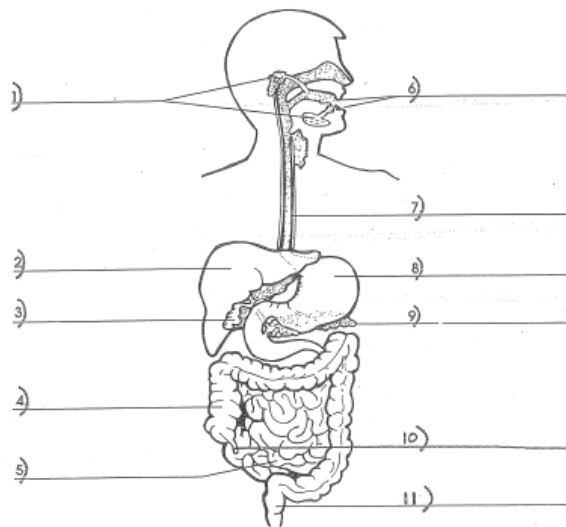
f. **Choose and answer 5** of the review questions after reading and watching the videos.

Review Questions (choose 5)

1. What organs make up the gastrointestinal tract?
2. What are the accessory organs of digestion?
3. Describe peristalsis and its role in digestion.
4. Define mechanical and chemical digestion.
5. What is amylase and what is its role?
6. Describe functions of the stomach.
7. What is pepsin? Where does it work? What is its role in digestion?
8. Which organ is responsible for the absorption of nutrients?
9. List two places in the gastrointestinal tract that are active in both mechanical and chemical digestion.

g. **Label** the following model of the digestive system in your notebook.

Use the words from the Word Bank to label the diagram of the digestive system.



Word Bank

salivary glands	stomach	gallbladder	mouth
pancreas	liver	rectum	large intestine
small intestine	esophagus	appendix	

h. **Try these online activities**

[Online labeling game](#)

[Online practice quiz](#)

[Digestion animation](#)

Optional - Watch this [The Magic School Bus For Lunch Video](#) and use it as inspiration to write your own description of the path of food in your body.

Topic: **Mendelian inheritance patterns**

Standard: HS-LS3-3. Apply concepts of probability to represent possible genotype and phenotype combinations in offspring caused by different types of Mendelian inheritance patterns.

Part 2: Use the **Punnett Squares** and **probabilities** to predict the results of monohybrid and dihybrid genetic crosses in Mendelian Genetics.

a. [Interactive activity to review Mendel's Laws of Genetics and the Punnett Square](#)

b. Mendel's Pet Ranch

In this game, you are in control of a pet breeding business at Mendel's Pet Ranch. You will explore how inheritance and dominance work with **Punnett squares** while trying to breed offspring with specific characteristics. You will need to breed pets that are exact copies of what your customers ask for. Some challenges will involve multiple steps before you can complete your customer's order.

[Interactive activity: Mendel's Pet Ranch](#)

c. Battle Genetics

You will learn about variation of inherited traits by breeding monsters to have specific traits. In order to do this, you will select parents according to their traits, which will generate **a Punnett Square predicting the various possible offspring**. You will then have to select the offspring that matches the desired traits. Each level will require you to create different traits. Complete all the levels to win.

[Interactive activity: Battle Genetics](#)

d. The Punnett Machine

In this game, you are a farmer trying to create seeds for your fields. Using a "**Punnet Square**" machine you will create specific seeds needed for each field. To create the seeds, you will need to carefully cross the correct parent genetic types with one another. Once your field is planted, it will also need water. To water the field, you will need to answer multiple-choice questions correctly.

[Interactive activity: The Punnett Machine](#)

e. Mr. P AND THE INHERITANCE OF TRAITS

In this game, help Mr. P make a baby. You will be reviewing and answering quiz questions about heredity and pedigrees. You will do a vocabulary review, practice filling in a **Punnett square**, and figure out the **probabilities for both the genotypes and phenotypes** of the offspring. Answer the questions to all 4 levels and earn enough "proteins" to build together a little bundle of joy.

[Interactive activity: Mr. P and The Inheritance of Traits.](#)

MCAS BIO REVIEW

Week of May 25-29

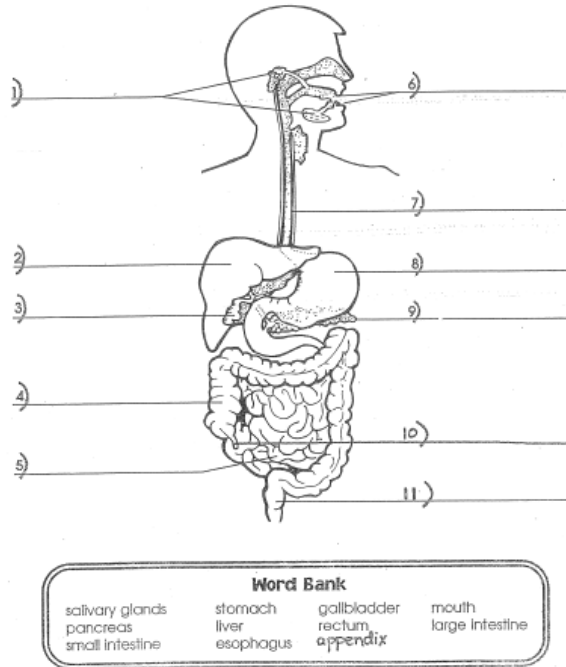
Topic- Digestive System

Standard- HS-LS1-2. Develop and use a model to illustrate the key functions of animal body systems, including (a) food digestion, nutrient uptake, and transport through the body; (b) exchange of oxygen and carbon dioxide; (c) removal of wastes; and (d) regulation of body processes

i. Read this text
j. Read this other text about the digestive system
k. Study this study guide
l. Answer these online practice questions
m. Watch these videos about the digestive system Watch this TedTalk on the digestive system Watch this video
n. Choose and answer 5 of the review questions after reading and watching the videos. Review Questions (choose 5) 10. What organs make up the gastrointestinal tract? 11. What are the accessory organs of digestion? 12. Describe peristalsis and its role in digestion. 13. Define mechanical and chemical digestion. 14. What is amylase and what is its role? 15. Describe functions of the stomach. 16. What is pepsin? Where does it work? What is its role in digestion? 17. Which organ is responsible for the absorption of nutrients? 18. List two places in the gastrointestinal tract that are active in both mechanical and chemical digestion.

o. Label the following model of the digestive system in your notebook.

Use the words from the Word Bank to label the diagram of the digestive system.



p. Try these online activities

[Online labeling game](#)

[Online practice quiz](#)

[Digestion animation](#)

Optional - Watch this [The Magic School Bus For Lunch Video](#) and use it as inspiration to write your own description of the path of food in your body.

CHEMISTRY

PS1. Matter and Its Interactions: HS-PS1-3.

- [LESSON Notes_Ionic Bonding and Salts Edmodo](#)
- [Worksheet 1 Guided Reading Ionic Bonding and Salts](#)
- [Worksheet 2 Concept Review_Ionic Bonding and Salts](#)