

IN A NEW YORK MINUTE

Elapsed Time

SCOOT

*Created By
Rebecca Harms
Ms. 1 In Texas*

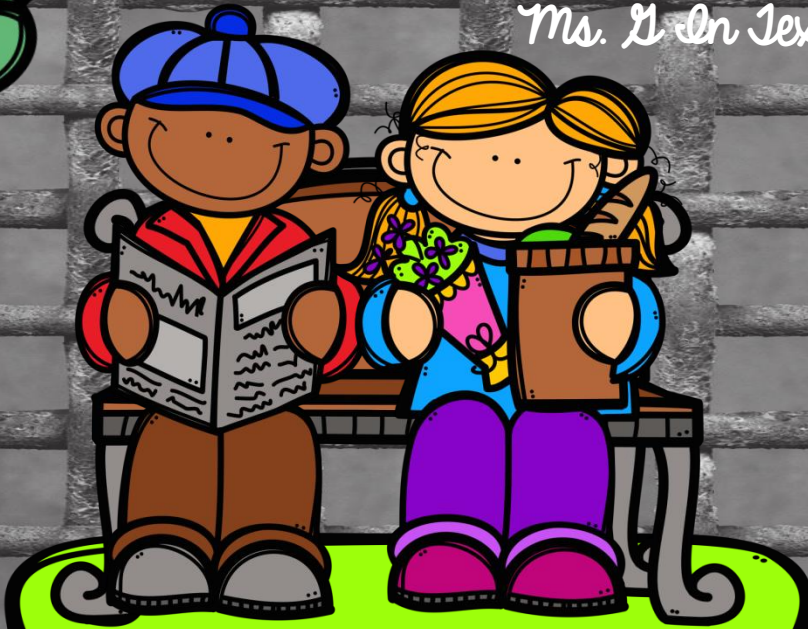


TABLE OF CONTENTS

Pages 3-9	Scoot Directions and Task Cards
Pages 10	Task Card Sized Cover, Directions and Answer Key
Pages 11-14	Scoot Recording Sheets- 2 options
Pages 15-18	Recording Sheets for Task Cards- 2 options
Page 19	Answer Key
Pages 20-21	Thank you and Credits

Scoot

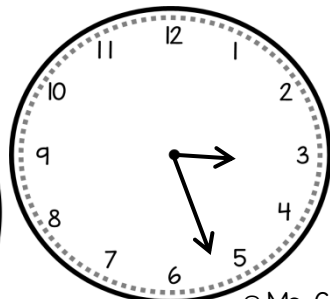
DIRECTIONS



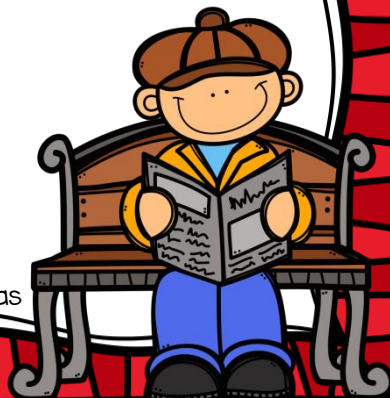
1. "Scoot" around the room, with your response sheet, to each card.
2. Write the equation. Solve.
3. Record your answer for each card.

James looked at this clock and knew that recess would start in 23 minutes. What time does recess start?

1

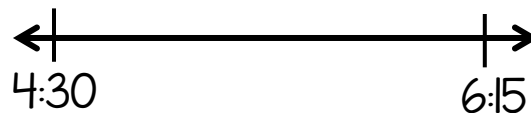


© Ms. G In Texas



2

Brooke has gymnastics from 4:30 p.m. until 6:15 p.m.. How long is Brooke at gymnastics for? Use the number line to solve.



© Ms. G In Texas

3

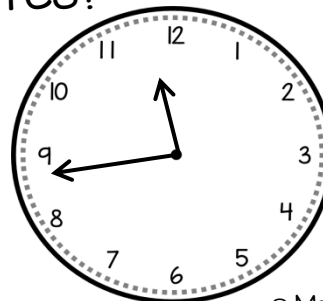
It takes Paul 7 minutes to walk to his bus stop. What time does he need leave his house to get to the bus stop at 7:05?



© Ms. G In Texas

4

What time will it be in 1 hour and 36 minutes?



© Ms. G In Texas

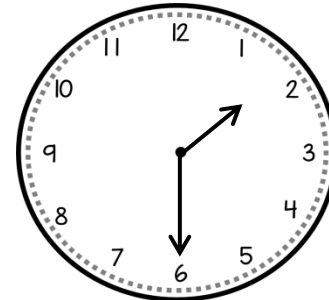


5 Sophia put a pepperoni pizza in the oven at 11:47. It has to cook for 23 minutes. What time will Sophia's pizza be ready to take out of the oven?



© Ms. G In Texas

6 What time was it 47 minutes ago?

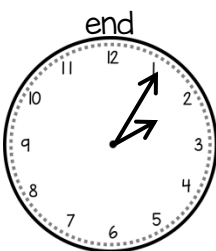
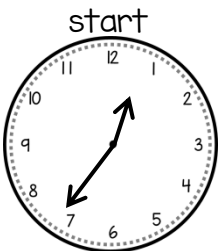


© Ms. G In Texas



Blake is going to see a movie that starts at 12:37 and ends at 2:05. How long is the movie?

7

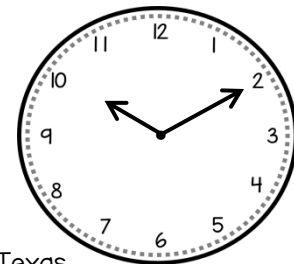
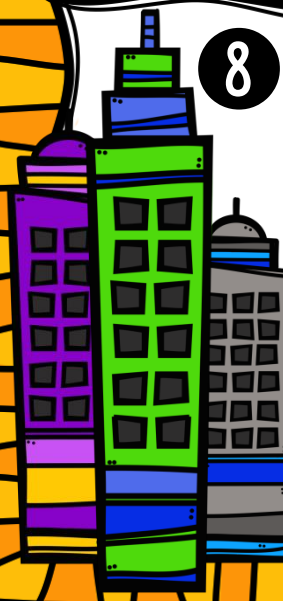


© Ms. G In Texas



8

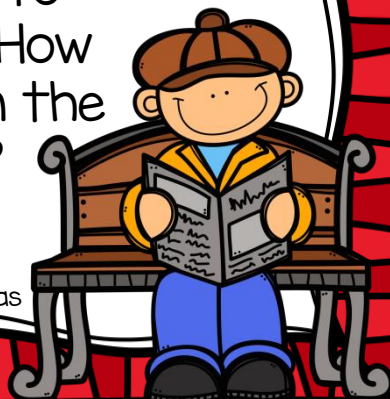
Adaline has to be home in 1 hour and 5 minutes. What time does she have to be home?



© Ms. G In Texas

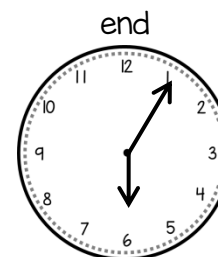
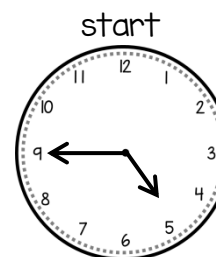
On school days, Shelby gets on the bus at 7:24. She gets to school at 8:02. How long is Shelby on the school bus?

9



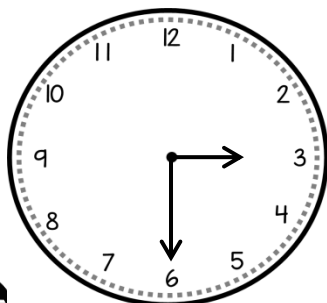
© Ms. G In Texas

10 Carson went outside to play at 4:45. He went inside for dinner at 6:05. How long was he outside?



© Ms. G In Texas

11 What time will it be in 2 hours and 35 minutes?

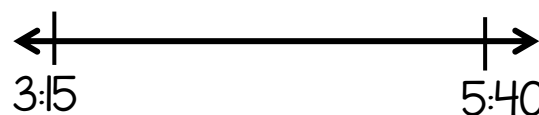


© Ms. G In Texas



Rachel starts her piano lessons at 3:15. Her lesson is over with at 5:40. How long does Rachel play for? Use the number line to solve.

12



© Ms. G In Texas



13 Natalie is going to visit her grandma. It takes her 2 hours and 20 minutes to get to her grandmas house. If she wants to arrive at her grandmas house at 10:00, what time does she need to leave?

© Ms. G In Texas



14 Cade has baseball practice at 5:15. Practice is 1 and a half hours long. What time does baseball practice end?

© Ms. G In Texas



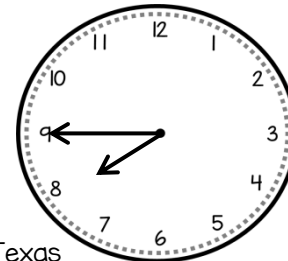
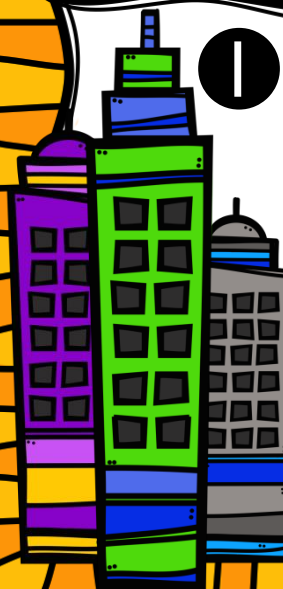
15 It takes Alonzo 43 minutes to get to his aunts house. If he leaves his house at 2:20, what time will he arrive at his aunts house?

© Ms. G In Texas



16 Nadine has to be at work in 25 minutes. What time does she have to be at work?

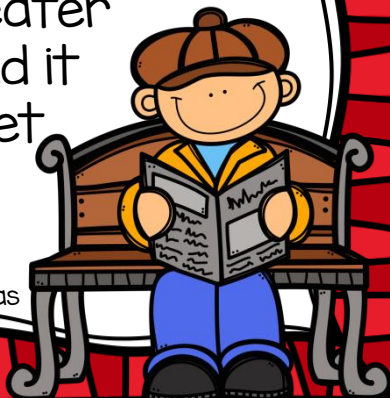
© Ms. G In Texas



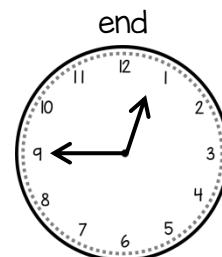
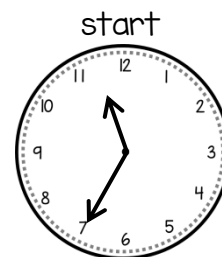
Kirbie is going to see a movie. She left her house at 12:37 and arrived at the theater at 1:15. How long did it take Kirbie to get to the movie theater?

17

© Ms. G In Texas

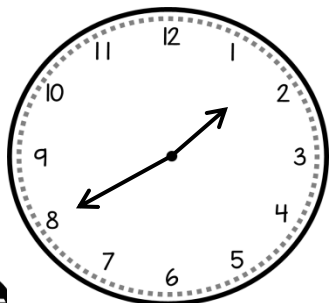


18 Kylie went to lunch at 11:35. She returned at 12:45. How long was she at lunch?



© Ms. G In Texas

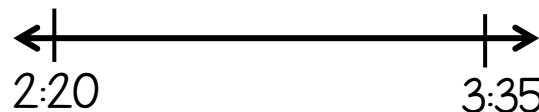
19 What time will it be in 1 hour and 15 minutes?



© Ms. G In Texas



20 Jaskson went to the playground at 2:20 and left at 3:35. How long was Jackson at the playground? Use the number line to solve.



© Ms. G In Texas

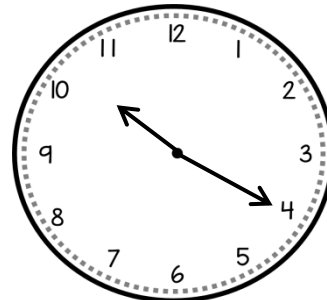


21 Jeff is flying to Orlando for a trip to Disney World. The airplane leave at 8:05 and arrives at 11:12. How long is Jeff on the airplane for?



© Ms. G In Texas

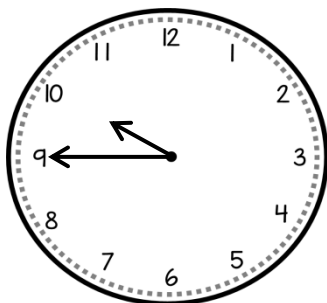
What time was is 53 **22** minutes ago?



© Ms. G In Texas



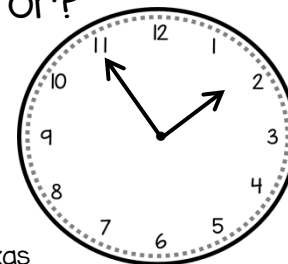
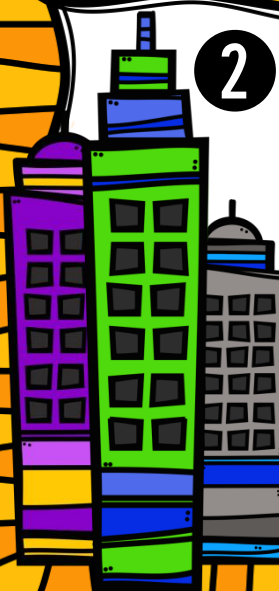
What time will it be in **23** 3 hours and 17 minutes?



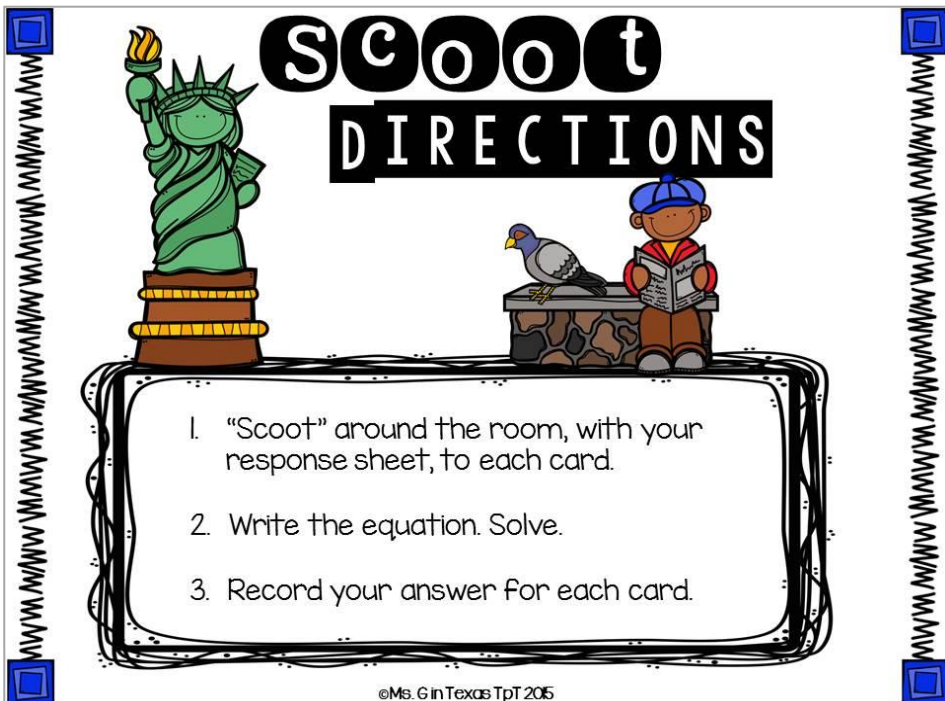
© Ms. G In Texas



24 Kim has to be at the doctor in 25 minutes. What time does she have to be at the doctor?



© Ms. G In Texas



IN A NEW YORK MINUTE

Name **Answer Key** Date _____

1 3:49	2 1 hour and 45 minutes	3 6:58
4 1:15	5 12:10	6 12:43
7 1 hour and 28 minutes	8 11:15	9 38 minutes
10 1 hour and 20 minutes	11 6:05	12 2 hours and 25 minutes

© 2015 Ms. 6 In Texas

IN A NEW YORK MINUTE

Answer Key

13 7:40	14 6:45	15 3:03
16 8:10	17 38 minutes	18 1 hour and 10 minutes
19 2:55	20 1 hour and 15 minutes	21 3 hours and 7 minutes
22 9:27	23 2:02	24 2:20

© 2014 Ms. 6 In Texas

IN A NEW YORK MINUTE Scoot



Name _____ Date _____



1 ←————→	2 ←————→	3 ←————→
4 ←————→	5 ←————→	6 ←————→
7 ←————→	8 ←————→	9 ←————→
10 ←————→	11 ←————→	12 ←————→

IN A NEW YORK MINUTE Scoot



1 3 ←————→	1 4 ←————→	1 5 ←————→
1 6 ←————→	1 7 ←————→	1 8 ←————→
1 9 ←————→	2 0 ←————→	2 1 ←————→
2 2 ←————→	2 3 ←————→	2 4 ←————→



IN A NEW YORK MINUTE Scoot



Name _____ Date _____

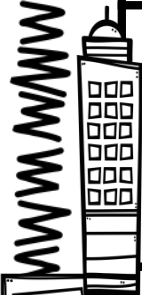


1	2	3
4	5	6
7	8	9
10	11	12

IN A NEW YORK MINUTE Scoot



1 3	1 4	1 5
1 6	1 7	1 8
1 9	2 0	2 1
2 2	2 3	2 4



IN A NEW YORK MINUTE



Name _____ Date _____



1 ←————→	2 ←————→	3 ←————→
4 ←————→	5 ←————→	6 ←————→
7 ←————→	8 ←————→	9 ←————→
10 ←————→	11 ←————→	12 ←————→

IN A NEW YORK MINUTE



1 3 ←————→	1 4 ←————→	1 5 ←————→
1 6 ←————→	1 7 ←————→	1 8 ←————→
1 9 ←————→	2 0 ←————→	2 1 ←————→
2 2 ←————→	2 3 ←————→	2 4 ←————→



IN A NEW YORK MINUTE



Name _____ Date _____

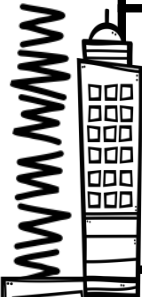


1	2	3
4	5	6
7	8	9
10	11	12

IN A NEW YORK MINUTE



1 3	1 4	1 5
1 6	1 7	1 8
1 9	2 0	2 1
2 2	2 3	2 4



IN A NEW YORK MINUTE



Name Answer Key Date _____



1 3:49	2 1 hour and 45 minutes	3 6:58
4 1:15	5 12:10	6 12:43
7 1 hour and 28 minutes	8 11:15	9 38 minutes
10 1 hour and 20 minutes	11 6:05	12 2 hours and 25 minutes

IN A NEW YORK MINUTE

Answer Key



13 7:40	14 6:45	15 3:03
16 8:10	17 38 minutes	18 1 hour and 10 minutes
19 2:55	20 1 hour and 15 minutes	21 3 hours and 7 minutes
22 9:27	23 2:02	24 2:20

THANK YOU FOR YOUR PURCHASE!

I hope you and your students LOVE this resource as much as I have LOVED making it! Please remember that this product is licensed for SINGLE classroom use. Please do not redistribute to friends or colleagues as it violates copyright law! If your colleagues like what they see, please send them to my store, OR you can purchase an additional license for this product at half-price! Thank you for respecting my hard work, as well as the artists' whose hard work I've used to create this product.

*-Rebecca Garms
Ms. G In Texas*

Fonts and Graphics By

