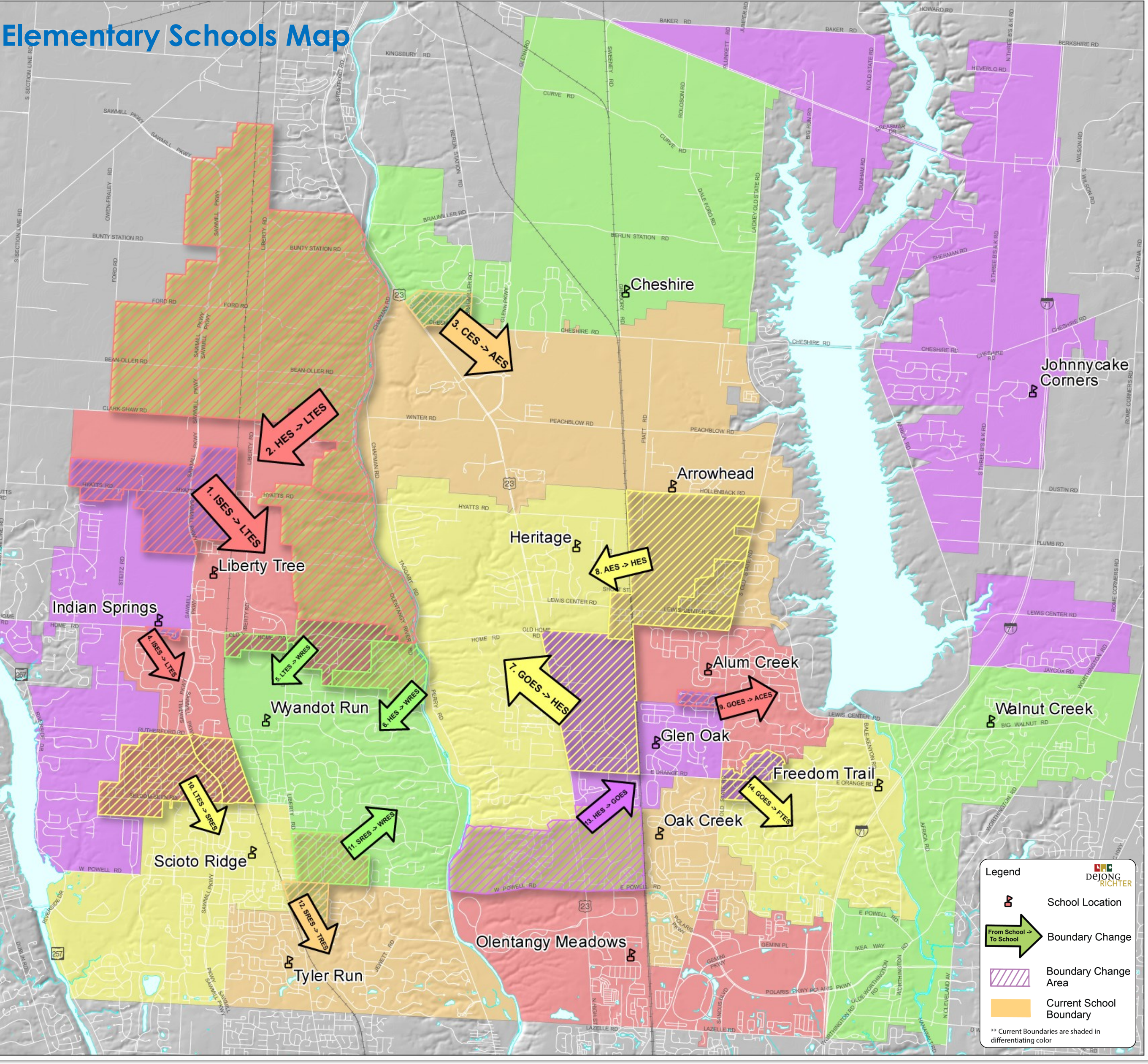


Scenario A

Elementary Schools Map



Elementary Schools

This map shows the current elementary school boundaries in differentiating shades of color. Areas that are proposed to change schools are denoted by a cross-hatch and an arrow indicating a change area number along with "from schools" and "to schools." The table to the right shows the resulting utilization at each facility for the proposed changes.

This scenario would impact 1,106 students (current K-5th graders). Enrollment and utilization figures are based on the current student population. Areas of potential growth and decline were taken into consideration as scenarios were developed.

The table below outlines the change areas and associated subdivisions.

Change Area #	From School	To School	Current Subdivisions	Future Subdivisions
1	Indian Springs	Liberty Tree		Heather Ridge Woodcrest Cross (south)
2	Heritage	Liberty Tree	Kesselbrooke Station Nelson Farms Timber Lake	
3	Cheshire	Arrowhead	Cheshire Crossing (north)	
4	Indian Springs	Liberty Tree	Palisades at Golf Village (portion)	
5	Liberty Tree	Wyandot Run	Bridlespur	
6	Heritage	Wyandot Run	Trail's End	Allington Estates
7	Glen Oak	Heritage		Slate Ridge
8	Arrowhead	Heritage	Meadows at Lewis Center Bryn Mawr	Evans Farms (south of Hollenback)
9	Glen Oak	Alum Creek	Alum Crossing	
10	Liberty Tree	Scioto Ridge	Woods at Seldom Seen Preserve at Seldom Seen Golf Village (Sec. 1) Golf Village - Stone Bridge Golf Village Woods Golf Village Rutherford Golf Village Reserve Rutherford Estates	
11	Scioto Ridge	Wyandot Run	Olentangy Ridge	
12	Scioto Ridge	Tyler Run	Bartholomew Run	
13	Heritage	Glen Oak	Green Meadows Highmeadows Village Foxridge Sycamore Meadows Burn Brae	
14	Glen Oak	Freedom Trail	Cross Creek Woods at Cross Creek	

Elementary Schools	Capacity	Enrollment (2016-17)	Utilization (2016-17)
Alum Creek	675	590	87%
Arrowhead	650	568	87%
Cheshire	650	512	79%
Freedom Trail	650	709	109%
Glen Oak	650	632	97%
Heritage	650	460	71%
Indian Springs	650	584	90%
Johnnycake Corners	650	601	92%
Liberty Tree	650	544	84%
Oak Creek	650	656	101%
Olentangy Meadows	650	658	101%
Scioto Ridge	650	583	90%
Tyler Run	650	598	92%
Walnut Creek	650	605	93%
Wyandot Run	675	672	100%

Middle Schools

This map shows the current middle school boundaries in differentiating shades of color. Areas that are proposed to change schools are denoted by a cross-hatch and an arrow indicating a change area number along with "from schools" and "to schools." The table to the right shows the resulting utilization at each facility for the proposed changes.

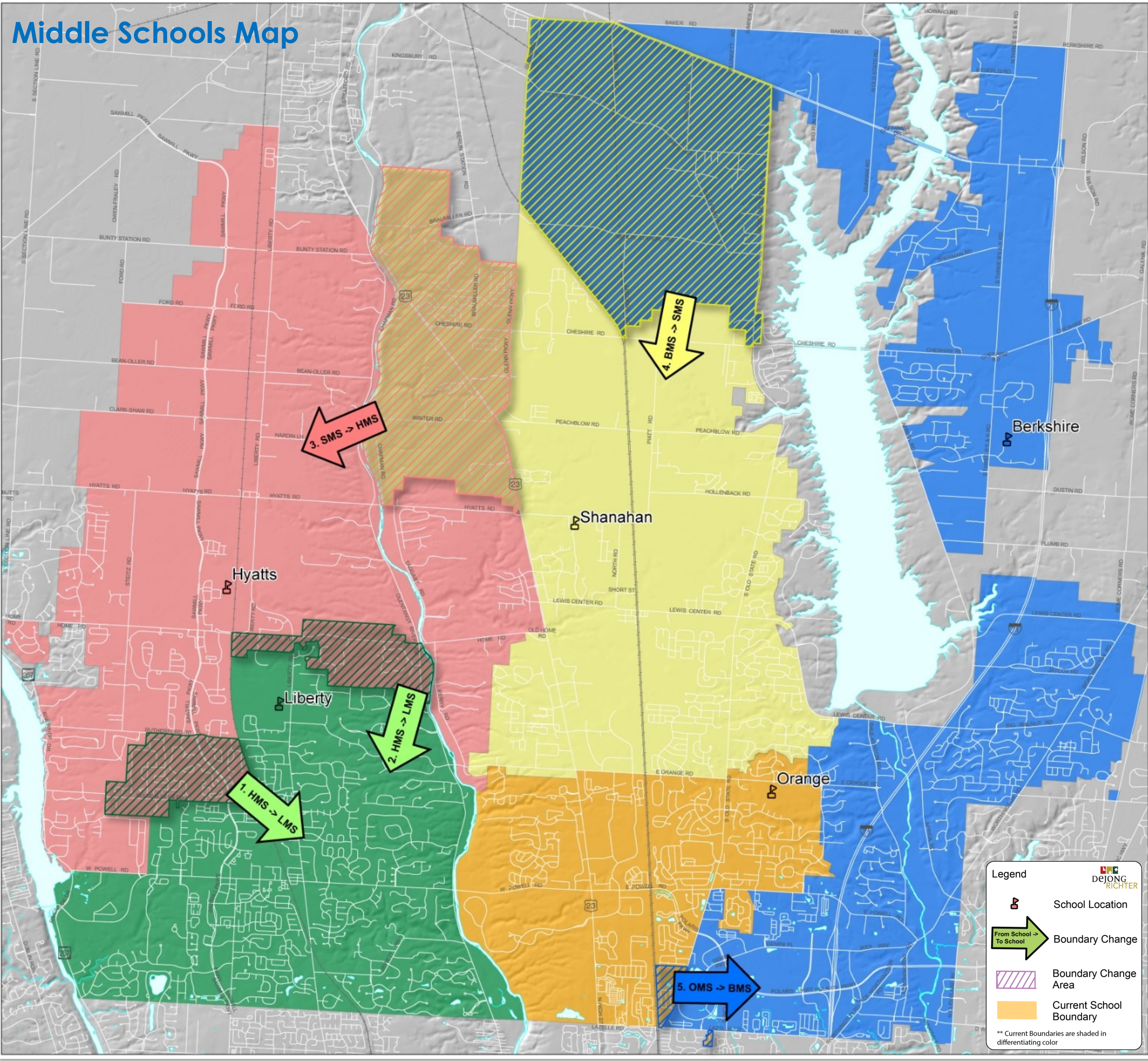
This scenario would impact 901 students (current 4th—6th graders). Enrollment and utilization figures are based on grade advancing the current student population. Areas of potential growth and decline were taken into consideration as scenarios were developed.

The table below outlines the change areas and associated subdivisions.

Middle Schools	Capacity	Enrollment (2018-19)	Utilization (2018-19)
Berkshire	1,050	995	95%
Hyatts	1,050	951	91%
Liberty	1,000	1,028	103%
Orange	1,000	903	90%
Shanahan	1,100	955	87%

Change Area #	From School	To School	Current Subdivisions	Future Subdivisions
1	Hyatts	Liberty	Woods at Seldom Seen Preserve at Seldom Seen Golf Village (Sec. 1) Golf Village - Stone Bridge Golf Village Woods Golf Village Rutherford Golf Village Reserve Rutherford Estates	
2	Hyatts	Liberty	Bridlespur Trail's End	Allington Estates
3	Shanahan	Hyatts	Cheshire Crossing (north and south) Lakes at Cheshire Dornoch Estates Braunmiller Woods Estates at Braunmiller Dornoch Estates Woods of Dornoch Methesco	Stockdale Estates at Braunmiller (final phase)
4	Berkshire	Shanahan	Bainbridge Ravines Winding Creek Estates Hidden Meadows Whispering Creek	Glenmead
5	Orange	Berkshire	Olentangy Glade Italia Court	

Middle Schools Map



High Schools

This map shows the current high school boundaries in differentiating shades of color. Areas that are proposed to change schools are denoted by a cross-hatch and an arrow indicating a change area number along with "from schools" and "to schools." The table to the right shows the resulting utilization at each facility for the proposed changes.

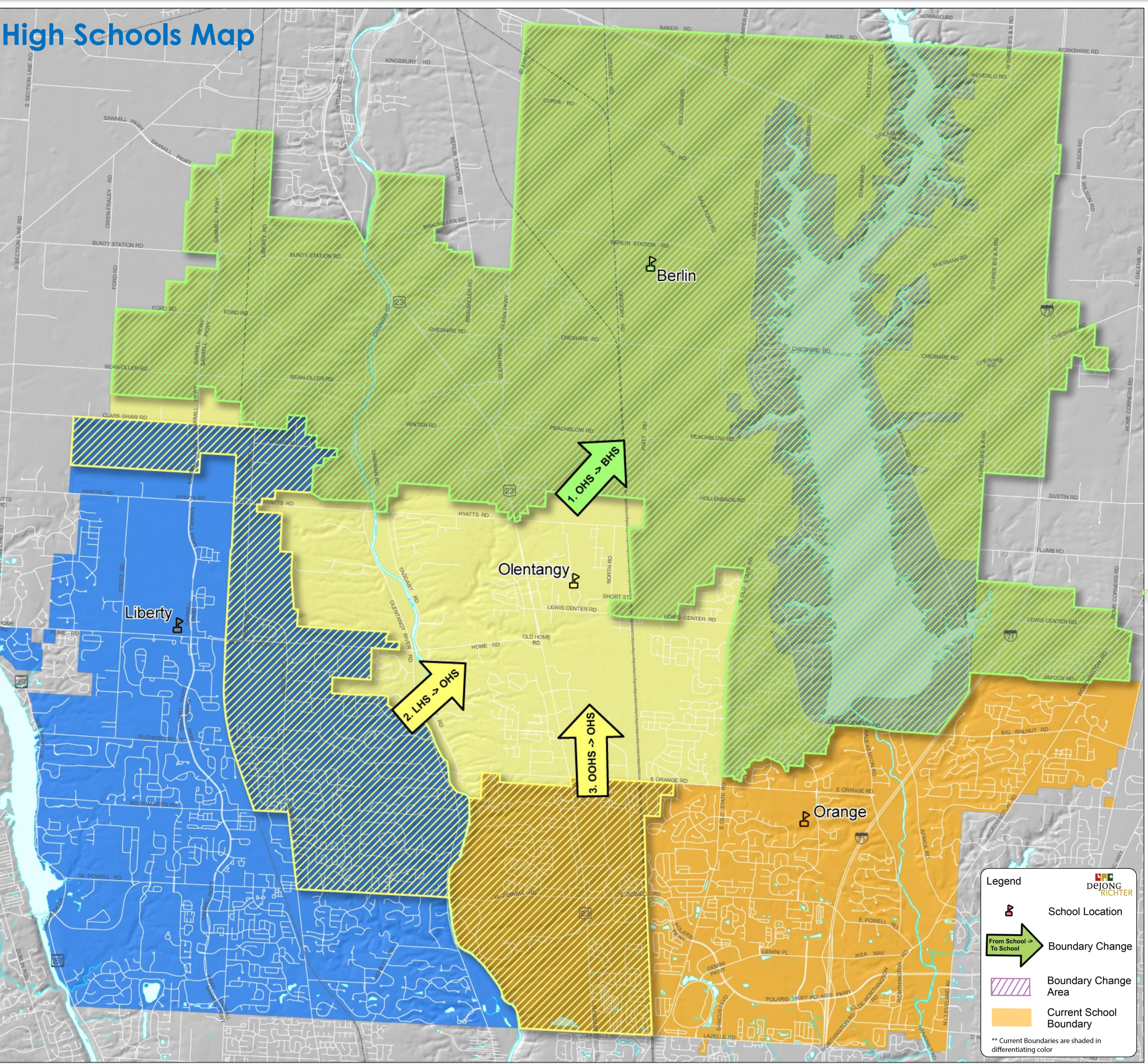
This scenario would impact 1,852 students (current 7th-9th graders). Enrollment and utilization figures are based on grade advancing the current student population. Estimated enrollment figures for 2018-19 reflect only 9th-11th grades at Berlin High School and that 12th grades (current 10th graders) will remain at their current high school. Estimated enrollment figures for 2019-20 reflect full implementation. Areas of potential growth and decline were taken into consideration as scenarios were developed.

The table below outlines the change areas and associated subdivisions.

High Schools	Capacity	Enrollment (2018-19)	Utilization (2018-19)
Berlin	1,800	1,124	62%
Liberty	1,800	1,877	104%
Olentangy	1,800	1,734	96%
Orange	1,800	1,772	98%

High Schools	Capacity	Enrollment (2019-20)	Utilization (2019-20)
Berlin	1,800	1,509	84%
Liberty	1,800	1,742	97%
Olentangy	1,800	1,661	92%
Orange	1,800	1,734	96%

High Schools Map

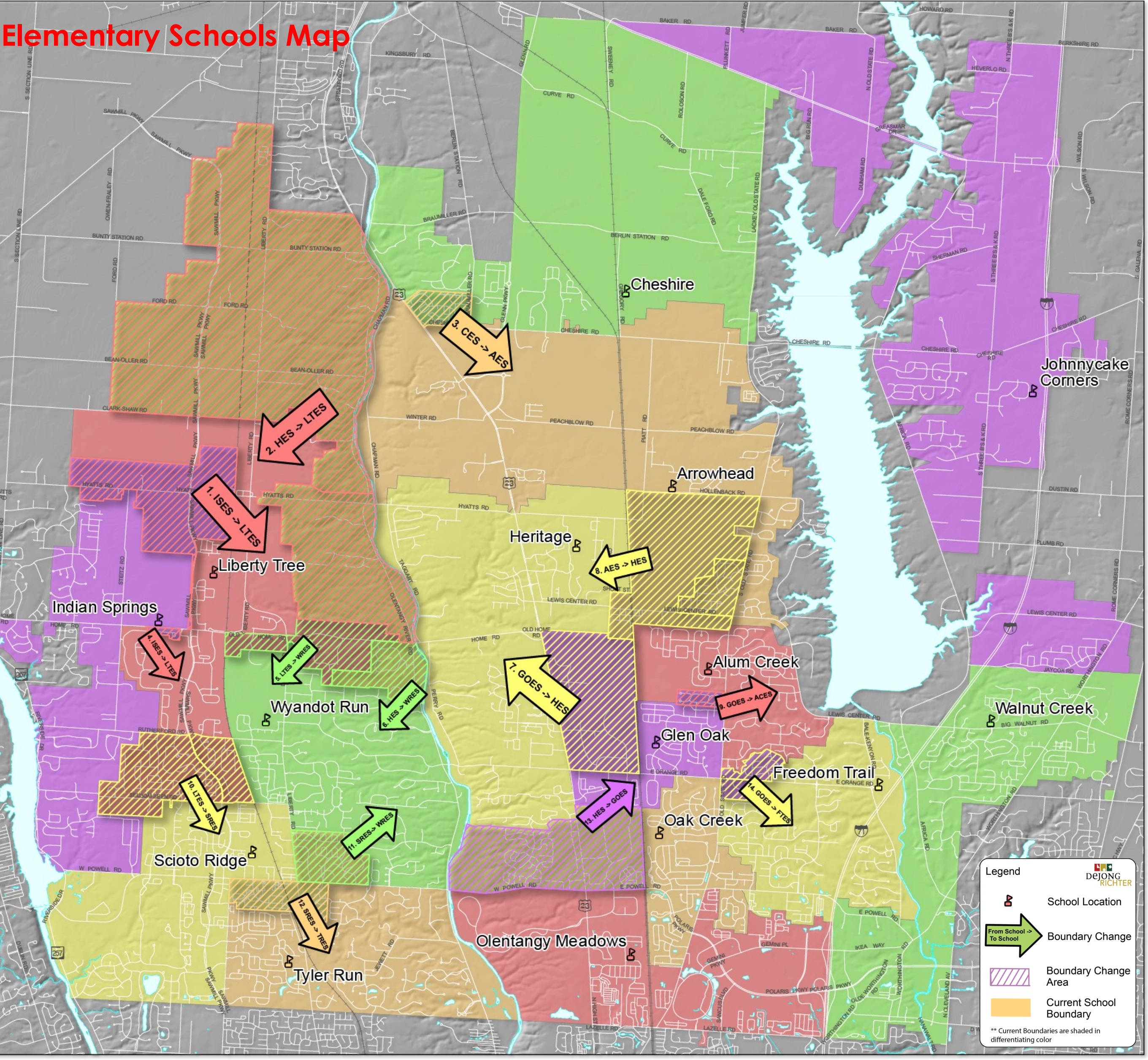


Change Area #	From School	To School	Current Subdivisions	Future Subdivisions
1	Olentangy	Berlin	Abbey Knoll Arbors of Cheshire Avonlea Bainbridge Ravines Bainmiller Place Braunmiller Woods Cheshire Cove Cheshire Crossing (North & South) Cheshire Woods Cheshire Woods Estates Dornoch Estates Enclave at Glenross Estates at Braunmiller (the)	Estates of Sherman Lakes (the) Harbor Pointe Hidden Cove Hidden Creek Hidden Creek Estates Hidden Meadows Kesselbrooke Station Lake Shore Lakes at Cheshire Landings at Glenross Malabar Marina at Alum Creek Marisol
2	Liberty	Olentangy	Ashmore Bridlespur Canterbury Chambers Glen Courtyards of Powell The Chase Davenport Park Deseret Hardin Woods Lakes at Silverleaf Liberty Ridge	Liberty Trace (Current and Future) Middlebury Estates Olentangy Ridge Powell Place Quail Meadows The Retreat Sherbourne Mews The Village of Powell Westchester Wingate Farms The Woods of Powell
3	Orange	Olentangy	Burn Brae Deep Run at Riverbend Doeley's Orchard Foxridge Greenmeadows Hidden Ravines Hidden Reserve Hidden Springs Highmeadows Village Lakes of Olentangy Mirada Apartments Northpoint Meadows	Olentangy Meadows Remington Apartments Riverbend Sycamore Meadows Village of Olentangy Villas at Riverbend Woods of Olentangy

Change Area #	From School	To School	Current Subdivisions	Future Subdivisions
1	Olentangy	Berlin	Abbey Knoll Arbors of Cheshire Avonlea Bainbridge Ravines Bainmiller Place Braunmiller Woods Cheshire Cove Cheshire Crossing (North & South) Cheshire Woods Cheshire Woods Estates Dornoch Estates Enclave at Glenross Estates at Braunmiller (the)	Estates of Sherman Lakes (the) Harbor Pointe Hidden Cove Hidden Creek Hidden Creek Estates Hidden Meadows Kesselbrooke Station Lake Shore Lakes at Cheshire Landings at Glenross Malabar Marina at Alum Creek Marisol
2	Liberty	Olentangy	Ashmore Bridlespur Canterbury Chambers Glen Courtyards of Powell The Chase Davenport Park Deseret Hardin Woods Lakes at Silverleaf Liberty Ridge	Liberty Trace (Current and Future) Middlebury Estates Olentangy Ridge Powell Place Quail Meadows The Retreat Sherbourne Mews The Village of Powell Westchester Wingate Farms The Woods of Powell
3	Orange	Olentangy	Burn Brae Deep Run at Riverbend Doeley's Orchard Foxridge Greenmeadows Hidden Ravines Hidden Reserve Hidden Springs Highmeadows Village Lakes of Olentangy Mirada Apartments Northpoint Meadows	Olentangy Meadows Remington Apartments Riverbend Sycamore Meadows Village of Olentangy Villas at Riverbend Woods of Olentangy

Scenario B

Elementary Schools Map



Elementary Schools

This map shows the current elementary school boundaries in differentiating shades of color. Areas that are proposed to change schools are denoted by a cross-hatch and an arrow indicating a change area number along with "from schools" and "to schools." The table to the right shows the resulting utilization at each facility for the proposed changes.

This scenario would impact 1,166 students (current K-5th graders). Enrollment and utilization figures are based on the current student population. Areas of potential growth and decline were taken into consideration as scenarios were developed.

The table below outlines the change areas and associated subdivisions.

Change Area #	From School	To School	Current Subdivisions	Future Subdivisions
1	Indian Springs	Liberty Tree		Heather Ridge Woodcrest Cross (south)
2	Heritage	Liberty Tree	Kesselbrooke Station Nelson Farms Timber Lake	
3	Cheshire	Arrowhead	Cheshire Crossing (north)	
4	Indian Springs	Liberty Tree	Palisades at Golf Village (portion)	
5	Liberty Tree	Wyandot Run	Bridlespur	
6	Heritage	Wyandot Run	Trail's End	Allington Estates
7	Glen Oak	Heritage		Slate Ridge
8	Arrowhead	Heritage	Meadows at Lewis Center Bryn Mawr	Evans Farms (south of Hollenback)
9	Glen Oak	Alum Creek	Alum Crossing	
10	Liberty Tree	Scioto Ridge	Woods at Seldom Seen Preserve at Seldom Seen Golf Village (Sec. 1) Golf Village - Stone Bridge Golf Village Woods Golf Village Rutherford Golf Village Reserve Rutherford Estates	
11	Scioto Ridge	Wyandot Run	Olentangy Ridge	
12	Scioto Ridge	Tyler Run	Bartholomew Run Murphy's Park Murphy's Crossing Condo Village at Murphy Park	
13	Heritage	Glen Oak	Green Meadows Highmeadows Village Foxridge Sycamore Meadows Burn Brae	
14	Glen Oak	Freedom Trail	Cross Creek Woods at Cross Creek	

Elementary Schools	Capacity	Enrollment (2016-17)	Utilization (2016-17)
Alum Creek	675	590	87%
Arrowhead	650	568	87%
Cheshire	650	512	79%
Freedom Trail	650	709	109%
Glen Oak	650	632	97%
Heritage	650	460	71%
Indian Springs	650	584	90%
Johnnycake Corners	650	601	92%
Liberty Tree	650	544	84%
Oak Creek	650	656	101%
Olentangy Meadows	650	658	101%
Scioto Ridge	650	523	80%
Tyler Run	650	658	101%
Walnut Creek	650	605	93%
Wyandot Run	675	672	100%

Middle Schools

This map shows the current middle school boundaries in differentiating shades of color. Areas that are proposed to change schools are denoted by a cross-hatch and an arrow indicating a change area number along with "from schools" and "to schools." The table to the right shows the resulting utilization at each facility for the proposed changes.

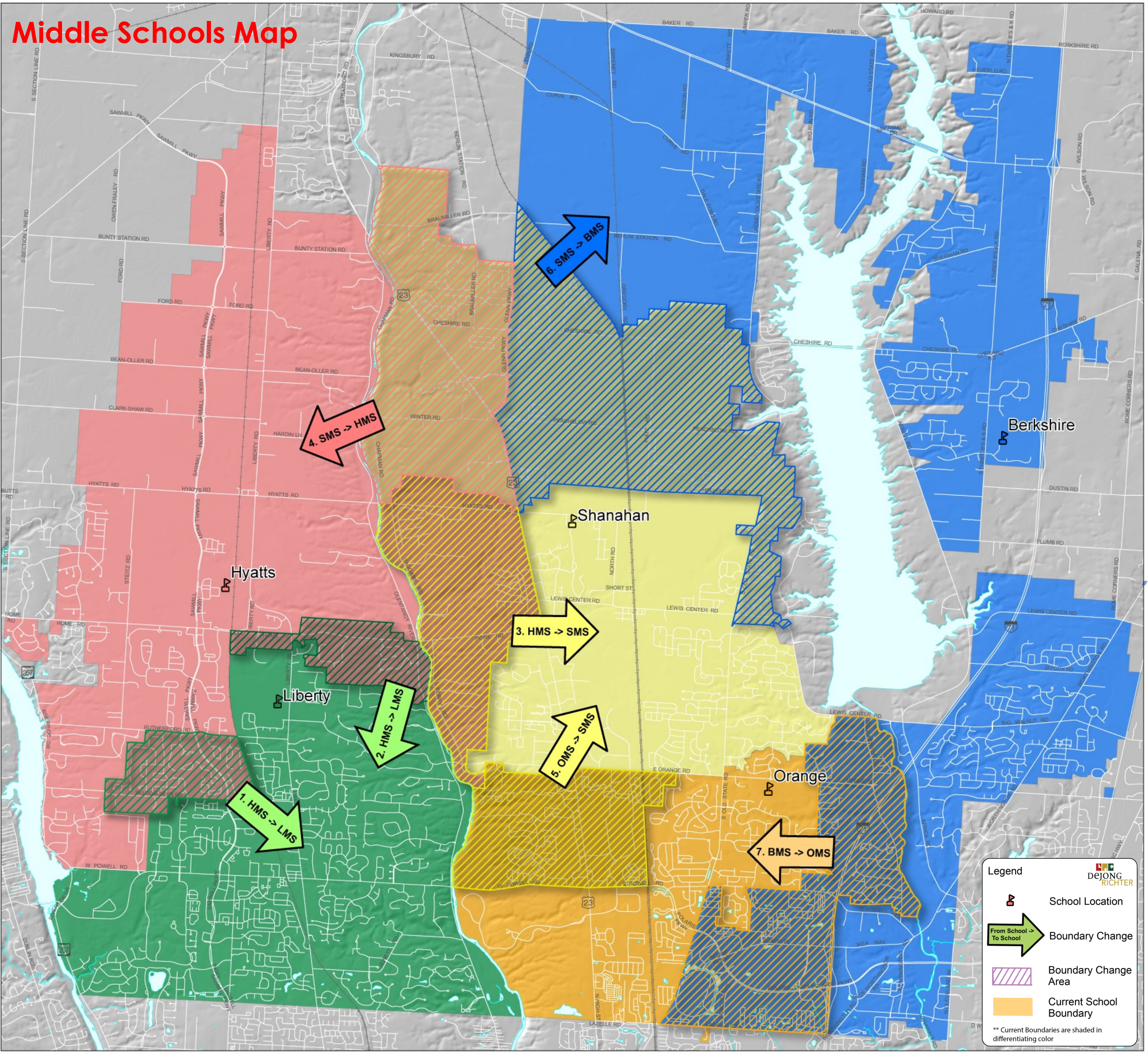
This scenario would impact 1,152 students (current 4th—6th graders). Enrollment and utilization figures are based on grade advancing the current student population. Areas of potential growth and decline were taken into consideration as scenarios were developed.

The table below outlines the change areas and associated subdivisions.

Change Area #	From School	To School	Current Subdivisions	Future Subdivisions
1	Hyatts	Liberty	Woods of Seldom Seen Preserve at Seldom Seen Golf Village (Sec. 1) Golf Village - Stone Bridge Golf Village Woods Golf Village Rutherford Golf Village Reserve Rutherford Estates	
2	Hyatts	Liberty	Bridlespur Trail's End	Allington Estates
3	Hyatts	Shanahan	The Hatch Olentangy Crossing (west) Olentangy Falls	Olentangy Falls (expansion)
4	Shanahan	Hyatts	Cheshire Crossing (north and south) Lakes of Cheshire Donnoch Estates Brauniller Woods Estates at Brauniller Woods of Donnoch Mathiesco	Stockdale Estates at Brauniller (final phase)
5	Orange	Shanahan	Burn Brae Deep Run at Riverbend Dooley's Orchard Township Green Meadows Hidden Ravines Hidden Reserve Hidden Springs	Highmeadows Village Northpoint Meadows Riverbend Sycamore Meadows Villas at Riverbend (condos)
6	Shanahan	Berkshire	Avonlea Brentwood Place Cheshire Cove Enclosure at Glenross Hidden Cove Landings at Glenross Marina at Glenross Old Harbor Estates	Communities at Glenross (south) Glenross (north)
7	Berkshire	Orange	801 Polaris Apartments Anasos Park Apartments Avenue of Polaris Bale Kenyon Bluffs The Gardens of Polaris Lakes at Polaris McComan Chase McComan Estates	Nicoya Northpark Place Polaris Grand Polaris Green Polaris View Preswick Green Retreat at Polaris River's Edge at Alum Creek

Middle Schools	Capacity	Enrollment (2018-19)	Utilization (2018-19)
Berkshire	1,050	996	95%
Hyatts	1,050	875	83%
Liberty	1,000	1,028	103%
Orange	1,000	1,038	104%
Shanahan	1,100	895	81%

Middle Schools Map



High Schools

This map shows the current high school boundaries in differentiating shades of color. Areas that are proposed to change schools are denoted by a cross-hatch and an arrow indicating a change area number along with "from schools" and "to schools." The table to the right shows the resulting utilization at each facility for the proposed changes.

This scenario would impact 1,452 students (current 7th-9th graders). Enrollment and utilization figures are based on grade advancing the current student population. Estimated enrollment figures for 2018-19 reflect only 9th-11th grades at Berlin High School and that 12th graders (current 10th graders) will remain at their current high school. Estimated enrollment figures for 2019-20 reflect full implementation. Areas of potential growth and decline were taken into consideration as scenarios were developed.

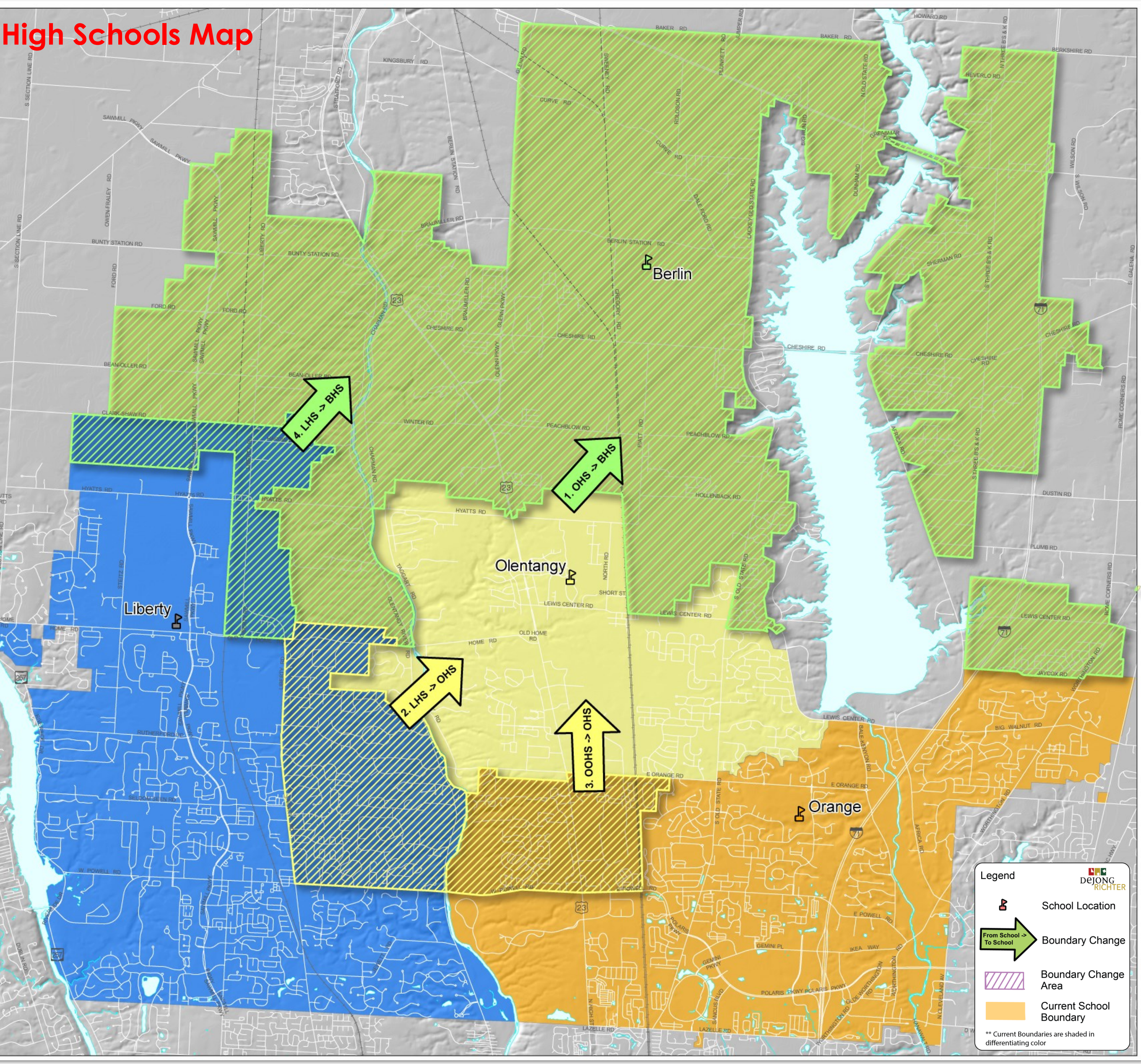
The table below outlines the change areas and associated subdivisions.

Change Area #	From School	To School	Current Subdivisions	Future Subdivisions
1	Olentangy	Berlin	Avonlea Bainbridge Ravines Beimont Place Brauniller Woods Cheshire Cove Cheshire Crossing Cheshire Crossing (South) Cheshire Woods Cheshire Woods Estates Donnoch Estates Enclosure at Glenross Estates at Brauniller (The)	Estates at Sherman Lakes (The) Harbor Pointe Hidden Cove Hidden Creek Hidden Creek Estates Hidden Meadows Kesselbrooke Station Lakes at Cheshire Landings at Glenross Marina at Alum Creek Marisol Meadows of Cheshire (The) Methisco (Student Housing) Nelson Farms Old Harbor Estates Oldfield Estates Pitt Meadows Ravines of Alum Creek (The) Reserve at Glenross (The) Reserve at Glenross (The) Riveland Shadow Creek Sheffield Park
2	Liberty	Olentangy	Ashmoore Bridlespur Canterbury Chamber Glen The Chase Doverly Park Deseret Lakes at Silverleaf Liberty Ridge	Olentangy Ridge Qual Meadows The Retreat Sherborne Mews Westchester Wingate Farms Woodland Glen Woodland Hall Woods at Wildcat Run
3	Orange	Olentangy	Burn Brae Deep Run at Riverbend Dooley's Orchard Foxridge Green Meadows Hidden Ravines Hidden Reserve	Hidden Springs Highmeadows Village Northpoint Meadows Riverbend Sycamore Meadows Villas at Riverbend (condos)
4	Liberty	Berlin	Hardin Woods Liberty Trace (current and future)	Clarkshaw Moors Woodcrest Cross Mullen Trace Nelson Farms (final phase)

High Schools	Capacity	Enrollment (2018-19)	Utilization (2018-19)
Berlin	1,800	966	54%
Liberty	1,800	1,980	110%
Olentangy	1,800	1,665	93%
Orange	1,800	1,896	105%

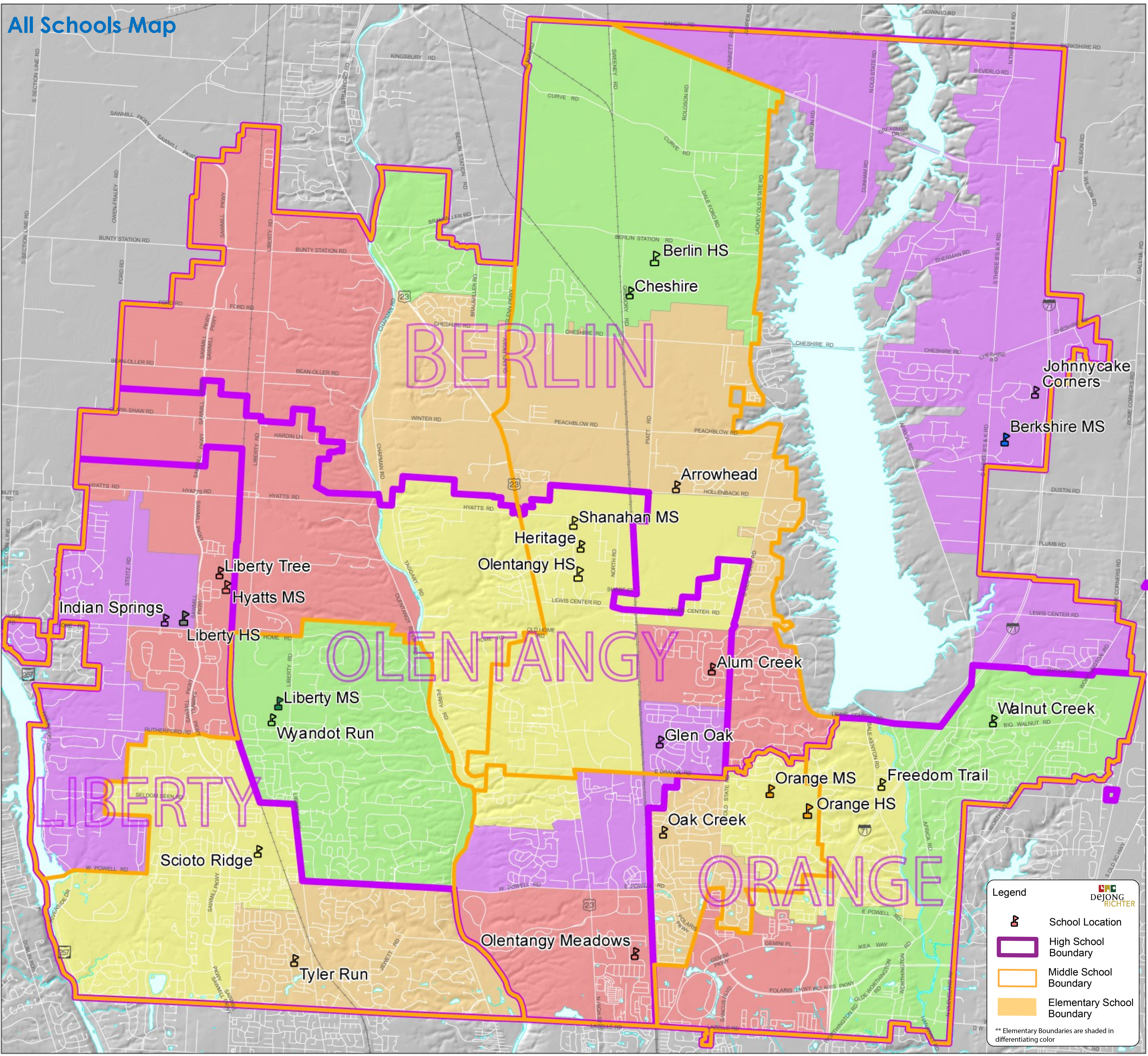
High Schools	Capacity	Enrollment (2019-20)	Utilization (2019-20)
Berlin	1,800	1,306	73%
Liberty	1,800	1,871	104%
Olentangy	1,800	1,576	88%
Orange	1,800	1,893	105%

High Schools Map

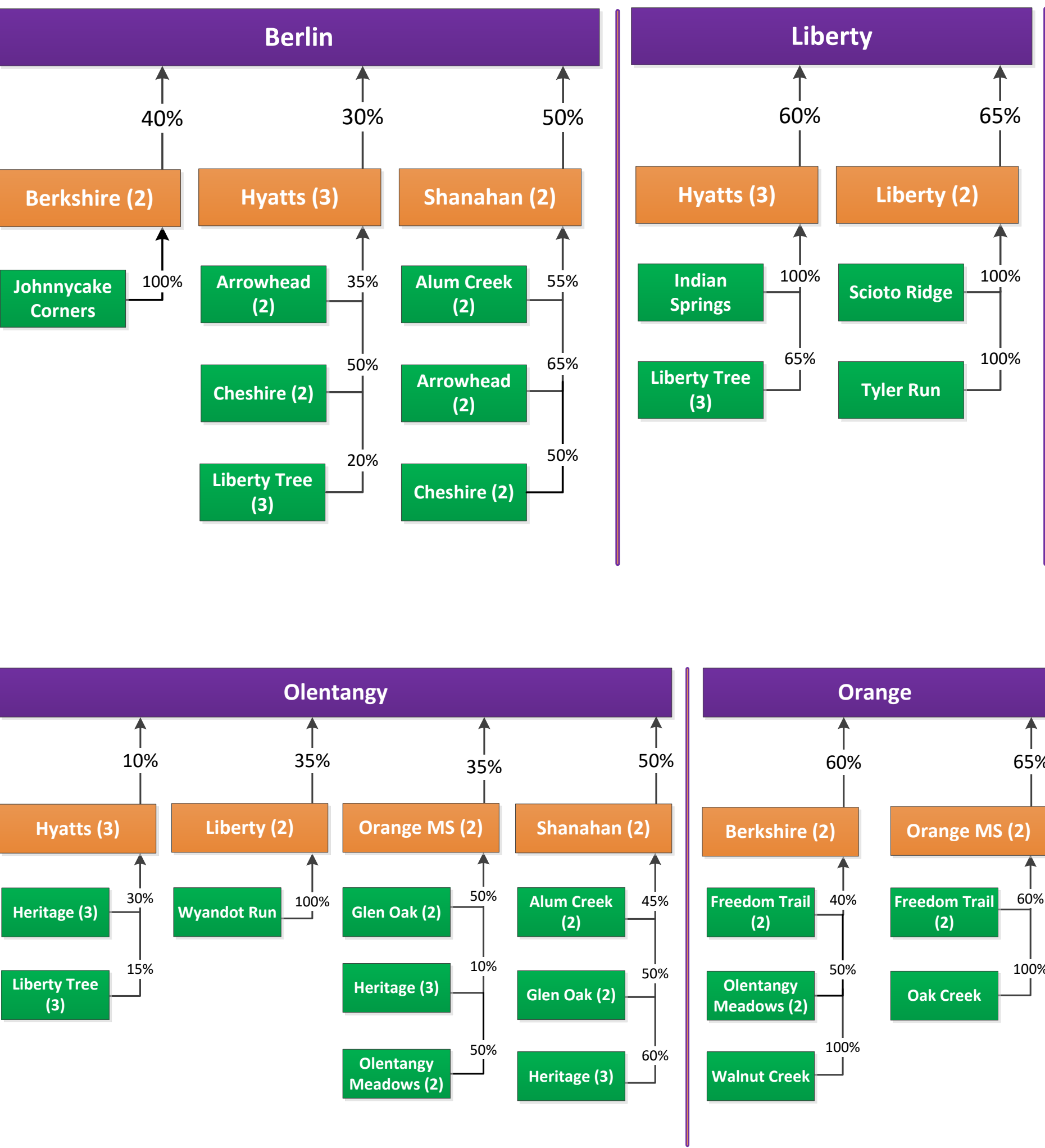


Comparison

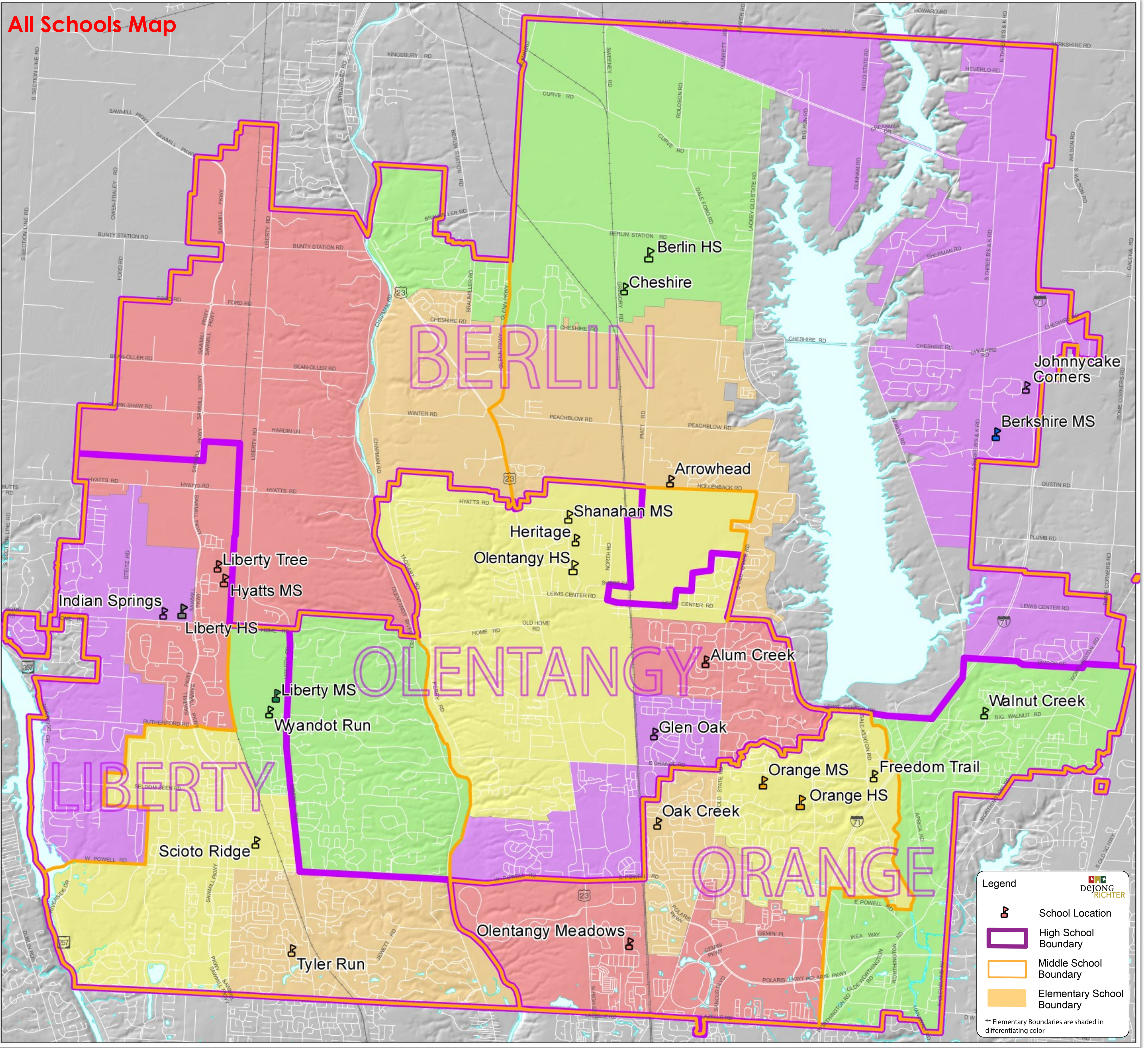
Scenario A



Feeder Chart



Scenario B



Feeder Chart

