



FutureThink

Formerly DeJONG-HEALY

FINAL REPORT



Enrollment Projection Update
October 2015

AKNOWLEDGEMENTS

FutureThink would like to extend our appreciation to the Olentangy Local Schools for choosing us to assist them in developing these enrollment projections. In addition, thank you to Michelle Murphy and Ralph Au.

Future growth in the Olentangy Local School District Community will have a significant impact on the school facilities and student population. The following information will continue to provide the District with a valuable planning tool to assist in determining the future direction of its school system.

As a consulting team, we appreciate this opportunity to serve your school community as you embark on your vision for the future of education in the Olentangy Local Schools.

Tracy Healy
President

Olentangy Local Schools

INTRODUCTION

FutureThink has provided enrollment projections for the Olentangy Local Schools annually since 1998. For several years, enrollment was projected using a methodology based on new housing starts due to the explosive growth seen in the District primarily from 1997-2005. Single-family building permits peaked in 2004 228 under 250 permits have been issued through June of this year.

2008 Projections

In 2008, **FutureThink** developed enrollment projections based on a methodology to better reflect the economic conditions of the time. Three basic assumptions were made:

- Kindergarten enrollment would continue to be negatively impacted by the reduced housing starts for the next few years. It would then start to level off.
- First grade growth would continue as it has. Traditionally, there is an increase in first grade enrollment from kindergarten the previous year. This is due, in great part, to parents choosing a private, all-day kindergarten program then enrolling their child in the district for first grade.
- Grades 2-12 would see a greater growth than previously anticipated through 2009-10 due to students leaving the private and parochial schools for financial reasons. After 2009-10, the growth rate would then slow.

2009 Projections

While the enrollment projections from 2008 were highly accurate [within 10 students total for the first year], there was concern raised regarding the kindergarten enrollment. Actual kindergarten enrollment for 2009-10 was 71 students higher than projected. Based on this, kindergarten enrollment was projected to grow at 4.6% in 2010-11, from a base of 1,344 students [kindergarten registration count]. Following 2010-11, growth was projected to be approximately 0.5% from the previous year until 2019-20.

Olentangy Local Schools

2010 Projections

While the enrollment projections from 2009 were within less than 1 percent of the actual enrollment, there was again concern raised regarding the kindergarten enrollment. Actual kindergarten enrollment for 2010-11 was 63 students lower than projected.

To better address kindergarten enrollment, births in the area were incorporated into the projections for years 2011-12 – 2013-14. In 2013-14, a growth factor of 7.2% was applied to account for growth due to the implementation of all-day kindergarten. Starting in the 2014-15 school year, a 0.5% growth factor was applied to the previous year's enrollment. For first grade, the average survival ratio of the past 2 years was used for kindergarten to 1st grade through 2013-14. Starting in the 2014-15 school year, the growth factor was reduced to 6% to account for the increase in kindergarten enrollment due to all-day kindergarten implementation.

2011 Projections

Overall, the methodology used in 2010 was successful. Kindergarten enrollment was within 7 students of the projection. The difference between the actual and projected enrollment for Pre-K-12 was 83 students or .49 percent.

For 2011, we used the same methodology with two minor modifications. Due to the change in legislation regarding all-day Kindergarten, we did not incorporate the additional growth factor for kindergarten in the 2013-14 school year. We incorporated births in the area for years 2012-13 – 2013-14. For the years 2014-15 – 2021-22, a 0.5% growth factor was applied to the previous year's enrollment. For first grade, the average survival ratio of the past 2 years was used.

Additionally, an "end of year" projection for the 2011-12 school year was included.

Olentangy Local Schools

2012 & 2013 Projections

Overall, the methodologies used in 2010 and 2011 were successful. The difference between the actual and projected enrollment for Pre-K-12 was 117 students or .66 percent.

For 2012 & 2013, we used the same methodology as 2011 with one modification. The preschool projection was based on kindergarten enrollment rather than simply adding 34 students each year as we did in 2011.

2014 Projections

In 2014, we have provided two sets of projections:

- One using the same methodology as last year
- The second incorporating a housing factor.

The second projection adds a housing component to the methodology. For the 2015-16 school year, the same methodology as above was used. For subsequent years, a housing factor was incorporated. This factor was determined by the survival ratios which occurred in the 2005-06 and 2006-07 school years. New single-family housing development at that time averaged in the 700 range.

2015 Projections

This year, we have used the same traditional “smoothing” method used in 2012, 2013 and 2014. We have also provided a second projection with a housing component based on new single-family housing development at a rate of 500 new homes per year.

As with any enrollment projection, there are a number of factors that can influence future growth—either positively or negatively. Due to the uncertain economic conditions we are currently living in, it is impossible to know how quickly the housing market will recover and to what extent.

Olentangy Local Schools

ENROLLMENT COMPARISON

The difference between the actual and projected enrollment for the 2015-16 school year is only 4 students or less than one-tenth of 1 percent.

The grades with the greatest difference were preschool, K, 3, and 4, respectively.

The following table illustrates the difference by grade.

Olentangy Local School District				
	Actual, 2015-16*	Projected	Difference	Percentage
Pre-K	372	299	-73	-19.62%
K	1,270	1,229	-41	-3.23%
1	1,423	1,403	-20	-1.41%
2	1,522	1,517	-5	-0.33%
3	1,449	1,490	41	2.83%
4	1,586	1,627	41	2.59%
5	1,646	1,645	-1	-0.06%
K-5 Total	8,896	8,911	15	0.17%
6	1,678	1,708	30	1.79%
7	1,588	1,612	24	1.51%
8	1,564	1,554	-10	-0.64%
6-8 Total	4,830	4,874	44	0.91%
9	1,519	1,517	-2	-0.13%
10	1,463	1,462	-1	-0.07%
11	1,318	1,317	-1	-0.08%
12	1,260	1,282	22	1.75%
9-12 Total	5,560	5,578	18	0.32%
Total	19,658	19,662	4	0.02%

Source: Olentangy Local School District

* as of September 2, 2015

Olentangy Local Schools

HISTORICAL ENROLLMENT

Over the past ten years, the PreK-12 enrollment in the Olentangy Local Schools has increased by 7,553 students or 62 percent. Total enrollment for the 2015-16 school year is 19,658, an increase of 602 students, or 3%, from the previous school year.

The following table and graphs illustrate the District's enrollment history from 2006-07 through 2015-16.

Olentangy Local School District
Historical Enrollment

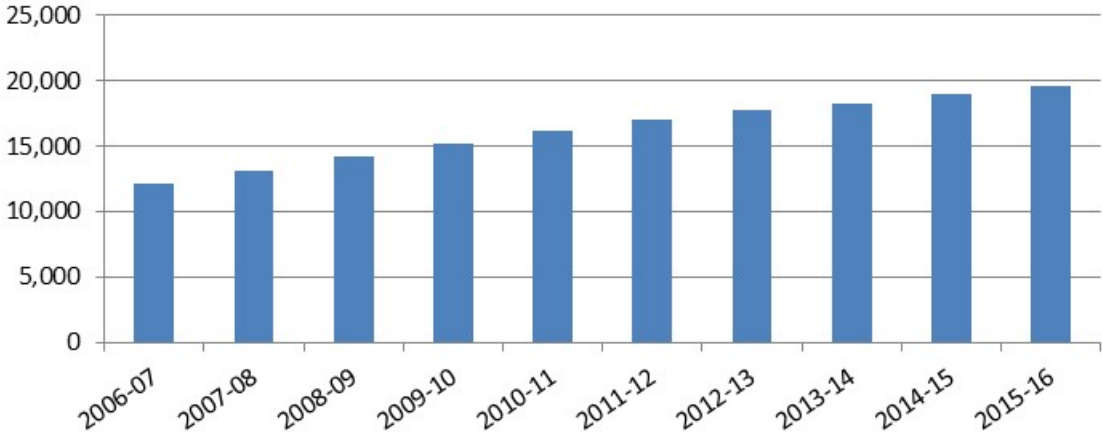
	2006-07	2007-08	2008-09	2009-10	2010-11	2011-12	2012-13	2013-14	2014-15	2015-16
Pre-K	147	172	234	300	276	293	321	288	318	372
K	1,150	1,203	1,253	1,319	1,343	1,341	1,241	1,282	1,219	1,270
1	1,237	1,320	1,318	1,422	1,488	1,477	1,503	1,404	1,492	1,423
2	1,087	1,270	1,334	1,349	1,460	1,499	1,520	1,516	1,430	1,522
3	1,069	1,123	1,320	1,356	1,378	1,487	1,559	1,562	1,591	1,449
4	1,015	1,106	1,169	1,362	1,399	1,410	1,510	1,584	1,598	1,586
5	927	1,032	1,168	1,167	1,379	1,408	1,450	1,525	1,652	1,646
K-5 Total	6,485	7,054	7,562	7,975	8,447	8,622	8,783	8,873	8,982	8,896
6	942	948	1,061	1,204	1,217	1,415	1,440	1,496	1,571	1,678
7	887	982	985	1,086	1,203	1,258	1,428	1,466	1,539	1,588
8	838	906	993	1,002	1,091	1,231	1,283	1,435	1,479	1,564
6-8 Total	2,667	2,836	3,039	3,292	3,511	3,904	4,151	4,397	4,589	4,830
9	815	848	948	1,023	1,043	1,116	1,272	1,318	1,460	1,519
10	725	822	863	952	1,042	1,042	1,125	1,269	1,317	1,463
11	640	728	839	871	968	1,069	1,039	1,116	1,273	1,318
12	626	641	720	838	875	974	1,067	1,047	1,117	1,260
9-12 Total	2,806	3,039	3,370	3,684	3,928	4,201	4,503	4,750	5,167	5,560
Total	12,105	13,101	14,205	15,251	16,162	17,020	17,758	18,308	19,056	19,658

Source: Olentangy Local School District

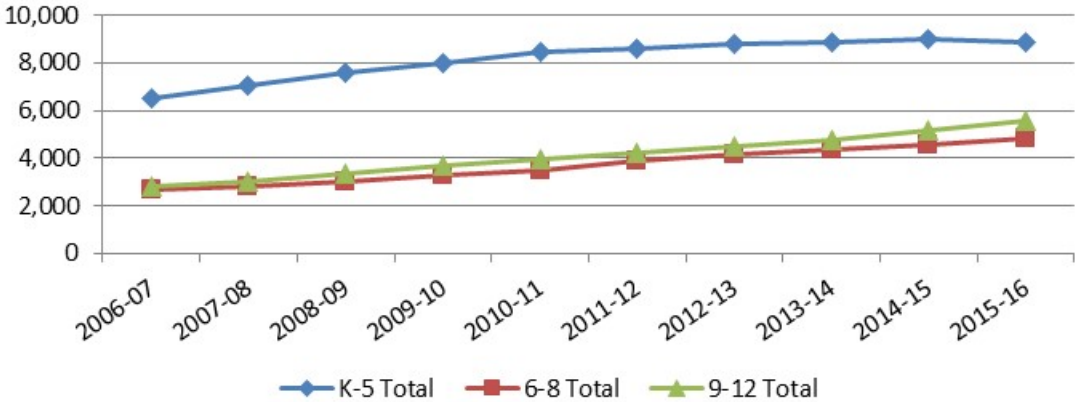
* as of September 2, 2015

Olentangy Local Schools

Olentangy Local School District
Historical Enrollment



Olentangy Local School District
Historical Enrollment by Grade Group



LIVE BIRTH DATA

Utilization of live birth data is recommended when projecting future kindergarten enrollments. This data provides a helpful overall trend. Large bubbles in birth counts, either up or down, can also be planned for or anticipated by the District.

In addition, the live birth counts are used in determining a birth-to-kindergarten survival ratio. This ratio identifies the percentage of children born in a representative area who attend kindergarten in the District five years later. The survival ratios for birth-to-kindergarten as well as grades 1-12 can be found later in this report.

The Ohio Department of Health [ODH] data warehouse provides information about live birth events for Ohio residents. Information about events occurring outside of Ohio to Ohio residents is included. Information about events occurring inside Ohio to non-Ohio residents is not included.

Data is arranged by the residence of the mother. For example, if a mother lives in Powell, Delaware County but delivers her baby in Columbus, Franklin County, the birth is counted in Powell, Delaware County.

The number of live births is recorded by:

- ▶ State
- ▶ County
- ▶ City/Town
- ▶ Census Tract
- ▶ Address [not available to the public]

Live birth counts are different from live birth rates. The live birth count is simply the actual number of live births. A birth rate is the number of births per 1,000 women in a specified population group. Birth rates are provided for counties and for 9 age groups from 10-14 years to 45+ years.

Olentangy Local Schools

The following chart and graph include the live birth count for zip codes 43015, 43016, 43017, 43021, 43035, 43065, 43074, 43081, 43082, 43235, and 43240. However, upon analysis of the map on page 10, only zip codes 43035, 43065, and 43240 were used for projection purposes.

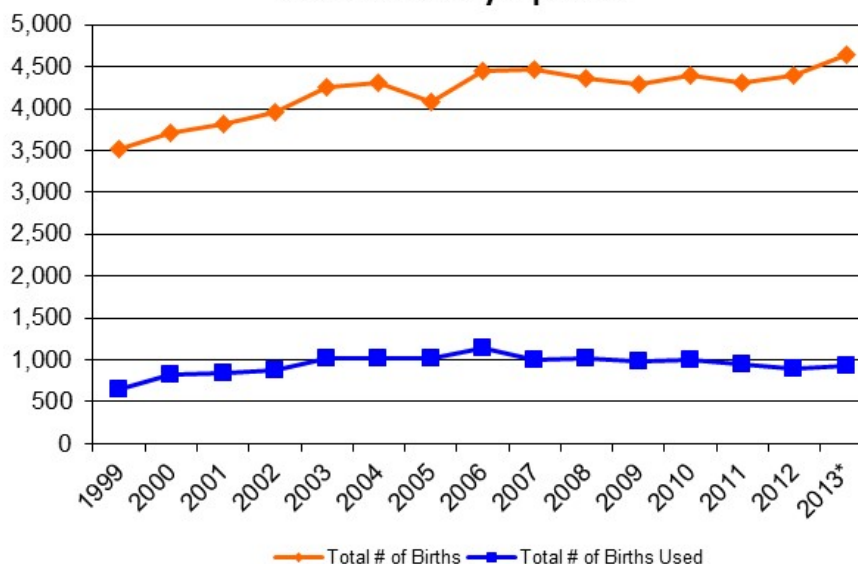
Olentangy Local School District
Live Birth Counts by Zip Code

Year	43015	43016	43017	43021	43035	43065	43074	43081	43082	43235	43240	Total # of Births	Total # of Births Used
1999	536	295	468	58	260	370	108	732	226	460	12	3,525	642
2000	525	296	470	65	317	469	99	701	301	437	34	3,714	820
2001	594	310	452	62	346	456	112	676	329	452	33	3,822	835
2002	646	361	466	71	358	481	117	675	354	397	36	3,962	875
2003	694	361	441	82	429	542	153	654	406	451	48	4,261	1,019
2004	678	419	449	94	434	522	154	650	413	421	67	4,301	1,023
2005	622	398	409	89	437	525	151	620	372	409	53	4,085	1,015
2006	694	465	428	103	507	570	137	668	368	439	63	4,442	1,140
2007	732	494	460	129	447	477	149	699	325	479	75	4,466	999
2008	683	495	436	112	447	505	142	702	308	467	71	4,368	1,023
2009	654	497	430	116	458	441	129	697	289	497	84	4,292	983
2010	640	519	463	113	430	489	139	711	310	515	73	4,402	992
2011	630	521	418	118	437	434	122	769	291	508	69	4,317	940
2012	669	589	430	112	401	428	129	733	260	573	70	4,394	899
2013*	680	617	427	109	418	441	138	803	338	601	74	4,646	933

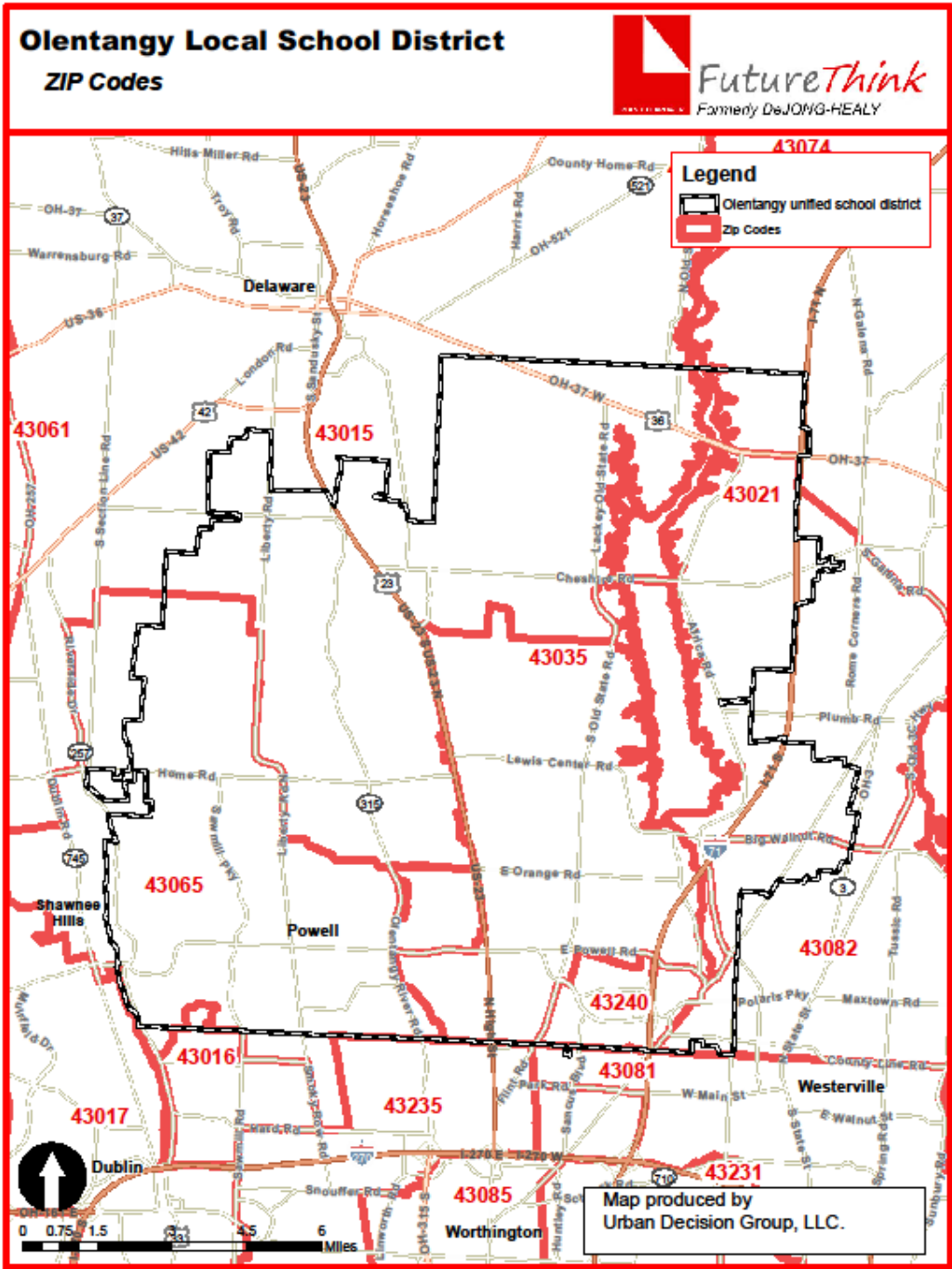
Source: Ohio Department of Health, Vital Statistics

* preliminary

Olentangy Local School District
Birth Counts by Zip Code



Olentangy Local Schools



Olentangy Local Schools

DEMOGRAPHICS

The Olentangy Local School District is located in southern Delaware County and includes Columbus City, Delaware City, Powell City, Berkshire Township, Berlin Township, Concord Township, Delaware Township, Genoa Township, Liberty Township, and Orange Township. General demographic data is included in the following tables for the areas located completely or partially in the District.

General Demographic Information

	Delaware County	State of Ohio
Per Capita Income	\$40,189	\$26,046
Median Household Income	\$89,757	\$48,305
Persons Below Poverty	4.9%	15.8%

Source: US Census, American Community Survey, 2013 5-Year Estimates

Total Population

	2000 Census	2010
Delaware County	109,989	174,214
Columbus City (part)	1,891	7,245
Delaware City	25,243	34,753
Powell City	6,247	11,500
Berkshire Township#	1,946	2,428
Berlin Township	3,315	6,498
Concord Township	4,507	9,294
Delaware Township*	1,559	1,964
Genoa Township	11,293	23,093
Liberty Township**	9,182	14,581
Orange Township	12,464	26,269

Source: ODOD Policy Research & Strategic Planning Office, August 2011

does not include Galena or Sunbury villages

* does not include Delaware City

** does not include Delaware City or Powell City

Olentangy Local Schools

Included are block group estimates and projections provided by ESRI Business Information Solutions (ESRI BIS). ESRI BIS uses a time series of estimates from the U.S. Census Bureau that includes the latest estimates and intercensal estimates adjusted for error of closure. The Census Bureau's time series is consistent, but testing has revealed improved accuracy by using a variety of sources to track county population trends.

ESRI BIS also employs a time series of building permits and housing starts plus residential deliveries. Finally, local data sources that tested well against Census 2000 are reviewed. Data sources are integrated and then analyzed by Census Block Groups.

Sources of data include:

- ▶ Supplementary Surveys of the Census Bureau
- ▶ Bureau of Labor Statistics' (BLS) Local Area Unemployment Statistics
- ▶ BLS Occupational Employment Statistics
- ▶ *InfoUSA*
- ▶ U.S. Bureau of the Census' Current Population Survey
- ▶ National Planning Association Data Service

The following table illustrates the current estimates and 5-year population projections based on block groups that comprise the school district, indicating areas of current and projected growth in selected age groups.

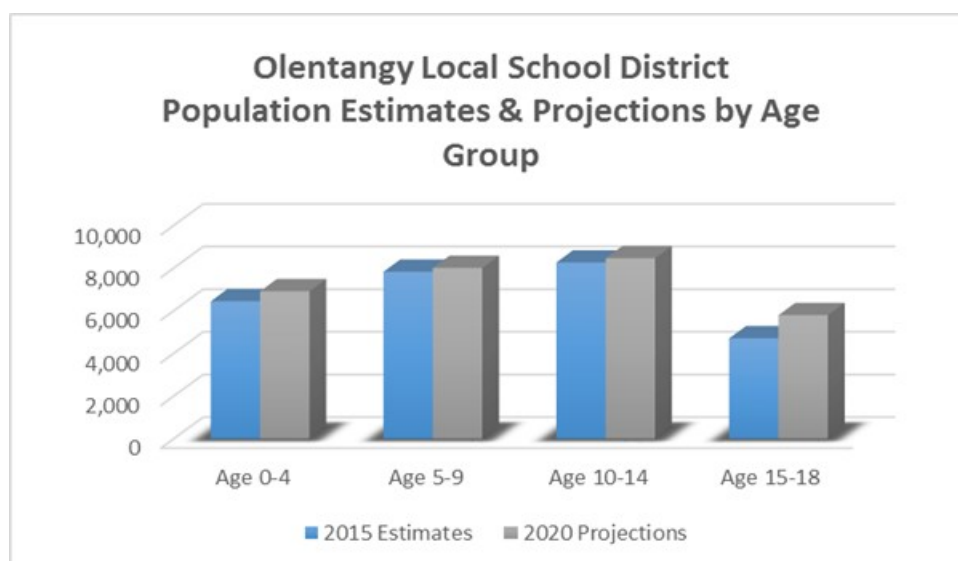
The total estimated 2015 population in the District is 82,852. This population is projected to increase by 9,546 people, or approximately 12% over a 5-year period. The 0-18 year-old population in the District currently totals 27,251. This population is projected to increase by 1,936 children, or approximately 7 percent.

Median and average household incomes in the District are projected to increase by approximately 11% and 13%, respectively over a 5-year period. The average family size is projected to increase slightly, and the number of family households is projected to increase by over 10 percent.

Olentangy Local Schools

Olentangy Local School District	2015 Estimates	2020 Projections	Change 2015-20	Change 2015-20 (%)
Total Population	82,852	92,398	9,546	11.5%
Age 0-4	6,446	6,916	470	7.3%
Age 5-9	7,830	8,011	181	2.3%
Age 10-14	8,266	8,466	200	2.4%
Age 15-18	4,709	5,794	1,085	23.0%
Total Age 0-18	27,251	29,187	1,936	7.1%
Median Age	36.5	37.2	0.7	1.9%

Source: ESRI

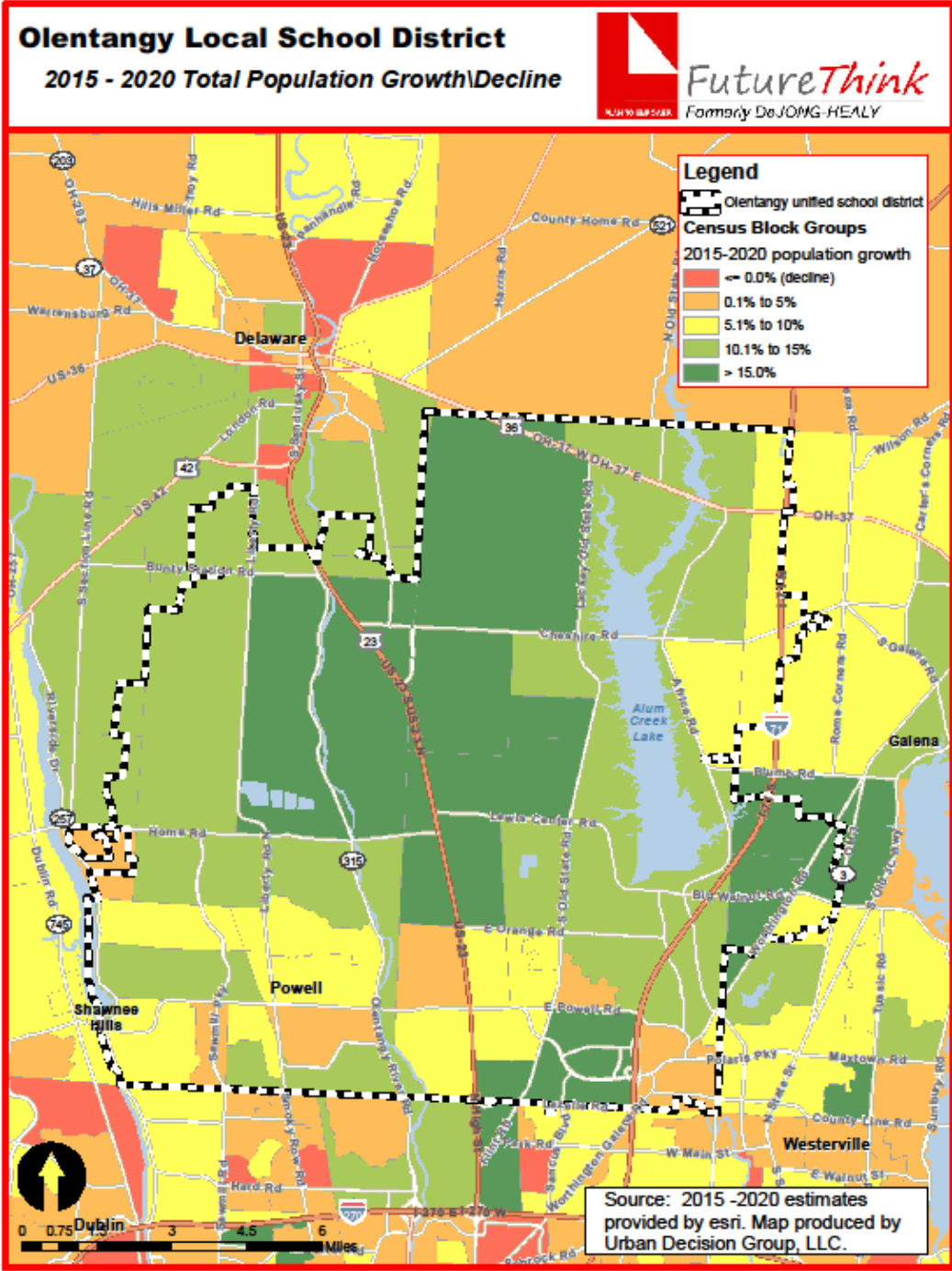


Olentangy Local School District	2015 Estimates	2020 Projections	Change 2015-20	Change 2015-20 (%)
Median Household Income	\$112,485	\$124,783	\$12,298	10.9%
Average Household Income	\$142,637	\$160,974	\$18,337	12.9%
Average Family Size	3.33	3.35	0.02	0.6%
Total Family Households	22,212	24,516	2,304	10.4%

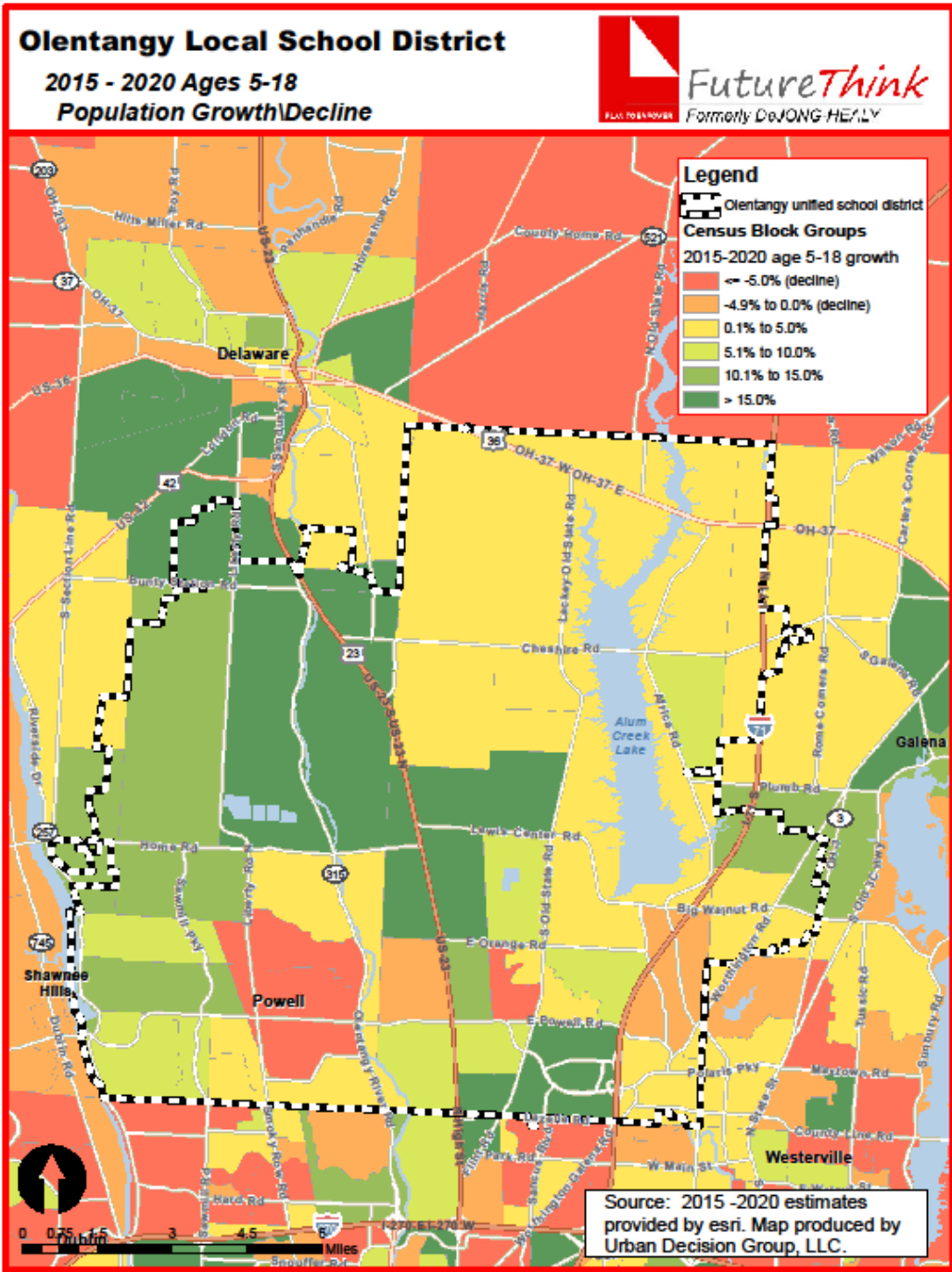
Source: ESRI

The maps on the following pages illustrate the data related to population and household income growth. The color coding identifies areas within the District that may be increasing or decreasing at different rates than others.

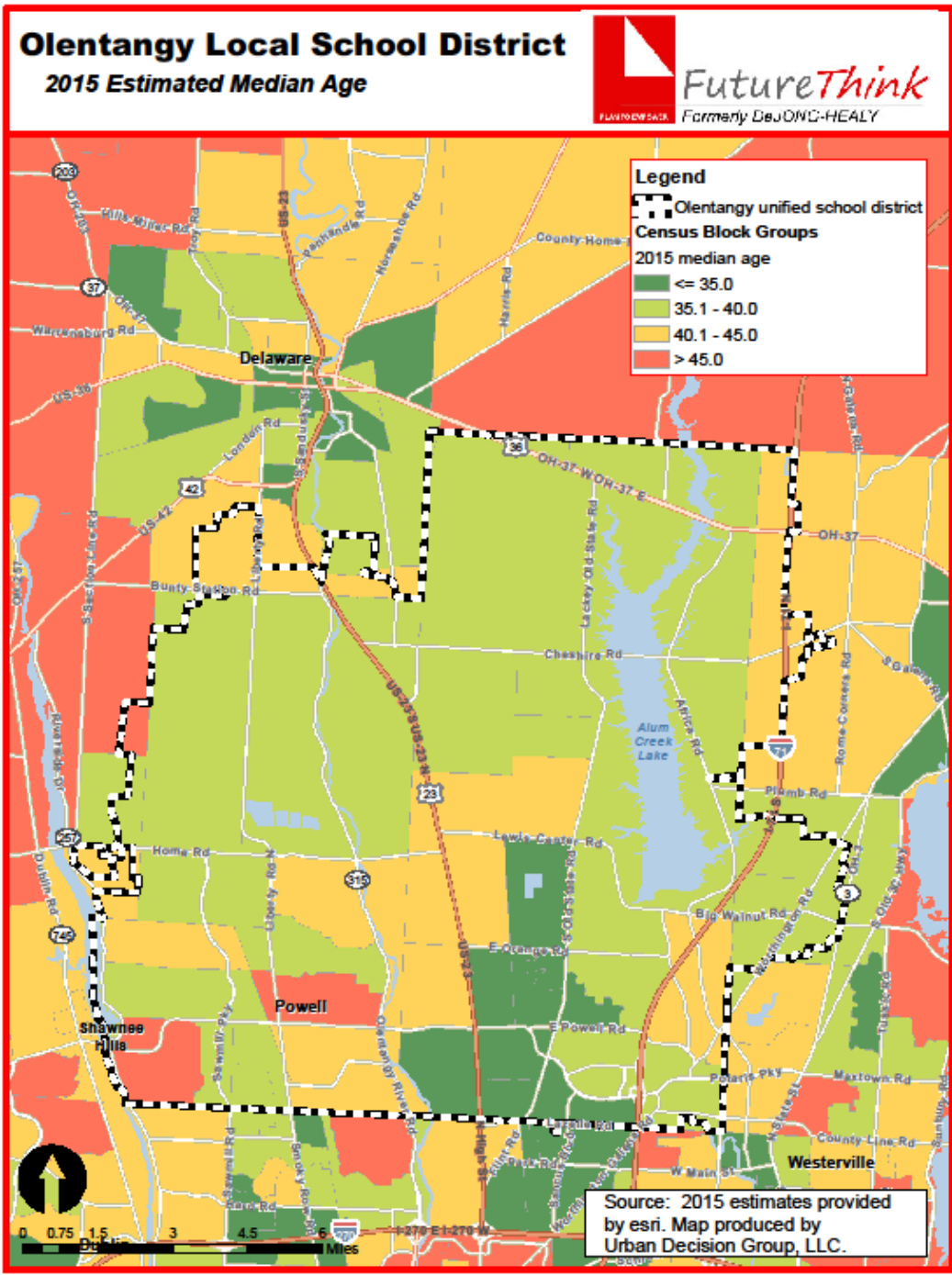
Olentangy Local Schools



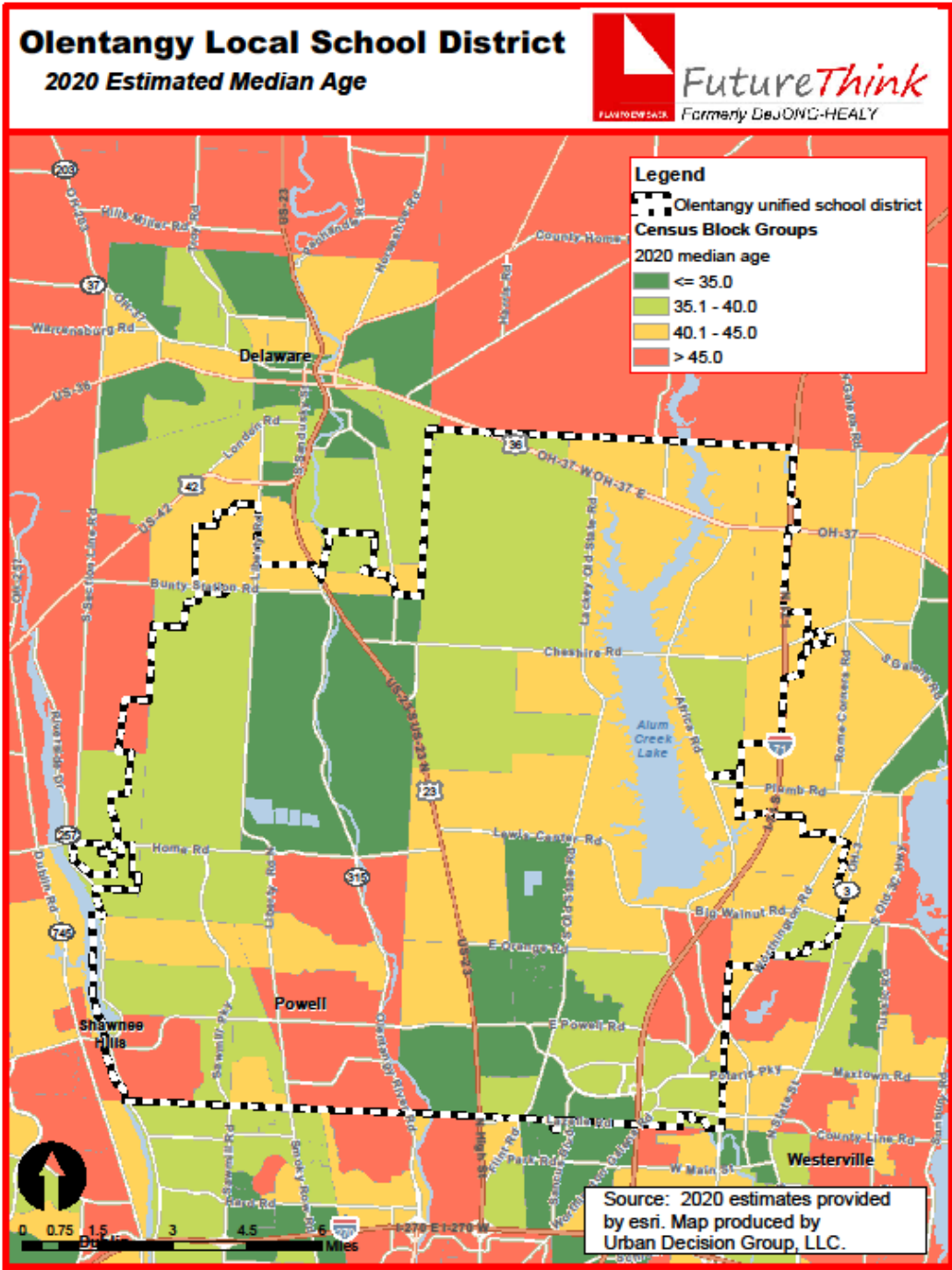
Olentangy Local Schools



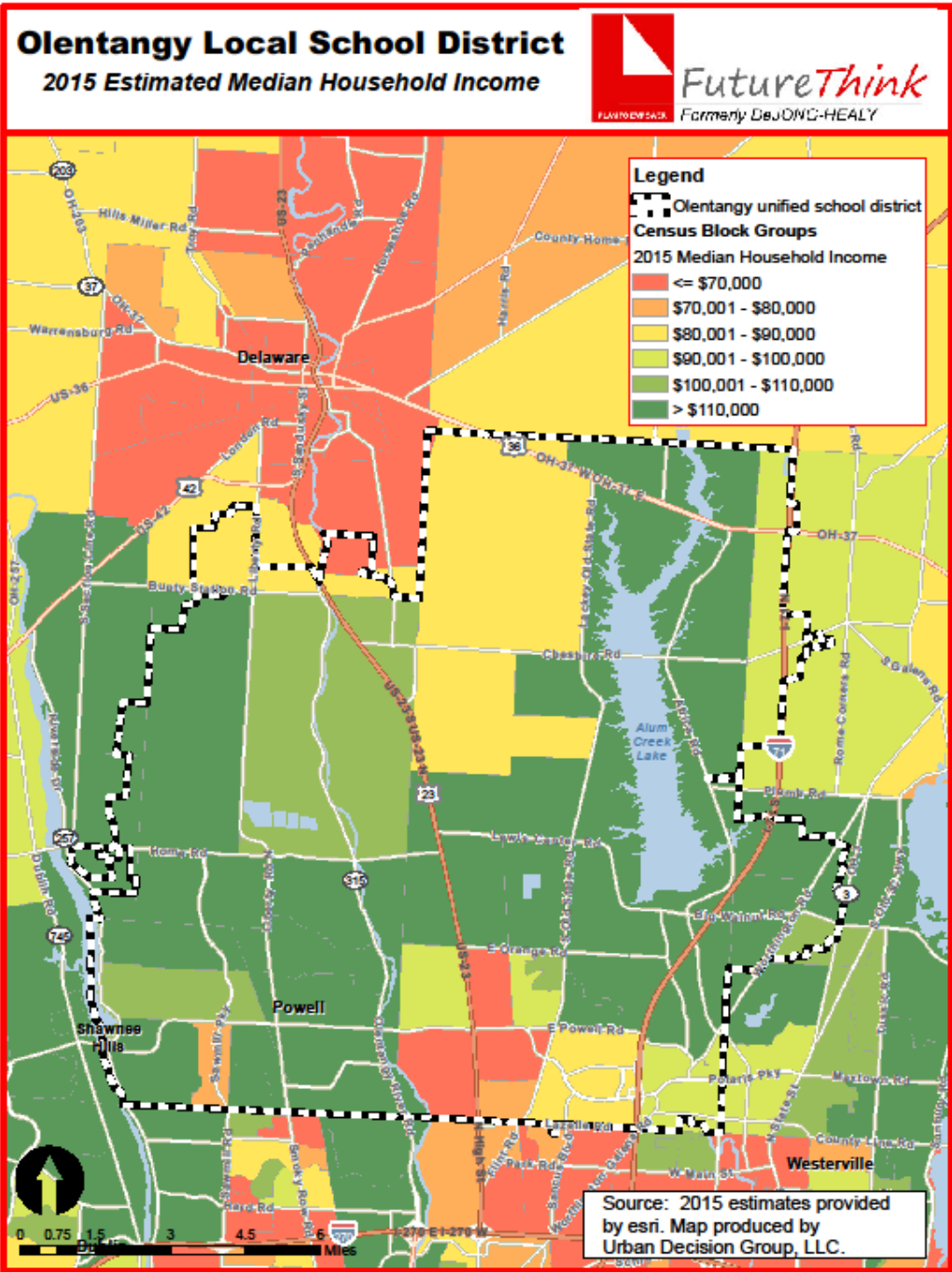
Olentangy Local Schools



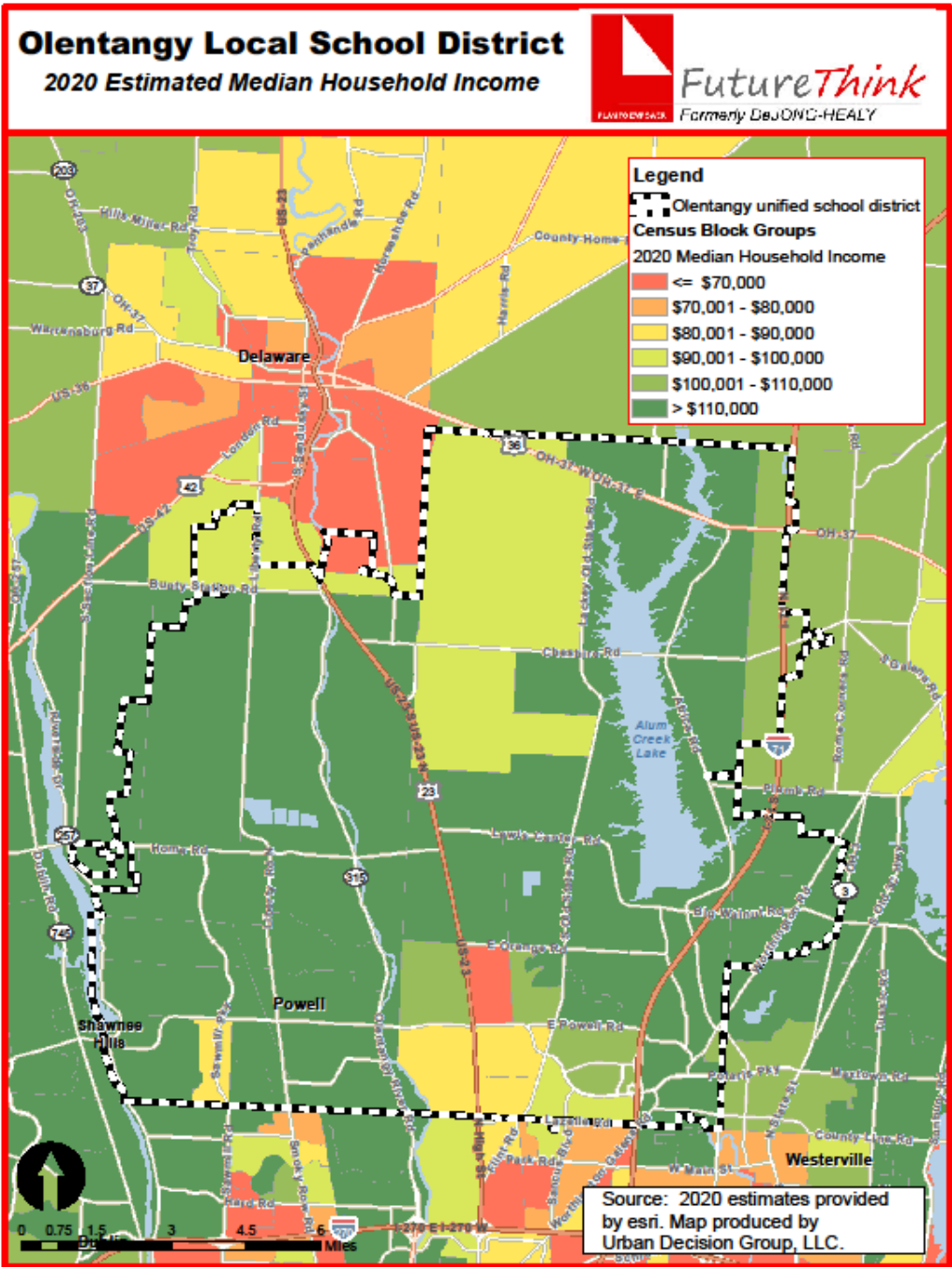
Olentangy Local Schools



Olentangy Local Schools



Olentangy Local Schools



Olentangy Local Schools

HOUSING INFORMATION

The following chart illustrates housing trends in the Olentangy Local School District since 2004. The number of single-family permits peaked in 2004 then began to decline. In 2011, the permits totaled over 400 for the first time since 2007. For this year, the total through June is 228 permits, not including the City of Delaware.

Single Family Building Permit Data

Year	Berkshire Twp	Berlin Twp	Concord Twp	Delaware Twp	Genoa Twp	Liberty Twp	Orange Twp	Delaware City	City of Powell	City of Columbus	Total
2004	8	97	72	4	154	179	767	102	209	139	1,731
2005	12	84	52	9	194	165	405	92	216	164	1,393
2006	20	66	13	8	96	102	216	72	138	37	768
2007	23	40	12	0	78	75	227	58	94	42	649
2008	8	30	12	0	44	69	142	23	41	18	387
2009	19	20	8	1	52	30	129	24	32	14	329
2010	6	35	9	0	52	45	117	52	34	20	370
2011	9	40	11	2	65	66	170	46	45	14	468
2012	11	26	13	6	62	104	160	53	50	53	538
2013	18	19	12	7	45	116	159	n/a	68	74	518
2014	21	27	10	1	10	78	137		104	21	409
2015 YTD	26	10	1	1	8	37	88		34	23	228

Source: Delaware County Regional Planning Commission; City of Powell; Delaware City; Columbus City

* through June 2015

The following table illustrates multi-family housing permits in Powell and the unincorporated area of Delaware County. No multi-family housing permits have been issued in Columbus within the District this year. Ninety-two were issued in 2014.

Olentangy Local School District
Multi-Family Building Permit Data

Year	2-Units	3 & 4-Units	5+ Units	Total
2005	18	21	0	39
2006	26	40	0	66
2007	0	11	40	51
2008	30	84	0	114
2009	2	24	0	26
2010	4	0	0	4
2011	40	18	0	58
2012	48	9	25	82
2013	58	35	6	99
2014	4	17	32	53
2015*	0	20	0	20

Source: SOCDs Building Permits Database

* through June 2015

includes Powell & Unincorporated Area in Delaware County

Olentangy Local Schools

SURVIVAL RATIOS

The chart below demonstrates the changes in enrollment as students move through the system. Percentages greater than 100 indicate that there are more students than there were in the previous grade the previous year. In other words, there was growth and new students were added to the system. Percentages less than 100 indicate that there was decline or students left the system.

The following table illustrates the survival ratios used in developing the enrollment projections for the Olentangy Local Schools.

from	to	birth -> K	K->1	1->2	2->3	3->4	4->5	5->6	6->7	7->8	8->9	9->10	10->11	11->12
2006	2007	137.5%	114.8%	102.7%	103.3%	103.5%	101.7%	102.3%	104.2%	102.1%	101.2%	100.9%	100.4%	100.2%
2007	2008	123.0%	109.6%	101.1%	103.9%	104.1%	105.6%	102.8%	103.9%	101.1%	104.6%	101.8%	102.1%	98.9%
2008	2009	128.9%	113.5%	102.4%	101.6%	103.2%	99.8%	103.1%	102.4%	101.7%	103.0%	100.4%	100.9%	99.9%
2009	2010	132.3%	112.8%	102.7%	102.1%	103.2%	101.2%	104.3%	99.9%	100.5%	104.1%	101.9%	101.7%	100.5%
2010	2011	117.6%	110.0%	100.7%	101.8%	102.3%	100.6%	102.6%	103.4%	102.3%	102.3%	99.9%	102.6%	100.6%
2011	2012	124.2%	112.1%	102.9%	104.0%	101.5%	102.8%	102.3%	100.9%	102.0%	103.3%	100.8%	99.7%	99.8%
2012	2013	125.3%	113.1%	100.9%	102.8%	101.6%	101.0%	103.2%	101.8%	100.5%	102.7%	99.8%	99.2%	100.8%
2013	2014	124.0%	116.4%	101.9%	104.9%	102.3%	104.3%	103.0%	102.9%	100.9%	101.7%	99.9%	100.3%	100.1%
2014	2015	128.0%	116.7%	102.0%	101.3%	99.7%	103.0%	101.6%	101.1%	101.6%	102.7%	100.2%	100.1%	99.0%
	average	126.77%	113.217%	101.90%	102.9%	102.37%	102.2%	102.8%	102.3%	101.4%	102.860%	100.612%	100.776%	99.963%
	standard deviation	5.437%	2.363%	0.785%	1.172%	1.245%	1.754%	0.713%	1.380%	0.663%	1.017%	0.737%	1.067%	0.624%

ENROLLMENT PROJECTIONS

Based on the current trends seen in the District, **FutureThink** has provided two sets of enrollment projections. The first projection uses the same methodology as last year, which is outlined below.

Projection #1 – Traditional “Smoothing” Model

Pre-K

The preschool projection is based on kindergarten enrollment. We used the average of the last 2 years, a percentage of 27.69 percent.

Kindergarten

For kindergarten, a 0.5% growth factor was applied to the previous year’s enrollment.

Grades 1-12

For grades 1-12, the average survival ratio of the past 2 years was applied.

2015-16 End of Year Projection

The 2015-16 “End of Year” projection was determined by applying the factor of .002 between the actual September 2, 2015 and previous projected enrollment for 2015-16 and adding it to the current enrollment.

For example, the current kindergarten enrollment is 1,270. By adding .002 [or 3 students] to that number, the end of year kindergarten enrollment is projected to be 1,273 students.

Olentangy Local Schools

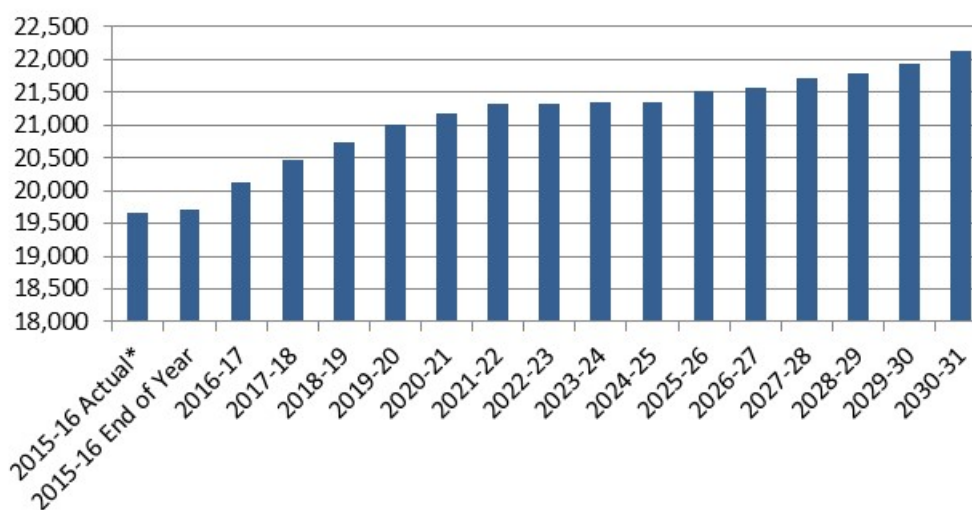
Using last year's model, student enrollment is projected to increase by 1,869 students (or 10%) in grades Pre-K-12 from the 2015-16 to the 2025-26 school year. An additional five years have been added to the projection for long-range planning purposes. The following table and graphs illustrate projected enrollments by grade and grade group through the 2030-31 school year.

Olentangy Local School District
Projected Enrollment - Traditional Smoothing Model

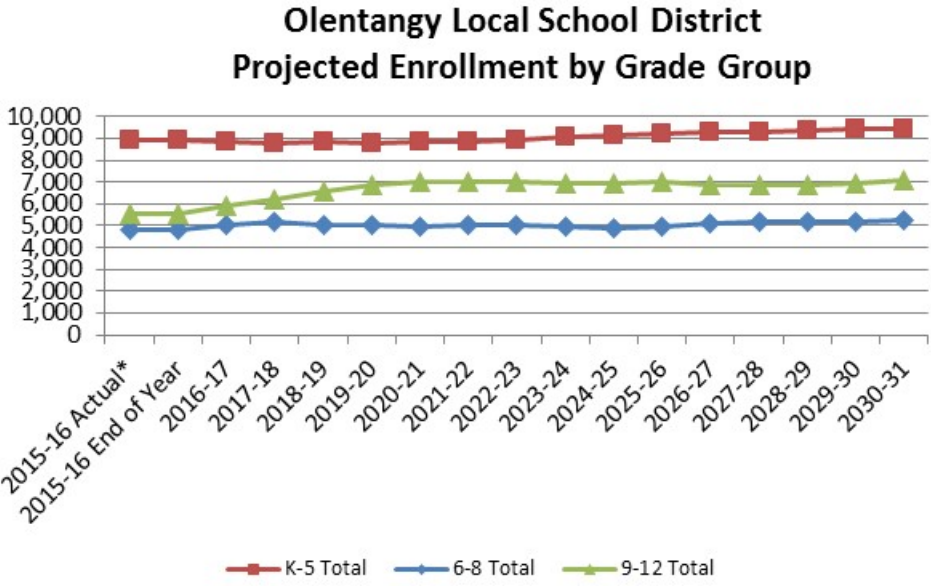
	2015-16 Actual*	2015-16 End of Year	2016-17	2017-18	2018-19	2019-20	2020-21	2021-22	2022-23	2023-24	2024-25	2025-26	2026-27	2027-28	2028-29	2029-30	2030-31
Pre-K	372	373	344	329	341	353	355	357	359	361	362	364	366	368	370	372	374
K	1,270	1,273	1,241	1,187	1,232	1,276	1,283	1,289	1,296	1,302	1,309	1,315	1,322	1,328	1,335	1,342	1,348
1	1,423	1,426	1,484	1,446	1,383	1,435	1,488	1,495	1,503	1,510	1,518	1,525	1,533	1,541	1,548	1,556	1,564
2	1,522	1,525	1,454	1,512	1,474	1,410	1,463	1,516	1,524	1,532	1,539	1,547	1,555	1,562	1,570	1,578	1,586
3	1,449	1,452	1,573	1,499	1,560	1,520	1,454	1,509	1,564	1,572	1,580	1,588	1,596	1,603	1,612	1,620	1,628
4	1,586	1,589	1,466	1,589	1,514	1,575	1,536	1,469	1,524	1,580	1,587	1,595	1,603	1,611	1,619	1,628	1,636
5	1,646	1,649	1,647	1,520	1,646	1,569	1,633	1,592	1,522	1,580	1,637	1,645	1,654	1,662	1,670	1,679	1,687
K-5 Total	8,896	8,914	8,865	8,753	8,809	8,785	8,857	8,870	8,933	9,076	9,170	9,215	9,263	9,307	9,354	9,403	9,449
6	1,678	1,681	1,687	1,685	1,555	1,684	1,605	1,670	1,628	1,557	1,616	1,675	1,683	1,692	1,700	1,709	1,717
7	1,588	1,591	1,714	1,720	1,718	1,586	1,718	1,637	1,703	1,660	1,588	1,648	1,708	1,716	1,725	1,734	1,742
8	1,564	1,567	1,611	1,748	1,754	1,752	1,617	1,752	1,669	1,737	1,693	1,619	1,681	1,742	1,750	1,759	1,768
6-8 Total	4,830	4,839	5,012	5,153	5,027	5,022	4,940	5,059	5,000	4,954	4,897	4,942	5,072	5,150	5,175	5,202	5,227
9	1,519	1,522	1,602	1,647	1,787	1,793	1,791	1,653	1,790	1,707	1,776	1,731	1,655	1,718	1,780	1,789	1,798
10	1,463	1,466	1,523	1,603	1,648	1,788	1,794	1,792	1,654	1,792	1,708	1,777	1,732	1,656	1,719	1,782	1,790
11	1,318	1,321	1,469	1,526	1,606	1,651	1,792	1,798	1,796	1,657	1,795	1,711	1,780	1,735	1,660	1,722	1,785
12	1,260	1,263	1,315	1,462	1,519	1,599	1,643	1,783	1,790	1,787	1,649	1,787	1,703	1,772	1,727	1,652	1,714
9-12 Total	5,560	5,572	5,909	6,238	6,560	6,831	7,020	7,026	7,030	6,943	6,928	7,006	6,870	6,881	6,886	6,945	7,087
Total	19,658	19,698	20,130	20,473	20,737	20,991	21,172	21,312	21,322	21,334	21,357	21,527	21,571	21,706	21,785	21,922	22,137

Source: FutureThink
* as of September 2, 2015

Olentangy Local School District Projected Enrollment



Olentangy Local Schools



Olentangy Local Schools

COMPARISON TO 2014 ENROLLMENT PROJECTION

Last year's projection is illustrated in the following table. For the 2024-25 school year, the difference between the 2014 projection (21,123) and the current projection (21,357) is 234 students.

The differences at each level in the 2024-25 school year are as follow:

- Pre-K – (+) 50 students
- K-5 – (+) 274 students
- 6-8 – (-) 68 students
- 9-12 – (-) 22 students

Olentangy Local School District
Projected Enrollment - Traditional Smoothing Model

	2014-15 Actual*	2014-15 End of Year	2015-16	2016-17	2017-18	2018-19	2019-20	2020-21	2021-22	2022-23	2023-24	2024-25
Pre-K	318	319	299	300	302	303	305	306	308	309	311	312
K	1,219	1,222	1,229	1,235	1,241	1,247	1,253	1,260	1,266	1,272	1,279	1,285
1	1,492	1,496	1,403	1,410	1,417	1,424	1,431	1,438	1,445	1,453	1,460	1,467
2	1,430	1,434	1,517	1,422	1,429	1,436	1,443	1,451	1,458	1,465	1,472	1,480
3	1,591	1,595	1,490	1,575	1,477	1,484	1,491	1,499	1,506	1,514	1,522	1,529
4	1,598	1,602	1,627	1,519	1,606	1,506	1,513	1,521	1,528	1,536	1,544	1,551
5	1,652	1,656	1,645	1,670	1,559	1,648	1,545	1,553	1,561	1,569	1,576	1,584
K-5 Total	8,982	9,005	8,911	8,831	8,729	8,745	8,676	8,722	8,764	8,809	8,853	8,896
6	1,571	1,575	1,708	1,696	1,721	1,607	1,699	1,593	1,601	1,609	1,617	1,625
7	1,539	1,543	1,612	1,748	1,735	1,762	1,645	1,739	1,630	1,639	1,647	1,655
8	1,479	1,483	1,554	1,650	1,789	1,776	1,803	1,683	1,780	1,669	1,677	1,685
6-8 Total	4,589	4,601	4,874	5,094	5,245	5,145	5,147	5,015	5,011	4,917	4,941	4,965
9	1,460	1,464	1,517	1,589	1,687	1,829	1,816	1,843	1,721	1,820	1,706	1,714
10	1,317	1,320	1,462	1,514	1,586	1,684	1,826	1,813	1,840	1,718	1,817	1,703
11	1,273	1,276	1,317	1,459	1,511	1,583	1,680	1,821	1,808	1,836	1,714	1,812
12	1,117	1,120	1,282	1,323	1,465	1,517	1,589	1,687	1,829	1,816	1,844	1,721
9-12 Total	5,167	5,180	5,578	5,885	6,249	6,613	6,911	7,164	7,198	7,190	7,081	6,950
Total	19,056	19,105	19,662	20,110	20,525	20,806	21,039	21,207	21,281	21,225	21,186	21,123

Source: FutureThink

* as of August 22, 2014

Olentangy Local Schools

Historical and ten-year projected enrollments by school follow.

Elementary Schools

Alum Creek Elementary School

Historical Enrollment

Grade	2006-07	2007-08	2008-09	2009-10	2010-11	2011-12	2012-13	2013-14	2014-15	2015-16
K	109	92	119	95	94	82	89	81	84	70
1	111	113	104	116	101	91	104	95	83	95
2	102	110	116	103	115	104	99	107	97	79
3	101	97	110	120	95	112	105	94	101	101
4	94	94	96	114	115	91	119	107	100	95
5	88	90	96	92	112	115	92	124	110	96
Total	605	596	641	640	632	595	608	608	575	536

Alum Creek Elementary School

Projected Enrollment

Grade	2016-17	2017-18	2018-19	2019-20	2020-21	2021-22	2022-23	2023-24	2024-25	2025-26
K	78	75	78	81	81	81	82	82	82	82
1	76	86	82	85	89	88	88	90	90	90
2	97	78	87	82	86	91	90	90	91	91
3	80	98	78	87	84	87	91	90	90	91
4	103	81	99	79	89	85	88	91	91	91
5	98	106	83	101	81	90	87	90	94	93
Total	532	524	507	515	510	522	526	533	538	538

Arrowhead Elementary School

Historical Enrollment

Grade	2006-07	2007-08	2008-09	2009-10	2010-11	2011-12	2012-13	2013-14	2014-15	2015-16
K	117	63	90	109	90	45	61	70	62	55
1	118	103	84	89	103	83	58	64	78	65
2	100	90	110	80	77	102	69	61	66	76
3	109	94	107	105	79	82	101	70	72	70
4	113	95	100	102	86	77	74	104	79	68
5	114	78	107	104	85	82	70	75	103	79
Total	671	523	598	589	520	471	433	444	460	413

Arrowhead Elementary School

Projected Enrollment

Grade	2016-17	2017-18	2018-19	2019-20	2020-21	2021-22	2022-23	2023-24	2024-25	2025-26
K	62	60	62	66	64	64	64	65	65	65
1	61	69	66	69	73	71	71	72	72	72
2	65	62	70	67	70	74	72	72	72	73
3	81	70	66	75	72	74	79	77	77	77
4	71	83	72	67	75	73	75	80	78	78
5	70	72	84	73	68	77	74	76	81	78
Total	410	416	420	417	422	433	435	442	445	443

Olentangy Local Schools

Cheshire Elementary Historical Enrollment

Grade	2006-07	2007-08	2008-09	2009-10	2010-11	2011-12	2012-13	2013-14	2014-15	2015-16
K					95	69	91	100	95	114
1					79	102	97	105	126	103
2					82	82	99	100	111	139
3					74	89	92	113	108	111
4					69	74	91	88	118	106
5					68	75	77	96	101	135
Total					467	491	547	602	659	708

Cheshire Elementary Projected Enrollment

Grade	2016-17	2017-18	2018-19	2019-20	2020-21	2021-22	2022-23	2023-24	2024-25	2025-26
K	97	93	95	99	100	100	101	102	102	102
1	131	111	107	110	114	115	115	116	116	116
2	111	140	118	113	117	120	123	123	124	124
3	147	117	148	126	119	125	127	131	131	132
4	111	148	117	148	126	119	125	127	130	130
5	122	127	169	134	170	143	137	142	146	148
Total	719	736	754	730	746	722	728	741	749	752

Freedom Trail Elementary Historical Enrollment

Grade	2006-07	2007-08	2008-09	2009-10	2010-11	2011-12	2012-13	2013-14	2014-15	2015-16
K				103	105	78	82	85	78	72
1				125	112	115	111	93	99	99
2				110	127	113	112	113	95	97
3				93	108	120	119	115	121	97
4				97	96	106	120	117	117	115
5				85	94	100	109	115	118	126
Total				613	642	632	653	638	628	606

Freedom Trail Elementary Projected Enrollment

Grade	2016-17	2017-18	2018-19	2019-20	2020-21	2021-22	2022-23	2023-24	2024-25	2025-26
K	75	72	75	78	78	78	79	79	79	79
1	87	90	86	90	94	94	94	95	95	95
2	100	88	92	88	91	95	95	95	95	96
3	102	105	92	96	92	95	99	99	99	100
4	96	101	104	91	95	91	95	99	98	99
5	122	101	106	109	93	100	96	99	103	103
Total	582	557	555	552	543	553	558	566	569	572

Olentangy Local Schools

Glen Oak Elementary School Historical Enrollment

Grade	2006-07	2007-08	2008-09	2009-10	2010-11	2011-12	2012-13	2013-14	2014-15	2015-16
K	108	109	115	113	134	82	97	97	102	99
1	119	113	126	97	116	133	106	101	105	114
2	94	102	119	99	103	118	97	97	103	107
3	78	93	94	82	105	111	91	100	98	100
4	82	86	95	88	81	108	79	98	99	98
5	75	68	88	68	93	80	74	83	96	94
Total	556	571	637	547	632	632	544	576	603	612

Glen Oak Elementary School Projected Enrollment

Grade	2016-17	2017-18	2018-19	2019-20	2020-21	2021-22	2022-23	2023-24	2024-25	2025-26
K	100	95	98	101	103	104	104	104	105	106
1	107	107	102	107	110	112	113	112	113	114
2	113	103	105	101	105	109	110	111	110	111
3	108	113	105	106	102	105	109	110	107	110
4	101	108	113	105	106	102	105	109	107	110
5	96	99	105	110	103	105	99	103	108	107
Total	625	625	628	630	629	637	640	649	650	658

Heritage Elementary School Historical Enrollment

Grade	2006-07	2007-08	2008-09	2009-10	2010-11	2011-12	2012-13	2013-14	2014-15	2015-16
K						324	79	84	90	103
1							95	102	97	101
2							103	102	108	106
3							95	113	113	117
4							91	100	109	107
5							83	93	104	116
Total						324	546	594	621	650

Heritage Elementary School Projected Enrollment

Grade	2016-17	2017-18	2018-19	2019-20	2020-21	2021-22	2022-23	2023-24	2024-25	2025-26
K	89	85	88	91	92	93	93	93	93	95
1	118	102	97	102	105	105	106	106	107	107
2	110	127	110	105	109	112	112	114	114	115
3	117	120	140	121	114	119	123	123	126	126
4	116	116	119	137	119	114	119	123	123	124
5	112	120	120	124	144	124	119	123	128	129
Total	662	670	674	680	683	667	672	682	691	696

Olentangy Local Schools

Indian Springs Elementary Historical Enrollment

Grade	2006-07	2007-08	2008-09	2009-10	2010-11	2011-12	2012-13	2013-14	2014-15	2015-16
K	115	95	132	86	109	79	90	92	74	84
1	132	138	108	134	110	113	105	102	104	89
2	138	117	139	101	133	118	113	109	107	106
3	114	99	114	142	87	128	117	115	116	109
4	82	93	97	115	111	97	126	117	123	117
5	87	65	97	92	95	108	98	130	119	128
Total	668	607	687	670	645	643	649	665	643	633

Indian Springs Elementary Projected Enrollment

Grade	2016-17	2017-18	2018-19	2019-20	2020-21	2021-22	2022-23	2023-24	2024-25	2025-26
K	83	79	82	84	85	85	86	86	86	87
1	98	97	92	96	99	99	100	101	101	101
2	92	102	100	96	99	104	103	104	104	105
3	111	96	106	104	99	103	106	108	110	108
4	112	113	98	109	107	101	105	109	110	110
5	121	115	117	102	112	110	105	109	112	113
Total	617	602	595	591	601	602	605	617	623	624

Johnnycake Corners Elementary School Historical Enrollment

Grade	2006-07	2007-08	2008-09	2009-10	2010-11	2011-12	2012-13	2013-14	2014-15	2015-16
K			74	67	85	73	85	67	82	75
1			71	85	78	86	110	102	84	103
2			83	80	90	79	92	113	98	84
3			73	84	88	101	82	94	114	104
4			68	75	88	95	108	89	95	123
5			69	65	72	92	100	113	94	98
Total			438	456	501	526	577	578	567	587

Johnnycake Corners Elementary School Projected Enrollment

Grade	2016-17	2017-18	2018-19	2019-20	2020-21	2021-22	2022-23	2023-24	2024-25	2025-26
K	77	74	78	80	80	80	81	81	82	82
1	95	97	93	95	100	100	100	101	101	102
2	103	95	97	93	96	101	101	101	101	102
3	88	107	98	101	96	99	102	102	104	105
4	110	92	112	103	105	101	106	110	110	110
5	130	115	97	118	108	111	106	110	113	114
Total	603	580	575	590	585	592	596	605	611	615

Olentangy Local Schools

Liberty Tree Elementary School

Historical Enrollment

Grade	2006-07	2007-08	2008-09	2009-10	2010-11	2011-12	2012-13	2013-14	2014-15	2015-16
K		104	121	164	104	95	83	96	77	88
1		85	139	122	137	108	106	95	103	88
2		74	96	135	114	135	101	112	88	101
3		77	86	92	121	115	118	101	121	85
4		63	89	94	116	120	94	118	102	120
5		58	76	87	105	117	109	93	129	99
Total		461	607	694	697	690	611	615	620	581

Liberty Tree Elementary School

Projected Enrollment

Grade	2016-17	2017-18	2018-19	2019-20	2020-21	2021-22	2022-23	2023-24	2024-25	2025-26
K	84	79	82	85	86	86	87	87	88	89
1	99	94	91	93	98	97	97	98	98	99
2	87	99	93	90	93	97	96	96	97	98
3	101	89	99	94	90	93	97	96	98	97
4	85	101	88	98	93	89	92	98	97	97
5	122	88	103	89	101	96	92	95	99	98
Total	578	550	556	549	561	558	561	570	577	578

Oak Creek Elementary School

Historical Enrollment

Grade	2006-07	2007-08	2008-09	2009-10	2010-11	2011-12	2012-13	2013-14	2014-15	2015-16
K	98	130	124	103	121	75	99	106	67	73
1	126	109	137	105	102	117	110	98	120	104
2	114	121	104	118	100	103	117	95	100	128
3	98	110	120	93	121	91	99	110	94	101
4	86	93	103	93	96	118	93	104	103	103
5	83	87	98	89	96	95	116	91	109	118
Total	605	650	686	601	636	599	634	604	593	627

Oak Creek Elementary School

Projected Enrollment

Grade	2016-17	2017-18	2018-19	2019-20	2020-21	2021-22	2022-23	2023-24	2024-25	2025-26
K	79	76	79	82	82	82	83	83	84	84
1	91	98	94	98	100	101	102	103	103	104
2	105	92	99	95	99	103	103	104	104	104
3	127	106	91	99	95	99	103	103	104	104
4	104	130	108	94	101	98	101	104	105	107
5	109	108	137	113	98	106	102	106	109	110
Total	615	610	608	581	575	589	594	603	609	613

Olentangy Local Schools

Olentangy Meadows Elementary School

Historical Enrollment

Grade	2006-07	2007-08	2008-09	2009-10	2010-11	2011-12	2012-13	2013-14	2014-15	2015-16
K	100	118	122	120	156	85	84	122	122	120
1	103	121	129	124	134	138	120	95	146	124
2	77	105	116	114	116	141	99	125	97	133
3	104	81	107	101	118	119	101	101	135	85
4	98	107	93	91	106	119	81	99	106	136
5	85	97	119	77	91	109	92	84	108	104
Total	567	629	686	627	721	711	577	626	714	702

Olentangy Meadows Elementary School

Projected Enrollment

Grade	2016-17	2017-18	2018-19	2019-20	2020-21	2021-22	2022-23	2023-24	2024-25	2025-26
K	115	110	114	117	120	121	121	122	123	123
1	134	129	123	128	130	134	136	136	137	137
2	121	131	126	121	125	128	130	131	132	132
3	132	120	130	125	120	124	127	129	130	131
4	85	132	119	129	124	118	121	125	129	129
5	141	88	136	123	133	128	122	128	130	134
Total	728	710	748	743	752	753	757	771	781	786

Scioto Ridge Elementary School

Historical Enrollment

Grade	2006-07	2007-08	2008-09	2009-10	2010-11	2011-12	2012-13	2013-14	2014-15	2015-16
K	105	114	94	44	99	73	83	68	51	69
1	127	125	116	124	108	112	87	88	80	65
2	100	126	131	127	107	103	107	84	83	86
3	129	104	129	133	108	105	108	115	90	86
4	93	123	115	135	116	110	106	114	111	88
5	101	97	117	114	111	116	110	99	117	110
Total	655	689	702	677	649	619	601	568	532	504

Scioto Ridge Elementary School

Projected Enrollment

Grade	2016-17	2017-18	2018-19	2019-20	2020-21	2021-22	2022-23	2023-24	2024-25	2025-26
K	66	63	65	69	68	68	69	69	70	70
1	83	78	75	78	81	81	81	82	81	83
2	64	81	77	74	77	80	79	79	80	81
3	92	68	85	82	78	82	85	85	85	86
4	85	91	68	85	83	79	82	85	85	85
5	87	86	91	68	85	81	77	81	84	84
Total	477	467	461	456	472	471	473	481	485	489

Olentangy Local Schools

Tyler Run Elementary School

Historical Enrollment

Grade	2006-07	2007-08	2008-09	2009-10	2010-11	2011-12	2012-13	2013-14	2014-15	2015-16
K	119	91	94	112	99	62	65	89	70	84
1	111	136	109	111	114	102	89	82	99	90
2	115	109	130	106	102	113	104	93	83	100
3	105	113	115	131	97	106	113	110	93	83
4	123	104	112	117	119	96	104	110	115	95
5	98	125	106	116	114	122	102	107	113	117
Total	671	678	666	693	645	601	577	591	573	569

Tyler Run Elementary School

Projected Enrollment

Grade	2016-17	2017-18	2018-19	2019-20	2020-21	2021-22	2022-23	2023-24	2024-25	2025-26
K	78	75	79	81	81	82	82	83	83	83
1	102	95	90	93	97	98	98	99	100	100
2	93	104	97	92	95	101	101	101	102	102
3	101	93	105	99	94	98	102	102	102	103
4	85	103	95	107	100	95	99	102	103	103
5	97	87	105	98	110	103	98	102	105	106
Total	556	557	571	570	577	577	580	589	595	597

Walnut Creek Elementary

Historical Enrollment

Grade	2006-07	2007-08	2008-09	2009-10	2010-11	2011-12	2012-13	2013-14	2014-15	2015-16
K	129	116	106	80	78	55	89	60	92	79
1	114	133	118	111	94	79	113	108	89	100
2	121	119	140	91	114	94	107	112	115	93
3	120	106	106	95	91	114	116	114	115	117
4	89	120	94	120	97	103	130	112	113	109
5	91	85	101	85	120	96	117	129	117	113
Total	664	679	665	582	594	541	672	635	641	611

Walnut Creek Elementary

Projected Enrollment

Grade	2016-17	2017-18	2018-19	2019-20	2020-21	2021-22	2022-23	2023-24	2024-25	2025-26
K	84	80	83	86	87	88	87	88	89	89
1	102	106	102	105	108	110	111	110	112	113
2	104	104	110	105	110	114	114	115	116	116
3	96	106	107	109	108	112	116	116	118	119
4	114	95	105	106	111	107	110	114	116	116
5	110	115	94	105	105	112	107	111	115	117
Total	610	606	601	616	629	643	645	654	666	670

Olentangy Local Schools

Wyandot Run Elementary School

Historical Enrollment

Grade	2006-07	2007-08	2008-09	2009-10	2010-11	2011-12	2012-13	2013-14	2014-15	2015-16
K	130	124	72	133	101	64	64	65	73	85
1	122	158	83	86	87	98	92	74	79	83
2	148	128	119	86	86	94	101	93	79	87
3	117	125	98	87	89	94	102	97	100	83
4	111	121	102	123	94	96	94	107	108	106
5	150	108	94	99	127	101	101	93	114	113
Total	778	764	568	614	584	547	554	529	553	557

Wyandot Run Elementary School

Projected Enrollment

Grade	2016-17	2017-18	2018-19	2019-20	2020-21	2021-22	2022-23	2023-24	2024-25	2025-26
K	74	71	74	76	76	77	77	78	78	79
1	100	87	83	86	90	90	91	89	92	92
2	89	106	93	88	91	87	95	96	97	97
3	90	91	110	96	91	94	98	101	99	99
4	88	95	97	117	102	97	101	104	105	106
5	110	93	99	102	122	106	101	105	110	111
Total	551	543	556	565	572	551	563	573	581	584

Middle Schools

Berkshire Middle School

Historical Enrollment

Grade	2006-07	2007-08	2008-09	2009-10	2010-11	2011-12	2012-13	2013-14	2014-15	2015-16
6						295	273	320	332	319
7						254	303	287	333	337
8						228	261	300	286	340
Total						777	837	907	951	996

Berkshire Middle School

Projected Enrollment

Grade	2016-17	2017-18	2018-19	2019-20	2020-21	2021-22	2022-23	2023-24	2024-25	2025-26
6	330	370	326	328	345	345	347	332	345	356
7	331	340	382	337	338	357	356	358	343	356
8	340	335	345	388	342	343	362	362	364	348
Total	1,001	1,045	1,053	1,053	1,025	1,045	1,065	1,052	1,052	1,060

Hyatts Middle School

Historical Enrollment

Grade	2006-07	2007-08	2008-09	2009-10	2010-11	2011-12	2012-13	2013-14	2014-15	2015-16
6		202	197	257	257	281	286	282	286	312
7		201	208	202	253	225	252	283	290	290
8		175	195	212	199	231	220	252	293	297
Total		578	600	671	709	737	758	817	869	899

Hyatts Middle School

Projected Enrollment

Grade	2016-17	2017-18	2018-19	2019-20	2020-21	2021-22	2022-23	2023-24	2024-25	2025-26
6	293	298	251	274	232	266	257	245	255	267
7	317	296	301	254	277	234	270	259	248	257
8	299	327	306	313	264	287	243	280	268	257
Total	909	921	858	841	773	787	770	784	771	781

Olentangy Local Schools

Olentangy Liberty Middle School

Historical Enrollment

Grade	2006-07	2007-08	2008-09	2009-10	2010-11	2011-12	2012-13	2013-14	2014-15	2015-16
6	331	205	262	251	269	275	283	252	251	301
7	316	240	220	265	257	272	279	281	252	247
8	317	222	248	227	274	252	274	278	279	262
Total	964	667	730	743	800	799	836	811	782	810

Olentangy Liberty Middle School

Projected Enrollment

Grade	2016-17	2017-18	2018-19	2019-20	2020-21	2021-22	2022-23	2023-24	2024-25	2025-26
6	286	256	222	252	235	277	259	248	257	270
7	300	285	255	220	252	234	276	258	246	256
8	251	308	291	260	225	257	239	282	264	253
Total	837	849	768	732	712	768	774	788	767	779

Olentangy Orange Middle School

Historical Enrollment

Grade	2006-07	2007-08	2008-09	2009-10	2010-11	2011-12	2012-13	2013-14	2014-15	2015-16
6	302	292	330	386	385	256	281	299	308	328
7	287	292	306	341	388	233	265	282	307	315
8	270	282	297	309	339	253	246	270	282	305
Total	859	866	933	1,036	1,112	742	792	851	897	948

Olentangy Orange Middle School

Projected Enrollment

Grade	2016-17	2017-18	2018-19	2019-20	2020-21	2021-22	2022-23	2023-24	2024-25	2025-26
6	355	360	325	380	353	337	338	323	335	347
7	335	363	367	330	387	359	343	345	330	342
8	318	341	369	372	335	393	366	349	350	334
Total	1,008	1,064	1,061	1,082	1,075	1,089	1,047	1,017	1,015	1,023

Olentangy Shanahan Middle School

Historical Enrollment

Grade	2006-07	2007-08	2008-09	2009-10	2010-11	2011-12	2012-13	2013-14	2014-15	2015-16
6	312	250	273	307	312	308	317	343	394	418
7	281	254	254	278	310	274	329	333	357	399
8	251	231	254	255	277	267	282	335	339	360
Total	844	735	781	840	899	849	928	1,011	1,090	1,177

Olentangy Shanahan Middle School

Projected Enrollment

Grade	2016-17	2017-18	2018-19	2019-20	2020-21	2021-22	2022-23	2023-24	2024-25	2025-26
6	423	401	431	450	440	445	427	409	424	435
7	431	436	413	445	464	453	458	440	421	437
8	403	437	443	419	451	472	459	464	447	427
Total	1,257	1,274	1,287	1,314	1,355	1,370	1,344	1,313	1,292	1,299

Olentangy Local Schools

High Schools

Liberty High School
Historical Enrollment

Grade	2006-07	2007-08	2008-09	2009-10	2010-11	2011-12	2012-13	2013-14	2014-15	2015-16
9	383	367	355	387	393	422	479	487	534	577
10	325	383	347	356	382	404	420	481	484	532
11	301	323	370	339	352	401	392	410	470	489
12	322	305	336	375	323	364	406	400	415	463
Total	1,331	1,378	1,408	1,457	1,450	1,591	1,697	1,778	1,903	2,061

Liberty High School
Projected Enrollment

Grade	2016-17	2017-18	2018-19	2019-20	2020-21	2021-22	2022-23	2023-24	2024-25	2025-26
9	558	541	624	592	566	484	534	465	546	511
10	576	555	539	622	589	562	482	532	462	543
11	526	568	547	531	613	580	555	473	523	455
12	492	526	568	547	531	613	581	555	474	524
Total	2,152	2,190	2,278	2,292	2,299	2,239	2,152	2,025	2,005	2,033

Olentangy High School
Historical Enrollment

Grade	2006-07	2007-08	2008-09	2009-10	2010-11	2011-12	2012-13	2013-14	2014-15	2015-16
9	431	484	277	317	311	336	390	418	453	481
10	396	441	255	281	326	312	339	393	420	450
11	331	391	221	255	287	334	317	345	400	419
12	310	337	388	229	245	285	334	314	340	391
Total	1,468	1,653	1,141	1,082	1,169	1,267	1,380	1,470	1,613	1,741

Olentangy High School
Projected Enrollment

Grade	2016-17	2017-18	2018-19	2019-20	2020-21	2021-22	2022-23	2023-24	2024-25	2025-26
9	521	567	605	606	600	611	634	634	635	626
10	484	523	569	606	608	602	612	635	636	636
11	458	491	530	577	615	617	611	621	644	644
12	413	451	484	523	569	606	608	601	612	635
Total	1,876	2,032	2,188	2,312	2,392	2,436	2,465	2,491	2,527	2,541

Orange High School
Historical Enrollment

Grade	2006-07	2007-08	2008-09	2009-10	2010-11	2011-12	2012-13	2013-14	2014-15	2015-16
9			309	312	321	358	403	413	473	461
10			259	312	327	326	366	395	413	481
11			233	261	327	334	330	361	403	410
12				228	264	325	327	333	362	406
Total			801	1,113	1,239	1,343	1,426	1,502	1,651	1,758

Orange High School
Projected Enrollment

Grade	2016-17	2017-18	2018-19	2019-20	2020-21	2021-22	2022-23	2023-24	2024-25	2025-26
9	523	539	558	595	625	558	622	608	595	594
10	463	525	540	560	597	628	560	625	610	598
11	485	467	529	543	564	601	630	563	628	612
12	410	485	467	529	543	564	601	631	563	628
Total	1,881	2,016	2,094	2,227	2,329	2,351	2,413	2,427	2,396	2,432

CONCLUSION

As with any projections, the District should continue to pay close attention to birth counts, enrollment in the elementary schools, housing growth, and demographics. Each of these factors will have an impact on future student enrollment.

FutureThink is pleased to have had the opportunity to provide the District with enrollment projection services. We hope this document will provide the necessary information to make informed decisions about the future of the Olentangy Local Schools.