



FutureThink

Formerly DeJONG-HEALY

# FINAL REPORT



Enrollment Projection Update  
October 2014

### ACKNOWLEDGEMENTS

---

**FutureThink** would like to extend our appreciation to the Olentangy Local Schools for choosing us to assist them in developing these enrollment projections. In addition, thank you to Michelle Murphy and Ralph Au.

Future growth in the Olentangy Local School District Community will have a significant impact on the school facilities and student population. The following information will continue to provide the District with a valuable planning tool to assist in determining the future direction of its school system.

As a consulting team, we appreciate this opportunity to serve your school community as you embark on your vision for the future of education in the Olentangy Local Schools.

Tracy Healy

*President*

## INTRODUCTION

---

**FutureThink** has provided enrollment projections for the Olentangy Local Schools annually since 1998. For several years, enrollment was projected using a methodology based on new housing starts due to the explosive growth seen in the District primarily from 1997-2005. Single-family building permits peaked in 2004 at over 1,700 permits. In 2006, single-family permits dropped to 768. Currently, just under 250 permits have been issued through June/July of this year.

### 2008 Projections

In 2008, **FutureThink** developed enrollment projections based on a methodology to better reflect the economic conditions of the time. Three basic assumptions were made:

- Kindergarten enrollment would continue to be negatively impacted by the reduced housing starts for the next few years. It would then start to level off.
- First grade growth would continue as it has. Traditionally, there is an increase in first grade enrollment from kindergarten the previous year. This is due, in great part, to parents choosing a private, all-day kindergarten program then enrolling their child in the district for first grade.
- Grades 2-12 would see a greater growth than previously anticipated through 2009-10 due to students leaving the private and parochial schools for financial reasons. After 2009-10, the growth rate would then slow.

### 2009 Projections

While the enrollment projections from 2008 were highly accurate [within 10 students total for the first year], there was concern raised regarding the kindergarten enrollment. Actual kindergarten enrollment for 2009-10 was 71 students higher than projected. Based on this, kindergarten enrollment was projected to grow at 4.6% in 2010-11, from a base of 1,344 students [kindergarten registration count]. Following 2010-11, growth was projected to be approximately 0.5% from the previous year until 2019-20.

## Olentangy Local Schools

### 2010 Projections

While the enrollment projections from 2009 were within less than 1 percent of the actual enrollment, there was again concern raised regarding the kindergarten enrollment. Actual kindergarten enrollment for 2010-11 was 63 students lower than projected.

To better address kindergarten enrollment, births in the area were incorporated into the projections for years 2011-12 – 2013-14. In 2013-14, a growth factor of 7.2% was applied to account for growth due to the implementation of all-day kindergarten. Starting in the 2014-15 school year, a 0.5% growth factor was applied to the previous year's enrollment. For first grade, the average survival ratio of the past 2 years was used for kindergarten to 1<sup>st</sup> grade through 2013-14. Starting in the 2014-15 school year, the growth factor was reduced to 6% to account for the increase in kindergarten enrollment due to all-day kindergarten implementation.

### 2011 Projections

Overall, the methodology used in 2010 was successful. Kindergarten enrollment was within 7 students of the projection. The difference between the actual and projected enrollment for Pre-K-12 was 83 students or .49 percent.

For 2011, we used the same methodology with two minor modifications. Due to the change in legislation regarding all-day Kindergarten, we did not incorporate the additional growth factor for kindergarten in the 2013-14 school year. We incorporated births in the area for years 2012-13 – 2013-14. For the years 2014-15 – 2021-22, a 0.5% growth factor was applied to the previous year's enrollment. For first grade, the average survival ratio of the past 2 years was used.

Additionally, an "end of year" projection for the 2011-12 school year was included.

## Olentangy Local Schools

### 2012 & 2013 Projections

Overall, the methodologies used in 2010 and 2011 were successful. The difference between the actual and projected enrollment for Pre-K-12 was 117 students or .66 percent.

For 2012 & 2013, we used the same methodology as 2011 with one modification. The preschool projection was based on kindergarten enrollment rather than simply adding 34 students each year as we did in 2011.

### 2014 Projections

This year, we have provided two sets of projections:

- One using the same methodology as last year
- The second incorporating a housing factor.

The second projection adds a housing component to the methodology. For the 2015-16 school year, the same methodology as above was used. For subsequent years, a housing factor was incorporated. This factor was determined by the survival ratios which occurred in the 2005-06 and 2006-07 school years. New single-family housing development at that time averaged in the 700 range.

As with any enrollment projection, there are a number of factors that can influence future growth—either positively or negatively. Due to the uncertain economic conditions we are currently living in, it is impossible to know how quickly the housing market will recover and to what extent.

## Olentangy Local Schools

### ENROLLMENT COMPARISON

The difference between the actual and projected enrollment for the 2014-15 school year is less than one-tenth of 1 percent.

The grades with the greatest difference were 1<sup>st</sup> grade and 9<sup>th</sup> grade at 38 and 29, respectively.

The following table illustrates the difference by grade.

Olentangy Local School District				
	Actual, 2014-15*	Projected	Difference	Percentage
<b>Pre-K</b>	<b>318</b>	<b>306</b>	<b>-12</b>	<b>-3.77%</b>
K	1,219	1,241	22	1.80%
1	1,492	1,454	-38	-2.55%
2	1,430	1,441	11	0.77%
3	1,591	1,579	-12	-0.75%
4	1,598	1,599	1	0.06%
5	1,652	1,627	-25	-1.51%
<b>K-5 Total</b>	<b>8,982</b>	<b>8,941</b>	<b>-41</b>	<b>-0.46%</b>
6	1,571	1,578	7	0.45%
7	1,539	1,529	-10	-0.65%
8	1,479	1,494	15	1.01%
<b>6-8 Total</b>	<b>4,589</b>	<b>4,601</b>	<b>12</b>	<b>0.26%</b>
9	1,460	1,489	29	1.99%
10	1,317	1,332	15	1.14%
11	1,273	1,272	-1	-0.08%
12	1,117	1,128	11	0.98%
<b>9-12 Total</b>	<b>5,167</b>	<b>5,221</b>	<b>54</b>	<b>1.05%</b>
<b>Total</b>	<b>19,056</b>	<b>19,069</b>	<b>13</b>	<b>0.07%</b>

Source: Olentangy Local School District

\* as of August 14, 2014

## Olentangy Local Schools

### HISTORICAL ENROLLMENT

Over the past ten years, the PreK-12 enrollment in the Olentangy Local Schools has increased by 8,245 students or 76 percent. Total enrollment for the 2014-15 school year is 19,056, an increase of 748 students, or 4%, from the previous school year.

The following table and graphs illustrate the District's enrollment history from 2005-06 through 2014-15.

Olentangy Local School District  
Historical Enrollment

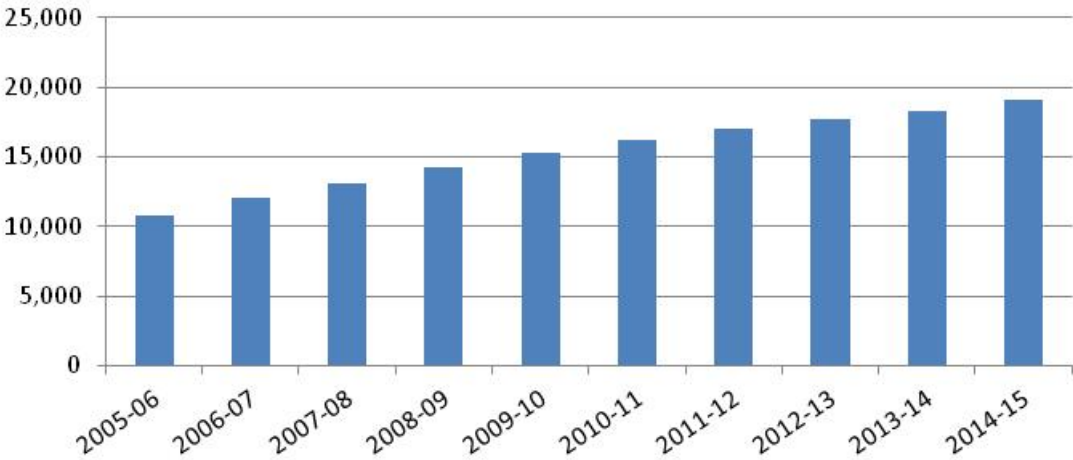
	2005-06	2006-07	2007-08	2008-09	2009-10	2010-11	2011-12	2012-13	2013-14	2014-15
<b>Pre-K</b>	<b>127</b>	<b>147</b>	<b>172</b>	<b>234</b>	<b>300</b>	<b>276</b>	<b>293</b>	<b>321</b>	<b>288</b>	<b>318</b>
K	1,080	1,150	1,203	1,253	1,319	1,343	1,341	1,241	1,282	1,219
1	1,011	1,237	1,320	1,318	1,422	1,488	1,477	1,503	1,404	1,492
2	1,023	1,087	1,270	1,334	1,349	1,460	1,499	1,520	1,516	1,430
3	934	1,069	1,123	1,320	1,356	1,378	1,487	1,559	1,562	1,591
4	870	1,015	1,106	1,169	1,362	1,399	1,410	1,510	1,584	1,598
5	896	927	1,032	1,168	1,167	1,379	1,408	1,450	1,525	1,652
<b>K-5 Total</b>	<b>5,814</b>	<b>6,485</b>	<b>7,054</b>	<b>7,562</b>	<b>7,975</b>	<b>8,447</b>	<b>8,622</b>	<b>8,783</b>	<b>8,873</b>	<b>8,982</b>
6	849	942	948	1,061	1,204	1,217	1,415	1,440	1,496	1,571
7	803	887	982	985	1,086	1,203	1,258	1,428	1,466	1,539
8	756	838	906	993	1,002	1,091	1,231	1,283	1,435	1,479
<b>6-8 Total</b>	<b>2,408</b>	<b>2,667</b>	<b>2,836</b>	<b>3,039</b>	<b>3,292</b>	<b>3,511</b>	<b>3,904</b>	<b>4,151</b>	<b>4,397</b>	<b>4,589</b>
9	689	815	848	948	1,023	1,043	1,116	1,272	1,318	1,460
10	629	725	822	863	952	1,042	1,042	1,125	1,269	1,317
11	629	640	728	839	871	968	1,069	1,039	1,116	1,273
12	515	626	641	720	838	875	974	1,067	1,047	1,117
<b>9-12 Total</b>	<b>2,462</b>	<b>2,806</b>	<b>3,039</b>	<b>3,370</b>	<b>3,684</b>	<b>3,928</b>	<b>4,201</b>	<b>4,503</b>	<b>4,750</b>	<b>5,167</b>
<b>Total</b>	<b>10,811</b>	<b>12,105</b>	<b>13,101</b>	<b>14,205</b>	<b>15,251</b>	<b>16,162</b>	<b>17,020</b>	<b>17,758</b>	<b>18,308</b>	<b>19,056</b>

Source: Olentangy Local School District

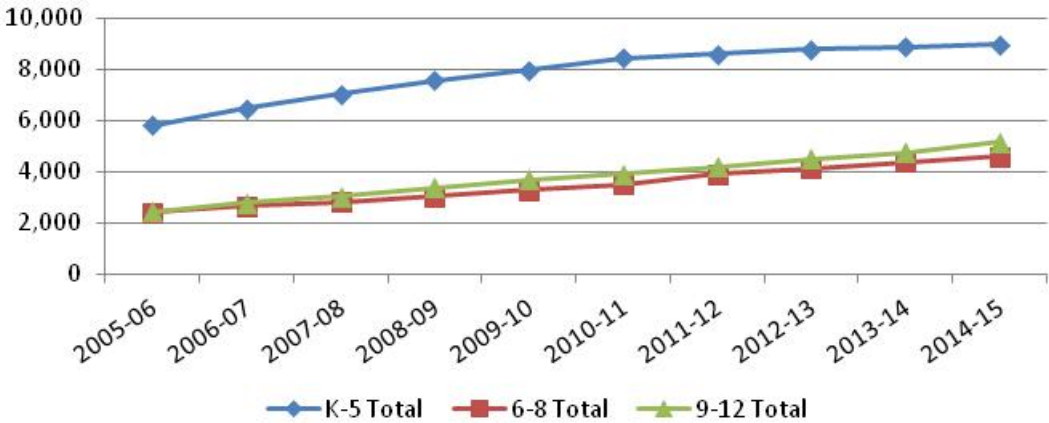
\* as of August 22, 2014

Olentangy Local Schools

Olentangy Local School District  
Historical Enrollment



Olentangy Local School District  
Historical Enrollment by Grade Group





## LIVE BIRTH DATA

---

Utilization of live birth data is recommended when projecting future kindergarten enrollments. This data provides a helpful overall trend. Large bubbles in birth counts, either up or down, can also be planned for or anticipated by the District.

In addition, the live birth counts are used in determining a birth-to-kindergarten survival ratio. This ratio identifies the percentage of children born in a representative area who attend kindergarten in the District five years later. The survival ratios for birth-to-kindergarten as well as grades 1-12 can be found later in this report.

The Ohio Department of Health [ODH] data warehouse provides information about live birth events for Ohio residents. Information about events occurring outside of Ohio to Ohio residents is included. Information about events occurring inside Ohio to non-Ohio residents is not included.

Data is arranged by the residence of the mother. For example, if a mother lives in Powell, Delaware County but delivers her baby in Columbus, Franklin County, the birth is counted in Powell, Delaware County.

The number of live births is recorded by:

- ▶ State
- ▶ County
- ▶ City/Town
- ▶ Census Tract
- ▶ Address [not available to the public]

Live birth counts are different from live birth rates. The live birth count is simply the actual number of live births. A birth rate is the number of births per 1,000 women in a specified population group. Birth rates are provided for counties and for 9 age groups from 10-14 years to 45+ years.

## Olentangy Local Schools

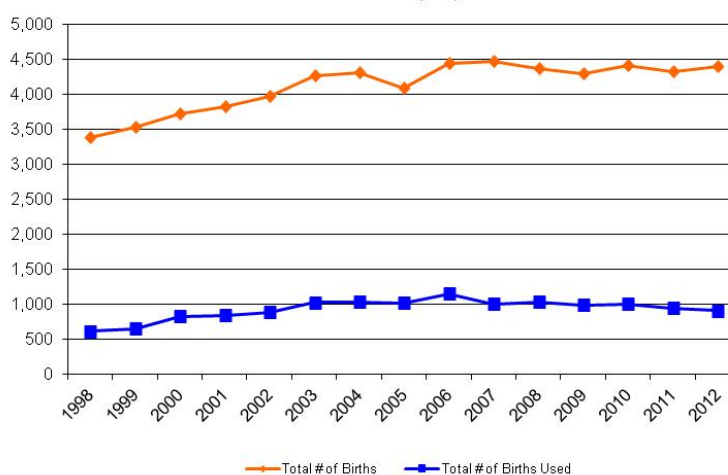
The following chart and graph include the live birth count for zip codes 43015, 43016, 43017, 43021, 43035, 43065, 43074, 43081, 43082, 43235, and 43240. However, upon analysis of the map on page 10, only zip codes 43035, 43065, and 43240 were used for projection purposes.

**Olentangy Local School District  
Live Birth Counts by Zip Code**

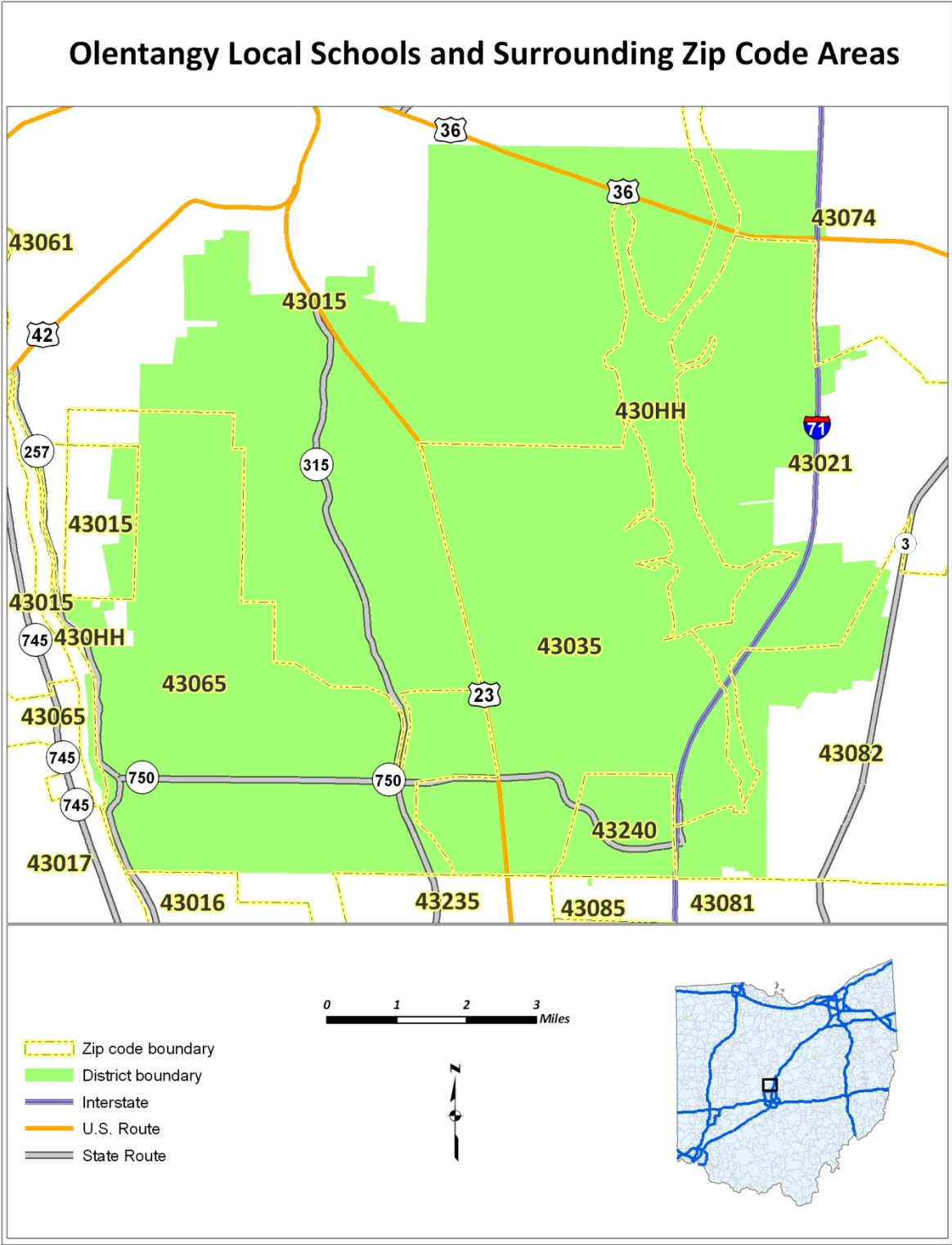
Year	43015	43016	43017	43021	43035	43065	43074	43081	43082	43235	43240	Total # of Births	Total # of Births Used
1998	467	275	481	55	192	410	92	703	220	480	4	3,379	606
1999	536	295	468	58	260	370	108	732	226	460	12	3,525	642
2000	525	296	470	65	317	469	99	701	301	437	34	3,714	820
2001	594	310	452	62	346	456	112	676	329	452	33	3,822	835
2002	646	361	466	71	358	481	117	675	354	397	36	3,962	875
2003	694	361	441	82	429	542	153	654	406	451	48	4,261	1,019
2004	678	419	449	94	434	522	154	650	413	421	67	4,301	1,023
2005	622	398	409	89	437	525	151	620	372	409	53	4,085	1,015
2006	694	465	428	103	507	570	137	668	368	439	63	4,442	1,140
2007	732	494	460	129	447	477	149	699	325	479	75	4,466	999
2008	683	495	436	112	447	505	142	702	308	467	71	4,368	1,023
2009	654	497	430	116	458	441	129	697	289	497	84	4,292	983
2010	640	519	463	113	430	489	139	711	310	515	73	4,402	992
2011	630	521	418	118	437	434	122	769	291	508	69	4,317	940
2012	669	589	430	112	401	428	129	733	260	573	70	4,394	899

Source: Ohio Department of Health, Vital Statistics

**Olentangy Local School District  
Birth Counts by Zip Code**



Olentangy Local Schools



## Olentangy Local Schools

### DEMOGRAPHICS

The Olentangy Local School District is located in southern Delaware County and includes Columbus City, Delaware City, Powell City, Berkshire Township, Berlin Township, Concord Township, Delaware Township, Genoa Township, Liberty Township, and Orange Township. General demographic data is included in the following tables for the areas located completely or partially in the District.

#### General Demographic Information

	Delaware County
Per Capita Income	\$26,708
Median Household Income	\$50,502
Persons Below Poverty	15.9%

Source: US Census, American Community Survey 2010

#### Total Population

	2000 Census	2010
Delaware County	109,989	174,214
Columbus City (part)	1,891	7,245
Delaware City	25,243	34,753
Powell City	6,247	11,500
Berkshire Township#	1,946	2,428
Berlin Township	3,315	6,498
Concord Township	4,507	9,294
Delaware Township*	1,559	1,964
Genoa Township	11,293	23,093
Liberty Township**	9,182	14,581
Orange Township	12,464	26,269

Source: ODOT Policy Research & Strategic Planning Office, August 2011

# does not include Galena or Sunbury villages

\* does not include Delaware City

\*\* does not include Delaware City or Powell City

## Olentangy Local Schools

Included are block group estimates and projections provided by ESRI Business Information Solutions (ESRI BIS). ESRI BIS uses a time series of estimates from the U.S. Census Bureau that includes the latest estimates and intercensal estimates adjusted for error of closure. The Census Bureau's time series is consistent, but testing has revealed improved accuracy by using a variety of sources to track county population trends.

ESRI BIS also employs a time series of building permits and housing starts plus residential deliveries. Finally, local data sources that tested well against Census 2000 are reviewed. Data sources are integrated and then analyzed by Census Block Groups.

Sources of data include:

- ▶ Supplementary Surveys of the Census Bureau
- ▶ Bureau of Labor Statistics' (BLS) Local Area Unemployment Statistics
- ▶ BLS Occupational Employment Statistics
- ▶ *InfoUSA*
- ▶ U.S. Bureau of the Census' Current Population Survey
- ▶ National Planning Association Data Service

The following table illustrates the current estimates and 5-year population projections based on block groups that comprise the school district, indicating areas of current and projected growth in selected age groups.

The total estimated 2013 population in the District is 78,880. This population is projected to increase by 8,654 people, or approximately 11% over a 5-year period. The 0-18 year-old population in the District currently totals 26,225. This population is projected to increase by 3,187 children, or approximately 12 percent.

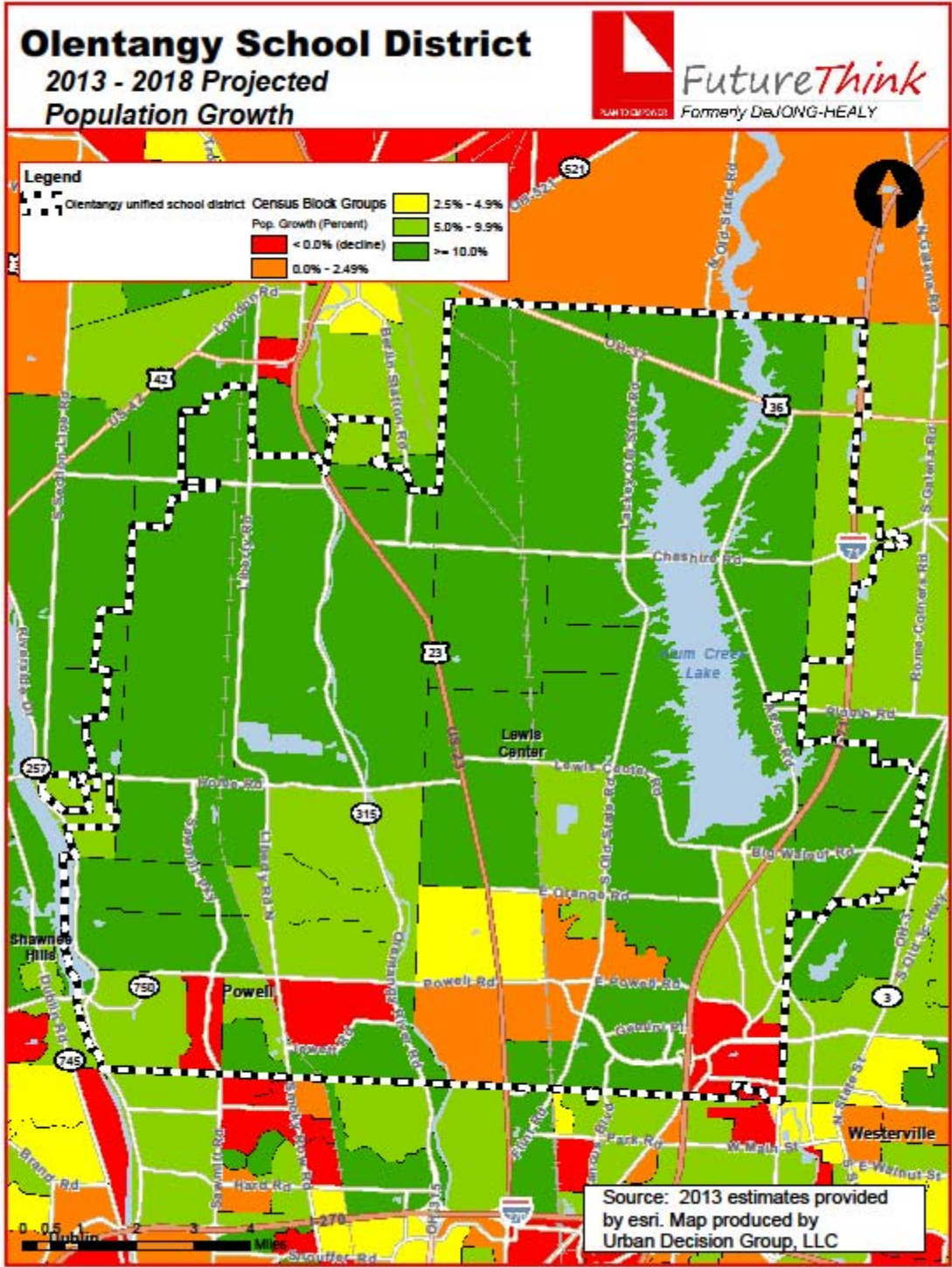
<b>Olentangy Local School District</b>	<b>2010</b>	<b>2013 Estimate</b>	<b>2018 Projection</b>
Total Population	73,731	78,880	87,534
Population Ages 0-4	6,307	6,334	6,937
Population Ages 5-9	7,828	7,707	8,213
Population Ages 10-14	6,522	7,777	8,816
Population Ages 15-18	4,018	4,407	5,446
Total Ages 0-18	24,675	26,225	29,412

Source: ESRI BIS

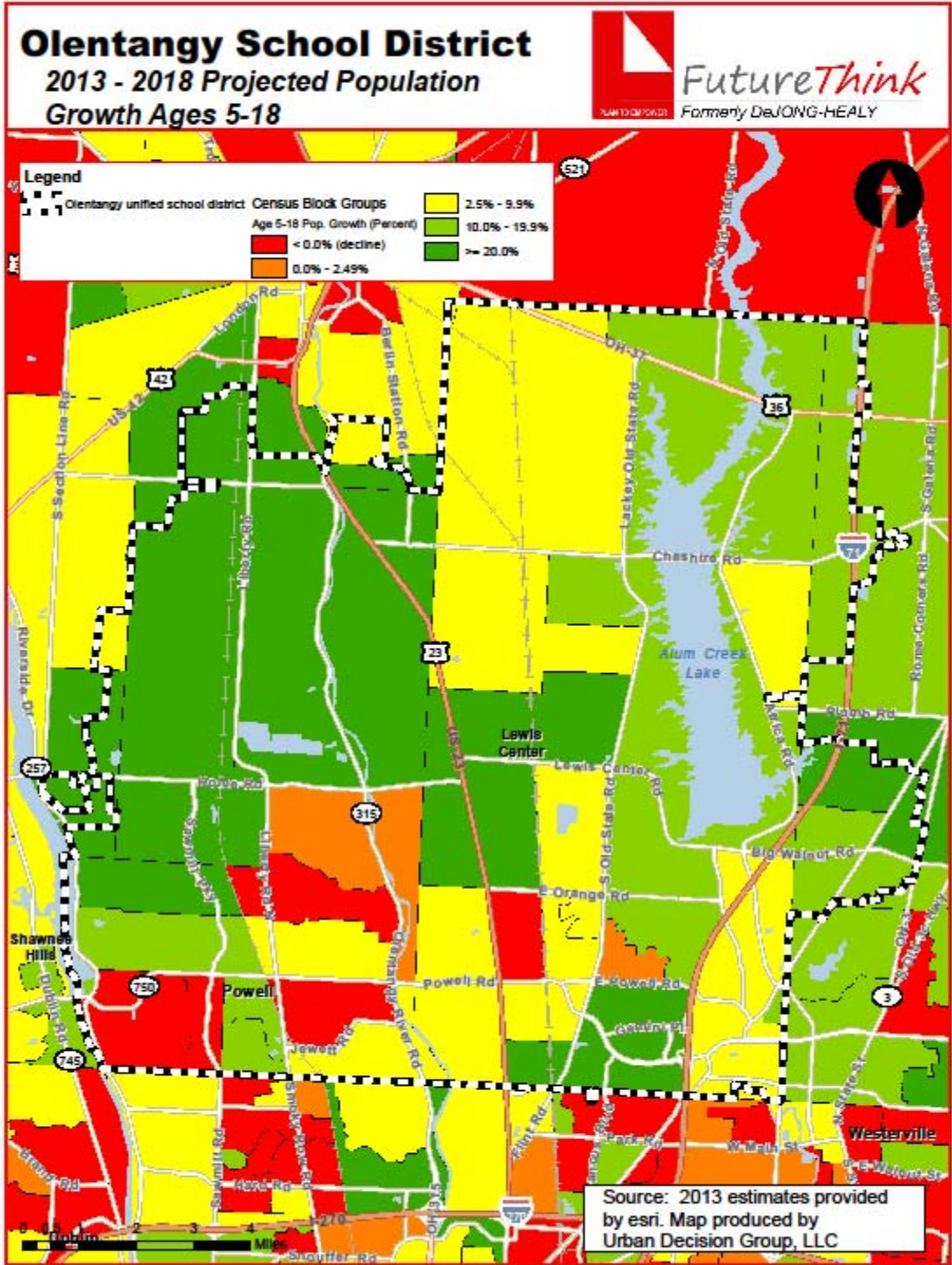
## Olentangy Local Schools

The maps on the following pages illustrate the data related to population and household income growth. The color coding identifies areas within the District that may be increasing or decreasing at different rates than others.

Olentangy Local Schools

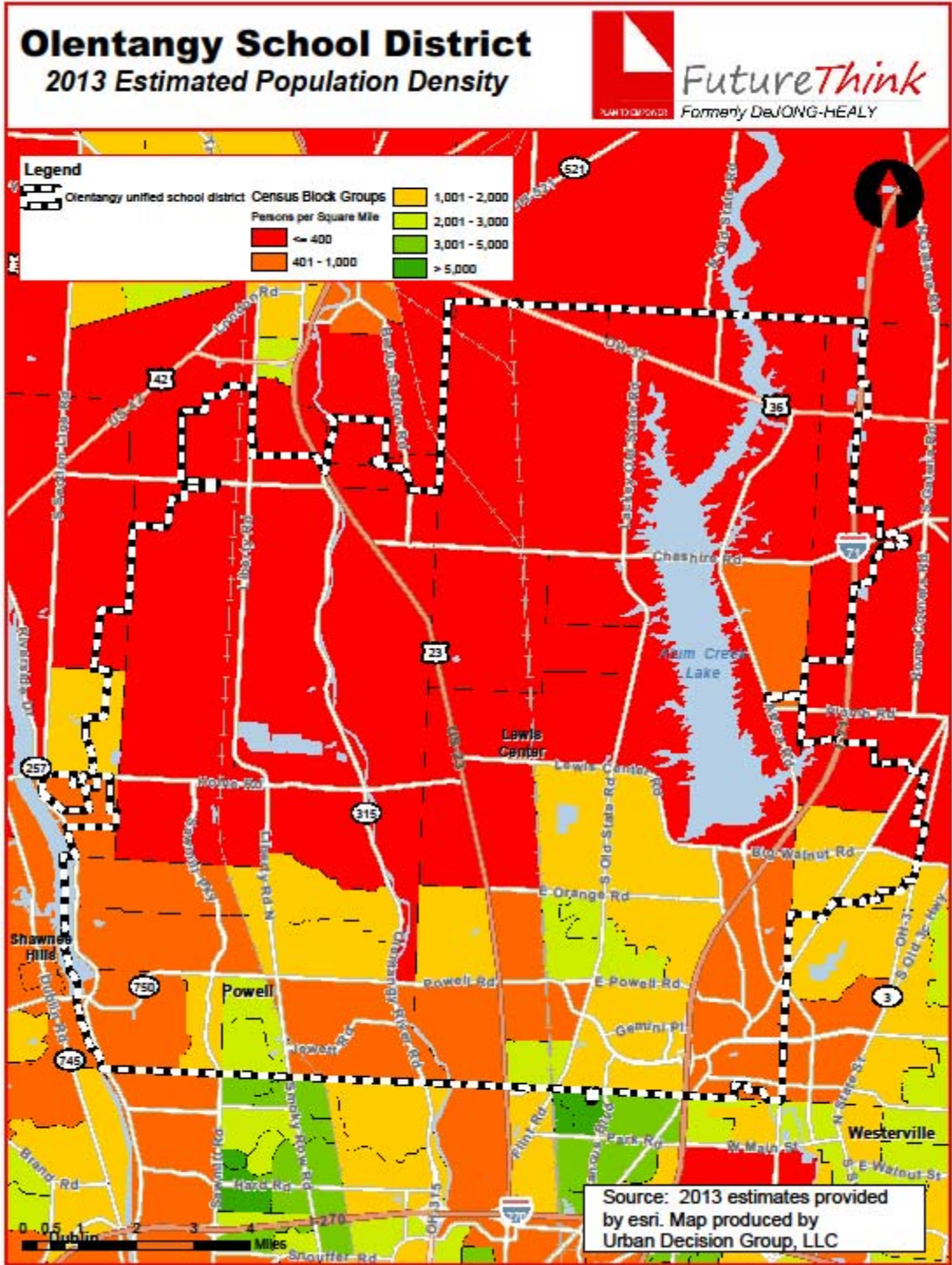


Olentangy Local Schools

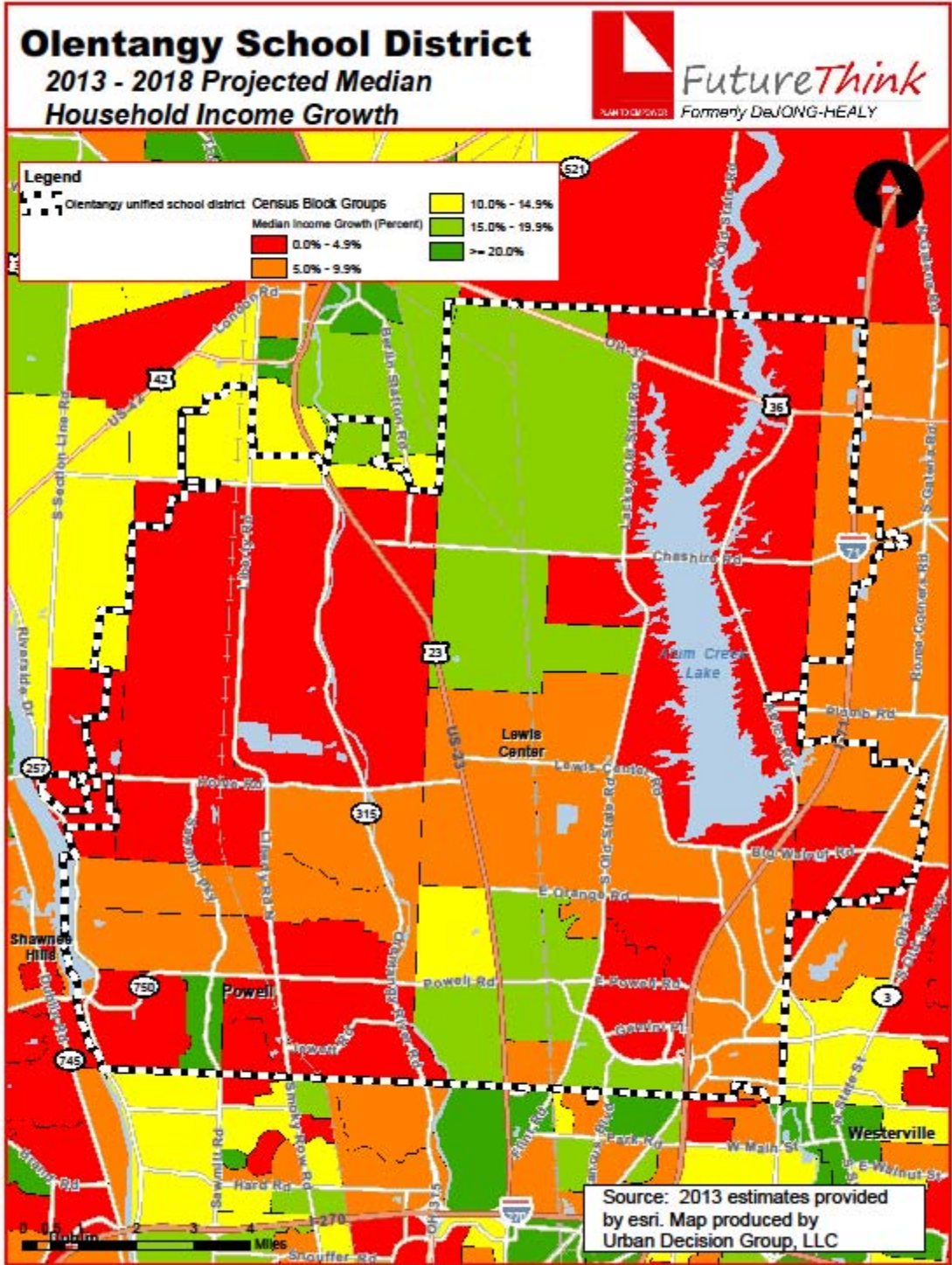




Olentangy Local Schools



Olentangy Local Schools



## Olentangy Local Schools

### HOUSING INFORMATION

The following chart illustrates housing trends in the Olentangy Local School District since 2003. The number of single-family permits peaked in 2004 then began to decline. In 2011, the permits totaled over 400 for the first time since 2007. For this year, the total through June/July is 248 permits, not including the City of Delaware. If this trend holds, the expectation would be that a total of 429 single-family permits would be issued in 2014. A second projected total was calculated to illustrate a faster growth rate. It assumes the greater of the 2013 total or the 2014 projected total for each municipality and township. It totals 557.

**Olentangy Local School District  
Single Family Building Permit Data**

Year	Berkshire Twp	Berlin Twp	Concord Twp	Delaware Twp	Genoa Twp	Liberty Twp	Orange Twp	Delaware City	City of Powell	City of Columbus	Total
2003	1	123	94	17	144	170	574	99	261	101	1,584
2004	8	97	72	4	154	179	767	102	209	139	1,731
2005	12	84	52	9	194	165	405	92	216	164	1,393
2006	20	66	13	8	96	102	216	72	138	37	768
2007	23	40	12	0	78	75	227	58	94	42	649
2008	8	30	12	0	44	69	142	23	41	18	387
2009	19	20	8	1	52	30	129	24	32	14	329
2010	6	35	9	0	52	45	117	52	34	20	370
2011	9	40	11	2	65	66	170	46	45	14	468
2012	11	26	13	6	62	104	160	53	50	53	538
2013	18	19	12	7	45	116	159	n/a	68	74	518
2014 YTD*	6	9	5	1	7	52	105	n/a	50	13	248
2014 Total - 1	10	15	9	2	12	89	180		86	26	429
2014 Total - 2	18	19	12	7	45	116	180		86	74	557

Source: Delaware County Regional Planning Commission; City of Powell; Delaware City; Columbus City

\* all through July 2014, except Columbus which is through June

Total 1 assumes an even growth rate for the remainder of the year

Total 2 is the greater of the following totals: 2013 or 2014 Total - 1

**Olentangy Local School District  
Multi-Family Family Building Permit Data**

Year	2-Units	3 & 4-Units	5+ Units	Total
2003	18	6	0	24
2004	28	9	0	37
2005	18	21	0	39
2006	26	40	0	66
2007	0	11	40	51
2008	30	84	0	114
2009	2	24	0	26
2010	4	0	0	4
2011	40	18	0	58
2012	48	9	25	82
2013	58	35	6	99
2014*	4	17	18	39

Source: SOCDs Building Permits Database

\* through May 2014

includes Powell & Unincorporated Area in Delaware County

## Olentangy Local Schools

### SURVIVAL RATIOS

The chart below demonstrates the changes in enrollment as students move through the system. Percentages greater than 100 indicate that there are more students than there were in the previous grade the previous year. In other words, there was growth and new students were added to the system. Percentages less than 100 indicate that there was decline or students left the system.

The following table illustrates the survival ratios used in developing the enrollment projections for the Olentangy Local Schools.

from	to	birth -> K	K->1	1->2	2->3	3->4	4->5	5->6	6->7	7->8	8->9	9->10	10->11	11->12
2005	2006	137.7%	114.5%	107.5%	104.5%	108.7%	106.6%	105.1%	104.5%	104.4%	107.8%	105.2%	101.7%	99.5%
2006	2007	137.5%	114.8%	102.7%	103.3%	103.5%	101.7%	102.3%	104.2%	102.1%	101.2%	100.9%	100.4%	100.2%
2007	2008	123.0%	109.6%	101.1%	103.9%	104.1%	105.6%	102.8%	103.9%	101.1%	104.6%	101.8%	102.1%	98.9%
2008	2009	128.9%	113.5%	102.4%	101.6%	103.2%	99.8%	103.1%	102.4%	101.7%	103.0%	100.4%	100.9%	99.9%
2009	2010	132.3%	112.8%	102.7%	102.1%	103.2%	101.2%	104.3%	99.9%	100.5%	104.1%	101.9%	101.7%	100.5%
2010	2011	117.6%	110.0%	100.7%	101.8%	102.3%	100.6%	102.6%	103.4%	102.3%	102.3%	99.9%	102.6%	100.6%
2011	2012	124.2%	112.1%	102.9%	104.0%	101.5%	102.8%	102.3%	100.9%	102.0%	103.3%	100.8%	99.7%	99.8%
2012	2013	125.3%	113.1%	100.9%	102.8%	101.6%	101.0%	103.2%	101.8%	100.5%	102.7%	99.8%	99.2%	100.8%
2013	2014	124.0%	116.4%	101.9%	104.9%	102.3%	104.3%	103.0%	102.9%	100.9%	101.7%	99.9%	100.3%	100.1%
	average	127.85%	112.973%	102.52%	103.2%	103.37%	102.6%	103.2%	102.7%	101.7%	103.427%	101.170%	100.962%	100.024%
	standard deviation	6.447%	2.084%	1.935%	1.128%	2.039%	2.220%	0.894%	1.464%	1.142%	1.851%	1.605%	1.075%	0.548%

## ENROLLMENT PROJECTIONS

---

Based on the current trends seen in the District, **FutureThink** has provided two sets of enrollment projections. The first projection uses the same methodology as last year, which is outlined below.

### Projection #1 – Last Year’s Model

#### Pre-K

The preschool projection is based on kindergarten enrollment. We used the average of the last 2 years, a percentage of 24.28 percent.

#### Kindergarten

For kindergarten, a 0.5% growth factor was applied to the previous year’s enrollment.

#### Grades 1-12

For grades 1-12, the average survival ratio of the past 2 years was applied.

### 2014-15 End of Year Projection

The 2014-15 “End of Year” projection was determined by applying the difference of .07% between the actual August 22, 2014 and previous projected enrollment for 2014-15 and adding it to the current enrollment.

For example, the current kindergarten enrollment is 1,219. By adding .07% [or 3 students] to that number, the end of year kindergarten enrollment is projected to be 1,222 students.

## Olentangy Local Schools

Using last year's model, student enrollment is projected to increase by 2,067 students in grades Pre-K-12 from the 2014-15 to the 2024-25 school year. The following table and graphs illustrate projected enrollments by grade and grade group through the 2024-25 school year.

**Olentangy Local School District  
Projected Enrollment - Last Year's Model**

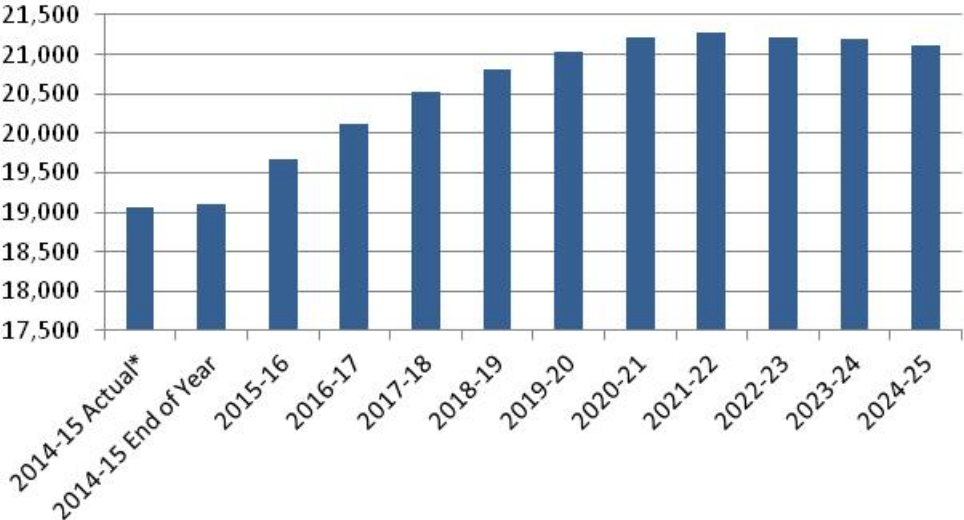
	2014-15 Actual*	2014-15 End of Year	2015-16	2016-17	2017-18	2018-19	2019-20	2020-21	2021-22	2022-23	2023-24	2024-25
<b>Pre-K</b>	<b>318</b>	<b>319</b>	<b>299</b>	<b>300</b>	<b>302</b>	<b>303</b>	<b>305</b>	<b>306</b>	<b>308</b>	<b>309</b>	<b>311</b>	<b>312</b>
K	1,219	1,222	1,229	1,235	1,241	1,247	1,253	1,260	1,266	1,272	1,279	1,285
1	1,492	1,496	1,403	1,410	1,417	1,424	1,431	1,438	1,445	1,453	1,460	1,467
2	1,430	1,434	1,517	1,422	1,429	1,436	1,443	1,451	1,458	1,465	1,472	1,480
3	1,591	1,595	1,490	1,575	1,477	1,484	1,491	1,499	1,506	1,514	1,522	1,529
4	1,598	1,602	1,627	1,519	1,606	1,506	1,513	1,521	1,528	1,536	1,544	1,551
5	1,652	1,656	1,645	1,670	1,559	1,648	1,545	1,553	1,561	1,569	1,576	1,584
<b>K-5 Total</b>	<b>8,982</b>	<b>9,005</b>	<b>8,911</b>	<b>8,831</b>	<b>8,729</b>	<b>8,745</b>	<b>8,676</b>	<b>8,722</b>	<b>8,764</b>	<b>8,809</b>	<b>8,853</b>	<b>8,896</b>
6	1,571	1,575	1,708	1,696	1,721	1,607	1,699	1,593	1,601	1,609	1,617	1,625
7	1,539	1,543	1,612	1,748	1,735	1,762	1,645	1,739	1,630	1,639	1,647	1,655
8	1,479	1,483	1,554	1,650	1,789	1,776	1,803	1,683	1,780	1,669	1,677	1,685
<b>6-8 Total</b>	<b>4,589</b>	<b>4,601</b>	<b>4,874</b>	<b>5,094</b>	<b>5,245</b>	<b>5,145</b>	<b>5,147</b>	<b>5,015</b>	<b>5,011</b>	<b>4,917</b>	<b>4,941</b>	<b>4,965</b>
9	1,460	1,464	1,517	1,589	1,687	1,829	1,816	1,843	1,721	1,820	1,706	1,714
10	1,317	1,320	1,462	1,514	1,586	1,684	1,826	1,813	1,840	1,718	1,817	1,703
11	1,273	1,276	1,317	1,459	1,511	1,583	1,680	1,821	1,808	1,836	1,714	1,812
12	1,117	1,120	1,282	1,323	1,465	1,517	1,589	1,687	1,829	1,816	1,844	1,721
<b>9-12 Total</b>	<b>5,167</b>	<b>5,180</b>	<b>5,578</b>	<b>5,885</b>	<b>6,249</b>	<b>6,613</b>	<b>6,911</b>	<b>7,164</b>	<b>7,198</b>	<b>7,190</b>	<b>7,081</b>	<b>6,950</b>
<b>Total</b>	<b>19,056</b>	<b>19,105</b>	<b>19,662</b>	<b>20,110</b>	<b>20,525</b>	<b>20,806</b>	<b>21,039</b>	<b>21,207</b>	<b>21,281</b>	<b>21,225</b>	<b>21,186</b>	<b>21,123</b>

Source: FutureThink

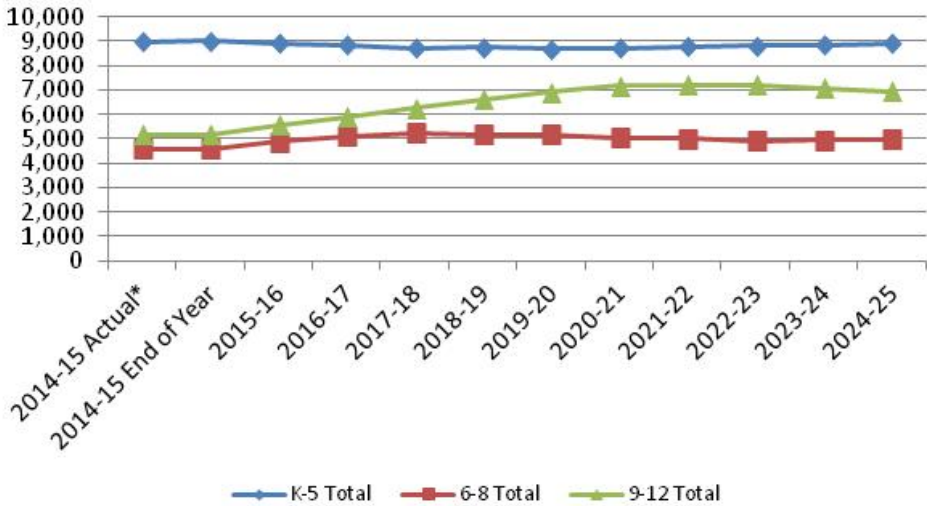
\* as of August 22, 2014

Olentangy Local Schools

Olentangy Local School District  
Projected Enrollment



Olentangy Local School District  
Projected Enrollment by Grade Group



## Olentangy Local Schools

### Projection #2 – Housing Model

The second projection adds a housing component to the methodology. For the 2015-16 school year, the same methodology as above was used. For subsequent years, a housing factor was incorporated. This factor was determined by the survival ratios which occurred in the 2005-06 and 2006-07 school years. New single-family housing development at that time averaged in the 700 range.

Using the housing model, student enrollment is projected to increase by 4,733 students in grades Pre-K-12 from the 2014-15 to the 2024-25 school year. The following table and graphs illustrate projected enrollments by grade and grade group through the 2024-25 school year.

**Olentangy Local School District  
Projected Enrollment - Housing Model**

	2014-15 Actual*	2014-15 End of Year	2015-16	2016-17	2017-18	2018-19	2019-20	2020-21	2021-22	2022-23	2023-24	2024-25
<b>Pre-K</b>	<b>318</b>	<b>319</b>	<b>301</b>	<b>315</b>	<b>301</b>	<b>316</b>	<b>316</b>	<b>316</b>	<b>316</b>	<b>316</b>	<b>316</b>	<b>316</b>
K	1,219	1,222	1,237	1,294	1,238	1,299	1,299	1,299	1,299	1,299	1,299	1,299
1	1,492	1,496	1,403	1,418	1,484	1,419	1,490	1,490	1,490	1,490	1,490	1,490
2	1,430	1,434	1,517	1,474	1,491	1,559	1,491	1,566	1,566	1,566	1,566	1,566
3	1,591	1,595	1,490	1,576	1,532	1,549	1,620	1,549	1,627	1,627	1,627	1,627
4	1,598	1,602	1,627	1,580	1,672	1,625	1,643	1,718	1,643	1,726	1,726	1,726
5	1,652	1,656	1,645	1,694	1,645	1,740	1,691	1,710	1,789	1,711	1,797	1,797
<b>K-5 Total</b>	<b>8,982</b>	<b>9,005</b>	<b>8,919</b>	<b>9,036</b>	<b>9,062</b>	<b>9,191</b>	<b>9,234</b>	<b>9,332</b>	<b>9,414</b>	<b>9,419</b>	<b>9,505</b>	<b>9,505</b>
6	1,571	1,575	1,708	1,706	1,756	1,706	1,805	1,754	1,774	1,855	1,774	1,863
7	1,539	1,543	1,612	1,782	1,780	1,833	1,780	1,883	1,831	1,851	1,936	1,852
8	1,479	1,483	1,554	1,683	1,860	1,858	1,913	1,858	1,966	1,910	1,932	2,020
<b>6-8 Total</b>	<b>4,589</b>	<b>4,601</b>	<b>4,874</b>	<b>5,171</b>	<b>5,396</b>	<b>5,397</b>	<b>5,498</b>	<b>5,495</b>	<b>5,571</b>	<b>5,616</b>	<b>5,642</b>	<b>5,735</b>
9	1,460	1,464	1,517	1,624	1,758	1,944	1,941	1,999	1,942	2,054	1,996	2,018
10	1,317	1,320	1,462	1,563	1,673	1,812	2,003	2,000	2,059	2,001	2,116	2,057
11	1,273	1,276	1,317	1,478	1,580	1,691	1,831	2,024	2,022	2,082	2,022	2,139
12	1,117	1,120	1,282	1,315	1,476	1,577	1,689	1,828	2,021	2,019	2,078	2,019
<b>9-12 Total</b>	<b>5,167</b>	<b>5,180</b>	<b>5,578</b>	<b>5,980</b>	<b>6,487</b>	<b>7,024</b>	<b>7,464</b>	<b>7,851</b>	<b>8,044</b>	<b>8,156</b>	<b>8,212</b>	<b>8,233</b>
<b>Total</b>	<b>19,056</b>	<b>19,105</b>	<b>19,672</b>	<b>20,502</b>	<b>21,246</b>	<b>21,928</b>	<b>22,512</b>	<b>22,994</b>	<b>23,345</b>	<b>23,507</b>	<b>23,675</b>	<b>23,789</b>

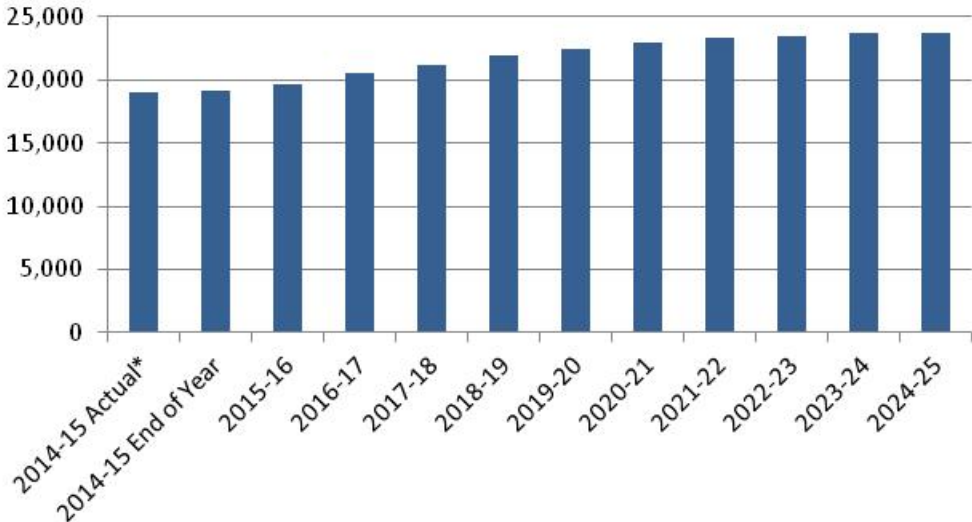
Source: FutureThink

\* as of August 22, 2014

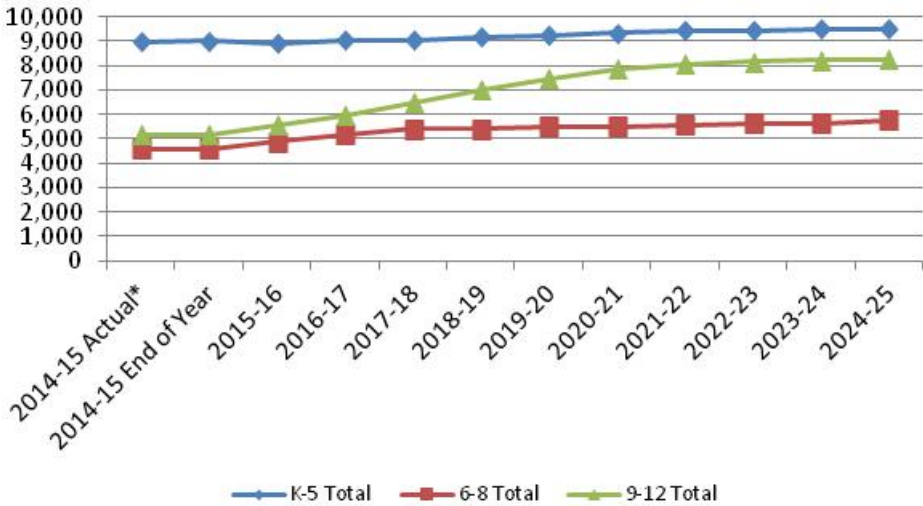


Olentangy Local Schools

Olentangy Local School District  
Projected Enrollment



Olentangy Local School District  
Projected Enrollment by Grade Group



## Olentangy Local Schools

### COMPARISON TO 2013 ENROLLMENT PROJECTION

Last year's projection is illustrated in the following table. For the 2023-24 school year, the difference between this projection (20,805) and the current projection using last year's model (21,123) is 318 students.

The difference at the Pre-K level is -8 students, and at the elementary school level, it is 64 students. The difference at the middle school level is 155 students, and at the high school level, it is 107 students.

Comparing with the housing model, the difference is 2,984. The difference at the Pre-K level is -4 students, and at the elementary school level, it is 673 students. The difference at the middle school level is 925 students, and at the high school level, it is 1,390 students.

Olentangy Local School District  
Projected Enrollment (2013 Report)

	2013-14 Actual	2013-14 End of Year	2014-15	2015-16	2016-17	2017-18	2018-19	2019-20	2020-21	2021-22	2022-23	2023-24
Pre-K	288	290	306	308	309	311	313	314	316	317	319	320
K	1,282	1,291	1,241	1,247	1,253	1,260	1,266	1,272	1,279	1,285	1,292	1,298
1	1,404	1,414	1,454	1,397	1,404	1,411	1,418	1,425	1,433	1,440	1,447	1,454
2	1,516	1,527	1,441	1,482	1,424	1,431	1,438	1,445	1,453	1,460	1,467	1,474
3	1,562	1,573	1,579	1,490	1,532	1,472	1,480	1,487	1,494	1,502	1,509	1,517
4	1,584	1,596	1,599	1,605	1,514	1,557	1,496	1,503	1,511	1,518	1,526	1,534
5	1,525	1,536	1,627	1,629	1,635	1,543	1,586	1,524	1,532	1,539	1,547	1,555
<b>K-5 Total</b>	<b>8,873</b>	<b>8,937</b>	<b>8,941</b>	<b>8,850</b>	<b>8,762</b>	<b>8,674</b>	<b>8,684</b>	<b>8,656</b>	<b>8,702</b>	<b>8,744</b>	<b>8,788</b>	<b>8,832</b>
6	1,496	1,507	1,578	1,671	1,673	1,679	1,585	1,629	1,565	1,573	1,581	1,589
7	1,466	1,476	1,529	1,600	1,694	1,696	1,703	1,607	1,652	1,587	1,595	1,603
8	1,435	1,445	1,494	1,550	1,622	1,718	1,720	1,727	1,629	1,675	1,609	1,618
<b>6-8 Total</b>	<b>4,397</b>	<b>4,428</b>	<b>4,601</b>	<b>4,821</b>	<b>4,989</b>	<b>5,093</b>	<b>5,008</b>	<b>4,963</b>	<b>4,846</b>	<b>4,835</b>	<b>4,785</b>	<b>4,810</b>
9	1,318	1,328	1,489	1,539	1,596	1,671	1,769	1,772	1,778	1,678	1,725	1,658
10	1,269	1,278	1,332	1,493	1,544	1,601	1,676	1,775	1,777	1,784	1,683	1,730
11	1,116	1,124	1,272	1,326	1,486	1,536	1,593	1,668	1,766	1,768	1,775	1,675
12	1,047	1,055	1,128	1,276	1,330	1,490	1,541	1,598	1,673	1,771	1,773	1,780
<b>9-12 Total</b>	<b>4,750</b>	<b>4,785</b>	<b>5,221</b>	<b>5,634</b>	<b>5,956</b>	<b>6,298</b>	<b>6,579</b>	<b>6,813</b>	<b>6,994</b>	<b>7,001</b>	<b>6,956</b>	<b>6,843</b>
<b>Total</b>	<b>18,308</b>	<b>18,440</b>	<b>19,069</b>	<b>19,613</b>	<b>20,016</b>	<b>20,376</b>	<b>20,584</b>	<b>20,746</b>	<b>20,858</b>	<b>20,897</b>	<b>20,848</b>	<b>20,805</b>

Source: FutureThink

\* as of September 4, 2013

## Olentangy Local Schools

Historical and projected enrollments by school follow. The projected enrollment is based on last year's model.

### Elementary Schools

#### Alum Creek Elementary School

##### Historical Enrollment

Grade	2005-06	2006-07	2007-08	2008-09	2009-10	2010-11	2011-12	2012-13	2013-14	2014-15
K	124	109	92	119	95	94	82	89	81	84
1	110	111	113	104	116	101	91	104	95	83
2	105	102	110	116	103	115	104	99	107	97
3	114	101	97	110	120	95	112	105	94	101
4	96	94	94	96	114	115	91	119	107	100
5	101	88	90	96	92	112	115	92	124	110
<b>Total</b>	<b>650</b>	<b>605</b>	<b>596</b>	<b>641</b>	<b>640</b>	<b>632</b>	<b>595</b>	<b>608</b>	<b>608</b>	<b>575</b>

#### Alum Creek Elementary School

##### Projected Enrollment

Grade	2014-15	2015-16	2016-17	2017-18	2018-19	2019-20	2020-21	2021-22	2022-23	2023-24	2024-25
K	84	85	84	86	86	86	87	87	86	88	88
1	83	87	87	87	88	89	88	89	90	90	91
2	97	85	90	89	91	92	91	92	93	93	94
3	101	95	84	88	87	88	89	88	89	90	90
4	100	106	99	88	91	90	92	93	93	93	94
5	110	105	110	102	90	94	94	95	96	96	97
<b>Total</b>	<b>575</b>	<b>563</b>	<b>554</b>	<b>540</b>	<b>533</b>	<b>539</b>	<b>541</b>	<b>544</b>	<b>547</b>	<b>550</b>	<b>554</b>

#### Arrowhead Elementary School

##### Historical Enrollment

Grade	2005-06	2006-07	2007-08	2008-09	2009-10	2010-11	2011-12	2012-13	2013-14	2014-15
K	108	117	63	90	109	90	45	61	70	62
1	101	118	103	84	89	103	83	58	64	78
2	114	100	90	110	80	77	102	69	61	66
3	107	109	94	107	105	79	82	101	70	72
4	105	113	95	100	102	86	77	74	104	79
5	114	114	78	107	104	85	82	70	75	103
<b>Total</b>	<b>649</b>	<b>671</b>	<b>523</b>	<b>598</b>	<b>589</b>	<b>520</b>	<b>471</b>	<b>433</b>	<b>444</b>	<b>460</b>

#### Arrowhead Elementary School

##### Projected Enrollment

Grade	2014-15	2015-16	2016-17	2017-18	2018-19	2019-20	2020-21	2021-22	2022-23	2023-24	2024-25
K	62	60	61	63	62	63	64	64	64	65	65
1	78	66	64	65	67	67	66	67	68	69	69
2	66	80	68	66	68	70	69	69	70	70	71
3	72	71	85	72	70	72	74	74	74	74	75
4	79	74	72	89	75	72	75	77	75	76	76
5	103	78	73	71	86	73	70	73	75	73	74
<b>Total</b>	<b>460</b>	<b>429</b>	<b>423</b>	<b>426</b>	<b>428</b>	<b>417</b>	<b>418</b>	<b>424</b>	<b>426</b>	<b>427</b>	<b>430</b>

## Olentangy Local Schools

### Cheshire Elementary Historical Enrollment

Grade	2005-06	2006-07	2007-08	2008-09	2009-10	2010-11	2011-12	2012-13	2013-14	2014-15
K						95	69	91	100	95
1						79	102	97	105	126
2						82	82	99	100	111
3						74	89	92	113	108
4						69	74	91	88	118
5						68	75	77	96	101
<b>Total</b>						<b>467</b>	<b>491</b>	<b>547</b>	<b>602</b>	<b>659</b>

### Cheshire Elementary Projected Enrollment

Grade	2014-15	2015-16	2016-17	2017-18	2018-19	2019-20	2020-21	2021-22	2022-23	2023-24	2024-25
K	95	91	90	91	92	92	92	93	93	94	94
1	126	114	108	108	108	110	109	110	111	111	112
2	111	128	115	110	110	110	111	112	113	113	113
3	108	121	138	125	119	119	119	120	121	122	122
4	118	109	121	140	126	120	120	119	120	121	122
5	101	129	117	131	151	135	131	130	129	131	132
<b>Total</b>	<b>659</b>	<b>692</b>	<b>689</b>	<b>705</b>	<b>706</b>	<b>686</b>	<b>682</b>	<b>684</b>	<b>687</b>	<b>692</b>	<b>695</b>

### Freedom Trail Elementary Historical Enrollment

Grade	2005-06	2006-07	2007-08	2008-09	2009-10	2010-11	2011-12	2012-13	2013-14	2014-15
K					103	105	78	82	85	78
1					125	112	115	111	93	99
2					110	127	113	112	113	95
3					93	108	120	119	115	121
4					97	96	106	120	117	117
5					85	94	100	109	115	118
<b>Total</b>					<b>613</b>	<b>642</b>	<b>632</b>	<b>653</b>	<b>638</b>	<b>628</b>

### Freedom Trail Elementary Projected Enrollment

Grade	2014-15	2015-16	2016-17	2017-18	2018-19	2019-20	2020-21	2021-22	2022-23	2023-24	2024-25
K	78	76	76	78	77	78	78	79	79	80	80
1	99	96	93	94	94	95	95	96	97	97	98
2	95	100	97	94	96	96	96	97	98	98	99
3	121	101	105	102	99	100	100	101	101	102	102
4	117	122	101	107	103	100	100	101	102	102	102
5	118	116	120	99	104	101	98	99	100	100	100
<b>Total</b>	<b>628</b>	<b>611</b>	<b>592</b>	<b>574</b>	<b>573</b>	<b>570</b>	<b>567</b>	<b>573</b>	<b>577</b>	<b>579</b>	<b>581</b>

## Olentangy Local Schools

### Glen Oak Elementary School Historical Enrollment

Grade	2005-06	2006-07	2007-08	2008-09	2009-10	2010-11	2011-12	2012-13	2013-14	2014-15
K	126	108	109	115	113	134	82	97	97	102
1	128	119	113	126	97	116	133	106	101	105
2	84	94	102	119	99	103	118	97	97	103
3	87	78	93	94	82	105	111	91	100	98
4	77	82	86	95	88	81	108	79	98	99
5	56	75	68	88	68	93	80	74	83	96
<b>Total</b>	<b>558</b>	<b>556</b>	<b>571</b>	<b>637</b>	<b>547</b>	<b>632</b>	<b>632</b>	<b>544</b>	<b>576</b>	<b>603</b>

### Glen Oak Elementary School Projected Enrollment

Grade	2014-15	2015-16	2016-17	2017-18	2018-19	2019-20	2020-21	2021-22	2022-23	2023-24	2024-25
K	102	97	97	97	98	99	99	100	100	101	101
1	105	105	99	100	100	101	102	102	103	103	104
2	103	102	102	96	96	96	97	98	98	98	98
3	98	106	104	103	98	98	98	99	99	99	100
4	99	99	106	103	104	98	98	99	100	100	100
5	96	99	97	104	102	101	96	97	97	98	98
<b>Total</b>	<b>603</b>	<b>608</b>	<b>605</b>	<b>603</b>	<b>598</b>	<b>593</b>	<b>590</b>	<b>595</b>	<b>597</b>	<b>599</b>	<b>601</b>

### Heritage Elementary School Historical Enrollment

Grade	2005-06	2006-07	2007-08	2008-09	2009-10	2010-11	2011-12	2012-13	2013-14	2014-15
K							324	79	84	90
1								95	102	97
2								103	102	108
3								95	113	113
4								91	100	109
5								83	93	104
<b>Total</b>							<b>324</b>	<b>546</b>	<b>594</b>	<b>621</b>

### Heritage Elementary School Projected Enrollment

Grade	2014-15	2015-16	2016-17	2017-18	2018-19	2019-20	2020-21	2021-22	2022-23	2023-24	2024-25
K	90	81	81	82	82	83	83	84	84	85	85
1	97	109	98	98	99	99	100	100	101	101	102
2	108	103	115	104	105	105	105	106	106	107	107
3	113	119	114	127	116	115	115	116	118	118	118
4	109	115	121	115	129	117	117	116	117	118	119
5	104	113	118	125	119	133	121	121	120	121	122
<b>Total</b>	<b>621</b>	<b>640</b>	<b>647</b>	<b>651</b>	<b>650</b>	<b>652</b>	<b>641</b>	<b>643</b>	<b>646</b>	<b>650</b>	<b>653</b>

## Olentangy Local Schools

### Indian Springs Elementary Historical Enrollment

Grade	2005-06	2006-07	2007-08	2008-09	2009-10	2010-11	2011-12	2012-13	2013-14	2014-15
K	138	115	95	132	86	109	79	90	92	74
1	153	132	138	108	134	110	113	105	102	104
2	118	138	117	139	101	133	118	113	109	107
3	94	114	99	114	142	87	128	117	115	116
4	100	82	93	97	115	111	97	126	117	123
5	102	87	65	97	92	95	108	98	130	119
<b>Total</b>	<b>705</b>	<b>668</b>	<b>607</b>	<b>687</b>	<b>670</b>	<b>645</b>	<b>643</b>	<b>649</b>	<b>665</b>	<b>643</b>

### Indian Springs Elementary Projected Enrollment

Grade	2014-15	2015-16	2016-17	2017-18	2018-19	2019-20	2020-21	2021-22	2022-23	2023-24	2024-25
K	74	83	84	81	85	86	86	87	87	87	88
1	104	83	93	95	95	95	96	97	97	98	98
2	107	109	86	98	98	99	98	99	100	100	101
3	116	112	113	89	102	102	103	104	104	104	105
4	123	121	115	117	92	106	106	106	107	108	108
5	119	127	124	119	121	95	108	108	109	110	110
<b>Total</b>	<b>643</b>	<b>635</b>	<b>615</b>	<b>599</b>	<b>593</b>	<b>583</b>	<b>597</b>	<b>601</b>	<b>604</b>	<b>607</b>	<b>610</b>

### Johnnycake Corners Elementary School Historical Enrollment

Grade	2005-06	2006-07	2007-08	2008-09	2009-10	2010-11	2011-12	2012-13	2013-14	2014-15
K			61	74	67	85	73	85	67	82
1			79	71	85	78	86	110	102	84
2			65	83	80	90	79	92	113	98
3			59	73	84	88	101	82	94	114
4			63	68	75	88	95	108	89	95
5			68	69	65	72	92	100	113	94
<b>Total</b>			<b>395</b>	<b>438</b>	<b>456</b>	<b>501</b>	<b>526</b>	<b>577</b>	<b>578</b>	<b>567</b>

### Johnnycake Corners Elementary School Projected Enrollment

Grade	2014-15	2015-16	2016-17	2017-18	2018-19	2019-20	2020-21	2021-22	2022-23	2023-24	2024-25
K	82	78	78	80	79	80	80	81	81	81	82
1	84	100	95	95	96	96	97	97	98	98	99
2	98	84	100	95	95	96	96	96	96	97	97
3	114	100	86	101	96	96	97	97	98	99	100
4	95	119	105	90	105	100	101	102	103	104	104
5	94	101	126	111	95	111	106	107	108	108	109
<b>Total</b>	<b>567</b>	<b>582</b>	<b>590</b>	<b>572</b>	<b>566</b>	<b>579</b>	<b>577</b>	<b>580</b>	<b>584</b>	<b>587</b>	<b>591</b>

## Olentangy Local Schools

### Liberty Tree Elementary School Historical Enrollment

Grade	2005-06	2006-07	2007-08	2008-09	2009-10	2010-11	2011-12	2012-13	2013-14	2014-15
K			104	121	164	104	95	83	96	77
1			85	139	122	137	108	106	95	103
2			74	96	135	114	135	101	112	88
3			77	86	92	121	115	118	101	121
4			63	89	94	116	120	94	118	102
5			58	76	87	105	117	109	93	129
<b>Total</b>			<b>461</b>	<b>607</b>	<b>694</b>	<b>697</b>	<b>690</b>	<b>611</b>	<b>615</b>	<b>620</b>

### Liberty Tree Elementary School Projected Enrollment

Grade	2014-15	2015-16	2016-17	2017-18	2018-19	2019-20	2020-21	2021-22	2022-23	2023-24	2024-25
K	<b>77</b>	82	83	83	83	84	84	84	85	85	85
1	<b>103</b>	84	90	91	91	92	92	93	93	93	94
2	<b>88</b>	102	83	88	89	90	91	90	90	91	91
3	<b>121</b>	93	106	86	92	93	94	93	95	95	96
4	<b>102</b>	123	93	107	86	93	93	94	94	95	95
5	<b>129</b>	107	128	97	111	90	97	97	99	99	98
<b>Total</b>	<b>620</b>	<b>591</b>	<b>583</b>	<b>552</b>	<b>552</b>	<b>542</b>	<b>551</b>	<b>551</b>	<b>556</b>	<b>558</b>	<b>559</b>

### Oak Creek Elementary School Historical Enrollment

Grade	2005-06	2006-07	2007-08	2008-09	2009-10	2010-11	2011-12	2012-13	2013-14	2014-15
K	122	98	130	124	103	121	75	99	106	67
1	104	126	109	137	105	102	117	110	98	120
2	126	114	121	104	118	100	103	117	95	100
3	99	98	110	120	93	121	91	99	110	94
4	101	86	93	103	93	96	118	93	104	103
5	104	83	87	98	89	96	95	116	91	109
<b>Total</b>	<b>656</b>	<b>605</b>	<b>650</b>	<b>686</b>	<b>601</b>	<b>636</b>	<b>599</b>	<b>634</b>	<b>604</b>	<b>593</b>

### Oak Creek Elementary School Projected Enrollment

Grade	2014-15	2015-16	2016-17	2017-18	2018-19	2019-20	2020-21	2021-22	2022-23	2023-24	2024-25
K	<b>67</b>	84	85	85	85	86	86	86	87	87	87
1	<b>120</b>	75	95	95	95	96	96	96	96	96	97
2	<b>100</b>	121	76	95	95	96	97	96	96	97	97
3	<b>94</b>	95	115	72	90	90	91	92	92	93	93
4	<b>103</b>	95	96	116	72	90	91	92	92	92	93
5	<b>109</b>	104	95	96	116	72	90	91	92	92	93
<b>Total</b>	<b>593</b>	<b>574</b>	<b>562</b>	<b>559</b>	<b>553</b>	<b>530</b>	<b>551</b>	<b>553</b>	<b>555</b>	<b>557</b>	<b>560</b>

## Olentangy Local Schools

### Olentangy Meadows Elementary School Historical Enrollment

Grade	2005-06	2006-07	2007-08	2008-09	2009-10	2010-11	2011-12	2012-13	2013-14	2014-15
K		100	118	122	120	156	85	84	122	122
1		103	121	129	124	134	138	120	95	146
2		77	105	116	114	116	141	99	125	97
3		104	81	107	101	118	119	101	101	135
4		98	107	93	91	106	119	81	99	106
5		85	97	119	77	91	109	92	84	108
<b>Total</b>		<b>567</b>	<b>629</b>	<b>686</b>	<b>627</b>	<b>721</b>	<b>711</b>	<b>577</b>	<b>626</b>	<b>714</b>

### Olentangy Meadows Elementary School Projected Enrollment

Grade	2014-15	2015-16	2016-17	2017-18	2018-19	2019-20	2020-21	2021-22	2022-23	2023-24	2024-25
K	122	102	102	102	103	102	103	103	104	104	104
1	146	141	118	117	117	118	119	119	119	120	120
2	97	151	144	122	120	120	121	122	123	123	124
3	135	102	158	152	128	127	126	128	128	129	129
4	106	137	104	160	154	129	129	128	130	130	131
5	108	113	146	111	171	164	139	137	136	138	138
<b>Total</b>	<b>714</b>	<b>746</b>	<b>772</b>	<b>764</b>	<b>793</b>	<b>760</b>	<b>737</b>	<b>737</b>	<b>740</b>	<b>744</b>	<b>746</b>

### Scioto Ridge Elementary School Historical Enrollment

Grade	2005-06	2006-07	2007-08	2008-09	2009-10	2010-11	2011-12	2012-13	2013-14	2014-15
K	98	105	114	94	44	99	73	83	68	51
1	100	127	125	116	124	108	112	87	88	80
2	126	100	126	131	127	107	103	107	84	83
3	96	129	104	129	133	108	105	108	115	90
4	101	93	123	115	135	116	110	106	114	111
5	96	101	97	117	114	111	116	110	99	117
<b>Total</b>	<b>617</b>	<b>655</b>	<b>689</b>	<b>702</b>	<b>677</b>	<b>649</b>	<b>619</b>	<b>601</b>	<b>568</b>	<b>532</b>

### Scioto Ridge Elementary School Projected Enrollment

Grade	2014-15	2015-16	2016-17	2017-18	2018-19	2019-20	2020-21	2021-22	2022-23	2023-24	2024-25
K	51	75	76	77	76	76	77	77	78	78	79
1	80	59	87	87	88	87	89	89	89	90	90
2	83	76	56	82	82	83	83	84	84	85	86
3	90	89	82	59	88	89	89	89	90	90	91
4	111	91	91	83	60	89	90	91	90	91	92
5	117	109	91	90	83	59	87	89	90	89	91
<b>Total</b>	<b>532</b>	<b>499</b>	<b>483</b>	<b>478</b>	<b>477</b>	<b>483</b>	<b>515</b>	<b>519</b>	<b>521</b>	<b>523</b>	<b>529</b>



## Olentangy Local Schools

### Tyler Run Elementary School Historical Enrollment

Grade	2005-06	2006-07	2007-08	2008-09	2009-10	2010-11	2011-12	2012-13	2013-14	2014-15
K	98	119	91	94	112	99	62	65	89	70
1	118	111	136	109	111	114	102	89	82	99
2	109	115	109	130	106	102	113	104	93	83
3	132	105	113	115	131	97	106	113	110	93
4	110	123	104	112	117	119	96	104	110	115
5	103	98	125	106	116	114	122	102	107	113
<b>Total</b>	<b>670</b>	<b>671</b>	<b>678</b>	<b>666</b>	<b>693</b>	<b>645</b>	<b>601</b>	<b>577</b>	<b>591</b>	<b>573</b>

### Tyler Run Elementary School Projected Enrollment

Grade	2014-15	2015-16	2016-17	2017-18	2018-19	2019-20	2020-21	2021-22	2022-23	2023-24	2024-25
K	70	81	82	81	82	82	83	83	84	84	85
1	99	80	93	95	95	94	96	96	96	98	97
2	83	102	82	96	96	96	97	98	98	99	99
3	93	85	105	85	99	99	99	100	100	100	101
4	115	94	87	106	86	100	100	101	101	101	102
5	113	118	97	90	109	88	102	103	104	104	105
<b>Total</b>	<b>573</b>	<b>560</b>	<b>546</b>	<b>553</b>	<b>567</b>	<b>559</b>	<b>577</b>	<b>581</b>	<b>583</b>	<b>586</b>	<b>589</b>

### Walnut Creek Elementary Historical Enrollment

Grade	2005-06	2006-07	2007-08	2008-09	2009-10	2010-11	2011-12	2012-13	2013-14	2014-15
K	122	129	116	106	80	78	55	89	60	92
1	130	114	133	118	111	94	79	113	108	89
2	126	121	119	140	91	114	94	107	112	115
3	93	120	106	106	95	91	114	116	114	115
4	97	89	120	94	120	97	103	130	112	113
5	95	91	85	101	85	120	96	117	129	117
<b>Total</b>	<b>663</b>	<b>664</b>	<b>679</b>	<b>665</b>	<b>582</b>	<b>594</b>	<b>541</b>	<b>672</b>	<b>635</b>	<b>641</b>

### Walnut Creek Elementary Projected Enrollment

Grade	2014-15	2015-16	2016-17	2017-18	2018-19	2019-20	2020-21	2021-22	2022-23	2023-24	2024-25
K	92	85	86	85	86	86	87	87	88	88	89
1	89	118	109	108	109	110	110	110	111	112	112
2	115	91	120	111	110	111	112	113	113	114	115
3	115	120	96	126	116	117	117	117	118	119	119
4	113	114	120	94	125	116	115	115	117	117	117
5	117	115	117	122	96	127	118	117	117	119	119
<b>Total</b>	<b>641</b>	<b>643</b>	<b>648</b>	<b>646</b>	<b>642</b>	<b>667</b>	<b>659</b>	<b>659</b>	<b>664</b>	<b>669</b>	<b>671</b>

## Olentangy Local Schools

### Wyandot Run Elementary School

#### Historical Enrollment

Grade	2005-06	2006-07	2007-08	2008-09	2009-10	2010-11	2011-12	2012-13	2013-14	2014-15
K	96	130	124	72	133	101	64	64	65	73
1	137	122	158	83	86	87	98	92	74	79
2	111	148	128	119	86	86	94	101	93	79
3	88	117	125	98	87	89	94	102	97	100
4	132	111	121	102	123	94	96	94	107	108
5	107	150	108	94	99	127	101	101	93	114
<b>Total</b>	<b>671</b>	<b>778</b>	<b>764</b>	<b>568</b>	<b>614</b>	<b>584</b>	<b>547</b>	<b>554</b>	<b>529</b>	<b>553</b>

### Wyandot Run Elementary School

#### Projected Enrollment

Grade	2014-15	2015-16	2016-17	2017-18	2018-19	2019-20	2020-21	2021-22	2022-23	2023-24	2024-25
K	73	69	70	70	71	70	71	71	72	72	73
1	79	86	81	82	82	82	83	84	84	84	84
2	79	83	88	83	85	83	87	86	87	87	88
3	100	81	84	90	84	86	88	88	87	88	88
4	108	108	88	91	98	93	94	94	95	96	96
5	114	111	111	91	94	102	96	97	97	98	98
<b>Total</b>	<b>553</b>	<b>538</b>	<b>522</b>	<b>507</b>	<b>514</b>	<b>516</b>	<b>519</b>	<b>520</b>	<b>522</b>	<b>525</b>	<b>527</b>

## Middle Schools

### Berkshire Middle School

#### Historical Enrollment

Grade	2005-06	2006-07	2007-08	2008-09	2009-10	2010-11	2011-12	2012-13	2013-14	2014-15
6							295	273	320	332
7							254	303	287	333
8							228	261	300	286
<b>Total</b>							<b>777</b>	<b>837</b>	<b>907</b>	<b>951</b>

### Berkshire Middle School

#### Projected Enrollment

Grade	2014-15	2015-16	2016-17	2017-18	2018-19	2019-20	2020-21	2021-22	2022-23	2023-24	2024-25
6	332	323	336	375	343	342	385	351	350	351	354
7	333	346	337	349	390	356	355	401	365	365	364
8	286	330	349	340	353	393	359	358	404	366	366
<b>Total</b>	<b>951</b>	<b>999</b>	<b>1,022</b>	<b>1,064</b>	<b>1,086</b>	<b>1,091</b>	<b>1,099</b>	<b>1,110</b>	<b>1,119</b>	<b>1,082</b>	<b>1,084</b>

### Hyatts Middle School

#### Historical Enrollment

Grade	2005-06	2006-07	2007-08	2008-09	2009-10	2010-11	2011-12	2012-13	2013-14	2014-15
6			202	197	257	257	281	286	282	286
7			201	208	202	253	225	252	283	290
8			175	195	212	199	231	220	252	293
<b>Total</b>			<b>578</b>	<b>600</b>	<b>671</b>	<b>709</b>	<b>737</b>	<b>758</b>	<b>817</b>	<b>869</b>

### Hyatts Middle School

#### Projected Enrollment

Grade	2014-15	2015-16	2016-17	2017-18	2018-19	2019-20	2020-21	2021-22	2022-23	2023-24	2024-25
6	286	324	304	310	273	285	230	257	263	267	266
7	290	288	325	305	312	274	286	230	259	265	269
8	293	294	297	336	314	321	282	296	238	267	272
<b>Total</b>	<b>869</b>	<b>906</b>	<b>926</b>	<b>951</b>	<b>899</b>	<b>880</b>	<b>798</b>	<b>783</b>	<b>760</b>	<b>799</b>	<b>807</b>

## Olentangy Local Schools

### Olentangy Liberty Middle School Historical Enrollment

Grade	2005-06	2006-07	2007-08	2008-09	2009-10	2010-11	2011-12	2012-13	2013-14	2014-15
6	306	331	205	262	251	269	275	283	252	251
7	314	316	240	220	265	257	272	279	281	252
8	351	317	222	248	227	274	252	274	278	279
<b>Total</b>	<b>971</b>	<b>964</b>	<b>667</b>	<b>730</b>	<b>743</b>	<b>800</b>	<b>799</b>	<b>836</b>	<b>811</b>	<b>782</b>

### Olentangy Liberty Middle School Projected Enrollment

Grade	2014-15	2015-16	2016-17	2017-18	2018-19	2019-20	2020-21	2021-22	2022-23	2023-24	2024-25
6	251	283	284	254	224	245	231	242	248	252	251
7	252	252	283	285	254	224	245	230	242	247	253
8	279	253	256	288	289	258	228	249	234	247	252
<b>Total</b>	<b>782</b>	<b>788</b>	<b>823</b>	<b>827</b>	<b>767</b>	<b>727</b>	<b>704</b>	<b>721</b>	<b>724</b>	<b>746</b>	<b>756</b>

### Olentangy Orange Middle School Historical Enrollment

Grade	2005-06	2006-07	2007-08	2008-09	2009-10	2010-11	2011-12	2012-13	2013-14	2014-15
6	286	302	292	330	386	385	256	281	299	308
7	262	287	292	306	341	388	233	265	282	307
8	225	270	282	297	309	339	253	246	270	282
<b>Total</b>	<b>773</b>	<b>859</b>	<b>866</b>	<b>933</b>	<b>1,036</b>	<b>1,112</b>	<b>742</b>	<b>792</b>	<b>851</b>	<b>897</b>

### Olentangy Orange Middle School Projected Enrollment

Grade	2014-15	2015-16	2016-17	2017-18	2018-19	2019-20	2020-21	2021-22	2022-23	2023-24	2024-25
6	308	343	344	357	333	381	324	338	340	340	342
7	307	314	349	350	363	339	388	328	344	345	346
8	282	315	326	362	363	377	352	402	342	358	359
<b>Total</b>	<b>897</b>	<b>972</b>	<b>1,019</b>	<b>1,069</b>	<b>1,059</b>	<b>1,097</b>	<b>1,064</b>	<b>1,068</b>	<b>1,026</b>	<b>1,043</b>	<b>1,047</b>

### Olentangy Shanahan Middle School Historical Enrollment

Grade	2005-06	2006-07	2007-08	2008-09	2009-10	2010-11	2011-12	2012-13	2013-14	2014-15
6	273	312	250	273	307	312	308	317	343	394
7	243	281	254	254	278	310	274	329	333	357
8	196	251	231	254	255	277	267	282	335	339
<b>Total</b>	<b>712</b>	<b>844</b>	<b>735</b>	<b>781</b>	<b>840</b>	<b>899</b>	<b>849</b>	<b>928</b>	<b>1,011</b>	<b>1,090</b>

### Olentangy Shanahan Middle School Projected Enrollment

Grade	2014-15	2015-16	2016-17	2017-18	2018-19	2019-20	2020-21	2021-22	2022-23	2023-24	2024-25
6	394	435	428	425	434	446	423	413	408	407	412
7	357	412	454	446	443	452	465	441	429	425	423
8	339	362	422	463	457	454	462	475	451	439	436
<b>Total</b>	<b>1,090</b>	<b>1,209</b>	<b>1,304</b>	<b>1,334</b>	<b>1,334</b>	<b>1,352</b>	<b>1,350</b>	<b>1,329</b>	<b>1,288</b>	<b>1,271</b>	<b>1,271</b>

## Olentangy Local Schools

### High Schools

#### Olentangy Liberty High School Historical Enrollment

Grade	2005-06	2006-07	2007-08	2008-09	2009-10	2010-11	2011-12	2012-13	2013-14	2014-15
9	321	383	367	355	387	393	422	479	487	534
10	305	325	383	347	356	382	404	420	481	484
11	316	301	323	370	339	352	401	392	410	470
12	264	322	305	336	375	323	364	406	400	415
<b>Total</b>	<b>1,206</b>	<b>1,331</b>	<b>1,378</b>	<b>1,408</b>	<b>1,457</b>	<b>1,450</b>	<b>1,591</b>	<b>1,697</b>	<b>1,778</b>	<b>1,903</b>

#### Olentangy Liberty High School Projected Enrollment

Grade	2014-15	2015-16	2016-17	2017-18	2018-19	2019-20	2020-21	2021-22	2022-23	2023-24	2024-25
9	534	571	545	550	624	602	576	508	544	467	500
10	484	536	571	544	548	623	602	576	506	543	467
11	470	473	523	559	531	535	608	586	561	493	528
12	415	479	481	531	567	539	544	618	597	570	502
<b>Total</b>	<b>1,903</b>	<b>2,059</b>	<b>2,120</b>	<b>2,184</b>	<b>2,270</b>	<b>2,299</b>	<b>2,330</b>	<b>2,288</b>	<b>2,208</b>	<b>2,073</b>	<b>1,997</b>

#### Olentangy High School Historical Enrollment

Grade	2005-06	2006-07	2007-08	2008-09	2009-10	2010-11	2011-12	2012-13	2013-14	2014-15
9	387	431	484	277	317	311	336	390	418	453
10	328	396	441	255	281	326	312	339	393	420
11	316	331	391	221	255	287	334	317	345	400
12	271	310	337	388	229	245	285	334	314	340
<b>Total</b>	<b>1,302</b>	<b>1,468</b>	<b>1,653</b>	<b>1,141</b>	<b>1,082</b>	<b>1,169</b>	<b>1,267</b>	<b>1,380</b>	<b>1,470</b>	<b>1,613</b>

#### Olentangy High School Projected Enrollment

Grade	2014-15	2015-16	2016-17	2017-18	2018-19	2019-20	2020-21	2021-22	2022-23	2023-24	2024-25
9	453	474	516	589	628	628	643	630	643	634	609
10	420	457	475	519	593	632	632	646	634	647	637
11	400	429	465	484	528	602	641	641	656	644	656
12	340	397	424	460	479	522	596	635	635	651	638
<b>Total</b>	<b>1,613</b>	<b>1,757</b>	<b>1,880</b>	<b>2,052</b>	<b>2,228</b>	<b>2,384</b>	<b>2,512</b>	<b>2,552</b>	<b>2,568</b>	<b>2,576</b>	<b>2,540</b>

#### Orange High School Historical Enrollment

Grade	2005-06	2006-07	2007-08	2008-09	2009-10	2010-11	2011-12	2012-13	2013-14	2014-15
9				309	312	321	358	403	413	473
10				259	312	327	326	366	395	413
11				233	261	327	334	330	361	403
12					228	264	325	327	333	362
<b>Total</b>				<b>801</b>	<b>1,113</b>	<b>1,239</b>	<b>1,343</b>	<b>1,426</b>	<b>1,502</b>	<b>1,651</b>

#### Olentangy Orange High School Projected Enrollment

Grade	2014-15	2015-16	2016-17	2017-18	2018-19	2019-20	2020-21	2021-22	2022-23	2023-24	2024-25
9	473	472	528	548	577	586	624	583	633	605	605
10	413	469	468	523	543	571	579	618	578	627	599
11	403	415	471	468	524	543	572	581	619	577	628
12	362	406	418	474	471	528	547	576	584	623	581
<b>Total</b>	<b>1,651</b>	<b>1,762</b>	<b>1,885</b>	<b>2,013</b>	<b>2,115</b>	<b>2,228</b>	<b>2,322</b>	<b>2,358</b>	<b>2,414</b>	<b>2,432</b>	<b>2,413</b>

### CONCLUSION

---

As with any projections, the District should continue to pay close attention to birth counts, enrollment in the elementary schools, housing growth, and demographics. Each of these factors will have an impact on future student enrollment.

**FutureThink** is pleased to have had the opportunity to provide the District with enrollment projection services. We hope this document will provide the necessary information to make informed decisions about the future of the Olentangy Local Schools.