



FutureThink

Formerly DeJONG-HEALY

REPORT



Enrollment Projection Update
October 2013

ACKNOWLEDGEMENTS

FutureThink would like to extend our appreciation to the Olentangy Local Schools for choosing us to assist them in developing these enrollment projections. In addition, thank you to Michelle Murphy and Ralph Au.

Future growth in the Olentangy Local School District Community will have a significant impact on the school facilities and student population. The following information will continue to provide the District with a valuable planning tool to assist in determining the future direction of its school system.

As a consulting team, we appreciate this opportunity to serve your school community as you embark on your vision for the future of education in the Olentangy Local Schools.

Tracy Healy

President

INTRODUCTION

FutureThink has provided enrollment projections for the Olentangy Local Schools annually since 1998. For several years, enrollment was projected using a methodology based on new housing starts due to the explosive growth seen in the District primarily from 1997-2005. Single-family building permits peaked in 2004 at over 1,700 permits. In 2006, single-family permits dropped to 768. Currently, just over 350 permits have been issued so far this year.

2008 Projections

In 2008, **FutureThink** developed enrollment projections based on a methodology to better reflect the economic conditions of the time. Three basic assumptions were made:

- Kindergarten enrollment would continue to be negatively impacted by the reduced housing starts for the next few years. It would then start to level off.
- First grade growth would continue as it has. Traditionally, there is an increase in first grade enrollment from kindergarten the previous year. This is due, in great part, to parents choosing a private, all-day kindergarten program then enrolling their child in the district for first grade.
- Grades 2-12 would see a greater growth than previously anticipated through 2009-10 due to students leaving the private and parochial schools for financial reasons. After 2009-10, the growth rate would then slow.

2009 Projections

While the enrollment projections from 2008 were highly accurate [within 10 students total for the first year], there was concern raised regarding the kindergarten enrollment. Actual kindergarten enrollment for 2009-10 was 71 students higher than projected. Based on this, kindergarten enrollment was projected to grow at 4.6% in 2010-11, from a base of 1,344 students [kindergarten registration count]. Following 2010-11, growth was projected to be approximately 0.5% from the previous year until 2019-20.

Olentangy Local Schools

2010 Projections

While the enrollment projections from 2009 were within less than 1 percent of the actual enrollment, there was again concern raised regarding the kindergarten enrollment. Actual kindergarten enrollment for 2010-11 was 63 students lower than projected.

To better address kindergarten enrollment, births in the area were incorporated into the projections for years 2011-12 – 2013-14. In 2013-14, a growth factor of 7.2% was applied to account for growth due to the implementation of all-day kindergarten. Starting in the 2014-15 school year, a 0.5% growth factor was applied to the previous year's enrollment. For first grade, the average survival ratio of the past 2 years was used for kindergarten to 1st grade through 2013-14. Starting in the 2014-15 school year, the growth factor was reduced to 6% to account for the increase in kindergarten enrollment due to all-day kindergarten implementation.

2011 Projections

Overall, the methodology used in 2010 was successful. Kindergarten enrollment was within 7 students of the projection. The difference between the actual and projected enrollment for Pre-K-12 was 83 students or .49 percent.

For 2011, we used the same methodology with two minor modifications. Due to the change in legislation regarding all-day Kindergarten, we did not incorporate the additional growth factor for kindergarten in the 2013-14 school year. We incorporated births in the area for years 2012-13 – 2013-14. For the years 2014-15 – 2021-22, a 0.5% growth factor was applied to the previous year's enrollment. For first grade, the average survival ratio of the past 2 years was used.

Additionally, an "end of year" projection for the 2011-12 school year was included.

Olentangy Local Schools

2012 Projections

Overall, the methodologies used in 2010 and 2011 were successful. The difference between the actual and projected enrollment for Pre-K-12 was 117 students or .66 percent.

For 2012, we used the same methodology as 2011 with one modification. The preschool projection was based on kindergarten enrollment rather than simply adding 34 students each year as we did in 2011.

2013 Projections

The methodology used in 2012 was successful, so it remains the same for this year.

As with any enrollment projection, there are a number of factors that can influence future growth—either positively or negatively. Due to the uncertain economic conditions we are currently living in, it is impossible to know how quickly the housing market will recover and to what extent.

Olentangy Local Schools

ENROLLMENT COMPARISON

As mentioned previously, the difference between the actual and projected enrollment for the 2013-14 school year is less than 1 percent. The grades with the greatest difference were PreK and K at 35 and 27, respectively.

The following table illustrates the difference by grade.

Olentangy Local School District

	Actual, 2013-14*	Projected	Difference	Percentage
Pre-K	288	323	35	12.15%
K	1,282	1,309	27	2.11%
1	1,404	1,386	-18	-1.28%
2	1,516	1,535	19	1.25%
3	1,562	1,561	-1	-0.06%
4	1,584	1,596	12	0.76%
5	1,525	1,534	9	0.59%
K-5 Total	8,873	8,921	48	0.54%
6	1,496	1,495	-1	-0.07%
7	1,466	1,461	-5	-0.34%
8	1,435	1,451	16	1.11%
6-8 Total	4,397	4,407	10	0.23%
9	1,318	1,325	7	0.53%
10	1,269	1,283	14	1.10%
11	1,116	1,140	24	2.15%
12	1,047	1,043	-4	-0.38%
9-12 Total	4,750	4,791	41	0.86%
Total	18,308	18,442	134	0.73%

Source: Olentangy Local School District

* as of September 4, 2013

Olentangy Local Schools

HISTORICAL ENROLLMENT

Over the past ten years, the PreK-12 enrollment in the Olentangy Local Schools has increased by 8,733 students or 91 percent. Total enrollment for the 2013-14 school year is 18,308, an increase of 550 students, or 3%, from the previous school year.

The following table and graphs illustrate the District's enrollment history from 2004-05 through 2013-14.

**Olentangy Local School District
Historical Enrollment**

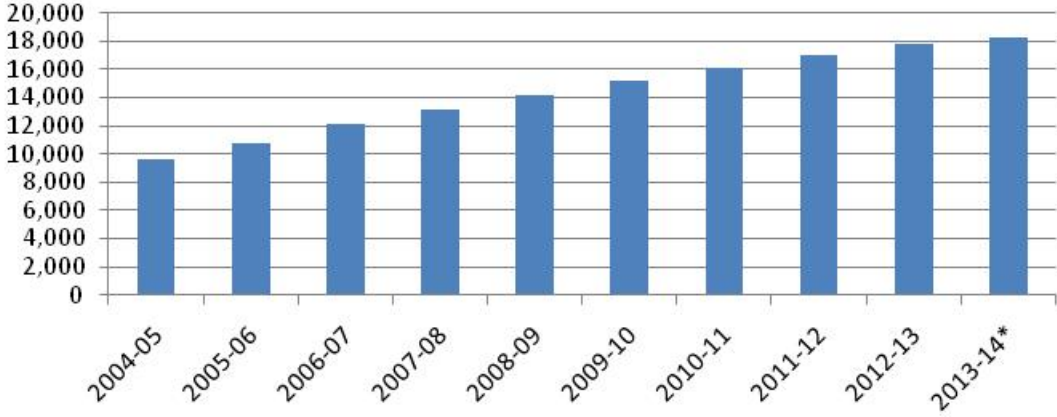
	2004-05	2005-06	2006-07	2007-08	2008-09	2009-10	2010-11	2011-12	2012-13	2013-14*
Pre-K	107	127	147	172	234	300	276	293	321	288
K	860	1,080	1,150	1,203	1,253	1,319	1,343	1,341	1,241	1,282
1	963	1,011	1,237	1,320	1,318	1,422	1,488	1,477	1,503	1,404
2	868	1,023	1,087	1,270	1,334	1,349	1,460	1,499	1,520	1,516
3	803	934	1,069	1,123	1,320	1,356	1,378	1,487	1,559	1,562
4	852	870	1,015	1,106	1,169	1,362	1,399	1,410	1,510	1,584
5	790	896	927	1,032	1,168	1,167	1,379	1,408	1,450	1,525
K-5 Total	5,136	5,814	6,485	7,054	7,562	7,975	8,447	8,622	8,783	8,873
6	775	849	942	948	1,061	1,204	1,217	1,415	1,440	1,496
7	717	803	887	982	985	1,086	1,203	1,258	1,428	1,466
8	660	756	838	906	993	1,002	1,091	1,231	1,283	1,435
6-8 Total	2,152	2,408	2,667	2,836	3,039	3,292	3,511	3,904	4,151	4,397
9	603	689	815	848	948	1,023	1,043	1,116	1,272	1,318
10	610	629	725	822	863	952	1,042	1,042	1,125	1,269
11	493	629	640	728	839	871	968	1,069	1,039	1,116
12	474	515	626	641	720	838	875	974	1,067	1,047
9-12 Total	2,180	2,462	2,806	3,039	3,370	3,684	3,928	4,201	4,503	4,750
Total	9,575	10,811	12,105	13,101	14,205	15,251	16,162	17,020	17,758	18,308

Source: Olentangy Local School District

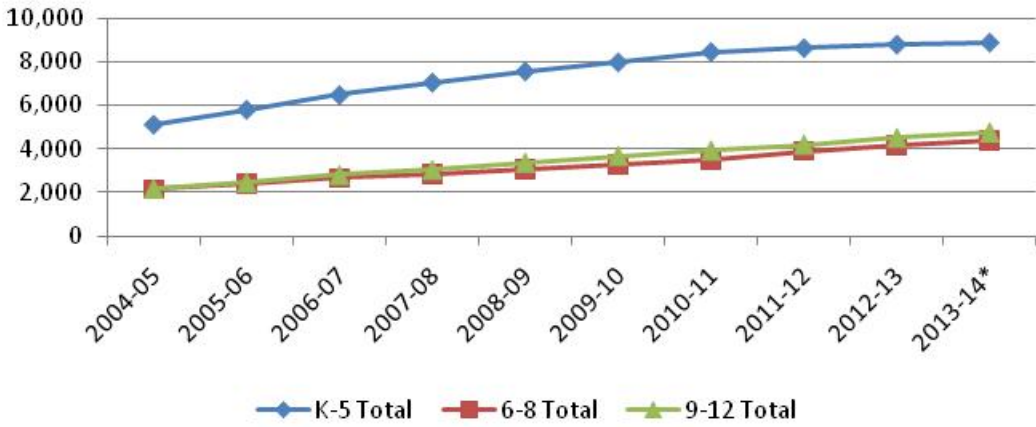
* as of September 4, 2013

Olentangy Local Schools

Olentangy Local School District
Historical Enrollment



Olentangy Local School District
Historical Enrollment by Grade Group



LIVE BIRTH DATA

Utilization of live birth data is recommended when projecting future kindergarten enrollments. This data provides a helpful overall trend. Large bubbles in birth counts, either up or down, can also be planned for or anticipated by the District.

In addition, the live birth counts are used in determining a birth-to-kindergarten survival ratio. This ratio identifies the percentage of children born in a representative area who attend kindergarten in the District five years later. The survival ratios for birth-to-kindergarten as well as grades 1-12 can be found later in this report.

The Ohio Department of Health [ODH] data warehouse provides information about live birth events for Ohio residents. Information about events occurring outside of Ohio to Ohio residents is included. Information about events occurring inside Ohio to non-Ohio residents is not included.

Data is arranged by the residence of the mother. For example, if a mother lives in Powell, Delaware County but delivers her baby in Columbus, Franklin County, the birth is counted in Powell, Delaware County.

The number of live births is recorded by:

- ▶ State
- ▶ County
- ▶ City/Town
- ▶ Census Tract
- ▶ Address [not available to the public]

Live birth counts are different from live birth rates. The live birth count is simply the actual number of live births. A birth rate is the number of births per 1,000 women in a specified population group. Birth rates are provided for counties and for 9 age groups from 10-14 years to 45+ years.

Olentangy Local Schools

The following chart and graph include the live birth count for zip codes 43015, 43016, 43017, 43021, 43035, 43065, 43074, 43081, 43082, 43235, and 43240. However, upon analysis of the map on page 10, only zip codes 43035, 43065, and 43240 were used for projection purposes.

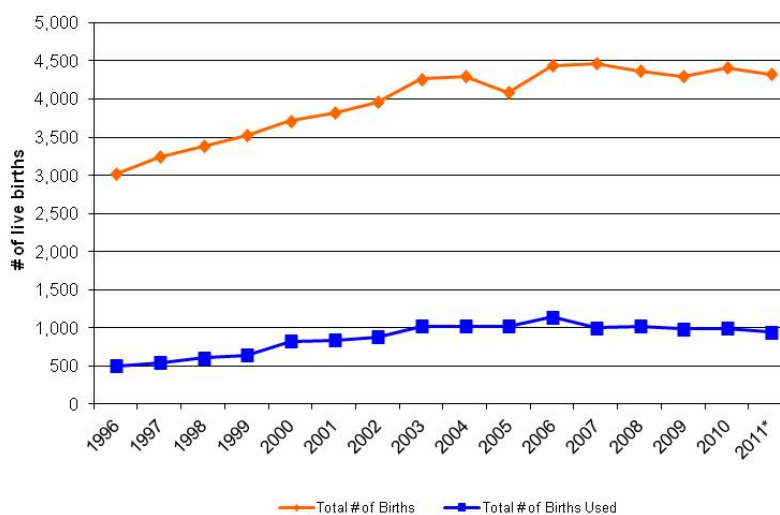
**Olentangy Local School District
Live Birth Counts by Zip Code**

Year	43015	43016	43017	43021	43035	43065	43074	43081	43082	43235	43240	Total # of Births	Total # of Births Used
1997	478	277	458	45	153	392	117	671	167	481	0	3,239	545
1998	467	275	481	55	192	410	92	703	220	480	4	3,379	606
1999	536	295	468	58	260	370	108	732	226	460	12	3,525	642
2000	525	296	470	65	317	469	99	701	301	437	34	3,714	820
2001	594	310	452	62	346	456	112	676	329	452	33	3,822	835
2002	646	361	466	71	358	481	117	675	354	397	36	3,962	875
2003	694	361	441	82	429	542	153	654	406	451	48	4,261	1,019
2004	678	419	449	94	434	522	154	650	413	421	67	4,301	1,023
2005	622	398	409	89	437	525	151	620	372	409	53	4,085	1,015
2006	694	465	428	103	507	570	137	668	368	439	63	4,442	1,140
2007	732	494	460	129	447	477	149	699	325	479	75	4,466	999
2008	683	495	436	112	447	505	142	702	308	467	71	4,368	1,023
2009	654	497	430	116	458	441	129	697	289	497	84	4,292	983
2010	640	521	463	113	431	490	139	711	312	516	73	4,409	994
2011*	634	522	418	118	437	435	123	769	291	510	69	4,326	941

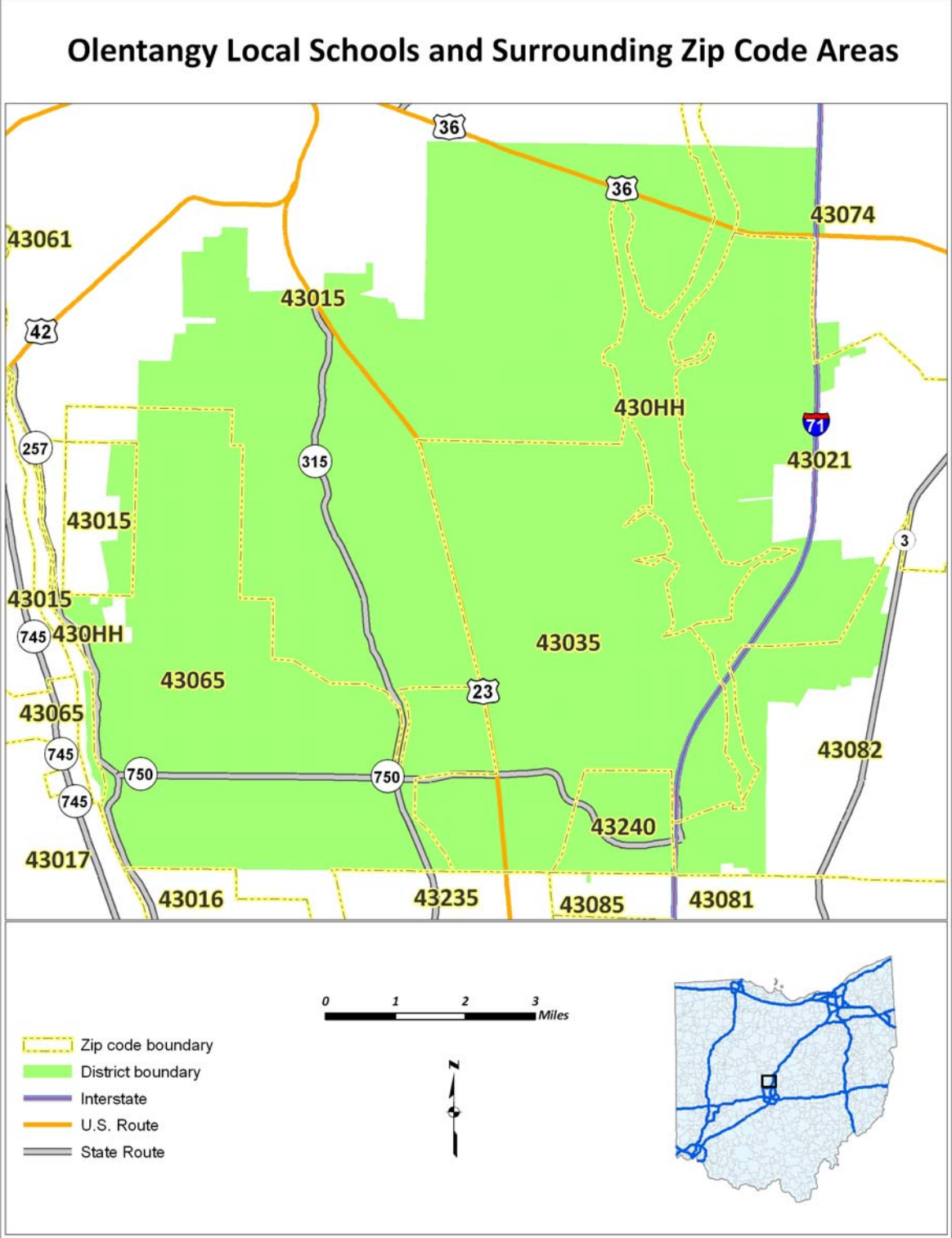
Source: Ohio Department of Health, Vital Statistics

* provisional

**Olentangy Local School District
Birth Counts by Zip Code**



Olentangy Local Schools



Olentangy Local Schools

DEMOGRAPHICS

The Olentangy Local School District is located in southern Delaware County and includes Columbus City, Delaware City, Powell City, Berkshire Township, Berlin Township, Concord Township, Delaware Township, Genoa Township, Liberty Township, and Orange Township. General demographic data is included in the following tables for the areas located completely or partially in the District.

General Demographic Information

	Delaware County
Per Capita Income	\$26,708
Median Household Income	\$50,502
Persons Below Poverty	15.9%

Source: US Census, American Community Survey 2010

Total Population

	2000 Census	2010
Delaware County	109,989	174,214
Columbus City (part)	1,891	7,245
Delaware City	25,243	34,753
Powell City	6,247	11,500
Berkshire Township#	1,946	2,428
Berlin Township	3,315	6,498
Concord Township	4,507	9,294
Delaware Township*	1,559	1,964
Genoa Township	11,293	23,093
Liberty Township**	9,182	14,581
Orange Township	12,464	26,269

Source: ODOT Policy Research & Strategic Planning Office, August 2011

does not include Galena or Sunbury villages

* does not include Delaware City

** does not include Delaware City or Powell City

Olentangy Local Schools

Included are block group estimates and projections provided by ESRI Business Information Solutions (ESRI BIS). ESRI BIS uses a time series of estimates from the U.S. Census Bureau that includes the latest estimates and intercensal estimates adjusted for error of closure. The Census Bureau's time series is consistent, but testing has revealed improved accuracy by using a variety of sources to track county population trends.

ESRI BIS also employs a time series of building permits and housing starts plus residential deliveries. Finally, local data sources that tested well against Census 2000 are reviewed. Data sources are integrated and then analyzed by Census Block Groups.

Sources of data include:

- ▶ Supplementary Surveys of the Census Bureau
- ▶ Bureau of Labor Statistics' (BLS) Local Area Unemployment Statistics
- ▶ BLS Occupational Employment Statistics
- ▶ *InfoUSA*
- ▶ U.S. Bureau of the Census' Current Population Survey
- ▶ National Planning Association Data Service

The following table illustrates the current estimates and 5-year population projections based on block groups that comprise the school district, indicating areas of current and projected growth in selected age groups.

The total estimated 2013 population in the District is 78,880. This population is projected to increase by 8,654 people, or approximately 11% over a 5-year period. The 0-18 year-old population in the District currently totals 26,225. This population is projected to increase by 3,187 children, or approximately 12 percent.

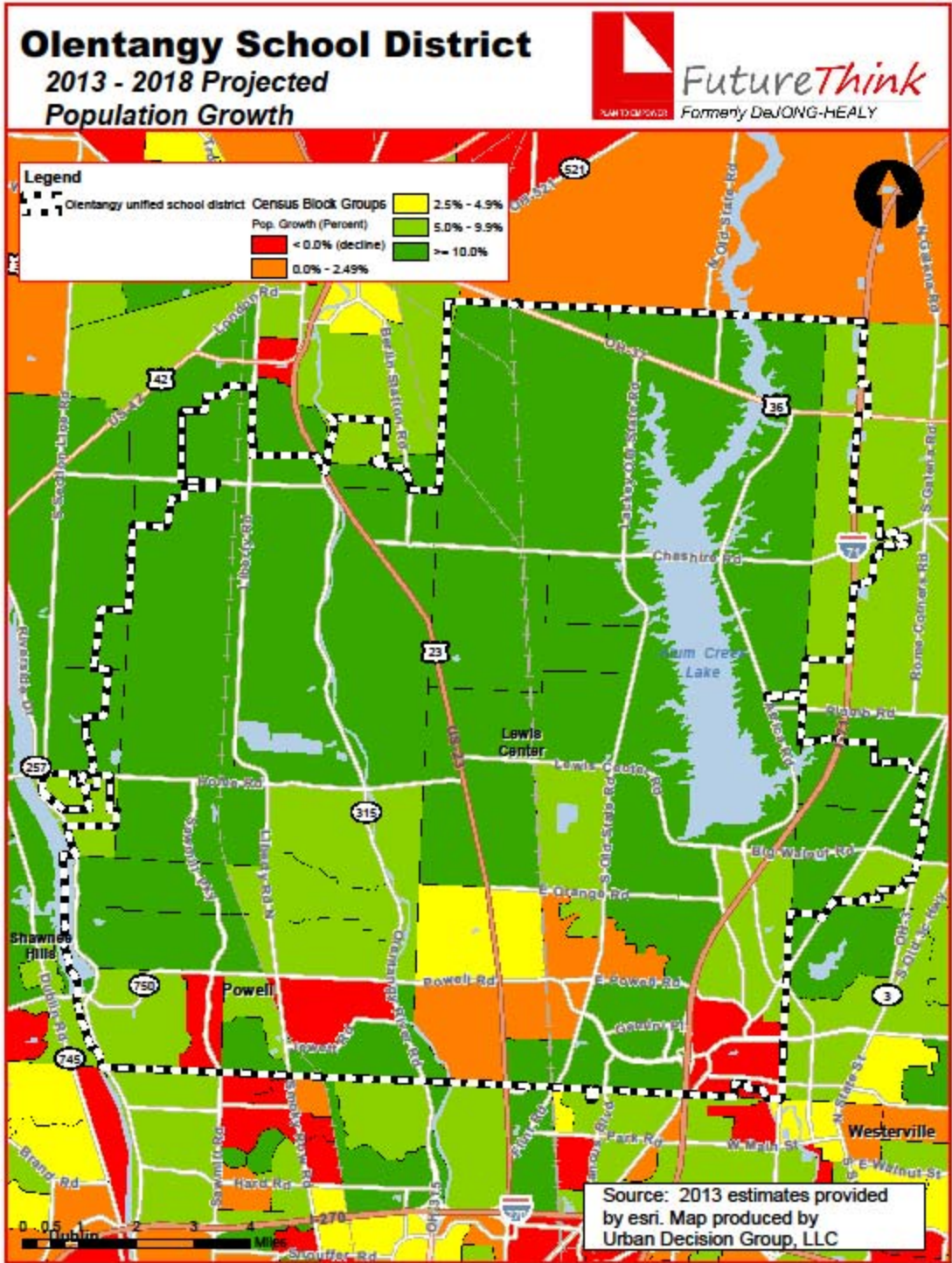
Olentangy Local School District	2010	2013 Estimate	2018 Projection
Total Population	73,731	78,880	87,534
Population Ages 0-4	6,307	6,334	6,937
Population Ages 5-9	7,828	7,707	8,213
Population Ages 10-14	6,522	7,777	8,816
Population Ages 15-18	4,018	4,407	5,446
Total Ages 0-18	24,675	26,225	29,412

Source: ESRI BIS

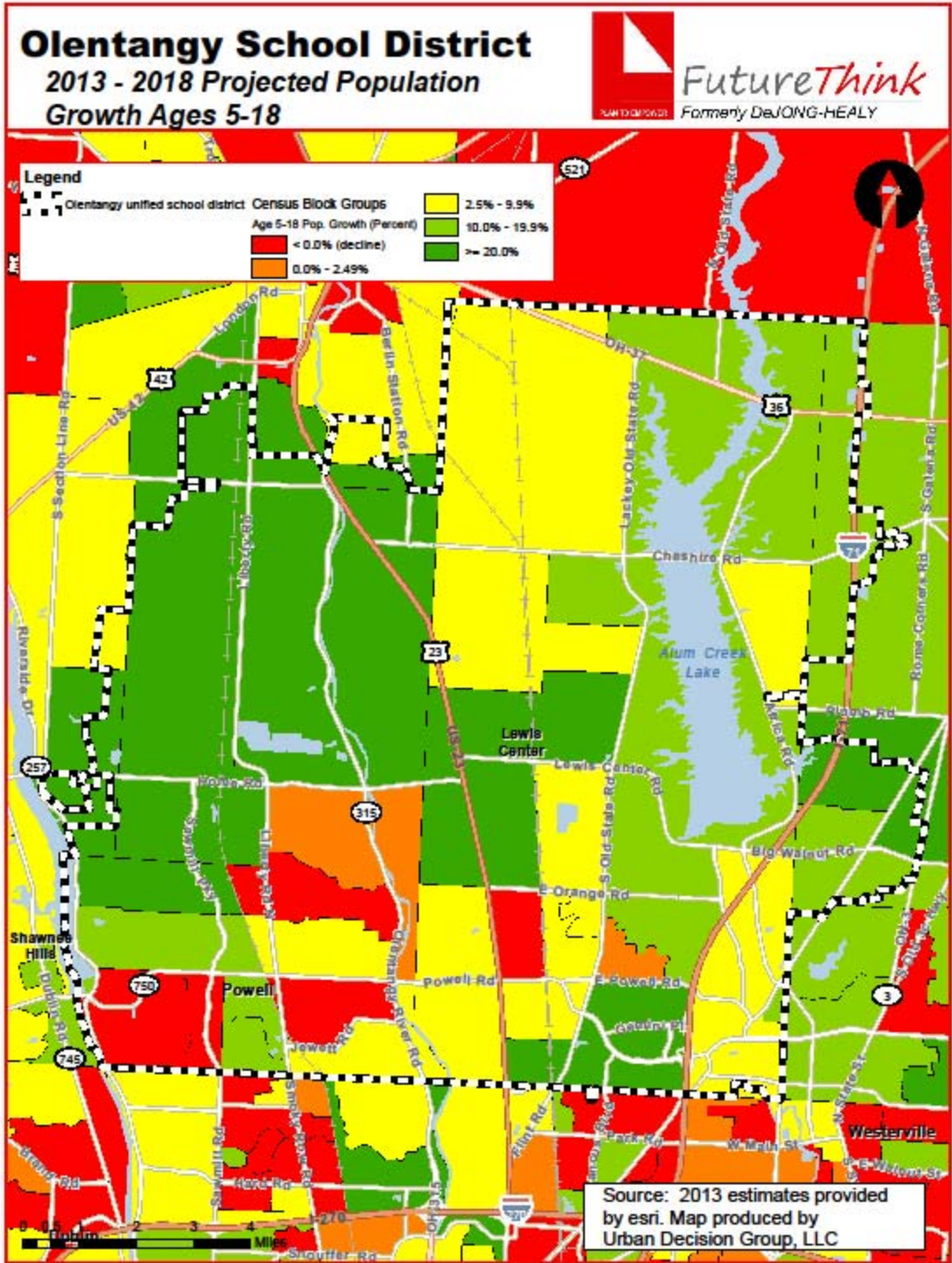
Olentangy Local Schools

The maps on the following pages illustrate the data related to population and household income growth. The color coding identifies areas within the District that may be increasing or decreasing at different rates than others.

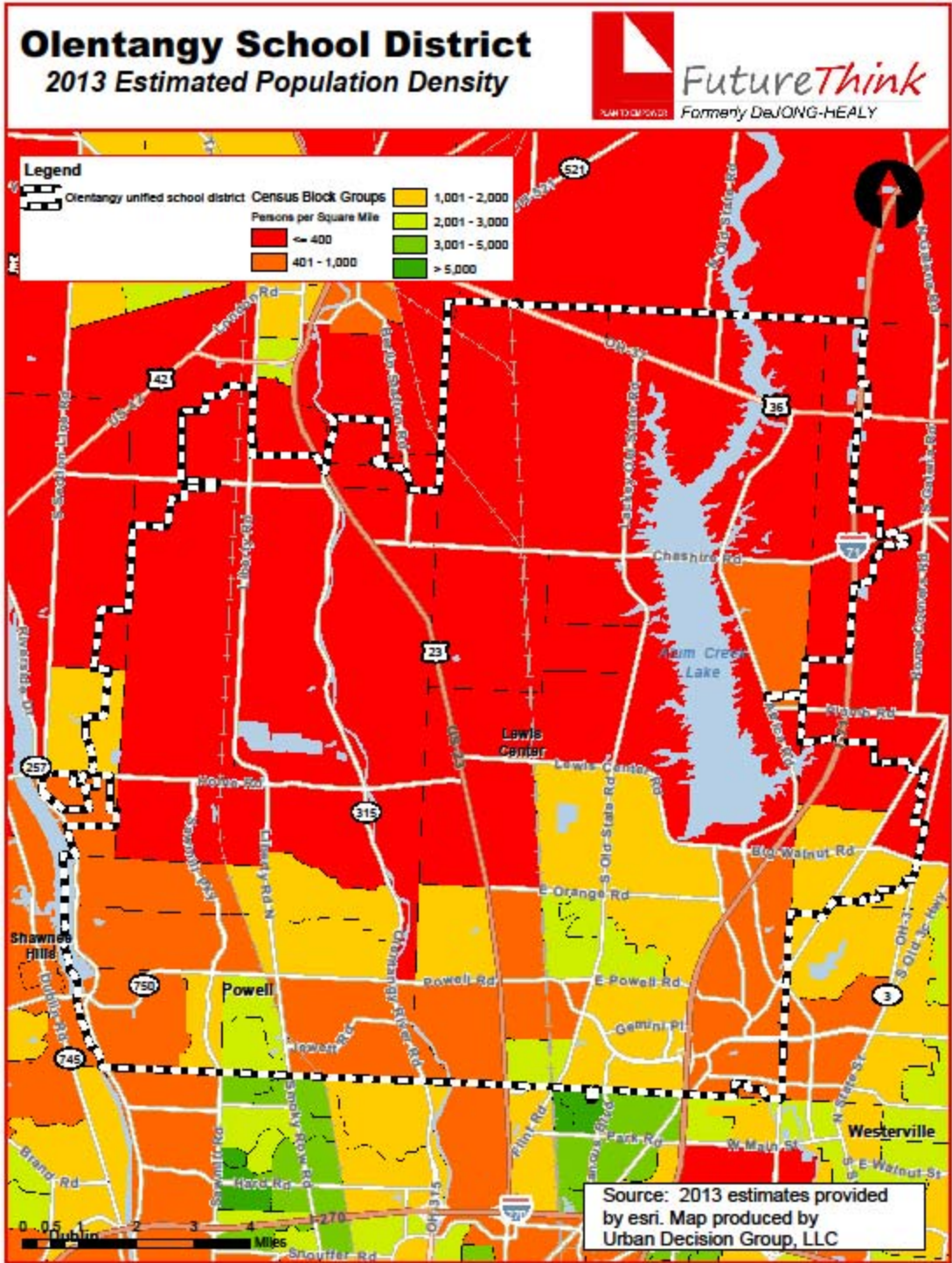
Olentangy Local Schools



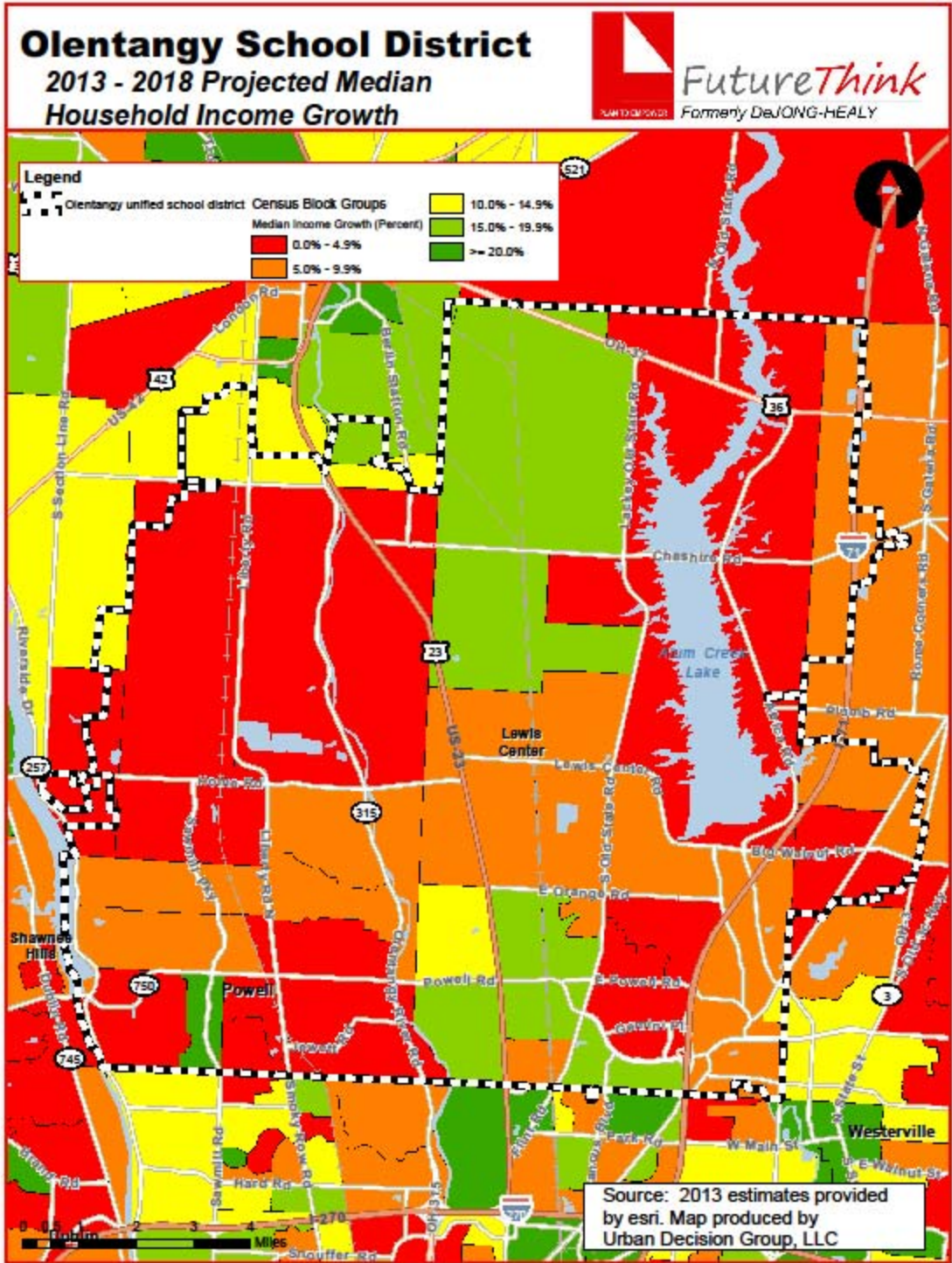
Olentangy Local Schools



Olentangy Local Schools



Olentangy Local Schools



Olentangy Local Schools

HOUSING INFORMATION

The following chart illustrates housing trends in the Olentangy Local School District since 2002. The number of single-family permits issued increased steadily through 2004 then declined. In 2011, the permits totaled over 400 for the first time since 2007. Permits increased in 2012 as well. Please note that data for Delaware City was not yet available for 2012 and 2013.

**Olentangy Local School District
Single Family Building Permit Data**

Year	Berkshire Twp	Berlin Twp	Concord Twp	Delaware Twp	Genoa Twp	Liberty Twp	Orange Twp	Delaware City	City of Powell	City of Columbus	Total
2002	1	154	101	8	179	227	494	25	127	180	1,496
2003	1	123	94	17	144	170	574	99	261	101	1,584
2004	8	97	72	4	154	179	767	102	209	139	1,731
2005	12	84	52	9	194	165	405	92	216	164	1,393
2006	20	66	13	8	96	102	216	72	138	37	768
2007	23	40	12	0	78	75	227	58	94	42	649
2008	8	30	12	0	44	69	142	23	41	18	387
2009	19	20	8	1	52	30	129	24	32	14	329
2010	6	35	9	0	52	45	117	52	34	20	370
2011	9	40	11	2	65	66	170	46	45	14	468
2012	11	26	13	6	62	104	160	n/a	50	53	485
2013*	15	13	7	3	35	71	127	n/a	50	34	355

Source: Delaware County Regional Planning Commission; City of Powell; Delaware City; Columbus City

* all through August 2013, except Columbus which is through June 2013

Olentangy Local Schools

SURVIVAL RATIOS

The chart below demonstrates the changes in enrollment as students move through the system. Percentages greater than 100 indicate that there are more students than there were in the previous grade the previous year. In other words, there was growth and new students were added to the system. Percentages less than 100 indicate that there was decline or students left the system.

The following table illustrates the survival ratios used in developing the enrollment projections for the Olentangy Local Schools.

from	to	birth -> K	K->1	1->2	2->3	3->4	4->5	5->6	6->7	7->8	8->9	9->10	10->11	11->12
2004	2005	131.7%	117.6%	106.2%	107.6%	108.3%	105.2%	107.5%	103.6%	105.4%	104.4%	104.3%	103.1%	104.5%
2005	2006	137.7%	114.5%	107.5%	104.5%	108.7%	106.6%	105.1%	104.5%	104.4%	107.8%	105.2%	101.7%	99.5%
2006	2007	137.5%	114.8%	102.7%	103.3%	103.5%	101.7%	102.3%	104.2%	102.1%	101.2%	100.9%	100.4%	100.2%
2007	2008	123.0%	109.6%	101.1%	103.9%	104.1%	105.6%	102.8%	103.9%	101.1%	104.6%	101.8%	102.1%	98.9%
2008	2009	128.9%	113.5%	102.4%	101.6%	103.2%	99.8%	103.1%	102.4%	101.7%	103.0%	100.4%	100.9%	99.9%
2009	2010	132.3%	112.8%	102.7%	102.1%	103.2%	101.2%	104.3%	99.9%	100.5%	104.1%	101.9%	101.7%	100.5%
2010	2011	117.6%	110.0%	100.7%	101.8%	102.3%	100.6%	102.6%	103.4%	102.3%	102.3%	99.9%	102.6%	100.6%
2011	2012	124.2%	112.1%	102.9%	104.0%	101.5%	102.8%	102.3%	100.9%	102.0%	103.3%	100.8%	99.7%	99.8%
2012	2013	125.3%	113.1%	100.9%	102.8%	101.6%	101.0%	103.2%	101.8%	100.5%	102.7%	99.8%	99.2%	100.8%
	average	128.70%	113.103%	103.00%	103.5%	104.04%	102.7%	103.7%	102.7%	102.2%	103.721%	101.658%	101.273%	100.510%
	standard deviation	6.392%	2.317%	2.234%	1.726%	2.515%	2.307%	1.610%	1.494%	1.583%	1.769%	1.807%	1.236%	1.501%

ENROLLMENT PROJECTIONS

Based on the current trends seen in the District, **FutureThink** recommends the following enrollment projection methodology.

Pre-K

The preschool projection is based on kindergarten enrollment. Last year, we used a percentage of 24.66%, which we applied again this year to determine the Pre-K projection.

Kindergarten

For kindergarten, the average survival ratio of the past 3 years was used for birth to k through 2013-14. Starting in the 2014-15 school year, a 0.5% growth factor was applied to the previous year's enrollment.

Grades 1-12

For grades 1-12, the average survival ratio of the past 2 years was applied.

2012-13 End of Year Projection

The 2012-13 "End of Year" projection was determined by applying the difference of .73% between the actual September 4, 2013 and previous projected enrollment for 2013-14 and adding it to the current enrollment.

For example, the current kindergarten enrollment is 1,282. By adding .73% [or 9 students] to that number, the end of year kindergarten enrollment is projected to be 1,291 students.

Olentangy Local Schools

Student enrollment is projected to increase by 2,497 students in grades Pre-K-12 from the 2013-14 to the 2023-24 school year. The following table and graphs illustrate projected enrollments by grade and grade group through the 2023-24 school year.

**Olentangy Local School District
Projected Enrollment**

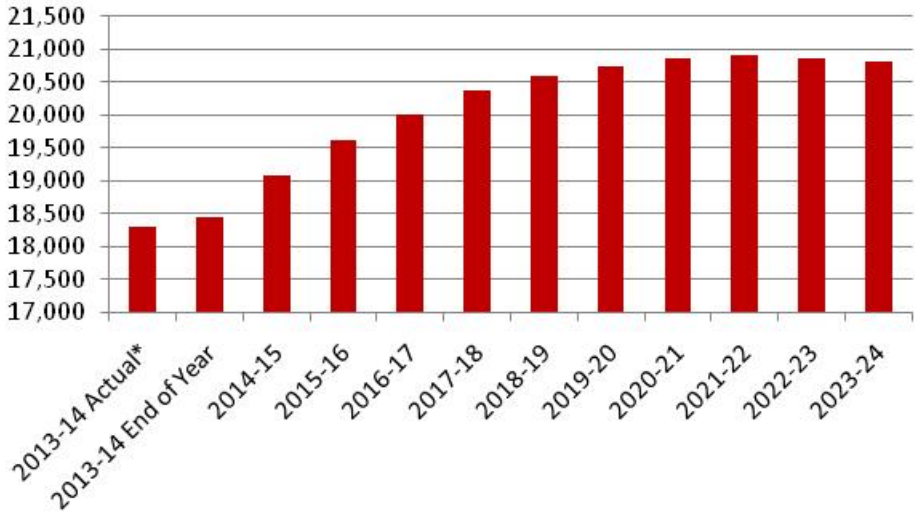
	2013-14 Actual*	2013-14 End of Year	2014-15	2015-16	2016-17	2017-18	2018-19	2019-20	2020-21	2021-22	2022-23	2023-24
Pre-K	288	290	306	308	309	311	313	314	316	317	319	320
K	1,282	1,291	1,241	1,247	1,253	1,260	1,266	1,272	1,279	1,285	1,292	1,298
1	1,404	1,414	1,454	1,397	1,404	1,411	1,418	1,425	1,433	1,440	1,447	1,454
2	1,516	1,527	1,441	1,482	1,424	1,431	1,438	1,445	1,453	1,460	1,467	1,474
3	1,562	1,573	1,579	1,490	1,532	1,472	1,480	1,487	1,494	1,502	1,509	1,517
4	1,584	1,596	1,599	1,605	1,514	1,557	1,496	1,503	1,511	1,518	1,526	1,534
5	1,525	1,536	1,627	1,629	1,635	1,543	1,586	1,524	1,532	1,539	1,547	1,555
K-5 Total	8,873	8,937	8,941	8,850	8,762	8,674	8,684	8,656	8,702	8,744	8,788	8,832
6	1,496	1,507	1,578	1,671	1,673	1,679	1,585	1,629	1,565	1,573	1,581	1,589
7	1,466	1,476	1,529	1,600	1,694	1,696	1,703	1,607	1,652	1,587	1,595	1,603
8	1,435	1,445	1,494	1,550	1,622	1,718	1,720	1,727	1,629	1,675	1,609	1,618
6-8 Total	4,397	4,428	4,601	4,821	4,989	5,093	5,008	4,963	4,846	4,835	4,785	4,810
9	1,318	1,328	1,489	1,539	1,596	1,671	1,769	1,772	1,778	1,678	1,725	1,658
10	1,269	1,278	1,332	1,493	1,544	1,601	1,676	1,775	1,777	1,784	1,683	1,730
11	1,116	1,124	1,272	1,326	1,486	1,536	1,593	1,668	1,766	1,768	1,775	1,675
12	1,047	1,055	1,128	1,276	1,330	1,490	1,541	1,598	1,673	1,771	1,773	1,780
9-12 Total	4,750	4,785	5,221	5,634	5,956	6,298	6,579	6,813	6,994	7,001	6,956	6,843
Total	18,308	18,440	19,069	19,613	20,016	20,376	20,584	20,746	20,858	20,897	20,848	20,805

Source: FutureThink

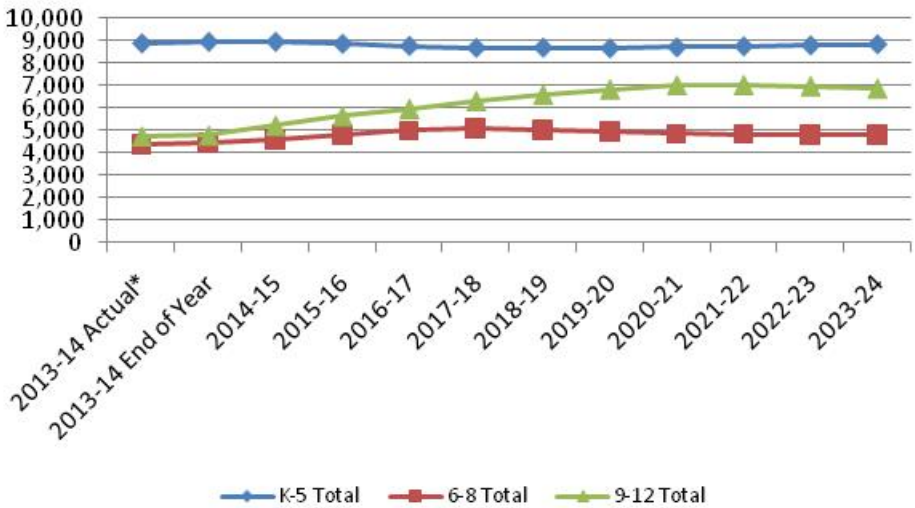
* as of September 4, 2013

Olentangy Local Schools

Olentangy Local School District
Projected Enrollment



Olentangy Local School District
Projected Enrollment by Grade Group



Olentangy Local Schools

COMPARISON TO 2012 ENROLLMENT PROJECTION

Last year's projection is illustrated in the following table. For the 2022-23 school year, the difference between this projection (21,058) and the current projection (20,848) is 210 students.

The difference at the Pre-K level is 4 students, and at the elementary school level, it is 51 students.

The difference at the middle school level is 39 students, and at the high school level, it is 116 students.

Olentangy Local School District
Projected Enrollment

	2012-13 Actual*	2012-13 End of Year	2013-14	2014-15	2015-16	2016-17	2017-18	2018-19	2019-20	2020-21	2021-22	2022-23
Pre-K	315	318	323	311	312	314	315	317	318	320	322	323
K	1,241	1,249	1,309	1,258	1,264	1,270	1,277	1,283	1,290	1,296	1,303	1,309
1	1,503	1,513	1,386	1,461	1,404	1,411	1,418	1,425	1,432	1,439	1,447	1,454
2	1,520	1,530	1,535	1,415	1,492	1,434	1,441	1,448	1,455	1,462	1,470	1,477
3	1,559	1,569	1,561	1,576	1,453	1,532	1,472	1,479	1,487	1,494	1,501	1,509
4	1,510	1,520	1,596	1,598	1,613	1,487	1,568	1,506	1,514	1,521	1,529	1,537
5	1,450	1,460	1,534	1,621	1,623	1,639	1,510	1,592	1,530	1,538	1,545	1,553
K-5 Total	8,783	8,841	8,921	8,929	8,849	8,773	8,686	8,733	8,708	8,750	8,795	8,839
6	1,440	1,450	1,495	1,581	1,671	1,672	1,689	1,556	1,641	1,577	1,585	1,593
7	1,428	1,437	1,461	1,516	1,603	1,694	1,696	1,712	1,578	1,664	1,599	1,607
8	1,283	1,291	1,451	1,484	1,540	1,629	1,721	1,723	1,739	1,603	1,690	1,624
6-8 Total	4,151	4,178	4,407	4,581	4,814	4,995	5,106	4,991	4,958	4,844	4,874	4,824
9	1,272	1,280	1,325	1,498	1,532	1,590	1,682	1,777	1,779	1,796	1,655	1,745
10	1,125	1,132	1,283	1,336	1,511	1,545	1,603	1,696	1,792	1,794	1,811	1,669
11	1,039	1,046	1,140	1,300	1,354	1,531	1,566	1,625	1,718	1,816	1,818	1,835
12	1,067	1,074	1,043	1,144	1,304	1,358	1,536	1,570	1,629	1,724	1,821	1,823
9-12 Total	4,503	4,532	4,791	5,278	5,701	6,024	6,387	6,668	6,918	7,130	7,105	7,072
Total	17,752	17,869	18,442	19,099	19,676	20,106	20,494	20,709	20,902	21,044	21,096	21,058

Source: DeJONG-HEALY

* as of October 3, 2012

Olentangy Local Schools

Historical and projected enrollment by school follows.

Alum Creek Elementary School Historical Enrollment

Grade	2004-05	2005-06	2006-07	2007-08	2008-09	2009-10	2010-11	2011-12	2012-13	2013-14
K	104	124	109	92	119	95	94	82	89	81
1	105	110	111	113	104	116	101	91	104	95
2	115	105	102	110	116	103	115	104	99	107
3	99	114	101	97	110	120	95	112	105	94
4	97	96	94	94	96	114	115	91	119	107
5	101	101	88	90	96	92	112	115	92	124
Total	621	650	605	596	641	640	632	595	608	608

Alum Creek Elementary School Projected Enrollment

Grade	2013-14	2014-15	2015-16	2016-17	2017-18	2018-19	2019-20	2020-21	2021-22	2022-23	2023-24
K	81	81	81	82	82	83	83	83	84	84	85
1	95	90	89	89	90	90	91	91	92	92	92
2	107	101	95	94	93	94	94	95	96	97	97
3	94	108	101	95	94	95	95	96	96	96	97
4	107	96	110	102	96	95	95	96	97	97	98
5	124	111	98	113	104	98	97	97	98	99	99
Total	608	587	574	575	559	555	555	558	563	565	568

Arrowhead Elementary School Historical Enrollment

Grade	2004-05	2005-06	2006-07	2007-08	2008-09	2009-10	2010-11	2011-12	2012-13	2013-14
K	85	108	117	63	90	109	90	45	61	70
1	114	101	118	103	84	89	103	83	58	64
2	108	114	100	90	110	80	77	102	69	61
3	99	107	109	94	107	105	79	82	101	70
4	107	105	113	95	100	102	86	77	74	104
5	96	114	114	78	107	104	85	82	70	75
Total	609	649	671	523	598	589	520	471	433	444

Arrowhead Elementary School Projected Enrollment

Grade	2013-14	2014-15	2015-16	2016-17	2017-18	2018-19	2019-20	2020-21	2021-22	2022-23	2023-24
K	70	61	62	63	63	63	63	64	65	65	65
1	64	71	62	61	63	63	63	64	64	65	65
2	61	61	68	58	59	62	62	61	61	61	62
3	70	61	62	68	58	58	60	61	60	60	60
4	104	69	59	60	65	55	56	59	59	58	58
5	75	102	66	58	58	63	53	54	57	58	56
Total	444	425	379	368	366	364	357	363	366	367	366

Olentangy Local Schools

Cheshire Elementary Historical Enrollment

Grade	2004-05	2005-06	2006-07	2007-08	2008-09	2009-10	2010-11	2011-12	2012-13	2013-14
K							95	69	91	100
1							79	102	97	105
2							82	82	99	100
3							74	89	92	113
4							69	74	91	88
5							68	75	77	96
Total							467	491	547	602

Cheshire Elementary Projected Enrollment

Grade	2013-14	2014-15	2015-16	2016-17	2017-18	2018-19	2019-20	2020-21	2021-22	2022-23	2023-24
K	100	89	90	90	90	91	91	92	93	93	94
1	105	112	100	100	100	101	100	101	102	103	103
2	100	110	116	103	103	104	104	105	106	107	107
3	113	113	123	130	115	116	116	116	117	118	119
4	88	114	113	122	128	116	116	116	116	117	118
5	96	95	121	119	131	137	122	123	123	123	124
Total	602	633	663	664	667	665	649	653	657	661	665

Freedom Trail Elementary Historical Enrollment

Grade	2004-05	2005-06	2006-07	2007-08	2008-09	2009-10	2010-11	2011-12	2012-13	2013-14
K						103	105	78	82	85
1						125	112	115	111	93
2						110	127	113	112	113
3						93	108	120	119	115
4						97	96	106	120	117
5						85	94	100	109	115
Total						613	642	632	653	638

Freedom Trail Elementary Projected Enrollment

Grade	2013-14	2014-15	2015-16	2016-17	2017-18	2018-19	2019-20	2020-21	2021-22	2022-23	2023-24
K	85	84	84	85	85	85	85	86	87	87	87
1	93	102	100	100	99	100	100	101	102	103	103
2	113	94	102	100	101	101	102	101	102	103	103
3	115	118	98	106	103	104	104	105	106	107	108
4	117	116	118	98	106	104	104	104	105	106	106
5	115	119	116	118	98	107	104	104	104	105	106
Total	638	633	618	607	592	601	599	601	606	611	613

Olentangy Local Schools

Glen Oak Elementary School Historical Enrollment

Grade	2004-05	2005-06	2006-07	2007-08	2008-09	2009-10	2010-11	2011-12	2012-13	2013-14
K		126	108	109	115	113	134	82	97	97
1		128	119	113	126	97	116	133	106	101
2		84	94	102	119	99	103	118	97	97
3		87	78	93	94	82	105	111	91	100
4		77	82	86	95	88	81	108	79	98
5		56	75	68	88	68	93	80	74	83
Total		558	556	571	637	547	632	632	544	576

Glen Oak Elementary School Projected Enrollment

Grade	2013-14	2014-15	2015-16	2016-17	2017-18	2018-19	2019-20	2020-21	2021-22	2022-23	2023-24
K	97	91	92	92	92	93	93	94	95	95	95
1	101	100	93	93	94	94	95	96	96	97	97
2	97	102	100	93	94	94	95	96	96	96	97
3	100	102	106	104	97	97	98	99	99	99	99
4	98	105	106	110	109	101	100	103	103	103	103
5	83	102	107	108	112	110	103	103	105	105	106
Total	576	602	604	600	598	589	584	591	594	595	597

Heritage Elementary School Historical Enrollment

Grade	2004-05	2005-06	2006-07	2007-08	2008-09	2009-10	2010-11	2011-12	2012-13	2013-14
K								324	79	84
1									95	102
2									103	102
3									95	113
4									91	100
5									83	93
Total								324	546	594

Heritage Elementary School Projected Enrollment

Grade	2013-14	2014-15	2015-16	2016-17	2017-18	2018-19	2019-20	2020-21	2021-22	2022-23	2023-24
K	84	77	78	78	78	78	78	79	79	80	81
1	102	102	92	93	92	93	93	94	95	95	96
2	102	111	110	99	99	100	100	101	102	102	102
3	113	113	121	121	109	110	110	108	111	112	113
4	100	120	119	127	127	114	115	115	115	117	118
5	93	104	123	121	130	129	118	119	119	119	121
Total	594	627	643	639	635	624	614	616	621	625	631

Olentangy Local Schools

Indian Springs Elementary Historical Enrollment

Grade	2004-05	2005-06	2006-07	2007-08	2008-09	2009-10	2010-11	2011-12	2012-13	2013-14
K	128	138	115	95	132	86	109	79	90	92
1	104	153	132	138	108	134	110	113	105	102
2	82	118	138	117	139	101	133	118	113	109
3	98	94	114	99	114	142	87	128	117	115
4	103	100	82	93	97	115	111	97	126	117
5	87	102	87	65	97	92	95	108	98	130
Total	602	705	668	607	687	670	645	643	649	665

Indian Springs Elementary Projected Enrollment

Grade	2013-14	2014-15	2015-16	2016-17	2017-18	2018-19	2019-20	2020-21	2021-22	2022-23	2023-24
K	92	85	86	87	87	87	88	89	89	89	89
1	102	106	97	98	98	99	99	99	100	100	100
2	109	106	109	100	101	101	101	102	102	104	104
3	115	109	105	109	100	101	101	101	102	102	103
4	117	116	109	105	108	99	101	101	101	102	102
5	130	121	118	111	107	111	102	103	103	103	104
Total	665	643	624	610	601	598	592	595	597	600	602

Johnnycake Corners Elementary School Historical Enrollment

Grade	2004-05	2005-06	2006-07	2007-08	2008-09	2009-10	2010-11	2011-12	2012-13	2013-14
K				61	74	67	85	73	85	67
1				79	71	85	78	86	110	102
2				65	83	80	90	79	92	113
3				59	73	84	88	101	82	94
4				63	68	75	88	95	108	89
5				68	69	65	72	92	100	113
Total				395	438	456	501	526	577	578

Johnnycake Corners Elementary School Projected Enrollment

Grade	2013-14	2014-15	2015-16	2016-17	2017-18	2018-19	2019-20	2020-21	2021-22	2022-23	2023-24
K	67	76	77	77	78	78	78	78	79	79	80
1	102	83	92	93	94	94	95	95	96	96	96
2	113	109	88	98	99	99	99	100	100	101	101
3	94	122	117	94	105	106	106	107	107	107	109
4	89	102	131	125	102	114	114	115	115	115	115
5	113	94	107	137	131	106	120	120	120	120	121
Total	578	586	612	624	609	597	612	615	617	618	622

Olentangy Local Schools

Liberty Tree Elementary School Historical Enrollment

Grade	2004-05	2005-06	2006-07	2007-08	2008-09	2009-10	2010-11	2011-12	2012-13	2013-14
K				104	121	164	104	95	83	96
1				85	139	122	137	108	106	95
2				74	96	135	114	135	101	112
3				77	86	92	121	115	118	101
4				63	89	94	116	120	94	118
5				58	76	87	105	117	109	93
Total				461	607	694	697	690	611	615

Liberty Tree Elementary School Projected Enrollment

Grade	2013-14	2014-15	2015-16	2016-17	2017-18	2018-19	2019-20	2020-21	2021-22	2022-23	2023-24
K	96	89	90	90	90	91	92	92	93	93	93
1	95	107	98	99	99	99	100	100	100	101	101
2	112	96	107	99	100	99	99	101	101	101	102
3	101	112	95	106	98	99	99	99	100	100	100
4	118	103	113	96	107	99	99	100	100	101	101
5	93	119	103	113	97	108	99	99	100	100	101
Total	615	626	606	603	591	595	588	591	594	596	598

Oak Creek Elementary School Historical Enrollment

Grade	2004-05	2005-06	2006-07	2007-08	2008-09	2009-10	2010-11	2011-12	2012-13	2013-14
K	113	122	98	130	124	103	121	75	99	106
1	126	104	126	109	137	105	102	117	110	98
2	106	126	114	121	104	118	100	103	117	95
3	101	99	98	110	120	93	121	91	99	110
4	111	101	86	93	103	93	96	118	93	104
5	89	104	83	87	98	89	96	95	116	91
Total	646	656	605	650	686	601	636	599	634	604

Oak Creek Elementary School Projected Enrollment

Grade	2013-14	2014-15	2015-16	2016-17	2017-18	2018-19	2019-20	2020-21	2021-22	2022-23	2023-24
K	106	96	97	97	98	98	99	99	99	100	100
1	98	108	97	97	98	99	99	100	100	100	101
2	95	97	106	95	96	96	97	98	98	98	98
3	110	93	94	103	92	94	94	94	95	95	95
4	104	113	95	96	105	94	95	95	95	96	97
5	91	105	113	95	96	106	94	95	95	96	97
Total	604	612	602	583	585	587	578	581	582	585	588

Olentangy Local Schools

Olentangy Meadows Elementary School	Grade	2004-05	2005-06	2006-07	2007-08	2008-09	2009-10	2010-11	2011-12	2012-13	2013-14
Historical Enrollment	K			100	118	122	120	156	85	84	122
	1			103	121	129	124	134	138	120	95
	2			77	105	116	114	116	141	99	125
	3			104	81	107	101	118	119	101	101
	4			98	107	93	91	106	119	81	99
	5			85	97	119	77	91	109	92	84
	Total			567	629	686	627	721	711	577	626

Olentangy Meadows Elementary School	Grade	2013-14	2014-15	2015-16	2016-17	2017-18	2018-19	2019-20	2020-21	2021-22	2022-23	2023-24
Projected Enrollment	K	122	101	101	101	102	103	104	105	104	105	106
	1	95	139	114	116	115	115	117	117	117	118	119
	2	125	96	141	117	117	116	116	118	119	119	120
	3	101	129	99	145	118	119	119	120	120	121	121
	4	99	101	128	98	144	118	119	116	119	121	121
	5	84	102	104	131	100	147	121	121	121	122	122
	Total	626	668	687	708	696	718	696	697	700	706	709

Scioto Ridge Elementary School	Grade	2004-05	2005-06	2006-07	2007-08	2008-09	2009-10	2010-11	2011-12	2012-13	2013-14
Historical Enrollment	K	73	98	105	114	94	44	99	73	83	68
	1	122	100	127	125	116	124	108	112	87	88
	2	91	126	100	126	131	127	107	103	107	84
	3	100	96	129	104	129	133	108	105	108	115
	4	92	101	93	123	115	135	116	110	106	114
	5	111	96	101	97	117	114	111	116	110	99
	Total	589	617	655	689	702	677	649	619	601	568

Scioto Ridge Elementary School	Grade	2013-14	2014-15	2015-16	2016-17	2017-18	2018-19	2019-20	2020-21	2021-22	2022-23	2023-24
Projected Enrollment	K	68	76	76	77	78	78	79	79	79	80	80
	1	88	77	86	86	88	88	88	88	89	89	90
	2	84	86	75	84	84	85	86	86	86	87	87
	3	115	90	91	79	88	88	90	90	90	91	92
	4	114	118	92	93	82	91	91	92	92	92	93
	5	99	115	119	92	93	82	91	91	92	92	92
	Total	568	562	539	511	513	512	525	526	528	531	534

Olentangy Local Schools

Tyler Run Elementary School Historical Enrollment

Grade	2004-05	2005-06	2006-07	2007-08	2008-09	2009-10	2010-11	2011-12	2012-13	2013-14
K	95	98	119	91	94	112	99	62	65	89
1	107	118	111	136	109	111	114	102	89	82
2	128	109	115	109	130	106	102	113	104	93
3	114	132	105	113	115	131	97	106	113	110
4	102	110	123	104	112	117	119	96	104	110
5	87	103	98	125	106	116	114	122	102	107
Total	633	670	671	678	666	693	645	601	618	621

Tyler Run Elementary School Projected Enrollment

Grade	2013-14	2014-15	2015-16	2016-17	2017-18	2018-19	2019-20	2020-21	2021-22	2022-23	2023-24
K	89	83	82	83	84	84	85	85	85	86	87
1	82	106	98	99	99	100	101	101	101	102	103
2	93	85	109	100	101	102	103	102	103	103	104
3	110	97	87	113	107	104	105	106	106	107	107
4	110	108	95	86	112	102	104	103	104	104	105
5	107	114	112	98	88	114	105	105	105	106	106
Total	591	593	583	579	591	606	603	602	604	608	612

Walnut Creek Elementary Historical Enrollment

Grade	2004-05	2005-06	2006-07	2007-08	2008-09	2009-10	2010-11	2011-12	2012-13	2013-14
K	66	122	129	116	106	80	78	55	89	60
1	120	130	114	133	118	111	94	79	113	108
2	95	126	121	119	140	91	114	94	107	112
3	96	93	120	106	106	95	91	114	116	114
4	95	97	89	120	94	120	97	103	130	112
5	107	95	91	85	101	85	120	96	117	129
Total	579	663	664	679	665	582	594	541	672	635

Walnut Creek Elementary Projected Enrollment

Grade	2013-14	2014-15	2015-16	2016-17	2017-18	2018-19	2019-20	2020-21	2021-22	2022-23	2023-24
K	60	84	83	83	84	85	85	85	85	86	86
1	108	72	99	99	99	100	101	102	102	102	103
2	112	110	73	100	100	100	101	102	102	102	103
3	114	115	112	75	102	102	103	104	104	105	105
4	112	115	116	113	75	103	103	104	105	105	106
5	129	112	116	117	113	76	103	104	104	105	105
Total	635	608	599	587	573	566	596	601	602	605	608

Olentangy Local Schools

Wyandot Run Elementary School Historical Enrollment

Grade	2004-05	2005-06	2006-07	2007-08	2008-09	2009-10	2010-11	2011-12	2012-13	2013-14
K	51	96	130	124	72	133	101	64	64	65
1	107	137	122	158	83	86	87	98	92	74
2	89	111	148	128	119	86	86	94	101	93
3	124	88	117	125	98	87	89	94	102	97
4	102	132	111	121	102	123	94	96	94	107
5	103	107	150	108	94	99	127	101	101	93
Total	576	671	778	764	568	614	584	547	554	529

Wyandot Run Elementary School Projected Enrollment

Grade	2013-14	2014-15	2015-16	2016-17	2017-18	2018-19	2019-20	2020-21	2021-22	2022-23	2023-24
K	65	68	68	68	69	69	69	69	69	70	70
1	74	78	80	81	83	83	83	84	84	84	85
2	93	77	82	84	84	85	86	85	86	86	87
3	97	96	79	83	86	87	87	88	89	89	89
4	107	102	100	83	89	91	91	92	92	92	93
5	93	110	105	103	85	91	92	94	93	94	95
Total	529	531	514	502	496	506	508	512	513	515	519

Berkshire Middle School Historical Enrollment

Grade	2004-05	2005-06	2006-07	2007-08	2008-09	2009-10	2010-11	2011-12	2012-13	2013-14
6								295	273	320
7								254	303	287
8								228	261	300
Total								777	837	907

Berkshire Middle School Projected Enrollment

Grade	2013-14	2014-15	2015-16	2016-17	2017-18	2018-19	2019-20	2020-21	2021-22	2022-23	2023-24
6	320	349	321	338	387	361	374	370	374	371	373
7	287	331	360	331	348	398	372	384	382	384	382
8	300	293	336	364	335	353	403	376	389	387	389
Total	907	973	1,017	1,033	1,070	1,112	1,149	1,130	1,145	1,142	1,144

Hyatts Middle School Historical Enrollment

Grade	2004-05	2005-06	2006-07	2007-08	2008-09	2009-10	2010-11	2011-12	2012-13	2013-14
6				202	197	257	257	281	286	282
7				201	208	202	253	225	252	283
8				175	195	212	199	231	220	252
Total				578	600	671	709	737	758	817

Hyatts Middle School Projected Enrollment

Grade	2013-14	2014-15	2015-16	2016-17	2017-18	2018-19	2019-20	2020-21	2021-22	2022-23	2023-24
6	282	291	308	287	274	254	266	247	248	254	256
7	283	285	291	308	286	273	253	265	247	248	253
8	252	284	284	291	308	286	273	253	265	247	248
Total	817	860	883	886	868	813	792	765	760	749	757

Olentangy Local Schools

Olentangy Liberty Middle School Historical Enrollment	Grade	2004-05	2005-06	2006-07	2007-08	2008-09	2009-10	2010-11	2011-12	2012-13	2013-14
	6	355	306	331	205	262	251	269	275	283	252
	7	357	314	316	240	220	265	257	272	279	281
	8	307	351	317	222	248	227	274	252	274	278
	Total	1,019	971	964	667	730	743	800	799	836	811

Olentangy Liberty Middle School Projected Enrollment	Grade	2013-14	2014-15	2015-16	2016-17	2017-18	2018-19	2019-20	2020-21	2021-22	2022-23	2023-24
	6	252	244	275	268	243	215	247	251	252	257	259
	7	281	253	243	273	268	242	213	247	250	251	256
	8	278	286	257	247	277	271	245	216	250	253	254
	Total	811	783	775	788	788	728	705	714	752	761	769

Olentangy Orange Middle School Historical Enrollment	Grade	2004-05	2005-06	2006-07	2007-08	2008-09	2009-10	2010-11	2011-12	2012-13	2013-14
	6	231	286	302	292	330	386	385	256	281	299
	7	202	262	287	292	306	341	388	233	265	282
	8	177	225	270	282	297	309	339	253	246	270
	Total	610	773	859	866	933	1,036	1,112	742	792	851

Olentangy Orange Middle School Projected Enrollment	Grade	2013-14	2014-15	2015-16	2016-17	2017-18	2018-19	2019-20	2020-21	2021-22	2022-23	2023-24
	6	299	296	333	354	347	323	345	325	326	327	328
	7	282	305	299	337	358	351	326	350	327	330	331
	8	270	294	317	311	351	372	365	339	364	341	343
	Total	851	895	949	1,002	1,056	1,046	1,036	1,014	1,017	998	1,002

Olentangy Shanahan Middle School Historical Enrollment	Grade	2004-05	2005-06	2006-07	2007-08	2008-09	2009-10	2010-11	2011-12	2012-13	2013-14
	6	202	273	312	250	273	307	312	308	317	343
	7	175	243	281	254	254	278	310	274	329	333
	8	185	196	251	231	254	255	277	267	282	335
	Total	562	712	844	735	781	840	899	849	928	1,011

Olentangy Shanahan Middle School Projected Enrollment	Grade	2013-14	2014-15	2015-16	2016-17	2017-18	2018-19	2019-20	2020-21	2021-22	2022-23	2023-24
	6	343	397	432	425	427	432	396	372	373	372	373
	7	333	354	406	443	435	438	443	405	381	382	381
	8	335	336	355	408	445	437	440	445	406	381	384
	Total	1,011	1,087	1,193	1,276	1,307	1,307	1,279	1,222	1,160	1,135	1,138

Olentangy Local Schools

Olentangy Liberty High School Historical Enrollment

Grade	2004-05	2005-06	2006-07	2007-08	2008-09	2009-10	2010-11	2011-12	2012-13	2013-14
9	298	321	383	367	355	387	393	422	479	487
10	312	305	325	383	347	356	382	404	420	481
11	244	316	301	323	370	339	352	401	392	410
12	229	264	322	305	336	375	323	364	406	400
Total	1,083	1,206	1,331	1,378	1,408	1,457	1,450	1,591	1,697	1,778

Olentangy Liberty High School Projected Enrollment

Grade	2013-14	2014-15	2015-16	2016-17	2017-18	2018-19	2019-20	2020-21	2021-22	2022-23	2023-24
9	487	523	557	522	521	569	552	516	472	524	512
10	481	493	527	561	525	523	573	555	518	475	526
11	410	473	483	515	549	512	511	559	542	505	462
12	400	421	482	492	524	560	522	521	571	553	515
Total	1,778	1,910	2,049	2,090	2,119	2,164	2,158	2,151	2,103	2,057	2,015

Olentangy High School Historical Enrollment

Grade	2004-05	2005-06	2006-07	2007-08	2008-09	2009-10	2010-11	2011-12	2012-13	2013-14
9	314	387	431	484	277	317	311	336	390	418
10	303	328	396	441	255	281	326	312	339	393
11	255	316	331	391	221	255	287	334	317	345
12	257	271	310	337	388	229	245	285	334	314
Total	1,129	1,302	1,468	1,653	1,141	1,082	1,169	1,267	1,380	1,470

Olentangy High School Projected Enrollment

Grade	2013-14	2014-15	2015-16	2016-17	2017-18	2018-19	2019-20	2020-21	2021-22	2022-23	2023-24
9	418	494	494	540	600	626	615	636	626	586	568
10	393	419	492	492	539	600	625	614	636	625	584
11	345	397	421	494	494	541	602	628	616	638	628
12	314	346	395	419	492	491	539	601	625	614	635
Total	1,470	1,656	1,802	1,945	2,125	2,258	2,381	2,479	2,503	2,463	2,415

Orange High School Historical Enrollment

Grade	2004-05	2005-06	2006-07	2007-08	2008-09	2009-10	2010-11	2011-12	2012-13	2013-14
9					309	312	321	358	403	413
10					259	312	327	326	366	395
11					233	261	327	334	330	361
12						228	264	325	327	333
Total					801	1,113	1,239	1,343	1,426	1,502

Olentangy Orange High School Projected Enrollment

Grade	2013-14	2014-15	2015-16	2016-17	2017-18	2018-19	2019-20	2020-21	2021-22	2022-23	2023-24
9	413	470	487	533	549	572	604	625	580	614	578
10	395	418	472	490	536	552	574	607	629	583	619
11	361	400	420	475	492	539	554	577	609	631	585
12	333	360	397	417	472	488	536	550	573	605	629
Total	1,502	1,648	1,776	1,915	2,049	2,151	2,268	2,359	2,391	2,433	2,411

CONCLUSION

As with any projections, the District should continue to pay close attention to live birth counts, enrollment in the elementary schools, housing growth, and demographics. Each of these factors will have an impact on future student enrollment.

FutureThink is pleased to have had the opportunity to provide the District with enrollment projection services. We hope this document will provide the necessary information to make informed decisions about the future of the Olentangy Local Schools.