



Wellesley College Club of Los Angeles



Dear [first_name],

The holiday season is here and we have some incredible events! We'd love to celebrate with you!

- **[Annual WCLA Holiday Party on December 14!](#)** - It's our biggest event of the season and RSVPs are pouring in. Please join us and bring a friend!
- **[The Friends of Art Docent Tour of "Manet & Modern Beauty" at the Getty!](#)** -- Don't miss this special docent-guided tour.
- **Maggie Cardelus '85**, visiting from Paris, invites us to **[a cocktail reception and preview of her new jewelry design brand CARDELUS!](#)**
- **South Bay. Santa Clarita. East of the 605.** We need interviewers in L.A. County! We have 46 interviews requested so far and 11 completed. The next reports are due mid-January and mid-February. Contact **admission@wellesley.edu** to volunteer.

Wellesley Circles facilitators will be given their groupings this month and will be reaching out to our alums to schedule the neighborhood launch meetings in January. Stay tuned.

As always, please reach out with any suggestions or questions by contacting: **WCLosAngeles@alum.wellesley.edu**.

We hope to see you at an event soon!

Your WCLA Board

Upcoming Events

Events below are listed in chronological order

- December 6: Deadline to volunteer to host a Wellesley student in your workplace for the Job Shadow Program on January 14 and/or 15.
- December 7: Friends of Art Docent Tour of Manet at the Getty

- December 14: Wellesley Circles Facilitator Online Webinar
- **December 14: Wellesley at the Wellesbourne - Annual Holiday Party**
- December 15: WCLA Book Club
- December 18: Preview of Maggie Cardelus '85 Design Exhibition
- December 21: WAPA at the LGBT Senior Services Center for a Poetry Reading
- January 2020: Wellesley Circles launch in neighborhoods
- January 14 and 15, 2020: Job Shadow Program
- January 17, 2020: WAPA at an Ivy League Mixer at the Abbey's New VIP Room
- February 2020: 1st Annual All Ivy Greater Palm Springs Gathering

STAY CONNECTED

- **Wellesley Club of Los Angeles:** <https://losangeles.alum.wellesley.edu/>
- Reach the **Wellesley Club of Los Angeles:** WCLosAngeles@alum.wellesley.edu
- Wellesley Hive: <https://hive.wellesley.edu/hub/the-hive/home>
- **WCLA on Facebook**
 - **Wellesley Young Alumnae in Los Angeles:** This Facebook page is for all Wellesley Alumnae of Los Angeles/Orange County
<https://www.facebook.com/groups/102080626551375/?t=60722-304008>

UPCOMING EVENTS

Career Education Winter Job Shadow



**WELLESLEY
CAREER
EDUCATION**

Apply by December 6th!

Tell your fellow alums to join us! (Friends and partners welcome!)

Wellesley Career Education is thrilled to announce the January 2020 winter job shadow program on **January 14 and 15**. But first, we need your help. Help us make this

event possible by volunteering to host a local Wellesley student who will be in your area for winter break and is interested in learning about your particular career or industry.

What is a job Shadow?

It is an educational experience that allows students to learn more about a career path, industry, company, or role by spending time with ("shadowing") an experienced professional on the job for a designated amount of time, typically a day or less. Job shadows are much like an informational interview with the added benefit of on-site experience. You are not expected to restructure your day, but rather allow the student to accompany you to meetings and observe routine tasks in order to get a true sense of your job and company.

How do I get involved?

To participate, simply check your calendar and see if January 14 or 15 would allow you the flexibility to host a Wellesley student at your workplace for a minimum of 3 hours. After you sign up, Career Education will then do the work of matching you with a Wellesley student.

Please [CLICK HERE](#) to sign up by December 6th.

Friends of Art Docent-led Tour of Manet at the Getty



Join us for a delightful tour at one of LA's most scenic museums!

Date: Saturday, December 7, 2019

Time: 3:45 pm arrival for the 4:00 pm tour led by a docent, followed by optional group tea/wine/cocktails at the Getty restaurant

Location: [Getty Center](#) at N Sepulveda Blvd and Getty Center Drive on the westside of Los Angeles

Pricing: \$15, which covers the cost of the guided tour

Parking: We suggest arriving at 3:30 to allow time to take the train up the hill to the museum and be on time for the 3:45

arrival time for our 4:00 start. Cost for parking is \$15.

Meet: Inside the doors of the main entrance to the Museum. If you are late, please meet us in the exhibition. We plan to start on time but join us if you happen to arrive after we start.

Event/exhibit: [Manet and Modern Beauty](#).

RSVP [here](#)!

Wellesley Circles Facilitator Online Webinar



[Francine Miltenberger '78](#), who has led Circles for the Wellesley Club of Silicon Valley for the last two years, is leading an online webinar for facilitator training for those who were unable to join the in-person training session on November 23rd.

Date: Saturday, December 14, 2019

Time: 9:30-11:00am

Location: Participants will join a GoToMeeting Webinar.

Pricing: Event is free for Circles Facilitator Volunteers

Please contact WCLosAngeles@alum.wellesley.edu if you have questions.

RSVP: Register [here](#).

Wellesley at the Wellesbourne - Annual Holiday Party

WCLA returns to the Wellesbourne for our Annual Holiday Party

Join us!

Date: Saturday, December 14, 2019



Time: 5:30-7:30pm

Location: The Wellesbourne, 10929 West Pico Blvd, Los Angeles, CA 90064

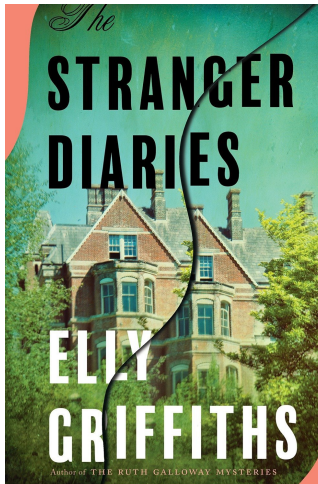
Parking: First 3 hours free across the street at the Landmark Movie Theater or public metered parking at the corner of Pico and Midvale Avenue.

Attire: Holiday!

Register: Please get tickets at the event page [here](#).

Please contact WCLosAngeles@alum.wellesley.edu if you have questions.

WCLA Book Club - December



For December we've picked *The Stranger Diaries* by Elly Griffiths. We will be meeting in the usual location as long as there is still seating available there. The construction project in that area of the museum and the closure of the LACMA Cafe means that our usual table and chairs may soon be removed. There is additional seating around the LACMA entrance area, including by the Levitated Mass exhibit, so we'll relocate there if necessary. If you come and can't locate us, make sure to call my cell (323-336-5391).

Date: Sunday, December 15

Time: 1-3pm

Location: The Los Angeles County Museum of Art (LACMA) Central Court, between the LACMA Cafe and the bookstore, 5905 Wilshire Blvd, Los Angeles, CA 90036

Parking: Either in the LACMA garage (\$12) or street parking around LACMA at meters which on Sundays are typically free.

RSVP: Email WCLA Book Club

Preview of Maggie Cardelus '85 Design Exhibition



Join a cocktail reception and preview of Maggie Cardelus '85-launched design brand, CARDELUS.

Date: Wednesday, December 18, 2019

Time: 6-9pm

Location: Squat Los Angeles

830 North Highland Ave

Los Angeles, CA 90038

RSVP: Email Maggie Cardelus by December 10th

Details: Click [here](#).

WAPA Joins the LGBT Senior Services for their Poetry Reading



Join WAPA in attending a poetry reading and supporting our community's LGBTQ seniors. Those participating are students of Steven Reigns' My Life is Poetry workshop who will share autobiographical poems voiced from experience, defiance, vulnerability, and heart. They hope that you will learn that their lives, and even your own, are poetic. Reading will last about an hour with a reception to follow.

Date: Saturday, December 21, 2019

Time: 3:00-4:30pm

Location: Los Angeles LGBT Senior Services 1118 N.

McCadden Pl Los Angeles, CA 90038

RSVP Required: Call 1-877-688-4833 and leave your name,

phone number, and specify it is for event #1121

Questions? Please contact wcla.wapa@gmail.com

WAPA Joins Ivy Pride Alliance LA for a Mixer at The Abbey's New VIP Room



Join WAPA at Ivy League Alliance LA's mixer at The Abbey's "With-In," new VIP room. No cover charge and no-host food and drink. Connect with old friends, meet new ones, and have a great evening! Co-hosted by IvyQ, Stanford Pride, Duke LGBT Network, Brown TBGALA, Cornell GALA, Harvard GSC, Harvard Club of Southern California, PennGALA, Cal Club of Los Angeles, UCLA Lambda, USC Lambda, the UChicago LGBT Alumni Group, and Princeton

BTGALA

Date: Friday, January 17, 2020

Time: 6:30-9:00pm

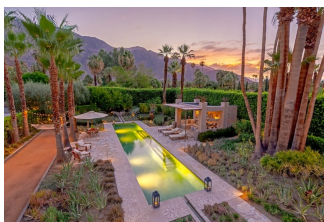
Location: The Abbey, "With-In" VIP room 696 Robertson Blvd. West Hollywood, CA 90069

RSVP Required: Please RSVP [here](#).

Questions? Please contact wcla.wapa@gmail.com

1st Annual "All Ivy" Greater Palm Springs Gathering

Tell your fellow alumni/alumnae to join us! (Friends and partners welcome!) Similar events take place in US resort cities (Naples and Vero Beach) and Europe. We are



hoping to plan more events, visits, discussions for residents and snowbirds in the future. Cash bar and light snacks.

Date: February 5, 2020

Time: 5:30-7:30pm

Location: Cimarron Country Club, 67603 30th Avenue,
Cathedral City, CA 92234

Pricing: \$10 payable at door

RSVP: By January 29, 2020 to paulasinclair1@sky.com

Questions?: Contact paulasinclair1@sky.com

The Plato Society of Los Angeles



Wellesley grads Nancy Bott '64 & Sue Allen '47 have been members of the PLATO Society of Los Angeles for many years and invite you to join them at the peer-led study discussion groups in Westwood Village.

To learn more, check out www.platola.org or contact Nancy at nancybott@verizon.net

Photo Album

Wellesley Circles Facilitator Training led by Francine Miltenberger '78 and hosted by Linda Myerson-Dean '81 at the Wine Warehouse on November 23, 2019



Career Conversation with Melissa de la Rama '01 on Managing Change during a Technological Disruption of Media and Entertainment on November 10, 2019. Hosted by Belinda Tepper '71 in her Westwood home.



Pictured from L to R are Beth Schaaf, Nicole Gebriel, Emma Stashin, Lori Dreischmeier, Sessen Mengist, Melissa de la Rama, Brenna Vredevelt, Belinda Tepper, Emily Peters, Kathrin Leuchtenburg, Fatima Burney, Lian Jue, Heather Miller, Heather Lee, and Malique Carr





Day to Make a Difference at Harvest Home on October 19, 2019



Pictured are Beth Schaaf, Emily Peters, Charlotte Kiang, Evelyn Wu, Jordan Mosley, and Rebecca Nevitt

Wellesley Circles Kick-Offs in Los Angeles and Orange County on October 6, 2019





Please check out our WCLA website to see more photos from these and other events in our [photo albums](#).

Get Involved - Shared Identity Groups (SIGs)

Wellesley in Entertainment (WIE)

If you are working or want to work in film, TV, media, communications, or the arts, join the Wellesley In Entertainment group and attend informational panels, networking events, and screenings of alum work. Contact [Kate Erickson '05](#).

Wellesley Latina Network (WLAN)

To get involved with WLAN and support Latina and Hispanic Admission/Recruitment, College Connection, and Alumnae Community at Wellesley College and in the Alumnae Network, please contact WCLosAngeles@alum.wellesley.edu

Wellesley Alumnae of African Descent (WAAD)

To get involved with WAAD, please contact [Jackie Olivier '82](#).

Wellesley Alum Pride Alliance (WAPA)

To get involved with WAPA, contact Malique Carr '05 at WCLA.WAPA@gmail.com.

Wellesley Friends of Art

To get involved or learn more, please contact [Friends of Art](#).

Wellesley Entrepreneurs' Group

If you are an entrepreneur, or interested in becoming one, and would like to join a monthly meeting of the Wellesley Entrepreneurs group for Southern California, please contact [Stephanie Sunwoo '97](#) or [Karen Jordan '91](#). Facebook: [Wellesley Entrepreneurs of Los Angeles](#)

WCLA Career and Life Transitions Group

Stuck in a rut? Try something new! New Job! New life challenge! A small group from the '80's classes have grown from gathering every two months at a Beverly Hills wine bar to getting together for "Career Conversations" led by alums in various careers. If you'd like to recommend a speaker, please email WCLosAngeles@alum.wellesley.edu.

Please Support our Club

Student Admissions - South Bay. Santa Clarita. East of the 605.

We need interviewers in LA County! Sign up now for one or two interviews and practice for next year. We have 26 interviews requested so far and 11 completed. The next reports are due mid-January and Mid-February. To learn more, click [here](#). Please contact admission@wellesley.edu to volunteer.

WCLA Board Volunteers and Event Hosts

If you are interested in serving on the WCLA board or in offering your home as a location for WCLA events, please contact WCLosAngeles@alum.wellesley.edu.

WCLA Membership

If you live in the Los Angeles area, please consider becoming a member of WCLA or renewing your membership. Membership provides discounted event tickets, and of course, the chance to support your local Wellesley Club including valuable programs such as lectures with visiting Wellesley professors and faculty, alumnae career panels, recruitment in local high schools and college fairs, and the annual Book Awards.

Lifetime Membership: One-time cost of \$500

Annual Membership Dues:

- Recent Graduate (Class of '17): \$0
- Young Alumna (Classes of '13-'16): \$25
- Regular Membership: \$50

Dues can be paid [online](#). Please be sure to log in to the WCLA site first.

If you'd prefer to pay by check, please contact WCLA Co-Treasurers for instructions.

Wellesley Banner

A friendly reminder that we have a Wellesley College banner that you can borrow for a special event. Please contact WCLosAngeles@alum.wellesley.edu.

WCLA Board

President: Lori Dreischmeier '86

Vice President: Brenna Vredevelde '05

Secretary and Website Editor: Anneliese Klein '15

Co-Treasurer: Emily Peters '09

Co-Treasurer and Wellesley Circles Co-Chair: Jocelyn Williams '86

Website/IT Manager: Sessen Mengist '15

Holiday Party Chair and Past Vice President: Erin Copenbarger '95

Alumnae Admission Representative (AAR), LA: Belinda Tepper '71

Alumnae Admission Representative (AAR), OC: Rachel Newman '08

Book Award Co-Chair: Alexandra Nagourney '13

Book Award Co-Chair: Brianne O'Donoghue '17

Newsletter Editor: Beth Schaaf '11

Communications Editor: Lisa Valera '12

Photographer and Photo Album Curator: Regina Hsu '09

Social Media: Mai Perches '10

Young Alumnae Co-Representative: Rachel Thommen '17

Young Alumnae Co-Representative: Nicole Gebriel '12

Day to Make a Difference/Community Service Chair: Charlotte Kiang '13

Membership Co-Chair: Nisha Bedi Donley '10

Membership Co-Chair: Connie Su '09

Wellesley Circles Co-Chair and Faculty Speaker Chair: Ilene Tsui '10

Wellesley Circles Co-Chair - LA: Victoria George '05

Wellesley Circles Co-Chair - LA/South Bay: Lily Kim '06

Wellesley Circles Co-Chair - OC: Ashtyn Coleman '17

Wellesley Circles Co-Chair - OC: Kyhm Penfil '87

SHARED INTEREST GROUPS (SIGs)

Wellesley in Entertainment (WIE) Co-Rep: Kate Erickson '05

Wellesley in Entertainment (WIE) Co-Rep: Katie Barsotti '15

WLAN Co-Rep: Brianna Calleros '12

WLAN Co-Rep: Mariaesther Moncada '12

WAAD Representative: Jackie Olivier '82

WAPA Representative: Malique Carr '05

Wellesley Entrepreneurs Representative: Stephanie Sunwoo '97

WCLA Book Club Representative: Ottavia Montingelli '06

Wellesley Friends of Art Representative: Melissa King '92

Past President: Erika Spitzer '06

Board Observer: Lian Jue '98

Board Observer: Melissa Cheng '05

Board Observer: Natalie Catalan '18

Board Observer: Jean Futami '83

Stay Connected
with Wellesley
College Club of Los
Angeles

Club President
[Lori Dreischmeier](#)
Club Vice President
Brenna Vredevel

Visit Our
[Website](#)

