



Wellesley College Club of Los Angeles



Dear [first_name],

- **UPDATES: A couple of changes in response to new California state guidelines that non-essential gatherings are to be limited to no more than 250 people and smaller events should proceed only if the organizers can implement social distancing of 6 feet per person.**
 - The Young Alum Happy Hour on March 13 is cancelled.
 - The WCLA Book Club on March 15 is cancelled; the book club is communicating directly to its members via email.
- As we all continue to monitor the Coronavirus/COVID-19 developments, the WCLA wants to keep you informed of how we're taking thoughtful and precautionary steps to care for one another. For WCLA events, we suggest gathering with social distancing and mindful of current health recommendations and/or meeting virtually/remotely.
- For the Career Conversation on March 22, we have set up a Zoom conference that we will share with registered guests. For Circles, we sent an email to facilitators with information about guidelines to use a Zoom account provided by WCAA for the option of remote access.
- You can [follow along here](#) to see the latest updates from the College on how they are responding to the rapidly evolving public health crisis of COVID-19.
- We will continue to keep you informed of any changes to our events as we monitor and follow the directives of reputable resources, specifically, the Centers for Disease Control (CDC), the World Health Organization (WHO), and local governmental organizations as well as the College.

We echo President Paula Johnson's thoughts that we will get through this together.

For sure, the ties formed at Wellesley are strong and endure, and we hope you feel the support of our Wellesley alum community.

As always, please reach out with any suggestions or questions by contacting:
WCLosAngeles@alum.wellesley.edu.

Stay well and safe,

Your WCLA Board

Upcoming Events

Events below are listed in chronological order

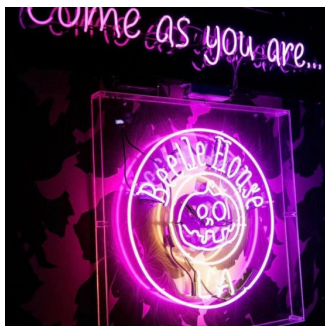
- March 13: Young Alum Happy Hour - CANCELLED
- March 16: WCLA Book Club - CANCELLED
- March 22: Career Conversation with Jane Wolf Frances: Managing Changes in Career, Life Stage, and Aging Parents
- March 26: WIE Spring Break Happy Hour
- April 18: Seven Sisters in Entertainment Speed Networking
- April 19: Accepted students Yield Event in Hancock Park
- April 25: Day to Make a Difference at Ronald McDonald House Los Angeles

STAY CONNECTED

- **Wellesley Club of Los Angeles:** <https://losangeles.alum.wellesley.edu/>
- Reach the **Wellesley Club of Los Angeles:** WCLosAngeles@alum.wellesley.edu
- Wellesley Hive: <https://hive.wellesley.edu/hub/the-hive/home>
- **WCLA on Facebook**
 - **Wellesley Young Alumnae in Los Angeles:** This Facebook page is for all Wellesley Alumnae of Los Angeles/Orange County
<https://www.facebook.com/groups/102080626551375/?t=60722-304008>

****UPCOMING EVENTS****

Young Alum Happy Hour - CANCELLED



In response to COVID-19, the Young Alum Happy Hour on March 13th is cancelled to protect the health and safety of our alums and community.

After much consideration, we will be cancelling our Friday the 13th Happy Hour at Beetle House LA. Late on 3/11/20, the California Department of Public Health issued an advisory stating that small gatherings may occur if organizers can implement and maintain 6 feet of social

distancing. Since we are not able to guarantee that in a bar, we will be postponing this event. Please keep an eye on your inbox for more information moving forward.

We appreciate your understanding and hope to see you all at a future event. We wish you good health and safety during this time.

Your Young Alum Co-Chairs,
Nicole & Rachel

Date: Friday, March 13, 2020

Time: 7:30 PM

Location: Beetle House LA

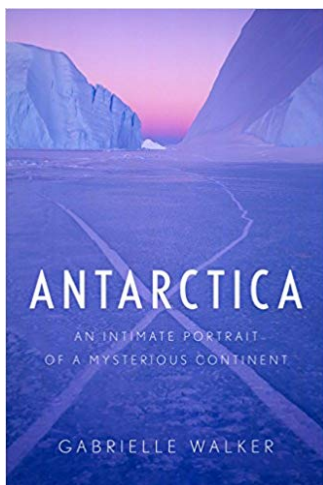
N Las Palmas Ave

Los Angeles, CA 90028

Parking: Carpool strongly encouraged. Venue is walking distance from the Hollywood/Highland Red Line Station (5 minute walk).

RSVP: Email nicole.gebriel@gmail.com

WCLA Book Club - March - CANCELLED



The WCLA Book Club is communicating to their group directly via their distribution list.

For our March meeting we've picked *Antarctica: An Intimate Portrait of the World's Most Mysterious Continent* by Gabrielle Walker. We will be meeting at [Black Dog Coffee](#).

Date: Sunday, March 16, 2020

Time: 1-3pm

Location: [Black Dog Coffee](#)

5657 Wilshire Blvd

Los Angeles, CA 90036

Mid-Wilshire Parking: Either in the LACMA garage (\$12) or street parking around LACMA at meters which on Sundays are typically free.

RSVP: Email [WCLA Book Club](#)

Details: [Here](#)

Career Conversation with Jane Wolf Frances '68: Managing Changes in Career, Life Stage, and Aging Parents

Jane shares her experiences parenting parents, publishing a book, and starting a nonprofit.

Date: Sunday, March 22, 2020

Time: 1:00-3:00 p.m.

Location: Westwood/Wilshire corridor address provided upon RSVP below



Parking: Enter driveway for valet parking by building doormen. If the lot is full, there is unrestricted parking on the side streets: on both sides of Wilshire, Thayer Avenue (directly south of the building), and on Ashton Avenue, from Thayer east to Beverly Glen.

Remote Option: We will provide a Zoom Conference Line for anyone who wants to join remotely.

Pricing: Event is free for members and \$10 for non-members and guests. Advance RSVP is required.

RSVP: Click [here](#) to RSVP

For any questions please contact WCLosAngeles@alum.wellesley.edu

Wellesley in Entertainment Spring Break Happy Hour



Welcome WIE's screenwriting competition award winner, senior Rachael Labes, while she visits LA as part of her awards package. Catch up with fellow alums, hear about life on campus, and toast to the coming spring. All are welcome!

Date: Thursday, March 26, 2020

Time: 7-9pm

Location: Harlowe Bar, 7321 Santa Monica Blvd, West Hollywood, CA 90046

Pricing: Event is free. All are welcome! No RSVP required, though RSVP-ing through the WIE Facebook group will help us make an accurate reservation.

Full event info [here](#).

For any questions please contact WellesleyInEntertainment@gmail.com

Seven Sisters in Entertainment Speed Networking



Hosted by Film Independent. Meet alums from Barnard, Bryn Mawr, Mount Holyoke, Smith, Wellesley, Vassar, and Radcliffe who are working in film, television, and media.

There is a 65-person cap to this event so buy your tickets soon!

Date: Saturday, April 18, 2020

Time: 1-4pm

Location: Film Independent

5670 Wilshire Blvd. 9th Floor

Los Angeles, CA 90036

Parking: FREE in the Film Independent structure

Cost: \$10 Tickets [here](#)

Please note this event is restricted to Seven Sisters alums. One ticket per alum, no guests.

RSVP: Click [here](#) to RSVP

For any questions please contact WellesleyInEntertainment@gmail.com

Welcome Tea for Admitted Students



We are welcoming newly-admitted students and answering any questions they and their parents may have about Wellesley. We'd love to see alums, particularly from more recent classes, who can share on their student experiences, their diverse perspectives on the college, and the benefits of a vast Wellesley alumnae network with these potential future WCLA members!

Date: Sunday, April 19, 2020

Time: 3pm

Location: Home of Linda Myerson Dean '81, Hancock Park address provided upon registration

Parking: Plenty of street parking available

Details and RSVP [here](#).

Day to Make a Difference at Ronald McDonald House Los Angeles



Join us for our spring Day to Make a Difference at Ronald McDonald House LA where we will help prepare brunch. Everyone is asked to bring at least 1 ingredient. Advance RSVP is required in order to coordinate.

Date: Saturday, April 25, 2020

Time: 11am-2pm

Location: 4560 Fountain Avenue, Los Angeles, CA 90029

Parking: Limited street parking available; carpooling is encouraged. Venue is also accessible via the Red Line (10 minute walk from the Vermont/Santa Monica stop).

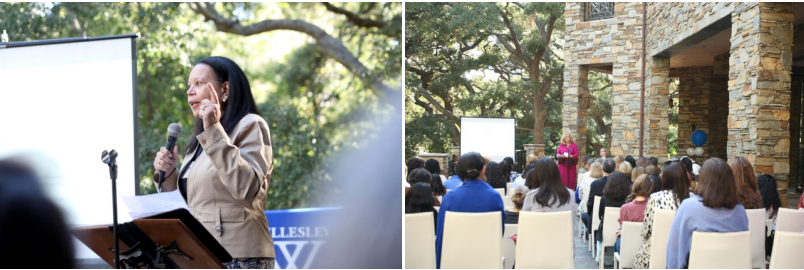
RSVP and Questions: Please contact charlotte.kiang@alum.wellesley.edu

Pricing: No cost to attend but volunteers will be asked to bring at least 1 ingredient to help prepare brunch (estimated cost <\$20)

Photo Album

2020: An Update from Wellesley College

February 29, 2020





See more photos from the event on our website [here](#).

Thanks for joining WAPA at The Abbey!



Please check out our WCLA website to see more photos from these and other events in our [photo albums](#).

Please Support our Club

WCLA Board Volunteers and Event Hosts

If you are interested in serving on the WCLA board or in offering your home as a location for WCLA events, please contact WCLosAngeles@alum.wellesley.edu

Student Admissions

The Los Angeles group had 72 interview requests in this cycle. The WCLA Yield Event for 2024 will be in Hancock Park on April 19. There, Wellesley alumnae meet accepted students and their parents who seek information to help them choose where to enroll. Call Belinda Wilkins Tepper '71 at 213-304-0802 if you have questions.

Book Awards

Book Award season is in full swing, and we'd love to have your support! If you'd like to help us recognize an outstanding junior high school female with a Book Award, please consider donating to our program. We are seeking donations of \$30 which covers the cost of one Award. In addition to financial support, we are also looking for alumnae volunteers to present the Award at high schools in the LA and Orange County areas. For a list of schools requesting presenters, please [click here](#). If you'd like to suggest a school to give an award or are interested in being a presenter, please contact Brianne at bodonogh@wellesley.edu.

Wellesley Banner

A friendly reminder that we have a Wellesley College banner that you can borrow for a special event. Please contact WCLosAngeles@alum.wellesley.edu

WCLA Membership

If you live in the Los Angeles area, please consider becoming a member of WCLA or renewing your membership. Membership provides discounted event tickets, and of course, the chance to support your local Wellesley Club including valuable programs such as lectures with visiting Wellesley professors and faculty, alumnae career panels, recruitment in local high schools and college fairs, and the annual Book Awards.

Lifetime Membership: One-time cost of \$500

Annual Membership Dues:

- Recent Graduate (Class of '19): \$0
- Young Alumna (Classes of '15-'18): \$25
- Regular Membership: \$50

Dues can be paid [online](#). Please be sure to log in to the WCLA site first.

If you'd prefer to pay by check, please contact WCLA Co-Treasurers, Brenna Vredeveld (bvredeveld@gmail.com) and Henrietta Wong (henrietta.w.wong@gmail.com) for instructions.

Get Involved - Shared Identity Groups (SIGs)

Wellesley in Entertainment (WIE)

If you are working or want to work in film, TV, media, communications, or the arts, join the Wellesley In Entertainment group and attend informational panels, networking events, and screenings of alum work. Contact [Kate Erickson '05](#).

Wellesley Latina Network (WLAN)

To get involved with WLAN and support Latina and Hispanic Admission/Recruitment, College Connection, and Alumnae Community at Wellesley College and in the Alumnae Network, please contact WCLosAngeles@alum.wellesley.edu

Wellesley Alumnae of African Descent (WAAD)

To get involved with WAAD, please contact [Jackie Olivier '82](#).

Wellesley Alum Pride Alliance (WAPA)

To get involved with WAPA, contact Malique Carr '05 at WCLA.WAPA@gmail.com.

Wellesley Jewish Alumnae (WJA)

For more information, please email wjaprogramming@alum.wellesley.edu or WJAPresident@alum.wellesley.edu.

Wellesley Friends of Art

To get involved or learn more, please contact [Friends of Art](#).

Wellesley Entrepreneurs' Group

If you are an entrepreneur, or interested in becoming one, and would like to join a monthly meeting of the Wellesley Entrepreneurs group for Southern California, please contact [Stephanie Sunwoo '97](#) or [Karen Jordan '91](#). Facebook: [Wellesley Entrepreneurs of Los Angeles](#)

Career Conversations

Stuck in a rut? Try something new! New Job! New life challenge! Our small group from the '80's classes have grown from gathering every two months at a wine bar in Beverly Hills for a "Career Transitions Group" to getting together for "Career Conversations" led by alums in various careers. If you'd like to recommend a speaker, please email WCLosAngeles@alum.wellesley.edu.

The Plato Society of Los Angeles

Wellesley grads Nancy Bott '64 and Sue Allen '47 have been members of the PLATO Society of Los Angeles for many years and invite you to join them at the peer-led study discussion groups in Westwood Village. To learn more, check out www.platola.org or contact Nancy at nancybott@verizon.net.

Please click [here](#) to see our WCLA Board leadership.