

Dear [first\_name],

You're invited to check out a special event with Friends of Art and Young Alums: A Welcome to Los Angeles Art Crawl this SATURDAY, AUGUST 4! This is a 2-hour guided tour through the Arts District! Don't miss it! To register, click [here](#).

You're also invited to send off the Class of 2022 on Sunday, August 19 at Kyle Robertson Neal's home in West Hollywood. There are 19 students from Los Angeles, 17 from Pasadena, and 7 from Orange County starting at Wellesley in the fall.

**Looking ahead to our signature holiday party, we'd love you to let us know what you want! We are taking a quick poll to see if you prefer Saturday night cocktails or Sunday afternoon tea. Please click [here](#)!**

Our board is still looking for a **Membership Chair** and a **Website Manager (Database)**; you can learn more about the open positions [here](#). If interested, please email [WCLosAngeles@alum.wellesley.edu](mailto:WCLosAngeles@alum.wellesley.edu).

We hope to see you at a WCLA event soon!

Best wishes,

Your WCLA Board

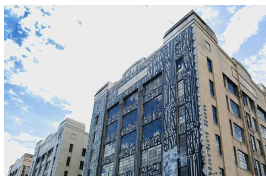
---

## Upcoming Events

*Events below are listed in chronological order*

### "Welcome to LA" Art Crawl

Friends of Art and the Young Alums of Los Angeles invite you to a fantastic morning exploring the artistic side of Los Angeles. The 2-hour guided tour will lead you through the Arts District highlighting the history and artistry behind the graffiti and



murals. No-host lunch after the tour at [KTCHN-FOOD/Resident DTLA](#).

Date: Saturday, August 4th, 2018

Time: 10:30am-12:30pm (tour only)

Location: Tour starts in front of the DVHQ Art Botique in the Downtown LA Arts District 533 Colyton, Los Angeles, CA 90013 at 10:30. If their lot is open (typically 11 AM to 7 PM unless they are using it for a special event) feel free to park inside. There is also free street parking in the area. Your guide will be waiting out front of Dejavita for you.

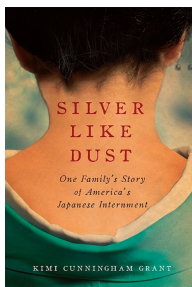
Price: \$10 member (WCLA, Wellesley-in-Pasadena, or Friends of Art) \$15 non-member

Event details: Click [here](#)

REGISTER: Click [here](#)

Questions? Contact [Rachel Thommen](#)

### WCLA Book Club - August



The WCLA Book Club is open to all Wellesley alumnae and includes a wide range of ages. The Club meets one Sunday a month. We read a wide variety of genres and try to keep a good mix of fiction and nonfiction. Books and dates for each month are picked at the preceding month's meeting. Anyone is welcome to join!

**Book for August: "Silver Like Dust" by Kimi Cunningham Grant**

Date: Sunday, August 5th, 2018

Time: 1-3pm

Location: Central Court at LACMA between the LACMA Cafe and the bookstore [5905 Wilshire Blvd, Los Angeles, CA 90036](#)

Event and parking details: Click [here](#)

### Summer Send-Off for Class of 2022



Summer Garden Party for first-years, parents and alumnae!

Date: Sunday, August 19th, 2018

Time: 2:30-4:30pm

Location: Home of Kyle Neal '83 in West Hollywood

(address provided upon RSVP)

Event details: Click [here](#)

### Friends of Art Talk & Tour with Carol Bishop

A talk and tour of her work by artist Carol Bishop at her Beachwood Canyon home with a reception at the nearby home of Hope Anderson '81, a collector of Carol's work.

Date: Saturday, September 1st, 2018

Time: 2-5:30pm

Location: [1933 Carmen Avenue, Los Angeles, CA 90068](#) (Bishop residence)



Reception to follow: [2800 N Beachwood Drive, Los Angeles, CA 90068](#)

Accessibility: Carol's house has 5 steps from the street to the front door. Hope's house has 25 steps from the street to the front door.

Event details: Click [here](#)

Questions: Contact LA Friends of Art at [FOALA@wellesley.edu](mailto:FOALA@wellesley.edu)

### Young Alums Monthly Lunch - September



Make new friends in LA: Alumnae classes '13-'18 or young at heart! Let's lunch together like the days when we ate together in the dorms, but now we're outside in the California sunshine!

Date: Sunday, September 8th, 2018 (recurring on the first Saturday of every month)

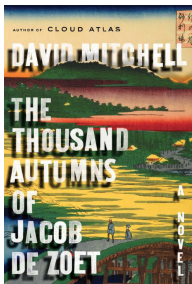
Time: 1:30-2:30pm

Location: Sweetgreen Century City 10250 North Santa Monica Blvd, Los Angeles, CA 90067 on the first floor next to the Video and Audio Center. Look for the Green Wellesley baseball cap!

Event details: Click [here](#)

Please contact [Rachel Thommen](#) if you have interest/questions.

### WCLA Book Club - September



Book for September: "The Thousand Autumns of Jacob Zoet" by David Mitchell

Date: Sunday, September 9th, 2018

Time: 1-3pm

Location: Central Court at LACMA between the LACMA Cafe and the bookstore 5905 Wilshire Blvd, Los Angeles, CA 90036

Event details: Click [here](#)

## Photo Album

Please check out our WCLA website to see [photo albums](#).

## Get Involved

Join **The Hive** networking platform: <https://hive.wellesley.edu>

**Wellesley in Entertainment (WIE)**

If you are working or want to work in film, TV, media, communications, or the arts, join the Wellesley In Entertainment group and attend informational panels, networking events, and screenings of alum work. Contact [Kate Erickson '05](#).

**Wellesley Latina Network (WLAN)**

To get involved with WLAN and support Latina and Hispanic Admission/Recruitment, College Connection and Alumnae Community at Wellesley and in the Alumnae Network, please contact [Kathy Silva '16](#).

**Wellesley Alumnae of African Descent (WAAD)**

To get involved with WAAD, please contact [Jackie Olivier '82](#).

**Wellesley Alum Pride Alliance (WAPA)**

To get involved with WAPA, please contact [WCLA.WAPA@gmail.com](mailto:WCLA.WAPA@gmail.com).

**Wellesley Friends of Art**

To get involved or learn more, please contact [Friends of Art](#).

**Wellesley Entrepreneurs' Group**

If you are an entrepreneur, or interested in becoming one, and would like to join a monthly meeting of the Wellesley Entrepreneurs group for Southern California, please contact [Stephanie Sunwoo '97](#) or [Karen Jordan '91](#).

**WCLA Career and Life Transitions Group**

Stuck in a rut? Try something new! New Job! New life challenge! A small group from the '80's classes have been gathering every two months at a Beverly Hills wine bar to catch up and share ideas about new directions--planned and unplanned. If you are interested in joining, please contact [Julie Hogenboom '87](#).

---

## Please Support our Club

**Student Admissions - Represent Wellesley at Career College Fairs and/or participate in prospective student interviews.**

To learn more, click [here](#).

Please contact [admission@wellesley.edu](mailto:admission@wellesley.edu) to volunteer.

**Wellesley Book Award Program**

In 2018, we honored seven (7) young women--students who have been top scholars as well as talented performers in extracurricular areas--with a Wellesley College Alumnae Association Book Award. The Book Award Program recognizes high-achieving young women who have excelled and gives them the opportunity to become better acquainted with Wellesley. It also helps some areas of the country such as California become more familiar with Wellesley. Please learn more about the book award [here](#).

Many thanks to our alums who have donated a Book Award Sponsorship!

If you are interested in donating a book award, please contact [WCLosAngeles@alum.wellesley.edu](mailto:WCLosAngeles@alum.wellesley.edu). It is a \$30 donation to sponsor each book award.

## WCLA Board Volunteers and Event Hosts

If you are interested in serving on the WCLA board or in offering your home as a location for WCLA events, please contact [WCLosAngeles@alum.wellesley.edu](mailto:WCLosAngeles@alum.wellesley.edu). Click [here](#) for more information on board positions.

## WCLA Membership

If you live in the Los Angeles area, please consider becoming a member of WCLA or renewing your membership. Membership provides discounted event tickets, and of course, the chance to support your local Wellesley Club including valuable programs such as lectures with visiting Wellesley professors and faculty, alumnae career panels, recruitment in local high schools and college fairs, and the annual Book Awards.

Lifetime Membership: One-time cost of \$500

Annual Membership Dues:

- Recent Graduate (Class of '17): \$0
- Young Alumna (Classes of '13-'16): \$25
- Regular Membership: \$50

Annual memberships are valid for one year from the date of purchase. Recent Graduate and Young Alumna membership levels are updated at the end of each academic year. Dues can be paid [online](#). Please be sure to log in to the WCLA site first.

If there are issues with logging into the system, you can first try the reset app which can be found [here](#). If you need further technical help with your login, please use [this form](#).

You can also mail a check to Brenna Vredevelde, one of WCLA's Co-Treasurers. Contact her at [bvredevelde@gmail.com](mailto:bvredeveld@gmail.com). Please make checks payable to Wellesley Club of Los Angeles, include your graduation year and specify as "membership dues".

---

## Connecting

### WCLA on Facebook

Stay up to date on events, share information with fellow alums and join our Facebook Community here: <https://www.facebook.com/groups/WellesleyClubLosAngeles>

Help for joining the WCLA Facebook Group:

- 1) First join the master Wellesley College Facebook group:

<https://www.facebook.com/groups/groupsatwellesley/>

If you are unable to join because it asks for a Wellesley email address, contact the Wellesley Help Desk to reset your password [helpdesk@wellesley.edu](mailto:helpdesk@wellesley.edu) or 781-283-3333.

- 2) Request to join the Wellesley in LA group at this link:

<https://www.facebook.com/groups/WellesleyClubLosAngeles/>

**Wellesley Hive:** <https://hive.wellesley.edu/hub/the-hive/home>

**Wellesley Club of Los Angeles:** <https://losangeles.alum.wellesley.edu/>

**Wellesley Young Alumnae in Los Angeles:** [Wellesley Young Alumnae in Los Angeles](#)

---

## WCLA Board

President: Lori Dreischmeier

Vice President: Erin Copenbarger

Co-Treasurer and Website Manager: Brenna Vredevelt

Co-Treasurer: Henrietta Wong

Secretary: Alexandra Hatem

Alumnae Admission Representative (AAR), LA: Mei Ling Messner

Alumnae Admission Representative (AAR), OC: Rachel Newman

Book Award Chair: Alexandra Nagourney

Young Alumnae Representative: Rachel Thommen

Website Events & News: Lian Jue

Social Media: Mai Perches

Newsletter Editor: Beth Schaaf

Photographer and Photo Curator: Jda Gayle

Programming Chair & Faculty Speaker Chair: Ilene Tsui

Day to Make a Difference/Community Service Chair: Charlotte Kiang

Wellesley in Entertainment (WIE) Representative: Michelle Lirtzman

WLAN Representative: Kathy Silva

WAAD Representative: Jackie Olivier

WAPA Representative: Malique Carr

WCLA Book Club Representative: Ottavia Montingelli

Friends of Art Representative: Melissa King

Wellesley Entrepreneurs Representative: Stephanie Sunwoo

Past President: Erika Spitzer

Stay Connected  
with Wellesley  
College Club of Los  
Angeles

Club President  
[Lori Dreischmeier](#)  
'86

Visit Our  
[Website](#)

