



Dear [first_name],

The very special Sed Ministrare event is almost here, and there are a couple of spots still open! Please click [here](#) to register.

This event is on Saturday, November 3 from 3:00-5:15pm at the Pacific Palisades home of Trustee Lawry Meister '83 who is generously hosting the celebration: WCLA Past President (of 4 years) Erikza Spitzer '06 is receiving the Alumnae Association's prestigious 2018 Sed Ministrare Volunteer Award honoring outstanding service to Wellesley College. [Missy Siner Shea '89](#), Executive Director of the Wellesley College Alumnae Association will present the award. Plus, [Ann Velenchik](#), Dean of Academic Affairs and Associate Professor of Economics, is making a special visit to our club to provide exciting campus updates including the Science Center renovation.

This same weekend, **Friends of Art** invite our alumnae community to an unguided group tour of Ai Wei Wei's "Life Cycle" on Sunday, November 4 at the Marciano Art Foundation. Please click [here](#) for more details and to RSVP.

Also, reminder to register for our **annual Holiday WCLA Holiday Party on Saturday, December 8!** Please click [here](#) to register.

On another note, our Alumnae Admissions Reps need **volunteers to interview applying students**. It's a fun way to be of service! Registering is easy and interviews can be conducted over Skype or locally. Register [here](#). For more information, contact [Mei Ling E. Messner '17](#) (AAR, LA) or [Rachel Newman '08](#) (AAR, OC).

If you have any suggestions or questions for our club, please contact

WCLosAngeles@alum.wellesley.edu.

We hope to see you at a WCLA event soon!

Best wishes,

Your WCLA Board

Upcoming Events

Events below are listed in chronological order

Sed Ministrare Award Celebration

Join the WCLA to celebrate with WCLA Past President (of 4 years) Erika Spitzer '06 as she receives the Alumnae Association's Sed Ministrare Volunteer Award honoring outstanding service to Wellesley College.



The award will be presented by Missy Siner Shea '89, Executive Director, Wellesley College Alumnae Association. Plus meet special guest speaker Ann Velenchik, Associate Professor of Economics and Dean of Academic Affairs at Wellesley College.

Date: Saturday, November 3, 2018

Time: 3:00-5:15pm

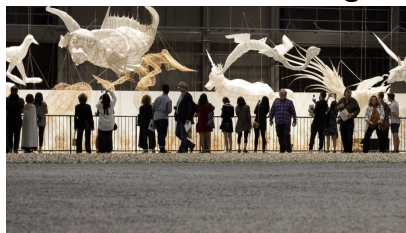
Location: Home of Trustee Lawry Meister '83 Pacific Palisades, CA; Address provided upon RSVP.

Parking: Street parking available

Register: Please RSVP by clicking the event page link [here](#). Event is free for members and \$15 for non-members/guests. Capacity is limited.

Please contact WCLosAngeles@alum.wellesley.edu if you have interest/questions.

Friends of Art: Unguided group tour of Ai Wei Wei's "Life Cycle"



Join Friends of Art in viewing the first major Los Angeles show of Ai Weiwei, the celebrated Berlin-based Chinese sculptor and conceptual artist. His show "Life Cycle" marks the premiere of its namesake work, a nearly 60-foot inflatable raft made entirely from bamboo inspired by the European refugee crisis.

His exhibition lures you in with its awesome scale and impresses with its beautifully delicate construction.

Date: Sunday, November 4, 2018

Time: 11am- ~1pm. Please arrive no later than 10:45. Our group MUST enter together at 11am and late arrivals will not be accommodated

Location: Marciano Art Foundation, 4357 Wilshire Blvd, Los Angeles

Cost: \$15/person to cover the cost of the visit, for which we are getting a group rate

RSVP: Please sign up for this event via Eventbrite by clicking [here](#).

Eventbrite Password: FOALA.

Limited to 25 people MAX.

Questions: Please contact LA Friends of Art at FOALA@wellesley.edu

WCLA / WAPA Night at the Theatre



Come join the Wellesley Alum Pride Alliance (WAPA) and see the world premiere of *Cleo, Theo & Wu*, written by Human Rights Campaign Visibility Award winner and *Criminal Minds*' star, Kirsten Vangsness, and directed by Lisa Dring. There will reportedly be a Q&A after the event. Please be advised that the play contains adult language and themes. The play description and details can be found [here](#). Purchase tickets ASAP [here](#), and send me an email to let me know that you are coming!

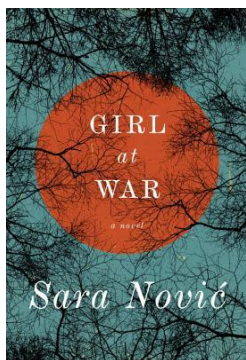
Date: Sunday, November 11th, 2018

Time: 7:00pm

Location: Theatre of Note, 1517 N Cahuenga Blvd, Los Angeles, CA 90028

Questions?: Contact WAPA rep Malique Carr '05 [here](#).

WCLA Book Club - November



Book for November: "Girl at War" by Sara Novic

Date: Sunday, November 11th, 2018

Time: 1-3pm

Location: Central Court at LACMA, between the LACMA Cafe and the bookstore, 5905 Wilshire Blvd, Los Angeles, CA 90036

Event and contact details: click [here](#)

Wellesley-in-Pasadena: Annual Holiday Cookie Exchange



Save the date!

Date: Sunday, December 2, 2018

Time: 2:00-5:00pm TBC

Location: Pasadena location TBD

Event page: click [here](#)

More details to come. Please contact

WCPasadena@alum.wellesley.edu if you have questions.

Wellesley at the Wellesbourne - Annual Holiday Party

Date: Saturday, December 8, 2018

Time: 5:30-7:30pm

Location: The Wellesbourne 10929 West Pico Boulevard, Los Angeles, CA 90064

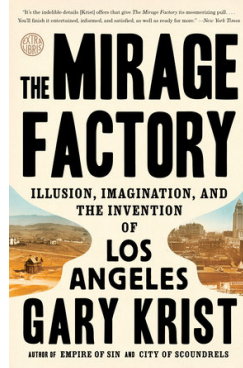
Parking: First 3 hours across the street at the Landmark Movie Theatre or public metered parking at the corner of Pico and Midvale Avenue.



Attire: Holiday!

Register: Get tickets at the event page [here](#)! Please contact WCLosAngeles@alum.wellesley.edu if you have any questions.

WCLA Book Club - December



Book for December: "The Mirage Factory" by Gary Krist

Date: Sunday, December 9th, 2018

Time: 1-3pm

Location: Central Court at LACMA, between the LACMA Cafe and the bookstore, 5905 Wilshire Blvd, Los Angeles, CA 90036

Event and contact details: click [here](#)

WCLA Career and Life Transitions Group - January



Stuck in a rut? Try something new! New job! New life challenge!

Date: Sunday, January 27th, 2019

Time: 4:30-6:00pm

Location: 350 North Canon Drive Beverly Hills, CA 90210

Event and contact details: click [here](#)

Note: The November 11 event has been moved to January 27.

Questions? Contact [Julie Hogenboom](#)

Wellesley-in-Pasadena: Faculty Speaker - Sara Wasserman Save-the-Date



Date: March 3, 2019

Time: TBD

Location: Pasadena location TBD

Register: Please get tickets at the event page [here](#).

Please contact WCLosAngeles@alum.wellesley.edu if you have questions

Photo Album

The WAPA urban hike through Hollywoodland was a blast! Thanks for

coming out!



Please check out our WCLA website to see more photos from these and other events in our [photo albums](#).

Get Involved

Join **The Hive** networking platform: <https://hive.wellesley.edu>

Wellesley in Entertainment (WIE)

If you are working or want to work in film, TV, media, communications, or the arts, join the Wellesley In Entertainment group and attend informational panels, networking events, and screenings of alum work. Contact [Kate Erickson '05](#).

Wellesley Latina Network (WLAN)

To get involved with WLAN and support Latina and Hispanic Admission/Recruitment, College Connection and Alumnae Community at Wellesley and in the Alumnae Network, please contact [Kathy Silva '16](#).

Wellesley Alumnae of African Descent (WAAD)

To get involved with WAAD, please contact [Jackie Olivier '82](#).

Wellesley Alum Pride Alliance (WAPA)

To get involved with WAPA, contact Malique Carr '05 at WCLA.WAPA@gmail.com.

Wellesley Friends of Art

To get involved or learn more, please contact [Friends of Art](#).

Wellesley Entrepreneurs' Group

If you are an entrepreneur, or interested in becoming one, and would like to join a monthly meeting of the Wellesley Entrepreneurs group for Southern California, please contact [Stephanie Sunwoo '97](#) or [Karen Jordan '91](#). Facebook: [Wellesley Entrepreneurs of Los Angeles](#)

WCLA Career and Life Transitions Group

Stuck in a rut? Try something new! New Job! New life challenge! A small group from the '80's classes have been gathering every two months at a Beverly Hills wine bar to catch up and share ideas about new directions--planned and unplanned. Many of us want or need to try something new, and we're figuring it out together! If you are interested in joining, please contact [Julie Hogenboom '87](#).

Please Support our Club

Student Admissions - Represent Wellesley at Career College Fairs and/or participate in prospective student interviews.

To learn more, click [here](#).

Please contact admission@wellesley.edu to volunteer.

Wellesley Book Award Program

The WCLA actively participates in the [Wellesley College Book Award program](#) honoring promising student in Los Angeles and Orange counties. The program recognizes students--many of whom may not have otherwise known about Wellesley--for their academic leadership and personal contributions to their schools and communities. In the 2017-2018 academic year, we honored seven (7) high school juniors chosen for their intelligence, determination, motivation, and achievement.

We are always interested in growing our program! There are two ways for alumnae to get involved. First, you can sponsor a book for the 2018-19 academic year. The book is Norton Book of Women's Lives; it costs \$30 to sponsor one book and you can donate [online here](#) or email WCLosAngeles@alum.wellesley.edu. Second, if you know of a Los Angeles or Orange County high school that would benefit from participating, please send a note to WCLosAngeles@alum.wellesley.edu.

WCLA Board Volunteers and Event Hosts

If you are interested in serving on the WCLA board or in offering your home as a location for WCLA events, please contact WCLosAngeles@alum.wellesley.edu. Click [here](#) for more information on board positions.

WCLA Membership

If you live in the Los Angeles area, please consider becoming a member of WCLA or renewing your membership. Membership provides discounted event tickets, and of

course, the chance to support your local Wellesley Club including valuable programs such as lectures with visiting Wellesley professors and faculty, alumnae career panels, recruitment in local high schools and college fairs, and the annual Book Awards.

Lifetime Membership: One-time cost of \$500

Annual Membership Dues:

- Recent Graduate (Class of '17): \$0
- Young Alumna (Classes of '13-'16): \$25
- Regular Membership: \$50

Annual memberships are valid for one year from the date of purchase. Recent Graduate and Young Alumna membership levels are updated at the end of each academic year. Dues can be paid [online](#). Please be sure to log in to the WCLA site first.

If there are issues with logging into the system, you can first try the reset app which can be found [here](#). If you need further technical help with your login, please use [this form](#).

You can also mail a check to Brenna Vredevelde, one of WCLA's Co-Treasurers. Contact her at [bvredevelde@gmail.com](mailto:bvredeveld@gmail.com). Please make checks payable to Wellesley Club of Los Angeles, include your graduation year and specify as "membership dues".

Connecting

WCLA on Facebook

Stay up to date on events, share information with fellow alums and join our Facebook Community here: <https://www.facebook.com/groups/WellesleyClubLosAngeles>

Help for joining the WCLA Facebook Group:

1) First join the master Wellesley College Facebook group:

<https://www.facebook.com/groups/groupsatwellesley/>

If you are unable to join because it asks for a Wellesley email address, contact the Wellesley Help Desk to reset your password helpdesk@wellesley.edu or 781-283-3333.

2) Request to join the Wellesley in LA group at this link:

<https://www.facebook.com/groups/WellesleyClubLosAngeles/>

Wellesley Hive: <https://hive.wellesley.edu/hub/the-hive/home>

Wellesley Club of Los Angeles: <https://losangeles.alum.wellesley.edu/>

Wellesley Young Alumnae in Los Angeles: [Wellesley Young Alumnae in Los Angeles](#)

WCLA Board

President: Lori Dreischmeier

Vice President: Erin Copenbarger

VP, Operations/Website and Co-Treasurer: Brenna Vredevelde

Co-Treasurer: Henrietta Wong

Secretary: Alexandra Hatem

Alumnae Admission Representative (AAR), LA: Mei Ling Messner

Alumnae Admission Representative (AAR), OC: Rachel Newman

Book Award Chair: Alexandra Nagourney

Young Alumnae Representative: Rachel Thommen

Social Media: Mai Perches

Newsletter Editor and Website Events: Beth Schaaf

Photographer and Website News: Jda Gayle

Programming Chair & Faculty Speaker Chair: Ilene Tsui

Day to Make a Difference/Community Service Chair: Charlotte Kiang

Membership Chair: Natalie Catalan

Wellesley in Entertainment (WIE) Representative: Kate Erickson

WLAN Representative: Kathy Silva

WAAD Representative: Jackie Olivier

WAPA Representative: Malique Carr

WCLA Book Club Representative: Ottavia Montingelli

Wellesley Friends of Art Representative: Melissa King

Wellesley Entrepreneurs Representative: Stephanie Sunwoo

Past President: Erika Spitzer

Stay Connected
with Wellesley
College Club of Los
Angeles

Club President
[Lori Dreischmeier](#)
'86

Visit Our
[Website](#)

