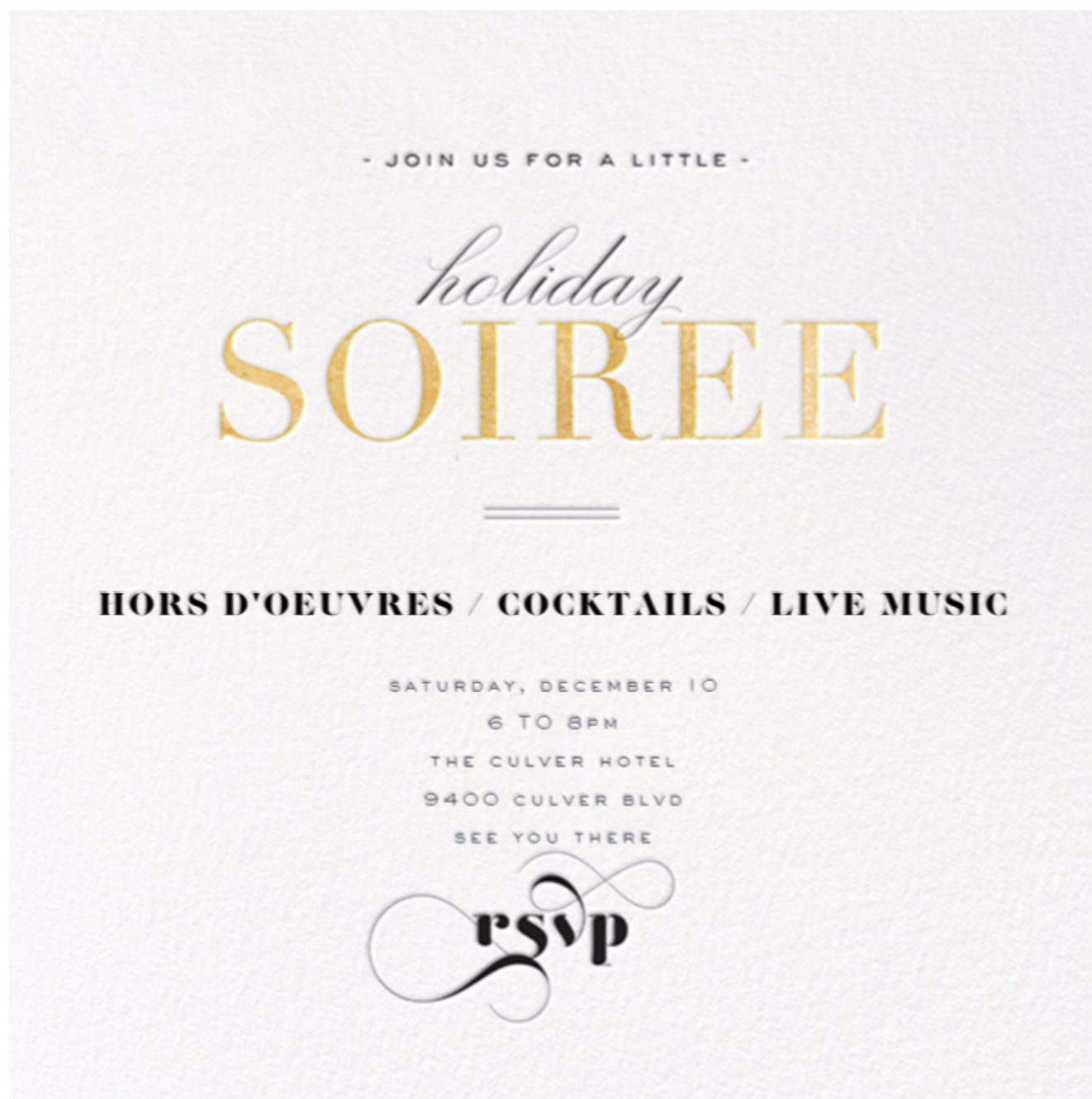


Dear [first_name],

Please join the Wellesley Club of Los Angeles for our annual holiday party this Saturday evening, December 10th from 6:00 to 8:00 pm at The Culver Hotel. Come celebrate the season with your fellow alums!

Kindly [RSVP](#) ASAP if you have not already and would like to attend. Registration will close at the end of the day today. We look forward to seeing you there!



Pricing:

Club members: \$10

Young Alums ('12 - '16): \$5

Non-Members/Guests: \$20

Lifetime members: free

For questions regarding your Wellesley login or other technical difficulties, please contact Robin Marshall: rmarshal@wellesley.edu

Join the WCLA or renew your membership today! <https://losangeles.alum.wellesley.edu/memsub.html>. Membership status questions can be directed to kathleenscott99@gmail.com.

Every woman can—and should—make a meaningful contribution to her world. There is a growing recognition that women's empowerment and leadership are crucial to their own advancement, and to worldwide societal change. Wellesley and its alumnae have supported and championed women's intellectual and social development and autonomy for over 100 years.

Stay Connected
with Wellesley College Club of
Los Angeles

Club President
Erika Spitzer

Visit Our
[Website](#)

