



RFP# 20 - 003

STAFFORD MUNICIPAL SCHOOL DISTRICT
REQUEST FOR COMPETITIVE SEALED PROPOSALS FOR
HIGH SCHOOL & STEM MAGNET SCHOOL RENOVATION

ADDENDUM 2

3/31/2020

Please note that there are Modifications to the Bidding Procedures

A. Use of Electronic Bidding Procedures

While Stafford Municipal School District will be receiving bids using those methods stated in the RFP, Stafford Municipal School District will also allow, and encourage, electronic bid submissions for this project in lieu of in-person/mailed submissions. You must choose one method or the other, not both, to submit your bid. Bidders must ensure that all required content for each Part of the submission is fully uploaded to the Bid/Plan Room (Proposal forms, Microsoft Excel file). While a complete, comprehensive, all-inclusive single file is preferred, Bidders will be allowed to pre-load completed portions of their proposal into the Bids/Plan Room, save and return later to submit the proposal form to eliminate issues with last-minute file uploads. The system shall not allow for any late bids or proposals after the closing date and time. The District will not be responsible for any delay of delivery or submission, including delays related to system programs, servers, or acts of nature. Bids or proposals sent in response to all formal solicitations shall be electronically sealed in an electronic lockbox and not accessible to any internal and external user other than the vendor initiating the bid or proposal

Please log into the Bids/Plan Room using the following link:

<https://lan.projectmates.com/projectmates/bid/BidLogin.aspx>

If you are new to Projectmates you will be asked to create a username and password plus other basic registration information. Once you have logged in, please select "Add to My Bids" to view information about the project, obtain solicitation documents and submit your bid.

Once you are a registered user, you may access a User Guide for Electronic Submissions at the following link:

<https://university.projectmates.com//PMHelp/Bids/default.htm?qs=96640139036C52B95806FAA673FDD398A9ED7BE2EFE25C2137C12679CA9678FDDA2FDA0BB1FDDF5405304A4436D42F3A>

B. Opening and Reading of Proposals

Owner or designee will utilize a virtual meeting to reveal the names of the respondents and the monetary offer stated in Part 1 and the Alternates and unit prices Part 2. To attend the virtual meeting please use the link below to join by video conference or the telephone number and meeting number to join via audio only. To allow meeting organizers the necessary time to receive, organize, and prepare for the virtual meeting, the virtual meeting will begin at **4:30 P.M.** CST.

Meeting video conference link:

Join Zoom Meeting

<https://zoom.us/j/673954936>

Meeting ID: 673 954 936

Meeting audio only:

Dial: +1 346 248 7799

Meeting ID: 673 954 936

Revisions included in this Addendum:

Please refer to drawings and specifications for more information. These specifications and drawings supersede any previously issued versions of the same spec or drawings. Please replace and refer to the most current drawings in your set. Please refer to specifications for more information.

Drawings Sheets Issued:

- A0.00 – Project Information – REPLACE (Sheet Index has been updated)
- M0.01 – Symbols, Notes and Legends – ADD (New Sheet)
- M0.02 – Schedules – ADD (New Sheet)
- M2.01 – Details – ADD (New Sheet)

Included in this Addendum is the Sign-In Sheet for the Pre-Proposal Conference held on March 26, 2020.

END OF ADDENDUM #2



Date: 26 March 2020
Stafford Municipal School District
RFP#20 - 003: Request for Competitive Sealed Proposals
for The Renovation of High School & STEM Magnet School
Topic: Pre – Proposal Conference



PLANNING
ENGINEERING
PROGRAM MANAGEMENT

Sign-in Sheet

Name – printed (legibly)	Company/Organization	Phone	Email
Jay Durrett	Bass Construction	(281) 762-6403	jay.durrett@bassconstruction.com
Brad Hooper	Jamil & Smith Construction	(281) 901-5896	bhooper@jamailsmith.com
Josh Moran	The Gonzalez Group	(832) 242-2300	jm@the-gonzalezgroup.com
Kournie Simpson	TEAL Construction Company	(713) 465-8306	kourniesimpson@tealcon.com
James Hogan	Bartlett Cocke General Contractors	(713) 996-9510	jhogan@bartlettcocke.com
Victor Fleming	LAN	(713) 853-6627	vcfleming@lan-inc.com
Michael Scott	LAN	(773) 617-7639	mjscott@lan-inc.com
Farrah Sabouni	AUTOARCH Architects, LLC	(713) 952-3366	farrah@autoarch.net
Lina Sabouni	AUTOARCH Architects, LLC	(713) 952-3366	lina@autoarch.net
Michael Sabouni	AUTOARCH Architects, LLC	(713) 952-3366	michael@autoarch.net

THIS SET OF CONTRACT DOCUMENTS INCLUDES BOTH TECHNICAL SPECIFICATIONS AND DRAWINGS. THE INSTALLATION APPLICATION INFORMATION HEREIN IS NOT TO BE CONSIDERED COMPLETE UNLESS ALL OF THE SHEETS LISTED IN THE INDEX ARE PRESENT.

ALL CONTRACTORS AND BIDDERS MUST READ THE ENTIRETY OF THE WRITTEN SPECIFICATIONS AND DRAWINGS CONTAINED IN THE CONTRACT DOCUMENTS. THE DRAWINGS INDICATE THE OVERALL DESIGN INTENT, AS WELL AS DIMENSION AND QUANTITY OF BUILDING MATERIALS, PRODUCTS, AND COMPONENTS TO BE PLACED OR INSTALLED.

THE SPECIFICATIONS CONTAIN BIDDING AND PROCEDURAL INFORMATION, AS WELL AS QUALITY, PREPARATION AND INSTALLATION REQUIREMENTS FOR BUILDING MATERIALS, PRODUCTS OR COMPONENTS THAT ARE BEING PLACED OR INSTALLED.

ONLY THE MOST CURRENT SIGNED AND SEALED DRAWINGS AND SPECIFICATIONS SHALL BE USED FOR BIDDING, PERMITTING, AND CONSTRUCTION PURPOSES.

THESE CONTRACT DOCUMENTS ARE THE INSTRUMENT OF SERVICES RENDERED, AND SHALL REMAIN THE PROPERTY OF THE ARCHITECT. ANY USE OF THESE CONSTRUCTION DOCUMENTS FOR PURPOSES OTHER THAN THE EXECUTION OF THIS PROJECT, WITHOUT THE ARCHITECT'S CONSENT, IS PROHIBITED.

THESE CONSTRUCTION DOCUMENTS ARE THE DIAGNOSTIC EXPRESSION OF THE ARCHITECT'S DESIGN INTENTIONS. CONTRACTORS SHALL NEVER SCALE THE DOCUMENTS FOR MEASUREMENTS.

ARCHITECT IS RESPONSIBLE ONLY FOR THOSE UNDERGROUND UTILITIES AND THE- IN LOCATIONS THAT APPEAR ACCURATELY ON THE COUNTY'S RECORD DRAWINGS. ANY DEVIATION FROM THESE RECORDS SHALL BE INDEPENDENTLY VERIFIED AND LOCATED BY THE GENERAL CONTRACTOR.

CONTRACTOR SHALL FIELD VERIFY ALL CONDITIONS AND DIMENSIONS, WITH SPECIAL ATTENTION GIVEN TO BUILDING LOCATION, GRID LINE, AND STRUCTURAL DIMENSIONS.

CONTRACTOR SHALL NOTIFY THE ARCHITECT OF ANY DISCREPANCIES BETWEEN DRAWINGS, SPECIFICATIONS, AND SITE CONDITIONS IMMEDIATELY UPON THEIR DISCOVERY.

DEVIATIONS FROM THE DRAWINGS AND SPECIFICATIONS ARE PROHIBITED WITHOUT EXPRESS WRITTEN APPROVAL OF THE ARCHITECT.

ALL CONTRACTORS SHALL COORDINATE THEIR WORK WITH THAT OF OTHER CONTRACTORS WORKING ON SITE, AND SHALL COMPORT THEMSELVES IN A PROFESSIONAL MANNER. CONCERNS SHALL BE BROUGHT TO THE GENERAL CONTRACTOR. THE GENERAL CONTRACTOR SHALL BE RESPONSIBLE FOR THE COORDINATION OF SUBCONTRACTORS' WORK, IN ACCORDANCE WITH THESE CONTRACT DOCUMENTS.

ALL WORK REQUIRED TO COMPLETE THE PROJECT, INCLUDING WORK NOT SPECIFIED IN THESE DOCUMENTS BUT NECESSARY FOR THE PROJECT'S COMPLETION, SHALL MEET GENERAL PROFESSIONAL STANDARDS, APPLICABLE CODES AND REGULATIONS, AND MANUFACTURERS' RECOMMENDATIONS.

ALL CONTROLS SHALL BE MOUNTED AT 42" ABOVE FINISHED FLOOR, UNLESS INDICATED OTHERWISE.

29 GENERAL NOTES SCALE: NOT TO SCALE

Table with 2 columns: PLAN / SECTION and Material/Condition. Includes entries for Earth, Brick, CMU Block, Metal, Dim. Wood, Plywood, etc.

Table of Abbreviations: A.F.F., ALUM., BLDG., C., C.F.M., C.F.M., C.M.U., COL., CONG., CONT., C.Y.L., D., DOCS., EA., E.F.S., ELEV., E.S.C., F.D., F.O.C., F.O.M., FN., FLR., FT., FR-S, GA., GALV., G.I., G.L., GYP. BD., H.M., HR., HT., H.V.A.C. with corresponding definitions.

27 MATERIALS & ABBREVIATIONS SCALE: NOT TO SCALE

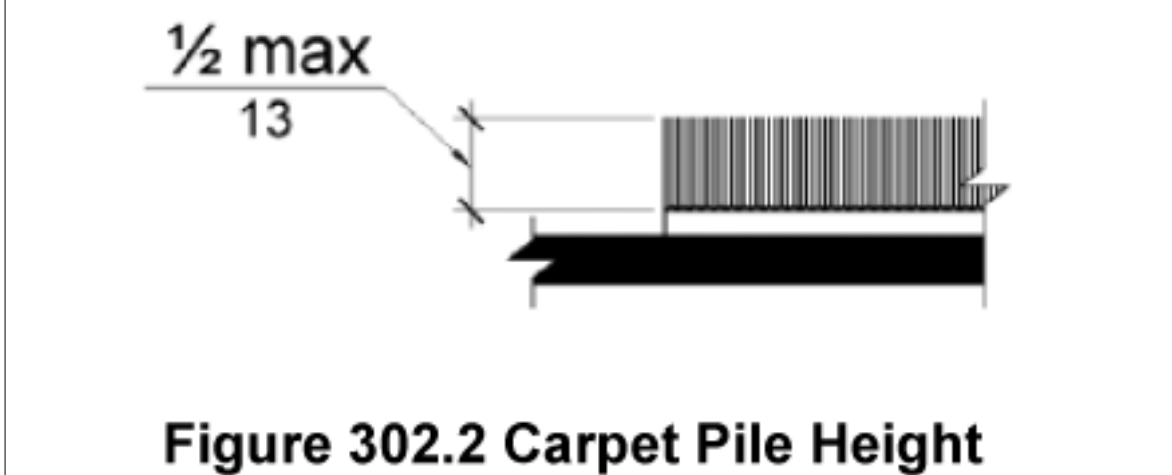


Figure 302.2 Carpet Pile Height

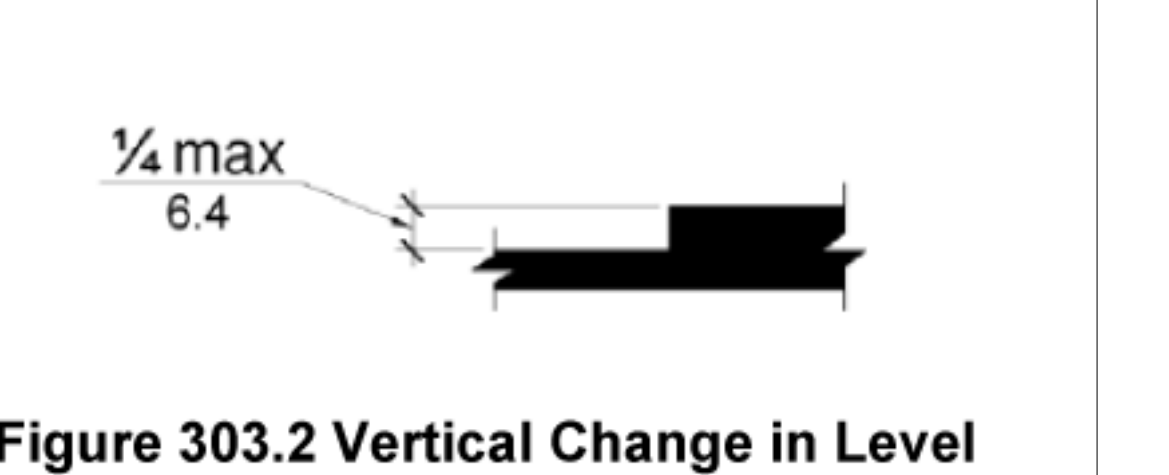


Figure 303.2 Vertical Change in Level

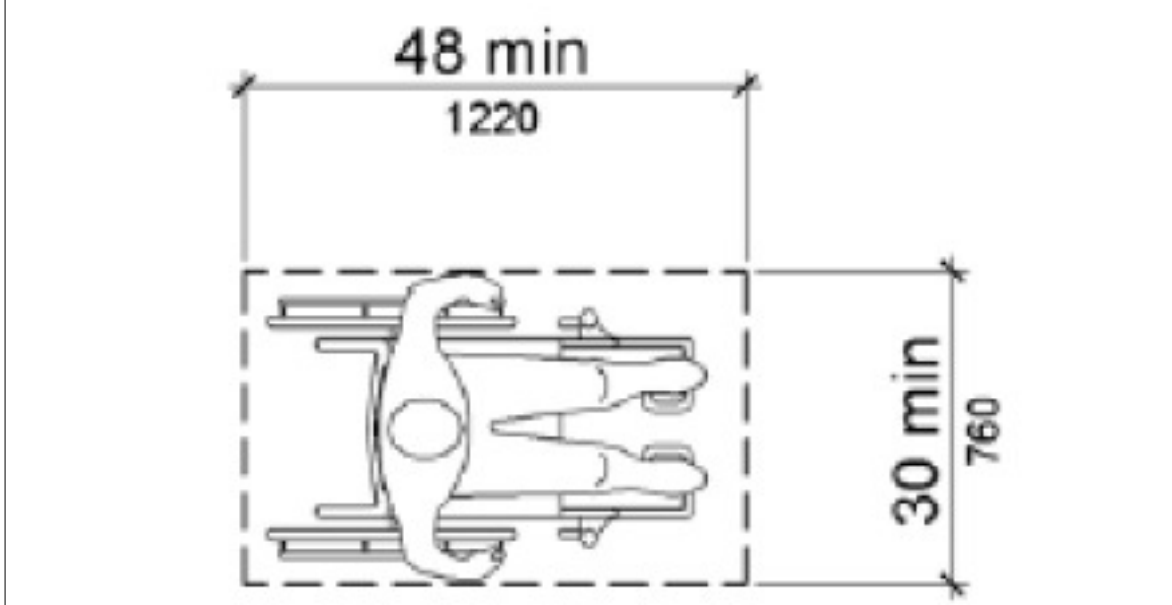


Figure 305.3 Clear Floor or Ground Space

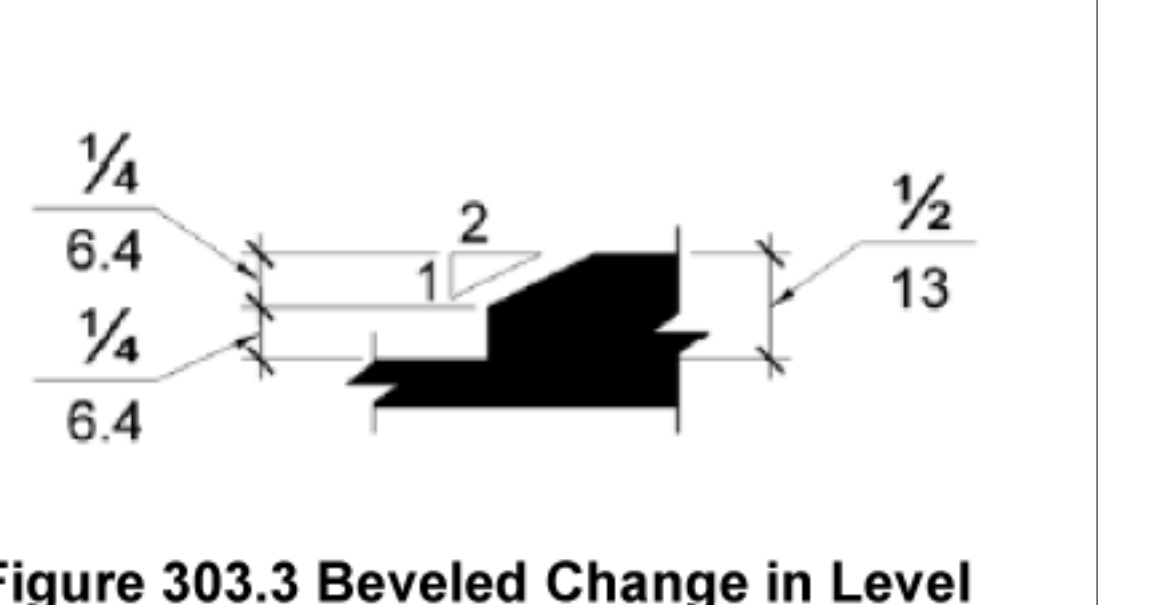


Figure 303.3 Beveled Change in Level

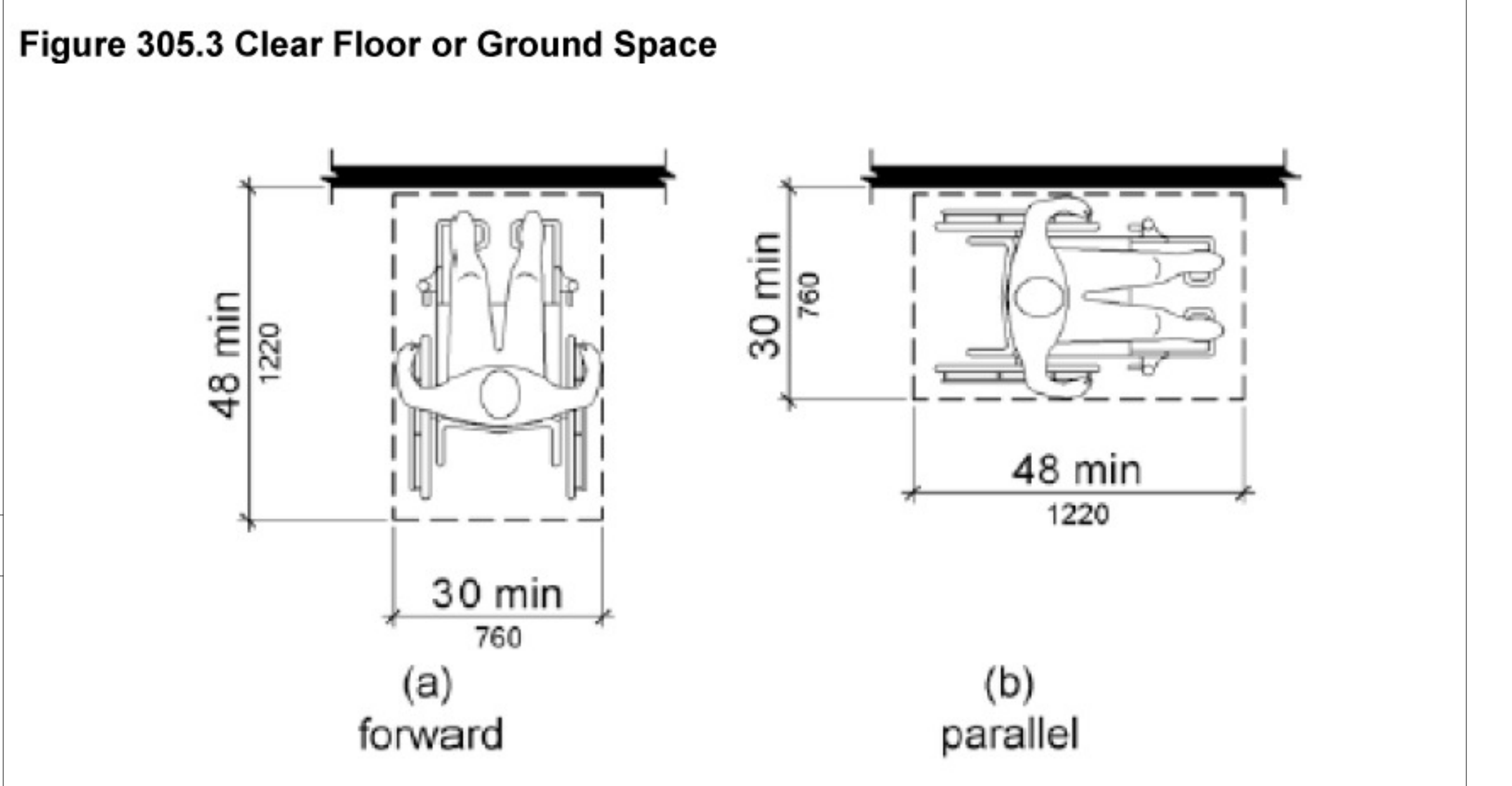
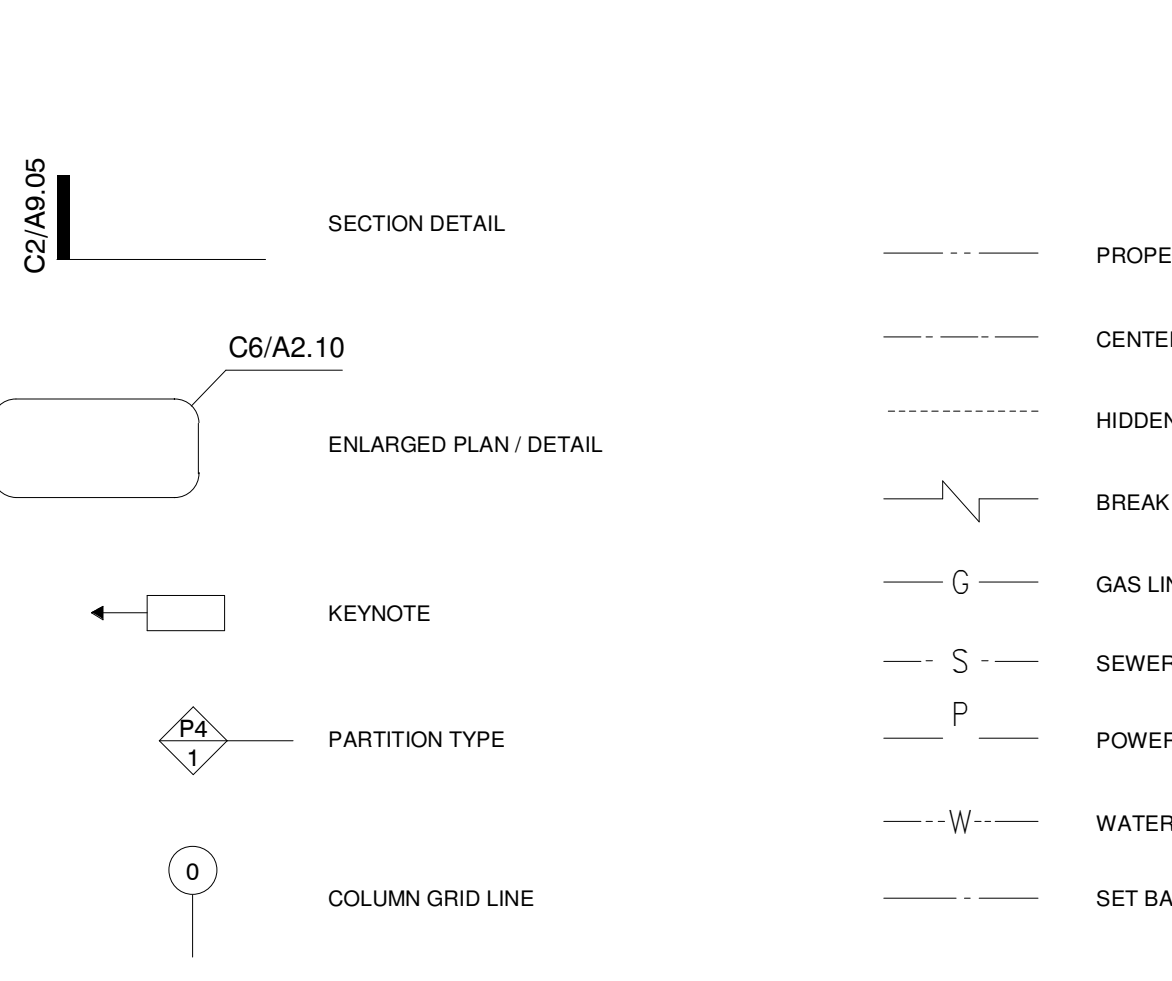


Figure 305.5 Position of Clear Floor or Ground Space

22 ACCESSIBILITY INFORMATION SCALE: NOT TO SCALE



26 SYMBOLS & LEGEND SCALE: NOT TO SCALE

Table listing symbols and their corresponding descriptions for the drawing set.

CODES IN FORCE: STAFFORD TX, 2019. 2017 National Electrical Code, 2015 International Building Code, 2015 International Energy Conservation Code, 2015 International Existing Building Code, 2015 International Fire Code, 2015 International Fuel and Gas Code, 2015 International Mechanical Code, 2015 International Plumbing Code, Texas Accessibility Standards (TAS), 2012 Edition.

2015 INTERNATIONAL EXISTING BUILDING CODE (IN FORCE IN STAFFORD)

COMPLIANCE METHOD: WORK AREA COMPLIANCE METHOD. NO CHANGE IN OCCUPANCY. CONTINUOUS AS E OCCUPANCY. SEISMIC REQUIREMENTS RISK CATEGORY III (E OCCUPANCY). ASSUME SSE-1n.

ALTERATION LEVEL: 2. INCLUDES RECONFIGURING THE SPACE. DOES NOT INVOLVE MORE THAN 50% OF THE AGGREGATE AREA OF THE BUILDING(S).

REQUIREMENTS FOR ALTERATION LEVEL 2: 801.3. NEW ELEMENTS MUST COMPLY WITH 2015 IBC. EXCEPTIONS: WINDOWS DO NOT NEED TO MEET LIGHT/VENTILATION REQUIREMENTS OF IBC. NEW ELECTRICAL EQUIPMENT SHALL COMPLY WITH SECTION 808. DEAD END CORRIDORS ARE PER SECTION 805.6. MINIMUM CEILING HEIGHT IS 7'-0".

803.2. EXISTING OPENINGS MUST BE ENCLOSED WITH 1 HOUR FIRE RATED ENCLOSURES. EXCEPTIONS: WHERE OPENING IS NOT REQUIRED BY IBC OR IFC. IF NOT STAIRWAY, OPENING CAN BE BLOCKED BY MIN. 2" SOLID WOOD OR EQUIVALENT.

803.4. INTERIOR FINISHES MUST COMPLY WITH IBC. EXISTING FINISHES THAT DO NOT MEET IBC REQUIREMENTS CAN BE COATED WITH FIRE-RETARDANT COATING IN ACCORDANCE WITH MANUFACTURER'S INSTRUCTIONS TO ACHIEVE REQUIRED RATING.

803.5. GUARD RAILS MUST BE ADDED AT ALL DROPS MORE THAN 30" IN ALL WORK AREAS. IF EXISTING GUARD RAILS IN WORK AREA ARE AT RISK OF COLLAPSE, NEW GUARD RAILS MUST BE PROVIDED.

803.6. IF BUILDING IS FULLY SPRINKLERED - THEN FIRE RESISTANCE RATINGS MUST MEET CURRENT CODE. TEAM SHALL REQUEST THAT CODE OFFICIAL REVIEW BUILDING ELEMENTS TO DETERMINE EXISTING BUILDING CODE FIRE RESISTANCE RATINGS.

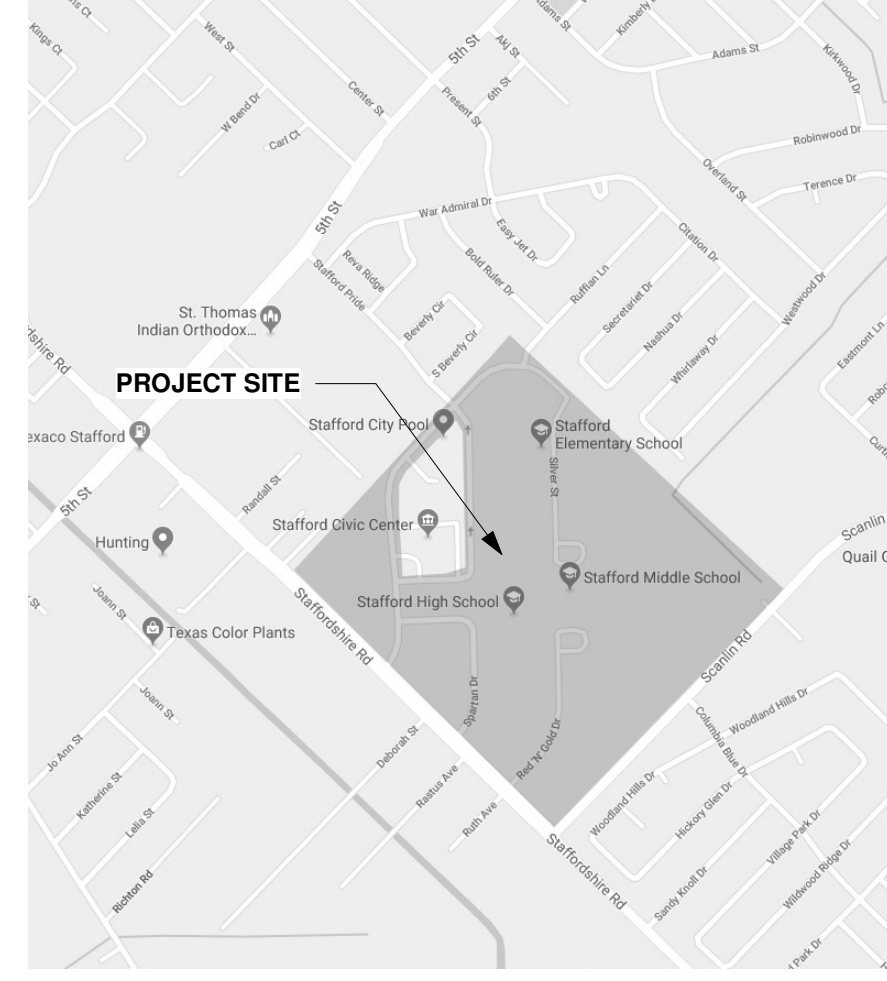
804 - FIRE PROTECTION. IBC GOVERNS FOR CORRIDOR RATINGS; SPRINKLER SYSTEMS WITHIN WORK AREAS. FIRE ALARM AND DETECTION REQUIRED PER 804.1.1 THRU 804.1.3. INSTALL IN WORK AREAS PER IBC FOR GROUP E.

805 - EGRESS. IBC GOVERNS FOR EGRESS WITHIN WORK AREAS. 1 EXIT IS ALLOWED IF THE STORY AT THE LEVEL OF EXIT DISCHARGED DOES NOT EXCEED 50 OCCUPANTS AND THE EXIT ACCESS TRAVEL DISTANCE IS 75 FEET OR LESS.

811.1. ENERGY CONSERVATION: ALTERATIONS MUST MEET IECC CODE REQUIREMENTS; BUT IT IS NOT NECESSARY TO BRING ENTIRE BUILDING UP TO IECC CODE.

CHAPTER 15: CONSTRUCTION SAFEGUARDS: CONSTRUCTION BARRICADES SHALL MEET REQUIREMENTS OF CHAPTER 15.

12 CODE ANALYSIS SCALE: NOT TO SCALE



11 PROJECT SITE SCALE: NOT TO SCALE



XII. Minimum Required Plumbing fixtures: Per table 2902.1. Use Group B: Business: 24 occupants total. Water closets: 1 per 25 for the first 50 and 1 per 50 for the remainder exceeding 50. Lavatory: 1 per 40 for the first 80 and 1 per 80 for the remainder exceeding 80. Drinking Fountains: 1 per 100. Service Sink: Required if occupant load is greater than 15.

XIII. Miscellaneous Remarks. Combustible materials shall be governed by 2012 IBC Section 603. All wood (plywood, blocking, etc.) shall be fire treated.

Refer to drawing FP1.01 for Sprinkler System & other Fire Protection Requirements.

Refer to drawing A0.21 for Egress, Occupant Load, & Toilet Fixture Counts

07 ALTERNATES SCALE: NOT TO SCALE

ALTERNATE 01: PROVIDE WORK INDICATED AT CTE KITCHEN. RE: A2.12, & FOODSERVICE DRAWINGS.

ALTERNATE 02: PROVIDE WORK INDICATED AT WELDING LAB. RE: M1.07 & E2.05.

ALTERNATE 03: PROVIDE WORK INDICATED AT HIGH SCHOOL AV ROOM. RE: M1.05

ALTERNATE 04: PROVIDE DEMOLITIONS INDICATED AT MULTIPURPOSE SPACE IN CTE. RE: A2.12

06 PROJECT VICINITY SCALE: NOT TO SCALE



GENERAL table: Lists project information, code analysis information, partition types, and accessibility requirements.

DEMOLITION table: Lists overall demolition plan and enlarged demolition plans.

ARCHITECTURAL table: Lists overall construction plan, floor plans, and details for library, restrooms, and elevations.

MECHANICAL table: Lists symbols, notes, and legends, and schedules for kitchen, lab B2, lab B3, green room, and library.

ELECTRICAL table: Lists symbols, notes, and legends, and panel schedules.

PLUMBING table: Lists schedules, notes, and legends, and riser diagrams for sanitary and domestic.

FOODSERVICE table: Lists FS equipment plan, FS plumbing plan, FS electrical plan, and FS elevations.

FIRE PROTECTION table: Lists fire protection plan.

02 SHEET INDEX SCALE: NOT TO SCALE

Sheet Index table listing sheet numbers, titles, and scales for various drawing components.

01 PROJECT LOCATION SCALE: NOT TO SCALE



AUTOARCH Architects, LLC. 6200 Savoy, Suite 100 Houston, TX 77066 (713) 952-3366 (713) 952-5002 www.autoarch.net

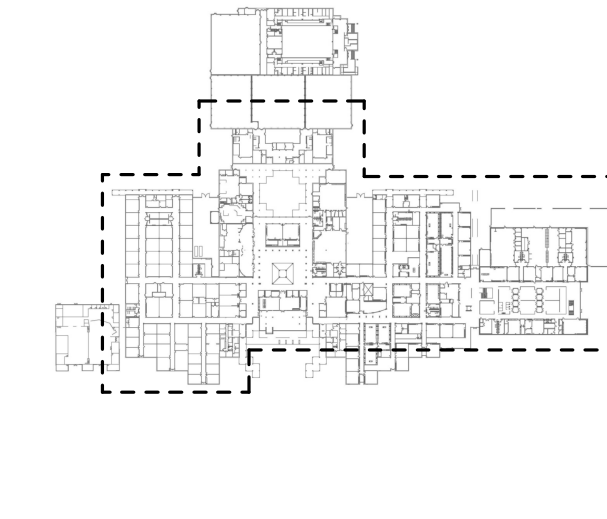
CONSULTANTS table: Lists MEP Engineers (Infrastructure Associates), Structural Engineers (Dally Associates), and other professionals.

PROFESSIONAL SEAL: Includes the professional seal of the Architect.

PROFESSIONAL SEAL: Includes the professional seal of the Engineer-Architect.

STAFFORD HIGH SCHOOL & MAGNET SCHOOL RENOVATIONS. 1625 STAFFORDSHIRE ROAD, STAFFORD, TX 77477

Table with 4 columns: #, Date, Issue for Bid, Permit, & Construction, Issued For.



PROJECT INFORMATION table: Lists Project Number (19006-A), Drawn By (LT), Checked By (AW), Approved By (MS), and Drawing Title.

Drawing Number A0.00

FAN POWERED VARIABLE VOLUME TERMINAL UNITS (FPT) (UNITS SERVED BY AHU-3)

TAG	SERVING	SUPPLY AIR FLOW (CFM)	UNIT SIZE	MIN INLET SIZE (INCH)	MIN PRIMARY AIR FLOW (CFM)	MIN INLET PRESSURE (IN WG)	HEATING (CFM)	INDUCTION FAN (CFM)	FAN EXTERNAL PRESSURE (IN WG)	FAN MOTOR (HP)	ELECTRICAL (V/PH/Hz)	ELECTRIC REHEAT			MAKE AND MODEL	NOTES
												EAT (F)	LAT (F)	CAPACITY (KW)		
MARK	SERVING	SUPPLY AIR FLOW (CFM)	UNIT SIZE	MIN INLET SIZE (INCH)	MIN PRIMARY AIR FLOW (CFM)	MIN INLET PRESSURE (IN WG)	HEATING (CFM)	INDUCTION FAN (CFM)	FAN EXTERNAL PRESSURE (IN WG)	FAN MOTOR (HP)	ELECTRICAL (V/PH/Hz)	EAT (F)	LAT (F)	CAPACITY (KW)	MAKE AND MODEL	NOTES
FPB-HS-1	STUDY ROOMS	900	30	10	360	0.5		900	0.5	3/4	277/1/60	58	85	7	PRICE - FDCA-2 OR EQUAL	I, 2, 3
FPB-HS-2	STUDY ROOMS	800	30	8	320	0.5		800	0.5	3/4	277/1/60	58	85	7	PRICE - FDCA-2 OR EQUAL	I, 2, 3
FPB-I-1-3	TECH LAB	1,400	40	12	420	0.5		1400	0.5	3/4	277/1/60	61	85	9	PRICE - FDCA-2 OR EQUAL	I, 2, 3
FPB-I-4-1	KITCHEN	1,250	40	12	500	0.5		1250	0.5	3/4	480/5/60	58	85	11	PRICE - FDCA-2 OR EQUAL	I, 2, 3

NOTES:
 1. PROVIDE ECH FAN MOTORS CONFIGURED FOR ANALOG SPEED CONTROL FROM BAS SYSTEM.
 2. PROVIDE FACTORY-MOUNTED DISCONNECT SWITCHES ON FAN-POWERED VAV UNITS WITH SINGLE-POINT ELECTRICAL CONNECTION & CONTROL VOLTAGE POWER SUPPLY.
 3. PROVIDE FACTORY SUPPLIED SFT INLET AND DISCHARGE ATTENUATOR.

DIFFUSER NECK-DUCT SIZE SCHEDULE

SUPPLY AIR (CFM)	DIFFUSER-NECK AND BRANCH DUCT SIZE
0 - 100	6"Ø
101 - 200	8"Ø
201 - 300	10"Ø
301 - 400	12"Ø
401 - 500	14"Ø
501 - 600	16"Ø

AIR OUTLET SCHEDULE

MARK	MAKE	TYPE	MODEL	FACE SIZE (INCH)	NECK SIZE	NUMBER OF SLOTS	SLOT WIDTH (INCH)	MATERIAL	MOUNTING	REMARKS
(A)	TITUS	SUPPLY	OMINI-AA	24"x24"	SEE NECK SCHEDULE	N/A	N/A	ALUMINUM	CEILING	I,2,3,4
(B)	TITUS	RETURN	45F	24"x24"	22X22	N/A	N/A	ALUMINUM	CEILING	I,3,4
(C)	TITUS	EXHAUST	50F	24"x24"	SEE NECK SCHEDULE	N/A	N/A	ALUMINUM	CEILING	I,2,3,4
(D)	TITUS	SUPPLY	272FS	REFER PLANS	N/A	N/A	N/A	ALUMINUM	CEILING	I,2,3,4
(E)	TITUS	RETURN	272FL	REFER PLANS	N/A	N/A	N/A	ALUMINUM	WALL	2

NOTES:
 1. PROVIDE ROUND NECK ADAPTER FOR ALL SUPPLY, RETURN, AND EXHAUST AIR DIFFUSERS WHERE NECESSARY.
 2. REFER TO PLANS FOR AIR FLOW RATE.
 3. PROVIDE DIFFUSERS WITH OPPOSED BLADE DAMPERS
 4. COORDINATE LAY-IN/GYPSUM BOARD CEILING TYPE WITH FINAL ARCHITECTURAL PLANS.
 5. PROVIDE DIFFUSERS WITH INSULATED PLENUM.

FAN SCHEDULE

PLAN MARK	SERVING	AIR VOLUME (CFM)	FAN TYPE	DRIVE TYPE	E.S.P. IN WG	FAN SPEED (RPM)	MOTOR			MANUFACTURER & MODEL	LOCATION	REMARKS
							HP	V/PHz	RPM			
KEF-NHS-3	KITCHEN EXHAUST	3200	UP-BLAST	DIRECT	0.75	1325	2	208/1/60	1325	GREENHECK CUE-VG	ROOF	I, 2, 3, 4, 6, 7
KSF-NHS-3	KITCHEN MAKE-UP	3000	CENTRIFUGAL	DIRECT	0.75	1750	1-1/2	115/1/60	1750	GREENHECK AS	ROOF	I, 2, 3, 4, 6, 7
EF-C-1	LIBRARY RR	150	CENTRIFUGAL	DIRECT	0.75	1725	1/4	115/1/60	1725	GREENHECK G-VG	ROOF	I, 2, 3, 4, 5, 6
WEF-1	WELDING LAB	11,200	UP-BLAST	DIRECT	0.5	860	5	460/5/60	860	GREENHECK CUE-C-VGD	ROOF	I, 2, 3, 4, 6, 8

- NOTES:
 1. FAN SHALL BE SUITABLE FOR OUTDOOR INSTALLATION AND OPERATION.
 2. PROVIDE MANUFACTURER'S SUPPLIED 14" HIGH ROOF CURB AND BIRD SCREEN. REFER SPECIFICATIONS FOR WIND SPEED REQUIREMENTS.
 3. PROVIDE MOTORIZED DAMPER FOR UNIT WITH 300+ CFM. PROVIDE BACK-DRAFT DAMPER ON UNITS WITH LESS THAN 300 CFM. MOTORIZED DAMPER SHALL CLOSE WHEN ASSOCIATED FAN IS DE-ENERGIZED.
 4. PROVIDE ECH MOTOR WITH DIAL MOUNTED ON UNIT MOTOR ENCLOSURE.
 5. INTERLOCK FAN OPERATION WITH RTU SERVING THE CORRESPONDING AREA.
 6. PROVIDE UNIT WITH SINGLE POINT ELECTRICAL CONNECTION AND DISCONNECT SWITCH.
 7. INTERLOCK FAN OPERATION WITH KITCHEN HOOD.
 8. PROVIDE FAN WITH WALL MOUNTED SWITCH.



AUTOARCH Architects, LLC.

6200 Savoy, Suite 100
 Houston, TX 77038
 (713) 952-3366
 (713) 952-5002
 www.autoarch.net



CONSULTANTS:

MEP ENGINEERS
INFRASTRUCTURE ASSOCIATES
 713-622-0120

STRUCTURAL ENGINEERS

DALLY ASSOCIATES
 713-337-8881



Infrastructure Associates
 INFRASTRUCTURE ASSOCIATES INC.
 401 HICKINGHILL AVENUE, SUITE 200
 HOUSTON, TEXAS 77037
 TSPS REGISTRATION NO. 34148
 (713) 422-0225 PH. (713) 422-0253 FAX
 WWW.INFRASTRUCTURE.COM

PROFESSIONAL SEAL:

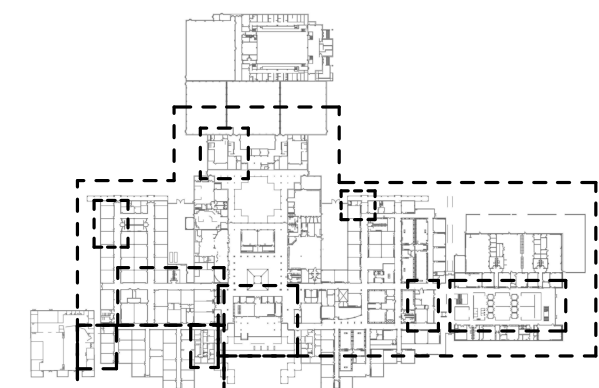


A PROJECT FOR:

**STAFFORD
 HIGH SCHOOL
 & MAGNET
 SCHOOL
 RENOVATIONS**

1625 STAFFORDSHIRE
 ROAD,
 STAFFORD, TX 77477

#	Date	ISSUED FOR
1	2020/01/31	90% CD
2	2020/03/02	98% CD Review
3	2020/03/13	Issue for Bid, Permit, and Construction



Project Number	19006-A
Drawn By	LT
Checked By	AW
Approved By	MS
Drawing Title	SCHEDULES

Drawing Number M0.02



AUTOARCH Architects, LLC.

6200 Savoy, Suite 100
Houston, TX 77036
t (713) 952-3366
f (713) 952-5002
www.autoarch.net



CONSULTANTS:

MEP ENGINEERS
INFRASTRUCTURE ASSOCIATES
713-622-0120

STRUCTURAL ENGINEERS
DALLY ASSOCIATES
713-337-8881



INFRASTRUCTURE ASSOCIATES, INC.
401 WESTHOPE AVENUE, SUITE 200
HOUSTON, TEXAS 77057
TELEPHONE: (713) 622-0120
FAX: (713) 622-0551
WWW.INFRASTRUCTURE.COM

PROFESSIONAL SEAL:

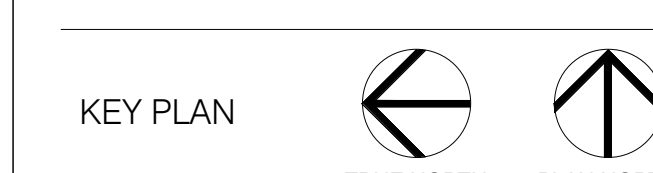
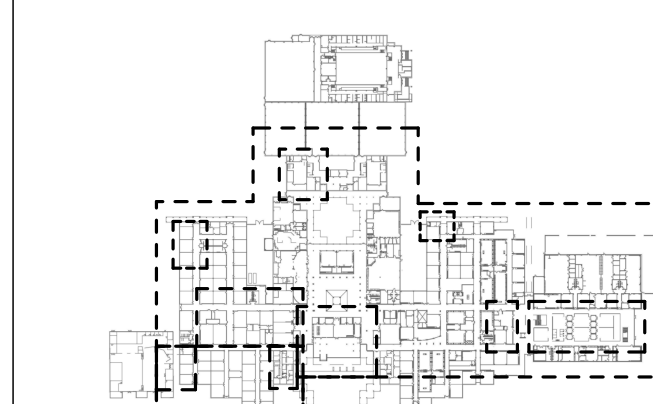
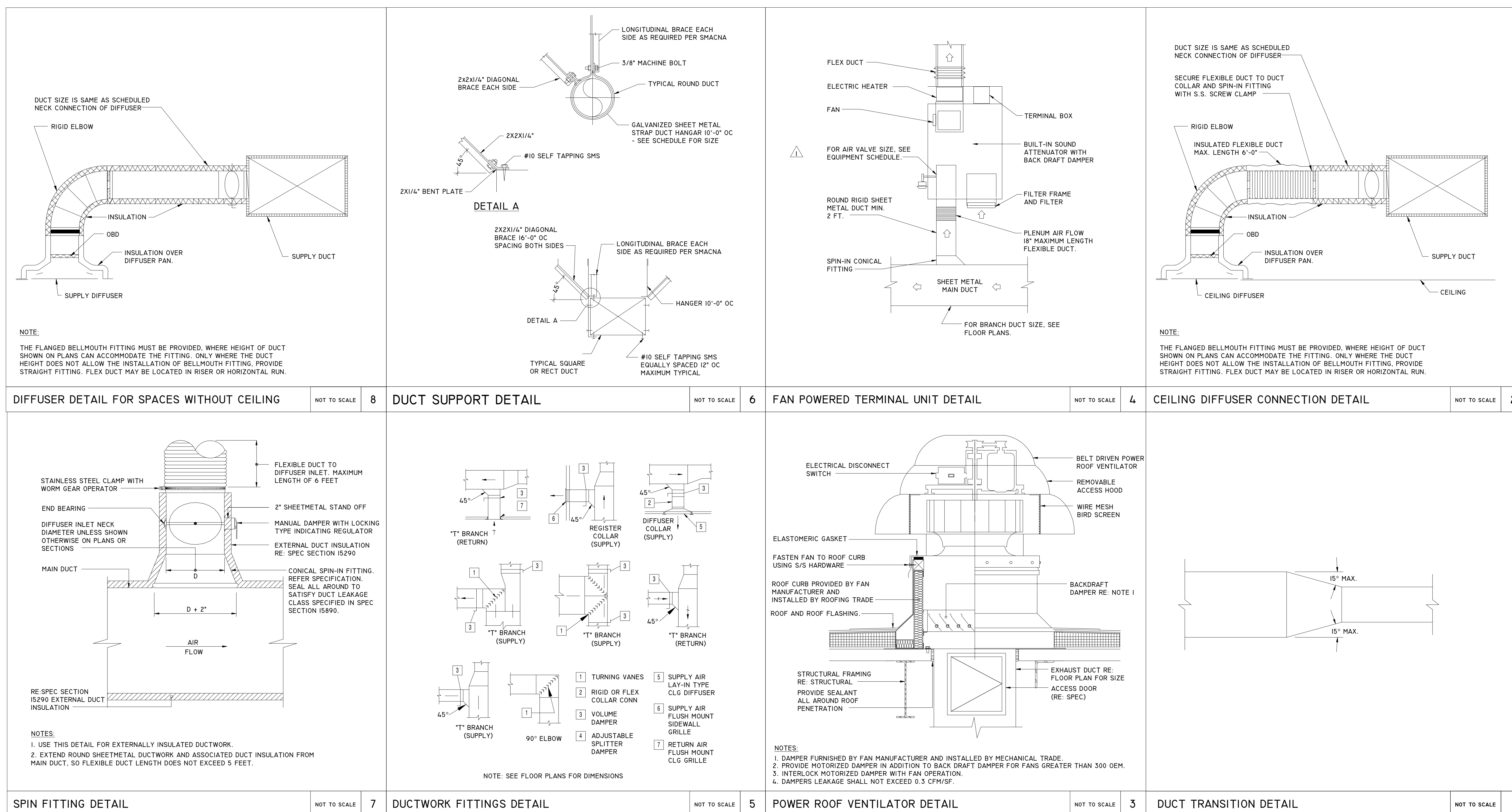


A PROJECT FOR:

STAFFORD HIGH SCHOOL & MAGNET SCHOOL RENOVATIONS

1625 STAFFORDSHIRE
ROAD,
STAFFORD, TX 77477

#	Date	ISSUED FOR
1	2020/01/31	90% CD
2	2020/03/02	98% CD Review
3	2020/03/13	Issue for Bid, Permit, and Construction



Project Number	19006-A
Drawn By	LT
Checked By	AW
Approved By	MS
Drawing Title	DETAILS

Drawing Number **M2.01**