



8612 Eagle Creek Parkway, Savage, MN 55378
Tel: (952) 746-5880 ♦ Fax: (952) 746-5882
Mailbox@FieldConsultingInc.com
www.FieldConsultingInc.com

Independent School District #197
1897 Delaware Avenue
Mendota Heights, MN 55118
Attn: Mr. Mark Fenton

RE: Lead in Drinking Water Sampling
SITE: Henry Sibley High School
DATE: December 2018

Dear Mark Fenton,

Field Environmental Consulting, Inc. (FIELD ENVIRONMENTAL) appreciates the opportunity to provide results for lead in drinking water sampling conducted at Henry Sibley High School.

Initial sampling ("first draw") was completed on Friday, October 5, 2018. Results indicated eight (8) fixtures above the action level of 20 ppb (or $\mu\text{g/L}$); water cooler on second floor, two (2) kettles and two (2) sinks in kitchen, sink faucet in E116, D102, and Staff Room B200.

After receiving results, the water cooler located on the second floor was replaced; no lead was detected in the fixture after replacement.

ISD #197 Operations Department replaced sink faucets and cleaned aerators within classrooms E116 and D102. The two sinks located in the kitchen were also replaced and aerators were cleaned. FIELD ENVIRONMENTAL re-sampled these identified taps on Friday, November 16, 2018 and Tuesday, December 11, 2018.

Sink faucets in rooms E116 and D102 including two (2) kitchen taps were still above the recommended action level of 20 ppb. However, 30-second flush samples were well below this value. Therefore, flushing the water, prior to consumption is an allowable method to reduce lead concentration. The fixtures, including kitchen kettles, were labeled "flush water prior to consumption."

ISD #197 Operations Department placed a point-of-use filtration device on the sink faucet located in Staff Room B200. FIELD ENVIRONMENTAL re-sampled this tap on Friday, December 21, 2018. No lead was detected in the first draw or flush sample. No additional action necessary.

Analysis was conducted by Pace Analytical Services, Inc. of Minneapolis, Minnesota using EPA Method 200.8 ICPMS for determination of trace elements in drinking water.

PREPARED and REVIEWED BY:

Field Environmental Consulting, Inc.

A handwritten signature in cursive script that reads "Amy Weinzierl".

Amy Weinzierl (CSP #27824)
Environmental Health and Safety Manager
amy@fieldconsultinginc.com
952-746-5880

School Name: Henry Sibley High School (HS)

Date: 10/5/2018, 11/16/2018, 12/11/2018, 12/21/2018

Floor	Room Number	Location	Sample ID	Type DF = Drinking Fountain S = Sink WC = Water Cooler BF = Bottle Filler K=Kettle	Lead Result 10/5/18 (ppb)	Lead Result 11/16/18 (ppb)	Lead Result 30 Sec Flush 11/16/18 (ppb)	Lead Result 12/11/18 or 12/21/18 (ppb)	Lead Result 30 Sec Flush 12/11/18 or 12/21/18 (ppb)
First	E131	Classroom	1	S	2.5	-	-	-	-
First	-	Hallway	2	WC	1.5	-	-	-	-
First	E121A	Classroom	3	S	8.9	-	-	-	-
First	E116	Classroom	4	S	30.7	37.3	7.8	66.9	11.6
First	D103	Classroom	5	S	1.3	-	-	-	-
First	D103	Classroom	6	S	5.8	-	-	-	-
First	D103	Classroom	7	S	2.8	-	-	-	-
First	D103	Classroom	8	S	2.1	-	-	-	-
First	D103	Classroom	9	S	1	-	-	-	-
First	D103	Classroom	10	S	1.7	-	-	-	-
First	D103	Classroom	11	S	1.3	-	-	-	-
First	D102	Classroom	12	S	328	189	10.1	95	8.6
First	-	Hallway	13	WC	ND	-	-	-	-
First	-	Hallway	14	BF	ND	-	-	-	-
First	D132	Classroom	15	S	2.5	-	-	-	-
First	C102	Classroom	16	WC	ND	-	-	-	-
First	C117	Kitchen	17	S	6.8	-	-	-	-
First	C117	Kitchen	18	S	31.8	265	2.3	249	8.6
First	C117	Kitchen	19	S	27.2	1160	38.2	20.3	5.6
First	C117	Kitchen	20	S	3.8	-	-	-	-
First	C117	Kitchen	21	K	1000	623	3.3	-	-
First	C117	Kitchen	22	K	21.4	20.2	1.1	-	-
First	C117	Kitchen	23	S	19.6	-	-	-	-
First	C117	Kitchen	24	S	7.2	-	-	-	-
First	C117	Kitchen	25	S	2.7	-	-	-	-
First	C117	Kitchen	26	S	3	-	-	-	-
First	C117	Kitchen	27	S	8.1	-	-	-	-
First	-	Washroom	28	S	1.1	-	-	-	-
First	-	Washroom	29	S	7.5	-	-	-	-
First	-	Washroom	30	S	6	-	-	-	-
First	-	Cafeteria	31	WC	ND	-	-	-	-
First	-	Cafeteria	32	WC	ND	-	-	-	-
First	C104	Classroom	33	S	1.8	-	-	-	-
First	C104	Classroom	34	S	ND	-	-	-	-
First	-	Hallway	35	WC	ND	-	-	-	-
First	-	Hallway	36	BF	ND	-	-	-	-
First	-	Band Area	37	WC	17.3	-	-	-	-
First	-	Hallway	38	WC	0.96	-	-	-	-
First	-	Hallway	39	WC	1.1	-	-	-	-
No sample			40			No sample			
No sample			41			No sample			
No sample			42			No sample			
No sample			43			No sample			
Second	D201	Gym	44	WC	0.12	-	-	-	-
Second	-	Hallway	45	WC	ND	-	-	-	-
Second	-	Hallway	46	WC	0.25	-	-	-	-
Second	-	Hallway	47	WC	0.24	-	-	-	-
Second	-	Hallway	48	BF	0.17	-	-	-	-
Second	-	Hallway	49	WC	0.12	-	-	-	-
Second	-	Hallway	50	BF	0.12	-	-	-	-
Second	D203	Classroom	51	S	2.9	-	-	-	-
Second	D203	Classroom	52	S	4.1	-	-	-	-
Second	D204	Classroom	53	S	4.6	-	-	-	-
Second	D204	Classroom	54	S	2.6	-	-	-	-
Second	-	Snack Bar	55	S	3.3	-	-	-	-
Second	-	Nurse	56	S	1.7	-	-	-	-
Second	C200A	Classroom	57	S	0.52	-	-	-	-
Second	-	Hallway	58	WC	1.2	-	-	-	-
Second	A241	Classroom	59	WC	ND	-	-	-	-
Second	-	Hallway	60	WC	0.11	-	-	-	-
Second	-	Hallway	61	BF	0.15	-	-	-	-
Second	A242A	Classroom	62	S	0.5	-	-	-	-
Second	A232	Classroom	63	S	2.6	-	-	-	-
Second	B200	Staff	64	S	52.4	35.9	50.2	ND	ND
First	B140	Classroom	65	S	0.42	-	-	-	-
Second	-	Hallway	66	WC	0.96	-	-	-	-

School Name: Henry Sibley High School (HS)

Date: 10/5/2018, 11/16/2018, 12/11/2018, 12/21/2018

Floor	Room Number	Location	Sample ID	Type DF = Drinking Fountain S = Sink WC = Water Cooler BF = Bottle Filler K=Kettle	Lead Result 10/5/18 (ppb)	Lead Result 11/16/18 (ppb)	Lead Result 30 Sec Flush 11/16/18 (ppb)	Lead Result 12/11/18 or 12/21/18 (ppb)	Lead Result 30 Sec Flush 12/11/18 or 12/21/18 (ppb)
Second	A236	Classroom	67	WC	ND	-	-	-	-
Second	A236	Classroom	68	S	0.32	-	-	-	-
Second	-	Hallway	69	WC	35.3	ND	-	-	-
Second	-	Real Apartment	70	S	2.7	-	-	-	-
Second	-	Real Apartment	71	S	0.81	-	-	-	-
Third	A336	Classroom	72	S	0.44	-	-	-	-
Third	-	Hallway	73	WC	0.29	-	-	-	-
Third	-	Hallway	74	WC	0.28	-	-	-	-
Third	A340	Classroom	75	S	4.9	-	-	-	-
Third	A342	Classroom	76	S	1	-	-	-	-
Third	A342	Classroom	77	WC	ND	-	-	-	-
Third	-	Hallway	78	WC	0.68	-	-	-	-
Third	C306	Classroom	79	S	15.4	-	-	-	-
First	-	Building/Grounds Office	80	WC	ND	-	-	-	-

Henry Sibley High School
 1st Floor
 Lead in Drinking Water
 Project # 19010



First Draw Sampling (October 2018)

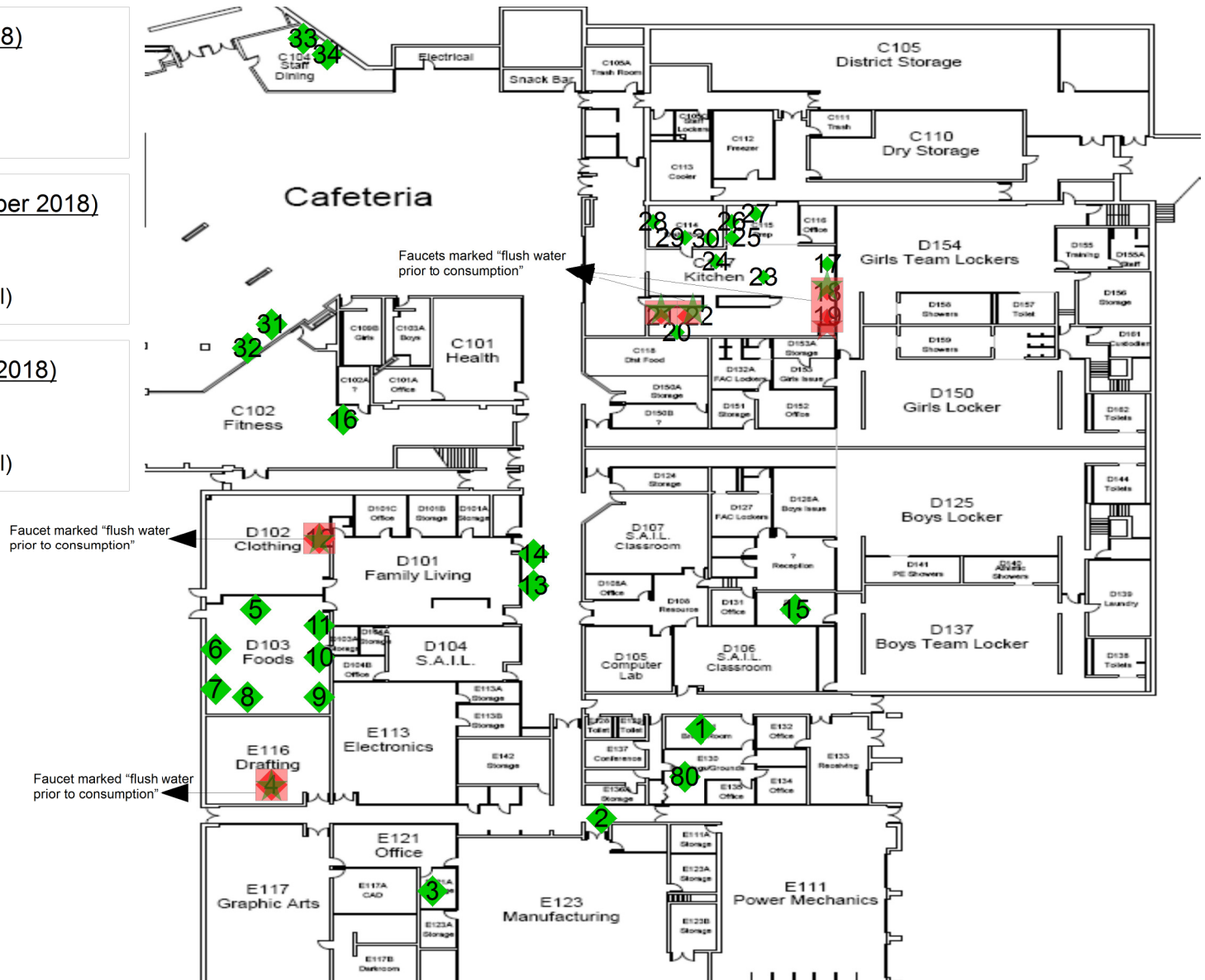
- ◆ Lead <= 20 ppb
- ◆ Lead > 20 ppb (Action Level)

First Draw Sampling (November 2018)

- Lead <= 20 ppb
- Lead > 20 ppb (Action Level)

Flush Sampling (November 2018)

- ★ Lead <= 20 ppb
- ★ Lead > 20 ppb (Action Level)



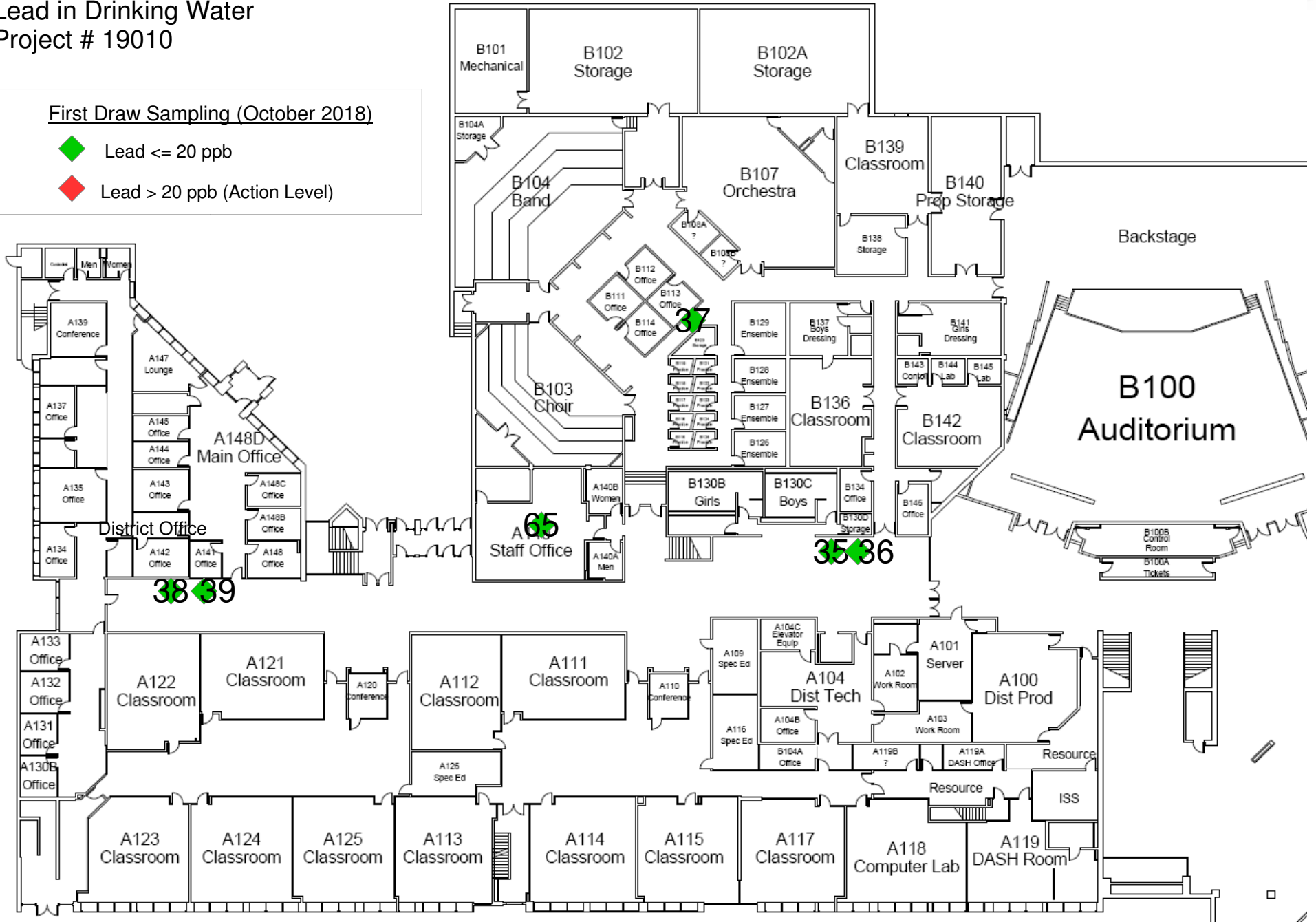
Science laboratory sinks were not tested; District posted signage on such fixtures stating "water not for drinking"

Henry Sibley High School
 1st Floor
 Lead in Drinking Water
 Project # 19010



First Draw Sampling (October 2018)

- ◆ Lead <= 20 ppb
- ◆ Lead > 20 ppb (Action Level)



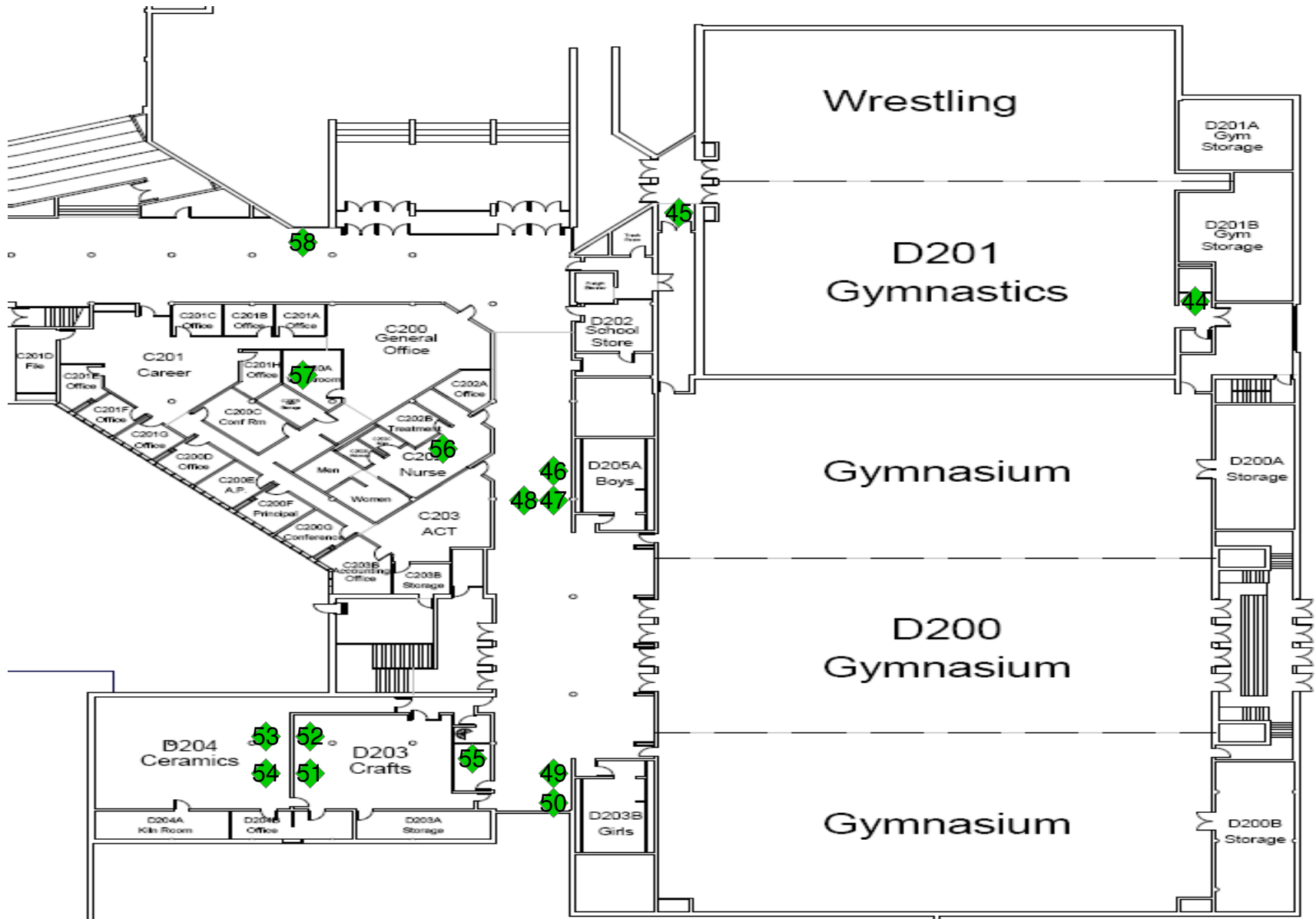
Science laboratory sinks were not tested; District posted signage on such fixtures stating "water not for drinking"

Henry Sibley High School
 2nd Floor
 Lead in Drinking Water
 Project # 19010



First Draw Sampling (October 2018)

- ◆ Lead ≤ 20 ppb
- ◆ Lead > 20 ppb (Action Level)



Science laboratory sinks were not tested; District posted signage on such fixtures stating "water not for drinking"

Henry Sibley High School
2nd Floor
Lead in Drinking Water
Project # 19010

First Draw Sampling (October 2018)

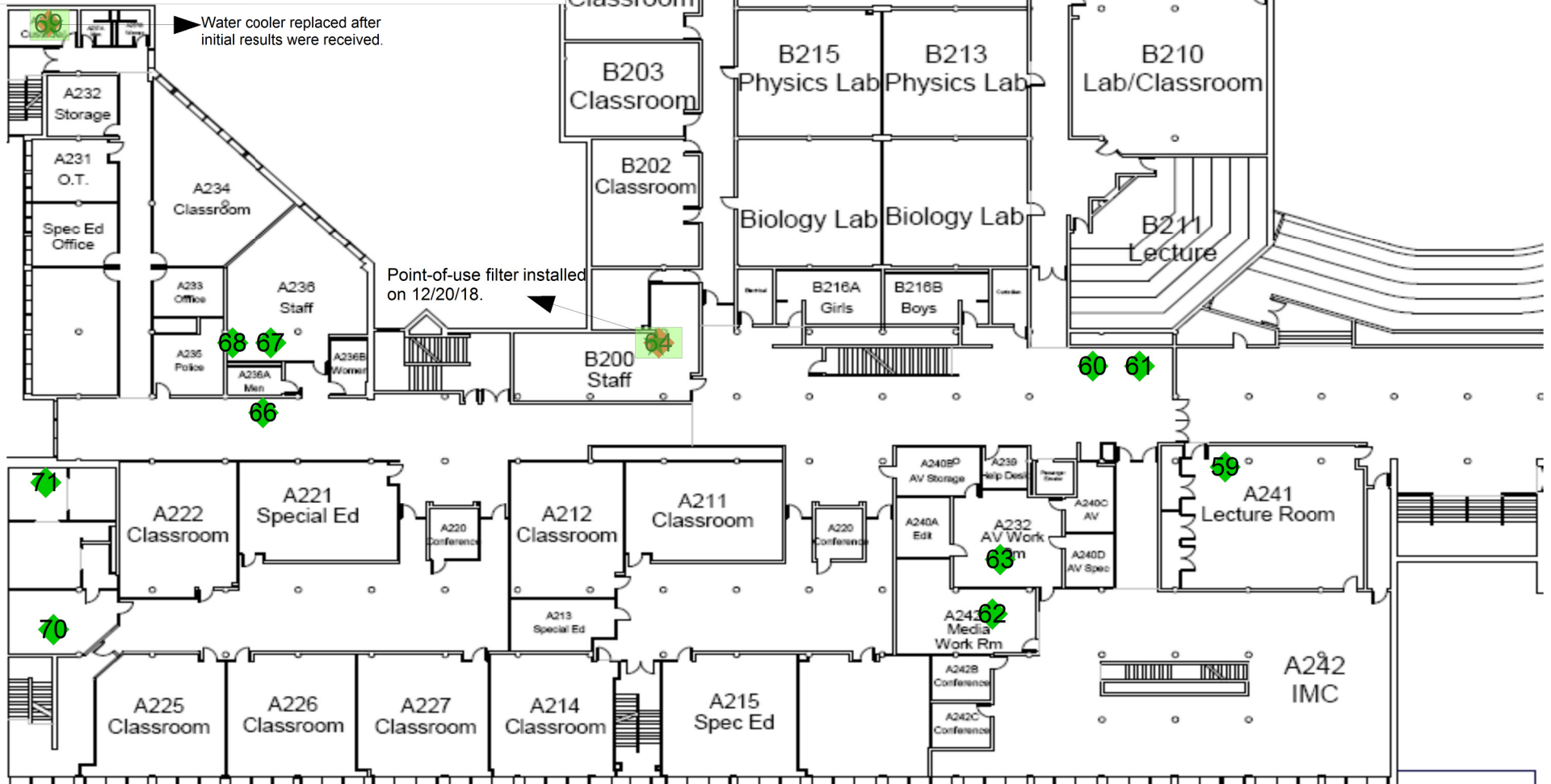
- ◆ Lead <= 20 ppb
- ◆ Lead > 20 ppb (Action Level)

First Draw Sampling (November and December 2018)

- Lead <= 20 ppb
- Lead > 20 ppb (Action Level)

Flush Sampling (November and December 2018)

- ★ Lead <= 20 ppb
- ★ Lead > 20 ppb (Action Level)



Science laboratory sinks were not tested; District posted signage on such fixtures stating "water not for drinking"

Henry Sibley High School
 3rd Floor
 Lead in Drinking Water
 Project # 19010

First Draw Sampling (October 2018)

- ◆ Lead ≤ 20 ppb
- ◆ Lead > 20 ppb (Action Level)



Science laboratory sinks were not tested; District posted signage on such fixtures stating "water not for drinking"