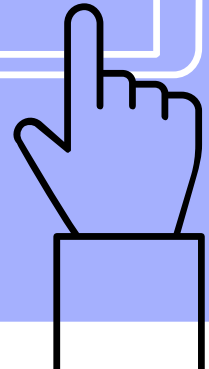
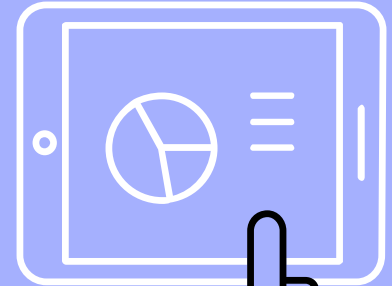
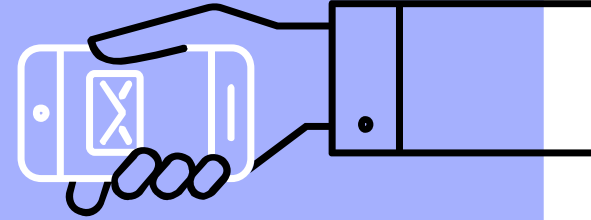
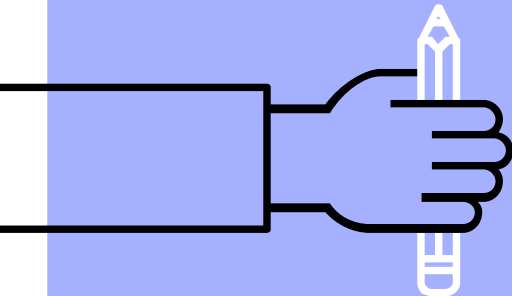
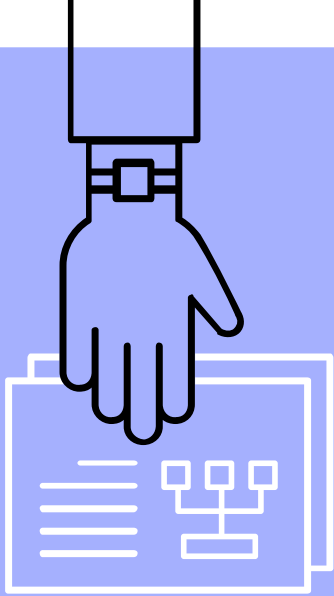


# Welcome to Dana Middle School



**Dana**  
*Dolphins*





Committed to providing students with tools and opportunities for success that create life-long learners and compassionate, productive citizens





National Forum Schools to Watch

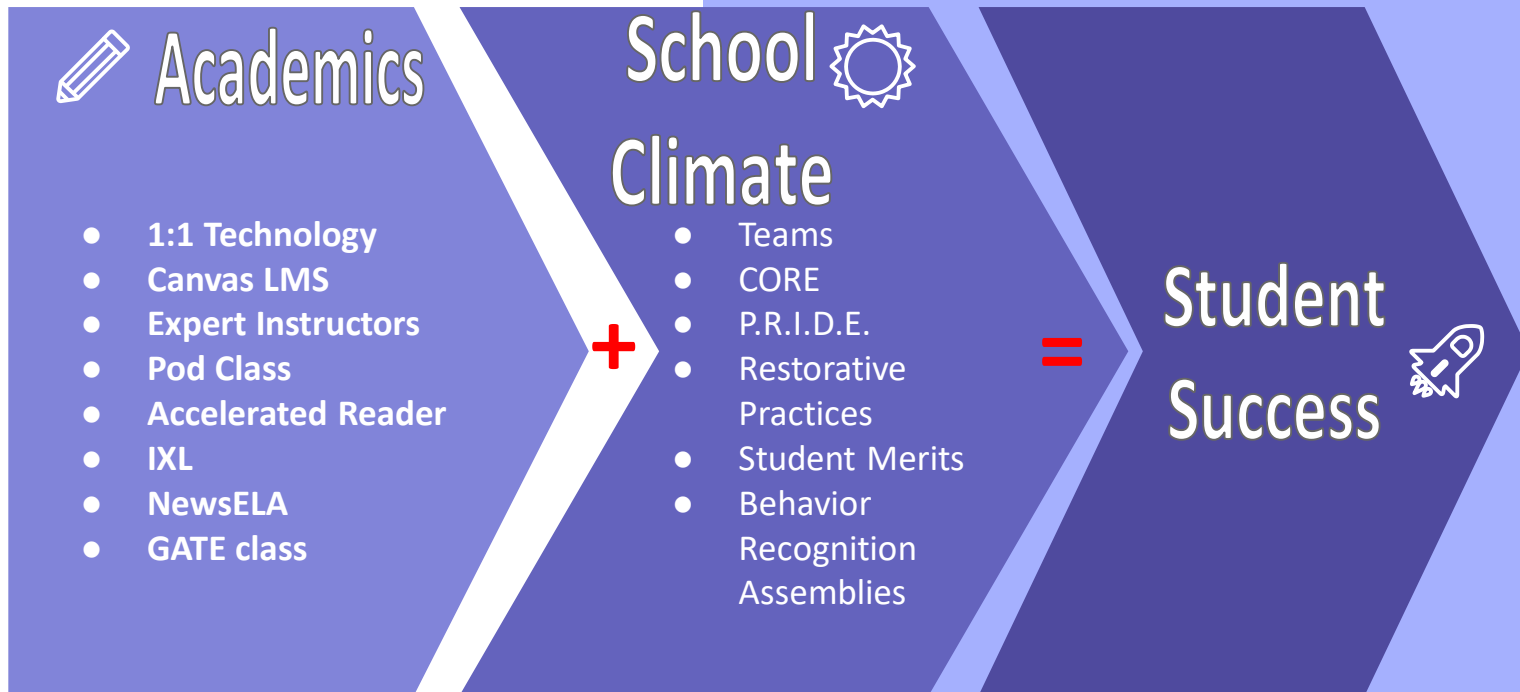
California Gold Ribbon School

## School Recognitions



California Distinguished School

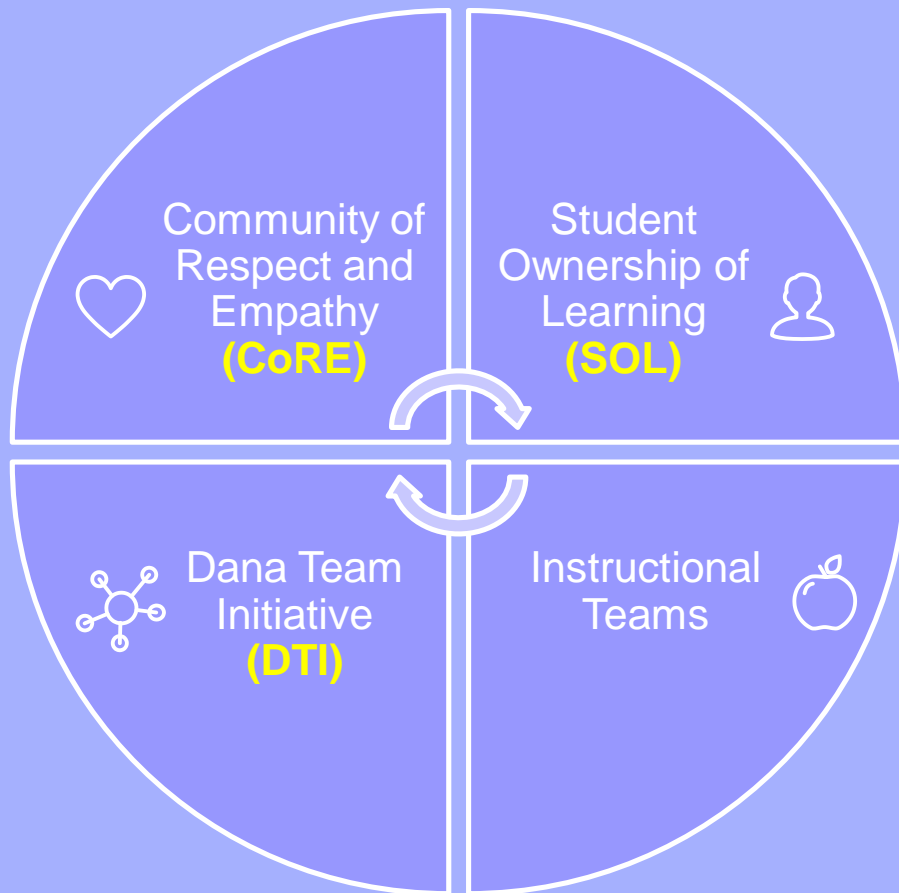
## Student Priorities





# Signature Practices

what sets Dana apart



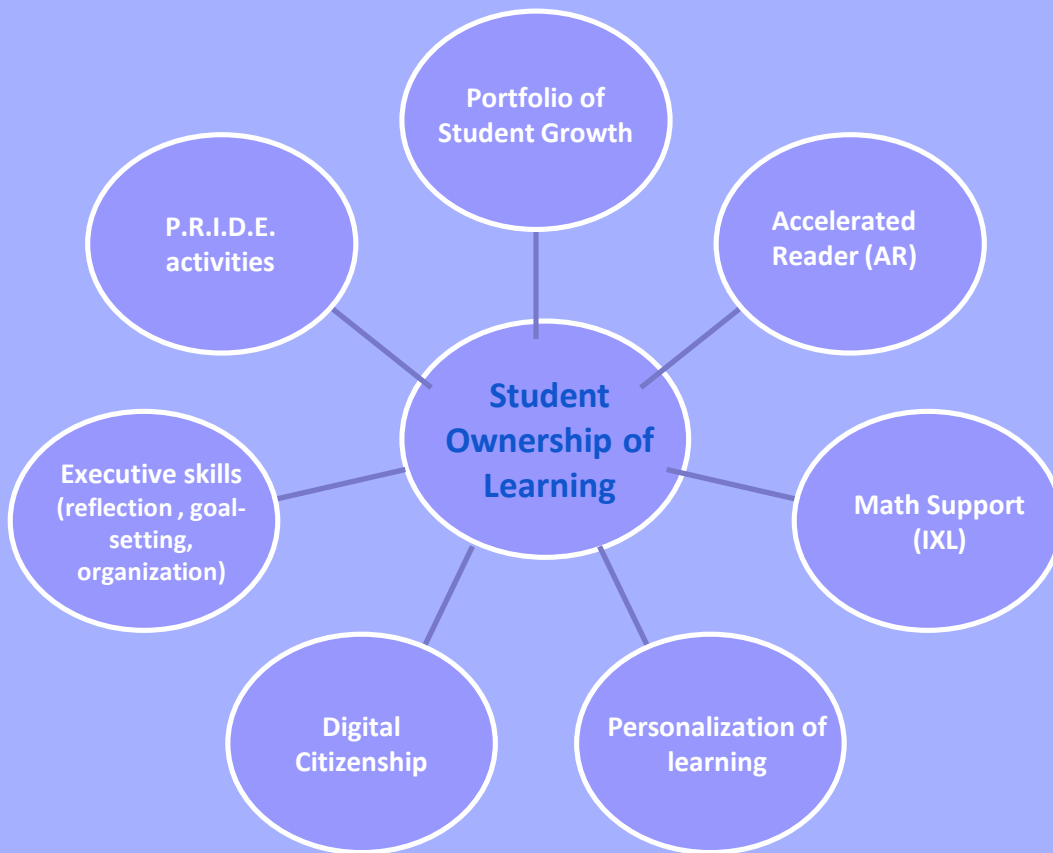


# Student Ownership of Learning



## Pod Class

daily time for personalized student growth



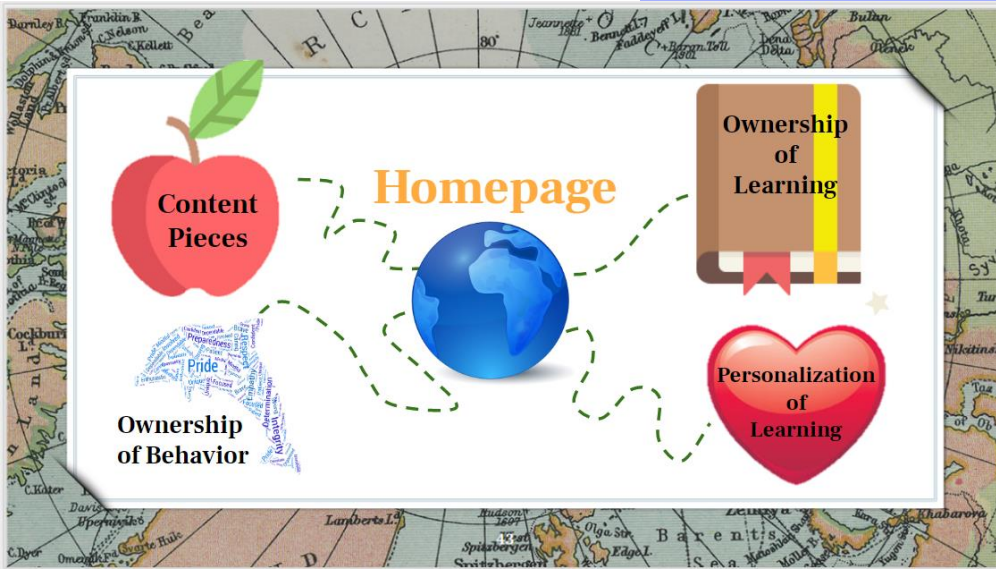
# Student Ownership of Learning

Portfolios for Student Growth  
individual presentations developed throughout  
the year to demonstrate growth and learning

Collection  
and  
Analysis of  
Work to Assess  
Progress

Self Reflection of  
Grades and  
Assessments

Personal  
Goal  
Setting





# Student Ownership of Learning

# Student Led Conferences (SLCs)

presenting a year of learning and growing

98% family participation







## Community of Respect and Empathy (CORE)

### P.R.I.D.E.

creating a school climate based on preparedness, respect,  
integrity, determination, and empathy

- CORE Week: first week of school devoted to teaching PRIDE attributes
- Merit System and Merit Market to promote positive behavior yearlong
- Dana's two counselors help support the positive and safe culture
- PRIDE lessons throughout the year taught through Pod
- Olweus-Bullying prevention program with lessons throughout the year in Pod



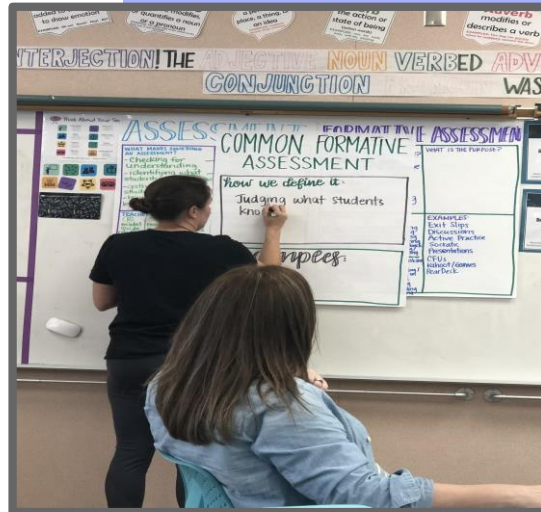
# Instructional Teams—All About Collaboration

Teachers working together to cultivate best practices

Evolving our teaching practice to reflect:

- ❑ New California Standards (ELA/Math)
- ❑ Next Generation Science Standards (NGSS)
- ❑ New Social Studies Framework

- ❑ 1:1 Digital Infusion - Canvas
- ❑ Engagement and excitement for student learning!





# Math Leadership by Design (MLD)

math teachers transform lesson delivery in the classroom

## Instructional Teams

**restructured lessons to  
emphasize active practice  
and student collaboration**





# Elective Wheel for 6<sup>th</sup> Grade (quarter long classes)

- Intro to PLTW
- Art
- Drama
- Coding





## Instructional Teams

# Fine Arts Elective Options (Instead of the Wheel)



**concert and symphonic  
band**

**beginning and advanced  
strings electives**





## Instructional Teams

# Physical Fitness Education & Crossfit Kids







## Dana Team Initiative

## Sea Stars and Sea Otters



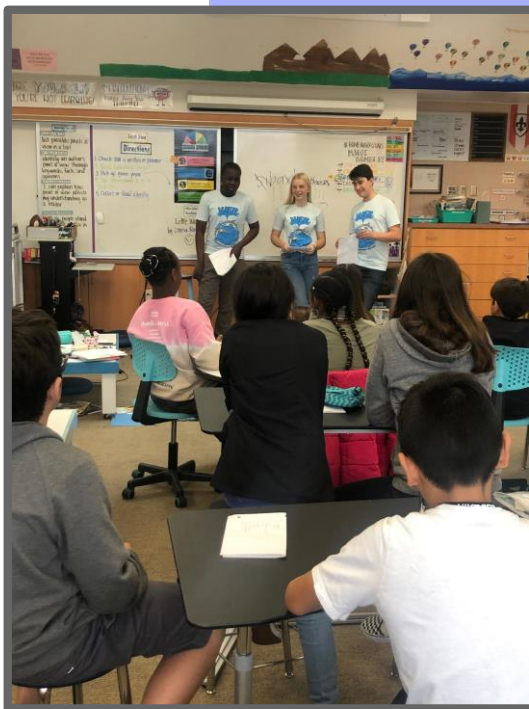
**Team of teachers work together and share approximately 165 students.**

**Personalization-- Team Effort**





## 6th Grade at Dana



## Transitional Year

- ❑ Interdisciplinary Teams
- ❑ Block Schedule
- ❑ PE & Electives
- ❑ Separate Lunch/Specific Restrooms
- ❑ WEB & Camp







# Thank you!

**Find out more at:**

[www.dana.wiseburn.org](http://www.dana.wiseburn.org)



@dolphinsdana



R.H. Dana Middle School

