



**TEMPLE CITY UNIFIED SCHOOL DISTRICT
CITIZENS' OVERSIGHT COMMITTEE
MEETING AGENDA
APRIL 22, 2014, 5:30 PM
Temple City High School Senate Room
(Posted April 21, 2014)**

1. Call to Order

2. Roll Call

- 2.1 Citizens' Oversight Committee Members
 - Steven Tyre, Chairperson- 2 Year Term
 - Sherry Goin, Vice Chairperson- 2 Year Term
 - Lucy Liou- 2 Year Term
 - Cynthia Vance- 2 Year Term
 - Gina Aparicio- 1 Year Term

3. Approval(s)

- 3.1 Action Item: It is recommended that the Committee approve the agenda as presented.
- 3.2 Action Item: It is recommended that the Committee approve the COC Meeting Minutes from January 21, 2014.

4. Statements

- 4.1 Public statements not related to agenda items.

5. Introduction and Welcome (Kathy Perini)

6. New Business

- 6.1 Bond Program Budget Overview- California Financial Services will present a bond program overview and a bond program budget overview.
- 6.2 Bond Program Overview and Programming Update – Daniel Rodriguez of TELACU Construction Management will present an update of the planning process of the Bond Program of each campus.

7. Information Item

- 7.1 The attached Interactive White Board Costs was sent to COC members on 2/25/14 for information.
- 7.2 Site Map of Temple City High School is attached for your reference during site tour.

8. Future Items

9. Adjournment



TCUSD Measure S: Citizens' Oversight Committee

Meeting No. 2

Date: January 21, 2014

Time: 6:30 PM

Location: Cloverly Elementary- Media Center

ATTENDEES

COC Members:

Steven Tyre (ST)
Sherry Goin (SG)
Lucy Liou (LL)
Will McKnight (WM)
Cynthia Vance (CV)
Gina Aparicio (GA)

Support Staff:

Chelsea Kang Smith (CS)
David Jaynes (DJ)
Dale Shaffer (DS)
Daniel Rodriguez (DR)
Octavio Nava (ON)
Kwok Su (KS)
Betty Hanson (BH)

Temple City Unified School District
Temple City Unified School District
Temple City Unified School District
TELACU Construction Management
TELACU Construction Management
TELACU Construction Management
California Financial Services

Minutes prepared by: Kwok Su, TELACU Construction Management

Note: If there are important errors or omissions, please note them so they can be corrected in subsequent reports and documents.

The meeting was opened at 6:30 pm in the Media Center at Cloverly Elementary.

1. Call to Order:

The meeting was called to order by Steven Tyre (Chairperson)

2. Pledge of Allegiance

3. Roll Call:

Steven Tyre: Present
Sherry Goin: Present
Lucy Liou: Present
Rosemary Madnick: Absent
Will McKnight : Present
Cynthia Vance: Present
Gina Aparicio: Present

4. Introduction and Welcome

- 4.1 Chelsea Kang Smith (Superintendent) Introduction
- 4.2 David Jaynes (Chief Business Officer) Introduction



5. Public Comments

- 5.1.1 Members of the public who wishes to speak to COC, is required to complete a speaker request form.
- 5.1.2 Only items on agenda will be addressed
- 5.2.1 Pool to accommodate CIF regulation polo.

6. Approval(s)

- 6.1 Action Item: It is recommended that the Committee approve the agenda as presented. (Motion approved 6-0)
- 6.2 Action Item: It is recommended that the Committee approve the COC Meeting Minutes from September 26, 2013. (Motion approved 6-0)

7. New Business

- 7.1 Bond Program and Construction Update- (DJ/DR)
 - a) Programming and Design Process: Site needs and design to meet those needs with the allocated budget.
 - b) Interactive White Board Project- Install is complete. Reviewed pictures of Eno Board installs at Emperor Elementary. Overview of all components that the project entailed and current training.
 - c) Overview of upcoming design meetings, project schedules, and budgets. (See Attached Presentation)

8. Establish COC Meeting Dates

- 8.1 Next meeting will be in three months and will be a meeting at Temple City High School - (Room TBD) on Tuesday 4/22/14 at 5:30pm.

9. Future Items

- 9.1 Site Meeting at TCHS prior to Summer Construction.

10. Adjournment

- 10.1 The meeting was adjourned at 8:00 pm.

TEMPLE CITY UNIFIED SCHOOL DISTRICT

2012 General Obligation Bond Authorization

Measure S



**Citizen's Oversight
Committee Report**

January 21, 2014

MEASURE S - 2013 SERIES ESTIMATED PROJECT BUDGETS & SCHEDULE

No.	District Goal Number	District Project Name	2013 Series A Estimated Budget	Current Project Phase	Estimated Project Start Date	Project Completion Date
1	0010000	Cloverly Elementary School	\$3,729,332.67	Planning & Construction	July 2014	July 2015
2	0030000	La Rosa Elementary School	4,309,471.67	Planning & Construction	August 2014	August 2015
3	0040000	Longden Elementary School	2,181,360.67	Planning & Construction	September 2014	August 2015
4	0050000	Oak Avenue Intermediate	848,172.67	Planning & Construction	November 2013	February 2014
5	0060000	Temple City High School - Phase 1A	22,955,850.67	Planning & Construction	August 2014	August 2016
6	0070000	Doug Sears Learning Center	602,404.67	Planning & Construction	June 2014	August 2014
7	_____	Series B Projects	4,991,571.35	N/A	N/A	N/A
COMBINED BUDGET ESTIMATES:			<u>\$39,618,164.35</u>			

0010000-92100 - Cloverly Elementary School Modernization

No.	Contractor	Trade	Contracted/ Encumbered	Amount Paid	Remaining Balance
1	Digital Networks Group	Interactive WB Systems	\$58,116.68	\$0.00	\$58,116.68
2	NTD Architecture	Architect Fees	281,153.70	(23,335.76)	257,817.94
3	TELACU Construction Management	Construction & Program Management	210,600.00	(23,787.06)	186,812.94
		PROJECT TOTAL:	\$549,870.38	(\$47,122.82)	\$502,747.56

0020000-92200 - Emperor Elementary School Modernization

No.	Contractor	Trade	Contracted/ Encumbered	Amount Paid	Remaining Balance
1	AGC Design Concept, Inc.	Architect Fees	\$52,455.00	\$0.00	\$52,455.00
2	Digital Networks Group	Interactive WB Systems	291,434.66	0.00	291,434.66
3	DSA	Plan Check Fees	8,850.00	(8,850.00)	0.00
4	TELACU Construction Management	Construction & Program Management	44,550.00	(5,031.87)	39,518.13
		PROJECT TOTAL:	\$397,289.66	(\$13,881.87)	\$383,407.79

0030000-92300 - La Rosa Elementary School Modernization

No.	Contractor	Trade	Contracted/ Encumbered	Amount Paid	Remaining Balance
1	Digital Networks Group	Interactive WB Systems	\$144,867.12	\$0.00	\$144,867.12
2	NTD Architecture	Architect Fees	325,603.20	(27,025.07)	298,578.13
3	TELACU Construction Management	Construction & Program Management	245,025.00	(27,582.02)	217,442.98
		PROJECT TOTAL:	\$715,495.32	(\$54,607.09)	\$660,888.23

0040000-92400 - Longden Elementary School Modernization

No.	Contractor	Trade	Contracted/ Encumbered	Amount Paid	Remaining Balance
1	Digital Networks Group	Interactive WB Systems	\$162,345.12	\$0.00	\$162,345.12
2	Guida Surveying, Inc.	Preliminary Tests	14,680.00	0.00	14,680.00
3	LPA, Inc.	Architect Fees	1,038,354.00	0.00	1,038,354.00
4	TELACU Construction Management	Construction & Program Management	121,500.00	(13,723.30)	107,776.70
		PROJECT TOTAL:	\$1,336,879.12	(\$13,723.30)	\$1,323,155.82

0050000-92700 - Oak Avenue Intermediate School

No.	Contractor	Trade	Contracted/ Encumbered	Amount Paid	Remaining Balance
1	Digital Networks Group	Interactive WB Systems	\$378,599.54	\$0.00	\$378,599.54
2	TELACU Construction Management	Construction & Program Management	22,275.00	(2,889.10)	19,385.90
		PROJECT TOTAL:	\$400,874.54	(\$2,889.10)	\$397,985.44

0070000-92600 - Doug Sears Learning Center

No.	Contractor	Trade	Contracted/ Encumbered	Amount Paid	Remaining Balance
1	Digital Networks Group	Interactive WB Systems	\$40,794.51	\$0.00	\$40,794.51
2	DSA	Plan Check Fees	3,600.00	(3,600.00)	0.00
3	NTD Architecture	Architect Fees	40,000.00	0.00	40,000.00
4	TELACU Construction Management	Construction & Program Management	30,375.00	(3,430.83)	26,944.17
		PROJECT TOTAL:	\$114,769.51	(\$7,030.83)	\$107,738.68

0060000A-92500 - Temple City High School Phase 1A

No.	Contractor	Trade	Contracted/ Encumbered	Amount Paid	Remaining Balance
1	Aztec Technology	Equipment Costs	\$3,898.93	\$0.00	\$3,898.93
2	Digital Networks Group	Interactive WB Systems	500,778.67	0.00	500,778.67
3	Guida Surveying, Inc.	Preliminary Tests	39,980.00	(37,700.00)	2,280.00
4	Home Depot	Maintenance Supplies	222.83	(222.83)	0.00
5	LPA, Inc.	Architect Fees	2,435,040.00	(26,828.95)	2,408,211.05
6	Ninyo & Moore	Preliminary Tests	12,700.00	(12,700.00)	0.00
7	Orbach, Huff & Suarez, LLP	Legal Fees	62,712.50	(8,240.50)	54,472.00
8	Pasadena Star News	Advertisement	493.76	(493.76)	0.00
9	Registrar-Recorder/County Clerk	Advertisement	25,231.40	(25,231.40)	0.00
10	Smitty's Signworks	Advertisement	678.90	(678.90)	0.00
11	TELACU Construction Management	Construction & Program Management	1,322,325.00	(149,075.39)	1,173,249.61
12	Util-Locate, Inc	Preliminary Tests	24,000.00	(24,000.00)	0.00
		PROJECT TOTAL:	\$4,428,061.99	(\$285,171.73)	\$4,142,890.26

2012 MEASURE S G.O. BOND ELECTION

POTENTIAL STATE GRANT FUNDING

The Temple City Unified School District will make every effort to augment its Measure S G.O. Bonds with future State eligible grants. Set forth below are estimated State modernization grant funding amounts that the District may be eligible for under the State's School Facility Program ("SFP"). The estimated timeline for the receipt of these funds is expected in the 2015-2016 Fiscal Year or beyond upon passage of a future State school bond measure and the District's ability to meet the State's required funding criteria.

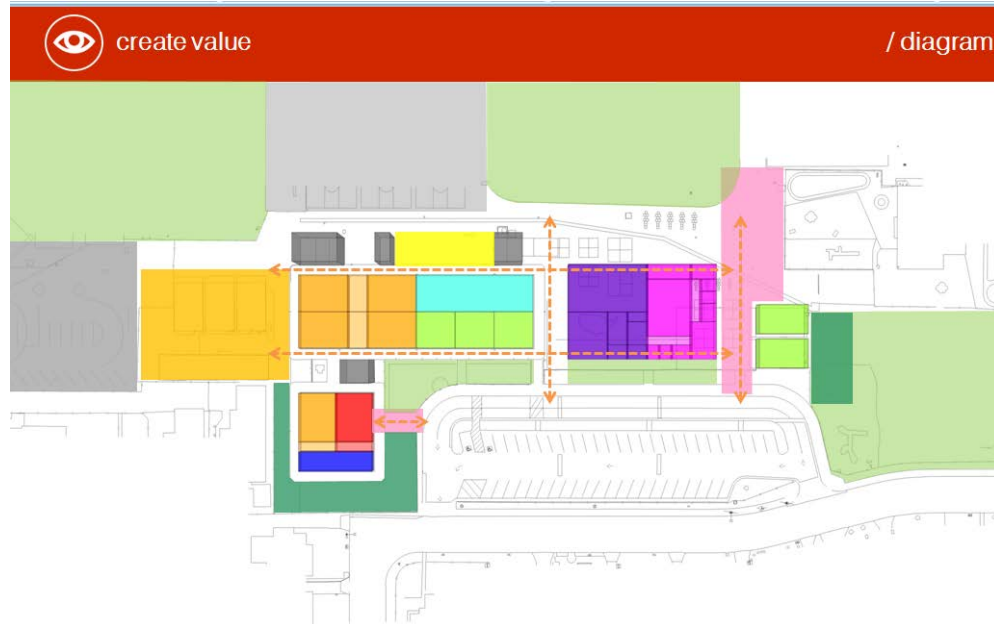
No.	School Name	Potential State Grant Amount	District Share of Project	Total Project Amount
1	Cloverly Elementary	\$1,313,148.87	\$875,432.58	\$2,188,581.45
2	La Rosa Elementary	1,514,261.76	1,009,507.84	2,523,769.60
3	Longden Elementary	3,032,466.91	2,021,644.61	5,054,111.52
4	Oak Avenue Intermediate	1,963,808.22	1,309,205.48	3,273,013.70
5	Dr. Doug Sears Learning Center	185,497.89	123,665.26	309,163.15
6	Temple City High School	<u>7,168,440.52</u>	<u>4,778,960.35</u>	<u>11,947,400.87</u>
TOTAL ESTIMATED STATE GRANTS:		\$15,177,624.17	\$10,118,416.11	\$25,296,040.28

2012 MEASURE S G.O. BOND ELECTION

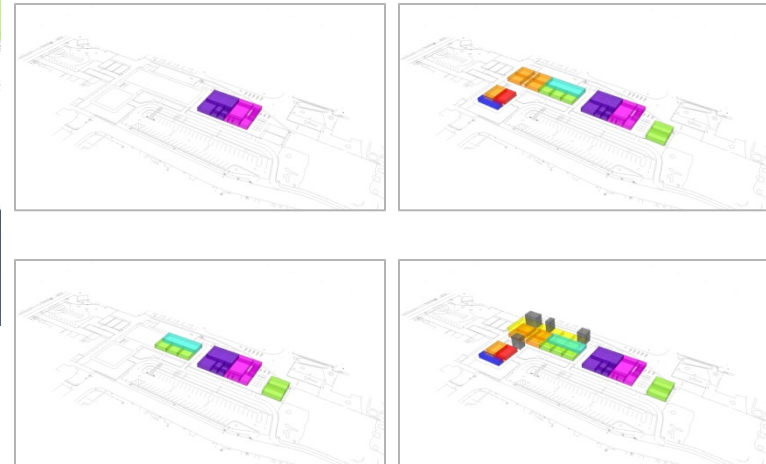
MEASURE S BOND PROGRAMMING

PROGRAMMING PROCESS:

TELACU has developed budget for each project per the Facility Needs Assessment and Improvement plan. Throughout the process, site committees have met with the District and TELACU to develop scope, phasing, and interim housing needs. Site Committees will continue to meet to finalize overall Master Plan for each site.

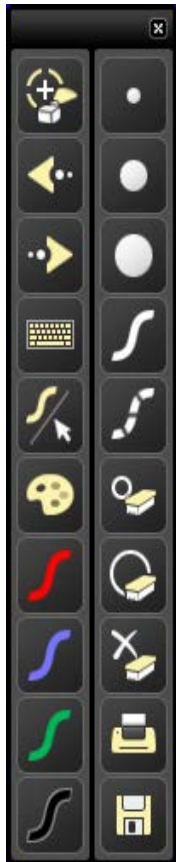


LONGDEN ELEMENTARY



2012 MEASURE S G.O. BOND ELECTION

INTERACTIVE WHITE BOARDS



TELACU and the District have met with the sites to identify a location for the proposed Interactive White Boards for classrooms that are not affected by the Bond Projects. The install was completed on schedule and under contractual budget. The contract installation is 150 Eno Board Systems.

Below is a list of Interactive White Board Components:

- (Polyvision-ENO 2810A)
- Included in Interactive White Board systems are:
Interactive Board, projector, cabling, document camera, and voice lift systems
- Interactive Stylus
- Easiteach Software



DISTRICT WIDE

INTERACTIVE WHITE BOARDS: CONSTRUCTION PROGRESS



TEMPLE CITY HIGH SCHOOL

NEW CLASSROOM BUILDING



TEMPLE CITY HIGH SCHOOL

NEW CLASSROOM BUILDING



Temple City Unified School District and TELACU Construction Management are currently working on the complete programming/ planning for the High School.

Below is a list of work in progress:

- LPA hired as Architecture firm for this project (Board Approved)
- Meetings with site committee
- Site utility locating
- Master Planning
- Design Development
- Interim Housing Design
- Site Survey

Schedule

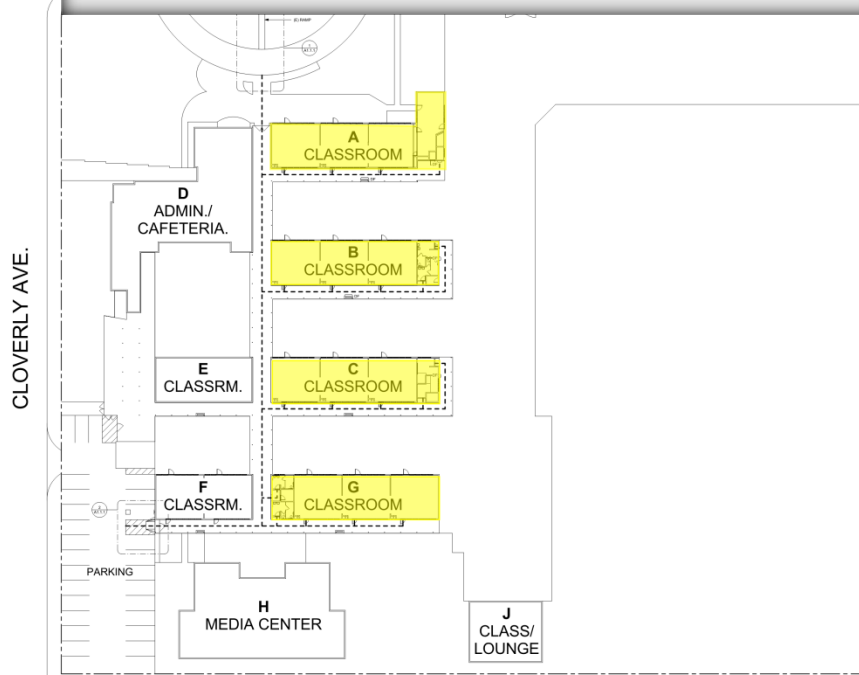
Planning:	August 2013 to August 2014
Construction:	August 2014 to August 2016

CLOVERLY ELEMENTARY

MASTER PLANNING AND MODERNIZATION

MODERNIZATION

- Classroom buildings A,B,C, and G (HVAC, Door and Window replacement, new lights and ACT ceilings, new VCT floor, technology.)
- Technology package for Bldg. E&F
- ADA Upgrade to Restrooms
- Campus Wide ADA Path-of-Travel
- Campus Wide Fire Alarm System



SITE PLAN
SCALE 1"=20'

Temple City Unified School District and TELACU Construction Management are currently working on the complete programming/ planning for the Cloverly Elementary Modernization.

Below is a list of work in progress:

- NTD hired as Architecture firm for this project (Board Approved)
- Meetings with site committee: define Scope of Work, Priorities, Budget, and Schedule
- Master Planning
- Design Development
- Hazardous materials survey report

Schedule

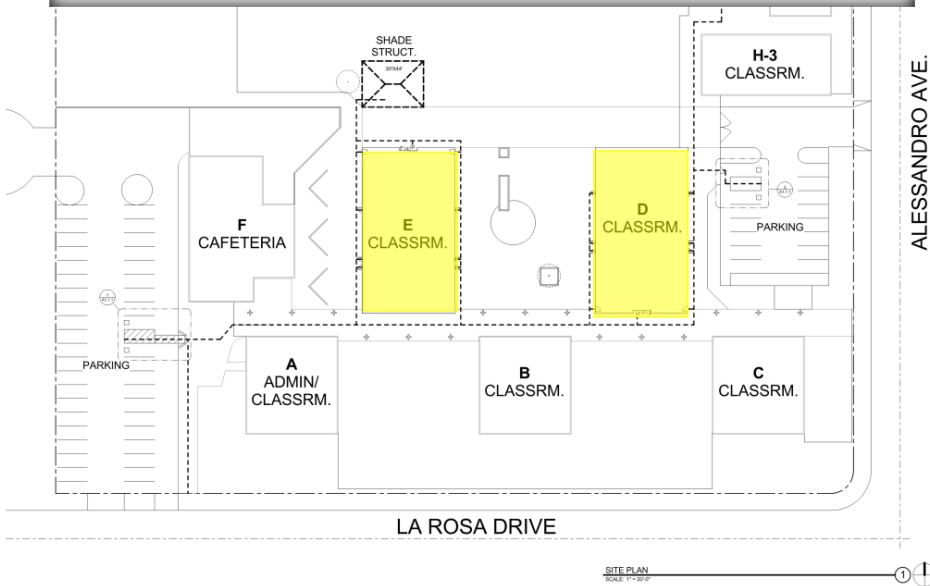
Planning: October 2013 to August 2014
Construction: August 2014 to August 2015

LA ROSA ELEMENTARY

MASTER PLANNING AND MODERNIZATION

MODERNIZATION

- Classroom buildings D & E. (HVAC, Door and Window replacement, new lights and ACT ceilings, new VCT floor, technology.
- HVAC for Bldg. A & B.
- Tech Packages for Bldg. A,B, & C.
- ADA Upgrade to Restrooms
- Campus Wide ADA Path-of-Travel
- Campus Wide Fire Alarm System
- (2) New Shade Structures



Temple City Unified School District and TELACU Construction Management are currently working on the complete programming/ planning for La Rosa Elementary.

Below is a list of work in progress:

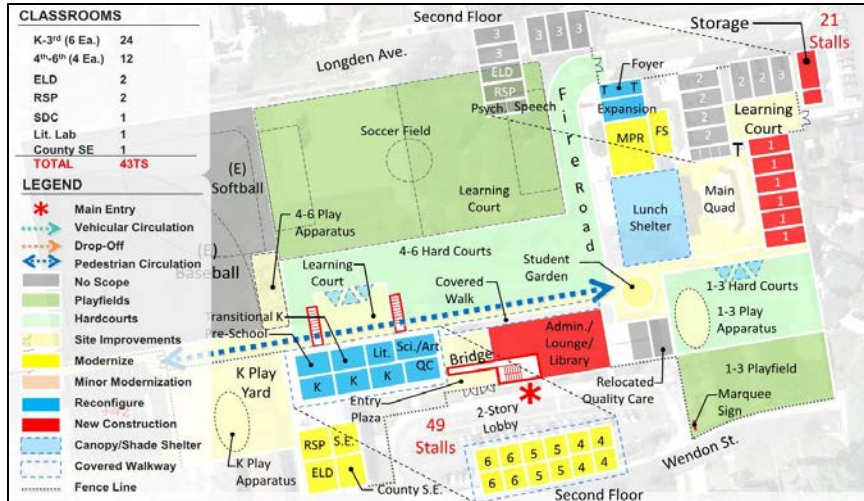
- NTD hired as Architecture firm for this project (Board Approved)
- Meetings with site committee: define Scope of Work, Priorities, Budget, and Schedule
- Master Planning
- Design Development
- Hazardous materials survey report

Schedule

Planning: October 2013 to August 2014
 Construction: August 2014 to August 2015

LONGDEN ELEMENTARY

MASTER PLANNING AND MODERNIZATION



Temple City Unified School District and TELACU Construction Management are currently working on the complete programming/ planning for Longden Elementary

Below is a list of work in progress:

- LPA hired as Architecture firm for this project (Board Approved)
- Meetings with site committee
- Master Planning
- Design Development
- Site Survey

Schedule

Planning: October 2013 to December 2014
 Construction: January 2015 to August 2016



EMPEROR ELEMENTARY

WINDOW REPLACEMENT & ADA UPGRADE PROJECT

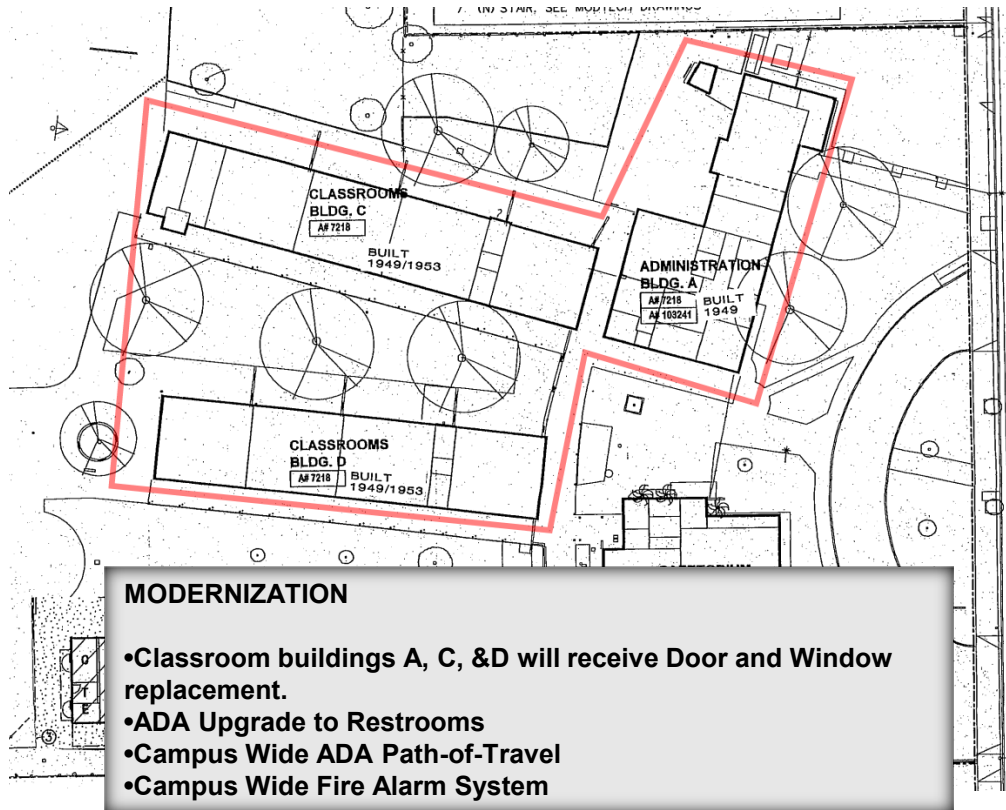
Temple City Unified School District and TELACU Construction Management are currently working on the complete programming/ planning for Emperor Elementary.

Below is a list of work in progress:

- AGC hired as Architecture firm for this project (Board Approved)
- Drawings in DSA and A# has been assigned.
- Hazardous materials survey report

Schedule

Planning:	October 2013 to May 2014
Construction:	June 2014 to August 2014



DR. DOUG SEARS LEARNING CENTER

NEW ADMINISTRATION & CLASSROOM BUILDING

CONSTRUCTION

- Demolition of existing Administration
- Installation of Interim Housing

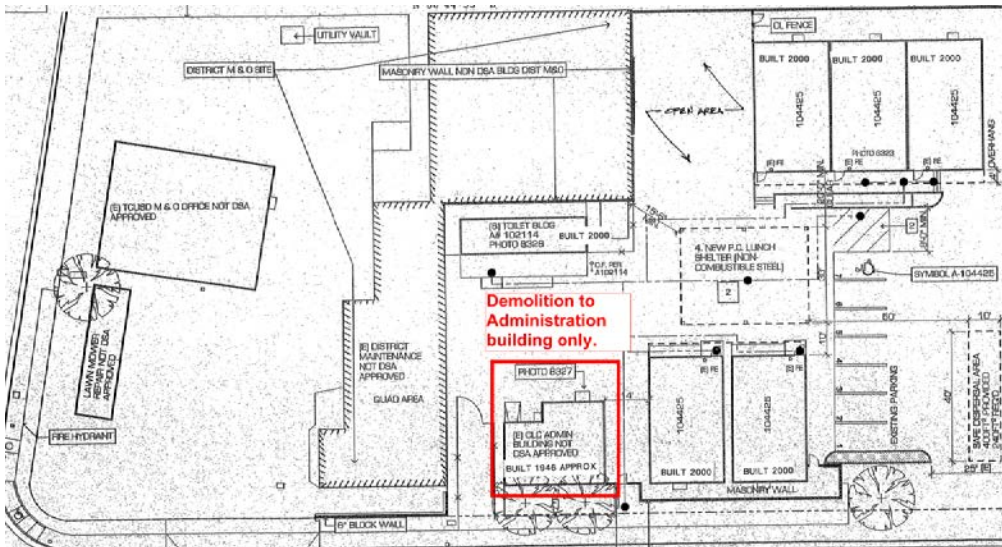
Temple City Unified School District and TELACU Construction Management are currently working on the complete programming/ planning for the Dr. Doug Sears Learning Center.

Below is a list of work in progress:

- NTD hired as Architecture firm for this project (Board Approved)
- Design off of a Piggy-back bid from Silvercreek Industries
- Hazardous materials survey report

Schedule

Planning: October 2013 to June 2014
Construction: June 2014 to August 2014



OAK AVE. INTERMEDIATE

TECHNOLOGY UPGRADE

CONSTRUCTION

- Installation of Interactive White Boards

Temple City Unified School District and TELACU Construction Management currently installed Interactive White Board Systems throughout Oak Ave. Intermediate.

The Technology upgrade is the only project slated for the series A and B Bond issues.



Oak Ave. - CR401



Oak Ave. - CR409

* Temple City Unified School District

Eno Board Costs

Interactive Whiteboard/Technology Project		
Original Contract Amount	\$	1,576,936.30
Net Change Orders:		
Reduction of Scope	\$	(38,586.43)
Unused Allowance	\$	(60,000.00)
Installation of Supplemental whiteboards (including patching and painting)	\$	4,609.25
Additional Wireless access points needed	\$	16,000.00
Five 1 hour substitutes for TCHS	\$	216.95
Replacement Stylus	\$	2,352.22
NET TOTAL CONTRACT	\$	1,501,094.39
Other Measure S – Computers (Some for ENO, some replacements of old computers)	\$	45,471.74

Digital Networks final cost less than bid - \$(75,841.91)

Other Measure S final cost less than budget - \$(14,528.26)

TEMPLE CITY HIGH SCHOOL

