



**TEMPLE CITY UNIFIED SCHOOL DISTRICT  
Measure S: Citizens' Oversight Committee**

**Meeting No. 04**

**Date:** July 8, 2014

**Time:** 5:30 PM

**Location:** Temple City High School - Senate Room

**ATTENDEES**

**COC Members:**

Steven Tyre (ST)

Lucy Liou (LL)

Wil McKnight (WM)

Cynthia Vance (CV)

Gina Aparicio (GA)

**Support Staff:**

Kathy Perini (KP)

Daniel Rodriguez (DR)

Octavio Nava (ON)

Kwok Su (KS)

Betty Hanson (BH)

Tarana Alam (TA)

Hamid Yosafi (HY)

Temple City Unified School District

TELACU Construction Management

TELACU Construction Management

TELACU Construction Management

California Financial Services

California Financial Services

California Financial Services

**Members of the Public:**

Ken Knollenberg

**COC Members Absent:**

Sherry Goin

---

**Minutes prepared by:** Daniel Rodriguez, TELACU Construction Management

**Note:** If there are important errors or omissions, please note them so they can be corrected in subsequent reports and documents.

---

The meeting was opened at 5:35 pm in the Senate Room at Temple City High School (TCHS).

**1. Call to Order:**

The meeting was called to order by Steven Tyre (Chairperson)

**2. Roll Call:**

Steven Tyre: Present

Sherry Goin: Absent

Lucy Liou: Present

Will McKnight : Present

Cynthia Vance: Present

Gina Aparicio: Present

#### **4. Introduction and Welcome**

- 4.1 Kathy Perini, Superintendent Introduction

#### **5. Public Comments**

- 5.1 No Comments

#### **6. Approval(s)**

- 6.1 Action Item: It is recommended that the Committee approve the agenda as presented. (Motion approved 5-0)
- 6.2 Action Item: It is recommended that the Committee approve the COC Meeting Minutes from April 22, 2014. (Motion approved 5-0)

#### **7. New Business**

- 7.1 TCM & District toured the 2 projects on site that are currently under construction, the Phase 0 (Central Plant & Demolition) and the Interim Housing.
- 7.2 (BH) & (TA) from California Financial Services went over Budget tracking and Bond Funding (See Attached). (BH) discussed the possibility of future state funding that the District is entitled to and will be applying for.
- 7.3 (DR) discussed Bond Program and Construction Update. (See Attached)

#### **8. Establish COC Meeting Dates**

- 8.1 The next meeting will be in three months and will be meeting at TCHS – Senate Room on Thursday 10/09/14 at 5:30pm.

#### **9. Future Items**

- 9.1 (ST) requested information on student enrollment.
- 9.2 (WM) requested information regarding safety reports, accidents, lost time, and any financial impacts, etc.

#### **10. Adjournment**

- 10.1 The meeting was adjourned at 6:53 pm.

**Distribution:** All Present  
Board of Education

# TEMPLE CITY UNIFIED SCHOOL DISTRICT

## 2012 General Obligation Bond Authorization

### Measure S



**Citizen's Oversight  
Committee Report**

**July 8, 2014**

## MEASURE S - 2013 SERIES ESTIMATED PROJECT BUDGETS & SCHEDULE

No.	District Goal Number	District Project Name	2013 Series A Estimated Budget	Current Project Phase	Estimated Project Start Date	Project Completion Date
1	0010000	Cloverly Elementary School	\$3,637,666.00	Planning & Construction	August 2014	August 2015
2	0020000	Emperor Elementary School	\$1,656,506.00	Windows	June 2015	August 2015
3	0030000	La Rosa Elementary School	4,217,805.00	Planning & Construction	August 2014	August 2015
4	0040000	Longden Elementary School	2,089,694.00	Planning & Construction	June 2015	August 2016
5	0050000	Oak Avenue Intermediate	377,515.00	Technology	November 2013	February 2014
6	0060000	Temple City High School - Phase 1A	22,864,184.00	Planning & Construction	August 2014	August 2016
7	0070000	Doug Sears Learning Center	510,738.00	Planning & Construction	Fall 2014	TBD
8	_____	Series B Projects	4,264,056.35	N/A	N/A	N/A
COMBINED BUDGET ESTIMATES:			<u>\$39,618,164.35</u>			

### 0010000-92100 - Cloverly Elementary School Modernization

No.	Contractor	Trade	Contracted/ Encumbered	Amount Paid	Remaining Balance
1	Aztec Technology	Equipment Costs	\$3,569.75	\$0.00	\$3,569.75
2	California Financial Services	Project Planning & Support	5,200.00	(2,340.00)	2,860.00
3	Digital Networks Group	Interactive WB Systems	66,775.68	(61,805.77)	4,969.91
4	DSA	Plan Check Fees	13,000.00	(13,000.00)	0.00
5	Hunsaker & Associates	Preliminary Tests	3,436.00	(2,500.00)	936.00
6	NTD Architecture	Architect Fees	281,153.70	(171,494.76)	109,658.94
7	Sierra Environmental	Preliminary Tests	5,200.00	(5,198.00)	2.00
8	TELACU Construction Management	Construction & Program Management	210,600.00	(63,166.46)	147,433.54
		<b>PROJECT TOTAL:</b>	<b>\$588,935.13</b>	<b>(\$319,504.99)</b>	<b>\$269,430.14</b>

### 0020000-92200 - Emperor Elementary School Modernization

No.	Contractor	Trade	Contracted/ Encumbered	Amount Paid	Remaining Balance
1	AGC Design Concept, Inc.	Architect Fees	\$52,455.00	(\$30,858.24)	\$21,596.76
2	California Financial Services	Project Planning & Support	1,100.00	(495.00)	605.00
3	Digital Networks Group	Interactive WB Systems	300,093.56	(266,067.86)	34,025.70
4	DSA	Plan Check Fees	8,850.00	(8,850.00)	0.00
5	Leath Construction	Construction Costs	4,989.00	(4,989.00)	0.00
6	Sierra Environmental	Preliminary Tests	3,000.00	(3,000.00)	0.00
7	TELACU Construction Management	Construction & Program Management	44,550.00	(13,362.14)	31,187.86
		<b>PROJECT TOTAL:</b>	<b>\$415,037.56</b>	<b>(\$327,622.24)</b>	<b>\$87,415.32</b>

### 0030000-92300 - La Rosa Elementary School Modernization

No.	Contractor	Trade	Contracted/ Encumbered	Amount Paid	Remaining Balance
1	Aztec Technology	Equipment Costs	\$4,114.75	\$0.00	\$4,114.75
2	California Financial Services	Project Planning & Support	6,000.00	(2,722.50)	3,277.50
3	Digital Networks Group	Interactive WB Systems	153,526.02	(136,840.68)	16,685.34
4	DSA	Plan Check Fees	16,660.00	(15,700.00)	960.00
5	Hunsaker & Associates	Preliminary Tests	3,436.00	(2,500.00)	936.00
6	NTD Architecture	Architect Fees	325,603.20	(198,617.95)	126,985.25
7	Sierra Environmental	Preliminary Tests	5,200.00	(5,188.00)	12.00
8	TELACU Construction Management	Construction & Program Management	245,025.00	(73,019.79)	172,005.21
		<b>PROJECT TOTAL:</b>	<b>\$759,564.97</b>	<b>(\$434,588.92)</b>	<b>\$324,976.05</b>

### 0040000-92400 - Longden Elementary School Modernization

No.	Contractor	Trade	Contracted/ Encumbered	Amount Paid	Remaining Balance
1	California Financial Services	Project Planning & Support	\$3,000.00	(\$1,350.00)	\$1,650.00
2	Digital Networks Group	Interactive WB Systems	162,345.12	(143,314.87)	19,030.25
3	Guida Surveying, Inc.	Preliminary Tests	14,680.00	(14,680.00)	0.00
4	LPA, Inc.	Architect Fees	1,038,354.00	(128,486.02)	909,867.98
5	TELACU Construction Management	Construction & Program Management	121,500.00	(36,442.18)	85,057.82
6	Universal Reprographics, Inc.	Advertising	221.82	0.00	221.82
7	Util-Locate, Inc	Preliminary Tests	8,850.00	0.00	8,850.00
		<b>PROJECT TOTAL:</b>	<b>\$1,348,950.94</b>	<b>(\$324,273.07)</b>	<b>\$1,024,677.87</b>

### 0050000-92700 - Oak Avenue Intermediate School

No.	Contractor	Trade	Contracted/ Encumbered	Amount Paid	Remaining Balance
1	California Financial Services	Project Planning & Support	\$550.00	(\$247.50)	\$302.50
2	Digital Networks Group	Interactive WB Systems	387,258.44	(342,682.48)	44,575.96
3	TELACU Construction Management	Construction & Program Management	22,275.00	(8,568.82)	13,706.18
4	Time & Alarm Systems	Printing Charges	4,930.00	0.00	4,930.00
		<b>PROJECT TOTAL:</b>	<b>\$415,013.44</b>	<b>(\$351,498.80)</b>	<b>\$63,514.64</b>

### 0070000-92600 - Doug Sears Learning Center

No.	Contractor	Trade	Contracted/ Encumbered	Amount Paid	Remaining Balance
1	California Financial Services	Project Planning & Support	\$750.00	(\$337.50)	\$412.50
2	Digital Networks Group	Interactive WB Systems	49,453.41	(44,756.64)	4,696.77
3	DSA	Plan Check Fees	3,600.00	(3,600.00)	0.00
4	NTD Architecture	Architect Fees	40,000.00	(13,597.50)	26,402.50
5	Sierra Environmental	Preliminary Tests	3,050.00	(1,880.00)	1,170.00
6	Silver Creek	Construction Costs	258,179.72	0.00	258,179.72
7	TELACU Construction Management	Construction & Program Management	30,375.00	(9,110.55)	21,264.45
8	Universal Reprographics, Inc.	Advertising	221.82	0.00	221.82
		<b>PROJECT TOTAL:</b>	<b>\$385,629.95</b>	<b>(\$73,282.19)</b>	<b>\$312,347.76</b>

# 0060000A-92500 - Temple City High School Phase 1A

No.	Contractor	Trade	Contracted/ Encumbered	Amount Paid	Remaining Balance
1	AAon, Inc.	Construction Costs	\$184,300.00	\$0.00	\$184,300.00
2	Aztec Technology	Equipment Costs	8,122.68	(8,122.68)	0.00
3	California Financial Services	Project Planning & Support	33,400.00	(14,007.50)	19,392.50
4	Cor-O-Van Moving & Storage	Moving & Storage	6,955.90	0.00	6,955.90
5	Custom Mechanical Sales	Construction Costs	171,000.00	0.00	171,000.00
6	Digital Networks Group	Interactive WB Systems	500,778.57	(442,715.76)	58,062.81
7	Fast-Track Construction	Interim Housing	14,850.00	(14,850.00)	0.00
8	Guida Surveying, Inc.	Prelimianry Tests	39,980.00	(37,700.00)	2,280.00
9	Home Depot	Maintenance Supplies	222.83	(222.83)	0.00
10	JJS Consulting	District Standards - Hardware	1,500.00	(1,500.00)	0.00
11	LPA, Inc.	Architect Fees	2,435,040.00	(384,179.51)	2,050,860.49
12	Mary Jo King	Supplies	18.53	(18.53)	0.00
13	Mccullah Fence Company	Interim Housing	2,410.00	0.00	2,410.00
14	Ninyo & Moore	Prelimianry Tests	36,754.00	(36,754.00)	0.00
15	Orbach, Huff & Suarez, LLP	Legal Fees	62,712.50	(31,503.00)	31,209.50
16	Pasadena Star News	Advertisement	4,571.64	(493.76)	4,077.88
17	Placeworks	Prelimianry Tests	40,000.00	0.00	40,000.00
18	Registrar-Recorder/County Clerk	Advertisement	25,231.40	(25,231.40)	0.00
19	Sam's Club Direct	Supplies	32.81	(32.81)	0.00
20	Sierra Environmental	Prelimianry Tests	5,600.00	(5,573.00)	27.00
21	Smitty's Signworks	Advertisement	678.90	(678.90)	0.00
22	TELACU Construction Management	Construction & Program Management	1,322,325.00	(395,196.69)	927,128.31
23	Time & Alarm Systems	Printing Charges	4,650.00	0.00	4,650.00
24	Touchboards	Technology Costs	2,029.52	(2,029.52)	0.00
25	Universal Reprographics, Inc.	Advertising	535.74	0.00	535.74
26	U.S. Bank Corporate	Technology Costs	287.76	(148.24)	139.52
27	Util-Locate, Inc	Prelimianry Tests	24,000.00	(24,000.00)	0.00
		<b>PROJECT TOTAL:</b>	<b>\$4,927,987.78</b>	<b>(\$1,424,958.13)</b>	<b>\$3,503,029.65</b>



## 2012 MEASURE S G.O. BOND ELECTION

### POTENTIAL STATE GRANT FUNDING

The Temple City Unified School District will make every effort to augment its Measure S G.O. Bonds with future State eligible grants. Set forth below are estimated State modernization grant funding amounts that the District may be eligible for under the State's School Facility Program ("SFP"). The estimated timeline for the receipt of these funds is expected in the 2015-2016 Fiscal Year or beyond upon passage of a future State school bond measure and the District's ability to meet the State's required funding criteria.

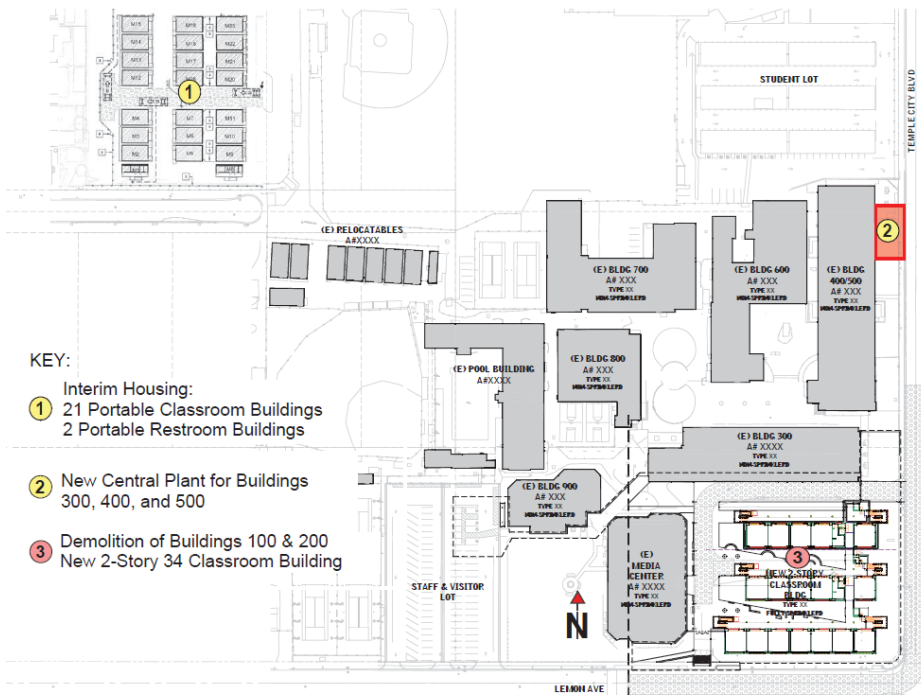
No.	School Name	Potential State Grant Amount	District Share of Project	Total Project Amount
1	Cloverly Elementary	\$1,313,148.87	\$875,432.58	\$2,188,581.45
2	La Rosa Elementary	1,514,261.76	1,009,507.84	2,523,769.60
3	Longden Elementary	3,032,466.91	2,021,644.61	5,054,111.52
4	Oak Avenue Intermediate	1,963,808.22	1,309,205.48	3,273,013.70
5	Dr. Doug Sears Learning Center	185,497.89	123,665.26	309,163.15
6	Temple City High School	<u>7,168,440.52</u>	<u>4,778,960.35</u>	<u>11,947,400.87</u>
TOTAL ESTIMATED STATE GRANTS:		\$15,177,624.17	\$10,118,416.11	\$25,296,040.28

# TEMPLE CITY HIGH SCHOOL

## 2-Story Classroom Building/Interim Housing/Utility Relocation & Demolition

### Current Phase Scope

- Interim Housing
- Phase 0 – Central Plan, Utility Relocation, and Building Demolition



### Current Phase Status Update

- The Interim Housing Project is in progress. The 21 portable classroom buildings and 2 portable restroom buildings have been set. The underground utilities to the buildings are in progress. The project is scheduled to be complete on August 15, 2014.
- The Phase 0 (Central Plant & Demolition) Project is in progress. The underground utility relocation is in progress as well as the demolition of the existing boiler and chiller in preparation for the installation of the new boiler and chiller. The project is scheduled to be complete on August 15, 2014.
- The hazardous materials abatement project for Buildings 100 & 200 has bid and been awarded. The work is scheduled to begin on July 8, 2014 and will be complete for the demolition of the buildings which will begin on August 4, 2014.

# CLOVERLY ELEMENTARY SCHOOL

## Modernization Project

### Current Phase Scope

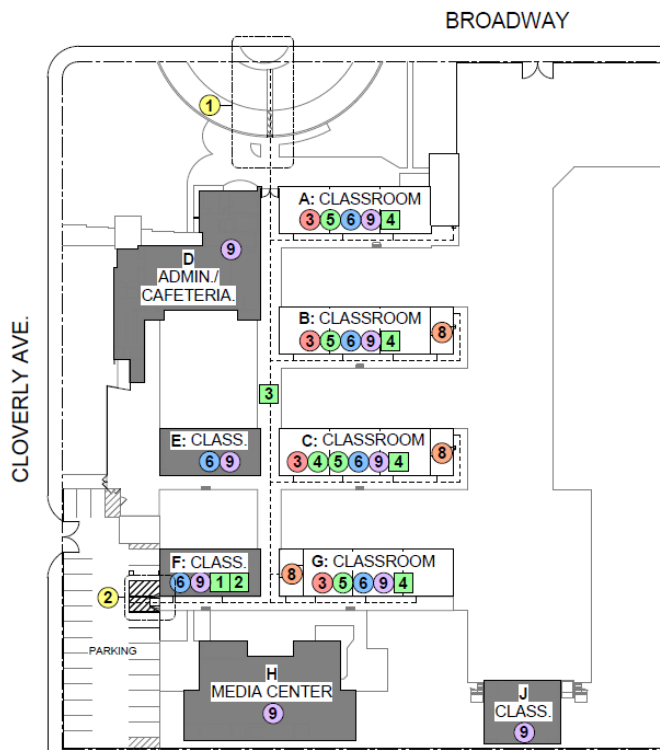
- Modernize 4 Classroom Buildings (13 Classrooms)

#### LEGEND:

---- Path of Travel (P.O.T.)

#### KEY:

- ADA sitework:**
- ① Paving at P.O.T.
  - ② Accessible parking
  - ③ HVAC replacement
  - ④ Roofing replacement
  - Window replacement
  - ⑤ New ACT ceiling & lighting
  - New VCT flooring & wall paint
  - ⑥ Technology package
  - New marker boards
  - ⑧ Restroom upgrade
  - ⑨ Campus-wide fire alarm upgrade
- ALTERNATES:**
- ① Window replacement at Bldg. F
  - ② HVAC replacement at Bldg. F
  - ③ Paint covered walkway
  - ④ Paint building exterior



### Current Phase Status Update

- The drawings have been submitted to DSA for approval.
- TELACU continues preparing the bid packages and will be completing the constructability review once the DSA submittal sets have been completed.

# LA ROSA ELEMENTARY SCHOOL

## Modernization Project

### Current Phase Scope

- Modernize 2 Classroom Buildings (12 Classrooms) and New Lunch Shelter

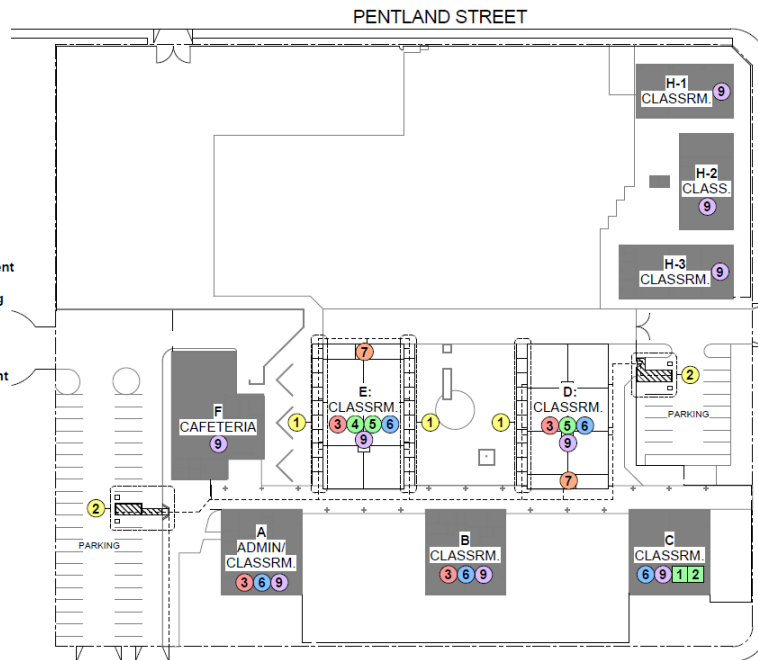
#### LEGEND:

---- Path of Travel (P.O.T.)

#### KEY:

- ADA sitework:
  - ① Paving at P.O.T.
  - ② Accessible parking
- ③ HVAC replacement
- ④ Roofing replacement
- Door & window replacement
- New ACT ceiling & lighting
- ⑤ New VCT flooring & wall paint
- Sink & cabinet replacement
- ⑥ Technology package
- New marker boards
- ⑦ Restroom upgrade
- ⑧ Campus-wide fire alarm upgrade

- #### ALTERNATES:
- ① 1 - Roof replacement at Bldg. C
  - ② 2 - HVAC replacement at Bldg. C



### Current Phase Status Update

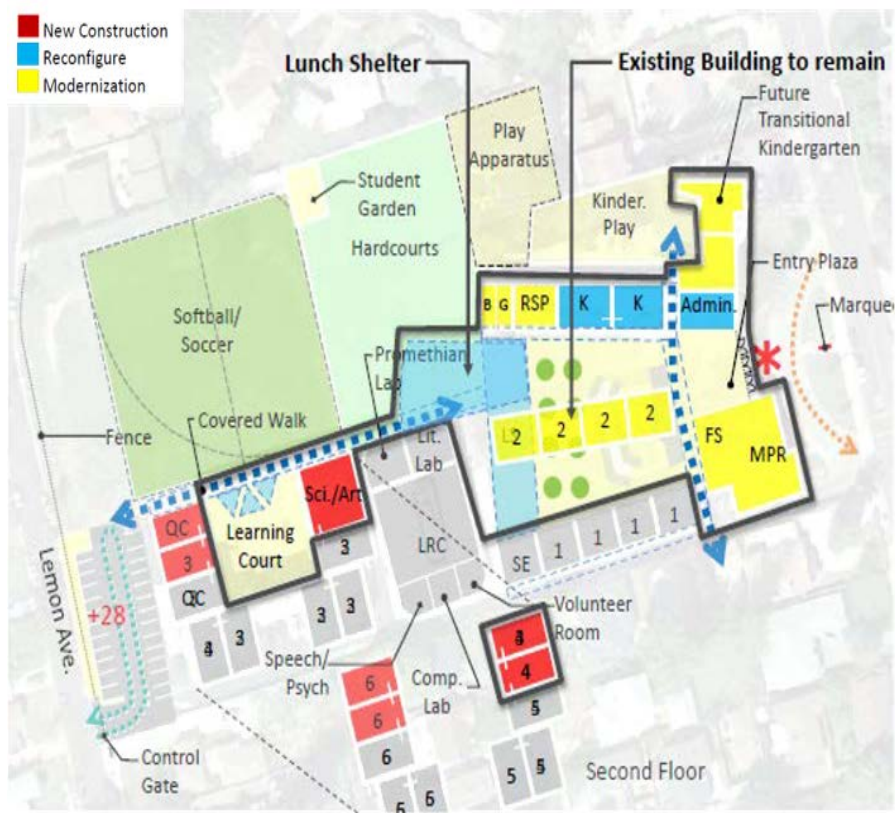
- The drawings have been submitted to DSA for approval.
- TELACU continues preparing the bid packages and will be completing the constructability review once the DSA submittal sets have been completed.

# EMPEROR ELEMENTARY SCHOOL

## Window Replacement & Fire Alarm Upgrades

## Current Phase Scope

- **Window Replacement and ADA Upgrades.**



## Current Phase Status Update

- Drawings are still in DSA and have been reviewed by Structural. Access Compliance & Fire/Life/Safety is still pending.
- This project will be completed during the summer of 2015.

# DR. DOUG SEARS LEARNING CENTER

## New Administration & Classroom Building

---

### Current Phase Scope

- New Administration & Classroom Building and related site work



### Current Phase Status Update

- Per correspondence from DSA, their review is in progress.
- Temporary Housing options have been finalized and the project will begin once DSA approval is received.

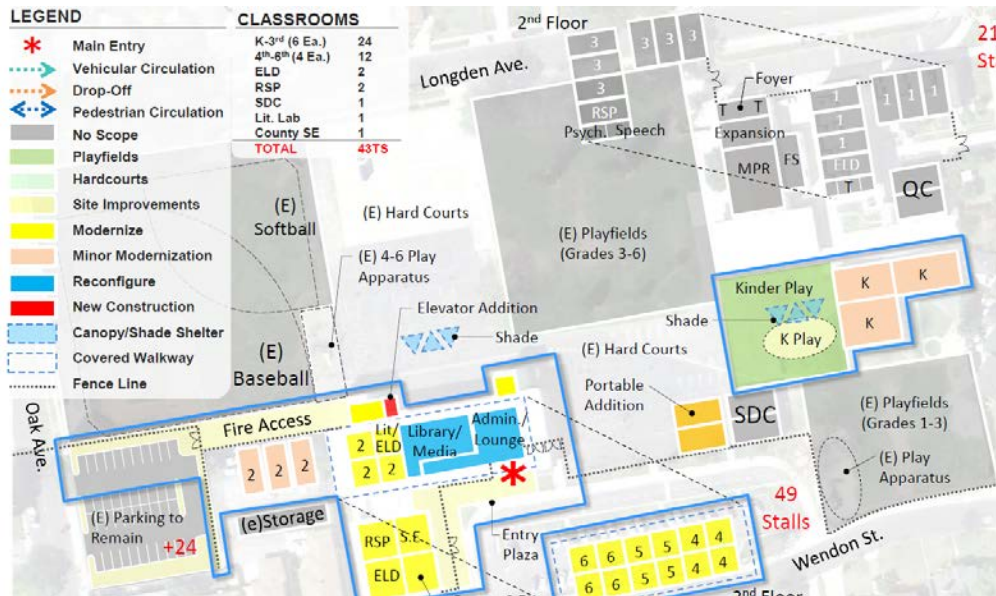


# LONGDEN ELEMENTARY SCHOOL

## Modernization and Site Improvements

### Current Phase Scope

- Modernize 2-Story Classroom Building & Kindergarten Classrooms



### Current Phase Status Update

- The District and TELACU Construction Management have met with the site to discuss the re-scope of the project in an effort to reallocate and establish a budget to another site that does not have a modernization in the first 2 bond issues.
- The Architect (LPA, Inc.) is continuing with the design process based on the input from the Site Committee.