



TEMPLE CITY UNIFIED SCHOOL DISTRICT
CITIZENS' OVERSIGHT COMMITTEE
MEETING AGENDA
JULY 8, 2014, 5:30 PM
Temple City High School Senate Room
(Posted July 3, 2014)

1. Call to Order

2. Roll Call

- 2.1 Citizens' Oversight Committee Members
 - Steven Tyre, Chairperson- 2 Year Term
 - Sherry Goin, Vice Chairperson- 2 Year Term
 - Lucy Liou- 2 Year Term
 - Cynthia Vance- 2 Year Term
 - Gina Aparicio- 1 Year Term
 - Wil McKnight- 1 Year Term

3. Approval(s)

- 3.1 Action Item: It is recommended that the Committee approve the agenda as presented.
- 3.2 Action Item: It is recommended that the Committee approve the COC Meeting Minutes from April 22, 2014.

4. Statements

- 4.1 Public statements not related to agenda items.

5. Introduction and Welcome (Kathy Perini)

6. New Business

- 6.1 Bond Program Budget Overview: California Financial Services will present a bond program overview and a bond program budget overview.
- 6.2 Bond Program Overview and Programming Update: Daniel Rodriguez of TELACU Construction Management will present an update of the planning process of the Bond Program of each campus.

7. Information Item

8. Future Items

9. Adjournment



**TEMPLE CITY UNIFIED SCHOOL DISTRICT
Measure S: Citizens' Oversight Committee**

Meeting No. 3

Date: April 22, 2014

Time: 5:30 PM

Location: Temple City High School- Senate Room

ATTENDEES

COC Members:

Steven Tyre (ST)
Sherry Goin (SG)
Lucy Liou (LL)
Wil McKnight (WM)
Cynthia Vance (CV)
Gina Aparicio (GA)

Support Staff:

Kathy Perini (KP)	Temple City Unified School District
Dale Shaffer (DS)	Temple City Unified School District
Daniel Rodriguez (DR)	TELACU Construction Management
Octavio Nava (ON)	TELACU Construction Management
Kwok Su (KS)	TELACU Construction Management
Betty Hanson (BH)	California Financial Services
Tarana Alam (TA)	California Financial Services
Hamid Yosafi (HY)	California Financial Services

Minutes prepared by: Kwok Su, TELACU Construction Management

Note: If there are important errors or omissions, please note them so they can be corrected in subsequent reports and documents.

The meeting was opened at 5:30 pm in the Senate Room at Temple City High School (TCHS).

1. Call to Order:

The meeting was called to order by Steven Tyre (Chairperson)

2. Pledge of Allegiance

3. Roll Call:

Steven Tyre: Present
Sherry Goin: Present
Lucy Liou: Present
Will McKnight : Present
Cynthia Vance: Present
Gina Aparicio: Present

4. Introduction and Welcome

- 4.1 Kathy Perini, Acting Superintendent Introduction

5. Public Comments

- 5.1 No Comments

6. Approval(s)

- 6.1 Action Item: It is recommended that the Committee approve the agenda as presented. (Motion approved 6-0)
- 6.2 Action Item: It is recommended that the Committee approve the COC Meeting Minutes from January 21, 2014. (Motion approved 6-0)

7. New Business

- 7.1 TCM & District walked COC Members around TCHS to identify the upcoming New 2 Story building and Interim Housing
- 7.2 (BH) & (TA) from California Financial Services went over Budget tracking and Bond Funding. (See Attached)
- 7.3 (DR) discussed Bond Program and Construction Update. (See Attached)

8. Establish COC Meeting Dates

- 8.1 Next meeting will be in three months and will be a meeting at Temple City High School – Senate Room on Tuesday 7/8/14 at 5:30pm.

9. Future Items

- 9.1 None

10. Adjournment

- 10.1 The meeting was adjourned at 7:30 pm.

TEMPLE CITY UNIFIED SCHOOL DISTRICT

2012 General Obligation Bond Authorization

Measure S



**Citizen's Oversight
Committee Report**

April 22, 2014

MEASURE S - 2013 SERIES ESTIMATED PROJECT BUDGETS & SCHEDULE

No.	District Goal Number	District Project Name	2013 Series A Estimated Budget	Current Project Phase	Estimated Project Start Date	Project Completion Date
1	0010000	Cloverly Elementary School	\$3,637,666.00	Planning & Construction	August 2014	August 2015
2	0020000	Emperor Elementary School	\$1,656,506.00	Windows	June 2015	August 2015
3	0030000	La Rosa Elementary School	4,217,805.00	Planning & Construction	August 2014	August 2015
4	0040000	Longden Elementary School	2,089,694.00	Planning & Construction	June 2015	August 2016
5	0050000	Oak Avenue Intermediate	377,515.00	Technology	November 2013	February 2014
6	0060000	Temple City High School - Phase 1A	22,864,184.00	Planning & Construction	August 2014	August 2016
7	0070000	Doug Sears Learning Center	510,738.00	Planning & Construction	Fall 2014	TBD
8	_____	Series B Projects	4,264,056.35	N/A	N/A	N/A
COMBINED BUDGET ESTIMATES:			<u>\$39,618,164.35</u>			

0010000-92100 - Cloverly Elementary School Modernization

No.	Contractor	Trade	Contracted/ Encumbered	Amount Paid	Remaining Balance
1	California Financial Services	Project Planning & Support	\$5,200.00	(\$2,340.00)	\$2,860.00
2	Digital Networks Group	Interactive WB Systems	66,775.68	(53,146.87)	13,628.81
3	DSA	Plan Check Fees	13,000.00	0.00	13,000.00
4	Hunsaker & Associates	Prelimianry Tests	2,500.00	0.00	2,500.00
5	NTD Architecture	Architect Fees	281,153.70	(56,230.75)	224,922.95
6	Sierra Environmental	Prelimianry Tests	5,200.00	0.00	5,200.00
7	TELACU Construction Management	Construction & Program Management	210,600.00	(41,688.30)	168,911.70
PROJECT TOTAL:			\$584,429.38	(\$153,405.92)	\$431,023.46

0020000-92200 - Emperor Elementary School Modernization

No.	Contractor	Trade	Contracted/ Encumbered	Amount Paid	Remaining Balance
1	AGC Design Concept, Inc.	Architect Fees	\$52,455.00	(\$30,858.24)	\$21,596.76
2	California Financial Services	Project Planning & Support	1,100.00	(495.00)	605.00
3	Digital Networks Group	Interactive WB Systems	300,093.56	(257,408.96)	42,684.60
4	DSA	Plan Check Fees	8,850.00	(8,850.00)	0.00
5	Leath Construction	Construction Costs	4,989.00	0.00	4,989.00
6	Sierra Environmental	Prelimianry Tests	3,000.00	0.00	3,000.00
7	TELACU Construction Management	Construction & Program Management	44,550.00	(8,818.68)	35,731.32
PROJECT TOTAL:			\$415,037.56	(\$306,430.88)	\$108,606.68



0030000-92300 - La Rosa Elementary School Modernization

No.	Contractor	Trade	Contracted/ Encumbered	Amount Paid	Remaining Balance
1	California Financial Services	Project Planning & Support	\$6,000.00	(\$2,722.50)	\$3,277.50
2	Digital Networks Group	Interactive WB Systems	153,526.02	(128,181.78)	25,344.24
3	DSA	Plan Check Fees	16,660.00	(1,200.00)	15,460.00
4	Hunsaker & Associates	Preliminary Tests	2,500.00	0.00	2,500.00
5	NTD Architecture	Architect Fees	325,603.20	(65,120.64)	260,482.56
6	Sierra Environmental	Preliminary Tests	5,200.00	0.00	5,200.00
7	TELACU Construction Management	Construction & Program Management	245,025.00	(48,237.30)	196,787.70
PROJECT TOTAL:			\$754,514.22	(\$245,462.22)	\$509,052.00

0040000-92400 - Longden Elementary School Modernization

No.	Contractor	Trade	Contracted/ Encumbered	Amount Paid	Remaining Balance
1	California Financial Services	Project Planning & Support	\$3,000.00	(\$1,350.00)	\$1,650.00
2	Digital Networks Group	Interactive WB Systems	162,345.12	(143,314.87)	19,030.25
3	Guida Surveying, Inc.	Preliminary Tests	14,680.00	(14,680.00)	0.00
4	LPA, Inc.	Architect Fees	1,038,354.00	(64,243.01)	974,110.99
5	TELACU Construction Management	Construction & Program Management	121,500.00	(24,050.94)	97,449.06
PROJECT TOTAL:			\$1,339,879.12	(\$247,638.82)	\$1,092,240.30



0050000-92700 - Oak Avenue Intermediate School

No.	Contractor	Trade	Contracted/ Encumbered	Amount Paid	Remaining Balance
1	California Financial Services	Project Planning & Support	\$550.00	(\$247.50)	\$302.50
2	Digital Networks Group	Interactive WB Systems	387,258.44	(334,023.58)	53,234.86
3	TELACU Construction Management	Construction & Program Management	22,275.00	(5,471.01)	16,803.99
		PROJECT TOTAL:	\$410,083.44	(\$339,742.09)	\$70,341.35

0070000-92600 - Doug Sears Learning Center

No.	Contractor	Trade	Contracted/ Encumbered	Amount Paid	Remaining Balance
1	California Financial Services	Project Planning & Support	\$750.00	(\$337.50)	\$412.50
2	Digital Networks Group	Interactive WB Systems	49,453.41	(36,097.74)	13,355.67
3	DSA	Plan Check Fees	3,600.00	(3,600.00)	0.00
4	NTD Architecture	Architect Fees	40,000.00	(13,597.50)	26,402.50
5	Sierra Environmental	Preliminary Tests	3,050.00	0.00	3,050.00
6	Silver Creek	Construction Costs	258,179.72	0.00	258,179.72
7	TELACU Construction Management	Construction & Program Management	30,375.00	(6,012.74)	24,362.26
		PROJECT TOTAL:	\$385,408.13	(\$59,645.48)	\$325,762.65



0060000A-92500 - Temple City High School Phase 1A

No.	Contractor	Trade	Contracted/ Encumbered	Amount Paid	Remaining Balance
1	Aztec Technology	Equipment Costs	\$8,122.68	(\$3,898.93)	\$4,223.75
2	California Financial Services	Project Planning & Support	33,400.00	(14,007.50)	19,392.50
3	Digital Networks Group	Interactive WB Systems	500,778.57	(442,715.76)	58,062.81
4	Guida Surveying, Inc.	Preliminary Tests	39,980.00	(37,700.00)	2,280.00
5	Home Depot	Maintenance Supplies	222.83	(222.83)	0.00
6	JJS Consulting	District Standards - Hardware	1,500.00	(1,500.00)	0.00
7	LPA, Inc.	Architect Fees	2,435,040.00	(185,108.77)	2,249,931.23
8	Mary Jo King	Supplies	18.53	(18.53)	0.00
9	Ninyo & Moore	Preliminary Tests	25,400.00	(25,400.00)	0.00
10	Orbach, Huff & Suarez, LLP	Legal Fees	62,712.50	(16,607.00)	46,105.50
11	Pasadena Star News	Advertisement	493.76	(493.76)	0.00
12	Registrar-Recorder/County Clerk	Advertisement	25,231.40	(25,231.40)	0.00
13	Sam's Club Direct	Supplies	32.81	0.00	32.81
14	Sierra Environmental	Preliminary Tests	5,600.00	0.00	5,600.00
15	Smitty's Signworks	Advertisement	678.90	(678.90)	0.00
16	TELACU Construction Management	Construction & Program Management	1,322,325.00	(260,958.21)	1,061,366.79
17	Touchboards	Technology Costs	2,210.87	0.00	2,210.87
18	U.S. Bank Corporate	Technology Costs	148.24	0.00	148.24
19	Util-Locate, Inc	Preliminary Tests	24,000.00	(24,000.00)	0.00
		PROJECT TOTAL:	\$4,487,896.09	(\$1,038,541.59)	\$3,449,354.50



2012 MEASURE S G.O. BOND ELECTION

POTENTIAL STATE GRANT FUNDING

The Temple City Unified School District will make every effort to augment its Measure S G.O. Bonds with future State eligible grants. Set forth below are estimated State modernization grant funding amounts that the District may be eligible for under the State's School Facility Program ("SFP"). The estimated timeline for the receipt of these funds is expected in the 2015-2016 Fiscal Year or beyond upon passage of a future State school bond measure and the District's ability to meet the State's required funding criteria.

No.	School Name	Potential State Grant Amount	District Share of Project	Total Project Amount
1	Cloverly Elementary	\$1,313,148.87	\$875,432.58	\$2,188,581.45
2	La Rosa Elementary	1,514,261.76	1,009,507.84	2,523,769.60
3	Longden Elementary	3,032,466.91	2,021,644.61	5,054,111.52
4	Oak Avenue Intermediate	1,963,808.22	1,309,205.48	3,273,013.70
5	Dr. Doug Sears Learning Center	185,497.89	123,665.26	309,163.15
6	Temple City High School	<u>7,168,440.52</u>	<u>4,778,960.35</u>	<u>11,947,400.87</u>
TOTAL ESTIMATED STATE GRANTS:		\$15,177,624.17	\$10,118,416.11	\$25,296,040.28

INTERACTIVE WHITE BOARD/TECHNOLOGY PROJECT

Project Update

- Project is complete and an approval to file a Notice of Completion is on the next Board Agenda

Digital Networks Group, Inc.	
Original Contract Amount	\$1,576,936.30
Change Order No. 01	<u>(87,185.22)</u>
Final Contract Amount	\$1,489,751.08

TEMPLE CITY HIGH SCHOOL

2-Story Classroom Building/Interim Housing/Utility Relocation & Demolition

- This project consists of a new 2-Story, 34 Classroom Building with exterior learning spaces.
- Over-the-Counter approval from DSA for the Interim Housing Project is scheduled for April 30, 2014. Project will be advertised for bidding the week of May 5, 2014.
- Over-the-Counter approval from DSA for the Phase 0-Underground Utility Relocation/Demolition is scheduled for May 8, 2014. The Project will be advertised for bidding the week of May 12, 2014.
- TELACU Construction Management is currently working with the Architect and California Financial Services to prepare the documents that are required to submit for potential State Grants.

CLOVERLY ELEMENTARY SCHOOL

Modernization Project

- Programming and planning is complete.
- The drawings are close to completion and plans will be submitted to DSA for approval on April 30th.
- TELACU Construction Management is currently working with the Architect and California Financial Services to prepare the documents that are required to submit for potential State Grants.

LA ROSA ELEMENTARY SCHOOL

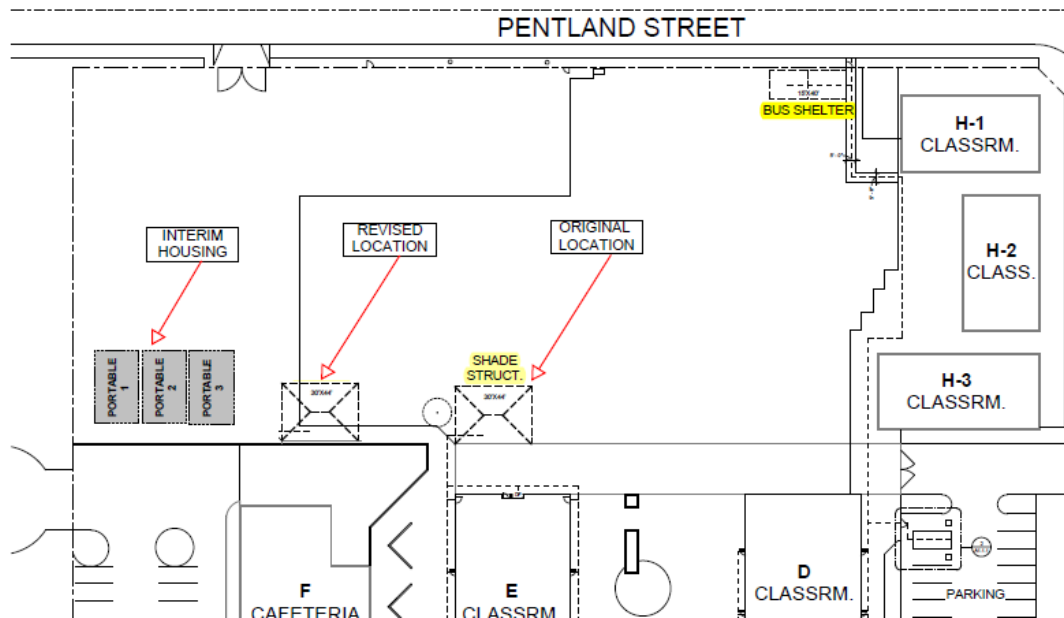
Modernization Project

- Programming and planning is complete.
- The drawings are close to completion and plans will be submitted to DSA for approval on April 30th.
- TELACU Construction Management is currently working with the Architect and California Financial Services to prepare the documents that are required to submit for Potential State Grants.

LA ROSA ELEMENTARY SCHOOL

New Bus Shelter

- A site meeting was conducted with the staff and it was decided to postpone the installation of the lunch shelter until after the modernization project.



- The Architect is looking into larger bus shelter options based on the site request.

EMPEROR ELEMENTARY SCHOOL

Window Replacement & Fire Alarm Upgrades

- Drawings are still in DSA and have been reviewed by Structural. Access Compliance & Fire/Life/Safety is still pending.
- Due to long review times from DSA and material lead times, this project cannot bid this summer and will have to be postponed until Summer 2015.

DR. DOUG SEARS LEARNING CENTER

New Administration & Classroom Building

- Drawings are still in DSA.
- Per correspondence from DSA, their review will begin on May 22, 2014.
- Due to the project still being in DSA, it cannot begin as scheduled.
- Currently looking into options for Temporary Housing for the Administration in order to begin the project once the project is DSA approved.



LONGDEN ELEMENTARY SCHOOL

New Administration/Media Center Building & Modernization

- Programming and planning is complete.
- The schematic design package estimate has been received and is currently \$850K over budget.
- Escalation estimate is approximately \$907K
- Architect & TELACU Construction Management is currently looking into Value Engineering Options in order to meet the budget.
- Value Engineering items will be presented to the Site Staff for their input once they are completed.

LONGDEN ELEMENTARY SCHOOL

New Administration/Media Center Building & Modernization

