

# LEVEL UP

SIXTH FORM PROSPECTUS 2020/21





<b>Introduction</b>	<b>05</b>
<b>Why RHS?</b>	<b>06</b>
<b>Our Alumni Network</b>	<b>08</b>
<b>Cultural &amp; Educational Travel</b>	<b>10</b>
<b>Co-Curricular Activities</b>	<b>12</b>
<b>Sports</b>	<b>14</b>
<b>Sailing</b>	<b>16</b>
<b>Music</b>	<b>18</b>
<b>Drama</b>	<b>20</b>
<b>Bed &amp; Breakfast</b>	<b>22</b>
<b>Facilities</b>	<b>24</b>
<b>Technology</b>	<b>25</b>
<b>The Bigger Picture</b>	<b>26</b>
<b>DoFE / CCF / Divisions</b>	<b>28</b>
<b>RHS+ / RHS Xtra</b>	<b>30</b>
<b>University &amp; Careers</b>	<b>32</b>
<b>Course Directory</b>	<b>35</b>
<b>Elective Subjects</b>	<b>51</b>
<b>What's On</b>	<b>52</b>
<b>Next Steps</b>	<b>53</b>
<b>How To Find Us</b>	<b>54</b>





# LOOK TO THE FUTURE

It's often said that the sixth form is the best time of your school life.

You'll be studying your favourite subjects in a more informal class structure surrounded by like-minded peers. Your relationship with your teachers changes and matures. And there is certainly more freedom to manage how and when you focus on studying.

At RHS, we recognise that work-life balance is essential, which is why we put such an emphasis on co-curricular activities as well as offering some amazing opportunities beyond the classroom to help bring your studies to life. Everything is designed to build a bridge between school and the next stage in your life - be that university, an apprenticeship or a gap year.

We have a long-established reputation for developing leaders across all sorts of fields including medicine, research, finance and technology. This is because we place a huge emphasis on giving everyone the chance to shine during these two years - from responsibilities in our houses, within our sports teams and throughout the whole school. You also have the chance to influence the direction of RHS through our various school councils.

We understand that everyone is an individual and we give you the space to find out who you are and what motivates you.

Our RHS Xtra programme introduces you to the world of work through career networking and specialist talks, alongside interview practice and advice. Help in preparing for university or an apprenticeship is provided by individual tutors and our dedicated sixth form team. It's designed to give you all the support you need to help you make the right choice.

RHS will give you two years of outstanding opportunities and experiences that can launch any career and lead to a lasting network of friends.

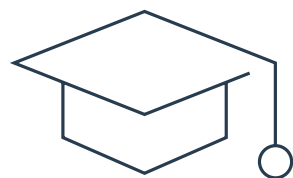
Simon Lockyer  
Headmaster



# WHY RHS?

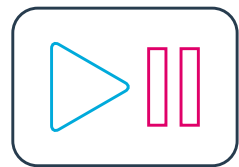
Described as a village within a village, RHS sits in 200 acres of rolling wooded countryside just minutes from the sea. We combine first-class facilities and the highest quality teaching with unique opportunities to see the world.

## GET READY FOR YOUR FUTURE AT RHS



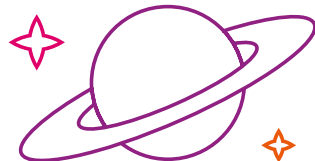
### Academic choice

RHS offers a huge range of A Levels and BTECs and you'll be supported by a dedicated sixth form team and a personal tutor.



### Beyond the classroom

With over 80 clubs to choose from you'll be spoilt for choice.



### Space

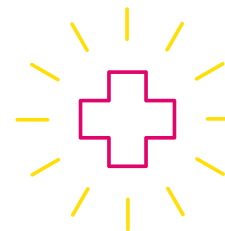
Set in 200 acres of wooded countryside between the River Stour estuary and Alton Water, you can take time out for a breath of fresh air.



### Going green

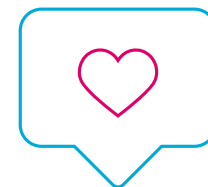
We do our bit for the environment whenever we can – beach cleans, stopping single-use plastics (SUPs) and planting a tree for every new pupil. We've also achieved a Suffolk Gold Carbon Charter Award.

## Why RHS?



### Health

We have our own dentist and health centre at RHS so no need to sit on a long waiting list for an appointment.



### Enjoy yourself

There's something on every night of the week as well as lots of events and activities just for the sixth form.



### Fab food and drink

Enjoy breakfast, three-course lunches and supper as well as free fruit in every house – our food is pretty amazing. We also give our pupils their own reusable water bottle to keep them hydrated throughout the day.

## Why RHS?



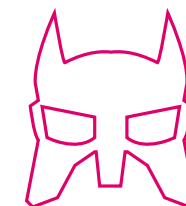
### Technology

We've been named as one of the UK's Top 50 educational institutions who are using technology in an innovative way.



### Get fit

A gym, a strength and conditioning suite, a heated indoor swimming pool plus fitness classes. There's no excuse not to start that fitness regime.



### 24-hour support

If you need someone to talk to, we guarantee 24-hour support. Be it a member of your house staff, our pastoral or health centre team or peer support, your wellbeing is our top priority.



### Sail away

We're one of the top sailing academies in the UK with big expanses of open water right on our doorstep.



### Beyond RHS

Once you leave RHS, you're still important to us and our alumni network is growing all the time, offering career mentoring the world over.



“RHS is full of opportunities. Whether it’s in the classroom, in extracurricular clubs or on the sports field, there are plenty of chances for everyone to find what they’re interested in, which can really help you decide what you want to do in the future.”  
**Thea**

# WORDS FROM THE WISE

**DON'T JUST TAKE OUR WORD FOR IT -**  
HERE ARE SOME OF OUR SIXTH FORMERS  
TALKING ABOUT THEIR TIME AT RHS

“RHS allows people to grow their interests outside of lessons, in a variety of sports and co-curricular activities, whilst teaching them valuable lessons for later life.”  
**Henry**

“I enjoy RHS because of the high-quality music facilities and the multitude of musical opportunities supplied through all the co-curricular activities.”  
**Talan**

“The RHS sixth form is valuable as it offers so much support outside of lessons. There are also many opportunities, so there’s always some way to get involved in school life.”  
**Lily**



## WELCOME TO OUR WORLD

OUR FORMER PUPILS ARE NOW  
WORKING ALL AROUND THE WORLD

Australia	Denmark	Italy	Oman	Thailand
Austria	Finland	Japan	Philippines	Turks and Caicos Islands
Bahrain	France	Kazakhstan	Poland	Uganda
Barbados	Georgia	Kenya	Portugal	Ukraine
Belgium	Germany	Kuwait	Qatar	United Arab Emirates
Bermuda	Gibraltar	Luxembourg	Russia	United States
British Virgin Islands	Greece	Macau	Saudi Arabia	Uzbekistan
Bulgaria	Hong Kong	Malaysia	Serbia	Vietnam
Cambodia	Hungary	Mexico	South Africa	Zambia
Canada	India	Monaco	Spain	
China	Indonesia	Netherlands	Sweden	
Cyprus	Iran	New Zealand	Switzerland	
Czech Republic	Ireland	Nigeria	Taiwan	
	Israel	Norway	Tanzania	

## WHERE COULD RHS TAKE YOU?



**TOM PRATT**  
**GOOGLE, LONDON, UNITED KINGDOM**

With a degree in Business Administration and Management, Tom joined Black & Decker’s graduate scheme, becoming their National Account Manager within five years. His passion was ‘consumer brands’ and Apple was the new player in town. Having researched their recruitment process, Tom applied and got a job which included launching the first iPad and iPhone. He then joined Google in 2014 and is now Chrome OS GTM Lead UK&I, in a department which has grown from 22 staff to over 4,500 globally in four years.

ALUMNI PROFILE



**ABIGAIL SWEENEY**  
**MICROSOFT, SAN FRANCISCO, UNITED STATES**

Abigail joined Microsoft’s Software Engineering Department at 18 through their apprenticeship programme.

Now 22, Abigail is based in San Francisco working as a software engineer with responsibility for the NFL (National Football League). Her role takes her all over the US and even back to the UK on occasion, whenever Wembley Stadium hosts NFL games.

ALUMNI PROFILE



**TONY NICHOLSON**  
**FOUR POINT FITNESS, BEIJING, CHINA**

Tony left RHS to attend Hotchkiss School in Connecticut, US. Learning Chinese convinced him to build a life in China and he moved to a university in provincial Guangdong (Chaozhou), to discover he was the only non-Chinese amongst the 13,000 students. Following this, he transferred to Tsinghua University in Beijing to continue his studies.

He’s now one of China’s top health and fitness coaches, delivering leadership training, motivational workshops and personal coaching. His private client list includes industry leaders and stars of showbiz.

ALUMNI PROFILE



**FIONA CRAIB**  
**TERRAPINN, UNITED ARAB EMIRATES**

Fiona left RHS to study Music at the University of Edinburgh. On graduating, she headed for London where she gained an MA in Cultural and Creative Industries. She returned to RHS to work in our Alumni Relations and Development Office, organising all sorts of fundraising events.

Two years later, she got the job as Conference Manager for Terrapinn, a global events company organising events in the Middle East and North Africa. She was promoted to Head of Conferences and is currently Content Director, overseeing all content and conferences within the investments, payments, fintech, e-commerce, retail, telecoms, rail, education, HR and mining sectors across the Middle East, North Africa and East Africa.

ALUMNI PROFILE





# TRIPS AND TRAVEL FOR THE CURIOUS

WITH MORE THAN 30 TRIPS A YEAR  
GO GLOBAL WITH RHS

From discovering different cultures on Classics trips to Greece and spotting the Big 5 on safari in South Africa to hitting the slopes in Italy or touring America and the Caribbean, our pupils certainly get to travel the world.

This autumn, our sixth formers have the chance to visit South Africa's Shamwari Game Reserve, where wildlife roam under the relentless African sun. Pupils will experience interactive game drives during sunrise and sunset whilst learning about life in a different part of the world.

A Camps International trip to Borneo in summer 2021 will see pupils living and working in a local community, as well as getting the chance to learn to scuba dive. From a scholars' retreat to Gold DofE expeditions to Rannoch Moor in Scotland and CCF exchanges with an American school in Georgia, RHS pupils are offered unique opportunities with memories that last a lifetime.

Whether catching up with Congress on a politics visit to Washington, taking a psychology-based Freudian trip to Vienna or a Modern Foreign Languages stay in France and Spain, you'll find most of our courses give you the chance to get out and about. D&T students visit UK industries and geographers carry out fieldwork in the local area as well as a residential trip to Devon in Year 12.

Our Chapel Choir have flown to New York to perform and have also sung at St Paul's Cathedral and St Martin-in-the-Fields. Sporting pupils have a host of chances to travel, with cricket tours to the Caribbean, rugby tours to South Africa, hockey to Holland, netball to Malta and sailing trips to Australia.

**Make sure your passport is up to date.**



GO  
CLUBBING

AN OUTSTANDING CO-CURRICULAR PROGRAMME  
PROMOTES ALL-ROUND DEVELOPMENT

Whatever you're interested in, there's bound to be someone at RHS who shares your passion and with over 80 clubs and societies to choose from, it's easy to find them. That said, if you want to set up a UFO club or a rubber band orchestra, you're welcome to create one! Our Gospel Choir was set up last year by sixth formers Dan and Rachel whilst some of our pupils created an RHS volleyball team.

Learn to argue with style and substance by joining our Debating Society or prepare for a career in diplomacy with Model United Nations (MUN). Join in with house singing, drama or sports competitions or pay it forward with our Philanthropy Society which organises our school charity fundraising. Make real change by joining our Eco Committee, which played a huge part in RHS switching over from SUP bottles to refillable aluminium ones.

Whether finding a way to relax or an opportunity to become more confident, you'll never be bored at RHS and could discover a whole new passion.



THERE'S A CLUB  
WITH YOUR NAME ON.

Amnesty International  
Art

Backstage Drama

Badminton

Baking

Ballet

Basketball

Big Band

Brass Ensemble

Bubble (school magazine)

Business Enterprise

CAD/CAM

Chamber Choir

Chapel Choir

Chess

Chinese for Beginners

Classical Guitar Ensemble

Classics

Climbing

Coding

Corps of Drums

Cricket

Darts

Debating

Decoupage & Restoration

Design & Make

Eco Committee

Eco-bag making

Ecology

European Schools' Network

Fencing

Film

Fitness Suite

Forum

Girls' Cricket

Girls' Rugby

Gospel Choir

Greek

Guard

Hispanic Cooking

Hockey

Horse Riding

Inventing

Kickboxing

Knitting

Lego Robotics

Marvel Cinematic

Universe Club

Maths Clinics

Miniature Model Painting

Mock Trial

Model United Nations

Music Technology

Musical Theatre Group

Musicianship Surgery

Netball

Northampton Saints

Training

Not So 'Bored' Games Club

Orchestra

Philanthropy

Photography

Psychology

Public Speaking

Racquet ball

Rifle Club

Rock Group

Rugby

RYA First Aid Training

Sailing

Samba

Saxophone Ensemble

School Band

Shakespeare

Squash

STEM

String Ensemble

Swimming

Table tennis

Tennis

Textiles

Theology

Ukulele Club

Video Editing

Volleyball

Young Language Leaders



## SPORT IS FOR EVERYONE AT RHS, WHATEVER YOUR LEVEL

We're really big on sport at RHS – quite literally, we have around 96 acres of fantastic facilities. Whether you aspire to play at elite level, want to reach your peak fitness level or simply want to have fun, the choice is yours. We're lucky to have specialist and experienced sports staff to help you reach your potential and achieve your goals, whatever they are.

It's all about balance, so we plan our sports using a holistic approach, mindful of the academic demands you'll have.

Once a week you'll take part in the sport you've chosen. If you're on a team, there'll be weekend matches together with extra practice sessions and clubs during the week.

Training during the previous term alongside pre-season training is integral to our sports programme, varying from practice sessions to entering tournaments and festivals, perhaps even taking part in a short tour. These may be local, regional or international, providing pupils of all abilities with the opportunity to explore the globe whilst playing the sport they love.

Sports scholarships are available and are awarded based on ability, potential, ambition and dedication. Successful pupils join our Talented Performance Group (TPG) which provides specific training and tailored skills coaching alongside nutritional and well-being advice to help you reach your sporting potential. We have excellent opportunities to develop Olympic pathways for sailing and we also have links with Suffolk and Essex County Cricket, Mavericks Super League Netball, Northampton Saints and Suffolk and Eastern Counties Hockey. If you don't represent a school team at the weekend, you can take part in inter-house leagues and follow an integrated sports programme.



## PERFECTLY PLACED FOR SPORT

**SPORTS INCLUDE ATHLETICS, BASKETBALL, CRICKET, CROSS COUNTRY, HOCKEY, HORSE RIDING, NETBALL, RUGBY, SAILING AND SWIMMING.**

WE HAVE FANTASTIC FACILITIES INCLUDING  
EXTENSIVE PLAYING FIELDS AND SURROUNDING GROUNDS.

**ACCESS TO ALTON WATER FOR SAILING AS WELL  
AS OTHER WATER SPORTS.**

AN ALL-WEATHER SPORTS PITCH, TENNIS AND NETBALL COURTS,  
AN INDOOR MULTIPURPOSE SPORTS HALL, A GYM AND FITNESS SUITE,  
AN INDOOR SWIMMING POOL, SQUASH COURTS,  
A KICKBOXING STUDIO AND OUR OWN 9-HOLE GOLF COURSE.



# CHARTING A SUCCESSFUL FUTURE

We're an RYA recognised training establishment. Our Centre of Excellence for Sailing, based just across from the school at the 400-acre Alton Water reservoir, means we offer unrivalled provision and opportunity for sailing.

Anyone who joins our Sailing Academy can pursue the sport competitively in both fleet and team racing at the school as well as at national and international level. Why not work towards an instructor qualification and take part in weekend sailing expeditions using our fleet of Cornish Shrimpers.

## OUR IMPRESSIVE FLEET INCLUDES:

9 X LASER

4 X 29ER

4 X RS200

2 X WASZP

12 X FIREFLY

4 X CORNISH SHRIMPER 19'

8 X RS FEVA

6 X TOPPER

18 X RS TERA

2 X DRAGONBOATS

## IN ADDITION, THE RHS CANOEING CLUB OWN:

1 X MARAUDER K2

1 X M50 K2

6 X MIRAGE K2

4 X TORQUE K2

2 X TYPHOON K1

1 X PULSAR K1

4 X SIT AND SWITCH OPEN CANOES C2

If you'd like to find out more about sailing as an elective subject at sixth form, follow this QR code:





# MAKING MUSIC

MAKE SOME NOISE IN OUR STATE-OF-THE-ART  
RECORDING STUDIO AND PERFORMANCE SPACES

If you're keen on a musical career, our Music A Level makes sure you're well prepared for entry to music college or university. We have a large and talented team of visiting music teachers (VMTs) who offer one-to-one tuition on a range of instruments, from the piccolo right through to the bagpipes.

Our teaching is supported by a year-long series of academic music lectures and masterclasses from prominent, professional musicians on topics ranging from Elgar's orchestration techniques and Bach's St John Passion to the life of a film composer and the use of computers in new music.

## MUSIC SCHOOL

Opened in 2008, our dedicated Music School is the perfect place to study and explore your passion for music. We have a well-resourced concert venue seating 250, which houses two grand pianos as well as a full selection of orchestral percussion.

Our first-class facilities include an up-to-the-minute music technology suite, a recording studio, three classrooms, a keyboard laboratory, 15 specialist instrumental teaching rooms, a well-stocked departmental library with a new practice pipe organ, and a Bechstein piano in every room.



## MUSIC TECHNOLOGY

We have a purpose-built, three-room music technology suite complete with a recording studio, an iMac room running Logic Pro X and a control booth with a 24 channel Toft mixing console.

## MUSIC SCHOLARSHIPS

Music Scholarships are awarded annually to pupils who demonstrate real talent. If you're interested, come along and meet the Director of Music who'll be happy to talk through the scholarship in more detail.

## SING UP

No matter where your talent or style lies, there's a choir for you:

### Chapel Choir

80-strong choir at the heart of the RHS choral tradition, with four major concerts each year and annual performances at high-profile naval services in St Paul's Cathedral and St Martin-in-the-Fields. Regular appearances in concert venues such as the Royal Albert Hall and international tours to places like Italy, Germany, Malta and New York.

### Chamber Choir

20 hand-picked singers performing a wide repertoire of sacred and secular, classical and contemporary works with frequent concert performances.

We also run a Musical Theatre Group and a Gospel Choir.

## BAND

Renowned 75-strong marching and concert band, dating back 200 years, with unique and entirely pupil-led Corps of Drums, providing drum displays for formal occasions. Elite corps of solo buglers and Junior Corps of Drums.

## ORCHESTRA

A strong string section and symphonic brass, woodwind and percussion.

## ENSEMBLES

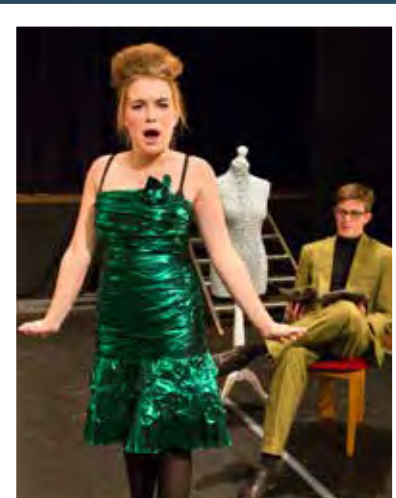
• Big band • Baroque ensemble • Brass ensemble • Flute ensemble • Saxophone ensemble • Intermediate string group • Advanced string group • Barbershop group • Rock/pop workshop • Samba club • Elite fanfare team • Various independent pupil bands • Music technology clubs

We're always open to ideas for new ensembles, so share your passion with your peers.

## CONCERTS

We welcome many world-leading musicians as part of our annual concert series, creating exciting opportunities for our pupils and visitors.





# BE DRAMATIC

## TAKE CENTRE STAGE AT THE ROYAL HOSPITAL SCHOOL

Create memories to last a lifetime - from auditioned, large-cast shows with high production values and stunning visuals, to smaller, pupil-led pieces performed in our intimate studio space. Find the role made for you, be it as the leading light or the lighting operator, director or deputy stage manager.

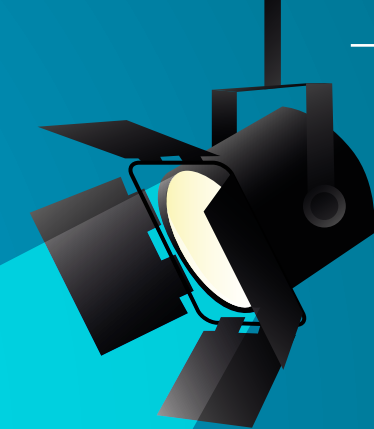
We provide opportunities to work at a high level, creating work supported by our teaching staff, our technician and a number of visiting professionals - actors, directors and theatre-makers - who regularly come to RHS to work with our pupils to put drama centre stage.

In the sixth form, you can join our sixth form theatre company which performs twice a year.

It's made up of pupils choosing to take the BTEC First Award in Performing Arts as an elective subject.

In Year 12, learn about the employment choices available in the industry, plus new ways of creating theatre, how to audition, perform a script and make and perform your own pieces. The course helps develop lots of important skills whether or not you're thinking of a career in the performing arts - it's about building confidence, thinking creatively, working collaboratively and meeting the most intense deadline of all - the opening night of a show!

You don't need any previous experience or skills to join; all you need is a willingness to be part of something special.





# BED &...

## HOME FROM HOME

Our house system is at the heart of RHS and we focus on creating close partnerships between our pupils, staff and parents.

Each house is looked after by a housemaster or housemistress whilst day-to-day life is in the hands of our matrons. Every RHS pupil is assigned a tutor who will mentor their academic progress and co-curricular involvement as well as social development and mental wellbeing.

## BOARDING

Boarding can be full-time, weekly or on a 3-night basis, whilst day pupils can sample a taste of boarding with ad hoc overnight stays. Boarding can be a whole new way of life for some, but our established buddy and peer support system means new pupils settle in quickly.

## SENIOR FLEXI BOARDING HOUSES (YEARS 8 - 12)

Cornwallis (boys) and Howe (girls) offer excellent facilities for those wanting to board on an ad hoc or flexible basis up to 3 nights per week.

## SENIOR BOARDING HOUSES

Full and weekly boarders join one of five boarding houses: Collingwood, Hawke and St Vincent are for boys whilst the two girls' senior houses are Anson and Hood. Each one features social spaces including day rooms (with table tennis and pool tables), kitchens, TV rooms and a house library. Each boarder has their own self-contained workstation and sleeping accommodation. Normally, Year 12s will be in double or single study bedrooms with en-suite.

## SENIOR DAY HOUSES (CO-ED YEARS 8 - 12)

Senior day houses, Raleigh and Drake, include areas for study, comfy common rooms, computer rooms, lockable storage for books and games kit as well as changing facilities. Day pupils may request to stay overnight on an ad hoc basis in Cornwallis or Howe.

## NELSON HOUSE

Nelson is the co-ed house for Year 13, housing boarders and day pupils, with very much a university feel about it. Independence is encouraged with the aim of preparing you for life beyond school. One wing is for girls and the other for boys with central common room areas, kitchens, a laundry room and quiet study rooms for day pupils.

# BREAKFAST

(LUNCH & SUPPER TOO!)

Let's face it, food is one of the most important things in life. Our focus is on creating a delicious menu, cooked from scratch and using the freshest of ingredients.

Our catering team is part of Chartwells - a leading provider of catering services to schools, colleges and universities throughout the UK.

There's a different menu every day and our professional chefs make sure there's a hot and cold option alongside plenty of fresh fruit, vegetables, salads and healthy proteins and carbohydrates.

We also make sure our international pupils are included, so alongside familiar British fare we regularly feature world recipes inspired by Mexico, China, Spain, Italy and Nigeria.

If you have any specific dietary requirements, that's not a problem. Every menu is overseen by an expert team of nutritionists to make sure we're offering a complete and balanced daily diet. Allergens are clearly displayed and there are always options for vegetarians and vegans.

We run regular food events with themed menus and celebrations that include Harvest Day, Burns Night, Chinese New Year and not forgetting Christmas lunch. Every month we celebrate a single vegetable and serve it in six ways as little tasters for everyone. Who knew there was such a thing as an artichoke roll?

Why not get involved in our incredibly busy schedule of events - there are numerous opportunities to work alongside our catering team to learn valuable work and life skills.

You can also be actively involved and have your say on the food we serve by joining the Food Committee.

**So put that on your plate and eat it!**





# FACILITIES

RHS sixth form has all the academic facilities you'll need to thrive independently. We run a Bring Your Own Device (BYOD) scheme in the sixth form, which means you can use your own device on our network. Our teachers are skilled at incorporating technology into all of their lessons, regardless of subject choice.

Each department has dedicated classrooms complete with interactive projectors. Most classrooms have recently been refurbished to reflect the needs of a 21st century education.

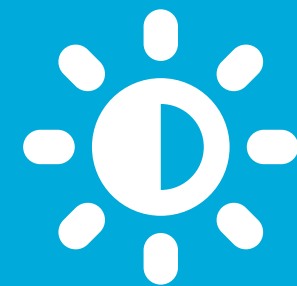
Two dedicated computer suites allow for work on desktop computers and a modern languages room means pupils can practise their conversation skills with our language assistants.

At the academic heart of RHS is the newly refurbished library. This dedicated academic space offers individual study booths with charging facilities and desktop computers, whilst larger tables allow for collaborative work. There's a separate, quiet reading room and two seminar rooms with full whiteboard walls. If you should need a boost, there's also a sixth form coffee machine. The sixth form team are based in the library, allowing you easy and regular access to this dedicated support network.

Our facilities allow the very best of pupils' talents to be showcased. A specialist drama studio is available for rehearsing, studying and performing studio pieces whilst our large assembly hall serves as an ideal base for whole-school drama productions. Mix it up in our Music Technology studio or get cooking in one of our nine kitchen suites in the Food Technology Department.

The Art and Design block is of art college standard with a vast, well-lit space for exhibiting pupils' work. In addition, there are three kilns, etching and relief presses, a darkroom for photography, sewing and knitting machines, welding equipment, two brazing hearths, laser printers, soldering tables, four centre lathes and Fusion 360 CAD software.

THERE'S SO MUCH TO  
**LOVE**



# TECHNOLOGY

Our belief is that technology should facilitate great learning and it's embedded deep into the fabric of how we teach and what we do. It presents powerful opportunities for a dynamic and contemporary education, and for preparing you for life beyond school in the 21st century job market.

We focus our efforts on technologies that support communication and collaboration by providing pupils with the full suite of Microsoft 365 cloud apps and storage. Access to our entire curriculum is available whenever pupils may need it via cloud hosting of our learning resources. Years 7-11 are enrolled into a one-to-one iPad scheme which is extendable to sixth form pupils.

Alongside the Microsoft tools, printing services and network filtering, the IS department provides dedicated IT suites and fixed-point PCs in convenient locations across the entire site.

We provide state-of-the-art media and music technology facilities where you can express your creativity on professional-level equipment. You'll enjoy industry-leading broadband speeds and full Wi-Fi coverage across all our buildings.

We encourage critical thinking by running STEM and computing events that allow pupils to use technology to solve real-world problems. We also invest in developing technological soft skills. Pupils are encouraged to discuss and develop opinions on topics such as fake news, AI, machine learning, digital reputation and are helped to build a professional online presence. Our goal is to equip young people with the skills and attributes to thrive in the digital world.

WE'RE SO COMMITTED TO STAYING AHEAD THAT RHS IS RECOGNISED AS A LEADING SCHOOL FOR ITS USE OF TECHNOLOGY. IN FACT, IN 2019 WE WERE INCLUDED ON A LIST OF 50 EDUCATIONAL INSTITUTIONS WHO USE TECHNOLOGY IN AN INNOVATIVE WAY.



# PAY IT FORWARD

## ENVIRONMENTAL ISSUES, CELEBRATING DIVERSITY AND EQUALITY – OUR SIXTH FORM WITH HEART

Giving back is very much an ethos of RHS and we think an essential part of education is to make an impact on others by donating your time or your talents. We give everyone the chance to help – from getting to know local care home residents and spending social time with them each week, to taking part in whole-day beach-cleaning activities.

We're lucky to be partnered with the Suffolk Community Foundation who suggest where our community's time, energy and money will have the biggest impact locally. Our pupils are proud to be RHS ambassadors and continue to build upon the long-standing relationships established in our region.

When you help other people you experience real relationships, develop leadership opportunities and learn resilience, all of which will support you throughout your life. We also arrange for guest speakers to talk about their work to inspire you and help you think about what you could do next.



## GROW WITH US

We've decided to plant a tree for every new pupil joining the school over the next seven years. Launched at our Open Day in November 2019, the tree planting is part of our new Grow with Us campaign, which also includes a range of initiatives aimed at sustainability and promoting well-being.

Scientists have stated that if 1 trillion trees are planted in the next few years, the amount of carbon in the atmosphere would be reduced by 25% once the trees mature – levels the world has not witnessed for at least a century. RHS hopes its example will encourage other schools to do something similar – if every school in the world – of which there are 3 million – planted 200 trees a year over the next seven years, that would mean over 4 billion trees would be added to the total.



# ECO EFFORTS

The impacts, solutions and uncertainties surrounding climate change are no longer simply a focus for geography lessons or for scientists cooped up in labs – it's discussed in all aspects of our lives, whether debated as part of politics, fed into advertising and media campaigns, considered by inventors, architects and designers, or simply discussed over a coffee with a friend. Climate change is a huge unknown and therefore has potential for big opportunity – a challenge handed largely to your generation.

At RHS we offer you the chance to be part of the pupil-led Eco Committee. Thinking globally, acting locally – making sure the small changes we make have a big impact in the wider world. We have gained recognition for our initiatives in recent years – from our Suffolk Carbon Charter Gold Award to our plastic campaign which made media headlines and resulted in a personal visit from our local MP.

The Eco Committee is led by staff who will encourage you to develop skills in problem-solving, pitching ideas to local companies or demanding answers to questions from big organisations. Alongside this, you'll work both independently and in a team across multiple age groups to find innovative and new ways to reduce our carbon footprint and wider impact on our planet.

The committee provides a unique opportunity to showcase your passion and develop skills which are sought after by universities and employers as well as giving you a much deeper understanding of current world issues.

Today-focused, but future-minded, the Eco Committee is a dynamic group which welcomes like-minded people who are always looking to do things just that little bit differently.







HAVE AN

# ADVENTURE

LEADERSHIP, SELF-ASSURANCE AND CONFIDENCE –  
LIFE SKILLS GUARANTEED AT THE ROYAL HOSPITAL SCHOOL



## DUKE OF EDINBURGH'S GOLD AWARD

Going for a Duke of Edinburgh's Gold Award is no mean feat, which is why only 2% of school leavers are successful. It takes hard work, resilience, good communication skills and teamwork plus a real commitment and a good measure of courage. That's why it's held in such high regard by universities, employers and the armed forces.

RHS is home to a thriving Gold DofE community with a dedicated team of staff to help you navigate your way through the five different sections. The expedition section is particularly exciting and in the past few years we've organised trips to Scotland, Dartmoor, the Lake District, North Wales and Northumberland plus numerous inland waterways and the coast. Pupils have chosen canoes, horses, sailing boats as well as their own feet to achieve the considerable expedition aims.

We have a state-of-the-art strength and conditioning room, cardio suite and kickboxing gym to help you achieve peak condition for the physical section, and a climbing wall, RYA centre and a first-class Music Department to tick off the skills section.

The residential element means living away from the school for five days. Your choices are exhilarating and varied including animal conservation in Kenya, being a ski chalet cook in France, developing medical laboratory skills in Cambridge, tall ships racing along the South Coast, mountain biking in Wales, caving in Lancashire, mountaineering in Scotland and helping with holidays for disabled adventurers, to name but a few.

As if this wasn't enough, upon gaining your award, you'll be invited to St James's or Buckingham Palace where a member of the Royal Family will present you with your coveted Gold Award certificate.

## COMBINED CADET FORCE (CCF)

The CCF offers an exceptional range of challenging and exciting activities for cadets to engage with. It includes sections from the **Royal Navy**, **Royal Marines**, **Army** and **Royal Air Force** with each one having its own specific activities:

**Royal Navy** training focuses on water-based activities including dinghies, powerboats or yachts. You'll visit HM ships at sea as well as establishments on shore where you can receive a variety of training.

**Royal Marines and the Army** are focused on land-based activities such as fieldcraft and minor tactics. Fieldcraft is the ability to live and survive in the outdoors, from camouflage and concealment to building a temporary shelter.

The **Royal Air Force** puts flying to the forefront of your experience, with lots of opportunities to take to the skies in gliders and powered aircraft. You'll start by taking the second seat with an instructor but the ultimate aim is to master a solo flight.

Common to all three are leadership, first aid, STEM activities, access to CVQO-led qualifications, Adventurous Training (AT) with activities including paddle sports, parachuting, mountain biking, mountain walking, rock climbing, sailing, windsurfing, skiing and scuba diving.

## DIVISIONS

RHS has strong links with the Royal Navy and is proud of its seafaring traditions. Taking part in Divisions instils an enormous sense of pride, self-belief and community spirit amongst the whole school as well as celebrating our maritime past.

### WHAT ARE DIVISIONS?

The term 'Divisions' is used by the Royal Navy to describe a formal parade, derived from the days when almost all of the Royal Navy served afloat. Marching on overcrowded, upper decks was impossible so the ships were divided into divisions according to which part of the ship the men worked in. A ship's company would organise themselves by divisions to be addressed by the captain, for example.

At RHS we aren't addressed by a captain but we do carry out Divisions (fondly known as Divvies) on our parade ground. You'll be one of 750 pupils dressed in naval uniform as worn by the modern Royal Navy today, ready to be inspected before marching in front of a military VIP who'll take the salute.

### WHY DOES RHS HAVE DIVISIONS?

Divisions are an important part of the school's heritage and a recognition of its links with our parent charity, Greenwich Hospital. We feel it's vitally important for pupils to recognise that they're part of a great legacy. You literally tread in the footsteps of generations of boys and girls who've gone before you. By doing this, you'll leave footprints for future generations to follow.





LIFE AFTER GRADUATION IS ABOUT MORE THAN EXAM RESULTS

**RHS+ & RHS XTRA PREPARE YOU FOR JUST THAT**



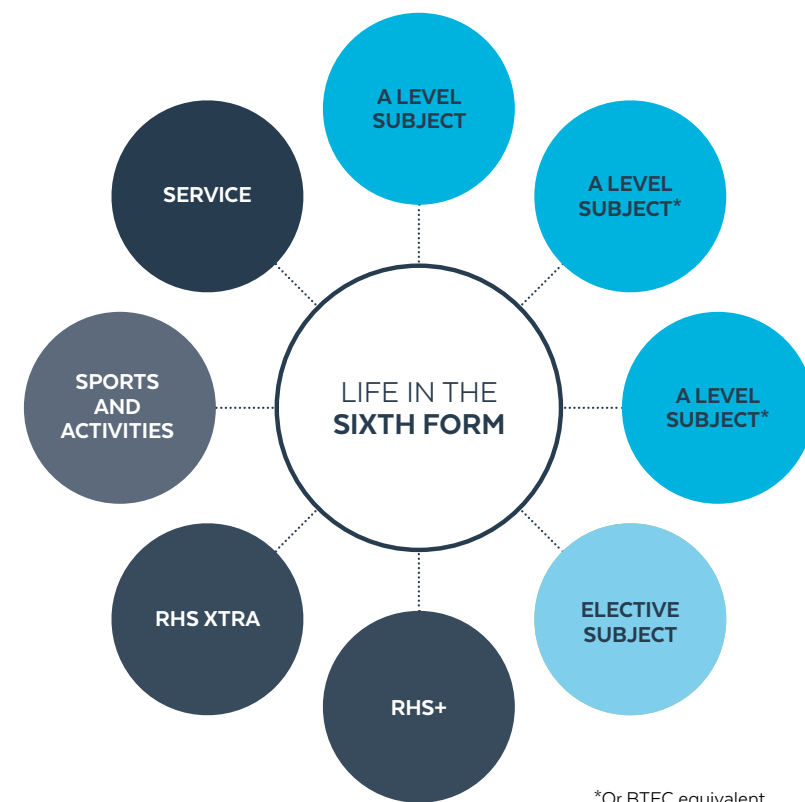
## RHS+

Over-and-above the core curriculum, we've put together a programme for Year 12s aimed at getting them ready for university life and the world of work. You'll take six modules lasting around half a term, with each taking up two periods a fortnight.

The six modules focus on higher education and careers including managing personal finances, healthy eating on a budget, study techniques for the 21st century and communication skills.

## RHS XTRA

On a regular basis, the Head of Sixth Form and Careers organises a series of talks and seminars led by staff and outside experts and covering a wide range of topics. Recently we have enjoyed talks by Josh Coombes, the hairdresser to the homeless, and Fran Williamson, a Paralympic swimmer.



\*Or BTEC equivalent

# #PARTOFRHS

## OUR ALUMNI PROGRAMME

The RHS Association is a community of around 8,000 former pupils throughout the world.

Nominated for a TES award, the alumni programme provides sixth formers with career insights and opportunities, connecting them with our most successful and influential alumni.

Our focus is on our sixth formers because they will soon become alumni themselves. All of them receive Gidge, our alumni magazine, and our in-house team regularly present at sixth form assemblies. There are all sorts of alumni lectures and talks, professional networking events together with career and mentoring opportunities. We've also developed an RHS LinkedIn Careers Network with an active membership of over 2,000 alumni and with which we encourage our sixth formers to connect.

Our flagship speaker series, the Fireside Chats programme, is designed to provide valuable insights from former pupils who are leaders in their field, many working for some of the most well-known brands in the world. The sociable setting sees pupils put questions to entrepreneurs, scientists and leaders of the armed forces, commerce and industry.

Visit iconic industry locations in London with our Professional Networking Programme which gives you the opportunity to discover what it's like to work at Russell Group universities; Google; BORN Group; Killik and Co; Barings, the global investment management firm; and WeWork, to name but a few. You'll meet alumni, listen to talks and make career connections for the future.



## WHERE NEXT?

Every year most of our Year 13s head off to some of the best universities in the country such as Exeter, Newcastle, Nottingham, Bristol and St Andrews.

It can often seem a daunting prospect – where do you begin with an application, what degree should you choose and how do you know which university is right for you?

You'll be supported throughout the application process by your tutor who will help you decide on your university choices and help you to develop the all-important personal statement. You'll get access to Unifrog, an online platform which helps you choose the right university for YOU and provides further guidance on the process.

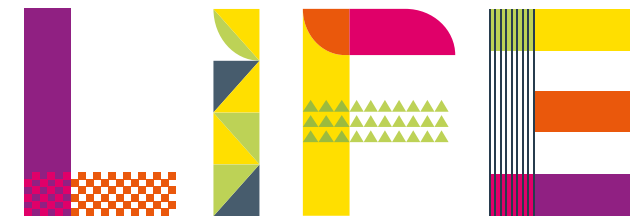
You'll also be encouraged to head off to open days during the Summer term and we regularly attend the University of East Anglia Sixth Form Conference. Pupils applying for Oxbridge receive expert tutoring and guidance and every year we organise visits to both Oxford and Cambridge.

## RHS HAS YOU COVERED

## RECENT GRADUATE DESTINATIONS

ACM (The Academy of Contemporary Music)  
Anglia Ruskin University  
University of Bath  
Bournemouth University  
University of Bristol  
University of Cambridge  
University of East Anglia  
University of Edinburgh  
University of Essex  
University of Exeter  
University of Kent  
King's College London, University of London  
University of Leeds  
University of Liverpool

Loughborough University  
University of Manchester  
Newcastle University  
University of Nottingham  
University of Oxford  
Oxford Brookes University  
Queen's University Belfast  
Royal Agricultural University  
University of Southampton  
University of St Andrews  
University of the West of England (UWE Bristol)  
University of York



## WHERE DO YOU WANT IT TO TAKE YOU? WE'LL HELP YOU FIND YOUR WAY

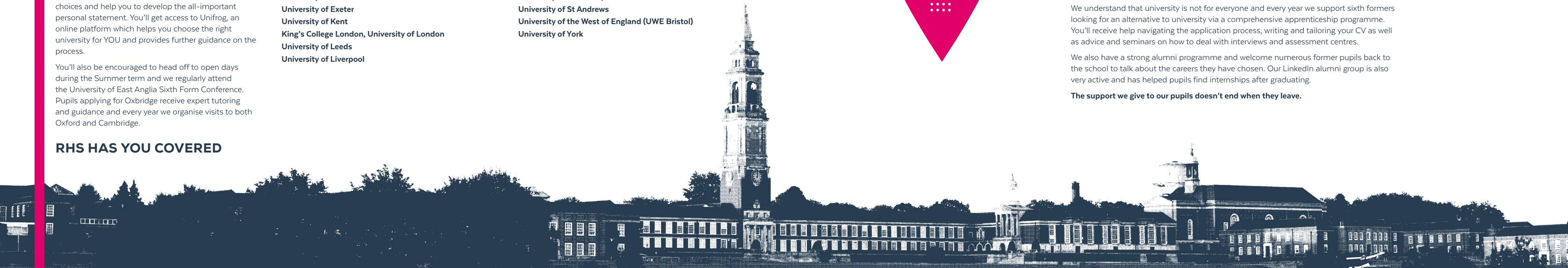
All of our sixth formers spend time with an independent and impartial careers adviser who regularly comes to RHS to individually see every pupil.

We also have a careers library packed full of useful information which we keep updated. Our sixth form team host regular careers events and bring in a wide range of employers to talk to pupils about opportunities within different fields.

We understand that university is not for everyone and every year we support sixth formers looking for an alternative to university via a comprehensive apprenticeship programme. You'll receive help navigating the application process, writing and tailoring your CV as well as advice and seminars on how to deal with interviews and assessment centres.

We also have a strong alumni programme and welcome numerous former pupils back to the school to talk about the careers they have chosen. Our LinkedIn alumni group is also very active and has helped pupils find internships after graduating.

**The support we give to our pupils doesn't end when they leave.**







# CHOOSING THE RIGHT COURSE

RHS OFFERS A FANTASTIC RANGE OF SUBJECTS TO CHOOSE FROM IN THE SIXTH FORM  
**FOCUS ON THE AREAS YOU'RE PASSIONATE ABOUT**

Our curriculum is designed to give you the time and space you need to successfully make the step up to A Level study and prepare you for the future. With A Level and BTEC results improving year-on-year, our sixth form provision is stronger than ever, successfully supporting and stretching pupils academically throughout their two-year journey at RHS.

The curriculum is centred on three A Level or BTEC subject choices. In Year 12 these are complemented by an elective choice – an additional qualification that is studied throughout Year 12, alongside our RHS+ and RHS Xtra programmes to widen your horizons and prepare you for life beyond school.

Whilst choosing just three subjects can be challenging, particularly as we offer such a wide variety of options, there are benefits from starting Year 12 with your three choices already made – these include maximising curriculum time for each A Level/BTEC subject and creating space in the timetable for an additional qualification (the elective). For more information please see page 51.

Universities are clear they're interested in pupils gaining the best grades possible in three subjects, and there's plenty of guidance available from the RHS sixth form team on how to choose these.

Our range of BTECs run alongside traditional A Levels. These are rigorous qualifications, recognised by universities as equivalent to A Levels, offering you a different way of learning, with a greater focus on workplace skills, coursework and the ability to sit modules throughout the course. Most of our BTECs correspond to one A Level although our BTEC in Enterprise and Entrepreneurship is the equivalent of two A Levels, so is studied alongside one other subject choice. A Levels are now linear subjects with all exams taking place in the summer of Year 13.





## ART AND DESIGN A LEVEL

If you're a creative type and want to explore a host of skills backed by analytical thinking, research and communication, Art and Design makes a great choice. Creative skills provide a great complement to other subjects. Choose from Fine Art, Photography or Textiles.

### Course Info

- The Fine Art course explores art in all its forms, developing skills and approaches in painting, drawing, sculpture, mixed media and print. It is the perfect course for those who thrive in a creative and independent environment.
- Learn the "language" of photography, how to "read" and analyse your images, alongside a range of techniques, processes and skills.
- Textiles will see you producing rich, mixed media pieces and involves sculptural exploration, fabric investigations, manipulation of materials and experiments with stitching, surface and pattern. Perfect for a career in textile design and fashion.
- All courses build portfolios for application to creative university courses.

### Assessment

100% non-examination assessment

### Entry Requirements

If you opt to study Fine Art or Textiles you are strongly advised to have studied GCSE Art to Grade 7 or above. However, a strong portfolio of work may be considered. Photography does not require prior study in the subject.



## Course Directory

## BIOLOGY A LEVEL

The study of life itself. Gain a greater understanding of living things at this pivotal time for our planet. Both challenging and rewarding, this course is right for you if:

- You want a career in biotechnology, conservation or medicine;
- You like solving problems & think analytically;
- You are interested in the natural world – from evolution to genetic engineering; and
- You are prepared to work hard.

### Course Info

- The course will focus on the key principles that underpin all of biology.
- Topics covered include molecular biochemistry, plant and animal physiology, and DNA technology.
- Strong focus on practical skills.

### Assessment

100% examination

### Entry Requirements

Grade 7 in GCSE Biology or Grade 7/7 at Double Award Science. Pupils should have a GCSE points average of 6.5 or higher.

"Biology is the study of complicated things that have the appearance of having been designed with a purpose."

*Richard Dawkins*



## Course Directory

## BUSINESS A LEVEL

Fancy yourself as the next Richard Branson or Karren Brady? Choose Business at A Level and you're on your way. You'll learn the fundamentals of running a business and why Virgin keeps flying high whilst Thomas Cook hit rock bottom. What's more, Business complements most other subjects whether arts or sciences.

### Course Info

Discover more about:

- Marketing
- Human Resource Management
- Finance
- Operations Management

### Assessment

100% examination

### Entry Requirements

You do not need to have studied GCSE Business but you will need to have a reasonable level of ability in both English and Mathematics.







## Course Directory

# CHEMISTRY A LEVEL

Chemistry is an essential part of our lives and it's had an impact on pretty much everything; from helping us cope with the increasing pressures on our natural resources to improving and maintaining human health in our rapidly changing world - chemistry is all around us. Why not study this exciting subject and discover what impact you can have?

### Course Info

- Builds on the foundation you have established at GCSE;
- Covers a wide variety of basic concepts such as the structure of the atom, the interaction of matter and energy, how to control reactions, patterns in the periodic table, understanding carbon-based molecules;
- Greater emphasis on explaining rather than describing the behaviour of substances; and
- You will develop a range of practical skills too.

### Assessment

100% examination including a practical exam

### Entry Requirements

Grade 7 or above in GCSE Chemistry (or 7/7 Double Award Science) and Grade 7 or above in GCSE Mathematics.

"Every aspect of the world today - even politics and international relations - is affected by chemistry."

*Linus Pauling*



## Course Directory

# CLASSICAL CIVILISATION A LEVEL

This fascinating course will open your eyes to the classical world and how it has influenced western culture. It provides an appreciation of Graeco-Roman religion, politics, philosophy, literature and art, illustrating their bearing on the society we live in. This inter-disciplinary exploration of two cultures complements both arts and sciences thanks to the diverse range of topics and skills it assesses.

### Course Info

You will study three papers:

- World of the Hero: Homer's Odyssey and Virgil's Aeneid
- Greek Art
- Democracy and the Athenians

### Assessment

100% examination

### Entry Requirements

There is no need to have studied the subject previously.

"Wise men speak because they have something to say; fools because they have to say something."

*Plato*



# CREATIVE DIGITAL MEDIA PRODUCTION BTEC (equivalent to one A Level)

If you're thinking about a career in film, television, radio, publishing or advertising then this is a course you should consider. It will arm you with the knowledge and practical skills you'll need to work in the sectors that most interest you. The creative economy in the UK employs 3 million people and it's still growing.

### Course Info

- You'll complete three compulsory units - media representation, pre-production portfolio and responding to a brief - and a fourth that will allow you to develop a product of your own.
- It's a great course to pair with other subjects, allowing you to stretch your creative skills whilst demonstrating strong academic understanding.
- Outside the classroom you'll have opportunities to produce material for RHS media platforms through our in-house production company.

### Assessment

4 units - 2 assessed internally (42%),  
2 assessed externally (58%)

### Entry Requirements

An interest in the media and a desire to be creative.

In 2016, 1 in 4 students who got into a university did so with a BTEC.





## ECONOMICS A LEVEL

Why are some people paid well and others the bare minimum? Who or what determines the price of things such as that posh coffee you spend your money on? Study Economics and you'll start to discover answers to all things financial. You'll find yourself highly marketable with a qualification respected by universities as it demonstrates your analytical ability.

### Course Info

- In Year 12 you'll focus on Markets & Market Failure and the UK Economy;
- In Year 13 you'll move on to Business Behaviour and A Global Perspective.

### Assessment

100% examination

### Entry Requirements

High grades at GCSE English and GCSE Mathematics. It's advised not to take both Economics and Business.



## ENGLISH LANGUAGE A LEVEL

Study English Language at A Level and you'll discover why we speak like we do, how we use language and how it's changed over time. Have cultural changes and globalisation impacted on the way we speak? If you're interested in words, how they sound and why people communicate in the way they do, English Language is the one for you.

### Course Info

- Topic areas covered include the key features of speech, conversation and written communication; language and gender; child language acquisition; accents and dialect.
- In Year 13 you'll complete an independent language investigation into an area of personal interest (a non-examination assessment).

### Assessment

80% examination  
20% non-examination assessment

### Entry Requirements

A good pass (Grade 5 or above) in GCSE English Language.

"Language is wine upon the lips."  
*Virginia Woolf*



## ENGLISH LITERATURE A LEVEL

Do you love books and reading? Do you enjoy exploring literary texts both analytically and critically? Studying English Literature lets you explore the written word from across the centuries, drawing on our rich literary heritage from different cultures.

### Course Info

- Study includes one of Shakespeare's plays and a range of novels, plays and poetry.
- You'll also look at a wide selection of modern poetry, prose and drama for non-examination assessment.
- In addition, there will be a range of critical texts to support your understanding of the novels, plays and poetry studied.

### Assessment

80% examination  
20% non-examination assessment

### Entry Requirements

Grade 6 or above in both GCSE English Literature and Language.

"Stories of imagination tend to upset those without one."  
*Terry Pratchett*





## ENTERPRISE & ENTREPRENEURSHIP

**BTEC** (equivalent to two A Levels)

A challenging, up-to-date and always relevant course which requires a high level of commitment. You need to be highly-motivated and with the clear ambition of following a career path in business or setting up on your own.

### Course Info

A total of 8 units make up the course, which are assessed at the end of each unit:

- Entrepreneurs and entrepreneurship
- Developing a marketing campaign
- Personal and business finance
- Launch and run an enterprise
- Survival and growth
- Business decision making
- Social enterprise
- Innovation and enterprises

### Assessment

5 of the units are assessed through coursework assignments, 3 are assessed through end of unit examinations.

### Entry Requirements

You will have a passion to study Enterprise and Entrepreneurship and a strong work ethic.

*“Luck is what happens when preparation meets opportunity.”*

*Richard Branson*



## GEOGRAPHY A LEVEL

Never has there been a more important and relevant time to study Geography with the aim of understanding our world and its future. Geography graduates are some of the most sought-after, often earn above-average starting salaries and are less likely to face unemployment.

### Course Info

- Cover a wide range of both physical and human geography, all from a contemporary, forward-thinking perspective and linked to the modern world.
- Investigate real-world examples while developing all sorts of geographical skills which are relevant in the world of work.
- Take part in field trips to North Devon, Southwold and a regular optional trip to Iceland as part of your fieldwork.

### Assessment

80% examination

20% non-examination assessment

### Entry Requirements

Ideally a minimum of a Grade 6 at GCSE, however, it is not essential to have studied the subject previously.

*“Geography is the subject which holds the key to our future.”*

*Michael Palin*



## HISTORY A LEVEL

*“History is who we are and why we are the way we are”*

Encompassing politics, economics, religion, culture and sociology – you’ll always find something to interest and inspire you when studying History. It will teach you skills such as critical thinking, debate, analysis, evaluation – all measured with a balanced view.

### Course Info

- Learn about people, countries, societies and cultures; learn to locate and sift facts and how to present your ideas to other people whilst focusing on British and European history.
- Travel from Rebellion and Disorder in Tudor England to Russia from 1917-1991 and East Germany 1945-1991.
- Complete a coursework module on either the work of the historian or the causes behind the English Civil War.

### Assessment

80% examination

20% coursework

### Entry Requirements

Self-motivation, a love of the subject and good literacy skills (a Grade 6 in English would be ideal).

*“A people without the knowledge of their past history, origin and culture is like a tree without roots.”*

*Marcus Garvey*





# LATIN

## A LEVEL

Latin can take you to the top of a host of different industries. It is a subject that enables pupils to showcase their very best abilities. The logical and meticulous approach to language together with the higher order thinking required to critically interpret literature will prepare students for a university degree in either arts or sciences.

Course Info

- Study of Latin language, translation and composition
- Study of Latin verse and prose literature
- Insight into Roman culture: from political propaganda and imperial scandal, to urban life and illicit romance.

Assessment

100% examination

Entry Requirements

A Grade 6 minimum in GCSE Latin.

“ad virtutem autem capessendam litterarum studia plurimum adiumenti praebebent.”  
*Piccolomini*



# MATHEMATICS

## A LEVEL

A good mathematics qualification can fast-track you to a well-paid, interesting and rewarding career. You'll improve your logic and analytical skills and will develop an ability to think creatively and strategically – skills which enhance and support A Level subjects such as Biology, Chemistry, Physics, Business, Economics, Geography and Psychology.

Course Info

- Split into two parts, the course covers Pure Mathematics and Applications (incorporating Statistics and Mechanics).
- Topics covered include algebra, trigonometry, integration, probability, statistical sampling and kinematics.

Assessment

100% examination

Entry Requirements

A genuine interest in the subject and a minimum of a Grade 7 at GCSE Mathematics.

“There should be no such thing as boring mathematics.”  
*Edsger Dijkstra*



# FURTHER

# MATHEMATICS

## A LEVEL

A very demanding course aimed at pupils with a natural ability for mathematics and who will also be taking A Level Mathematics. It offers a real challenge and the chance to explore new and more sophisticated mathematical concepts. It also helps the transition from sixth form to a **mathematically-rich university course as more of the first year content will be familiar. Students taking this course will distinguish themselves as able mathematicians in both their applications for university and future employment.**

Course Info

- Year 12 sees you complete the A Level Mathematics course moving on to study the harder, additional units to complete the Further Mathematics A Level in Year 13.
- Four areas are covered: two Core Pure Maths papers along with Further Statistics and Further Mechanics.

Assessment

100% examination

Entry Requirements

A minimum of a Grade 8 at GCSE Mathematics.



# MUSIC

## A LEVEL

Do you love singing in a choir or playing regularly in an orchestra? Perhaps you've got your own band or want a career as an opera singer? Become a better musician by studying diverse music styles from classical to film, popular to jazz. Whatever genre makes your heart sing, this course will strike the right chord.

Course Info

- Prepare for an 8-minute public performance.
- Develop your composition skills and produce two pieces of your own work.
- Study set pieces of music in preparation for a written exam.

Assessment

100% examination:

- Performing (30%)
- Composing (30%)
- Appraising (40%)

Entry Requirements

The technical standard expected for performing is around ABRSM Grade 7 or equivalent.

Did you know the British Navy uses Britney Spears songs to scare off pirates?



# MUSIC TECHNOLOGY\*

## A LEVEL

Fancy yourself as the next Billie Eilish? Intrigued to discover how popular music styles have evolved or how the technology behind music has changed and evolved? Or do you just enjoy listening to music? This course is perfect for anyone who has a genuine passion for music.

Course Info

- Study recording and production techniques, principles of sound and audio technology and the development of recording and production technology.
- Learn about all aspects of creative studio work whilst developing your musical talent and creativity using the very latest in music technology.

Assessment

60% examination

40% non-examination assessment

Entry Requirements

A genuine interest in music production and recording, a flair for composition and a willingness to learn. Basic keyboard skills would be an advantage, but are not a prerequisite.

“You can’t really imagine music without technology.”  
*Brian Eno*

\* Music Technology is currently being offered as a premium subject for an additional charge, subject to interest.





## PHYSICS A LEVEL

Physics is the study of matter, energy and the interaction between them. In A Level Physics you will investigate the limits of space, the beginning of time, understand how technology works and get to grips with the fundamentals of science. If you are interested in:

- how the sun keeps shining
- the fundamental building blocks of matter
- how some buildings remain standing while others don't
- how complex electronic circuits work
- the development of sustainable forms of energy production
- how magnetic levitation trains work, etc.

...then Physics is the subject for you!

### Course Info

- Cover a wide range of topics from Mechanics and Materials to Astrophysics.
- Develop your practical skills throughout the course.
- Immerse yourself in a range of opportunities such as the Physics Olympiad, an engineering design and build competition, plus regular talks at the University of Cambridge.

### Assessment

100% examination plus standalone practical assessment

### Entry Requirements

Grade 7 or above in GCSE Mathematics.  
Grade 7 in GCSE Physics or 7/7 in Combined Science.



## POLITICS A LEVEL

Politics shapes our world on a daily basis and your course will change and morph as policies change. This subject is all around us – on television, radio, in newspapers, the internet, and even in our conversations. The course is very much involved with up-to-date politics and will make television news watching a more intelligible and interesting experience.

### Course Info

- The course focuses on UK and USA politics as well as political ideas such as feminism and conservatism.
- You'll develop a critical, rigorous and analytical approach to your studies whilst gaining interpretative and evaluative skills.
- It is intellectually demanding, involving considerable background study involving the quality news media and current affairs programming.

### Assessment

100% examination

### Entry Requirements

An interest in politics and the ability to respond to a wide range of stimuli including books, websites and news broadcasts.

*"Politics is the art of looking for trouble, finding it everywhere, diagnosing it incorrectly and applying the wrong remedies."*

*Groucho Marx*



## PRODUCT DESIGN A LEVEL

From futuristic materials to ergonomic considerations, could you revolutionise everyday objects with your technical and creative design genius? Envisaging what might exist in the future and making it a reality today is a unique human ability. Product Design introduces you to this field of human endeavour to achieve just that.

### Course Info

- Investigate historical, social, cultural, environmental and economic influences on design and technology.
- Gain a real understanding of what it means to be a designer alongside the knowledge and skills sought by higher education and employers.
- Put your learning into practice by producing prototypes of your choice.

### Assessment

50% examination

50% non-examination assessment

### Entry Requirements

A GCSE in Design and Technology is preferred, along with good levels in English, Mathematics and Science.

*"Most people make the mistake of thinking design is what it looks like. People think it's this veneer – that the designers are handed this box and told, 'Make it look good!' That's not what we think design is. It's not just what it looks like and feels like. Design is how it works."*

*Steve Jobs*





# PSYCHOLOGY

## A LEVEL

Have you ever wondered if prison really does change criminal behaviour? Why are some people more prone to suffering from stress or mental illness? Psychology considers questions like these using a scientific approach and cutting-edge research that has real world relevancy.

Course Info

- Year 12 involves the study of introductory topics in psychology e.g. how the mind remembers and forgets, how children form attachments, and what causes abnormality. Learn about the different approaches in psychology and how to design and conduct your own research.
- In Year 13 you'll deepen your understanding of human behaviour by studying issues and taking part in debates. Options include topics like gender, schizophrenia and forensic psychology.

Assessment

100% examination

Entry Requirements

A good GCSE grade in both Science and Mathematics (some universities require a Grade 6 in GCSE Mathematics for Psychology courses). Writing skills are important too.

“In order to succeed, people need a sense of self-efficacy, to struggle together with resilience to meet the inevitable obstacles and inequalities of life.”  
*Albert Bandura*



# RELIGIOUS STUDIES

## A LEVEL

Embark on an intellectual journey of discovery by studying this relevant, alive and exciting subject. Hardly a day goes by without the media touching on an issue that crops up in RS, from world religions to gender and sexuality. You'll develop thinking and written skills as well as your ability to communicate in a debate, analyse and evaluate philosophical, ethical and theological arguments – crucial skills, not just for studying at university but also for living life.

Course Info

- The course comprises three components – Philosophy of Religion, Religion and Ethics, and Developments in Christian Thought.
- In addition, you will be expected to study independently throughout the course – a vital skill to prepare you for university.

Assessment

100% examination

Entry Requirements

A good understanding of English and the ability to structure an answer would be valuable, along with an interest in ethical issues, philosophical arguments and Christian ideas.

“The unexamined life is not worth living.”  
*Plato*



# SOCIOLOGY

## A LEVEL

Have you ever wondered whether the way you see yourself determines the way others do? Or pondered on why men are more likely to commit a crime than women? Studying Sociology offers insights into social and cultural issues, helping you develop perspective alongside a critical approach to understanding issues around culture, identity, religion, crime, families and social power.

Course Info

- Year 12 covers education and methods in context e.g. gender and ethnicity differences in school achievement. You'll also study Families and Households.
- Year 13 topics include crime and deviance as well as a look at beliefs in society.

Assessment

100% examination

Entry Requirements

A good GCSE in English Language or Literature or a humanities subject.

“The function of sociology, as of every science, is to reveal that which is hidden.”  
*Pierre Bourdieu*



# SPANISH

## A LEVEL

After English, Mandarin and Hindi, Spanish is the most spoken language in the world. Having a second language is particularly valued by employers keen to have colleagues who can help them develop their business internationally. So if you fancy travelling to Mexico, South America, parts of Africa or Spain itself, then Spanish will prove indispensable.

Course Info

- Core content includes learning about social issues and trends, political and artistic culture, together with grammar.
- Study will also include literary texts and films e.g. *Like Water for Chocolate* by Laura Esquivel and *Pan's Labyrinth* by Guillermo del Toro.
- One-to-one support with a native speaking language assistant.
- A variety of learning opportunities such as cultural trips, debating competitions and linguistic events.

Assessment

100% examination – Reading & Writing (50%), Writing (20%) and Speaking (30%)

Entry Requirements

A minimum of a Grade 7 at GCSE is recommended but individual cases will be considered.

“If you talk to a man in a language he understands, that goes to his head. If you talk to him in his language, that goes to his heart.” *Nelson Mandela*







## SPORT

**BTEC** (equivalent to one A Level)

Is your dream to build a career around sport? This course prepares the way for anyone wanting to work in the sport and fitness industry as well as supporting entry into higher education within this field. It's a natural follow on from GCSE Physical Education although you don't need to have studied the subject previously.

### Course Info

- Develop your understanding of the theoretical aspects of sport science.
- Participate in physical activity and fitness testing.
- Study a total of four units: Anatomy and Physiology; Fitness Training and Programming for Health, Sport and Well-being; Professional Development in the Sports Industry; and Application of Fitness Testing.
- Apply your learning with experiences that include a visit to a university sports science lab and meeting personal trainers.

### Assessment

67% examination  
33% coursework

### Entry Requirements

An interest in biology for the anatomy and physiology unit is useful.

*"You have to expect things of yourself before you can do them."*

*Michael Jordan*



## IT'S YOUR CHOICE EXPAND YOUR WORLD

Everyone in Year 12 chooses an additional qualification from a list of elective subjects, with each one leading to an additional qualification on top of your three A Levels.

Options include:

- Extended Project Qualification (EPQ) – designed to prepare you for competitive university courses and comprising a research project where you complete a university-style dissertation on a topic of your choice. Recent examples include “Do humans have free will?” and “Was the Iraq war a just war?” Universities highly value the EPQ, often offering a lower grade requirement for pupils with a top grade.
- Level 3 Certificate in Higher Sports Leadership (HSL).
- BTEC Level 2 First Award in Performing Arts (see page 21).
- Core Maths – an AS Level qualification and an ideal choice if you're opting for Psychology, Business or Geography at A Level.
- Learn to sail – gain an RYA sailing qualification. These are aimed at anyone, whether you're a novice or want to extend your experience.
- Level 2 Cambridge Technical in IT – a GCSE equivalent that gives you a broad-brush experience of computing and game design.
- The IELTS course – compulsory for all non-native English speakers who want to study at a UK university and have not attained a GCSE pass in English.
- Further Mathematics – see page 44 for details.





# WHAT'S ON

## WELCOME WEEK MONDAY 7 – FRIDAY 11 SEPTEMBER 2020

There's a whole week of welcome events to help you settle in and meet lots of friendly faces.



### MONDAY 7

You'll start the day with a tutor period and assembly. Pick up your goody bag, get your photo ID card and then the fun begins.

You'll break down into smaller groups to take part in all of the activities:

#### ESCAPE ROOM

Will your group be the fastest to escape from the Old Music School? If you can hit all the right notes, who knows what you'll win?

#### STRICTLY RHS

Do you know your tango from your paso doble? A ballroom dancing lesson will be followed by a speed-dancing competition to find the lightest on their toes.

#### TEAM SPIRIT

Be it blind food tasting or walking on Lego, can you work with your team to be the best?

#### MEET THE SIXTH FORM TEAM

Find out how to approach study over the next two years.

Be the first to experience the new RHS café with a whacky quiz and whackier prizes.

### TUESDAY 8

The Best-Ever BBQ & Mini Olympics

### WEDNESDAY 9

#### IT'S ON THE HOUSE #1

Wednesday and Thursday will see the boys' and girls' houses taking it in turns to host get-togethers, challenges and, of course, food and drink.

### THURSDAY 10

#### IT'S ON THE HOUSE #2

### FRIDAY 11

Friday night means it's time for the formal Sixth Form Dinner in the Jellicoe Room - an opportunity to experience a formal dinner and featuring a guest speaker. In the past, these have included Chemmy Alcott (GB's most successful female skier) and Goldie Sayers (Olympic bronze medallist for the javelin).

# NEXT STEPS

If you'd like to find out more about the RHS sixth form experience, why not come along to our next event - you'll find details of these on the back of this prospectus.

If you'd like to speak to someone, you can ring our admissions team on 01473 326136/178 or drop them a line at [admissions@royalhospitalschool.org](mailto:admissions@royalhospitalschool.org)

There are numerous ways we can help pupils with their fees as RHS offers a range of scholarships and bursaries. These are all listed on our website - [www.royalhospitalschool.org](http://www.royalhospitalschool.org)

We look forward to seeing you.



# LOCATION, LOCATION LOCATION

SET IN 200 ACRES OF GLORIOUS SUFFOLK COUNTRYSIDE,  
**THE SCHOOL IS PERFECTLY PLACED FOR WORK, REST AND PLAY**



The Royal Hospital School is located on the B1080 between the villages of Stutton and Holbrook and can easily be found using our postcode, IP9 2RX. If you have your own car, there is plenty of parking on site.

By train, we're an hour from London and our nearest mainline stations are Manningtree or Ipswich.

London Stansted Airport is under 50 miles away and we're also within striking distance of Gatwick, Heathrow and Luton Airports.

We run our own buses to and from RHS from Monday to Saturday and have a dedicated full-time transport manager to help you with any queries and requests.

Our school bus service offers fantastic value for money and can be used on either a full or part-time basis.





**WHY NOT ARRANGE A VISIT TO DISCOVER WHAT  
THE ROYAL HOSPITAL SCHOOL CAN OFFER YOU?**

**OPEN MORNINGS**

---

<b>SATURDAY 2 MAY</b>	<b>9.00AM-1.00PM</b>
-----------------------	----------------------

---

<b>SATURDAY 3 OCTOBER</b>	<b>9.00AM-1.00PM</b>
---------------------------	----------------------

---

<b>SATURDAY 14 NOVEMBER</b>	<b>9.00AM-1.00PM</b>
-----------------------------	----------------------

---

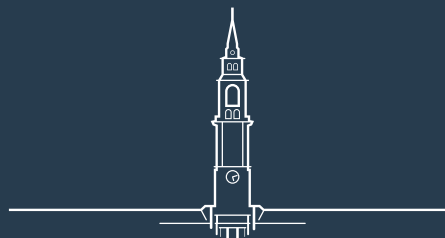
**SIXTH FORM INFORMATION EVENING**

---

<b>THURSDAY 15 OCTOBER</b>	<b>6.00PM ONWARDS</b>
----------------------------	-----------------------

---

**TO BOOK A PLACE OR ARRANGE A VISIT PLEASE CONTACT THE ADMISSIONS  
OFFICE 01473 326136/178 OR [ADMISSIONS@ROYALHOSPITALSCHOOL.ORG](mailto:ADMISSIONS@ROYALHOSPITALSCHOOL.ORG)**



**[WWW.ROYALHOSPITALSCHOOL.ORG](http://WWW.ROYALHOSPITALSCHOOL.ORG)**