

Guide for Families: Altitude Learning Playlist

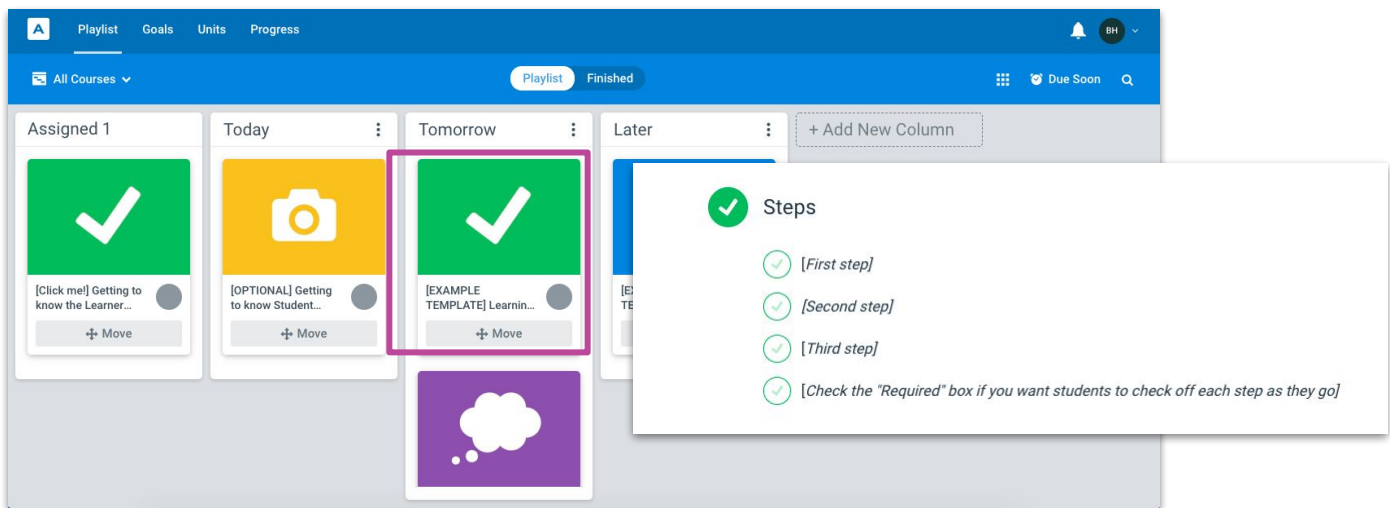
Here is a guide to help your child access their Playlist on the Altitude Learning Platform. Watch this [video](#) to get an idea of what the playlist is like.

1 Follow the instructions from your school to log into the Altitude Learning Platform in a Google Chrome browser.

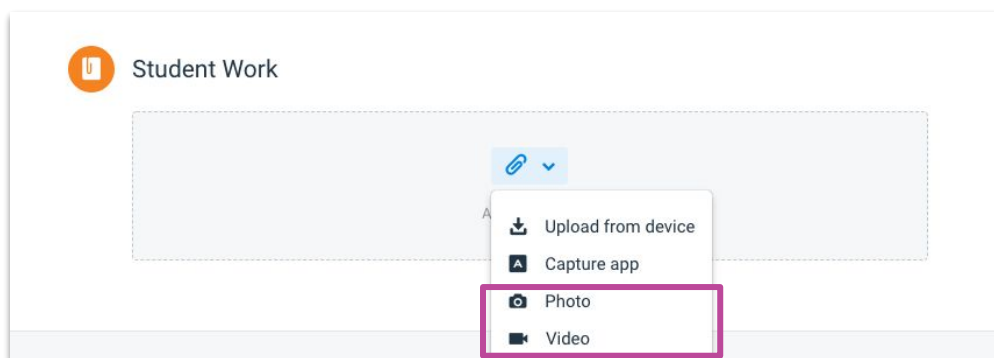
If you or any of your children use the same device and all use Google to sign-in, you may need to set up a separate chrome profile to make sure that you do not accidentally use another account.

- Click [here](#) to learn how to set up a Chrome profile.
- If you need help please email support@altitudelearning.com.

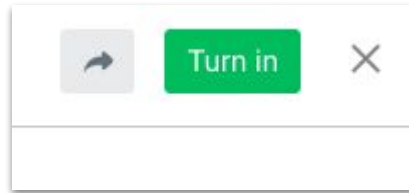
2 Click on a card from the playlist and follow the instructions.



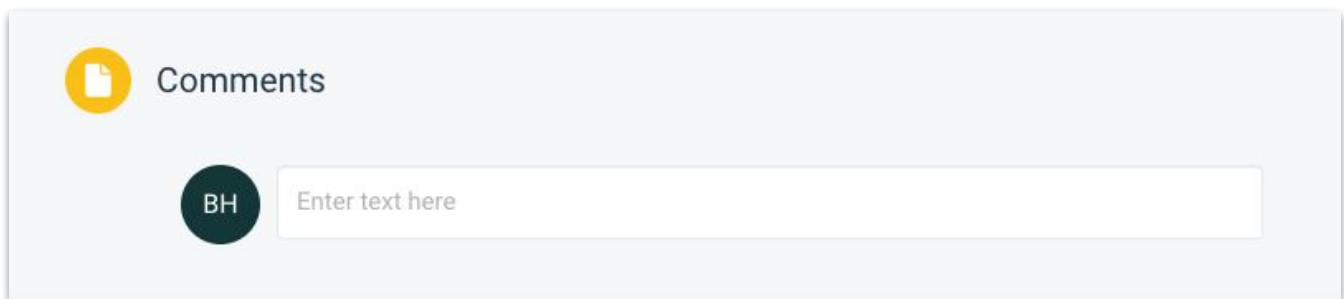
3 Help your child add videos of themselves answering questions or talking about what they learned, and/or include images of their work.



- 4 Help your child turn in the Card when they finished their work by clicking the green “Turn in” button.



- 5 If you have questions or need help, comment on the Card and your child’s teacher will receive a notification.



- 6 Check the notification bell for comments in a Card or whole class announcements on Student Stream from the teacher.

