

We provide crisis services that are recovery-oriented, trauma-informed, and evidence-based.

“ We strongly believe that crisis is a community issue, not just an individual issue.

As such, we view ourselves as a community resource available to assist community members in addressing a community need.

Rather than viewing individuals in isolation, we consider them part of interconnected spheres of natural, professional and community relationships.

Our services therefore seek not only to help the individual but also to fortify those around the person through education and support during a trying time.”



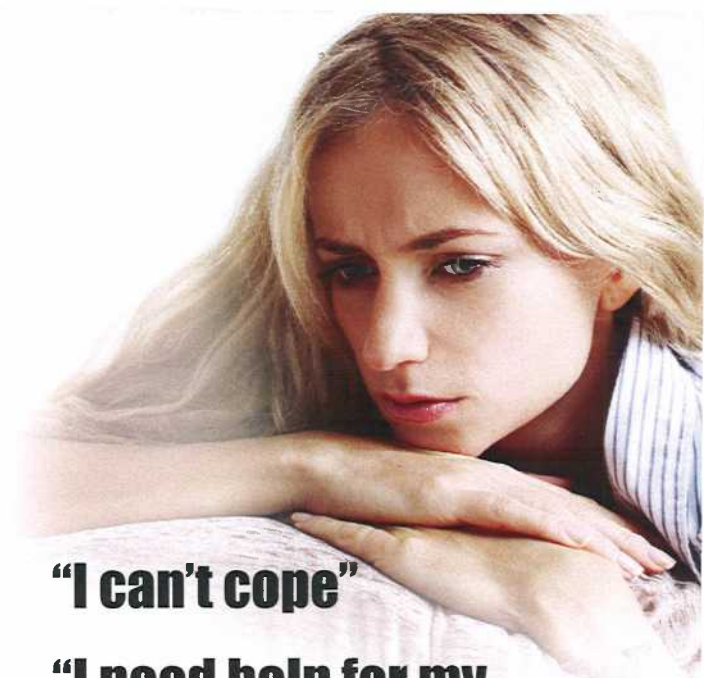
www.elwyn.org

Delaware County Crisis Connections Team

The Delaware County Crisis Connections Team program was developed and is managed by Elwyn **Crisis Services** on behalf of the Delaware County Office of Behavioral Health and Magellan Behavioral Health of Pennsylvania, Inc. Crisis services offered by the program are available **free of charge** to all children and adults residing in Delaware County, Pa.



Funding provided by Delaware County Council, the Delaware County Department of Human Services, Office of Behavioral Health (www.co.delaware.pa.us)



“I can't cope”

“I need help for my loved one”

“I'm overwhelmed”

“My neighbor needs help”

“I can't go on”

1.855.889.7827

Delaware County
Crisis
CONNECTIONS TEAM

We're Listening



We Listen and Assess Your Needs
Help is a phone call away.

Life is not always easy for those who are challenged by mental health, substance abuse, trauma, violence or other issues that affect our emotional wellbeing. For the individuals who suffer, and for the family and friends who care about them, times of crisis can be frightening and overwhelming.

That's where the Crisis Connections Team comes in.

We are a service for Delaware County residents whose mission is to listen, assess your needs, help you gain control, and provide connections to needed resources. We're there for you.

Mobile Crisis Team

Get help wherever you are:

855.889.7827

We're Listening Wherever You Are
Get help now, at your location.

If you, or someone else, need immediate help with a mental health or substance abuse issue, Crisis Connections Team Mobile Crisis can come to you. You can call us any time of the day or night, and we will come to any location in Delaware County, whether it is in a home, a school, police station, emergency room or other community setting. Our trained crisis response teams will provide:

Assessment – We'll assess the situation, and work to understand the immediate crisis and its causes.

Intervention – We'll use brief, therapeutic interventions to stabilize the situation, and to help you or those affected to regain control.

Referral – If needed, we'll help you take steps to get immediate help. This could include referrals to outpatient follow up, to a residential inpatient alternative or to an inpatient psychiatric facility.

The Mobile Crisis Teams are culturally diverse and available to help people of all ages including children, adolescents, adults and the elderly.

We're Listening & Reaching Out
Crisis Prevention

While our main mission is to provide help and support during times of trouble, Crisis Connections Team is also proactive in helping to prevent crises from happening. We are dedicated to partnering with community groups, educators, law enforcement, medical professionals and others to raise awareness of mental health issues related to psychiatric illness, substance abuse, trauma and violence.

Educational Sessions

Crisis Connections Team professionals can provide community groups with educational sessions targeting mental health issues in general or suicide specific sessions from 1 hour to two days. Our two-day suicide intervention workshop, Applied Suicide Intervention Skills Training (ASIST), is an internationally utilized, evidence-based program developed by LivingWorks that trains anyone to intervene in suicide situations.

Community Awareness

Making community members aware of Crisis Connections Team services and support is vitally important. We are available to present our program to interested groups throughout Delaware County.

To learn more about Crisis Connections Team outreach programs, email our director at muehsamjo@elwyn.org