

Coronavirus Infection Control Fact Sheet



How The Budd Group is Working to Keep Your Buildings Healthy and Help Prevent the Spread of Infectious Diseases

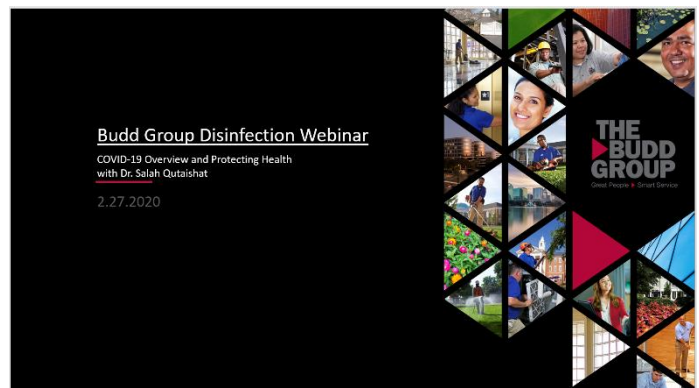
The news stories about the Coronavirus outbreak across the globe and in the US are reminders of the need to remain vigilant and take extra precautions when it comes to infection control. The Budd Group is working hard every day to help prevent the spread of infection in your buildings.

The Budd Group has more than 50 years of experience in janitorial services, access to the best hospital-grade disinfectants and expertise in infection control and cleaning best practices. A thorough cleaning program focused on diligent disinfection that is executed by trained, expert cleaning crews will significantly reduce the risk for potential outbreaks in your buildings.

Another key aspect of infection control is education. It's important to understand how infection works in order to prevent it from spreading among building occupants. This document is intended to provide CDC sanctioned information on Coronavirus as well as outline what The Budd Group is doing to help prevent the spread of infection in your buildings.

Watch our Webinar with epidemiologist and Infection Control Expert Dr. Salah Qutaishat and sign up for regular updates

[Click here for the recorded Webinar](#)



What Is Coronavirus or COVID-19?

Coronavirus is an enveloped virus like the flu virus. SARS-CoV-2 or COVID-19 is the specific strand or kind of a coronavirus that is spreading currently.

How is it Spread?

This type of virus is transmitted on droplets of saliva and making its way to the lungs. This virus can only be spread by person to person transmission or surface to person transmission. Person to person transmission occurs by contacting another person directly, either being in the direct path of someone's sneeze or cough or touching hands with them after they have recently touched their mouth or nose. Surface to person transmission occurs after touching an infected surface then touching the nose or mouth. The current thinking is that the virus can live on a surface for up to 24 hours. If an uninfected person were to touch that surface before the virus dies then touch their nose or mouth, they could be infected.

What Can Be Done to Reduce the Spread of Infectious Diseases?

The No. 1 line of defense against the spread of illnesses like COVID-19 and the common cold (rhinovirus) is frequent handwashing. In addition to diligent handwashing with soap and water and the use of hand sanitizer, building occupants should practice cough etiquette to prevent the spread of contaminated respiratory secretions which can spread up to six feet.

What Is The Budd Group Doing to Reduce the Spread?

The Budd Group strives to use best practices when cleaning, sanitizing and disinfecting environmental surfaces. Our staff is fully trained in best cleaning practices and disinfection procedures. The CDC recommends the use of an EPA-registered, hospital-grade disinfectant for novel(new) or confirmed viruses, including COVID-19. We use EPA-registered hospital-grade disinfectants, including Oxivir Tb RTU, Oxivir Wipes, Oxivir Five 16, ALPHA-HP Multi-Surface Disinfectant Cleaner #67, Virex Tb, Virex II 256 and Morning Mist. We also recommend increasing the frequency of cleaning during the day. An added cleaning step of either 2 or 4 hours depending on your facilities level of risk has shown to significantly reduce the risk of infection according to an American Journal of Infection Control study on hand hygiene and increased cleaning frequency.

If you would like to know more about the cleaning protocols employed by The Budd Group in your facility or additional steps you can take to protect your employees or occupants, please contact your Budd Group account manager.

Note: The Budd Group specifically disclaims any and all express or implied warranties regarding its cleaning methods, products used, or the prevention of diseases.

Additional resources

Information is a strong defense against the spread of infection. Keep reading and stay informed.

Johns Hopkins CSSE Coronavirus COVID-19 on-line map

<https://www.arcgis.com/apps/opsdashboard/index.html#/bda7594740fd40299423467b48e9ecf6>

World Health Organization (WHO)

<https://www.who.int/emergencies/diseases/novel-coronavirus-2019>

U.S. Centers for Disease Control (CDC):

<https://www.cdc.gov/coronavirus/2019-ncov/index.html>



buddgroup.com