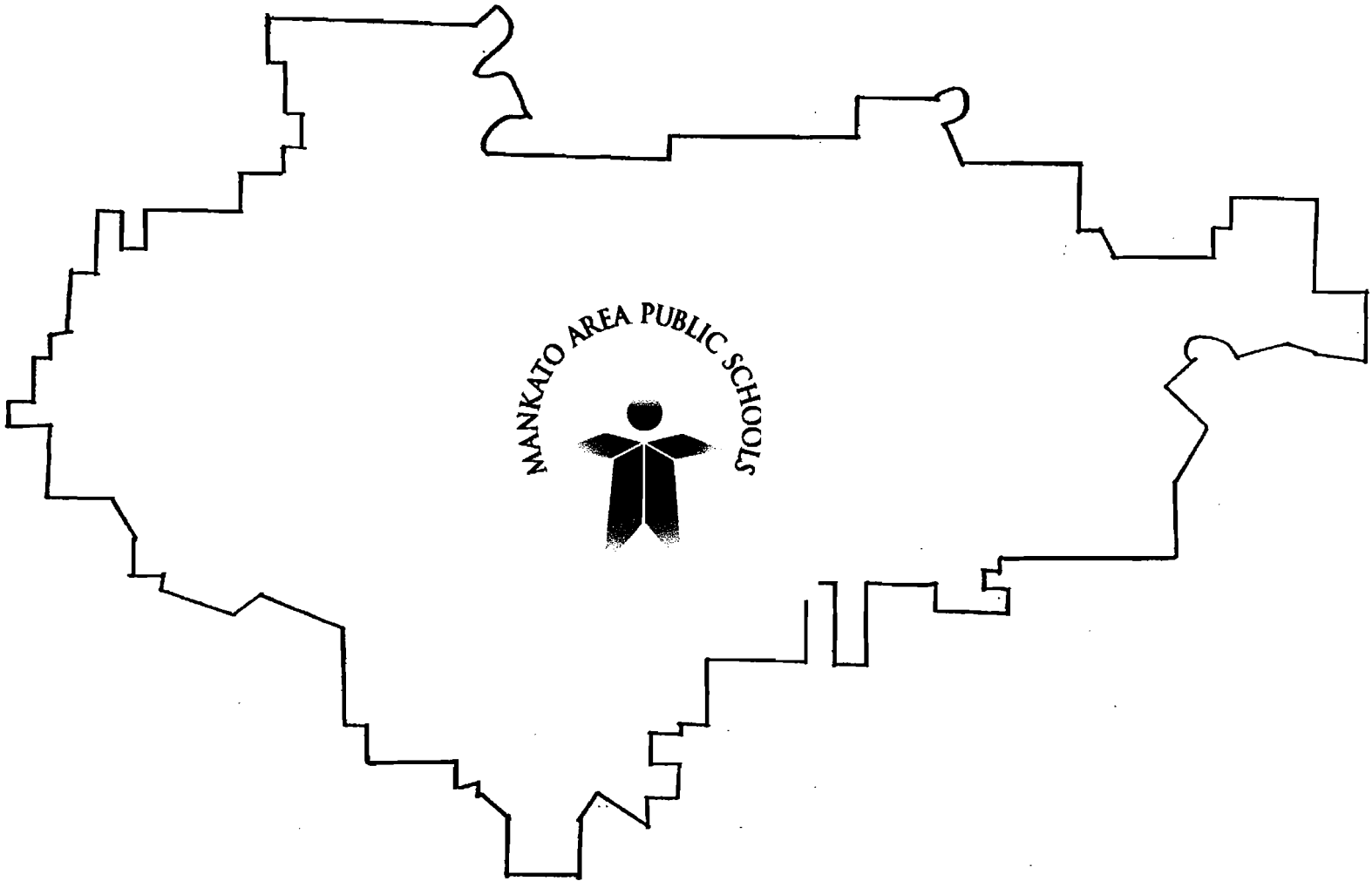


Demographic Data



January 15, 2010

TABLE OF CONTENTS

<u>Description</u>	<u>Page</u>
Enrollment Projections Assumptions	1
Pre-School Census Data Collection	2
K-12 Enrollment Projection Graph.....	3
Feeder School Enrollment Tables	4-5
Elem. & Sec. Enrollments vs. Building Capacity	6
Elementary Class Size Averages	7
Ethnic Heritage Numbers	8
ESL Students Enrolled	9
ELL, SpEd & Free/Reduced Lunch Statistics	10
Post Secondary Enrollment Options (PSEO)	11
Attendance Exceptions	12
Open Enrollment/Non-Resident Agreements	13-16
Nonpublic School Enrollments	17
Homeschooling Summary	18
Neighboring School District Enrollments	19

MANKATO AREA PUBLIC SCHOOLS

ENROLLMENT PROJECTIONS ASSUMPTION STATEMENTS

1. *The “Cohort Survival Ratio”* method used in projecting enrollments for Mankato Area Public Schools by analyzing enrollment trends will continue to be a very accurate methodology.*
2. *Moderate fluctuations in the local economy will result in minimum impact upon student enrollment projections.*
3. *Open enrollment and consolidation with other school districts will have minimal impact on the Mankato Area Public School populations.*
4. *Nonpublic enrollments will remain stable and will have no material impact upon student projections.*
5. *The communities comprising Mankato Area Public Schools will have minimal growth over the next five to ten years.*

* *Mathematical technique which uses past enrollment trends to project future trends. Mankato Area Public School uses the projection model recommended by the Minnesota Department of Education.*

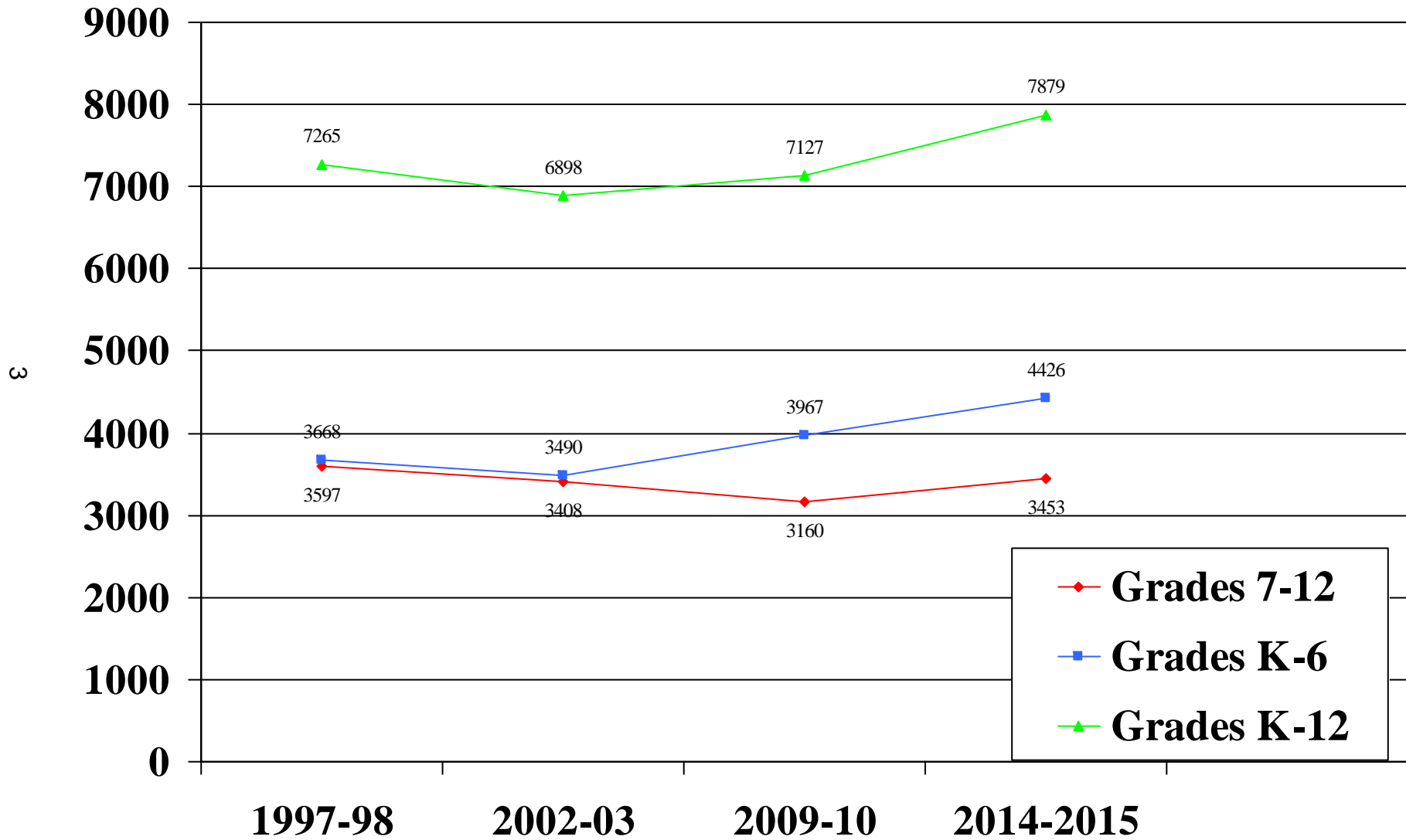
MANKATO AREA PUBLIC SCHOOLS

PRE-SCHOOL CENSUS DATA COLLECTION

The Census Department receives and inputs all pre-school information on the student database for Mankato Area Public Schools in the following ways:

1. **NEW BIRTHS** - *Information recorded at the Blue Earth County Courthouse regarding babies born at Immanuel-St. Joseph's-Mayo Health System is collected by the Census Department.*
2. **PRE-SCHOOLERS** - *Information pertaining to any new families, who move into the Mankato area and call the Early Childhood Department to register their pre-schoolers for classes, is forwarded to the Census Department.*
3. **PRE-SCHOOLERS** - *A flyer asking parents for pre-school information is included in the Back to School Newsletter in the fall of each year which parents complete & send to the Census Department.*
4. **PRE-SCHOOLERS** - *When students complete their student registration forms, they are asked to include information pertaining to other siblings in the household, including pre-schoolers. The information is forwarded to the Census Department.*
5. **PRE-SCHOOL SCREENING** - *When the pre-school screening is done by the Special Education Department, any new information received is sent to the Census Department.*

K-12 Enrollments



West Area & Elementary Feeder Schools

October 1st 2009 Enrollments

4

Age/Grade	Bridges	Hoover	Jefferson	Monroe	Roosevelt	Garfield	West	Totals
0*	0	88	44	73	47			252
1*	0	94	32	89	56			271
2*	0	83	39	70	56			248
3*	0	104	39	75	53			271
4*	0	119	43	71	54			287
PK-K	10	102	42	77	65			296
1	10	94	44	69	69			286
2	11	93	42	79	58			283
3	10	79	35	76	67			267
4	5	85	47	82	57			276
5	13	81	32	75	67			268
6	10					264		274
7							307	307
8							272	272
9							285	285
10							259	259
11							288	288
12							290	290
PK Avg.	N/A	93	40	76	59	N/A	N/A	N/A
K-5 Avg.	N/A	89	40	76	64	N/A	N/A	N/A

* 0-4 Numbers are based on the new boundaries to include Rosa Parks

East Jr./Sr. & Elementary Feeder Schools

October 1st 2009 Enrollments

Age/Grade	Bridges	Eagle Lake	Franklin	Washington	Kennedy	Rosa Parks	East	Totals
0*	0	58	100	103	94	67		422
1*	0	72	92	111	80	79		434
2*	0	53	83	88	81	73		378
3*	0	57	88	92	63	72		372
4*	0	73	84	79	75	67		378
PK-K	4	57	81	84	101	N/A		327
1	8	43	75	84	73	N/A		283
2	7	53	74	93	86	N/A		313
3	9	57	89	83	78	N/A		316
4	10	46	68	62	91	N/A		277
5	6	45	73	69	67	N/A		260
6	10		241					251
7							237	237
8							212	212
9							242	242
10							250	250
11							224	224
12							260	260
PK Avg.	N/A	63	89	95	79	72	N/A	N/A
K-5 Avg.	N/A	50	100	79	83	N/A	N/A	N/A

* 0-4 Numbers are based on the new boundaries to include Rosa Parks

Mankato Area Public Schools

2009-10 ESTIMATED ENROLLMENTS VS CAPACITY

Elementary Schools

SCHOOL	ENROLLMENT	CAPACITY	OVER / UNDER
Bridges	144	152	-8
CTSS St Johns-Elem	6	6	0
Eagle Lake	299	308	-9
Franklin	696	710	-14
Garfield	264	270	-6
Hoover	534	484	50
Jefferson	242	264	-22
Kennedy	488	484	4
Monroe	458	484	-26
Roosevelt	383	352	31
Washington	453	396	57
TOTALS	3967	3910	57

**Capacity is computed at 22 students per room for grades K-5 and 27 students per room for grade 6.*

Assumes a room for art, music, computers, and special education.

Secondary Schools

SCHOOL	ENROLLMENT	CAPACITY	OVER / UNDER
Central HS/Freedom	98	140	-42
CTSS St Johns-Secondary	11	12	-1
DMMS	579	600	-21
East Jr/Sr	1371	1555	-184
West	1084	1300	-216
TOTALS	3143	3607	-464

ELEMENTARY CLASS SIZE AVERAGES
2009-10

"C"
10/2/09

	00-01	01-02	02-03	03-04	04-05	05-06	06-07	07-08	08-09	09-10
KINDERGARTEN	17.6	19.6	17.8	17	17.9	20	19.4	19.8	19.0	18.9
GRADE 1	18.9	19.4	20.2	19.2	19.2	19.4	19.1	19.9	20.4	20.4
GRADE 2	19.1	19.3	21.9	21.3	18.7	20.3	19.8	20.8	19.9	20.4
GRADE 3	19.9	20.5	20	21	20.5	21.2	21.1	21.8	21.3	24.2
GRADE 4	21.5	21	24.5	20.9	23.1	23.3	23.1	23.7	23.3	25.0
GRADE 6	25.4	28.5	27.6	2.6	27.9	26.7	25.7	26.5	25.7	27.6

K-6 AVERAGE CLASS SIZE	20.7	21.5	21.8	21	20.9	21.7	21.4	21.9	21.7	22.4
------------------------	------	------	------	----	------	------	------	------	------	------

Mankato Area Public Schools

Ethnic Heritage Distribution

October 1st 2009

School	Total Enrollment	White	%	Black	%	Hispanic	%	Asian	%	American Indian	%
<i>Bridges</i>	144	129	89.58	2	1.39	2	1.39	11	7.64	0.00	0.00
<i>Eagle Lake</i>	299	275	91.97	4	1.34	9	3.01	8	2.68	3.00	1.00
<i>Franklin</i>	696	547	78.59	89	12.79	43	6.18	15	2.16	2.00	0.29
<i>Garfield</i>	264	244	92.42	10	3.79	7	2.65	3	1.14	0.00	0.00
<i>Hoover</i>	533	482	90.43	19	3.56	15	2.81	16	3.00	1.00	0.19
<i>Jefferson</i>	242	189	78.10	28	11.57	13	5.37	11	4.55	1.00	0.41
<i>Kennedy</i>	489	331	67.69	97	19.84	35	7.16	18	3.68	8.00	1.64
<i>Monroe</i>	458	404	88.21	17	3.71	27	5.90	6	1.31	4.00	0.87
<i>Roosevelt</i>	382	346	90.58	6	1.57	20	5.24	8	2.09	2.00	0.52
<i>Washington</i>	453	365	80.57	60	13.25	13	2.87	13	2.87	2.00	0.44
<i>East Jr.</i>	450	335	74.44	64	14.22	30	6.67	16	3.56	5.00	1.11
<i>DMMS</i>	579	518	89.46	22	3.80	20	3.45	15	2.59	4.00	0.69
<i>East Sr.</i>	917	745	81.24	86	9.38	38	4.14	43	4.69	5.00	0.55
<i>West</i>	1076	998	92.75	31	2.88	22	2.04	24	2.23	1.00	0.09
<i>CTSS</i>	17	12	70.59	3	17.65	0	0.00	1	5.88	1.00	5.88
<i>Central HS</i>	108	79	73.15	14	12.96	12	11.11	3	2.78	0.00	0.00
<i>CFS</i>	16	12	75.00	2	12.50	1	6.25	1	6.25	0.00	0.00
Totals	7123	6011	82.63	554	8.60	307	4.48	212	3.48	39	0.81

MANKATO AREA PUBLIC SCHOOLS

2009-10 Primary Languages on ELL Students Enrolled District Wide

Primary Language	Headcount	Enrolled ELL
Adange/Akan/Ewe/Gurma	1	1
Afrikans	2	2
Amharic	1	0
Anuak	25	20
Arabic	17	11
Balinese/Javanese/Sudanese	3	2
Cambodian	13	4
Cebuano	1	1
Chinese	16	6
Cutchi	7	1
English, Creolized	1	1
Estonian	1	0
French	1	0
Hindi	6	2
Hmong	1	0
Japanese	2	1
Korean	10	3
Kurdish	4	2
Mongolian	1	0
Not Specific	3	3
Nuer	94	57
Oromo	3	1
Polish	2	0
Romanian	1	0
Russian	5	3
Serbo-Croatian	1	0
Somali	165	110
Spanish	111	44
Swahili	2	1
Ukranian	3	2
Vietnamese	21	9
Total	524	287

MANKATO AREA PUBLIC SCHOOLS

2009-10 STATISTICS ON ELL, SPECIAL EDUCATION & FREE/REDUCED LUNCH COUNTS BY SCHOOL

<i>School</i>	<i>Headcount</i>	<i>%ELL Students</i>	<i>% Special Ed</i>	<i>% Free/Reduced Lunch</i>
Bridges	142	1	18	23
Eagle Lake	301	0	16	28
Franklin	661	8	16	43
Garfield	275	2	14	27
Hoover	509	3	9	24
Jefferson	249	5	18	32
Kennedy	485	16	16	46
Monroe	468	0	15	31
Roosevelt	379	3	19	32
Washington	448	12	16	47
DMMS	561	1	16	24
East Jr.	454	9	15	42
Central High	101	2	25	54
East Sr.	917	4	15	30
West	1090	1	12	16
Central Freedom	16	0	19	63
TOTALS	7056	4 %	16 %	35 %

***Information based on the 2009 Minnesota Department of Education School Report Card*

Mankato Area Public Schools

Post Secondary Enrollments Options-Student Totals

Year		East		West		ALC		Total
1991-02		20		30		6		56
1992-03		18		29		6		53
1993-04		28		60		7		95
1994-95		35		67		9		111
1995-96		37		49		3		89
1996-97		53		55		12		120
1997-98		43		55		4		102
1998-99		45		49		1		95
1999-00		23		43		1		67
2000-01		31		39		0		70
2001-02		44		37		0		81
2002-03		64		51		1		116
2003-04		68		37		0		105
2004-05		80		49		0		129
2005-06		64		59		0		123
2006-07		94		34		0		128
2007-08		55		61		0		116
2008-09		56		51		0		107

Post Secondary Schools Attended

Pseo Schools	02-03	03-04	04-05	05-06	06-07	07-08	08-09	Total
MSU	104	100	122	118	128	110	92	774
Bethany	8	2	2	3	4	4	6	29
SCC	3	0	3	1	2	2	6	17
Gustavus	2	3	1	1	0	0	2	9
Rasmussen							1	1
Total	117	105	128	123	134	116	107	830

Mankato Area Public Schools

2009-10 Attendance Exception Summary

East Side Schools

SCHOOL		K	1	2	3	4	5	6	7	8	9	10	11	12	TOTAL	DIFFERENCE
East Sr.	In										6	7	7	6	26	
	Out										28	21	21	14	84	-58
East Jr.	In								4	2					6	
	Out								17	20					37	-31
Eagle Lake	In	5	1	3	0	1	0								10	
	Out	2	4	2	4	1	2								15	-5
Franklin	In	16	8	14	10	15	13	5							81	
	Out	10	5	8	14	6	4	22							69	12
Washington	In	10	9	3	11	7	5								45	
	Out	33	17	36	36	31	34								187	-142
Kennedy	In	13	9	15	16	11	14								78	
	Out	11	13	11	8	6	8								57	21
Sub Total	In	44	27	35	37	34	32	5	4	2	6	7	7	6	246	
	Out	56	39	57	62	44	48	22	17	20	28	21	21	14	449	
Grand Total																
		-12	-12	-22	-25	-10	-16	-17	-13	-18	-22	-14	-14	-8		-203

West Side Schools

SCHOOL		K	1	2	3	4	5	6	7	8	9	10	11	12	TOTAL	DIFFERENCE
West	In										28	21	21	14	84	
	Out										6	7	7	6	26	58
DMMS	In								17	20					37	
	Out								4	2					6	31
Hoover	In	7	8	10	4	10	10								49	
	Out	13	7	11	7	11	8								57	-8
Monroe	In	13	10	16	12	15	14								80	
	Out	3	5	6	2	5	6								27	53
Garfield	In							23							23	
	Out							-5							-5	28
Jefferson	In	5	6	11	7	12	11								52	
	Out	3	2	6	5	4	4								24	28
Roosevelt	In	10	4	14	11	2	7								48	
	Out	4	2	6	5	9	6								32	16
Sub Total	In	35	28	51	34	39	42	23	17	20	28	21	21	14	373	
	Out	23	16	29	19	29	24	-5	4	2	6	7	7	6	167	
Grand Total																
		12	12	22	15	10	18	28	13	18	22	14	14	8		206

**BREAKDOWN OF STUDENTS ATTENDING MANKATO AREA PUBLIC SCHOOLS
UNDER OPEN ENROLLMENT AND NON-RESIDENT AGREEMENTS
2009-10**

Mankato Area Public Schools																	
RESIDENT DISTRICT	B	EL	F	G	H	J	K	M	R	W	DMMS	EJ	CFS	CHS	WS	ES	TOTAL
Belle Plaine								K-1					11-1				2
Blue Earth		K-1 3-1				K-1				2-1							4
Cleveland		2-1 5-1	6-1		1-1 4-1			4-1			7-6 8-3			10-2 12-2	12-2 11-1 12-1		23
JWP		2-3	6-2				2-1 3-1 4-1	3-1			8-2			11-2	9-1 10-3 11-3		20
LCWM	K-1 1-1 2-1 3-3 4-1 5-2	K-2 1-2	2-1 3-1 5-1 6-2	6-10	K-1 1-2 2-2 3-1 5-2	4-1	3-1 5-1	K-2 1-2 3-2 4-1	K-1 1-4 2-1 3-4 4-2 5-5		7-8 8-10	8-1		12-1	9-12 10-8 11-4 12-6	9-2 10-4 11-2 12-4	125
LeCenter															11-1	12-1	2
LeSeuer										K-1 1-1						12-1	3
Madelia					4-1			1-1 3-1	K-1		7-1				12-2		7
Maple River	1-1 3-1 4-2			6-1	5-1	K-1 1-2	4-1 5-2	5-1	K-1 1-1 5-3		7-2 8-3				12-1	9-1 12-1	26
New Ulm					2-1 4-1		4-1		4-1					12-1		11-1 12-1	7

**BREAKDOWN OF STUDENTS ATTENDING MANKATO AREA PUBLIC SCHOOLS
UNDER OPEN ENROLLMENT AND NON-RESIDENT AGREEMENTS
2009-10**

Mankato Area Public Schools																	
RESIDENT DISTRICT	B	EL	F	G	H	J	K	M	R	W	DMMS	EJ	CFS	CHS	WS	ES	TOTAL
Nicollet					2-2 3-2 5-2		4-2	1-1 3-1	4-1		7-1 8-1				9-1 10-1 11-3 12-3	11-1	22
Norwood Young America															9-1		1
NRHEG			4-1														1
Prior Lake							K-1										1
St Clair		1-1 2-1	1-1 6-4	6-2	2-1 3-1 5-1	K-1 4-2 5-2	K-1 1-1 2-3 4-2 5-1		3-1 4-1	2-1 3-1	7-2 8-3	7-1 8-5			9-2 10-2 11-2 12-4	9-3 10-3 11-7 12-7	72
St Peter	K-2 4-1 5-2 6-1	5-1	K-2 3-1 4-1	6-4	2-1	1-2 2-1 3-1	K-1 1-1 2-1 5-1	1-1 3-2 5-1		1-1 2-1 3-1	7-3	7-3 8-2		12-2	9-3 10-1 11-2 12-2	9-1 10-3 11-3 12-2	58
Waseca								K-1									1
WEM		2-1 3-2	3-1 6-2	6-1				2-1			7-1	8-3			9-1 10-1 11-1	9-1	16
Totals	19	17	21	18	24	14	26	21	27	8	46	15	1	4	70	60	391

14

*Note grade level is listed first, followed by number of students in that grade level.

**BREAKDOWN OF MANKATO AREA PUBLIC SCHOOL STUDENTS ATTENDING OTHER DISTRICTS
UNDER OPEN ENROLLMENT AND NON-RESIDENT AGREEMENTS
2009-10**

School Student would Attend-Mankato Area Public Schools														
RESIDENT DISTRICT	EL	F	G	H	J	K	M	R	W	DMMS	EJ	WS	ES	TOTAL
Brooklyn Center (Insight School)												10-1 11-3 12-2	10-1 11-3	10
Cleveland	K-3 1-1 2-2 3-2 4-3 5-6	K-1 2-1 5-1 6-2				1-1				7-1	7-1 8-3		9-3 10-4 11-3	38
Fergus Falls (IQ Academy)										8-2	7-1	9-2	9-1	6
Houston (MN Virtual Academy)		6-1								7-2		9-1 10-1 11-1	10-1 11-2	9
JWP	K-2 5-1	6-1								8-1			10-2	7
LCWM		K-1 3-1	6-1	2-1	3-1				K-1 4-1		7-2	9-1 10-1	10-4 11-2 12-1	18
LeCenter													12-1	1
LeSueur												9-1		1
Madelia								4-1		7-1				2

**BREAKDOWN OF MANKATO AREA PUBLIC SCHOOL STUDENTS ATTENDING OTHER DISTRICTS
UNDER OPEN ENROLLMENT AND NON-RESIDENT AGREEMENTS
2009-10**

Mankato Area Public Schools														
RESIDENT DISTRICT	EL	F	G	H	J	K	M	R	W	DMMS	EJ	WS	ES	TOTAL
Maple River								3-1 5-1	K-1		8-1	9-1 11-1 12-1	9-1 12-3	11
New Ulm		6-1							2-1 4-1					3
Nicollet		6-2	6-1	K-1 1-2 2-2 4-1 5-1		2-1 4-1						9-1 11-1 12-2		16
Park Rapids	5-1													1
St Clair	PK-1 K-2 1-4 2-1 3-5 4-2 5-2	6-9				K-1 3-1			K-2 1-2 2-3 4-2	8-2	7-3 8-6	11-1 12-1	9-6 10-8 11-1 12-3	68
St Peter		2-1 5-1	6-1	1-1 2-1 5-1			1-1		1-1 3-1 5-1	7-1	7-2 8-2	10-1 11-1 12-1	9-1 11-1 12-4	24
Totals	38	23	3	11	3	3	1	3	17	10	21	26	56	215

*Note grade level is listed first, followed by number of students in that grade level.

Mankato Area Public Schools

NonPublic/Charter School Enrollments (Residents)

October 1st 2009

<i>Age/Grade</i>	<i>All Saints</i>	<i>Good Council Campus</i>	<i>Good Shepherd</i>	<i>Grace Christian</i>	<i>Immanuel Lutheran</i>	<i>Mount Olive</i>	<i>Risen Savior</i>	<i>Riverbend Academy</i>	<i>Totals</i>
<i>K</i>	4	48	4	3	6	24	9		98
<i>1</i>	2	36	1	3	8	8	9		67
<i>2</i>	2	37	5	2	2	11	6		65
<i>3</i>	0	37	4	4	7	16	2		70
<i>4</i>	1	43	3	3	4	13	3		70
<i>5</i>		53	1	3	6	16	4		83
<i>6</i>		48	1	4	3	18	2	1	77
<i>7</i>		39	2	2	3	11	1	2	60
<i>8</i>		30		3	3	11	4	4	55
<i>9</i>		33		1	6			1	41
<i>10</i>		43		2	6			11	62
<i>11</i>		25			4			7	36
<i>12</i>		51			9			30	90
									0
TOTALS	9	523	21	30	67	128	40	56	874

HOMESCHOOLING SUMMARY

<u>SCHOOL YEAR</u>	<u>NUMBER OF STUDENTS</u>
1996-97	61
1997-98	86
1998-99	85
1999-00	91
2000-01	101
2001-02	94
2002-03	91
2003-04	123
2004-05	80
2005-06	104
2006-07	104
2007-08	117
2008-09	115
2009-10	136

Mankato Area Public Schools
2009-10 Neighboring School Enrollments

<i>Grade Level</i>	<i>LCWM</i>	<i>Maple River</i>	<i>JWP</i>	<i>St Clair</i>	<i>Cleveland</i>	<i>Nicollet</i>
<i>K</i>	83	74	47	42	27	31
<i>1-6</i>	322	512	243	218	179	153
<i>7-12</i>	345	525	259	267	195	153
<i>2009-10 Totals</i>	750	1111	549	527	401	337
<i>2008-09 Totals</i>	772	1136	532	575	406	307
<i>Difference</i>	-22	-25	17	-48	-5	30