

EAGLE WATCH

MONTHLY NEWSLETTER - MARCH 2020
ATHOL ELEMENTARY SCHOOL
www.lakeland272.org
208-683-2231

4th GRADE
"LEWIS & CLARK"
MUSIC PROGRAM
THURS., MARCH 19
6:30 PM

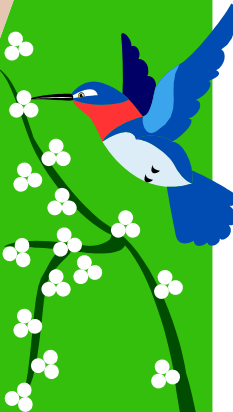
IN THIS ISSUE:

PRINCIPAL'S MESSAGE
PTU "MARDI GRAS" FUNDRAISER
PTU NEWS
LIBRARY NEWS
KINDER WRITINGS
FREE DEVELOPMENTAL SCREENER
BOX TOPS FOR EDUCATION
2020 CENSUS INFO
BREAKFAST MENU
LUNCH MENU
MARCH "2020" CALENDAR

Like us on
Facebook
Like

SPRING BREAK
MARCH 27-APRIL 5
SEE YOU MONDAY,
APRIL 6 @ 10AM
SHARP

MARCH 2020



Principal's Message



Dear Athol Elementary Families,

We are excited to continue with Student-Led Conferences (SLC) again this year!! Your child will lead a conference March 12th to reflect on his or her progress, show you his or her work, and receive feedback. Your child(ren) have the opportunity to share the details of their school day, their academic and behavioral progress, as well as share their goals for the remainder of the school year. You will hear directly from your child about what they love, what they believe are challenges and what steps they are taking to overcome these challenges. Your presence will be vital to our SLC process. Of course, anyone who feels they need a private meeting with a teacher will still be able to schedule one at a later time.

Your attendance demonstrates the importance of our partnership, as well as support for your child(ren) and their learning. Your child(ren) will participate in their conference and this will count for their daily attendance. The school day consists of only the scheduled conference time. During the conference time, Athol Elementary staff will provide child care for siblings for the scheduled conference time only. Busing will NOT be available on this day. Students that attend BASE will have the option of BASE from the hours of 6:30 a.m. to 6:00 p.m. Please respond to the request for information about scheduling. We are counting on 100% participation as we continue student-led conferences.

We look forward to seeing you!

Sincerely,

Mrs. Kathy Thomas, Principal



**Student Led
Conferences
Thursday,
March 12th**

Athol Elementary PTU

Parents & Teachers United



Come and join the fun!!

PTU Meeting Monday

March 23rd - 6 p.m.- Athol Elem. Library



Athol Elementary PTU News and Events!

★ **Taco Lunch** We are doing a Taco Lunch for the teachers and staff during the Student Led Conferences on March 12. If you haven't signed up to bring an item, please do so. We have a link on our Athol Elementary PTU facebook page. You can also email us at atholelementaryptu@gmail.com if you are not on facebook. If you would like to donate, but don't have time to shop, feel free to drop off a donation at the office and we will do the shopping for you. These teachers and staff have a long day during the conferences and this is a small way to say, "Thank YOU!"

★ **WHAT AN AMAZING GROUP OF PARENTS & FAMILIES WE HAVE HERE AT ATHOL ELEMENTARY!** ★

★ Our **MARDI GRAS** fundraiser has been a **HUGE SUCCESS** so far. All of our tables are sold. There are just a few tickets left. email us or order tickets on our website: atholelementaryptu.wixsite.com if you would like to attend! Due to the outpouring of donations, by very generous sponsors, we are 70% of the way to our goal of \$56,000! This new playground equipment will help the students have fun at school but it will help parents too. We are working on an existing project to help the flow of pick-up and drop-off traffic! Stay tuned for more information! If you have any items that you would like to donate to the fundraiser for our live or silent auction, please contact the **PTU via facebook** or **e-mail** and let us know! You can also drop them off at the office no later than March 9. We are an official non-profit now so all donations, monetary or items, are tax deductible.

ALL OF THE MONEY RAISED BY THIS EVENT WILL GO TOWARDS THE NEW PLAYGROUND EQUIPMENT!

★ **Thank you for your support! Our biggest & most extensive fundraiser is successful because of you!** ★

★ If you are interested in purchasing **PTU SWAG** we have colors, styles & sizes available. Shirts, sweatshirts, headbands or hats in stock. Email us or ask at the school office for help. We love to see your Eagle Pride!

★ Join us at our next meeting on March 23rd at 6 PM in the school library. We have lots of fun stuff to plan in the Spring, and we would love your input! It's fun...come & check us out!!!

☺ **Email:** atholelementaryptu@gmail.com ☺ **Fb:** [athol elementary PTU](https://www.facebook.com/atholelementaryptu)

Thanks for all of your support! - Athol Elementary PTU

March Vixen Fundraiser

You are invited to a night of dinner, drinks and fun to raise money for new playground equipment for Athol Elementary. There is still time to purchase tickets.

Phone: 208-683-2231 Email:
atholelementaryptu@gmail.com

March 14, 2020 at 6pm
Athol Community Center
30355 3rd St.

Platinum



Gold



Silver



Music Provided By:

454

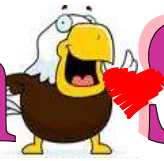
Thank you Sponsors

Catering By:

COUNTRY SNACK SHACK



Kindergarten Student Page



Here's their thoughts on-"What does love mean?"

Wyatt says...*"I think love means to have fun."*

Miley says...*"I love you so much because you are my friend."*

Mary says...*"It means I give heart chocolates in a box."*

Ryan says...*"I love phones. It is fun"*

Grayson says...*"I care about you. I love you."*

Wesley says...*"I am thinking I will make you a picture with hearts."*

Conner says...*"I think it means that you love them."*

Rylee says...*"It means you give hearts."*

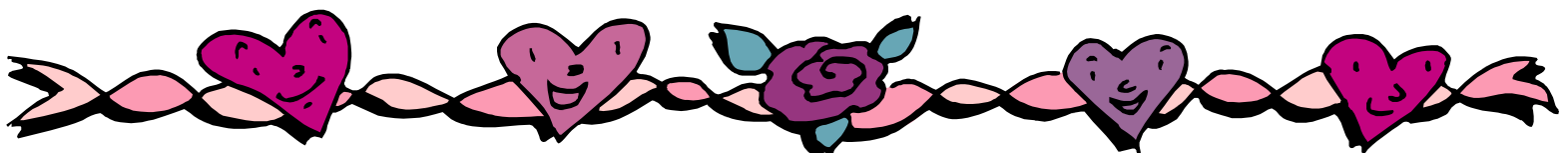
Dylan says...*"I like you. I love you so much. Love you so much!"*

Claire says...*"I think give chocolate, hearts, and give hugs."*

Dawson says...*"I like your hair because it is beautiful."*

Nevaeh says...*"You give them flowers."*

Keadon says...*"I can watch the phone."*





MARCH LIBRARY NEWS

Silverwood “Read 2 Ride” is in full bloom.

Monday, April 13th, is the last day to turn in reading logs.

Happy Reading!!

BOGO BOOK FAIR

When: March 9th-13th

Where: Athol Elementary Library

Time: Monday-10:00-3:30

Tuesday-Wednesday-9:00-3:30

Thursday-8:00am-7:00pm

Friday-9:00-3:30

COME TO OUR
BUY ONE, GET ONE FREE
BOOK FAIR!

Mrs. Berger
Librarian



FREE Developmental Screening



For all children in the
Lakeland
School District
0-5 years old

Screening will provide parents with
information regarding their child's
development in:

speech & language
large & small muscles
concepts
vision and hearing

Where?

Twin Lakes Elementary
5326 W. Rice Road
Rathdrum, ID 83858

When?

February 24, 2020
March 16, 2020

Sponsored by:

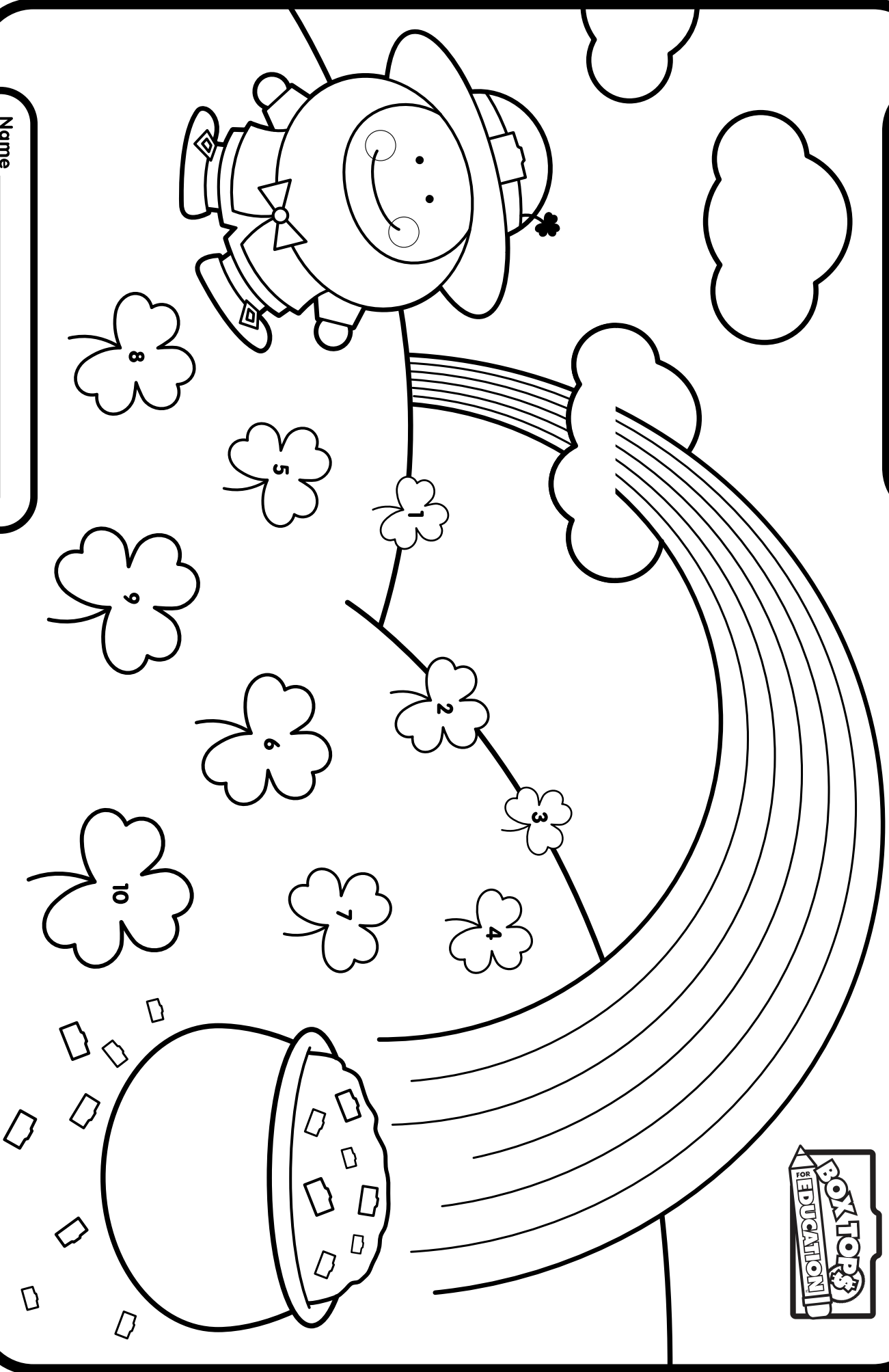
Lakeland School District
North Idaho College Head Start
Infant Toddler Program
Mountain States Early Head Start

How?

Call (208) 687-1682
to schedule an
appointment

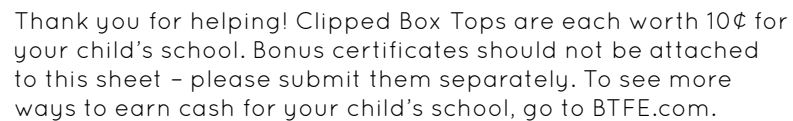
For all children in the Lakeland School District (including those that are home-schooled and those in private-school setting)
between the ages of 3 and 21 years
who may have individual needs that result from disabilities and may benefit from special services or related services,
please contact Special Services at (208) 687-0431 for details on the referral process.

**Box Tops are as good
as gold for your school!**



Name _____
Grade _____
Teacher's Name _____

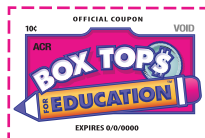
Thank you for helping! Every Box Top you collect is worth 10¢ for your school.
For more collection worksheets and projects, go to www.boxtops4education.com/activitycenter





LOOK FOR BOX TOPS ON HUNDREDS OF PRODUCTS!

THE ALL-NEW BOX TOPS IS HERE!
DOWNLOAD THE APP:



CLIP: Traditional Box Tops clips are being phased out of production, but you can still send unexpired clips to school. Every valid Box Tops clip is worth 10¢.



SCAN: If you see this label, **do not send it to school.** Use the new Box Tops app to scan your store receipt within 14 days of purchase. The app will find participating products and instantly add Box Tops to your school's earnings online.



BEVERAGES

- Nestle Pure Life Water .5-Liter 24, 28, 32,35-Packs
- Nestle Pure Life Water 8 oz. 6, 12, 24 & 56-Packs
- Nestle Pure Life Water 11.15 oz 6-Pack



HOUSEHOLD CLEANING

- Lysol® Disinfectant Spray
- Lysol® Disinfecting Wipes
- Lysol® Toilet Bowl Cleaner



MEALS & SIDES

- Annie's® Baking Mix
- Annie's® Brownie Mix
- Annie's® Cake Mix
- Annie's® Cookie Mix
- Annie's® Mac & Cheese
- Annie's® One Pot Pasta
- Annie's® Soup
- Hamburger Helper™
- Chicken Helper™
- Tuna Helper™
- Old El Paso™ Beans
- Old El Paso™ Taco Kit
- Old El Paso™ Tortillas
- Old El Paso™ Shells



SNACKS

- Annie's® Bunny Cookies
- Annie's® Bunny Grahams
- Annie's® Cheddar Bunnies
- Annie's® Cheddar Squares
- Annie's® Cookies
- Annie's® Crackers
- Annie's® Fruit Snacks
- Annie's® Granola Bars
- Annie's® Popcorn
- Annie's® Snack Bars
- Annie's® Snack Mix
- Bugles™
- Cascadian Farm™ Granola
- Cascadian Farm™ Granola Bars
- Cascadian Farm™ Protein Bars
- Cereal Treat Bars
- Chex™ Mix
- Fiber One™ Bars
- Fiber One™ Brownies
- Fiber One™ Cheesecake Bars
- Fiber One™ Cookies
- Food Should Taste Good™ Chips
- Fruit by the Foot™
- Fruit Roll-Ups™
- Gardetto's™
- General Mills™ Fruit Snacks
- Gushers™
- LARABAR™ Kid
- Mott's® Fruit Snacks
- Nature Valley™ Bars
- Nature Valley™ Biscuits
- Nature Valley™ Bites
- Nature Valley™ Granola Cups
- Nature Valley™ Layer Bars
- Nature Valley™ Snack Mix
- Nature Valley™ Squares
- Nature Valley™ Wafer Bars



CEREAL & BREAKFAST

*Bagged cereals do not participate

- Ancient Grains Cheerios™
- Annie's® Cereal
- Annie's® Toaster Pastries
- Apple Cinnamon Cheerios™
- Apple Cinnamon Toast Crunch™
- Banana Nut Cheerios™
- Basic 4™ Cereal
- Big G Cereal Breakfast Pack (8 Pouches)
- Berry Berry Kix™
- Birthday Cake Cookie Crisp™
- Blueberry Cheerios™
- Blueberry Chex™
- Blueberry Toast Crunch™
- Boo Berry™
- Cascadian Farm Cereal™
- Cheerios™
- Cheerios™ Oat Crunch Cinnamon
- Chocolate Cheerios™
- Chocolate Chex™
- Chocolate Lucky Charms™
- Chocolate Peanut Butter Cheerios™
- Chocolate Toast Crunch™
- Cinnamon Chex™
- Cinnamon Toast Crunch™
- Cinnamon Toast Crunch™ Churros
- Cinnamon Toast Crunch™ Shreds
- Cocoa Puffs™ Cereal
- Cookie Crisp™ Cereal
- Corn Chex™ Cereal
- Count Chocula™
- Dippin Dots™ Cereal
- Drumstick™ Cereal
- Fiber One™ Cereal
- Fillows™ Cereal
- Franken Berry™
- French Toast Crunch™
- Frosted Cheerios™
- Frosted Lucky Charms™
- Fruity Cheerios™
- Girl Scouts™ Cereal
- Golden Grahams™
- Honey Kix™
- Honey Nut Cheerios™
- Honey Nut Cheerios™ Crunch
- Honey Nut Chex™
- Kix™ Cereal
- Lucky Charms™
- Maple Cheerios™
- Mermaid Cereal
- Multigrain Cheerios™
- Nature Valley™ Cereal
- Nature Valley™ Granola
- Oatmeal Crisp™ Cereal
- Peach Cheerios™
- Peanut Butter Chex™
- Peanut Butter Chocolate Shreds™ Cereal
- Protein Cheerios™ Oat & Honey
- Pumpkin Spice Cheerios™
- Raisin Nut Bran™
- Reese's Puffs™
- Rice Chex™
- Star Wars™ Cereal
- Strawberry Toast Crunch™
- Sugar Cookie Toast Crunch™
- Toasted Coconut Cheerios™
- Total™ Cereal
- Trix™ Cereal
- Vanilla Chex™
- Very Berry Cheerios™
- Wheat Chex™
- Wheaties™



FROZEN

- Annie's® Bagel Pizzas
- Annie's® Pizza Bagels
- Annie's® Pizza Poppers
- Cinnamon Toast Crunch™ Bites
- Pillsbury™ Mini Cinnis
- Pillsbury™ Pancakes
- Pillsbury™ Toaster Scambles
- Pillsbury™ Toaster Strudel
- Totino's™ Party Pizza (4-pack only)
- Totino's™ Pizza Rolls



REFRIGERATED & DAIRY

- Annie's® Biscuits
- Annie's® Cinnamon Rolls
- Annie's® Crescent Rolls
- Yoplait® Go-GURT® Yogurt
- Yoplait® Go-Gurt® Dunkers
- Yoplait® Kid
- Yoplait® Multipack



SCHOOL & OFFICE SUPPLIES

- Boise® POLARIS® Premium Paper
- Boise® X-9® Paper
- Paper Mate® Arrowhead® Erasers
- Paper Mate® Clearpoint® Mechanical Pencils
- Paper Mate® Colored Pencils
- Paper Mate® Comfortmate Ultra™
- Paper Mate® Correction Pens
- Paper Mate® DryLine® Products
- Paper Mate® Eagle® Pens
- Paper Mate® Eraser Mate®
- Paper Mate® Expressions® Erasers
- Paper Mate® Flair® Felt Tip Pens
- Paper Mate® Flexgrip® Elite
- Paper Mate® Flexgrip® Ultra
- Paper Mate® Gel Pens
- Paper Mate® Flexgrip® RT
- Paper Mate® Handwriting
- Paper Mate® Holiday
- Paper Mate® Infinite Lead
- Paper Mate® Inkjoy® Ballpoint Pens
- Paper Mate® Inkjoy® Gel Pens
- Paper Mate® Inkjoy® Stylus 2-in-1
- Paper Mate® Lead Refills
- Paper Mate® Liquid Flair®
- Paper Mate® Liquid Paper® Fast Dry
- Paper Mate® Markers
- Paper Mate® Mirado® Woodcase Pencils
- Paper Mate® Pens
- Paper Mate® Pink Pearl® & White Pearl® Erasers
- Paper Mate® Profile®
- Paper Mate® Profile® Elite
- Paper Mate® Quick Flip™
- Paper Mate® Sharpwriter® Mechanical Pencils
- Paper Mate® Speederase
- Paper Mate® Write Bros. Pens
- Paper Mate® Write Bros. Mechanical Pencils

CLIP-ONLY PRODUCTS

A few brands have opted not to participate in the digital program; however, you can still find Box Tops clips on these products during the packaging transition. Be sure to send them to your school before they expire.

- Select Finish® Products
- Select Hefty® Products
- Select Kleenex® Products
- Select Reynolds® Products
- Select Scott® Products
- Select Ziploc® Products

They grow up so fast.

Now's your chance to shape their future.



A kindergartener counted in the 2020 Census this spring will be starting high school when the next census comes around in 2030: That's 10 years of school supplies, teachers, school lunches, and so much more. This is your opportunity to help ensure they have a bright future.

Right now, students across the country are getting an introduction to the 2020 Census through the Statistics in Schools program. This program offers free activities and resources to schools to help prepare their students for an increasingly data-driven world.

Students are learning that the 2020 Census is a count of every person who lives in the United States and its territories. Responding to the census helps your community get its fair share of funding. Census data guides how more than \$675 billion in federal funding is distributed to states and communities each year for schools, health care facilities, roads, transportation, recreation centers, social services, and more.

On Census Day, April 1, 2020, start shaping your future and the future of all children by counting everyone in your home.

Learn more about how you can shape your future at [2020CENSUS.GOV](https://2020census.gov).

Get more information about the Statistics in Schools program at [CENSUS.GOV/SCHOOLS](https://census.gov/schools).

Students are also learning these key things about the 2020 Census—and we want you to know them too:

- Starting in March 2020, everyone living in your home needs to be counted. That includes children and newborn babies, citizens and noncitizens, relatives and nonrelatives, and even those staying with you temporarily.
- It's easier than ever to respond to the census. You can respond in 13 different languages, and you can complete it online, by phone, or by mail.
- Your responses to the census are safe and secure. The law requires the U.S. Census Bureau to keep your information confidential, and your responses cannot be used against you in any way.



Shape
your future
START HERE >

United States
Census
2020



Lakeland School District Elementary March Breakfast Menu

This institution is an equal opportunity provider.

Monday	Tuesday	Wednesday	Thursday	Friday
<p>2</p> <p>Fruit Smoothie Whole Grain Muffin</p> <p>Assorted Cereal Whole Grain Muffin</p> <p>Orange Wedges Assorted Chilled Fruit 100% Fruit Juice</p>	<p>3</p> <p>Pancake on a Stick w/Maple Syrup</p> <p>Assorted Cereal Whole Grain Toast</p> <p>Orange Wedges Assorted Chilled Fruit 100% Fruit Juice</p>	<p>4</p> <p>Breakfast Pizza</p> <p>Assorted Cereal Whole Grain Muffin</p> <p>Orange Wedges Assorted Chilled Fruit 100% Fruit Juice</p>	<p>5</p> <p>Whole Grain Waffle w/Maple Syrup Scrambled Eggs</p> <p>Assorted Cereal Whole Grain Toast</p> <p>Orange Wedges Assorted Chilled Fruit 100% Fruit Juice</p>	<p>6</p> <p>Biscuits & Gravy</p> <p>Assorted Cereal Strawberry Banana Yogurt</p> <p>Orange Wedges Assorted Chilled Fruit 100% Fruit Juice</p>
<p>9</p> <p>Whole Grain Frosted Pop-Tart Yogurt</p> <p>Assorted Cereal Yogurt</p> <p>Orange Wedges Assorted Chilled Fruit 100% Fruit Juice</p>	<p>10</p> <p>Breakfast Pizza</p> <p>Assorted Cereal Whole Grain Muffin</p> <p>Orange Wedges Assorted Chilled Fruit 100% Fruit Juice</p>	<p>11</p> <p>Whole Grain French Toast Sticks w/Maple Syrup Assorted Cereal  String Cheese</p> <p>Orange Wedges Assorted Chilled Fruit 100% Fruit Juice</p>	<p>12</p> <p>No School</p>	<p>13</p> <p>Biscuits & Gravy</p> <p>Assorted Cereal Strawberry Banana Yogurt</p> <p>Orange Wedges Assorted Chilled Fruit 100% Fruit</p>
<p>16</p> <p>Fruit Smoothie Whole Grain Muffin</p> <p>Assorted Cereal Whole Grain Muffin</p> <p>Orange Wedges Assorted Chilled Fruit 100% Fruit Juice</p>	<p>17</p> <p>Pancake on a Stick w/Maple Syrup Assorted Cereal Whole Grain Toast</p> <p>Orange Wedges Assorted Chilled Fruit 100% Fruit Juice</p>	<p>18</p> <p>Whole Grain Frosted Pop-Tart String Cheese </p> <p>Assorted Cereal String Cheese</p> <p>Orange Wedges Assorted Chilled Fruit 100% Fruit Juice</p>	<p>19</p> <p>Whole Grain Pancake w/Maple Syrup  Scrambled Eggs</p> <p>Assorted Cereal Whole Grain Toast</p> <p>Orange Wedges Assorted Chilled Fruit 100% Fruit Juice</p>	<p>20</p> <p>Biscuits & Gravy</p> <p>Assorted Cereal Strawberry Banana Yogurt</p> <p>Orange Wedges Assorted Chilled Fruit 100% Fruit Juice</p>
<p>23</p> <p>Fruit Smoothie Whole Grain Muffin</p> <p>Assorted Cereal Whole Grain Muffin</p> <p>Orange Wedges Assorted Chilled Fruit 100% Fruit Juice</p>	<p>24</p> <p>Breakfast Pizza</p> <p>Assorted Cereal Whole Grain Muffin</p> <p>Orange Wedges Assorted Chilled Fruit 100% Fruit Juice</p>	<p>25</p> <p>Whole Grain French Toast Sticks w/Maple Syrup  Assorted Cereal String Cheese</p> <p>Orange Wedges Assorted Chilled Fruit 100% Fruit Juice</p>	<p>26</p> <p>Egg & Cheese Breakfast Sandwich</p> <p>Assorted Cereal Whole Grain Toast</p> <p>Orange Wedges Assorted Chilled Fruit 100% Fruit Juice</p>	<p>27</p> <p>No School</p>
<p>30</p> <p>Spring Break</p>	<p>31</p> <p>Spring Break</p>		<p> Vegetarian</p>	<p> We support Local Farmers!</p>



Elementary Lunch Menu March 2020

Student Lunch \$2.80 ** Reduced Price \$0.40 ** Adult \$4.00

The Discovery Kitchen theme this month is Plant Power. The information we're providing this month is intended to teach students, parents, teachers, and café associates, like you, about some of the many benefits of eating a diet rich in plant foods. Plant foods include fruits, vegetables, grains, legumes, nuts, and seeds. This month, we will be sharing information related to the nutritional benefits of plant foods, fun facts about how certain foods are produced, and the impact that eating more plants has on our well-being and the well-being of the planet. We will also be promoting a variety of delicious, plant-forward dishes to inspire everyone to eat more plants.

Monday	Tuesday	Wednesday	Thursday	Friday
2-Mar BBQ Chicken Served w/ mashed potatoes, dinner roll & cinnamon glazed carrots Fruit and Vegetable Bar Assorted Milk	3-Mar Pancake Day! Pancakes w/Maple Syrup Sausage Patty Scrambled Eggs, Warm Baked Apples Fruit and Vegetable Bar Assorted Milk	4-Mar Spaghetti & Meatballs Savory Green Beans & Dinner Roll Fruit and Vegetable Bar Assorted Milk	5-Mar Booklyn Style Pepperoni Pizza Fruit and Vegetable Bar Assorted Milk	6-Mar Turkey & Cheese Stromboli Seasoned Corn Fruit and Vegetable Bar Assorted Milk
9-Mar Cheeseburger Baked Potato Wedges Fruit and Vegetable Bar Assorted Milk	10-Mar French Toast Sticks w/ Maple Syrup Sausage Patty Fruit and Vegetable Bar Assorted Milk	11-Mar Ham & Cheese Bagel Tomato Soup Fruit and Vegetable Bar Assorted Milk	12-Mar <i>No School K-8</i> Student Lead Conferences	13-Mar Crispy Chicken Sandwich Seasoned Corn Fruit and Vegetable Bar Assorted Milk
16-Mar Shepherds Pie Served w/ mashed potatoes, dinner roll & steamed peas Fruit and Vegetable Bar Assorted Milk	17-Mar Pancake Day! Pancakes w/Maple Syrup Sausage Patty Scrambled Eggs, Warm Baked Apples Fruit and Vegetable Bar Assorted Milk	18-Mar Homemade Butternut Squash Mac & Cheese Dinner Roll Fruit and Vegetable Bar Assorted Milk	19-Mar Homemade Cheese Pizza Seasoned Corn Fruit and Vegetable Bar Assorted Milk	20-Mar Parfait: Creamy Yogurt Homemade Granola & Fruit
23-Mar Pancake Day! Pancakes w/Maple Syrup Sausage Patty Scrambled Eggs, Warm Baked Apples Fruit and Vegetable Bar Assorted Milk	24-Mar BBQ Chicken Served w/ mashed potatoes, dinner roll & Seasoned Corn Fruit and Vegetable Bar Assorted Milk	25-Mar Spaghetti & Meatballs Savory Green Beans & Dinner Roll Fruit and Vegetable Bar Assorted Milk	26-Mar Booklyn Style Pepperoni Pizza Fruit and Vegetable Bar Assorted Milk	27-Mar Spring Break
A full student lunch includes a choice of entrée supplying protein and whole grain, up to three (3) vegetable side dishes, one (1) fruit side dish, and milk. Milk choices include 1% white and skim chocolate. A cold vegetable and fruit bar is available daily on which we feature a variety of vegetables and fruits including locally grown when seasonally available. Each week we feature deeply colored, nutrient-rich vegetables including red/orange and dark green varieties, as well as beans and other additional choices. We also offer at least one hot vegetable daily on our serving line.				
Mondays Alt Entrées	Tuesdays Alt Entrées	Wednesdays Alt Entrées	Thursdays Alt Entrées	Fridays Alt Entrées
Chicken Nuggets Fun Lunch: Cereal & Yogurt & Cheese Fun Lunch	Cheese Pizza Deli Sandwich	Chicken Nuggets Fun Lunch: Cereal & Yogurt & Cheese Fun Lunch	Hot Dog Chicken Caesar Wrap	Soft Baked Pretzel w/ Cheese Sauce Deli Sandwich
Daily Fruit and Vegetable Bar Offerings				
Tossed Salad Fresh Baby Carrots Power Peas Fresh Fruit Chilled Fruit	Romaine & Spinach Salad Broccoli Florets Roasted Garbanzo Beans Fresh Fruit Chilled Fruit	Tossed Salad Fresh Baby Carrots Corn Salad with Ranch Fresh Fruit Chilled Fruit	Romaine & Spinach Salad Broccoli Florets Fresh Fruit Chilled Fruit	Tossed Salad Fresh Baby Carrots Cucumber Apple Salad Fresh Fruit Chilled Fruit

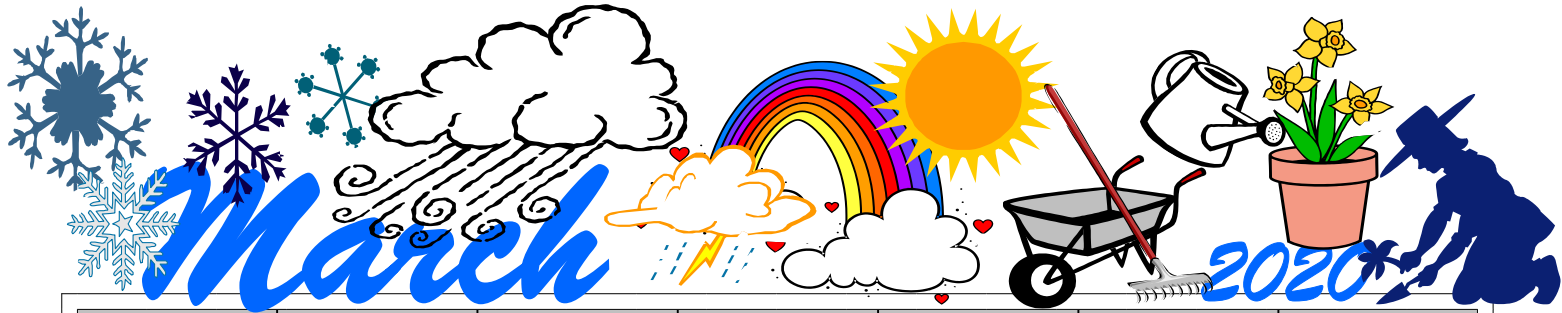


Did You Know?

On average, plant foods contain 64 times the antioxidant levels of animal foods! Antioxidants protect our bodies against harmful substances and keep us healthy.

This
Institution is an
equal opportunity
provider.

View your menu online at:
lakeland272.nutrislice.com



Sun	Mon	Tue	Wed	Thu	Fri	Sat
1	2	3	4	5	6 POPCORN DAY	7
8 Daylight Savings Time Begins. Set your clocks AHEAD 1 HOUR. 	9	10 Wrestling Program - Grades 4-6 March 10th-March 19th Tues, Weds & Thurs - 3:30-4:30	11	12 STUDENT LED CONFERENCES Students will only attend during their scheduled conference time. <u>NO Wrestling today-Conferences</u>	13 POPCORN DAY	14 PTU MARDI GRAS FUNDRAISER DINNER Athol Community Center - 6pm
15	16	17 St. Patrick's Day Wrestling Program - Grades 4-6 March 10th-March 19th Tues., Weds. & Thurs. - 3:30-4:30	18	19 LEWIS & CLARK 4th Gr. Music Program-6:30pm 	20 POPCORN DAY 1st Day of Spring 	21
22	23 PTU Mtg. 6pm 	24	25	26	27 NO SCHOOL Teacher Work Day	28
29	30 NO SCHOOL	31 NO SCHOOL	April 1	April 2	April 3	

Spring Break
March 27th - April 5th

Have a safe, but fun filled break.
 See you bright & early on Monday, April 6 @ 10am

