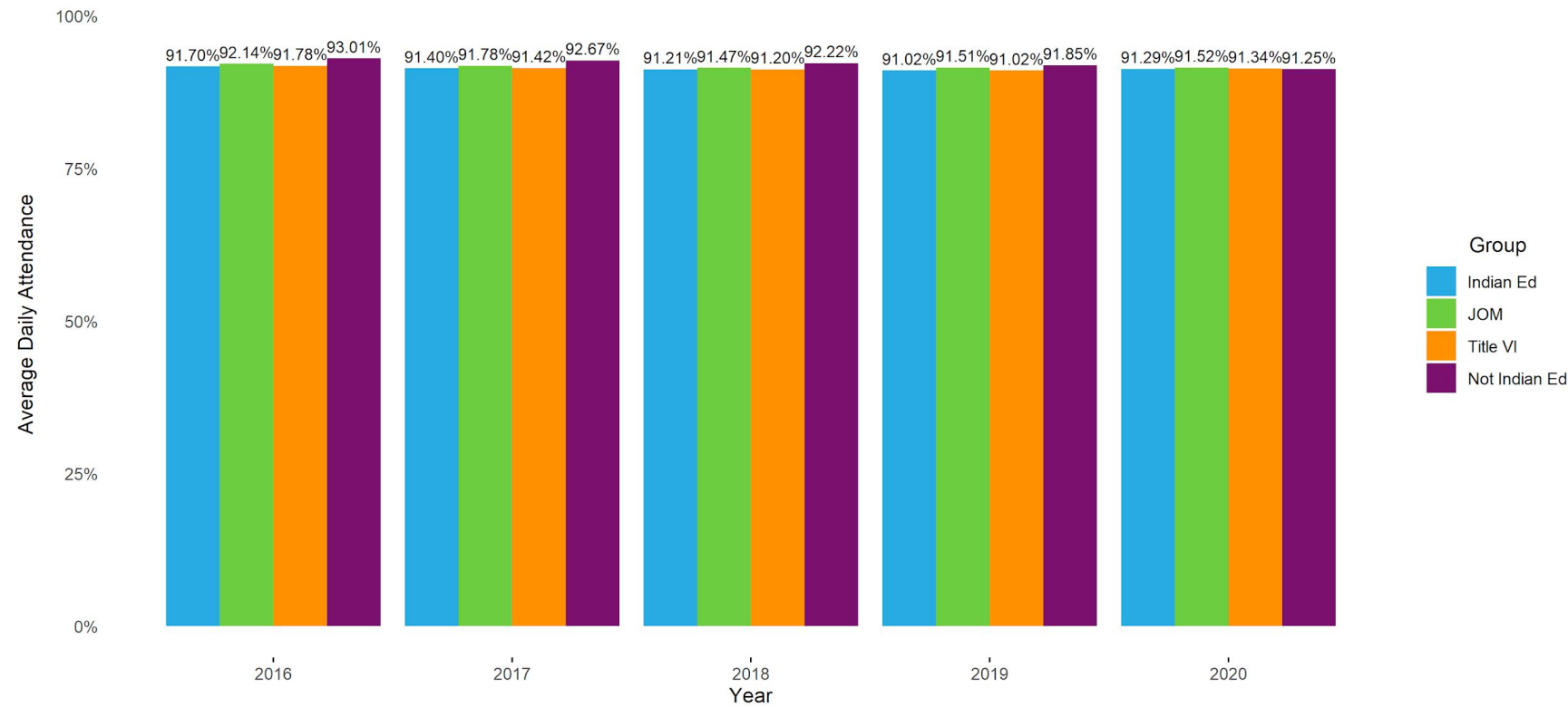


Tulsa Public Schools Indian Education Program Community Meeting

Data up-to-date as of March 10, 2020

District-Level

Average daily attendance for Quarter 3 by year



• Average Daily Attendance (ADA) = Total days attended / total enrolled school days, as of end of quarter 3 for each year (early March).

Chronic absenteeism for Quarter 3 by year



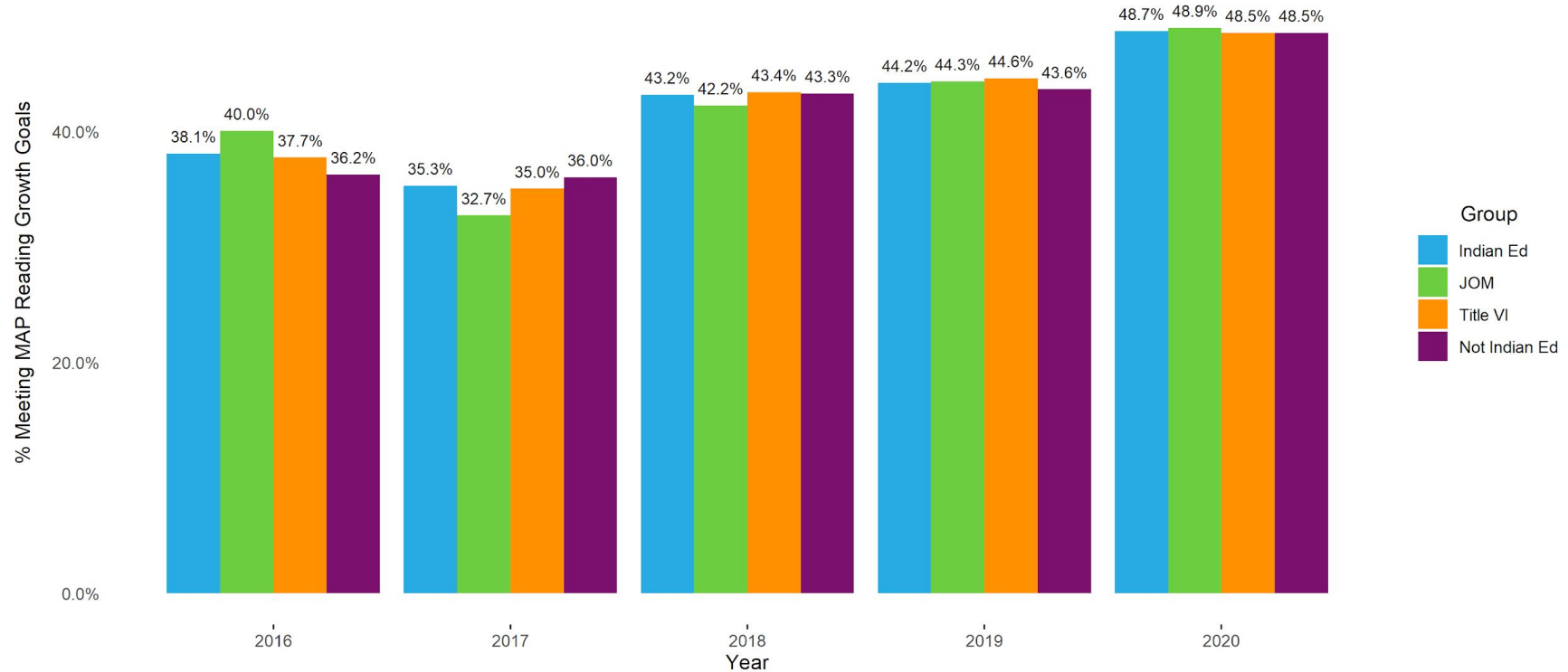
- Chronic Absenteeism rate = % of students who have been absent 10% or more of the school days they have been enrolled, as of end of quarter 3 for each year (early March).

Percent of students met MAP projected math growth for Quarter 3 by year



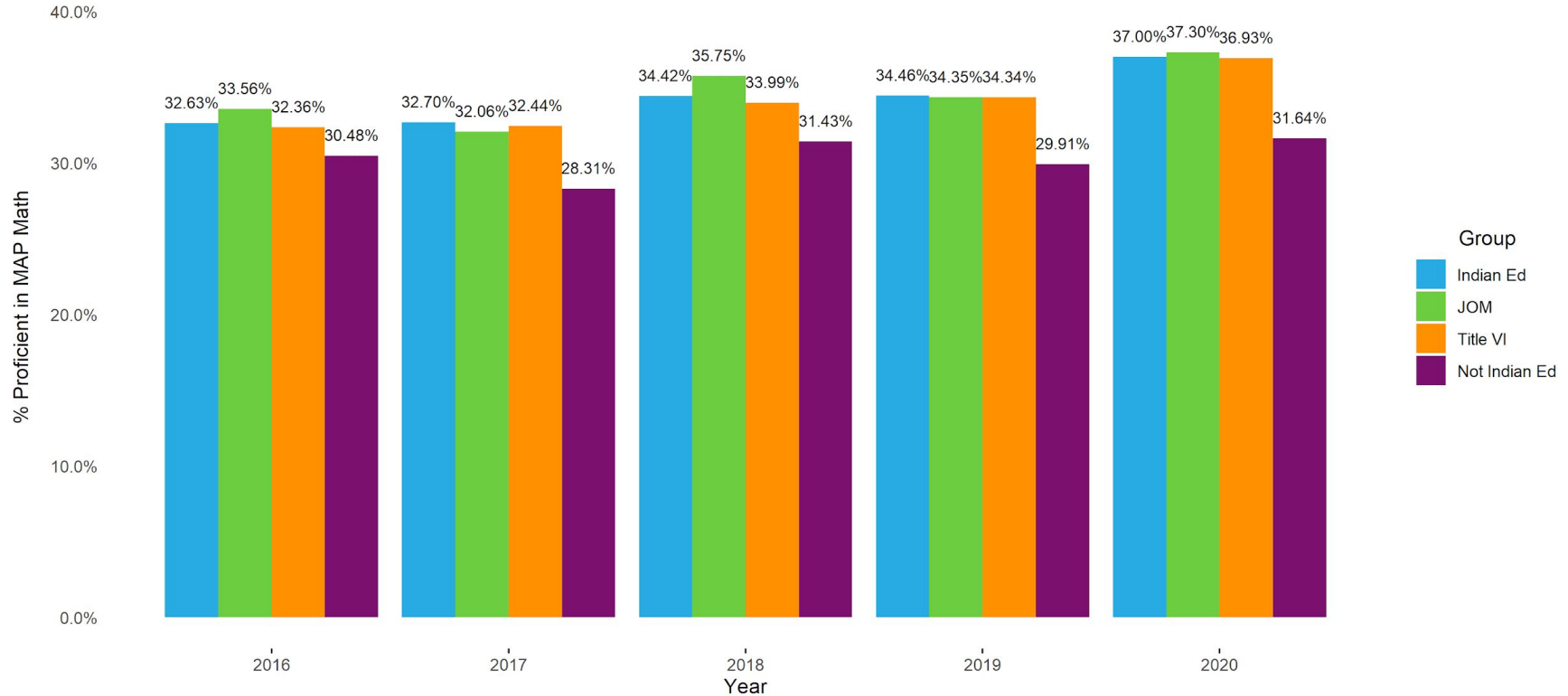
- MAP rigorously normalizes scores against test-takers nationwide.
- Growth goals represent the scores needed to maintain rank against test-takers nationwide; nationally, 50% of students meet their projected growth.
- MAP administration limited to K-3 grades prior to SY 2018.
- District-wide K-10 MAP administration initiated in SY 2018.

Percent of students met MAP projected reading growth for Quarter 3 by year



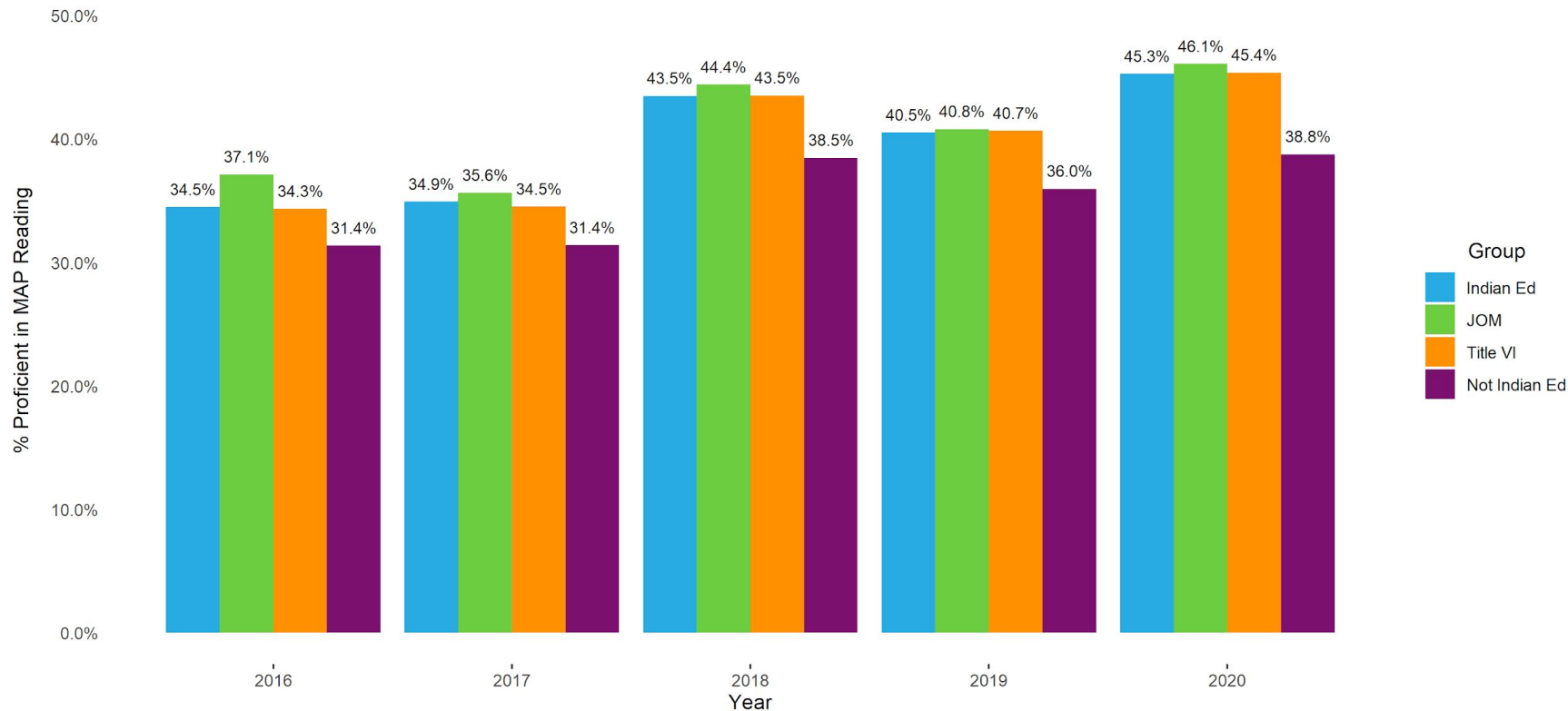
- MAP rigorously normalizes scores against test-takers nationwide.
- Growth goals represent the scores needed to maintain rank against test-takers nationwide; nationally, 50% of students meet their projected growth
- MAP administration limited to K-3 grades prior to SY 2018.
- District-wide K-10 MAP administration initiated in SY 2018.

Percent of students proficient in MAP math for Quarter 3 by year



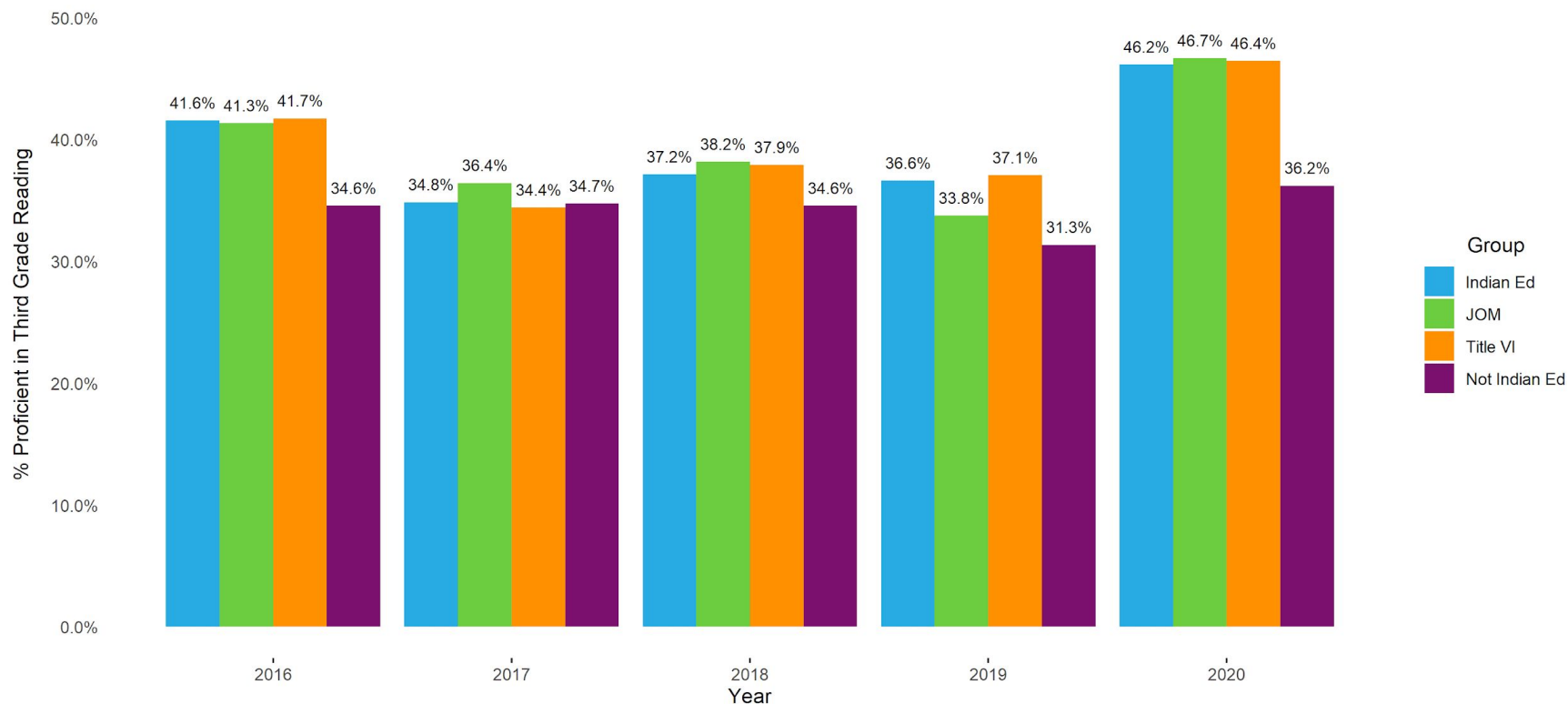
- Students who are ranked in the top 50% (national-normed) of test-takers are classified as 'proficient'.
- MAP administration limited to K-3 grades prior to SY 2018.
- District-wide K-10 MAP administration initiated in SY 2018.

Percent of students proficient in MAP reading for Quarter 3 by year



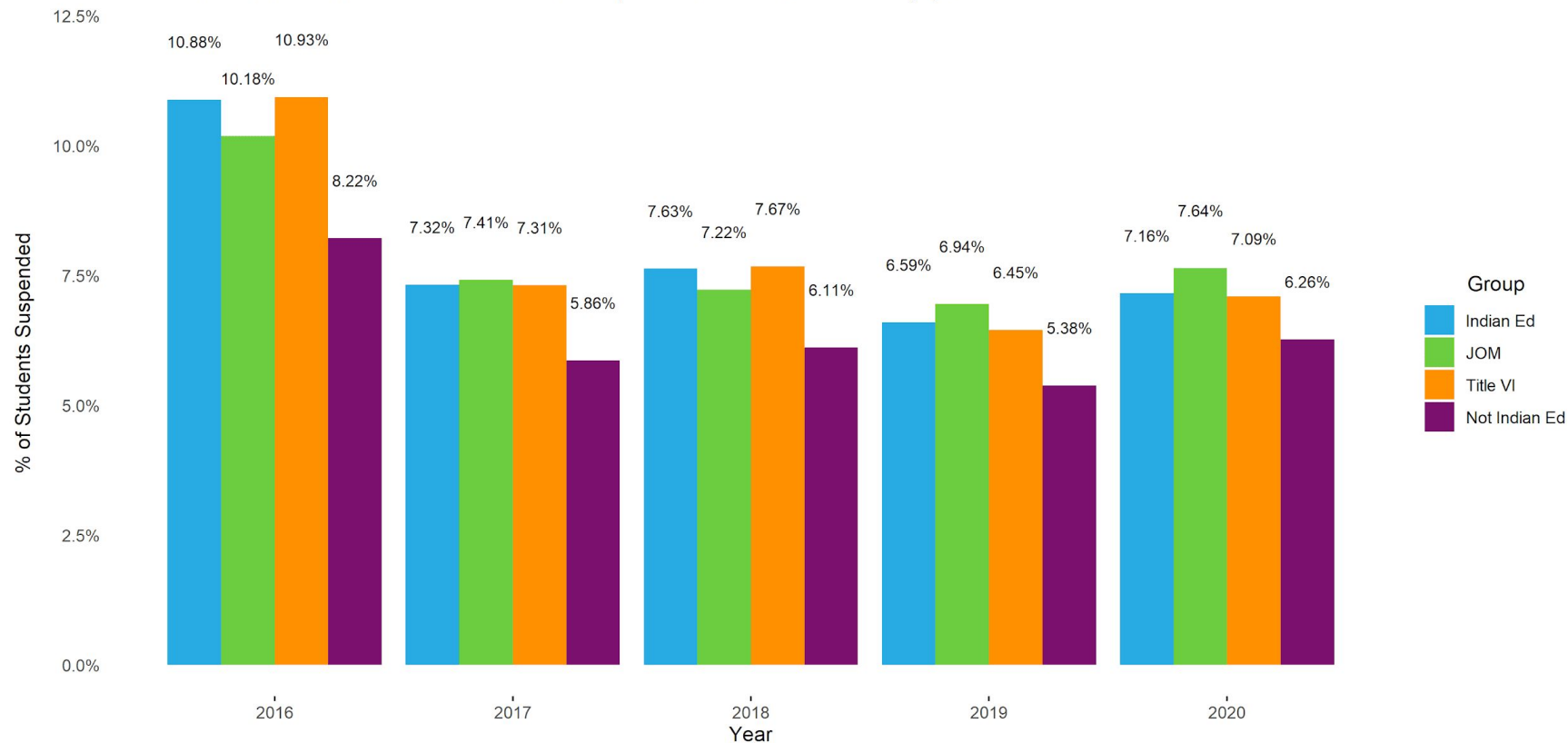
- Students who are ranked in the top 50% (national-normed) of test-takers are classified as 'proficient'.
- MAP administration limited to K-3 grades prior to SY 2018.
- District-wide K-10 MAP administration initiated in SY 2018.

Percent of students proficient in third grade reading for Quarter 3 by year



- Students who are ranked in the top 50% (national-normed) of test-takers are classified as 'proficient'.
- For the set of academic metrics tracked, Tulsa Public Schools specifically focuses on Third-Grade reading proficiency as a high priority.

Percent of students with at least one suspension for Quarter 3 by year



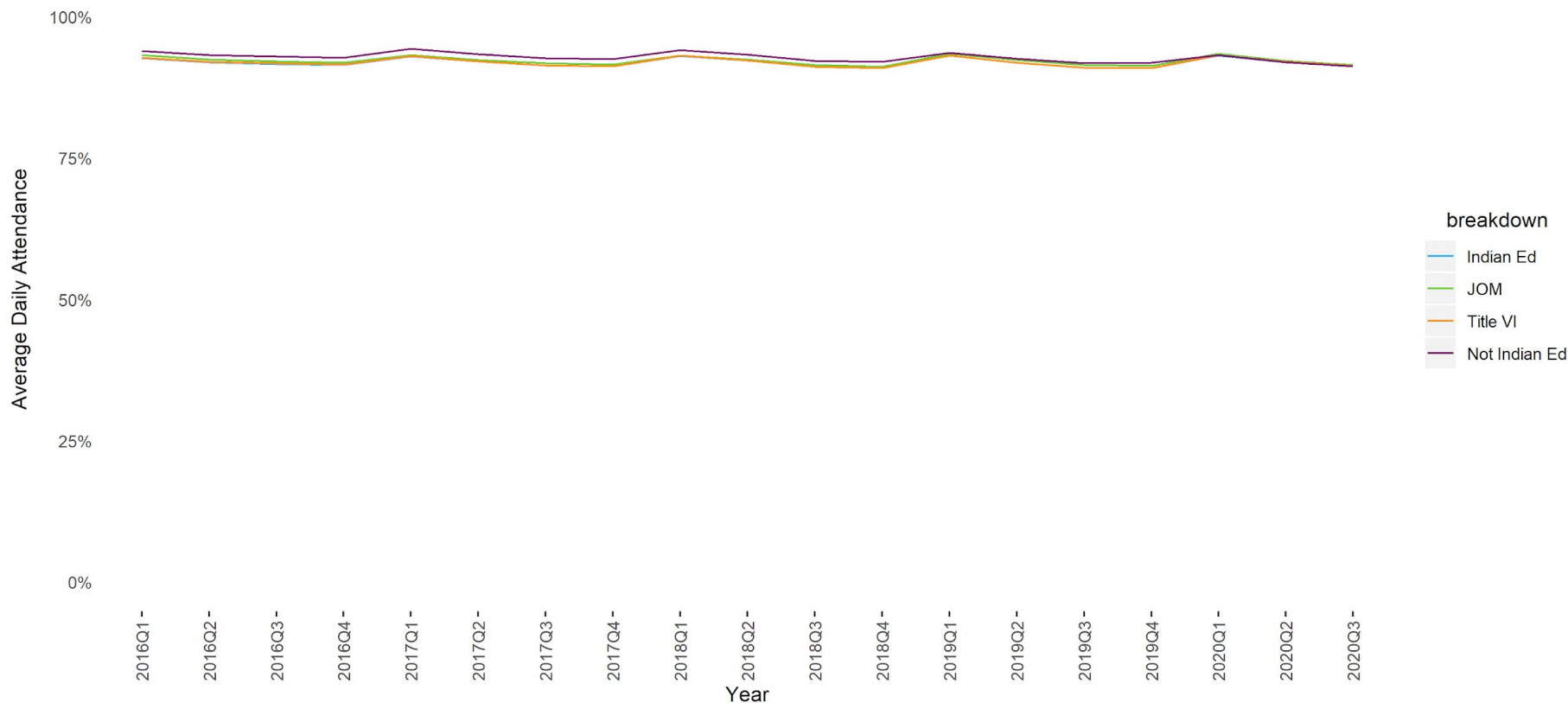
- Total percent of students suspended as of quarter 3 each year (early March).

Tulsa Public Schools Indian Education Program Community Meeting

Data up-to-date as of March 10, 2020

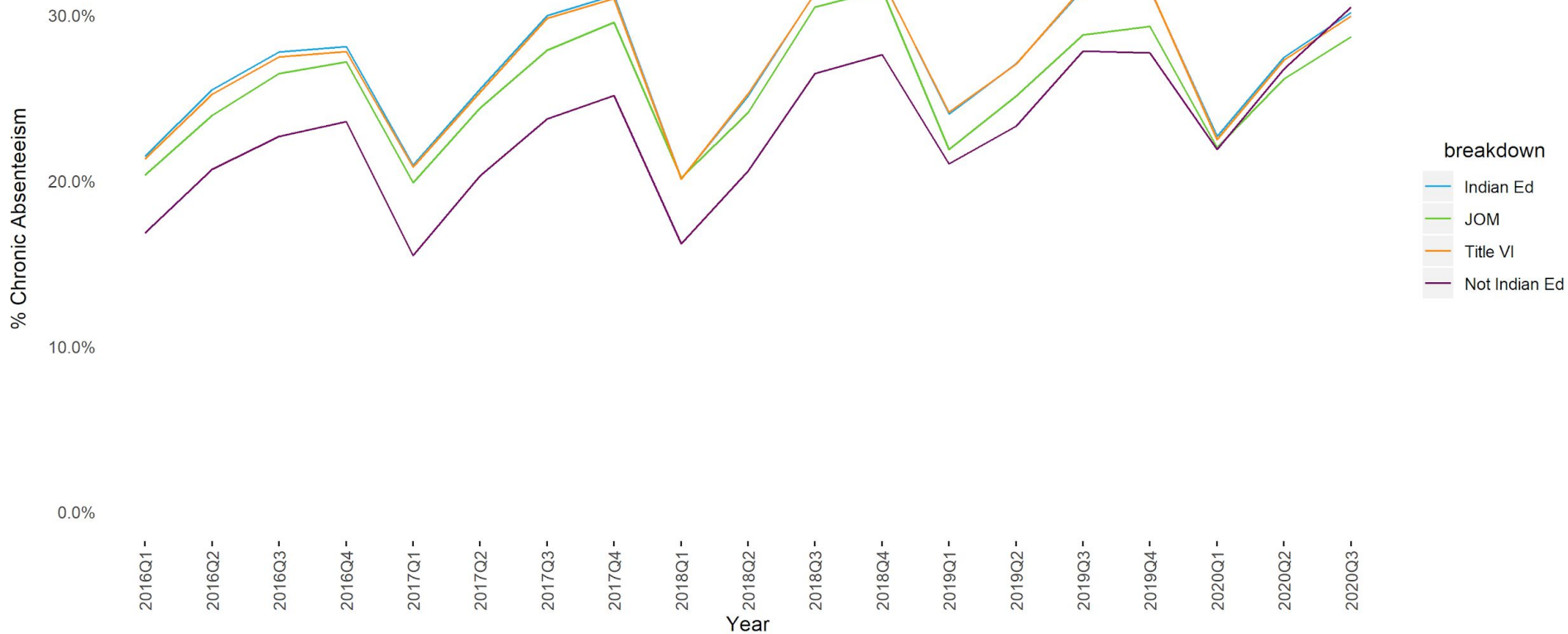
District-Level (All Quarters)

Average daily attendance by quarter for the last 5 years



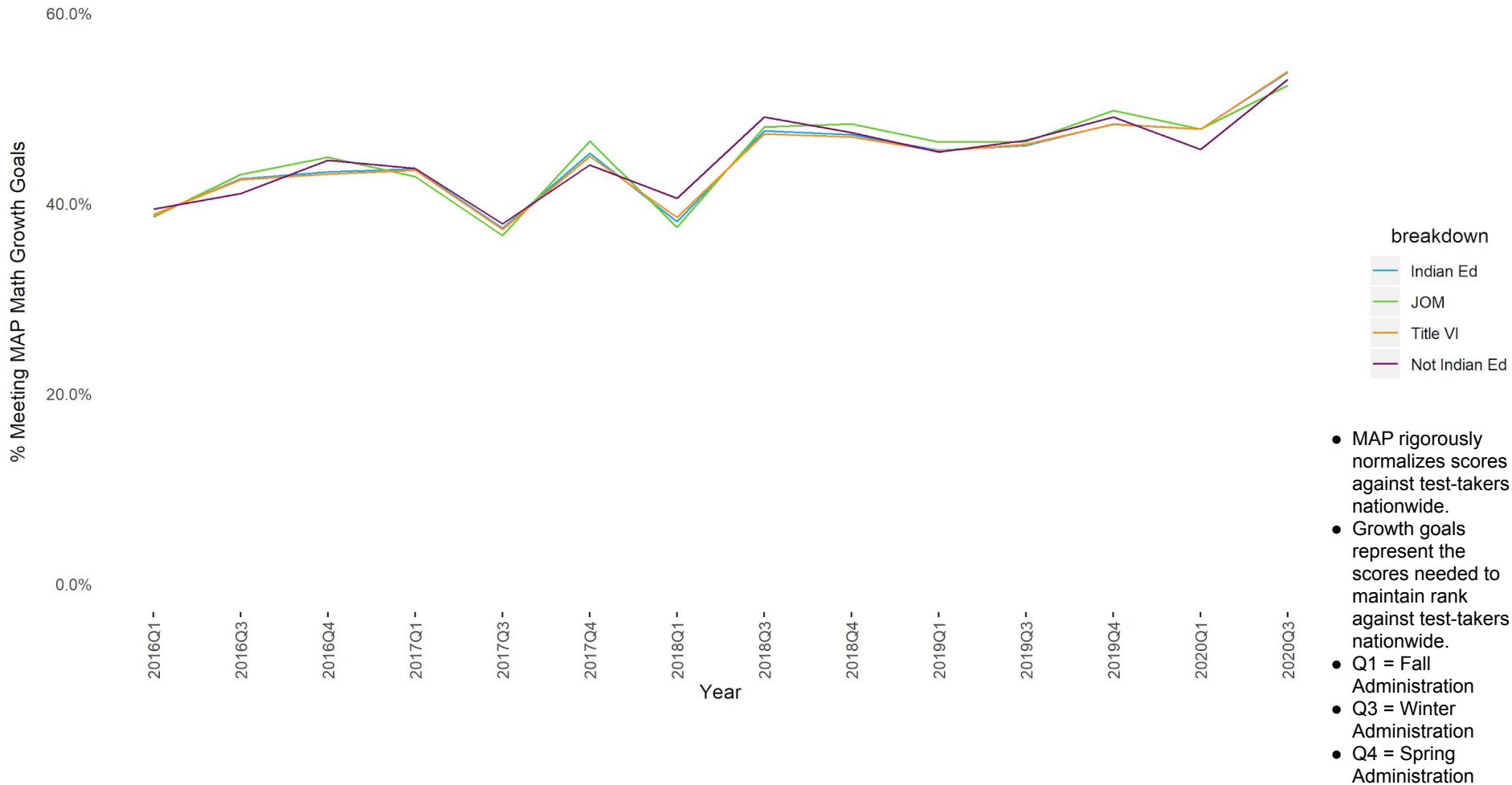
- Average Daily Attendance (ADA) = Total days attended / total enrolled school days, as of end of quarter 3 for each year (early March).

Chronic absenteeism by quarter for the last 5 years



- Chronic Absenteeism rate = % of students who have been absent 10% or more of the school days they have been enrolled, as of end of quarter 3 for each year (early March).

Percent of students met MAP projected math growth by quarter for the last 5 years



Percent of students met MAP projected reading growth by quarter for the last 5 years

% Meeting MAP Reading Growth Goals

40.0%

20.0%

0.0%

2016Q1 -

2016Q3 -

2016Q4 -

2017Q1 -

2017Q3 -

2017Q4 -

2018Q1 -

2018Q3 -

2018Q4 -

2019Q1 -

2019Q3 -

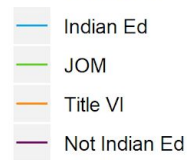
2019Q4 -

2020Q1 -

2020Q3 -

Year

breakdown



- MAP rigorously normalizes scores against test-takers nationwide.
- Growth goals represent the scores needed to maintain rank against test-takers nationwide.
- Q1 = Fall Administration
- Q3 = Winter Administration
- Q4 = Spring Administration

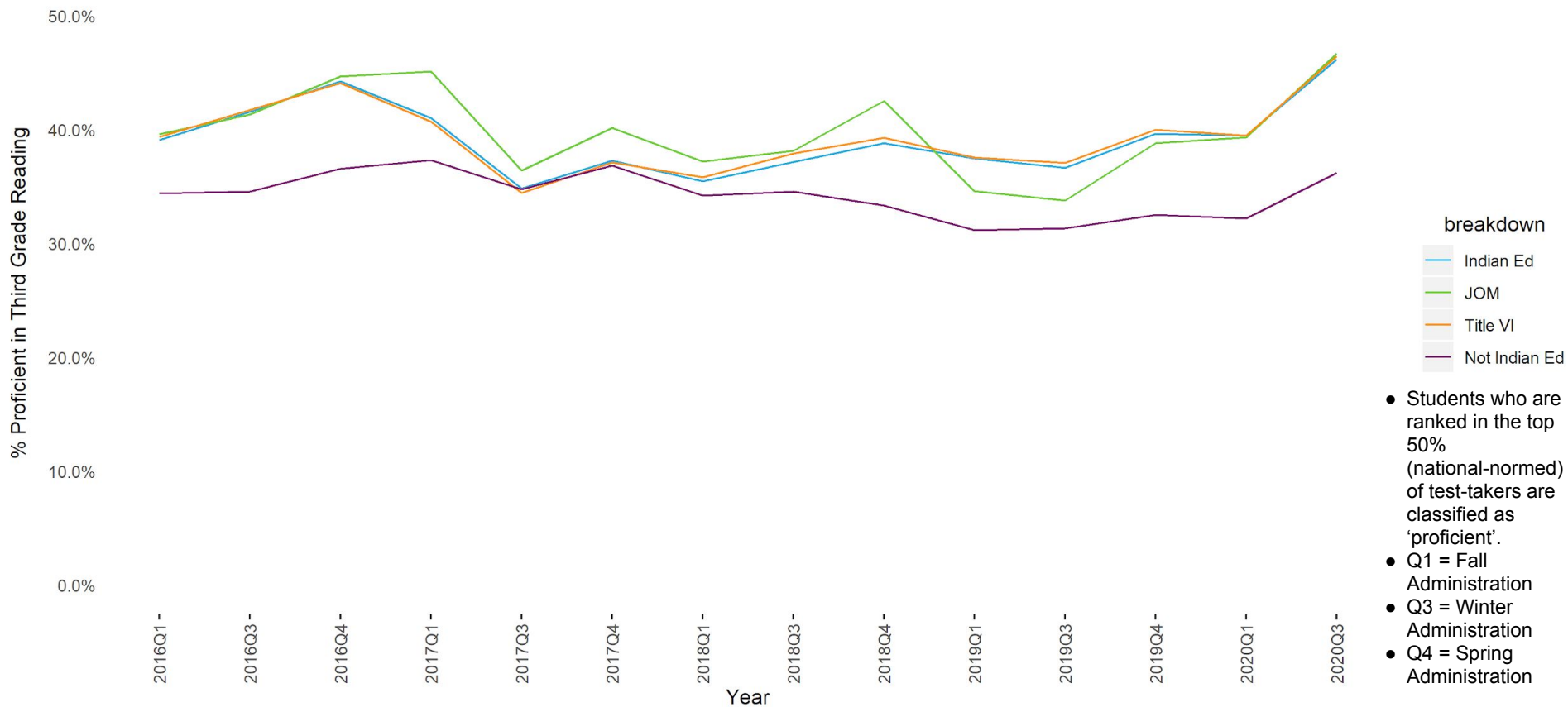
Percent of students proficient in MAP math by quarter for the last 5 years



Percent of students proficient in MAP reading by quarter for the last 5 years



Percent of students proficient in third grade reading by quarter for the last 5 years



Percent of students with at least one suspension by quarter for the last 5 years

% of Students Suspended

10.0%

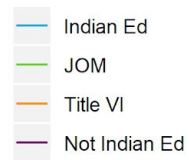
5.0%

0.0%

2016Q1 -
2016Q2 -
2016Q3 -
2016Q4 -
2017Q1 -
2017Q2 -
2017Q3 -
2017Q4 -
2018Q1 -
2018Q2 -
2018Q3 -
2018Q4 -
2019Q1 -
2019Q2 -
2019Q3 -
2019Q4 -
2020Q1 -
2020Q2 -
2020Q3 -

Year

breakdown



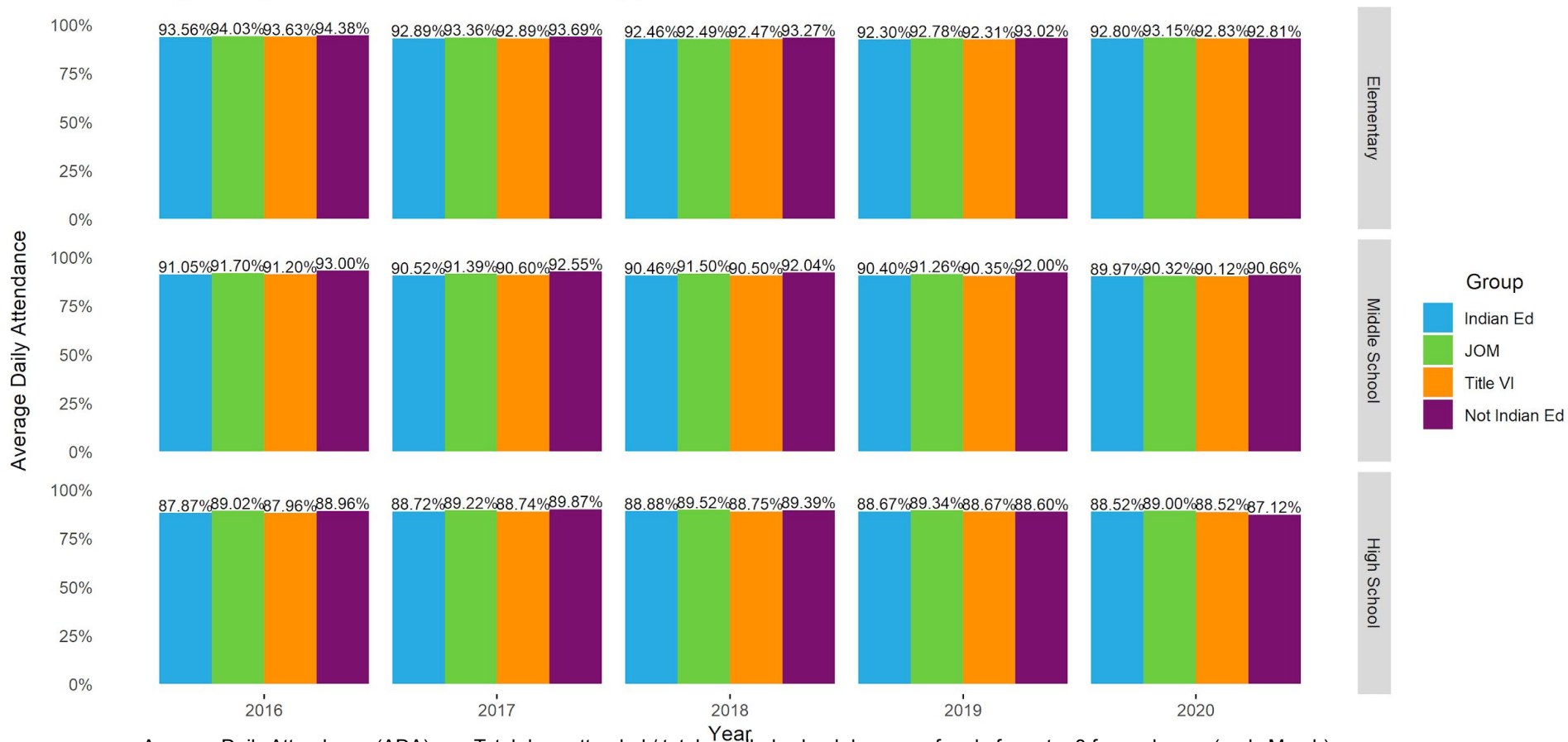
- Total percent of students suspended as of end of each quarter for each year.

Tulsa Public Schools Indian Education Program Community Meeting

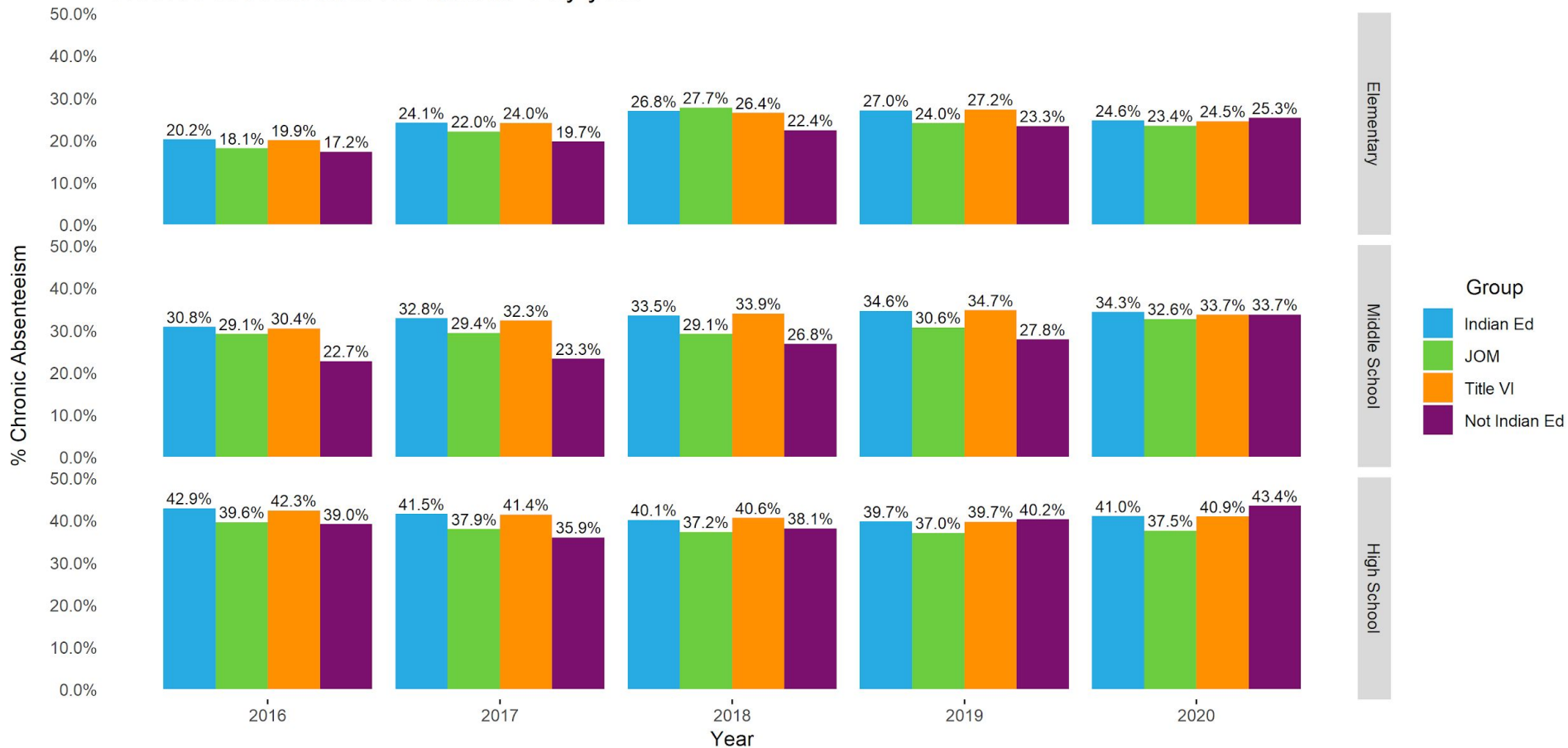
Data up-to-date as of March 10, 2020

School-Levels

Average daily attendance for Quarter 3 by year

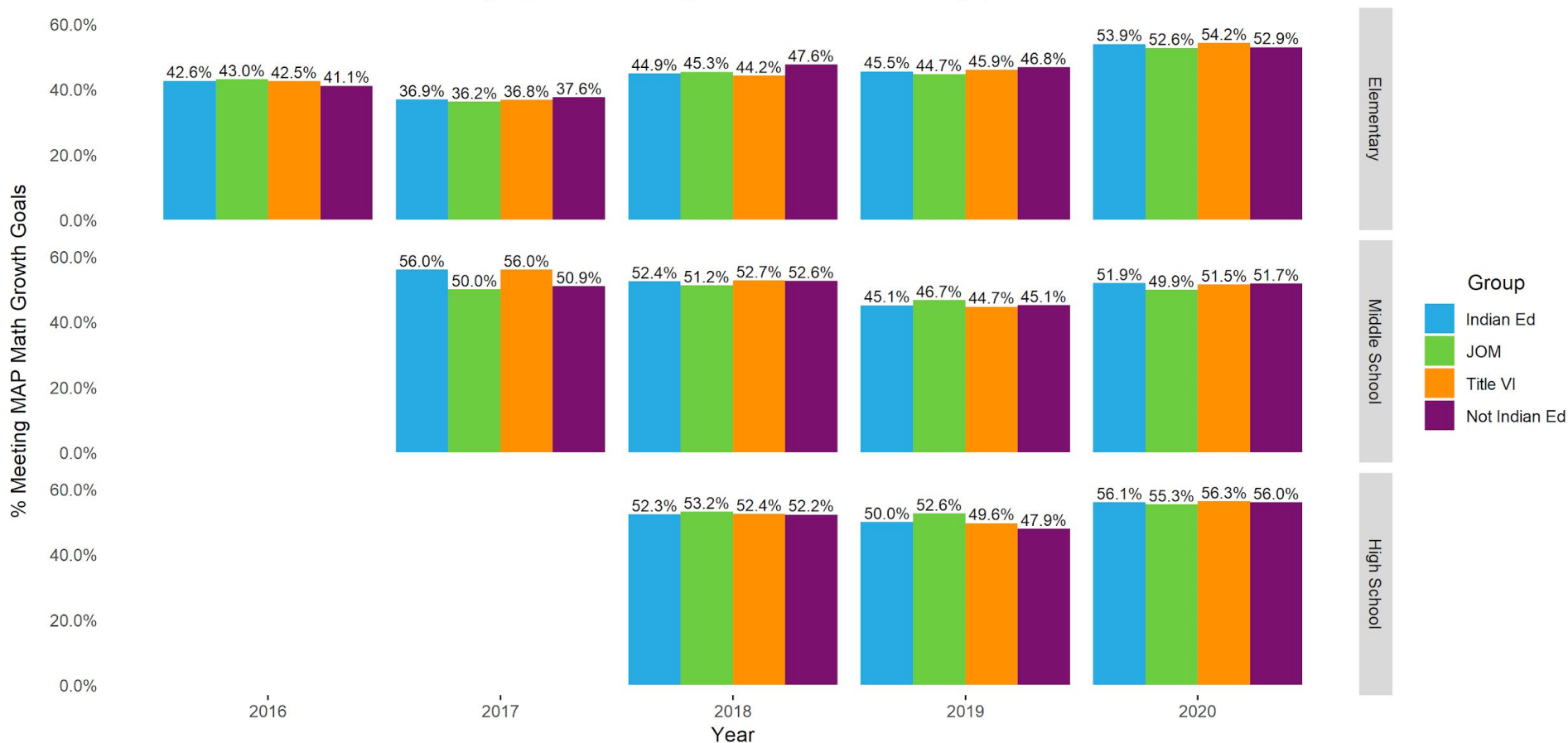


Chronic absenteeism for Quarter 3 by year



- Chronic Absenteeism rate = % of students who have been absent 10% or more of the school days they have been enrolled, as of end of quarter 3 for each year (early March).

Percent of students met MAP projected math growth for Quarter 3 by year



- MAP rigorously normalizes scores against test-takers nationwide.
- Growth goals represent the scores needed to maintain rank against test-takers nationwide; nationally, 50% of students meet their projected growth.
- MAP administration limited to K-3 grades prior to SY 2018.
- District-wide K-10 MAP administration initiated in SY 2018.

Percent of students met MAP projected reading growth for Quarter 3 by year



- MAP rigorously normalizes scores against test-takers nationwide.
- Growth goals represent the scores needed to maintain rank against test-takers nationwide; nationally, 50% of students meet their projected growth.
- MAP administration limited to K-3 grades prior to SY 2018.
- District-wide K-10 MAP administration initiated in SY 2018.

Percent of students proficient in MAP math for Quarter 3 by year

% Proficient in MAP Math

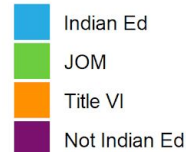


Elementary

Middle School

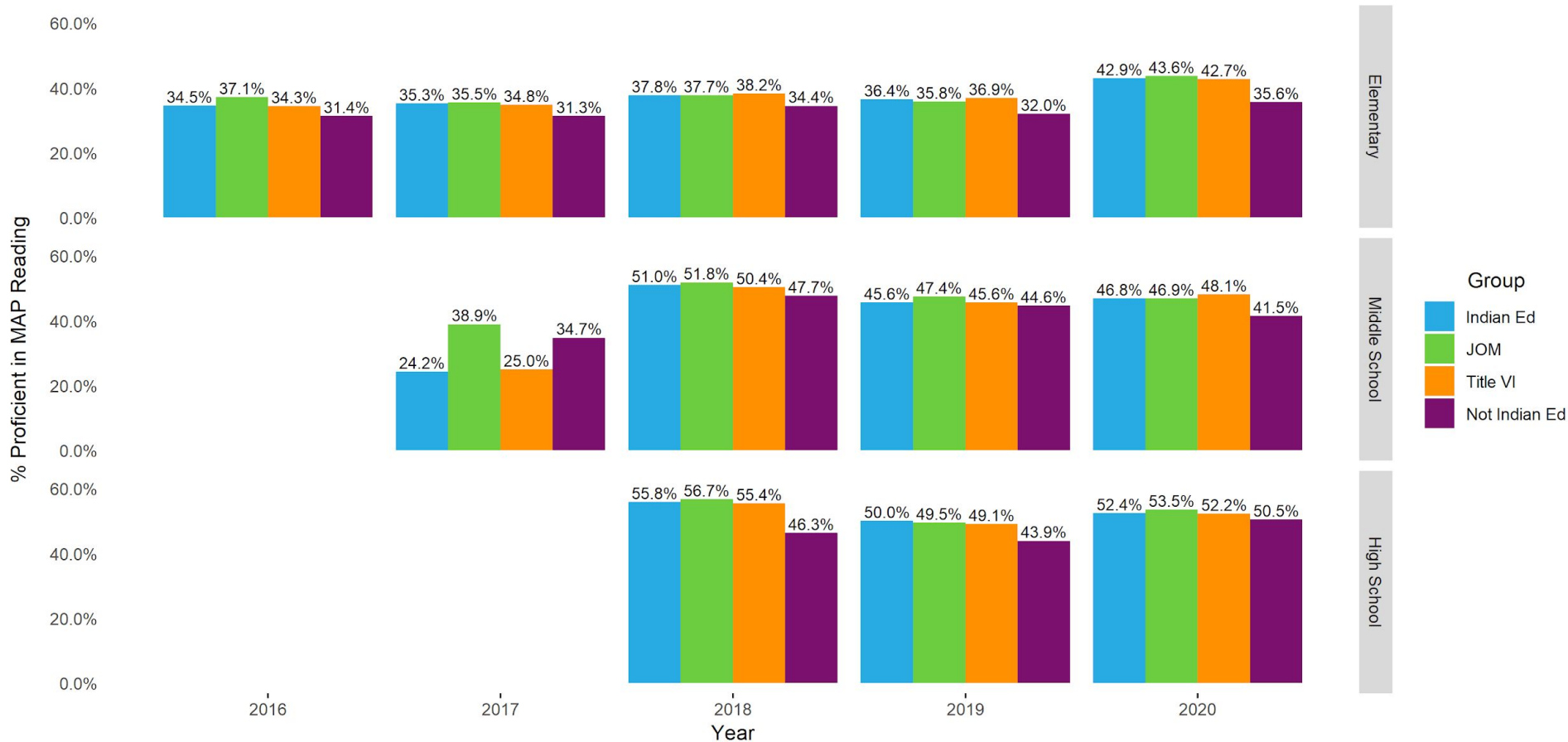
High School

Group



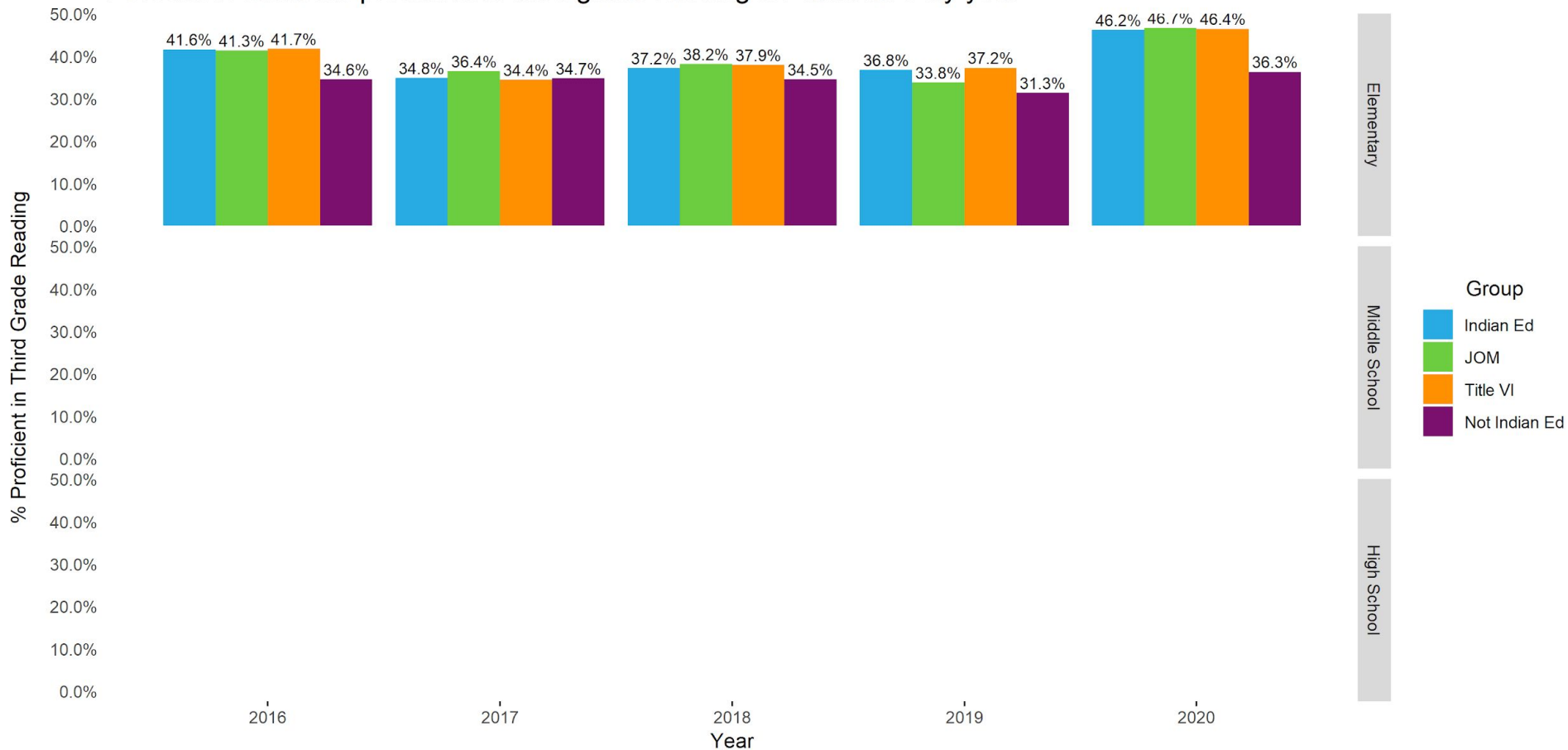
- Students who are ranked in the top 50% (national-normed) of test-takers are classified as 'proficient'.
- MAP administration limited to K-3 grades prior to SY 2018.
- District-wide K-10 MAP administration initiated in SY 2018.

Percent of students proficient in MAP reading for Quarter 3 by year



- Students who are ranked in the top 50% (national-normed) of test-takers are classified as 'proficient'.
- MAP administration limited to K-3 grades prior to SY 2018.
- District-wide K-10 MAP administration initiated in SY 2018.

Percent of students proficient in third grade reading for Quarter 3 by year



- Students who are ranked in the top 50% (national-normed) of test-takers are classified as 'proficient'.
- For the set of academic metrics tracked, Tulsa Public Schools specifically focuses on Third-Grade reading proficiency as a high priority.

Percent of students with at least one suspension for Quarter 3 by year



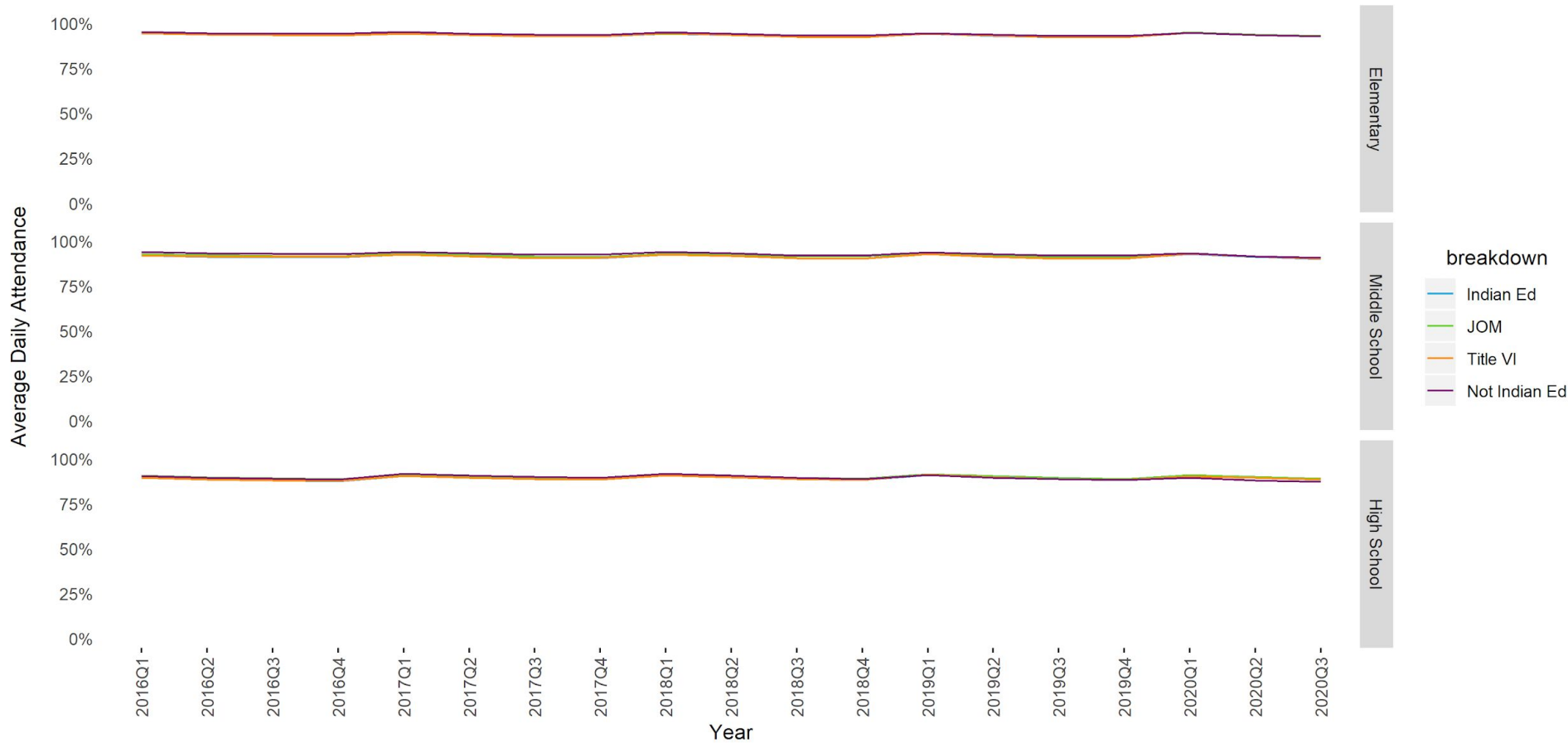
● Total percent of students suspended as of quarter 3 each year (early March).

Tulsa Public Schools
Indian Education Program Community Meeting

Data up-to-date as of March 10, 2020

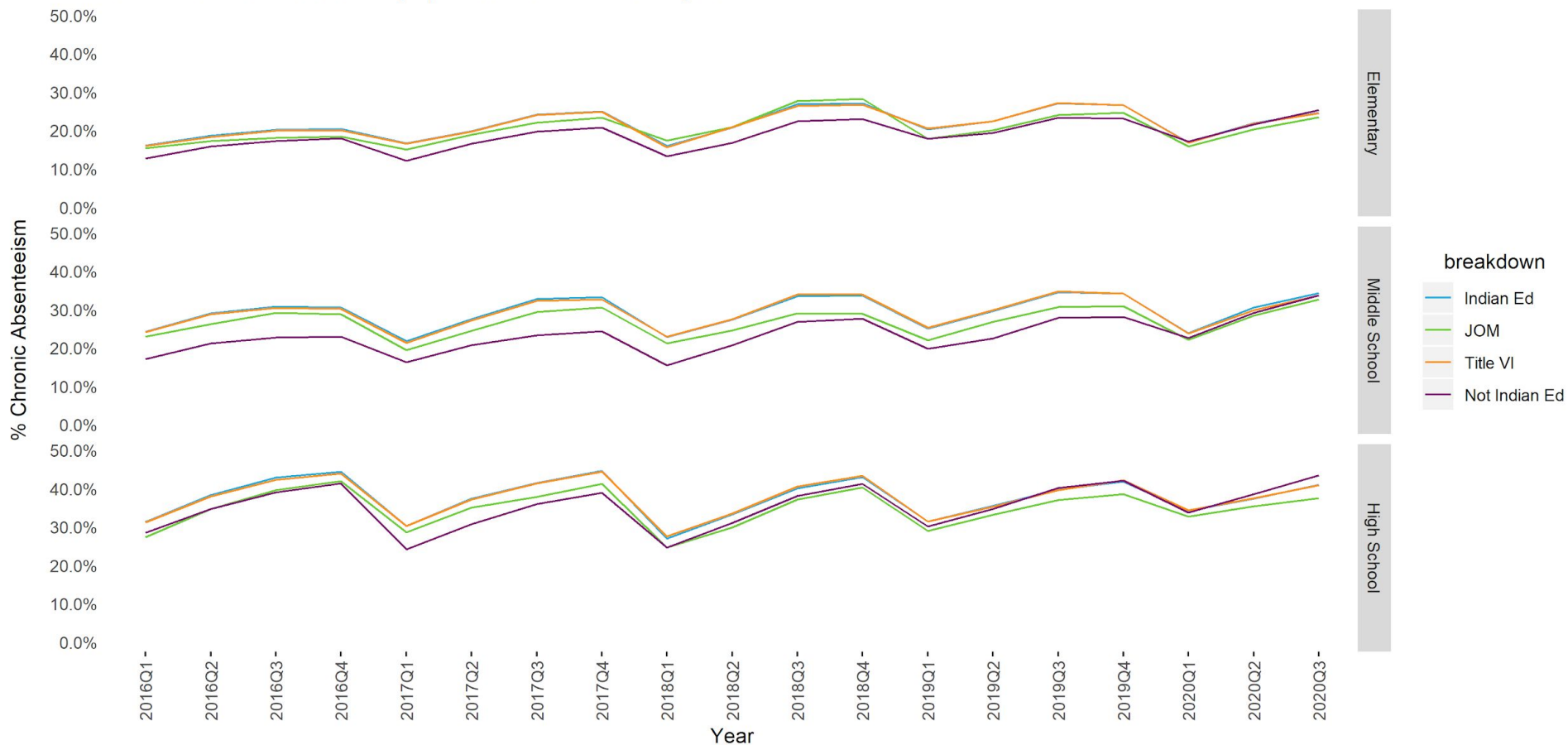
School-Levels (All Quarters)

Average daily attendance by quarter for the last 5 years



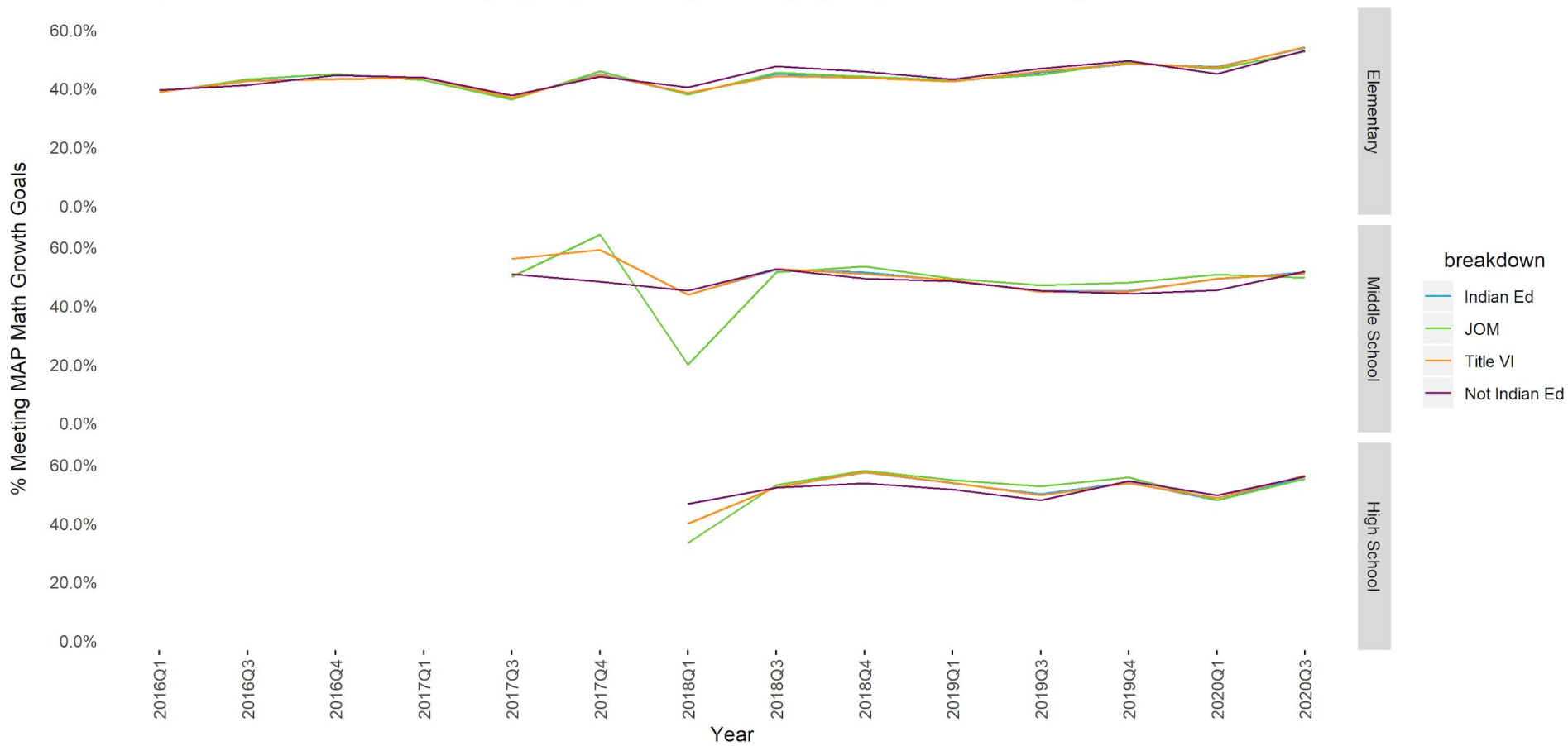
● Average Daily Attendance (ADA) = Total days attended / total enrolled school days, as of end of quarter 3 for each year (early March).

Chronic absenteeism by quarter for the last 5 years



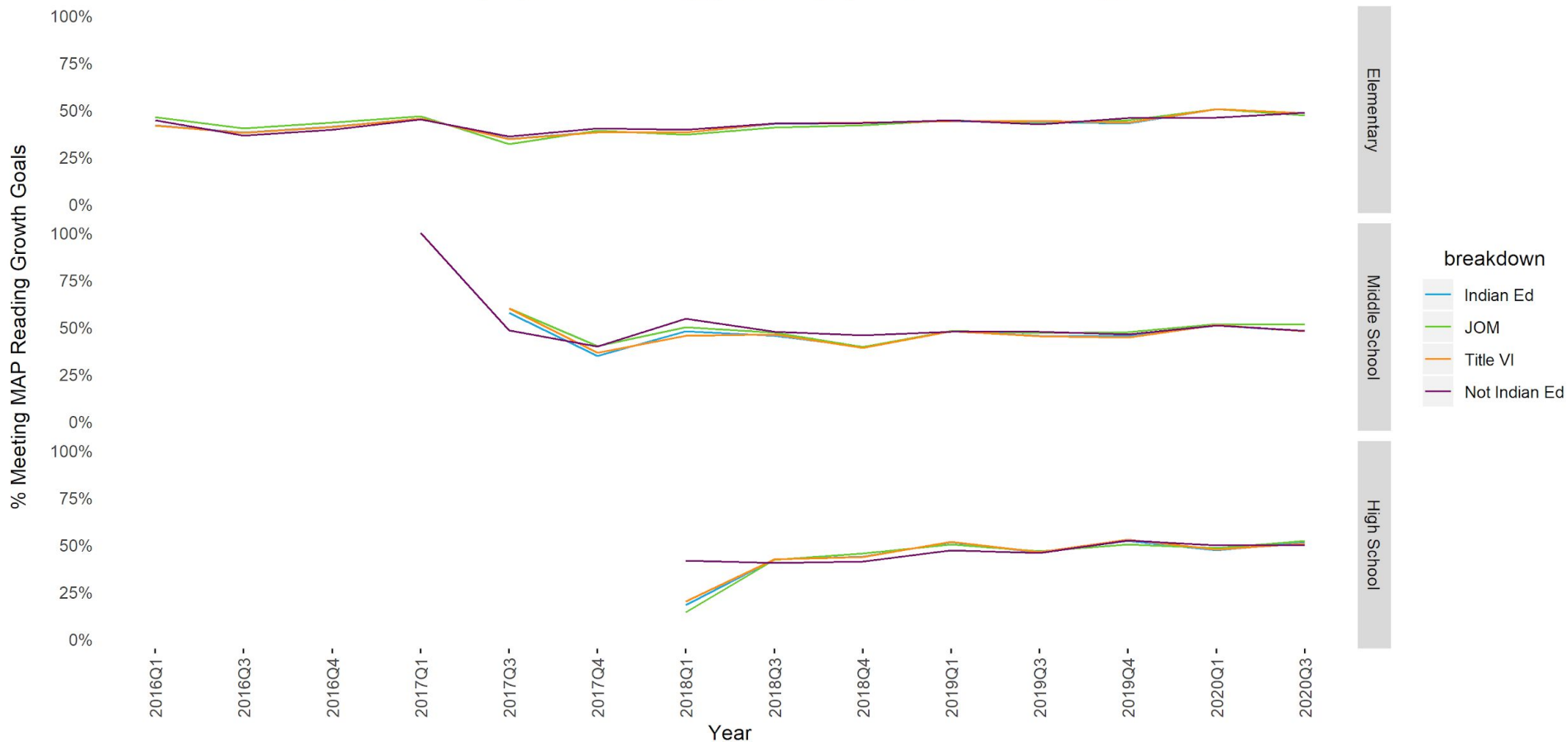
- Chronic Absenteeism rate = % of students who have been absent 10% or more of the school days they have been enrolled, as of end of quarter 3 for each year (early March).

Percent of students met MAP projected math growth by quarter for the last 5 years



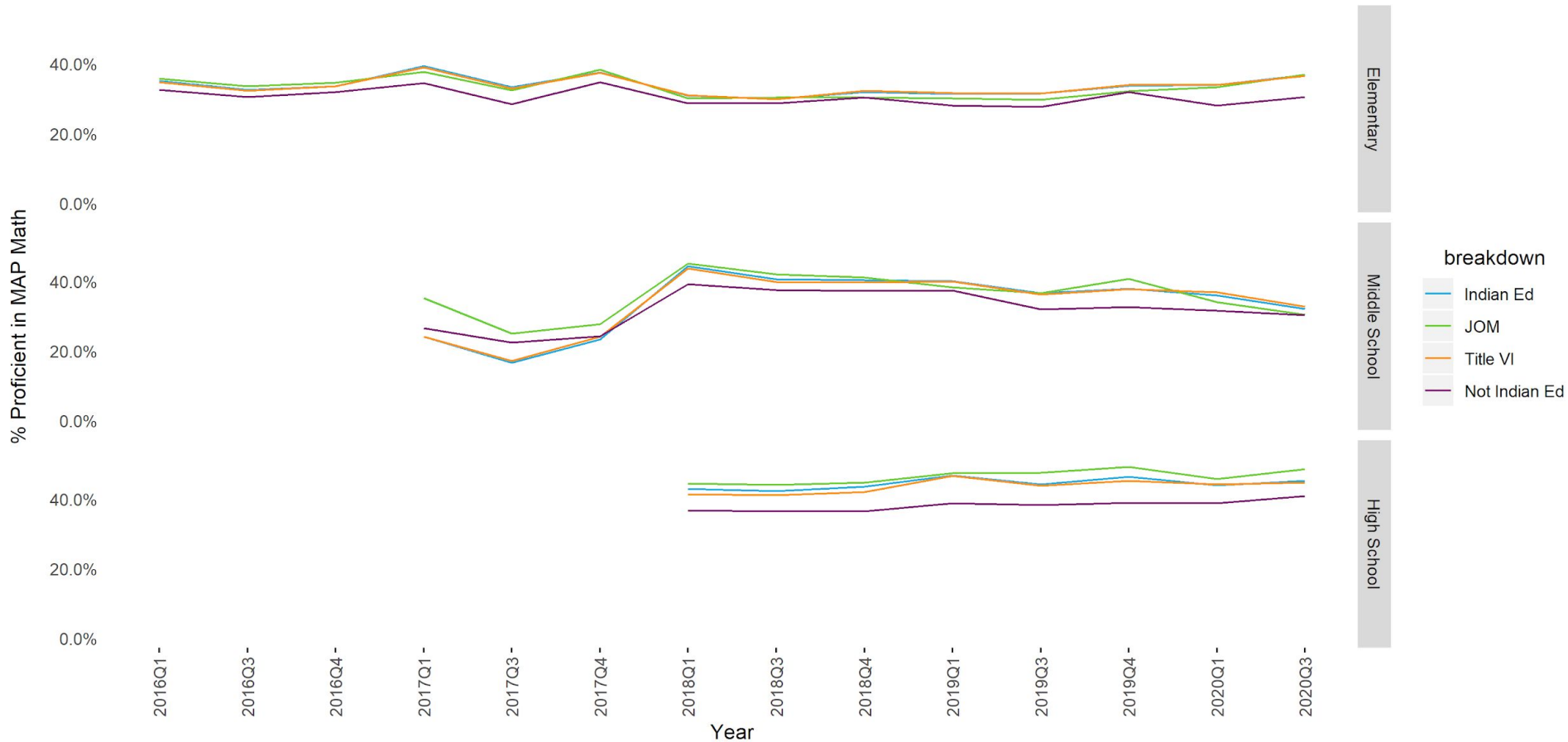
- MAP rigorously normalizes scores against test-takers nationwide.
- Growth goals represent the scores needed to maintain rank against test-takers nationwide; nationally, 50% of students meet their projected growth.
- MAP administration limited to K-3 grades prior to SY 2018.
- District-wide K-10 MAP administration initiated in SY 2018.

Percent of students met MAP projected reading growth by quarter for the last 5 years



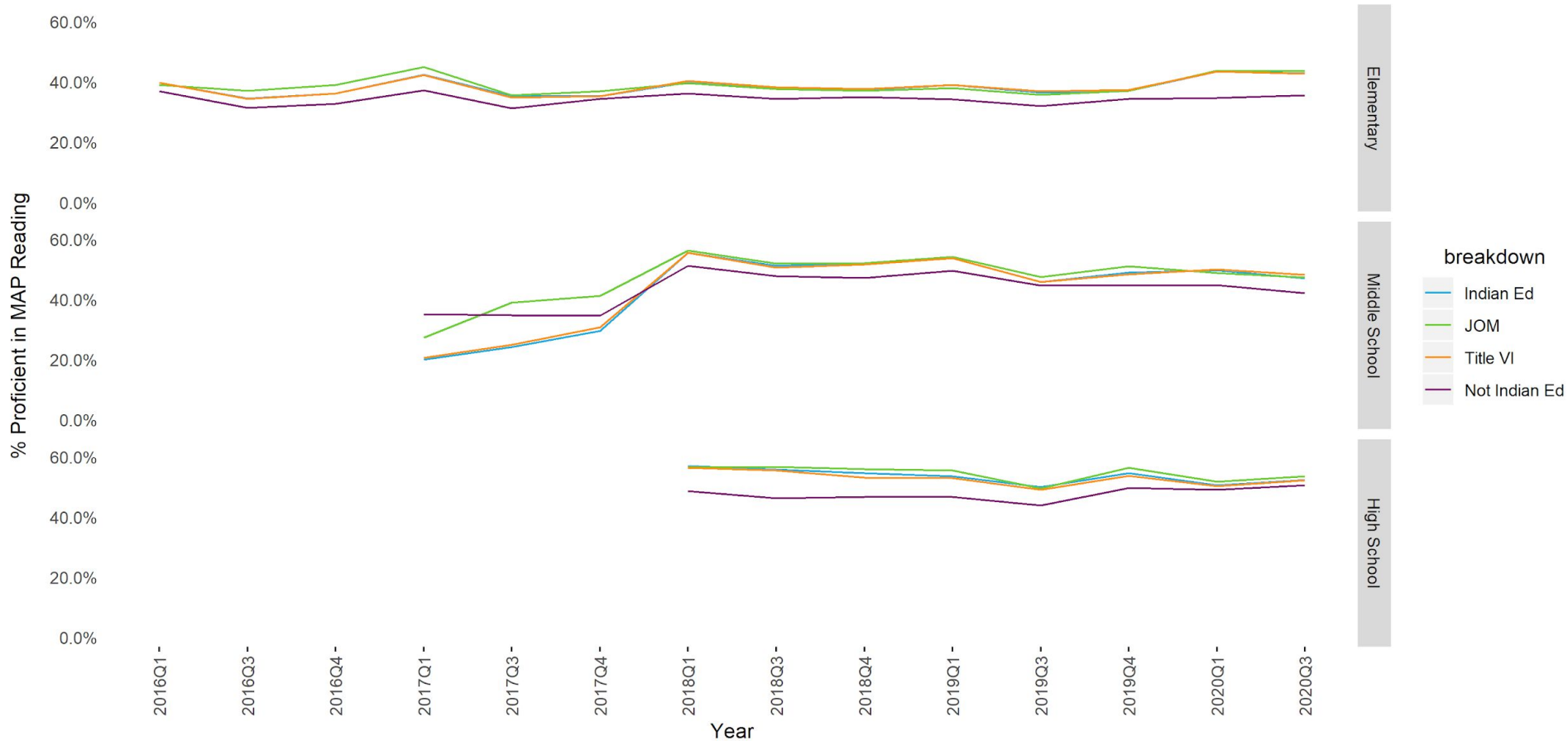
- MAP rigorously normalizes scores against test-takers nationwide.
- Growth goals represent the scores needed to maintain rank against test-takers nationwide; nationally, 50% of students meet their projected growth.
- MAP administration limited to K-3 grades prior to SY 2018.
- District-wide K-10 MAP administration initiated in SY 2018.

Percent of students proficient in MAP math by quarter for the last 5 years



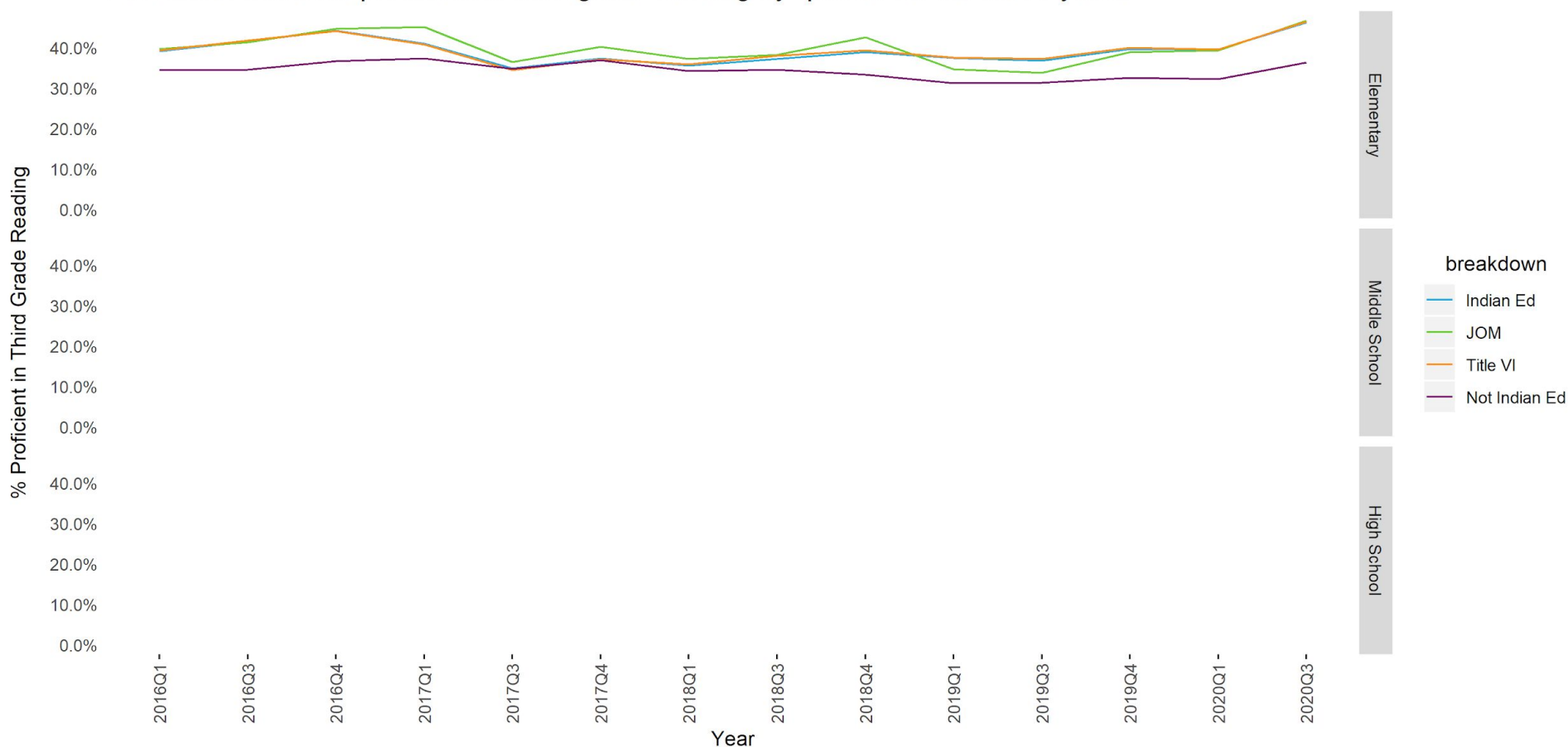
- Students who are ranked in the top 50% (national-normed) of test-takers are classified as 'proficient'.
- MAP administration limited to K-3 grades prior to SY 2018.
- District-wide K-10 MAP administration initiated in SY 2018.

Percent of students proficient in MAP reading by quarter for the last 5 years



- Students who are ranked in the top 50% (national-normed) of test-takers are classified as 'proficient'.
- MAP administration limited to K-3 grades prior to SY 2018.
- District-wide K-10 MAP administration initiated in SY 2018.

Percent of students proficient in third grade reading by quarter for the last 5 years



- Students who are ranked in the top 50% (national-normed) of test-takers are classified as 'proficient'.
- For the set of academic metrics tracked, Tulsa Public Schools specifically focuses on Third-Grade reading proficiency as a high priority.

Percent of students with at least one suspension by quarter for the last 5 years



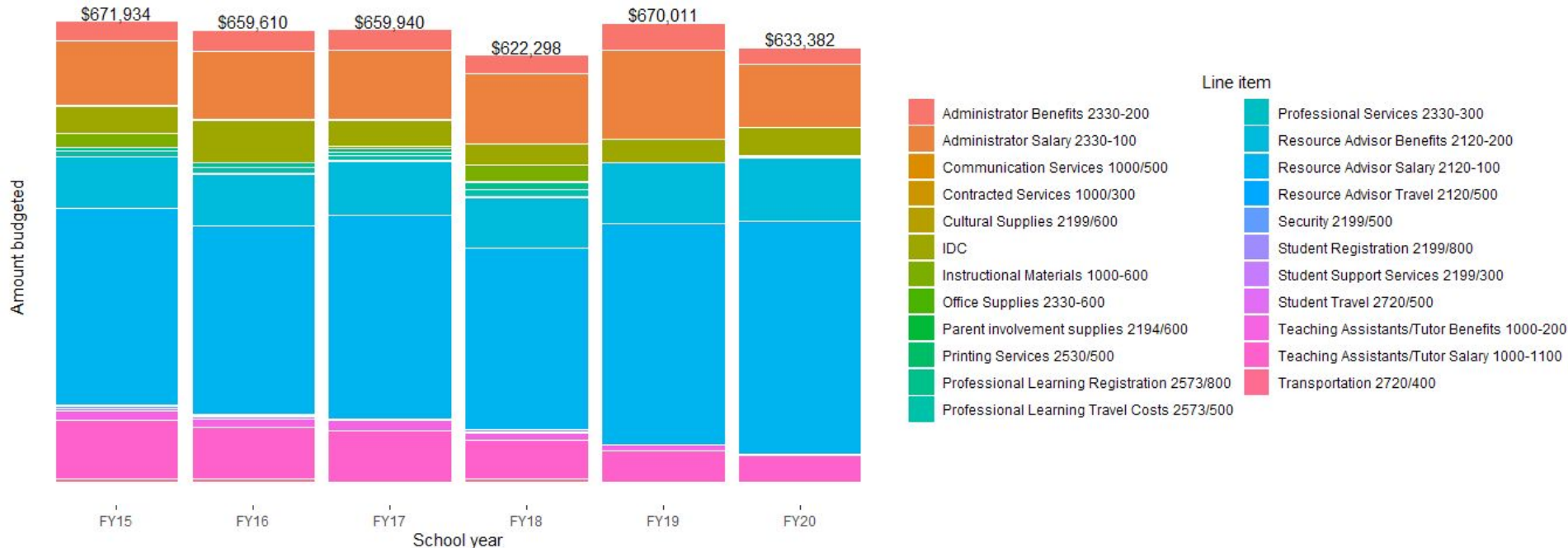
● Total percent of students suspended as of quarter 3 each year (early March).

Tulsa Public Schools Indian Education Program Community Meeting

Data up-to-date as of March 10, 2020

Budget

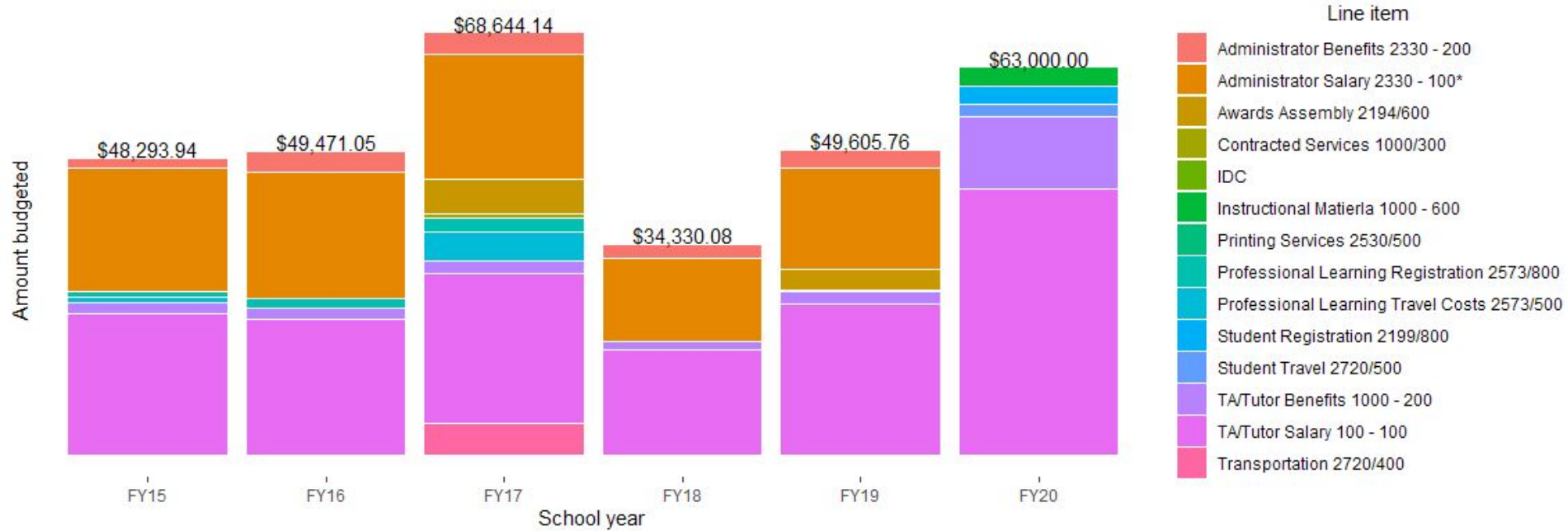
Title VI, Part A - Indian, Native Hawaiian, and Alaska Native Education
budget breakdown by school year



Cherokee Nation JOM budget breakdown by school year



Muscogee Creek Nation JOM budget breakdown by school year



Cherokee Nation Tag funds breakdown by school year

