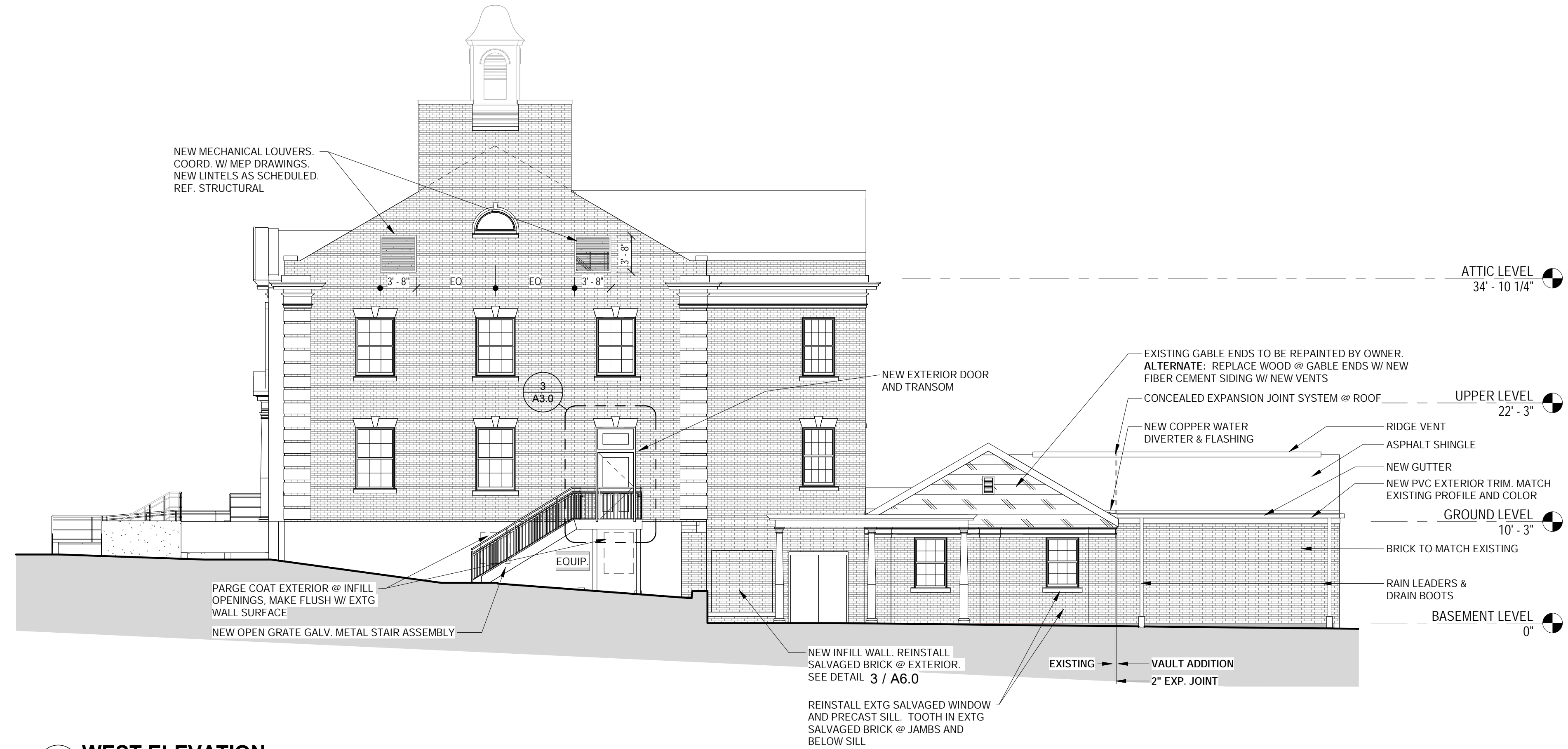
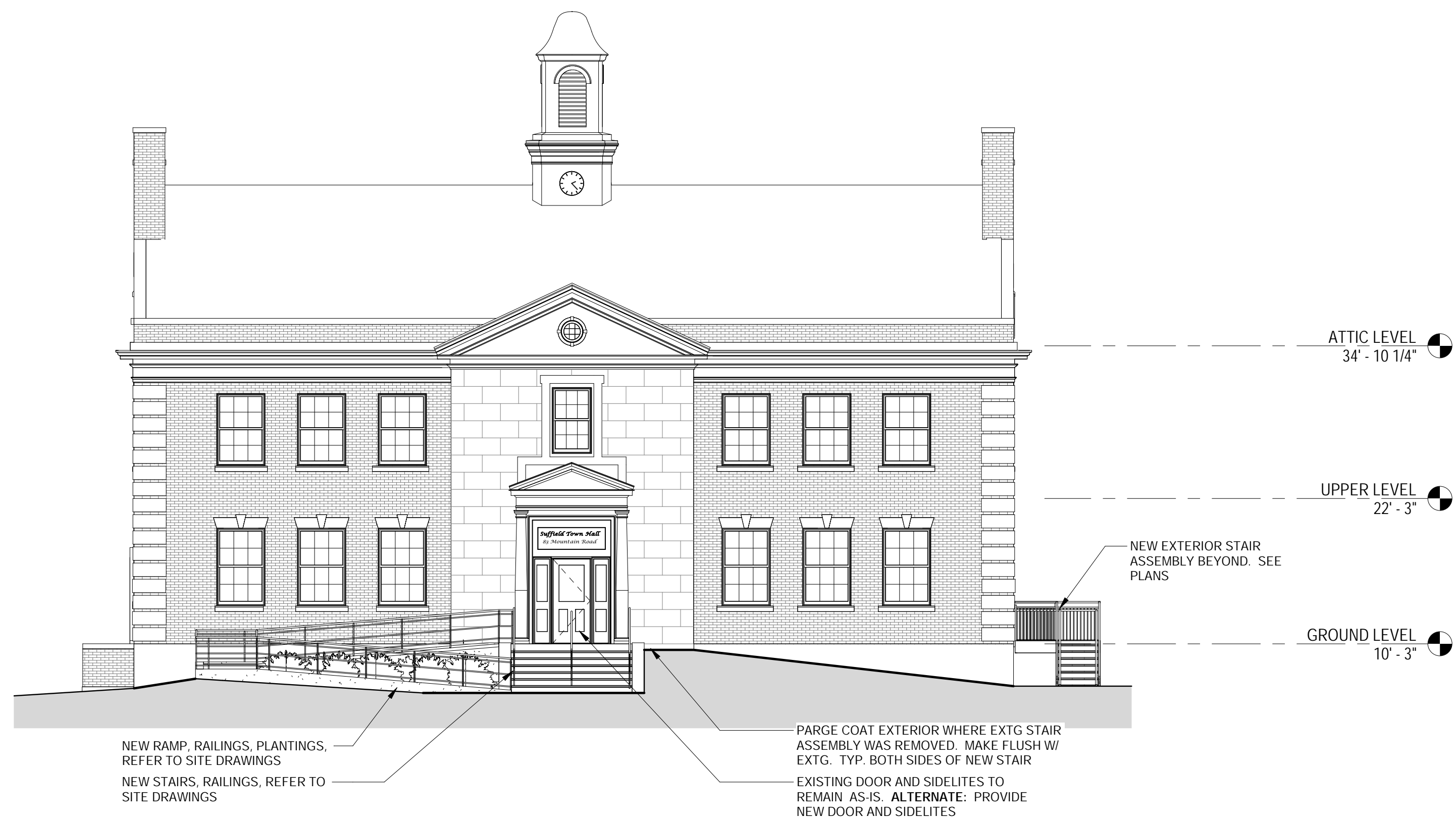


3 PART. WEST ELEV. @ NEW DOOR  
 A3.0 1/4" = 1'-0"



2 WEST ELEVATION  
 A3.0 1/8" = 1'-0"



1 NORTH ELEVATION  
 A3.0 1/8" = 1'-0"

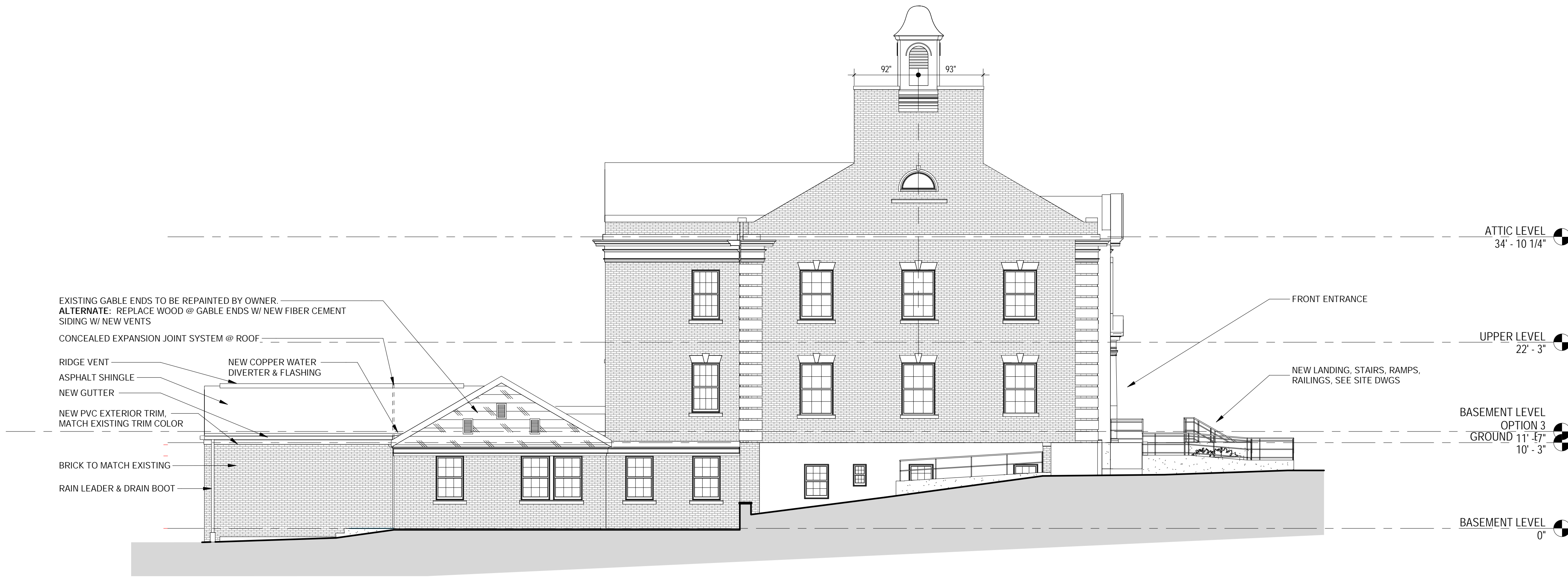
PROPOSED RENOVATIONS  
 FOR:  
**SUFFIELD TOWN  
 HALL**  
 SUFFIELD, CT  
 Project #: 1949

Revisions  
 Issue Dates:

CONSTRUCTION DOCUMENTS  
 FEBRUARY 28, 2020

EXTERIOR ELEVATIONS

**A3.0**



1 EAST ELEVATION  
A3.1 1/8" = 1'-0"



2 SOUTH ELEVATION  
A3.1 1/8" = 1'-0"

PROPOSED RENOVATIONS  
FOR:  
**SUFFIELD TOWN HALL**  
  
SUFFIELD, CT  
Project #: 1949

Revisions  
Issue Dates:

CONSTRUCTION DOCUMENTS  
FEBRUARY 28, 2020

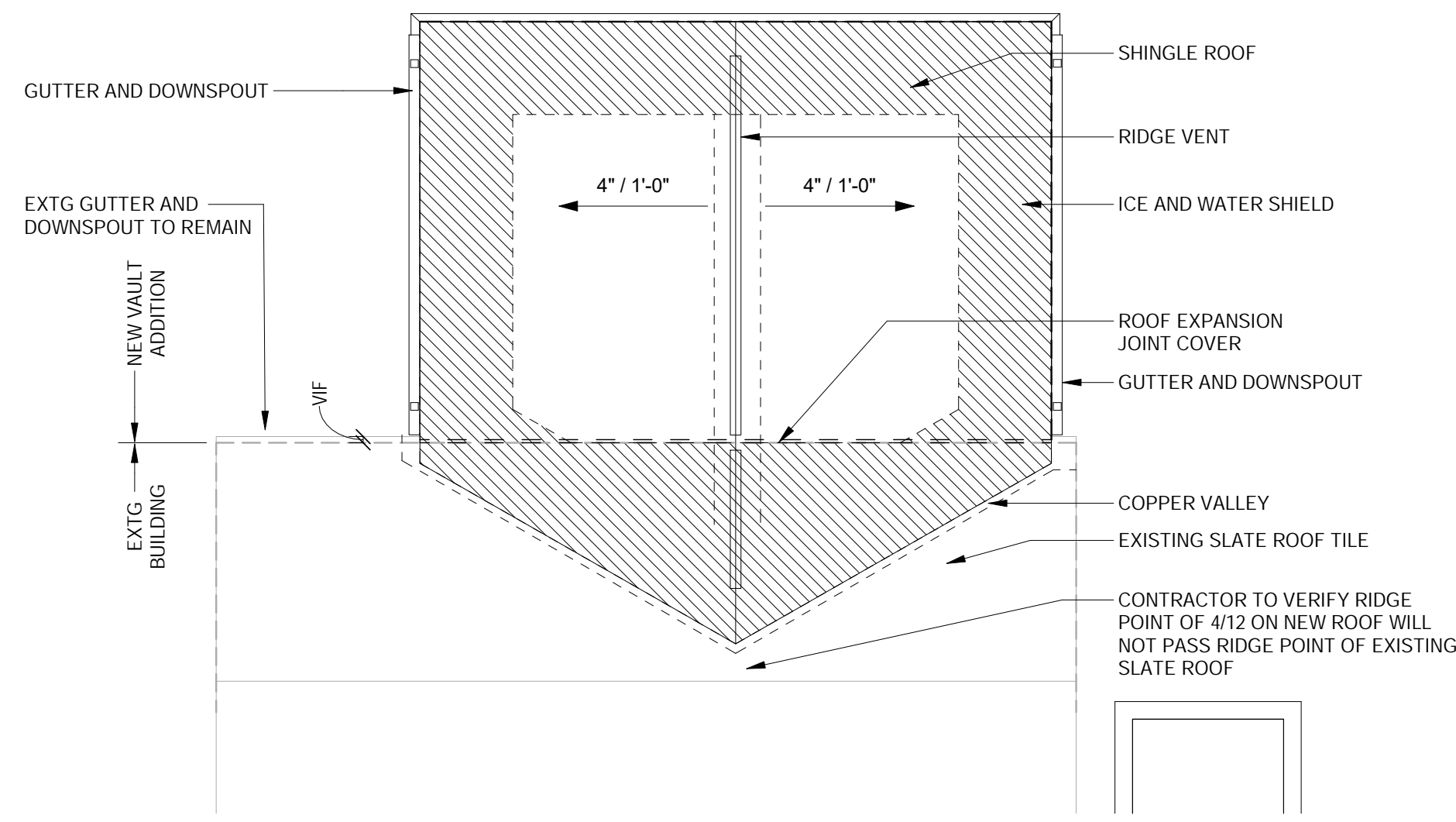
EXTERIOR ELEVATIONS

**A3.1**

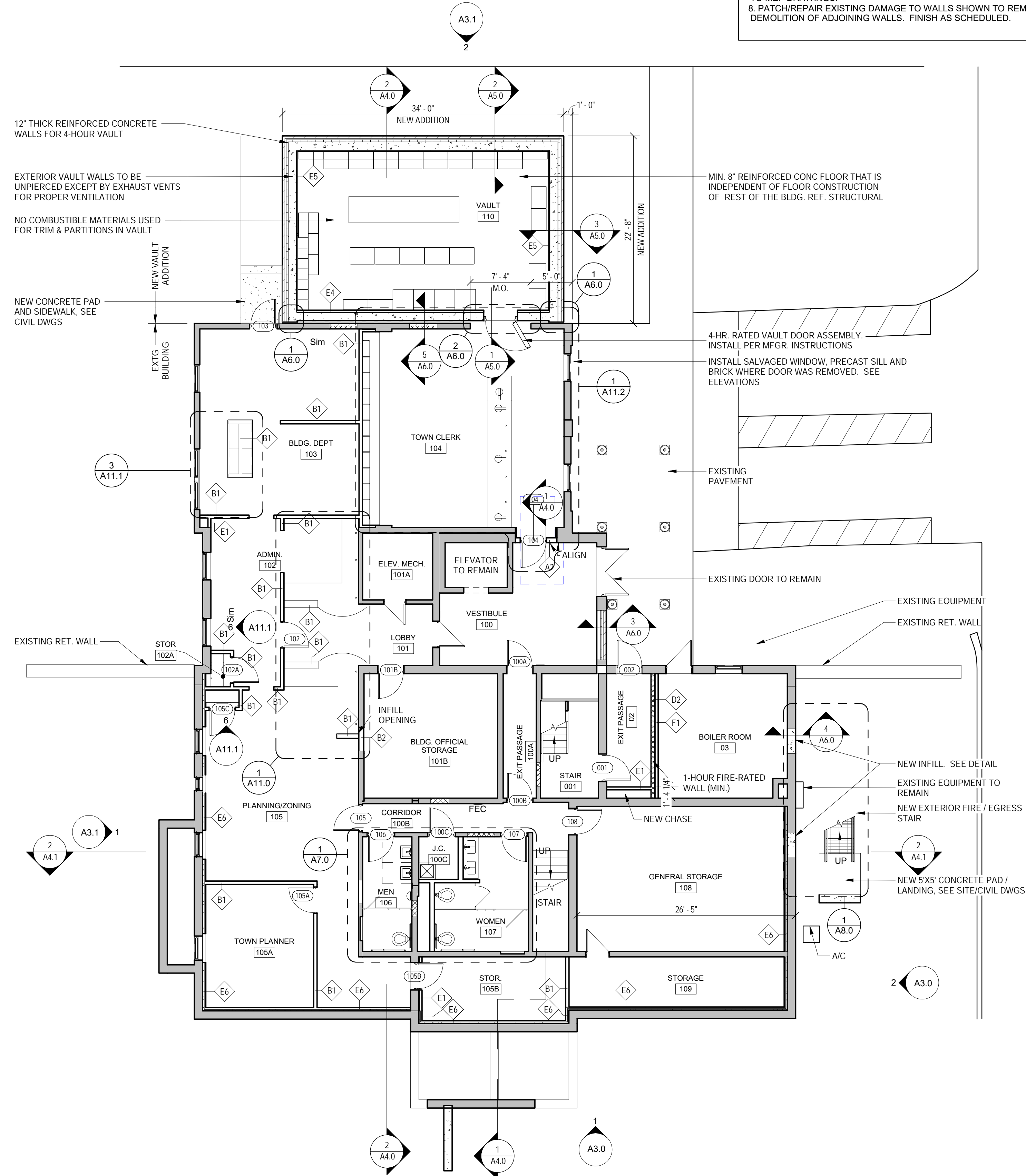


**GENERAL NOTES:**

1. DIMENSIONS SHOWN ON ARCHITECTURAL FLOOR PLANS AND ENLARGED PLAN DETAILS ARE TO FACE OF STUD, TO FACE OF MASONRY OR TO CENTERLINE OF COLUMN UNLESS OTHERWISE NOTED.
2. DO NOT SCALE OR MEASURE THESE DRAWINGS. REFER TO WRITTEN DIMENSIONS, NOTES AND DETAILS ON THESE DRAWINGS TO LOCATE WALLS, CASEWORK AND EQUIPMENT.
3. THE CONTRACTOR SHALL COORDINATE AND INSTALL THE DIMENSIONS FOR FRAMED OPENINGS FOR ALL BUILT-IN ITEMS, INCLUDING EQUIPMENT, FIXTURES, SIGNAGE AND FURNITURE BASED ON THE ACTUAL ITEMS SELECTED BY THE ARCHITECT.
4. REFER TO ROOM FINISH SCHEDULE FOR FINISH MATERIALS.
5. CONTRACTOR TO PROVIDE ALIGNMENTS SHOWN IN THE DRAWINGS. IF THE DIMENSIONS SHOWN CONFLICT WITH GRAPHIC ALIGNMENTS AND DESIGN INTENT DEMONSTRATED IN THE DRAWINGS, REVIEW THE DIMENSIONS WITH THE ARCHITECT PRIOR TO PROCEEDING.
6. CONTRACTOR TO REFER TO CODE PLANS FOR ALL FIRE-RATINGS, TO BE MAINTAINED AT ALL APPROPRIATE WALLS, DOORS, OPENINGS, ETC.
7. ALL FLOOR AND WALL DUCTWORK PENETRATIONS SHALL BE SEALED. REFER TO MEP DRAWINGS.
8. PATCH/REPAIR EXISTING DAMAGE TO WALLS SHOWN TO REMAIN OR DUE TO DEMOLITION OF ADJOINING WALLS. FINISH AS SCHEDULED.



**2 ROOF PLAN @ NEW ADDITION**  
 A1.0 1/8" = 1'-0"



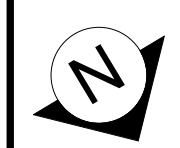
**1 BASEMENT LEVEL FLOOR PLAN**  
 A1.0 1/8" = 1'-0"

**PROPOSED RENOVATIONS  
 FOR:  
 SUFFIELD TOWN  
 HALL**

**SUFFIELD, CT**  
 Project #: 1949

Revisions

Issue Dates:

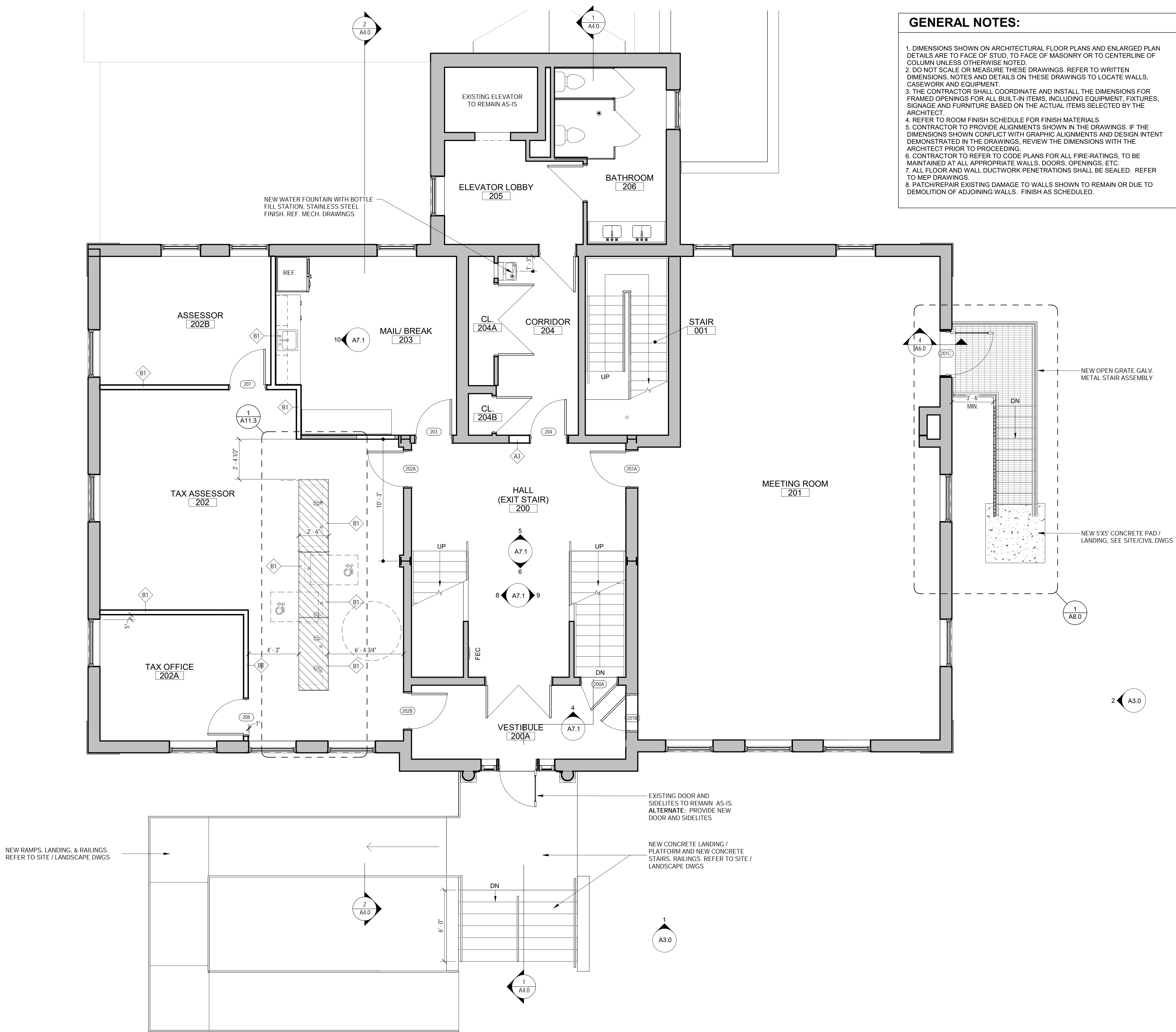


CONSTRUCTION DOCUMENTS  
 FEBRUARY 28, 2020

**BASEMENT FLOOR PLAN**

**A1.0**

C:\Revit Local\Suffield Town Hall\_jinapicone.rvt 3/5/2020 3:29:54 PM



**GENERAL NOTES:**

1. DIMENSIONS SHOWN ON ARCHITECTURAL FLOOR PLANS AND ENLARGED PLAN DETAILS ARE TO FACE OF STUD, TO FACE OF MASONRY OR TO CENTERLINE OF COLUMN UNLESS OTHERWISE NOTED.
2. DO NOT SCALE OR MEASURE THESE DRAWINGS. REFER TO WRITTEN DIMENSIONS, NOTES AND DETAILS ON THESE DRAWINGS TO LOCATE WALLS, CASEWORK AND EQUIPMENT.
3. THE CONTRACTOR SHALL COORDINATE AND INSTALL THE DIMENSIONS FOR FRAMED OPENINGS FOR ALL BUILT-IN ITEMS, INCLUDING EQUIPMENT, FIXTURES, SIGNAGE AND FURNITURE BASED ON THE ACTUAL ITEMS SELECTED BY THE ARCHITECT.
4. REFER TO ROOM FINISH SCHEDULE FOR FINISH MATERIALS.
5. CONTRACTOR TO PROVIDE ALIGNMENTS SHOWN IN THE DRAWINGS. IF THE DIMENSIONS SHOWN CONFLICT WITH GRAPHIC ALIGNMENTS AND DESIGN INTENT DEMONSTRATED IN THE DRAWINGS, REVIEW THE DIMENSIONS WITH THE ARCHITECT PRIOR TO PROCEEDING.
6. CONTRACTOR TO REFER TO CODE PLANS FOR ALL FIRE-RATINGS, TO BE MAINTAINED AT ALL APPROPRIATE WALLS, DOORS, OPENINGS, ETC.
7. ALL FLOOR AND WALL DUCTWORK PENETRATIONS SHALL BE SEALED. REFER TO MEP DRAWINGS.
8. PATCH/REPAIR EXISTING DAMAGE TO WALLS SHOWN TO REMAIN OR DUE TO DEMOLITION OF ADJOINING WALLS. FINISH AS SCHEDULED.

**QA+M**  
 architecture  
 QuisenberryArcariMalik  
 195 Scott Swamp Road  
 Farmington, CT 06032  
 qamarch.com

**PROPOSED RENOVATIONS FOR:**  
**SUFFIELD TOWN HALL**  
 SUFFIELD, CT  
 Project #: 1949

Revisions  
 Issue Dates:

 CONSTRUCTION DOCUMENTS  
 FEBRUARY 28, 2020

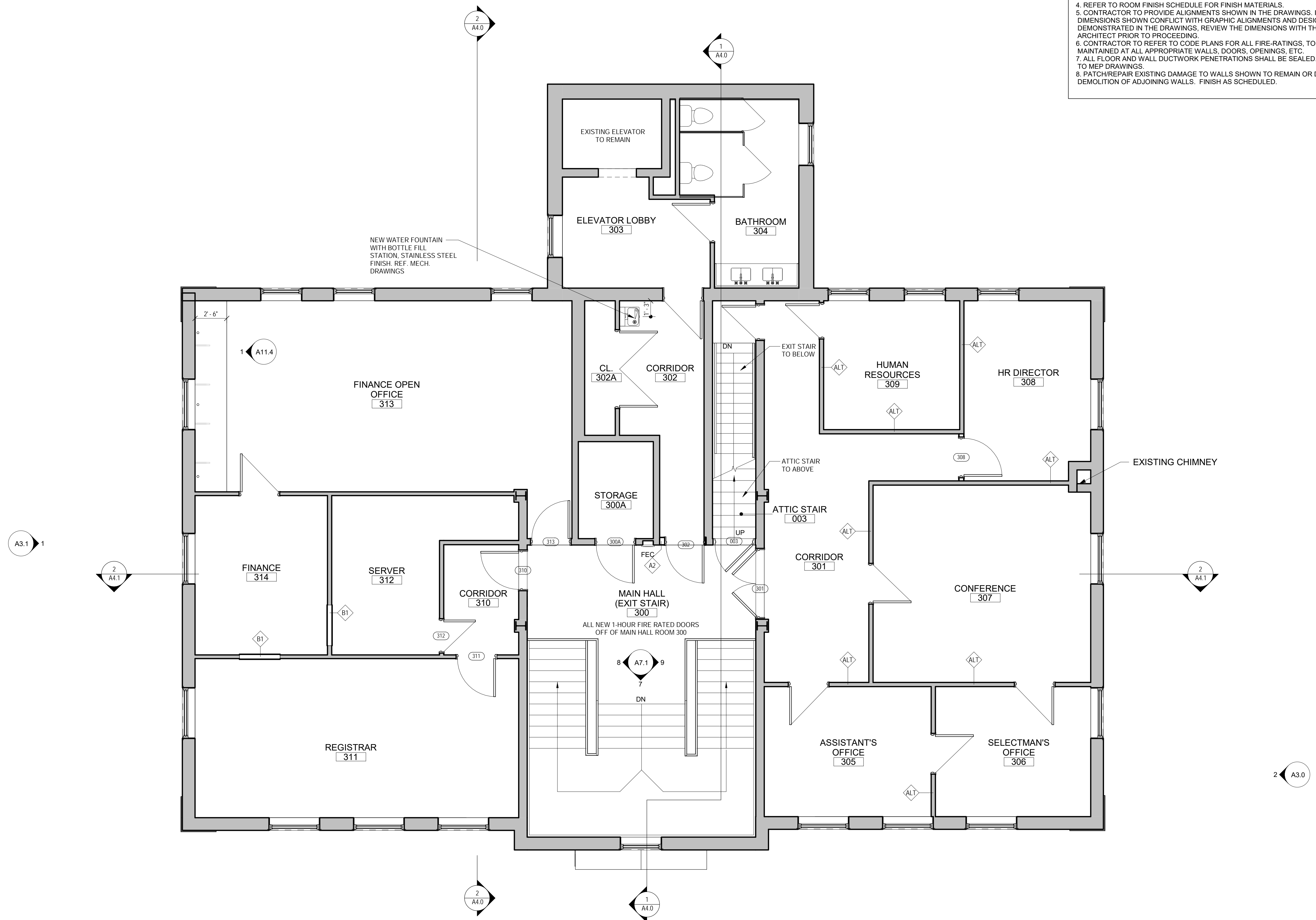
**GROUND LEVEL FLOOR PLAN**

**A1.1**

1 **GROUND LEVEL FLOOR PLAN**  
 A1.1 1/4" = 1'-0"

**GENERAL NOTES:**

1. DIMENSIONS SHOWN ON ARCHITECTURAL FLOOR PLANS AND ENLARGED PLAN DETAILS ARE TO FACE OF STUD, TO FACE OF MASONRY OR TO CENTERLINE OF COLUMN UNLESS OTHERWISE NOTED.
2. DO NOT SCALE OR MEASURE THESE DRAWINGS. REFER TO WRITTEN DIMENSIONS, NOTES AND DETAILS ON THESE DRAWINGS TO LOCATE WALLS, CASEWORK AND EQUIPMENT.
3. THE CONTRACTOR SHALL COORDINATE AND INSTALL THE DIMENSIONS FOR FRAMED OPENINGS FOR ALL BUILT-IN ITEMS, INCLUDING EQUIPMENT, FIXTURES, SIGNAGE AND FURNITURE BASED ON THE ACTUAL ITEMS SELECTED BY THE ARCHITECT.
4. REFER TO ROOM FINISH SCHEDULE FOR FINISH MATERIALS.
5. CONTRACTOR TO PROVIDE ALIGNMENTS SHOWN IN THE DRAWINGS. IF THE DIMENSIONS SHOWN CONFLICT WITH GRAPHIC ALIGNMENTS AND DESIGN INTENT DEMONSTRATED IN THE DRAWINGS, REVIEW THE DIMENSIONS WITH THE ARCHITECT PRIOR TO PROCEEDING.
6. CONTRACTOR TO REFER TO CODE PLANS FOR ALL FIRE-RATINGS, TO BE MAINTAINED AT ALL APPROPRIATE WALLS, DOORS, OPENINGS, ETC.
7. ALL FLOOR AND WALL DUCTWORK PENETRATIONS SHALL BE SEALED. REFER TO MEP DRAWINGS.
8. PATCH/REPAIR EXISTING DAMAGE TO WALLS SHOWN TO REMAIN OR DUE TO DEMOLITION OF ADJOINING WALLS. FINISH AS SCHEDULED.



**1 UPPER LEVEL FLOOR PLAN**  
 A1.2 1/4" = 1'-0"

**PROPOSED RENOVATIONS FOR:**  
**SUFFIELD TOWN HALL**  
 SUFFIELD, CT  
 Project #: 1949

Revisions  
 Issue Dates:

**CONSTRUCTION DOCUMENTS**  
 FEBRUARY 28, 2020

**UPPER LEVEL FLOOR PLAN**  
**A1.2**



### Plumbing Code Calculations

Refer to IBC Chapter 29 and Table 29-A "Minimum Plumbing Fixtures" for specifics, exceptions, and footnotes.

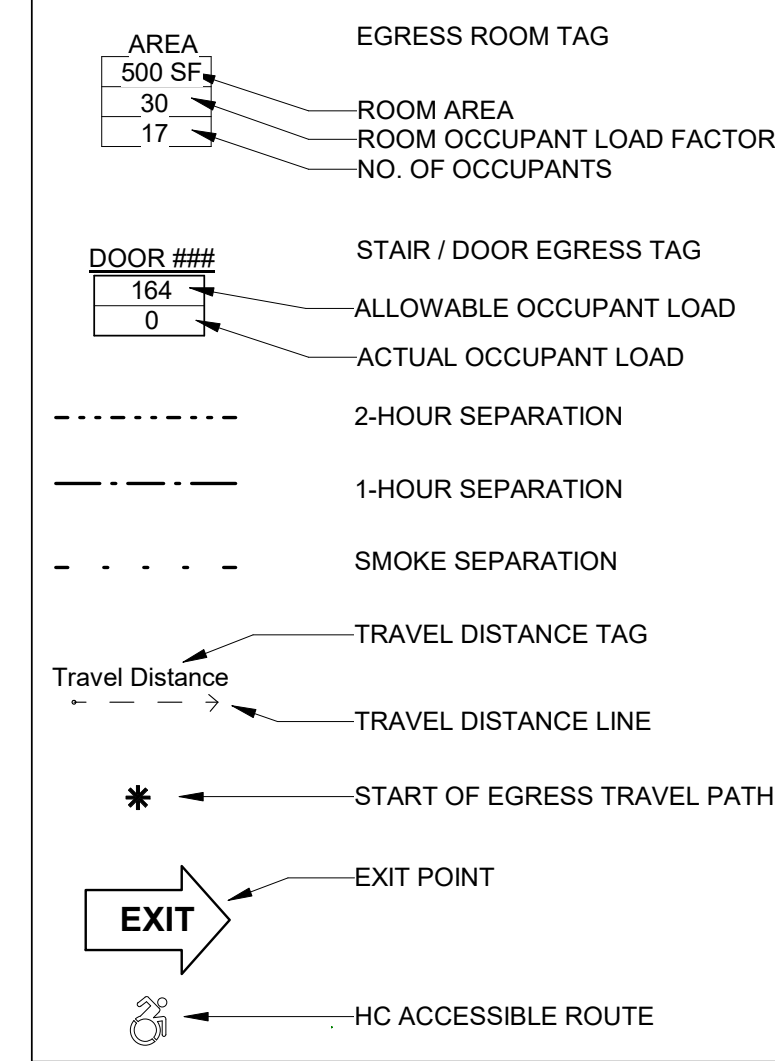
OCCUPANCY: Business - B		OCCUPANTS: 86				(43 MALE 43 FEMALE)	
Buildings for the transaction of business, professional services, other services involving merchandise, office buildings, banks, light industrial and similar uses	WATER CLOSET		LAVATORIES		BATHTUBS OR SHOWERS	DRINKING FOUNTAINS	OTHER
	MALE	FEMALE	MALE	FEMALE			
REQUIRED:	2	2	2	2	-	1	1 Service Sink

### Plumbing Code Calculations

Refer to IBC Chapter 29 and Table 29-A "Minimum Plumbing Fixtures" for specifics, exceptions, and footnotes.

OCCUPANCY: ASSEMBLY - A-3		OCCUPANTS: 65				(33 MALE 33 FEMALE)	
Auditoriums without permanent seating, art galleries, exhibition halls, museums, lecture halls, libraries, arcades and gymnasiums	WATER CLOSET		LAVATORIES		BATHTUBS OR SHOWERS	DRINKING FOUNTAINS	OTHER
	MALE	FEMALE	MALE	FEMALE			
REQUIRED:	1	1	1	1	-	1	1 Service Sink

### LIFE SAFETY LEGEND

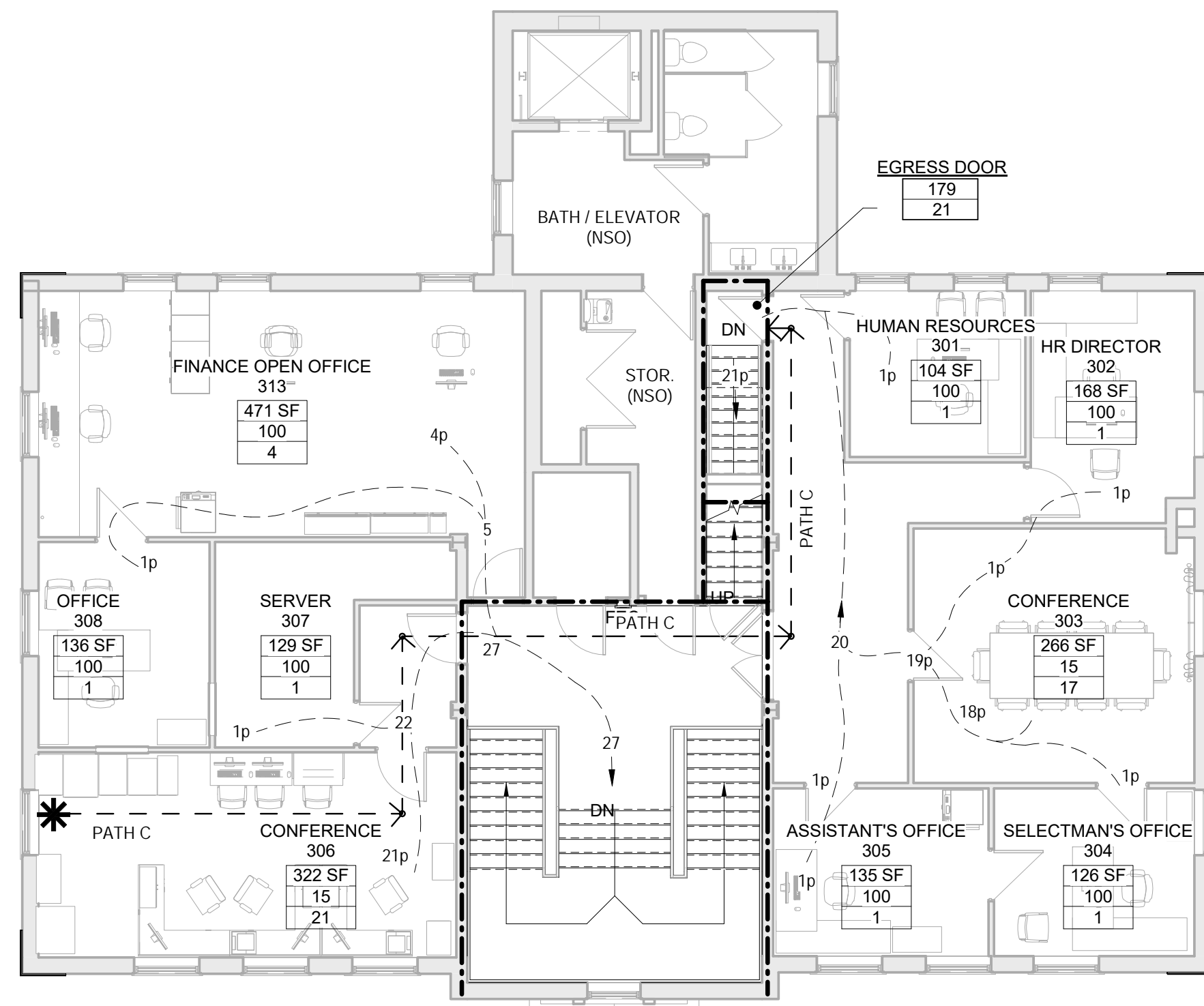


### CODES THIS PROJECT WAS DESIGNED TO

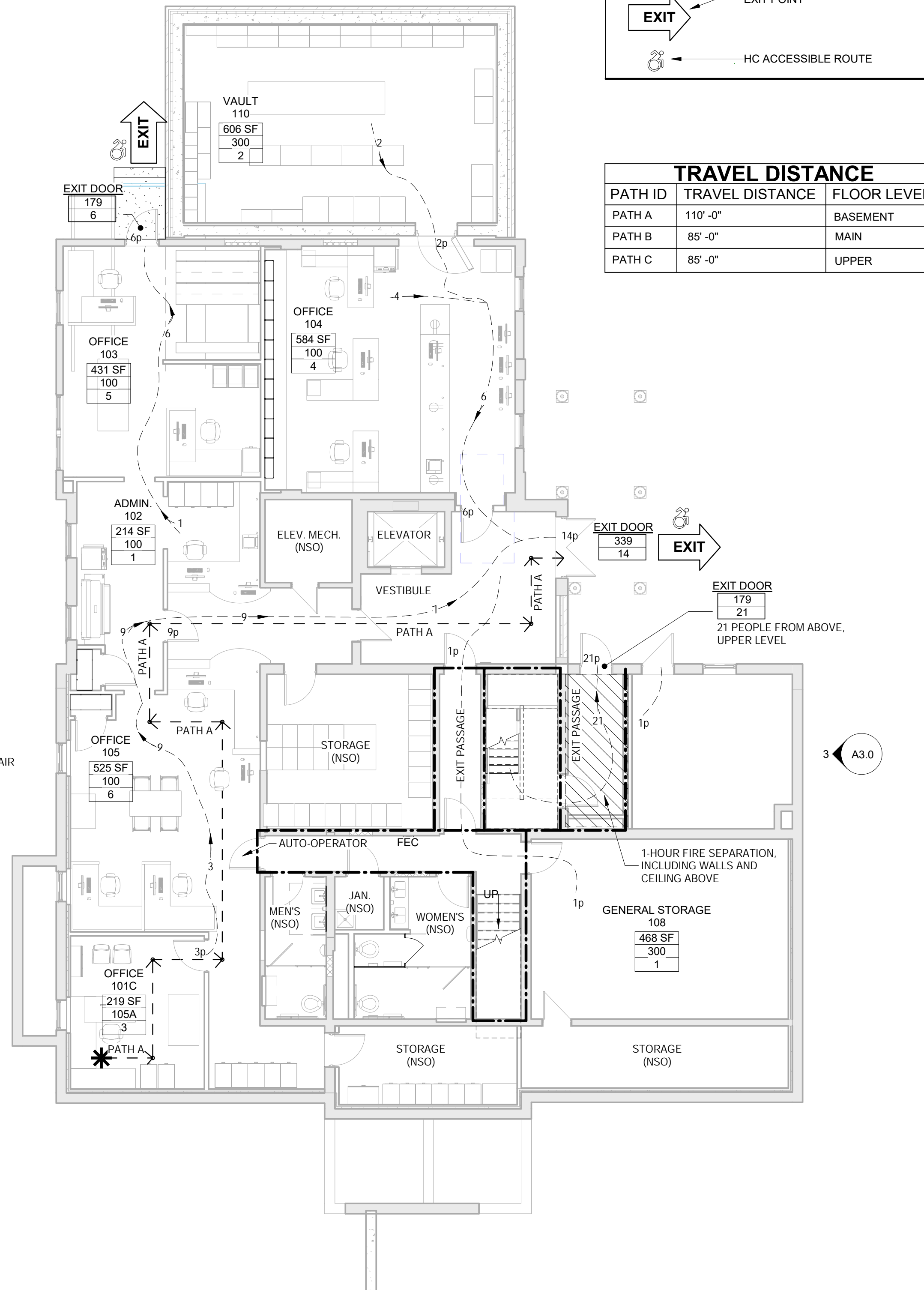
INTERNATIONAL BUILDING CODE	2015
IBC CONNECTICUT SUPPLEMENT	2018
INTERNATIONAL EXISTING BUILDING CODE	2015
INTERNATIONAL MECHANICAL CODE	2015
INTERNATIONAL PLUMBING CODE	2015
NFPA 70 NATIONAL ELECTRIC CODE	2017
INTERNATIONAL ENERGY CONSERVATION CODE	2015
CONNECTICUT FIRE SAFETY CODE	2018
REHABILITATION ACT 1973, SECTION 504, INCLUDING UNIFORM FEDERAL ACCESSIBILITY STANDARDS (UFAS) AND SECTION 504 REGULATIONS	
ICC/ANSI A117.1 - 2009	
THE AMERICANS WITH DISABILITIES ACT, TITLE II, INCLUDING THE AMERICANS WITH DISABILITIES ACT	
ACCESSIBILITY GUIDELINES (ADAAG) AND ADA REGULATIONS	
(H) CURRENT CONNECTICUT PUBLIC HEALTH CODES	
(O) CURRENT O.S.H.A. - TITLE 29/LABOR	
(GS) CONNECTICUT GENERAL STATUTES	

### BUILDING INFORMATION

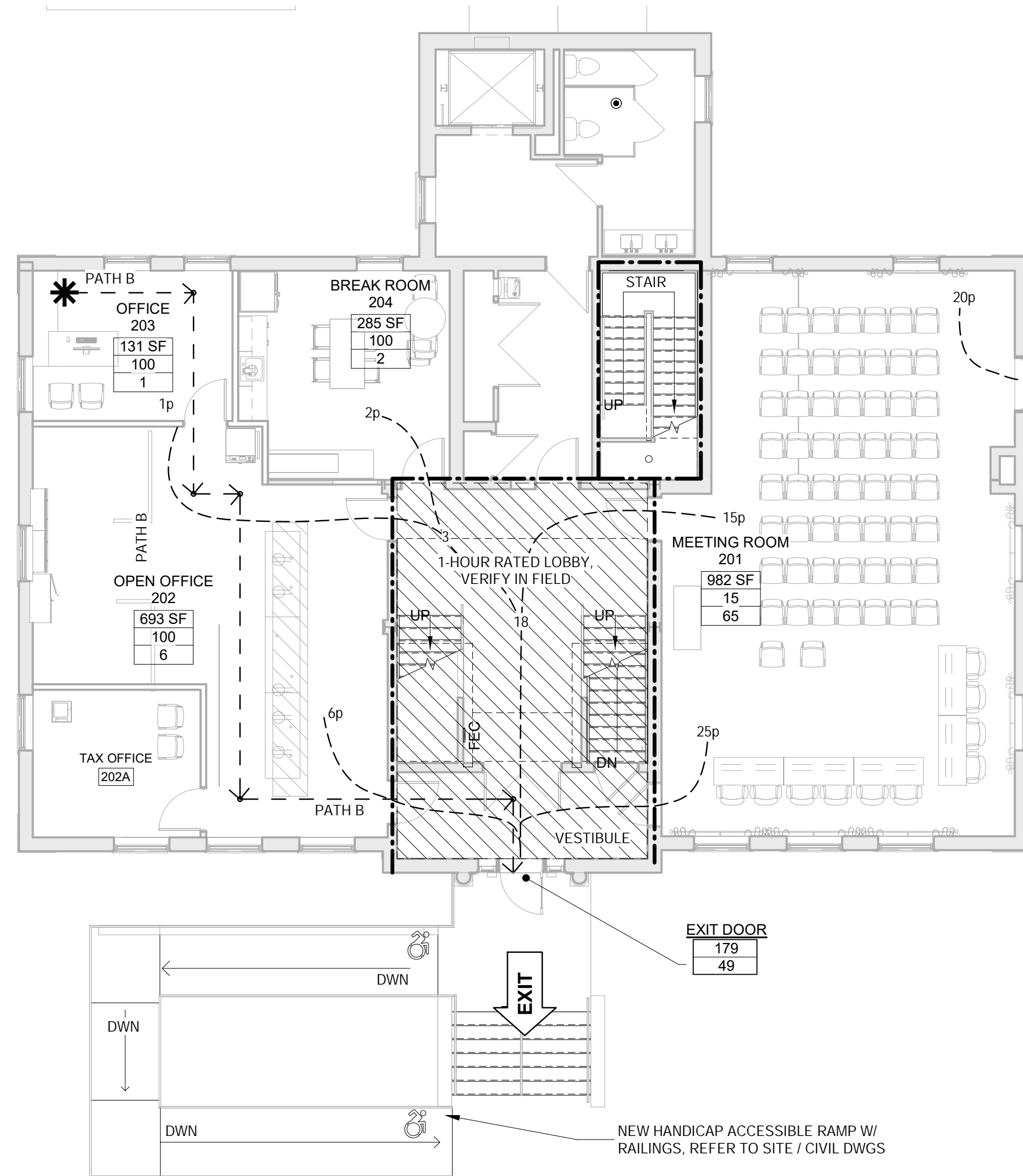
RENOVATIONS AND ADDITION TO: SUFFIELD TOWN HALL SUFFIELD, CT	
PROPOSED CONSTRUCTION START	2020
CLASSIFICATION OF WORK	[IEBC 504] ALTERATION - LEVEL 2 [IEBC 507] ADDITION
1. USE GROUP CLASSIFICATION	[301] BUSINESS (B) PRIMARY SECONDARY ASSEMBLY (A-3)
2. CONSTRUCTION TYPE	[602] TYPE III-B EXISTING/NEW CONSTRUCTION
3. BUILDING HEIGHT	[504] 4 / 75 FT ALLOWABLE STORIES / HEIGHT ACTUAL STORIES / HEIGHT 3 / 45 FT
4. BUILDING AREA	[506] 11,109 SF EXISTING BUILDING AREA PROPOSED ADDITION 585 SF TOTAL AREA / ALLOWABLE 11,694 / 57,000 SF
5. FIRE RESISTANCE RATINGS	[601] EXISTING GENERAL BUILDING CONSTRUCTION [508.4] 1 HOUR USE SEPARATION (B TO A-3) [1019, 713] 1 HOUR SHAFTS - STAIR [713] 1 HOUR SHAFTS - VERTICAL [3002, 713] EXISTING SHAFTS - ELEVATOR [1020.1] EXISTING EXIT ACCESS CORRIDORS
6. OCCUPANT LOAD	[1004.1.2] SEE CODE PLAN DESIGN LOAD PER ROOM 151 occ TOTAL BUILDING OCCUPANCY (B = 86occ, A-3 = 65occ) 1,055 EXIT CAPACITY 1,055
7. NUMBER OF EXITS	[1006.3.1] 2 EXITS REQUIRED 2 EXITS PROVIDED 2 MIN. / FLOOR
8. TRAVEL DISTANCE	[1017.2] (B) 300 FT MAXIMUM TRAVEL DISTANCE ALLOWED (A-3) 250 FT PROVIDED TRAVEL DISTANCES < 250 FT
9. PLUMBING FIXTURE COUNT	[2902.1] REQUIREMENTS B A-3 TOTAL PROVIDED FIXTURES M/F M/F M/F M/F WATER CLOSETS 2/2 1/1 3/3 4/4 LAVATORIES 2/2 1/1 3/3 4/4 DRINKING FOUNTAIN 1 1 2 2 SERVICE SINK 1 1 2 1
10. HANDICAPPED ACCESSIBLE BUILDING	[X] DESIGNATED [ ] NON-DESIGNATED
11. FIRE PROTECTION SYSTEMS	[X] FULL [ ] LIMITED [ ] NONE FIRE SUPPRESSION [X] FULL [ ] LIMITED [ ] NONE FIRE DETECTION [X] FULL [ ] LIMITED [ ] NONE



3 UPPER LEVEL  
R1.1 1/8" = 1'-0"



1 BASEMENT LEVEL  
R1.1 1/8" = 1'-0"



2 GROUND LEVEL  
R1.1 1/8" = 1'-0"

PROPOSED RENOVATIONS  
FOR:  
**SUFFIELD TOWN HALL**  
SUFFIELD, CT  
Project #: 1949

Revisions

Issue Dates:



CONSTRUCTION DOCUMENTS  
FEBRUARY 28, 2020

CODE PLANS

**R1.1**