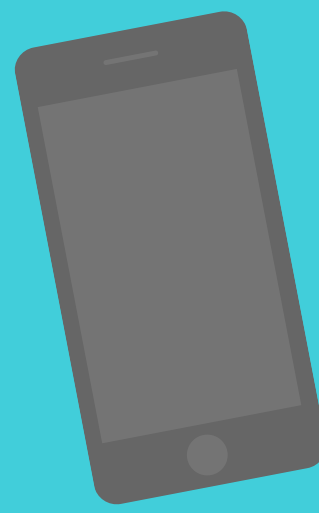


# SMART TAG



## ELEMENTARY CAMPUS DISMISSAL MANAGER, BUS MONITORING & ATTENDANCE

SET DEFAULT DISMISSALS AUGUST 12-18



### CAMPUS DISMISSAL MANAGER (CDM)

- Easily notify campus staff of dismissal changes, absences, early dismissals and late arrivals - all online!
- Utilize web-based technology (desktop or mobile), making the after-school pickup process safe and organized.
- Official way to report and document absences for your elementary student.

**IMPORTANT!**  
Set default  
dismissals  
August 12-18

### BUS MONITORING

- Monitors where and when students board or disembark a bus.
- Provides parents notification of approaching bus.
- Allows District to verify accurate ridership, ensure students only board designated bus and exit designated stop.
- Provides driver access to students' medical emergency information.

Find FAQs, videos and the Parent Portal login:  
[www.eanesisd.net/smarttag](http://www.eanesisd.net/smarttag)

