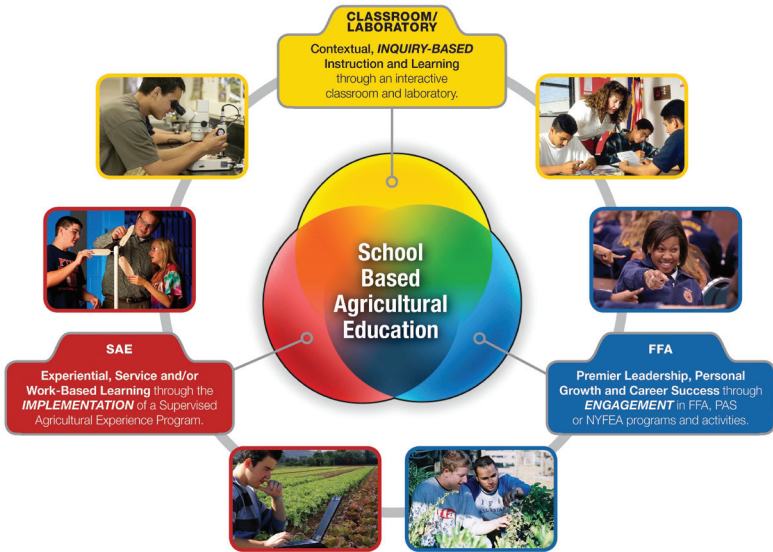


# Student Organizations

CT Farm Bureau, All Purebred Breed Organizations, FFA Alumni Association  
National FFA Organization, 4-H, Grange, TSA and FBLA



# ANIMAL SCIENCE



**K** **Killingly High School** Updated 1/2020\*  
Ms. Donna Grant, Career Coordinator  
860-779-6663 • dgrant@killinglyschools.org  
226 Putnam Pike, Dayville, CT 06241 • www.killinglyschools.org

**Killingly High School**

## Career Pathway: Animal Science

### Career Cluster: Agricultural Education

To complete the **Animal Science Career Pathway**, students must complete all of the required courses within Section 1.

To complete this **Advanced Pathway**, students must complete all of the required courses in Section 1 and earn a total of 2 credits from the "Additional Courses" Section.

Section 1- Required Courses	Credits Earned at KHS	College Credits Earned
Agricultural Education I	1	
Ag II Production Animal Science	1	
Production Animal Science Year 1	1.5	
Production Animal Science Year 2	1.5	
PGR 1.8 – Job Shadow in Animal Science	(This requirement will be implemented for all students in the graduating class of 2021 and beyond)	
Section 2- Additional Courses	Credits Earned at KHS	College Credits Earned
Companion Animal Science	1.5	
Projects in Agricultural Mechanics	.5	
Equine Science	.5	
Anatomy and Physiology	1	
Biology AP	1.5	
Environmental Science AP	1.5	
Honors Chemistry	1	
Entrepreneurship	.5	
Business Management	1	
Business Communication	1	
Communication and Speech	.5	
Accounting	1	
Intro to Data Science	.5	
App Creators	.5	

**Animal Science Teacher:**  
Mrs. Bonnie Kegler, Room 1817  
bkegler@killinglyschools.org

# ANIMAL SCIENCE



**Occupations Related to the Animal Science Career Pathway:** Veterinarian Technician, Animal Control Officer, Dairy Farm Employee, Animal Nutritionist, Feed and Equipment Sales, Small Animal Caretaker, Dog Groomer, Horse Stable Manager, Breeding Purebred Animals and Showing Competitively.

In the Animal Science Pathway students are exposed to a wide variety of animal health, livestock production and companion animal topics. Animal genetics, conformation, behavior, reproduction, nutrition and animal management are each explored in a classroom setting and supported with an array of field experiences. Instruction in the production, evaluation and consumption of animal products including: milk, meat, cheese and eggs are included in this curriculum. Opportunities to compete in a variety of evaluation events are offered through student participation in the FFA.

**Units Covered:** Livestock Management, Animal Nutrition, Anatomy, Genetics and Reproduction, Livestock Selection and Judging, Introduction to Companion Animals, Behavior and Training of Domestic Animals, Animal Health and Diseases, Production and Evaluation of Meat, Dairy and Poultry Products.

**UConn ECE:** Animal Science students are given the opportunity to earn six credits to UConn through the Early College Experience program. Students who earn a C or higher in Introduction to Companion Animals or Biotechnology will receive a college transcript from UConn. These courses have an 87% transfer rate to other colleges.