

# AMITY REGIONAL SCHOOL DISTRICT #5

## ATHLETIC FACILITIES IMPROVEMENTS 2019



# AMITY REGIONAL SCHOOL DISTRICT #5

The Amity Regional School District prides itself as a highly regarded educational institution. The 3 A's of Amity: Academics, Arts, and Athletics provide a comprehensive and highly competitive atmosphere. To that end, we strive to provide our athletic teams with the best equipment, facilities, and opportunity to be highly successful

Update our facilities to 2020's standards from the 1990 standards

- Stadium Field: 1999

- Lights/Poles: 1988

- Track: 1999

- Scoreboard: 1996

- Field House: 1995

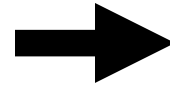
- Field #3 Bleachers/walkway: None

# ANALOGY – Improvements in Education

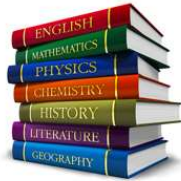
Blackboard



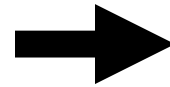
Smartboard



TEXTBOOK



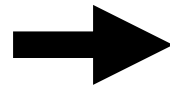
COMPUTER



Sod Field



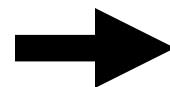
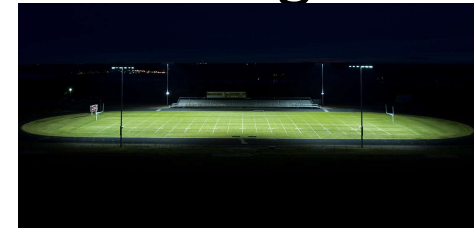
All – Weather Field



Metal-Halide Lights



LED Lights



# Amity Athletics

## Outstanding Athletics

- 3 straight Michaels Achievement Cups
- 60+ State Titles

\*WE DON'T MEASURE OUR OVERALL SUCCESS IN JUST WINS/LOSSES and CHAMPIONSHIPS, HOWEVER:

## CIAC field sports championships

(Field Hockey, Football, Soccer, Lacrosse)

Girls Soccer 2006   Field Hockey 1995   Football 1978

## SCC Championship history in field sports

Girls Soccer (2006), Boys Soccer (2008), Boys Lacrosse (2003),  
Girls Lacrosse (2006)

# GOAL

Provide our teams and  
student-athletes the best  
facilities and opportunity  
for success

# PROJECT

- New Track
- LED Lighting & Poles
- All-Weather Field
- Scoreboards – Stadium & Field #3
- Bleachers on field #3 w/ADA compliant walk

# Track Replacement

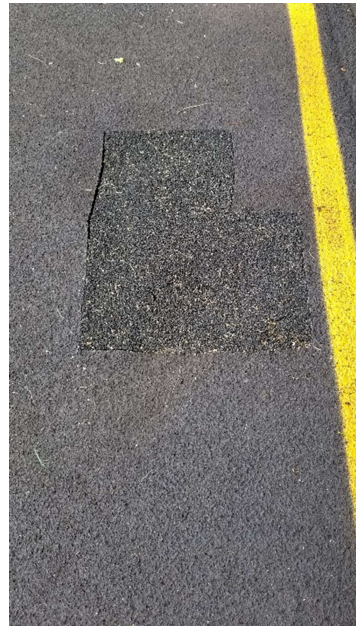
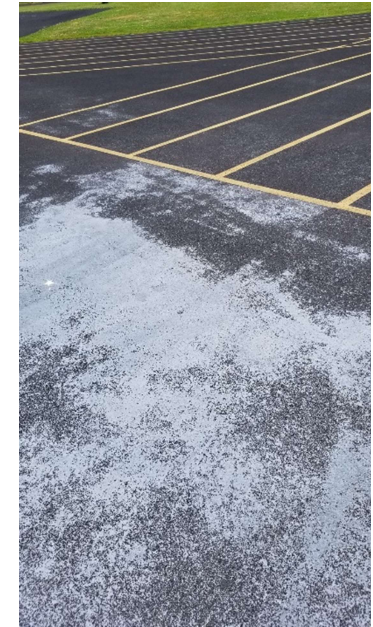
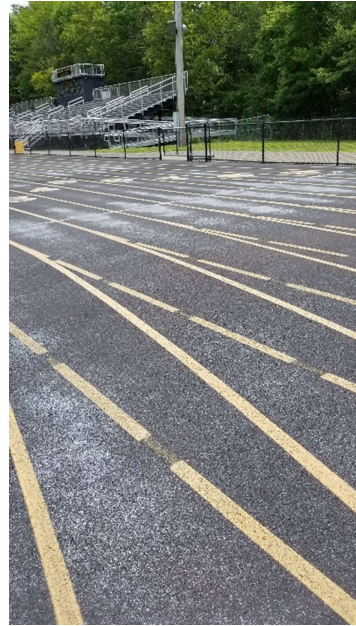
Has served its useful life

- Installed 1999
- Resurfaced 2010

Beginning to have issues

- Sink hole in lane 8 (repaired)
- Surface worn off
- Cuts in track (repaired)





# CURRENT PICTURES OF OUR TRACK

TAKEN  
JULY 11, 2019

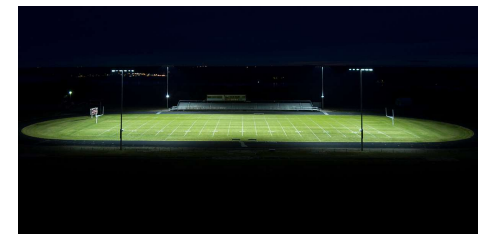
# Poles & LED Lighting

- Wood poles are at end of life expectancy
  - Installed 1988
- Current metal-halide lights are inefficient, costly to operate, and have high “spillage”
- Repairs to the lighting system over the years including a non-functioning row in 2018 due to wiring issues



## UPGRADE POLES & LED LIGHTS

- Efficient energy consumption
- Instant On/Off
- Almost ZERO “spillage” outside of field & to neighbors
- Poles will be metal and much safer





# Scoreboard

- LED technology has revolutionized the scoreboard industry
  - Lower energy consumption
  - Increased efficiency and connectivity to press box
- Virtual scoreboard which can switch between any sport, not just football
- Video can be streamed through it as well, especially at graduation



# All-Weather Field

- Reduction of canceled games or practices due to wet fields to almost zero (only lightning)
- No cost for seeding, fertilization, watering, anti-pest, and anti-fungal treatments
- No more renting fields for practice/try-outs (field hockey, B/G Soccer, B/G lacrosse)
- We are the LAST DRG A and DRG B school without an all-weather field, putting us at a significant competitive disadvantage

# SCC/CIAC STATE CHAMPIONSHIPS

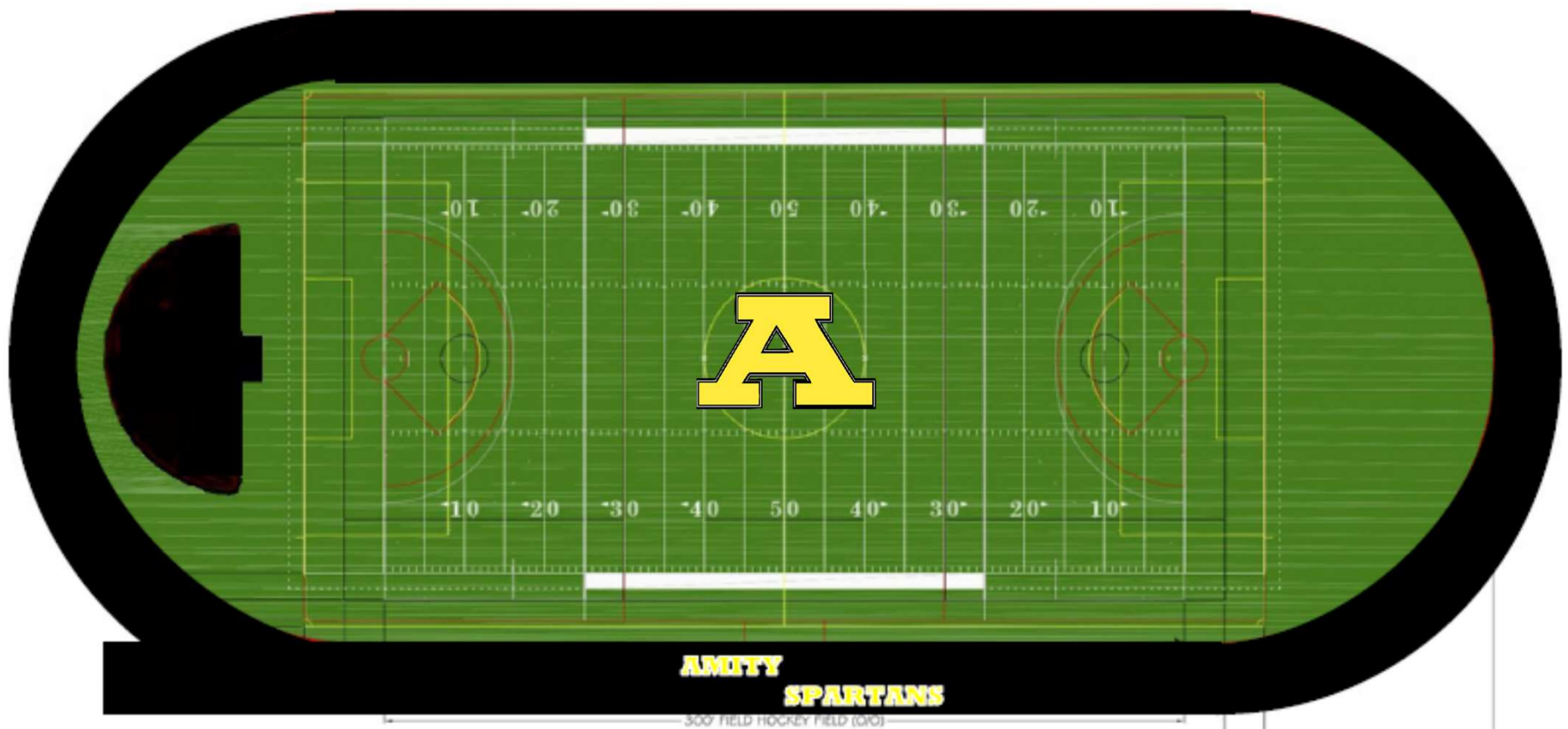
- ALL 6 field sports league and state championships are held on all-weather fields
- This gives ALL teams with a all-weather field a distinct competitive advantage
- Playing on an all-weather field is not the same as a sod field. The ball rolls much differently, thus changing the game.

# Why All-Weather Field in Stadium?

- Current use is 1 sport: football (3 levels – 75 athletes)
  - Field cannot take much use with continuous drainage issues
- Will increase to 6 sports + physical education
  - Football (3 levels) – 75 athletes
  - Field Hockey (3 levels) – 70 athletes
  - Girls Soccer (3 levels) – 55 athletes
  - Boys Soccer (3 levels) – 66 athletes
  - Girls Lacrosse (3 levels) – 53 athletes
  - Boys Lacrosse (3 levels) – 81 athletes

18 TEAMS (400 Athletes) + PHYS. ED. CLASSES!!

# Sample Stadium Field Design



# HS Athletics Use of the Stadium Field

## Current Use:

### FALL

- Freshman Football (5 games), JV football (5 games), Varsity Football (5 games)
- Powderpuff Football (1 game every other year)
- No current practice use of the field

### SPRING

- No current use of the field for practice or games

***TOTAL GAMES = 16***

***TOTAL PRACTICES = 0***

## Projected Use:

### FALL

- Football games as above + practices
- Boys & Girls Soccer – practices + 8 varsity girls games, 8 varsity boys games, several junior varsity games, some freshman games
- Field Hockey – practices + 8 varsity games, 8 JV games, 4 freshman games

### SPRING

- Boys & Girls Lacrosse – 8 varsity girls games, 8 boys varsity games 8 JV girls games, 8 JV boys games+ practices

***TOTAL GAMES = 90 – 100***

***TOTAL PRACTICES = 100-150***



# Physical Education Use

## Expanding ARHS Physical Education Classroom/Curriculum

*An all-weather field creates more opportunities for students in physical education to participate in team sports, lifetime and fitness activities and build leadership skills, pride and confidence, to improve physical fitness/performance.*

### *Impacts of Weather*

- Provides a year-round, all-weather playing surface that is able to withstand extended, multi-purpose use
- Extend curricular units and usage further into the fall and earlier in the spring

### Expands Amity's Physical Education Classroom

- *Help provide space for classes (there can be up to 5 classes running each period)*
- *Guarantee of 2-3 extra teaching stations*
- *Promotes team teaching opportunities and collaboration to enhance learning*
- *Fitness program can be expanded to keep up with the trending workouts*
- *Enhances our entire curriculum*

# Sample Stadium Field Schedule - Fall

	MONDAY	TUESDAY	WEDNESDAY	THURSDAY	FRIDAY	SATURDAY	SUNDAY
7:00 AM	PE	PE	PE	PE	PE	Foot/Soccer/FH	Community Use
8:00	PE	PE	PE	PE	PE	Foot/Soccer/FH	Community Use
9:00	PE	PE	PE	PE	PE	Foot/Soccer/FH	Community Use
10:00	PE	PE	PE	PE	PE	Foot/Soccer/FH	Community Use
11:00	PE	PE	PE	PE	PE	Foot/Soccer/FH	Community Use
12:00	PE	PE	PE	PE	PE	Foot/Soccer/FH	Community Use
1:00 PM	PE	PE	PE	PE	PE	Foot/Soccer/FH	Community Use
2:00	PE	PE	PE	PE	PE	Foot/Soccer/FH	Community Use
3:00	Football	Field Hockey	Football	Football/Field Hockey	Soccer / Field Hockey	Community Use	Community Use
4:00	Football	Field Hockey	Football	Football/Field Hockey	Soccer / Field Hockey	Community Use	Community Use
5:00	Football	Field Hockey	Football	Football/Field Hockey	Soccer / Field Hockey	Community Use	Community Use
6:00	Soccer / Field Hockey	Soccer	Soccer / Field Hockey	Soccer	Football	Community Use	Community Use
7:00	Soccer / Field Hockey	Soccer	Soccer / Field Hockey	Soccer	Football	Community Use	Community Use
8:00	Soccer / Field Hockey	Soccer	Soccer / Field Hockey	Soccer	Football	Community Use	Community Use

# Sample Stadium Field Schedule - Spring

	MONDAY	TUESDAY	WEDNESDAY	THURSDAY	FRIDAY	SATURDAY	SUNDAY
7:00 AM	PE	PE	PE	PE	PE	Track	Community Use
8:00	PE	PE	PE	PE	PE	Track	Community Use
9:00	PE	PE	PE	PE	PE	Track	Community Use
10:00	PE	PE	PE	PE	PE	Track	Community Use
11:00	PE	PE	PE	PE	PE	B/G Lacrosse	Community Use
12:00	PE	PE	PE	PE	PE	B/G Lacrosse	Community Use
1:00 PM	PE	PE	PE	PE	PE	B/G Lacrosse	Athletic Dept Use
2:00	PE	PE	PE	PE	PE	B/G Lacrosse	Athletic Dept Use
3:00	Track / G. Lacrosse	Track / G. Lacrosse	Track / G. Lacrosse	Track / G. Lacrosse	Track / G. Lacrosse	B/G Lacrosse	Athletic Dept Use
4:00	Track / G. Lacrosse	Track / G. Lacrosse	Track / G. Lacrosse	Track / G. Lacrosse	Track / G. Lacrosse	B/G Lacrosse	Athletic Dept Use
5:00	Track / G. Lacrosse	Track / G. Lacrosse	Track / G. Lacrosse	Track / G. Lacrosse	Track / G. Lacrosse	Community Use	Athletic Dept Use
6:00	B. Lacrosse	B. Lacrosse	B. Lacrosse	B. Lacrosse	B. Lacrosse	Community Use	Athletic Dept Use
7:00	B. Lacrosse	B. Lacrosse	B. Lacrosse	B. Lacrosse	B. Lacrosse	Community Use	Athletic Dept Use
8:00	B. Lacrosse	B. Lacrosse	B. Lacrosse	B. Lacrosse	B. Lacrosse	Community Use	Athletic Dept Use

# STADIUM FIELD USE

Sport/Event Type	Current Actual # of Events	Projected # of Events	Increase in # of events
Youth Football Contests	32 (Sundays)	32	0
High School Football - Varsity Practice & Contests	5	69	64
High School Football - JV Contests	5	5	0
High School Football - Freshmen Contests	5	5	0
Field Hockey Contests (Varsity, JV, Freshman)	0	20	20
Soccer – Boys and Girls Contests	0	16	16
Soccer Youth Contests	0	TBD	TBD
Lacrosse Boys and Girls Contests	0	32	32
Lacrosse Boys and Girls - Freshman & JV Contests	0	TBD	TBD
Lacrosse Boys and Girls Practice ( 1/2 field each)	0	80	80
Lacrosse Boys and Girls Youth Contests	0	TBD	TBD
AHS Graduation Ceremony	1	1	0
HS League - State Tournament Contests	0	10	10
AHS Physical Education (7 hours = 1 use)	0	100	100
Park and Recreation Camps from member towns	0	TBD	TBD
<b>Totals</b>	<b>48</b>	<b>370</b>	<b>322</b>

# Other teams who will benefit

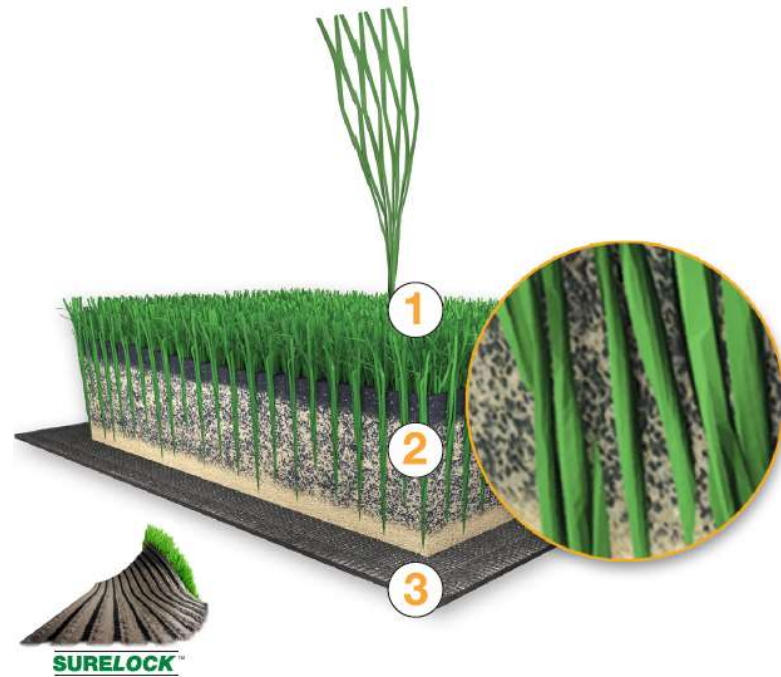
- Baseball – less use of field #2 (the outfield of the practice baseball diamond – will also save our varsity field)
- Baseball/Softball – Can use all-weather field for tryouts as the fields are always muddy, snow covered, and not ready
- The Band, Cheer, & Dance Teams will also utilize the field for practices/halftime performances

## Bleachers and walkway for Field #3

- We will continue to play some varsity, JV, and freshman boys/girls soccer and boys/girls lacrosse games on the field
- Currently the field has no access for spectators with disabilities
- Currently small sets of bleachers are placed at the top of the hill. Most spectators still must stand

# Classic HD

- Carpet:
  - Fiber: Classic HD
  - Backing: Finger Unit
  - Gauge:  $\frac{3}{4}$ "
- Infill:
  - Silica Sand
  - "A" Cryogenic Rubber
  - "B" Cryogenic Rubber
- Standard Products
  - FTHD-1 2.50"
    - Bottom Layer: 1lb/sf sand
    - Middle Layer: 5.2lbs/sf sand mixed with 2.6lbs/sf A cryo rubber
    - Top Layer: 0.4lbs/sf B cryo rubber
  - FTHD-57 2.25"
    - Bottom Layer: 1lb/sf sand
    - Middle Layer: 5.2lbs/sf sand mixed with 1.8lbs/sf A cryo rubber
    - Top Layer: 0.4lbs/sf B cryo rubber
  - FTHD-2 2.00"
    - Bottom Layer: 1lb/sf sand
    - Middle Layer: 2.65lbs/sf sand mixed with 2.2lbs/sf A cryo rubber
    - Top Layer: 0.4lbs/sf B cryo rubber



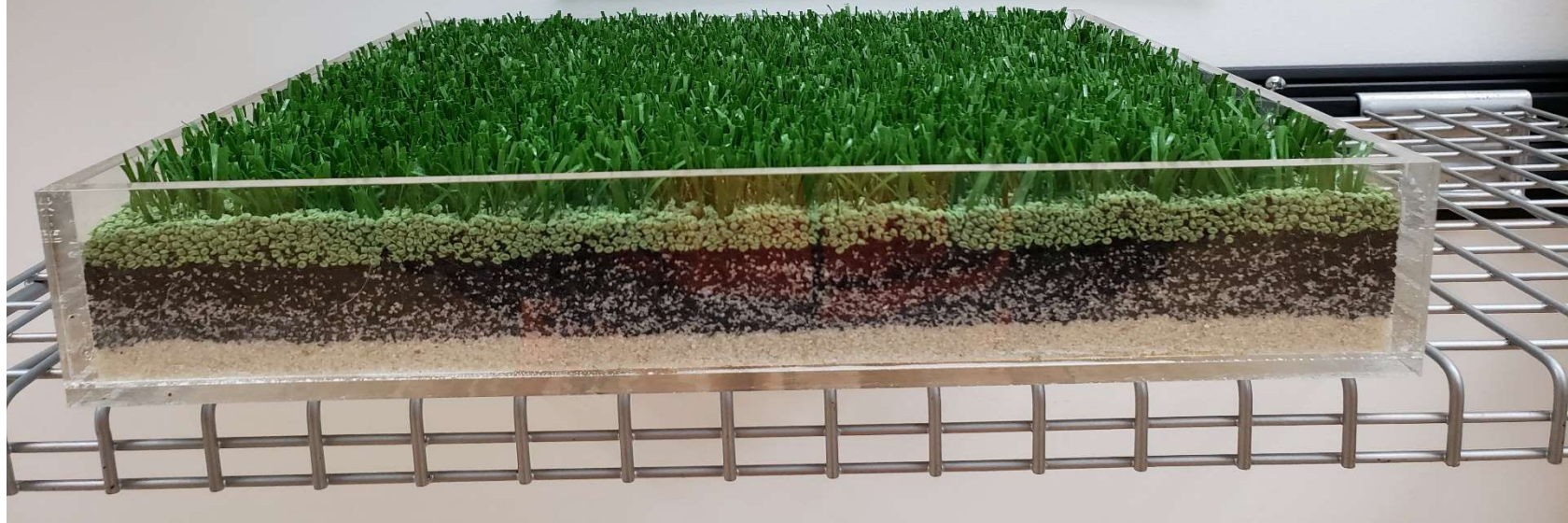
THE ULTIMATE  
SURFACE EXPERIENCE

The images show various components and stages of a green roof system:

- 1. A cross-section of a green roof showing the structural layers and vegetation.
- 2. A close-up of a green roof edge with a drainage channel.
- 3. A close-up of a green roof edge with a drainage channel.
- 4. A close-up of a green roof edge with a drainage channel.
- 5. A close-up of a green roof edge with a drainage channel.
- 6. A close-up of a green roof edge with a drainage channel.
- 7. A close-up of a green roof edge with a drainage channel.
- 8. A close-up of a green roof edge with a drainage channel.

The text below the images describes the components and stages of a green roof system:

- 1. The drainage system is shown in the image of a drainage channel.
- 2. The drainage system is shown in the image of a drainage channel.
- 3. The drainage system is shown in the image of a drainage channel.
- 4. The drainage system is shown in the image of a drainage channel.
- 5. The drainage system is shown in the image of a drainage channel.
- 6. The drainage system is shown in the image of a drainage channel.
- 7. The drainage system is shown in the image of a drainage channel.
- 8. The drainage system is shown in the image of a drainage channel.







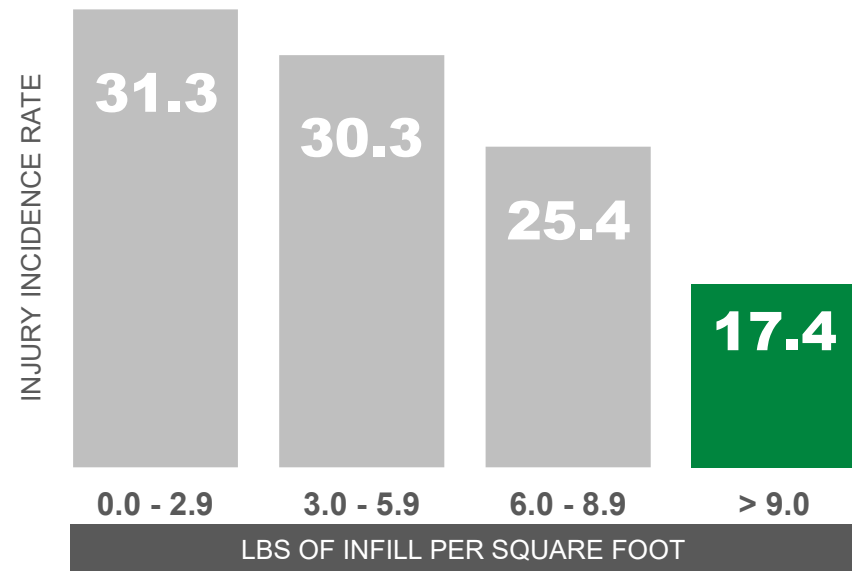
## PROVEN SAFE

**THE HIGHER THE  
INFILL WEIGHT  
THE LOWER THE  
INJURIES**

SEVEN-YEAR STUDY OF SYSTEMS WITH  
VARIOUS INFILL WEIGHT

**FIELDTURF** VS COMPETING SYSTEMS

INCIDENCE, MECHANISMS, AND SEVERITY OF GAME-RELATED  
HIGHSCHOOL FOOTBALL INJURIES

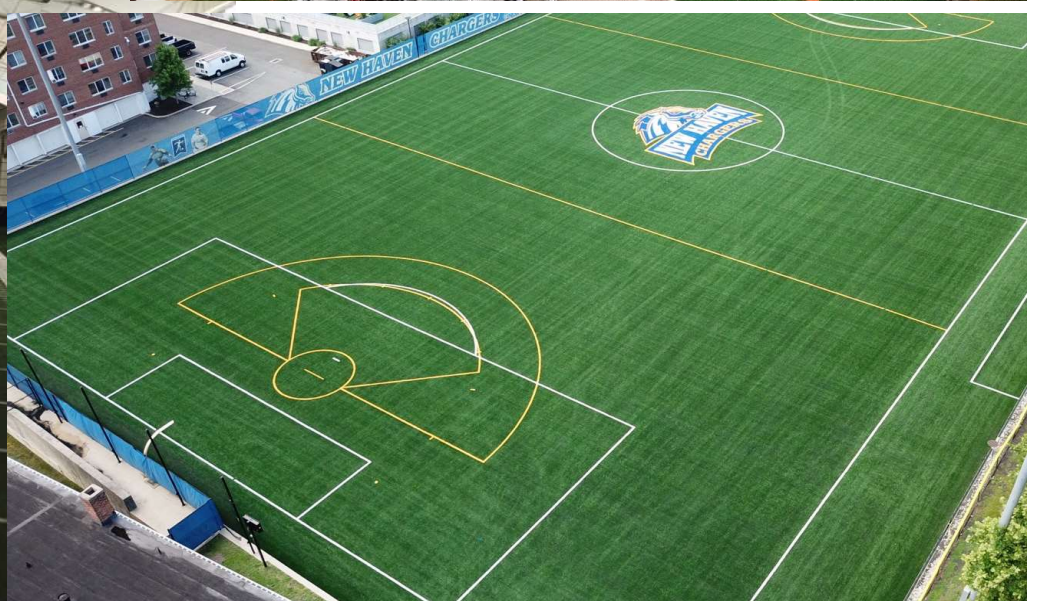
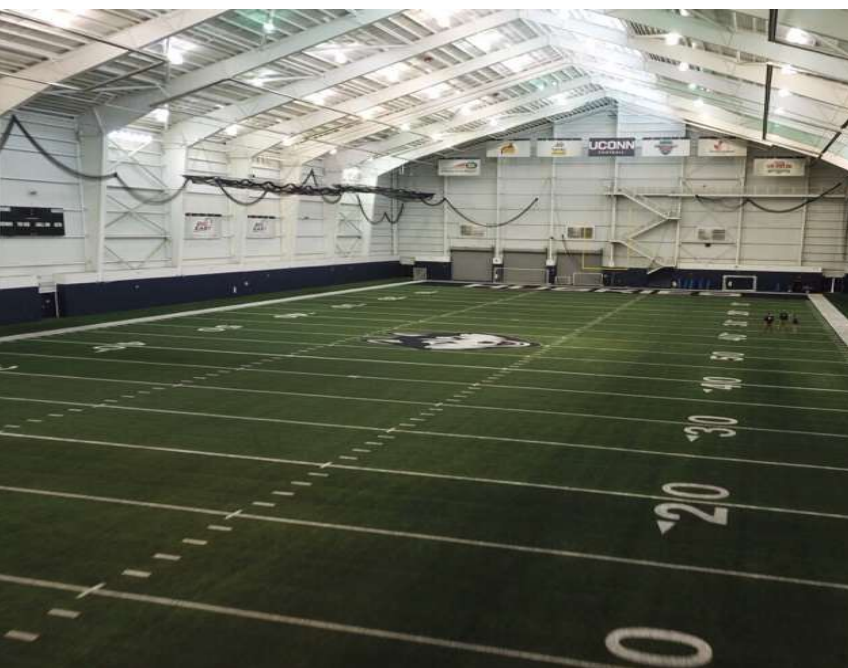




## THE LOCAL TURF SPECIALISTS



# COLLEGE INSTALLS





# LOCAL HIGH SCHOOL INSTALLS

