



Haldane Central School District



Capital Referendum 2019
District Facilities Improvement Program



**Health,
Safety,
&
Infrastructure
Repairs**

**Academic
Program
Improvement**

+

**Preservation
of
Physical Plant**

**Soft
Costs/
Incidentals**

District Facilities Improvement Program

**Health,
Safety,
&
Infrastructure
Repairs**



District Facilities Improvement Program

Health, Safety, & Infrastructure Repairs

Move pump room electric panel	Relocate an electrical panel that is currently in a water pump room	Main	\$50,000.00
Bus lift repair	Lift is broken and we cannot use the repair bay to work under a bus	Bus Garage	\$30,000.00
Ceiling tile replacement	The drop ceiling tiles of the 1st floor contain asbestos	Mabel Merit	\$30,000.00
Water heater replacement	Beyond useful life; some not operational; includes food service hot water	Main/Cafeteria	\$6,000.00
Replace air handling units	Beyond useful life; not fully functional; parts to repair no longer available	Cafeteria	\$35,000.00
Equipment replacement	2 of 3 freezers not functioning; gas ovens are obsolete and repair parts no longer available	Cafeteria	\$100,000.00
Floor replacement	Damaged. Holes in marmoleum pose a tripping hazard and a sanitary concern in lunchroom	Cafeteria	\$35,000.00
Lunch table replacement	Damaged/broken tables. Includes seating areas in High School for eating/collaborating	Cafeteria	\$38,000.00
Window screens	Currently unable to open windows for fresh air because of danger of bees and other pests	Middle School	\$17,000.00
Climate control	Improve air quality/shared space cooling capability	Upper Music Room	\$27,515.00
Climate control	Improve air quality/shared space cooling capability	Band/ Multi Room	\$40,585.00
Climate control	Improve air quality/shared space cooling capability	Main Office/ Nurse	\$49,320.00

Health, Safety, & Infrastructure Repairs

Dehumidifiers	Improve air quality/help prevent mold growth	Districtwide	
Guide rails	There is no barrier to keep vehicles from sliding down the hill	Along Craigside Drive	\$30,000.00
Access to 2nd floor mechanicals	Currently maintenance staff must remove a ceiling tile and use a step ladder to perform preventive maintenance of HVAC equipment in High School	High School	\$15,000.00
Camera system upgrade	Security	Districtwide	\$45,600.00
Upgrading analog cameras to IP	Security	Districtwide	\$24,000.00
Door/swipe card upgrades	Security	District Office	\$10,000.00
Visitor management system	Security	Districtwide	\$16,000.00
Safety/security upgrades	Security audit recommendations	Districtwide	\$100,000.00

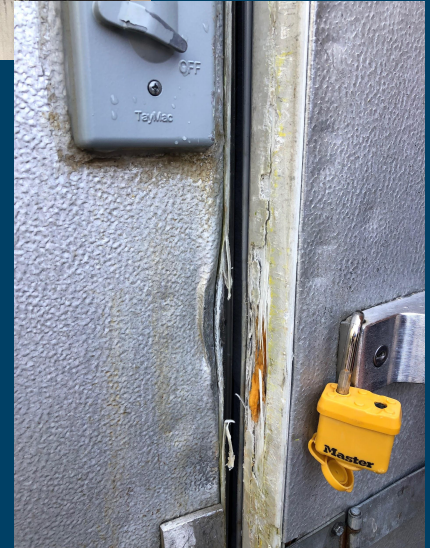
Bus Lift Repair

Lift is inoperable; bay cannot be used for under-bus repairs



Cafeteria Equipment Replacement

2 of the 3 freezers
on campus are not working



Cafeteria Equipment Replacement

One freezer can only be
opened with a crowbar

Food Service Director, Nancy Norton,
must pry open the freezer
and chisel the ice every day
- including Saturday & Sunday -
to prevent the alarm from sounding



Cafeteria Equipment Replacement

Gas ovens are obsolete;
replacement parts unavailable

Meat slicer not functional



Cafeteria Floor & Lunch Tables

Holes in marmoleum floor pose
tripping hazard and sanitary concern

Tables are damaged and missing seats

Lack of lunchtime seating in
High School



Add photo of
HS students
on floor
during lunch?



Craigside Drive Guide Rails

Lack of guide rails at parking spaces
along Craigside Drive; risk of cars
rolling over hill toward field



**Health,
Safety,
&
Infrastructure
Repairs**

**Academic
Program
Improvement**



District Facilities Improvement Program

Academic Program Improvement



Multi-use space creation	Renovate 2nd floor of District Office to move offices currently co-mingled with educational space in Mabel Merritt building.	District Office 2nd Floor	\$371,600.00
Additional classroom space			
ADA compliance	Renovate bathrooms in Mabel Merritt building for ADA compliance.	Mabel Merritt Building	

Multi-Use Space Creation

2nd floor of District Office
provides ample space for office
creation

Will free Mabel Merritt rooms for
classroom use





**Health,
Safety,
&
Infrastructure
Repairs**

**Academic
Program
Improvement**

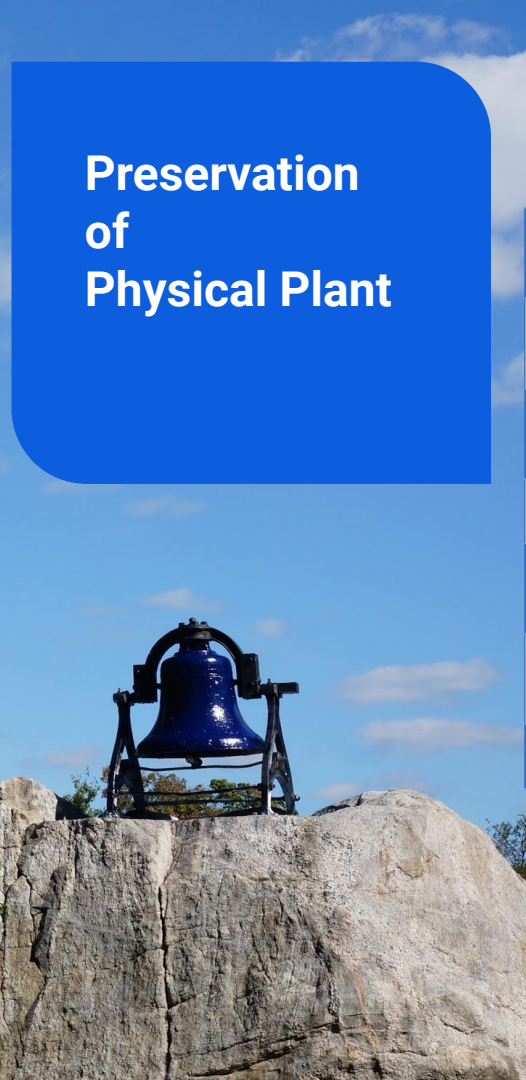
+

**Preservation
of
Physical Plant**

District Facilities Improvement Program

Preservation of Physical Plant

Full window replacement	Window sills tilted inward allowing for water infiltration/water damage/mold growth. Improve emergency egress windows.	Elementary School	\$256,000.00
Stairwell curtain wall/ exterior doors	Replace rusted/old doors	Elementary School	\$68,000.00
Window shades/ tinting/awnings	Reduce overheating issues due to sun	Districtwide	\$63,500.00
Playground equipment	Replace old swing sets that pop out of ground	Districtwide	\$40,000.00
Paving	Playground and surrounding area severely cracked. Craigside Drive from Cafeteria Lot to Bell Lot to be repaved, as well.	Districtwide	\$355,600.00
Storage buildings	Renovate dilapidated storage buildings to protect investment in equipment.	Ballfield	\$35,000.00
Paint	Auditorium, large gym, and adjacent areas	Auditorium	\$90,000.00



Full Window Replacement

Elementary School windows are
not watertight

Emergency egress windows
must also be improved



Exterior Door Replacement

Some Elementary School
doors are rusted

Do not automatically close in
cold weather



Playground Equipment

Replace old swing sets

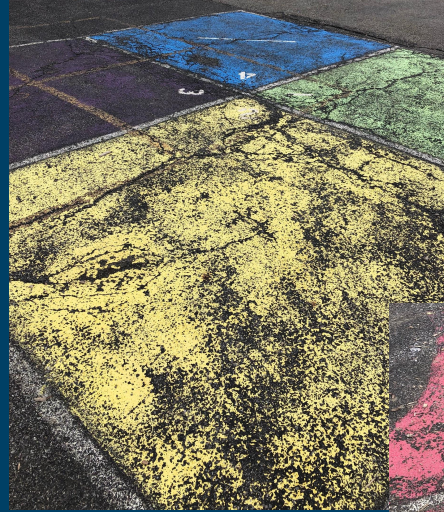
Missing swings;
structure pops out of ground
when in use



Campus Paving

Playground and surrounding
area severely cracked

Craigside Drive from
Cafeteria Parking Lot to
Bell Parking Lot needs repaving



Fencing

Rusted, broken fence along
Craigside Drive must be replaced
to improve safety and
campus aesthetic



**Health,
Safety,
&
Infrastructure
Repairs**

**Academic
Program
Improvement**

+

**Preservation
of
Physical Plant**

**Soft
Costs/
Incidentals**

District Facilities Improvement Program



Soft Costs/ Incidentals


Soft costs/Incidental costs/Non-contract costs of construction include, but are not limited to: architect fees, survey/engineering services, legal services, insurance, site development costs, bank fees, furniture, and equipment.

Districtwide

\$2,305,328.00



Please Vote!
Tuesday, May 21st



7:00 AM - 9:00 PM
Haldane Elementary/Middle School
Room 105

