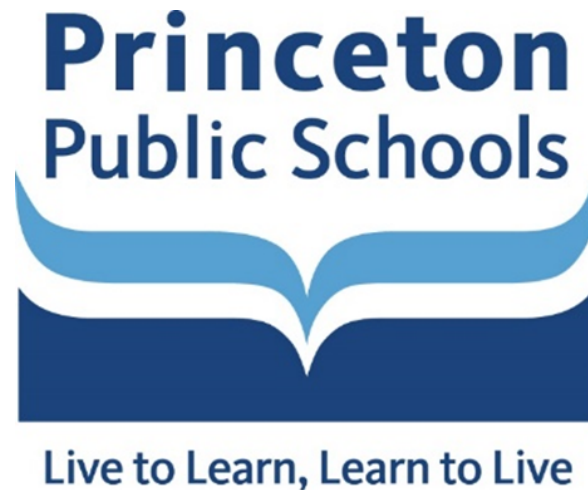


Princeton School Facilities Plan

Revised Facilities & Educational Programming Analyses

February 19, 2020



FACILITIES – BUILDINGS, SITES, CAPACITY, UTILIZATION AND PROGRAMMING

PRINCETON – PROCESS & TASKS TO DATE

FOCUS GROUP

- Kick Off Meeting
- Discussed Past LRFP & Referendum Activities
- Defined Goals

INVESTIGATIVE WORK

- In-Progress
- Reviewed Available Documents
- Toured Schools
- Assess Existing Conditions (HL)
- Understand Current Referendum Efforts

STAKEHOLDER MEETINGS

- In-Progress
- Principals, Athletic-Director, Facilities Dept (Others TBD)
- Technical Committee

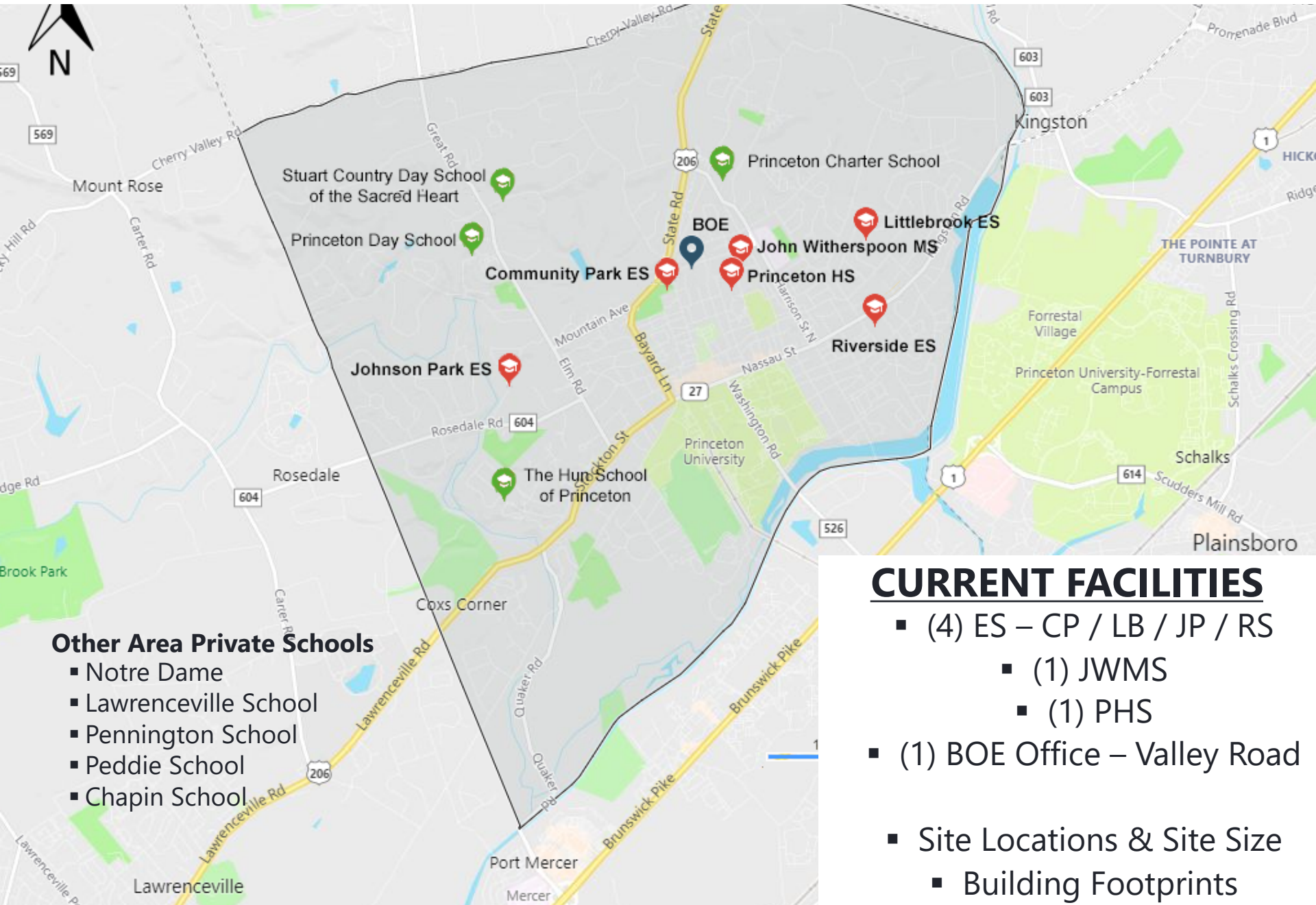
FINDINGS

- In-Progress
- Utilization & Capacity by School
- Summarize High Level Findings by School

COMMUNITY WORKSHOP

- Gain Input

PRINCETON SCHOOL DISTRICT FACILITIES MAP



PRINCETON - COMMUNITY PARK ES



PRINCETON - COMMUNITY PARK ES



INFORMATION

- Built +/- 1960's
 - Additions +/- 2005
 - 1 & 2 Story
 - Site +/- 7 Acres
 - Parking +/-54
 - Footprint +/- 41,789 sf
 - Building sf
 - 1st Flr: 41,789 sf
 - 2nd Flr: 19,488 sf
 - Total: 61,277 sf (*)
- (*) Excludes Part. Basement

COMMUNITY PARK ES – FACILITY COMMENTS

STRENGTHS:

- Community Facility Use
- 2nd Floor Program @ CR Wing (Increased Density)
- Adj. Municipal Facilities / Community Park
- Music / Art Program Space

DEFICIENCIES:

- Parking Shortage
- Restricted Vehicular Circulation
- Hidden Entrance
- Taxed Core Spaces (Gym, Cafetorium, Kitchen)
- Collaboration/Flexible Space (Teacher & Student)
- Media Center
- Space for Inclusion
- Sustainable - Energy Upgrades / Lighting / PV etc...
- Infrastructure Upgrades (Utility Services / Toilets)
- Tight Access to Basement Level

COMMUNITY PARK ES – FACILITY COMMENTS

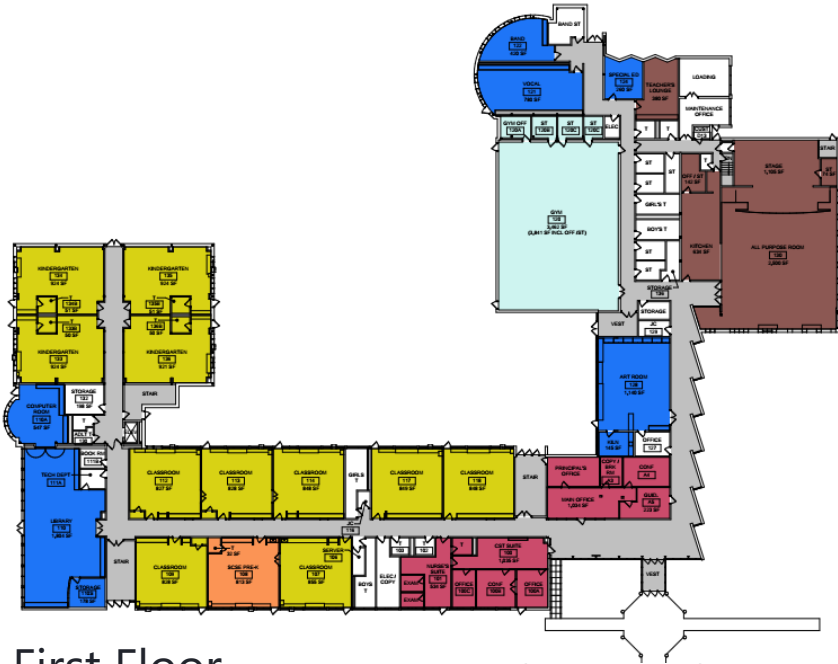
OPPORTUNITIES - BLDG

- Adaptive Reuse of Space
- Core Space Expansion
- Support for Specialized Programs
- Provide Collaboration & Flexible Space (Students & Staff)
- Pride & Image of School
- Sustainability / Energy Efficiency

OPPORTUNITIES - SITE

- Limited Site Area Available to Expand
- Respect Site Features (Will Impact Outdoor Space)

COMMUNITY PARK ES - CAPACITY



First Floor



Second Floor

Existing Room Inventory (School Model) Report		
CP	Spiezle (.90)	MMI/ PS&S (.90)
CR Count	20	21
SCSE	3	1
Ed Capacity	384	386
Enroll 2019-20 (PK-5)	407	407
Seat Deficit/ Surplus	-23	-21

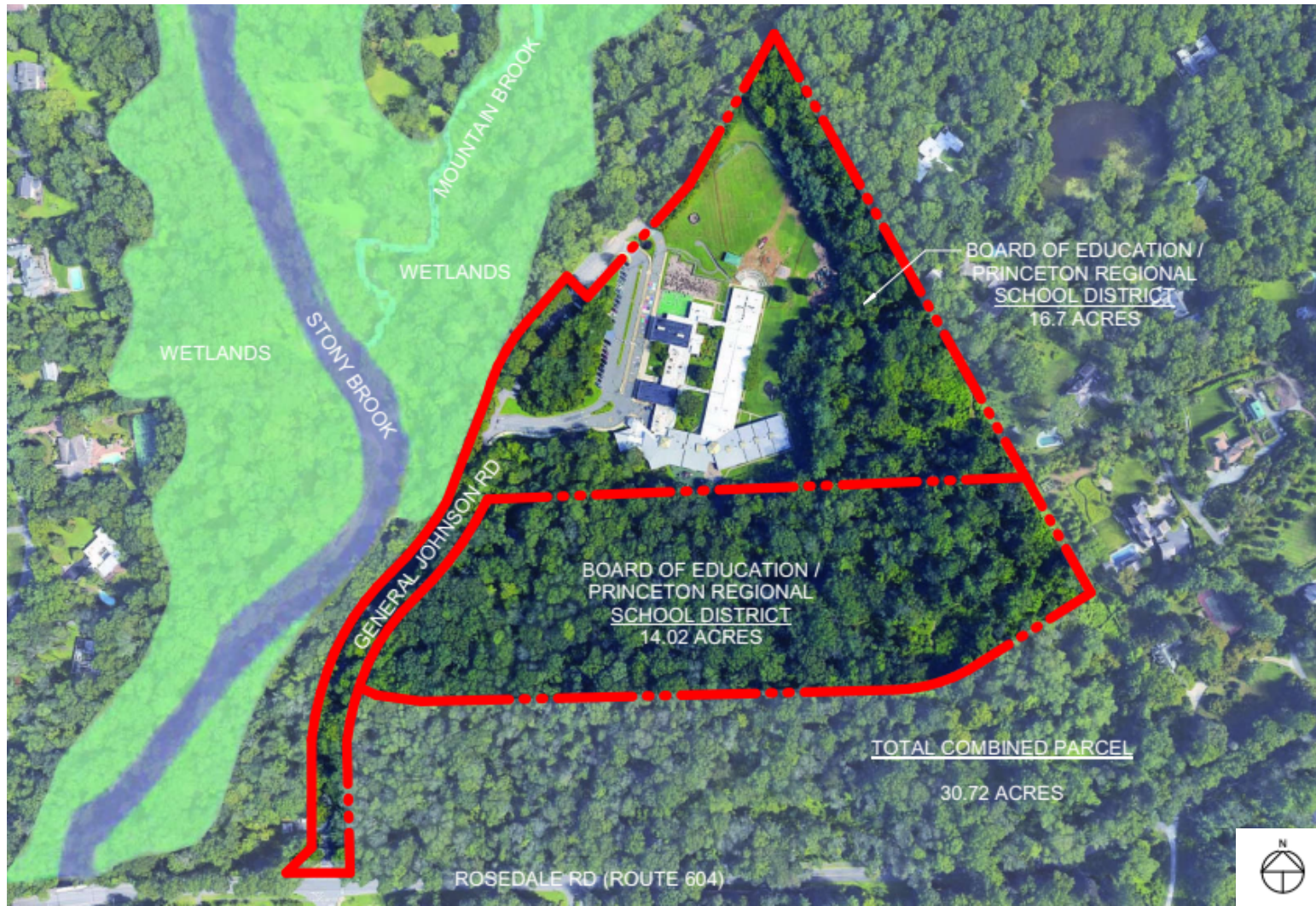
LEGEND

	GENERAL CLASSROOM		SPECIALIZED INST / EXPL
	SCIENCE		LARGE GROUP / NON-SCHEDULED
	SCSE		ADMIN
	ACAD SUPPORT		PE / HEALTH

PRINCETON – JOHNSON PARK ES



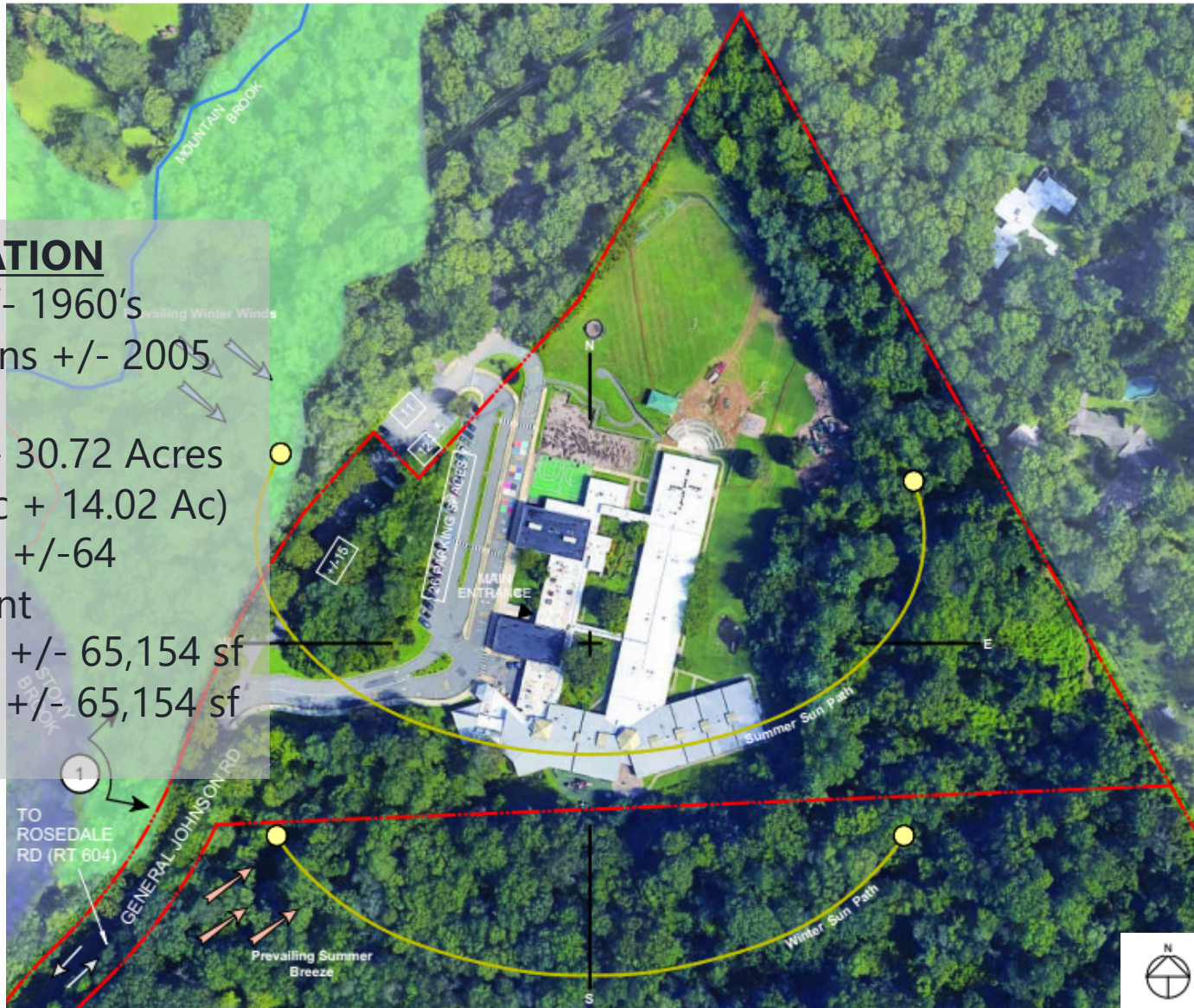
PRINCETON – JOHNSON PARK ES



PRINCETON – JOHNSON PARK ES

INFORMATION

- Built +/- 1960's
- Additions +/- 2005
- 1 Story
- Site +/- 30.72 Acres (16.7 Ac + 14.02 Ac)
- Parking +/- 64
- Footprint Size +/- 65,154 sf
- Bldg Sf +/- 65,154 sf



JOHNSON PARK ES – FACILITY COMMENTS

STRENGTHS:

- Facility / Use
- Building Responds to Sloped Site
- Music / Art Program Space
- Site Amphitheater / Amenity

DEFICIENCIES:

- Hidden Entrance
- Taxed Core Spaces (Gym, Cafetorium, Kitchen)
- Collaboration & Flexible Space (Teacher & Student)
- Space for Inclusion
- Sustainability - Energy Upgrades
- Infrastructure Upgrades (Utility Services / Toilets)
- Sloping Grade in Courtyards
- Parking Shortage / Parking @ Main Circulation Road (Safety)

JOHNSON PARK ES – FACILITY COMMENTS

OPPORTUNITIES - BLDG

- Adaptive Reuse of Space
- Core Space Expansion
- Support for Specialized Programs
- Provide Collaborative/Flexible Space (Students & Staff)
- Pride & Image of School
- Sustainability / Energy Efficiency

OPPORTUNITIES - SITE

- Site Areas Available to Expand
- Respect Site Features
- Improve Parking & Circulation

JOHNSON PARK ES - CAPACITY



First Floor

LEGEND

	GENERAL CLASSROOM		SPECIALIZED INST / EXPL
	SCIENCE		LARGE GROUP / NON-SCHEDULED
	SCSE		ADMIN
	RESOURCE		PE / HEALTH
	ACAD SUPPORT		

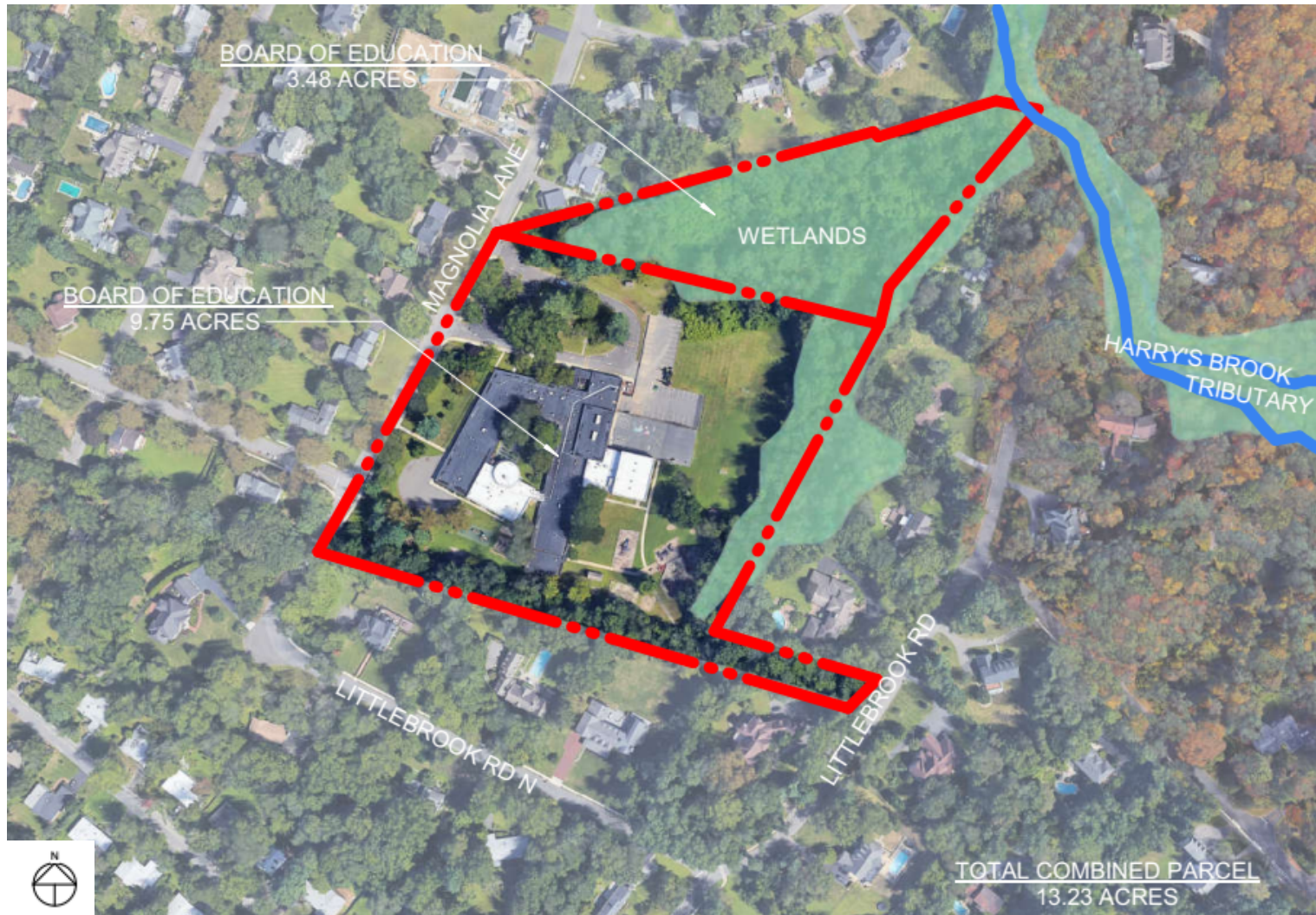
Existing Room Inventory (School Model) Report

JP	Spiezle (.90)	MMI/ PS&S (.90)
SCSE	4	3
Enroll 2019-20 (PK-5)	352	352
Seat Deficit/ Surplus	42	18

PRINCETON – LITTLEBROOK ES



PRINCETON – LITTLEBROOK ES



PRINCETON – LITTLEBROOK ES



INFORMATION

- Built +/- 1950's
- Additions +/- 2005
- 1 Story
- Site +/- 13.23 Acres
(3.48 Ac + 9.75 Ac)
- Parking +/- 57
- Footprint
Size +/- 56,912 sf
- Bldg Sf +/- 56,912 sf (*)
(*) Excludes Part. Basement

LITTLEBROOK ES – FACILITY COMMENTS

STRENGTHS:

- Facility Use
- Music / Art Program Space
- Main Lobby / Community Space
- Parking Lot Separate From Veh. Circ. Path

DEFICIENCIES:

- Hidden Entrance
- Taxed Core Spaces (Gym, Cafetorium, Kitchen)
- Collaboration & Flexible Space (Teacher & Student)
- Space for Inclusion
- Ext. DH Windows & T-111 Wood Siding Repairs Required
- Sustainable - Energy Upgrades / Lighting / PV etc...
- Infrastructure Upgrades (Utility Services / Toilets)
- Parking Shortage

LITTLEBROOK ES – FACILITY COMMENTS

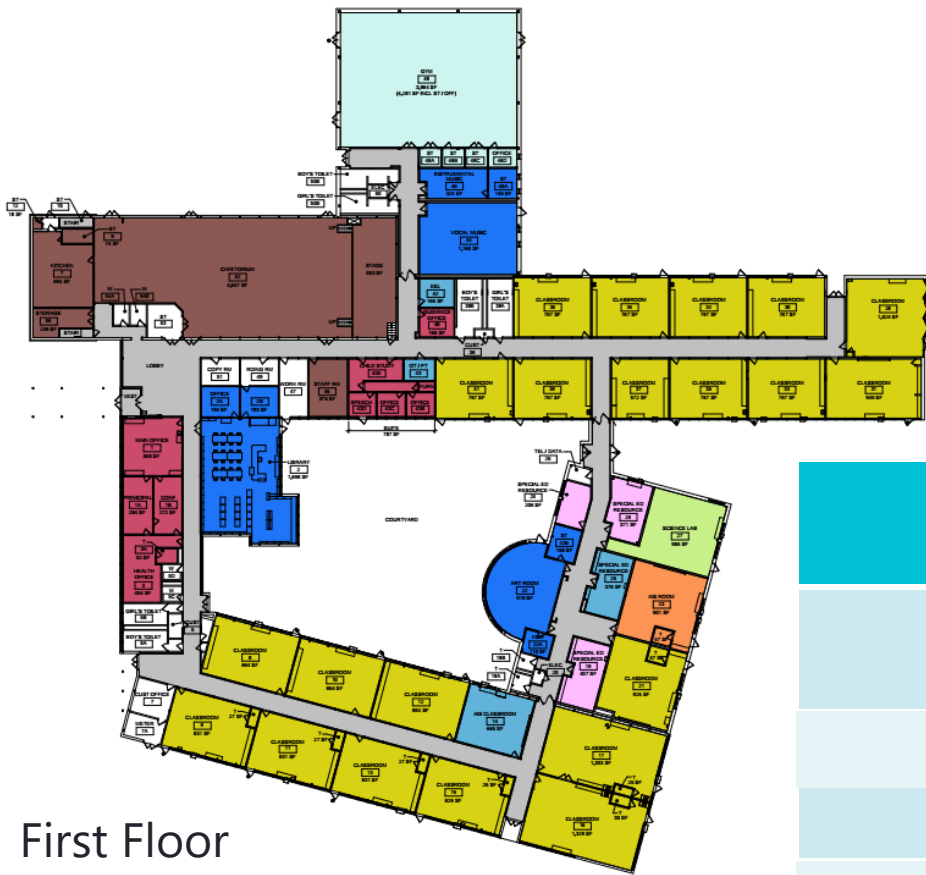
OPPORTUNITIES - BLDG

- Adaptive Reuse of Space
- Core Space Expansion
- Support for Specialized Programs
- Provide Collaboration & Flexible Space (Students & Staff)
- Pride & Image of School
- Sustainability / Energy Efficiency

OPPORTUNITIES - SITE


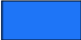







- Site Areas Available to Expand
- Respect Site Features
- Improve Parking & Circulation

LITTLEBROOK ES - CAPACITY



First Floor

LEGEND

	GENERAL CLASSROOM		SPECIALIZED INST / EXPL
	SCIENCE		LARGE GROUP / NON-SCHEDULED
	SCSE		ADMIN
	RESOURCE		PE / HEALTH
	ACAD SUPPORT		

Existing Room Inventory (School Model) Report

LB	Spiezle (.90)	MMI/ PS&S (.90)
SCSE	0	1
Enroll 2019-20 (PK-5)	404	404
(*) Includes One Undersized Classroom		

PRINCETON – RIVERSIDE ES



PRINCETON – RIVERSIDE ES



INFORMATION

- Built +/- Late 1950's
- Additions +/- 2005
- 1 Story
- Site +/- 10.86 Acres
- Parking +/- 51
- Footprint
Size +/- 60,541 sf
- Bldg Sf +/- 60,541 sf

RIVERSIDE ES – FACILITY COMMENTS

STRENGTHS:

- Facility / Use
- Parking & Bus Loop are Separated
- Entrance Canopy
- Music / Art Programs
- Black Box in CR
- Inclusion & Enrichment Programs
- Garden Space On Site - Needs Staging

DEFICIENCIES:

- Hidden Entrance
- Taxed Core Spaces (Gym, Cafetorium, Kitchen)
- Collaboration & Flexible Space (Teacher & Student)
- Restricted Internal Circulation Pattern / Entry
- Space for Inclusion
- Ext. DH Windows & T-111 Wood Siding Repairs Required
- Sustainable - Energy Upgrades / Lighting / PV etc...
- Infrastructure Upgrades (Utility Services / Toilets)
- Parking Shortage

RIVERSIDE ES – FACILITY COMMENTS

OPPORTUNITIES - BLDG

- Adaptive Reuse of Space
- Core Space Expansion
- Support for Specialized Programs
- Provide Collaboration & Flexible Space (Students & Staff)
- Pride & Image of School
- Sustainability / Energy Efficiency

OPPORTUNITIES - SITE



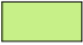



- Site Areas Available to Expand
- Respect Site Features
- Improve Parking & Circulation

RIVERSIDE ES - CAPACITY



First Floor

LEGEND

	GENERAL CLASSROOM		SPECIALIZED INST / EXPL
	SCIENCE		LARGE GROUP / NON-SCHEDULED
	SCSE		ADMIN
	RESOURCE		PE / HEALTH
	ACAD SUPPORT		

Existing Room Inventory (School Model) Report

RS	Spiezle (.90)	MMI/ PS&S (.90)
CR Count	15	16
SCSE	4	5
Ed Capacity	306	336
Enroll 2019-20 (PK-5)	309	309
Seat Deficit/ Surplus	-3	27

ELEMENTARY SCHOOL PROGRAM

ASSETS:

- Small Neighborhood Schools
- School-wide Enrichment
- DLI Program
- Strong Music & Arts
- Special Ed Inclusion
- High Performing District
- Innovation Goal

CHALLENGES:

- Grade Level Break-Points
 - Scheduling “Focus 30” with Other Priorities
 - DLI Scheduling, Enrollment Issues;
 - Adequately Sized Classrooms & Resource Rooms
 - Enrollment Pressure – Space Use
 - Need Flexible, Collaborative Space in Which to Innovate.
 - Create Space for Collaboration and Teamwork
 - Space for Inclusion
- “Building Appearance Should Reflect PPSD High Aspirations”

PRINCETON - JOHN WITHERSPOON MS



PRINCETON - JOHN WITHERSPOON MS



INFORMATION

- Built +/- 1960's
 - Additions +/- 2000's
 - 1 & 2 Story
 - Site +/- 13.14 Acres
 - Parking +/- 157
 - Footprint
 - Size +/- 119,673 sf
 - Building sf
 - 1st Flr: 119,673 sf
 - 2nd Flr: 49,980 sf
 - Total: 169,653 sf (*)
- (*) Excludes Part. Basement

JOHN WITHERSPOON MS – FACILITY COMMENTS

STRENGTHS:

- Community Facility Use
- Media Center (Flexible Space)
- Auditorium
- Aquatic Center
- Music Program
- Enriched Curriculum

DEFICIENCIES:

- House Concept vs. Building Design Restrictions (Pods)
- Internal Circulation Patterns
- Hidden Entrance
- Collaboration Space (Teacher & Student)
- Flexible / Exploratory Space
- Taxed Core Spaces (Gym, Cafetorium, Kitchen)
- Basement Levels / Pods & Main Bldg. / Limited Access
- Parking / Street Closed (MS&HS) for Pick Up & Drop Off Area
- Athletic Fields & Support Facilities
- Sustainability - Energy Use

JOHN WITHERSPOON MS – FACILITY COMMENTS

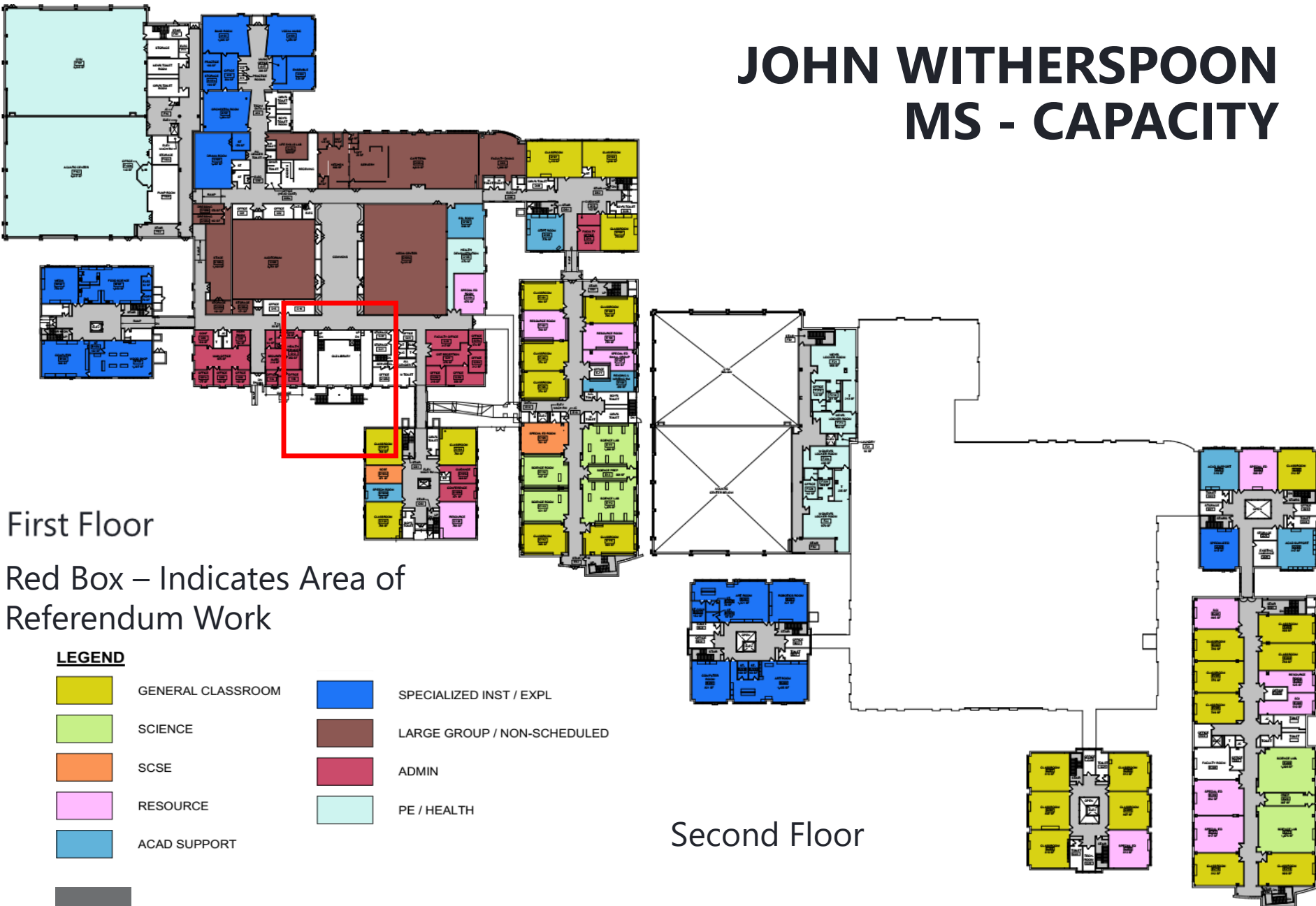
OPPORTUNITIES - BLDG

- Find or Create Space for Collaboration and Teaming
- Incremental House Growth
- DLI Integration
- PE Functions
- Support of Specialized Programs
- Core Space Expansion (Cafe & Kit)
- Converting Old Library to 2 CR & Collaboration Space / Maker Space, Robotics, Coding, Technology
- Pride & Image of School
- Sustainability / Energy Efficiency

OPPORTUNITIES - SITE

- Site Areas Available to Expand
- Respect Site Features
- Improve Parking & Circulation

JOHN WITHERSPOON MS - CAPACITY



JOHN WITHERSPOON MS - CAPACITY

CR Count (*)	24	469.2	25	488.7
SCIENCE	6	117.3	6	117.3
Other CR	6	0		
SCSE	4	40.8	2	20.4
SE Res	11	0	11	0
Support	0		6	0
Exploratory	6		9	0
Perf Arts	5		5	0
PE (Stations)	4		3	0
Health	1		1	0
Ed Capacity		627.3		626.4
Enroll 2019-20		778		778
Seat Deficit/ Surplus		-150.7		-151.6
Referendum Work(**)			4	81.6
Adj. Ed Capacity				708
Adj. Seat Deficit/ Surplus				-70

(*) Includes Computer Room Currently Unassigned

(**) Ref Renovation Work Est Occupancy Date Aug. 2020

MIDDLE SCHOOL PROGRAM

ASSETS:

- Strong House System
- Grade Level Guidance
- New Learning Commons
- Rich Exploratory Programs
- Robust Support Services
- Cultural Diversity

CHALLENGES:

- Pod Building Organization & Circulation;
- How Can House System Absorb New Students Incrementally?
- Admin Space in Pods;
- Gym Space Inadequate for PE and Sports (e.g. wrestling)
- “Music drives the curriculum?”
- Preserve/Expand Exploratory Course Options
- Support Spaces - right size & location
- Plan for Arrival of DLI Cohort
- Find or Create Space for Collaboration and Teamwork

PRINCETON - HIGH SCHOOL



PRINCETON - HIGH SCHOOL



INFORMATION

- Built +/- Early 1920's
- Additions +/- 1970's & 2000's
- Multi Level (5)
- Site +/- 21.5 Acres
- Parking +/-189
- Footprint Size +/-169,239 sf
- Building sf

Grd/Gym Lvl: 169,239 sf

1st Flr: 98,200 sf

2nd Flr: 76,105 sf

Total 343,544 sf (*)

(*) Excludes Part. Basement



PRINCETON HS – FACILITY COMMENTS

STRENGTHS:

- Prominent Entry – Original Building
- Facility / Use
- Consistent Room Sizes
- Performing Arts Center
- Black-Box Theatre
- PE - (2) Gyms & Fitness
- Learning – Media Center
- Enriched Curriculum

DEFICIENCIES:

- Design Restricts Efficient Use of Building
- Design vs. Teaching Method (Individual & Teaming)
- Collaboration & Flexible Spaces (T&S)
- Support of Specialized Programs (STEM/Makers Space, Robotics, STW)
- Taxed Core Spaces (Cafeteria & Kitchen)
- Departmental Offices in Trailers
- Parking and Vehicular Circulation
- Athletic Fields & Support Facilities
- Sustainability- Energy Use

PRINCETON HS – FACILITY COMMENTS

OPPORTUNITIES - BLDG

- Find or Create Space for Collaboration and Teamwork (Teachers & Students)
- Support of Specialized Programs
- Core Space Expansion (Café Sta.)
- Expanding 2nd Floor with Collaboration & CR Space
- Pride & Image of School
- Sustainability / Energy Efficiency

OPPORTUNITIES - SITE










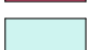
- Limited Site Area - Expand
- Respect Site Features – Fields Etc....
- Improve Parking & Circulation
- Courtyard Areas / Usage

PRINCETON HS - CAPACITY



Ground
& Gym Level

LEGEND

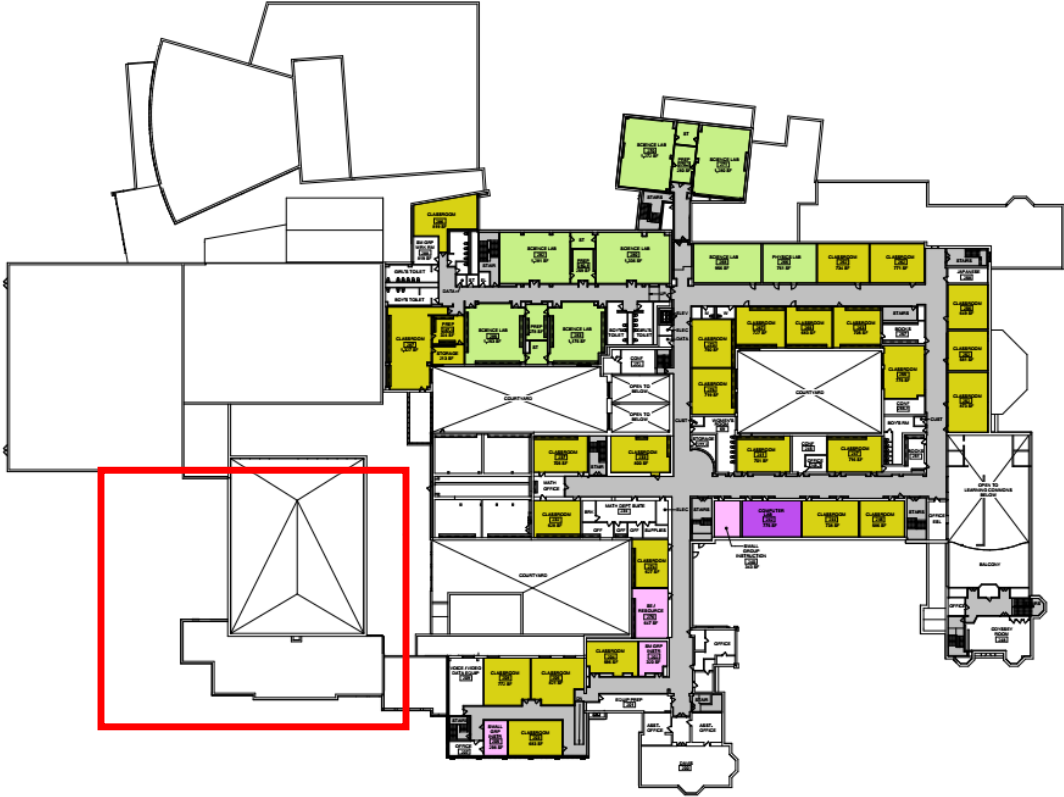
	GENERAL CLASSROOM		ACAD SUPPORT
	SCIENCE		SPECIALIZED INST / EXPL
	TECH CLASSROOM		LARGE GROUP / NON-SCHEDULED
	SCSE		ADMIN
	RESOURCE		PE / HEALTH

Red Box –
Indicates Area
of Referendum
Work





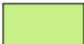







First Floor Level

PRINCETON HS - CAPACITY



Red Box –
Indicates Area of
Referendum
Work

LEGEND

	GENERAL CLASSROOM		ACAD SUPPORT
	SCIENCE		SPECIALIZED INST / EXPL
	TECH CLASSROOM		LARGE GROUP / NON-SCHEDULED
	SCSE		ADMIN
	RESOURCE		PE / HEALTH

PRINCETON HS- CAPACITY

Existing Room Inventory (School Model) Report							
	PHS			Spiezle (.75)		MMI/ PS&S (.75)	
Rooms	Flr 0	Flr 1	Flr 2	Rms	Capacity	Rms	Capacity
CR		21	24	41	769	45	844
SCI		6	8	16	300	14	263
Tech	2	1	1	8	150	4	75
Visual Arts	2	3		3	56	5	94
Perf Arts	3	1		2	38	4	75
PE	5	0		3	56	5	94
Health	2	1		3	56	3	56
SG/SE Res	1	3	3	10	0	8	72
Support		1				1	0
Aud	1			1	0	1	0
Lib		1		1	0	1	0
Caf	1			1	0	1	0
Ed Capacity					1425		1553
Enroll 2019-20					1590		1590
Seat Deficit / Surplus					-165		-37
Current Ref. Work							112
Adj. Ed Capacity							1665
Adj. Seat Deficit/ Surplus							75

PHS PROGRAM

ASSETS:

- Strong Departmental System
- Rich, Diverse Curriculum
- Seamless Inclusion
- Motivated Students
- Technology Enthusiasm
- SE Retention
- Innovation
- History and Tradition

CHALLENGES:

- Faculty Offices
- Scheduling Pressure – “Utilization”
- More Study Options, Library
- More Tech-Enriched Spaces
- Science Labs
- Right Sized SCSE Spaces
- Makers’ Spaces
- Interpretable Spaces
- Find or Create Space for Collaboration and Teamwork

PRINCETON ES- CORE SPACE REVIEW

ELEMENTARY SCHOOL - CORE SPACE EVALUATION

School	Gym/Storage (SF)	Cafetorium (SF)	Kitchen (SF)	Stage (SF)	Total Allowance (SF)
FES - Allowance	4250	4000	1,250	1,000	10,500
CP - Actual	3,841	2,500	776	1,179	8,296
Difference	(409)	(1,500)	(474)	179	(2,204)
JP - Actual	4,392	2,244	849	517	8,002
Difference	142	(1,756)	(401)	(483)	(2,498)
LB - Actual	4,281	4,647	786	853	10,567
Difference	31	647	(464)	(147)	67
RS - Actual	4,186	2,487	606	405	7,684
Difference	(64)	(1,513)	(644)	(595)	(2,816)

PRINCETON MS - CORE SPACE REVIEW

MIDDLE SCHOOL - CORE SPACE EVALUATION

School	Gym & Sto & Lk Rms (SF)		Cafeteria (SF)		Kitchen (SF)	Stage (SF)	Total Allowance (SF)
FES - Allowance	9900		5600		1,500	1,000	18,000
JWMS - Actual	13,090	(1)	4,028	(2)	1,009	1,299	19,418
Difference	3,190		(1,577)		(491)	299	1,418

(1) Gym Lk Rms are shared with Aquatic Center

(2) Cafe includes Servery approx. 769sf & Cafe excludes adjacent Faculty Dining 1,099sf

PRINCETON HS - CORE SPACE REVIEW

HIGH SCHOOL - CORE SPACE EVALUATION

School	Gym/Storage /Locker Rms (SF)		Cafeteria (SF)		Kitchen (SF)		Assembly & Stage (SF)	Total Allowance (SF)
FES - Allowance	21,100		5300		2,700		6,300	35,400
PHS - Actual	36170	(1)	8,184	(2)	1,969	(3)	9,076	55393
Difference	15070		2,884		(731)		2,776	19993

(1) Gym (Old+New) + Fitness Ctr + Lk Rms

(2) Cafe includes Servery on Café Floor approx. 957sf

(3) Kit + Dish Area

ELEMENTARY SCHOOL

MASTER SCHEDULE

[illegible]

Fifth Grade - Mr. Butler																			
Mon.	MM 15	Math 60			Library			Focus 30	LA/SS/SC 55	Recess	Lunch	LA 30	Spanish	LA 55					
Tue.	MM 15	Math 60		Phys. Ed				Focus 30	Science Lab	Recess	Lunch	Spanish	LA 80						
Wed.	MM 15	Math 60		Health (Knox)	Spanish			Focus 30	LA/SS/SC 55	Recess	Lunch	LA 105							
Thu.	MM 15	Math 60		Music				Focus 30	LA/SS/SC 55	Recess	Lunch	LA 105							
Fri.	MM 15	Math 60		Art				Focus 30	LA/SS/SC 55	Recess	Lunch	LA 85	5th Grade Chorus						

JWMS SCHEDULE

J.W. SCHOOL SCHEDULE 2019 - 2020

6th Grade	7th Grade	8th Grade
8:30 HOMEROOM	HOMEROOM	HOMEROOM
8:35 House and WL Classes	8:35 House and WL Classes	8:35 EP/PE/WS/Music
9:25 EP/PE/WS/Music	9:25 House and WL Classes	9:25 House and WL Classes
10:15 House and WL Classes	10:15 EP/PE/WS/Music	10:15 House and WL Classes
11:05 LUNCH	11:05 House and WL Classes	11:05 House and WL Classes
11:35 House and WL Classes	11:55 House and WL Classes	11:55 LUNCH
12:25 House and WL Classes	12:45 LUNCH	12:25 EP/PE/WS/Music
1:15 EP/PE/WS/Music	1:15 House and WL Classes	1:15 House and WL Classes
2:05 House and WL Classes	2:05 EP/PE/WS/Music	2:05 House and WL Classes
2:55	2:55	2:55

House Classes:

- Math
- Science
- Social Studies
- English

World Language:

- Spanish
- French

PE/Health

Workshop:

- Literary Advantage
- English Excel

Exploratory:

- Art
- Computers
- Design/Engineering
- Drama
- Food Science
- Coding/Digital Art
- Robotics
- SORCE, SERVE & SPEAR

PRINCETON HIGH SCHOOL

PHS BELL SCHEDULE

A	B	C	D	E	F
44 MINUTE PERIODS	44 MINUTE PERIODS	44 MINUTE PERIODS	44 MINUTE PERIODS	77 MINUTE PERIODS	77 MINUTE PERIODS
PERIOD 1 8:20-9:04	PERIOD 2 8:20-9:04	PERIOD 3 8:20-9:04	PERIOD 4 8:20-9:04	PERIOD 3 8:20-9:37	PERIOD 4 8:20-9:37
PERIOD 2 & PLEDGE 9:08-9:53	PERIOD 3 & PLEDGE 9:08-9:53	PERIOD 4 & PLEDGE 9:08-9:53	PERIOD 1 & PLEDGE 9:08-9:53		
MORNING BREAK & ANNOUNCEMENTS 9:53-9:59	MORNING BREAK & ANNOUNCEMENTS 9:53-9:59	MORNING BREAK & ANNOUNCEMENTS 9:53-9:59	MORNING BREAK & ANNOUNCEMENTS 9:53-9:59	PERIOD 1 9:47-11:04	PERIOD 2 9:47-11:04
PERIOD 3 10:03-10:47	PERIOD 4 10:03-10:47	PERIOD 1 10:03-10:47	PERIOD 2 10:03-10:47		
PERIOD 4 10:51-11:35	PERIOD 1 10:51-11:35	PERIOD 2 10:51-11:35	PERIOD 3 10:51-11:35	LUNCH BREAK (40 minutes) 11:04-11:44	LUNCH BREAK (40 minutes) 11:04-11:44
PERIOD 5 11:39-12:23	PERIOD 6 11:39-12:23	PERIOD 7 11:39-12:23	PERIOD 8 11:39-12:23		
LUNCH BREAK (34 minutes) 12:23-12:57	LUNCH BREAK (34 minutes) 12:23-12:57	LUNCH BREAK (34 minutes) 12:23-12:57	LUNCH BREAK (34 minutes) 12:23-12:57	PERIOD 7 11:48-1:05	PERIOD 8 11:48-1:05
PERIOD 6 1:01-1:45	PERIOD 7 1:01-1:45	PERIOD 8 1:01-1:45	PERIOD 5 1:01-1:45		
PERIOD 7 1:49-2:33	PERIOD 8 1:49-2:33	PERIOD 5 1:49-2:33	PERIOD 6 1:49-2:33	PERIOD 5 1:15-2:32	PERIOD 6 1:15-2:32
PERIOD 8 2:37-3:21	PERIOD 5 2:37-3:21	PERIOD 6 2:37-3:21	PERIOD 7 2:37-3:21		
				TIGER TIME 2:37-3:21	PEER GROUP/ COMM SVC 2:37-3:21

PRINCETON - VALLEY ROAD



PRINCETON - VALLEY ROAD



INFORMATION

- Built +/- Early 1920's & 1950's
- 1 & 2 Story
- Site +/- 8.9 Acres
- Parking
- Cars +/- 85
- Small Bus +/- 10
- Large Bus +/- 7
- Footprint Size +/- 39,467 sf

VALLEY ROAD – FACILITY COMMENTS

STRENGTHS

- Used as BOE Offices / Maintenance

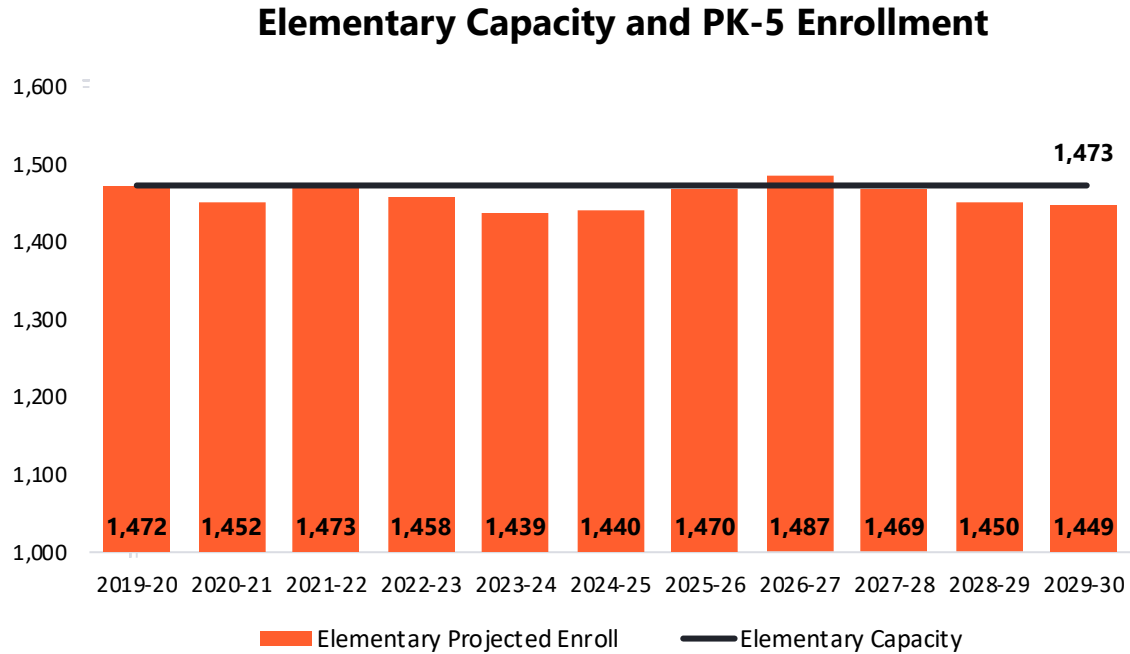
DEFICIENCIES

- Parking Shortage
- Original Building Section Not Used

OPPORTUNITIES

- Site Area Available for School Needs
 - Athletic Field Upgrades

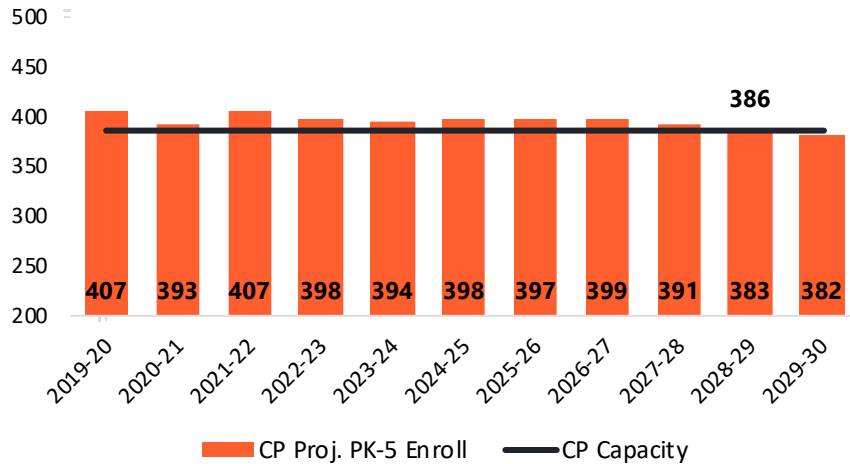
ELEMENTARY PROJECTED UTILIZATION



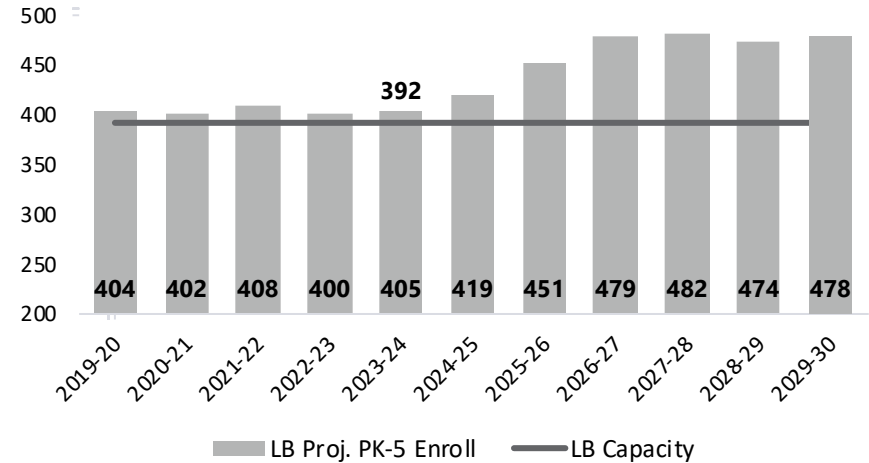
Assumes 45 of projected 100 PK students will be located outside of the four elementary schools beginning in 2020-21.

ELEMENTARY PROJECTED UTILIZATION

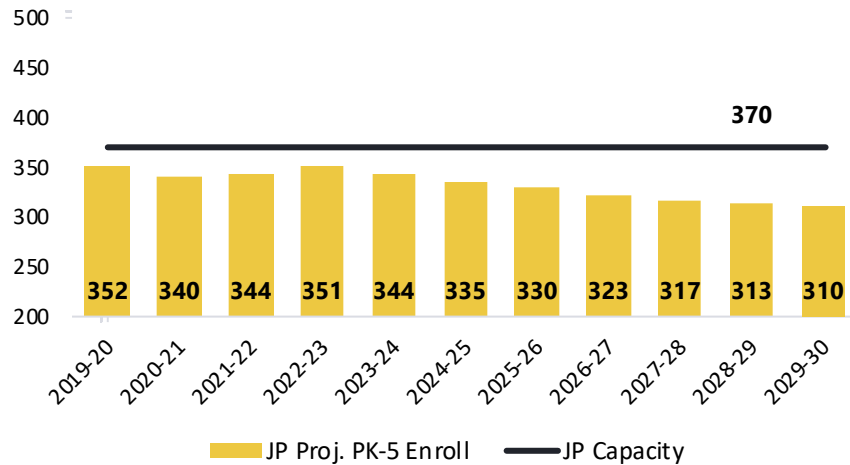
Community Park



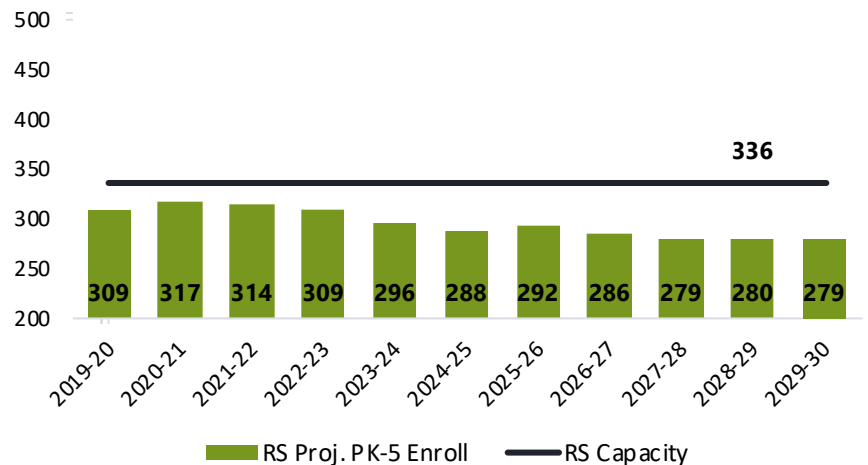
Littlebrook



Johnson Park



Riverside



Assumes 9 PK located at CP, 21-24 at JP, 9 at LB, 13-15 at RS, and up to 45 off-site beginning in 2020-21

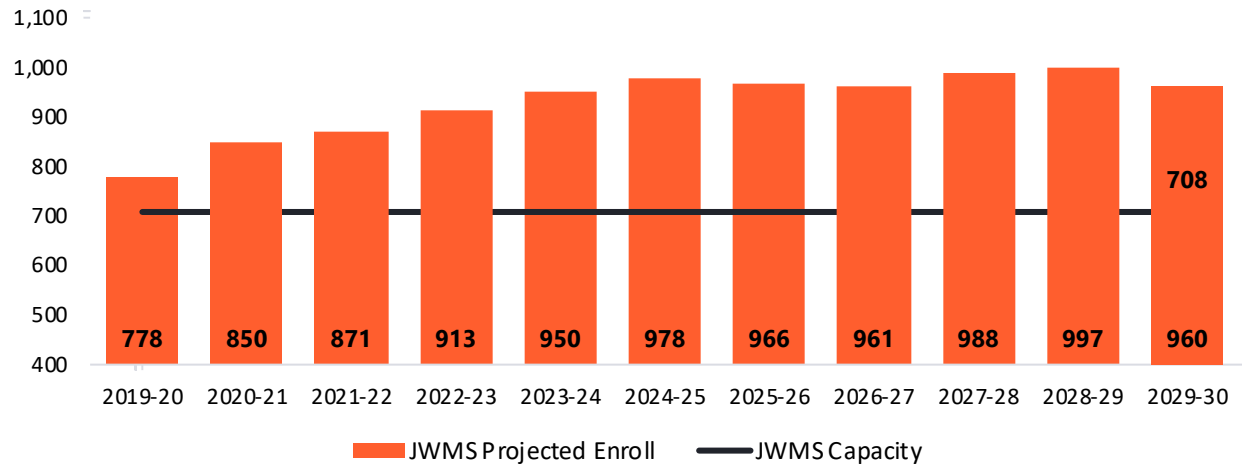
MS & HS PROJECTED UTILIZATION

**Capacities
adjusted to
reflect
current
referendum
work**

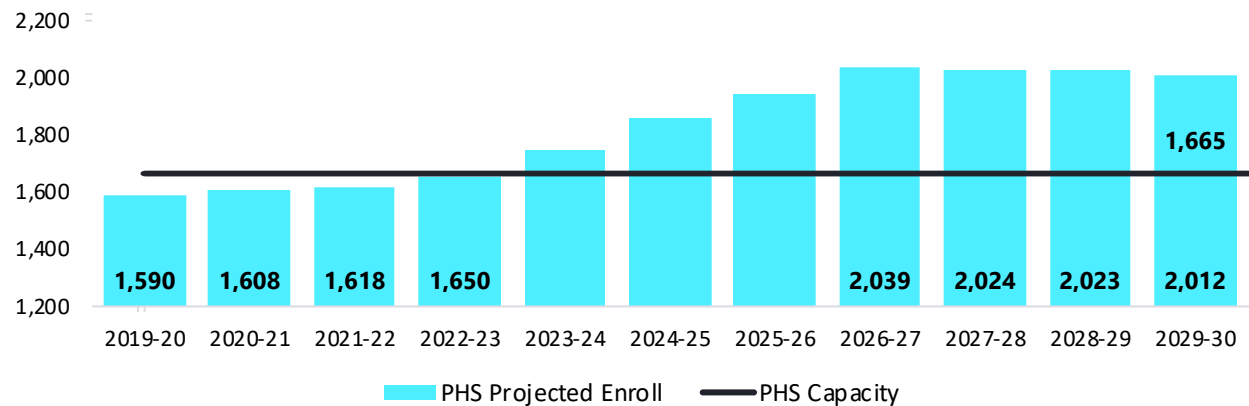
Middle school full
capacity expected
for 2020-21

High school full
capacity expected
for 2021-22

Witherspoon Middle



Princeton High School



EDUCATION

ES PROGRAM – COMMON THEMES

BUILDING

- CR Qty / Dist. Align Enrollment
- Core Space (Gym, Cafe, Kitchen)
- Collaboration & Flexible Space (Teacher & Students)
- Find or Create Space for Collaboration and Teamwork
- Support Special Programs
- Pre-K & PreK/SE - Offer @ Each ES or One Site
- DLI / Impacts
- Enrichment / G&T Program (AIS, Speech, OT, and ESL)
- Sustainability - Energy Use
- Infrastructure Upgrades (Utility Services / Toilets)
- Image / Pride

SITE

- Parking Shortage
- Separate Circulation (Bus vs. Cars) - Safety
- Site Areas Available to Expand
- Respect Site Features

MS PROGRAM – COMMON THEMES

BUILDING

- House Use vs Existing Bldg. Design (Pods)
- Core Space Needs (Cafeteria, Kit)
- Additional PE Station(s) / Aux Gym
- Find or Create Space for Collaboration & Teamwork(T&S)
- Special Programs
 - DLI / Impacts
 - SE
 - Enrichment / G&T Program (AIS, Speech, OT, and ESL)
 - STEM Coding & Digital Art, STEM Robotics, & Source
- Sustainability - Energy / Lighting / PV...
- Infrastructure Upgrades (Utility Services)
- Image / Pride

SITE

- Parking Shortage
- Separate Circulation (Bus vs. Cars) - Safety
- Site Areas Available to Expand
- Respect Site Features

PHS PROGRAM – COMMON THEMES

BUILDING

- HS Design vs. Teaching Methodology
- Individual & Team-Based Learning vs. Departments
- Admin Spaces in Trailers
- Collaboration & Flexible Space (T&S)
- Support Specialized Programs
 - STEM, Robotics, School to Work Programs, Coding
 - Promote Project Based Learning
- Core Spaces (Cafeteria, Kitchen)
- Sustainability - Energy / Lighting / PV...
- Infrastructure Upgrades (Utility Services)
- Image / Pride

SITE

- Parking Shortage
- Separate Circulation (Bus vs. Cars) - Safety
- Site Areas Available to Expand
- Respect Site Features
- Athletic Fields & Support Facilities