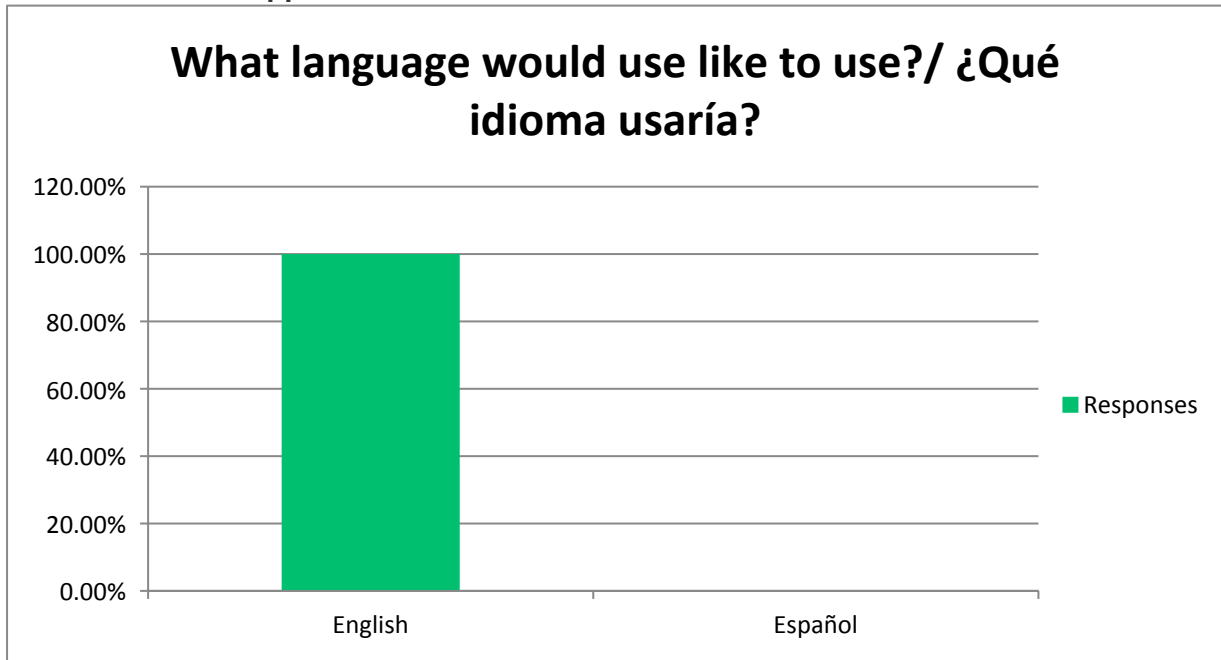


Princeton Public Schools Master Planning Process - Digital Workshop

What language would use like to use?/ ¿Qué idioma usaría?

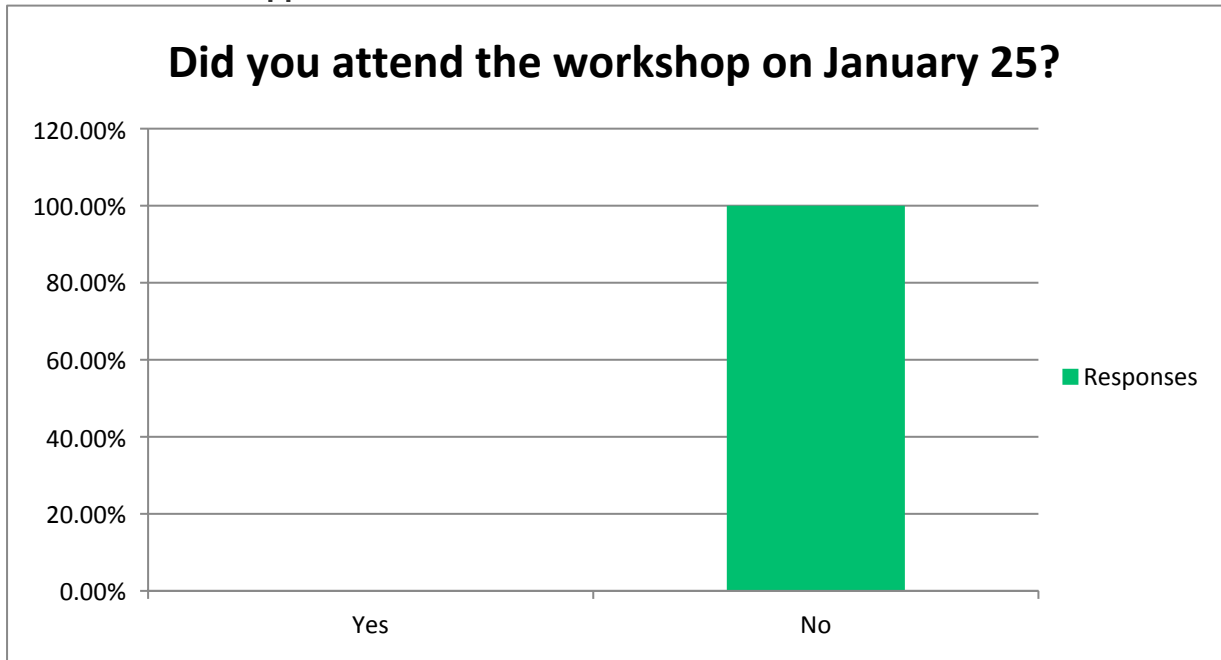
Answer Choices	Responses	
English	100.00%	289
Español	0.00%	0
	Answered	289
	Skipped	202



Princeton Public Schools Master Planning Process - Digital Workshop

Did you attend the workshop on January 25?

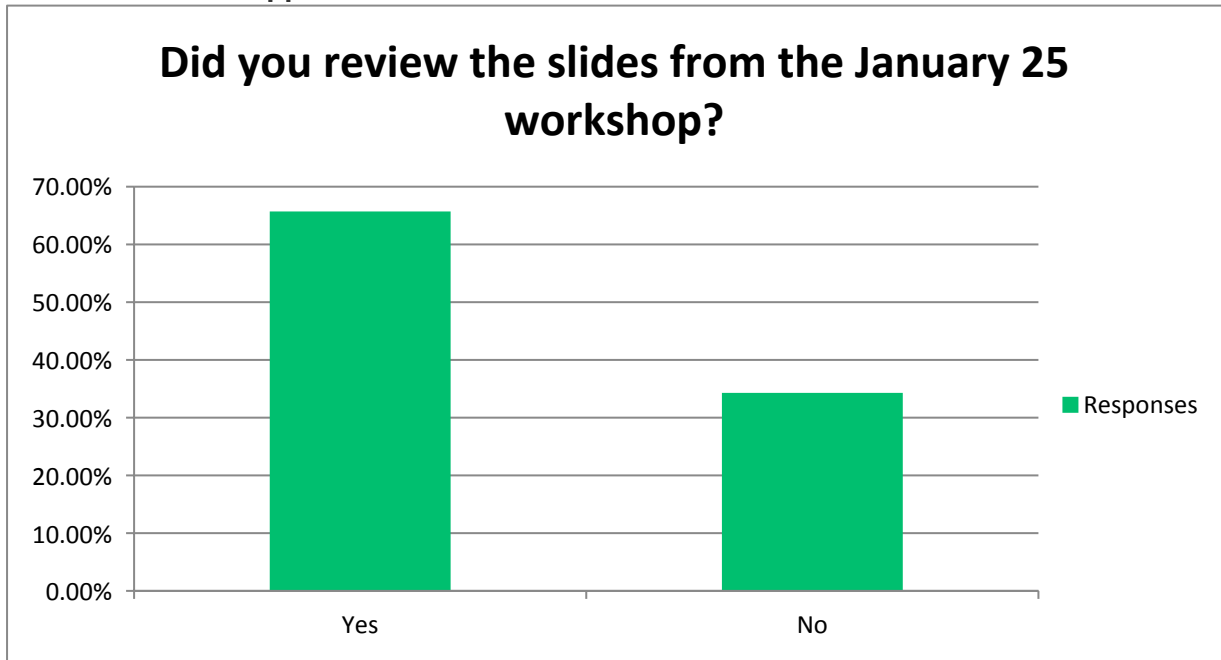
Answer Choices	Responses	
Yes	0.00%	0
No	100.00%	491
Answered		491
Skipped		0



Princeton Public Schools Master Planning Process - Digital Workshop

Did you review the slides from the January 25 workshop?

Answer Choices	Responses	
Yes	65.71%	320
No	34.29%	167
Answered		487
Skipped		4

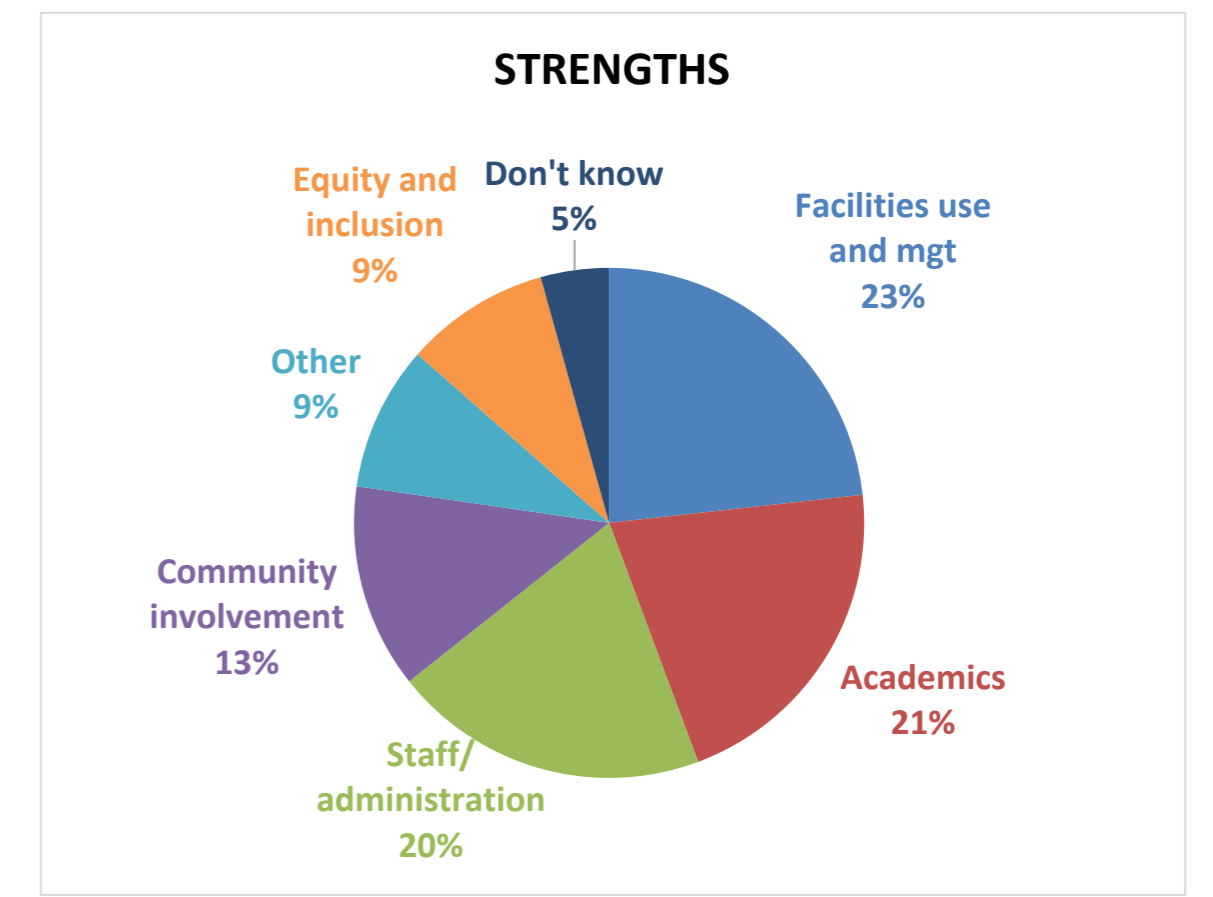


Princeton Public Schools Master Planning Process - Digital Workshop

What are PPS's strengths? What has PPS done well given recent increasing enrollments?

Respondents	Responses	Tag 1	Tag 2	Tag 3	Positive DLI Mention
1	Academic rigor, Community, Desire to focus on wellness, desire to address equity. The district has done well continuing strong academic instruction in the midst of increased enrollment	Academics	Equity and inclusion		
2	not sure.	Don't Know			
3	Residents and parents are deeply involved in the school district planning. A well-recognized high performing district among neighboring townships.	Academics	Community involvement		
4	Commitment to high quality education for all students. Working to put forward true inclusive education. Attention to counseling concerns of all students	Academics	Equity and inclusion		
5	Community Park: good teachers, unique DLI program; relatively small classes; after school music enrichment for all students	Academics			1
6	I think PPS has managed the enrollments reasonably well, given staffing constraints.	Facilities use and mgt			
7	Talking about the issues	Community involvement			
8	It has let the public know about future concerns.	Community involvement			
9	Institutional expertise.	Staff/ administration			
10	PPS is trying the best they can to put maintain what we have	Facilities use and mgt			
11	Not sure	Don't Know			
12	Reputation	Academics			
13	PPS has continued to be dedicated to diversity and inclusion and keeping student to teacher ratio low. PPS has a commitment to the inclusion of special education students in general education setting.	Equity and inclusion			
14	PPS is utilizing space for teaching that wasn't originally designed for that use, multi-purposing rooms.	Facilities use and mgt			
15	I appreciate the recent efforts to communicate clearly with the community about enrollment projections.	Community involvement			
16	DLI, more affordable housing	Academics			1
17	HS academics	Academics			
18	They have some very good teachers. They benefit from a based population that is overly educated. I suppose they have tried to work well with the limited funding and space they have as best they can. That's something.	Academics	Facilities use and mgt		
19	I don't know.	Don't Know			
20	Good foundations of PPS has absorbed the increasing enrollments.	Facilities use and mgt			
21	Commitment to try and give all students an opportunity to thrive (regardless of ability or parental resources).	Equity and inclusion			
22	Absorbing additional intake by being flexible and accommodating.	Facilities use and mgt			
23	The staff. The teachers and building administrators have worked to deal with the increasing population.	Staff/ administration			
24	Dealing with the lack of resources and still making school meaningful.	Staff/ administration			
25	Excellent school district, reputable teachers and well recognized schools	Academics	Staff/ administration		
26	Managed student experience well.	Other			
27	The analysis of the growth and projected growth was enlightening. Adapting classrooms to add more teachers to keep class sizes small is commendable.	Facilities use and mgt			
28	The arts programs	Academics			
29	Strengths: excellent art instructor at RS. Some of the younger teachers are amazing.	Staff/ administration			
30	Dual language program, teachers	Academics	Staff/ administration		1
31	Awareness that the Mt. Laurel settlement housing development plan will lead to enrollment growth beyond what the school district can currently handle.	Other			
32	hired new teachers in elementary school	Staff/ administration			
33	They're trying to make the best of an increasingly bad situation but it's not enough. My kids are at Littlebrook and JW and both are over-capacity. It's ridiculous	Other			
34	High quality intake and massive funding (on a per-pupil and gross basis). Given that it should easily be able to handle increased enrollements	Other			
35	The referendum was a start, but was inadequate. The reputation of the Princeton school district will be eroded as class sizes become too big and the learning environment becomes outdated and inadequate.	Other			
36	It has initiated this planning process!	Community involvement			
37	Diversity. Good teachers. I am not sure about what has been done with increasing enrollment.	Equity and inclusion	Staff/ administration		
38	PPS is acknowledging the problem and trying to focus attention on it.	Staff/ administration			
39	DLI program	Academics			1
40	passed referendum last year	Facilities use and mgt			
41	inclusion, healthy atmosphere at school	Equity and inclusion			
42	it's unclear what has been done	Don't Know			
43	Bilingual program	Academics			1
44	Strong and caring teachers	Staff/ administration			
45	I don't know	Don't Know			
46	PPS has worked hard to minimize the adverse effects of overcrowding.	Staff/ administration			
47	Adding more classes per grade. Enabling DLI despite increased enrolment. Open up district for ULI students despite increased enrollment	Academics			1
48	DLI is providing children with a global perspective, increasing empathy and challenging them. The administration is doing a good job rethinking scheduling due to space shortages and constraints and doing what is best for all the kids in our community (preK, diversity and differentiation initiatives and the PTOs' great work to provide free supplies, field trips and subsidizing after school programs for those who need it).	Academics	Equity and inclusion	Staff/ administration	1
49	Offering DLI, offering free Pre-K for 2019-20 and beyond, encouragement of community involvement	Academics	Community involvement		1
50	adding extra classrooms for some larger grades	Facilities use and mgt			
51	Made do	Facilities use and mgt			
52	I don't know	Don't Know			
53	I think PPS has a good set of goals in both equity and student centered approaches to education.	Equity and inclusion			
54	Tradition of sound education. Openness to innovation. DLI. Strong and committed leadership that recognizes and leverages strong teaching staff. Very involved parents.	Academics	Staff/ administration	Community Involvement	1
55	communicate	Community involvement			
56	It's teachers, and being flexible to make adjustments every year	Staff/ administration			
57	I haven't seen the increasing enrollment issue as something that's being resolved. My children have an extremely large class size compared to other district schools!	Other			
58	DLI at community park is amazing, teacher quality is high	Academics			1
59	Academically strong, JW very positive and inclusive, Guidance Counselors responsive, many excellent, invested and loving teachers, college application prep strong, english department strong and helps kids improve skills	Academics			
60	Recognized the problem, accomadated the students, making plans for the future	Facilities use and mgt			
61	making children feel important	Staff/ administration	Academics		
62	Use all existing space; listen to stakeholder input about increasing class size	Facilities use and mgt	Community involvement		
63	It's great that PPS offers a Dual Language program—allowing families to opt into (or out of) the DLI regardless of their zone gives everyone access to the language resources they need. I am very happy to have my daughter in a DLI program	Academics			1
64	PPS has well analyzed the recent growth and the expected growth in the next 10 years showing the projections	Facilities use and mgt			
65	I don't know.	Don't Know			
66	THE ARTS HAVE EXCELLED, DESPITE THE NUMBER OF STUDENTS.	Facilities use and mgt			
67	Managing to enroll students and try their best to accommodate everyone	Facilities use and mgt			
68	Thinking about the issue somewhat in advance to allow for action	Facilities use and mgt			
69	Rightly abandoned plans to buy Thanet Road property.	Other			
70	The main strength of PPS is the large community of highly educated and motivated parents who prize their children's education. I am glad PPS has avoided overt conflict with teachers' union (to my knowledge). I am glad that PPS succeeded in convincing the town to pass a referendum for partial funds needed for renovation.	Community involvement			
71	A nurturing environment; inclusive outreach to the community; open, honest dialogue	Equity and inclusion			
72	PPS has made efforts to make the problem known and float monetary ideas such as the failed school referendum.	Facilities use and mgt			
73	More efficient use of space. Continued attention to individual students.	Facilities use and mgt	Staff/ administration		
74	Strengths are the sense of community, great teachers and staff, dedicated and engaged parents. PPS has kept class sizes reasonable at CP.	Facilities use and mgt	Equity and inclusion		
75	The overall quality of instruction, programs, and administration has not suffered due to increasing enrollments. This is most likely to the talented, dedicated teachers, administration, and staff that we are fortunate to have at PPS.	Academics	Staff/ administration		
76	CP class sizes are still nice and low. Good student attention and activities	Facilities use and mgt	Staff/ administration		
77	With a first grader at riverside, we feel lucky to have a small class size.	Other			
78	We have more classroom support.	Staff/ administration			
79	Engaging the community. Making planning for the future a priority.	Community involvement			
80	Consistently high academic performance	Academics			1
81	Has fostered some academic innovations including DLI	Academics			1
82	Dual language immersion program is a big strength.	Staff/ administration			
83	Racial equity plan is so good as to be a benchmark for other districts. "Every child known" policy is great.	Staff/ administration	Facilities use and mgt		
84	Teachers/principals/staff are dedicated and focused on the children, have responded well to over-enrollment and are doing the best they can with what they have	Staff/ administration	Facilities use and mgt		
85	I appreciate that admin has been focused on what is best for students and has not resorted to increasing class sizes beyond optimal levels to save money or space (for example, added a 4th class to a grade instead of having 3 classes with 30 kids in each class).	Facilities use and mgt	Equity and inclusion		
86	Arts education, particularly music.	Academics			
87	Class Sizes are kept relatively low	Facilities use and mgt			
88	PPS is very good at incorporating a diverse group of students. It provides a variety of opportunities and has consistently strong academics. Given recent enrollments PPS has had fairly consistent class sizes.	Equity and inclusion	Facilities use and mgt		
89	Great attention to student diversity and special needs.	Staff/ administration			
90	Flexibility of environment and teaching/interaction methods. Retained the quality of teachers.	Staff/ administration	Facilities use and mgt		
91	I appreciate the efforts to look ahead and plan for the future	Community involvement			
92	PPS seems to have maintained its great reputation as a draw for families to the area.	Academics			
93	maintain variety of class offerings at PHS	Academics			
94	Good reputation.	Other			
95	The community is our strength.	Community involvement			
96	Allow students access to a wide range of classes (in subject matter and difficulty) even if challenging to schedule.	Academics	Facilities use and mgt		
97	Not allow class sizes to be too large.	Other			
98	They own a lot of property. ABSOLUTELY NOTHING - and I am being generous.	Other			
99	Continued strong programs like dual language & ELL. There is a vast amount of advanced & AP classes-maybe more than necessary. PPS continues to try to improve the schedule and the overall wellness of PHS students	Academics			1
100	-Adapt				
101	-Make adjustments to instruction	Staff/ administration			
102	Maintained investment in school counselors, expanded means of connecting with each student as a person	Staff/ administration			
103	Great teachers; good course offerings for all students	Staff/ administration	Academics		
104	great variety of course selections at the high school. DLI at CP.	Academics			1
105	Strong diverse program offerings	Academics			
106	Haven't noticed increased enrollment.	Facilities use and mgt			
107	Great teachers and principal. Excellent enrichment opportunities.	Staff/ administration	Academics		
108	Flexible approach to doing the best with what is available	Staff/ administration			
109	We know what the problem is.	Facilities use and mgt			
110	diversity	Equity and inclusion			
111	Welcoming students who move into the district, and students from diverse cultural backgrounds	Equity and inclusion			
112	It seems like PPS is using the space that it has efficiently. At Littlebrook, they added an additional classroom for the 5th grade, which has kept class sizes down.	Facilities use and mgt			
113	The teachers work to overcome obstacles to efficient education.	Staff/ administration			
114	Caring, skilled educators. Active community. Hard-working students. Dealt with larger class sizes and utilized every available space.	Equity and inclusion	Facilities use and mgt		
115	doing best with what they have	Academics			
116	I am new to the district. Do not have enough information to form an opinion yet.	Don't Know			
117	Providing additional support staff and Special Education teachers.	Academics	Staff/ administration		
118	Making sure that each child has equal educational skills	Academics			
119	Teachers, Community Resources	Staff/ administration	Community involvement		
120	Good location...new housing options offered.	Other			
121	N/A	Other			
122	Every child known	Equity and inclusion	Staff/ administration		
123	1. Nothing	Other			
124	Continued focus on students as individuals, especially in elementary and MS classes. Even as class size grows, students are getting attention from their teachers.	Staff/ administration	Facilities use and mgt		
125	No crises	Other			
126	Strengths: Dedicated Board, Administration and Faculty. Reasonably docile voters/taxpayers.	Staff/ administration	Facilities use and mgt		
127	Done well: Started planning for future growth.	Staff/ administration			
128	Teachers are adapting classroom and instructional practices to suit larger class sizes. Students are rolling with the higher ratios. Teachers and students are accustomed to adapting less-than-perfect physical spaces to suit their needs.	Staff/ administration	Facilities use and mgt		
129	Build new classrooms and evaluate existing spaces	Facilities use and mgt			
130	Current referendum projects added some space at PHS. Comprehensive enrollment studies for planning. Information sharing to inform affordable housing planning process?? Not sure how much effect that had.	Community involvement	Facilities use and mgt		
131	Charter schools	Academics			
132	Taking feedback and implementing changes to facilities due to increased enrollment, to the best of their ability.	Community involvement	Facilities use and mgt		
133	Making sure there is fair zoning for the elementary schools.	Other			
134	teachers are great - teachers have worked hard at getting to know students and help each child learn	Staff/ administration			
135	I am glad we still have great resources and learning opportunities made available to students (technology, lab equipment, field trips, etc)	Academics			
136	PPS does not appear to have the sorts of behavioral problems that plague other school districts. The students appear happy and well-	Academics			
137	Opportunity for entire district to go to CP DLI program	Academics			1
138	This event - keep listening and explaining	Community involvement			
139	Giving tours of PHS to community (added by someone else) but not limited to the BOEs viewpoint - more open	Community involvement			
140	Communications, leadership and a start addressing community's concern [Affordability, equity and quality of education]. JS Sharma	Community involvement			
141	Excellent to start this process so that we don't run out of capacity & our facilities do not become an embarrassment to the community	Community involvement			
142	Need more community involvement so that the dialogue is not dominated by people who don't want to invest in our schools	Community involvement			
143	This process + data	Community involvement			
144	At elementary level, maintaining a sense of community and inclusion	Equity and inclusion			
145	Equity - trying to include everyone.	Equity and inclusion			
146	Projecting out the future and identifying pain points based on reality	Facilities use and mgt			
147	Nice/creative use of current space. Kids + teachers do well despite the facilities	Facilities use and mgt			
148	Making do with existing space	Facilities use and mgt			
149	Thinking outside the box + including the community	Facilities use and mgt	Community involvement		
150	The focus on data is a guide to decision making - appreciated today's presentation (added by someone else) but what data is missing?	Facilities use and mgt			
151	Great job with state \$ - prk expansion	Facilities use and mgt			
152	Thinking ahead + working with the community to take action as best you can.	Facilities use and mgt	Community involvement		
153	Good spirit with the district but the HS enrollment actually has gone down for the next year or two at least	Other			
154	PHS tours are great	Other			
155	Teachers + principals coping with the current situation + coming up with creative solutions to address the issue in the short-term.	Staff/ administration	Facilities use and mgt		

Tags	Count
Facilities use and mgt	43
Academics	39
Staff/ administration	37
Community involvement	24
Other	17
Equity and inclusion	17
Don't know	8



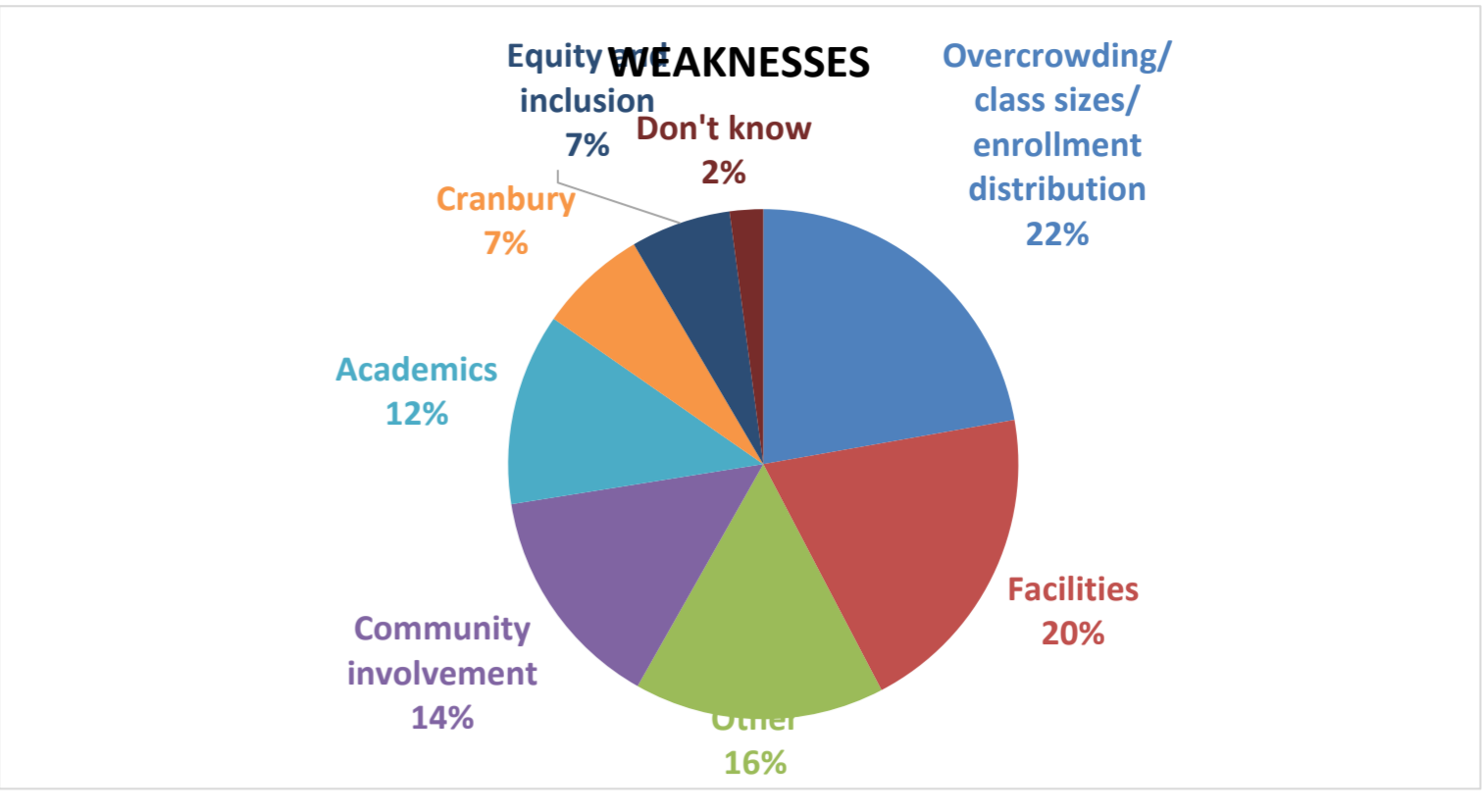
Princeton Public Schools Master Planning Process - Digital Workshop

What are PPS's weaknesses? What aspects of the District's response to enrollment growth could be improved upon?

Answered 133
Skipped 342

Tags	Count
Overcrowding/ class sizes/ enrollment	42
Facilities	38
Other	30
Community involvement	27
Academics	23
Cranbury	13
Equity and inclusion	12
Don't know	4

Respondents	Responses	Tag 1	Tag 2	Tag 3
1	1. Who's been doing anything about it? 2. Many are incorrect have been false/unworkable.	Other		
2	1. Too many kids in PHS halls 2. Too many kids in JW PHS classes 3. A student survey at PHS made a priority on converting large understanding sized assessments its smaller genuine ??? This is not in the referendum.	Overcrowding/ class size/ enrollment distribution		
3	4. Administration communication, facilities maintenance, having and sticking to long term goals and plans 5. Aging and crowded facilities due to recent high enrollment.	Other	Community involvement	
4	6. Although much attention has been given to equity and wellness, recent cuts in staff or staff/student ratio have really resulted in cuts in program. 7. Appears that growth was not accurately projected nor planned. Finances have to be addressed to be able to accommodate growth. 8. Avoid pushing a dream-like 5-6 school - allow true community input 9. Be clearer about implications of young enrollment on class size, common spaces, extracurricular activities - everything the town is proud of. 10. Be sensible with Cranbury. Why are we talking their students? If Princeton has to foot a bigger bill, Cranbury should be on the hook too. 11. The Supreme Tribunal seems obsessed with dreams/ideas instead of the practical work of fixing the schools. There is not enough focus on special ed. These are the jobs being cut - those serving the most vulnerable.	Facilities Academics Other	Community involvement	
5	12. Better advance planning - not reacting when the situation is acute! 13. Facial equity and achievement gaps and that needs for student success. Injury prevention center 14. Improve common spaces such as lunch room or outdoor areas. Some places such as the backdrop are not sufficient when the entire grade is using them. 15. Capacity of both facility and faculty cannot keep being stretched.	Other Facilities Facilities	Overcrowding/ class sizes/ enrollment distribution	Equity and inclusion
6	16. Children at CP do not feel included and valued. Careful reconsideration of current ES zoning. 17. Class size has increased drastically. 18. Class size is increasing; hallways too crowded; middle schoolers and high schoolers should NOT be riding buses together! 19. Class sizes at PHS are far too large and spaces are cramped. Lack of classroom space for teachers to have their own rooms (particularly for language teaching) is an impediment to teacher planning time and creation of classroom environments conducive to learning. The allocation of space and teaching staff serving English-learning Students with Limited and Interrupted Formal Education (SILIFE) is particularly insufficient at the moment. 20. Class sizes, need to either get teaching assistants at middle school level or more teachers. In teachers seem overwhelmed at times and are not always able to mark and return homework with comments, to complete class material on time, to present an organized syllabus across disciplines that make it simple to understand and what is expected. Also, maintaining facilities needs maintenance and a phenomenon: Windows AC units for classrooms, one night with all the other parents drives home what the kids complain about with overcrowding, overheating, etc. need more staff and maybe some mobile teaching buildings. It would look fancy but at least teachers and students could do their work without such distracting discomfort. 21. Communication and transparency - there seems to be a lot of distrust in the community and even among BOE members. 22. Lack of planning and rolling out new programs without considering whether we have resources to support them long-term. For example - making CP a DU only school when there isn't high demand for the program and serious question about equity (are students getting adequate science instruction, enrichment like other schools, are PHS being recommended?) and now expanding DU to JW where there are already problems with space and scheduling. 23. Communication and transparency. Schools needs to look to cost cutting measures aside from classroom learners. 24. Communication with staff as to what their needs are. They are the ones who deal with class size increase and budget constraints. They know the problem better than anyone! 25. Communication. Please keep things simple instead of over loading kids, teachers and administrators with initiatives, plans, programs, reports, assessments, bullet points and subheadings. 26. Community input (this forum is a good start) 27. Concise, timely and frequent communication 28. Consider not including Cranbury kids 29. Consider restricting teacher's kids living outside district added by someone else! Most teachers live 45-90 minutes outside districts. Having teachers children gives them "skin in the game" 30. Constant curriculum changes are not well implemented nor tracking with student population needs and teacher abilities and their buy-in, use of electronic education tools had increased and not to the benefit of students-often used as a way to handle increased class sizes under the guise of individualized learning, with the exception of autism, children with learning disabilities are not well understood or addressed by the district and they immediately serve students with needs moving into the district as well as EL, but do not adequately serve those already in district and this problem is increasing with enrollment growth, owed to minority constraints in the community and passed a seismic referendum which does not address school growth appropriately. 31. Currently all substitute children are sent to Littlebrook. Strongly recommend dividing that population across multiple schools. 32. Did not make the expansion of the Charter School enough focus now more funds are being sent to them. The work done over the summer on Riverside is alarming in the sense that school was delayed at the beginning of the year and extra funds were needed to resolve the issues at hand. If all projects are managed so poorly I worry about where my tax dollars are going and if improvements will be made on time. 33. Difficulty making changes quickly - applies to all school districts. 34. Distributing responsibility among the elementary schools, utilizing facilities efficiently and effectively. 35. Managing parking and traffic congestion at dropoff/pickup. 36. District is spending 50% more per student per year than similar nearby districts. Renewing the send/reactive program with Cranbury was naive, misguided. 37. Ditto Cranbury concern! 38. DU program is impacting enrollment and displacing students to other schools. 39. Dress missed school time + more 40. Eliminate the charter school. It drains the rest of the community of resources we all need. 41. Minimize the under utilized supervisor positions and create that money for instructional support and other. 42. Engage PHS students in this discussion in real ways 43. Equity (broad equity report); Lack of diversity among teachers, especially in elementary schools, specifically school Park. Lack of career tracks above the high school level is a barrier as more than in a city school. I think it would have been an effect way to address growth and the demands of a 21st century education. 44. Especially in HS and PHS communication about programs and opportunities could be better. Sport clubs and even orchestra create chances for influx of private money and private interests, therefore bridge of equity. 45. Princeton Charter has been allowed for too long not only to benefit from PPS funding but to place his students ahead of PPS when it comes to academic programs and opportunities. Therefore creating inequality in PHS. Princeton PCS has a self appointed board of directors and the interest of a few white operators at a private school. It should merge with the district instead and serve all children in Princeton. 46. execution 47. Existing buildings cannot keep up properly, what will one more do to the mix and how will PPS maintain existing buildings 48. Explain the facts about Cranbury better so people can be on same page 49. Facilities (bathrooms, etc) out of date. No lake space for performances, etc. 50. Facilities at CP are old (classrooms too hot, too cold, etc), playgrounds so muddy that they don't use them some days 51. Facilities have not kept pace with acceleration of enrollment. The HVAC, bathroom, etc conditions at the high school are outrageous for the amount of space we pay for 52. Facilities, AC, Conditions and Environmental Conditions 53. Facilities, Technology (Smart boards, etc.) 54. Families are not fully and proactively informed about what makes their neighborhood school unique 55. Funding/lack of adequate resources to match the enrollment growth. Navigating the political landscape. 56. Intradistrict or intradistrict one priorities among involved parties. Need guidance 57. Guidance could be better at proactively preventing problems. CP principal not honest and not communicative enough, CP now has a system where non-districts are second class citizens and considered not as smart and also has less academic support because they do have more disabilities but the student teacher ratio is high. 58. Higher push-back on housing developments, stricter rules for student enrollment with PPS 59. I am new to the district. I do not have enough information to form an opinion yet. 60. I am very concerned that both the middle and high schools will be way too overcrowded once my 4th and 5th graders arrive. There are physical constraints that concern me, but also I am concerned that staffing (teachers, counselors) have not been increased adequately to maintain a high quality learning environment. I don't know 61. I don't know if this issue is due to budget pressure due to increasing enrollment, but the physical state of the buildings is really poor. For example, I was recently in the old library space in JW for high school registration conferences and it was actually unsafe from falling off the side, etc.). The outdoor art/art/playground facilities that I'm familiar with (Riverside, JW, PHS) are also in bad shape in general. 62. I don't know if any. Am we behind on improvements we ought to be making in light of the timing of enrollment growth? 63. I don't think larger class sizes are so bad especially if the teachers are not teaching outside the box and bring more creative w/ education. 64. I know there has been a good amount of well organized opponents, and it feels like the district has been tentative in responding and folded to them too easily. The district had a reasonable plan in the last referendum, and it's painful to see them growing and apologizing for not listening to all voices, when in reality they had a thoughtful plan and many forums to discuss it. Stand up for what you believe in! PPS I question the relationship with Cranbury. Growth would not be such an issue if it weren't for that arrangement. 65. I think PPS education is slowly weakening... a bit too much focus on making sure no one is left behind, and not enough spent on making sure that they remain competitive overall with charter and other schools. I worry this situation is only going to get worse. Spreading huge sums on crystal palaces for prior high school students is wasteful. Students can't afford to be a teacher as more they can't in a classroom. I did invest city student. Went to Yale. What matters is class size and teacher, and a dedication to making sure everybody is challenged, not only making sure those that are most challenged are not left behind. 66. I was sad the budget requests were not approved a few years ago for structural changes. 67. If possible, I'd like to see efforts to increase staff, so as to preserve low student-teacher ratios, particularly at the middle school level. 68. Improve relationship with PCS (added by someone else) how about incorporating them into the district 69. In order to address this problem weaknesses you need to know what they are-evaluate children when needed it's not routinely done now even if you would like to think it is 70. All this talk about equity but the special education staff was cut in the last budget, not increased...? Include data in presentations on projections for Cranbury as well as Princeton to make data-informed decisions that issue 71. Increased class size is definitely a disservice to the students. 72. Increasing physical space - or implementing other enhancements - will take years. District has not communicated what it can do in the meantime to handle the influx, especially at JW and PHS. 73. Inevitable faculty & staff facilities shortages. They use facilities daily. 74. It is cheaper to build new or add on rather than patch up 6 schools. Don't be swayed by the latest trend of open classrooms. Most students need quiet focus time away from social influence. 75. Lack of space, the school is currently extremely crowded the kids and I! 76. Lack of structural support for new students/families, students of color. Including people of color on the external development team 77. Larger classes sizes 78. Make responsible and practical plans for growth and think about where growth should go. For ex if most new units built in LA attendance zone, rethink attendance zones. If environmental taking, rethink its attendance zones. 79. Making investments or limiting new developments. 80. Meaningfully engage PHS faculty in helping solve space problems - this model is good - don't use "focus groups" - same people are dominating + they do not represent most of the faculty 81. Mentioned above, also why remove science from the school? 82. Mismanagement of budget. Cost per student is outrageous 83. More opportunity for budget/finance training for the school system 84. More resources for struggling students. Various learning has resources in systems. Not getting assistance in urgent need have severe deficits. Also, in classroom Math AIS is not sufficient for students who need help in this area. 85. MORE WORK IN THE AREA OF BALANCE: TOO MUCH HOMEWORK AND STRESS FOR STUDENTS. HELP FOR ELEMENTARY SHOULD BE REASSESSED. 86. My classroom has more students than it was built to handle. There is not enough storage for coats and backpacks. There is not enough room for 25 desks and chairs and 3 adults. And why do I have so many students in the class anyway? No other 4th grade in the district is even close to 25 students. Can't we zone better? And if we're gaining students, why did we let so many teachers go last year? 87. N/A 88. Need for better trained and paid instructional assistants. Need for more co-teaching models. 89. Need more attention to the influx of classified students - right now non-pp schools are simply being "dumped down" - real inclusion does not exist. 90. Need much better, more proactive, consistent communication - help people follow along, understand the problem 91. Need to better consider needs of DU program 92. Need to build public trust/support for redistributing/expansion projects. 93. Need to keep up with the times when it comes to classrooms requires more computer, science labs, smart spaces, etc. 94. Allow more collaborative space for experiential learning 95. No new parking! 96. Not disaggregating Cranbury data for this presentation 97. Not fulfilling all of the job openings that we have at our schools. Insufficient training for new staff hired after August/September - Additional technology needed for instruction. 98. Not sure where to put this comment + in the presentation the "one" turf field was presented as a strength, but in fact it is already below standard for conference, area + state, (all have more than 3 full turf fields) at current enrollment. There are significant implications to this - that need to be addressed. 99. Old buildings with limited space, school lunches aren't separate - no vegetarian options 100. Old infrastructure. Architectural inflexibility. Too many separate buildings. Separate MS and HS organization and structures. 101. One question I have is why the children from the Institute for Advanced Studies are bused to Littlebrook when they could be sent to Johnson Park. We love having them, but that would free up space. 102. Over-enrollment in some classes. Lack of enough sections for all students to enroll. 103. Parking 104. Phase out Cranbury kids - there are several excellent HS's closer to Cranbury 105. planning for the future has always been an issue. My younger sister and her cohort spent most of their high school years in trailers while PHS was undergoing limited upgrades, however these are still not sufficient. The Valley road buildings have not been used well and there has not been a comprehensive upkeep and growth program in place - I have lived in Princeton since 1994. 106. PHS elementary school resources should be dedicated to: - increasing the ratio of highly-trained teachers to students to adjust for the increasing student population - making sure students have adequate STEM and language instruction (fewer videos, load apps and watching TV while supervised by aides) - MORE in-service, personal, offline instruction by trained teachers 107. Although the schools may definitely need more space and some adjusted facilities, trimming top-heavy support and administrative salaries, eliminating unnecessary non-teaching staff, and streamlining fund management makes more sense than cutting trained teachers and decreasing the teacher-student ratio 108. PPS is charging parents \$200 for online versions of graduation required classes. Not everyone can afford that. 109. PPS lacks the proper amount of space for all of its students. The high school can get very overcrowded and many students are sitting off the floor. In addition, there need to be requirements for classes such as geography and racial literacy. 110. Pre-k capacity of enrollment 111. Put money into improving the facilities + programs! 112. Planning better for the future. Our high schools are in a state of emergency. It is important to look at existing classroom spaces for students who do not pay for a full share of tuition and the accompanying 113. Reduce onstreet parking from PHS + Whitehorse (to build a multi-story lot) 114. School buildings are becoming dated. 115. School class size at CP non DU is increasing. 24 kids in one class! Bus more kids to Johnson park 116. Seeking more tax when the budget is so obviously large. Have a look at other countries with better outcomes at a fraction of the per-pupil cost 117. Severe overcrowding in middle school and growing overcrowding in high school 118. Should not have renewed the agreement with Cranbury. 119. Should have talked more to the community about the plan for age-restricted housing instead of Avon, which would have increased income for schools without increase in students. 120. Slow moving and often reactive approach to problem solving 121. Smart Capacity Building: All classrooms should have co-teachers; and fewer but better paid and better trained instructional assistants. More bang for the buck, greater resilience. 122. Some class sizes are way too big. Our high schools are in a state of emergency. It is important to look at existing classroom spaces for students who do not pay for a full share of tuition and the accompanying 123. Space 124. Space utilization, outdated facilities. 125. Students have to change their ways every time they go to school. Our classrooms are not designed for the future. Group meet to regularly after school, kids who want to enjoy many activities are forced to commute to just one school. 126. Support of the DU program (community education, outreach to native Spanish speakers, Spanish language materials to teachers, community image of CP) 127. I am glad to see you improving your communication with the community. 128. The administration of PPS has not been upfront about the challenges that the school district faces. In particular, last year's secret tactics about the Charter School were misleading and gave us a lost opportunity to work together on a problem that affects all of us. Did PPS really think that Charter School would happily work together with us after the Superintendent demagogued the situation? 129. Also, I think a strong case can be made that the relative success of PPS is largely the result of the excellent socioeconomic makeup of Princeton families. The teaching at PPS is good, but not terribly ambitious. 130. Enrollment growth contributing to Cranbury township, new multi-family rental homes and rentals of people not working in Princeton. More equity can be constructed with verification of address and enrollment. 131. The district has been slow to adapt to changes in education. There has been a lot of talk about equity, inclusion, and educating students based on their individual strengths, however at the elementary level, there is no stable program of co-taught classes, where gen ed and special ed students work side-by-side. It is my hope that a culture of co-teaching will be fostered, and special ed students will begin working along with their gen ed peers in the same classrooms from an earlier age. This could possibly address enrollment by lowering the need for self-contained classrooms, teachers need more space 132. Hold Princeton University more financially responsible toward fund contributions when they continue to increase their housing for staff with family. Their financial contributions to NOT adequately compensate the strain placed upon tax paying residents for their continual increase of staff and grad students. 133. The DUs classes functioned much better when they had only 2 or 3 classes so that each class effectively had a partner class. The structure with 1 teacher is confusing and creates unnecessary logistical problems. All of this takes away from the benefit to the children. 134. WORSHIP 135. WORSHIP 136. WORSHIP 137. WORSHIP 138. WORSHIP 139. WORSHIP 140. WORSHIP 141. WORSHIP 142. WORSHIP 143. WORSHIP 144. WORSHIP 145. WORSHIP 146. WORSHIP 147. WORSHIP 148. WORSHIP 149. WORSHIP 150. WORSHIP 151. WORSHIP 152. WORSHIP 153. WORSHIP 154. WORSHIP 155. WORSHIP 156. WORSHIP 157. WORSHIP 158. WORSHIP 159. WORSHIP 160. WORSHIP 161. WORSHIP 162. WORSHIP 163. WORSHIP 164. WORSHIP 165. WORSHIP 166. WORSHIP 167. WORSHIP 168. WORSHIP 169. WORSHIP 170. WORSHIP 171. WORSHIP 172. WORSHIP 173. WORSHIP 174. WORSHIP 175. WORSHIP 176. WORSHIP 177. WORSHIP 178. WORSHIP 179. WORSHIP 180. WORSHIP 181. WORSHIP 182. WORSHIP 183. WORSHIP 184. WORSHIP 185. WORSHIP 186. WORSHIP 187. WORSHIP 188. WORSHIP 189. WORSHIP 190. WORSHIP 191. WORSHIP 192. WORSHIP 193. WORSHIP 194. WORSHIP 195. WORSHIP 196. WORSHIP 197. WORSHIP 198. WORSHIP 199. WORSHIP 200. WORSHIP			



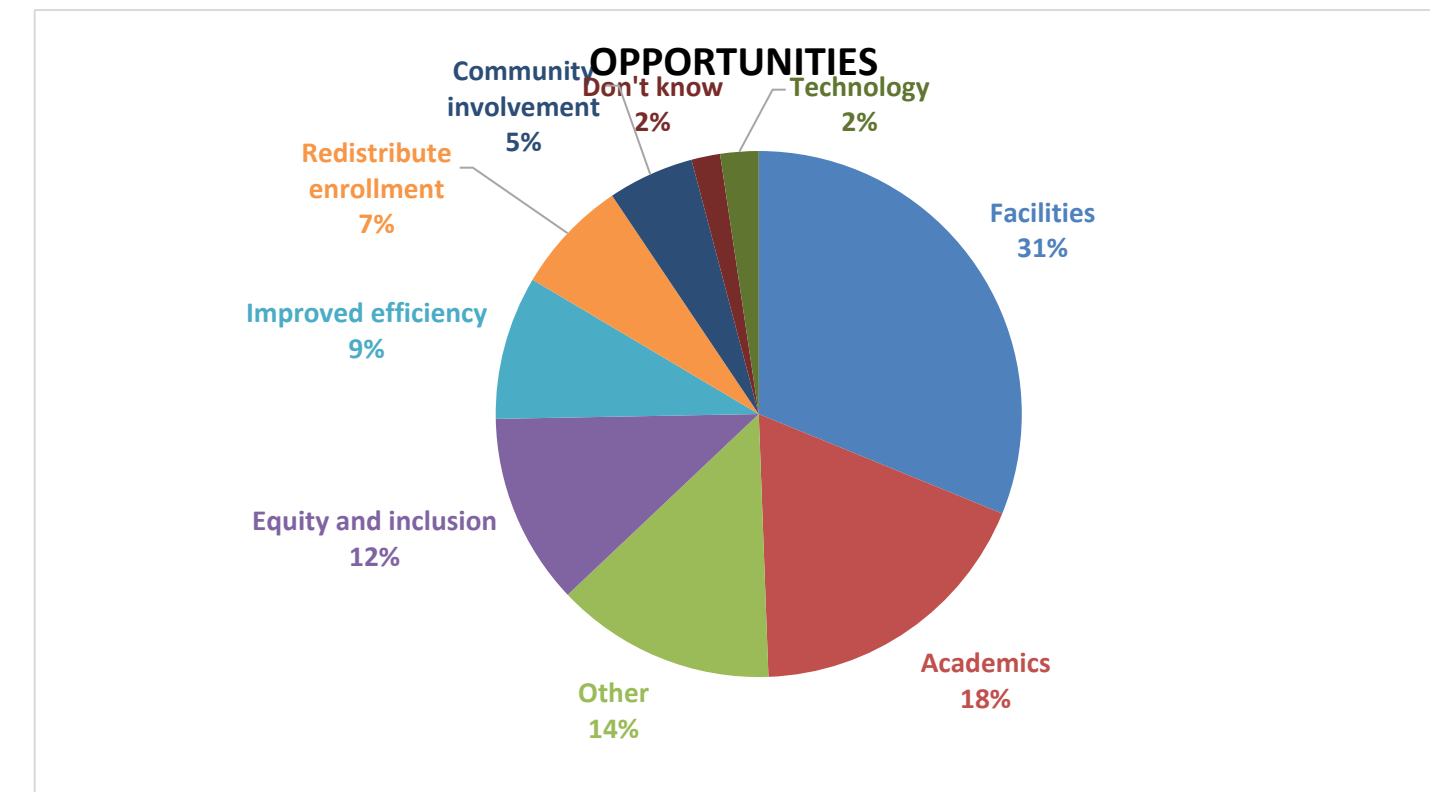
Princeton Public Schools Master Planning Process - Digital Workshop

What are PPS's opportunities? What opportunities for enhancements or improvements do projected enrollments present?

Answers	113
Skipped	378

Tags	Count
Facilities	53
Academics	31
Other	23
Equity and inclusion	20
Improved efficiency	15
Redistribute enrollment	12
Community involvement	9
Don't know	3
Technology	4

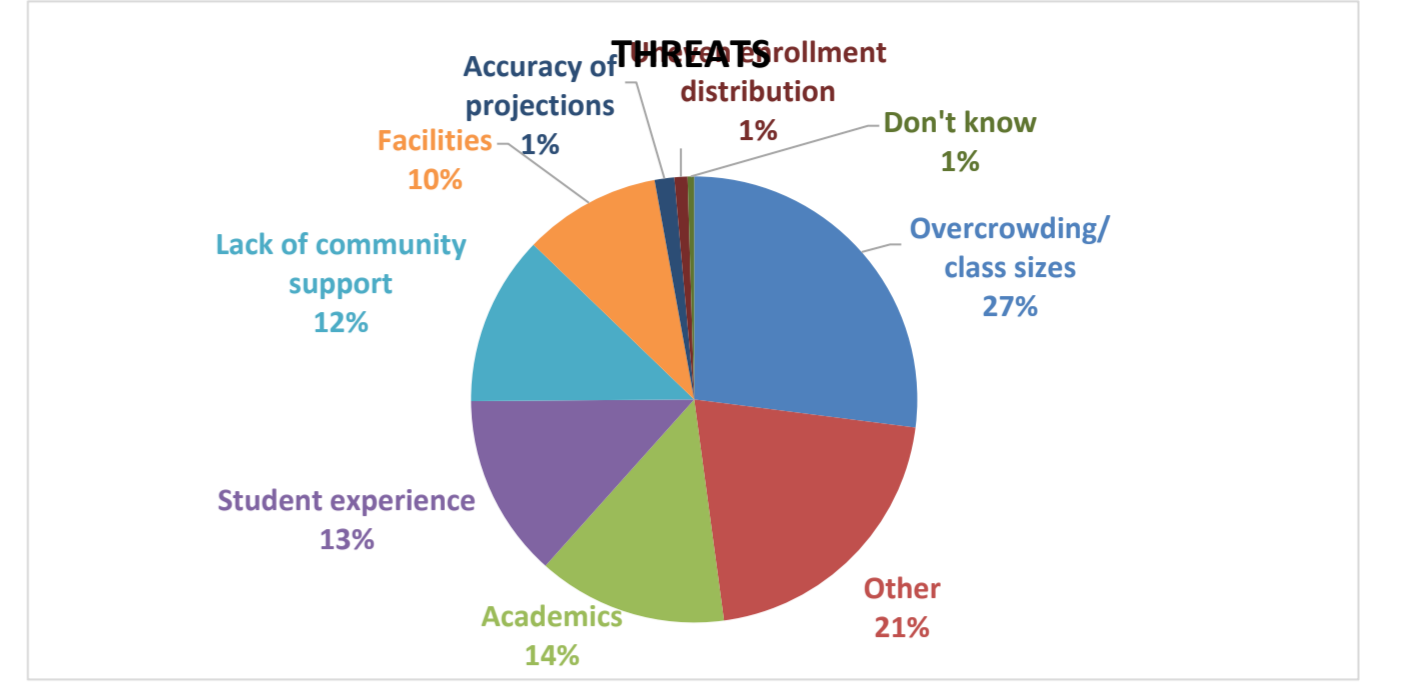
Respondents	Responses	Tag 1	Tag 2	Tag 3
1	- chance to review neighborhood served by elementary schools to even up capacity	Redistribute enrollment	Facilities	
2	- explore new grounds (Westminster college, valley road) to expand middle and high school	Facilities	Academics	
3	4. Create a 5/6 school	Equity and inclusion		
4	CHANGE TO YOUR CLASSROOM TO GO TO SCHOOL WITH SOME MORE AND EXPANDED OPPORTUNITIES FOR MORE DIVERSE LEARNING AND LEARNING OPPORTUNITIES, IN THE SAME WAY THAT LARGER UNIVERSITIES HAVE MORE FLEXIBLE SET OF DEGREES AND MORE SPECIALIZED PROGRAMS	Equity and inclusion	Academics	
5	A second look at how to use classroom time more effectively and efficiently.	Improved efficiency		
6	add minutes to day to allow passing time for JW; stagger times to provide separate buses for JW and PHS	Other		
7	Additional teachers to create smaller classes, more classrooms to provide needed space for classes and additional learning. Technology teachers providing instruction for students.	Academics	Facilities	Technology
8	teachers sharing a tiny little room. They each need their own space to service their children without distraction. These schools should be rebuilt and redesigned to where teachers can teach comfortably and safely.	Facilities	Academics	
9	Allows economy of scale for fixed costs like maintenance, admin and focus on hiring enough classroom teachers to prevent class sizes from getting too large	Academics		
10	As above.	Other		
11	Be sure to carefully consider parking needs - flooding is an issue	Other		
12	Being a true lighthouse district!	Other		
13	Better athletic fields and resources	Facilities		
14	Better heating + cooling. It's 20 degrees outside, but 100 degrees inside :)	Facilities		
15	Better use of space and new learning media -> leverage on-line courses, local colleges/universities	Technology	Academics	
16	Boost in moral for teachers, student, & community	Community involvement		
17	Building a 5/6 school would be an amazing opportunity. Developmentally 5th and 6th graders would do so wonderfully together. Buildings that promote health for all students and staff. Opportunities to assume population will in tact grow. Opportunity to use Valley Road	Redistribute enrollment	Facilities	
18	buy the choir college. perfect solution.	Facilities		
19	Change will bring creative solutions but students shouldn't be impacted. Transition is particularly difficult. Ensure sufficient staffing. Ensure that enrichment is not suffering (e.g. field trips). There are always talented people/parents out there who are willing to support wherever they can. Make good use of that. More than ever PPS needs those resources and should use them.	Academics		
20	Introduce more technology to the classrooms.	Community involvement		
21	Community buy-in	Community involvement		
22	Community engagement. In planning process for innovative ideas.	Community involvement		
23	Community-building. Warmth. Welcome and inclusiveness. Communication. Relationship building.	Community involvement	Equity and inclusion	
24	Continue to improve physical space and curriculum (we love DU Spanish)	Facilities	Academics	
25	coordinated/pooled extracurriculars, STEM, art and music; bigger schools mean teachers can be hired and have enough students; pooled disability services could be more efficient	Academics	Improved efficiency	
26	-Diversity and inclusion	Equity and inclusion	Community involvement	
27	-Resources and extended community network	Equity and inclusion		
28	Diversity in students and parents	Equity and inclusion		
29	Divide the middle school and enlarge the high school. Send more kids to JP.	Facilities	Redistribute enrollment	
30	Elementary schools could each be branded separately, so rather than neighborhood schools, families could make choices to go to each for different reasons. For example, CP could be focused on language and sports (given the proximity to swimming, tennis, soccer and baseball facilities); JP could be a smaller school with a nature-based curriculum, given its wooded setting.	Academics		
31	Engaged and supportive BOE and community bring financial and intellectual resources	Community involvement		
32	Enhanced offerings to compete with private schools.	Academics		
33	Expand the schools. Make them larger.	Facilities		
34	Expanding of schools and limiting Princeton new developments	Facilities		
35	fundamental changes to how special ed services are delivered; new construction opportunities may also allow for more experiential learning	Facilities	Academics	
36	Given the projects of higher enrollment due to new housing development, it seems inevitable that we will need to expand capacity at the middle school and high school level.	Facilities		
37	Great opportunity to present a vision of success into the future - growth flattens out so the next decade sets the stage for many years to come. great sports opportunities in high school, would like middle school not to cut kids at all from sports, great clubs and trips for kids although trips expensive, great opport	Improved efficiency		
38	greater diversity in the student body	Other		
39	Harness community resources to better education	Equity and inclusion		
40	I don't see how any enhancements or improvements can be made when the facilities are already in terrible shape and money from the bond referendum is not enough	Community involvement		
41	I don't know	Facilities		
42	I hardly see overcrowded schools as an "opportunity for enhancement." I'm not sure what this question is getting at.	Don't know		
43	I would be interested in the idea of a 5th-6th grade school	Other		
44	I'd hope that there is the opportunity for smart, strategic growth and improvement to handle not just the enrollment increase but also to meet plans/goals for future programs.	Facilities		
45	If the projections are to be believed redistributing at the elementary school level would be in order.	Improved efficiency		
46	Improved collaborative spaces @ JW + PHS, especially	Redistribute enrollment	Facilities	
47	In order to have accurate, comprehensive enrollment projections re: affordable housing settlement, the number of PPS students must be provided for affordable units vs. market units at Avalon/Hospital & Mernick Stanworth i.e., to indicate there are 84 PPS students at Avalon is meaningless. Avalon has 56 affordable units + 224 market units. How many of the 84 students live in affordable units? In addition, affordable units include 18R, 2BR, & 3BR units. You must break down your data! The 224 market units include studio, 1BR, 2BR, & 3BR apartments, and 12 townhouse (8 2BR & 4 3BR). You must break down this data. You must do the same for Mernick Stanworth. Using census data + guestimated multipliers, based onomarc data from other places is NOT sufficiently accurate. You must provide "on the ground" factual, actual data.	Other		
48	Incorporate Charter School into planning	Other		
49	Increase mental health services @ middle & upper school	Other		
50	Increase enrollment via affordable housing will bring more diversity + opportunity for more to enjoy the great PPS system	Equity and inclusion		
51	Increased enrollments provides opportunity to bring new socioeconomic diversity to Princeton schools.	Equity and inclusion		
52	instead of focusing on expanding, let's fix the shortcomings of the current facilities first. HVAC, plumbing, security, etc need to be addressed before adding a level to the high school gym.	Facilities		
53	Invest in hardware from increased tax revenue.	Technology		
54	It gives us the opportunity to get rid of Cranbury students.	Other		
55	It is going to take longer to ???	Other		
56	It seems like all of our schools are ill-situated to make the best use of the sun/shade and winds. It'd be great to be more compatible with the environment. So much of each of our structures are in disrepair. Tearing down/gutting (keeping facades if necessary) to improve the bones, like HVAC and wiring (tech and electrical need to be updated and more accessible) means a chance to update buildings for modern use. We're working against our structures. Let's take the opportunity we need to add space and to reinvent existing space to our current and future needs. I like the idea of a 5/6 school. We might also think of having four elementary magnet schools instead of four neighborhood schools. DU has effectively turned CP into a magnet school. Maybe there could be a STEM school or two? Maybe an arts school?	Facilities		
57	It's hard to imagine how the facilities will improve without purchasing new land, starting new construction, etc. I do not know the scope for such activities given the current budget.	Facilities		
58	keeping the spirit of the school	Community involvement		
59	Lots of land. The Valley Road facility is largely unused. Also, opportunities to rent out the sports facilities to local clubs - especially if we created a football artificial soccer field at Valley Road. Pay for itself in a couple of years.	Facilities		
60	Low pressure on ES (flat) enables some catch-up to be done.	Other		
61	Make Princeton Charter School one of the PPS schools.	Other		
62	Make these eco friendly and energy efficient! Build in recycling and compost programs and an organic garden at the middle school! Use solar to heat the pool. Close the roads to traffic around school entry and exit time so that kids on foot and bicycles would be safer. See about student input on design - what do they think would be great, and what do students think the worst physical spaces part of school is and what could be done about? How do we envision a learning environment that demonstrates our commitment to sustainability, respect, diversity, Princeton's multi cultural contested history as subject matter? Why not murals or public art?	Facilities		
63	Management resources to reduce cost	Other		
64	more collaborative spaces for students, beautiful outdoor spaces for collaboration	Improved efficiency		
65	MORE DIVERSITY?	Facilities		
66	More dollars	Equity and inclusion		
67	More economic diversity in the district. A chance for more children to benefit from our great schools.	Other		
68	More teaching opportunities to be opening up	Equity and inclusion	Academics	
69	My children are at CP. Already the health sciences curriculum has been negatively impacted. For example, there used to be a classroom for health. This was taken away. There used to be a teacher for health, this was taken away. It is very noticeable that resources are scarce and the school is making do with less than it needs. The principal and teachers are trying their best, but do not have support to provide high quality education and support to students.	Other		
70	Need more long-term thinking about how to build infrastructure now/in the next decade that can last for many more decades and be repurposed at low cost and carbon-neutrally as future needs change. More meaningful investment in sustainability, please.	Facilities		
71	Need to be careful not to be alarmed as low enrollment increases. They probably will take longer than projected and a good response would be judicious additions over time rather than underestimating a brand new school site innovative way for small additions. Also the pipeline changer conservatively whom the elementary sending districts are reconfigured. If can with changes conservatively	Other		
72	Need to expand	Facilities		
73	New additions to the buildings, changes in the elementary school district lines, creative thinking	Improved efficiency	Redistribute enrollment	
74	New offerings for a few students	Academics		
75	Not sure yet. More per pupil funding should mean a chance to make programs for all students either better, or more diverse.	Don't know		
76	Not sure. Hard for me to see the packed houses at PHS and JW as anything but a negative.	Don't know		
77	Nothing, unless they fix the problems.	Other		
78	Offering health + mental health services within our school facilities w/ expanded space + security (maybe offer these services to broader community as well afterschool)	Other		
79	Opportunities for a more diverse school community	Equity and inclusion		
80	Opportunity for a redesign of the use of space to accommodate varying and increasing forms of teaching and student/teacher interaction.	Facilities	Academics	
81	Opportunity to better align space with educational program in process of accommodating enrollment growth.	Facilities		
82	Opportunity to bring average expenditure per student in line with state average for socioeconomic demographic.	Improved efficiency		
83	Opportunity to redesign spaces to foster more inclusion	Facilities	Equity and inclusion	Redistribute enrollment
84	Opportunity to redirect to make elementary schools more diverse/less segregated and improve equity between schools	Facilities		
85	Our facilities are old and outdated ... let the imperative to expand also be an opportunity to modernize.	Facilities		
86	Perhaps larger numbers can support more specialized / supplementary programs. For example, could more after school enrichment be offered on the school sites? Piano lessons, robotics classes, dance classes, etc etc? This would be both a service to parents / children, and possibly also a new source of revenue for the schools.	Academics		
87	Possible facility improvements, more teachers hired. More opportunities for students.	Facilities		
88	PPS could take a great leap forward by expanding the special activities offered as part of the standard curriculum. My daughter loves the "specials." PPS has an opportunity to stand out from other nearby private high schools by truly centering learning and discovery rather than test scores and "achievement."	Academics		
89	PPS has the opportunity to allocate funds in a way that line up with our values as a community: -excellent education, including arts, music, gym, STEM, language and literacy for ALL students -supporting all students and families appropriately, equalizing families across any income divide -creating an inclusive, politically-progressive, nurturing atmosphere where all families feel welcome (the DU program at my daughter's school facilitated this)	Academics	Equity and inclusion	
90	Pre-k program might not be enough; consider programming for 0-3 yrs	Academics		
91	Provide lower income families great educational opportunity	Equity and inclusion		
92	Projected increased enrollments present only problems, no opportunities.	Academics	Equity and inclusion	
93	Purchase site(s) for school expansion. (Choir college?)	Facilities		
94	Really rethink and design a better system for the long term vs. applying long term band-aids (short term band-aids necessary)	Facilities	Improved efficiency	
95	Re-assign housing to schools, given that Riverside and JP enrollments are projected to decrease, while Littlebrook's is projected to increase substantially. Stricter criteria for enrollment in Littlebrook	Redistribute enrollment		
96	Recent and projected increases in populations of students learning English provides an opportunity for the system to re-invest in resources and programs targeted to serve these students, particularly bilingual staff (counselors and social workers as well as teachers), physical spaces, and curricular opportunities, especially at the middle and high school levels.	Equity and inclusion	Facilities	
97	Redesign curriculum to one that is more appropriate for 21st century learning (i.e. collaboration, more group projects, self-directed learning). Incorporate wellness into the curriculum.	Academics		
98	Redistributing students to neighborhood students are kept together.	Redistribute enrollment		
99	Redistribution of resources	Redistribute enrollment		
100	redirect town for elementary schools, build, expand, and modernize middle and high schools.	Redistribute enrollment		
101	Remove car busy student enrollment from high school - they do not contribute to capital costs. Improve efficient use of resources. Increase transparency of spending. Eg. Why does PPS spend 30% more than west windsor school district? Are we getting 30% better education/more resources/better facilities? Or are we wasting 30% more? Communicating this sort of info would be valuable.	Improved efficiency		
102	Revisiting existing space and how we adjust for needs.	Facilities		
103	Room for more DU languages due to economy of scale.	Academics		
104	Selling off the 4 elementary and VR properties, laying off redundant administrators and staff, consolidating transportation routes.	Improved efficiency		
105	Smart hiring, more classrooms.	Facilities	Technology	
106	Some of the construction going on is good, but these are just band aids.	Other		
107	Space and time for students to explore developmentally appropriate learning opportunities, with exposure to diverse backgrounds blessed with all the resources that OS&AD has to offer.	Facilities	Academics	
108	Take Valley road and make it a middle school. Build a new middle school and do what Montgomery does. 5&6 in one building, 7&8th in another building. LOWER AND UPPER MIDDLE SCHOOL.	Facilities		
109	The aging facilities are inadequate and reconfiguring them is an opportunity to consider how to use architecture to enhance learning and also community	Facilities		
110	Develop a program and culture of collaborative coteaching.	Academics		
111	more people means more diversity - this is a great thing	Equity and inclusion		
112	Bigger and newer school facilities. More specialized programs like STEM, G&T programs with more diverse group of talent.	Facilities	Academics	Equity and inclusion
113	We need to work on creating schools that accommodate the growing population and more modern spaces in which to teach and learn. Trailers are not good learning environments. I really think the 5-6 school is a great idea. We need to modernize and expand the learning spaces in the high school.	Facilities		
WORKSHOP	The for better or worst our whole world is transforming. If handled well, addressing the enrollment issues can also be an opportunity to alter or create educational spaces/experiences that will better prepare our students for this new world.	Academics		
WORKSHOP	There is the opportunity to make those online classes without charging the parents. The town of Princeton gives approximately \$350k a year for community based media projects. Why not include online courses as part of that budget?	Academics		
WORKSHOP	To grow emerging programs such as DL, giving opportunities to those from low income families as well as those with special needs, bridging achievement gaps, modernizing buildings and spaces, creating more room for STEM and the arts	Facilities		
WORKSHOP	Update for 21st @ learning - collaborative spaces	Academics		
WORKSHOP	We have the opportunity to provide a great education to more students hopefully a more diverse population of students which will benefit the entire community	Academics		
WORKSHOP	With projected/planned affordable housing devts. Contributing to enrollment increases, PPS has opportunity to partner w/ early learning + birth-3 service providers to ensure low income kids are ready to succeed in our schools	Academics		
WORKSHOP	The district needs to be honest about its finances. It needs to look at how well management of the district is functioning.	Community involvement		
WORKSHOP	The wider Princeton community has a poor image of CP (including realtors who tell parents purchasing housing that CP is seen as the least preferred school). This could be changed if the district invests in consultants embedded at CP who support our teachers to embrace district goals of case mediation, restorative justice and wellness. To change community perceptions, real change needs to happen at CP. This will not happen unless the district actually invests in CP students.	Equity and inclusion		
WORKSHOP	We could seriously address the equity issue if we could stop ignoring certain students	Equity and inclusion		
WORKSHOP	Welcoming children into our community and strengthening our community's social fabric	Equity and inclusion		
WORKSHOP	The opportunity to reconsider the Cranberry agreement. Also the opportunity to make better use of existing properties such as Valley Road, which is currently underutilized.	Facilities	Improved efficiency	
WORKSHOP	The schools are in need of upkeep and improved outdoor facilities; there needs to be a plan in place for middle school and high school facility expansion and improvement of common spaces, athletic fields and other facilities. Parking needs to be a secondary consideration, and this is a great time to put together a comprehensive plan for sustainable traffic solutions— currently much of the high school, middle school and CP is dedicated to parking and placing the parent car-pick up line as close as possible to the entrances to the schools. Kids can walk a little further and those spaces used for facilities instead. Improves walking and biking access, improved and less toxic bus/shuttles, and decreased lines of parents idling in car-pick-up lines need to be part of the plan for the future.	Facilities		
WORKSHOP	Thinking outside of the box to utilize the expansive options that are already available (and owned) by Princeton and PPS. Rethink space utilization-rethink employment needs - rethink everything.	Facilities	Improved efficiency	
WORKSHOP	Update old, falling apart facilities	Facilities		
WORKSHOP	Use the opportunities to update the facilities.	Facilities		
WORKSHOP	We need to consider flexible solutions to these issues. The enrollment will change, the curriculum needs will change. The solutions should allow for the schools to adapt the spaces to the needs.	Facilities		
WORKSHOP	Westminister school is a great space. Invest in capital improvements at sites, private waste and infrastructure programs. Use the idea of linking to schools. Reduce traffic congestion at peak times. Resolve parking issues at high school. Work with YMCA/YMCA to build better after school	Facilities	Improved efficiency	
WORKSHOP	westminster	Facilities		
WORKSHOP	Westminster campus.	Facilities		
WORKSHOP	Understanding of external factors re overall space in Princeton - open space planning; dense housing planning; re-zoning; Charter School and where comes into process	Improved efficiency		
WORKSHOP	Utilize Princeton Community's combined wisdom, lessons learned and their skills/knowledge to provide comprehensive inputs to the processes, analyses, assumptions and many other variables that may affect the decisions. For example, the present analysis could be expanded to take other variables into account. For example, Charter School private schools (their future plans), I shall provide more comprehensive inputs. \$ Sharna spsharm@gisulad?????ns	Improved efficiency		
WORKSHOP	The students at PHS have a motivated and caring network of parents/family and friends will to help support efforts. The teachers are incredible and with support can push PPS student's to higher achievement.	Other		
WORKSHOP	We can accomplish secondary goals in dealing with the larger issue.	Other		
WORKSHOP	We need a teacher village - provide housing for teachers close to schools.	Other		
WORKSHOP	The DU program at CP is changing the "neighborhood school" aspect of PPS, for good and bad. That exposes opportunities for redistributing. But JW and HS are still bustling, so we need to create more space for those students.	Redistribute enrollment	Facilities	
WORKSHOP	To reconsider ES zoning, to reimagine classroom space for new teaching styles.	Redistribute enrollment	Facilities	



Princeton Public Schools Master Planning Process - Digital Workshop
What are PPS's threats? What threats or obstacles does enrollment growth pose for the District?

Respondents	Responses	Tag 1	Tag 2	Tag 3
		Answered	129	
		Skipped	362	
1	- maintain quality and diversity of teaching and options - keep investments at the right level	Academics		
2	^Ditto (particularly w/ anti-Cranbury sentiment among some residents - but not most students & teachers)	Lack of community support		
3	100% affordable housing that is not mixed with market rate housing can cause those kids to feel segregated especially if they are bused as a ground to a far away school 5. Watered down instruction 6. Less opportunities for electives at p/s 7. Higher enrollment means larger class size and higher drop out rates	Student experience	Academics	Student experience
4	Accuracy of projections is very questionable	Accuracy of projections		
5	Already crowded classrooms are a problem.	Overcrowding/ class sizes		
6	At some point, we will run out of space, affecting class sizes + enrichment offerings. The data show we are running out of space soon.	Overcrowding/ class sizes		
7	Being closed minded is the biggest threat, we need to be open to doing things differently	Lack of community support		
8	Bigger class sizes, increased burden on an already aging infrastructure, higher taxes suggest impact on our kids' educations (competition + is recent) has been quality of teachers. This should be biggest part of future statewide budget, winning over the public to support necessary funding	Overcrowding/ class sizes		
9	Charter feels like a threat.	Academics		
10	Charter school taking funds from public schools.	Lack of community support		
11	Charter school taking monies from our schools. Too many students with crowded classrooms and not enough teacher attention.	Other		
12	Checking off boxes to meet state requirements in a rush without enough input or planning. The district also makes policy changes without evaluating them later.	Other		
13	Class size	Overcrowding/ class sizes		
14	Class size, gym, auditorium, participation, extracurriculars, art, music, theatre, fully addressing only student needs/equity	Overcrowding/ class sizes		
15	Class size/space in the schools and therefore specialist classrooms I would imagine.	Overcrowding/ class sizes		
16	Class sizes too large, not enough individual attention, overcrowded shared space, risk of cuts to arts, etc.	Overcrowding/ class sizes		
17	Community infighting-risk that vested interests do not appropriately consider how community as a whole succeeds	Lack of community support		
18	Community that doesn't like change and may be resistant to restricting	Lack of community support		
19	Too many community members who feel like they are experts and know better than the admin, BOE, consultants, etc and refuse to accept that there even is a problem with enrollment growth and/or don't want to spend money on new school(s)	Lack of community support		
20	Consultants will recommend more spending	Other		
21	Continual support of programs that use resources (space, staff and money) that does not address a need in the district.	Lack of community support		
22	Continued misunderstanding of the positive financial net benefit of Cranbury students at PHS	Other		
23	Continued poor planning and excluding community will prevent any meaningful referendum passage in the near future.	Lack of community support		
24	Cost.	Other		
25	Cost-limited space and budget could inhibit PPS's ability to increase staffing, facilities, etc.	Facilities	Other	
26	could make classes significantly bigger, which would be a serious detriment; Charter School siphons budget from rest of schools	Overcrowding/ class sizes		
27	Crowded classrooms less opportunity for excellent learning.	Overcrowding/ class sizes		
28	Enough pace in the classroom and ensuring students get their elective choices in high school, esp computer science	Overcrowding/ class sizes		
29	Enrollment trends indicate that some ES as well as both HS and MS will exceed capacity	Overcrowding/ class sizes		
30	Excitement ahead will lead to reduction in performance	Overcrowding/ class sizes		
31	Excellent teachers can't teach 120 students using pedagogy better suited to small classrooms. The best ones seem to shift to a top-down, clearly defined content based style, given grading time, teaching challenges of large classrooms, and cramped space. Innovative and exciting methods just aren't so scalable. The real loss will be in losing excellent teachers as they burn out, and losing excellent students as teachers don't give adequate individual attention. There also needs to be an inside out approach to values, not just talking about key values, but walking the talk and giving teachers and admin opportunities to grow and learn how to do that better. Modeling growth mindset, openness to challenges, a sense of intellectual adventure not just building up an impressive record. There are lots of great models of these wholehearted people in PPS; please don't fail to appreciate them and help everyone to grow and thrive! Too much bottom line, short term thinking can kill what is special in a social culture.	Overcrowding/ class sizes	Academics	Student experience
32	Excessive reliance on cars for transport of students creates traffic, endangers pedestrians and cyclists, and causes pollution. Could be worse with more students.	Other		
33	Falling home values and shoddy schools.	Facilities		
34	False narratives such as that Cranbury is bad that some can't let go despite the data to the contrary	Other		
35	Families are moving here only for jr high or high school, and then leaving after the kids graduate since it's too expensive to live here. They are moving here for the district education. People are no longer staying and living here in their retirement years. Just too expensive.	Other		
36	finances	Other		
37	From long term we need to see if Cranbury high school students coming to Princeton may have unforeseen threats	Other		
38	Further moving away from its mission to know every child and enable children to teach their potential.	Academics	Student experience	
39	Growth of out of district students	Overcrowding/ class sizes		
40	High costs	Other		
41	Higher class sizes	Overcrowding/ class sizes		
42	Home schooling because of various educational factors that influence student's and staff's wellness on a whole.	Other		
43	How can our children grow and learn and have meaningful interaction when facilities are in such bad shape and over-crowded. All the new housing developments where the kids will all go to Littlebrook - it makes no sense. There is no room! They need to be bused across town to Johnson Park if their enrollment is falling	Overcrowding/ class sizes	Facilities	
44	I have elementary school children and I am very concerned about overcrowding at JW and PHS if the problem is not addressed.	Overcrowding/ class sizes		
45	I see growth as a positive!	Other		
46	Impact on budget of 2% cap + Charter School	Other		
47	Impact on budget with constraint of 2% cap	Other		
48	Include Cranbury into the projection	Other		
49	Increase in enrollment and aging schools	Overcrowding/ class sizes	Facilities	
50	increasing academic pressure on our students, not allowing them to develop social skills. losing the old school small community feel or mission.	Academics	Student experience	
51	Increasing class size again will stretch teachers in ways that are not healthy. We feel less effective when we spend more of our time managing over teaching time.	Overcrowding/ class sizes		
52	It creates the obvious risks of overcrowding and underfunding.	Overcrowding/ class sizes		
53	Lack of adequate space. Ability to address needs of a more diverse growth population and foster equity, opportunity and comfort for all students.	Overcrowding/ class sizes	Facilities	
54	Lack of appreciation for how excellent Princeton's public school are and lack of adequate funding	Academics		
55	Lack of communication	Lack of community support		
56	-Lack of effective communication between faculty and admin	Lack of community support		
57	-Limited resiliency and independence of high schoolers	Academics		
58	Lack of smart planning now and follow-through in a timely manner. We do not want an school system to over capacity.	Overcrowding/ class sizes		
59	Lack of support from the Princeton community. Further crowding and increased class sizes will degrade the educational effectiveness of PPS.	Lack of community support	Academics	
60	Large class size; inability to see each student.	Overcrowding/ class sizes		
61	Larger class sizes will hurt the quality of education.	Academics		
62	Larger classrooms means less attention to students needs.	Student experience		
63	Losing its reputation and ability to consistently deliver high quality education as things get cut at the margins (for example, professional development, DEI efforts, extracurricular or co-curricular activities)	Academics		
64	loss of AP offerings; loss of language offerings; loss of sports opportunities	Academics		
65	Many people choose to live here because of the quality of the public schools. If the quality of children's education or experience declines it will present a major challenge for the community.	Academics		
66	May need to expand DU to other schools to relieve pressure on CP if demand persists.	Academics		
67	Mean spirited finger pointing!	Lack of community support		
68	Money wasted on the wrong things	Other		
69	More programs + more space + more 5	Facilities	Academics	
70	more space is required	Facilities		
71	Need to expand but maintain same strong brand and reputation	Overcrowding/ class sizes		
72	The middle school situation is terrible with overcrowding	Overcrowding/ class sizes		
73	Neighborhood school "feeling" may be impacted	Other		
74	NIMBY-ism. Racism veiled under the claim of "maintaining the character of the neighborhood character". I don't want kids from new developments and especially the affordable housing to be seen as interlopers who will destroy a beautiful school system. I already hear murmurings of this attitude eg people objecting to new developments because the schools can't cope. This is the beginnings of an 'us vs them' situation that is needs to be nipped in the bud. Yes enrollment is growing and it is in part due to the new developments, but this has to be framed as an opportunity to 'do something', not 'fixing a problem'. In addition it has to be done without costing the towns much as the new developments will then be framed as the reason for the expense feeding into the us vs them attitude	Lack of community support		
75	not enough space for seating in classrooms, larger class sizes and therefore less personalized attention from teachers	Academics	Overcrowding/ class sizes	Student experience
76	not supporting the diverse mix of Princeton students	Student experience	Other	
77	Not sure but I think overcrowding	Overcrowding/ class sizes		
78	Number of housing units being constructed, seems like uncontrolled pace without proper planning and stricter limits on number of units	Other		
79	Objections/fear of needs for re-zoning for elem schools	Lack of community support		
80	Obstacle - more students means need more money to hire more staff and obtain more space. I do not see any "threat" and would caution against this language.	Other		
81	Obstacle: Cranbury agreement	Other		
82	One of the key threats is from the Charter School - what are their plans? Need co-operation so the Princeton community can have both systems that are affordable. More to come - S. Sharma	Other		
83	Our facilities become an embarrassment to the community & detrimental to prosperity values + the ability to attract faculty to Princeton values	Facilities		
84	Our kids live in a complex world where bullying means videos on Tik Tok as much as it does snide comments in the hallways. Larger enrollment means more emotional turmoil to handle. PPS needs more investment in counselling.	Student experience		
85	Over doing the ridiculous equity, because it really isn't working. Take the \$25,00 bonus the superintendent received and use it for the actual instructional needs	Other		
86	Over enrollment increases the wear and tear of all ready tired and old buildings. Also, over crowded schools is a public health issue.	Overcrowding/ class sizes	Facilities	
87	Overcrowded classrooms	Overcrowding/ class sizes		
88	Overcrowded facilities, class sizes too large, rise in student - teacher ratios.	Overcrowding/ class sizes		
89	Overcrowded schools, declining quality of education, facilities maintenance/safety.	Overcrowding/ class sizes	Facilities	
90	Overcrowding and a decline in the quality of the teaching. This leads to a death spiral when combined with a lack of financial flexibility.	Overcrowding/ class sizes		
91	overcrowding and teacher morale	Overcrowding/ class sizes		
92	Overcrowding in classes and lack of ability to take the class you want/need.	Overcrowding/ class sizes	Academics	Student experience
93	Overcrowding, larger class sizes, less attention for individual student needs. less materials available to students.	Overcrowding/ class sizes	Student experience	
94	overcrowding, reduced resources for other needed improvements.	Overcrowding/ class sizes		
95	Overcrowding.	Overcrowding/ class sizes		
96	Overcrowding. Aging facilities. Not enough in-class staff. Too many administrators. Too much focus on DU at the expense of everyone else.	Overcrowding/ class sizes	Facilities	
97	Overdevelopment, township approval of several multi family projects, etc are overburdening the PPS infrastructure. Irresponsible addition of these students, as a result, is clearly the greatest threat to eroding the quality of the PPS	Other		
98	Over-stretched faculty, increased class size will lead to the decrease of education quality.	Overcrowding/ class sizes		
99	Particular pressure on High School	Student experience		
100	People move to Cranbury and pay LOTS less in taxes than if they moved to Princeton but get the same education. Our students are overcrowded due to the presence of their students.	Overcrowding/ class sizes	Other	
101	Physical space and finances, making sure to keep class sizes manageable and education state of the art	Facilities	Overcrowding/ class sizes	
102	Please plan for climate change. (The presentation's references to increasing parking were horrifying in this regard; we need to be doing everything possible to decrease use of private automobiles)	Other		
103	Population increasing faster than we can accommodate due to postponement of the referendum and a longer timeline to enact the current referendum. Charter obligations are killing us. Debilitating budget constraints. How many studies do we need, no offense?	Other		
104	Possible Class Sizes to increase	Overcrowding/ class sizes		
105	Potential for a new school (private or Charter) moving in and skimming off the top students.	Other		
106	PPS has a tendency to think of its student body and community in a certain way. As the town (hopefully) diversifies in coming years, it will be a challenge for community members and leaders to re-conceptualize "who PPS students are" and what their needs are to include more than just the powerful and well-served.	Lack of community support		
107	PPS has been a very slow moving organization. Increased enrollment, charter school creates inequality. How to keep quality education and opportunities for all?	Other		
108	PPS talks a lot about wellness and equity - but policies don't always support those goals. Excessive use of screens in the elementary schools, homework across all grade levels and cuts to AIS hurts all student wellness and learning.	Student experience	Academics	
109	Private schools that can offer more due to high level of funds available	Other		
110	Program quality will deteriorate as increased enrollments and static or declining facility size cause student/teacher ratios to increase, while institutional arrogance prevents administration and faculty considering approaches to teaching and learning that puts more responsibility on students.	Academics	Student experience	
111	Property taxes in Princeton are forcing residents to use the public schools creating a need for increases property taxes - a unsustainable model	Other		
112	Real threat that community trust has been lost. Too many decisions have been made behind closed doors.	Lack of community support		
113	Reduced programming	Student experience		
114	Reduced quality in education due to increased enrollment and lack of planning.	Academics		
115	Resources and relationships are already stretched thin. Although I encourage being welcoming to all, enrollment growth will continue to make connection, warmth, relationship-building a struggle.	Lack of community support		
116	Running out of space / teachers / money &c.	Facilities		
117	see above: more students means more teachers and larger class size. this can be a big problem, especially if the best students leave public education because they don't want their kids dragged down by pressures of meeting the needs of less competitive students, huge Similar to West Windsor Plainsboro. Increased student-teacher ratios. But this is a question of managing parent expectations and allowing principals and teachers to do their jobs.	Overcrowding/ class sizes		
118	Small class sizes used to be very important to the district. It is extremely important to providing a competent education. Is that something we still value? If it is, you've got to be proactive about it.	Overcrowding/ class sizes		
119	Small mindedness and insularity in response to growth rather than an opportunity for emotional development and embrace of diversity.	Lack of community support		
120	Space for kids to learn. Too-crowded classrooms won't allow for best teaching + learning	Facilities	Overcrowding/ class sizes	
121	STUDENT TEACHER RATIO IS LARGE. HARD FOR TEACHERS TO DO THEIR JOBS WELL IF THERE ARE TOO MANY STUDENTS. KIDS WILL NOT GET ATTENTION OR DIFFERENTIATION THEY NEED TO SUCCEED.	Student experience	Overcrowding/ class sizes	
122	Students will be less known by teachers/staff.	Student experience	Overcrowding/ class sizes	
123	Class sizes will grow too large.	Other		
124	Teachers need our support to be their best selves harder to do in sub-optimal environment**	Lack of community support		
125	The biggest problem probably is overbuilding. We are trying to encourage minority growth while increasing taxes. That doesn't work. The community really needs to understand the need. So many years that one they were educated was for them so it should be time for today's kids, but the world today is very different. We need to plan for the future, not the past or even just the present. I think people need to have tours of the school while in session to see the crowding, which will only get worse. I think students at each school should make a photo essay about what the day is like, so parents can see pictures from the students' perspectives of the good and the bad aspects of their schools.	Lack of community support	Overcrowding/ class sizes	
126	Why do we take students from Cranbury? Can this be changed to mitigate the resource constraints?	Other		
127	different groups of people need to be taught how to work together and view differences as strengths	Other		
128	Overcrowded facilities, facilities having challenges with overbooked students and work on their end. Quality of teaching can drop due to that	Overcrowding/ class sizes	Academics	
129	Overcrowding of space. Increased traffic. Increased taxes for residents.	Overcrowding/ class sizes		
WORKSHOP	too large class sizes	Academics	Student experience	Overcrowding/ class sizes
WORKSHOP	With too many students in the classrooms, teachers have little hope to know each student. The spaces will be more chaotic than a traditional	Academics	Student experience	Overcrowding/ class sizes
WORKSHOP	Unfit learning environment!	Academics	Student experience	
WORKSHOP	Waste of tax money if the enrollment forecast is off; layout of additional educators from the district.	Accuracy of projections		
WORKSHOP	There is also the concern that if the enrollment forecast is off, the district may have to adjust the enrollment forecast. If it is wrong, how many students will be enrolled in the school system. Until we take a harder stance on building code - enrollment growth will be unpredictable.	Accuracy of projections		
WORKSHOP	Unpredictable	Don't Know		
WORKSHOP	-tone-deaf, bureaucratic resource management that loses sight of the big picture (giving our kids an excellent public education), instead hemorrhaging money on for-profit consultants with high fees, not-strictly-necessary administrative salaries and overpriced facilities arrangements. Money should go to making facilities safe in as streamlined a way as possible, without unnecessary bureaucracy and middlemen, but mostly to retaining and supporting excellent, top-notch teachers capable of implementing a nurturing, inspiring curriculum	Facilities	Academics	Other
WORKSHOP	The physical space is limiting. Parking and traffic flow are problems.	Facilities		
WORKSHOP	There is not enough physical space in Princeton to accommodate all the needs of all the children. There is one as particular risk are the high schoolers	Facilities		
WORKSHOP	We should prioritize building classrooms above all other improvements. Maybe a second building on campus if we ever need it, just like a college and many high schools.	Facilities		
WORKSHOP	We have to be careful not to overexpand and to be mindful of the limits of our operations budget - can't build expansion space that we can't afford to operate through our PPS	Facilities		
WORKSHOP	Threats include retirees in the community. They historically have not wanted any increase in taxes because they are not utilizing the school district. They have been very vocal and are a formidable force when referendums and funding are needed.	Lack of community support		
WORKSHOP	The word is out there that the PPS District is underfunded. People assume that the quality of education is deteriorating and people that can will turn to Charter and/or private school options which will further erode support for public school funding in this tax base.	Lack of community support		
WORKSHOP	We have more tax revenue coming in, state grants for expansion available, and pending disaster in the middle and high school. Inaction and further delays in passing a meaningful referendum will spend our top ranked school system and cause property values to fall. We will not please the minority constituent which wants no expansion just as the anti-consolidation of borough and township constituent was impossible to placate. Just make the plan and vote already. We already lost the Tharner property which will not be used by Avalon to build over 300 units making our problem even more dire. ugh!	Lack of community support		
WORKSHOP	Unwillingness to give PPS enough funds to deal with the increased enrollments.	Lack of community support		
WORKSHOP	Unsupportive residents who do not recognize the need to support our schools.	Lack of community support		
WORKSHOP	The biggest threat is well-organized and vocal opponents of investment in our schools, cloaked in the veneer of fiscal responsibility. I am thrilled to see a member of our school board (Daniel Darr) spreading misinformation. He claims we are "manufacturing a crisis" but the middle school is already well over capacity and frankly all the facilities are outdated.	Lack of community support	Facilities	
WORKSHOP	The community has little faith in the board and superintendent and has difficulty trusting the intentions.	Lack of community support		
WORKSHOP	The Charter School	Other		
WORKSHOP	The threat is strong unions working against the interests of the pupils	Other		
WORKSHOP	The current K-5 structure minimizes year to year change and lets young kids stay kids longer. I think this is a good thing.	Other		
WORKSHOP	The threat that the board's initiatives from two years ago, which had very little concern for taxpayers, will resurface.	Other		
WORKSHOP	The biggest threat to our school system is our current superintendent.	Other		
WORKSHOP	The obvious threat is overcrowding. When the classrooms are crowded the education will suffer. The priority needs to be providing spaces for education; and not specific expensive things.	Overcrowding/ class sizes	Academics	Facilities
WORKSHOP	too large of school size may decrease the class spirit, charter school impact.	Overcrowding/ class sizes	Student experience	
WORKSHOP	too many students per class	Overcrowding/ class sizes	Student experience	Academics
WORKSHOP	The more crowded a school is, the harder it is to center learning rather than factory-style test prep	Overcrowding/ class sizes	Student experience	
WORKSHOP	The more crowded the more issues may arise. Have staff and resources available to address issues and foster a sense of community in a population of growing diversity. More also mean more diversity. A lack of a culture of inclusion could be a threat.	Student experience	Overcrowding/ class sizes	
WORKSHOP	too high student:teacher ratio	Student experience	Academics	Overcrowding/ class sizes
WORKSHOP	The DU program undermines traditional neighborhood ES zoning and therefore a neighborhood identity to schools.	Student experience		
WORKSHOP	Threat to class sizes/attention to each student. My son's English day has 32 students. There is no way "each student known" is happening in a class like this - especially an English class. And there is no way the teacher can give adequate time/energy to each student's writing/development/growth	Student experience	Academics	
WORKSHOP	Threat of bussing out of neighborhoods	Student experience	Uneven enrollment distribution	
WORKSHOP	The biggest threat is that the increased enrollment is not divided appropriately among the schools. For example, JP has traditionally had lower enrollment from local population due to larger property sizes, as well as having relatively higher opportunity for expansion due to proximity of unbuilt space. However, the lack of crossing guards and subpar infrastructure make it difficult to propose busing large numbers of children to JP; it is arguably hard to defend that certain children in the district should be subjected to the toxic, outdated buses and lose valuable day time sitting in traffic jams to get to JP vs other schools. As such most of the increased enrollment will likely be distributed to CP and Littlebrook, which have limited room to expand, and of course later to JW and PHS which struggle with space limitations already.	Uneven enrollment distribution		

Tags	Count
Overcrowding/ class sizes	57
Other	44
Academics	29
Student experience	28
Lack of community support	26
Facilities	21
Accuracy of projections	3
Uneven enrollment distribution	2
Don't know	1



Princeton Public Schools Master Planning Process - Digital Workshop

What are your top 3 concerns for educational programming in Princeton Public Schools?

Answer Choices	Count	Percentage
#1	100.00%	141
#2	98.30%	138
#3	89.63%	126
Asswered	141	
Skipped	350	

Respondents	#1	Tags	#2	Tags	#3	Tags	Count	
1	growth is mostly to Littlebrook and very concerning	Class sizes	retain district students over Cranbury	Other	STEM curriculum	#	56	
2	1) overenrollment in MS & HS	Class sizes					56	
3	Breakth - from music to science, exposure to arts and culture	Student experience	Inclusion - support to include special needs learners with their peers	SPED	Access - giving kids a chance to try new things without pressure	Student Experience	33	
4	Equity and inclusion	Equity and inclusion	Racial inequality and emphasis of diversity in all forms	Equity and inclusion	STEM programming, maker spaces, learning by doing	Academics	22	
5	Equity and fairness issues across elementary schools.	Equity and inclusion	Excessive focus on new teaching tech, curriculum tweaking from year to year	Academics	Including and retaining a talented and high-performing pool of teachers.	Staff administrators	15	
6	Ensure equity, that all students can thrive.	Academics	Maintain excellence.	Academics	Address rampant student mental health issues.	Student Experience	11	
7	Adding sustainability = wellness into the curriculum in every area	Academics					11	
8	To keep the high level of achievement by our students	Academics	To keep enrichment activities such as the 8th grade Washington trip	Student experience	To keep class size low.	Class Sizes	11	
9	Adequate differentiation of the elementary + middle school level	Academics					11	
10	Antiquated grading practices	Student experience					11	
11	Arts programming	Student experience					11	
12	The DU class size	Equity and inclusion	The DU program having a 3 teacher structure	Equity and inclusion			11	
13	Better supervision/better supervision - hearing includes enrichment programs so students are learning (not messing around)	Academics					11	
14	Student well being	Student experience	Educational programs	Academics	Health and safety	Facilities - Indoor	91	
15	Build consistency partnerships with local rural/urban schools	Other					91	
16	Capacity at the high school	Class sizes					91	
17	Mass produced programming. One-size-fits-all overcrowdedness	Student experience	Strain on administrators + teachers, detracting individualized attention	Staff administration	Inconsistency, lack of communication	Other	88	
18	quality of educational provision	Class sizes	lack of sense of community/belonging with larger school sizes	Class Sizes			88	
19	the Princeton program is very confusing, are may not be reaching the talents that need	Academics	reduced pressure on students	Student experience	reduce unnecessary homework	Student Experience	83	
20	Special education	SPED	Quality of special education	Other	Need before-care and after-care on-site.	Other	77	
21	Special education	SPED	Professional development opportunities	Staff administration	Class size	Class Sizes	77	
22	Need for technology	Student experience	Need for more space	Facilities - Indoor	Need for more community interaction inside classroom	Other	77	
23	Overcrowding	Class sizes	Math in the DU program	Academics	Diversity	Equity and inclusion	77	
24	Special education	SPED	Too much focus on college preparation	Student experience	Taking advantage of all the resources available specifically County programs	Other	77	
25	Class size	Class sizes					77	
26	Class size	Class sizes					77	
27	Class size	Class sizes					77	
28	Class size	Class sizes					77	
29	class size (student per teacher ratio)	Class sizes					77	
30	Class size should allow students to take their learning to their questions about a given topic	Class sizes					77	
31	Class size. Expand STEM. Chill out zones for staff & students	Class sizes					77	
32	Strong math curriculum	Academics	Strong STEM opportunities	Academics	Strong high school college admissions counseling	Student Experience	77	
33	Class sizes	Class sizes					77	
34	Individual attention to each child	Class sizes	Educational engagement dives the district, not facilities	Academics	All children are important and have paths for engagement	Student Experience	77	
35	Diversity of student body, acceptance of multiple cultures	Equity and inclusion	Smooth continuation of school subjects between grades, i.e. math/physics	Academics	Smooth counseling for college preparation	Student Experience	77	
36	Class view/In space	Class sizes					77	
37	Classrooms	Class sizes					77	
38	Competing alternatives to AP's + accelerated courses	Academics					77	
39	not understanding the needs of each student	Student experience	Large classroom size inhibiting personalized teaching (and facilitating disruption)	Class Sizes	Highly dismissive of parents perspective; talk is of a collaboration b/w teachers and parents, but action is teachers and administrators ignoring parents.	Staff administrators	77	
40	Dealing with kids with learning disabilities is the wild west, dependent on the knowledge and resources of parents, and lack of the draw on the child's teachers	Academics	I wish I was a parent but parents have not received clear messages about how students should use it at home. This is a missed opportunity. Why invest in it if it doesn't pay off?	Other	Communication between teachers and parents is vital. Also, the scheduling of parent-teacher conferences at different times than report cards makes no sense. There is no mechanism to discuss issues raised on report cards.	Staff administrators	77	
41	Class sizes too low	Class sizes	Special needs being met	SPED	Extra curricular activities support	Student Experience	77	
42	Co-teaching classrooms. All. The. Time everywhere. Make this the norm	Academics					77	
43	Crowded buildings	Class sizes					77	
44	Damage done by factors in community who don't want to pay taxes, along w/ factors on the Board of Ed	Taxes/ Funding					77	
45	Our child is a 2nd grader. We've learned recently that public school performance (even Princeton) on standardized tests are lagging behind private and charter schools. Is this because the students are smarter in charter schools and private schools or because PPS are teaching to the bottom to make sure no one is left behind?	Academics	I worry that taking the burden of schooling other communities children is going to hurt my child.	Academics	I worry politics is getting in the way of basic education (sometimes).	Other	77	
46	Decrease pressure on overcrowding of middle school by getting public support for 5th grade school	Class sizes					77	
47	Academics	Academics					77	
48	Equity in class sizes in each grade	Class sizes	Social responsibility, social justice	Equity and inclusion	Giving children the tools to find their own path	Student Experience	77	
49	Lower class size	Class sizes	Scheduling to meet more needs.	Other	differentiating PD to suit changing needs.	Staff administrators	77	
50	Math not challenging for many students, they're bored	Academics	Keeping teaching staff energetic and committed when so many tenured teachers are obviously done with our children	Staff administration	Needs monitored by aides who are on their phones and ignoring the children.	Staff administrators	77	
51	Space	Facilities - Outdoor	Facilities	Facilities - Indoor	Employment trends	Class Sizes	77	
52	Strength of the academics for high-achieving children.	Academics	A better math curriculum	Academics	Adequate resources to maintain low student-to-teacher ratios. Prevent overcrowding.	Class Sizes	77	
53	Ease of transitions in W/PHS	Academics					77	
54	Educational excellence	Academics					77	
55	Elementary students are not getting enough movement or play time. Recess is frequently cancelled and gym at CP has been out back.	Student experience					77	
56	Eliminate out of district students in support of in district students & current facilities +2	Class sizes					77	
57	N/A	Other	N/A	Other	N/A		77	
58	Class sizes - especially for classes serving ELLs	Class sizes	Bitrigual staff for support services and instruction at middle and high school	Equity and inclusion	Physical space at PHS dedicated to English Learners & their particular needs	Facilities - Indoor	77	
59	Small class sizes	Class sizes	Inclusion of special needs students	SPED	Dual language immersion program	Equity and inclusion	77	
60	Enrollment. We are already at capacity	Class sizes					77	
61	Targated education for each type of student	Academics	High quality teachers	Staff administration	limited/appropriate class sizes	Class Sizes	77	
62	Over-capacity at LA, JV, and PHS	Academics	Number of students per classroom	Class Sizes	Decrease in overall quality due to the above factors	Academics	77	
63	large class sizes where students fall through the cracks	Class sizes	effective teachers	Staff administration	effective substitute teachers	Staff administrators	77	
64	Not enough staffing	Class sizes	Perhaps an overly aggressive approach at pushing "advanced" curricula particularly in math. Not everyone needs calculus, as opposed to statistics, very traditional style. Limited scope for individual learning	Academics	Academics	classroom environment can be suboptimal (old buildings)	Facilities - Indoor	77
65	too many program buckets in general, inclusive teaching	Academics					77	
66	Expanding PK	Academics					77	
67	Explore more regional collaborations with neighboring districts for DU & other magnet initiatives	Equity and inclusion					77	
68	Facilities crowding	Class sizes					77	
69	Freeze current programming levels - look at reducing some	Academics					77	
70	recessive homework is a number of classes	Student experience	comp co classes are in demand with not enough teachers; classes are large and teacher is overwhelmed	Class Sizes			77	
71	Getting buy in from the community to address huge enrollment needs/capacity	Taxes/ Funding					77	
72	Size of classes	Class sizes	Physical education space	Facilities - Indoor	Minimize disruption	Student Experience	77	
73	Class size	Class sizes	Meeting needs of students who excel above grade-level and are currently bored	Academics	Providing learning opportunities that keep pace with 21st century changes	Academics	77	
74	Co-teachers in classrooms.	Academics	Fewer but better paid and trained up instructional assistants.	Staff administration	Sufficient budget to maintain Princeton's top quality public school system.	Taxes/ Funding	77	
75	varied programs	Academics	Low teacher/student ratio	Class Sizes	Better communication between teachers and overall organization	Staff administrators	77	
76	Limited resources for health/ wellness programs	Student experience	Limited resources for ASD special assistance	SPED	Facilities challenges	Facilities - Indoor	77	
77	Address the educational needs of all students	Academics	The quality remains high	Academics	Focus on children's mental health	Student Experience	77	
78	It should be inclusive and centers not rote to repetitive	Student experience	Standardized tests should be ignored as much as possible	Student experience	The kids don't need screens or apps	Other	77	
79	Highly qualified teachers!	Academics					77	
80	How can DU go through JW + PHS at these over capacities?	Class sizes					77	
81	How will staff be made adequate for expanding capacity?	Class sizes					77	
82	If Cranbury goes back PPS loses and SAS (that lost SAS) (Don't know because their presence requires leaving space - expanding? We won't need to build).	Taxes/ Funding					77	
83	I'm concerned about my son's health + well being in such crowded facilities.	Class sizes					77	
84	I'm concerned our town will only focus on Cranbury when that discussion is now moot.	Other					77	
85	Growing class size	Class sizes	Math curriculum in MS	Academics	Cutting in-class support staff and teachers	Staff administrators	77	
86	Special Education needs are not being met	SPED	Too much time used for PD days, we do not need them, as per state law. 3	Staff administration	Cut the over abundance of superior positions, we have too many	Staff administrators	77	
87	class size	Class sizes	educational programs	Academics	Language barriers	Other	77	
88	small classes	Class sizes	maintaining neighborhood schools	Facilities - Indoor	art, music and STEAM enrichment	Academics	77	
89	Keeping DU	Equity and inclusion	keeping our arts programming	Academics	Differentiation (challenging all kids at their level and helping them succeed)	Academics	77	
90	Individual learning opportunities "every child know"	Academics					77	
91	Inquiry project based learning	Academics					77	
92	adding STEM classes (and keeping up with modern curriculum in this area)	Academics	Attracting/retaining excellent teachers	Staff administration	Maintaining academic excellence (seems to be moving lower in priority for PHS)	Academics	77	
93	Developing a culture of striving and excellence among faculty	Other	Hiring, rewarding, and retaining the most knowledgeable, effective, and inspiring teachers	Staff administration	Improving and expanding the buildings and classrooms.	Facilities - Indoor	77	
94	over crowded classes	Class sizes	lack availability to students of classes which are full	Class Sizes	dropping courses/courses to reduce teacher/resources	Student Experience	77	
95	Kids in sports don't miss class!	Student experience					77	
96	Kindergarten should not teach academics. Return to play based learning.	Student experience					77	
97	Lack of 5 due to 2Ks + Charter School expansion	Taxes/ Funding					77	
98	Academic Success	Academics	Sports programs	Student experience	Enrichment opportunities- music/arts	Academics	77	
99	Lack of outside time	Equity and inclusion	Differentiation	Other	Forethought - too many programs and initiatives are rolled out on the fly with seemingly little thought into how everything fits together or how it will work in the long-term	Academics	77	
100	Inclusion - I'd like to see less sicking and have students with diverse talents and needs brought together	Equity and inclusion					77	
101	Lack of use of tech + innovation	Academics					77	
102	High expectations for all students including those middle-achieving and high-achieving	Student experience	Fewer co-ops/competition for spaces in sports and other special programs	Student experience	Don't cater to parents who only want their child to get into the ivy/competitive colleges	Student Experience	77	
103	Too many kids per class	Class sizes	Too big to have a community feel in WEST Windsor. Feels almost like a city and not a town	Other	less attention for each student	Student Experience	77	
104	Longer physical outdoor play time	Student experience					77	
105	Maintain neighborhood schools.	Student experience	Better gym and sport facilities.	Facilities - Indoor	Overcrowded classrooms.	Class Sizes	77	
106	Continued investment in top teachers, administrators, and staff.	Other	Investment in the physical plant (indoor and outdoor facilities)	Facilities - Indoor	Providing top notch education (from remedial to accelerated) and ensuring school-life balance for our students.	Academics	77	
107	Students have almost no control over allocation of their own time: they are at the mercy of teachers.	Student experience	Faculty and administration are unwilling to try less expensive patterns for teaching and learning, in particular online courses.	Academics			77	
108	Class size	Class sizes	Special education + inclusion	SPED	Adequate staffing	Staff administrators	77	
109	Increased class size	Class sizes	Less opportunities like residencies and trips	Student experience	Less of a community feeling	Student Experience	77	
110	Class size	Class sizes	STEM programming	Academics	Maintaining the neighborhood school	Student Experience	77	
111	Maintaining small ground academic instruction	Class sizes					77	
112	Maintaining good teachers	Staff administration	Maintaining the arts and STEM	Academics	Dedicating enough time to subjects and classroom education time	Academics	77	
113	Make sure facts about Cranbury are understood	Other	Oversepending	Taxes/funding	Attention to being "wedge"	Equity and inclusion	77	
114	Loss of academic focus	Academics	a broad curriculum including art, music, etc.	Academics	students being challenged and opportunity given strengths / weaknesses	Staff administrators	77	
115	Quality of teachers and support they can recall	Staff administration					77	
116	PHS educational program driven by super achievers, and to lesser extent by students with significant obstacles to achievement, and not by a vision for the whole, causing alienation and resignation by some, class and ability, stress, lack of engagement, and failure to develop community/coop, engineering, character skills.	Academics	Need for more learner centered approach, knowing every child's strengths and weaknesses and responding to both.	Student experience	In the end, it's all about good teachers. The educational program should provide opportunities for teachers to innovate and succeed, so as to attract and retain excellent educators, and eventually, teachers who are not suited for the program are able to adapt should that ever be encouraged to stay.	Staff administrators	77	
117	FACE AND BALANCE-HAVING A HEALTHY PHYSICAL, MOTIVATIONAL, ACADEMICALLY-STUDENT BODY	Student experience	STUDENTS ABILITY TO SUCCEED IN THEIR CLASSROOMS	Academics	MARKING ALL CLUBS ACCESSIBLE AND EQUITABLE FOR ALL	Student Experience	77	
118	Mental health	Student experience					77	
119	class size	Class sizes	support staff provided	Staff administration	technology	Other	77	
120	More arts education experiences for children	Student experience					77	
121	more collaborative/group learning and spaces to do that in	Facilities - Indoor					77	
122	More recess phys ed time	Student experience					77	
123	Movement/outdoor opportunities for all	Student experience					77	
124	Moving quickly to enrollment to growing fast - need to address	Class sizes					77	
125	Not enough resources for struggling students	Academics	Large classes inhibits learning	Class Sizes	Not enough individual attention to each student's needs.	Student Experience	77	
126	High ratio of top-notch teachers to students, offering non-mediated, engaging instruction in ELA, STEM, art, and music, and gym	Academics	Supportive, nurturing systems to equalize student opportunities across any socioeconomic divide	Equity and inclusion	Nurturing, person-oriented, inclusive school atmosphere that supports our whole community.	Student Experience	77	
127	Need to explore technology if it's a digress!	Student experience					77	
128	No more referendums used transparency is achieved	Other					77	
129	Having to limit sections and choice of electives in order to keep required class sizes at reasonable levels.	Student experience	Classes that are too big.	Class Sizes	Classes held in unattractive, uncomforable conditions.	Class Sizes	77	
130	Overcrowding	Class sizes	Aging buildings	Facilities - Indoor	Lack of teachers.	Other	77	
131	Ability to attract top quality teachers	Other	Ability to use space most effectively for communication	Facilities - Indoor	Overcrowding leads to decline or adverse selection in students leads to decreasing course offerings, resulting in a general lack of transparency	Class Sizes	77	
132	Impact of DU and why it even exists.	Other	District is scaling back services for our neediest students.	Other		Other	77	
133	Class size	Class sizes	Classrooms and spaces that are conducive to learning	Facilities - Indoor	Having places for more electives and not just the classrooms for those traditional subjects deemed most important like	Student Experience	77	
134	Outdated education program at the high school	Academics					77	
135	children with IEPs	Academics	keeping the diversity of offerings	Academics	keeping pace with the changing workplace needs	Other	77	
136	School communications of the curriculum programs by grade followed in the school regardless of attending PPD meeting or not; should be available in class paper and followed by grade.	Academics	Consistency across the teachers in content covered /methodologies used to educate/grading should be maintained	Academics	More GAT programs, STEM programs that are practical and applicable to real-world. Field trip showing the applications.	Academics	77	
137	quality of education - already erratic	Academics	tenured teachers who are not passionate about teaching or students	Staff administration	the amount of \$ that goes toward administrative costs, special need programs and the charter school that is taken away from ensuring excellent teachers and facilities in an extremely highly taxed town. It's like the lobbyists dictating the laws of our country rather than doing what's best for the citizens in general.	Taxes/ Funding	77	
138	quality teacher	Academics	quality lessons/real world applications	Academics	teaching social emotional learning	Academics	77	
139	Continuing to maintain the high quality of learning resources	Academics	Class size	Class Sizes	Safe and modern learning spaces	Facilities - Indoor	77	
140	include	Equity and inclusion	Co-teaching	Staff administration	Teaching to individual strengths	Academics	77	
141	many more so many bad examples from the news now devastating only can to reformers	Equity and inclusion	Staff and teachers provide equal opportunity to every student	Student experience			77	
WORKSHOP	High performance	Academics	High quality	Academics	Tailored education to the children	Student Experience	77	
WORKSHOP	Evidence based instruction and delivery of special ed with a goal toward achieving maximum independence for those students.	Academics	Unseen language arts and world language instruction	Academics	Over reliance and misuse of electronic devices and	Student Experience	77	
WORKSHOP	support for children that are bored by current curriculum (i.e. teaching arithmetic and smaller class sizes so each child can get what they need)	Academics					77	
WORKSHOP	What STEM looks like for kids not in environment	Academics	Budget issues and poor district planning resulting in technology gaps	Taxes/funding	Potential for budget issues to impact breadth of curriculum	Taxes/ Funding	77	
WORKSHOP	Choosing good math programs that have been tested and are appreciated by staff + all levels (is supposed to							

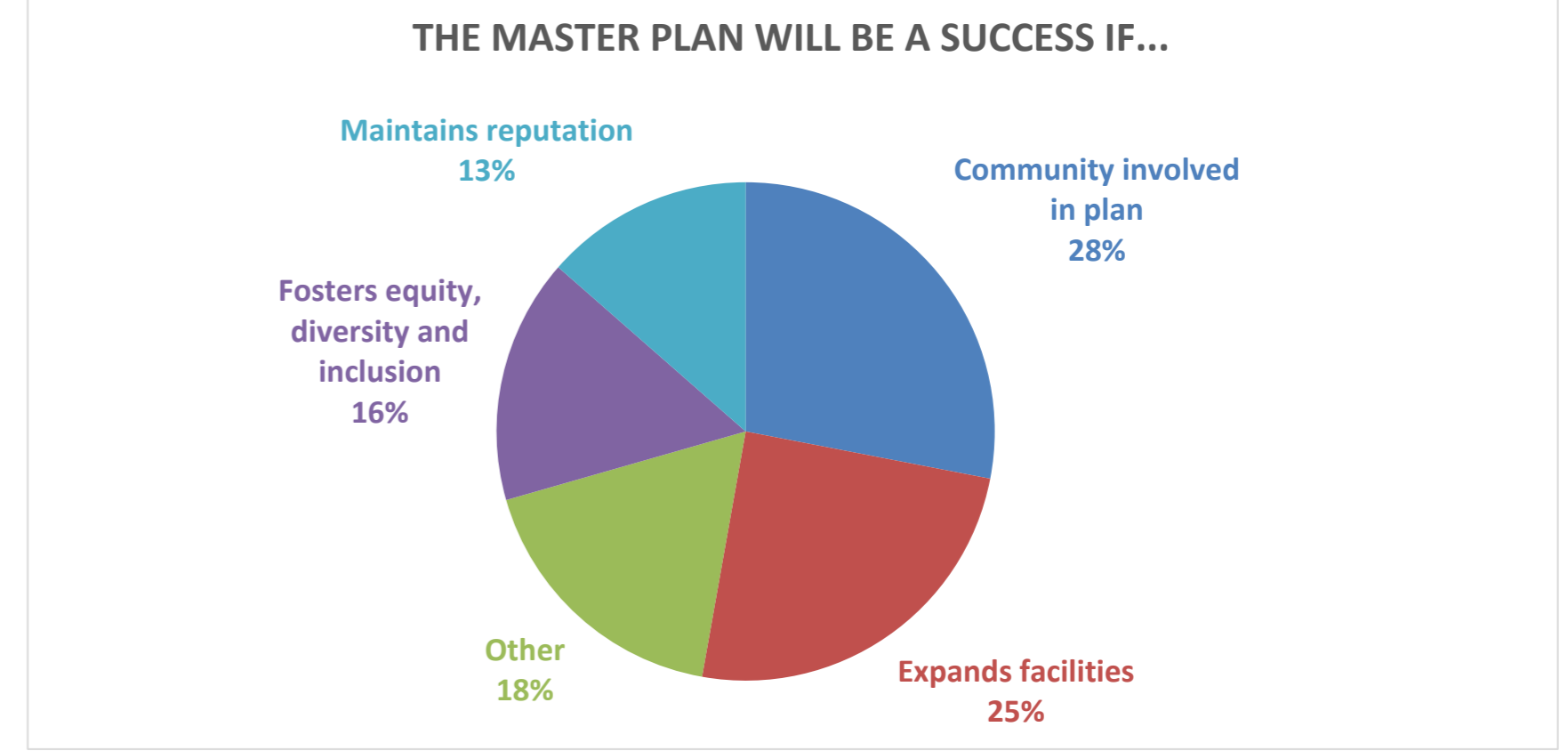
Princeton Public Schools Master Planning Process - Digital Workshop
 The 2020 Princeton Public Schools Master Plan will be a success if...

Answered
 Skipped

110
 361

Tags	Count
Community involved in plan	60
Expands facilities	53
Other	38
Fosters equity, diversity and inclusion	34
Maintains reputation	29
Recommended investments are supported by information	25
Addresses student needs	18
Don't know	1

Respondents	Responses	Tag 1	Tag 2	Tag 3
-------------	-----------	-------	-------	-------



Respondents	Responses	Tag 1	Tag 2	Tag 3
1	all members of the community feel like they have contributed and been heard.	Community involved in plan		
2	we work together to welcome diversity, and focus on sustainability and flexibility of the plan for future generations.	Fosters equity, diversity and inclusion		
3	Address the concern of residents that their voices will be heard and considered.	Community involved in plan		
4	All children are included and cared for such that learning is abundant, not chore.	Addresses student needs		
5	all students in Princeton are well served by the schools and the schools are fostering a sense of joy in education and appreciation for the arts and all cultures.	Addresses student needs		
6	Nice one what the master plan is.	Don't know		
7	Gails new footprint and expands curriculum while limiting rental real estate.	Expands facilities		
8	It is abandoned.	Other		
9	...we plan effectively and budget appropriately for the known future.	Recommended investments are supported by information		
10	everyone is on board. Stop the infighting.	Community involved in plan		
11	It eliminates the outcome bias, presents the complete set of facts (not those compatible with the bias). If you don't see the bias, ask.	Other		
12	We successfully manage the overcrowding.	Other		
13	Maintain or increase success of students and reputation of school.	Maintains reputation		
14	PPS remains as the top public school district in New Jersey through the usage of more co-teaching models, inclusion of special education students and the promotion of foreign languages and an international perspective.	Fosters equity, diversity and inclusion		
15	we can meet the needs of ALL students	Addresses student needs		
16	The school attracts and retains the best teachers, the local community continues to predominantly choose public schools over private or moving to other districts, students thrive and graduate with emotional, social, and academic skills	Maintains reputation		
17	listen to people of color, create inclusive and supportive spaces and gratitude for our wealth	Fosters equity, diversity and inclusion		
18	The board chooses a plan that data can support. Demographic projections from presentation support expansion at MQHS.	Recommended investments are supported by information		
19	Use money effectively to benefit kids, and the bring communities together, not to benefit personal agendas	Recommended investments are supported by information	Addresses student needs	
20	More communication is needed about the issues, and strategies to help it. We need to enlist more than just parents. We need to get financial support from the economy.	Community involved in plan		
21	Locs share housing units are built.	Other		
22	We prioritise fixing the problems that exist before spending revenue on expanding so we have shiny new additions to antiquated original structures	Recommended investments are supported by information		
23	All children reach their maximum potential in a fully inclusive setting.	Fosters equity, diversity and inclusion		
24	All stakeholders are consulted- especially those who may have difficulty attending meetings; and responding to online surveys	Community involved in plan		
25	Funding is approved to improve PPS schools.	Other		
26	has more areas for 21st century learning	Expands facilities		
27	Space is found for the growing student population. What if we could get rid of the Charter School. That space could become a 5-8 Middle School and the High School could take over the existing PMS for their space.	Expands facilities		
28	It is a way to address educational quality initiatives with the fiscalist in enrollment; establishes a stronger voice within the Municipality in terms of impact of new developments on the school district.	Maintains reputation	Recommended investments are supported by information	
29	There is a focus on creating thinking through of the issues rather than just throwing money at them. Allow all concerned to share their thoughts/contributions.	Community involved in plan	Recommended investments are supported by information	
30	we focus on the needs of creating a better learning environment rather than the bells and whistles.	Maintains reputation		
31	It truly allows the District to actualize it's mission and objectives.	Maintains reputation		
32	The 2020 Princeton Public Schools Master Plan will be a success if Princeton maintains its reputation as a town with excellent schools, a place where families are happy, have made good friends, meaningful relationships, feel connected into the world, confident, and successful in their careers. We need more resources directed to instruction (we should be hiring teachers, not laying them off). Capacity should be increased, but please no vanity projects. There needs to be transparency about how we are going to pay for the annual maintenance of any new facilities without depleting money for educational programs.	Maintains reputation	Expands facilities	Community involved in plan
33	Class sizes are kept small as possible and you stop messing around with ridiculous math curriculum that don't prepare our children adequately	Expands facilities		
34	it gets support of the whole town, not just parents	Community involved in plan		
35	schools are more balanced in terms of class sizes and demographics	Expands facilities		
36	it ensures the physical resources and human resources are adequate to support the increasing student population.	Expands facilities		
37	A wider group of people are engaged	Community involved in plan		
38	Uses already high taxes for classrooms and not for consultants. Administration is already paid high enough.	Other		
39	More money is put towards building improvements, adding programs such as direct education, increasing P.E. to 5 times a day, GETTING KIDS OUTSIDE MORE!	Expands facilities	Recommended investments are supported by information	
40	student plan away, strategic, advertising and campaigning plan, bid job to reputable construction company and diligently oversee project.	Recommended investments are supported by information		
41	It allows for necessary growth at a reasonable cost	Recommended investments are supported by information	Expands facilities	
42	Students are at the center of all decisions	Community involved in plan		
43	A supportive environment and educational excellence are upheld for all children.	Fosters equity, diversity and inclusion		
44	It creates spaces for all teachers to teach and all kinds of students to learn.	Expands facilities	Fosters equity, diversity and inclusion	
45	You hear out parents and campers concerns and ideas	Community involved in plan		
46	We have a clear next goal: get buy-in from all stakeholders. don't ask for more than is necessary for our kids and staff to be successful. take pride in what our schools have achieved and will continue to achieve, make this feel like a community project and that we all have ownership over the success of all our kids—they all deserve to be here and benefit from educational excellence.	Community involved in plan		
47	All students are supported are embraced by their entire school. parents also see supporters, trusting the environment from how their children in school.	Fosters equity, diversity and inclusion		
48	If people buy into it.	Community involved in plan		
49	We spend the taxpayers' money wisely. We educate the students of Princeton taxpayers and not Cranbury or teachers' children. We don't have kids in buildings with mold. We don't have additional parking, but we address the parking problem in a creative way that acknowledges that we need to evolve vs vs individual cars.	Community involved in plan	Recommended investments are supported by information	
50	People really were creatively solving current issues and not just band aid solution finding. If the community and parents were allowed to help more... if all staff and community members believed in each other, then we could do it to a high standard and worked towards that goal.	Community involved in plan		
51	Everyone truly feels heard	Community involved in plan		
52	it considers the year 2050 in it's planning and builds to adapt - specifically read "One World Schoolhouse"	Fosters equity, diversity and inclusion		
53	Security is improved at all schools, infrastructure is updated and teachers and students are happy with the space they have to teach and learn in	Expands facilities	Fosters equity, diversity and inclusion	
54	it gets us halfway to 2050 that has the next steps to deal with regress and rework.	Other		
55	There is cohesion, communication, collaboration and shared vision	Fosters equity, diversity and inclusion	Community involved in plan	
56	Maintain great teachers	Expands facilities	Recommended investments are supported by information	
57	Provide essential building updates	Expands facilities		
58	Don't get caught up in facts that aren't that important but are expensive	Expands facilities		
59	Identify 3 and 10 year plans for accommodation of anticipated district changes	Expands facilities		
58	it keeps involving students.	Community involved in plan		
59	Everyone is involved including parents, students, staff, teachers and community and get a chance to voice their concerns and ideas and be heard. Final plan addresses those ideas and concerns.	Community involved in plan		
60	planned well such that the impact is distributed and even plan to have another division for newly growing communities to distribute impacts	Expands facilities		
61	The right stakeholders are invited and work w experts	Community involved in plan		
62	Our kids get a great public education and stay happy about learning and about life.	Maintains reputation		
63	we focus on community, relationships, sense of place, a strong (and visible) extension in a unique way, interests, involvement.	Fosters equity, diversity and inclusion		
64	HEALTHY KIDS WITH ENGAGED TEACHERS DOING AWAY WITH AP EXAMS AND STANDARDIZED TESTS.	Fosters equity, diversity and inclusion		
65	MEET THE KIDS WHERE THEY ARE.	Fosters equity, diversity and inclusion		
66	the administrators engage the community and are willing to think creatively	Fosters equity, diversity and inclusion		
67	There is increased transparency between the board and taxpayers and fewer outside consultants are employed, and costs are kept to a minimum.	Community involved in plan	Recommended investments are supported by information	
68	The board has led at these tasks in the recent past and the voters rightly rejected the proposals and are now insisting on greater transparency and realistic plans for improvement that do not burden taxpayers. The previous plan for the district to purchase Transit Road thereby taking it off the tax rolls will while employees are going expensive professionals consultants to drum up unnecessary ways to spend money will on more taxpayers' minds in future elections.	Community involved in plan	Recommended investments are supported by information	
67	The Old class size is less than 20 students per class	Fosters equity, diversity and inclusion	Maintains reputation	
68	it shows a consistent way forward to overcome the limitations of the current infrastructure while also ensuring that PPS is a very attractive place for master teachers to work	Other		
69	the kids have fun	Fosters equity, diversity and inclusion		
70	it calls for significantly increased PPS funding, and if during the creation of the plan enough support is created so that the plan is implemented via referendum or local legislation.	Community involved in plan	Recommended investments are supported by information	
71	it improves on the spaces and activities available to students and staff.	Expands facilities		
72	My children are safe and the district continues to rank high academically. We want our children to learn everything they would learn at a private school. We have the talent in our public teachers and community.	Maintains reputation	Fosters equity, diversity and inclusion	
73	It deals not just with students in schools, but also students in classrooms and other spaces.	Maintains reputation		
74	There are more done parties for seniors on BOC meeting nights and election days	Other		
75	Widened is the priority	Fosters equity, diversity and inclusion		
76	it prepares PPS to provide excellent education to all of its students by 2030	Maintains reputation		
77	it maintains excellence, curbs outlandish spending, and paves a way to terminate the send/receive relationship with Cranbury.	Maintains reputation		
78	There is buy-in from teachers, parents, and the larger community	Community involved in plan		
79	it can enhance the learning of all students, not just the children of Princeton professors	Maintains reputation		
80	We all work together.	Community involved in plan		
81	the administration is able to hear the voices of the community and unite with them	Community involved in plan		
82	Everyone is included	Community involved in plan		
83	Financial flexibility is increased. Without that, all else is moot. After that, the quality of the teaching has to be preserved. Without that, all else is also moot. Then, growth needs to be strictly controlled in coordination with town council.	Recommended investments are supported by info	Maintains reputation	
84	We dramatically improve our facilities and capacity.	Expands facilities		
85	A long view is taken.	Recommended investments are supported by information		
86	students feel safe and prepared for the next step in their education	Fosters equity, diversity and inclusion		
87	it acknowledges that Princeton children must have priority in use of space over children from Cranbury.	Other		
88	our teams don't go up.	Other		
89	All students have classrooms and common spaces where they enjoy learning and can work on group projects, study independently and have spaces to build community (for extracurricular activities and just hanging out with friends)	Expands facilities		
90	the result is adequate, flexible space to educate existing and future students while simultaneously reducing the budget SIGNIFICANTLY.	Expands facilities		
91	Taxpayers agree to adequately fund it	Community involved in plan		
92	Remains flexible, since all these numbers are only educated guesses	Recommended investments are supported by information		
93	People are flexible and willing to commit to a change	Community involved in plan		
94	There are enough classrooms and teachers to maintain a low student/teacher ratio.	Expands facilities		
95	All the stakeholders can get to yes on core desired outcomes, values, priorities, and roles - and find a way forward with integrity and vision, as simply as possible.	Community involved in plan		
96	a reasonable budget is in place, staffing needs are met, and parents are more supportive of schools.	Maintains reputation		
97	Focus on keeping outside consultant, architect, and maintenance costs low.	Other		
98	The funding can be raised and we don't get caught in the weeds of red tape.	Other		
99	protection allocates enough funds, the schools are falling apart. Mold in classrooms, dirty, prison looking, old, stagnant, water doesn't work in bathrooms, it smells STINKY, but an inspirational place to learn.	Expands facilities		
100	New developments are assigned to Johnson Park where overcrowding is less of an issue.	Expands facilities		
101	Costs are reduced	Other		
102	You get the community behind a plan to address the issues identified in the presentation.	Community involved in plan		
103	it addresses the issues facing our district comprehensively but cost-effectively while prioritizing students' education.	Maintains reputation		
104	students are learning joyfully	Fosters equity, diversity and inclusion		
105	We get the appropriate funding	Other		
106	it puts students first and not a fancy design. It recognizes that the district is only as good as its teachers, and supervising and evaluating are two different things.	Fosters equity, diversity and inclusion		
107	the community can be convinced of our need, not panic so much that they pull children from PPS (go private or drive or to Charter), have faith in our vision, and support it with their tax dollars	Community involved in plan		
108	it's honest, fair, and addresses the NEEDS OF STUDENTS. Huge emphasis on NEEDS and STUDENTS.	Fosters equity, diversity and inclusion		
109	we have enough classrooms	Other		
110	the board and administrators listen to all involved - the students, parents AND teachers	Community involved in plan		
111	we can come together and support one another	Community involved in plan		
112	You really find out what the schools really need	Community involved in plan		
113	...the community begins taking an active role in educating our students through presentations, guest speakers and offsite visits.	Community involved in plan		
114	we work together as a team.	Community involved in plan		
115	You actually cared about your staff	Other		
116	We get enough funding to repair the physical buildings and make improvements to the already existing building 'issues'	Expands facilities		
117	...it manages to keep students as the center of focus — students as individuals. Right now, the trends are shifting to where they're regarded as groups. This undermines their education and the long term success of the district.	Fosters equity, diversity and inclusion		
118	It improves student engagement and success	Maintains reputation		
119	— a miracle occurs	Other		
120	It gives more than lip service to diversity and inclusion, diving deep into its very real, historic and contemporary problems with serving Black and immigrant students and meeting time, money, space, and staff to helping these important members of its community thrive.	Fosters equity, diversity and inclusion		
121	It works within the nearly 100 million dollar budget of PPS and doesn't raise teacher rates or mandated or imposed.	Other		
122	Makes the enrollment challenge in a way that promotes a better overall educational experience for our students.	Maintains reputation	Expands facilities	
123	It reduces the tax burden on Princeton households over the next decade. It reduces school greenhouse gas emissions 75% by 2030.	Other		
124	Electric officials are accountable to taxpayers	Other		
125	Community of non-school going people being supportive as they had the opportunity for their children in the past.	Community involved in plan		
126	It honored what is best for the student experience.	Addresses student needs		
127	It is done with complete transparency and input from the public.	Community involved in plan		
128	kids are put first	Addresses student needs		
129	it prioritizes student needs in relation to what can realistically be accomplished	Addresses student needs		
130	the user safe and functional spaces and high quality resources to serve ALL students.	Expands facilities		
WORKSHOP	The education program and facility would accommodate the growing community of learners + students, regardless of the income level, while keeping up with the 21st century (plans, up to digital education programs + do well to prepare all students to compete in college + universities.	Expands facilities	Fosters equity, diversity and inclusion	
WORKSHOP	We can establish a plan to successfully deal with the number of students and thus complete the renovation/expansions within the budget. We also need to have a plan which reduces our fossil fuel consumption as much as possible. It's our responsibility!	Maintains reputation	Expands facilities	
WORKSHOP	Class sizes can stay no larger than 25.	Maintains reputation		
WORKSHOP	ALL CHILDREN'S CLASS SIZES DON'T EXCEED 25. programming is not eliminated due to space constraints. The budget remains one that the town we deserve.	Expands facilities		
WORKSHOP	We fight a way to allocate our resources in a cost effective, and socially fair model, and do with a sustainability framework. It's not about being the best, but about doing the most with what we have.	Fosters equity, diversity and inclusion	Recommended investments are supported by information	
WORKSHOP	It includes a robust school transportation plan for all students living further than 1.5 mile from the school they attend that factors in overall community transportation needs, infrastructure and traffic patterns. The existing lack of buses for students nearly 2 miles from their school is difficult for working parents and creates an unsafe, environmentally unsustainable solution.	Other		
WORKSHOP	Let taxpayors help educate. Show photos/videos of our kids. Post reasoning that is clear + w/d to respond to loud objections. Cranbury, add floors. Need for 5-6 school etc.	Community involved in plan	Expands facilities	
WORKSHOP	Thanks for making expansion to schools for increasing populations. This kept class size down. I think keeping DU an advanced Spanish class only was a great idea!	Expands facilities		
WORKSHOP	Centralized parking - using extra space at VP make? Location for staff (+PPS students who drive)/w/minute buses run to the schools to alleviate parking shortages at all the schools + Valley Road.	Expands facilities		
WORKSHOP	Princeton tax payers should not be responsible for paying for the relentless expansion of special needs programs that only serve to attract more special needs students.	Other		
WORKSHOP	New buildings. Town will never shrink	Expands facilities		
WORKSHOP	More collaborative + less - leaving spaces. Dramatically improve our poor outdoor athletic fields.*	Expands facilities		
WORKSHOP	Make sure the planning for new classrooms is good for education. Open spaces have not been a success!	Expands facilities		
WORKSHOP	Please consider the needs of student athletes - more fields (Turf)	Expands facilities		
WORKSHOP	Let's not think of building a school extension that costs more than what private firms would spend! The previous plan was outrageous!!	Recommended investments are supported by information		
WORKSHOP	Maintenance categories of facilities. Heating + cooling the works. Fixing fields + turfed? Turfed?	Expands facilities		
WORKSHOP	Cars + parking (staff) what can be done to reduce the above? Teachers don't need cars all the school, when do they park out of the town (and take a bus in)	Other		
WORKSHOP	The district collaborated with the Town (and university?) to create a lighted athletic field that does not adversely impact residents/taxpayer	Expands facilities		
WORKSHOP	Our facilities become more operationally efficient. A healthier environment for our kids and more efficient use of \$.	Expands facilities	Recommended investments are supported by information	
WORKSHOP	Consider remote parking for staff rather than building more parking lots. Incentivize staff to use remote parking.	Expands facilities		
WORKSHOP	We can reallocate the money to do the needed changes! Convince people of the needed changes. We can build a new school + add to the existing schools. Build parking garages. Find other things that were successful in the money.	Community involved in plan		
WORKSHOP	The middle school and high school are already above capacity. According to the projections, they will be double capacity soon. We need to build ANOTHER school. (or 2). Perhaps we should tear down the current Valley Rd. building and build a large, new, multi-story wonderful building! I know this will cost a lot but I see the need to figure out how to get the money from where other towns get their money??	Expands facilities		
WORKSHOP	We make future-looking large scale changes to the existing infrastructure rather than taking a reactionary "band-aid" approach. (eg adding a 5-6 school or adding an elementary school (Lafayette Rd) and expanding elementary to JH in the potential acquisition of some of the Choir College property should also be pursued as forcefully as possible - even in many generations opportunity)	Expands facilities		
WORKSHOP	We designate a separate building for PK-3 students to help the overcrowding.	Expands facilities		
WORKSHOP	If you engage students - what do they say + know? There was nothing presented that was from their views - survey them. And parents too please consider some surveys. 2) Ready to make a bet? Ideas are considered. Put a smaller sales not expanded - we need more. 2) Build a parking garage + bus teachers. 3) University assets as a resource. 4) Saturday school	Community involved in plan		
WORKSHOP	2) focus on common spaces (libraries, ballrooms & gym) and classrooms space. 3) addresses needs for increase in total staff @ facilities. 4) just teachers (admin staff, aides, etc.) 4) addresses critical improvements in technology (not just devices but also access to wifi in & out of the classroom)	Expands facilities		
WORKSHOP	There is a realistic plan to ensure PROPER MAINTENANCE of ALL FACILITIES.	Expands facilities		
WORKSHOP	The facilities from tables, sinks, to the bigger MAINLY actually FUNCTION.	Expands facilities		
WORKSHOP	1) Teachers teach. 2) facilities are maintained. 3)they care. 4) we had children well.	Maintains reputation		
WORKSHOP	Community members, staff and especially administrators understand the connection between facilities and the well-being of students and teachers	Community involved in plan		
WORKSHOP	1) We make long-term and meaningful changes to our facilities that are capable of going w/ our population and w/ daily or crying teaching techniques and flexibility. 2) Accepting them in a fiscally responsible way that encourages right + participation from the public w/o be overwhelmed by negativity.	Expands facilities	Recommended investments are supported by information	
WORKSHOP	Redesign elementary schools + build wing at Johnson Park.	Expands facilities		
WORKSHOP	It addresses growing enrollment in terms of common space in addition to classroom space (ie gym, cafeteria, auditorium). Highest priorities are middle school. HS (ie also need to consider need for collaboration in schools - 21st century learning).	Expands facilities		
WORKSHOP	The middle school and high school capacity is increased, more project based learning is incorporated, "average" students are valued - for example not everything has to be a specialized program for only the "exceptional" student. The facilities are more conducive to learning - natural light, bright, HVAC, etc.	Expands facilities		
WORKSHOP	The school system has enough TURF FIELDS to accommodate all teams w/ sharing fields, mixing class in order to address scheduling the one turf field + neighborhood HS covering w/ distances.	Expands facilities		
WORKSHOP	The high school + middle school facilities are not an embarrassment to the community in future detrimental to property rates	Expands facilities		
WORKSHOP	I would make text + graphics larger. Maybe the university would be willing to offer an auditorium for future meetings for better sound quality.	Expands facilities		
WORKSHOP	Raise infrastructure standards to meet 21st century technologies. Continue high quality education. Expand DU access to middle + high school.	Maintains reputation	Fosters equity, diversity and inclusion	
WORKSHOP	Maintain/enhance outdoor space. Become carbon neutral.	Expands facilities		
WORKSHOP	Our Princeton kids are happy, curious, have healthy spaces to learn in.	Fosters equity, diversity and inclusion		
WORKSHOP	We modernize our facilities to meet 21st century needs. Making sure our students & teachers are educated + teach in safe, secure and pride-worthy buildings.	Expands facilities		
WORKSHOP	Public transportation	Other		
WORKSHOP	Students achieve both academically and in extracurricular activities while being proud that they have made some sacrifices in terms of facilities so that their poorer friends and friends-enemy neighbors have not been deprived out of Princeton by taxes.	Maintains reputation	Other	
WORKSHOP	You were able to accommodate all our kids while maintaining quality and attention provided students, while not making Princeton completely unaffordable. Tall order, thank you!	Maintains reputation		
WORKSHOP	It took into account the financial burden of families in Princeton to support all students in PPS	Other		
WORKSHOP	Multiple meetings allow for discussion of several options for addressing enrollment growth as JAW-PMS, and these are presented that are plausible, well explained, and with realistic costs.	Community involved in plan</		

Princeton Public Schools Master Planning Process - Digital Workshop

If you would like to be contacted about future surveys or forums, please enter your information below.

Answer Choices	Responses	
Name:	100.00%	38
Company:	0.00%	0
Address:	0.00%	0
Address 2:	0.00%	0
City/Town:	0.00%	0
State/Province:	0.00%	0
ZIP/Postal Code:	0.00%	0
Country:	0.00%	0
Email Address:	100.00%	40
Phone Number:	0.00%	0
Answered		40
Skipped		451

Respondents	Response Date	Name:	Tags	Company:	Tags	Address:	Tags	Address 2:	Tags	City/Town:	Tags	State/Province:	Tags	ZIP/Postal Code:	Tags	Country:	Tags	Email Address:	Tags	Phone Number	Tags
-------------	---------------	-------	------	----------	------	----------	------	------------	------	------------	------	-----------------	------	------------------	------	----------	------	----------------	------	--------------	------

REDACTED