



# 2019 / strong schools. safe schools. successful students.

MAY 14

EPVOTE2019.ORG



EDEN PRAIRIE SCHOOLS

## Eden Prairie residents are proud of their schools.

To help maintain Eden Prairie Schools' commitment to inspiring each student every day, district residents are being asked to vote May 14, 2019 on a one-question bond funding proposal to improve school learning environments and enhance school safety through construction projects at all schools.

## A COMMUNITY VISION FOR STRONG, SAFE SCHOOLS AND SUCCESSFUL STUDENTS

Eden Prairie Schools staff, parents and community members spent the last three years developing a long-term vision for academic programs and facilities to support student learning. Based on that public input, research and planning, the School Board is asking voters to consider one referendum question on May 14. If approved, it would:



**Ensure more children are prepared for kindergarten** by moving our 4-year-old preschool programs into all elementary schools, thus expanding access and strengthening the transition from preschool to elementary school.



**Improve the middle school learning experience** by moving 6th graders from the elementary schools to a more age-appropriate environment at a grades 6-8 middle school tailored to their academic and developmental needs.



**Support greater academic achievement** by redesigning classrooms across the district to support more flexible learning environments and personalized learning. Combined with our exceptional staff, these improvements would help students develop in-demand skills like collaboration, creativity, communication and critical thinking.



**Improve safety and security across all schools** by adding protective glass, lock-down equipment, internal communication systems and additional exterior security.

# PARENT APPROVAL RATINGS\*

**99%**

**believe our community receives a good value on its investment in our schools**

**98%**

**rate our quality of education as excellent or good**

**97%**

**rate our teachers as excellent or good**

**96%**

**trust the School Board to do what is right for our students**

*\*May 2018 survey*

## **Ep** FINANCIALLY ACCOUNTABLE



**Eden Prairie Schools has consistently received awards for its high level of financial transparency, reporting and accountability. These awards include:**



**ASSOCIATION OF  
SCHOOL BUSINESS OFFICIALS  
INTERNATIONAL**



**Certificate of Excellence in Financial Reporting  
from the Association of School Business Officials  
International (18 years)**



**Government  
Finance Officers  
Association**



**Certificate of Achievement for Excellence in Financial  
Reporting from the Government  
Finance Officers Association (4 years)**



**Minnesota Department of  
Education**



**School Finance Award from the Minnesota  
Department of Education (14 years)**

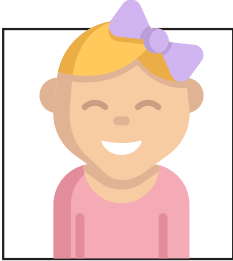


# IF VOTERS APPROVE THE REQUEST

## What will it cost?

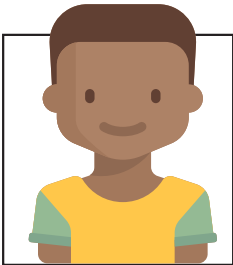
Voter approval of this referendum would give the School Board permission to issue \$39.9 million in bonds to fund construction and materials needed. The tax impact on the average homeowner\* would be about \$6.50 a month.

*\*\$397,400 median value home*



## Elementary schools

- Our youngest learners would be more academically, socially and emotionally prepared for the transition to elementary school, as preschool and kindergarten teachers collaborate to ensure student success.
- Improved and safer traffic flow by moving 6th graders to the middle school and giving preschoolers a separate start time and bus schedule than the rest of the school.
- Updated spaces and playgrounds where needed for preschoolers.



## Middle school

- An updated learning environment for grades 6-8 with new classrooms, collaborative learning spaces and building-wide updates.
- Stronger performing arts opportunities with a new performing arts space open to elementary and middle school students, as well as community members.
- A more cohesive three-year program that helps build teacher-student relationships.
- Access for 6th graders to additional academic, extra-curricular and after-school opportunities not available in elementary schools.
- Improved traffic flow and safety for student pick-up and drop-off.
- An improved lunch experience and expanded cafeteria.



## High school and all schools

- Improved safety and security systems for students and staff. The proposed improvements would add additional security layers to each building beyond the existing secure entrances.
- Increased support for personalized learning and flexible classrooms districtwide, enabling teachers to meet each student's individual learning needs and accommodate a range of learning styles.



# IF VOTERS DO NOT APPROVE THE REQUEST

- Safety and security improvements would be delayed and staggered across schools.
- Central Middle School - which was built 60 years ago and has not had major construction updates for 25 years - would continue to have traffic congestion, five lunch periods beginning at 10 a.m. and inadequate performing arts space.
- Students would have limited access to flexible learning environments, inhibiting teachers' ability to meet a range of learning styles.
- As other districts invest in updated classroom designs, Eden Prairie would not have that same ability.
- Students, community members and programs would continue to compete for limited performing arts space and opportunities.
- Fewer preschool students would be served due to lack of space.

# TAX COMPARISON CHART

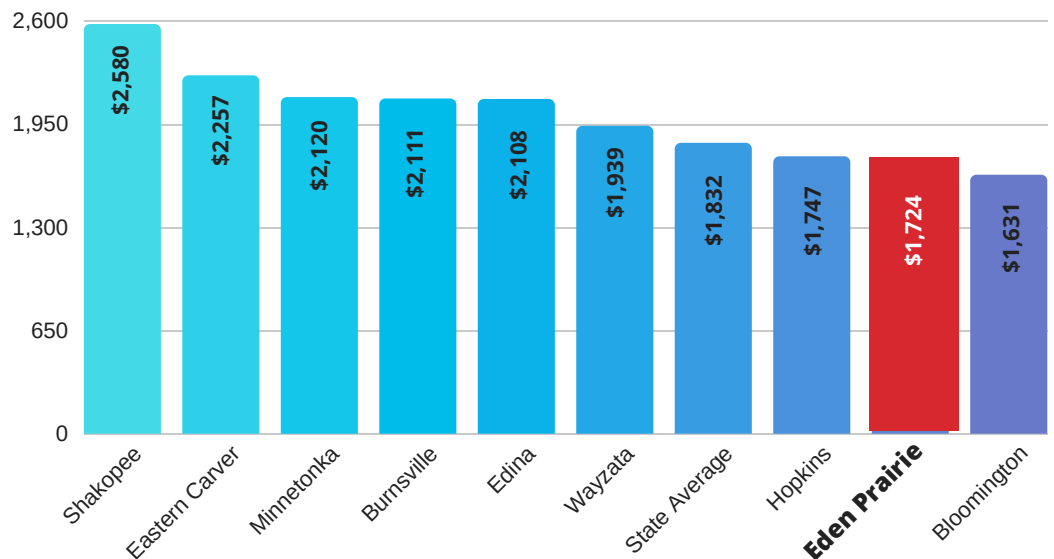


We have the **second lowest** total school property taxes of neighboring and Lake Conference school districts - and will still be below the state average if voters approve this funding request.

## FINANCIAL STEWARDSHIP

### Total School Property Taxes

Payable 2018, on a home with an estimated market value of \$397,400



## KEEPING OUR PROMISES

**Thanks to our community for their support of our levy request in 2014:**

- We maintained a balanced budget without cuts for five years, and project we will be able to keep that commitment even longer than anticipated.
- We immediately lowered class sizes in kindergarten and first grade.
- We also lowered class sizes in grades 2 and 3, even though that was not promised.
- We provided additional math, reading and teacher support for all elementary schools.



## HOW TO VOTE

Polls will be open on **May 14** from **7am to 8pm**. All voters will vote at one of four combined polling locations - visit [www.mnvotes.org](http://www.mnvotes.org) or call **952-975-7072** to find your location. Early voting begins **March 29**.



EDEN PRAIRIE SCHOOLS 8100 School Road, Eden Prairie, MN 55344



## LEARN MORE

- Visit [EPVote2019.org](http://EPVote2019.org)
- Email [EPVote2019@edenpr.org](mailto:EPVote2019@edenpr.org)
- Call **952-975-2498**

Prepared and paid for by the Eden Prairie Public Schools. This publication is not circulated on behalf of any candidate or ballot question.