

ELEV. +149 FT

EXISTING
SKATE PARK
TO REMAIN

EXISTING TOWN HALL
TO BE REMOVED AFTER
CONSTRUCTION OF NEW

NEW SIDE WALK BETWEEN
PARKING AND PROPOSED
BUILDING

ELEV. +149 FT

NEW PARKING

ONE OR TWO
WAY DRIVE

ENTRY

PROPOSED TOWN HALL LOCATION
ELEV. +149 FT

ENTRY

NEW SIDE WALK AT FRONT

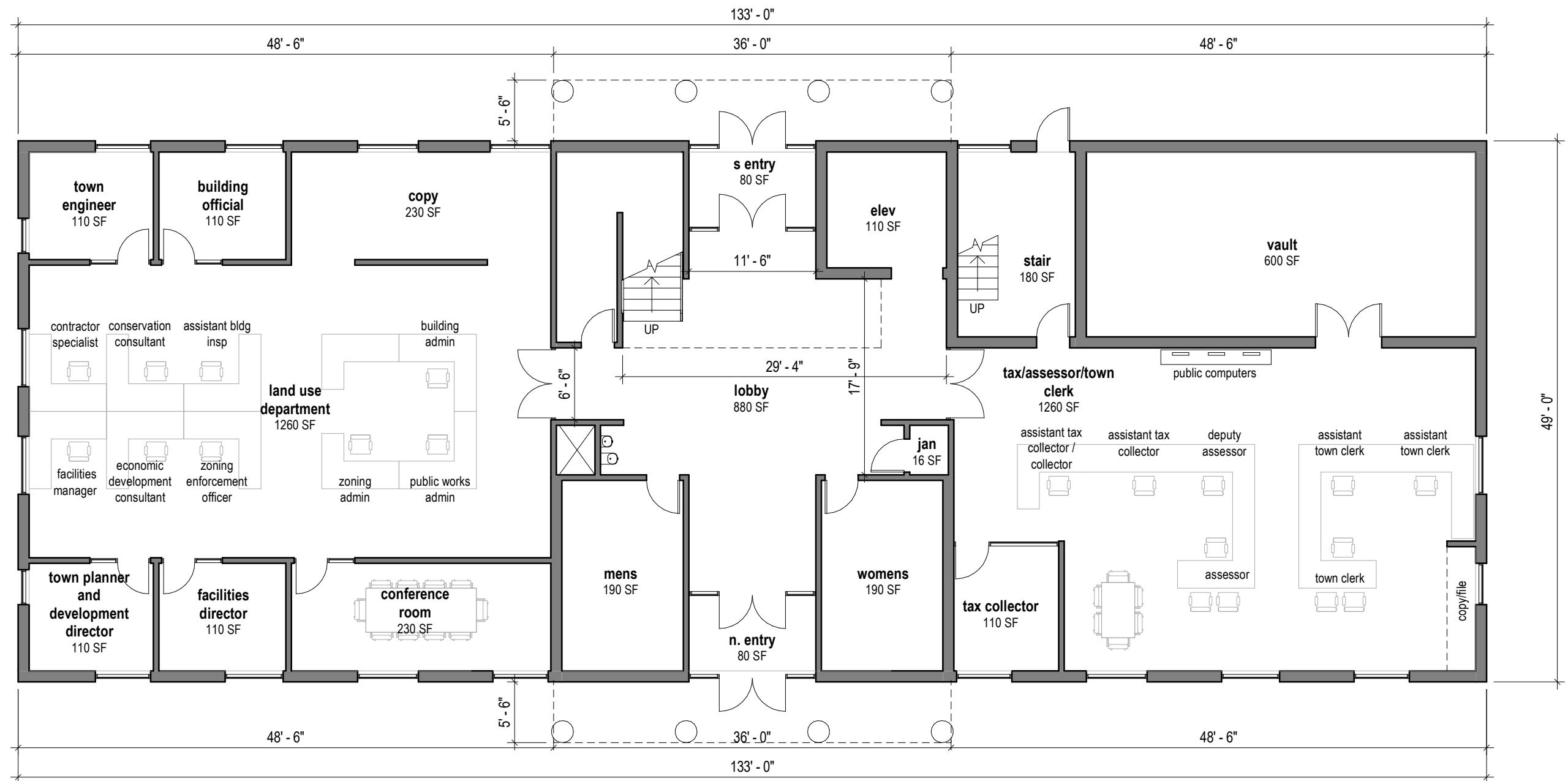
ELEV. +154 FT

CHARTER OAK
TREE TO REMAIN

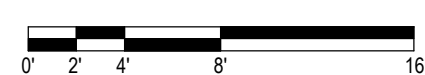
ELIMINATE CURB CUT







floor area: 6,160 SF



preliminary



Town of Suffield

83 Mountain Rd.
Suffield, CT 06078

Town Hall Renovation/Addition Space Plan Study

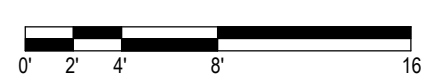
Street Level

tos 4521B 09/07/2018

A-01



floor area: 5,640 SF



preliminary



Town of Suffield

83 Mountain Rd.
Suffield, CT 06078

Town Hall Renovation/Addition
Space Plan Study

Upper Level

tos 4521B 09/07/2018

A-02