

LEA Name : Unionville-Chadds Ford SD
Address : 740 Unionville Road
Kennett Square , PA 19348

County : Chester
AUN Number : 124158503
LEA Type : SD

Annual Financial Report Accuracy Certification Statement

For Fiscal Year Ending

6/30/2019

Pennsylvania Department of Education

&

Office of Comptroller Operations

PDE-2056: Intermediate Unit

PDE-2057: School District, AVTS/CTC, Charter School,
and Special Program Jointure

CERTIFICATION: By signing this page I agree that the electronic data submitted is a complete and accurate statement of the financial operations and status of the local education agency for the fiscal year. It has been prepared in accordance with generally accepted accounting principles and established Commonwealth of PA reporting guidelines.



Chief School Administrator Signature

10-30-19

Date



Board Secretary Signature

10-30-2019

Date

Joseph Deady

Contact Person

jdeady@ucfsd.net

Contact Person E-mail Address

(610)347-0970 Ext :3320

Contact Person Telephone Number

Contact Person Fax Number

Audit Certification
Annual Financial Report:
For Fiscal Year Ending **6/30/2019**
(Pursuant to PA School Code Section 218(b))

LEA Name : Unionville-Chadds Ford SD
AUN Number : 124158503
County : Chester

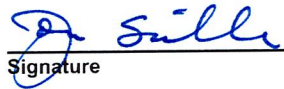
Audit Certification Due: 12/31/2019

This certification is applicable to the Annual Financial Report data submitted
through the Consolidated Financial Reporting System on: 10/30/2019
Date

Auditing Firm:
BBD

CERTIFICATION: By signing this page I agree that the financial statements of the school have been properly audited as noted above pursuant to Article XXIV, and in the auditor's professional opinion, the Annual Financial Report (PDE-2057) submitted on the date referenced is materially consistent with the audited financial statements.

Chief School Administrator


Signature

10-30-19
Date

Board Secretary


Signature

10-30-2019
Date

Joseph Deady

Contact Person

jdeady@ucfsd.net

Contact Person E-mail Address

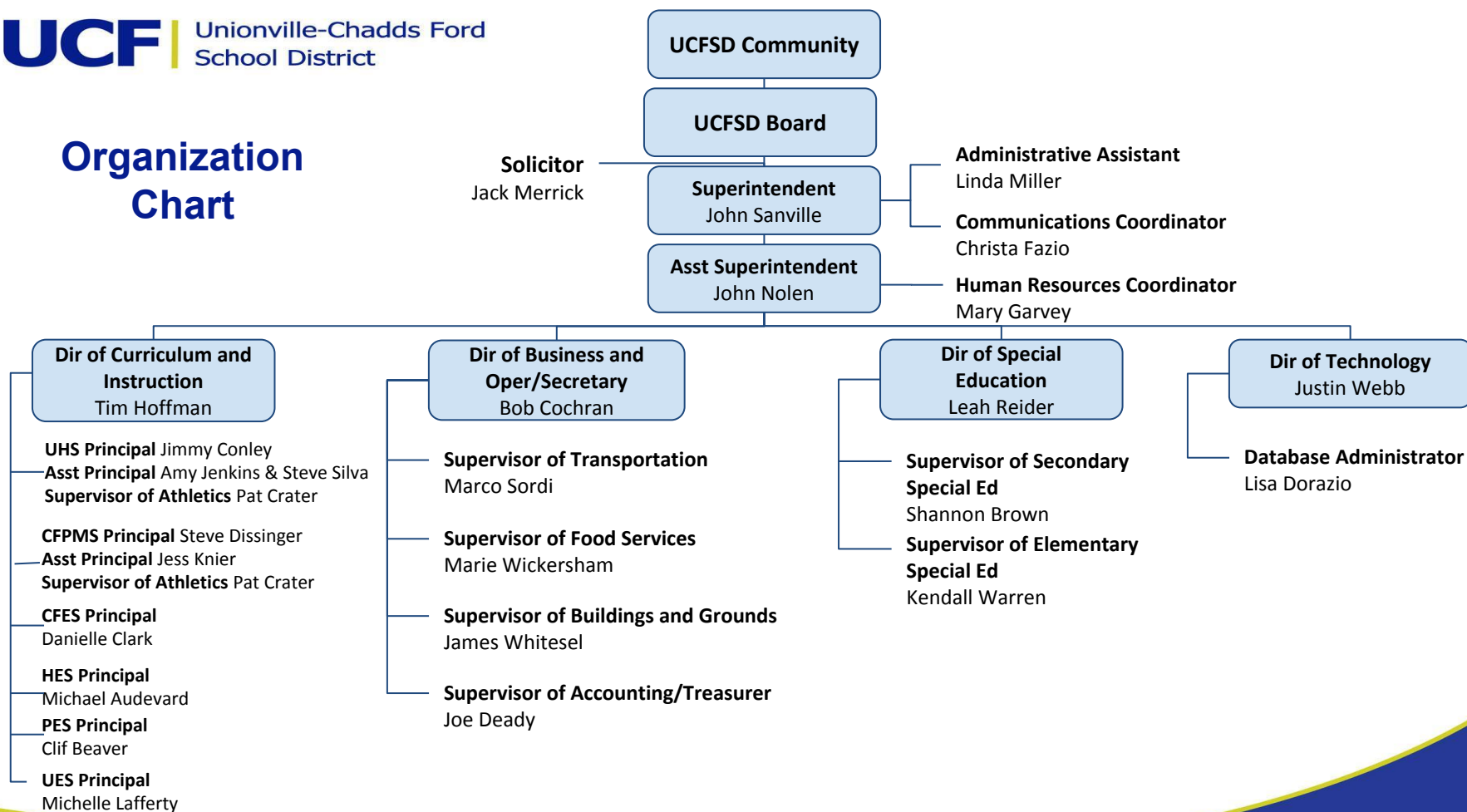
(610)347-0970

Ext :3320

Contact Person Telephone Number

Contact Person Fax Number

Organization Chart



<u>Val Number</u>	<u>Description</u>	<u>Justification</u>
42420	Expenditure Detail: Total current year 2700-513 expenditure varies from prior year by 10%. Correct the data or enter a justification. 2700-513, AFR Exp Detail: \$1,600.00 2700-513, PY AFR Amount: \$0.00	no need for contracted carriers in prior year.
50440	SESS - 2260 Instruction and Curriculum Development Services: SESS Schedule amounts for Special Education vary from prior year by 40% or more. Correct the data or enter a justification. SESS Schedule 2260: \$203,836.56 Prior Year SESS Schedule 2260: \$129,718.03	increase in spending due to purchase of materials/supplies for curriculum.

LEA : 124158503 Unionville-Chadds Ford SD

Printed 10/30/2019 1:37:14 PM

Amounts Expressed in Whole Dollars		<u>General Fund</u> <u>(10)</u>	<u>Public Purpose Trust</u> <u>(27)</u>	<u>Other Compt Approved</u> <u>(28)</u>	<u>Athletic / Activity</u> <u>(29)</u>	<u>Capital Reserve (690.</u> <u>1850)</u> <u>(31)</u>
Assets And Deferred Outflows Of Resources						
Assets						
0100	Cash and Cash Equivalents	13,861,223				
0110	Investments	4,451,000				
0120	Taxes Receivable	1,029,555				
0130	Due From Other Funds					
0141	Due From Other Governments	4,161,214				
0142	State Revenue Receivable					
0143	Federal Revenue Receivable					
0145	Other Intergovernmental Revenue Receivable					
0146	Due from Primary Government					
0147	Due from Component Unit					
0150	Other Receivables	63,939				
0170	Inventories					
0180	Prepaid Expenses (Expenditures)	4,253				
0190	Other Current Assets					
Total Assets		\$23,571,184				
0910	Deferred Outflows of Resources					
Total Assets And Deferred Outflows Of Resources		\$23,571,184				

LEA : 124158503 Unionville-Chadds Ford SD

Printed 10/30/2019 1:37:14 PM

Amounts Expressed in Whole Dollars		<u>Capital Reserve (1431</u> <u>(32)</u>	<u>Other Capital Projects</u> <u>Fund</u> <u>(39)</u>	<u>Debt Service</u> <u>(40)</u>	<u>Permanent</u> <u>(90)</u>	<u>Total Governmental</u> <u>Funds</u>
Assets And Deferred Outflows Of Resources						
Assets						
0100	Cash and Cash Equivalents	1,701,892	8,664,715			24,227,830
0110	Investments					4,451,000
0120	Taxes Receivable					1,029,555
0130	Due From Other Funds	1,015,850	489			1,016,339
0141	Due From Other Governments					4,161,214
0142	State Revenue Receivable					
0143	Federal Revenue Receivable					
0145	Other Intergovernmental Revenue Receivable					
0146	Due from Primary Government					
0147	Due from Component Unit					
0150	Other Receivables					63,939
0170	Inventories					
0180	Prepaid Expenses (Expenditures)					4,253
0190	Other Current Assets					
Total Assets		\$2,717,742	\$8,665,204			\$34,954,130
0910	Deferred Outflows of Resources					
Total Assets And Deferred Outflows Of Resources		\$2,717,742	\$8,665,204			\$34,954,130

LEA : 124158503 Unionville-Chadds Ford SD

Printed 10/30/2019 1:37:14 PM

Amounts Expressed in Whole Dollars		<u>General Fund</u> <u>(10)</u>	<u>Public Purpose Trust</u> <u>(27)</u>	<u>Other Compt Approved</u> <u>(28)</u>	<u>Athletic / Activity</u> <u>(29)</u>	<u>Capital Reserve (690.</u> <u>1850)</u> <u>(31)</u>
Liabilities And Deferred Inflows Of Resources And Fund Balances						
Liabilities						
0400	Due to Other Funds	1,752,946				
0411	Due to Other Governments					
0412	Due to Primary Government					
0413	Due to Component Unit					
0420	Accounts Payable	1,530,879				
0430	Contracts Payable					
0440	Current Portion of Long-Term Debt					
0450	Short-Term Payables					
0461	Accrued Salaries and Benefits	10,699,327				
0462	Payroll Deductions and Withholding					
0480	Unearned Revenues					
0490	Other Current Liabilities					
Total Liabilities		\$13,983,152				
0950	Deferred Inflows of Resources	684,291				
Fund Balances						
0810	Nonspendable Fund Balance	4,253				
0820	Restricted Fund Balance					
0830	Committed Fund Balance	3,441,205				
0840	Assigned Fund Balance					
0850	Unassigned Fund Balance	5,458,283				
Total Fund Balances		\$8,903,741				
Total Liabilities, Deferred Inflows Of Resources And Fund Balances		\$23,571,184				

LEA : 124158503 Unionville-Chadds Ford SD

Printed 10/30/2019 1:37:14 PM

Amounts Expressed in Whole Dollars	Capital Reserve (1431) (32)	Other Capital Projects Fund (39)	Debt Service (40)	Permanent (90)	Total Governmental Funds
Liabilities And Deferred Inflows Of Resources And Fund Balances					
Liabilities					
0400 Due to Other Funds					1,752,946
0411 Due to Other Governments					
0412 Due to Primary Government					
0413 Due to Component Unit					
0420 Accounts Payable	16,281	856,568			2,403,728
0430 Contracts Payable					
0440 Current Portion of Long-Term Debt					
0450 Short-Term Payables					
0461 Accrued Salaries and Benefits					10,699,327
0462 Payroll Deductions and Withholding					
0480 Unearned Revenues					
0490 Other Current Liabilities					
Total Liabilities	\$16,281	\$856,568			\$14,856,001
0950 Deferred Inflows of Resources					684,291
Fund Balances					
0810 Nonspendable Fund Balance					4,253
0820 Restricted Fund Balance	2,701,461	7,808,636			10,510,097
0830 Committed Fund Balance					3,441,205
0840 Assigned Fund Balance					
0850 Unassigned Fund Balance					5,458,283
Total Fund Balances	\$2,701,461	\$7,808,636			\$19,413,838
Total Liabilities, Deferred Inflows Of Resources And Fund Balances	\$2,717,742	\$8,665,204			\$34,954,130

Amounts Expressed in Whole Dollars	General Fund (10)	Public Purpose Trust (27)	Other Compt Approved (28)	Athletic / Activity (29)	Capital Reserve (690. 1850) (31)
Revenues					
6000 Revenue from Local Sources	71,272,481				
7000 Revenue from State Sources	15,863,588				
8000 Revenue from Federal Sources	646,344				
Total Revenues	\$87,782,413				
Expenditures					
1000 Instruction	49,843,434				
2000 Support Services	26,507,920				
3000 Operation of Non-Instructional Services	1,742,801				
4000 Facilities Acquisition, Construction and Improvement Services					
5110 Debt Service	7,616,973				
5130 Refund of Prior Year Revenues / Receipts					
Total Expenditures	\$85,711,128				
Excess (Deficiency) Of Revenues Over Expenditures	\$2,071,285				
Other Financing Sources (Uses)					
9110 Face Value of Bonds Issued					
9120 Proceeds from Refunding of Bonds					
9130 Bond Premiums					
9200 Proceeds from Extended-Term Financing					
9300 Interfund Transfers - IN					
9400 Sale of or Compensation for Loss of Fixed Assets	11,311				
9710 Transfers from Component Units					
9720 Transfers from Primary Governments					
9910 Other Financing Sources Not Listed in the 9000 Series					
9990 Insurance Recoveries					
5120 Debt Service – Refunded Bonds					
5150 Bond Discounts					
5200 Interfund Transfers – Out	1,866,831				
5300 Transfers Out to Component Units/Primary Governments					
Total Other Financing Sources (Uses)	(\$1,855,520)				

LEA : 124158503 Unionville-Chadds Ford SD

Printed 10/30/2019 1:37:18 PM

Amounts Expressed in Whole Dollars		<u>Capital Reserve (1431</u> <u>(32)</u>	<u>Other Capital Projects</u> <u>Fund</u> <u>(39)</u>	<u>Debt Service</u> <u>(40)</u>	<u>Permanent</u> <u>(90)</u>	<u>Total Governmental</u> <u>Funds</u>
Revenues						
6000	Revenue from Local Sources	42,825	34,709			71,350,015
7000	Revenue from State Sources					15,863,588
8000	Revenue from Federal Sources					646,344
Total Revenues		\$42,825	\$34,709			\$87,859,947
Expenditures						
1000	Instruction					49,843,434
2000	Support Services		192,906			26,700,826
3000	Operation of Non-Instructional Services					1,742,801
4000	Facilities Acquisition, Construction and Improvement Services	2,753,588	1,229,864			3,983,452
5110	Debt Service					7,616,973
5130	Refund of Prior Year Revenues / Receipts					
Total Expenditures		\$2,753,588	\$1,422,770			\$89,887,486
Excess (Deficiency) Of Revenues Over Expenditures		(\$2,710,763)	(\$1,388,061)			(\$2,027,539)
Other Financing Sources (Uses)						
9110	Face Value of Bonds Issued		8,430,000			8,430,000
9120	Proceeds from Refunding of Bonds		5,170,000			5,170,000
9130	Bond Premiums		868,295			868,295
9200	Proceeds from Extended-Term Financing					
9300	Interfund Transfers - IN	1,866,831				1,866,831
9400	Sale of or Compensation for Loss of Fixed Assets					11,311
9710	Transfers from Component Units					
9720	Transfers from Primary Governments					
9910	Other Financing Sources Not Listed in the 9000 Series					
9990	Insurance Recoveries					
5120	Debt Service – Refunded Bonds		5,271,598			5,271,598
5150	Bond Discounts					
5200	Interfund Transfers – Out					1,866,831
5300	Transfers Out to Component Units/Primary Governments					
Total Other Financing Sources (Uses)		\$1,866,831	\$9,196,697			\$9,208,008

Amounts Expressed in Whole Dollars		<u>General Fund</u> <u>(10)</u>	<u>Public Purpose Trust</u> <u>(27)</u>	<u>Other Compt Approved</u> <u>(28)</u>	<u>Athletic / Activity</u> <u>(29)</u>	<u>Capital Reserve</u> <u>(690.</u> <u>1850)</u> <u>(31)</u>
Special And Extraordinary Items						
9920	Special Items – Gains					
9930	Extraordinary Items – Gains					
5520	Special Items – Losses					
5530	Extraordinary Items – Losses					
Net Change In Fund Balances		\$215,765				
Fund Balance						
0001	Fund Balance - Beginning of Fiscal Year	8,687,976				
Fund Balance - End Of Year		\$8,903,741				

Amounts Expressed in Whole Dollars		<u>Capital Reserve (1431)</u> <u>(32)</u>	<u>Other Capital Projects</u> <u>Fund</u> <u>(39)</u>	<u>Debt Service</u> <u>(40)</u>	<u>Permanent</u> <u>(90)</u>	<u>Total Governmental</u> <u>Funds</u>
Special And Extraordinary Items						
9920	Special Items – Gains					
9930	Extraordinary Items – Gains					
5520	Special Items – Losses					
5530	Extraordinary Items – Losses					
Net Change In Fund Balances		(\$843,932)	\$7,808,636			\$7,180,469
Fund Balance						
0001	Fund Balance - Beginning of Fiscal Year	3,545,393				12,233,369
Fund Balance - End Of Year		\$2,701,461	\$7,808,636			\$19,413,838

LEA : 124158503 Unionville-Chadds Ford SD

Printed 10/30/2019 1:37:20 PM

Amounts Expressed in Whole Dollars	Food Service (51)	Child Care Operations (52)	Other Enterprise (58)	TOTAL	Internal Service (60)
Assets And Deferred Outflows Of Resources					
Current Assets					
0100 Cash and Cash Equivalents	848,009			848,009	333,979
0110 Investments					3,750,000
0130 Due From Other Funds	139,844			139,844	596,763
0141 Due From Other Governments	74,477			74,477	
0142 State Revenue Receivable					
0143 Federal Revenue Receivable					
0146 Due from Primary Government					
0147 Due from Component Unit					
0150 Other Receivables					
0170 Inventories	21,774			21,774	
0180 Prepaid Expenses (Expenditures)					
0190 Other Current Assets					211,128
Total Current Assets	\$1,084,104			\$1,084,104	\$4,891,870
Noncurrent Assets					
0211 Land					
0212 Site Improvements (Net)					
0220 Buildings and Building Improvements (Net)					
0230 Machinery, Equipment and Furniture (Net)	219,043			219,043	
0250 Construction in Progress					
0260 Long Term Prepayments					
0290 Other Noncurrent Assets					
Total Noncurrent Assets	\$219,043			\$219,043	
0910 Deferred Outflows of Resources	283,994			283,994	
Total Assets And Deferred Outflows Of Resources	\$1,587,141			\$1,587,141	\$4,891,870

Amounts Expressed in Whole Dollars	Food Service (51)	Child Care Operations (52)	Other Enterprise (58)	TOTAL	Internal Service (60)
Liabilities And Deferred Inflows Of Resources And Net Position					
Current Liabilities					
0400 Due to Other Funds					
0411 Due to Other Governments					
0413 Due to Component Unit					
0420 Accounts Payable	110			110	
0430 Contracts Payable					
0440 Current Portion of Long-Term Debt					
0450 Short-Term Payables					
0461 Accrued Salaries and Benefits	17,358			17,358	596,763
0462 Payroll Deductions and Withholding					
0480 Unearned Revenues	75,886			75,886	
0490 Other Current Liabilities					
Total Current Liabilities	\$93,354			\$93,354	\$596,763
Noncurrent Liabilities					
0510 Bonds Payable					
0520 Extended-Term Financing Agreements Payable					
0530 Lease-Purchase Obligations					
0540 Accumulated Compensated Absences					
0550 Authority Lease Obligations					
0560 Other Post-Employment Benefits (OPEB)	126,853			126,853	
0570 Net Pension Liability	1,816,162			1,816,162	
0599 Other Noncurrent Liabilities					
Total Noncurrent Liabilities	\$1,943,015			\$1,943,015	
Total Liabilities	\$2,036,369			\$2,036,369	\$596,763
0950 Deferred Inflows of Resources	52,939			52,939	
Net Position					
0791 Net Investment in Capital Assets	219,043			219,043	
0008 Restricted Net Position (0792 – 0798)					
0799 Unrestricted Net Position	(721,210)			(721,210)	4,295,107
Total Net Position	(\$502,167)			(\$502,167)	\$4,295,107
Total Liabilities And Deferred Inflows Of Resources And Net Position	\$1,587,141			\$1,587,141	\$4,891,870

Amounts Expressed in Whole Dollars	<u>Food Service</u> <u>(51)</u>	<u>Child Care Operations</u> <u>(52)</u>	<u>Other Enterprise</u> <u>(58)</u>	<u>TOTAL</u>	<u>Internal Service</u> <u>(60)</u>
Operating Revenues					
6600 Food Service Revenue	1,458,703			1,458,703	
0071 Charges for Services					7,337,963
0072 Other Operating Revenue					
Total Operating Revenues	\$1,458,703			\$1,458,703	\$7,337,963
Operating Expenses					
100 Personnel Services – Salaries	585,256			585,256	
200 Personnel Services – Employee Benefits	434,725			434,725	7,328,931
300 Purchased Professional and Technical Services					9,032
400 Purchased Property Services					
500 Other Purchased Services					
600 Supplies	778,458			778,458	
740 Depreciation	52,920			52,920	
810 Dues and Fees					
890 Miscellaneous Expenditures					
Total Operating Expenses	\$1,851,359			\$1,851,359	\$7,337,963
Operating Income (Loss)	(\$392,656)			(\$392,656)	\$0
Non Operating Revenues (Expenses)					
6500 Earnings on Investments	31,412			31,412	83,792
6920 Contributions and Donations from Private Sources					
6930 Gains or Losses on Sale of Fixed Assets					
6991 Refunds of a Prior Year Expenditure					
7000 Revenue from State Sources	143,760			143,760	
8000 Revenue from Federal Sources	229,249			229,249	
9990 Insurance Recoveries					
820 Claims and Judgments Against the LEA					
830 Interest					
TOTAL Non Operating Revenues (Expenses)	\$404,421			\$404,421	\$83,792
Income (Loss) Before Contributions And Transfers	\$11,765			\$11,765	\$83,792

Amounts Expressed in Whole Dollars	<u>Food Service</u> (51)	<u>Child Care Operations</u> (52)	<u>Other Enterprise</u> (58)	<u>TOTAL</u>	<u>Internal Service</u> (60)
Contributions, Transfers, and Special and Extraordinary Items					
5200 Interfund Transfers – Out					
5300 Transfers Out to Component Units/Primary Governments					
5520 Special Items – Losses					
5530 Extraordinary Items – Losses					
9300 Interfund Transfers - IN					
9500 Capital Contributions					
9700 Transfers IN From Component Units/Primary Governments					
9920 Special Items – Gains					
9930 Extraordinary Items – Gains					
Change In Net Position	\$11,765			\$11,765	\$83,792
0002 Net Position - Beginning of Fiscal Year	(513,932)			(513,932)	4,211,315
0003 Accounting Changes / Residual Equity Transfers					
Net Position - End Of Year	(\$502,167)			(\$502,167)	\$4,295,107

LEA : 124158503 Unionville-Chadds Ford SD

Printed 10/30/2019 1:37:31 PM

Amounts Expressed in Whole Dollars	<u>Food Service</u> <u>(51)</u>	<u>Child Care Operations</u> <u>(52)</u>	<u>Other Enterprise</u> <u>(58)</u>	<u>TOTAL</u>	<u>Internal Service(60)</u>
Cash Flows From Operating Activities					
0011 Cash Receipts From Users	1,461,784			1,461,784	
0012 Cash Receipts From Assessments Made to Other Funds					7,285,336
0013 Cash Receipts From Earnings on Investments					
0014 Cash Receipts From Other Operating Revenue					
0015 Cash Payments To Employees For Services	1,152,981			1,152,981	
0016 Cash Payments For Insurance Claims					7,276,304
0017 Cash Payments To Suppliers For Goods and Services	730,734			730,734	
0018 Cash Payments For Other Operating Expenses					9,032
Net Cash Provided By (Used For) Operating Activities	(\$421,931)			(\$421,931)	\$0
Cash Flows From Non-Capital Financing Activities					
0021 Receipts From Local Sources - 6000					
0022 Receipts From State Sources - 7000	143,763			143,763	
0023 Receipts From Federal Sources -8000	131,781			131,781	
0024 Notes and Loans Received (Repaid)					
0025 Interest Paid on Notes/Loans - 5100-830					
0026 Operating Transfers In (Out)/Residual Equity Trans					
0027 Operating Transfers In (Out) Primary Government / Comp Unit					
0028 Receipts From Refund of Prior Year Expenditures - 6991					
0029 Special and Extraordinary Gains (losses)					
0030 Receipts from Insurance Recoveries -9990					
Net Cash Prov By (Used for) Non-Capital Financing Activities	\$275,544			\$275,544	
Cash Flows From Capital and Related Financing Activities					
0031 Payments For Fac Acq, Const, and Imp - 4000	(63,538)			(63,538)	
0032 Gain / (Loss) on Sale of Fixed Assets - 6930					
0033 Proceeds From Extended Term Financing - 9200					
0034 Principal Paid on Financing Agreements					
0035 Interest Paid on Financing Agreements - 5100-830					
0036 (Inc) Dec in Contributed Capital					
Net Cash Prov By (Used for) Capital and Related Financing Activities	(\$63,538)			(\$63,538)	
Cash Flows From Investing Activities					
0041 Earnings on Investments - 6500	31,412			31,412	83,792
0042 Purchase of Inv Securities / Deposits to Inv Pools					
0043 Receipts From Investment Pool Withdrawals					
0044 Proceeds from Sale and Maturity of Inv Securities					

LEA : 124158503 Unionville-Chadds Ford SD

Printed 10/30/2019 1:37:31 PM

0045 Loans Received (Paid)

Net Cash Prov By (Used for) Investing Activities	\$31,412	\$31,412	\$83,792
--	----------	----------	----------

LEA : 124158503 Unionville-Chadds Ford SD

Printed 10/30/2019 1:37:31 PM

	Food Service (51)	Child Care Operations (52)	Other Enterprise (58)	TOTAL	Internal Service (60)
Net Increase (Decrease) in Cash Flows	(178,513)			(178,513)	83,792
0004 Cash and Cash Equivalents Beginning of Year	1,026,522			1,026,522	250,187
Cash and Cash Equivalents at Year End	\$848,009			\$848,009	\$333,979
Reconciliation of Operating Income (Loss) To Net Cash Provided by (Used For) Operating Activities					
0005 Operating Income (Loss) per REP	(392,656)			(392,656)	
Adjustments					
0051 Depreciation and Net Amortization	52,920			52,920	
0052 Provision for Uncollectible Accounts					
0053 Other Adjustments	51,025			51,025	
Effect of Changes in Assets, Liabilities, Deferred Outflows and Deferred Inflows					
0054 (Inc) Dec In Accounts Receivable (0120-0150)					
0055 Advances to Other Funds (0160)					
0056 (Inc) Dec in Inventories (0170)	(3,411)			(3,411)	
0057 (Inc) Dec in Prepaid Expenses (0180)					
0058 (Inc) Dec in Other Current or Noncurrent Assets	(139,844)			(139,844)	(52,627)
0064 Deferred Outflows (0910)	68,703			68,703	
0059 Inc (Dec) in Accounts Payable (0400-0450)	110			110	
0060 Inc (Dec) in Accrued Salaries/Benefits (0461)	3,666			3,666	52,627
0065 Inc (Dec) in Net Pension Liabilities (0570)	(78,216)			(78,216)	
0066 Inc (Dec) in Other Postemp Benefit Oblig (0560)	1,166			1,166	
0061 Inc (Dec) in Payroll Deductions/Withholding (0462)					
0062 Inc (Dec) in Unearned Revenue (0480)	3,081			3,081	
0063 Inc (Dec) in Other Current or Noncurrent Liabilities	(24,017)			(24,017)	
0067 Deferred Inflows (0950)	35,542			35,542	
Total Adjustments	(\$29,275)			(\$29,275)	
Cash Provided By (Used for) Total	(\$421,931)			(\$421,931)	

COMBINED STATEMENT OF CASH FLOWS
SCHEDULE OF NONCASH INVESTING, CAPITAL, AND FINANCING ACTIVITIES

Explanation of Transaction and Balance Sheet Effect	Amount
USDA Donated Commodities	51,025
Total	\$51,025

LEA : 124158503 Unionville-Chadds Ford SD

Printed 10/30/2019 1:37:33 PM

Amounts Expressed in Whole Dollars	<u>Private Purpose Trust</u> <u>(71)</u>	<u>Investment Trust</u> <u>(72)</u>	<u>Pension Trust</u> <u>(73)</u>	<u>Activity</u> <u>(81)</u>
Assets And Deferred Outflows Of Resources				
Assets				
0100 Cash and Cash Equivalents	51,331			407,575
0110 Investments				
0130 Due From Other Funds				
0147 Due from Component Unit				
0150 Other Receivables				
0170 Inventories				
0180 Prepaid Expenses (Expenditures)				
0190 Other Current Assets				
0220 Buildings and Building Improvements (Net)				
0230 Machinery, Equipment and Furniture (Net)				
Total Assets	\$51,331			\$407,575
0910 Deferred Outflows of Resources				
Total Assets And Deferred Outflows Of Resources	\$51,331			\$407,575

LEA : 124158503 Unionville-Chadds Ford SD

Printed 10/30/2019 1:37:33 PM

Amounts Expressed in Whole Dollars		<u>Other Agency</u> <u>(89)</u>	<u>Discrete Component Units</u> <u>(98)</u>	<u>Discrete Component Units</u> <u>(99)</u>	<u>Total Fiduciary Funds</u>
Assets And Deferred Outflows Of Resources					
Assets					
0100	Cash and Cash Equivalents				458,906
0110	Investments				
0130	Due From Other Funds				
0147	Due from Component Unit				
0150	Other Receivables				
0170	Inventories				
0180	Prepaid Expenses (Expenditures)				
0190	Other Current Assets				
0220	Buildings and Building Improvements (Net)				
0230	Machinery, Equipment and Furniture (Net)				
Total Assets					\$458,906
0910	Deferred Outflows of Resources				
Total Assets And Deferred Outflows Of Resources					\$458,906

LEA : 124158503 Unionville-Chadds Ford SD

Printed 10/30/2019 1:37:33 PM

Amounts Expressed in Whole Dollars	<u>Private Purpose Trust</u> <u>(71)</u>	<u>Investment Trust</u> <u>(72)</u>	<u>Pension Trust</u> <u>(73)</u>	<u>Activity</u> <u>(81)</u>
Liabilities, Deferred Inflows Of Resources And Net Position				
Liabilities				
0400 Due to Other Funds				
0411 Due to Other Governments				
0412 Due to Primary Government				
0413 Due to Component Unit				
0420 Accounts Payable				
0430 Contracts Payable				
0450 Short-Term Payables				
0461 Accrued Salaries and Benefits				
0462 Payroll Deductions and Withholding				
0480 Unearned Revenues				
0490 Other Current Liabilities				407,575
Total Liabilities				\$407,575
0950 Deferred Inflows of Resources				
Net Position				
0791 Net Investment in Capital Assets				
0009 Restricted Net Position (0792 – 0798)	51,331			
0799 Unrestricted Net Position				
Total Net Position	\$51,331			
Total Liabilities, Deferred Inflows Of Resources And Net Position	\$51,331			\$407,575

LEA : 124158503 Unionville-Chadds Ford SD

Printed 10/30/2019 1:37:33 PM

Amounts Expressed in Whole Dollars		<u>Other Agency</u> <u>(89)</u>	<u>Discrete Component Units</u> <u>(98)</u>	<u>Discrete Component Units</u> <u>(99)</u>	<u>Total Fiduciary Funds</u>
Liabilities, Deferred Inflows Of Resources And Net Position					
Liabilities					
0400	Due to Other Funds				
0411	Due to Other Governments				
0412	Due to Primary Government				
0413	Due to Component Unit				
0420	Accounts Payable				
0430	Contracts Payable				
0450	Short-Term Payables				
0461	Accrued Salaries and Benefits				
0462	Payroll Deductions and Withholding				
0480	Unearned Revenues				
0490	Other Current Liabilities				407,575
Total Liabilities					\$407,575
0950	Deferred Inflows of Resources				
Net Position					
0791	Net Investment in Capital Assets				
0009	Restricted Net Position (0792 – 0798)				51,331
0799	Unrestricted Net Position				
Total Net Position					\$51,331
Total Liabilities, Deferred Inflows Of Resources And Net Position					\$458,906

LEA : 124158503 Unionville-Chadds Ford SD

Printed 10/30/2019 1:37:35 PM

Amounts Expressed in Whole Dollars	<u>Private Purpose Trust</u> <u>(71)</u>	<u>Investment Trust</u> <u>(72)</u>	<u>Pension Trust</u> <u>(73)</u>	<u>Discrete Component</u> <u>Units</u> <u>(98)</u>	<u>Discrete Component</u> <u>Units</u> <u>(99)</u>	<u>Total Fiduciary</u> <u>Funds</u>
Additions						
0091 Gifts and Contributions	48,571					48,571
0092 Other Additions						
Deductions						
0093 Scholarships Awarded	43,459					43,459
0094 Other Deductions						
Change In Net Position	\$5,112					\$5,112
0006 Net Position – Beginning of Fiscal Year	46,219					46,219
0007 Net Position Held in Trust for Pension Benefits						
Net Position - End of Fiscal Year	\$51,331					\$51,331

	Revenue Reported In Current Year	Current Year Tax Accrual	Prior Year Tax Accrual	Taxes Collected In Current Year
Revenue from Local Sources				
6111 Current Real Estate Taxes	66,459,141.80			66,459,141.80
6112 Interim Real Estate Taxes	254,158.61	5,102.90	43,516.81	292,572.52
6113 Public Utility Realty Taxes	67,353.38			67,353.38
6153 Current Act 511 Real Estate Transfer Taxes	1,178,902.22	142,485.06	157,137.11	1,193,554.27
6411 Delinquent Real Estate Taxes	1,066,695.78	197,676.41	154,131.94	1,023,151.31
6500 Earnings on Investments	989,782.07			
6700 Revenues from LEA Activities	298,619.72			
6832 Federal IDEA Revenue Received as Pass Through	534,787.00			
6910 Rentals	68,290.54			
6920 Contributions and Donations from Private Sources	49.76			
6941 Regular Day School Tuition	6,889.00			
6944 Receipts from Other LEAs in Pennsylvania - Education	235,729.10			
6949 Other Tuition from Patrons	25,980.00			
6992 Energy Efficiency Revenues and Incentives	50,951.60			
6999 Other Revenues Not Specified Above	35,150.12			
TOTAL Revenue from Local Sources	\$71,272,480.70	\$345,264.37	\$354,785.86	\$69,035,773.28

	Revenue Reported In Current Year			
Revenue from State Sources				
7110 Basic Education Funding	3,293,401.26			
7160 Tuition for Orphans Subsidy	30,860.46			
7271 Special Education funds for School-Aged Pupils	1,811,775.49			
7311 Pupil Transportation Subsidy	560,167.38			
7312 Nonpublic and Charter School Pupil Transportation Subsidy	121,660.00			
7320 Rental and Sinking Fund Payments / Building Reimbursement Subsidy	275,511.65			
7330 Health Services (Medical, Dental, Nurse, Act 25)	78,873.70			
7340 State Property Tax Reduction Allocation	1,488,610.98			
7361 School Safety and Security Grants	73,400.00			
7505 Ready to Learn Block Grant	127,325.00			
7810 State Share of Social Security and Medicare Taxes	1,427,671.89			
7820 State Share of Retirement Contributions	6,574,330.48			
TOTAL Revenue from State Sources	\$15,863,588.29			

	Revenue Reported <u>In Current Year</u>			
<u>Revenue from Federal Sources</u>				
8514 NCLB, Title I - Improving the Academic Achievement of the Disadvantaged	107,452.54			
8515 NCLB, Title II - Preparing, Training and Recruiting High Quality Teachers and Principals	62,912.60			
8516 NCLB, Title III - Language Instruction for Limited English Proficient and Immigrant Students	24,626.46			
8517 NCLB, Title IV - 21St Century Schools	10,426.00			
8810 School-Based Access Medicaid Reimbursement Program (SBAP) Reimbursements (Access)	440,926.75			
TOTAL Revenue from Federal Sources	\$646,344.35			

	Revenue Reported In Current Year			
<u>Other Financing Sources</u>				
9400 Sale of or Compensation for Loss of Fixed Assets	11,311.00			
TOTAL Other Financing Sources	\$11,311.00			
TOTAL FROM ALL SOURCES	\$87,793,724.34	\$345,264.37	\$354,785.86	\$69,035,773.28

Revenue from Local Sources	71,272,480.70
Revenue from State Sources	15,863,588.29
Revenue from Federal Sources	646,344.35
Other Financing Sources	11,311.00
TOTAL FROM ALL SOURCES	\$87,793,724.34

LEA : 124158503 Unionville-Chadds Ford SD

Printed 10/30/2019 1:37:44 PM

General Fund (10)	
1000 Instruction	<u>Total</u>
100 <u>Personnel Services – Salaries</u>	
100 Personnel Services – Salaries	26,461,203.55
Total Personnel Services – Salaries	\$26,461,203.55
200 <u>Personnel Services – Employee Benefits</u>	
220 Social Security Contributions	1,913,343.47
230 PSERS Retirement Contributions	8,636,978.37
250 Unemployment Compensation	7,346.71
260 Workers' Compensation	120,414.18
270 Group Insurance – Self-Insurance	4,787,622.64
Total Personnel Services – Employee Benefits	\$15,465,705.37
300 <u>Purchased Professional and Technical Services</u>	
322 Professional Educational Services – Ius	1,879,916.00
329 Professional Educational Services – Other	1,852,759.27
330 Other Professional Services	628,453.19
Total Purchased Professional and Technical Services	\$4,361,128.46
400 <u>Purchased Property Services</u>	
430 Repairs and Maintenance Services	180,872.30
Total Purchased Property Services	\$180,872.30
500 <u>Other Purchased Services</u>	
561 Tuition To Other School Districts Within the State	80,035.26
562 Tuition To Pennsylvania Charter Schools	969,210.64
564 Tuition To Career and Technology Centers	668,591.23
567 Tuition To Approved Private Schools (APS) and PA Chartered Schools for the Deaf and Blind	75,401.75
580 Travel	64,950.11
596 Direct Payments To Intermediate Units	7,475.80
599 Other Miscellaneous Purchased Services	226,555.64
Total Other Purchased Services	\$2,092,220.43
600 <u>Supplies</u>	
610 General Supplies	462,448.25
630 Food	297.53
640 Books and Periodicals	352,392.82
Total Supplies	\$815,138.60
700 <u>Property</u>	
752 Capital Equipment – Original and Additional	465,024.69
762 Capitalized Equipment - Replacement	2,140.94
Total Property	\$467,165.63
Total 1000 Instruction	\$49,843,434.34

LEA : 124158503 Unionville-Chadds Ford SD

Printed 10/30/2019 1:37:44 PM

General Fund (10)

1100 Regular Programs – Elementary / Secondary	Elementary	Secondary	Federal	Total
100 Personnel Services – Salaries				
100 Personnel Services – Salaries	9,959,283.72	10,147,795.25	105,587.92	20,212,666.89
Total Personnel Services – Salaries	\$9,959,283.72	\$10,147,795.25	\$105,587.92	\$20,212,666.89
200 Personnel Services – Employee Benefits				
220 Social Security Contributions	737,766.79	723,157.54		1,460,924.33
230 PSERS Retirement Contributions	3,330,490.15	3,264,539.85		6,595,030.00
250 Unemployment Compensation	2,360.96	2,314.20		4,675.16
260 Workers' Compensation	48,900.36	47,932.04		96,832.40
270 Group Insurance – Self-Insurance	1,686,303.23	1,654,883.33	2,012.08	3,343,198.64
Total Personnel Services – Employee Benefits	\$5,805,821.49	\$5,692,826.96	\$2,012.08	\$11,500,660.53
300 Purchased Professional and Technical Services				
322 Professional Educational Services – lus			3,002.05	3,002.05
329 Professional Educational Services – Other	379,167.45	490,360.97		869,528.42
330 Other Professional Services			8,292.64	8,292.64
Total Purchased Professional and Technical Services	\$379,167.45	\$490,360.97	\$11,294.69	\$880,823.11
400 Purchased Property Services				
430 Repairs and Maintenance Services	80,447.76	97,972.82		178,420.58
Total Purchased Property Services	\$80,447.76	\$97,972.82		\$178,420.58
500 Other Purchased Services				
562 Tuition To Pennsylvania Charter Schools	158,273.66	416,188.22		574,461.88
580 Travel	10,791.28	41,083.13	156.94	52,031.35
Total Other Purchased Services	\$169,064.94	\$457,271.35	\$156.94	\$626,493.23
600 Supplies				
610 General Supplies	103,483.04	162,871.77	2,461.34	268,816.15
640 Books and Periodicals	89,492.01	261,452.77		350,944.78
Total Supplies	\$192,975.05	\$424,324.54	\$2,461.34	\$619,760.93
700 Property				
752 Capital Equipment – Original and Additional	58,877.40	76,664.40		135,541.80
762 Capitalized Equipment - Replacement	2,140.94			2,140.94
Total Property	\$61,018.34	\$76,664.40		\$137,682.74
Total 1100 Regular Programs – Elementary / Secondary	\$16,647,778.75	\$17,387,216.29	\$121,512.97	\$34,156,508.01

LEA : 124158503 Unionville-Chadds Ford SD

Printed 10/30/2019 1:37:44 PM

General Fund (10)

1110 Regular Programs	Elementary	Secondary	Federal	Total
100 <u>Personnel Services – Salaries</u>				
100 Personnel Services – Salaries	9,959,283.72	10,147,795.25		20,107,078.97
Total Personnel Services – Salaries	\$9,959,283.72	\$10,147,795.25		\$20,107,078.97
200 <u>Personnel Services – Employee Benefits</u>				
220 Social Security Contributions	737,766.79	723,157.54		1,460,924.33
230 PSERS Retirement Contributions	3,330,490.15	3,264,539.85		6,595,030.00
250 Unemployment Compensation	2,360.96	2,314.20		4,675.16
260 Workers' Compensation	48,900.36	47,932.04		96,832.40
270 Group Insurance – Self-Insurance	1,686,303.23	1,654,883.33		3,341,186.56
Total Personnel Services – Employee Benefits	\$5,805,821.49	\$5,692,826.96		\$11,498,648.45
300 <u>Purchased Professional and Technical Services</u>				
329 Professional Educational Services – Other	379,167.45	490,360.97		869,528.42
Total Purchased Professional and Technical Services	\$379,167.45	\$490,360.97		\$869,528.42
400 <u>Purchased Property Services</u>				
430 Repairs and Maintenance Services	80,447.76	97,972.82		178,420.58
Total Purchased Property Services	\$80,447.76	\$97,972.82		\$178,420.58
500 <u>Other Purchased Services</u>				
562 Tuition To Pennsylvania Charter Schools	158,273.66	416,188.22		574,461.88
580 Travel	10,791.28	41,083.13		51,874.41
Total Other Purchased Services	\$169,064.94	\$457,271.35		\$626,336.29
600 <u>Supplies</u>				
610 General Supplies	103,483.04	162,871.77		266,354.81
640 Books and Periodicals	89,492.01	261,452.77		350,944.78
Total Supplies	\$192,975.05	\$424,324.54		\$617,299.59
700 <u>Property</u>				
752 Capital Equipment – Original and Additional	58,877.40	76,664.40		135,541.80
762 Capitalized Equipment - Replacement	2,140.94			2,140.94
Total Property	\$61,018.34	\$76,664.40		\$137,682.74
Total 1110 Regular Programs	\$16,647,778.75	\$17,387,216.29		\$34,034,995.04

LEA : 124158503 Unionville-Chadds Ford SD

Printed 10/30/2019 1:37:44 PM

General Fund (10)				
1190 Federally-Funded Regular Programs	<u>Elementary</u>	<u>Secondary</u>	<u>Federal</u>	<u>Total</u>
100 <u>Personnel Services – Salaries</u>				
100 Personnel Services – Salaries			105,587.92	105,587.92
Total Personnel Services – Salaries			\$105,587.92	\$105,587.92
200 <u>Personnel Services – Employee Benefits</u>				
270 Group Insurance – Self-Insurance			2,012.08	2,012.08
Total Personnel Services – Employee Benefits			\$2,012.08	\$2,012.08
300 <u>Purchased Professional and Technical Services</u>				
322 Professional Educational Services – Ius			3,002.05	3,002.05
330 Other Professional Services			8,292.64	8,292.64
Total Purchased Professional and Technical Services			\$11,294.69	\$11,294.69
500 <u>Other Purchased Services</u>				
580 Travel			156.94	156.94
Total Other Purchased Services			\$156.94	\$156.94
600 <u>Supplies</u>				
610 General Supplies			2,461.34	2,461.34
Total Supplies			\$2,461.34	\$2,461.34
Total 1190 Federally-Funded Regular Programs			\$121,512.97	\$121,512.97

LEA : 124158503 Unionville-Chadds Ford SD

Printed 10/30/2019 1:37:44 PM

General Fund (10)

1200 Special Programs – Elementary / Secondary	Elementary	Secondary	Federal	Total
100 Personnel Services – Salaries				
100 Personnel Services – Salaries	3,487,592.65	2,313,257.76	436,936.00	6,237,786.41
Total Personnel Services – Salaries	\$3,487,592.65	\$2,313,257.76	\$436,936.00	\$6,237,786.41
200 Personnel Services – Employee Benefits				
220 Social Security Contributions	265,375.09	170,907.09	15,263.00	451,545.18
230 PSERS Retirement Contributions	1,191,638.52	778,463.33	67,902.00	2,038,003.85
250 Unemployment Compensation	1,527.21	1,144.34		2,671.55
260 Workers' Compensation	14,205.71	9,230.84		23,436.55
270 Group Insurance – Self-Insurance	852,446.51	579,991.49	11,986.00	1,444,424.00
Total Personnel Services – Employee Benefits	\$2,325,193.04	\$1,539,737.09	\$95,151.00	\$3,960,081.13
300 Purchased Professional and Technical Services				
322 Professional Educational Services – lus	625,814.10	1,251,099.85		1,876,913.95
329 Professional Educational Services – Other	468,937.74	452,864.20	30,963.37	952,765.31
330 Other Professional Services	6,621.00	613,539.55		620,160.55
Total Purchased Professional and Technical Services	\$1,101,372.84	\$2,317,503.60	\$30,963.37	\$3,449,839.81
400 Purchased Property Services				
430 Repairs and Maintenance Services		2,451.72		2,451.72
Total Purchased Property Services		\$2,451.72		\$2,451.72
500 Other Purchased Services				
561 Tuition To Other School Districts Within the State		24,630.34		24,630.34
562 Tuition To Pennsylvania Charter Schools	66,213.85	328,534.91		394,748.76
567 Tuition To Approved Private Schools (APS) and PA Chartered Schools for the Deaf and Blind		75,401.75		75,401.75
580 Travel	5,116.97	5,408.74		10,525.71
Total Other Purchased Services	\$71,330.82	\$433,975.74		\$505,306.56
600 Supplies				
610 General Supplies	38,472.15	63,254.34	91,905.61	193,632.10
630 Food	239.89	57.64		297.53
640 Books and Periodicals	960.22	487.82		1,448.04
Total Supplies	\$39,672.26	\$63,799.80	\$91,905.61	\$195,377.67
700 Property				
752 Capital Equipment – Original and Additional			329,482.89	329,482.89
Total Property			\$329,482.89	\$329,482.89
Total 1200 Special Programs – Elementary / Secondary	\$7,025,161.61	\$6,670,725.71	\$984,438.87	\$14,680,326.19

LEA : 124158503 Unionville-Chadds Ford SD

Printed 10/30/2019 1:37:44 PM

General Fund (10)

1210 Life Skills Support

	Elementary	Secondary	Federal	Total
100 <u>Personnel Services – Salaries</u>				
100 Personnel Services – Salaries		2,354.55	54,375.00	56,729.55
Total Personnel Services – Salaries		\$2,354.55	\$54,375.00	\$56,729.55
200 <u>Personnel Services – Employee Benefits</u>				
220 Social Security Contributions		1,998.47	2,080.00	4,078.47
230 PSERS Retirement Contributions		9,318.78	9,089.00	18,407.78
250 Unemployment Compensation		16.70		16.70
270 Group Insurance – Self-Insurance		16,919.12		16,919.12
Total Personnel Services – Employee Benefits		\$28,253.07	\$11,169.00	\$39,422.07
300 <u>Purchased Professional and Technical Services</u>				
322 Professional Educational Services – Ius	244,705.52	394,912.66		639,618.18
329 Professional Educational Services – Other	25,213.99	98,808.47		124,022.46
Total Purchased Professional and Technical Services	\$269,919.51	\$493,721.13		\$763,640.64
600 <u>Supplies</u>				
610 General Supplies	17,234.27	18,094.44		35,328.71
Total Supplies	\$17,234.27	\$18,094.44		\$35,328.71
Total 1210 Life Skills Support	\$287,153.78	\$542,423.19	\$65,544.00	\$895,120.97

LEA : 124158503 Unionville-Chadds Ford SD

Printed 10/30/2019 1:37:44 PM

General Fund (10)

1220 Sensory Support	Elementary	Secondary	Federal	Total
100 <u>Personnel Services – Salaries</u>				
100 Personnel Services – Salaries	297,655.65	77,785.32		375,440.97
Total Personnel Services – Salaries	\$297,655.65	\$77,785.32		\$375,440.97
200 <u>Personnel Services – Employee Benefits</u>				
220 Social Security Contributions	21,403.24	5,689.47		27,092.71
230 PSERS Retirement Contributions	96,601.38	25,678.85		122,280.23
250 Unemployment Compensation	65.95	17.53		83.48
260 Workers' Compensation	1,677.95	446.04		2,123.99
270 Group Insurance – Self-Insurance	57,752.15	15,351.84		73,103.99
Total Personnel Services – Employee Benefits	\$177,500.67	\$47,183.73		\$224,684.40
300 <u>Purchased Professional and Technical Services</u>				
322 Professional Educational Services – lus	42,947.88	56,452.47		99,400.35
329 Professional Educational Services – Other	9,311.68	1,508.64		10,820.32
Total Purchased Professional and Technical Services	\$52,259.56	\$57,961.11		\$110,220.67
500 <u>Other Purchased Services</u>				
580 Travel	1,676.31			1,676.31
Total Other Purchased Services	\$1,676.31			\$1,676.31
600 <u>Supplies</u>				
610 General Supplies	7,511.65	6,182.28		13,693.93
Total Supplies	\$7,511.65	\$6,182.28		\$13,693.93
Total 1220 Sensory Support	\$536,603.84	\$189,112.44		\$725,716.28

LEA : 124158503 Unionville-Chadds Ford SD

Printed 10/30/2019 1:37:44 PM

General Fund (10)

1230 Emotional Support

	Elementary	Secondary	Federal	Total
100 Personnel Services – Salaries				
100 Personnel Services – Salaries	464,458.21	286,061.27	230,184.00	980,703.48
Total Personnel Services – Salaries	\$464,458.21	\$286,061.27	\$230,184.00	\$980,703.48
200 Personnel Services – Employee Benefits				
220 Social Security Contributions	43,359.99	20,366.96	7,355.00	71,081.95
230 PSERS Retirement Contributions	195,700.96	91,777.29	33,343.00	320,821.25
250 Unemployment Compensation	217.07	200.37		417.44
260 Workers' Compensation	1,034.77	689.84		1,724.61
270 Group Insurance – Self-Insurance	134,844.00	74,225.73	11,986.00	221,055.73
Total Personnel Services – Employee Benefits	\$375,156.79	\$187,260.19	\$52,684.00	\$615,100.98
300 Purchased Professional and Technical Services				
322 Professional Educational Services – lus	187,290.78	441,338.05		628,628.83
329 Professional Educational Services – Other	131,802.35	145,335.36		277,137.71
Total Purchased Professional and Technical Services	\$319,093.13	\$586,673.41		\$905,766.54
500 Other Purchased Services				
561 Tuition To Other School Districts Within the State		24,630.34		24,630.34
567 Tuition To Approved Private Schools (APS) and PA Chartered Schools for the Deaf and Blind		14,880.00		14,880.00
580 Travel		547.26		547.26
Total Other Purchased Services		\$40,057.60		\$40,057.60
600 Supplies				
610 General Supplies	4,874.90	14,241.23		19,116.13
Total Supplies	\$4,874.90	\$14,241.23		\$19,116.13
Total 1230 Emotional Support	\$1,163,583.03	\$1,114,293.70	\$282,868.00	\$2,560,744.73

LEA : 124158503 Unionville-Chadds Ford SD

Printed 10/30/2019 1:37:44 PM

General Fund (10)				
1240 Academic Support	<u>Elementary</u>	<u>Secondary</u>	<u>Federal</u>	<u>Total</u>
100 <u>Personnel Services – Salaries</u>				
100 Personnel Services – Salaries	2,675,969.32	1,892,536.12	152,377.00	4,720,882.44
Total Personnel Services – Salaries	\$2,675,969.32	\$1,892,536.12	\$152,377.00	\$4,720,882.44
200 <u>Personnel Services – Employee Benefits</u>				
220 Social Security Contributions	196,900.45	138,989.29	5,828.00	341,717.74
230 PSERS Retirement Contributions	882,585.10	634,253.62	25,470.00	1,542,308.72
250 Unemployment Compensation	1,219.64	884.19		2,103.83
260 Workers' Compensation	11,430.72	8,030.15		19,460.87
270 Group Insurance – Self-Insurance	651,564.99	464,871.26		1,116,436.25
Total Personnel Services – Employee Benefits	\$1,743,700.90	\$1,247,028.51	\$31,298.00	\$3,022,027.41
300 <u>Purchased Professional and Technical Services</u>				
322 Professional Educational Services – lus	81,606.01	313,502.49		395,108.50
329 Professional Educational Services – Other	190,836.18	166,939.68		357,775.86
Total Purchased Professional and Technical Services	\$272,442.19	\$480,442.17		\$752,884.36
500 <u>Other Purchased Services</u>				
580 Travel		1,223.53		1,223.53
Total Other Purchased Services		\$1,223.53		\$1,223.53
600 <u>Supplies</u>				
610 General Supplies	3,879.85	994.62		4,874.47
640 Books and Periodicals	960.22	487.82		1,448.04
Total Supplies	\$4,840.07	\$1,482.44		\$6,322.51
Total 1240 Academic Support	\$4,696,952.48	\$3,622,712.77	\$183,675.00	\$8,503,340.25

LEA : 124158503 Unionville-Chadds Ford SD

Printed 10/30/2019 1:37:44 PM

General Fund (10)

1241 Learning Support – Public	Elementary	Secondary	Federal	Total
100 <u>Personnel Services – Salaries</u>				
100 Personnel Services – Salaries	2,274,404.73	1,683,653.61	152,377.00	4,110,435.34
Total Personnel Services – Salaries	\$2,274,404.73	\$1,683,653.61	\$152,377.00	\$4,110,435.34
200 <u>Personnel Services – Employee Benefits</u>				
220 Social Security Contributions	167,675.28	123,933.90	5,828.00	297,437.18
230 PSERS Retirement Contributions	750,680.23	566,302.63	25,470.00	1,342,452.86
250 Unemployment Compensation	1,142.50	844.45		1,986.95
260 Workers' Compensation	9,561.61	7,067.27		16,628.88
270 Group Insurance – Self-Insurance	576,913.97	426,414.68		1,003,328.65
Total Personnel Services – Employee Benefits	\$1,505,973.59	\$1,124,562.93	\$31,298.00	\$2,661,834.52
300 <u>Purchased Professional and Technical Services</u>				
322 Professional Educational Services – lus	81,606.01	313,502.49		395,108.50
329 Professional Educational Services – Other	190,836.18	166,939.68		357,775.86
Total Purchased Professional and Technical Services	\$272,442.19	\$480,442.17		\$752,884.36
500 <u>Other Purchased Services</u>				
580 Travel		1,223.53		1,223.53
Total Other Purchased Services		\$1,223.53		\$1,223.53
600 <u>Supplies</u>				
610 General Supplies	1,913.72	994.62		2,908.34
640 Books and Periodicals	960.22	487.82		1,448.04
Total Supplies	\$2,873.94	\$1,482.44		\$4,356.38
Total 1241 Learning Support – Public	\$4,055,694.45	\$3,291,364.68	\$183,675.00	\$7,530,734.13

LEA : 124158503 Unionville-Chadds Ford SD

Printed 10/30/2019 1:37:44 PM

General Fund (10)

1243 Gifted Support

	<u>Elementary</u>	<u>Secondary</u>	<u>Federal</u>	<u>Total</u>
100 <u>Personnel Services – Salaries</u>				
100 Personnel Services – Salaries	401,564.59	208,882.51		610,447.10
Total Personnel Services – Salaries	\$401,564.59	\$208,882.51		\$610,447.10
200 <u>Personnel Services – Employee Benefits</u>				
220 Social Security Contributions	29,225.17	15,055.39		44,280.56
230 PSERS Retirement Contributions	131,904.87	67,950.99		199,855.86
250 Unemployment Compensation	77.14	39.74		116.88
260 Workers' Compensation	1,869.11	962.88		2,831.99
270 Group Insurance – Self-Insurance	74,651.02	38,456.58		113,107.60
Total Personnel Services – Employee Benefits	\$237,727.31	\$122,465.58		\$360,192.89
600 <u>Supplies</u>				
610 General Supplies	1,966.13			1,966.13
Total Supplies	\$1,966.13			\$1,966.13
Total 1243 Gifted Support	\$641,258.03	\$331,348.09		\$972,606.12

LEA : 124158503 Unionville-Chadds Ford SD

Printed 10/30/2019 1:37:44 PM

General Fund (10)

1270 Multi-Handicapped Support

	<u>Elementary</u>	<u>Secondary</u>	<u>Federal</u>	<u>Total</u>
300 <u>Purchased Professional and Technical Services</u>				
322 Professional Educational Services – Ius	47,401.03	13,612.16		61,013.19
329 Professional Educational Services – Other	47,876.12	6,267.51		54,143.63
Total Purchased Professional and Technical Services	\$95,277.15	\$19,879.67		\$115,156.82
Total 1270 Multi-Handicapped Support	\$95,277.15	\$19,879.67		\$115,156.82

LEA : 124158503 Unionville-Chadds Ford SD

Printed 10/30/2019 1:37:44 PM

General Fund (10)

1280 Early Intervention Support	<u>Elementary</u>	<u>Secondary</u>	<u>Federal</u>	<u>Total</u>
300 <u>Purchased Professional and Technical Services</u>				
322 Professional Educational Services – lus	9,924.48			9,924.48
Total Purchased Professional and Technical Services	\$9,924.48			\$9,924.48
Total 1280 Early Intervention Support	\$9,924.48			\$9,924.48

LEA : 124158503 Unionville-Chadds Ford SD

Printed 10/30/2019 1:37:44 PM

General Fund (10)				
1290 Special Programs - Other Support	<u>Elementary</u>	<u>Secondary</u>	<u>Federal</u>	<u>Total</u>
100 <u>Personnel Services – Salaries</u>				
100 Personnel Services – Salaries	49,509.47	54,520.50		104,029.97
Total Personnel Services – Salaries	\$49,509.47	\$54,520.50		\$104,029.97
200 <u>Personnel Services – Employee Benefits</u>				
220 Social Security Contributions	3,711.41	3,862.90		7,574.31
230 PSERS Retirement Contributions	16,751.08	17,434.79		34,185.87
250 Unemployment Compensation	24.55	25.55		50.10
260 Workers' Compensation	62.27	64.81		127.08
270 Group Insurance – Self-Insurance	8,285.37	8,623.54		16,908.91
Total Personnel Services – Employee Benefits	\$28,834.68	\$30,011.59		\$58,846.27
300 <u>Purchased Professional and Technical Services</u>				
322 Professional Educational Services – lus	11,938.40	31,282.02		43,220.42
329 Professional Educational Services – Other	63,897.42	34,004.54	30,963.37	128,865.33
330 Other Professional Services	6,621.00	613,539.55		620,160.55
Total Purchased Professional and Technical Services	\$82,456.82	\$678,826.11	\$30,963.37	\$792,246.30
400 <u>Purchased Property Services</u>				
430 Repairs and Maintenance Services		2,451.72		2,451.72
Total Purchased Property Services		\$2,451.72		\$2,451.72
500 <u>Other Purchased Services</u>				
562 Tuition To Pennsylvania Charter Schools	66,213.85	328,534.91		394,748.76
567 Tuition To Approved Private Schools (APS) and PA Chartered Schools for the Deaf and Blind		60,521.75		60,521.75
580 Travel	3,440.66	3,637.95		7,078.61
Total Other Purchased Services	\$69,654.51	\$392,694.61		\$462,349.12
600 <u>Supplies</u>				
610 General Supplies	4,971.48	23,741.77	91,905.61	120,618.86
630 Food	239.89	57.64		297.53
Total Supplies	\$5,211.37	\$23,799.41	\$91,905.61	\$120,916.39
700 <u>Property</u>				
752 Capital Equipment – Original and Additional			329,482.89	329,482.89
Total Property			\$329,482.89	\$329,482.89
Total 1290 Special Programs - Other Support	\$235,666.85	\$1,182,303.94	\$452,351.87	\$1,870,322.66

LEA : 124158503 Unionville-Chadds Ford SD

Printed 10/30/2019 1:37:44 PM

General Fund (10)

1300 Vocational Education

	<u>Elementary</u>	<u>Secondary</u>	<u>Federal</u>	<u>Total</u>
500 <u>Other Purchased Services</u>				
561 Tuition To Other School Districts Within the State		20,800.00		20,800.00
564 Tuition To Career and Technology Centers		668,591.23		668,591.23
Total Other Purchased Services		\$689,391.23		\$689,391.23
Total 1300 Vocational Education		\$689,391.23		\$689,391.23

LEA : 124158503 Unionville-Chadds Ford SD

Printed 10/30/2019 1:37:44 PM

General Fund (10)

1400 Other Instructional Programs – Elementary / Secondary	Elementary	Secondary	Federal	Total
100 <u>Personnel Services – Salaries</u>				
100 Personnel Services – Salaries	2,788.20	7,962.05		10,750.25
Total Personnel Services – Salaries	\$2,788.20	\$7,962.05		\$10,750.25
200 <u>Personnel Services – Employee Benefits</u>				
220 Social Security Contributions	227.23	646.73		873.96
230 PSERS Retirement Contributions	1,025.58	2,918.94		3,944.52
260 Workers’ Compensation	37.76	107.47		145.23
Total Personnel Services – Employee Benefits	\$1,290.57	\$3,673.14		\$4,963.71
300 <u>Purchased Professional and Technical Services</u>				
329 Professional Educational Services – Other	519.49	29,946.05		30,465.54
Total Purchased Professional and Technical Services	\$519.49	\$29,946.05		\$30,465.54
500 <u>Other Purchased Services</u>				
561 Tuition To Other School Districts Within the State		34,604.92		34,604.92
580 Travel	595.40	1,797.65		2,393.05
596 Direct Payments To Intermediate Units		7,475.80		7,475.80
599 Other Miscellaneous Purchased Services		226,555.64		226,555.64
Total Other Purchased Services	\$595.40	\$270,434.01		\$271,029.41
Total 1400 Other Instructional Programs – Elementary / Secondary	\$5,193.66	\$312,015.25		\$317,208.91

LEA : 124158503 Unionville-Chadds Ford SD

Printed 10/30/2019 1:37:44 PM

General Fund (10)

1410 Drivers' Education

	<u>Elementary</u>	<u>Secondary</u>	<u>Federal</u>	<u>Total</u>
300 <u>Purchased Professional and Technical Services</u>				
329 Professional Educational Services – Other		29,193.39		29,193.39
Total Purchased Professional and Technical Services		\$29,193.39		\$29,193.39
Total 1410 Drivers' Education		\$29,193.39		\$29,193.39

LEA : 124158503 Unionville-Chadds Ford SD

Printed 10/30/2019 1:37:44 PM

General Fund (10)				
1430 Homebound Instruction	<u>Elementary</u>	<u>Secondary</u>	<u>Federal</u>	<u>Total</u>
100 <u>Personnel Services – Salaries</u>				
100 Personnel Services – Salaries	2,788.20	7,962.05		10,750.25
Total Personnel Services – Salaries	\$2,788.20	\$7,962.05		\$10,750.25
200 <u>Personnel Services – Employee Benefits</u>				
220 Social Security Contributions	227.23	646.73		873.96
230 PSERS Retirement Contributions	1,025.58	2,918.94		3,944.52
260 Workers’ Compensation	37.76	107.47		145.23
Total Personnel Services – Employee Benefits	\$1,290.57	\$3,673.14		\$4,963.71
300 <u>Purchased Professional and Technical Services</u>				
329 Professional Educational Services – Other	519.49	752.66		1,272.15
Total Purchased Professional and Technical Services	\$519.49	\$752.66		\$1,272.15
500 <u>Other Purchased Services</u>				
580 Travel	595.40	1,797.65		2,393.05
Total Other Purchased Services	\$595.40	\$1,797.65		\$2,393.05
Total 1430 Homebound Instruction	\$5,193.66	\$14,185.50		\$19,379.16

LEA : 124158503 Unionville-Chadds Ford SD

Printed 10/30/2019 1:37:44 PM

General Fund (10)

1440 Alternative Regular Education Programs

Elementary Secondary Federal Total

500 Other Purchased Services

561 Tuition To Other School Districts Within the State		34,604.92		34,604.92
596 Direct Payments To Intermediate Units		7,475.80		7,475.80
599 Other Miscellaneous Purchased Services		226,555.64		226,555.64
Total Other Purchased Services		\$268,636.36		\$268,636.36
Total 1440 Alternative Regular Education Programs		\$268,636.36		\$268,636.36

LEA : 124158503 Unionville-Chadds Ford SD

Printed 10/30/2019 1:37:44 PM

General Fund (10)

1441 Adjudicated / Court-Placed Programs

Elementary Secondary Federal Total

500 Other Purchased Services

561 Tuition To Other School Districts Within the State		34,604.92		34,604.92
599 Other Miscellaneous Purchased Services		226,555.64		226,555.64
Total Other Purchased Services		\$261,160.56		\$261,160.56
Total 1441 Adjudicated / Court-Placed Programs		\$261,160.56		\$261,160.56

LEA : 124158503 Unionville-Chadds Ford SD

Printed 10/30/2019 1:37:44 PM

General Fund (10)

1442 Alternative Education Programs	<u>Elementary</u>	<u>Secondary</u>	<u>Federal</u>	<u>Total</u>
500 <u>Other Purchased Services</u>				
596 Direct Payments To Intermediate Units		7,475.80		7,475.80
Total Other Purchased Services		\$7,475.80		\$7,475.80
Total 1442 Alternative Education Programs		\$7,475.80		\$7,475.80

LEA : 124158503 Unionville-Chadds Ford SD

Printed 10/30/2019 1:37:51 PM

General Fund (10)

2000 Support Services

Total

100	<u>Personnel Services – Salaries</u>	
100	Personnel Services – Salaries	12,730,916.79
Total Personnel Services – Salaries		\$12,730,916.79
200	<u>Personnel Services – Employee Benefits</u>	
220	Social Security Contributions	923,816.89
230	PSERS Retirement Contributions	4,169,361.44
240	Tuition Reimbursement	309,421.80
250	Unemployment Compensation	3,907.13
260	Workers' Compensation	56,821.38
270	Group Insurance – Self-Insurance	2,520,716.64
Total Personnel Services – Employee Benefits		\$7,984,045.28
300	<u>Purchased Professional and Technical Services</u>	
322	Professional Educational Services – Ius	9,406.51
329	Professional Educational Services – Other	391,471.99
330	Other Professional Services	177,125.43
340	Technical Services	23,458.18
350	Security / Safety Services	3,865.62
Total Purchased Professional and Technical Services		\$605,327.73
400	<u>Purchased Property Services</u>	
410	Cleaning Services	37,077.04
420	Utility Services	131,976.90
430	Repairs and Maintenance Services	562,114.40
440	Rentals	5,540.72
Total Purchased Property Services		\$736,709.06
500	<u>Other Purchased Services</u>	
513	Contracted Carriers	1,600.00
516	Student Transportation Services From the IU	1,878.32
520	Insurance – General	3,154.00
521	Fire Insurance	120,003.00
522	Automotive Liability Insurance	111,005.00
523	General Property and Liability Insurance	115,497.00
529	Other Insurance	127,566.00
530	Communications	(62,182.88)
549	Other Advertising/Public Relations	13,435.63
550	Printing and Binding	19,988.34
580	Travel	57,174.25
591	Services Purchased Locally	24,240.85
595	IU Payments By Withholding	42,013.14
Total Other Purchased Services		\$575,372.65
600	<u>Supplies</u>	
610	General Supplies	739,344.71
620	Energy	1,385,111.92
630	Food	23,948.14
640	Books and Periodicals	83,287.95

LEA : 124158503 Unionville-Chadds Ford SD

Printed 10/30/2019 1:37:51 PM

General Fund (10)

2000 Support Services

Total

Total Supplies		\$2,231,692.72
700 <u>Property</u>		
752	Capital Equipment – Original and Additional	124,305.78
756	Capitalized Technology Equipment – Original	715,387.41
762	Capitalized Equipment - Replacement	317,766.77
766	Capitalized Technology Equipment – Replacement	451,685.00
Total Property		\$1,609,144.96
800 <u>Other Objects</u>		
810	Dues and Fees	34,711.03
Total Other Objects		\$34,711.03
Total 2000 Support Services		\$26,507,920.22

LEA : 124158503 Unionville-Chadds Ford SD

Printed 10/30/2019 1:37:51 PM

General Fund (10)

2100 Support Services – Students	Elementary	Secondary	Federal	Total
100 <u>Personnel Services – Salaries</u>				
100 Personnel Services – Salaries	1,079,517.37	1,311,991.43		2,391,508.80
Total Personnel Services – Salaries	\$1,079,517.37	\$1,311,991.43		\$2,391,508.80
200 <u>Personnel Services – Employee Benefits</u>				
220 Social Security Contributions	77,129.75	95,914.02		173,043.77
230 PSERS Retirement Contributions	348,117.36	432,898.31		781,015.67
250 Unemployment Compensation	288.20	363.00		651.20
260 Workers' Compensation	4,161.95	5,114.65		9,276.60
270 Group Insurance – Self-Insurance	184,127.36	225,599.47		409,726.83
Total Personnel Services – Employee Benefits	\$613,824.62	\$759,889.45		\$1,373,714.07
300 <u>Purchased Professional and Technical Services</u>				
322 Professional Educational Services – lus	8,838.89	567.62		9,406.51
329 Professional Educational Services – Other	45,080.35	17,883.59		62,963.94
330 Other Professional Services			8,814.00	8,814.00
Total Purchased Professional and Technical Services	\$53,919.24	\$18,451.21	\$8,814.00	\$81,184.45
500 <u>Other Purchased Services</u>				
530 Communications	12.35	12.35		24.70
549 Other Advertising/Public Relations	2,997.23	2,997.23		5,994.46
550 Printing and Binding	576.16	576.16		1,152.32
580 Travel	1,382.35	1,954.63	707.04	4,044.02
Total Other Purchased Services	\$4,968.09	\$5,540.37	\$707.04	\$11,215.50
600 <u>Supplies</u>				
610 General Supplies	8,776.80	3,707.42		12,484.22
630 Food	474.49	474.49		948.98
640 Books and Periodicals	1,116.51	796.92		1,913.43
Total Supplies	\$10,367.80	\$4,978.83		\$15,346.63
700 <u>Property</u>				
752 Capital Equipment – Original and Additional	394.78	643.00		1,037.78
Total Property	\$394.78	\$643.00		\$1,037.78
Total 2100 Support Services – Students	\$1,762,991.90	\$2,101,494.29	\$9,521.04	\$3,874,007.23

LEA : 124158503 Unionville-Chadds Ford SD

Printed 10/30/2019 1:37:51 PM

General Fund (10)

2110 Supervision of Student Services	Elementary	Secondary	Federal	Total
100 <u>Personnel Services – Salaries</u>				
100 Personnel Services – Salaries	143,002.48	143,002.10		286,004.58
Total Personnel Services – Salaries	\$143,002.48	\$143,002.10		\$286,004.58
200 <u>Personnel Services – Employee Benefits</u>				
220 Social Security Contributions	10,341.84	10,341.84		20,683.68
230 PSERS Retirement Contributions	46,676.87	46,676.86		93,353.73
250 Unemployment Compensation	33.40	33.40		66.80
260 Workers' Compensation	617.23	617.23		1,234.46
270 Group Insurance – Self-Insurance	38,484.04	38,484.04		76,968.08
Total Personnel Services – Employee Benefits	\$96,153.38	\$96,153.37		\$192,306.75
300 <u>Purchased Professional and Technical Services</u>				
329 Professional Educational Services – Other	34,500.81	562.30		35,063.11
Total Purchased Professional and Technical Services	\$34,500.81	\$562.30		\$35,063.11
500 <u>Other Purchased Services</u>				
530 Communications	12.35	12.35		24.70
549 Other Advertising/Public Relations	2,997.23	2,997.23		5,994.46
550 Printing and Binding	576.16	576.16		1,152.32
580 Travel	428.64	1,158.75		1,587.39
Total Other Purchased Services	\$4,014.38	\$4,744.49		\$8,758.87
600 <u>Supplies</u>				
630 Food	474.49	474.49		948.98
640 Books and Periodicals	311.29	311.28		622.57
Total Supplies	\$785.78	\$785.77		\$1,571.55
700 <u>Property</u>				
752 Capital Equipment – Original and Additional	394.78	643.00		1,037.78
Total Property	\$394.78	\$643.00		\$1,037.78
Total 2110 Supervision of Student Services	\$278,851.61	\$245,891.03		\$524,742.64

LEA : 124158503 Unionville-Chadds Ford SD

Printed 10/30/2019 1:37:51 PM

General Fund (10)

2119 Supervision of Student Services – All Other Supervision	Elementary	Secondary	Federal	Total
100 Personnel Services – Salaries				
100 Personnel Services – Salaries	143,002.48	143,002.10		286,004.58
Total Personnel Services – Salaries	\$143,002.48	\$143,002.10		\$286,004.58
200 Personnel Services – Employee Benefits				
220 Social Security Contributions	10,341.84	10,341.84		20,683.68
230 PSERS Retirement Contributions	46,676.87	46,676.86		93,353.73
250 Unemployment Compensation	33.40	33.40		66.80
260 Workers' Compensation	617.23	617.23		1,234.46
270 Group Insurance – Self-Insurance	38,484.04	38,484.04		76,968.08
Total Personnel Services – Employee Benefits	\$96,153.38	\$96,153.37		\$192,306.75
300 Purchased Professional and Technical Services				
329 Professional Educational Services – Other	34,500.81	562.30		35,063.11
Total Purchased Professional and Technical Services	\$34,500.81	\$562.30		\$35,063.11
500 Other Purchased Services				
530 Communications	12.35	12.35		24.70
549 Other Advertising/Public Relations	2,997.23	2,997.23		5,994.46
550 Printing and Binding	576.16	576.16		1,152.32
580 Travel	428.64	1,158.75		1,587.39
Total Other Purchased Services	\$4,014.38	\$4,744.49		\$8,758.87
600 Supplies				
630 Food	474.49	474.49		948.98
640 Books and Periodicals	311.29	311.28		622.57
Total Supplies	\$785.78	\$785.77		\$1,571.55
700 Property				
752 Capital Equipment – Original and Additional	394.78	643.00		1,037.78
Total Property	\$394.78	\$643.00		\$1,037.78
Total 2119 Supervision of Student Services – All Other Supervision	\$278,851.61	\$245,891.03		\$524,742.64

LEA : 124158503 Unionville-Chadds Ford SD

Printed 10/30/2019 1:37:51 PM

General Fund (10)				
2120 Guidance Services	<u>Elementary</u>	<u>Secondary</u>	<u>Federal</u>	<u>Total</u>
100 <u>Personnel Services – Salaries</u>				
100 Personnel Services – Salaries	687,246.60	934,583.37		1,621,829.97
Total Personnel Services – Salaries	\$687,246.60	\$934,583.37		\$1,621,829.97
200 <u>Personnel Services – Employee Benefits</u>				
220 Social Security Contributions	49,308.74	68,093.01		117,401.75
230 PSERS Retirement Contributions	222,550.02	307,330.98		529,881.00
250 Unemployment Compensation	196.36	271.16		467.52
260 Workers' Compensation	2,500.87	3,453.58		5,954.45
270 Group Insurance – Self-Insurance	108,864.31	150,336.43		259,200.74
Total Personnel Services – Employee Benefits	\$383,420.30	\$529,485.16		\$912,905.46
300 <u>Purchased Professional and Technical Services</u>				
329 Professional Educational Services – Other	10,579.54	13,521.29		24,100.83
330 Other Professional Services			8,814.00	8,814.00
Total Purchased Professional and Technical Services	\$10,579.54	\$13,521.29	\$8,814.00	\$32,914.83
500 <u>Other Purchased Services</u>				
580 Travel	506.14	506.14	707.04	1,719.32
Total Other Purchased Services	\$506.14	\$506.14	\$707.04	\$1,719.32
600 <u>Supplies</u>				
640 Books and Periodicals	805.22	485.64		1,290.86
Total Supplies	\$805.22	\$485.64		\$1,290.86
Total 2120 Guidance Services	\$1,082,557.80	\$1,478,581.60	\$9,521.04	\$2,570,660.44

LEA : 124158503 Unionville-Chadds Ford SD

Printed 10/30/2019 1:37:51 PM

General Fund (10)				
2140 Psychological Services	<u>Elementary</u>	<u>Secondary</u>	<u>Federal</u>	<u>Total</u>
100 <u>Personnel Services – Salaries</u>				
100 Personnel Services – Salaries	249,268.29	234,405.96		483,674.25
Total Personnel Services – Salaries	\$249,268.29	\$234,405.96		\$483,674.25
200 <u>Personnel Services – Employee Benefits</u>				
220 Social Security Contributions	17,479.17	17,479.17		34,958.34
230 PSERS Retirement Contributions	78,890.47	78,890.47		157,780.94
250 Unemployment Compensation	58.44	58.44		116.88
260 Workers' Compensation	1,043.85	1,043.84		2,087.69
270 Group Insurance – Self-Insurance	36,779.01	36,779.00		73,558.01
Total Personnel Services – Employee Benefits	\$134,250.94	\$134,250.92		\$268,501.86
300 <u>Purchased Professional and Technical Services</u>				
322 Professional Educational Services – Ius	8,838.89	567.62		9,406.51
329 Professional Educational Services – Other		3,800.00		3,800.00
Total Purchased Professional and Technical Services	\$8,838.89	\$4,367.62		\$13,206.51
500 <u>Other Purchased Services</u>				
580 Travel	447.57	289.74		737.31
Total Other Purchased Services	\$447.57	\$289.74		\$737.31
600 <u>Supplies</u>				
610 General Supplies	8,776.80	3,707.42		12,484.22
Total Supplies	\$8,776.80	\$3,707.42		\$12,484.22
Total 2140 Psychological Services	\$401,582.49	\$377,021.66		\$778,604.15

LEA : 124158503 Unionville-Chadds Ford SD

Printed 10/30/2019 1:37:51 PM

General Fund (10)

2200 Support Services – Instructional Staff	Elementary	Secondary	Federal	Total
100 <u>Personnel Services – Salaries</u>				
100 Personnel Services – Salaries	1,076,586.53	807,505.89	245.70	1,884,338.12
Total Personnel Services – Salaries	\$1,076,586.53	\$807,505.89	\$245.70	\$1,884,338.12
200 <u>Personnel Services – Employee Benefits</u>				
220 Social Security Contributions	78,015.93	58,612.90		136,628.83
230 PSERS Retirement Contributions	352,117.09	264,543.43		616,660.52
240 Tuition Reimbursement	78,207.03	158,783.97		236,991.00
250 Unemployment Compensation	264.36	169.78		434.14
260 Workers' Compensation	5,430.82	4,045.46		9,476.28
270 Group Insurance – Self-Insurance	162,755.59	104,231.30		266,986.89
Total Personnel Services – Employee Benefits	\$676,790.82	\$590,386.84		\$1,267,177.66
300 <u>Purchased Professional and Technical Services</u>				
329 Professional Educational Services – Other	25,144.91	3,949.07	49,784.28	78,878.26
Total Purchased Professional and Technical Services	\$25,144.91	\$3,949.07	\$49,784.28	\$78,878.26
400 <u>Purchased Property Services</u>				
430 Repairs and Maintenance Services	269,101.03	12,153.00		281,254.03
Total Purchased Property Services	\$269,101.03	\$12,153.00		\$281,254.03
500 <u>Other Purchased Services</u>				
530 Communications	(121,477.77)	1,941.23		(119,536.54)
580 Travel	14,286.02	2,774.71	15,628.49	32,689.22
591 Services Purchased Locally	2,968.99	2,772.96		5,741.95
Total Other Purchased Services	(\$104,222.76)	\$7,488.90	\$15,628.49	(\$81,105.37)
600 <u>Supplies</u>				
610 General Supplies	68,200.53	53,830.22		122,030.75
630 Food	2,880.15	1,946.41		4,826.56
640 Books and Periodicals	20,836.50	45,021.08		65,857.58
Total Supplies	\$91,917.18	\$100,797.71		\$192,714.89
700 <u>Property</u>				
752 Capital Equipment – Original and Additional	54,933.61	60,659.77		115,593.38
756 Capitalized Technology Equipment – Original	473,230.55	242,156.86		715,387.41
762 Capitalized Equipment - Replacement	4,994.29			4,994.29
766 Capitalized Technology Equipment – Replacement	355,809.00	95,876.00		451,685.00
Total Property	\$888,967.45	\$398,692.63		\$1,287,660.08
Total 2200 Support Services – Instructional Staff	\$2,924,285.16	\$1,920,974.04	\$65,658.47	\$4,910,917.67

LEA : 124158503 Unionville-Chadds Ford SD

Printed 10/30/2019 1:37:51 PM

General Fund (10)				
2220 Technology Support Services	<u>Elementary</u>	<u>Secondary</u>	<u>Federal</u>	<u>Total</u>
100 <u>Personnel Services – Salaries</u>				
100 Personnel Services – Salaries	403,723.30	252,271.11		655,994.41
Total Personnel Services – Salaries	\$403,723.30	\$252,271.11		\$655,994.41
200 <u>Personnel Services – Employee Benefits</u>				
220 Social Security Contributions	29,440.74	18,044.33		47,485.07
230 PSERS Retirement Contributions	132,877.85	81,441.27		214,319.12
250 Unemployment Compensation	103.52	63.45		166.97
260 Workers' Compensation	2,217.31	1,358.99		3,576.30
270 Group Insurance – Self-Insurance	60,910.26	37,332.10		98,242.36
Total Personnel Services – Employee Benefits	\$225,549.68	\$138,240.14		\$363,789.82
400 <u>Purchased Property Services</u>				
430 Repairs and Maintenance Services	3,233.45			3,233.45
Total Purchased Property Services	\$3,233.45			\$3,233.45
600 <u>Supplies</u>				
610 General Supplies	22,575.87			22,575.87
Total Supplies	\$22,575.87			\$22,575.87
700 <u>Property</u>				
752 Capital Equipment – Original and Additional	14,737.06	5,214.65		19,951.71
762 Capitalized Equipment - Replacement	4,994.29			4,994.29
Total Property	\$19,731.35	\$5,214.65		\$24,946.00
Total 2220 Technology Support Services	\$674,813.65	\$395,725.90		\$1,070,539.55

LEA : 124158503 Unionville-Chadds Ford SD

Printed 10/30/2019 1:37:51 PM

General Fund (10)

2240 Computer-Assisted Instruction Support Services	<u>Elementary</u>	<u>Secondary</u>	<u>Federal</u>	<u>Total</u>
300 <u>Purchased Professional and Technical Services</u>				
329 Professional Educational Services – Other	25,144.91	241.67		25,386.58
Total Purchased Professional and Technical Services	\$25,144.91	\$241.67		\$25,386.58
400 <u>Purchased Property Services</u>				
430 Repairs and Maintenance Services	265,867.58	12,153.00		278,020.58
Total Purchased Property Services	\$265,867.58	\$12,153.00		\$278,020.58
500 <u>Other Purchased Services</u>				
530 Communications	(121,956.38)	1,941.23		(120,015.15)
580 Travel	11,230.84			11,230.84
Total Other Purchased Services	(\$110,725.54)	\$1,941.23		(\$108,784.31)
600 <u>Supplies</u>				
610 General Supplies	40,439.73	47,056.68		87,496.41
630 Food	1,166.40			1,166.40
Total Supplies	\$41,606.13	\$47,056.68		\$88,662.81
700 <u>Property</u>				
756 Capitalized Technology Equipment – Original	473,230.55	242,156.86		715,387.41
766 Capitalized Technology Equipment – Replacement	355,809.00	95,876.00		451,685.00
Total Property	\$829,039.55	\$338,032.86		\$1,167,072.41
Total 2240 Computer-Assisted Instruction Support Services	\$1,050,932.63	\$399,425.44		\$1,450,358.07

LEA : 124158503 Unionville-Chadds Ford SD

Printed 10/30/2019 1:37:51 PM

General Fund (10)				
2250 School Library Services	Elementary	Secondary	Federal	Total
100 Personnel Services – Salaries				
100 Personnel Services – Salaries	343,309.12	190,610.76		533,919.88
Total Personnel Services – Salaries	\$343,309.12	\$190,610.76		\$533,919.88
200 Personnel Services – Employee Benefits				
220 Social Security Contributions	24,797.11	13,948.38		38,745.49
230 PSERS Retirement Contributions	111,919.28	62,954.60		174,873.88
250 Unemployment Compensation	128.24	72.13		200.37
260 Workers' Compensation	1,591.72	895.35		2,487.07
270 Group Insurance – Self-Insurance	82,096.81	46,179.45		128,276.26
Total Personnel Services – Employee Benefits	\$220,533.16	\$124,049.91		\$344,583.07
600 Supplies				
640 Books and Periodicals	20,164.71	44,644.08		64,808.79
Total Supplies	\$20,164.71	\$44,644.08		\$64,808.79
Total 2250 School Library Services	\$584,006.99	\$359,304.75		\$943,311.74

LEA : 124158503 Unionville-Chadds Ford SD

Printed 10/30/2019 1:37:51 PM

General Fund (10)

2260 Instruction and Curriculum Development Services	Elementary	Secondary	Federal	Total
100 <u>Personnel Services – Salaries</u>				
100 Personnel Services – Salaries	302,867.11	316,669.27		619,536.38
Total Personnel Services – Salaries	\$302,867.11	\$316,669.27		\$619,536.38
200 <u>Personnel Services – Employee Benefits</u>				
220 Social Security Contributions	21,893.24	22,969.96		44,863.20
230 PSERS Retirement Contributions	98,812.94	103,672.60		202,485.54
250 Unemployment Compensation	32.60	34.20		66.80
260 Workers' Compensation	1,523.76	1,598.69		3,122.45
270 Group Insurance – Self-Insurance	19,748.52	20,719.75		40,468.27
Total Personnel Services – Employee Benefits	\$142,011.06	\$148,995.20		\$291,006.26
300 <u>Purchased Professional and Technical Services</u>				
329 Professional Educational Services – Other		3,297.40		3,297.40
Total Purchased Professional and Technical Services		\$3,297.40		\$3,297.40
500 <u>Other Purchased Services</u>				
530 Communications	478.61			478.61
580 Travel	2,490.03	1,146.48		3,636.51
Total Other Purchased Services	\$2,968.64	\$1,146.48		\$4,115.12
600 <u>Supplies</u>				
610 General Supplies	998.99	1,177.48		2,176.47
630 Food	934.75	1,427.53		2,362.28
640 Books and Periodicals	671.79	377.00		1,048.79
Total Supplies	\$2,605.53	\$2,982.01		\$5,587.54
700 <u>Property</u>				
752 Capital Equipment – Original and Additional	40,196.55	55,445.12		95,641.67
Total Property	\$40,196.55	\$55,445.12		\$95,641.67
Total 2260 Instruction and Curriculum Development Services	\$490,648.89	\$528,535.48		\$1,019,184.37

LEA : 124158503 Unionville-Chadds Ford SD

Printed 10/30/2019 1:37:51 PM

General Fund (10)

2270 Instructional Staff Professional Development Services	Elementary	Secondary	Federal	Total
100 <u>Personnel Services – Salaries</u>				
100 Personnel Services – Salaries	12,579.00	22,029.00	245.70	34,853.70
Total Personnel Services – Salaries	\$12,579.00	\$22,029.00	\$245.70	\$34,853.70
200 <u>Personnel Services – Employee Benefits</u>				
220 Social Security Contributions	865.22	1,756.66		2,621.88
230 PSERS Retirement Contributions	3,905.08	7,928.49		11,833.57
240 Tuition Reimbursement	78,207.03	158,783.97		236,991.00
260 Workers' Compensation	59.91	121.63		181.54
Total Personnel Services – Employee Benefits	\$83,037.24	\$168,590.75		\$251,627.99
300 <u>Purchased Professional and Technical Services</u>				
329 Professional Educational Services – Other		410.00	49,724.28	50,134.28
Total Purchased Professional and Technical Services		\$410.00	\$49,724.28	\$50,134.28
500 <u>Other Purchased Services</u>				
580 Travel	565.15	1,628.23	15,628.49	17,821.87
591 Services Purchased Locally	2,968.99	2,772.96		5,741.95
Total Other Purchased Services	\$3,534.14	\$4,401.19	\$15,628.49	\$23,563.82
600 <u>Supplies</u>				
610 General Supplies	578.67	936.62		1,515.29
630 Food	543.82	299.88		843.70
Total Supplies	\$1,122.49	\$1,236.50		\$2,358.99
Total 2270 Instructional Staff Professional Development Services	\$100,272.87	\$196,667.44	\$65,598.47	\$362,538.78

LEA : 124158503 Unionville-Chadds Ford SD

Printed 10/30/2019 1:37:51 PM

General Fund (10)

2280 Nonpublic Support Services

300 Purchased Professional and Technical Services

	<u>Elementary</u>	<u>Secondary</u>	<u>Federal</u>	<u>Total</u>
329 Professional Educational Services – Other			60.00	60.00
Total Purchased Professional and Technical Services			\$60.00	\$60.00
Total 2280 Nonpublic Support Services			\$60.00	\$60.00

LEA : 124158503 Unionville-Chadds Ford SD

Printed 10/30/2019 1:37:51 PM

General Fund (10)				
2290 Other Instructional Staff Services	<u>Elementary</u>	<u>Secondary</u>	<u>Federal</u>	<u>Total</u>
100 <u>Personnel Services – Salaries</u>				
100 Personnel Services – Salaries	14,108.00	25,925.75		40,033.75
Total Personnel Services – Salaries	\$14,108.00	\$25,925.75		\$40,033.75
200 <u>Personnel Services – Employee Benefits</u>				
220 Social Security Contributions	1,019.62	1,893.57		2,913.19
230 PSERS Retirement Contributions	4,601.94	8,546.47		13,148.41
260 Workers’ Compensation	38.12	70.80		108.92
Total Personnel Services – Employee Benefits	\$5,659.68	\$10,510.84		\$16,170.52
600 <u>Supplies</u>				
610 General Supplies	3,607.27	4,659.44		8,266.71
630 Food	235.18	219.00		454.18
Total Supplies	\$3,842.45	\$4,878.44		\$8,720.89
Total 2290 Other Instructional Staff Services	\$23,610.13	\$41,315.03		\$64,925.16

LEA : 124158503 Unionville-Chadds Ford SD

Printed 10/30/2019 1:37:51 PM

General Fund (10)				
2300 Support Services – Administration	<u>Elementary</u>	<u>Secondary</u>	<u>Federal</u>	<u>Total</u>
100 <u>Personnel Services – Salaries</u>				
100 Personnel Services – Salaries	950,150.95	909,955.56		2,297,713.08
Total Personnel Services – Salaries	\$950,150.95	\$909,955.56		\$2,297,713.08
200 <u>Personnel Services – Employee Benefits</u>				
220 Social Security Contributions	68,640.70	65,948.90		166,386.26
230 PSERS Retirement Contributions	309,802.88	297,653.75		750,774.32
250 Unemployment Compensation	204.37	196.35		450.82
260 Workers' Compensation	4,573.67	4,394.31		10,565.51
270 Group Insurance – Self-Insurance	152,330.02	146,356.29		345,250.08
Total Personnel Services – Employee Benefits	\$535,551.64	\$514,549.60		\$1,273,426.99
300 <u>Purchased Professional and Technical Services</u>				
329 Professional Educational Services – Other	3,020.92	3,464.79		20,074.67
330 Other Professional Services				111,356.67
Total Purchased Professional and Technical Services	\$3,020.92	\$3,464.79		\$131,431.34
400 <u>Purchased Property Services</u>				
430 Repairs and Maintenance Services		14,349.14		14,349.14
Total Purchased Property Services		\$14,349.14		\$14,349.14
500 <u>Other Purchased Services</u>				
520 Insurance – General				3,154.00
530 Communications	30,681.87	13,264.34		43,946.21
549 Other Advertising/Public Relations				7,441.17
550 Printing and Binding	1,061.91	3,358.47		4,420.38
580 Travel				7,694.96
Total Other Purchased Services	\$31,743.78	\$16,622.81		\$66,656.72
600 <u>Supplies</u>				
610 General Supplies	7,716.45	12,122.39		21,777.54
630 Food	2,241.21	11,947.48		16,087.16
640 Books and Periodicals				4,666.94
Total Supplies	\$9,957.66	\$24,069.87		\$42,531.64
800 <u>Other Objects</u>				
810 Dues and Fees				30,006.65
Total Other Objects				\$30,006.65
Total 2300 Support Services – Administration	\$1,530,424.95	\$1,483,011.77		\$3,856,115.56

LEA : 124158503 Unionville-Chadds Ford SD

Printed 10/30/2019 1:37:51 PM

General Fund (10)				
2310 Board Services	<u>Elementary</u>	<u>Secondary</u>	<u>Federal</u>	<u>Total</u>
300 <u>Purchased Professional and Technical Services</u>				
329 Professional Educational Services – Other				9,000.00
Total Purchased Professional and Technical Services				\$9,000.00
500 <u>Other Purchased Services</u>				
520 Insurance – General				1,057.00
549 Other Advertising/Public Relations				7,441.17
580 Travel				912.40
Total Other Purchased Services				\$9,410.57
600 <u>Supplies</u>				
630 Food				1,071.92
Total Supplies				\$1,071.92
800 <u>Other Objects</u>				
810 Dues and Fees				20,179.15
Total Other Objects				\$20,179.15
Total 2310 Board Services				\$39,661.64

LEA : 124158503 Unionville-Chadds Ford SD

Printed 10/30/2019 1:37:51 PM

General Fund (10)

2330 Tax Assessment and Collection Services	<u>Elementary</u>	<u>Secondary</u>	<u>Federal</u>	<u>Total</u>
100 <u>Personnel Services – Salaries</u>				
100 Personnel Services – Salaries				560.50
Total Personnel Services – Salaries				\$560.50
200 <u>Personnel Services – Employee Benefits</u>				
220 Social Security Contributions				42.84
Total Personnel Services – Employee Benefits				\$42.84
300 <u>Purchased Professional and Technical Services</u>				
329 Professional Educational Services – Other				4,078.96
Total Purchased Professional and Technical Services				\$4,078.96
500 <u>Other Purchased Services</u>				
520 Insurance – General				2,097.00
Total Other Purchased Services				\$2,097.00
600 <u>Supplies</u>				
610 General Supplies				1,938.70
Total Supplies				\$1,938.70
Total 2330 Tax Assessment and Collection Services				\$8,718.00

LEA : 124158503 Unionville-Chadds Ford SD

Printed 10/30/2019 1:37:51 PM

General Fund (10)

2340 Staff Relations and Negotiations Services	<u>Elementary</u>	<u>Secondary</u>	<u>Federal</u>	<u>Total</u>
300 <u>Purchased Professional and Technical Services</u>				
330 Other Professional Services				300.00
Total Purchased Professional and Technical Services				\$300.00
Total 2340 Staff Relations and Negotiations Services				\$300.00

LEA : 124158503 Unionville-Chadds Ford SD

Printed 10/30/2019 1:37:51 PM

General Fund (10)

2350 Legal and Accounting Services	<u>Elementary</u>	<u>Secondary</u>	<u>Federal</u>	<u>Total</u>
300 <u>Purchased Professional and Technical Services</u>				
330 Other Professional Services				107,766.67
Total Purchased Professional and Technical Services				\$107,766.67
Total 2350 Legal and Accounting Services				\$107,766.67

LEA : 124158503 Unionville-Chadds Ford SD

Printed 10/30/2019 1:37:51 PM

General Fund (10)				
2360 Office of the Superintendent / Executive Director Services	<u>Elementary</u>	<u>Secondary</u>	<u>Federal</u>	<u>Total</u>
100 <u>Personnel Services – Salaries</u>				
100 Personnel Services – Salaries				437,046.07
Total Personnel Services – Salaries				\$437,046.07
200 <u>Personnel Services – Employee Benefits</u>				
220 Social Security Contributions				31,753.82
230 PSERS Retirement Contributions				143,317.69
250 Unemployment Compensation				50.10
260 Workers' Compensation				1,597.53
270 Group Insurance – Self-Insurance				46,563.77
Total Personnel Services – Employee Benefits				\$223,282.91
300 <u>Purchased Professional and Technical Services</u>				
329 Professional Educational Services – Other				510.00
330 Other Professional Services				3,290.00
Total Purchased Professional and Technical Services				\$3,800.00
500 <u>Other Purchased Services</u>				
530 Communications	7,532.31	7,532.31		15,064.62
580 Travel				6,782.56
Total Other Purchased Services	\$7,532.31	\$7,532.31		\$21,847.18
600 <u>Supplies</u>				
630 Food				826.55
640 Books and Periodicals				4,666.94
Total Supplies				\$5,493.49
800 <u>Other Objects</u>				
810 Dues and Fees				9,827.50
Total Other Objects				\$9,827.50
Total 2360 Office of the Superintendent / Executive Director Services	\$7,532.31	\$7,532.31		\$701,297.15

LEA : 124158503 Unionville-Chadds Ford SD

Printed 10/30/2019 1:37:51 PM

General Fund (10)

2380 Office of the Principal Services	Elementary	Secondary	Federal	Total
100 <u>Personnel Services – Salaries</u>				
100 Personnel Services – Salaries	950,150.95	909,955.56		1,860,106.51
Total Personnel Services – Salaries	\$950,150.95	\$909,955.56		\$1,860,106.51
200 <u>Personnel Services – Employee Benefits</u>				
220 Social Security Contributions	68,640.70	65,948.90		134,589.60
230 PSERS Retirement Contributions	309,802.88	297,653.75		607,456.63
250 Unemployment Compensation	204.37	196.35		400.72
260 Workers' Compensation	4,573.67	4,394.31		8,967.98
270 Group Insurance – Self-Insurance	152,330.02	146,356.29		298,686.31
Total Personnel Services – Employee Benefits	\$535,551.64	\$514,549.60		\$1,050,101.24
300 <u>Purchased Professional and Technical Services</u>				
329 Professional Educational Services – Other	3,020.92	3,464.79		6,485.71
Total Purchased Professional and Technical Services	\$3,020.92	\$3,464.79		\$6,485.71
400 <u>Purchased Property Services</u>				
430 Repairs and Maintenance Services		14,349.14		14,349.14
Total Purchased Property Services		\$14,349.14		\$14,349.14
500 <u>Other Purchased Services</u>				
530 Communications	23,149.56	5,732.03		28,881.59
550 Printing and Binding	1,061.91	3,358.47		4,420.38
Total Other Purchased Services	\$24,211.47	\$9,090.50		\$33,301.97
600 <u>Supplies</u>				
610 General Supplies	7,716.45	12,122.39		19,838.84
630 Food	2,241.21	11,947.48		14,188.69
Total Supplies	\$9,957.66	\$24,069.87		\$34,027.53
Total 2380 Office of the Principal Services	\$1,522,892.64	\$1,475,479.46		\$2,998,372.10

LEA : 124158503 Unionville-Chadds Ford SD

Printed 10/30/2019 1:37:51 PM

General Fund (10)				
2400 Support Services – Pupil Health	<u>Elementary</u>	<u>Secondary</u>	<u>Federal</u>	<u>Total</u>
100 <u>Personnel Services – Salaries</u>				
100 Personnel Services – Salaries				433,534.89
Total Personnel Services – Salaries				\$433,534.89
200 <u>Personnel Services – Employee Benefits</u>				
220 Social Security Contributions				31,462.50
230 PSERS Retirement Contributions				142,002.85
250 Unemployment Compensation				166.97
260 Workers' Compensation				2,033.22
270 Group Insurance – Self-Insurance				73,693.90
Total Personnel Services – Employee Benefits				\$249,359.44
300 <u>Purchased Professional and Technical Services</u>				
329 Professional Educational Services – Other				11,989.45
Total Purchased Professional and Technical Services				\$11,989.45
400 <u>Purchased Property Services</u>				
430 Repairs and Maintenance Services				210.00
Total Purchased Property Services				\$210.00
500 <u>Other Purchased Services</u>				
580 Travel				780.62
Total Other Purchased Services				\$780.62
600 <u>Supplies</u>				
610 General Supplies				7,882.22
640 Books and Periodicals				10,850.00
Total Supplies				\$18,732.22
700 <u>Property</u>				
752 Capital Equipment – Original and Additional				743.49
762 Capitalized Equipment - Replacement				1,090.94
Total Property				\$1,834.43
Total 2400 Support Services – Pupil Health				\$716,441.05

LEA : 124158503 Unionville-Chadds Ford SD

Printed 10/30/2019 1:37:51 PM

General Fund (10)

2440 Nursing Services

	<u>Elementary</u>	<u>Secondary</u>	<u>Federal</u>	<u>Total</u>
100 <u>Personnel Services – Salaries</u>				
100 Personnel Services – Salaries				433,534.89
Total Personnel Services – Salaries				\$433,534.89
200 <u>Personnel Services – Employee Benefits</u>				
220 Social Security Contributions				31,462.50
230 PSERS Retirement Contributions				142,002.85
250 Unemployment Compensation				166.97
260 Workers' Compensation				2,033.22
270 Group Insurance – Self-Insurance				73,693.90
Total Personnel Services – Employee Benefits				\$249,359.44
300 <u>Purchased Professional and Technical Services</u>				
329 Professional Educational Services – Other				11,989.45
Total Purchased Professional and Technical Services				\$11,989.45
400 <u>Purchased Property Services</u>				
430 Repairs and Maintenance Services				210.00
Total Purchased Property Services				\$210.00
500 <u>Other Purchased Services</u>				
580 Travel				780.62
Total Other Purchased Services				\$780.62
600 <u>Supplies</u>				
610 General Supplies				7,882.22
640 Books and Periodicals				10,850.00
Total Supplies				\$18,732.22
700 <u>Property</u>				
752 Capital Equipment – Original and Additional				743.49
762 Capitalized Equipment - Replacement				1,090.94
Total Property				\$1,834.43
Total 2440 Nursing Services				\$716,441.05

LEA : 124158503 Unionville-Chadds Ford SD

Printed 10/30/2019 1:37:51 PM

General Fund (10)				
2500 Support Services – Business	<u>Elementary</u>	<u>Secondary</u>	<u>Federal</u>	<u>Total</u>
100 <u>Personnel Services – Salaries</u>				
100 Personnel Services – Salaries				628,028.55
Total Personnel Services – Salaries				\$628,028.55
200 <u>Personnel Services – Employee Benefits</u>				
220 Social Security Contributions				45,445.84
230 PSERS Retirement Contributions				205,115.23
250 Unemployment Compensation				116.88
260 Workers' Compensation				2,704.91
270 Group Insurance – Self-Insurance				84,458.41
Total Personnel Services – Employee Benefits				\$337,841.27
300 <u>Purchased Professional and Technical Services</u>				
329 Professional Educational Services – Other				59,144.20
Total Purchased Professional and Technical Services				\$59,144.20
400 <u>Purchased Property Services</u>				
430 Repairs and Maintenance Services				36,195.85
Total Purchased Property Services				\$36,195.85
500 <u>Other Purchased Services</u>				
530 Communications				3,238.64
580 Travel				4,860.01
591 Services Purchased Locally				18,498.90
Total Other Purchased Services				\$26,597.55
600 <u>Supplies</u>				
610 General Supplies				27,236.02
630 Food				434.33
Total Supplies				\$27,670.35
800 <u>Other Objects</u>				
810 Dues and Fees				4,704.38
Total Other Objects				\$4,704.38
Total 2500 Support Services – Business				\$1,120,182.15

LEA : 124158503 Unionville-Chadds Ford SD

Printed 10/30/2019 1:37:51 PM

General Fund (10)				
2510 Fiscal Services	<u>Elementary</u>	<u>Secondary</u>	<u>Federal</u>	<u>Total</u>
100 <u>Personnel Services – Salaries</u>				
100 Personnel Services – Salaries				624,848.55
Total Personnel Services – Salaries				\$624,848.55
200 <u>Personnel Services – Employee Benefits</u>				
220 Social Security Contributions				45,202.57
230 PSERS Retirement Contributions				205,115.23
250 Unemployment Compensation				116.88
260 Workers' Compensation				2,704.91
270 Group Insurance – Self-Insurance				84,458.41
Total Personnel Services – Employee Benefits				\$337,598.00
300 <u>Purchased Professional and Technical Services</u>				
329 Professional Educational Services – Other				59,144.20
Total Purchased Professional and Technical Services				\$59,144.20
400 <u>Purchased Property Services</u>				
430 Repairs and Maintenance Services				36,195.85
Total Purchased Property Services				\$36,195.85
500 <u>Other Purchased Services</u>				
530 Communications				3,238.64
580 Travel				4,860.01
Total Other Purchased Services				\$8,098.65
600 <u>Supplies</u>				
610 General Supplies				27,236.02
630 Food				434.33
Total Supplies				\$27,670.35
800 <u>Other Objects</u>				
810 Dues and Fees				4,704.38
Total Other Objects				\$4,704.38
Total 2510 Fiscal Services				\$1,098,259.98

LEA : 124158503 Unionville-Chadds Ford SD

Printed 10/30/2019 1:37:51 PM

General Fund (10)

2511 Supervision of Fiscal Services - Head of Component	<u>Elementary</u>	<u>Secondary</u>	<u>Federal</u>	<u>Total</u>
100 <u>Personnel Services – Salaries</u>				
100 Personnel Services – Salaries				330,118.80
Total Personnel Services – Salaries				\$330,118.80
200 <u>Personnel Services – Employee Benefits</u>				
220 Social Security Contributions				22,655.74
230 PSERS Retirement Contributions				112,587.07
250 Unemployment Compensation				61.75
260 Workers' Compensation				1,429.05
270 Group Insurance – Self-Insurance				44,620.91
Total Personnel Services – Employee Benefits				\$181,354.52
300 <u>Purchased Professional and Technical Services</u>				
329 Professional Educational Services – Other				24,808.00
Total Purchased Professional and Technical Services				\$24,808.00
400 <u>Purchased Property Services</u>				
430 Repairs and Maintenance Services				9,048.96
Total Purchased Property Services				\$9,048.96
500 <u>Other Purchased Services</u>				
530 Communications				847.16
580 Travel				4,163.11
Total Other Purchased Services				\$5,010.27
600 <u>Supplies</u>				
610 General Supplies				6,809.01
630 Food				434.33
Total Supplies				\$7,243.34
800 <u>Other Objects</u>				
810 Dues and Fees				1,176.10
Total Other Objects				\$1,176.10
Total 2511 Supervision of Fiscal Services - Head of Component				\$558,759.99

LEA : 124158503 Unionville-Chadds Ford SD

Printed 10/30/2019 1:37:51 PM

General Fund (10)

2513 Receiving and Disbursing Funds Services	<u>Elementary</u>	<u>Secondary</u>	<u>Federal</u>	<u>Total</u>
100 <u>Personnel Services – Salaries</u>				
100 Personnel Services – Salaries				162,493.75
Total Personnel Services – Salaries				\$162,493.75
200 <u>Personnel Services – Employee Benefits</u>				
220 Social Security Contributions				12,430.77
230 PSERS Retirement Contributions				48,321.67
250 Unemployment Compensation				30.39
260 Workers' Compensation				703.42
270 Group Insurance – Self-Insurance				21,963.66
Total Personnel Services – Employee Benefits				\$83,449.91
300 <u>Purchased Professional and Technical Services</u>				
329 Professional Educational Services – Other				3,300.00
Total Purchased Professional and Technical Services				\$3,300.00
400 <u>Purchased Property Services</u>				
430 Repairs and Maintenance Services				9,048.96
Total Purchased Property Services				\$9,048.96
500 <u>Other Purchased Services</u>				
530 Communications				797.16
580 Travel				534.90
Total Other Purchased Services				\$1,332.06
600 <u>Supplies</u>				
610 General Supplies				6,809.01
Total Supplies				\$6,809.01
800 <u>Other Objects</u>				
810 Dues and Fees				1,176.10
Total Other Objects				\$1,176.10
Total 2513 Receiving and Disbursing Funds Services				\$267,609.79

LEA : 124158503 Unionville-Chadds Ford SD

Printed 10/30/2019 1:37:51 PM

General Fund (10)				
2514 Payroll Services	<u>Elementary</u>	<u>Secondary</u>	<u>Federal</u>	<u>Total</u>
100 <u>Personnel Services – Salaries</u>				
100 Personnel Services – Salaries				58,999.20
Total Personnel Services – Salaries				\$58,999.20
200 <u>Personnel Services – Employee Benefits</u>				
220 Social Security Contributions				4,513.44
230 PSERS Retirement Contributions				19,723.43
250 Unemployment Compensation				11.04
260 Workers' Compensation				255.40
270 Group Insurance – Self-Insurance				7,974.70
Total Personnel Services – Employee Benefits				\$32,478.01
300 <u>Purchased Professional and Technical Services</u>				
329 Professional Educational Services – Other				8,718.00
Total Purchased Professional and Technical Services				\$8,718.00
400 <u>Purchased Property Services</u>				
430 Repairs and Maintenance Services				9,048.96
Total Purchased Property Services				\$9,048.96
500 <u>Other Purchased Services</u>				
530 Communications				797.16
580 Travel				162.00
Total Other Purchased Services				\$959.16
600 <u>Supplies</u>				
610 General Supplies				6,809.00
Total Supplies				\$6,809.00
800 <u>Other Objects</u>				
810 Dues and Fees				1,176.09
Total Other Objects				\$1,176.09
Total 2514 Payroll Services				\$118,188.42

LEA : 124158503 Unionville-Chadds Ford SD

Printed 10/30/2019 1:37:51 PM

General Fund (10)				
2515 Financial Accounting Services	<u>Elementary</u>	<u>Secondary</u>	<u>Federal</u>	<u>Total</u>
100 <u>Personnel Services – Salaries</u>				
100 Personnel Services – Salaries				73,236.80
Total Personnel Services – Salaries				\$73,236.80
200 <u>Personnel Services – Employee Benefits</u>				
220 Social Security Contributions				5,602.62
230 PSERS Retirement Contributions				24,483.06
250 Unemployment Compensation				13.70
260 Workers' Compensation				317.04
270 Group Insurance – Self-Insurance				9,899.14
Total Personnel Services – Employee Benefits				\$40,315.56
300 <u>Purchased Professional and Technical Services</u>				
329 Professional Educational Services – Other				22,318.20
Total Purchased Professional and Technical Services				\$22,318.20
400 <u>Purchased Property Services</u>				
430 Repairs and Maintenance Services				9,048.97
Total Purchased Property Services				\$9,048.97
500 <u>Other Purchased Services</u>				
530 Communications				797.16
Total Other Purchased Services				\$797.16
600 <u>Supplies</u>				
610 General Supplies				6,809.00
Total Supplies				\$6,809.00
800 <u>Other Objects</u>				
810 Dues and Fees				1,176.09
Total Other Objects				\$1,176.09
Total 2515 Financial Accounting Services				\$153,701.78

LEA : 124158503 Unionville-Chadds Ford SD

Printed 10/30/2019 1:37:51 PM

General Fund (10)

2590 Other Support Services – Business	<u>Elementary</u>	<u>Secondary</u>	<u>Federal</u>	<u>Total</u>
100 <u>Personnel Services – Salaries</u>				
100 Personnel Services – Salaries				3,180.00
Total Personnel Services – Salaries				\$3,180.00
200 <u>Personnel Services – Employee Benefits</u>				
220 Social Security Contributions				243.27
Total Personnel Services – Employee Benefits				\$243.27
500 <u>Other Purchased Services</u>				
591 Services Purchased Locally				18,498.90
Total Other Purchased Services				\$18,498.90
Total 2590 Other Support Services – Business				\$21,922.17

LEA : 124158503 Unionville-Chadds Ford SD

Printed 10/30/2019 1:37:51 PM

General Fund (10)

2600 Operation and Maintenance of Plant Services	Elementary	Secondary	Federal	Total
100 <u>Personnel Services – Salaries</u>				
100 Personnel Services – Salaries				2,547,870.39
Total Personnel Services – Salaries				\$2,547,870.39
200 <u>Personnel Services – Employee Benefits</u>				
220 Social Security Contributions				186,735.78
230 PSERS Retirement Contributions				842,813.21
250 Unemployment Compensation				935.04
260 Workers' Compensation				12,290.12
270 Group Insurance – Self-Insurance				583,674.05
Total Personnel Services – Employee Benefits				\$1,626,448.20
300 <u>Purchased Professional and Technical Services</u>				
329 Professional Educational Services – Other				158,421.47
330 Other Professional Services				13,914.26
340 Technical Services				21,749.99
350 Security / Safety Services				3,865.62
Total Purchased Professional and Technical Services				\$197,951.34
400 <u>Purchased Property Services</u>				
410 Cleaning Services				37,077.04
420 Utility Services				131,976.90
430 Repairs and Maintenance Services				213,415.37
Total Purchased Property Services				\$382,469.31
500 <u>Other Purchased Services</u>				
521 Fire Insurance				120,003.00
523 General Property and Liability Insurance				115,497.00
529 Other Insurance				127,566.00
530 Communications				5,014.35
580 Travel				4,067.05
Total Other Purchased Services				\$372,147.40
600 <u>Supplies</u>				
610 General Supplies	211,325.41	211,325.42		422,650.83
620 Energy				1,156,201.25
630 Food				858.61
Total Supplies	\$211,325.41	\$211,325.42		\$1,579,710.69
700 <u>Property</u>				
752 Capital Equipment – Original and Additional				6,931.13
762 Capitalized Equipment - Replacement				2,961.54
Total Property				\$9,892.67
Total 2600 Operation and Maintenance of Plant Services	\$211,325.41	\$211,325.42		\$6,716,490.00

LEA : 124158503 Unionville-Chadds Ford SD

Printed 10/30/2019 1:37:51 PM

General Fund (10)				
2610 Supervision of Operation and Maintenance of Plant Services	<u>Elementary</u>	<u>Secondary</u>	<u>Federal</u>	<u>Total</u>
100 <u>Personnel Services – Salaries</u>				
100 Personnel Services – Salaries				196,435.48
Total Personnel Services – Salaries				\$196,435.48
200 <u>Personnel Services – Employee Benefits</u>				
220 Social Security Contributions				14,396.94
230 PSERS Retirement Contributions				64,979.14
250 Unemployment Compensation				72.09
260 Workers' Compensation				947.54
270 Group Insurance – Self-Insurance				45,000.04
Total Personnel Services – Employee Benefits				\$125,395.75
300 <u>Purchased Professional and Technical Services</u>				
330 Other Professional Services				13,914.26
Total Purchased Professional and Technical Services				\$13,914.26
500 <u>Other Purchased Services</u>				
530 Communications				5,014.35
580 Travel				4,067.05
Total Other Purchased Services				\$9,081.40
600 <u>Supplies</u>				
630 Food				858.61
Total Supplies				\$858.61
Total 2610 Supervision of Operation and Maintenance of Plant Services				\$345,685.50

LEA : 124158503 Unionville-Chadds Ford SD

Printed 10/30/2019 1:37:51 PM

General Fund (10)				
2611 Supervision of Operation and Maintenance of Plant Services – Head of Component	<u>Elementary</u>	<u>Secondary</u>	<u>Federal</u>	<u>Total</u>
100 <u>Personnel Services – Salaries</u>				
100 Personnel Services – Salaries				196,435.48
Total Personnel Services – Salaries				\$196,435.48
200 <u>Personnel Services – Employee Benefits</u>				
220 Social Security Contributions				14,396.94
230 PSERS Retirement Contributions				64,979.14
250 Unemployment Compensation				72.09
260 Workers' Compensation				947.54
270 Group Insurance – Self-Insurance				45,000.04
Total Personnel Services – Employee Benefits				\$125,395.75
300 <u>Purchased Professional and Technical Services</u>				
330 Other Professional Services				13,914.26
Total Purchased Professional and Technical Services				\$13,914.26
500 <u>Other Purchased Services</u>				
530 Communications				5,014.35
580 Travel				4,067.05
Total Other Purchased Services				\$9,081.40
600 <u>Supplies</u>				
630 Food				858.61
Total Supplies				\$858.61
Total 2611 Supervision of Operation and Maintenance of Plant Services – Head of Component				\$345,685.50

LEA : 124158503 Unionville-Chadds Ford SD

Printed 10/30/2019 1:37:51 PM

General Fund (10)				
2620 Operation of Buildings Services	<u>Elementary</u>	<u>Secondary</u>	<u>Federal</u>	<u>Total</u>
100 <u>Personnel Services – Salaries</u>				
100 Personnel Services – Salaries				2,045,748.37
Total Personnel Services – Salaries				\$2,045,748.37
200 <u>Personnel Services – Employee Benefits</u>				
220 Social Security Contributions				149,934.79
230 PSERS Retirement Contributions				676,715.64
250 Unemployment Compensation				750.77
260 Workers' Compensation				9,868.04
270 Group Insurance – Self-Insurance				468,646.38
Total Personnel Services – Employee Benefits				\$1,305,915.62
300 <u>Purchased Professional and Technical Services</u>				
329 Professional Educational Services – Other				118,201.31
340 Technical Services				21,749.99
Total Purchased Professional and Technical Services				\$139,951.30
400 <u>Purchased Property Services</u>				
410 Cleaning Services				37,077.04
420 Utility Services				131,976.90
430 Repairs and Maintenance Services				213,415.37
Total Purchased Property Services				\$382,469.31
500 <u>Other Purchased Services</u>				
521 Fire Insurance				120,003.00
523 General Property and Liability Insurance				115,497.00
529 Other Insurance				127,566.00
Total Other Purchased Services				\$363,066.00
600 <u>Supplies</u>				
610 General Supplies	157,163.03	157,163.03		314,326.06
620 Energy				1,156,201.25
Total Supplies				\$1,470,527.31
700 <u>Property</u>				
752 Capital Equipment – Original and Additional				6,931.13
762 Capitalized Equipment - Replacement				2,961.54
Total Property				\$9,892.67
Total 2620 Operation of Buildings Services	\$157,163.03	\$157,163.03		\$5,717,570.58

LEA : 124158503 Unionville-Chadds Ford SD

Printed 10/30/2019 1:37:51 PM

General Fund (10)

2630 Care and Upkeep of Grounds Services	<u>Elementary</u>	<u>Secondary</u>	<u>Federal</u>	<u>Total</u>
100 <u>Personnel Services – Salaries</u>				
100 Personnel Services – Salaries				305,686.54
Total Personnel Services – Salaries				\$305,686.54
200 <u>Personnel Services – Employee Benefits</u>				
220 Social Security Contributions				22,404.05
230 PSERS Retirement Contributions				101,118.43
250 Unemployment Compensation				112.18
260 Workers' Compensation				1,474.54
270 Group Insurance – Self-Insurance				70,027.63
Total Personnel Services – Employee Benefits				\$195,136.83
600 <u>Supplies</u>				
610 General Supplies	43,487.81	43,487.82		86,975.63
Total Supplies	\$43,487.81	\$43,487.82		\$86,975.63
Total 2630 Care and Upkeep of Grounds Services	\$43,487.81	\$43,487.82		\$587,799.00

LEA : 124158503 Unionville-Chadds Ford SD

Printed 10/30/2019 1:37:51 PM

General Fund (10)				
2660 Safety and Security Services	<u>Elementary</u>	<u>Secondary</u>	<u>Federal</u>	<u>Total</u>
300 <u>Purchased Professional and Technical Services</u>				
329 Professional Educational Services – Other				40,220.16
350 Security / Safety Services				3,865.62
Total Purchased Professional and Technical Services				\$44,085.78
600 <u>Supplies</u>				
610 General Supplies	10,674.57	10,674.57		21,349.14
Total Supplies	\$10,674.57	\$10,674.57		\$21,349.14
Total 2660 Safety and Security Services	\$10,674.57	\$10,674.57		\$65,434.92

LEA : 124158503 Unionville-Chadds Ford SD

Printed 10/30/2019 1:37:51 PM

General Fund (10)				
2700 Student Transportation Services	<u>Elementary</u>	<u>Secondary</u>	<u>Federal</u>	<u>Total</u>
100 <u>Personnel Services – Salaries</u>				
100 Personnel Services – Salaries				1,906,434.64
Total Personnel Services – Salaries				\$1,906,434.64
200 <u>Personnel Services – Employee Benefits</u>				
220 Social Security Contributions				137,794.11
230 PSERS Retirement Contributions				621,919.89
250 Unemployment Compensation				1,001.81
260 Workers' Compensation				8,695.67
270 Group Insurance – Self-Insurance				689,405.74
Total Personnel Services – Employee Benefits				\$1,458,817.22
300 <u>Purchased Professional and Technical Services</u>				
330 Other Professional Services				20,170.50
340 Technical Services				1,708.19
Total Purchased Professional and Technical Services				\$21,878.69
400 <u>Purchased Property Services</u>				
430 Repairs and Maintenance Services				16,690.01
440 Rentals				5,540.72
Total Purchased Property Services				\$22,230.73
500 <u>Other Purchased Services</u>				
513 Contracted Carriers				1,600.00
516 Student Transportation Services From the IU				1,878.32
522 Automotive Liability Insurance				111,005.00
530 Communications				5,129.76
580 Travel				2,315.55
Total Other Purchased Services				\$121,928.63
600 <u>Supplies</u>				
610 General Supplies				123,719.83
620 Energy				228,910.67
Total Supplies				\$352,630.50
700 <u>Property</u>				
762 Capitalized Equipment - Replacement				308,720.00
Total Property				\$308,720.00
Total 2700 Student Transportation Services				\$4,192,640.41

LEA : 124158503 Unionville-Chadds Ford SD

Printed 10/30/2019 1:37:51 PM

General Fund (10)

2710 Supervision of Student Transportation Services	<u>Elementary</u>	<u>Secondary</u>	<u>Federal</u>	<u>Total</u>
100 <u>Personnel Services – Salaries</u>				
100 Personnel Services – Salaries				133,450.43
Total Personnel Services – Salaries				\$133,450.43
200 <u>Personnel Services – Employee Benefits</u>				
220 Social Security Contributions				9,645.59
230 PSERS Retirement Contributions				43,534.39
250 Unemployment Compensation				70.13
260 Workers' Compensation				608.71
270 Group Insurance – Self-Insurance				48,258.41
Total Personnel Services – Employee Benefits				\$102,117.23
500 <u>Other Purchased Services</u>				
522 Automotive Liability Insurance				111,005.00
530 Communications				5,129.76
580 Travel				2,315.55
Total Other Purchased Services				\$118,450.31
Total 2710 Supervision of Student Transportation Services				\$354,017.97

LEA : 124158503 Unionville-Chadds Ford SD

Printed 10/30/2019 1:37:51 PM

General Fund (10)

2711 Supervision of Student Transportation Services – Head of Component	<u>Elementary</u>	<u>Secondary</u>	<u>Federal</u>	<u>Total</u>
100 <u>Personnel Services – Salaries</u>				
100 Personnel Services – Salaries				133,450.43
Total Personnel Services – Salaries				\$133,450.43
200 <u>Personnel Services – Employee Benefits</u>				
220 Social Security Contributions				9,645.59
230 PSERS Retirement Contributions				43,534.39
250 Unemployment Compensation				70.13
260 Workers' Compensation				608.71
270 Group Insurance – Self-Insurance				48,258.41
Total Personnel Services – Employee Benefits				\$102,117.23
500 <u>Other Purchased Services</u>				
522 Automotive Liability Insurance				111,005.00
530 Communications				5,129.76
580 Travel				2,315.55
Total Other Purchased Services				\$118,450.31
Total 2711 Supervision of Student Transportation Services – Head of Component				\$354,017.97

LEA : 124158503 Unionville-Chadds Ford SD

Printed 10/30/2019 1:37:51 PM

General Fund (10)					
2720 Vehicle Operation Services		<u>Elementary</u>	<u>Secondary</u>	<u>Federal</u>	<u>Total</u>
100 <u>Personnel Services – Salaries</u>					
100 Personnel Services – Salaries					1,086,667.74
Total Personnel Services – Salaries					\$1,086,667.74
200 <u>Personnel Services – Employee Benefits</u>					
220 Social Security Contributions					78,542.64
230 PSERS Retirement Contributions					354,494.34
250 Unemployment Compensation					571.03
260 Workers' Compensation					4,956.53
270 Group Insurance – Self-Insurance					392,961.27
Total Personnel Services – Employee Benefits					\$831,525.81
300 <u>Purchased Professional and Technical Services</u>					
330 Other Professional Services					20,170.50
340 Technical Services					1,708.19
Total Purchased Professional and Technical Services					\$21,878.69
500 <u>Other Purchased Services</u>					
513 Contracted Carriers					1,600.00
516 Student Transportation Services From the IU					1,878.32
Total Other Purchased Services					\$3,478.32
Total 2720 Vehicle Operation Services					\$1,943,550.56

LEA : 124158503 Unionville-Chadds Ford SD

Printed 10/30/2019 1:37:51 PM

General Fund (10)

2730 Monitoring Services

	<u>Elementary</u>	<u>Secondary</u>	<u>Federal</u>	<u>Total</u>
100 <u>Personnel Services – Salaries</u>				
100 Personnel Services – Salaries				38,128.69
Total Personnel Services – Salaries				\$38,128.69
200 <u>Personnel Services – Employee Benefits</u>				
220 Social Security Contributions				2,755.88
230 PSERS Retirement Contributions				12,438.40
250 Unemployment Compensation				20.04
260 Workers' Compensation				173.91
270 Group Insurance – Self-Insurance				13,788.11
Total Personnel Services – Employee Benefits				\$29,176.34
Total 2730 Monitoring Services				\$67,305.03

LEA : 124158503 Unionville-Chadds Ford SD

Printed 10/30/2019 1:37:51 PM

General Fund (10)				
2740 Vehicle Servicing and Maintenance Services	<u>Elementary</u>	<u>Secondary</u>	<u>Federal</u>	<u>Total</u>
100 <u>Personnel Services – Salaries</u>				
100 Personnel Services – Salaries				152,514.77
Total Personnel Services – Salaries				\$152,514.77
200 <u>Personnel Services – Employee Benefits</u>				
220 Social Security Contributions				11,023.53
230 PSERS Retirement Contributions				49,753.59
250 Unemployment Compensation				80.14
260 Workers' Compensation				695.65
270 Group Insurance – Self-Insurance				55,152.46
Total Personnel Services – Employee Benefits				\$116,705.37
400 <u>Purchased Property Services</u>				
430 Repairs and Maintenance Services				16,690.01
440 Rentals				5,540.72
Total Purchased Property Services				\$22,230.73
600 <u>Supplies</u>				
610 General Supplies				123,719.83
620 Energy				228,910.67
Total Supplies				\$352,630.50
700 <u>Property</u>				
762 Capitalized Equipment - Replacement				308,720.00
Total Property				\$308,720.00
Total 2740 Vehicle Servicing and Maintenance Services				\$952,801.37

LEA : 124158503 Unionville-Chadds Ford SD

Printed 10/30/2019 1:37:51 PM

General Fund (10)

2750 Nonpublic Transportation	<u>Elementary</u>	<u>Secondary</u>	<u>Federal</u>	<u>Total</u>
100 <u>Personnel Services – Salaries</u>				
100 Personnel Services – Salaries				495,673.01
Total Personnel Services – Salaries				\$495,673.01
200 <u>Personnel Services – Employee Benefits</u>				
220 Social Security Contributions				35,826.47
230 PSERS Retirement Contributions				161,699.17
250 Unemployment Compensation				260.47
260 Workers' Compensation				2,260.87
270 Group Insurance – Self-Insurance				179,245.49
Total Personnel Services – Employee Benefits				\$379,292.47
Total 2750 Nonpublic Transportation				\$874,965.48

LEA : 124158503 Unionville-Chadds Ford SD

Printed 10/30/2019 1:37:51 PM

General Fund (10)				
2800 Support Services – Central	<u>Elementary</u>	<u>Secondary</u>	<u>Federal</u>	<u>Total</u>
100 <u>Personnel Services – Salaries</u>				
100 Personnel Services – Salaries				641,488.32
Total Personnel Services – Salaries				\$641,488.32
200 <u>Personnel Services – Employee Benefits</u>				
220 Social Security Contributions				46,319.80
230 PSERS Retirement Contributions				209,059.75
240 Tuition Reimbursement				72,430.80
250 Unemployment Compensation				150.27
260 Workers' Compensation				1,779.07
270 Group Insurance – Self-Insurance				67,520.74
Total Personnel Services – Employee Benefits				\$397,260.43
300 <u>Purchased Professional and Technical Services</u>				
330 Other Professional Services				22,870.00
Total Purchased Professional and Technical Services				\$22,870.00
500 <u>Other Purchased Services</u>				
550 Printing and Binding				14,415.64
580 Travel				722.82
Total Other Purchased Services				\$15,138.46
600 <u>Supplies</u>				
610 General Supplies				1,563.30
630 Food				792.50
Total Supplies				\$2,355.80
Total 2800 Support Services – Central				\$1,079,113.01

LEA : 124158503 Unionville-Chadds Ford SD

Printed 10/30/2019 1:37:51 PM

General Fund (10)

2810 Planning, Research, Development and Evaluation Services	<u>Elementary</u>	<u>Secondary</u>	<u>Federal</u>	<u>Total</u>
100 <u>Personnel Services – Salaries</u>				
100 Personnel Services – Salaries				543,270.28
Total Personnel Services – Salaries				\$543,270.28
200 <u>Personnel Services – Employee Benefits</u>				
220 Social Security Contributions				39,328.13
230 PSERS Retirement Contributions				177,503.56
250 Unemployment Compensation				150.27
260 Workers' Compensation				1,779.07
270 Group Insurance – Self-Insurance				67,520.74
Total Personnel Services – Employee Benefits				\$286,281.77
Total 2810 Planning, Research, Development and Evaluation Services				\$829,552.05

LEA : 124158503 Unionville-Chadds Ford SD

Printed 10/30/2019 1:37:51 PM

General Fund (10)				
2820 Information Services	<u>Elementary</u>	<u>Secondary</u>	<u>Federal</u>	<u>Total</u>
100 <u>Personnel Services – Salaries</u>				
100 Personnel Services – Salaries				98,218.04
Total Personnel Services – Salaries				\$98,218.04
200 <u>Personnel Services – Employee Benefits</u>				
220 Social Security Contributions				6,991.67
230 PSERS Retirement Contributions				31,556.19
Total Personnel Services – Employee Benefits				\$38,547.86
300 <u>Purchased Professional and Technical Services</u>				
330 Other Professional Services				22,870.00
Total Purchased Professional and Technical Services				\$22,870.00
500 <u>Other Purchased Services</u>				
550 Printing and Binding				14,415.64
580 Travel				722.82
Total Other Purchased Services				\$15,138.46
600 <u>Supplies</u>				
610 General Supplies				1,563.30
630 Food				792.50
Total Supplies				\$2,355.80
Total 2820 Information Services				\$177,130.16

LEA : 124158503 Unionville-Chadds Ford SD

Printed 10/30/2019 1:37:51 PM

General Fund (10)				
2823 Public Information Services	<u>Elementary</u>	<u>Secondary</u>	<u>Federal</u>	<u>Total</u>
100 <u>Personnel Services – Salaries</u>				
100 Personnel Services – Salaries				98,218.04
Total Personnel Services – Salaries				\$98,218.04
200 <u>Personnel Services – Employee Benefits</u>				
220 Social Security Contributions				6,991.67
230 PSERS Retirement Contributions				31,556.19
Total Personnel Services – Employee Benefits				\$38,547.86
300 <u>Purchased Professional and Technical Services</u>				
330 Other Professional Services				22,870.00
Total Purchased Professional and Technical Services				\$22,870.00
500 <u>Other Purchased Services</u>				
550 Printing and Binding				14,415.64
580 Travel				722.82
Total Other Purchased Services				\$15,138.46
600 <u>Supplies</u>				
610 General Supplies				1,563.30
630 Food				792.50
Total Supplies				\$2,355.80
Total 2823 Public Information Services				\$177,130.16

LEA : 124158503 Unionville-Chadds Ford SD

Printed 10/30/2019 1:37:51 PM

General Fund (10)

2830 Staff Services

Elementary Secondary Federal Total

200 <u>Personnel Services – Employee Benefits</u>				
240 Tuition Reimbursement				72,430.80
Total Personnel Services – Employee Benefits				\$72,430.80
Total 2830 Staff Services				\$72,430.80

LEA : 124158503 Unionville-Chadds Ford SD

Printed 10/30/2019 1:37:51 PM

General Fund (10)

2834 Staff Development Services – Non-Instructional, Certified Staff Only	<u>Elementary</u>	<u>Secondary</u>	<u>Federal</u>	<u>Total</u>
200 <u>Personnel Services – Employee Benefits</u>				
240 Tuition Reimbursement				71,930.80
Total Personnel Services – Employee Benefits				\$71,930.80
Total 2834 Staff Development Services – Non-Instructional, Certified Staff Only				\$71,930.80

LEA : 124158503 Unionville-Chadds Ford SD

Printed 10/30/2019 1:37:51 PM

General Fund (10)

2836 Staff Development Services – Non-Instructional, Non-Certified Staff Only	<u>Elementary</u>	<u>Secondary</u>	<u>Federal</u>	<u>Total</u>
200 <u>Personnel Services – Employee Benefits</u>				
240 Tuition Reimbursement				500.00
Total Personnel Services – Employee Benefits				\$500.00
Total 2836 Staff Development Services – Non-Instructional, Non-Certified Staff Only				\$500.00

LEA : 124158503 Unionville-Chadds Ford SD

Printed 10/30/2019 1:37:51 PM

General Fund (10)

2900 Other Support Services	<u>Elementary</u>	<u>Secondary</u>	<u>Federal</u>	<u>Total</u>
500 <u>Other Purchased Services</u>				
595 IU Payments By Withholding				42,013.14
Total Other Purchased Services				\$42,013.14
Total 2900 Other Support Services				\$42,013.14

LEA : 124158503 Unionville-Chadds Ford SD

Printed 10/30/2019 1:37:51 PM

General Fund (10)

2910 Support Services Not Listed Elsewhere In the 2000 Series

Elementary Secondary Federal Total

500 Other Purchased Services

595 IU Payments By Withholding 42,013.14

Total Other Purchased Services \$42,013.14

Total 2910 Support Services Not Listed Elsewhere In the 2000 Series \$42,013.14

LEA : 124158503 Unionville-Chadds Ford SD

Printed 10/30/2019 1:37:59 PM

General Fund (10)

3000 Operation of Non-Instructional Services	<u>Total</u>
100 <u>Personnel Services – Salaries</u>	
100 Personnel Services – Salaries	1,050,287.87
Total Personnel Services – Salaries	\$1,050,287.87
200 <u>Personnel Services – Employee Benefits</u>	
220 Social Security Contributions	76,034.37
230 PSERS Retirement Contributions	343,173.55
250 Unemployment Compensation	50.07
260 Workers' Compensation	4,302.44
270 Group Insurance – Self-Insurance	29,624.19
Total Personnel Services – Employee Benefits	\$453,184.62
300 <u>Purchased Professional and Technical Services</u>	
329 Professional Educational Services – Other	20,074.60
330 Other Professional Services	59,555.25
Total Purchased Professional and Technical Services	\$79,629.85
400 <u>Purchased Property Services</u>	
430 Repairs and Maintenance Services	18,700.00
Total Purchased Property Services	\$18,700.00
500 <u>Other Purchased Services</u>	
520 Insurance – General	11,250.00
580 Travel	28,279.27
Total Other Purchased Services	\$39,529.27
600 <u>Supplies</u>	
610 General Supplies	80,947.45
Total Supplies	\$80,947.45
800 <u>Other Objects</u>	
810 Dues and Fees	20,522.19
Total Other Objects	\$20,522.19
Total 3000 Operation of Non-Instructional Services	\$1,742,801.25

LEA : 124158503 Unionville-Chadds Ford SD

Printed 10/30/2019 1:37:59 PM

General Fund (10)				
3200 Student Activities				
	<u>Elementary</u>	<u>Secondary</u>	<u>Federal</u>	<u>Total</u>
100 <u>Personnel Services – Salaries</u>				
100 Personnel Services – Salaries				1,035,478.84
Total Personnel Services – Salaries				\$1,035,478.84
200 <u>Personnel Services – Employee Benefits</u>				
220 Social Security Contributions				74,869.10
230 PSERS Retirement Contributions				337,914.19
250 Unemployment Compensation				50.07
260 Workers' Compensation				4,229.83
270 Group Insurance – Self-Insurance				29,624.19
Total Personnel Services – Employee Benefits				\$446,687.38
300 <u>Purchased Professional and Technical Services</u>				
329 Professional Educational Services – Other				20,074.60
330 Other Professional Services				59,555.25
Total Purchased Professional and Technical Services				\$79,629.85
400 <u>Purchased Property Services</u>				
430 Repairs and Maintenance Services				18,700.00
Total Purchased Property Services				\$18,700.00
500 <u>Other Purchased Services</u>				
520 Insurance – General				11,250.00
580 Travel				28,279.27
Total Other Purchased Services				\$39,529.27
600 <u>Supplies</u>				
610 General Supplies				80,947.45
Total Supplies				\$80,947.45
800 <u>Other Objects</u>				
810 Dues and Fees				20,522.19
Total Other Objects				\$20,522.19
Total 3200 Student Activities				\$1,721,494.98

LEA : 124158503 Unionville-Chadds Ford SD

Printed 10/30/2019 1:37:59 PM

General Fund (10)

3300 Community Services	<u>Elementary</u>	<u>Secondary</u>	<u>Federal</u>	<u>Total</u>
100 <u>Personnel Services – Salaries</u>				
100 Personnel Services – Salaries				14,809.03
Total Personnel Services – Salaries				\$14,809.03
200 <u>Personnel Services – Employee Benefits</u>				
220 Social Security Contributions				1,165.27
230 PSERS Retirement Contributions				5,259.36
260 Workers’ Compensation				72.61
Total Personnel Services – Employee Benefits				\$6,497.24
Total 3300 Community Services				\$21,306.27

LEA : 124158503 Unionville-Chadds Ford SD

Printed 10/30/2019 1:38:14 PM

General Fund (10)

5000 Other Expenditures and Financing Uses

Total

800 <u>Other Objects</u>	
830 Interest	3,101,972.57
Total Other Objects	\$3,101,972.57
900 <u>Other Uses of Funds</u>	
910 Redemption of Principal	4,515,000.00
932 Capital Reserve Fund Transfers Applicable To Fund 32	1,866,831.00
Total Other Uses of Funds	\$6,381,831.00
Total 5000 Other Expenditures and Financing Uses	\$9,483,803.57

General Fund (10)

5100 Debt Service / Other Expenditures and Financing Uses	<u>Elementary</u>	<u>Secondary</u>	<u>Federal</u>	<u>Total</u>
800 <u>Other Objects</u>				
830 Interest				3,101,972.57
Total Other Objects				\$3,101,972.57
900 <u>Other Uses of Funds</u>				
910 Redemption of Principal				4,515,000.00
Total Other Uses of Funds				\$4,515,000.00
Total 5100 Debt Service / Other Expenditures and Financing Uses				\$7,616,972.57

LEA : 124158503 Unionville-Chadds Ford SD

Printed 10/30/2019 1:38:14 PM

General Fund (10)

5110 Debt Service	<u>Elementary</u>	<u>Secondary</u>	<u>Federal</u>	<u>Total</u>
800 <u>Other Objects</u>				
830 Interest				3,101,972.57
Total Other Objects				\$3,101,972.57
900 <u>Other Uses of Funds</u>				
910 Redemption of Principal				4,515,000.00
Total Other Uses of Funds				\$4,515,000.00
Total 5110 Debt Service				\$7,616,972.57

LEA : 124158503 Unionville-Chadds Ford SD

Printed 10/30/2019 1:38:14 PM

General Fund (10)

5200 Interfund Transfers – Out

Elementary

Secondary

Federal

Total

900 Other Uses of Funds

932 Capital Reserve Fund Transfers Applicable To Fund 32

1,866,831.00

Total Other Uses of Funds

\$1,866,831.00

Total 5200 Interfund Transfers – Out

\$1,866,831.00

LEA : 124158503 Unionville-Chadds Ford SD

Printed 10/30/2019 1:38:14 PM

General Fund (10)

5230 Capital Projects Fund Transfers	<u>Elementary</u>	<u>Secondary</u>	<u>Federal</u>	<u>Total</u>
900 <u>Other Uses of Funds</u>				
932 Capital Reserve Fund Transfers Applicable To Fund 32				1,866,831.00
Total Other Uses of Funds				\$1,866,831.00
Total 5230 Capital Projects Fund Transfers				\$1,866,831.00

LEA : 124158503 Unionville-Chadds Ford SD

Printed 10/30/2019 1:38:08 PM

Capital Reserve Fund - § 1431 (32)

4000 Facilities Acquisition, Construction and Improvement Services

Total

300 Purchased Professional and Technical Services

330 Other Professional Services	185,233.69
---------------------------------	------------

Total Purchased Professional and Technical Services	\$185,233.69
--	---------------------

700 Property

762 Capitalized Equipment - Replacement	2,568,354.51
---	--------------

Total Property	\$2,568,354.51
-----------------------	-----------------------

Total 4000 Facilities Acquisition, Construction and Improvement Services	\$2,753,588.20
---	-----------------------

LEA : 124158503 Unionville-Chadds Ford SD

Printed 10/30/2019 1:38:08 PM

Capital Reserve Fund - § 1431 (32)

4600 Existing Building Improvement Services

Elementary Secondary Federal Total

300 Purchased Professional and Technical Services

330 Other Professional Services 185,233.69

Total Purchased Professional and Technical Services \$185,233.69

700 Property

762 Capitalized Equipment - Replacement 2,568,354.51

Total Property \$2,568,354.51

Total 4600 Existing Building Improvement Services \$2,753,588.20

LEA : 124158503 Unionville-Chadds Ford SD

Printed 10/30/2019 1:37:54 PM

Other Capital Projects Fund (39)

2000 Support Services

Total

800 Other Objects

810 Dues and Fees

192,905.72

Total Other Objects	\$192,905.72
Total 2000 Support Services	\$192,905.72

LEA : 124158503 Unionville-Chadds Ford SD

Printed 10/30/2019 1:37:54 PM

Other Capital Projects Fund (39)

2300 Support Services – Administration

<u>Elementary</u>	<u>Secondary</u>	<u>Federal</u>	<u>Total</u>
-------------------	------------------	----------------	--------------

800 Other Objects

810 Dues and Fees			192,905.72
-------------------	--	--	------------

Total Other Objects			\$192,905.72
----------------------------	--	--	---------------------

Total 2300 Support Services – Administration			\$192,905.72
---	--	--	---------------------

<u>Elementary</u>	<u>Secondary</u>	<u>Federal</u>	<u>Total</u>
-------------------	------------------	----------------	--------------

<u>Elementary</u>	<u>Secondary</u>	<u>Federal</u>	<u>Total</u>
-------------------	------------------	----------------	--------------

<u>Elementary</u>	<u>Secondary</u>	<u>Federal</u>	<u>Total</u>
-------------------	------------------	----------------	--------------

192,905.72

\$192,905.72

\$192,905.72

LEA : 124158503 Unionville-Chadds Ford SD

Printed 10/30/2019 1:38:09 PM

Other Capital Projects Fund (39)

4000 Facilities Acquisition, Construction and Improvement Services

Total

300 Purchased Professional and Technical Services

330 Other Professional Services	5,100.00
---------------------------------	----------

Total Purchased Professional and Technical Services	\$5,100.00
--	-------------------

700 Property

762 Capitalized Equipment - Replacement	1,224,763.57
---	--------------

Total Property	\$1,224,763.57
-----------------------	-----------------------

Total 4000 Facilities Acquisition, Construction and Improvement Services	\$1,229,863.57
---	-----------------------

LEA : 124158503 Unionville-Chadds Ford SD

Printed 10/30/2019 1:38:09 PM

Other Capital Projects Fund (39)

4600 Existing Building Improvement Services

Elementary Secondary Federal Total

300 Purchased Professional and Technical Services

330 Other Professional Services 5,100.00

Total Purchased Professional and Technical Services \$5,100.00

700 Property

762 Capitalized Equipment - Replacement 1,224,763.57

Total Property \$1,224,763.57

Total 4600 Existing Building Improvement Services \$1,229,863.57

LEA : 124158503 Unionville-Chadds Ford SD

Printed 10/30/2019 1:38:15 PM

Other Capital Projects Fund (39)

5000 Other Expenditures and Financing Uses

Total

900 Other Uses of Funds

910 Redemption of Principal	5,271,597.85
-----------------------------	--------------

Total Other Uses of Funds	\$5,271,597.85
---------------------------	----------------

Total 5000 Other Expenditures and Financing Uses	\$5,271,597.85
--	----------------

LEA : 124158503 Unionville-Chadds Ford SD

Printed 10/30/2019 1:38:15 PM

Other Capital Projects Fund (39)

5100 Debt Service / Other Expenditures and Financing Uses	<u>Elementary</u>	<u>Secondary</u>	<u>Federal</u>	<u>Total</u>
900 <u>Other Uses of Funds</u>				
910 Redemption of Principal				5,271,597.85
Total Other Uses of Funds				\$5,271,597.85
Total 5100 Debt Service / Other Expenditures and Financing Uses				\$5,271,597.85

LEA : 124158503 Unionville-Chadds Ford SD

Printed 10/30/2019 1:38:15 PM

Other Capital Projects Fund (39)

5120 Debt Service – Refunded Bonds

<u>Elementary</u>	<u>Secondary</u>	<u>Federal</u>	<u>Total</u>
-------------------	------------------	----------------	--------------

900 Other Uses of Funds

910 Redemption of Principal			5,271,597.85
-----------------------------	--	--	--------------

Total Other Uses of Funds			\$5,271,597.85
----------------------------------	--	--	-----------------------

Total 5120 Debt Service – Refunded Bonds			\$5,271,597.85
---	--	--	-----------------------

LEA : 124158503 Unionville-Chadds Ford SD

Printed 10/30/2019 1:38:36 PM

	<u>General Fund(10)</u>	<u>Public Purpose Trust(27)</u>	<u>Other Compt Approved (28)</u>	<u>Athletic / Activity(29)</u>	<u>Capital Reserve (690. 1850)(31)</u>
1000 <u>Instruction</u>					
1100 Regular Programs - Elementary / Secondary	34,156,508.01				
1200 Special Programs - Elementary / Secondary	14,680,326.19				
1300 Vocational Education	689,391.23				
1400 Other Instructional Programs - Elementary / Secondary	317,208.91				
Total Instruction	\$49,843,434.34				
2000 <u>Support Services</u>					
2100 Support Services - Students	3,874,007.23				
2200 Support Services - Instructional Staff	4,910,917.67				
2300 Support Services - Administration	3,856,115.56				
2400 Support Services - Pupil Health	716,441.05				
2500 Support Services - Business	1,120,182.15				
2600 Operation and Maintenance of Plant Services	6,716,490.00				
2700 Student Transportation Services	4,192,640.41				
2800 Support Services - Central	1,079,113.01				
2900 Other Support Services	42,013.14				
Total Support Services	\$26,507,920.22				
3000 <u>Operation of Non-Instructional Services</u>					
3200 Student Activities	1,721,494.98				
3300 Community Services	21,306.27				
Total Operation of Non-Instructional Services	\$1,742,801.25				
4000 <u>Facilities Acquisition, Construction and Improvement Services</u>					
4600 Existing Building Improvement Services					
Total Facilities Acquisition, Construction and Improvement					
5000 <u>Other Expenditures and Financing Uses</u>					
5100 Debt Service / Other Expenditures and Financing Uses	7,616,972.57				
5200 Interfund Transfers - Out	1,866,831.00				
Total Other Expenditures and Financing Uses	\$9,483,803.57				
TOTAL ACTUAL EXPENDITURES & OTHER FINANCING USES	\$87,577,959.38				

LEA : 124158503 Unionville-Chadds Ford SD

Printed 10/30/2019 1:38:36 PM

	<u>Capital Reserve (1431)(32)</u>	<u>Other Capital Projects Fund(39)</u>	<u>Debt Service(40)</u>	<u>Permanent(90)</u>	<u>Total</u>
1000 <u>Instruction</u>					
1100 Regular Programs - Elementary / Secondary					34,156,508.01
1200 Special Programs - Elementary / Secondary					14,680,326.19
1300 Vocational Education					689,391.23
1400 Other Instructional Programs - Elementary / Secondary					317,208.91
Total Instruction					\$49,843,434.34
2000 <u>Support Services</u>					
2100 Support Services - Students					3,874,007.23
2200 Support Services - Instructional Staff					4,910,917.67
2300 Support Services - Administration		192,905.72			4,049,021.28
2400 Support Services - Pupil Health					716,441.05
2500 Support Services - Business					1,120,182.15
2600 Operation and Maintenance of Plant Services					6,716,490.00
2700 Student Transportation Services					4,192,640.41
2800 Support Services - Central					1,079,113.01
2900 Other Support Services					42,013.14
Total Support Services		\$192,905.72			\$26,700,825.94
3000 <u>Operation of Non-Instructional Services</u>					
3200 Student Activities					1,721,494.98
3300 Community Services					21,306.27
Total Operation of Non-Instructional Services					\$1,742,801.25
4000 <u>Facilities Acquisition, Construction and Improvement Services</u>					
4600 Existing Building Improvement Services	2,753,588.20	1,229,863.57			3,983,451.77
Total Facilities Acquisition, Construction and Improvement	\$2,753,588.20	\$1,229,863.57			\$3,983,451.77
5000 <u>Other Expenditures and Financing Uses</u>					
5100 Debt Service / Other Expenditures and Financing Uses		5,271,597.85			12,888,570.42
5200 Interfund Transfers - Out					1,866,831.00
Total Other Expenditures and Financing Uses		\$5,271,597.85			\$14,755,401.42
TOTAL ACTUAL EXPENDITURES & OTHER FINANCING USES	\$2,753,588.20	\$6,694,367.14			\$97,025,914.72

LEA : 124158503 Unionville-Chadds Ford SD

Printed 10/30/2019 1:38:45 PM

PSERS Salary Data (Salary Data should relate to the General Fund only)

Amount	Description	Amount
	Total Salary Base for salaries subject to PSERS withholding	39,892,680.82
	Total Federally Funded salaries subject to PSERS withholding	542,375.92

Title I Expenditure Data

Amount	Description	Amount
	Expenditures Funded with Current Title I Funds	107,452.54
	Expenditures Funded with Carry over Title I Funds	
Total	Title I Expenditure Data	\$107,452.54

Benefits for Staff Relative to Collective Bargaining Agreements

	OBJECT	COVERED	NOT COVERED	TOTAL
10 General Fund				
	211 Medical Insurance			
	212 Dental Insurance			
	215 Eye Care Insurance			
	216 Prescription Insurance			
	271 Self-Insurance Medical Benefits	2,750,309.06	2,438,953.32	5,189,262.38
	272 Self-Insurance Dental Benefits	276,532.32	217,275.39	493,807.71
	275 Self-Insurance Eye Care Benefits	58,718.22	46,135.74	104,853.96
	276 Self-Insurance Prescription Benefits	821,520.89	728,518.52	1,550,039.41
	FUND TOTAL	\$3,907,080.49	\$3,430,882.97	\$7,337,963.46
50 Enterprise Fund	No Self Insurance data to report			
	211 Medical Insurance			
	212 Dental Insurance			
	215 Eye Care Insurance			
	216 Prescription Insurance			
	271 Self-Insurance Medical Benefits			
	272 Self-Insurance Dental Benefits			
	275 Self-Insurance Eye Care Benefits			
	276 Self-Insurance Prescription Benefits			
	FUND TOTAL			
60 Internal Service Fund	No Self Insurance data to report			
	211 Medical Insurance			
	212 Dental Insurance			
	215 Eye Care Insurance			
	216 Prescription Insurance			
	271 Self-Insurance Medical Benefits			
	272 Self-Insurance Dental Benefits			
	275 Self-Insurance Eye Care Benefits			
	276 Self-Insurance Prescription Benefits			
	FUND TOTAL			
Total of All Funds		\$3,907,080.49	\$3,430,882.97	\$7,337,963.46

LEA : 124158503 Unionville-Chadds Ford SD

Printed 10/30/2019 1:38:56 PM

Function	Special Education (Prior Year)	Nonspecial Education (Prior Year)	Total (Prior Year)	Special Education (Current Year)	Nonspecial Education (Current Year)	Total (Current Year)
2120 Guidance Services	888,955.13	1,650,916.48	2,539,871.61	899,731.22	1,670,929.22	2,570,660.44
2140 Psychological Services	716,781.38	37,728.13	754,509.51	739,671.20	38,932.95	778,604.15
2150 Speech Pathology and Audiology Services						
2160 Social Work Services						
2260 Instruction and Curriculum Development Services	129,718.03	518,873.15	648,591.18	203,836.56	815,347.81	1,019,184.37
2350 Legal and Accounting Services	42,667.39	56,231.12	98,898.51	59,389.02	48,377.65	107,766.67
2420 Medical Services						
2440 Nursing Services	172,595.24	517,782.98	690,378.22	179,110.97	537,330.08	716,441.05
2700 Student Transportation Services	427,715.55	3,684,933.98	4,112,649.53	436,034.60	3,756,605.81	4,192,640.41
Total	\$2,378,432.72	\$6,466,465.84	\$8,844,898.56	\$2,517,773.57	\$6,867,523.52	\$9,385,297.09

LEA : 124158503 Unionville-Chadds Ford SD

Printed 10/30/2019 1:39:03 PM

(PRINCIPAL AMOUNTS ONLY)								
<u>GOVERNMENTAL FUNDS/ ACTIVITIES</u>	Short-Term Borrowing	General Obligation Bonds/Notes	Authority Building Obligations	Other Long-Term Debt	Other Post- Employment Benefits (OPEB)	Compensated Absences	Net Pension Liability	Total
1. Debt at Beginning of Fiscal Year		76,205,000.00			3,208,571.00	3,783,285.00	142,714,622.00	225,911,478.00
2. Additional Debt Incurred During Year		14,405,000.00			3,293,430.00	98,782.00		17,797,212.00
3. Retirements and Repayments		9,655,000.00			130,676.00		5,892,445.00	15,678,121.00
4. Debt at End of Fiscal Year		80,955,000.00			6,371,325.00	3,882,067.00	136,822,177.00	228,030,569.00
5. Accreted Interest at End Of Fiscal Year								
6. Total Debt and Accreted Interest		80,955,000.00			6,371,325.00	3,882,067.00	136,822,177.00	228,030,569.00
7. Current Portion P&I - Due within 1 year		8,485,385.00				156,300.91		8,641,685.91
8. Interest Paid during current fiscal year		3,101,972.57						3,101,972.57

(PRINCIPAL AMOUNTS ONLY)								
<u>PROPRIETARY FUNDS</u>	Short-Term Borrowing	General Obligation Bonds/Notes	Authority Building Obligations	Other Long-Term Debt	Other Post- Employment Benefits (OPEB)	Compensated Absences	Net Pension Liability	Total
1. Debt at Beginning of Fiscal Year							1,894,378.00	1,894,378.00
2. Additional Debt Incurred During Year								
3. Retirements and Repayments							78,216.00	78,216.00
4. Debt at End of Fiscal Year							1,816,162.00	1,816,162.00
5. Accreted Interest at End Of Fiscal Year								
6. Total Debt and Accreted Interest							1,816,162.00	1,816,162.00
7. Current Portion P&I - Due within 1 year								
8. Interest Paid during current fiscal year								

LEA : 124158503 Unionville-Chadds Ford SD

Printed 10/30/2019 1:39:03 PM

Total Principal and Interest Payments Made by Your School - All Funds

Function	Fund		Principal (910)	Principal (920)	Interest (830)	Total (Principal +Interest)	Misc Other Uses (990)
5110	10	General Fund	4,515,000.00		3,101,972.57	7,616,972.57	
5110	20	Special Revenue Funds					
5110	30	Capital Projects Funds					
5110	40	Debt Service Fund					
5110	90	Permanent Fund					
5120	10	General Fund					
5120	20	Special Revenue Funds					
5120	30	Capital Projects Funds	5,271,597.85			5,271,597.85	
5120	40	Debt Service Fund					
Total Debt Payments - Governmental Funds			\$9,786,597.85		\$3,101,972.57	\$12,888,570.42	

Function	Fund		Principal (910)	Principal (920)	Interest (830)	Total (Principal +Interest)
5110	50	Enterprise Fund				
5110	60	Internal Service Fund				
5120	50	Enterprise Fund				
5120	60	Internal Service Fund				
Total Debt Payments - Proprietary Funds						

LEA : 124158503 Unionville-Chadds Ford SD

Printed 10/30/2019 1:39:03 PM

Debt Details
Governmental Funds/ Activities

Debt Category	Debt Issue Date (MM/YYYY)	Principal Amounts Only				Current Portion Due Within One Year (Principal and Interest)	Interest Paid During Fiscal Year
		Debt at Beginning of Fiscal Year	Additions	Reductions / Repayments	Debt at End of Fiscal Year		
General Obligation Bonds/Notes – CIB	05/2019		9,145,000.00		9,145,000.00	788,125.00	25,260.42
General Obligation Bonds/Notes – CIB	05/2019		5,260,000.00		5,260,000.00	2,622,400.00	12,102.15
General Obligation Bonds/Notes – CIB	09/2016	57,015,000.00		5,000.00	57,010,000.00	2,446,175.00	2,441,275.00
General Obligation Bonds/Notes – CIB	02/2015	11,775,000.00		2,865,000.00	8,910,000.00	2,401,137.50	400,037.50
General Obligation Bonds/Notes – CIB	09/2010	830,000.00		200,000.00	630,000.00	227,547.50	22,547.50
General Obligation Bonds/Notes – CIB	08/2009	6,585,000.00		6,585,000.00			200,750.00
Compensated Absences		3,783,285.00	98,782.00		3,882,067.00	156,300.91	
Other Post-Employment Benefits (OPEB)		3,208,571.00	3,293,430.00	130,676.00	6,371,325.00		
Net Pension Liability		142,714,622.00		5,892,445.00	136,822,177.00		
Totals for Debt Entered:		\$225,911,478.00	\$17,797,212.00	\$15,678,121.00	\$228,030,569.00	\$8,641,685.91	\$3,101,972.57

Bond Details
Proprietary Funds

Debt Category	Debt Issue Date (MM/YYYY)	Principal Amounts Only				Current Portion Due Within One Year (Principal and Interest)	Interest Paid During Fiscal Year
		Debt at Beginning of Fiscal Year	Additions	Reductions / Repayments	Debt at End of Fiscal Year		
Net Pension Liability		1,894,378.00		78,216.00	1,816,162.00		
Totals for Debt Entered:		\$1,894,378.00		\$78,216.00	\$1,816,162.00		

LEA : 124158503 Unionville-Chadds Ford SD

Printed 10/30/2019 1:39:07 PM

General Fund (10)

Section 1: Tuition/Purchased Services as Reported within Expenditure Detail	Amount
Tuition Reported in General Fund Expenditures 1000-560	1,793,238.88
Purchased Services in General Fund Expenditures 1000-594 and 1000-597	
Section 1 Total	\$1,793,238.88

Section 2: Tuition Paid to Institution Types During Fiscal Year	Tuition Paid For Nonspecial Education	Tuition Paid For Special Education	Total
1 1306 Institutions			
2 Institutionalized Children's Programs			
3 Juveniles Incarcerated in Adult Facilities			
4 Residential Treatment Facilities			
5 Other Local Education Agencies	20,800.00	24,630.34	45,430.34
6 Brick and Mortar Charter Schools	202,693.04	32,442.78	235,135.82
7 Cyber Charter Schools	371,768.84	362,305.98	734,074.82
8 Career and Technology Centers	668,591.23		668,591.23
9 Approved Private Schools		75,401.75	75,401.75
10 PA Chartered Schools for the Deaf and Blind			
11 Private Residential Rehabilitative Institutions			
12 Juvenile Detention Centers	34,604.92		34,604.92
13 Special Program Jointures			
14 Other Tuition Not Included Elsewhere In This Section			
Section 2 Total	\$1,298,458.03	\$494,780.85	\$1,793,238.88

1 .	<u>Student Transportation Services for Educational Field Trips</u>	
2 .	<u>Student Transportation Services for Student Activities</u>	56,238.37
3 .	<u>Rental of Vehicles for Student Transportation Services</u>	
4 .	<u>Capital Reserve Funds</u>	

Include only district-owned transportation expenditures paid from State or local money.
DO NOT include federal expenditures or payments to contract service providers.
Contracted transportation services should not be recorded on this schedule.

LEA : 124158503 Unionville-Chadds Ford SD

Printed 10/30/2019 1:39:18 PM

Food Service / Cafeteria Operations Fund (51)

3000 Operation of Non-Instructional Services

Total

100 Personnel Services – Salaries	585,256.06
Total Personnel Services – Salaries	\$585,256.06
200 Personnel Services – Employee Benefits	
220 Social Security Contributions	44,914.93
230 PSERS Retirement Contributions	223,470.35
270 Group Insurance – Self-Insurance	166,340.12
Total Personnel Services – Employee Benefits	\$434,725.40
600 Supplies	
610 General Supplies	778,458.00
Total Supplies	\$778,458.00
700 Property	
740 Depreciation	52,920.60
Total Property	\$52,920.60
Total 3000 Operation of Non-Instructional Services	\$1,851,360.06

LEA : 124158503 Unionville-Chadds Ford SD

Printed 10/30/2019 1:39:18 PM

Food Service / Cafeteria Operations Fund (51)

3100 Food Services	<u>Elementary</u>	<u>Secondary</u>	<u>Federal</u>	<u>Total</u>
100 <u>Personnel Services – Salaries</u>				
100 Personnel Services – Salaries				585,256.06
Total Personnel Services – Salaries				\$585,256.06
200 <u>Personnel Services – Employee Benefits</u>				
220 Social Security Contributions				44,914.93
230 PSERS Retirement Contributions				223,470.35
270 Group Insurance – Self-Insurance				166,340.12
Total Personnel Services – Employee Benefits				\$434,725.40
600 <u>Supplies</u>				
610 General Supplies				778,458.00
Total Supplies				\$778,458.00
700 <u>Property</u>				
740 Depreciation				52,920.60
Total Property				\$52,920.60
Total 3100 Food Services				\$1,851,360.06

LEA : 124158503 Unionville-Chadds Ford SD

Printed 10/30/2019 1:39:14 PM

Internal Service Fund (60)

2000 Support Services

Total

200 Personnel Services – Employee Benefits

270 Group Insurance – Self-Insurance	7,328,930.97
--------------------------------------	--------------

Total Personnel Services – Employee Benefits	\$7,328,930.97
---	-----------------------

300 Purchased Professional and Technical Services

330 Other Professional Services	9,032.50
---------------------------------	----------

Total Purchased Professional and Technical Services	\$9,032.50
--	-------------------

Total 2000 Support Services	\$7,337,963.47
------------------------------------	-----------------------

LEA : 124158503 Unionville-Chadds Ford SD

Printed 10/30/2019 1:39:14 PM

Internal Service Fund (60)

2800 Support Services – Central

<u>Elementary</u>	<u>Secondary</u>	<u>Federal</u>	<u>Total</u>
-------------------	------------------	----------------	--------------

200 <u>Personnel Services – Employee Benefits</u>				
270 Group Insurance – Self-Insurance				7,328,930.97
Total Personnel Services – Employee Benefits				\$7,328,930.97
300 <u>Purchased Professional and Technical Services</u>				
330 Other Professional Services				9,032.50
Total Purchased Professional and Technical Services				\$9,032.50
Total 2800 Support Services – Central				\$7,337,963.47

LEA : 124158503 Unionville-Chadds Ford SD

Printed 10/30/2019 1:39:14 PM

Internal Service Fund (60)

2830 Staff Services

<u>Elementary</u>	<u>Secondary</u>	<u>Federal</u>	<u>Total</u>
-------------------	------------------	----------------	--------------

200 Personnel Services – Employee Benefits

270 Group Insurance – Self-Insurance			7,328,930.97
--------------------------------------	--	--	--------------

Total Personnel Services – Employee Benefits			\$7,328,930.97
---	--	--	-----------------------

300 Purchased Professional and Technical Services

330 Other Professional Services			9,032.50
---------------------------------	--	--	----------

Total Purchased Professional and Technical Services			\$9,032.50
--	--	--	-------------------

Total 2830 Staff Services			\$7,337,963.47
----------------------------------	--	--	-----------------------

LEA : 124158503 Unionville-Chadds Ford SD

Printed 10/30/2019 1:39:14 PM

Internal Service Fund (60)

2835 Health Services

Elementary Secondary Federal Total

200 <u>Personnel Services – Employee Benefits</u>				
270 Group Insurance – Self-Insurance				7,328,930.97
Total Personnel Services – Employee Benefits				\$7,328,930.97
300 <u>Purchased Professional and Technical Services</u>				
330 Other Professional Services				9,032.50
Total Purchased Professional and Technical Services				\$9,032.50
Total 2835 Health Services				\$7,337,963.47

	<u>Food Service(51)</u>	<u>Child Care Operations(52)</u>	<u>Other Enterprise(58)</u>	<u>Internal Service(60)</u>	<u>Total</u>
2000 <u>Support Services</u>					
2800 Support Services - Central				7,337,963.47	7,337,963.47
Total Support Services				\$7,337,963.47	\$7,337,963.47
3000 <u>Operation of Non-Instructional Services</u>					
3100 Food Services	1,851,360.06				1,851,360.06
Total Operation of Non-Instructional Services	\$1,851,360.06				\$1,851,360.06
TOTAL ACTUAL EXPENDITURES & OTHER FINANCING USES	\$1,851,360.06			\$7,337,963.47	\$9,189,323.53

LEA : 124158503 Unionville-Chadds Ford SD

Printed 10/30/2019 1:39:30 PM

Fund	School	School Number	Local Personnel	Local Nonpersonnel	State Personnel	State Nonpersonnel	Federal Personnel	Federal Nonpersonnel	Total	Explanation
10										
	Chadds Ford El Sch	1441	4,604,418.11	599,369.11	1,031,344.58	134,252.82	106,085.00	47,561.91	6,523,031.53	
	Charles F Patton MS	6719	13,007,295.31	1,469,087.45	2,913,506.79	329,061.21	65,543.00	130,531.04	17,915,024.80	
	Hillendale El Sch	7214	4,844,257.46	549,311.12	1,085,066.24	123,040.32		47,033.47	6,648,708.61	
	Pocopson El Sch	7736	7,284,282.36	830,257.21	1,631,607.93	185,969.49	79,067.00	76,627.56	10,087,811.55	
	Unionville El Sch	1442	4,943,179.16	591,247.54	1,107,223.74	132,433.67	107,453.00	47,561.91	6,929,099.02	
	Unionville HS	1443	16,468,554.99	2,209,662.94	3,688,795.06	494,942.87	281,392.00	189,575.92	23,332,923.78	
Total			51,151,987.39	6,248,935.37	11,457,544.34	1,399,700.38	639,540.00	538,891.81	71,436,599.29	

LEA : 124158503 Unionville-Chadds Ford SD

Printed 10/30/2019 1:39:35 PM

	<u>Nonspecial Education</u>	<u>Special Education</u>
1000 Instruction		
1110 Regular Programs	83,404	44,910
1441 Adjudicated / Court-Placed Programs	207,192	0
Total Instruction	\$290,596	\$44,910
TOTAL EXPENDITURES	\$290,596	\$44,910

LEA : 124158503 Unionville-Chadds Ford SD

Printed 10/30/2019 1:39:38 PM

	<u>Nonspecial Education</u>	<u>Special Education</u>
1000 Instruction		
1100 <u>Regular Programs - Elementary / Secondary</u>		
100 Personnel Services - Salaries	\$83,404	\$44,910
Total Regular Programs - Elementary / Secondary	\$83,404	\$44,910
1400 <u>Other Instructional Programs - Elementary / Secondary</u>		
599 Other Miscellaneous Purchased Services	\$207,192	\$0
Total Other Instructional Programs - Elementary / Secondary	\$207,192	\$0
Total Instruction	\$290,596	\$44,910
TOTAL EXPENDITURES	\$290,596	\$44,910

LEA : 124158503 Unionville-Chadds Ford SD

Printed 10/30/2019 1:39:40 PM

	<u>Nonspecial Education</u>	<u>Special Education</u>
6000 Revenue from Local Sources		
Total Revenue from Local Sources	\$207,192	\$0
Total	\$207,192	\$0
TOTAL REVENUES	\$207,192	\$0

LEA : 124158503 Unionville-Chadds Ford SD

Printed 10/30/2019 1:39:43 PM

	<u>Nonspecial Education</u>	<u>Special Education</u>
6000 Revenue from Local Sources		
6944 Receipts from Other LEAs in Pennsylvania - Education	207,192	0
Total Revenue from Local Sources	\$207,192	\$0
TOTAL	\$207,192	\$0
TOTAL REVENUES	\$207,192	\$0