

LEA Name : Unionville-Chadds Ford SD
Address : 740 Unionville Road
Kennett Square , PA 19348

County : Chester
AUN Number : 124158503
LEA Type : SD

Annual Financial Report Accuracy Certification Statement

For Fiscal Year Ending
6/30/2018

Pennsylvania Department of Education
&
Office of Comptroller Operations

PDE-2056: Intermediate Unit

PDE-2057: School District, AVTS/CTC, Charter School,
and Special Program Jointure

CERTIFICATION: By signing this page I agree that the electronic data submitted is a complete and accurate statement of the financial operations and status of the local education agency for the fiscal year. It has been prepared in accordance with generally accepted accounting principles and established Commonwealth of PA reporting guidelines.


Chief School Administrator Signature

10-22-18
Date


Board Secretary Signature

10-22-2018
Date

Joseph Deady
Contact Person

jdeady@ucfsd.net
Contact Person E-mail Address

(610)347-0970 Ext :3320
Contact Person Telephone Number

Contact Person Fax Number

Audit Certification
Annual Financial Report:
For Fiscal Year Ending **6/30/2018**
(Pursuant to PA School Code Section 218(b))

LEA Name : Unionville-Chadds Ford SD
AUN Number : 124158503
County : Chester

Audit Certification Due: 12/31/2018

This certification is applicable to the Annual Financial Report data submitted
through the Consolidated Financial Reporting System on: 10-30-18

Date

Auditing Firm:

Auditor Contact Name:

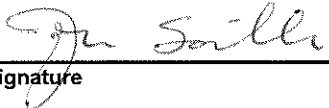
Auditor Phone:

Auditor E-mail:

Page 2

CERTIFICATION: By signing this page I agree that the financial statements of the school have been properly audited as noted above pursuant to Article XXIV, and in the auditor's professional opinion, the Annual Financial Report (PDE-2057) submitted on the date referenced is materially consistent with the audited financial statements.

Chief School Administrator


Signature

10-22-18
Date

Board Secretary


Signature

10-22-2018
Date

Joseph Deady

Contact Person

jdeady@ucfsd.net

Contact Person E-mail Address

(610)347-0970

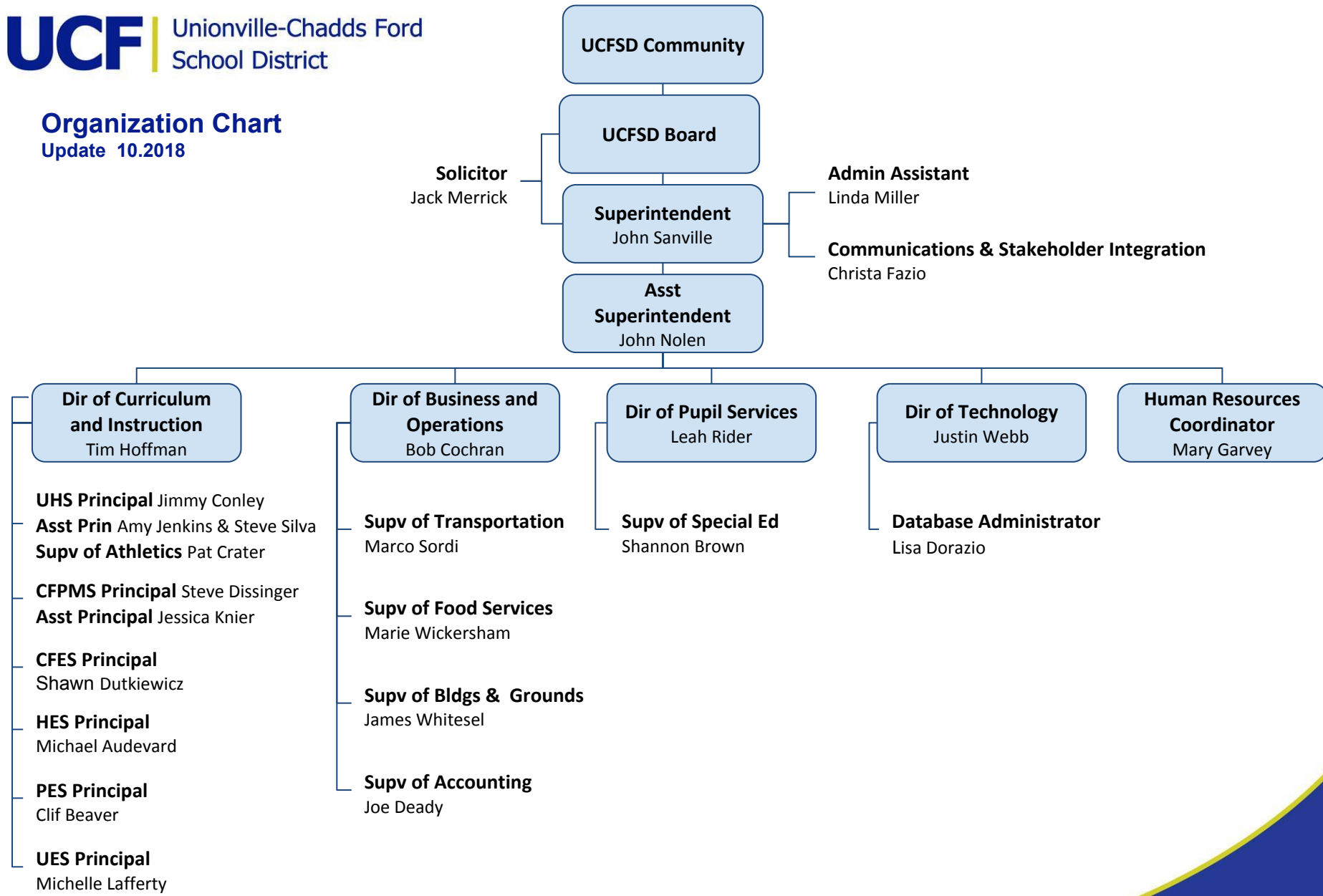
Ext :3320

Contact Person Telephone Number

Contact Person Fax Number

Organization Chart

Update 10.2018



<u>Val Number</u>	<u>Description</u>	<u>Justification</u>
16230	REP Fund 51 – Net Position - Beginning of Fiscal Year must equal Prior Year AFR, Net Position - End of Year. Justifications to this error must fully explain the situation that prompted a fund balance restatement. "Auditor Adjustment" is not a sufficient justification. REP Fund 51 – Net Position - Beginning of Fiscal Year: \$-374,153.00 REP Fund 51, Prior Year AFR, Net Position - End of Year: \$-252,451.00	There was a prior period adjustment for net pension liability
30410	Revenue Detail: AFR amount must equal or exceed PDE FAI System amount. 6944, AFR Rev Detail: \$197,476.62 6944, PDE FAI System: \$249,459.00	There was a reversal for prior revenue- revenue shown is for the current year.
41162	Expenditure Detail, Salaries (Object 100) and Benefits (Object 200 series): Amounts must be entered for both Salaries and Benefits. Please verify following fund and function codes: Fund 10 Function 1190;	no benefits were charged to federal grants...they are recorded in regular instructions functions 1110
50450	SESS - 2350 Legal and Accounting Services: SESS Schedule amounts for Special Education vary from prior year by 40% or more. Correct the data or enter a justification. SESS Schedule 2350: \$42,667.39 Prior Year SESS Schedule 2350: \$107,977.46	Special ed legal services fluctuate from year to year. The 17/18 year was low for special ed legal costs.

LEA : 124158503 Unionville-Chadds Ford SD

Printed 10/30/2018 11:18:53 AM

Amounts Expressed in Whole Dollars		<u>General Fund</u> <u>(10)</u>	<u>Public Purpose Trust</u> <u>(27)</u>	<u>Other Compt Approved</u> <u>(28)</u>	<u>Athletic / Activity</u> <u>(29)</u>	<u>Capital Reserve (690.</u> <u>1850)</u> <u>(31)</u>
Assets And Deferred Outflows Of Resources						
Assets						
0100	Cash and Cash Equivalents	13,453,837				
0110	Investments	4,703,000				
0120	Taxes Receivable	1,093,780				
0130	Due From Other Funds					
0141	Due From Other Governments	3,736,353				
0142	State Revenue Receivable					
0143	Federal Revenue Receivable					
0145	Other Intergovernmental Revenue Receivable					
0146	Due from Primary Government					
0147	Due from Component Unit					
0150	Other Receivables	89,449				
0170	Inventories					
0180	Prepaid Expenses (Expenditures)	4,291				
0190	Other Current Assets					
Total Assets		\$23,080,710				
0910	Deferred Outflows of Resources					
Total Assets And Deferred Outflows Of Resources		\$23,080,710				

LEA : 124158503 Unionville-Chadds Ford SD

Printed 10/30/2018 11:18:53 AM

Amounts Expressed in Whole Dollars		<u>Capital Reserve (1431</u> <u>(32)</u>	<u>Other Capital Projects</u> <u>Fund</u> <u>(39)</u>	<u>Debt Service</u> <u>(40)</u>	<u>Permanent</u> <u>(90)</u>	<u>Total Governmental</u> <u>Funds</u>
Assets And Deferred Outflows Of Resources						
Assets						
0100	Cash and Cash Equivalents	2,277,295				15,731,132
0110	Investments					4,703,000
0120	Taxes Receivable					1,093,780
0130	Due From Other Funds	1,676,237				1,676,237
0141	Due From Other Governments					3,736,353
0142	State Revenue Receivable					
0143	Federal Revenue Receivable					
0145	Other Intergovernmental Revenue Receivable					
0146	Due from Primary Government					
0147	Due from Component Unit					
0150	Other Receivables					89,449
0170	Inventories					
0180	Prepaid Expenses (Expenditures)					4,291
0190	Other Current Assets					
Total Assets		\$3,953,532				\$27,034,242
0910	Deferred Outflows of Resources					
Total Assets And Deferred Outflows Of Resources		\$3,953,532				\$27,034,242

Amounts Expressed in Whole Dollars		<u>General Fund</u> <u>(10)</u>	<u>Public Purpose Trust</u> <u>(27)</u>	<u>Other Compt Approved</u> <u>(28)</u>	<u>Athletic / Activity</u> <u>(29)</u>	<u>Capital Reserve (690.</u> <u>1850)</u> <u>(31)</u>
Liabilities And Deferred Inflows Of Resources And Fund Balances						
Liabilities						
0400	Due to Other Funds	2,196,356				
0411	Due to Other Governments					
0412	Due to Primary Government					
0413	Due to Component Unit					
0420	Accounts Payable	1,211,437				
0430	Contracts Payable					
0440	Current Portion of Long-Term Debt					
0450	Short-Term Payables					
0461	Accrued Salaries and Benefits	10,245,947				
0462	Payroll Deductions and Withholding					
0480	Unearned Revenues					
0490	Other Current Liabilities					
Total Liabilities		\$13,653,740				
0950	Deferred Inflows of Resources	738,994				
Fund Balances						
0810	Nonspendable Fund Balance	4,291				
0820	Restricted Fund Balance					
0830	Committed Fund Balance					
0840	Assigned Fund Balance	3,406,665				
0850	Unassigned Fund Balance	5,277,020				
Total Fund Balances		\$8,687,976				
Total Liabilities, Deferred Inflows Of Resources And Fund Balances		\$23,080,710				

LEA : 124158503 Unionville-Chadds Ford SD

Printed 10/30/2018 11:18:53 AM

Amounts Expressed in Whole Dollars	<u>Capital Reserve (1431)</u> <u>(32)</u>	<u>Other Capital Projects</u> <u>Fund</u> <u>(39)</u>	<u>Debt Service</u> <u>(40)</u>	<u>Permanent</u> <u>(90)</u>	<u>Total Governmental</u> <u>Funds</u>
Liabilities And Deferred Inflows Of Resources And Fund Balances					
Liabilities					
0400 Due to Other Funds					2,196,356
0411 Due to Other Governments					
0412 Due to Primary Government					
0413 Due to Component Unit					
0420 Accounts Payable	408,139				1,619,576
0430 Contracts Payable					
0440 Current Portion of Long-Term Debt					
0450 Short-Term Payables					
0461 Accrued Salaries and Benefits					10,245,947
0462 Payroll Deductions and Withholding					
0480 Unearned Revenues					
0490 Other Current Liabilities					
Total Liabilities	\$408,139				\$14,061,879
0950 Deferred Inflows of Resources					738,994
Fund Balances					
0810 Nonspendable Fund Balance					4,291
0820 Restricted Fund Balance	3,545,393				3,545,393
0830 Committed Fund Balance					
0840 Assigned Fund Balance					3,406,665
0850 Unassigned Fund Balance					5,277,020
Total Fund Balances	\$3,545,393				\$12,233,369
Total Liabilities, Deferred Inflows Of Resources And Fund Balances	\$3,953,532				\$27,034,242

Amounts Expressed in Whole Dollars	General Fund (10)	Public Purpose Trust (27)	Other Compt Approved (28)	Athletic / Activity (29)	Capital Reserve (690. 1850) (31)
Revenues					
6000 Revenue from Local Sources	69,207,350				
7000 Revenue from State Sources	15,516,987				
8000 Revenue from Federal Sources	240,864				
Total Revenues	\$84,965,201				
Expenditures					
1000 Instruction	47,523,902				
2000 Support Services	25,570,803				
3000 Operation of Non-Instructional Services	1,606,030				
4000 Facilities Acquisition, Construction and Improvement Services					
5110 Debt Service	7,726,198				
5130 Refund of Prior Year Revenues / Receipts					
Total Expenditures	\$82,426,933				
Excess (Deficiency) Of Revenues Over Expenditures	\$2,538,268				
Other Financing Sources (Uses)					
9110 Face Value of Bonds Issued					
9120 Proceeds from Refunding of Bonds					
9130 Bond Premiums					
9200 Proceeds from Extended-Term Financing					
9300 Interfund Transfers - IN	66				
9400 Sale of or Compensation for Loss of Fixed Assets	4,382				
9710 Transfers from Component Units					
9720 Transfers from Primary Governments					
9910 Other Financing Sources Not Listed in the 9000 Series					
9990 Insurance Recoveries					
5120 Debt Service – Refunded Bonds					
5150 Bond Discounts					
5200 Interfund Transfers – Out	2,542,716				
5300 Transfers Out to Component Units/Primary Governments					
Total Other Financing Sources (Uses)	(\$2,538,268)				

LEA : 124158503 Unionville-Chadds Ford SD

Printed 10/30/2018 11:18:58 AM

Amounts Expressed in Whole Dollars		<u>Capital Reserve (1431</u> <u>(32)</u>	<u>Other Capital Projects</u> <u>Fund</u> <u>(39)</u>	<u>Debt Service</u> <u>(40)</u>	<u>Permanent</u> <u>(90)</u>	<u>Total Governmental</u> <u>Funds</u>
Revenues						
6000	Revenue from Local Sources	26,846				69,234,196
7000	Revenue from State Sources					15,516,987
8000	Revenue from Federal Sources					240,864
Total Revenues		\$26,846				\$84,992,047
Expenditures						
1000	Instruction					47,523,902
2000	Support Services					25,570,803
3000	Operation of Non-Instructional Services					1,606,030
4000	Facilities Acquisition, Construction and Improvement Services	3,163,154				3,163,154
5110	Debt Service					7,726,198
5130	Refund of Prior Year Revenues / Receipts					
Total Expenditures		\$3,163,154				\$85,590,087
Excess (Deficiency) Of Revenues Over Expenditures		(\$3,136,308)				(\$598,040)
Other Financing Sources (Uses)						
9110	Face Value of Bonds Issued					
9120	Proceeds from Refunding of Bonds					
9130	Bond Premiums					
9200	Proceeds from Extended-Term Financing					
9300	Interfund Transfers - IN	2,542,716				2,542,782
9400	Sale of or Compensation for Loss of Fixed Assets					4,382
9710	Transfers from Component Units					
9720	Transfers from Primary Governments					
9910	Other Financing Sources Not Listed in the 9000 Series					
9990	Insurance Recoveries					
5120	Debt Service – Refunded Bonds					
5150	Bond Discounts					
5200	Interfund Transfers – Out			66		2,542,782
5300	Transfers Out to Component Units/Primary Governments					
Total Other Financing Sources (Uses)		\$2,542,716		(\$66)		\$4,382

Amounts Expressed in Whole Dollars		<u>General Fund</u> <u>(10)</u>	<u>Public Purpose Trust</u> <u>(27)</u>	<u>Other Compt Approved</u> <u>(28)</u>	<u>Athletic / Activity</u> <u>(29)</u>	<u>Capital Reserve</u> <u>(690.</u> <u>1850)</u> <u>(31)</u>
Special And Extraordinary Items						
9920	Special Items – Gains					
9930	Extraordinary Items – Gains					
5520	Special Items – Losses					
5530	Extraordinary Items – Losses					
Net Change In Fund Balances						
Fund Balance						
0001	Fund Balance - Beginning of Fiscal Year	8,687,976				
Fund Balance - End Of Year		\$8,687,976				

Amounts Expressed in Whole Dollars		<u>Capital Reserve (1431</u> <u>(32)</u>	<u>Other Capital Projects</u> <u>Fund</u> <u>(39)</u>	<u>Debt Service</u> <u>(40)</u>	<u>Permanent</u> <u>(90)</u>	<u>Total Governmental</u> <u>Funds</u>
Special And Extraordinary Items						
9920	Special Items – Gains					
9930	Extraordinary Items – Gains					
5520	Special Items – Losses					
5530	Extraordinary Items – Losses					
Net Change In Fund Balances		(\$593,592)		(\$66)		(\$593,658)
Fund Balance						
0001	Fund Balance - Beginning of Fiscal Year	4,138,985		66		12,827,027
Fund Balance - End Of Year		\$3,545,393				\$12,233,369

LEA : 124158503 Unionville-Chadds Ford SD

Printed 10/30/2018 11:19:00 AM

Amounts Expressed in Whole Dollars	Food Service (51)	Child Care Operations (52)	Other Enterprise (58)	TOTAL	Internal Service (60)
Assets And Deferred Outflows Of Resources					
Current Assets					
0100 Cash and Cash Equivalents	1,026,522			1,026,522	250,187
0110 Investments					3,750,000
0130 Due From Other Funds					544,136
0141 Due From Other Governments	28,037			28,037	
0142 State Revenue Receivable					
0143 Federal Revenue Receivable					
0146 Due from Primary Government					
0147 Due from Component Unit					
0150 Other Receivables					
0170 Inventories	18,363			18,363	
0180 Prepaid Expenses (Expenditures)					
0190 Other Current Assets					211,128
Total Current Assets	\$1,072,922			\$1,072,922	\$4,755,451
Noncurrent Assets					
0211 Land					
0212 Site Improvements (Net)					
0220 Buildings and Building Improvements (Net)					
0230 Machinery, Equipment and Furniture (Net)	208,425			208,425	
0250 Construction in Progress					
0260 Long Term Prepayments					
0290 Other Noncurrent Assets					
Total Noncurrent Assets	\$208,425			\$208,425	
0910 Deferred Outflows of Resources	352,697			352,697	
Total Assets And Deferred Outflows Of Resources	\$1,634,044			\$1,634,044	\$4,755,451

LEA : 124158503 Unionville-Chadds Ford SD

Printed 10/30/2018 11:19:00 AM

Amounts Expressed in Whole Dollars	Food Service (51)	Child Care Operations (52)	Other Enterprise (58)	TOTAL	Internal Service (60)
Liabilities And Deferred Inflows Of Resources And Net Position					
Current Liabilities					
0400 Due to Other Funds	24,017			24,017	
0411 Due to Other Governments					
0413 Due to Component Unit					
0420 Accounts Payable					
0430 Contracts Payable					
0440 Current Portion of Long-Term Debt					
0450 Short-Term Payables					
0461 Accrued Salaries and Benefits	13,692			13,692	544,136
0462 Payroll Deductions and Withholding					
0480 Unearned Revenues	72,805			72,805	
0490 Other Current Liabilities					
Total Current Liabilities	\$110,514			\$110,514	\$544,136
Noncurrent Liabilities					
0510 Bonds Payable					
0520 Extended-Term Financing Agreements Payable					
0530 Lease-Purchase Obligations					
0540 Accumulated Compensated Absences					
0550 Authority Lease Obligations					
0560 Other Post-Employment Benefits (OPEB)	125,687			125,687	
0570 Net Pension Liability	1,894,378			1,894,378	
0599 Other Noncurrent Liabilities					
Total Noncurrent Liabilities	\$2,020,065			\$2,020,065	
Total Liabilities	\$2,130,579			\$2,130,579	\$544,136
0950 Deferred Inflows of Resources	17,397			17,397	
Net Position					
0791 Net Investment in Capital Assets	208,425			208,425	
0008 Restricted Net Position (0792 – 0798)					
0799 Unrestricted Net Position	(722,357)			(722,357)	4,211,315
Total Net Position	(\$513,932)			(\$513,932)	\$4,211,315
Total Liabilities And Deferred Inflows Of Resources And Net Position	\$1,634,044			\$1,634,044	\$4,755,451

Amounts Expressed in Whole Dollars	Food Service (51)	Child Care Operations (52)	Other Enterprise (58)	TOTAL	Internal Service (60)
Operating Revenues					
6600 Food Service Revenue	1,442,181			1,442,181	
0071 Charges for Services					7,448,558
0072 Other Operating Revenue					
Total Operating Revenues	\$1,442,181			\$1,442,181	\$7,448,558
Operating Expenses					
100 Personnel Services – Salaries	571,278			571,278	
200 Personnel Services – Employee Benefits	440,826			440,826	7,441,608
300 Purchased Professional and Technical Services					6,950
400 Purchased Property Services					
500 Other Purchased Services					
600 Supplies	844,800			844,800	
740 Depreciation	56,663			56,663	
810 Dues and Fees					
890 Miscellaneous Expenditures					
Total Operating Expenses	\$1,913,567			\$1,913,567	\$7,448,558
Operating Income (Loss)	(\$471,386)			(\$471,386)	\$0
Non Operating Revenues (Expenses)					
6500 Earnings on Investments	20,466			20,466	25,881
6920 Contributions and Donations from Private Sources					
6930 Gains or Losses on Sale of Fixed Assets					
6991 Refunds of a Prior Year Expenditure					
7000 Revenue from State Sources	135,311			135,311	
8000 Revenue from Federal Sources	175,830			175,830	
820 Claims and Judgments Against the LEA					
830 Interest					
TOTAL Non Operating Revenues (Expenses)	\$331,607			\$331,607	\$25,881
Income (Loss) Before Contributions And Transfers	(\$139,779)			(\$139,779)	\$25,881

Amounts Expressed in Whole Dollars	<u>Food Service</u> <u>(51)</u>	<u>Child Care Operations</u> <u>(52)</u>	<u>Other Enterprise</u> <u>(58)</u>	<u>TOTAL</u>	<u>Internal Service</u> <u>(60)</u>
Contributions, Transfers, and Special and Extraordinary Items					
5200 Interfund Transfers – Out					
5300 Transfers Out to Component Units/Primary Governments					
5520 Special Items – Losses					
5530 Extraordinary Items – Losses					
9300 Interfund Transfers - IN					
9500 Capital Contributions					
9700 Transfers IN From Component Units/Primary Governments					
9920 Special Items – Gains					
9930 Extraordinary Items – Gains					
Change In Net Position	(\$139,779)			(\$139,779)	\$25,881
0002 Net Position - Beginning of Fiscal Year	(374,153)			(374,153)	4,185,434
0003 Accounting Changes / Residual Equity Transfers					
Net Position - End Of Year	(\$513,932)			(\$513,932)	\$4,211,315

LEA : 124158503 Unionville-Chadds Ford SD

Printed 10/30/2018 11:19:06 AM

Amounts Expressed in Whole Dollars	<u>Food Service</u> <u>(51)</u>	<u>Child Care Operations</u> <u>(52)</u>	<u>Other Enterprise</u> <u>(58)</u>	<u>TOTAL</u>	<u>Internal Service(60)</u>
Cash Flows From Operating Activities					
0011 Cash Receipts From Users	1,444,389			1,444,389	
0012 Cash Receipts From Assessments Made to Other Funds					7,512,998
0013 Cash Receipts From Earnings on Investments					
0014 Cash Receipts From Other Operating Revenue					
0015 Cash Payments To Employees For Services	1,065,309			1,065,309	
0016 Cash Payments For Insurance Claims					7,506,048
0017 Cash Payments To Suppliers For Goods and Services	797,529			797,529	
0018 Cash Payments For Other Operating Expenses					6,950
Net Cash Provided By (Used For) Operating Activities	(\$418,449)			(\$418,449)	\$0
Cash Flows From Non-Capital Financing Activities					
0021 Receipts From Local Sources - 6000					
0022 Receipts From State Sources - 7000	135,030			135,030	
0023 Receipts From Federal Sources -8000	126,022			126,022	
0024 Notes and Loans Received (Repaid)					
0025 Interest Paid on Notes/Loans - 5100-830					
0026 Operating Transfers In (Out)/Residual Equity Trans					
0027 Operating Transfers In (Out) Primary Government / Comp Unit					
0028 Receipts From Refund of Prior Year Expenditures - 6991					
0029 Special and Extraordinary Gains (losses)					
0030 Receipts from Insurance Recoveries -9990					
Net Cash Prov By (Used for) Non-Capital Financing Activities	\$261,052			\$261,052	
Cash Flows From Capital and Related Financing Activities					
0031 Payments For Fac Acq, Const, and Imp - 4000					
0032 Gain / (Loss) on Sale of Fixed Assets - 6930					
0033 Proceeds From Extended Term Financing - 9200					
0034 Principal Paid on Financing Agreements					
0035 Interest Paid on Financing Agreements - 5100-830					
0036 (Inc) Dec in Contributed Capital					
Net Cash Prov By (Used for) Capital and Related Financing Activities					
Cash Flows From Investing Activities					
0041 Earnings on Investments - 6500	20,466			20,466	25,881
0042 Purchase of Inv Securities / Deposits to Inv Pools					(50,000)
0043 Receipts From Investment Pool Withdrawals					
0044 Proceeds from Sale and Maturity of Inv Securities					

LEA : 124158503 Unionville-Chadds Ford SD

Printed 10/30/2018 11:19:06 AM

Page - 2 of 4

0045 Loans Received (Paid)

Net Cash Prov By (Used for) Investing Activities	\$20,466	\$20,466	(\$24,119)
--	----------	----------	------------

LEA : 124158503 Unionville-Chadds Ford SD

Printed 10/30/2018 11:19:06 AM

	Food Service (51)	Child Care Operations (52)	Other Enterprise (58)	TOTAL	Internal Service (60)
Net Increase (Decrease) in Cash Flows	(136,931)			(136,931)	(24,119)
0004 Cash and Cash Equivalents Beginning of Year	1,163,453			1,163,453	274,306
Cash and Cash Equivalents at Year End	\$1,026,522			\$1,026,522	\$250,187
Reconciliation of Operating Income (Loss) To Net Cash Provided by (Used For) Operating Activities					
0005 Operating Income (Loss) per REP	(471,386)			(471,386)	
Adjustments					
0051 Depreciation and Net Amortization	56,663			56,663	
0052 Provision for Uncollectible Accounts					
0053 Other Adjustments	47,347			47,347	
Effect of Changes in Assets, Liabilities, Deferred Outflows and Deferred Inflows					
0054 (Inc) Dec In Accounts Receivable (0120-0150)					
0055 Advances to Other Funds (0160)					
0056 (Inc) Dec in Inventories (0170)	(76)			(76)	
0057 (Inc) Dec in Prepaid Expenses (0180)					
0058 (Inc) Dec in Other Current or Noncurrent Assets					64,440
0064 Deferred Outflows (0910)	(807)			(807)	
0059 Inc (Dec) in Accounts Payable (0400-0450)					
0060 Inc (Dec) in Accrued Salaries/Benefits (0461)	(9,995)			(9,995)	(64,440)
0065 Inc (Dec) in Net Pension Liabilities (0570)	57,810			57,810	
0066 Inc (Dec) in Other Postemp Benefit Oblig (0560)	(2,697)			(2,697)	
0061 Inc (Dec) in Payroll Deductions/Withholding (0462)					
0062 Inc (Dec) in Unearned Revenue (0480)	2,208			2,208	
0063 Inc (Dec) in Other Current or Noncurrent Liabilities	(99,627)			(99,627)	
0067 Deferred Inflows (0950)	2,111			2,111	
Total Adjustments	\$52,937			\$52,937	
Cash Provided By (Used for) Total	(\$418,449)			(\$418,449)	

COMBINED STATEMENT OF CASH FLOWS
SCHEDULE OF NONCASH INVESTING, CAPITAL, AND FINANCING ACTIVITIES

Explanation of Transaction and Balance Sheet Effect	Amount
Total	

LEA : 124158503 Unionville-Chadds Ford SD

Printed 10/30/2018 11:19:07 AM

Amounts Expressed in Whole Dollars	<u>Private Purpose Trust</u> <u>(71)</u>	<u>Investment Trust</u> <u>(72)</u>	<u>Pension Trust</u> <u>(73)</u>	<u>Activity</u> <u>(81)</u>
Assets And Deferred Outflows Of Resources				
Assets				
0100 Cash and Cash Equivalents	46,219			385,795
0110 Investments				
0130 Due From Other Funds				
0147 Due from Component Unit				
0150 Other Receivables				
0170 Inventories				
0180 Prepaid Expenses (Expenditures)				
0190 Other Current Assets				
0220 Buildings and Building Improvements (Net)				
0230 Machinery, Equipment and Furniture (Net)				
Total Assets	\$46,219			\$385,795
0910 Deferred Outflows of Resources				
Total Assets And Deferred Outflows Of Resources	\$46,219			\$385,795

LEA : 124158503 Unionville-Chadds Ford SD

Printed 10/30/2018 11:19:07 AM

Amounts Expressed in Whole Dollars		<u>Other Agency</u> <u>(89)</u>	<u>Discrete Component Units</u> <u>(98)</u>	<u>Discrete Component Units</u> <u>(99)</u>	<u>Total Fiduciary Funds</u>
Assets And Deferred Outflows Of Resources					
Assets					
0100	Cash and Cash Equivalents				432,014
0110	Investments				
0130	Due From Other Funds				
0147	Due from Component Unit				
0150	Other Receivables				
0170	Inventories				
0180	Prepaid Expenses (Expenditures)				
0190	Other Current Assets				
0220	Buildings and Building Improvements (Net)				
0230	Machinery, Equipment and Furniture (Net)				
Total Assets					\$432,014
0910	Deferred Outflows of Resources				
Total Assets And Deferred Outflows Of Resources					\$432,014

LEA : 124158503 Unionville-Chadds Ford SD

Printed 10/30/2018 11:19:07 AM

Amounts Expressed in Whole Dollars	<u>Private Purpose Trust</u> <u>(71)</u>	<u>Investment Trust</u> <u>(72)</u>	<u>Pension Trust</u> <u>(73)</u>	<u>Activity</u> <u>(81)</u>
Liabilities, Deferred Inflows Of Resources And Net Position				
Liabilities				
0400 Due to Other Funds				
0411 Due to Other Governments				
0412 Due to Primary Government				
0413 Due to Component Unit				
0420 Accounts Payable				
0430 Contracts Payable				
0450 Short-Term Payables				
0461 Accrued Salaries and Benefits				
0462 Payroll Deductions and Withholding				
0480 Unearned Revenues				
0490 Other Current Liabilities				385,795
Total Liabilities				\$385,795
0950 Deferred Inflows of Resources				
Net Position				
0791 Net Investment in Capital Assets				
0009 Restricted Net Position (0792 – 0798)	46,219			
0799 Unrestricted Net Position				
Total Net Position	\$46,219			
Total Liabilities, Deferred Inflows Of Resources And Net Position	\$46,219			\$385,795

LEA : 124158503 Unionville-Chadds Ford SD

Printed 10/30/2018 11:19:07 AM

Amounts Expressed in Whole Dollars

<u>Other Agency</u> <u>(89)</u>	<u>Discrete Component Units</u> <u>(98)</u>	<u>Discrete Component Units</u> <u>(99)</u>	<u>Total Fiduciary Funds</u>
------------------------------------	--	--	------------------------------

Liabilities, Deferred Inflows Of Resources And Net Position

Liabilities

0400	Due to Other Funds			
0411	Due to Other Governments			
0412	Due to Primary Government			
0413	Due to Component Unit			
0420	Accounts Payable			
0430	Contracts Payable			
0450	Short-Term Payables			
0461	Accrued Salaries and Benefits			
0462	Payroll Deductions and Withholding			
0480	Unearned Revenues			
0490	Other Current Liabilities			385,795
Total Liabilities				\$385,795

0950 Deferred Inflows of Resources

Net Position

0791	Net Investment in Capital Assets			
0009	Restricted Net Position (0792 – 0798)			46,219
0799	Unrestricted Net Position			
Total Net Position				\$46,219
Total Liabilities, Deferred Inflows Of Resources And Net Position				\$432,014

LEA : 124158503 Unionville-Chadds Ford SD

Printed 10/30/2018 11:19:08 AM

Amounts Expressed in Whole Dollars	<u>Private Purpose Trust</u> <u>(71)</u>	<u>Investment Trust</u> <u>(72)</u>	<u>Pension Trust</u> <u>(73)</u>	<u>Discrete Component</u> <u>Units</u> <u>(98)</u>	<u>Discrete Component</u> <u>Units</u> <u>(99)</u>	<u>Total Fiduciary</u> <u>Funds</u>
Additions						
0091 Gifts and Contributions	36,238					36,238
0092 Other Additions						
Deductions						
0093 Scholarships Awarded	50,700					50,700
0094 Other Deductions						
Change In Net Position	(\$14,462)					(\$14,462)
0006 Net Position – Beginning of Fiscal Year	60,681					60,681
0007 Net Position Held in Trust for Pension Benefits						
Net Position - End of Fiscal Year	\$46,219					\$46,219

	Revenue Reported In Current Year	Current Year Tax Accrual	Prior Year Tax Accrual	Taxes Collected In Current Year
Revenue from Local Sources				
6111 Current Real Estate Taxes	64,861,438.32			64,861,438.32
6112 Interim Real Estate Taxes	508,858.97	43,516.81	29,996.73	495,338.89
6113 Public Utility Realty Taxes	65,513.42			65,513.42
6153 Current Act 511 Real Estate Transfer Taxes	1,223,301.90	157,137.11	149,492.37	1,215,657.16
6411 Delinquent Real Estate Taxes	859,740.65	154,131.94	172,419.57	878,028.28
6500 Earnings on Investments	557,659.25			
6700 Revenues from LEA Activities	248,208.58			
6832 Federal IDEA Revenue Received as Pass Through	510,043.68			
6910 Rentals	48,423.67			
6920 Contributions and Donations from Private Sources	217.50			
6944 Receipts from Other LEAs in Pennsylvania - Education	197,476.62			
6949 Other Tuition from Patrons	22,245.00			
6991 Refunds of a Prior Year Expenditure	6,027.66			
6992 Energy Efficiency Revenues and Incentives	34,382.52			
6999 Other Revenues Not Specified Above	63,811.90			
TOTAL Revenue from Local Sources	\$69,207,349.64	\$354,785.86	\$351,908.67	\$67,515,976.07

	Revenue Reported In Current Year			
Revenue from State Sources				
7110 Basic Education Funding	3,269,336.83			
7160 Tuition for Orphans Subsidy	28,078.08			
7250 Migratory Children	80.00			
7271 Special Education funds for School-Aged Pupils	1,803,913.64			
7311 Pupil Transportation Subsidy	599,895.87			
7312 Nonpublic and Charter School Pupil Transportation Subsidy	137,445.00			
7320 Rental and Sinking Fund Payments / Building Reimbursement Subsidy	329,214.53			
7330 Health Services (Medical, Dental, Nurse, Act 25)	80,502.40			
7340 State Property Tax Reduction Allocation	1,488,599.61			
7505 Ready to Learn Block Grant	127,325.00			
7810 State Share of Social Security and Medicare Taxes	1,399,887.58			
7820 State Share of Retirement Contributions	6,252,708.80			
TOTAL Revenue from State Sources	\$15,516,987.34			

	Revenue Reported In Current Year			
<u>Revenue from Federal Sources</u>				
8514 NCLB, Title I - Improving the Academic Achievement of the Disadvantaged	102,537.00			
8515 NCLB, Title II - Preparing, Training and Recruiting High Quality Teachers and Principals	60,343.24			
8516 NCLB, Title III - Language Instruction for Limited English Proficient and Immigrant Students	11,468.69			
8517 NCLB, Title IV - 21St Century Schools	9,574.00			
8810 School-Based Access Medicaid Reimbursement Program (SBAP) Reimbursements (Access)	53,141.94			
8820 Medical Assistance Reimbursement for Administrative Claiming (Quarterly) Program	3,799.03			
TOTAL Revenue from Federal Sources	\$240,863.90			

	Revenue Reported In Current Year			
<u>Other Financing Sources</u>				
9340 Debt Service Fund Transfers	65.54			
9400 Sale of or Compensation for Loss of Fixed Assets	4,382.00			
TOTAL Other Financing Sources	\$4,447.54			
TOTAL FROM ALL SOURCES	\$84,969,648.42	\$354,785.86	\$351,908.67	\$67,515,976.07

Revenue from Local Sources	69,207,349.64
Revenue from State Sources	15,516,987.34
Revenue from Federal Sources	240,863.90
Other Financing Sources	4,447.54
TOTAL FROM ALL SOURCES	\$84,969,648.42

LEA : 124158503 Unionville-Chadds Ford SD

Printed 10/30/2018 11:19:12 AM

General Fund (10)	
1000 Instruction	<u>Total</u>
100 <u>Personnel Services – Salaries</u>	
100 Personnel Services – Salaries	25,800,158.86
Total Personnel Services – Salaries	\$25,800,158.86
200 <u>Personnel Services – Employee Benefits</u>	
220 Social Security Contributions	1,880,269.94
230 PSERS Retirement Contributions	8,258,019.31
250 Unemployment Compensation	13,724.67
260 Workers' Compensation	116,707.88
270 Group Insurance – Self-Insurance	4,632,546.47
Total Personnel Services – Employee Benefits	\$14,901,268.27
300 <u>Purchased Professional and Technical Services</u>	
322 Professional Educational Services – Ius	2,005,664.24
329 Professional Educational Services – Other	1,620,837.03
330 Other Professional Services	519,239.68
390 Other Purchased Professional and Technical Services	63.70
Total Purchased Professional and Technical Services	\$4,145,804.65
400 <u>Purchased Property Services</u>	
430 Repairs and Maintenance Services	176,854.58
Total Purchased Property Services	\$176,854.58
500 <u>Other Purchased Services</u>	
561 Tuition To Other School Districts Within the State	116,327.39
562 Tuition To Pennsylvania Charter Schools	639,990.22
564 Tuition To Career and Technology Centers	692,437.00
567 Tuition To Approved Private Schools (APS) and PA Chartered Schools for the Deaf and Blind	79,073.83
580 Travel	84,265.97
596 Direct Payments To Intermediate Units	26,443.00
599 Other Miscellaneous Purchased Services	192,681.81
Total Other Purchased Services	\$1,831,219.22
600 <u>Supplies</u>	
610 General Supplies	316,505.73
630 Food	759.00
640 Books and Periodicals	281,105.23
Total Supplies	\$598,369.96
700 <u>Property</u>	
752 Capital Equipment – Original and Additional	69,968.41
762 Capitalized Equipment - Replacement	28.40
Total Property	\$69,996.81
800 <u>Other Objects</u>	
810 Dues and Fees	230.00
Total Other Objects	\$230.00
Total 1000 Instruction	\$47,523,902.35

LEA : 124158503 Unionville-Chadds Ford SD

Printed 10/30/2018 11:19:12 AM

General Fund (10)				
1100 Regular Programs – Elementary / Secondary	<u>Elementary</u>	<u>Secondary</u>	<u>Federal</u>	<u>Total</u>
100 <u>Personnel Services – Salaries</u>				
100 Personnel Services – Salaries	9,940,899.59	9,797,837.75	102,537.00	19,841,274.34
Total Personnel Services – Salaries	\$9,940,899.59	\$9,797,837.75	\$102,537.00	\$19,841,274.34
200 <u>Personnel Services – Employee Benefits</u>				
220 Social Security Contributions	728,801.92	717,233.64		1,446,035.56
230 PSERS Retirement Contributions	3,201,037.70	3,150,227.58		6,351,265.28
250 Unemployment Compensation	4,559.48	4,487.10		9,046.58
260 Workers' Compensation	47,301.37	46,550.55		93,851.92
270 Group Insurance – Self-Insurance	1,659,087.14	1,632,752.43		3,291,839.57
Total Personnel Services – Employee Benefits	\$5,640,787.61	\$5,551,251.30		\$11,192,038.91
300 <u>Purchased Professional and Technical Services</u>				
322 Professional Educational Services – lus	7,529.90			7,529.90
329 Professional Educational Services – Other	520,761.42	446,280.03		967,041.45
330 Other Professional Services	6,818.78	5,040.00	11,469.00	23,327.78
Total Purchased Professional and Technical Services	\$535,110.10	\$451,320.03	\$11,469.00	\$997,899.13
400 <u>Purchased Property Services</u>				
430 Repairs and Maintenance Services	82,290.23	92,097.53		174,387.76
Total Purchased Property Services	\$82,290.23	\$92,097.53		\$174,387.76
500 <u>Other Purchased Services</u>				
562 Tuition To Pennsylvania Charter Schools	111,241.82	348,290.22		459,532.04
580 Travel	15,881.36	58,095.90		73,977.26
Total Other Purchased Services	\$127,123.18	\$406,386.12		\$533,509.30
600 <u>Supplies</u>				
610 General Supplies	87,836.37	149,713.92	2,352.00	239,902.29
640 Books and Periodicals	75,150.49	205,954.74		281,105.23
Total Supplies	\$162,986.86	\$355,668.66	\$2,352.00	\$521,007.52
700 <u>Property</u>				
752 Capital Equipment – Original and Additional	46,968.75	22,999.66		69,968.41
762 Capitalized Equipment - Replacement	28.40			28.40
Total Property	\$46,997.15	\$22,999.66		\$69,996.81
Total 1100 Regular Programs – Elementary / Secondary	\$16,536,194.72	\$16,677,561.05	\$116,358.00	\$33,330,113.77

LEA : 124158503 Unionville-Chadds Ford SD

Printed 10/30/2018 11:19:12 AM

General Fund (10)				
1110 Regular Programs	<u>Elementary</u>	<u>Secondary</u>	<u>Federal</u>	<u>Total</u>
100 <u>Personnel Services – Salaries</u>				
100 Personnel Services – Salaries	9,940,899.59	9,797,837.75		19,738,737.34
Total Personnel Services – Salaries	\$9,940,899.59	\$9,797,837.75		\$19,738,737.34
200 <u>Personnel Services – Employee Benefits</u>				
220 Social Security Contributions	728,801.92	717,233.64		1,446,035.56
230 PSERS Retirement Contributions	3,201,037.70	3,150,227.58		6,351,265.28
250 Unemployment Compensation	4,559.48	4,487.10		9,046.58
260 Workers' Compensation	47,301.37	46,550.55		93,851.92
270 Group Insurance – Self-Insurance	1,659,087.14	1,632,752.43		3,291,839.57
Total Personnel Services – Employee Benefits	\$5,640,787.61	\$5,551,251.30		\$11,192,038.91
300 <u>Purchased Professional and Technical Services</u>				
322 Professional Educational Services – lus	7,529.90			7,529.90
329 Professional Educational Services – Other	520,761.42	446,280.03		967,041.45
330 Other Professional Services	6,818.78	5,040.00		11,858.78
Total Purchased Professional and Technical Services	\$535,110.10	\$451,320.03		\$986,430.13
400 <u>Purchased Property Services</u>				
430 Repairs and Maintenance Services	82,290.23	92,097.53		174,387.76
Total Purchased Property Services	\$82,290.23	\$92,097.53		\$174,387.76
500 <u>Other Purchased Services</u>				
562 Tuition To Pennsylvania Charter Schools	111,241.82	348,290.22		459,532.04
580 Travel	15,881.36	58,095.90		73,977.26
Total Other Purchased Services	\$127,123.18	\$406,386.12		\$533,509.30
600 <u>Supplies</u>				
610 General Supplies	87,836.37	149,713.92		237,550.29
640 Books and Periodicals	75,150.49	205,954.74		281,105.23
Total Supplies	\$162,986.86	\$355,668.66		\$518,655.52
700 <u>Property</u>				
752 Capital Equipment – Original and Additional	46,968.75	22,999.66		69,968.41
762 Capitalized Equipment - Replacement	28.40			28.40
Total Property	\$46,997.15	\$22,999.66		\$69,996.81
Total 1110 Regular Programs	\$16,536,194.72	\$16,677,561.05		\$33,213,755.77

LEA : 124158503 Unionville-Chadds Ford SD

Printed 10/30/2018 11:19:12 AM

General Fund (10)

1190 Federally-Funded Regular Programs	<u>Elementary</u>	<u>Secondary</u>	<u>Federal</u>	<u>Total</u>
100 <u>Personnel Services – Salaries</u>				
100 Personnel Services – Salaries			102,537.00	102,537.00
Total Personnel Services – Salaries			\$102,537.00	\$102,537.00
300 <u>Purchased Professional and Technical Services</u>				
330 Other Professional Services			11,469.00	11,469.00
Total Purchased Professional and Technical Services			\$11,469.00	\$11,469.00
600 <u>Supplies</u>				
610 General Supplies			2,352.00	2,352.00
Total Supplies			\$2,352.00	\$2,352.00
Total 1190 Federally-Funded Regular Programs			\$116,358.00	\$116,358.00

LEA : 124158503 Unionville-Chadds Ford SD

Printed 10/30/2018 11:19:12 AM

General Fund (10)				
1200 Special Programs – Elementary / Secondary	<u>Elementary</u>	<u>Secondary</u>	<u>Federal</u>	<u>Total</u>
100 <u>Personnel Services – Salaries</u>				
100 Personnel Services – Salaries	3,305,982.73	2,276,244.24	366,125.31	5,948,352.28
Total Personnel Services – Salaries	\$3,305,982.73	\$2,276,244.24	\$366,125.31	\$5,948,352.28
200 <u>Personnel Services – Employee Benefits</u>				
220 Social Security Contributions	239,394.18	182,802.17	11,468.91	433,665.26
230 PSERS Retirement Contributions	1,048,434.01	796,197.50	59,623.50	1,904,255.01
250 Unemployment Compensation	2,629.85	2,048.24		4,678.09
260 Workers' Compensation	13,200.74	9,514.45		22,715.19
270 Group Insurance – Self-Insurance	716,830.96	556,390.66	67,485.28	1,340,706.90
Total Personnel Services – Employee Benefits	\$2,020,489.74	\$1,546,953.02	\$138,577.69	\$3,706,020.45
300 <u>Purchased Professional and Technical Services</u>				
322 Professional Educational Services – lus	532,080.72	1,367,098.80		1,899,179.52
329 Professional Educational Services – Other	332,162.59	282,685.41		614,848.00
330 Other Professional Services	91,092.50	404,819.40		495,911.90
390 Other Purchased Professional and Technical Services		63.70		63.70
Total Purchased Professional and Technical Services	\$955,335.81	\$2,054,667.31		\$3,010,003.12
400 <u>Purchased Property Services</u>				
430 Repairs and Maintenance Services	1,233.41	1,233.41		2,466.82
Total Purchased Property Services	\$1,233.41	\$1,233.41		\$2,466.82
500 <u>Other Purchased Services</u>				
561 Tuition To Other School Districts Within the State		23,456.65		23,456.65
562 Tuition To Pennsylvania Charter Schools	46,260.94	134,197.24		180,458.18
567 Tuition To Approved Private Schools (APS) and PA Chartered Schools for the Deaf and Blind		79,073.83		79,073.83
580 Travel	4,102.08	5,101.26		9,203.34
Total Other Purchased Services	\$50,363.02	\$241,828.98		\$292,192.00
600 <u>Supplies</u>				
610 General Supplies	27,419.97	49,183.47		76,603.44
630 Food	642.00	117.00		759.00
Total Supplies	\$28,061.97	\$49,300.47		\$77,362.44
800 <u>Other Objects</u>				
810 Dues and Fees	230.00			230.00
Total Other Objects	\$230.00			\$230.00
Total 1200 Special Programs – Elementary / Secondary	\$6,361,696.68	\$6,170,227.43	\$504,703.00	\$13,036,627.11

LEA : 124158503 Unionville-Chadds Ford SD

Printed 10/30/2018 11:19:12 AM

General Fund (10)				
1210 Life Skills Support	<u>Elementary</u>	<u>Secondary</u>	<u>Federal</u>	<u>Total</u>
100 <u>Personnel Services – Salaries</u>				
100 Personnel Services – Salaries	73,933.08	126.89	45,596.75	119,656.72
Total Personnel Services – Salaries	\$73,933.08	\$126.89	\$45,596.75	\$119,656.72
200 <u>Personnel Services – Employee Benefits</u>				
220 Social Security Contributions	5,380.98	2,112.61	1,327.69	8,821.28
230 PSERS Retirement Contributions	23,628.26	7,681.16	7,425.43	38,734.85
250 Unemployment Compensation	41.97	26.83		68.80
270 Group Insurance – Self-Insurance	21,560.11	317.13	13,467.20	35,344.44
Total Personnel Services – Employee Benefits	\$50,611.32	\$10,137.73	\$22,220.32	\$82,969.37
300 <u>Purchased Professional and Technical Services</u>				
322 Professional Educational Services – Ius		283,545.35		283,545.35
329 Professional Educational Services – Other	8,841.63	90,650.17		99,491.80
Total Purchased Professional and Technical Services	\$8,841.63	\$374,195.52		\$383,037.15
500 <u>Other Purchased Services</u>				
580 Travel		338.01		338.01
Total Other Purchased Services		\$338.01		\$338.01
600 <u>Supplies</u>				
610 General Supplies	2,632.85	6,967.47		9,600.32
Total Supplies	\$2,632.85	\$6,967.47		\$9,600.32
Total 1210 Life Skills Support	\$136,018.88	\$391,765.62	\$67,817.07	\$595,601.57

LEA : 124158503 Unionville-Chadds Ford SD

Printed 10/30/2018 11:19:12 AM

General Fund (10)				
1220 Sensory Support	<u>Elementary</u>	<u>Secondary</u>	<u>Federal</u>	<u>Total</u>
100 <u>Personnel Services – Salaries</u>				
100 Personnel Services – Salaries	289,491.10	77,949.08		367,440.18
Total Personnel Services – Salaries	\$289,491.10	\$77,949.08		\$367,440.18
200 <u>Personnel Services – Employee Benefits</u>				
220 Social Security Contributions	21,077.72	5,670.66		26,748.38
230 PSERS Retirement Contributions	92,553.79	24,900.26		117,454.05
250 Unemployment Compensation	135.53	36.46		171.99
260 Workers' Compensation	1,622.19	436.43		2,058.62
270 Group Insurance – Self-Insurance	54,788.89	14,740.16		69,529.05
Total Personnel Services – Employee Benefits	\$170,178.12	\$45,783.97		\$215,962.09
300 <u>Purchased Professional and Technical Services</u>				
322 Professional Educational Services – lus	64,977.54	65,832.34		130,809.88
329 Professional Educational Services – Other	7,918.54	2,677.41		10,595.95
Total Purchased Professional and Technical Services	\$72,896.08	\$68,509.75		\$141,405.83
500 <u>Other Purchased Services</u>				
580 Travel	1,060.00			1,060.00
Total Other Purchased Services	\$1,060.00			\$1,060.00
600 <u>Supplies</u>				
610 General Supplies	9,165.50	5,916.79		15,082.29
Total Supplies	\$9,165.50	\$5,916.79		\$15,082.29
Total 1220 Sensory Support	\$542,790.80	\$198,159.59		\$740,950.39

LEA : 124158503 Unionville-Chadds Ford SD

Printed 10/30/2018 11:19:12 AM

General Fund (10)

1230 Emotional Support

	Elementary	Secondary	Federal	Total
100 <u>Personnel Services – Salaries</u>				
100 Personnel Services – Salaries	359,577.43	393,093.66	193,389.63	946,060.72
Total Personnel Services – Salaries	\$359,577.43	\$393,093.66	\$193,389.63	\$946,060.72
200 <u>Personnel Services – Employee Benefits</u>				
220 Social Security Contributions	26,647.80	35,956.65	6,542.96	69,147.41
230 PSERS Retirement Contributions	114,249.49	157,888.23	31,493.49	303,631.21
250 Unemployment Compensation	378.37	378.37		756.74
260 Workers' Compensation	802.33	869.20		1,671.53
270 Group Insurance – Self-Insurance	58,795.88	107,625.66	40,550.88	206,972.42
Total Personnel Services – Employee Benefits	\$200,873.87	\$302,718.11	\$78,587.33	\$582,179.31
300 <u>Purchased Professional and Technical Services</u>				
322 Professional Educational Services – lus	194,137.88	460,491.07		654,628.95
329 Professional Educational Services – Other	67,518.92	35,106.75		102,625.67
Total Purchased Professional and Technical Services	\$261,656.80	\$495,597.82		\$757,254.62
500 <u>Other Purchased Services</u>				
561 Tuition To Other School Districts Within the State		23,456.65		23,456.65
567 Tuition To Approved Private Schools (APS) and PA Chartered Schools for the Deaf and Blind		16,746.00		16,746.00
580 Travel	219.99	581.22		801.21
Total Other Purchased Services	\$219.99	\$40,783.87		\$41,003.86
600 <u>Supplies</u>				
610 General Supplies	865.64	6,102.04		6,967.68
Total Supplies	\$865.64	\$6,102.04		\$6,967.68
Total 1230 Emotional Support	\$823,193.73	\$1,238,295.50	\$271,976.96	\$2,333,466.19

LEA : 124158503 Unionville-Chadds Ford SD

Printed 10/30/2018 11:19:12 AM

General Fund (10)				
1240 Academic Support	<u>Elementary</u>	<u>Secondary</u>	<u>Federal</u>	<u>Total</u>
100 <u>Personnel Services – Salaries</u>				
100 Personnel Services – Salaries	2,530,869.55	1,750,148.72	127,138.93	4,408,157.20
Total Personnel Services – Salaries	\$2,530,869.55	\$1,750,148.72	\$127,138.93	\$4,408,157.20
200 <u>Personnel Services – Employee Benefits</u>				
220 Social Security Contributions	182,553.72	135,113.16	3,598.26	321,265.14
230 PSERS Retirement Contributions	801,606.39	588,387.13	20,704.58	1,410,698.10
250 Unemployment Compensation	2,057.26	1,588.90		3,646.16
260 Workers' Compensation	10,716.36	8,145.51		18,861.87
270 Group Insurance – Self-Insurance	581,597.24	433,613.76	13,467.20	1,028,678.20
Total Personnel Services – Employee Benefits	\$1,578,530.97	\$1,166,848.46	\$37,770.04	\$2,783,149.47
300 <u>Purchased Professional and Technical Services</u>				
322 Professional Educational Services – lus	169,695.59	479,393.75		649,089.34
329 Professional Educational Services – Other	151,079.39	146,220.34		297,299.73
390 Other Purchased Professional and Technical Services		63.70		63.70
Total Purchased Professional and Technical Services	\$320,774.98	\$625,677.79		\$946,452.77
500 <u>Other Purchased Services</u>				
580 Travel	219.99			219.99
Total Other Purchased Services	\$219.99			\$219.99
600 <u>Supplies</u>				
610 General Supplies	10,490.88	6,767.85		17,258.73
Total Supplies	\$10,490.88	\$6,767.85		\$17,258.73
Total 1240 Academic Support	\$4,440,886.37	\$3,549,442.82	\$164,908.97	\$8,155,238.16

LEA : 124158503 Unionville-Chadds Ford SD

Printed 10/30/2018 11:19:12 AM

General Fund (10)				
1241 Learning Support – Public	<u>Elementary</u>	<u>Secondary</u>	<u>Federal</u>	<u>Total</u>
100 <u>Personnel Services – Salaries</u>				
100 Personnel Services – Salaries	2,130,455.72	1,501,141.03	127,138.93	3,758,735.68
Total Personnel Services – Salaries	\$2,130,455.72	\$1,501,141.03	\$127,138.93	\$3,758,735.68
200 <u>Personnel Services – Employee Benefits</u>				
220 Social Security Contributions	153,456.04	116,974.34	3,598.26	274,028.64
230 PSERS Retirement Contributions	673,836.38	508,738.29	20,704.58	1,203,279.25
250 Unemployment Compensation	1,887.75	1,483.23		3,370.98
260 Workers' Compensation	9,025.55	7,091.50		16,117.05
270 Group Insurance – Self-Insurance	520,685.23	395,642.63	13,467.20	929,795.06
Total Personnel Services – Employee Benefits	\$1,358,890.95	\$1,029,929.99	\$37,770.04	\$2,426,590.98
300 <u>Purchased Professional and Technical Services</u>				
322 Professional Educational Services – lus	169,695.59	479,393.75		649,089.34
329 Professional Educational Services – Other	151,079.39	146,220.34		297,299.73
390 Other Purchased Professional and Technical Services		63.70		63.70
Total Purchased Professional and Technical Services	\$320,774.98	\$625,677.79		\$946,452.77
500 <u>Other Purchased Services</u>				
580 Travel	219.99			219.99
Total Other Purchased Services	\$219.99			\$219.99
600 <u>Supplies</u>				
610 General Supplies	8,685.33	6,767.85		15,453.18
Total Supplies	\$8,685.33	\$6,767.85		\$15,453.18
Total 1241 Learning Support – Public	\$3,819,026.97	\$3,163,516.66	\$164,908.97	\$7,147,452.60

LEA : 124158503 Unionville-Chadds Ford SD

Printed 10/30/2018 11:19:12 AM

General Fund (10)

1243 Gifted Support

	<u>Elementary</u>	<u>Secondary</u>	<u>Federal</u>	<u>Total</u>
100 <u>Personnel Services – Salaries</u>				
100 Personnel Services – Salaries	400,413.83	249,007.69		649,421.52
Total Personnel Services – Salaries	\$400,413.83	\$249,007.69		\$649,421.52
200 <u>Personnel Services – Employee Benefits</u>				
220 Social Security Contributions	29,097.68	18,138.82		47,236.50
230 PSERS Retirement Contributions	127,770.01	79,648.84		207,418.85
250 Unemployment Compensation	169.51	105.67		275.18
260 Workers' Compensation	1,690.81	1,054.01		2,744.82
270 Group Insurance – Self-Insurance	60,912.01	37,971.13		98,883.14
Total Personnel Services – Employee Benefits	\$219,640.02	\$136,918.47		\$356,558.49
600 <u>Supplies</u>				
610 General Supplies	1,805.55			1,805.55
Total Supplies	\$1,805.55			\$1,805.55
Total 1243 Gifted Support	\$621,859.40	\$385,926.16		\$1,007,785.56

LEA : 124158503 Unionville-Chadds Ford SD

Printed 10/30/2018 11:19:12 AM

General Fund (10)				
1270 Multi-Handicapped Support	<u>Elementary</u>	<u>Secondary</u>	<u>Federal</u>	<u>Total</u>
300 <u>Purchased Professional and Technical Services</u>				
322 Professional Educational Services – Ius	95,502.81	74,661.59		170,164.40
329 Professional Educational Services – Other	52,070.92	5,767.51		57,838.43
Total Purchased Professional and Technical Services	\$147,573.73	\$80,429.10		\$228,002.83
600 <u>Supplies</u>				
610 General Supplies		35.32		35.32
Total Supplies		\$35.32		\$35.32
Total 1270 Multi-Handicapped Support	\$147,573.73	\$80,464.42		\$228,038.15

LEA : 124158503 Unionville-Chadds Ford SD

Printed 10/30/2018 11:19:12 AM

General Fund (10)

1280 Early Intervention Support	<u>Elementary</u>	<u>Secondary</u>	<u>Federal</u>	<u>Total</u>
300 <u>Purchased Professional and Technical Services</u>				
322 Professional Educational Services – lus	4,592.20			4,592.20
Total Purchased Professional and Technical Services	\$4,592.20			\$4,592.20
Total 1280 Early Intervention Support	\$4,592.20			\$4,592.20

LEA : 124158503 Unionville-Chadds Ford SD

Printed 10/30/2018 11:19:12 AM

General Fund (10)				
1290 Special Programs - Other Support	<u>Elementary</u>	<u>Secondary</u>	<u>Federal</u>	<u>Total</u>
100 <u>Personnel Services – Salaries</u>				
100 Personnel Services – Salaries	52,111.57	54,925.89		107,037.46
Total Personnel Services – Salaries	\$52,111.57	\$54,925.89		\$107,037.46
200 <u>Personnel Services – Employee Benefits</u>				
220 Social Security Contributions	3,733.96	3,949.09		7,683.05
230 PSERS Retirement Contributions	16,396.08	17,340.72		33,736.80
250 Unemployment Compensation	16.72	17.68		34.40
260 Workers' Compensation	59.86	63.31		123.17
270 Group Insurance – Self-Insurance	88.84	93.95		182.79
Total Personnel Services – Employee Benefits	\$20,295.46	\$21,464.75		\$41,760.21
300 <u>Purchased Professional and Technical Services</u>				
322 Professional Educational Services – lus	3,174.70	3,174.70		6,349.40
329 Professional Educational Services – Other	44,733.19	2,263.23		46,996.42
330 Other Professional Services	91,092.50	404,819.40		495,911.90
Total Purchased Professional and Technical Services	\$139,000.39	\$410,257.33		\$549,257.72
400 <u>Purchased Property Services</u>				
430 Repairs and Maintenance Services	1,233.41	1,233.41		2,466.82
Total Purchased Property Services	\$1,233.41	\$1,233.41		\$2,466.82
500 <u>Other Purchased Services</u>				
562 Tuition To Pennsylvania Charter Schools	46,260.94	134,197.24		180,458.18
567 Tuition To Approved Private Schools (APS) and PA Chartered Schools for the Deaf and Blind		62,327.83		62,327.83
580 Travel	2,602.10	4,182.03		6,784.13
Total Other Purchased Services	\$48,863.04	\$200,707.10		\$249,570.14
600 <u>Supplies</u>				
610 General Supplies	4,265.10	23,394.00		27,659.10
630 Food	642.00	117.00		759.00
Total Supplies	\$4,907.10	\$23,511.00		\$28,418.10
800 <u>Other Objects</u>				
810 Dues and Fees	230.00			230.00
Total Other Objects	\$230.00			\$230.00
Total 1290 Special Programs - Other Support	\$266,640.97	\$712,099.48		\$978,740.45

LEA : 124158503 Unionville-Chadds Ford SD

Printed 10/30/2018 11:19:12 AM

General Fund (10)				
1300 Vocational Education	<u>Elementary</u>	<u>Secondary</u>	<u>Federal</u>	<u>Total</u>
300 <u>Purchased Professional and Technical Services</u>				
322 Professional Educational Services – lus		98,954.82		98,954.82
Total Purchased Professional and Technical Services		\$98,954.82		\$98,954.82
500 <u>Other Purchased Services</u>				
561 Tuition To Other School Districts Within the State		31,200.00		31,200.00
564 Tuition To Career and Technology Centers		692,437.00		692,437.00
Total Other Purchased Services		\$723,637.00		\$723,637.00
Total 1300 Vocational Education		\$822,591.82		\$822,591.82

LEA : 124158503 Unionville-Chadds Ford SD

Printed 10/30/2018 11:19:12 AM

General Fund (10)				
1400 Other Instructional Programs – Elementary / Secondary	<u>Elementary</u>	<u>Secondary</u>	<u>Federal</u>	<u>Total</u>
100 <u>Personnel Services – Salaries</u>				
100 Personnel Services – Salaries	1,048.74	9,483.50		10,532.24
Total Personnel Services – Salaries	\$1,048.74	\$9,483.50		\$10,532.24
200 <u>Personnel Services – Employee Benefits</u>				
220 Social Security Contributions	54.07	515.05		569.12
230 PSERS Retirement Contributions	237.41	2,261.61		2,499.02
260 Workers’ Compensation	16.72	124.05		140.77
Total Personnel Services – Employee Benefits	\$308.20	\$2,900.71		\$3,208.91
300 <u>Purchased Professional and Technical Services</u>				
329 Professional Educational Services – Other	620.55	38,327.03		38,947.58
Total Purchased Professional and Technical Services	\$620.55	\$38,327.03		\$38,947.58
500 <u>Other Purchased Services</u>				
561 Tuition To Other School Districts Within the State		61,670.74		61,670.74
580 Travel	40.96	1,044.41		1,085.37
596 Direct Payments To Intermediate Units		26,443.00		26,443.00
599 Other Miscellaneous Purchased Services		192,681.81		192,681.81
Total Other Purchased Services	\$40.96	\$281,839.96		\$281,880.92
Total 1400 Other Instructional Programs – Elementary / Secondary	\$2,018.45	\$332,551.20		\$334,569.65

LEA : 124158503 Unionville-Chadds Ford SD

Printed 10/30/2018 11:19:12 AM

General Fund (10)

1410 Drivers' Education

	<u>Elementary</u>	<u>Secondary</u>	<u>Federal</u>	<u>Total</u>
300 <u>Purchased Professional and Technical Services</u>				
329 Professional Educational Services – Other		33,793.08		33,793.08
Total Purchased Professional and Technical Services		\$33,793.08		\$33,793.08
Total 1410 Drivers' Education		\$33,793.08		\$33,793.08

LEA : 124158503 Unionville-Chadds Ford SD

Printed 10/30/2018 11:19:12 AM

General Fund (10)

1420 Summer School

	<u>Elementary</u>	<u>Secondary</u>	<u>Federal</u>	<u>Total</u>
100 <u>Personnel Services – Salaries</u>				
100 Personnel Services – Salaries		5,000.00		5,000.00
Total Personnel Services – Salaries		\$5,000.00		\$5,000.00
200 <u>Personnel Services – Employee Benefits</u>				
220 Social Security Contributions		284.56		284.56
230 PSERS Retirement Contributions		1,249.51		1,249.51
260 Workers’ Compensation		52.79		52.79
Total Personnel Services – Employee Benefits		\$1,586.86		\$1,586.86
Total 1420 Summer School		\$6,586.86		\$6,586.86

LEA : 124158503 Unionville-Chadds Ford SD

Printed 10/30/2018 11:19:12 AM

General Fund (10)				
1430 Homebound Instruction	<u>Elementary</u>	<u>Secondary</u>	<u>Federal</u>	<u>Total</u>
100 <u>Personnel Services – Salaries</u>				
100 Personnel Services – Salaries	1,048.74	4,483.50		5,532.24
Total Personnel Services – Salaries	\$1,048.74	\$4,483.50		\$5,532.24
200 <u>Personnel Services – Employee Benefits</u>				
220 Social Security Contributions	54.07	230.49		284.56
230 PSERS Retirement Contributions	237.41	1,012.10		1,249.51
260 Workers’ Compensation	16.72	71.26		87.98
Total Personnel Services – Employee Benefits	\$308.20	\$1,313.85		\$1,622.05
300 <u>Purchased Professional and Technical Services</u>				
329 Professional Educational Services – Other	620.55	4,533.95		5,154.50
Total Purchased Professional and Technical Services	\$620.55	\$4,533.95		\$5,154.50
500 <u>Other Purchased Services</u>				
580 Travel	40.96	1,044.41		1,085.37
Total Other Purchased Services	\$40.96	\$1,044.41		\$1,085.37
Total 1430 Homebound Instruction	\$2,018.45	\$11,375.71		\$13,394.16

LEA : 124158503 Unionville-Chadds Ford SD

Printed 10/30/2018 11:19:12 AM

General Fund (10)

1440 Alternative Regular Education Programs

Elementary Secondary Federal Total

500 Other Purchased Services

561 Tuition To Other School Districts Within the State		61,670.74		61,670.74
596 Direct Payments To Intermediate Units		26,443.00		26,443.00
599 Other Miscellaneous Purchased Services		192,681.81		192,681.81
Total Other Purchased Services		\$280,795.55		\$280,795.55
Total 1440 Alternative Regular Education Programs		\$280,795.55		\$280,795.55

LEA : 124158503 Unionville-Chadds Ford SD

Printed 10/30/2018 11:19:12 AM

General Fund (10)

1441 Adjudicated / Court-Placed Programs

Elementary Secondary Federal Total

500 Other Purchased Services

561 Tuition To Other School Districts Within the State		61,670.74		61,670.74
599 Other Miscellaneous Purchased Services		192,681.81		192,681.81
Total Other Purchased Services		\$254,352.55		\$254,352.55
Total 1441 Adjudicated / Court-Placed Programs		\$254,352.55		\$254,352.55

LEA : 124158503 Unionville-Chadds Ford SD

Printed 10/30/2018 11:19:12 AM

General Fund (10)

1442 Alternative Education Programs	<u>Elementary</u>	<u>Secondary</u>	<u>Federal</u>	<u>Total</u>
500 <u>Other Purchased Services</u>				
596 Direct Payments To Intermediate Units		26,443.00		26,443.00
Total Other Purchased Services		\$26,443.00		\$26,443.00
Total 1442 Alternative Education Programs		\$26,443.00		\$26,443.00

LEA : 124158503 Unionville-Chadds Ford SD

Printed 10/30/2018 11:19:17 AM

General Fund (10)

2000 Support Services

Total

100	<u>Personnel Services – Salaries</u>	
100	Personnel Services – Salaries	12,171,791.49
Total Personnel Services – Salaries		\$12,171,791.49
200	<u>Personnel Services – Employee Benefits</u>	
220	Social Security Contributions	892,477.04
230	PSERS Retirement Contributions	3,917,217.51
240	Tuition Reimbursement	304,652.60
250	Unemployment Compensation	7,154.74
260	Workers' Compensation	55,072.42
270	Group Insurance – Self-Insurance	2,784,699.51
Total Personnel Services – Employee Benefits		\$7,961,273.82
300	<u>Purchased Professional and Technical Services</u>	
322	Professional Educational Services – Ius	15,674.83
329	Professional Educational Services – Other	429,140.38
330	Other Professional Services	202,573.87
340	Technical Services	18,111.98
350	Security / Safety Services	2,735.00
Total Purchased Professional and Technical Services		\$668,236.06
400	<u>Purchased Property Services</u>	
410	Cleaning Services	31,748.36
420	Utility Services	120,521.37
430	Repairs and Maintenance Services	671,556.02
440	Rentals	6,073.91
Total Purchased Property Services		\$829,899.66
500	<u>Other Purchased Services</u>	
516	Student Transportation Services From the IU	3,687.24
520	Insurance – General	9,968.00
521	Fire Insurance	117,972.00
522	Automotive Liability Insurance	113,788.00
523	General Property and Liability Insurance	113,276.00
529	Other Insurance	126,445.00
530	Communications	12,632.35
549	Other Advertising/Public Relations	10,912.32
550	Printing and Binding	24,027.63
580	Travel	65,196.02
591	Services Purchased Locally	18,998.92
595	IU Payments By Withholding	42,096.90
Total Other Purchased Services		\$659,000.38
600	<u>Supplies</u>	
610	General Supplies	697,505.60
620	Energy	1,306,425.46
630	Food	26,265.87
640	Books and Periodicals	67,348.29

LEA : 124158503 Unionville-Chadds Ford SD

Printed 10/30/2018 11:19:17 AM

General Fund (10)

2000 Support Services

	Total
Total Supplies	\$2,097,545.22
700 <u>Property</u>	
752 Capital Equipment – Original and Additional	5,888.67
756 Capitalized Technology Hardware and Equipment– Original	294,870.65
762 Capitalized Equipment - Replacement	431,769.88
766 Capitalized Technology Hardware and Equipment– Replacement	412,289.57
768 Capitalized Technology Software - Replacement	7,674.55
Total Property	\$1,152,493.32
800 <u>Other Objects</u>	
810 Dues and Fees	30,562.93
Total Other Objects	\$30,562.93
Total 2000 Support Services	\$25,570,802.88

LEA : 124158503 Unionville-Chadds Ford SD

Printed 10/30/2018 11:19:17 AM

General Fund (10)

2100 Support Services – Students	Elementary	Secondary	Federal	Total
100 <u>Personnel Services – Salaries</u>				
100 Personnel Services – Salaries	1,042,685.80	1,266,779.42		2,309,465.22
Total Personnel Services – Salaries	\$1,042,685.80	\$1,266,779.42		\$2,309,465.22
200 <u>Personnel Services – Employee Benefits</u>				
220 Social Security Contributions	76,121.90	92,335.99		168,457.89
230 PSERS Retirement Contributions	334,256.73	405,453.88		739,710.61
250 Unemployment Compensation	494.97	605.76		1,100.73
260 Workers' Compensation	4,091.54	4,899.52		8,991.06
270 Group Insurance – Self-Insurance	195,569.99	235,594.43		431,164.42
Total Personnel Services – Employee Benefits	\$610,535.13	\$738,889.58		\$1,349,424.71
300 <u>Purchased Professional and Technical Services</u>				
322 Professional Educational Services – lus	13,624.96	2,049.87		15,674.83
329 Professional Educational Services – Other	38,251.86	37,163.34		75,415.20
330 Other Professional Services			7,222.00	7,222.00
Total Purchased Professional and Technical Services	\$51,876.82	\$39,213.21	\$7,222.00	\$98,312.03
500 <u>Other Purchased Services</u>				
549 Other Advertising/Public Relations	7,413.10			7,413.10
550 Printing and Binding	533.06			533.06
580 Travel	2,794.30	2,597.86		5,392.16
Total Other Purchased Services	\$10,740.46	\$2,597.86		\$13,338.32
600 <u>Supplies</u>				
610 General Supplies	7,628.21	6,071.58		13,699.79
630 Food	614.50			614.50
640 Books and Periodicals	260.91	1,543.04		1,803.95
Total Supplies	\$8,503.62	\$7,614.62		\$16,118.24
Total 2100 Support Services – Students	\$1,724,341.83	\$2,055,094.69	\$7,222.00	\$3,786,658.52

LEA : 124158503 Unionville-Chadds Ford SD

Printed 10/30/2018 11:19:17 AM

General Fund (10)				
2110 Supervision of Student Services	<u>Elementary</u>	<u>Secondary</u>	<u>Federal</u>	<u>Total</u>
100 <u>Personnel Services – Salaries</u>				
100 Personnel Services – Salaries	127,953.82	127,953.56		255,907.38
Total Personnel Services – Salaries	\$127,953.82	\$127,953.56		\$255,907.38
200 <u>Personnel Services – Employee Benefits</u>				
220 Social Security Contributions	9,390.39	9,390.39		18,780.78
230 PSERS Retirement Contributions	41,233.87	41,233.87		82,467.74
250 Unemployment Compensation	68.79	68.80		137.59
260 Workers' Compensation	598.23	598.23		1,196.46
270 Group Insurance – Self-Insurance	34,419.43	34,419.43		68,838.86
Total Personnel Services – Employee Benefits	\$85,710.71	\$85,710.72		\$171,421.43
300 <u>Purchased Professional and Technical Services</u>				
329 Professional Educational Services – Other	31,321.15	21,568.64		52,889.79
Total Purchased Professional and Technical Services	\$31,321.15	\$21,568.64		\$52,889.79
500 <u>Other Purchased Services</u>				
549 Other Advertising/Public Relations	7,413.10			7,413.10
550 Printing and Binding	533.06			533.06
580 Travel	2,249.30	987.93		3,237.23
Total Other Purchased Services	\$10,195.46	\$987.93		\$11,183.39
600 <u>Supplies</u>				
630 Food	614.50			614.50
640 Books and Periodicals	260.91			260.91
Total Supplies	\$875.41			\$875.41
Total 2110 Supervision of Student Services	\$256,056.55	\$236,220.85		\$492,277.40

LEA : 124158503 Unionville-Chadds Ford SD

Printed 10/30/2018 11:19:17 AM

General Fund (10)				
2119 Supervision of Student Services – All Other Supervision	<u>Elementary</u>	<u>Secondary</u>	<u>Federal</u>	<u>Total</u>
100 <u>Personnel Services – Salaries</u>				
100 Personnel Services – Salaries	127,953.82	127,953.56		255,907.38
Total Personnel Services – Salaries	\$127,953.82	\$127,953.56		\$255,907.38
200 <u>Personnel Services – Employee Benefits</u>				
220 Social Security Contributions	9,390.39	9,390.39		18,780.78
230 PSERS Retirement Contributions	41,233.87	41,233.87		82,467.74
250 Unemployment Compensation	68.79	68.80		137.59
260 Workers' Compensation	598.23	598.23		1,196.46
270 Group Insurance – Self-Insurance	34,419.43	34,419.43		68,838.86
Total Personnel Services – Employee Benefits	\$85,710.71	\$85,710.72		\$171,421.43
300 <u>Purchased Professional and Technical Services</u>				
329 Professional Educational Services – Other	31,321.15	21,568.64		52,889.79
Total Purchased Professional and Technical Services	\$31,321.15	\$21,568.64		\$52,889.79
500 <u>Other Purchased Services</u>				
549 Other Advertising/Public Relations	7,413.10			7,413.10
550 Printing and Binding	533.06			533.06
580 Travel	2,249.30	987.93		3,237.23
Total Other Purchased Services	\$10,195.46	\$987.93		\$11,183.39
600 <u>Supplies</u>				
630 Food	614.50			614.50
640 Books and Periodicals	260.91			260.91
Total Supplies	\$875.41			\$875.41
Total 2119 Supervision of Student Services – All Other Supervision	\$256,056.55	\$236,220.85		\$492,277.40

LEA : 124158503 Unionville-Chadds Ford SD

Printed 10/30/2018 11:19:17 AM

General Fund (10)				
2120 Guidance Services	<u>Elementary</u>	<u>Secondary</u>	<u>Federal</u>	<u>Total</u>
100 <u>Personnel Services – Salaries</u>				
100 Personnel Services – Salaries	683,188.68	907,282.56		1,590,471.24
Total Personnel Services – Salaries	\$683,188.68	\$907,282.56		\$1,590,471.24
200 <u>Personnel Services – Employee Benefits</u>				
220 Social Security Contributions	49,800.36	66,014.44		115,814.80
230 PSERS Retirement Contributions	218,676.95	289,874.09		508,551.04
250 Unemployment Compensation	340.19	450.96		791.15
260 Workers' Compensation	2,481.60	3,289.57		5,771.17
270 Group Insurance – Self-Insurance	122,932.20	162,956.64		285,888.84
Total Personnel Services – Employee Benefits	\$394,231.30	\$522,585.70		\$916,817.00
300 <u>Purchased Professional and Technical Services</u>				
329 Professional Educational Services – Other	6,930.71	15,594.70		22,525.41
330 Other Professional Services			7,222.00	7,222.00
Total Purchased Professional and Technical Services	\$6,930.71	\$15,594.70	\$7,222.00	\$29,747.41
500 <u>Other Purchased Services</u>				
580 Travel		1,292.92		1,292.92
Total Other Purchased Services		\$1,292.92		\$1,292.92
600 <u>Supplies</u>				
640 Books and Periodicals		1,543.04		1,543.04
Total Supplies		\$1,543.04		\$1,543.04
Total 2120 Guidance Services	\$1,084,350.69	\$1,448,298.92	\$7,222.00	\$2,539,871.61

LEA : 124158503 Unionville-Chadds Ford SD

Printed 10/30/2018 11:19:17 AM

General Fund (10)				
2140 Psychological Services				
	<u>Elementary</u>	<u>Secondary</u>	<u>Federal</u>	<u>Total</u>
100 <u>Personnel Services – Salaries</u>				
100 Personnel Services – Salaries	231,543.30	231,543.30		463,086.60
Total Personnel Services – Salaries	\$231,543.30	\$231,543.30		\$463,086.60
200 <u>Personnel Services – Employee Benefits</u>				
220 Social Security Contributions	16,931.15	16,931.16		33,862.31
230 PSERS Retirement Contributions	74,345.91	74,345.92		148,691.83
250 Unemployment Compensation	85.99	86.00		171.99
260 Workers' Compensation	1,011.71	1,011.72		2,023.43
270 Group Insurance – Self-Insurance	38,218.36	38,218.36		76,436.72
Total Personnel Services – Employee Benefits	\$130,593.12	\$130,593.16		\$261,186.28
300 <u>Purchased Professional and Technical Services</u>				
322 Professional Educational Services – lus	13,624.96	2,049.87		15,674.83
Total Purchased Professional and Technical Services	\$13,624.96	\$2,049.87		\$15,674.83
500 <u>Other Purchased Services</u>				
580 Travel	545.00	317.01		862.01
Total Other Purchased Services	\$545.00	\$317.01		\$862.01
600 <u>Supplies</u>				
610 General Supplies	7,628.21	6,071.58		13,699.79
Total Supplies	\$7,628.21	\$6,071.58		\$13,699.79
Total 2140 Psychological Services	\$383,934.59	\$370,574.92		\$754,509.51

LEA : 124158503 Unionville-Chadds Ford SD

Printed 10/30/2018 11:19:17 AM

General Fund (10)

2200 Support Services – Instructional Staff	Elementary	Secondary	Federal	Total
100 Personnel Services – Salaries				
100 Personnel Services – Salaries	934,439.95	630,794.59		1,565,234.54
Total Personnel Services – Salaries	\$934,439.95	\$630,794.59		\$1,565,234.54
200 Personnel Services – Employee Benefits				
220 Social Security Contributions	68,259.76	45,859.42		114,119.18
230 PSERS Retirement Contributions	299,082.99	200,721.48		499,804.47
240 Tuition Reimbursement	122,328.40	122,328.40		244,656.80
250 Unemployment Compensation	535.23	324.71		859.94
260 Workers' Compensation	5,342.83	3,841.77		9,184.60
270 Group Insurance – Self-Insurance	167,131.48	104,054.52		271,186.00
Total Personnel Services – Employee Benefits	\$662,680.69	\$477,130.30		\$1,139,810.99
300 Purchased Professional and Technical Services				
329 Professional Educational Services – Other	62,988.65	3,495.55	39,897.45	106,381.65
Total Purchased Professional and Technical Services	\$62,988.65	\$3,495.55	\$39,897.45	\$106,381.65
400 Purchased Property Services				
430 Repairs and Maintenance Services	385,598.83	5,670.00		391,268.83
Total Purchased Property Services	\$385,598.83	\$5,670.00		\$391,268.83
500 Other Purchased Services				
530 Communications	(40,041.30)	1,531.88		(38,509.42)
580 Travel	17,530.28	3,127.60	20,445.79	41,103.67
591 Services Purchased Locally	868.85	1,029.25		1,898.10
Total Other Purchased Services	(\$21,642.17)	\$5,688.73	\$20,445.79	\$4,492.35
600 Supplies				
610 General Supplies	60,026.27	83,012.59		143,038.86
630 Food	1,295.38	2,144.24		3,439.62
640 Books and Periodicals	15,174.34	34,318.54		49,492.88
Total Supplies	\$76,495.99	\$119,475.37		\$195,971.36
700 Property				
756 Capitalized Technology Hardware and Equipment– Original	213,201.11	81,669.54		294,870.65
762 Capitalized Equipment - Replacement	29,517.77	35,732.65		65,250.42
766 Capitalized Technology Hardware and Equipment– Replacement	263,777.95	148,511.62		412,289.57
768 Capitalized Technology Software - Replacement	7,674.55			7,674.55
Total Property	\$514,171.38	\$265,913.81		\$780,085.19
Total 2200 Support Services – Instructional Staff	\$2,614,733.32	\$1,508,168.35	\$60,343.24	\$4,183,244.91

LEA : 124158503 Unionville-Chadds Ford SD

Printed 10/30/2018 11:19:17 AM

General Fund (10)				
2220 Technology Support Services	<u>Elementary</u>	<u>Secondary</u>	<u>Federal</u>	<u>Total</u>
100 <u>Personnel Services – Salaries</u>				
100 Personnel Services – Salaries	393,806.88	229,688.15		623,495.03
Total Personnel Services – Salaries	\$393,806.88	\$229,688.15		\$623,495.03
200 <u>Personnel Services – Employee Benefits</u>				
220 Social Security Contributions	28,683.37	16,845.79		45,529.16
230 PSERS Retirement Contributions	125,950.73	73,971.06		199,921.79
250 Unemployment Compensation	195.04	114.54		309.58
260 Workers' Compensation	2,183.72	1,282.50		3,466.22
270 Group Insurance – Self-Insurance	60,438.19	35,495.45		95,933.64
Total Personnel Services – Employee Benefits	\$217,451.05	\$127,709.34		\$345,160.39
400 <u>Purchased Property Services</u>				
430 Repairs and Maintenance Services	4,836.07	1,050.00		5,886.07
Total Purchased Property Services	\$4,836.07	\$1,050.00		\$5,886.07
600 <u>Supplies</u>				
610 General Supplies	34,811.26	59,438.46		94,249.72
Total Supplies	\$34,811.26	\$59,438.46		\$94,249.72
700 <u>Property</u>				
756 Capitalized Technology Hardware and Equipment– Original	27,174.57	4,800.03		31,974.60
768 Capitalized Technology Software - Replacement	7,674.55			7,674.55
Total Property	\$34,849.12	\$4,800.03		\$39,649.15
Total 2220 Technology Support Services	\$685,754.38	\$422,685.98		\$1,108,440.36

LEA : 124158503 Unionville-Chadds Ford SD

Printed 10/30/2018 11:19:17 AM

General Fund (10)				
2240 Computer-Assisted Instruction Support Services	<u>Elementary</u>	<u>Secondary</u>	<u>Federal</u>	<u>Total</u>
300 <u>Purchased Professional and Technical Services</u>				
329 Professional Educational Services – Other	58,491.15			58,491.15
Total Purchased Professional and Technical Services	\$58,491.15			\$58,491.15
400 <u>Purchased Property Services</u>				
430 Repairs and Maintenance Services	380,762.76	4,620.00		385,382.76
Total Purchased Property Services	\$380,762.76	\$4,620.00		\$385,382.76
500 <u>Other Purchased Services</u>				
530 Communications	(40,281.36)	1,291.82		(38,989.54)
580 Travel	12,807.49	126.90		12,934.39
Total Other Purchased Services	(\$27,473.87)	\$1,418.72		(\$26,055.15)
600 <u>Supplies</u>				
610 General Supplies	20,748.31	17,321.84		38,070.15
Total Supplies	\$20,748.31	\$17,321.84		\$38,070.15
700 <u>Property</u>				
756 Capitalized Technology Hardware and Equipment– Original	186,026.54	76,869.51		262,896.05
766 Capitalized Technology Hardware and Equipment– Replacement	263,777.95	148,511.62		412,289.57
Total Property	\$449,804.49	\$225,381.13		\$675,185.62
Total 2240 Computer-Assisted Instruction Support Services	\$882,332.84	\$248,741.69		\$1,131,074.53

LEA : 124158503 Unionville-Chadds Ford SD

Printed 10/30/2018 11:19:17 AM

General Fund (10)					
2250 School Library Services		Elementary	Secondary	Federal	Total
100 Personnel Services – Salaries					
100	Personnel Services – Salaries	346,072.43	189,359.62		535,432.05
Total Personnel Services – Salaries		\$346,072.43	\$189,359.62		\$535,432.05
200 Personnel Services – Employee Benefits					
220	Social Security Contributions	25,339.82	13,644.52		38,984.34
230	PSERS Retirement Contributions	111,268.97	59,914.06		171,183.03
250	Unemployment Compensation	290.66	156.51		447.17
260	Workers' Compensation	1,566.84	843.68		2,410.52
270	Group Insurance – Self-Insurance	86,305.29	46,472.08		132,777.37
Total Personnel Services – Employee Benefits		\$224,771.58	\$121,030.85		\$345,802.43
600 Supplies					
640	Books and Periodicals	15,174.34	34,279.54		49,453.88
Total Supplies		\$15,174.34	\$34,279.54		\$49,453.88
Total 2250 School Library Services		\$586,018.35	\$344,670.01		\$930,688.36

LEA : 124158503 Unionville-Chadds Ford SD

Printed 10/30/2018 11:19:17 AM

General Fund (10)

2260 Instruction and Curriculum Development Services	Elementary	Secondary	Federal	Total
100 <u>Personnel Services – Salaries</u>				
100 Personnel Services – Salaries	180,488.64	195,223.07		375,711.71
Total Personnel Services – Salaries	\$180,488.64	\$195,223.07		\$375,711.71
200 <u>Personnel Services – Employee Benefits</u>				
220 Social Security Contributions	13,112.40	14,205.10		27,317.50
230 PSERS Retirement Contributions	57,577.47	62,375.60		119,953.07
250 Unemployment Compensation	49.53	53.66		103.19
260 Workers' Compensation	1,452.64	1,573.70		3,026.34
270 Group Insurance – Self-Insurance	20,388.00	22,086.99		42,474.99
Total Personnel Services – Employee Benefits	\$92,580.04	\$100,295.05		\$192,875.09
300 <u>Purchased Professional and Technical Services</u>				
329 Professional Educational Services – Other	3,000.00	3,000.00		6,000.00
Total Purchased Professional and Technical Services	\$3,000.00	\$3,000.00		\$6,000.00
500 <u>Other Purchased Services</u>				
530 Communications	240.06	240.06		480.12
580 Travel	755.76	755.75		1,511.51
Total Other Purchased Services	\$995.82	\$995.81		\$1,991.63
600 <u>Supplies</u>				
610 General Supplies	1,967.64	3,366.74		5,334.38
630 Food	709.13	679.82		1,388.95
640 Books and Periodicals		39.00		39.00
Total Supplies	\$2,676.77	\$4,085.56		\$6,762.33
700 <u>Property</u>				
762 Capitalized Equipment - Replacement	29,517.77	35,732.65		65,250.42
Total Property	\$29,517.77	\$35,732.65		\$65,250.42
Total 2260 Instruction and Curriculum Development Services	\$309,259.04	\$339,332.14		\$648,591.18

LEA : 124158503 Unionville-Chadds Ford SD

Printed 10/30/2018 11:19:17 AM

General Fund (10)				
2270 Instructional Staff Professional Development Services	<u>Elementary</u>	<u>Secondary</u>	<u>Federal</u>	<u>Total</u>
100 <u>Personnel Services – Salaries</u>				
100 Personnel Services – Salaries	1,017.00	2,856.00		3,873.00
Total Personnel Services – Salaries	\$1,017.00	\$2,856.00		\$3,873.00
200 <u>Personnel Services – Employee Benefits</u>				
220 Social Security Contributions	148.14	148.14		296.28
240 Tuition Reimbursement	122,328.40	122,328.40		244,656.80
260 Workers’ Compensation	87.90	88.05		175.95
Total Personnel Services – Employee Benefits	\$122,564.44	\$122,564.59		\$245,129.03
300 <u>Purchased Professional and Technical Services</u>				
329 Professional Educational Services – Other	1,497.50	495.55	39,897.45	41,890.50
Total Purchased Professional and Technical Services	\$1,497.50	\$495.55	\$39,897.45	\$41,890.50
500 <u>Other Purchased Services</u>				
580 Travel	3,967.03	2,244.95	20,445.79	26,657.77
591 Services Purchased Locally	868.85	1,029.25		1,898.10
Total Other Purchased Services	\$4,835.88	\$3,274.20	\$20,445.79	\$28,555.87
600 <u>Supplies</u>				
610 General Supplies	742.51	2,114.50		2,857.01
630 Food	443.75	1,321.92		1,765.67
Total Supplies	\$1,186.26	\$3,436.42		\$4,622.68
Total 2270 Instructional Staff Professional Development Services	\$131,101.08	\$132,626.76	\$60,343.24	\$324,071.08

LEA : 124158503 Unionville-Chadds Ford SD

Printed 10/30/2018 11:19:17 AM

General Fund (10)				
2290 Other Instructional Staff Services	<u>Elementary</u>	<u>Secondary</u>	<u>Federal</u>	<u>Total</u>
100 <u>Personnel Services – Salaries</u>				
100 Personnel Services – Salaries	13,055.00	13,667.75		26,722.75
Total Personnel Services – Salaries	\$13,055.00	\$13,667.75		\$26,722.75
200 <u>Personnel Services – Employee Benefits</u>				
220 Social Security Contributions	976.03	1,015.87		1,991.90
230 PSERS Retirement Contributions	4,285.82	4,460.76		8,746.58
260 Workers’ Compensation	51.73	53.84		105.57
Total Personnel Services – Employee Benefits	\$5,313.58	\$5,530.47		\$10,844.05
600 <u>Supplies</u>				
610 General Supplies	1,756.55	771.05		2,527.60
630 Food	142.50	142.50		285.00
Total Supplies	\$1,899.05	\$913.55		\$2,812.60
Total 2290 Other Instructional Staff Services	\$20,267.63	\$20,111.77		\$40,379.40

LEA : 124158503 Unionville-Chadds Ford SD

Printed 10/30/2018 11:19:17 AM

General Fund (10)

2300 Support Services – Administration	Elementary	Secondary	Federal	Total
100 <u>Personnel Services – Salaries</u>				
100 Personnel Services – Salaries	1,095,075.65	912,138.73		2,430,840.79
Total Personnel Services – Salaries	\$1,095,075.65	\$912,138.73		\$2,430,840.79
200 <u>Personnel Services – Employee Benefits</u>				
220 Social Security Contributions	80,444.34	65,818.09		178,205.57
230 PSERS Retirement Contributions	353,236.81	289,011.93		782,193.99
250 Unemployment Compensation	435.13	356.02		894.34
260 Workers' Compensation	4,780.57	3,911.37		10,240.30
270 Group Insurance – Self-Insurance	177,090.24	144,892.01		370,838.91
Total Personnel Services – Employee Benefits	\$615,987.09	\$503,989.42		\$1,342,373.11
300 <u>Purchased Professional and Technical Services</u>				
329 Professional Educational Services – Other	4,999.03	2,387.58		81,548.72
330 Other Professional Services				118,330.04
Total Purchased Professional and Technical Services	\$4,999.03	\$2,387.58		\$199,878.76
400 <u>Purchased Property Services</u>				
430 Repairs and Maintenance Services		19,013.10		19,013.10
Total Purchased Property Services		\$19,013.10		\$19,013.10
500 <u>Other Purchased Services</u>				
520 Insurance – General				9,968.00
530 Communications	28,566.68	10,920.76		39,564.62
549 Other Advertising/Public Relations				3,499.22
550 Printing and Binding	3,666.55	786.08		4,452.63
580 Travel				3,309.17
Total Other Purchased Services	\$32,233.23	\$11,706.84		\$60,793.64
600 <u>Supplies</u>				
610 General Supplies	7,007.48	20,412.86		29,354.04
630 Food	3,757.10	11,333.71		20,130.88
640 Books and Periodicals				5,302.57
Total Supplies	\$10,764.58	\$31,746.57		\$54,787.49
800 <u>Other Objects</u>				
810 Dues and Fees				29,217.15
Total Other Objects				\$29,217.15
Total 2300 Support Services – Administration	\$1,759,059.58	\$1,480,982.24		\$4,136,904.04

LEA : 124158503 Unionville-Chadds Ford SD

Printed 10/30/2018 11:19:17 AM

General Fund (10)				
2310 Board Services	<u>Elementary</u>	<u>Secondary</u>	<u>Federal</u>	<u>Total</u>
300 <u>Purchased Professional and Technical Services</u>				
329 Professional Educational Services – Other				34,218.50
Total Purchased Professional and Technical Services				\$34,218.50
500 <u>Other Purchased Services</u>				
520 Insurance – General				1,057.00
549 Other Advertising/Public Relations				3,499.22
580 Travel				297.00
Total Other Purchased Services				\$4,853.22
600 <u>Supplies</u>				
630 Food				1,742.87
Total Supplies				\$1,742.87
800 <u>Other Objects</u>				
810 Dues and Fees				20,179.15
Total Other Objects				\$20,179.15
Total 2310 Board Services				\$60,993.74

LEA : 124158503 Unionville-Chadds Ford SD

Printed 10/30/2018 11:19:17 AM

General Fund (10)				
2330 Tax Assessment and Collection Services	<u>Elementary</u>	<u>Secondary</u>	<u>Federal</u>	<u>Total</u>
100 <u>Personnel Services – Salaries</u>				
100 Personnel Services – Salaries				950.75
Total Personnel Services – Salaries				\$950.75
200 <u>Personnel Services – Employee Benefits</u>				
220 Social Security Contributions				72.73
Total Personnel Services – Employee Benefits				\$72.73
300 <u>Purchased Professional and Technical Services</u>				
329 Professional Educational Services – Other				3,998.40
Total Purchased Professional and Technical Services				\$3,998.40
500 <u>Other Purchased Services</u>				
520 Insurance – General				8,911.00
530 Communications				77.18
Total Other Purchased Services				\$8,988.18
600 <u>Supplies</u>				
610 General Supplies				1,933.70
Total Supplies				\$1,933.70
Total 2330 Tax Assessment and Collection Services				\$15,943.76

LEA : 124158503 Unionville-Chadds Ford SD

Printed 10/30/2018 11:19:17 AM

General Fund (10)

2340 Staff Relations and Negotiations Services

Elementary

Secondary

Federal

Total

300 Purchased Professional and Technical Services

330 Other Professional Services

1,420.00

Total Purchased Professional and Technical Services

\$1,420.00

Total 2340 Staff Relations and Negotiations Services

\$1,420.00

LEA : 124158503 Unionville-Chadds Ford SD

Printed 10/30/2018 11:19:17 AM

General Fund (10)

2350 Legal and Accounting Services	<u>Elementary</u>	<u>Secondary</u>	<u>Federal</u>	<u>Total</u>
300 <u>Purchased Professional and Technical Services</u>				
330 Other Professional Services				98,898.51
Total Purchased Professional and Technical Services				\$98,898.51
Total 2350 Legal and Accounting Services				\$98,898.51

LEA : 124158503 Unionville-Chadds Ford SD

Printed 10/30/2018 11:19:17 AM

General Fund (10)				
2360 Office of the Superintendent / Executive Director Services	<u>Elementary</u>	<u>Secondary</u>	<u>Federal</u>	<u>Total</u>
100 <u>Personnel Services – Salaries</u>				
100 Personnel Services – Salaries				422,675.66
Total Personnel Services – Salaries				\$422,675.66
200 <u>Personnel Services – Employee Benefits</u>				
220 Social Security Contributions				31,870.41
230 PSERS Retirement Contributions				139,945.25
250 Unemployment Compensation				103.19
260 Workers' Compensation				1,548.36
270 Group Insurance – Self-Insurance				48,856.66
Total Personnel Services – Employee Benefits				\$222,323.87
300 <u>Purchased Professional and Technical Services</u>				
329 Professional Educational Services – Other				35,945.21
330 Other Professional Services				18,011.53
Total Purchased Professional and Technical Services				\$53,956.74
500 <u>Other Purchased Services</u>				
530 Communications	6,105.17	6,105.18		12,210.35
580 Travel				3,012.17
Total Other Purchased Services	\$6,105.17	\$6,105.18		\$15,222.52
600 <u>Supplies</u>				
630 Food				3,297.20
640 Books and Periodicals				5,302.57
Total Supplies				\$8,599.77
800 <u>Other Objects</u>				
810 Dues and Fees				9,038.00
Total Other Objects				\$9,038.00
Total 2360 Office of the Superintendent / Executive Director Services	\$6,105.17	\$6,105.18		\$731,816.56

LEA : 124158503 Unionville-Chadds Ford SD

Printed 10/30/2018 11:19:17 AM

General Fund (10)

2380 Office of the Principal Services	Elementary	Secondary	Federal	Total
100 <u>Personnel Services – Salaries</u>				
100 Personnel Services – Salaries	1,095,075.65	912,138.73		2,007,214.38
Total Personnel Services – Salaries	\$1,095,075.65	\$912,138.73		\$2,007,214.38
200 <u>Personnel Services – Employee Benefits</u>				
220 Social Security Contributions	80,444.34	65,818.09		146,262.43
230 PSERS Retirement Contributions	353,236.81	289,011.93		642,248.74
250 Unemployment Compensation	435.13	356.02		791.15
260 Workers' Compensation	4,780.57	3,911.37		8,691.94
270 Group Insurance – Self-Insurance	177,090.24	144,892.01		321,982.25
Total Personnel Services – Employee Benefits	\$615,987.09	\$503,989.42		\$1,119,976.51
300 <u>Purchased Professional and Technical Services</u>				
329 Professional Educational Services – Other	4,999.03	2,387.58		7,386.61
Total Purchased Professional and Technical Services	\$4,999.03	\$2,387.58		\$7,386.61
400 <u>Purchased Property Services</u>				
430 Repairs and Maintenance Services		19,013.10		19,013.10
Total Purchased Property Services		\$19,013.10		\$19,013.10
500 <u>Other Purchased Services</u>				
530 Communications	22,461.51	4,815.58		27,277.09
550 Printing and Binding	3,666.55	786.08		4,452.63
Total Other Purchased Services	\$26,128.06	\$5,601.66		\$31,729.72
600 <u>Supplies</u>				
610 General Supplies	7,007.48	20,412.86		27,420.34
630 Food	3,757.10	11,333.71		15,090.81
Total Supplies	\$10,764.58	\$31,746.57		\$42,511.15
Total 2380 Office of the Principal Services	\$1,752,954.41	\$1,474,877.06		\$3,227,831.47

LEA : 124158503 Unionville-Chadds Ford SD

Printed 10/30/2018 11:19:17 AM

General Fund (10)				
2400 Support Services – Pupil Health	<u>Elementary</u>	<u>Secondary</u>	<u>Federal</u>	<u>Total</u>
100 <u>Personnel Services – Salaries</u>				
100 Personnel Services – Salaries				425,060.46
Total Personnel Services – Salaries				\$425,060.46
200 <u>Personnel Services – Employee Benefits</u>				
220 Social Security Contributions				31,016.74
230 PSERS Retirement Contributions				136,196.72
250 Unemployment Compensation				343.98
260 Workers' Compensation				1,970.64
270 Group Insurance – Self-Insurance				66,755.38
Total Personnel Services – Employee Benefits				\$236,283.46
300 <u>Purchased Professional and Technical Services</u>				
329 Professional Educational Services – Other				8,378.00
Total Purchased Professional and Technical Services				\$8,378.00
400 <u>Purchased Property Services</u>				
430 Repairs and Maintenance Services				210.00
Total Purchased Property Services				\$210.00
500 <u>Other Purchased Services</u>				
580 Travel				802.93
Total Other Purchased Services				\$802.93
600 <u>Supplies</u>				
610 General Supplies				7,674.34
640 Books and Periodicals				10,748.89
Total Supplies				\$18,423.23
700 <u>Property</u>				
762 Capitalized Equipment - Replacement				1,220.14
Total Property				\$1,220.14
Total 2400 Support Services – Pupil Health				\$690,378.22

LEA : 124158503 Unionville-Chadds Ford SD

Printed 10/30/2018 11:19:17 AM

General Fund (10)				
2440 Nursing Services				
	<u>Elementary</u>	<u>Secondary</u>	<u>Federal</u>	<u>Total</u>
100 <u>Personnel Services – Salaries</u>				
100 Personnel Services – Salaries				425,060.46
Total Personnel Services – Salaries				\$425,060.46
200 <u>Personnel Services – Employee Benefits</u>				
220 Social Security Contributions				31,016.74
230 PSERS Retirement Contributions				136,196.72
250 Unemployment Compensation				343.98
260 Workers' Compensation				1,970.64
270 Group Insurance – Self-Insurance				66,755.38
Total Personnel Services – Employee Benefits				\$236,283.46
300 <u>Purchased Professional and Technical Services</u>				
329 Professional Educational Services – Other				8,378.00
Total Purchased Professional and Technical Services				\$8,378.00
400 <u>Purchased Property Services</u>				
430 Repairs and Maintenance Services				210.00
Total Purchased Property Services				\$210.00
500 <u>Other Purchased Services</u>				
580 Travel				802.93
Total Other Purchased Services				\$802.93
600 <u>Supplies</u>				
610 General Supplies				7,674.34
640 Books and Periodicals				10,748.89
Total Supplies				\$18,423.23
700 <u>Property</u>				
762 Capitalized Equipment - Replacement				1,220.14
Total Property				\$1,220.14
Total 2440 Nursing Services				\$690,378.22

LEA : 124158503 Unionville-Chadds Ford SD

Printed 10/30/2018 11:19:17 AM

General Fund (10)				
2500 Support Services – Business	<u>Elementary</u>	<u>Secondary</u>	<u>Federal</u>	<u>Total</u>
100 <u>Personnel Services – Salaries</u>				
100 Personnel Services – Salaries				580,233.40
Total Personnel Services – Salaries				\$580,233.40
200 <u>Personnel Services – Employee Benefits</u>				
220 Social Security Contributions				42,399.03
230 PSERS Retirement Contributions				186,177.16
250 Unemployment Compensation				206.39
260 Workers' Compensation				2,621.66
270 Group Insurance – Self-Insurance				63,352.25
Total Personnel Services – Employee Benefits				\$294,756.49
300 <u>Purchased Professional and Technical Services</u>				
329 Professional Educational Services – Other				80,431.00
Total Purchased Professional and Technical Services				\$80,431.00
400 <u>Purchased Property Services</u>				
430 Repairs and Maintenance Services				32,994.35
Total Purchased Property Services				\$32,994.35
500 <u>Other Purchased Services</u>				
530 Communications				735.25
580 Travel				8,520.22
591 Services Purchased Locally				17,100.82
Total Other Purchased Services				\$26,356.29
600 <u>Supplies</u>				
610 General Supplies				28,726.56
630 Food				103.09
Total Supplies				\$28,829.65
700 <u>Property</u>				
752 Capital Equipment – Original and Additional				2,467.67
Total Property				\$2,467.67
800 <u>Other Objects</u>				
810 Dues and Fees				1,345.78
Total Other Objects				\$1,345.78
Total 2500 Support Services – Business				\$1,047,414.63

LEA : 124158503 Unionville-Chadds Ford SD

Printed 10/30/2018 11:19:17 AM

General Fund (10)				
2510 Fiscal Services				
	<u>Elementary</u>	<u>Secondary</u>	<u>Federal</u>	<u>Total</u>
100 <u>Personnel Services – Salaries</u>				
100 Personnel Services – Salaries				573,838.40
Total Personnel Services – Salaries				\$573,838.40
200 <u>Personnel Services – Employee Benefits</u>				
220 Social Security Contributions				41,910.03
230 PSERS Retirement Contributions				186,177.16
250 Unemployment Compensation				206.39
260 Workers' Compensation				2,621.66
270 Group Insurance – Self-Insurance				63,352.25
Total Personnel Services – Employee Benefits				\$294,267.49
300 <u>Purchased Professional and Technical Services</u>				
329 Professional Educational Services – Other				80,431.00
Total Purchased Professional and Technical Services				\$80,431.00
400 <u>Purchased Property Services</u>				
430 Repairs and Maintenance Services				32,994.35
Total Purchased Property Services				\$32,994.35
500 <u>Other Purchased Services</u>				
530 Communications				735.25
580 Travel				8,520.22
Total Other Purchased Services				\$9,255.47
600 <u>Supplies</u>				
610 General Supplies				28,726.56
630 Food				103.09
Total Supplies				\$28,829.65
700 <u>Property</u>				
752 Capital Equipment – Original and Additional				2,467.67
Total Property				\$2,467.67
800 <u>Other Objects</u>				
810 Dues and Fees				1,345.78
Total Other Objects				\$1,345.78
Total 2510 Fiscal Services				\$1,023,429.81

LEA : 124158503 Unionville-Chadds Ford SD

Printed 10/30/2018 11:19:17 AM

General Fund (10)				
2511 Supervision of Fiscal Services - Head of Component	<u>Elementary</u>	<u>Secondary</u>	<u>Federal</u>	<u>Total</u>
100 <u>Personnel Services – Salaries</u>				
100 Personnel Services – Salaries				320,660.80
Total Personnel Services – Salaries				\$320,660.80
200 <u>Personnel Services – Employee Benefits</u>				
220 Social Security Contributions				22,541.94
230 PSERS Retirement Contributions				103,717.21
250 Unemployment Compensation				115.33
260 Workers' Compensation				1,464.98
270 Group Insurance – Self-Insurance				35,401.23
Total Personnel Services – Employee Benefits				\$163,240.69
300 <u>Purchased Professional and Technical Services</u>				
329 Professional Educational Services – Other				39,720.63
Total Purchased Professional and Technical Services				\$39,720.63
400 <u>Purchased Property Services</u>				
430 Repairs and Maintenance Services				8,248.59
Total Purchased Property Services				\$8,248.59
500 <u>Other Purchased Services</u>				
530 Communications				50.00
580 Travel				4,228.34
Total Other Purchased Services				\$4,278.34
600 <u>Supplies</u>				
610 General Supplies				7,181.64
630 Food				103.09
Total Supplies				\$7,284.73
700 <u>Property</u>				
752 Capital Equipment – Original and Additional				2,467.67
Total Property				\$2,467.67
800 <u>Other Objects</u>				
810 Dues and Fees				336.45
Total Other Objects				\$336.45
Total 2511 Supervision of Fiscal Services - Head of Component				\$546,237.90

LEA : 124158503 Unionville-Chadds Ford SD

Printed 10/30/2018 11:19:17 AM

General Fund (10)				
2513 Receiving and Disbursing Funds Services	<u>Elementary</u>	<u>Secondary</u>	<u>Federal</u>	<u>Total</u>
100 <u>Personnel Services – Salaries</u>				
100 Personnel Services – Salaries				121,284.80
Total Personnel Services – Salaries				\$121,284.80
200 <u>Personnel Services – Employee Benefits</u>				
220 Social Security Contributions				9,278.29
230 PSERS Retirement Contributions				39,502.46
250 Unemployment Compensation				43.62
260 Workers' Compensation				554.11
270 Group Insurance – Self-Insurance				13,389.95
Total Personnel Services – Employee Benefits				\$62,768.43
300 <u>Purchased Professional and Technical Services</u>				
329 Professional Educational Services – Other				4,133.00
Total Purchased Professional and Technical Services				\$4,133.00
400 <u>Purchased Property Services</u>				
430 Repairs and Maintenance Services				8,248.59
Total Purchased Property Services				\$8,248.59
500 <u>Other Purchased Services</u>				
530 Communications				685.25
580 Travel				622.38
Total Other Purchased Services				\$1,307.63
600 <u>Supplies</u>				
610 General Supplies				7,181.64
Total Supplies				\$7,181.64
800 <u>Other Objects</u>				
810 Dues and Fees				336.45
Total Other Objects				\$336.45
Total 2513 Receiving and Disbursing Funds Services				\$205,260.54

LEA : 124158503 Unionville-Chadds Ford SD

Printed 10/30/2018 11:19:17 AM

General Fund (10)				
2514 Payroll Services	<u>Elementary</u>	<u>Secondary</u>	<u>Federal</u>	<u>Total</u>
100 <u>Personnel Services – Salaries</u>				
100 Personnel Services – Salaries				60,382.40
Total Personnel Services – Salaries				\$60,382.40
200 <u>Personnel Services – Employee Benefits</u>				
220 Social Security Contributions				4,619.25
230 PSERS Retirement Contributions				19,666.55
250 Unemployment Compensation				21.72
260 Workers' Compensation				275.87
270 Group Insurance – Self-Insurance				6,666.27
Total Personnel Services – Employee Benefits				\$31,249.66
300 <u>Purchased Professional and Technical Services</u>				
329 Professional Educational Services – Other				10,477.37
Total Purchased Professional and Technical Services				\$10,477.37
400 <u>Purchased Property Services</u>				
430 Repairs and Maintenance Services				8,248.59
Total Purchased Property Services				\$8,248.59
500 <u>Other Purchased Services</u>				
580 Travel				3,669.50
Total Other Purchased Services				\$3,669.50
600 <u>Supplies</u>				
610 General Supplies				7,181.64
Total Supplies				\$7,181.64
800 <u>Other Objects</u>				
810 Dues and Fees				336.45
Total Other Objects				\$336.45
Total 2514 Payroll Services				\$121,545.61

LEA : 124158503 Unionville-Chadds Ford SD

Printed 10/30/2018 11:19:17 AM

General Fund (10)

2515 Financial Accounting Services	<u>Elementary</u>	<u>Secondary</u>	<u>Federal</u>	<u>Total</u>
100 <u>Personnel Services – Salaries</u>				
100 Personnel Services – Salaries				71,510.40
Total Personnel Services – Salaries				\$71,510.40
200 <u>Personnel Services – Employee Benefits</u>				
220 Social Security Contributions				5,470.55
230 PSERS Retirement Contributions				23,290.94
250 Unemployment Compensation				25.72
260 Workers' Compensation				326.70
270 Group Insurance – Self-Insurance				7,894.80
Total Personnel Services – Employee Benefits				\$37,008.71
300 <u>Purchased Professional and Technical Services</u>				
329 Professional Educational Services – Other				26,100.00
Total Purchased Professional and Technical Services				\$26,100.00
400 <u>Purchased Property Services</u>				
430 Repairs and Maintenance Services				8,248.58
Total Purchased Property Services				\$8,248.58
600 <u>Supplies</u>				
610 General Supplies				7,181.64
Total Supplies				\$7,181.64
800 <u>Other Objects</u>				
810 Dues and Fees				336.43
Total Other Objects				\$336.43
Total 2515 Financial Accounting Services				\$150,385.76

LEA : 124158503 Unionville-Chadds Ford SD

Printed 10/30/2018 11:19:17 AM

General Fund (10)				
2590 Other Support Services – Business	<u>Elementary</u>	<u>Secondary</u>	<u>Federal</u>	<u>Total</u>
100 <u>Personnel Services – Salaries</u>				
100 Personnel Services – Salaries				6,395.00
Total Personnel Services – Salaries				\$6,395.00
200 <u>Personnel Services – Employee Benefits</u>				
220 Social Security Contributions				489.00
Total Personnel Services – Employee Benefits				\$489.00
500 <u>Other Purchased Services</u>				
591 Services Purchased Locally				17,100.82
Total Other Purchased Services				\$17,100.82
Total 2590 Other Support Services – Business				\$23,984.82

LEA : 124158503 Unionville-Chadds Ford SD

Printed 10/30/2018 11:19:17 AM

General Fund (10)				
2600 Operation and Maintenance of Plant Services	<u>Elementary</u>	<u>Secondary</u>	<u>Federal</u>	<u>Total</u>
100 <u>Personnel Services – Salaries</u>				
100 Personnel Services – Salaries				2,480,474.81
Total Personnel Services – Salaries				\$2,480,474.81
200 <u>Personnel Services – Employee Benefits</u>				
220 Social Security Contributions				184,698.70
230 PSERS Retirement Contributions				810,932.75
250 Unemployment Compensation				1,857.48
260 Workers' Compensation				11,911.83
270 Group Insurance – Self-Insurance				674,434.00
Total Personnel Services – Employee Benefits				\$1,683,834.76
300 <u>Purchased Professional and Technical Services</u>				
329 Professional Educational Services – Other				76,753.65
330 Other Professional Services				37,446.83
340 Technical Services				16,981.00
350 Security / Safety Services				2,735.00
Total Purchased Professional and Technical Services				\$133,916.48
400 <u>Purchased Property Services</u>				
410 Cleaning Services				31,748.36
420 Utility Services				120,521.37
430 Repairs and Maintenance Services				219,354.82
Total Purchased Property Services				\$371,624.55
500 <u>Other Purchased Services</u>				
521 Fire Insurance				117,972.00
523 General Property and Liability Insurance				113,276.00
529 Other Insurance				126,445.00
530 Communications				5,562.90
580 Travel				3,905.17
Total Other Purchased Services				\$367,161.07
600 <u>Supplies</u>				
610 General Supplies	176,789.51	176,789.52		353,579.03
620 Energy				1,074,355.97
630 Food				533.28
Total Supplies	\$176,789.51	\$176,789.52		\$1,428,468.28
700 <u>Property</u>				
752 Capital Equipment – Original and Additional				3,421.00
762 Capitalized Equipment - Replacement				32,007.22
Total Property				\$35,428.22
Total 2600 Operation and Maintenance of Plant Services	\$176,789.51	\$176,789.52		\$6,500,908.17

LEA : 124158503 Unionville-Chadds Ford SD

Printed 10/30/2018 11:19:17 AM

General Fund (10)				
2610 Supervision of Operation and Maintenance of Plant Services	<u>Elementary</u>	<u>Secondary</u>	<u>Federal</u>	<u>Total</u>
100 <u>Personnel Services – Salaries</u>				
100 Personnel Services – Salaries				124,970.00
Total Personnel Services – Salaries				\$124,970.00
200 <u>Personnel Services – Employee Benefits</u>				
220 Social Security Contributions				9,305.39
230 PSERS Retirement Contributions				40,855.99
250 Unemployment Compensation				93.58
260 Workers' Compensation				600.14
270 Group Insurance – Self-Insurance				33,978.98
Total Personnel Services – Employee Benefits				\$84,834.08
300 <u>Purchased Professional and Technical Services</u>				
330 Other Professional Services				37,446.83
Total Purchased Professional and Technical Services				\$37,446.83
500 <u>Other Purchased Services</u>				
530 Communications				5,562.90
580 Travel				3,905.17
Total Other Purchased Services				\$9,468.07
600 <u>Supplies</u>				
630 Food				533.28
Total Supplies				\$533.28
Total 2610 Supervision of Operation and Maintenance of Plant Services				\$257,252.26

LEA : 124158503 Unionville-Chadds Ford SD

Printed 10/30/2018 11:19:17 AM

General Fund (10)				
2611 Supervision of Operation and Maintenance of Plant Services – Head of Component	<u>Elementary</u>	<u>Secondary</u>	<u>Federal</u>	<u>Total</u>
100 <u>Personnel Services – Salaries</u>				
100 Personnel Services – Salaries				124,970.00
Total Personnel Services – Salaries				\$124,970.00
200 <u>Personnel Services – Employee Benefits</u>				
220 Social Security Contributions				9,305.39
230 PSERS Retirement Contributions				40,855.99
250 Unemployment Compensation				93.58
260 Workers' Compensation				600.14
270 Group Insurance – Self-Insurance				33,978.98
Total Personnel Services – Employee Benefits				\$84,834.08
300 <u>Purchased Professional and Technical Services</u>				
330 Other Professional Services				37,446.83
Total Purchased Professional and Technical Services				\$37,446.83
500 <u>Other Purchased Services</u>				
530 Communications				5,562.90
580 Travel				3,905.17
Total Other Purchased Services				\$9,468.07
600 <u>Supplies</u>				
630 Food				533.28
Total Supplies				\$533.28
Total 2611 Supervision of Operation and Maintenance of Plant Services – Head of Component				\$257,252.26

LEA : 124158503 Unionville-Chadds Ford SD

Printed 10/30/2018 11:19:17 AM

General Fund (10)				
2620 Operation of Buildings Services	<u>Elementary</u>	<u>Secondary</u>	<u>Federal</u>	<u>Total</u>
100 <u>Personnel Services – Salaries</u>				
100 Personnel Services – Salaries				2,047,074.95
Total Personnel Services – Salaries				\$2,047,074.95
200 <u>Personnel Services – Employee Benefits</u>				
220 Social Security Contributions				152,427.30
230 PSERS Retirement Contributions				669,242.89
250 Unemployment Compensation				1,532.93
260 Workers' Compensation				9,830.54
270 Group Insurance – Self-Insurance				556,593.82
Total Personnel Services – Employee Benefits				\$1,389,627.48
300 <u>Purchased Professional and Technical Services</u>				
329 Professional Educational Services – Other				40,676.16
340 Technical Services				16,981.00
Total Purchased Professional and Technical Services				\$57,657.16
400 <u>Purchased Property Services</u>				
410 Cleaning Services				31,748.36
420 Utility Services				120,521.37
430 Repairs and Maintenance Services				219,354.82
Total Purchased Property Services				\$371,624.55
500 <u>Other Purchased Services</u>				
521 Fire Insurance				117,972.00
523 General Property and Liability Insurance				113,276.00
529 Other Insurance				126,445.00
Total Other Purchased Services				\$357,693.00
600 <u>Supplies</u>				
610 General Supplies	141,464.59	141,464.60		282,929.19
620 Energy				1,074,355.97
Total Supplies	\$141,464.59	\$141,464.60		\$1,357,285.16
700 <u>Property</u>				
752 Capital Equipment – Original and Additional				3,421.00
762 Capitalized Equipment - Replacement				32,007.22
Total Property				\$35,428.22
Total 2620 Operation of Buildings Services	\$141,464.59	\$141,464.60		\$5,616,390.52

LEA : 124158503 Unionville-Chadds Ford SD

Printed 10/30/2018 11:19:17 AM

General Fund (10)				
2630 Care and Upkeep of Grounds Services	<u>Elementary</u>	<u>Secondary</u>	<u>Federal</u>	<u>Total</u>
100 <u>Personnel Services – Salaries</u>				
100 Personnel Services – Salaries				308,429.86
Total Personnel Services – Salaries				\$308,429.86
200 <u>Personnel Services – Employee Benefits</u>				
220 Social Security Contributions				22,966.01
230 PSERS Retirement Contributions				100,833.87
250 Unemployment Compensation				230.97
260 Workers' Compensation				1,481.15
270 Group Insurance – Self-Insurance				83,861.20
Total Personnel Services – Employee Benefits				\$209,373.20
600 <u>Supplies</u>				
610 General Supplies	35,324.92	35,324.92		70,649.84
Total Supplies	\$35,324.92	\$35,324.92		\$70,649.84
Total 2630 Care and Upkeep of Grounds Services	\$35,324.92	\$35,324.92		\$588,452.90

LEA : 124158503 Unionville-Chadds Ford SD

Printed 10/30/2018 11:19:17 AM

General Fund (10)

2660 Safety and Security Services

Elementary

Secondary

Federal

Total

300 Purchased Professional and Technical Services

329 Professional Educational Services – Other

36,077.49

350 Security / Safety Services

2,735.00

Total Purchased Professional and Technical Services				\$38,812.49
Total 2660 Safety and Security Services				\$38,812.49

LEA : 124158503 Unionville-Chadds Ford SD

Printed 10/30/2018 11:19:17 AM

General Fund (10)				
2700 Student Transportation Services	<u>Elementary</u>	<u>Secondary</u>	<u>Federal</u>	<u>Total</u>
100 <u>Personnel Services – Salaries</u>				
100 Personnel Services – Salaries				1,774,260.91
Total Personnel Services – Salaries				\$1,774,260.91
200 <u>Personnel Services – Employee Benefits</u>				
220 Social Security Contributions				129,473.55
230 PSERS Retirement Contributions				568,527.58
250 Unemployment Compensation				1,547.90
260 Workers' Compensation				8,428.02
270 Group Insurance – Self-Insurance				786,995.58
Total Personnel Services – Employee Benefits				\$1,494,972.63
300 <u>Purchased Professional and Technical Services</u>				
329 Professional Educational Services – Other				232.16
330 Other Professional Services				15,040.00
340 Technical Services				1,130.98
Total Purchased Professional and Technical Services				\$16,403.14
400 <u>Purchased Property Services</u>				
430 Repairs and Maintenance Services				8,714.92
440 Rentals				6,073.91
Total Purchased Property Services				\$14,788.83
500 <u>Other Purchased Services</u>				
516 Student Transportation Services From the IU				3,687.24
522 Automotive Liability Insurance				113,788.00
530 Communications				5,279.00
580 Travel				2,016.42
Total Other Purchased Services				\$124,770.66
600 <u>Supplies</u>				
610 General Supplies				121,291.77
620 Energy				232,069.49
630 Food				800.00
Total Supplies				\$354,161.26
700 <u>Property</u>				
762 Capitalized Equipment - Replacement				333,292.10
Total Property				\$333,292.10
Total 2700 Student Transportation Services				\$4,112,649.53

LEA : 124158503 Unionville-Chadds Ford SD

Printed 10/30/2018 11:19:17 AM

General Fund (10)				
2710 Supervision of Student Transportation Services	<u>Elementary</u>	<u>Secondary</u>	<u>Federal</u>	<u>Total</u>
100 <u>Personnel Services – Salaries</u>				
100 Personnel Services – Salaries				124,198.26
Total Personnel Services – Salaries				\$124,198.26
200 <u>Personnel Services – Employee Benefits</u>				
220 Social Security Contributions				9,063.16
230 PSERS Retirement Contributions				39,796.93
250 Unemployment Compensation				108.36
260 Workers' Compensation				589.96
270 Group Insurance – Self-Insurance				55,089.69
Total Personnel Services – Employee Benefits				\$104,648.10
300 <u>Purchased Professional and Technical Services</u>				
329 Professional Educational Services – Other				232.16
Total Purchased Professional and Technical Services				\$232.16
500 <u>Other Purchased Services</u>				
522 Automotive Liability Insurance				113,788.00
530 Communications				5,279.00
580 Travel				2,016.42
Total Other Purchased Services				\$121,083.42
600 <u>Supplies</u>				
630 Food				800.00
Total Supplies				\$800.00
Total 2710 Supervision of Student Transportation Services				\$350,961.94

LEA : 124158503 Unionville-Chadds Ford SD

Printed 10/30/2018 11:19:17 AM

General Fund (10)				
2711 Supervision of Student Transportation Services – Head of Component	<u>Elementary</u>	<u>Secondary</u>	<u>Federal</u>	<u>Total</u>
100 <u>Personnel Services – Salaries</u>				
100 Personnel Services – Salaries				124,198.26
Total Personnel Services – Salaries				\$124,198.26
200 <u>Personnel Services – Employee Benefits</u>				
220 Social Security Contributions				9,063.16
230 PSERS Retirement Contributions				39,796.93
250 Unemployment Compensation				108.36
260 Workers' Compensation				589.96
270 Group Insurance – Self-Insurance				55,089.69
Total Personnel Services – Employee Benefits				\$104,648.10
300 <u>Purchased Professional and Technical Services</u>				
329 Professional Educational Services – Other				232.16
Total Purchased Professional and Technical Services				\$232.16
500 <u>Other Purchased Services</u>				
522 Automotive Liability Insurance				113,788.00
530 Communications				5,279.00
580 Travel				2,016.42
Total Other Purchased Services				\$121,083.42
600 <u>Supplies</u>				
630 Food				800.00
Total Supplies				\$800.00
Total 2711 Supervision of Student Transportation Services – Head of Component				\$350,961.94

LEA : 124158503 Unionville-Chadds Ford SD

Printed 10/30/2018 11:19:17 AM

General Fund (10)				
2720 Vehicle Operation Services	<u>Elementary</u>	<u>Secondary</u>	<u>Federal</u>	<u>Total</u>
100 <u>Personnel Services – Salaries</u>				
100 Personnel Services – Salaries				1,011,328.72
Total Personnel Services – Salaries				\$1,011,328.72
200 <u>Personnel Services – Employee Benefits</u>				
220 Social Security Contributions				73,799.92
230 PSERS Retirement Contributions				324,060.72
250 Unemployment Compensation				882.30
260 Workers' Compensation				4,803.97
270 Group Insurance – Self-Insurance				448,587.48
Total Personnel Services – Employee Benefits				\$852,134.39
300 <u>Purchased Professional and Technical Services</u>				
330 Other Professional Services				15,040.00
340 Technical Services				1,130.98
Total Purchased Professional and Technical Services				\$16,170.98
500 <u>Other Purchased Services</u>				
516 Student Transportation Services From the IU				3,687.24
Total Other Purchased Services				\$3,687.24
Total 2720 Vehicle Operation Services				\$1,883,321.33

LEA : 124158503 Unionville-Chadds Ford SD

Printed 10/30/2018 11:19:17 AM

General Fund (10)

2730 Monitoring Services

	<u>Elementary</u>	<u>Secondary</u>	<u>Federal</u>	<u>Total</u>
100 <u>Personnel Services – Salaries</u>				
100 Personnel Services – Salaries				35,485.22
Total Personnel Services – Salaries				\$35,485.22
200 <u>Personnel Services – Employee Benefits</u>				
220 Social Security Contributions				2,589.47
230 PSERS Retirement Contributions				11,370.55
250 Unemployment Compensation				30.96
260 Workers' Compensation				168.56
270 Group Insurance – Self-Insurance				15,739.91
Total Personnel Services – Employee Benefits				\$29,899.45
Total 2730 Monitoring Services				\$65,384.67

LEA : 124158503 Unionville-Chadds Ford SD

Printed 10/30/2018 11:19:17 AM

General Fund (10)				
2740 Vehicle Servicing and Maintenance Services	<u>Elementary</u>	<u>Secondary</u>	<u>Federal</u>	<u>Total</u>
100 <u>Personnel Services – Salaries</u>				
100 Personnel Services – Salaries				141,940.87
Total Personnel Services – Salaries				\$141,940.87
200 <u>Personnel Services – Employee Benefits</u>				
220 Social Security Contributions				10,357.88
230 PSERS Retirement Contributions				45,482.21
250 Unemployment Compensation				123.83
260 Workers' Compensation				674.24
270 Group Insurance – Self-Insurance				62,959.65
Total Personnel Services – Employee Benefits				\$119,597.81
400 <u>Purchased Property Services</u>				
430 Repairs and Maintenance Services				8,714.92
440 Rentals				6,073.91
Total Purchased Property Services				\$14,788.83
600 <u>Supplies</u>				
610 General Supplies				121,291.77
620 Energy				232,069.49
Total Supplies				\$353,361.26
700 <u>Property</u>				
762 Capitalized Equipment - Replacement				333,292.10
Total Property				\$333,292.10
Total 2740 Vehicle Servicing and Maintenance Services				\$962,980.87

LEA : 124158503 Unionville-Chadds Ford SD

Printed 10/30/2018 11:19:17 AM

General Fund (10)

2750 Nonpublic Transportation		<u>Elementary</u>	<u>Secondary</u>	<u>Federal</u>	<u>Total</u>
100	<u>Personnel Services – Salaries</u>				
100	Personnel Services – Salaries				461,307.84
Total Personnel Services – Salaries					\$461,307.84
200	<u>Personnel Services – Employee Benefits</u>				
220	Social Security Contributions				33,663.12
230	PSERS Retirement Contributions				147,817.17
250	Unemployment Compensation				402.45
260	Workers' Compensation				2,191.29
270	Group Insurance – Self-Insurance				204,618.85
Total Personnel Services – Employee Benefits					\$388,692.88
Total 2750 Nonpublic Transportation					\$850,000.72

LEA : 124158503 Unionville-Chadds Ford SD

Printed 10/30/2018 11:19:17 AM

General Fund (10)				
2800 Support Services – Central	<u>Elementary</u>	<u>Secondary</u>	<u>Federal</u>	<u>Total</u>
100 <u>Personnel Services – Salaries</u>				
100 Personnel Services – Salaries				606,221.36
Total Personnel Services – Salaries				\$606,221.36
200 <u>Personnel Services – Employee Benefits</u>				
220 Social Security Contributions				44,106.38
230 PSERS Retirement Contributions				193,674.23
240 Tuition Reimbursement				59,995.80
250 Unemployment Compensation				343.98
260 Workers' Compensation				1,724.31
270 Group Insurance – Self-Insurance				119,972.97
Total Personnel Services – Employee Benefits				\$419,817.67
300 <u>Purchased Professional and Technical Services</u>				
330 Other Professional Services				24,535.00
Total Purchased Professional and Technical Services				\$24,535.00
500 <u>Other Purchased Services</u>				
550 Printing and Binding				19,041.94
580 Travel				146.28
Total Other Purchased Services				\$19,188.22
600 <u>Supplies</u>				
610 General Supplies				141.21
630 Food				644.50
Total Supplies				\$785.71
Total 2800 Support Services – Central				\$1,070,547.96

LEA : 124158503 Unionville-Chadds Ford SD

Printed 10/30/2018 11:19:17 AM

General Fund (10)

2810 Planning, Research, Development and Evaluation Services

Elementary Secondary Federal Total

100 <u>Personnel Services – Salaries</u>				
100 Personnel Services – Salaries				524,381.36
Total Personnel Services – Salaries				\$524,381.36
200 <u>Personnel Services – Employee Benefits</u>				
220 Social Security Contributions				37,846.38
230 PSERS Retirement Contributions				167,019.23
250 Unemployment Compensation				343.98
260 Workers' Compensation				1,724.31
270 Group Insurance – Self-Insurance				119,972.97
Total Personnel Services – Employee Benefits				\$326,906.87
Total 2810 Planning, Research, Development and Evaluation Services				\$851,288.23

LEA : 124158503 Unionville-Chadds Ford SD

Printed 10/30/2018 11:19:17 AM

General Fund (10)					
2820 Information Services		<u>Elementary</u>	<u>Secondary</u>	<u>Federal</u>	<u>Total</u>
100	<u>Personnel Services – Salaries</u>				
100	Personnel Services – Salaries				81,840.00
Total Personnel Services – Salaries					\$81,840.00
200	<u>Personnel Services – Employee Benefits</u>				
220	Social Security Contributions				6,260.00
230	PSERS Retirement Contributions				26,655.00
Total Personnel Services – Employee Benefits					\$32,915.00
300	<u>Purchased Professional and Technical Services</u>				
330	Other Professional Services				24,535.00
Total Purchased Professional and Technical Services					\$24,535.00
500	<u>Other Purchased Services</u>				
550	Printing and Binding				19,041.94
580	Travel				146.28
Total Other Purchased Services					\$19,188.22
600	<u>Supplies</u>				
610	General Supplies				141.21
630	Food				644.50
Total Supplies					\$785.71
Total 2820 Information Services					\$159,263.93

LEA : 124158503 Unionville-Chadds Ford SD

Printed 10/30/2018 11:19:17 AM

General Fund (10)				
2823 Public Information Services	<u>Elementary</u>	<u>Secondary</u>	<u>Federal</u>	<u>Total</u>
100 <u>Personnel Services – Salaries</u>				
100 Personnel Services – Salaries				81,840.00
Total Personnel Services – Salaries				\$81,840.00
200 <u>Personnel Services – Employee Benefits</u>				
220 Social Security Contributions				6,260.00
230 PSERS Retirement Contributions				26,655.00
Total Personnel Services – Employee Benefits				\$32,915.00
300 <u>Purchased Professional and Technical Services</u>				
330 Other Professional Services				24,535.00
Total Purchased Professional and Technical Services				\$24,535.00
500 <u>Other Purchased Services</u>				
550 Printing and Binding				19,041.94
580 Travel				146.28
Total Other Purchased Services				\$19,188.22
600 <u>Supplies</u>				
610 General Supplies				141.21
630 Food				644.50
Total Supplies				\$785.71
Total 2823 Public Information Services				\$159,263.93

LEA : 124158503 Unionville-Chadds Ford SD

Printed 10/30/2018 11:19:17 AM

General Fund (10)				
2830 Staff Services	<u>Elementary</u>	<u>Secondary</u>	<u>Federal</u>	<u>Total</u>
200 <u>Personnel Services – Employee Benefits</u>				
240 Tuition Reimbursement				59,995.80
Total Personnel Services – Employee Benefits				\$59,995.80
Total 2830 Staff Services				\$59,995.80

LEA : 124158503 Unionville-Chadds Ford SD

Printed 10/30/2018 11:19:17 AM

General Fund (10)

2834 Staff Development Services – Non-Instructional, Certified Staff Only	<u>Elementary</u>	<u>Secondary</u>	<u>Federal</u>	<u>Total</u>
200 <u>Personnel Services – Employee Benefits</u>				
240 Tuition Reimbursement				57,495.80
Total Personnel Services – Employee Benefits				\$57,495.80
Total 2834 Staff Development Services – Non-Instructional, Certified Staff Only				\$57,495.80

LEA : 124158503 Unionville-Chadds Ford SD

Printed 10/30/2018 11:19:17 AM

General Fund (10)

2836 Staff Development Services – Non-Instructional, Non-Certified Staff Only	<u>Elementary</u>	<u>Secondary</u>	<u>Federal</u>	<u>Total</u>
200 <u>Personnel Services – Employee Benefits</u>				
240 Tuition Reimbursement				2,500.00
Total Personnel Services – Employee Benefits				\$2,500.00
Total 2836 Staff Development Services – Non-Instructional, Non-Certified Staff Only				\$2,500.00

LEA : 124158503 Unionville-Chadds Ford SD

Printed 10/30/2018 11:19:17 AM

General Fund (10)

2900 Other Support Services	<u>Elementary</u>	<u>Secondary</u>	<u>Federal</u>	<u>Total</u>
500 <u>Other Purchased Services</u>				
595 IU Payments By Withholding				42,096.90
Total Other Purchased Services				\$42,096.90
Total 2900 Other Support Services				\$42,096.90

LEA : 124158503 Unionville-Chadds Ford SD

Printed 10/30/2018 11:19:17 AM

General Fund (10)

2910 Support Services Not Listed Elsewhere In the 2000 Series

Elementary Secondary Federal Total

500 Other Purchased Services

595 IU Payments By Withholding 42,096.90

Total Other Purchased Services \$42,096.90

Total 2910 Support Services Not Listed Elsewhere In the 2000 Series \$42,096.90

LEA : 124158503 Unionville-Chadds Ford SD

Printed 10/30/2018 11:19:21 AM

General Fund (10)	
3000 Operation of Non-Instructional Services	<u>Total</u>
100 <u>Personnel Services – Salaries</u>	
100 Personnel Services – Salaries	998,393.78
Total Personnel Services – Salaries	\$998,393.78
200 <u>Personnel Services – Employee Benefits</u>	
220 Social Security Contributions	72,846.65
230 PSERS Retirement Contributions	319,874.85
250 Unemployment Compensation	103.19
260 Workers' Compensation	4,170.00
270 Group Insurance – Self-Insurance	31,312.26
Total Personnel Services – Employee Benefits	\$428,306.95
300 <u>Purchased Professional and Technical Services</u>	
329 Professional Educational Services – Other	12,910.11
330 Other Professional Services	26,618.48
Total Purchased Professional and Technical Services	\$39,528.59
400 <u>Purchased Property Services</u>	
430 Repairs and Maintenance Services	18,129.63
Total Purchased Property Services	\$18,129.63
500 <u>Other Purchased Services</u>	
520 Insurance – General	11,250.00
580 Travel	20,893.31
Total Other Purchased Services	\$32,143.31
600 <u>Supplies</u>	
610 General Supplies	79,836.54
Total Supplies	\$79,836.54
800 <u>Other Objects</u>	
810 Dues and Fees	9,691.00
Total Other Objects	\$9,691.00
Total 3000 Operation of Non-Instructional Services	\$1,606,029.80

LEA : 124158503 Unionville-Chadds Ford SD

Printed 10/30/2018 11:19:21 AM

General Fund (10)				
3200 Student Activities	<u>Elementary</u>	<u>Secondary</u>	<u>Federal</u>	<u>Total</u>
100 <u>Personnel Services – Salaries</u>				
100 Personnel Services – Salaries				983,304.12
Total Personnel Services – Salaries				\$983,304.12
200 <u>Personnel Services – Employee Benefits</u>				
220 Social Security Contributions				71,708.43
230 PSERS Retirement Contributions				314,876.81
250 Unemployment Compensation				103.19
260 Workers' Compensation				4,099.64
270 Group Insurance – Self-Insurance				31,312.26
Total Personnel Services – Employee Benefits				\$422,100.33
300 <u>Purchased Professional and Technical Services</u>				
329 Professional Educational Services – Other				12,910.11
330 Other Professional Services				26,618.48
Total Purchased Professional and Technical Services				\$39,528.59
400 <u>Purchased Property Services</u>				
430 Repairs and Maintenance Services				18,129.63
Total Purchased Property Services				\$18,129.63
500 <u>Other Purchased Services</u>				
520 Insurance – General				11,250.00
580 Travel				20,893.31
Total Other Purchased Services				\$32,143.31
600 <u>Supplies</u>				
610 General Supplies				79,836.54
Total Supplies				\$79,836.54
800 <u>Other Objects</u>				
810 Dues and Fees				9,691.00
Total Other Objects				\$9,691.00
Total 3200 Student Activities				\$1,584,733.52

LEA : 124158503 Unionville-Chadds Ford SD

Printed 10/30/2018 11:19:21 AM

General Fund (10)

3300 Community Services

Elementary Secondary Federal Total

100 <u>Personnel Services – Salaries</u>				
100 Personnel Services – Salaries				15,089.66
Total Personnel Services – Salaries				\$15,089.66
200 <u>Personnel Services – Employee Benefits</u>				
220 Social Security Contributions				1,138.22
230 PSERS Retirement Contributions				4,998.04
260 Workers’ Compensation				70.36
Total Personnel Services – Employee Benefits				\$6,206.62
Total 3300 Community Services				\$21,296.28

LEA : 124158503 Unionville-Chadds Ford SD

Printed 10/30/2018 11:19:24 AM

General Fund (10)

5000 Other Expenditures and Financing Uses

Total

800 <u>Other Objects</u>	
830 Interest	3,341,197.50
Total Other Objects	\$3,341,197.50
900 <u>Other Uses of Funds</u>	
910 Redemption of Principal	4,385,000.00
932 Capital Reserve Fund Transfers Applicable To Fund 32	2,542,715.54
Total Other Uses of Funds	\$6,927,715.54
Total 5000 Other Expenditures and Financing Uses	\$10,268,913.04

LEA : 124158503 Unionville-Chadds Ford SD

Printed 10/30/2018 11:19:24 AM

General Fund (10)

5100 Debt Service / Other Expenditures and Financing Uses	<u>Elementary</u>	<u>Secondary</u>	<u>Federal</u>	<u>Total</u>
800 <u>Other Objects</u>				
830 Interest				3,341,197.50
Total Other Objects				\$3,341,197.50
900 <u>Other Uses of Funds</u>				
910 Redemption of Principal				4,385,000.00
Total Other Uses of Funds				\$4,385,000.00
Total 5100 Debt Service / Other Expenditures and Financing Uses				\$7,726,197.50

LEA : 124158503 Unionville-Chadds Ford SD

Printed 10/30/2018 11:19:24 AM

General Fund (10)

5110 Debt Service	<u>Elementary</u>	<u>Secondary</u>	<u>Federal</u>	<u>Total</u>
800 <u>Other Objects</u>				
830 Interest				3,341,197.50
Total Other Objects				\$3,341,197.50
900 <u>Other Uses of Funds</u>				
910 Redemption of Principal				4,385,000.00
Total Other Uses of Funds				\$4,385,000.00
Total 5110 Debt Service				\$7,726,197.50

LEA : 124158503 Unionville-Chadds Ford SD

Printed 10/30/2018 11:19:24 AM

General Fund (10)

5200 Interfund Transfers – Out	<u>Elementary</u>	<u>Secondary</u>	<u>Federal</u>	<u>Total</u>
900 <u>Other Uses of Funds</u>				
932 Capital Reserve Fund Transfers Applicable To Fund 32				2,542,715.54
Total Other Uses of Funds				\$2,542,715.54
Total 5200 Interfund Transfers – Out				\$2,542,715.54

LEA : 124158503 Unionville-Chadds Ford SD

Printed 10/30/2018 11:19:24 AM

General Fund (10)

5230 Capital Projects Fund Transfers	<u>Elementary</u>	<u>Secondary</u>	<u>Federal</u>	<u>Total</u>
900 <u>Other Uses of Funds</u>				
932 Capital Reserve Fund Transfers Applicable To Fund 32				2,542,715.54
Total Other Uses of Funds				\$2,542,715.54
Total 5230 Capital Projects Fund Transfers				\$2,542,715.54

LEA : 124158503 Unionville-Chadds Ford SD

Printed 10/30/2018 11:19:22 AM

Capital Reserve Fund - § 1431 (32)

4000 Facilities Acquisition, Construction and Improvement Services

Total

300 Purchased Professional and Technical Services

330 Other Professional Services	223,097.19
---------------------------------	------------

Total Purchased Professional and Technical Services	\$223,097.19
--	---------------------

700 Property

762 Capitalized Equipment - Replacement	2,940,056.79
---	--------------

Total Property	\$2,940,056.79
-----------------------	-----------------------

Total 4000 Facilities Acquisition, Construction and Improvement Services	\$3,163,153.98
---	-----------------------

LEA : 124158503 Unionville-Chadds Ford SD

Printed 10/30/2018 11:19:22 AM

Capital Reserve Fund - § 1431 (32)

4600 Existing Building Improvement Services

Elementary Secondary Federal Total

300 Purchased Professional and Technical Services

330 Other Professional Services 223,097.19

Total Purchased Professional and Technical Services \$223,097.19

700 Property

762 Capitalized Equipment - Replacement 2,940,056.79

Total Property \$2,940,056.79

Total 4600 Existing Building Improvement Services \$3,163,153.98

LEA : 124158503 Unionville-Chadds Ford SD

Printed 10/30/2018 11:19:25 AM

Debt Service Fund (40)

5000 Other Expenditures and Financing Uses

Total

900 Other Uses of Funds

930 Fund Transfers

65.54

Total Other Uses of Funds

\$65.54

Total 5000 Other Expenditures and Financing Uses

\$65.54

LEA : 124158503 Unionville-Chadds Ford SD

Printed 10/30/2018 11:19:25 AM

Debt Service Fund (40)

5200 Interfund Transfers – Out	<u>Elementary</u>	<u>Secondary</u>	<u>Federal</u>	<u>Total</u>
900 <u>Other Uses of Funds</u>				
930 Fund Transfers				65.54
Total Other Uses of Funds				\$65.54
Total 5200 Interfund Transfers – Out				\$65.54

LEA : 124158503 Unionville-Chadds Ford SD

Printed 10/30/2018 11:19:25 AM

Debt Service Fund (40)

5210 General Fund Transfers

<u>Elementary</u>	<u>Secondary</u>	<u>Federal</u>	<u>Total</u>
-------------------	------------------	----------------	--------------

900 Other Uses of Funds

930 Fund Transfers			65.54
--------------------	--	--	-------

Total Other Uses of Funds			\$65.54
----------------------------------	--	--	----------------

Total 5210 General Fund Transfers			\$65.54
--	--	--	----------------

LEA : 124158503 Unionville-Chadds Ford SD

Printed 10/30/2018 11:19:32 AM

	<u>General Fund(10)</u>	<u>Public Purpose Trust(27)</u>	<u>Other Compt Approved</u> <u>(28)</u>	<u>Athletic / Activity(29)</u>	<u>Capital Reserve (690.</u> <u>1850)(31)</u>
1000 <u>Instruction</u>					
1100 Regular Programs - Elementary / Secondary	33,330,113.77				
1200 Special Programs - Elementary / Secondary	13,036,627.11				
1300 Vocational Education	822,591.82				
1400 Other Instructional Programs - Elementary / Secondary	334,569.65				
Total Instruction	\$47,523,902.35				
2000 <u>Support Services</u>					
2100 Support Services - Students	3,786,658.52				
2200 Support Services - Instructional Staff	4,183,244.91				
2300 Support Services - Administration	4,136,904.04				
2400 Support Services - Pupil Health	690,378.22				
2500 Support Services - Business	1,047,414.63				
2600 Operation and Maintenance of Plant Services	6,500,908.17				
2700 Student Transportation Services	4,112,649.53				
2800 Support Services - Central	1,070,547.96				
2900 Other Support Services	42,096.90				
Total Support Services	\$25,570,802.88				
3000 <u>Operation of Non-Instructional Services</u>					
3200 Student Activities	1,584,733.52				
3300 Community Services	21,296.28				
Total Operation of Non-Instructional Services	\$1,606,029.80				
4000 <u>Facilities Acquisition, Construction and Improvement Services</u>					
4600 Existing Building Improvement Services					
Total Facilities Acquisition, Construction and Improvement Services					
5000 <u>Other Expenditures and Financing Uses</u>					
5100 Debt Service / Other Expenditures and Financing Uses	7,726,197.50				
5200 Interfund Transfers - Out	2,542,715.54				
Total Other Expenditures and Financing Uses	\$10,268,913.04				
TOTAL ACTUAL EXPENDITURES & OTHER FINANCING USES	\$84,969,648.07				

LEA : 124158503 Unionville-Chadds Ford SD

Printed 10/30/2018 11:19:32 AM

	<u>Capital Reserve (1431)(32)</u>	<u>Other Capital Projects Fund(39)</u>	<u>Debt Service(40)</u>	<u>Permanent(90)</u>	<u>Total</u>
1000 <u>Instruction</u>					
1100 Regular Programs - Elementary / Secondary					33,330,113.77
1200 Special Programs - Elementary / Secondary					13,036,627.11
1300 Vocational Education					822,591.82
1400 Other Instructional Programs - Elementary / Secondary					334,569.65
Total Instruction					\$47,523,902.35
2000 <u>Support Services</u>					
2100 Support Services - Students					3,786,658.52
2200 Support Services - Instructional Staff					4,183,244.91
2300 Support Services - Administration					4,136,904.04
2400 Support Services - Pupil Health					690,378.22
2500 Support Services - Business					1,047,414.63
2600 Operation and Maintenance of Plant Services					6,500,908.17
2700 Student Transportation Services					4,112,649.53
2800 Support Services - Central					1,070,547.96
2900 Other Support Services					42,096.90
Total Support Services					\$25,570,802.88
3000 <u>Operation of Non-Instructional Services</u>					
3200 Student Activities					1,584,733.52
3300 Community Services					21,296.28
Total Operation of Non-Instructional Services					\$1,606,029.80
4000 <u>Facilities Acquisition, Construction and Improvement Services</u>					
4600 Existing Building Improvement Services	3,163,153.98				3,163,153.98
Total Facilities Acquisition, Construction and Improvement Services	\$3,163,153.98				\$3,163,153.98
5000 <u>Other Expenditures and Financing Uses</u>					
5100 Debt Service / Other Expenditures and Financing Uses					7,726,197.50
5200 Interfund Transfers - Out			65.54		2,542,781.08
Total Other Expenditures and Financing Uses			\$65.54		\$10,268,978.58
TOTAL ACTUAL EXPENDITURES & OTHER FINANCING USES	\$3,163,153.98		\$65.54		\$88,132,867.59

LEA : 124158503 Unionville-Chadds Ford SD

Printed 10/30/2018 11:19:36 AM

PSERS Salary Data (Salary Data should relate to the General Fund only)

Amount	Description	Amount
	Total Salary Base for salaries subject to PSERS withholding	37,876,137.55
	Total Federally Funded salaries subject to PSERS withholding	468,662.31

Title I Expenditure Data

Amount	Description	Amount
	Expenditures Funded with Current Title I Funds	102,537.00
	Expenditures Funded with Carry over Title I Funds	
Total	Title I Expenditure Data	\$102,537.00

Benefits for Staff Relative to Collective Bargaining Agreements				
	OBJECT	COVERED	NOT COVERED	TOTAL
10 General Fund				
	211 Medical Insurance			
	212 Dental Insurance			
	215 Eye Care Insurance			
	216 Prescription Insurance			
	271 Self-Insurance Medical Benefits	2,798,835.14	2,481,985.88	5,280,821.02
	272 Self-Insurance Dental Benefits	278,002.64	218,430.64	496,433.28
	275 Self-Insurance Eye Care Benefits	52,592.88	41,322.97	93,915.85
	276 Self-Insurance Prescription Benefits	836,015.69	741,372.40	1,577,388.09
	FUND TOTAL	\$3,965,446.35	\$3,483,111.89	\$7,448,558.24
50 Enterprise Fund	No Self Insurance data to report			
	211 Medical Insurance			
	212 Dental Insurance			
	215 Eye Care Insurance			
	216 Prescription Insurance			
	271 Self-Insurance Medical Benefits			
	272 Self-Insurance Dental Benefits			
	275 Self-Insurance Eye Care Benefits			
	276 Self-Insurance Prescription Benefits			
	FUND TOTAL			
60 Internal Service Fund	No Self Insurance data to report			
	211 Medical Insurance			
	212 Dental Insurance			
	215 Eye Care Insurance			
	216 Prescription Insurance			
	271 Self-Insurance Medical Benefits			
	272 Self-Insurance Dental Benefits			
	275 Self-Insurance Eye Care Benefits			
	276 Self-Insurance Prescription Benefits			
	FUND TOTAL			
Total of All Funds		\$3,965,446.35	\$3,483,111.89	\$7,448,558.24

LEA : 124158503 Unionville-Chadds Ford SD

Printed 10/30/2018 11:19:39 AM

Function	Special Education (Prior Year)	Nonspecial Education (Prior Year)	Total (Prior Year)	Special Education (Current Year)	Nonspecial Education (Current Year)	Total (Current Year)
2120 Guidance Services	846,912.11	1,572,836.61	2,419,748.72	888,955.13	1,650,916.48	2,539,871.61
2140 Psychological Services	687,186.58	36,170.40	723,356.98	716,781.38	37,728.13	754,509.51
2150 Speech Pathology and Audiology Services						
2160 Social Work Services						
2260 Instruction and Curriculum Development Services	211,924.24	847,698.60	1,059,622.84	129,718.03	518,873.15	648,591.18
2350 Legal and Accounting Services	107,977.46	80,918.95	188,896.41	42,667.39	56,231.12	98,898.51
2420 Medical Services						
2440 Nursing Services	162,079.79	486,236.80	648,316.59	172,595.24	517,782.98	690,378.22
2700 Student Transportation Services	414,725.93	3,573,023.40	3,987,749.33	427,715.55	3,684,933.98	4,112,649.53
Total	\$2,430,806.11	\$6,596,884.76	\$9,027,690.87	\$2,378,432.72	\$6,466,465.84	\$8,844,898.56

LEA : 124158503 Unionville-Chadds Ford SD

Printed 10/30/2018 11:19:40 AM

(PRINCIPAL AMOUNTS ONLY)								
<u>GOVERNMENTAL FUNDS/ ACTIVITIES</u>	Short-Term Borrowing	General Obligation Bonds/Notes	Authority Building Obligations	Other Long-Term Debt	Other Post- Employment Benefits (OPEB)	Compensated Absences	Net Pension Liability	Total
1. Debt at Beginning of Fiscal Year		80,590,000.00			2,917,272.00	3,623,193.00	138,359,432.00	225,489,897.00
2. Additional Debt Incurred During Year					414,110.00	160,092.00	6,249,568.00	6,823,770.00
3. Retirements and Repayments		4,385,000.00			122,811.00			4,507,811.00
4. Debt at End of Fiscal Year		76,205,000.00			3,208,571.00	3,783,285.00	144,609,000.00	227,805,856.00
5. Accreted Interest at End Of Fiscal Year								
6. Total Debt and Accreted Interest		76,205,000.00			3,208,571.00	3,783,285.00	144,609,000.00	227,805,856.00
7. Current Portion P&I - Due within 1 year		7,708,110.00				191,332.52		7,899,442.52
8. Interest Paid during current fiscal year		3,341,197.50						3,341,197.50

(PRINCIPAL AMOUNTS ONLY)								
<u>PROPRIETARY FUNDS</u>	Short-Term Borrowing	General Obligation Bonds/Notes	Authority Building Obligations	Other Long-Term Debt	Other Post- Employment Benefits (OPEB)	Compensated Absences	Net Pension Liability	Total
1. Debt at Beginning of Fiscal Year							1,836,568.00	1,836,568.00
2. Additional Debt Incurred During Year							57,810.00	57,810.00
3. Retirements and Repayments								
4. Debt at End of Fiscal Year							1,894,378.00	1,894,378.00
5. Accreted Interest at End Of Fiscal Year								
6. Total Debt and Accreted Interest							1,894,378.00	1,894,378.00
7. Current Portion P&I - Due within 1 year								
8. Interest Paid during current fiscal year								

LEA : 124158503 Unionville-Chadds Ford SD

Total Principal and Interest Payments Made by Your School - All Funds

Function	Fund		Principal (910)	Principal (920)	Interest (830)	Total (Principal +Interest)	Misc Other Uses (990)
5110	10	General Fund	4,385,000.00		3,341,197.50	7,726,197.50	
5110	20	Special Revenue Funds					
5110	30	Capital Projects Funds					
5110	40	Debt Service Fund					
5110	90	Permanent Fund					
5120	10	General Fund					
5120	20	Special Revenue Funds					
5120	30	Capital Projects Funds					
5120	40	Debt Service Fund					
Total Debt Payments - Governmental Funds			\$4,385,000.00		\$3,341,197.50	\$7,726,197.50	

Function	Fund		Principal (910)	Principal (920)	Interest (830)	Total (Principal +Interest)
5110	50	Enterprise Fund				
5110	60	Internal Service Fund				
5120	50	Enterprise Fund				
5120	60	Internal Service Fund				
Total Debt Payments - Proprietary Funds						

LEA : 124158503 Unionville-Chadds Ford SD

Printed 10/30/2018 11:19:40 AM

Debt Details
Governmental Funds/ Activities

Debt Category	Debt Issue Date (MM/YYYY)	Principal Amounts Only				Current Portion Due Within One Year (Principal and Interest)	Interest Paid During Fiscal Year
		Debt at Beginning of Fiscal Year	Additions	Reductions / Repayments	Debt at End of Fiscal Year		
General Obligation Bonds/Notes – CIB	09/2016	57,020,000.00		5,000.00	57,015,000.00	2,446,275.00	2,441,375.00
General Obligation Bonds/Notes – CIB	02/2015	14,530,000.00		2,755,000.00	11,775,000.00	3,265,037.50	510,237.50
General Obligation Bonds/Notes – CIB	11/2012	435,000.00		435,000.00			8,700.00
General Obligation Bonds/Notes – CIB	09/2010	1,835,000.00		1,005,000.00	830,000.00	222,547.50	45,160.00
General Obligation Bonds/Notes – CIB	08/2009	6,770,000.00		185,000.00	6,585,000.00	1,774,250.00	335,725.00
Compensated Absences		3,623,193.00	160,092.00		3,783,285.00	191,332.52	
Other Post-Employment Benefits (OPEB)		2,917,272.00	414,110.00	122,811.00	3,208,571.00		
Net Pension Liability		138,359,432.00	6,249,568.00		144,609,000.00		
Totals for Debt Entered:		\$225,489,897.00	\$6,823,770.00	\$4,507,811.00	\$227,805,856.00	\$7,899,442.52	\$3,341,197.50

Bond Details
Proprietary Funds

Debt Category	Debt Issue Date (MM/YYYY)	Principal Amounts Only				Current Portion Due Within One Year (Principal and Interest)	Interest Paid During Fiscal Year
		Debt at Beginning of Fiscal Year	Additions	Reductions / Repayments	Debt at End of Fiscal Year		
Net Pension Liability		1,836,568.00	57,810.00		1,894,378.00		
Totals for Debt Entered:		\$1,836,568.00	\$57,810.00		\$1,894,378.00		

LEA : 124158503 Unionville-Chadds Ford SD

Printed 10/30/2018 11:19:41 AM

General Fund (10)

Section 1: Tuition/Purchased Services as Reported within Expenditure Detail	Amount
Tuition Reported in General Fund Expenditures 1000-560	1,527,828.44
Purchased Services in General Fund Expenditures 1000-594 and 1000-597	
Section 1 Total	\$1,527,828.44

Section 2: Tuition Paid to Institution Types During Fiscal Year	Tuition Paid For Nonspecial Education	Tuition Paid For Special Education	Total
1 1306 Institutions			
2 Institutionalized Children's Programs			
3 Juveniles Incarcerated in Adult Facilities			
4 Residential Treatment Facilities			
5 Other Local Education Agencies	31,200.00	23,456.65	54,656.65
6 Brick and Mortar Charter Schools	78,330.79	28,014.79	106,345.58
7 Cyber Charter Schools	381,201.25	152,443.39	533,644.64
8 Career and Technology Centers	692,437.00		692,437.00
9 Approved Private Schools		79,073.83	79,073.83
10 PA Chartered Schools for the Deaf and Blind			
11 Private Residential Rehabilitative Institutions			
12 Juvenile Detention Centers	61,670.74		61,670.74
13 Special Program Jointures			
14 Other Tuition Not Included Elsewhere In This Section			
Section 2 Total	\$1,244,839.78	\$282,988.66	\$1,527,828.44

1 .	<u>Student Transportation Services for Educational Field Trips</u>	
2 .	<u>Student Transportation Services for Student Activities</u>	48,478.18
3 .	<u>Rental of Vehicles for Student Transportation Services</u>	
4 .	<u>Capital Reserve Funds</u>	

Include only district-owned transportation expenditures paid from State or local money.
DO NOT include federal expenditures or payments to contract service providers.
Contracted transportation services should not be recorded on this schedule.

LEA : 124158503 Unionville-Chadds Ford SD

Printed 10/30/2018 11:19:46 AM

Food Service / Cafeteria Operations Fund (51)

3000 Operation of Non-Instructional Services

Total

100	<u>Personnel Services – Salaries</u>	
100	Personnel Services – Salaries	571,278.00
Total Personnel Services – Salaries		\$571,278.00
200	<u>Personnel Services – Employee Benefits</u>	
220	Social Security Contributions	42,627.00
230	PSERS Retirement Contributions	237,901.00
270	Group Insurance – Self-Insurance	160,298.00
Total Personnel Services – Employee Benefits		\$440,826.00
600	<u>Supplies</u>	
610	General Supplies	844,800.00
Total Supplies		\$844,800.00
700	<u>Property</u>	
740	Depreciation	56,663.00
Total Property		\$56,663.00
Total 3000 Operation of Non-Instructional Services		\$1,913,567.00

LEA : 124158503 Unionville-Chadds Ford SD

Printed 10/30/2018 11:19:46 AM

Food Service / Cafeteria Operations Fund (51)

3100 Food Services	<u>Elementary</u>	<u>Secondary</u>	<u>Federal</u>	<u>Total</u>
100 <u>Personnel Services – Salaries</u>				
100 Personnel Services – Salaries				571,278.00
Total Personnel Services – Salaries				\$571,278.00
200 <u>Personnel Services – Employee Benefits</u>				
220 Social Security Contributions				42,627.00
230 PSERS Retirement Contributions				237,901.00
270 Group Insurance – Self-Insurance				160,298.00
Total Personnel Services – Employee Benefits				\$440,826.00
600 <u>Supplies</u>				
610 General Supplies				844,800.00
Total Supplies				\$844,800.00
700 <u>Property</u>				
740 Depreciation				56,663.00
Total Property				\$56,663.00
Total 3100 Food Services				\$1,913,567.00

LEA : 124158503 Unionville-Chadds Ford SD

Printed 10/30/2018 11:19:44 AM

Internal Service Fund (60)

2000 Support Services

Total

200 Personnel Services – Employee Benefits

270 Group Insurance – Self-Insurance	7,441,608.00
--------------------------------------	--------------

Total Personnel Services – Employee Benefits	\$7,441,608.00
---	-----------------------

300 Purchased Professional and Technical Services

330 Other Professional Services	6,950.00
---------------------------------	----------

Total Purchased Professional and Technical Services	\$6,950.00
--	-------------------

Total 2000 Support Services	\$7,448,558.00
------------------------------------	-----------------------

LEA : 124158503 Unionville-Chadds Ford SD

Printed 10/30/2018 11:19:44 AM

Internal Service Fund (60)

2800 Support Services – Central	<u>Elementary</u>	<u>Secondary</u>	<u>Federal</u>	<u>Total</u>
200 <u>Personnel Services – Employee Benefits</u>				
270 Group Insurance – Self-Insurance				7,441,608.00
Total Personnel Services – Employee Benefits				\$7,441,608.00
300 <u>Purchased Professional and Technical Services</u>				
330 Other Professional Services				6,950.00
Total Purchased Professional and Technical Services				\$6,950.00
Total 2800 Support Services – Central				\$7,448,558.00

LEA : 124158503 Unionville-Chadds Ford SD

Printed 10/30/2018 11:19:44 AM

Internal Service Fund (60)

2830 Staff Services

Elementary Secondary Federal Total

200 <u>Personnel Services – Employee Benefits</u>				
270 Group Insurance – Self-Insurance				7,441,608.00
Total Personnel Services – Employee Benefits				\$7,441,608.00
300 <u>Purchased Professional and Technical Services</u>				
330 Other Professional Services				6,950.00
Total Purchased Professional and Technical Services				\$6,950.00
Total 2830 Staff Services				\$7,448,558.00

LEA : 124158503 Unionville-Chadds Ford SD

Printed 10/30/2018 11:19:44 AM

Internal Service Fund (60)

2835 Health Services

Elementary Secondary Federal Total

200 <u>Personnel Services – Employee Benefits</u>				
270 Group Insurance – Self-Insurance				7,441,608.00
Total Personnel Services – Employee Benefits				\$7,441,608.00
300 <u>Purchased Professional and Technical Services</u>				
330 Other Professional Services				6,950.00
Total Purchased Professional and Technical Services				\$6,950.00
Total 2835 Health Services				\$7,448,558.00

	<u>Food Service(51)</u>	<u>Child Care Operations(52)</u>	<u>Other Enterprise(58)</u>	<u>Internal Service(60)</u>	<u>Total</u>
2000 <u>Support Services</u>					
2800 Support Services - Central				7,448,558.00	7,448,558.00
Total Support Services				\$7,448,558.00	\$7,448,558.00
3000 <u>Operation of Non-Instructional Services</u>					
3100 Food Services	1,913,567.00				1,913,567.00
Total Operation of Non-Instructional Services	\$1,913,567.00				\$1,913,567.00
TOTAL ACTUAL EXPENDITURES & OTHER FINANCING USES	\$1,913,567.00			\$7,448,558.00	\$9,362,125.00