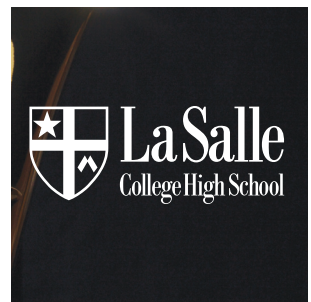
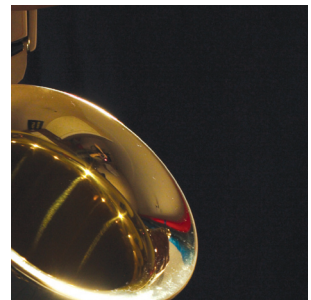
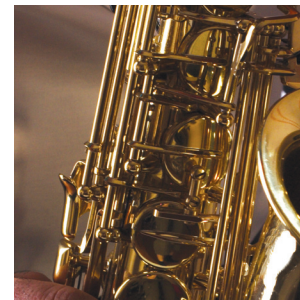
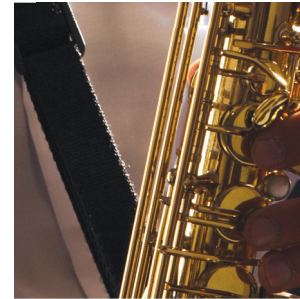


Now in its twentieth year, the La Salle Jazz Camp offers girls and boys with interest and potential in music the opportunity to hone their talents with the enjoyable atmosphere of one of the finest music programs in the Delaware Valley.



La Salle College High School  
Jazz Camp  
8605 Cheltenham Avenue  
Wyndmoor, Pennsylvania 19038  
[www.lschs.org](http://www.lschs.org)

# Jazz Camp 2020



FOR BOYS  
AND GIRLS

JUNE 15-19  
9 AM - 1 PM



## THE SCHOOL

Since 1858, La Salle has offered young men the opportunity to find their futures within strong spiritual, academic, service, and extra-curricular programs and a focus on preparation for college. Consistently ranked as among the best of the Delaware Valley independent schools in programs and facilities, La Salle recently expanded through the opening of a new music and athletic addition in January of 2002 which includes both performing space and a digital music lab. Potential applicants are welcome to contact the La Salle Admissions Office.

## THE DEPARTMENT

More than 250 students currently study instrumental and choral music in La Salle's Music Department. The Department, noted for local and regional success, offers both beginners and advanced students the opportunity to excel in a challenging and sophisticated program of performance. From the string ensemble to the lab and advanced competition bands to the choral groups, La Salle music-makers perform with distinction throughout the Delaware Valley.



**JAZZ CAMP 2020**  
**JUNE 15-19**  
**9 AM - 1 PM**  
**MONDAY-FRIDAY**

## PROGRAM OVERVIEW

From individual instruction to composing in the music lab to ensemble playing, participants in Jazz Camp will experience the fun and satisfaction of making music and improving their instrumental skills. The program includes general instruction in the understanding of jazz, individual lessons under the instruction of the talented La Salle College High School music faculty, and ensemble playing each day. All students will work in the digital music lab and may choose additional instruction in composing, arranging, and listening skills. The recreation and lunch facilities of the La Salle Dining Hall are available to participants in the program.

**JAZZ CAMP FEES** ..... **\$350**

## DIRECTIONS

La Salle College High School is located in Springfield Township, Montgomery County and is conveniently situated less than a mile from the Paper Mill Road exit of Route 309. For a complete set of maps and directions, please visit [www.lschs.org](http://www.lschs.org) or [www.mapquest.com](http://www.mapquest.com).

# 2020 Jazz Camp Application Form

STUDENT'S NAME: \_\_\_\_\_

PARENT'S NAME(S): \_\_\_\_\_

STREET ADDRESS: \_\_\_\_\_

TOWN/ STATE/ZIP: \_\_\_\_\_

HOME PHONE: \_\_\_\_\_

MOBILE PHONE: \_\_\_\_\_

WORK PHONE: \_\_\_\_\_

E-MAIL: \_\_\_\_\_

EMERGENCY CONTACT: \_\_\_\_\_

EMERGENCY PHONE: \_\_\_\_\_

INSTRUMENT(S): \_\_\_\_\_

SCHOOL: \_\_\_\_\_

GRADE (AS OF FALL 2020): \_\_\_\_\_

PARENT/GUARDIAN SIGNATURE: \_\_\_\_\_

RELATION TO STUDENT: \_\_\_\_\_ DATE: \_\_\_\_\_

## INSTRUCTIONS:

If you are interested in the program, please fill out this form and return it to La Salle College High School. Registration is open to any boy or girl from private, public, or parochial schools who is entering grades five through nine in the fall of 2020.

**JAZZ CAMP TUITION** ..... **\$350**

Please make checks payable to:  
**LA SALLE JAZZ CAMP**



**La Salle College High School**  
Jazz Camp  
8605 Cheltenham Avenue  
Wyndmoor, Pennsylvania 19038

[www.lschs.org](http://www.lschs.org)