



GRAND MOUNTAIN Mavericks newsletter

The Maverick Mission

Welcome to Grand Mountain School! We appreciate your patience and understanding as we have made several adjustments over the past month, especially related to the new start and finish times brought on by district-wide schedule adjustments due to the snowy fall season. Students in grades K-5 should no longer be waiting for older siblings in grades 6-8 to pick them up. We are also continuing to train students on safety relating to navigating traffic and the roundabout as students enter and leave school at the start and end of the day as they walk or ride their bikes to and from school. Please continue to reinforce these habits at home so we can have these safety procedures dialed-in to help students safely navigate traffic and the roundabout. Also, we are working to help students understand the differences between just joking around, being mean, peer conflict, and bullying. Bullying is, when repeated, unwanted and aggressive behavior occurring on purpose with the intent to cause harm. It can be social, verbal, physical, or through the use of online means. The counselling center is teaching grade-level appropriate lessons to help students mediate peer conflict, be nicer, and understand when and how joking around is ok. (See the "Counseling Corner" of this newsletter for more information).

Thank you parents, students, and staff for making GMS a grand place to be!
- Mr. Pohl, Principal / Ms. Keri Lindaman, Secondary VP / Ms. Ursula Reese, Elementary VP

Maverick - (noun) /mav-rik/ - an unorthodox or independent-minded person, an unbranded range animal. Synonyms: individualist, free spirit, original, trendsetter.

School Hours & Office Contact



Office: (719) 391-3470

Breakfast Entry: 7:15

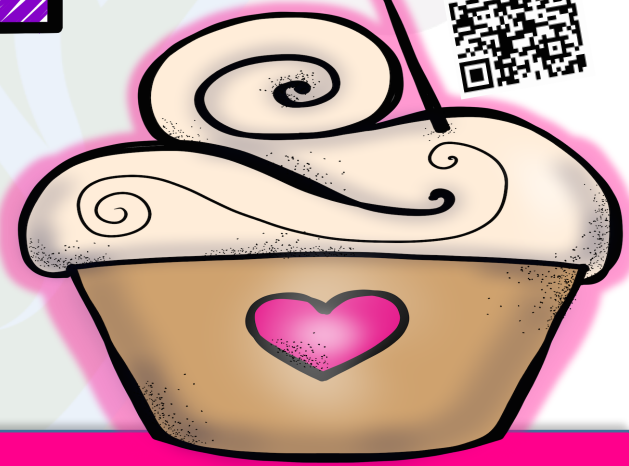
1st Bell Entry: 7:30

Tardy Bell: 7:35

Elementary Dismissal: 2:45

Junior High Dismissal: 3:05

Visit our GMS website! Scan the QR Code or visit:
[HTTPS://9GRANDMOUNTAIN.WSD3.ORG/9GRAND-MOUNTAIN-NEWS](https://9grandmountain.wsd3.org/9grand-mountain-news)



Do not drop off your child before 7:20 AM. (unless they are in before school care or eating breakfast) There is NO supervision during this time.

February 2020

"A SCHOOL FOR THE MIND; A HOME FOR THE HEART."

From the Front Office



Absences

If your child is going to be absent from school please contact the front office *as soon as possible - before 8:30am*. If no one answers, or if it is early, you may leave a message and our front office staff will update your child's attendance. Thanks!

Attendance:

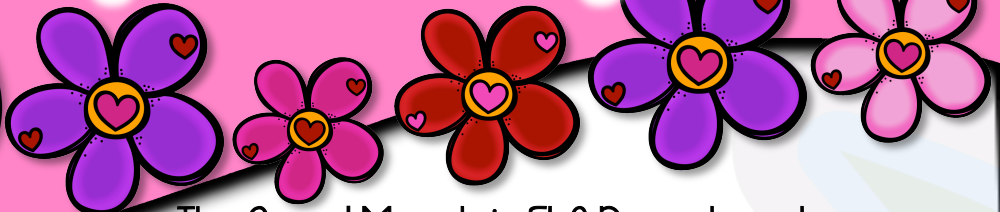
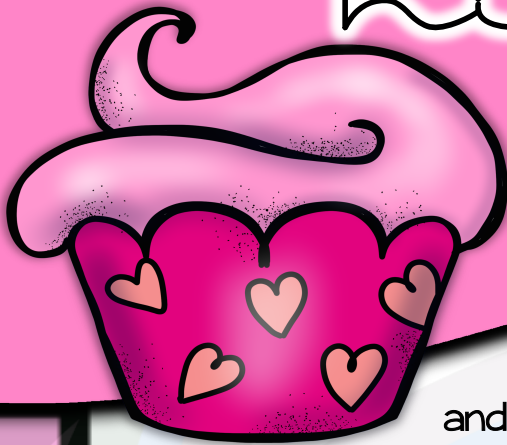
719- 391 - 3471

Front Office:

719- 391 - 3470

English Language Arts

highlights



The Grand Mountain ELA Department is busy helping students become critical readers

and writers. **Sixth graders** are continuing to work on

non-fiction text in Unit 3 - Technology. Students seem to be really enjoying this unit as we are having great lessons and discussions over material they are definitely familiar with.

Seventh graders are grappling with the Essential Question in Unit 5- Facing Adversity: "How do we overcome obstacles?" Students are reading informational texts and will craft their own informational essays. The same question will be examined as we begin reading our novel for this quarter.

Eighth graders are currently studying Unit 3 - What Matters. We are focusing on the Essential Question: "When is it right to take a stand?" In this unit we will practice analyzing persuasive arguments and crafting some of our own. Students are also reading *The Outsiders* by S.E. Hinton. "Stay gold, Ponyboy!"

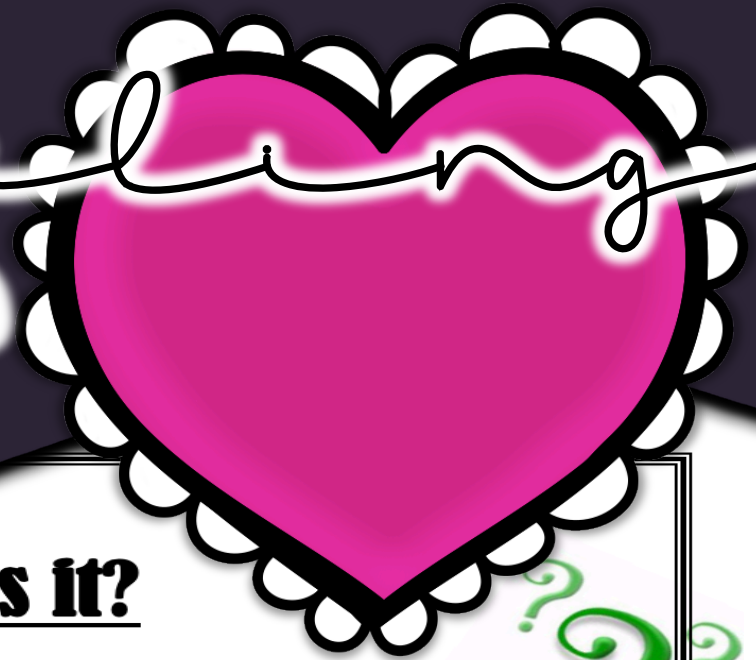
Testing season is around the corner and we are busy preparing our students. **ATTENDANCE IS CRUCIAL DURING THIS TIME** so that all students are benefitting from the skills and strategies we are covering. Please make sure they are getting a good night's sleep and eating healthy. All of these things mentioned above will be helpful in getting our students prepared as best as possible.

Lastly, it is that time of year when students' supplies may be running low. Please check in with your child to be sure they have plenty of pencils and paper on hand to bring to class each day. As a department, we would like to thank the Grand Mountain community for all of their support.

February 2020

"A SCHOOL FOR THE MIND; A HOME FOR THE HEART."

Counseling Corner



What is it?

Just Joking:

- Everyone is having *FUN* together.
- No one feels hurt. Each person is choosing to participate.

Being Mean:

- A person is being mean to others on purpose.
- It usually happens as a reaction to a strong emotion like embarrassment, sadness, or anger.
- It happens *ONCE* and is not a repeating event.

Peer Conflict:

- Two or more people have a fight, *ARGUMENT*, or disagreement.
- A solution can be found easily with open communication.

Bullying:

- When *REPEATED*, unwanted, aggressive behavior happens towards someone.
- It happens repeatedly and *ON PURPOSE*.
- Intent is to cause harm to someone else.
- It can be social, verbal, physical, or cyber harm.

“You will never reach higher ground if you are always pushing others down.” – Jeffrey Benjamin

Tiana DeSimon
Counseling Secretary
DeSimonTiana@wsd3.org

Jill Zuvac K-5 Counselor
719-391-3325
zuvacj@wsd3.org

Taylor Moore 6-8 Counselor
719-391-3366
mooretaylor@wsd3.org

Courtnee Divine Social Worker
719-391-3467
divinecourtnee@wsd3.org

February 2020

“A SCHOOL FOR THE MIND; A HOME FOR THE HEART.”

Counseling Corner



A student's right to privacy and confidentiality is the basis for an effective school counseling program. As school counselors at GMS, we are ethically required to keep confidentiality of our students to build trust in the student/counselor relationship. Counselors work to establish rapport and must respect the student's privacy so they are free to explore issues, feelings and behaviors. There are some limitations to confidentiality, and these limitations are communicated with students:

1. When a student discloses that they are being hurt
2. When a student discloses thoughts of hurting themselves
3. When a student discloses hurting someone else
4. When the student gives us permission to disclose to specific people (such as parents)

If you have any questions or concerns about confidentiality, please let us know in the counseling office!

Tiana DeSimon
Counseling Secretary
DeSimonTiana@wsd3.org

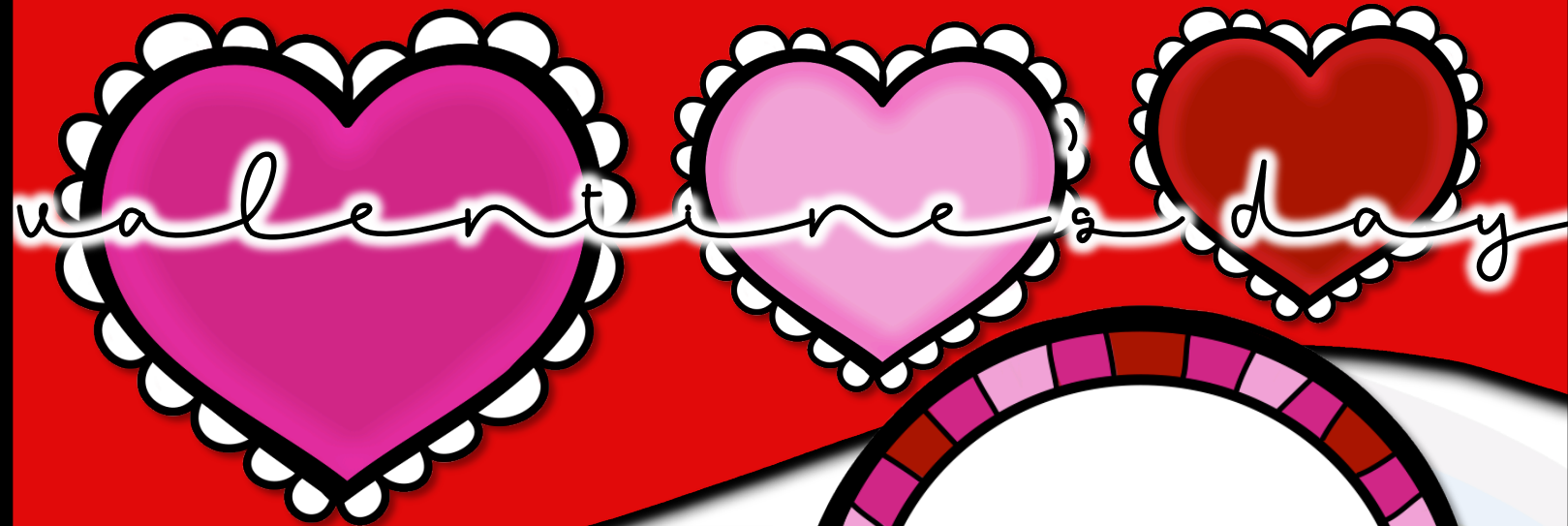
Jill Zuvac K-5 Counselor
719-391-3325
zuvacj@wsd3.org

Taylor Moore 6-8 Counselor
719-391-3366
mooretaylor@wsd3.org

Courtnee Divine Social Worker
719-391-3467
divinecourtnee@wsd3.org

February 2020

"A SCHOOL FOR THE MIND; A HOME FOR THE HEART."



Happy Valentine's Day 

To: _____

From: _____

Teacher: _____

Grade: _____

XOXOXOXOXO



Have someone you want to say "Happy Valentine's Day" to? Or maybe you'd like to tell a staff member you appreciate their hard work? If so, what better way than to send them a colorful friendship bracelet on Valentine's Day! GMS PTO will be accepting order forms **Monday, February 3rd through Friday, February 7th**. Please fill out the order forms and return to class with exact change (checks made out to GMS PTO). If you need more order forms, please feel free to make copies, get extras from the office, or print some out (see next page or visit the news section of our website).

Friendship bracelets are \$0.50 each

Printouts

Happy Valentine's Day 

To: _____

From: _____

Teacher: _____

Grade: _____

XOXOXOXO

Happy Valentine's Day 

To: _____

From: _____

Teacher: _____

Grade: _____

XOXOXOXO

Happy Valentine's Day 

To: _____

From: _____

Teacher: _____

Grade: _____

XOXOXOXO

Happy Valentine's Day 

To: _____

From: _____

Teacher: _____

Grade: _____

XOXOXOXO

Happy Valentine's Day 

To: _____

From: _____

Teacher: _____

Grade: _____

XOXOXOXO

Happy Valentine's Day 

To: _____

From: _____

Teacher: _____

Grade: _____

XOXOXOXO

Happy Valentine's Day 

To: _____

From: _____

Teacher: _____

Grade: _____

XOXOXOXO

Happy Valentine's Day 

To: _____

From: _____

Teacher: _____

Grade: _____

XOXOXOXO

PTO

Corner

PTO will be doing the FundRun in the spring (April – exact date has yet to be determined) and will need volunteers to help with everything from seeking donations to helping to run the actual event. If interested in helping, please let us know.

Scan the QR code to be taken to our FB page



To keep up to date with all PTO happenings please like Grand Mountain Families page on Facebook.

Upcoming Events

- ♥ Valentine's Day bracelets sales will run from February 3rd-7th (will be sold for \$.50 each) – forms are being sent home with students and included in this newsletter for print
- ♥ Grand Mountain Spirit Night at Chuck E Cheese (Fundraiser) – February 26th from 3:00 – 9:00 pm
- ♥ BAAG (4:30) & PTO (5:30) Meetings - February 27th

Download the Box Tops App at

<https://www.boxtops4education.com/>

then take a photo of your receipts. Any eligible items will automatically go to our school.

You can still bring in the physical box tops!

February 2020

"A SCHOOL FOR THE MIND; A HOME FOR THE HEART."

Weather Reminders & Schedule Changes

With colder weather here, please be sure to send your child to school with the appropriate cold-weather gear: jacket, gloves/mittens, scarves, closed-toed shoes, etc. If you would like assistance in this area, please contact our school's counselors or social worker.

Severe weather Reunification:

Due to severe weather, lightening, wind or snow, Grand Mountain is unable to release students safely to parents. Staff will relocate students to areas that parents can go to inside the school for pick up.

1. Preschool and Kindergarten will remain in their rooms and parents can pick them up there.
2. 1st grade, 2nd grade and 3rd grade will move to the cafeteria and parents can enter through the front door and into the cafeteria.
3. 4th grade, 5th grade, 6th grade, 7th grade and 8th grade will move to the gym parents can enter through the front doors and into the gym.
4. Teachers are to escort their class to the assigned areas.

Once the parent unites with their child they will exit out the front doors. Phone calls to parents will be made for remaining students.

If busses are able to run, students will be released to load the bus. If busses are unable to run students will be picked up in the above areas by parents.

Red Flag Days

Red Flag Days will occur when the temperature during morning arrival (including wind chill) is below 25 degrees. The red flag will fly under the Colorado flag at the front of the building indicating Red Flag status. We are awaiting the installation of a red flag pole at the back of the building as well. An announcement will also be made at 7:25 am.

- a. Kindergarten students should enter the building through their exterior classroom doors and will be supervised by kindergarten teachers.
- b. Students in grades 1-4 should enter the building via the back cafeteria door entrance. This door will unlock at 7:25 am. Students in grades 1-4 should report to their grade level wings and will sit in assigned areas outside of their classrooms.
- c. Students in grades 5-8 will enter the building via the back gym door entrance. Students in grade 5 will sit with their classes at the half-court line. Grades 6-8 will sit in rows along the south wall of the gym.
- d. Breakfast will continue as usual in the cafeteria.
- e. Parents must check-in through the Front Office in order to enter the building.

Schedule Changes

Grand Mountain School will be adding 10 minutes to the start of the day for both elementary and junior high students beginning January 8th, 2020 through the end of the school year. The Board of Education approved this last evening for WSD3 Schools in order to meet required student-teacher contact time per Colorado State Statute. The new start time will be 7:35 a.m. (with the first bell ringing at 7:30).

The end time for elementary will also change to 2:45 p.m. The end time for junior high students will remain the same at 3:05 p.m.

At the elementary level, the adjustment to the end of the day is necessary to ensure our elementary staff has adequate planning time commensurate with other district elementary staff.

We did not add time to the elementary day because GMS students are already in school 20 minutes longer than other innovation elementary schools, and 40 minutes longer than our traditional elementary schools. We shortened the elementary day to align with our other innovation elementary schools and to give GMS elementary teachers comparable plan time.

There are many considerations we have to take into account as we adjust to these new times. Our plan is to notify you once we have the new plans in place and any adjustments that we foresee may affect your students here at GMS due to these changes being made and how we can ideally account for them.

We greatly appreciate your patience and cooperation as we work through this new schedule.

February 2020

"A SCHOOL FOR THE MIND; A HOME FOR THE HEART."

Elementary Specials:

- Blue = Day 1
- Green = Day 2
- Grey = Day 3
- Grand = Day 4
- Mountain = Day 5
- Mavericks = Day 6
- Algorithm = Day 7
- Programming = Day 8

Important Dates:

- February 3rd - Kids Heart Challenge Kickoff Assembly (k-5) 2:15-2:45
- February 4th - Knowledge Bowl Competition (Grade 6) 4:30 - 6:30
- February 6th - Spelling Bee (4th - 5th Grades)
- February 7th - PD for staff. No school for students
- February 11th - Knowledge Bowl Competition (Grade 7) 4:30 - 6:30
- February 13th - 3rd QTR Midterms go home
- February 17th - Presidents' Day - No School
- February 25th - Knowledge Bowl Competition (Grade 8) 4:30 - 6:30
- February 26th - Spirit Night Fundraiser @ Chuck E Cheeses 3:00 - 9:00
- February 27th - BAAC & PTO Meeting 4:30 - 6:30 (5:30 for PTO)
- February 27th - District Speech Competition



February 2020

SUNDAY MONDAY TUESDAY WEDNESDAY THURSDAY FRIDAY SATURDAY

Note: If your child participates in any before or afterschool sports or programs, please know that those dates are not on this calendar. Check out our school's calendar by scanning the QR code to the right, or by visiting: <https://grandmountain.wsd3.org/calendar>



						1
2	Mavericks 3	Algorithm 4	Programming 5	Blue 6	7	8
	Kids Heart Challenge Kickoff Assembly K-5	Knowledge Bowl Competition 6th Grade		Spelling Bee 4th - 5th Grades	PD Day NO School	
9	Green 10	Grey 11	Grand 12	Mountain 13	Mavericks 14	15
		Knowledge Bowl Competition 7th Grade		3rd Quarter Midterms Sent Home		
16	17	Algorithm 18	Programming 19	Blue 20	Green 21	22
	Presidents Day NO School					
23	Grey 24	Grand 25	Mountain 26	Mavericks 27	Algorithm 28	29
		Knowledge Bowl Competition 8th Grade	CHUCK E. CHEESE'S Fundraiser	BAAC & PTO Meeting District Speech Competition		