

TRANSFORMATIVE LEARNING ENVIRONMENTS SYMPOSIUM



VLK | ARCHITECTS

- **Gain insight into today's learners, and best practices related to their needs**
- **Receive timely information regarding drivers in education**
- **Familiarize the group with best practices incorporating architectural responses to next generation learning**
- **Reflect on possibilities for Stafford MSD**





STAFFORD MSD TODAY



NEXT GENERATION LEARNING



DRIVERS IN EDUCATION



CURRENT CONSTRAINTS



TRANSFORMATIVE LEARNING ENVIRONMENTS



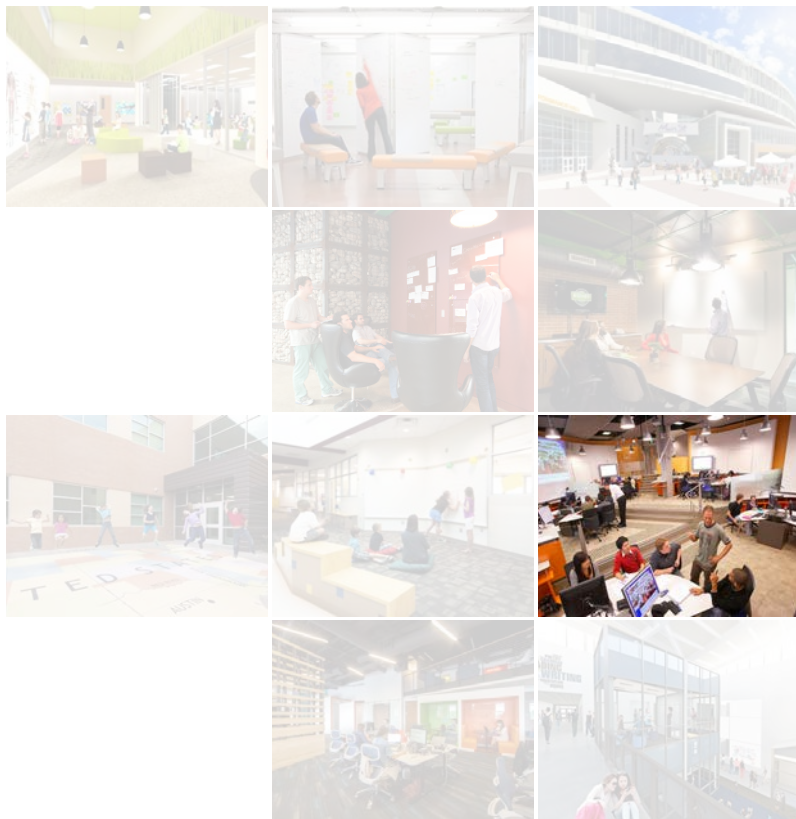
REFLECTION ACTIVITY



**WHEN I THINK ABOUT TEACHING
AND LEARNING IN
STAFFORD MSD, I AM MOST
PROUD OF _____.**







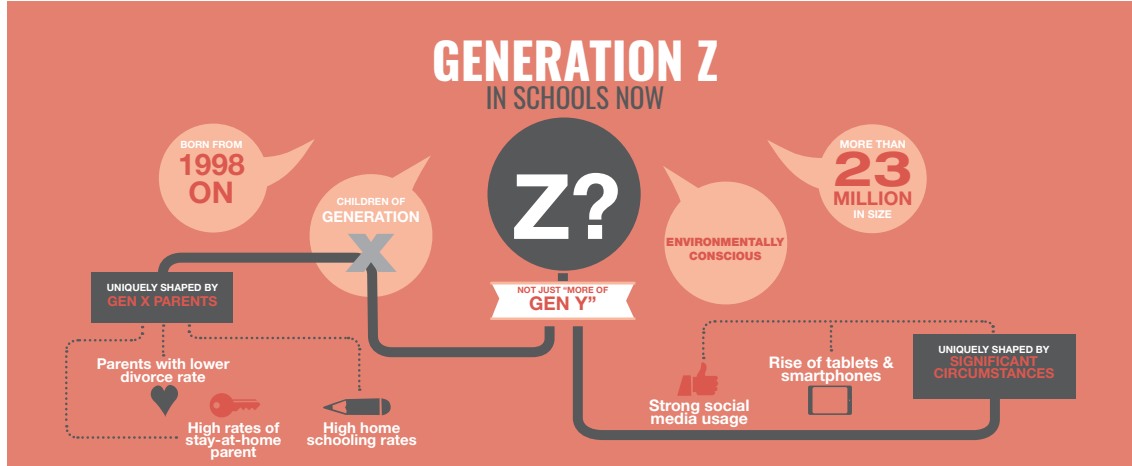
NEXT GENERATION LEARNING



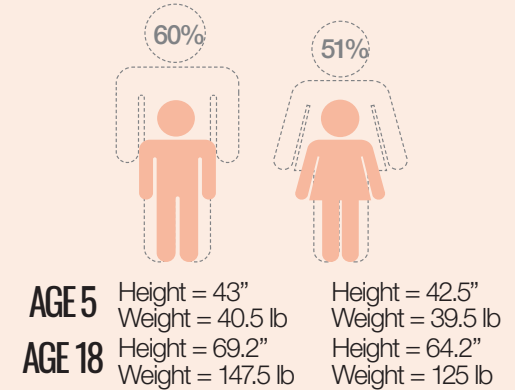
VLK | ARCHITECTS

NEXT GENERATION LEARNING

GENERATION Z



BODY DEVELOPMENT



CORE CHANGES



ELEMENTARY SCHOOL CHILDREN

move from their egocentrism and develop language structure in order to begin to communicate logical thinking. They struggle with the abstract and hypothetical, but begin to wonder how others think and feel.

MIDDLE SCHOOL ADOLESCENTS

begin to understand abstract ideas. They develop moral philosophies including rights and privileges. They become comfortable establishing and maintaining relationships, and question the values of others.

HIGH SCHOOL STUDENTS

begin to find multiple solutions to problems. They use deductive reasoning, and can conceptualize the abstract. They question authority and seek role models while needing structure and craving autonomy.

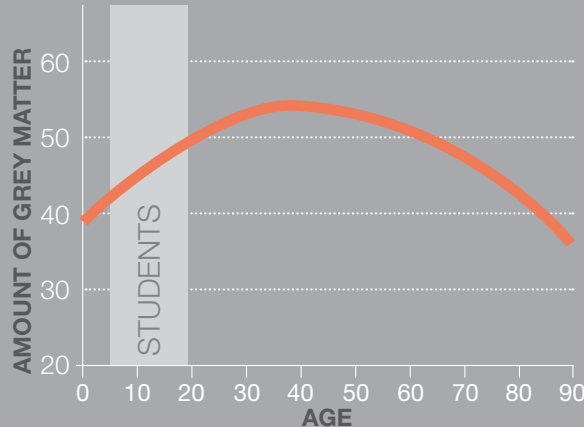


NEXT GENERATION LEARNING

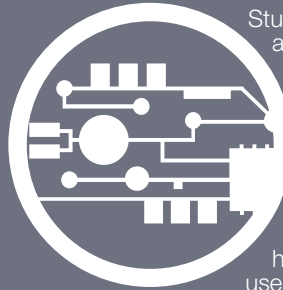
GENERATION Z

BRAIN DEVELOPMENT

For many years it was believed brain development largely finished during the teen years. However, scientists have found that the brain continues to change into the early 20s with the frontal lobes, responsible for reasoning and problem solving, developing last.



TECHNOLOGY



Students easily manipulate a variety of technology tools that contribute to their learning. Our newest generation is changing the way we communicate. They ask for schools to support their comfort level with technology, rather than have them discontinue its use during class time.



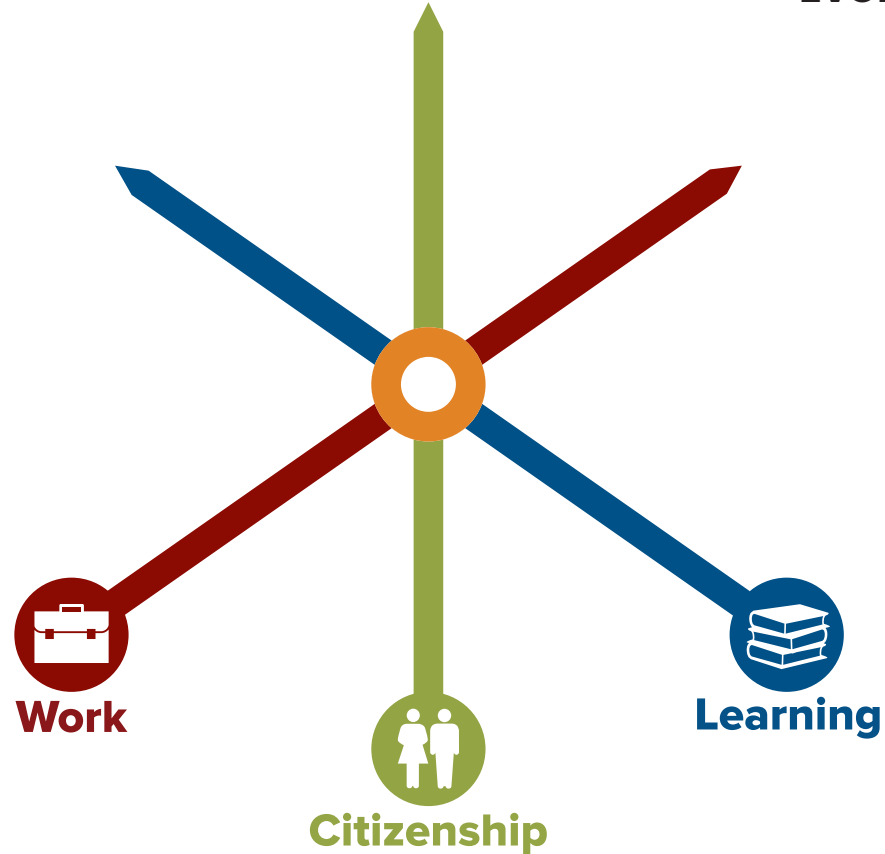
State standards and student learning styles are demanding an approach for observation, discovery, and experimentation. Students need active learning environments **regardless of the content or age level.**

INQUIRY-BASED LEARNING



NEXT GENERATION LEARNING

EVOLUTION OF EDUCATION



© Tony Wagner

NEXT GENERATION LEARNING

EVOLUTION OF EDUCATION

General
Cognitive
Ability



VLK | ARCHITECTS

NEXT GENERATION LEARNING

EVOLUTION OF EDUCATION

CRITICAL THINKING / PROBLEM SOLVING

COLLABORATION

AGILITY / ADAPTABILITY

INITIATION / ENTREPRENEURSHIP

Oral / Written Communication

Accessing / Analyzing Information

curiosity / iMAGINATION



VLK | ARCHITECTS

NEXT GENERATION LEARNING

EVOLUTION OF EDUCATION



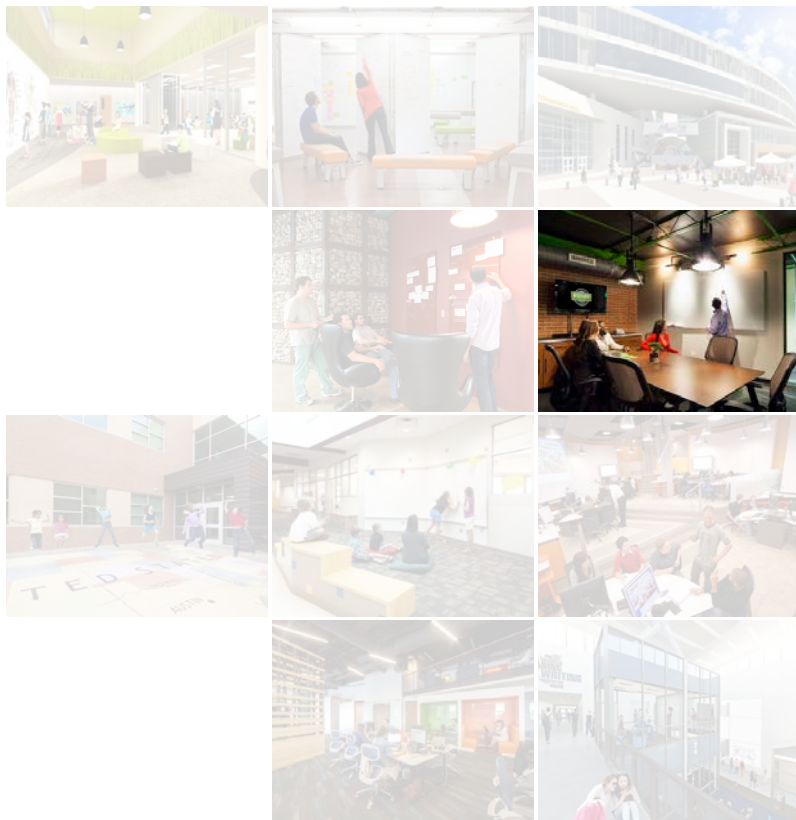
VLK | ARCHITECTS

NEXT GENERATION LEARNING

EVOLUTION OF EDUCATION



VLK | ARCHITECTS



CURRENT DRIVERS IN EDUCATION



VLK | ARCHITECTS

CURRENT DRIVERS IN EDUCATION

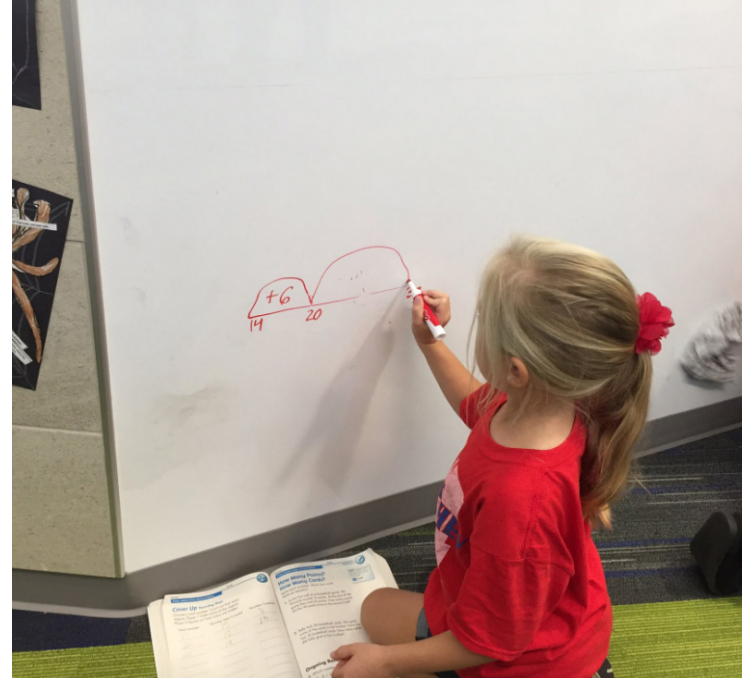
EARLY CHILDHOOD

HIGH - QUALITY PRE-KINDERGARTEN GRANT

- \$1500 per student
- Authorized by House Bill 4

GRANT REQUIREMENTS:

- Curriculum
- Teacher Qualifications
- Academic Performance
- Family Engagement



CURRENT DRIVERS IN EDUCATION

HOUSE BILL 5 GRADUATION REQUIREMENTS

FOUNDATION HIGH SCHOOL PROGRAM

- 22 Credits + 1 Endorsement
- Authorized by House Bill 5

ENDORSEMENTS ALLOW FOR STUDENT CHOICE BASED ON CAREER INTERESTS

- STE(A)M
- Business & Industry
- Public Service
- Arts & Humanities
- Multi-Disciplinary Studies



CURRENT DRIVERS IN EDUCATION

HOUSE BILL 5 GRADUATION REQUIREMENTS

STE(A)M

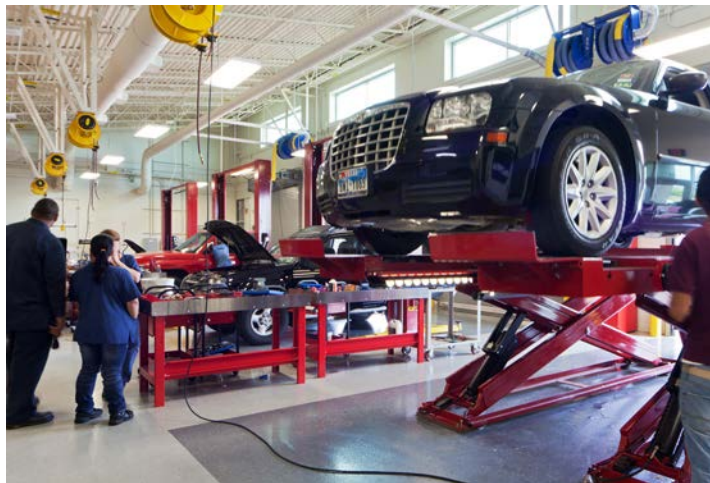
- Science
- Computer Science
- Mathematics
- Career & Technical Education related to STE(A)M
- Arts



CURRENT DRIVERS IN EDUCATION

CAREER & TECHNICAL EDUCATION

Comprehensive curriculum provided by a coherent sequence of courses in 16 career clusters developed by AchieveTexas and approved by the Texas Education Agency



CURRENT DRIVERS IN EDUCATION

CAREER & TECHNICAL EDUCATION

- **Agriculture, Food & Natural Resources**
- **Arts, A/V Technology & Communications**
- **Education & Training**
- **Government & Public Administration**
- **Hospitality & Tourism**
- **Information Technology**
- **Manufacturing**
- **STEM**



CURRENT DRIVERS IN EDUCATION

CAREER & TECHNICAL EDUCATION

- **Architecture & Construction**
- **Business Management & Administration**
- **Finance**
- **Health Science**
- **Human Services**
- **Law, Public Safety & Security**
- **Marketing**
- **Transportation, Distribution & Logistics**





TRANSFORMATIVE LEARNING ENVIRONMENTS



VLK | ARCHITECTS

TRANSFORMATIVE LEARNING ENVIRONMENTS

EVOLUTION OF EDUCATION



VLK | ARCHITECTS

TRANSFORMATIVE LEARNING ENVIRONMENTS

EVOLUTION OF EDUCATION



VLK | ARCHITECTS

TRANSFORMATIVE LEARNING ENVIRONMENTS

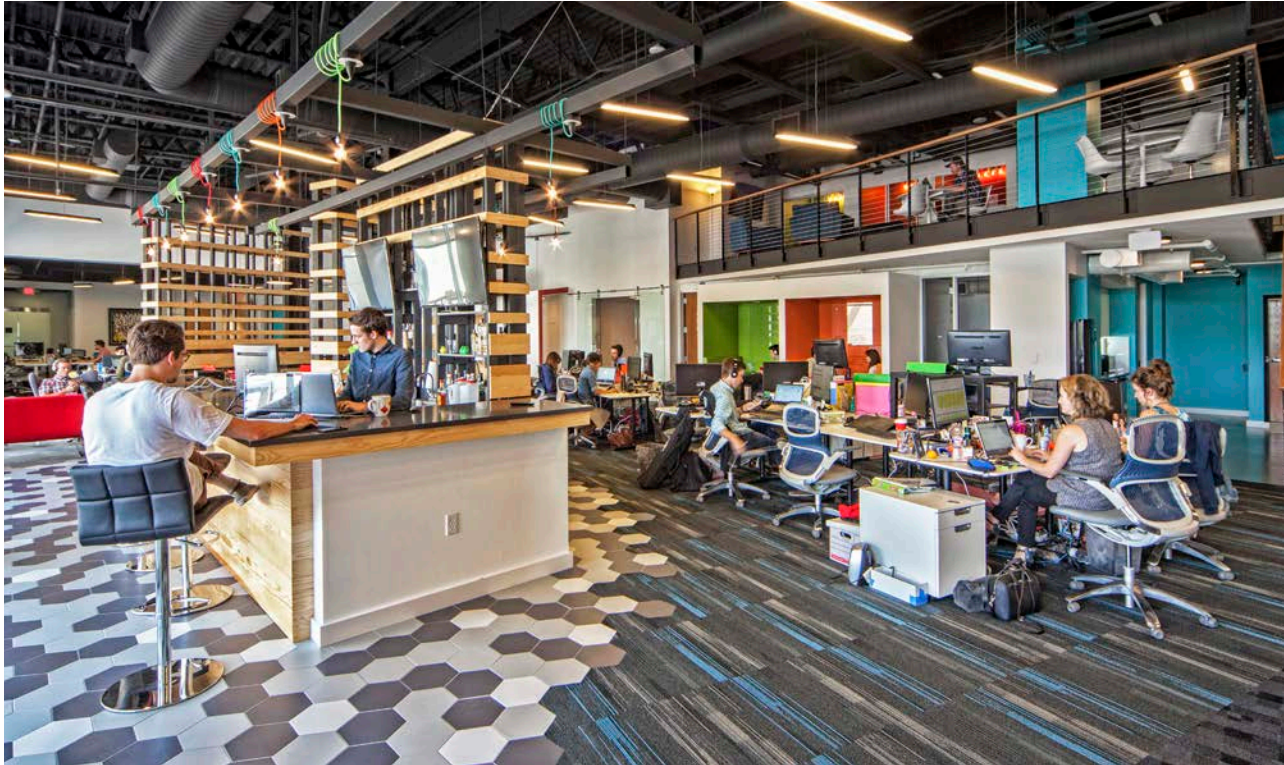
EVOLUTION OF EDUCATION



VLK | ARCHITECTS

TRANSFORMATIVE LEARNING ENVIRONMENTS

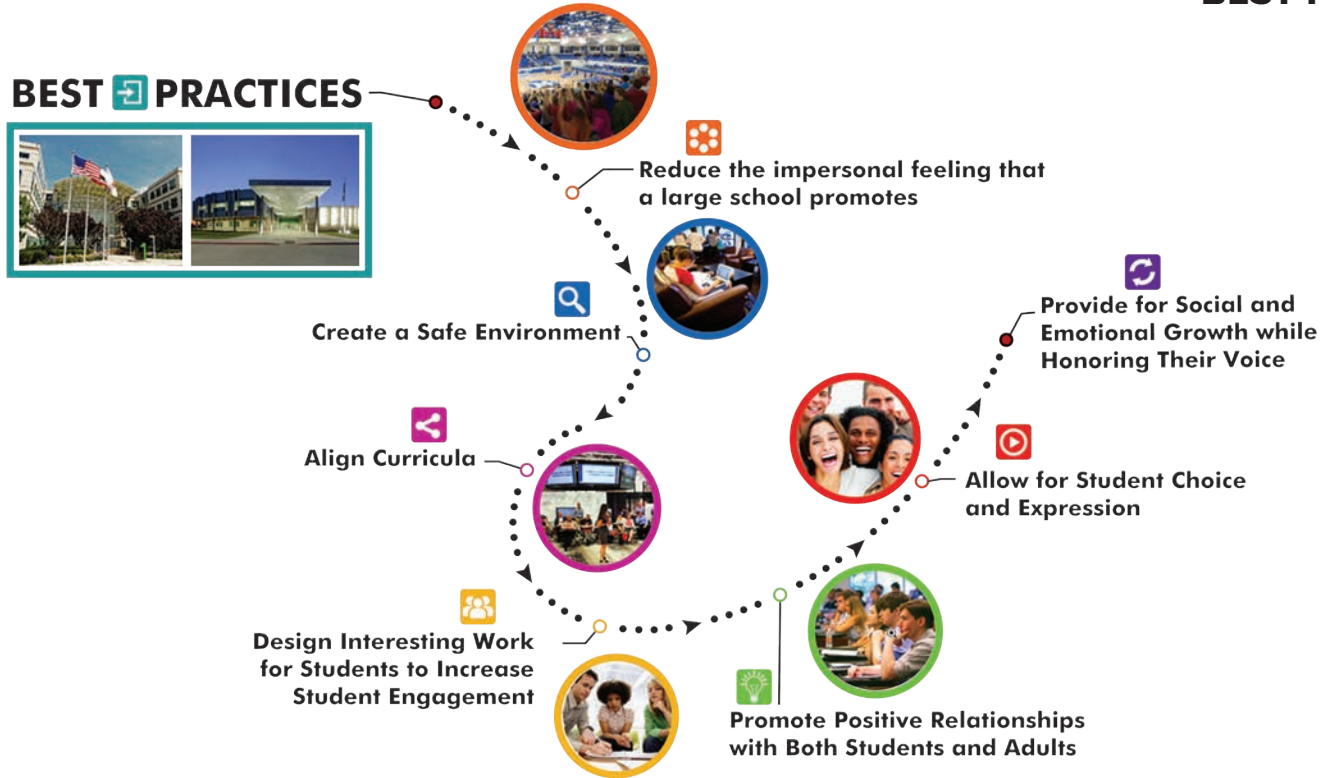
EVOLUTION OF EDUCATION



VLK | ARCHITECTS

TRANSFORMATIVE LEARNING ENVIRONMENTS

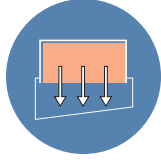
BEST PRACTICES



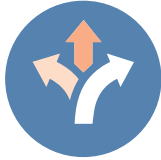
TRANSFORMATIVE LEARNING ENVIRONMENTS



COLLABORATION



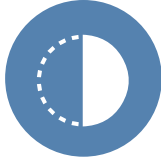
EXTENDING THE LEARNING ENVIRONMENT



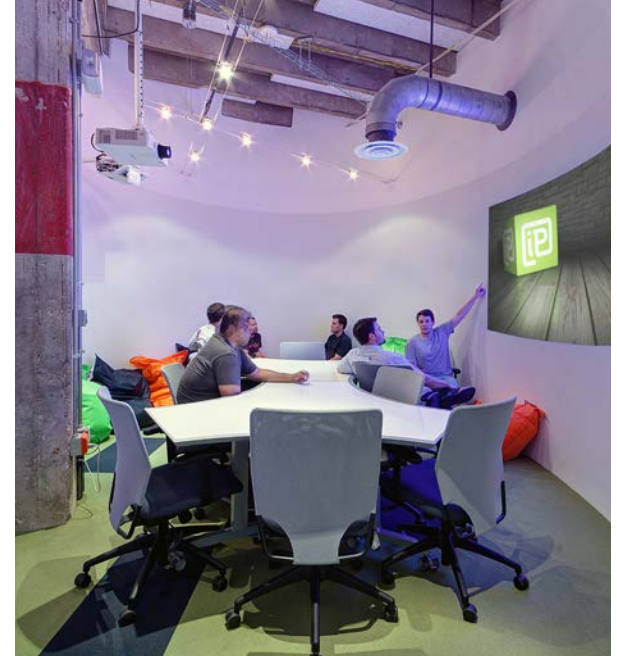
FLEXIBILITY



FURNISHINGS

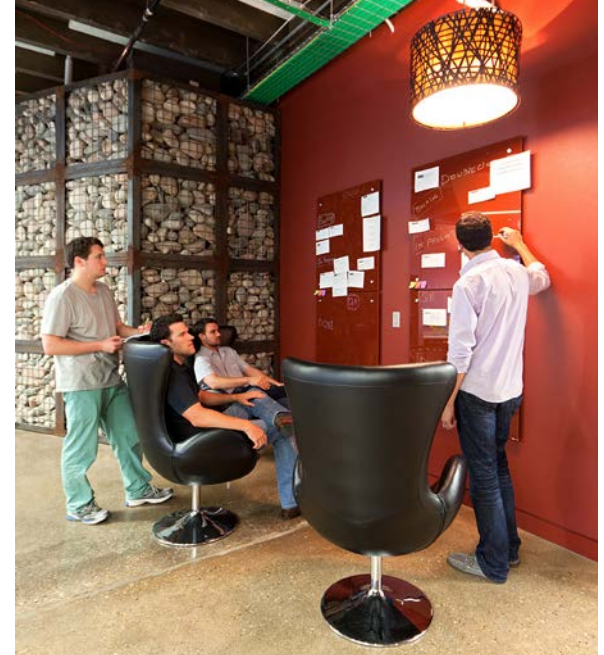


TRANSPARENCY



VLK | ARCHITECTS

TRANSFORMATIVE LEARNING ENVIRONMENTS



VLK | ARCHITECTS

TRANSFORMATIVE LEARNING ENVIRONMENTS

COLLABORATION



VLK | ARCHITECTS

TRANSFORMATIVE LEARNING ENVIRONMENTS

COLLABORATION



VLK | ARCHITECTS

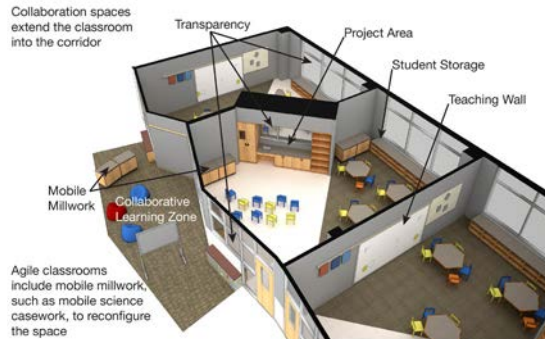
TRANSFORMATIVE LEARNING ENVIRONMENTS

COLLABORATION



VLK | ARCHITECTS

TRANSFORMATIVE LEARNING ENVIRONMENTS



TRANSFORMATIVE LEARNING ENVIRONMENTS

FLEXIBILITY



VLK | ARCHITECTS

TRANSFORMATIVE LEARNING ENVIRONMENTS

FLEXIBILITY



VLK | ARCHITECTS

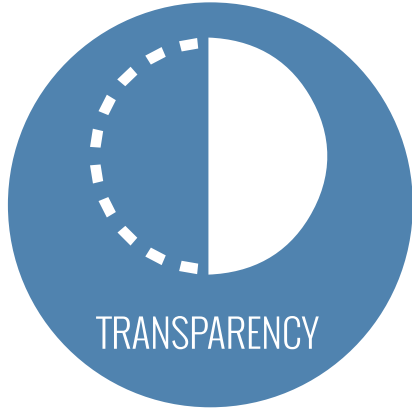
TRANSFORMATIVE LEARNING ENVIRONMENTS

FLEXIBILITY



VLK | ARCHITECTS

TRANSFORMATIVE LEARNING ENVIRONMENTS



VLK | ARCHITECTS

TRANSFORMATIVE LEARNING ENVIRONMENTS

TRANSPARENCY



VLK | ARCHITECTS

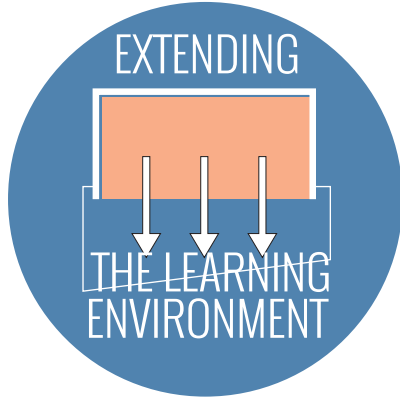
TRANSFORMATIVE LEARNING ENVIRONMENTS

TRANSPARENCY



VLK | ARCHITECTS

TRANSFORMATIVE LEARNING ENVIRONMENTS



TRANSFORMATIVE LEARNING ENVIRONMENTS

EXTENDING THE LEARNING ENVIRONMENT



VLK | ARCHITECTS

TRANSFORMATIVE LEARNING ENVIRONMENTS

EXTENDING THE LEARNING ENVIRONMENT

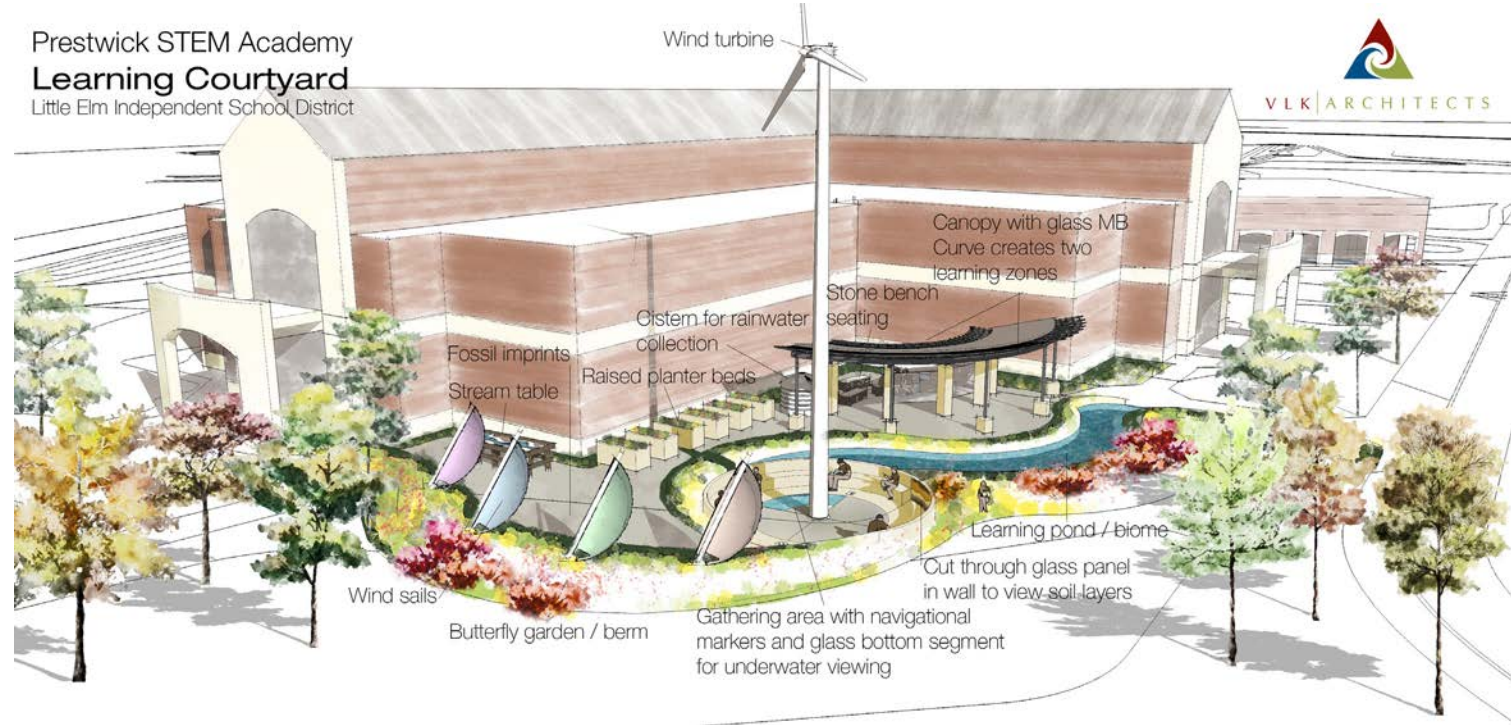


VLK | ARCHITECTS

TRANSFORMATIVE LEARNING ENVIRONMENTS

EXTENDING THE LEARNING ENVIRONMENT

Prestwick STEM Academy
Learning Courtyard
Little Elm Independent School District



VLK | ARCHITECTS



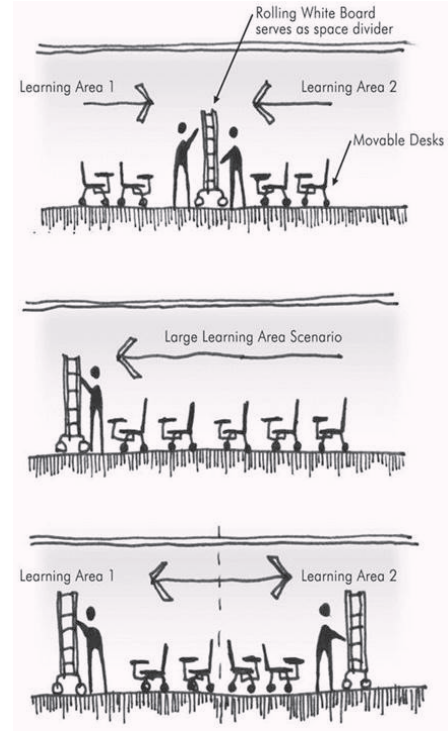
VLK | ARCHITECTS

TRANSFORMATIVE LEARNING ENVIRONMENTS



TRANSFORMATIVE LEARNING ENVIRONMENTS

FURNISHINGS



TRANSFORMATIVE LEARNING ENVIRONMENTS

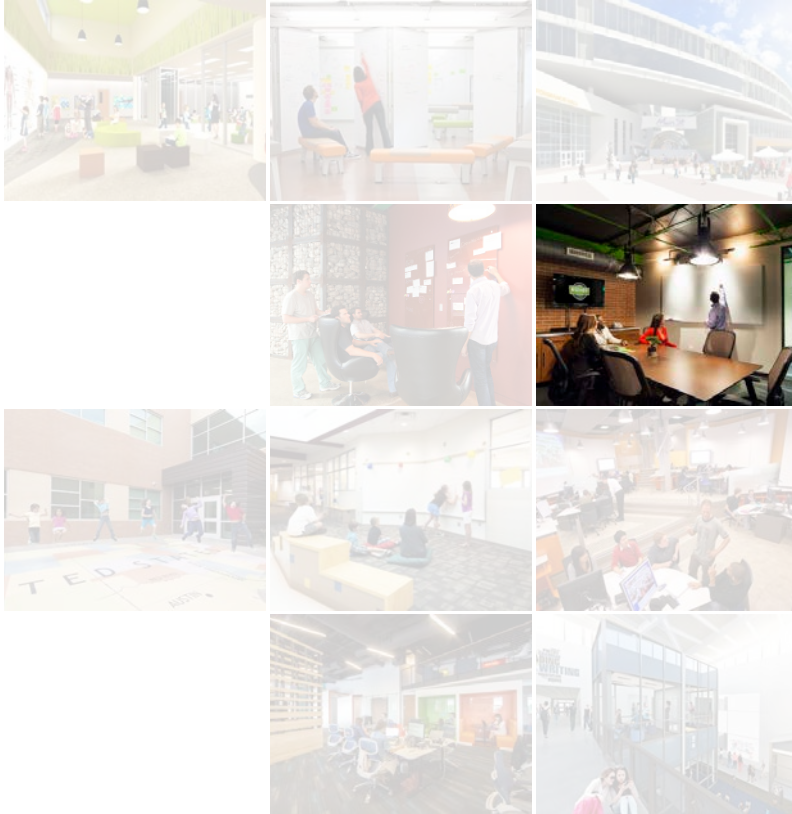
FURNISHINGS



TRANSFORMATIVE LEARNING ENVIRONMENTS

FURNISHINGS





REFLECTION ACTIVITY



REFLECTION ACTIVITY

**After tonight, when we think about
the future of teaching and
learning / academics in Stafford MSD,
we wish _____.**





DR. DALANE BOUILLION

EDUCATION PLANNER



@DEBOUILLION



KEN HUTCHENS

PRINCIPAL OF CREATIVE



@KENHUTCHENS1



VLK | ARCHITECTS