

Renton School District Plan Annex Introduction

Introduction

Renton School District is located 12 miles south of Seattle, WA. The district supports 16,417 students and 5,000 staff members. Renton School District erected its first public school in 1853, in 1871 a new school was built to accommodate 12 students and by 1876 grew to support 82 students. Today the District has more than 37 buildings and supports 16,417 students.

Renton School District is located within the City of Renton and relies heavily on the City of Renton's Emergency Planning to support its own Emergency Response Plan. In the event of an emergency, the district would follow district policies and procedures and would coordinate with local jurisdictions, including the City of Renton, City of Newcastle and unincorporated King County to support the safety of students and staff.

Climate - In Renton, summers are short, warm, dry, and partly cloudy and the winters are cold, wet, and mostly cloudy. Over the course of the year, the temperature typically varies from 37°F to 79°F and is rarely below 27°F or above 89°F.

Population Growth - Between 2017 and 2018, population growth in Renton has been relatively flat, adding less than 50 people to the community. However, since 2010 Renton has grown by nearly 10,000 people, increasing from 92,345 residents to 102,153.

The District understands the impact of this growth on our schools and has been fortunate to have the support of our community to respond to this growth. Over the past 5 years, the community has approved two measures to fund new construction and school improvements; the 2016 Levy authorizing \$99,993,150 and an additional \$246,000,000 approved in a 2019 Bond measure. A new elementary school, Safety and Security upgrades, and new Science classrooms at the High School level are among the projects that will be completed.

RENTON SCHOOL DISTRICT
NO. 403

15 - Elementary Schools

4 - Middle Schools

4 - High Schools

3 - Administrative Buildings

5 - Alternative Program Site

Jurisdiction Point of Contact:

Name: Susie Whitlock
Title: Chief of Support Services
Entity: Renton School District
Phone: 253.312.5755
Email: susanne.whitlock@rentonschools.us

Plan Prepared By:

Name: Alisha Smothers
Title: Administrative Assistant to Susie Whitlock
Entity: Renton School District
Phone: 425.204.4414

Development Trends

The City of Renton's population has historically grown at more than one percent per year.

The overall growth rate is expected to continue, especially over the next couple of years. Several multi-family developments are in the planning stages which are likely to increase enrollment with the school district. Along with major residential growth, Renton is also welcoming to the growth of commercial businesses to help maintain a thriving economic environment. This allows many local residences to live and work within the limits of Renton, WA.

Renton area has been sustained by the City's geographically advantageous position within the Puget Sound region. This is an advantage for many residences who want the opportunity to work in the many surrounding cities, including Seattle, Issaquah, and Bellevue. In order to support the future that Renton is

planning, it is necessary to maintain and expand roadways and highways.

Employment throughout the city is diverse and includes manufacturing, aerospace, professional services, destination retail, healthcare, and technology. Additionally, Renton School District and Renton Technical College employ a significant number of employees in a range of job fields.

Renton School District Risk Summary

Hazard Risk and Vulnerability Summary

HAZARD	HAZARD SUMMARY	VULNERABILITY SUMMARY	IMPACT SUMMARY
Avalanche	Renton School District is not at risk for an avalanche.	None	None
Earthquake	Earthquakes can be the most destructive hazard for Renton. An earthquake is a shaking or sometimes violent trembling of the earth which results from sudden shifting of rock beneath the earth's crust. This sudden shifting releases energy to which can result in many other hazards to Renton such as landslides, tsunamis, and flooding. The city is subject to a major earthquake generated by the Seattle Fault to the north, and the Cascadia Subduction Zone offshore to the west, which can generate an earthquake in the 8.0- 9.0 range. Additional minor	Renton is geographically located within an area known as the Pacific Ring of Fire. A significant number of active fault lines or cracks in that crust have been identified in the central Puget Sound area including Seattle and King County. The nearest major active fault is the South Whidbey Fault, however, the city has mapped liquefaction zones as depicted in the Seismic Liquefaction. It is not possible to predict the exact date, duration or magnitude of an earthquake. Much of the historic downtown area is comprised of unreinforced masonry (URM) buildings that are vulnerable to collapse and present a life safety hazard. Most of Renton's	The city was damaged in 1965 from the 6.7 Puget Sound quake, with severe damage to the Boeing plant. The most recent earthquake that affected the City was the Nisqually Quake in 2001. If there was another earthquake of this magnitude, all Renton School District buildings may be at risk.

	<p>faults may generate smaller earthquakes, and faults further away can still cause damage.</p>	<p>commercial development, including the historic downtown, is built on soils with high liquefaction risk. Many homes were built before the seismic code was changed and acknowledge the seismic risk of the area, which will lead to extensive damage to many structures.</p>	
Flood	<p>The latest surveys show that Renton has about 1% of a chance within the high-risk areas. Much of Renton's commercial and institutional development is located within the floodplain of either the Green River or Cedar River, and there is a considerable amount of residential development within the Cedar River floodplain. 6.35% of the total land area of the city is within the Special Flood Hazard Area. The city has good floodplain management regulations and has limited development, however, there are many structures already present in the floodplain.</p>	<p>With no structures in the City shown in the Repetitive Loss Report, structures within floodplains were analyzed. The floodplain boundaries within the City are shown in the Floodplain Map. Renton is near or at the end of the drainage basin for the Green River and the Cedar River. As a relatively low-lying area, it becomes the collector for floodwaters along these rivers. The Green River Valley is a thriving commercial and industrial area. The annual risk of a catastrophic flood in that area is 1:140. The area around the Cedar River is primarily developed as residential. There are schools and several senior residential</p>	<p>The most recent event of flooding in Renton occurred in 2007. However, the risk to our Renton school district is mostly within our schools in the low lands, such as Renton High School and Sartor Elementary. Most of the other school buildings would be affected due to road closures and canceled bus routes, so students wouldn't be able to pick up and transported to school. The flooding risk would actually be more concerning to a few of our administrative buildings. (The Warehouse, Transportation Building and, The Nutrition Service building,)</p>

		communities in the 100-year floodplain, as well as the city's largest employer. The historic downtown area is located within the 500-year flood plain.	
Landslide	Most of the possible landslide areas at risk are located within the outer boundaries of our district in the valley by the Cedar River. However, areas of steep slopes and high erosion hazard can be found throughout the city. As a former coal-mining town, many abandoned coal mines crisscross the Talbot-Hill area of the district.	Over the past 10 years, the following neighborhood areas experienced landslides: In Renton, a sinkhole opened in July of 2018 near Talbot Hill Elementary which caused traffic changes around the school. The sinkhole is located along South 23rd Street. The sinkhole is likely due to an abandoned coal mine located in the area. The federal Office of Surface Mines repaired this damage in August of 2019. The school itself is not in danger. When Talbot Hill was built in 1997, the school district verified the building would sit outside of the areas impacted by the mines. The parking lot and surrounding grounds have been impacted because of their proximity to the abandoned mines. Parent and bus pick-up/ drop-off locations have been significantly impacted.	Landslides have been a moderate problem in the Renton area, primarily near the Cedar River which follows the Maple Valley highway. Landslides have been known to occur during the rainy season. In 2001, the ground motion from the Nisqually earthquake triggered a landslide on the north side of the Cedar River near the Maplewood Golf Course.

Severe Weather	<p>Severe weather in Renton can happen at any time of year but usually occurs between October and April. Severe weather can include unseasonable rain, snow, ice, extreme cold, and high winds. High wind events in Renton are fairly common and are usually experienced as part of a winter weather pattern.</p>	<p>The National Weather Service can forecast and track severe weather events that may be likely to produce severe high winds, hail, and lightning. Tracking where these related hazards form and how rapidly they will move through aids in minimizing the impact on the district.</p> <p>In the event an emergency response is necessary, the District will work with the Renton Police Department and the Renton Fire Department to respond to safety emergencies. Additionally, the Renton School District Central Security Staff with the support of district maintenance staff will respond in case of power outages or extreme heat or flooding. All safety protocols would be applied to ensure the safety of students and staff as a top priority. In extreme cases, reunification procedures would be activated to reunite students with families.</p>	<p>The most recent event happened in February 2019 when a series of winter storms produced significant amounts of snow over an extended number of days.</p> <p>Due to unsafe road conditions and potential power outages, school closures may be necessary. Frequent monitoring of road and weather conditions is essential to making decisions to open or close schools. Also, if there was a heavy rain due to inclement weather this would affect Tally High School and Lindbergh High School. Tally is built in a valley, which was formally a river bed. Lindbergh has very poor ground soil, so the drainage is a huge concern. Both locations would be susceptible to rain accumulation.</p>

Tsunami	Renton School District is not at Risk of a Tsunami.	None	None
Volcano	Washington is home to five active volcanoes, which can pose a variety of risks to the communities around them. Renton will likely not be directly impacted by lava, pyroclastic flows, or lahars, but could still face disruption from volcanic ash release.	Renton is not at a direct risk for volcano activity. The largest impact would be ash-fall.	Since all of Renton School District falls within the ash-fall zone, preparations need to be made to ensure safe evacuation and reunification after an event. Agriculture can also be affected by volcanic ash-fall. Like airborne particles from dust storms, forest fires, and air pollution, volcanic ash poses a health risk, especially to children, the elderly, and people with cardiac or respiratory conditions, such as asthma, chronic bronchitis, and emphysema.
Wildfire	A fire needs three elements in the right combination to ignite and grow – a heat source, fuel, and oxygen. How a fire behaves primarily depends on the characteristics of available fuel, weather conditions, and terrain. Weather plays a role in the form of wind, low precipitation, and lightening. The terrain is an additional factor, as the topography of a region or local area influences the amount and moisture of available fuel. Other elements like barriers and land	King County, like other places in our country, experiences frequent fires. About one-third of all fires occur in residential properties; one-third involve natural vegetation; and the remaining third involve vehicles, outside equipment and storage, and other locations. Most fires are human-caused and are preventable. Only a small percentage of fires are caused by natural forces such as lightning. There is no data of wildfires that have occurred in Renton. Typically any wildfires are contained rapidly and remain small so that each has a minimal impact. The Renton Regional Fire	The NCDC does not list any wildfires or forest fires for Renton. However, wildfire would be a hazard to many of the Renton School District Properties, especially any properties located to heavily wooded areas. Also, many of our structures are older and are more susceptible to any fire hazards and would potentially catch fire easier and burn down at a higher rate.

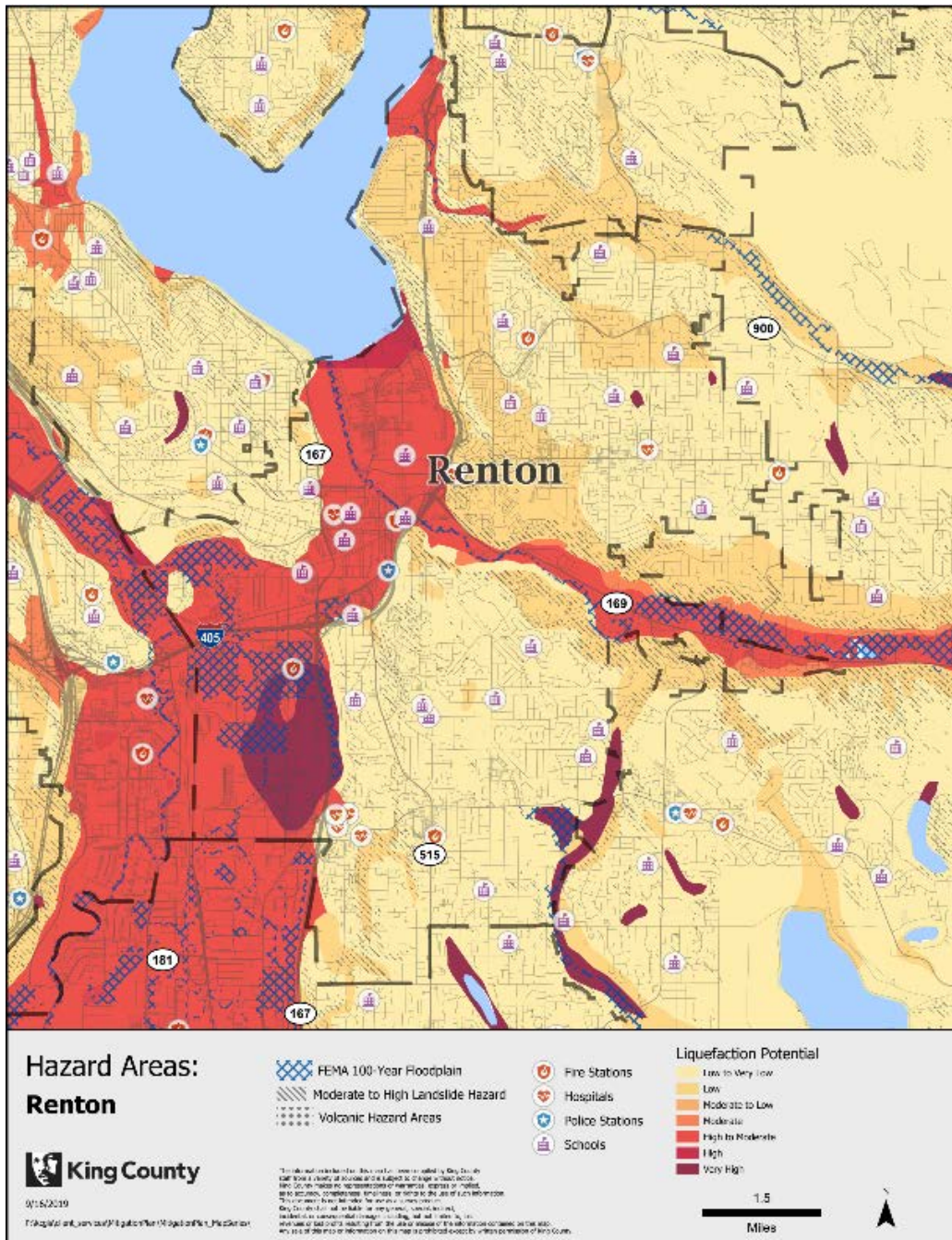
	<p>elevation also need to be considered as highways and lakes can affect the spread of fire, as can an uphill/ downhill orientation, as fire spreads more easily as it moves uphill. In addition to natural conditions for fire viability, humans also play a role. For these reasons, fire hazards are a very real risk for Renton residents and businesses and must be vigilantly prepared for and mitigated against in efforts to keep our region and surrounding counties and communities safer.</p>	<p>Marshal is responsible for performing Fire Plans Reviews within the City of Renton. A Fire Plans Review is the process of reviewing construction plans to ensure that new construction meets fire and life safety standards set forth by the NFPA, the State of Washington, and the City. The review helps determine whether a building's planned protective systems are adequate for the hazard anticipated as its occupancy, and that all local requirements are met from day one. These preventive services map out the best fire protection for each building's unique construction and occupancy, helping keep our community safe from the start.</p>	
Coal Mines and Liquefaction	<p>Abandoned coal tunnels and mine shafts run under Black Diamond, in south-east King County as well as in Issaquah, Renton, Bellingham and Newcastle on the Eastside.</p>	<p>According to the Department of Natural Resources, the most damage in the area was caused by a collapsing coal tunnel in Newcastle, opening up beneath a home off the Coal Creek Parkway in the 1980s.</p>	<p>In July of 2019, a sinkhole supporting a 60-inch water main opened over the summer near Talbot Hill Elementary. The sinkhole is located along South 23rd Street. The sinkhole is likely due to an abandoned coal mine located in the area. The Federal Office of Surface Mines repaired this damage in August of 2019. The school itself is not in danger. When Talbot Hill was built in 1997, the school district verified the building would sit outside of the areas impacted by mines. The parking lot and surrounding grounds have been impacted because of their proximity</p>

			to the abandoned. Sartori is also built on what unstable ground and is vulnerable to liquefaction.
Cyber Attack	Like other governments and businesses across the nation, Renton School District relies heavily on computers and networks to conduct its normal business and is therefore susceptible to a cyberattack.	Cyber-attacks against computer systems could potentially shut down the radio, telephone, and computer networks used to control and manage City or regional services, potentially resulting in loss of those services or the inability to properly dispatch public safety and other personnel to the scenes of crimes or physical terrorist attacks. Mitigation efforts against the threat of cyber-terrorism is being addressed in several ways, one of which is incorporating plans that outline response procedures and creating redundant data sites.	Renton School District has not had any reports or incidents of cyber-terrorism but is just as susceptible to it like any other school district since the majority of our communications are sent out via email. A cyber-attack would affect 100% of the Renton School District.
Dam Failure	Dams are manmade structures that are designed to hold backwater. You might picture the giant masonry Hoover Dam when we talk about dams, but only one dam, the Cedar Falls Masonry Dam, isn't an	King County has nine high hazard dams that would cause widespread flooding if they were to fail. When dams fail, a large flood wave travels rapidly that can cause loss of life and property. King County has eighty-seven smaller dams that pose a	In the Green River Valley, hundreds of millions of dollars of real property would be destroyed in Renton, primarily businesses, causing them to permanently close their doors, with a loss of revenue for the city. A Chester Morse Dam failure on the Cedar River would destroy hundreds of millions of dollars of mostly residential property, leaving many homeless. This would impact the Renton School District greatly due to the

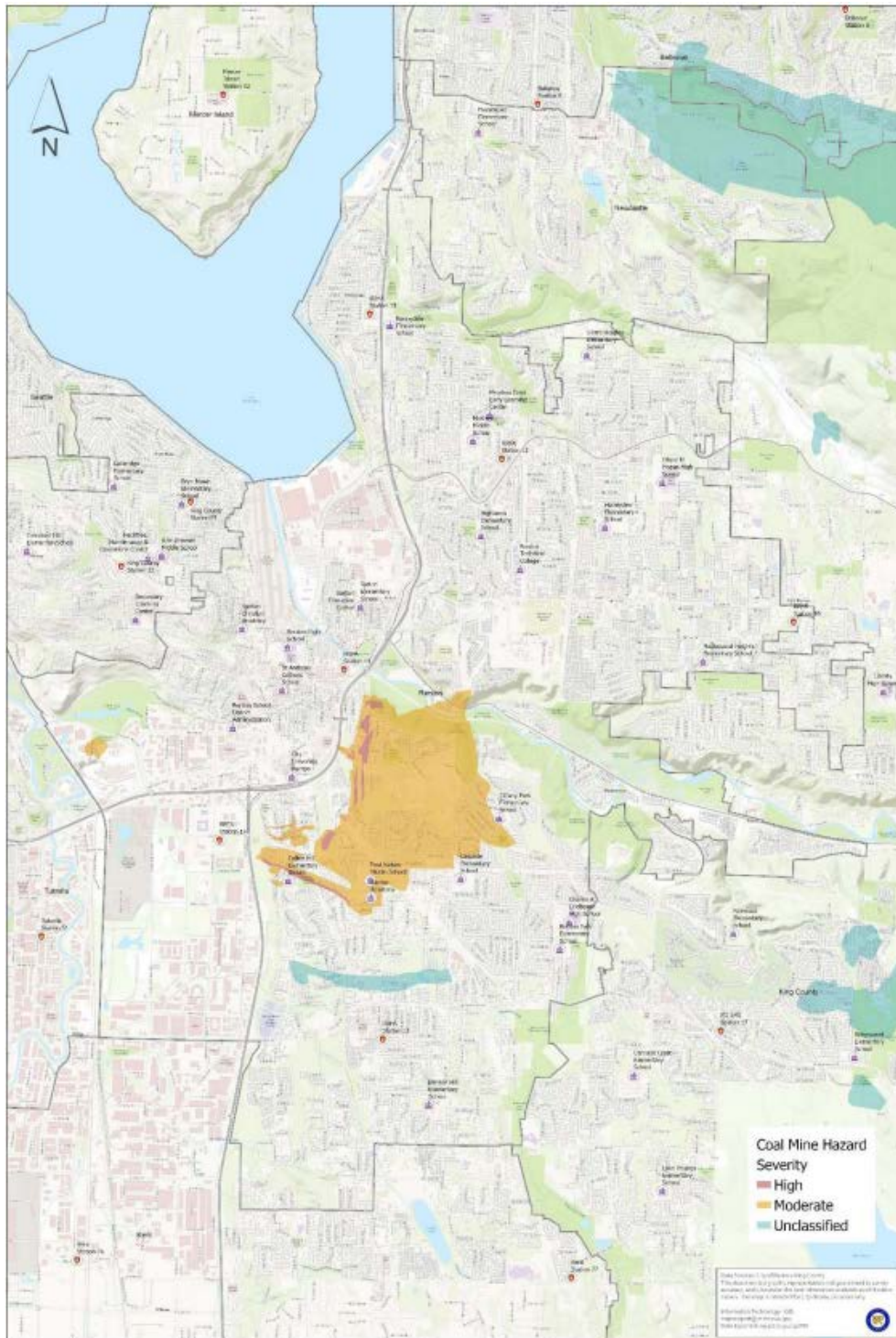
	<p>earthen dam. Earthen dams are composed of impermeable materials at their core, reinforced with other natural materials to hold backwater. The 127 dams in the county serve many beneficial purposes. Most of which protect our communities from regular flooding, others serve as a source of clean drinking water, while only a few produce electricity for our cities. There are two major dams on the Green River and Cedar River respectively, and numerous levees along both rivers. A failure of either a dam or a levee would cause severe flooding not seen since the two dams were built. A dam failure with a full pool scenario will likely be much more severe than a typical Flooding scenario.</p>	<p>similar threat. Renton is near or at the end of the drainage basin for the Green River and the Cedar River. As a relatively low-lying area, it becomes the collector for floodwaters along those rivers. The Green River Valley is a thriving commercial and industrial area. The area around the Cedar River is primarily developed as residential. There are schools and several senior residential communities in the floodplain. There is great potential for loss of life for those not able to evacuate ahead of the floodwaters.</p>	<p>potential loss of many residential homes and the families that live in them and go to school within the Renton School District.</p>
Hazardous Materials Incident	<p>There are some risks of a hazardous materials incident to a few buildings within the Renton School District.</p>	<p>We have a few buildings located near or around the 405 freeway or near Boeing Airport.</p>	<p>Renton High is vulnerable due to it's proximity to the Renton Regional Airport. Renton High School is listed as a backup landing path and would require the use of our field in case of an emergency. In this scenario, Renton High School would be highly susceptible to gas spilling or fire risk. In 2005, an</p>

			airplane crashed into Kenneydale Elementary School.
Public Health Emergency	Measles cases have increased over the past several years.	In a nearby neighboring school district, 3 students have been diagnosed with measles. Renton School District was immediately notified of the outbreak.	Renton School District reviewed vaccination charts to ensure our staff and students have current vaccinations. A measles outbreak could affect a large number of staff and students.
Structure Fire	Within the Renton School District, there are 26 schools and 3 administrative buildings that are all vulnerable to fire risk.	There are several fuel lines throughout the Renton School District boundaries.	While fire protection measures are in place as required by fire code, in the event of a fire, Renton School District buildings could sustain significant damage and may require school cancellation(s). This risk is especially high for Sierra Heights do to the Olympic Gas Pipeline running through the field.

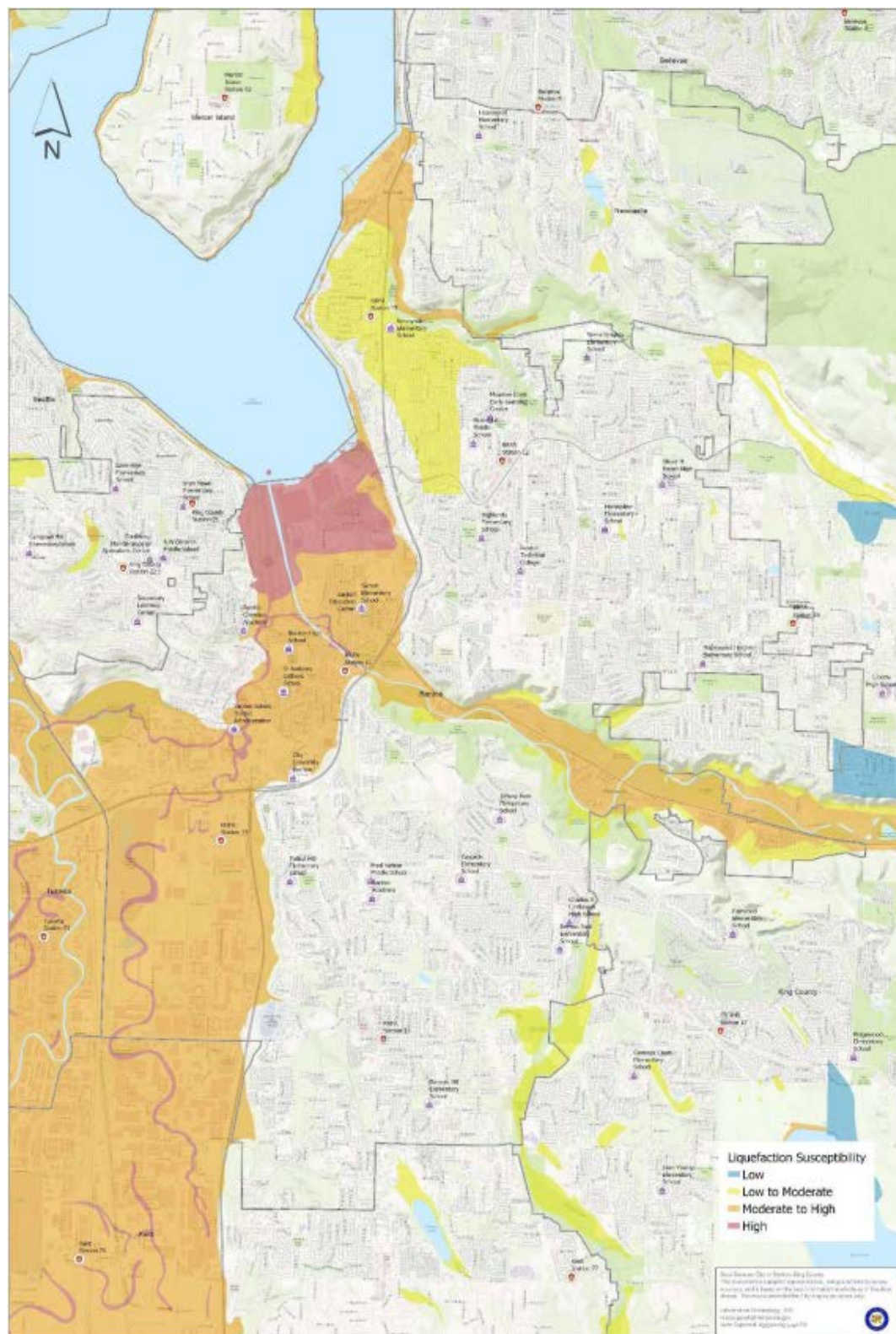
Hazard and Asset Overview Map(s) – City Of Renton Hazard Area

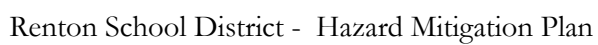


Hazard and Asset Overview Map(s) – Coal Mine Hazards

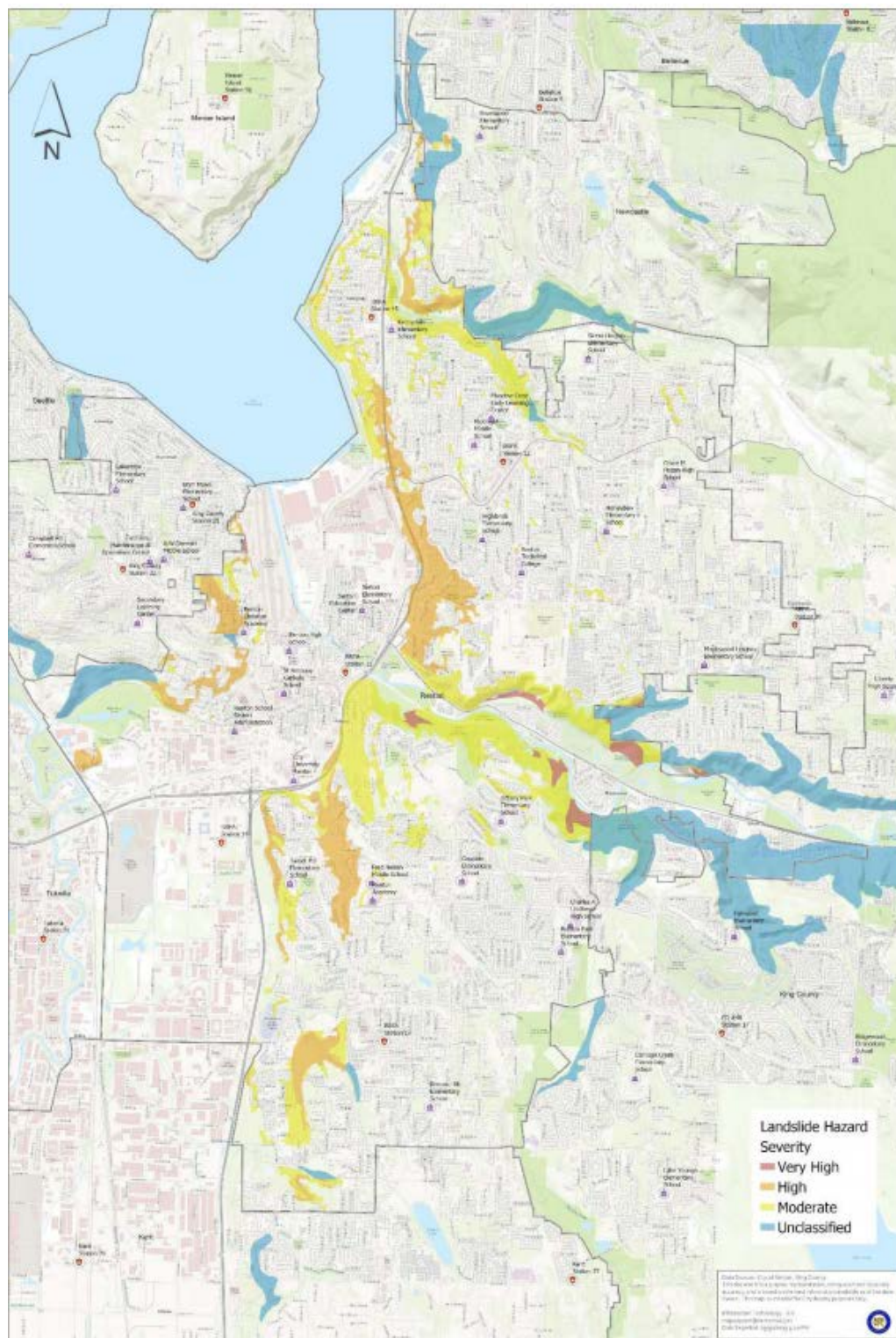


Hazard and Asset Overview Map(s) – Liquefaction Susceptibility





Hazard and Asset Overview Map(s) – Flood Hazard



Renton School District finance team is very thorough and take a long-range view in all financial planning including loans, bonds, or rate increases.

Assets at Risk

ASSET	VALUE	HAZARD SUMMARY	VULNERABILITY SUMMARY	IMPACT SUMMARY
Warehouse	\$4,943,880	Hazardous Materials – High Risk: As the main storage for the entire district food storage, if any hazardous material were to expose the food. This would be a major threat to our entire district.	Built 2001	Staff population: 5
Benson Hill	\$17,896,245		Built 2005	Students population: 575 Staff population: 30
Bryn Mawr	\$13,289,403		School built 1995, 2 portables built in 2013	Students population: 489 Staff population: 28
Campbell Hill	\$15,354,824		School built 2002, 2 portables built in 2014	Student population: 482 Staff population: 33
Cascade	\$15,898,059		School built 1995, 1 portable built 1989, 1 portable built 2005, 1 double portable built 2005.	Student population: 548 Staff population 34
Dimmitt	\$30,076,100		School built 2000, 2 portables built 2002, 3 portables built 2010, 1 double portable built 2004	Student population: 939 Staff population: 48
FOMC	\$5,646,960		Built 2007	Staff Population: 121
Hazelwood	\$17,891,065		School built 2005, 2 portables built 2014	Student population: 615, Staff population: 34
Hazen	\$90,033,625		Built 1999	Student population: 1624 Staff population: 67
Highlands	\$15,900,000		Built 2003	Student population: 572 Staff population: 33
Honeydew	\$15,191,100		School built 2009,	Student population: 537

			2 portables built 2005, 2 portables built 2013	Staff population: 34
Kennydale	\$17,269,785	Hazardous Materials Incident – High Risk: Due to the locations of this elementary school being located near the interstate and in the flight pathway. It is more susceptible to hazardous materials and has already experienced two known hazard material contaminations.	Built 2006	Student population: 614 Staff population: 33
KEC	\$12,584,000	Flood– Medium Risk: Due to this location being located in the 500 flood plane. This main administration building is susceptible to flood hazards. Cyber Incident – High Risk: Considering this is the hub of the entire district and none cyber attached would be detrimental to the entire district.	Built 1999	Staff population: 160
Lakeridge	\$14,571,470		School built 1995, 1 double portable built 2004, 2 double portables built 2014	Student population: 418 Staff population: 30
Lindbergh	\$69,984,150	Flood– Medium Risk: This school is at risk of water accumulation due to poor drainage. The soil doesn't allow the water to drain well and has caused none flooding within the first floor of the building.	School and pool built 1971, 1 portable built 1966, 3 portables built 2002, 1 double portable built 2005	Student population: 1273 Staff population: 53
Transportation	\$3,643,740	Flood and Severe Weather Incident – High Risk: The transportation is the central hub for any schedule transportation for the student base. In the event of any severe	Built 2009	Staff population: 150

		weather or flooding incident. This would hugely impact the ability to pick up and maintain the safety for each student affected.		
Maplewood Heights	\$15,435,900		School built 1997, 2 portables built 1966, 1 portable built 1989, 1 portable built 2002, 1 portable built 2009	Student population: 717 Staff population: 38
McKnight	\$34,927,420		School built 1996, 1 double portable built 2000, 1 double portable built 2003, 2 portables built 2004	Student population: 1270 Staff population: 58
Meadow Crest	\$18,906,800		Built 2013	Student population 574 Staff population 106
Nelsen	\$34,259,952		School built 2000, 4 double portables built 2002	Student population: 545 Staff population: 34
Renton Academy/HOME	\$8,796,530		School built 1970, 4 portables built 1990, HOME classroom built 1970	Student population: 43 Staff population: 7 Home Student population: 118
Renton High	\$79,260,650	Flooding Incident – High Risk: This building is at high risk to do being located near Lake Washington as well as being located in the Renton low lands. Hazardous Materials Incident– High Risk: This building is located near the Boeing airport and it at high risk due to the property being part of the emergency landing zone for Boeing. Fire Hazard – Medium Risk: This building is one of the oldest buildings in the City of Renton. Due to the age of the structure it does make it more susceptible to a fire hazard.	Built 1932	Student population: 1600 Staff population: 62
Renton Stadium	\$16,135,611		Stadium built 2010	Staff population: 3

Renton Park	\$17,478,075		Built 2006	Student population: 467 Staff population: 29
Risdon	\$44,389,150		Built 2017	Student population: 910 Staff population: 91
Sartori	\$26,878,950	Liquefaction and Earthquake – High Risk: This building is built on very unstable soil. In case of an earthquake, this could create a very high risk to the building structure.	Built 2018	Student population: 530 Staff population: 76
Tally	\$19,478,525		Built 2012	Student population: 275 Staff population: 40
Sierra Heights	\$14,845,480	Structural Fire – High Risk: Olympic Gas Pipeline runs through the field of Sierra Heights so is at high risk of a structural fire.	School built 1996, 2 portables built 2002, 1 portable built 2004, 1 double portable built 2005	Student population: 616 Staff population: 34
Talbot Hill	\$15,597,460	Liquefaction, Earthquake and Coal Mine – High Risk: This building is built on very unstable soil due to the coal mines. In case of an earthquake, this could create a very high risk to the building structure. This building is currently experiencing many sinkholes due to sinkholes, which is creating a huge impact to the property parking surfaces.	School built 1998, 2 portables built 2002, 1 built 2003	Student population 472, Staff population 29
Tiffany Park	\$15,714,873		School built 2001, 1 double portable built 2013	Student Population 441, Staff population 29

Plan Update Process

To convene the planning team, Renton School District will mirror or partner with City plans. The City of Renton expanded the existing Emergency Management Group's membership, which has representation from each department and the Renton Regional Fire Authority. The invitation included neighboring water utilities and additional stakeholders and subject matter experts who could contribute to the plan. The planning process began with some staff attending the King County Hazard Mitigation Plan kickoff meeting and workshops. The planning team met twice in joint work sessions to review assets and infrastructure, to determine threats and assess risk, and to identify mitigation solutions to reduce those risks. Planning team members then worked outside of the group session to develop the mitigation strategies that are included in this plan revision.

Renton School District Planning Team

NAME	TITLE	ORGANIZATION	CONTRIBUTION
Dr. Fred Maiocco	Chief Financial Officer/ Assistant Superintendent of Finance & Support Services	Renton School District	Strategy discussions, worksheets, share information, plan review
Susanne Whitlock	Chief of Support Services	Renton School District	Strategy discussions, worksheets, share information, plan review
Randy Matheson	Executive Director of Community relations	Renton School District	Community Relations Strategy and discussion
Kayla Steckler	Confidential Assistant to Executive Director of Community relations	Renton School District	Community Relations Strategy and discussion
Brantley Bain	Director of Capital Planning and Construction	Renton School District	Strategy discussions, worksheets, share information, plan review
Matt Feldmeyer	Director of Capital Projects	Renton School District	Strategy discussions, worksheets, share information, plan review
Todd Simanton	Director of Maintenance and Operations	Renton School District	Strategy discussions, worksheets, share information, plan review
Stewart Shusterman	Senior Project Manager	Construction Project Manager	Strategy discussions, worksheets, share information, plan review
Alisha Smothers	Administrative Assistant to Susie Whitlock	Renton School District	Strategy discussions, worksheets, share information, plan review
Laska Whiteaker	Administrative Assistant to Chief Financial Officer/ Assistant Superintendent of Finance & Support Services	Renton School District	Worksheet Review

Planned Update Timeline

PLANNING ACTIVITY	DATE	SUMMARY	ATTENDEES
Hazard Mitigation Risk Assessments	8/15/2019	Joint development of risk assessments	Director of Safety and Security, Capital Project Director of Planning, Chief of Support Services
Hazard Mitigation Annex Kick-Off	9/10/2019	Orientation to planning process and partner expectations	Director of Safety and Security, Capital Project Director of Planning, Chief of Support Services
Hazard Mitigation Planning Support Meeting	10/17/2019	Guidance on plan development, organization, and narratives	Director of Safety and Security, Capital Project Director of Planning, Chief of Support Services
Renton School District Planning Group Meeting	10/30/2019	Guidance on development of strategy worksheets and location hazard maps	Chief of Support Services and Administrative Assistant
Renton School District Planning Group Meeting	11/5/2019	Guidance on development of strategy worksheets and location hazard maps	Chief of Support Services and Administrative Assistant
Hazard Planning and Review with Hazard Mitigation Strategist	11/8/2019	Renton School District Review of plan	King County - Hazard Mitigation Strategist
Renton School District Planning Group Meeting	11/8/2019	Guidance on development of strategy worksheets and location hazard maps	Chief of Support Services, Support Services Administrative Assistant, Sr Project Manager of Capital Projects and Planning.
Public Outreach Review	12/3/2019	Guidance and Recommendation on Public outreach plans	Chief of Support Services and Support Service Administrative Assistant, Executive Director of Public Relations, and Confidential Assistant to Executive Director of Public Relations.
Renton School District Planning Group Meeting	12/6/2019	Guidance on plan development, organization, and narratives	Capital Project Director of Planning, Chief of Support Services, and Executive Assistant to Assistant Superintendent of Accounting and Support Services.
Renton School District Planning Group Meeting	12/12/2019	Guidance on plan development, organization, and narratives	Chief of Support Services and Support Service Administrative Assistant

Renton School District Planning Group Meeting	12/13/2019	Guidance on plan development, organization, and narratives	Capital Project Director of Planning, Chief of Support Services, and Executive Assistant to Assistant Superintendent of Accounting and Support Services.
Hazard Planning and Review with Hazard Mitigation Strategist	12/16/2019	Renton School District Review of plan	King County - Hazard Mitigation Strategist
Renton School District Planning Group Meeting	12/17/2019	Renton School District Public Relations Review	Assistant Superintendent, Executive Assistant to Assistant Superintendent, Chief of Support Services, Support Service Administrative Assistant
Renton School District Planning Group Meeting and Community Relations Team.	12/18/2019	Renton School District Review of plan	Support Service Administrative Assistant, Community Relations Confidential Assistant
Renton School District Planning Group Meeting	12/18/2019	Renton School District Review of plan – final review.	Chief of Support Services, Support Service Administrative Assistant, Community Relations Confidential Assistant

Public Outreach

The following is the list of the District's Outreach communications as they relate to the Hazard Mitigation for the Renton School District.

Public Outreach Events

EVENT	DATE	SUMMARY	ATTENDEES
Renton School District Public Website Posting	12/6/2019	This was a public communication to invite any of our families, friends, and community to hear more about our Hazard Mitigation Plan and reach out with any questions.	Alisha Smothers Kayla Steckler
Renton School District Facebook Posting	12/13/2019	This was a public Facebook communication to invite our families and community to review our draft Hazard Mitigation Plan and provide feedback.	Kayla Steckler Randy Matheson
Renton School District Board Meeting	1/22/2019	The District has a scheduled Board Meeting to present and review any questions regarding the purposed Hazard Mitigation Plan following the board meeting.	Board Members Susie Whitlock

Public Outreach Effort

Renton School District Public Outreach 1 – 12/6/2019

HAZARD MITIGATION PLAN



The 2019 Hazard Mitigation Plan for the Renton School District covers each of the major natural hazards that pose risks to the District. Mitigation simply means actions that reduce the potential for negative impacts from future disasters. That is, mitigation actions reduce future damages, losses, and casualties. The Plan is a living document, which will be reviewed and updated periodically. Comments, suggestions, corrections, and additions are enthusiastically encouraged from all interested parties and may be sent to the [Hazard Mitigation Plan Committee](#). We also invite any interested parties to learn more about the Hazard Mitigation Plan at the Renton School District Board Meeting scheduled January 22nd, at which time there will be an opportunity to present any questions or concerns following the board meeting.

Effective hazard mitigation planning helps the District deal with natural and manmade hazards realistically and rationally. That is, to help identify specific locations within the District where the level of risk from one or more hazards may be unacceptably high and then finding cost effective ways to reduce such risk. Mitigation planning strikes a pragmatic middle ground between unwisely ignoring the potential for major hazard events on one hand and unnecessarily over reacting to the potential for disasters on the other hand. This mitigation plan is an educational and planning document, not a regulatory document.

This Plan meets the Federal Emergency Management Agency's (FEMA) planning requirements by addressing hazards, vulnerability and risk. Adoption of a mitigation plan is required for agencies to remain eligible for future FEMA mitigation grants and funding.

The City Of Renton Hazard Mitigation Plan is available for viewing by the link below. The Hazard Mitigation Plan for Renton School District is under construction and will be available to view December 20, 2019.

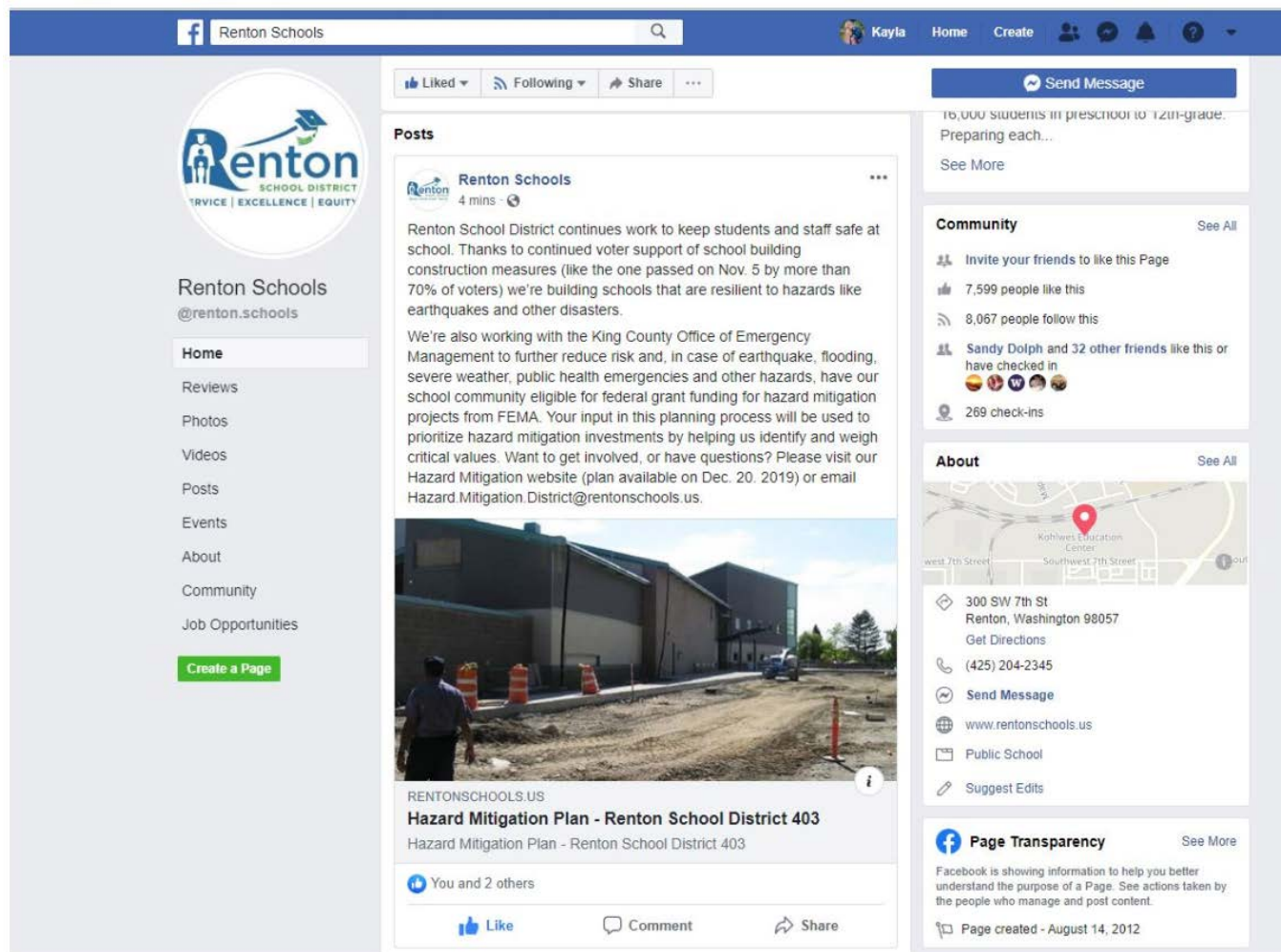
Hazard Mitigation Plan Committee
Renton School School District

[2019 City of Renton Hazard Mitigation Plan](#)

[SUPPORT SERVICE HOME PAGE](#)

Public Outreach Effort

Renton School District Public Outreach 2 – 12/13/2019



The screenshot shows the Facebook page for Renton Schools. The page header includes the search bar, navigation links (Home, Create), and user avatars. The left sidebar contains the page profile, navigation menu (Home, Reviews, Photos, Videos, Posts, Events, About, Community, Job Opportunities), and a 'Create a Page' button. The main content area features a post from Renton Schools, dated 4 minutes ago, about the Hazard Mitigation Plan for Renton School District 403. The post includes text about school safety and a photo of a school building under construction. The right sidebar shows a 'Send Message' button, a snippet of a post about 16,000 students, a 'Community' section with like/follow counts, an 'About' section with location and contact information, and a 'Page Transparency' section.

Renton Schools
@renton.schools

Home
Reviews
Photos
Videos
Posts
Events
About
Community
Job Opportunities
[Create a Page](#)

Posts

Renton Schools
4 mins · 🌐

Renton School District continues work to keep students and staff safe at school. Thanks to continued voter support of school building construction measures (like the one passed on Nov. 5 by more than 70% of voters) we're building schools that are resilient to hazards like earthquakes and other disasters.

We're also working with the King County Office of Emergency Management to further reduce risk and, in case of earthquake, flooding, severe weather, public health emergencies and other hazards, have our school community eligible for federal grant funding for hazard mitigation projects from FEMA. Your input in this planning process will be used to prioritize hazard mitigation investments by helping us identify and weigh critical values. Want to get involved, or have questions? Please visit our Hazard Mitigation website (plan available on Dec. 20, 2019) or email Hazard.Mitigation.District@rentonschools.us.

RENTONSCHOOLS.US
Hazard Mitigation Plan - Renton School District 403
Hazard Mitigation Plan - Renton School District 403

You and 2 others

[Like](#) [Comment](#) [Share](#)


Send Message

16,000 students in preschool to 12th-grade. Preparing each...
[See More](#)

Community [See All](#)

[Invite your friends to like this Page](#)
7,599 people like this
8,067 people follow this
Sandy Dolph and 32 other friends like this or have checked in
269 check-ins

About [See All](#)


300 SW 7th St
Renton, Washington 98057
[Get Directions](#)
(425) 204-2345
[Send Message](#)
[www.rentonschools.us](#)
Public School
[Suggest Edits](#)

Page Transparency [See More](#)

Facebook is showing information to help you better understand the purpose of a Page. See actions taken by the people who manage and post content.
Page created - August 14, 2012

Public Outreach Effort

Renton School District Public Outreach 3 – 1/22/2020



SUPPORT SERVICES

DATE: December 16, 2019

TO: Dr. Damien Pattenaude, Superintendent

FROM: Susie Whitlock, Chief of Support Services

FOR BOARD DATE: January 22, 2020

AGENDA ITEM: Hazard Mitigation Public Outreach

In partnership with King County, Renton School District is developing a Hazard Mitigation Plan. This plan looks at natural and human-caused hazards that threaten the district and proposes strategies to reduce risk and build resilience. The approved plan provides eligibility for the district in the new FEMA grant program as well as a proposed OSPI capital program. The plan consists of a review of primary hazards facing the district, development of district hazard mitigation strategies, and identification of funding to implement mitigation projects including FEMA's Building Resilient Infrastructure in Communities program and proposed OSPI new capital funding opportunities. The final Renton School District Hazard Mitigation Plan will be provided to the Board of Directors for the final review.

DISTRICT GOALS:

Not Applicable

BUDGET IMPLICATION:

No additional budget capacity required

RECOMMENDATION:

Recommend Board approve the communication of the draft Hazard Mitigation plan to the public for input.

Attachments: Purposed Hazard Mitigation Plan - Draft

I have reviewed and recommend approval of this request:

Dr. Fred Maiocco
Assistant Superintendent of Finance and Operations

Date

SERVICE | EXCELLENCE | EQUITY

Mission: Each student graduating with options and prepared to fully participate in our democracy
7812 S 124th Street, Seattle, Washington 98178-4830 | p.425.204.4403 | f.425.204.4476
www.rentonschools.us

Renton School District Hazard Mitigation Program

Hazard mitigation strategies were developed through a two-step process. The City of Renton met with an internal planning team, an expansion of the existing Emergency Management Group that meets monthly in the city, to identify a comprehensive range of mitigation strategies. These strategies were then prioritized using a process established at the county level and documented in the base plan.

Plan Monitoring, Implementation, and Future Updates

King County leads the mitigation plan monitoring and update process and schedules the annual plan check-ins and bi-annual mitigation strategy updates. Updates on mitigation projects are solicited by the county for inclusion in the countywide annual report. As part of leading a countywide planning effort, King County Emergency Management will send to Renton any federal notices of funding opportunity for the Hazard Mitigation Assistance Grant Program. Proposals from partners will be assessed according to the prioritization process identified in this plan and the county will, where possible, support those partners submitting grant proposals. This will be a key strategy to implement the plan. The next plan update is expected to be due in April 2025. All jurisdictions will submit letters of intent by 2023, at least two years prior to plan expiration. The county will lead the next regional planning effort, beginning at least 18 months before the expiration of the 2020 plan.

Continued Public Participation

King County and its partner cities already maintain substantial public outreach capabilities, focusing on personal preparedness and education. Information on ongoing progress in implementing the hazard mitigation plan will be integrated into public outreach efforts. This will provide King County residents, already engaged in personal preparedness efforts, with context and the opportunity to provide feedback on the county's progress and priorities in large-scale mitigation. In the vertical integration of risk-reduction activities from personal to local to state and federal, it is important the public understand how its activities support and are supported by, larger-scale efforts.

The outreach and mitigation teams will also continue to work with media and other agency partners to publicize mitigation success stories and help explain how vulnerabilities are being fixed. When possible, public tours of mitigation projects will be organized to allow community members to see successful mitigation in action.

Hazard Mitigation Authorities, Responsibilities, and Capabilities

Renton will be focusing on educational equality and personal preparedness. Information on ongoing progress in implementing the hazard mitigation plan will be integrated and presented to into the public. This will provide

Renton School District Overall Plan Goals

1. Access to Affordable, Healthy Food
2. Access to Health and Human Services
4. Access to Safe and Efficient Transportation
5. Affordable, Safe, Quality Housing
6. Community and Public Safety
7. Early Childhood Development
8. Economic Development
10. Equity in Government Practices
11. Family Wage Jobs and Job Training
12. Healthy Built and Natural Environments
13. Quality in Education
14. Strong, Vibrant Community

that

Renton School District residents a way to engage in personal preparedness efforts, with context and the opportunity to provide feedback on the Renton School District Hazard Mitigation Strategies. It is important that the public understand how its activities support and are supported by, larger-scale efforts.

The outreach and mitigation teams will also continue to work with media and other agency partners to publicize mitigation success stories and help explain how vulnerabilities are being fixed. When possible, opportunities to listen to the Hazard Mitigation Plan will be made to the public by attending our Renton School District Board.

Plans

PLAN TITLE	RESPONSIBLE AGENCY	POINT OF CONTACT	RELATIONSHIP TO HAZARD MITIGATION PLAN
District Standard and Policy over District Planning improvements and implementation	Superintendent	Damien Pattenau	The long-range guiding policy document for all land use and development regulations in Renton School District
District Plan Improvement and implementation	Chief Financial Officer/Assistant Superintendent of Finance & Support Services	Fred Maiocco	The long-range guiding policy document for all land use and development regulations in Renton School District
Comprehensive Plan	Support Services Department	Susanne Whitlock	Identifies and prioritizes large scale projects
Building Codes	Capital Projects Sr Project Manager	Matt Feldmeyer and Stewart Shusterman	Building code development depends on the same understanding of hazards
Comprehensive Emergency Management Plan	Director of Safety and Security	Jamie Siddell	The Hazard Mitigation Plan provides the risk profiles
Capital Improvement Strategy	Director of Capital Planning and Construction	Brantley Bain	The Hazard Mitigation Plan provides the risk profiles
Cyber Comprehensive Management Plan	CTO of Technology Services	Ellen Dorr	The Hazard Mitigation Plan provides the risk profiles
Building Maintenance and planning	Director of Maintenance and Operations	Todd Simanton	The Hazard Mitigation Plan provides the risk profiles
Building Sanitization and cleanliness	Custodial Manager	Chris Dillon	The Hazard Mitigation Plan provides the risk profiles
Public Relations Department	Public Relations Director	Randy Matheson	Public education and engagement, planning process oversight

Hazard Mitigation Strategies

The following strategies emerged as the best mitigation focus for the City of Renton over the next five years, with some projects, such as the Cedar River Gravel Removal Project, in a monitoring status to determine longer-range mitigation needs 10 years out or more.

2020 Hazard Mitigation Strategies

STRATEGY	LEAD AGENCY/POC	TIMELINE	PRIORITY
Airport Earthquake and Seismic Mitigation	Renton School District Support Services	Ongoing	Medium
Multi-Hazard	Renton School District Support Services	Ongoing	Medium
Landslide	Renton School District Support Services	Ongoing	High

Hazard Mitigation Strategy – Earthquake and Seismic Mitigation

Lead POC	Partner Points of Contact	Hazards Mitigated / Goals Addressed	Funding Sources and Estimated Costs
Susanne Whitlock, Chief Of Support Services	City Of Renton King County King County Emergency Management City of Renton Emergency Management Renton Regional Fire	Earthquake	District or Grants – Cost to be determined.
Strategy Vision/Objective Review and update, as warranted, building data for seismic risk assessments in the OSPI ICOS PDM database. Enhance emergency planning for earthquakes including duck and cover and evacuation drills.			
Mitigation Strategy Renton School District would need to review existing district data and, as needed, conduct seismic surveys to determine current status and make a recommendation for proposed upgrades. This would include evaluation of nonstructural seismic vulnerabilities in the District's buildings from building elements and contents that pose significant life safety risk (falling hazards) and mitigate by bracing, anchoring or replacing identified high-risk items. Additionally, determine the need for additional seismic evaluations of buildings that may pose enough risk to warrant seismic retrofits. Include an evaluation of foundations of the District's portables as funding becomes available.			

2-Year Objectives Renton School District would need to review historical seismic data and, as warranted, conduct a seismic survey to understand the full needs as funds are available.	5-Year Objectives To be determine	Long-Term Objectives Increase life and safety projection by improving seismic standards
Implementation Plan/Actions As funds are available to implement the plan from seismic study		
Performance Measures Implement recommendation from seismic study		

Hazard Mitigation Strategy - Multi-Hazard

Lead POC Susanne Whitlock, Chief Of Support Services	Partner Points of Contact City Of Renton King County King County Emergency Management City of Renton Emergency Management Renton Regional Fire	Hazards Mitigated / Goals Addressed Multi-Hazard	Funding Sources and Estimated Costs District or Grants – Cost to be determined.
Strategy Vision/Objective Integrate the findings and action items in the mitigation plan into ongoing programs and practices for the district. Review emergency and evacuation planning to incorporate hazard and risk information from the mitigation plan. Whenever possible consider siting and locating new facilities away from high hazard areas. Ensure that new facilities are adequately designed to minimize risk from natural hazards.			

Mitigation Strategy

Utilize the district Hazard Mitigation plan when planning for new sites and/or modifying current structures to avoid locating structures in high hazard areas.

2-Year Objectives

Maintain, update and enhance facilities as funds are available.

5-Year Objectives

To be determined

Long-Term Objectives

Increase life and safety projection by improving district standards.

Implementation Plan/Actions

As funds are available to implement the plan to update, maintain and enhance facilities.

Performance Measures

Implement recommendations as needed with what funds are available and focus on preventative maintenance until further notice.

Hazard Mitigation Strategy - Landslide

Lead POC	Partner Points of Contact	Hazards Mitigated / Goals Addressed	Funding Sources and Estimated Costs
Susanne Whitlock, Chief Of Support Services	City Of Renton King County King County Emergency Management City of Renton Emergency Management Renton Regional Fire	Landslide	District or Grants – Cost to be determined.

Strategy Vision/Objective

Monitor Talbot Hill Elementary School for land/building changes and/or additional damage due to collapsed/abandoned coal mines.

Mitigation Strategy

Repair parking lot/grounds damage from collapsed/abandoned coal mines at Talbot Hill Elementary School

Continue to monitor building, grounds and parking areas for changes related to collapsed/abandoned coal mines.

2-Year Objectives

Make repairs to urgent affected areas

5-Year Objectives

To be determined

Long-Term Objectives

Increase life and safety projection by improving district standards.

Implementation Plan/Actions

As funds are available, repair and continue maintenance of damage to Talbot Hill building and grounds due to collapsed/abandoned mines.

Performance Measures

Parking lot/grounds repairs will begin at Talbot Hill Elementary summer of 2020 with completion by fall 2020.