



January 14, 2020

Spring Branch ISD
Bunker Hill Elementary

Project Advisory Team Meeting #1





Spring Branch ISD



- **Travis Stanford**
- **Kris Drosche**
- **Dana Johnson**

Associate Superintendent for Operations
Planning & Construction Project Manager
Bunker Hill Elementary School Principal

Stantec Architects



- **Jennifer Henrikson**
- **Tracy Eich**
- **Gretchen Diesel**
- **Gary Dunn**

Principal - Architect
Principal - Architect
Sr. Associate – Interior Design
Project Manager - Architect



Meeting Agenda:

- **Introductions / PAT Charge – 5 Minutes**
- Project Overview – 5 Minutes
- PAT Engagement: Visioning – 30 Minutes
- Program Overview – 5 Minutes
- Site Analysis/ Overview – 5 Minutes
- PAT Engagement: Site Diagramming – 35 Minutes
- Closing Remarks – 5 Minutes

BHE Project Advisory Team (PAT) - Charge

OVERVIEW

A Project Advisory Team (PAT) will be chartered for the planning of a replacement for **Bunker Hill Elementary School** under the school's project in the 2017 Bond Program.

Each PAT is an advisory ad hoc committee, representing the various stakeholders of a school community. As such, the PAT is chartered for a defined purpose and time and holds no statutory authority.

The goal of the PAT is to ensure that parents, staff and community members have the opportunity to take part in the planning and design of new schools.

The PAT members will serve as communicators to and from the community during the schematic design and development phases of the project and participate in discussions that will lead to recommendations. The PAT concludes its work once construction begins.

BHE Project Advisory Team (PAT) - Charge

CHARGE

Each Project Advisory Team's (PAT) members are charged with **providing input into planning and design development of the replacement of Bunker Hill Elementary School.**

The PAT will meet in a series of meetings from initial planning through design to the start of construction.

The PAT will work collaboratively and cooperatively with the architect and SBISD Project Manager **to conceptualize, develop and refine the project's goals and design** to ensure meeting the project scope and schedule as defined in the 2017 Bond Program.

The PAT will **reach a proposed recommendation through consensus.**

Any concerns identified by the PAT members should immediately be brought to the attention of the SBISD Project Manager.

The PAT will advise on recommendations regarding the interior and exterior appearance of the replacement of Bunker Hill Elementary School.

BHE Project Advisory Team (PAT) - Charge

CHARGE (continued)

These recommendations will be presented by the project's architects:

- 1) to the **Superintendent of Schools**, and based on approval from the Superintendent,
- 2) to the **Board of Trustees** for their approval.

All recommendations must be in alignment with the District's Educational Specifications and Design and Construction Standards.

The Board of Trustees may act upon the recommendations developed with PAT input by approving, amending, altering or not approving all or any part of the recommendations.

Areas of focus from which the PAT should refrain include recommendations regarding school programs, policies and procedures, boundaries of district facilities, instructional arrangements and/or educational pedagogy decided upon and/or subject to District, State and Federal laws.

Project Advisory Teams are essential participants in the planning and design process. Team members are asked to agree to participate in various meetings throughout the process.

PAT Engagement

22 Participants



PAT Committee Composition

Principal
Assistant Principal
CIT
CIT
CIT
CIT
CIT
CIT
CIT
CIT
CIT
CIT
CIT
Parent by Lottery
Parent by Lottery
Staff by Lottery
Staff by Lottery
HOA Representative
HOA Representative
HOA Representative
HOA Representative
Village Representative

13 = Bunker Hill ES
Staff + CIT + PTA President

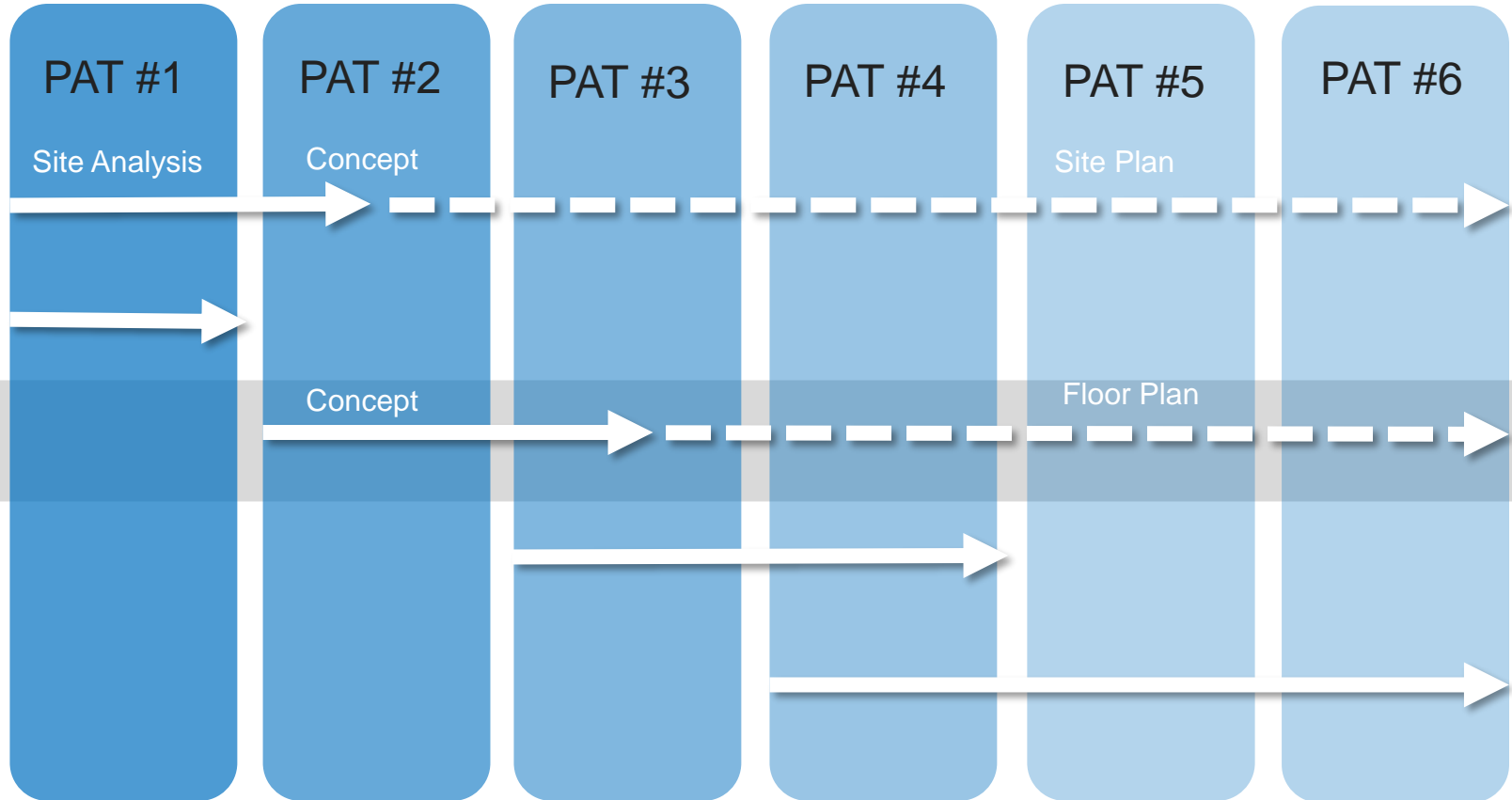
04 = Lottery
Parent + Staff

05 = Community
HOA + Bunker Hill Village

PAT Engagement: Process Overview

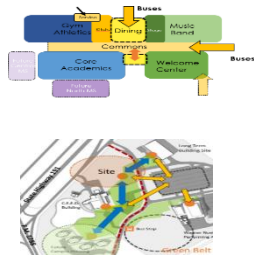
January 2020

- 1 Site Influences
- 2 Program Space Types
- 3 Functional Relationships
- 4 Space Type Attributes
- 5 Architectural Expression

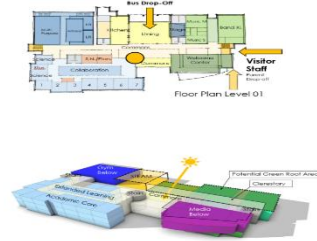


PAT Consensus - May 2020

CONCEPTUALIZE



EXPLORE



DEVELOP



REFINE





Meeting Agenda:

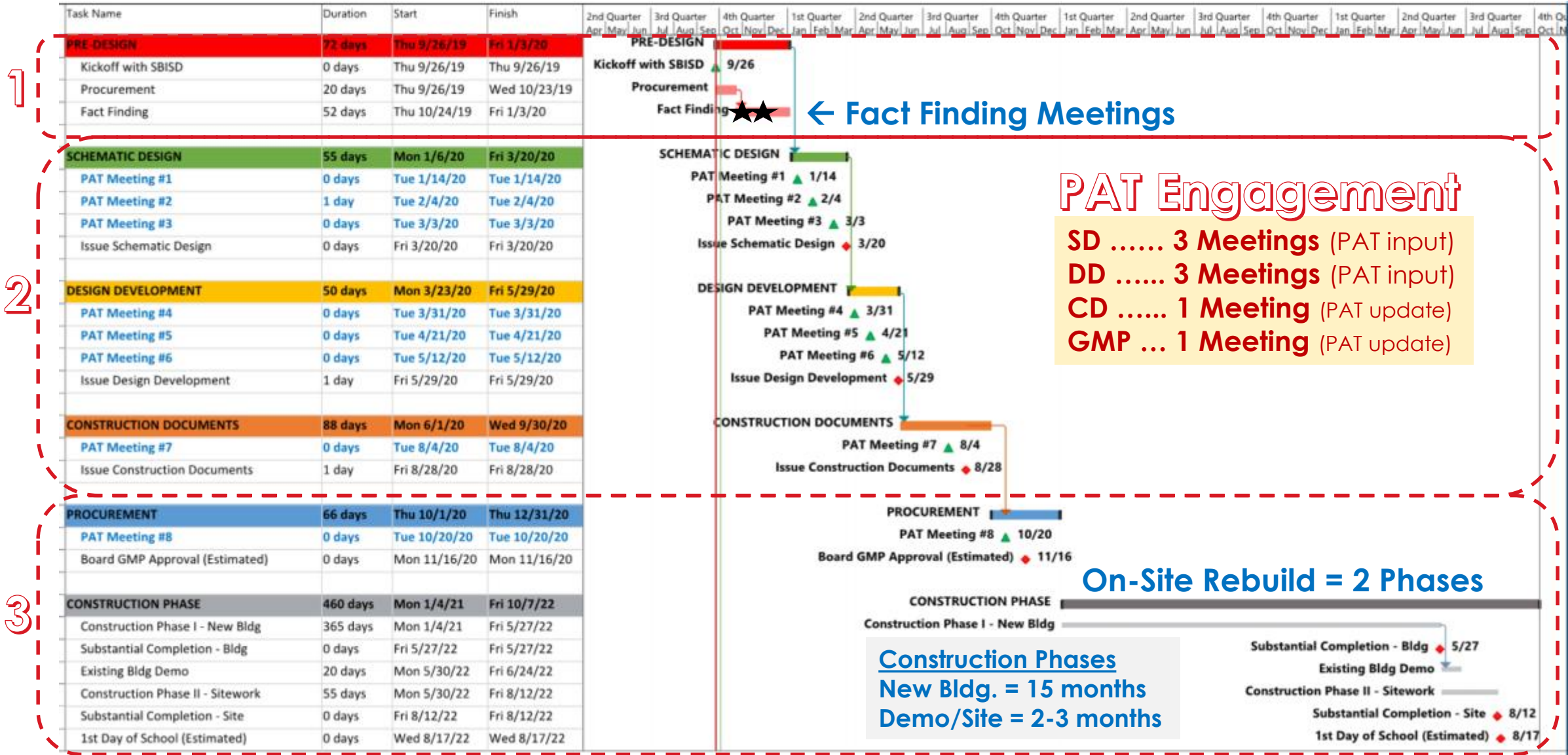
- Introductions / PAT Charge
- **Project Overview**
- PAT Engagement: Visioning
- Program Overview
- Site Analysis/ Overview
- PAT Engagement: Postcards from the Future
- Closing Remarks



Project Scope:

- **Replacement of Bunker Hill Elementary School** with new building
- **On Site** Transition
- **Approx. 102,000 SF** per SBISD Educational Specifications
- **18-20 month** total construction period

Process = Fact Finding → Design/Documents → Construction



PAT Engagement

- SD 3 Meetings (PAT input)
- DD 3 Meetings (PAT input)
- CD 1 Meeting (PAT update)
- GMP ... 1 Meeting (PAT update)

On-Site Rebuild = 2 Phases

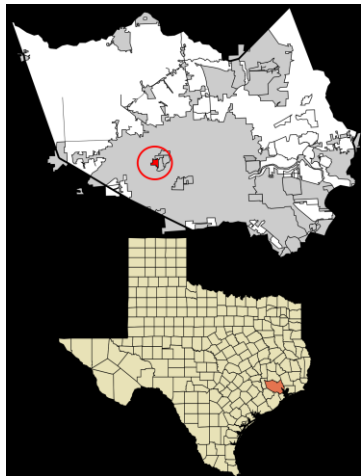
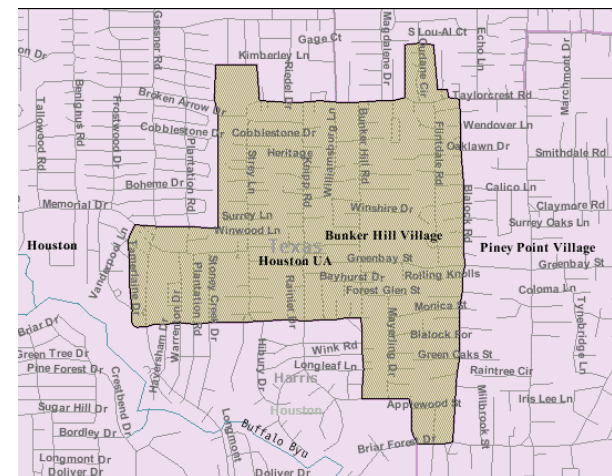
Construction Phases
 New Bldg. = 15 months
 Demo/Site = 2-3 months

Substantial Completion - Bldg 5/27
 Existing Bldg Demo
 Construction Phase II - Sitework
 Substantial Completion - Site 8/12
 1st Day of School (Estimated) 8/17



Meeting Agenda:

- Introductions / PAT Charge
- Project Overview
- **PAT Engagement: Visioning**
- Program Overview
- Site Analysis/ Overview
- PAT Engagement: Site Diagramming
- Closing Remarks



Village

Setting



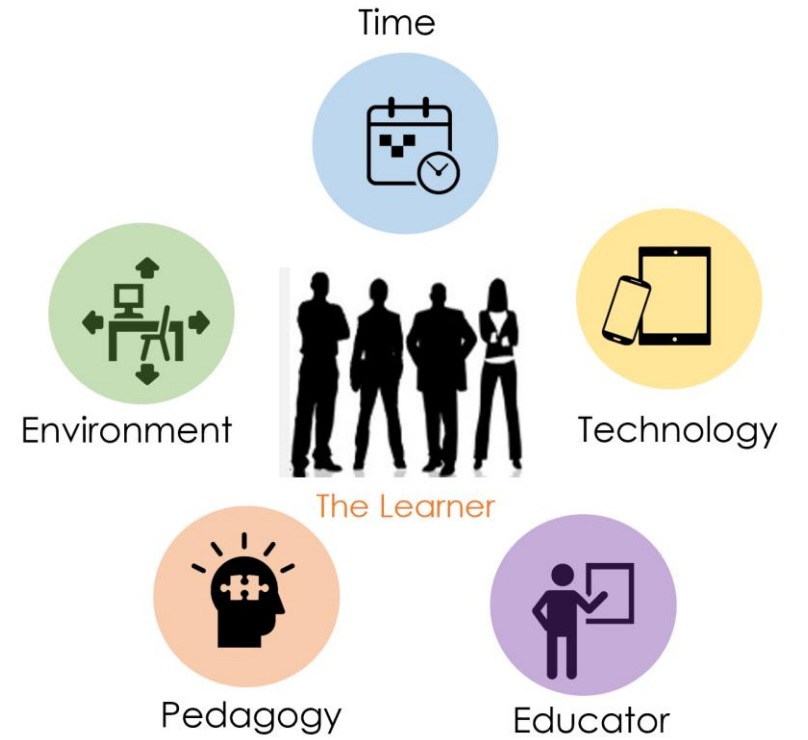
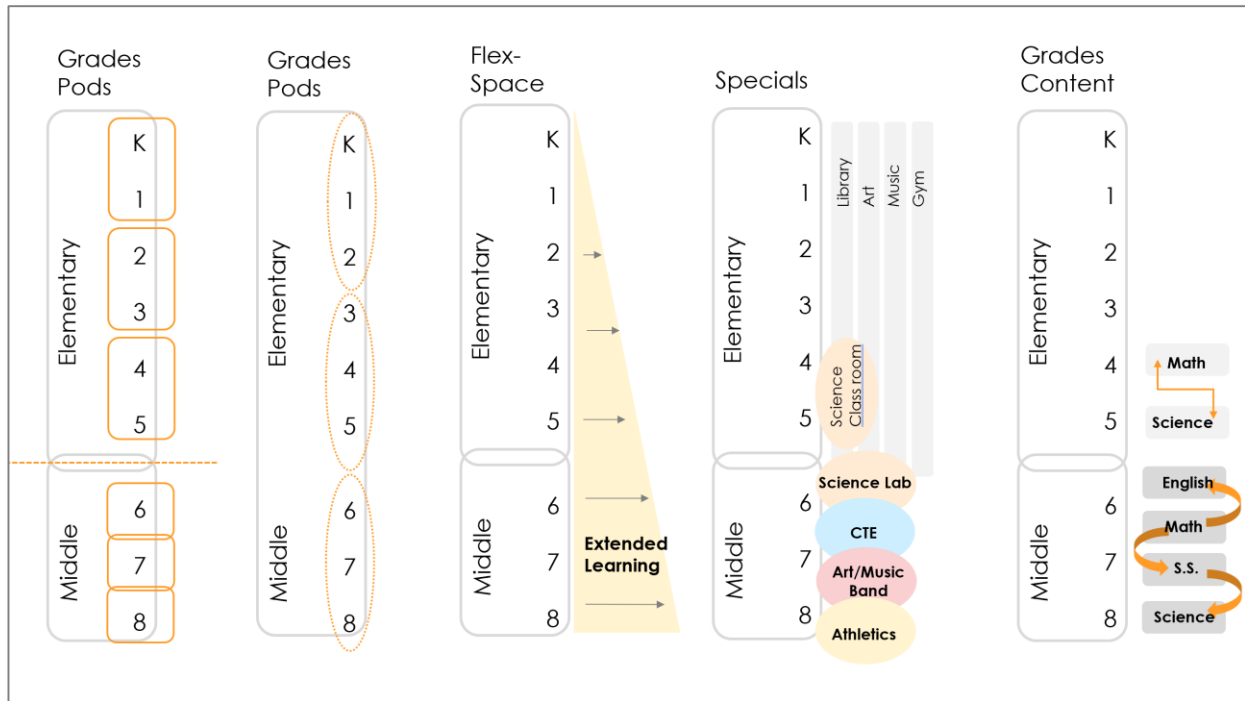
A dark blue rectangular box containing the white text 'Q/A' in a bold, sans-serif font.

Design Vision

1. Share **three words** which **describe the personality & character** of Bunker Hill Elementary.
2. Describe what makes Bunker Hill Elementary **uniquely Bunker Hill?**
3. What is your **favorite aspect of the existing campus** you don't want to lose?
What is your **least favorite aspect of the existing campus** that needs to change?



elementary school | middle/junior school | high school



A dark blue rectangular box containing the white text 'Q/A' in a bold, sans-serif font.

Educational Vision

1. Describe how the **building can help support** both **Student** engagement + **Community** activities.
2. Name **three things** that **help create a modern 21st Century Teaching & Learning** environment that helps to support and foster a successful program.
3. Describe how **Teaching & Learning has changed** at Bunker Hill Elementary since the 1950's.

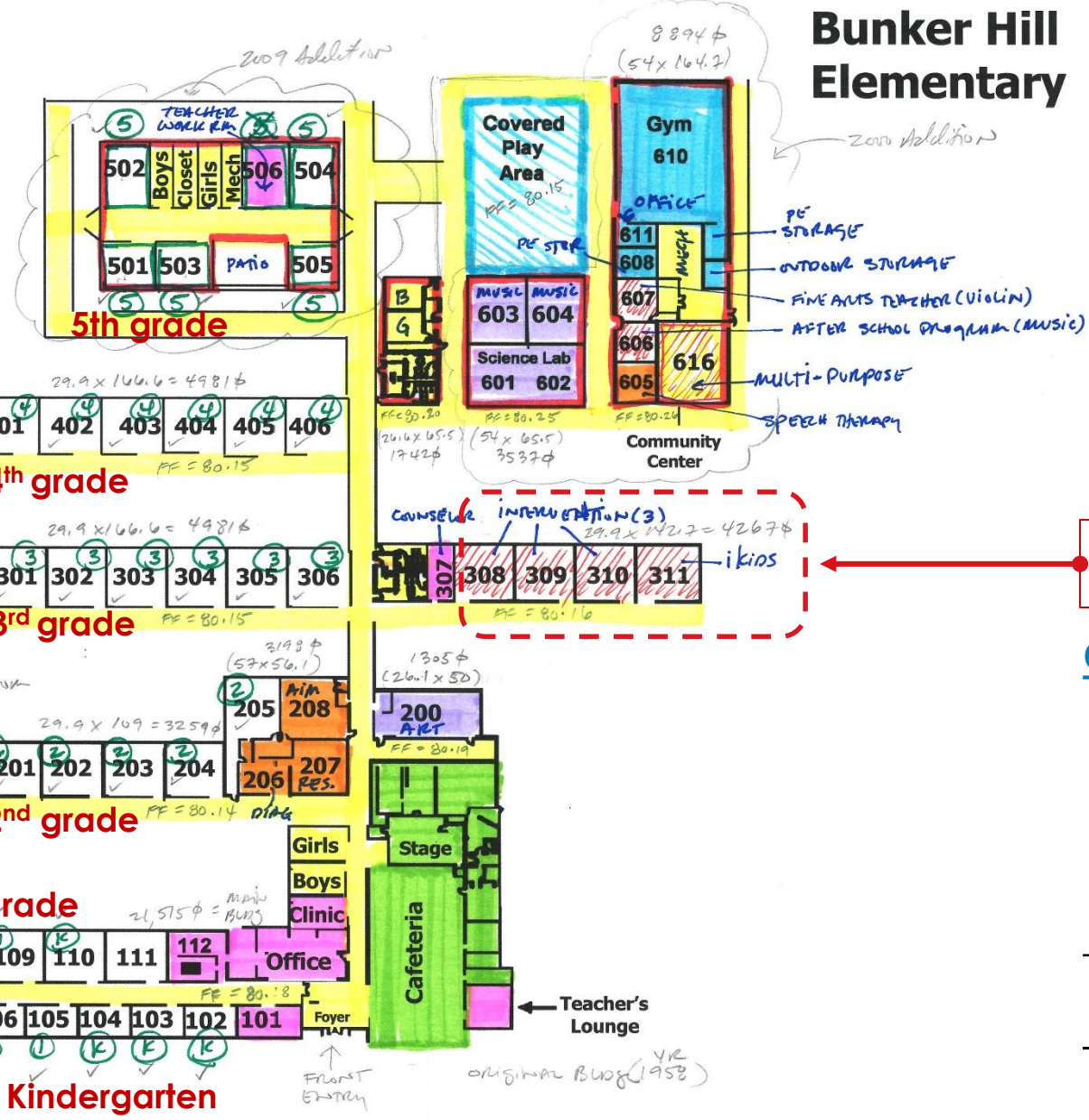


Meeting Agenda:

- Introductions / PAT Charge
- Project Overview
- PAT Engagement: Visioning
- **Program Overview**
- Site Analysis/ Overview
- PAT Engagement: Site Diagramming
- Closing Remarks

Bunker Hill Elementary

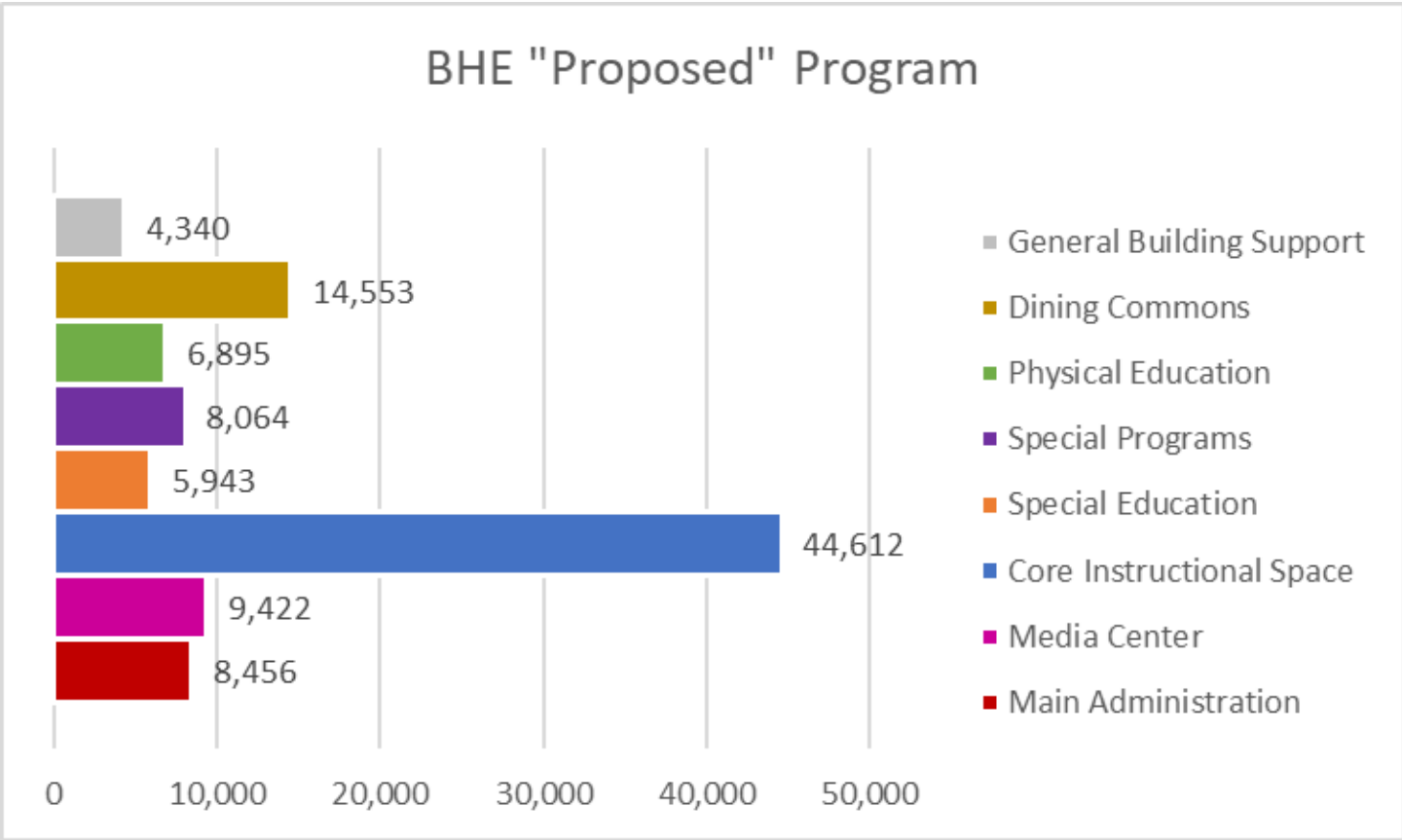
SUNSHY AREAS
 21 515 = 100 wing / class
 6 183 = 200 wing
 1 212 = 200 ART
 6 400 = LIBRARY
 4 550 = 300 wing
 4 550 = 400 wing
 3 980 = 300 wing
 1 707 = RE BUNG
 3 537 = MUSIC/SCIENCE
 8 894 = Gym Bldg
 62 528 TOTAL



4 Classrooms
 "Under Utilized / Extra Programs"

Classroom Quantity

- 5 = Kindergarten classrooms
- 5 = 1st grade classrooms
- 5 = 2nd grade classrooms
- 4 = 3rd grade classrooms
- 5 = 4th grade classrooms
- 5 = 5th grade classrooms
- 29 Classrooms Total (Current Use)**
- +4 = (Alt. Use) Classrooms
- 33 Classrooms Total (Max)**



BHE Test-Fit Program Summary

Total Bldg. = 102,285 GSF

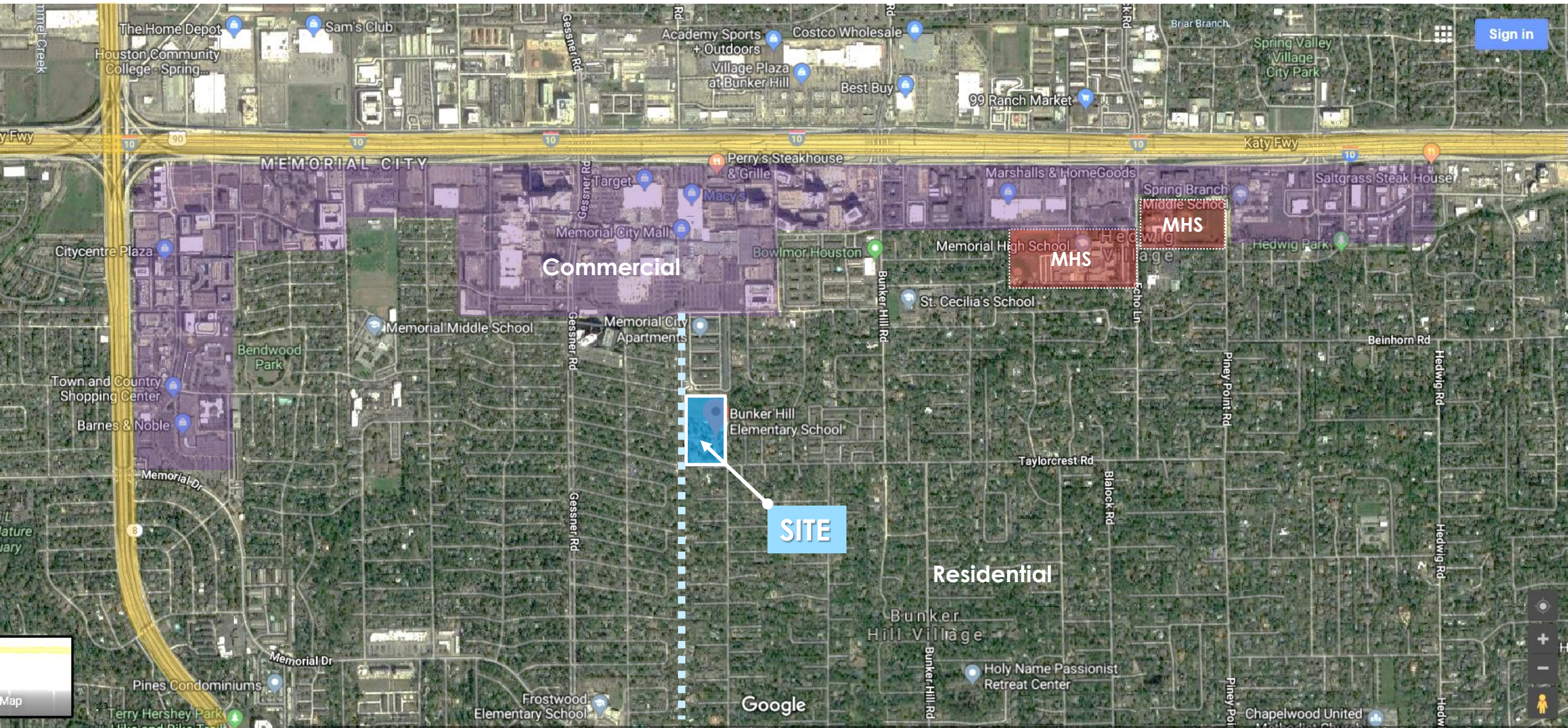
32 Classrooms Total

- 5 = PK/Kinder
 - 5 = 1st grade
 - 5 = 2nd grade
 - 6 = 3rd grade
 - 6 = 4th grade
 - 5 = 5th grade
- 32 Classrooms Total**



Meeting Agenda:

- Introductions / PAT Charge
- Project Overview
- PAT Engagement: Visioning
- Program Overview
- **Site Analysis/ Overview**
- PAT Engagement: Site Diagramming
- Closing Remarks



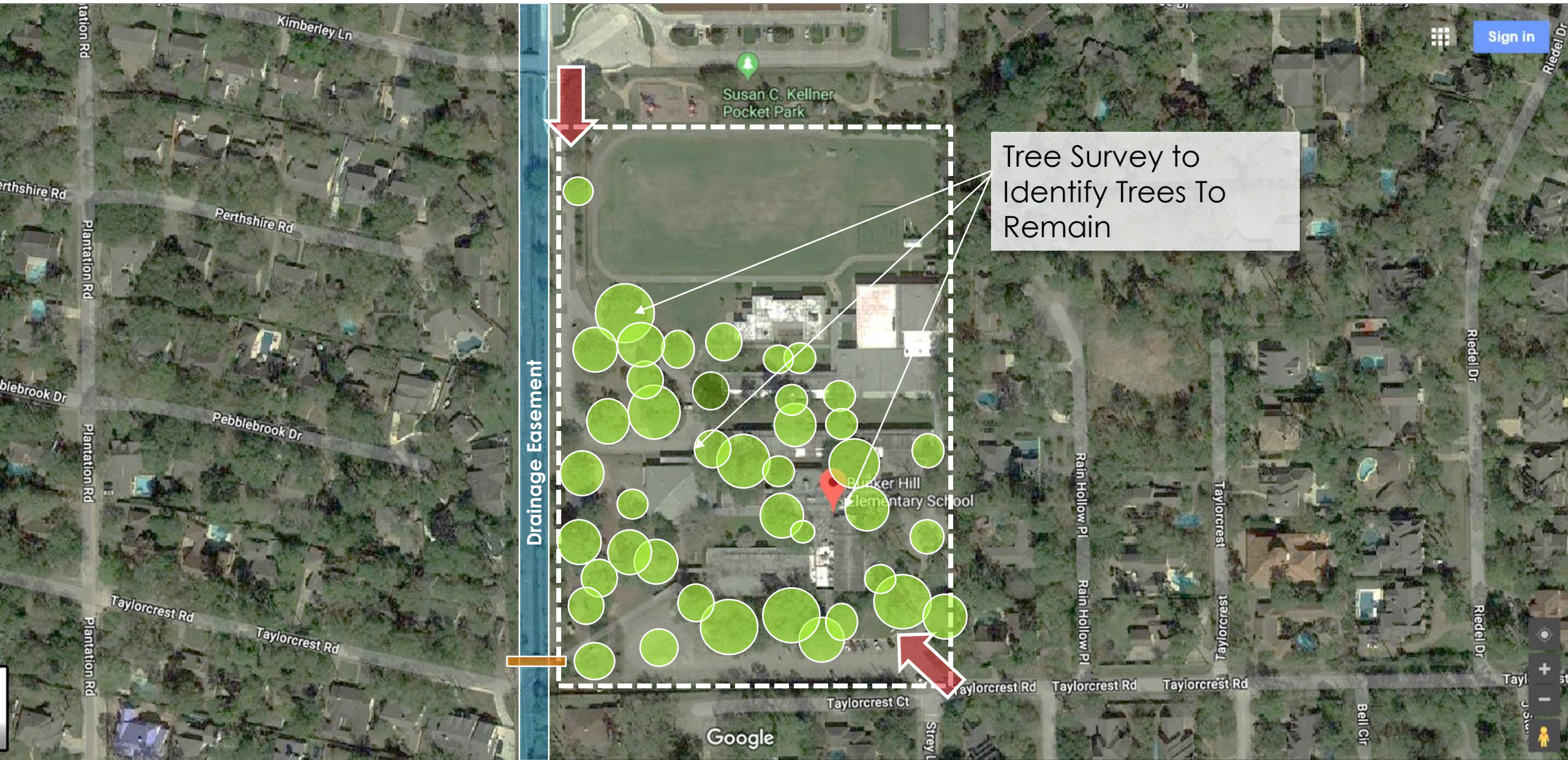
Bunker Hill ES – Existing Conditions / Constraints

Project Location



Bunker Hill ES – Existing Conditions / Constraints

Project Site



Bunker Hill ES – Existing Conditions / Constraints

Site Parameters



Identify Potential New Building Zones

- Open Field Zone
- Bus Drop-Off Zone
- Play Ground Zone

Bunker Hill ES – Existing Conditions / Constraints

Site Parameters



Zone for Proposed Design Options

Drainage Easement

Open Field Zone

Bus Drop Off Zone

Play Ground Zone

Library

5th. Grade

Gym Science

Bunker Hill Elementary School

Google

Sign in

Bunker Hill ES – Existing Conditions / Constraints

Site Parameters



Meeting Agenda:

- Introductions / PAT Charge
- Project Overview
- PAT Engagement: Visioning
- Program Overview
- Site Analysis/ Overview
- **PAT Engagement: Site Diagramming**
- Closing Remarks

PAT Site Plan Diagramming

Engagement Activity #2: 35 mins

10 minutes of Group/Table work (5-6 tables)

25 minutes of Reporting out (5 mins max. per table)

Site Plan “Anchors” for Design Diagram



1. Administration

- Parent Drop-off / Parking
- Front Main Entry
- Administration



2. Library / Media Center

- Central to Learning Communities
- Front Entry
- After-hour Use



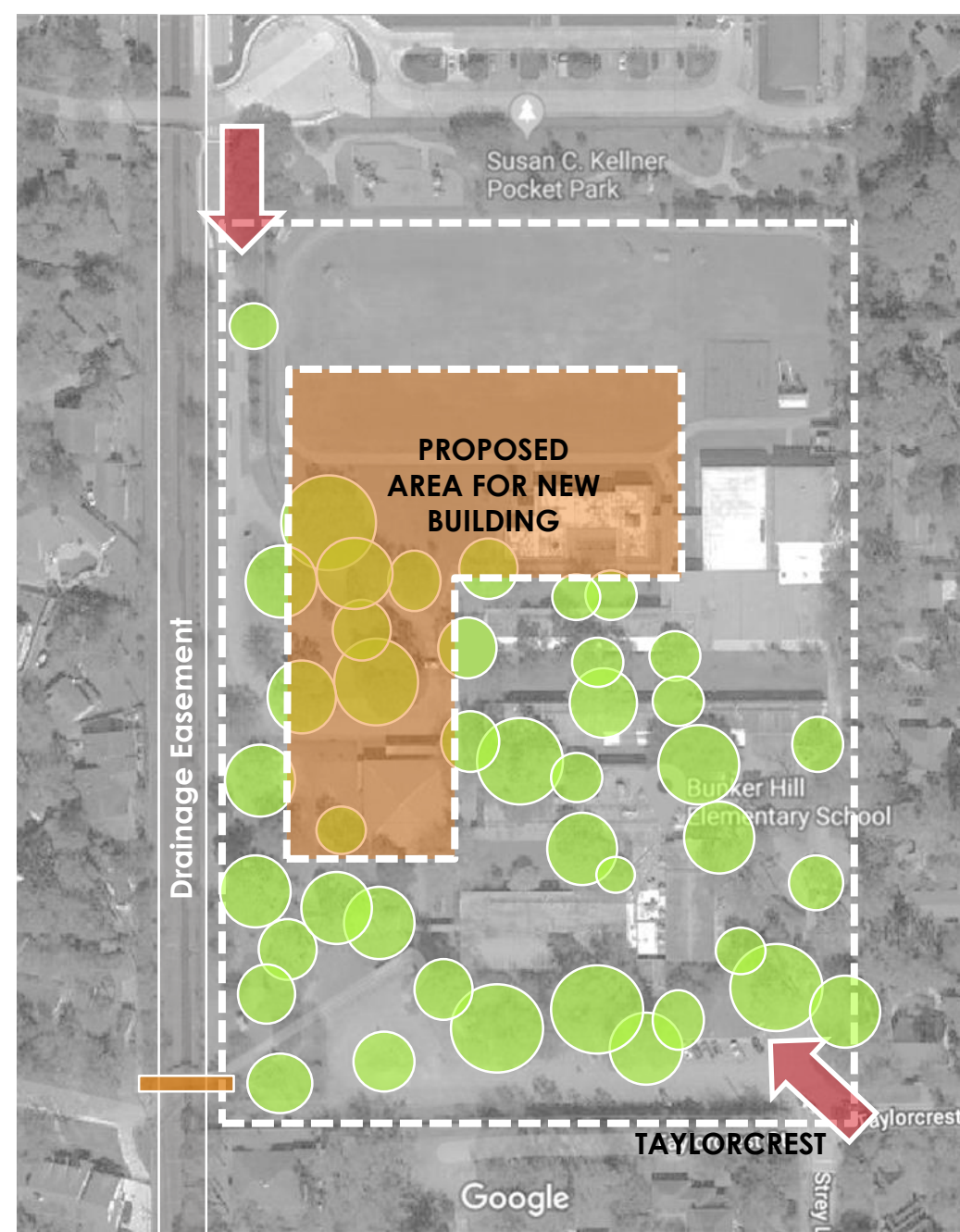
3. Dining Commons

- Parent Drop-off
- Front Entry
- After-hour Use



4. Activity Gym

- PE Space
- Outdoor Covered Play
- Outdoor Play Fields + Play Equipment





Meeting Agenda:

- Introductions / PAT Charge
- Project Overview
- PAT Engagement: Visioning
- Program Overview
- Site Analysis/ Overview
- PAT Engagement: Site Diagramming
- **Closing Remarks**