



Welcome to Curriculum Night

Crystal Lake South High School

Purpose



- Parents/Students will understand the intricacies of scheduling classes at Crystal Lake South High School
- Parents/Students will outline a four-year plan designed to meet post-secondary (college, vocational, military) goals.
 - After 8th grade, students drive the course selection process.
- Parents/Students will understand the academic and post-secondary supports provided through Student Services



The Basics

Grad Requirements,
College Admission
and the CLS Schedule

Graduation Requirements vs. College Admissions

Graduation Requirements	
English	4 credits
Math	3 credits
Science	2 credits
Social Science	2 credits
PE	1.75 credits
Health	.5 credits
Computers	.5 credits
Consumer Ed.	.25 credits
Driver's Ed. Classroom	.25 credits
Electives	6.0 credits
Total Credits	20.25

College Admissions*	
English	4
Math	4
Science	3
Social Science	3
Fine Arts or Language	2

**The college admissions requirements listed here are generally representative of four-year selective colleges. For specific details to specific colleges, you will need to refer to the admissions requirements for that college.*



Classes that meet your graduation requirements:



Classes that meet the Consumer Education requirements:

Intro to Business: (one semester) **9th/10th**

AP Economics:(one year)10th/11th/12th

Inter. Occupational Relations/Work Program
(second semester)10th/11th/12th

Adult Living (one semester)11th/12th

Consumer Ed (one quarter)11th/12th

Classes that meet the Computer Education requirements:

Tech Ed I:(one semester) **9th/10th/11th/12th**

AP Computer Science Principles:(one year)
9th/10th/11th/12th

AP Computer Science:(one year)**9th/10th/11th/12th**

Visual Art and Technology (one
semester)**9th/10th/11th/12th**

(H) Dual Credit Computer Business Application:(one
semester)**9th/10th/11th/12th**

(H) PLTW Engineering Design (one
year)**9th/10th/11th/12th**

Semester One		Semester Two	
Period 1	English	Period 1	Elective 1
Period 2	Math	Period 2	PE
Period 3	Science	Period 3	Science
Period 4	Study Hall: Potential 6th Major/Seminar /Interventions	Period 4	Study Hall: Potential 6th Major/Interven tions /
Period 5	Elective 1	Period 5	English
Period 6	Elective 2	Period 6	Math
Period 7	Lunch	Period 7	Lunch
Period 8	PE	Period 8	Elective 2
Period 9	Study Hall (Choir/Band)	Period 9	Study Hall (Choir/Band)

Our Schedule



Key Points:

- We have a 9 period day.
- All students enroll in 5 core courses. A core course is a .5 credit class per semester.
- All students enroll in a PE.
- All students have access to a lunch period.
- Band/Choir are not considered in the 5 core classes
- Class periods may change from semester to semester due to a variety of reasons (singletons, elective differences)

How much is too much for my child?

Leave room for the fun
in high school



The 6th Major	
Period 1	English
Period 2	Math
Period 3	Science
Period 4	Seminar/SH 4 days a week
Period 5	Elective 1
Period 6	Elective 2
Period 7	Lunch
Period 8	Potential 6th Major
Period 9	PE

The 6th Major + Band OR Choir	
Period 1	English
Period 2	Math
Period 3	Science
Period 4	Elective 1
Period 5	Lunch
Period 6	Elective 2
Period 7	PE 4x a week/1 period seminar
Period 8	Band or Choir (Pass / No Credit)
Period 9	6th Major

The 6th Major + Band and Choir	
Period 1	English
Period 2	Math
Period 3	Science
Period 4	Choir
Period 5	Elective 1
Period 6	Elective
Period 7	PE 4x a week/1 period seminar
Period 8	Band (Pass / No Credit)
Period 9	6th Major



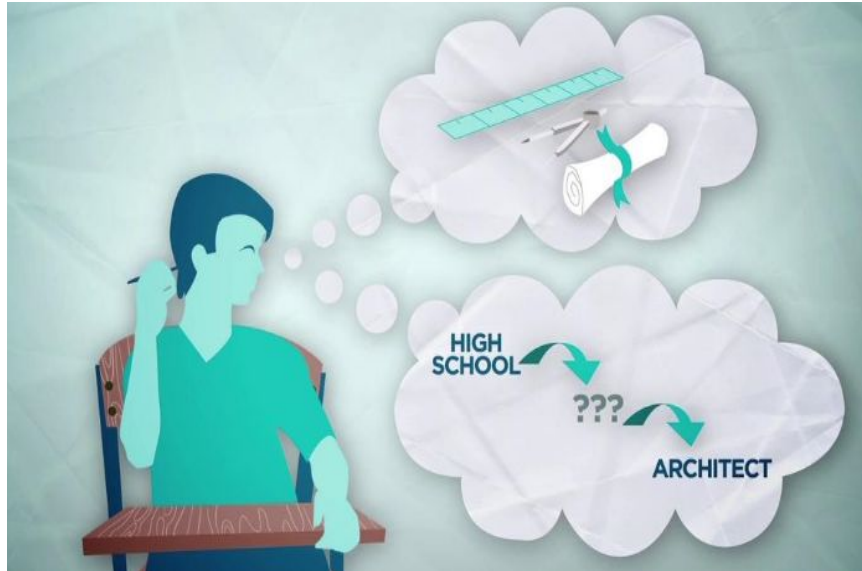
Understanding the 4 year Plan

Next steps in outlining the
four-year plan



NAVIANCE

course planner



Manage Course Plan

Naviance High School
Foundation High School Program[®]

Status: IN PROGRESS

Credits Required: 26 | In Your Plan: 17 | Plan Still Needs: 9 | Completed: 0

Last Edited: 08/27/2018 09:58 AM [View Actions](#)

Add / Edit Courses in Your Plan
Add courses in order to submit, scan, or print this plan. [Submit For Approval](#)

Career Cluster: Science, Technology, Engineering & Mathematics
Pathway: STEM-CTE

Plan: Foundation; Career Cluster: Science, Technology, Engineering & Mathematics; Pathway: STEM-CTE

Creer Cluster: Science, Technology, Engineering & Mathematics / STEM-CTE 4/4 credits [Edit Courses](#)

Career Cluster: Arts & Humanities / Social Studies 5/5 credits [Edit Courses](#)

REQUIREMENTS	9th Grade	10th Grade	11th Grade	12th Grade
English 4 Credits 4 Credits in Plan Edit Courses	English 9 1 credit	English 10 1 credit	English 11 1 credit	English 12 1 credit
Science 4 Credits 4 Credits in Plan Edit Courses	CAREER CLUSTER Digital Electronics 1 credit	CAREER CLUSTER Biotechnology I 1 credit	CAREER CLUSTER Robotics I 1 credit	CAREER CLUSTER Forensic Science 1 credit
Mathematics 4 Credits 4 Credits in Plan Edit Courses	Algebra I 1 credit	Geometry 1 credit	Algebra II 1 credit	AP Calculus 1 credit
Social Studies 4 Credits 4 Credits in Plan Edit Courses	Social Studies 1 credit	Social Studies 1 credit	Social Studies 1 credit	Social Studies 1 credit
World Languages & Cultures 3 Credits 6 Credits in Plan				

School Guide to Career Clusters

Postsecondary Plan
4-year college

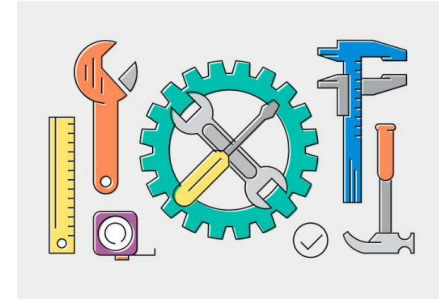
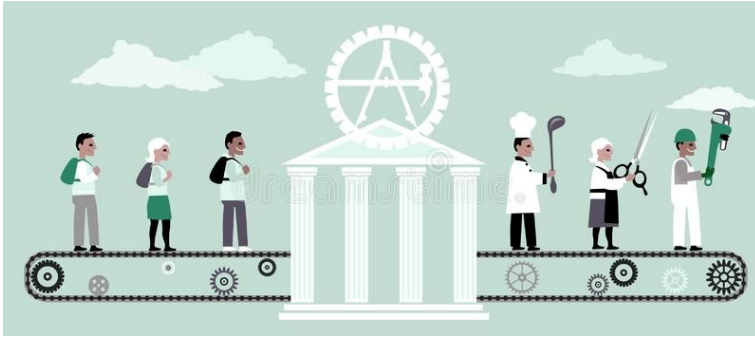
Your Assessments

Career Cluster Finder
Your Top Clusters
Agriculture, Food and Natural Resources
Arts, Audio/Video Technology and Communications
Transportation, Distribution and Logistics

Favorite Career Clusters
Science, Technology, Engineering & Mathematics

Colleges I'm Interested In
George Mason University Fairfax, VA
Academy of Art University San Francisco, CA

Trade School



Military



2-year college

HS Graduation Four-Year Plan



Freshman	Sophomore	Junior	Senior
English	English	English	English
Math	Math	Math	<i>Elective</i>
Science	Science	<i>Elective</i>	<i>Elective (Computers)</i>
<i>Elective</i>	Social Science	US History	<i>Elective</i>
<i>Elective (Consumer Ed)</i>	<i>Elective</i>	<i>Elective</i>	<i>Elective</i>
	Driver Education		

Key Points

- Students must take 1 year of Social Science before completing sophomore year.
- Students must take 1 semester of a Computer Course, Drivers Ed the class and meet the Consumer Ed Requirement

Student 1: 2 Year Open Enrollment (MCC, Wyo Tech, UTI), Autos



Freshman	Sophomore	Junior	Senior	Summer
English	English	English	English	Private Dr. Ed.
Math	Math	Math	Sem in Autos <i>(elective)</i>	
Science	Science	US History	Work Program <i>(elective)</i>	
Social Science	Woods II / Metals I <i>(elective)</i>	Autos II <i>(elective)</i>	W. P. Job <i>(elective)</i>	
Woods I / Small Engines <i>(elective)</i>	Autos I / Tech Ed I <i>(elective)</i>	Work Program <i>(elective)</i>		
		W. P. Job <i>(elective)</i>		

Career and Technical Education Certificate Programs at MCC with elective options at CLS:

- Autos
- Business
- Culinary
- Digital Media
- Early Childhood
- Manufacturing
- Marketing

- Required Class
- Elective
- 6th Major / Summer School

4 Year College Plan



WESTERN
ILLINOIS
UNIVERSITY



THE
UNIVERSITY OF
ILLINOIS
AT
CHICAGO



Selective Enrollment Four-Year Planning



- What is a 6th Major and how are they assigned

Freshman	Sophomore	Junior	Senior	Summer
English	English	English	English	
Math	Math	Math	<i>Math (elective)</i>	
Science	Science	Science (elective)	<i>Elective</i>	Consumer Ed
<i>Elective</i>	<i>Elective</i>	<i>Elective</i>	<i>Elective</i>	US History
<i>Social Science</i>	<i>Elective (Computers)</i>	<i>Elective</i>	<i>Social Science (elective)</i>	
	High Interest Elective		High Interest Elective	

What is a 6th Major?

- An overload of classes
- Takes the place of a study hall
- Is NOT guaranteed
- Allows you to take extra coursework during high school

Summer School Options:

- VAT (computers)
- Consumer Ed.
- US History
- Driver's Education

NO AP/HONORS offered in S.S.

Student 2: 4 Year Selective Enrollment (Western, Eastern, UIC) Art



Freshman	Sophomore	Junior	Senior	Summer
English	English	English	English	VAT (Computer Req)
Math	Math	Math	Math <i>(elective)</i>	
Science	Science	Science <i>(elective)</i>	Consumer Ed / Science <i>(elective)</i>	
Art <i>(elective)</i>	Social Science	US History	Social Science <i>(elective)</i>	
Language <i>(elective)</i>	Language <i>(elective)</i>	Art <i>(elective)</i>	AP Art <i>(elective)</i>	
	Art			

Selective Criteria

- 4 Years English
- 4 Years Math
- 3 Years Science
- 3 Years Social Science

Advanced Placement

- This student enrolled in 1 AP course during high school. The course was in an area of HIGH INTEREST and was geared towards the college major.

3.1 gpa: 24 ACT
1160-1190 SAT

- Required Class
- Elective
- 6th Major / Summer School

Student 3: 4 Year Selective Enrollment (IL State, Northern) Business



Freshman	Sophomore	Junior	Senior	Summer
English H	English H	AP English	AP English	US History
Math	Math H	Math	Math <i>(elective)</i>	Driver's Education
Science	Science	Science <i>(elective)</i>	Business H <i>(elective)</i>	
Computers / Consumer Ed <i>(electives)</i>	Social Science	Business <i>(elective)</i>	Social Science <i>(elective)</i>	
Language <i>(elective)</i>	Language <i>(elective)</i>	Language <i>(elective)</i>	Language <i>(elective)</i>	
			Science	

Selective Criteria

- 4 Years English
- 4 Years Math
- 3 Years Science
- 3 Years Social Science

Advanced Placement

- This student enrolled in 2 AP courses during high school. The courses were in an area of HIGH INTEREST and ACADEMIC STRENGTH.

3.2 gpa:25 ACT
1200-1230 SAT

- Required Class
- Elective
- 6th Major / Summer School

Very Selective 4 Year College Planning



Very Selective Four-Year Planning



Freshman	Sophomore	Junior	Senior	Summer	Transfer Coursework
English	English	English	English		Transfer Class 1
Math	Math	Math	<i>Math (elective)</i>		Transfer Class 2
Science	Science	<i>Science (elective)</i>	<i>Science (elective)</i>	Consumer Ed	
Elective	Elective (Computers)	<i>Language (elective)</i>	<i>Language (elective)</i>	US History	
Elective	Social Science	<i>Elective</i>	<i>Social Science (elective)</i>		
	High Interest Elective		High Interest Elective		

Are transfer credits allowed?

- 1.0 credit per year
- 4.0 credits max
- Must be approved in advance

SB Policy 6.310

Student 4: 4 Year Very Selective Enrollment (Loyola, Bradley, DePaul) PLTW (Engineering)

Freshman	Sophomore	Junior	Senior	Summer
English H	English H	AP English	English	Private Dr. Ed
Math H	Math H	AP Math	AP Math <i>(elective)</i>	
Science H	Science H	AP Science	AP Science <i>(elective)</i>	
Language <i>(elective)</i>	Language <i>(elective)</i>	Language H <i>(elective)</i>	Language H <i>(elective)</i>	
PLTW H (Computers) <i>(elective)</i>	PLTW H <i>(elective)</i>	US History	Consumer Ed / Social Science <i>(elective)</i>	
Social Science 1 semester	Social Science 1 semester	PLTW H	PLTW H	

Very Selective Criteria




- 4 Years English
- 4 Years Math
- 4 Years Science
- 3 Years Social Science

Advanced Placement

- 1 AP English
- 2 AP Math
- 2 AP Science

This student enrolled in 5 AP classes. The courses were in areas of HIGH INTEREST and was connected with the college major.

3.7 gpa: 31 ACT
1420-1440 SAT

-  Required Class
-  Elective
-  6th Major / Summer School

Student 5: 4 Year Most Selective Enrollment (Northwestern, U of Chicago)



STEM (Science Technology Engineering Math)

Freshman	Sophomore	Junior	Senior	Summer
English H	AP English	AP English	AP English	Private Dr. Ed.
Math H	Math H	AP Math	AP Math <i>(elective)</i>	SS Consumer Education
Science H	Science H	AP Science	AP Science <i>(elective)</i>	
Language <i>(elective)</i>	Language Acc <i>(elective)</i>	Language H <i>(elective)</i>	AP Language <i>(elective)</i>	
AP Social Science	AP Social Science <i>(elective)</i>	AP Fine Arts <i>(elective)</i>	English <i>(elective)</i>	
Business/ PLTW H (computer)	AP US History		AP Math	

Most Selective Criteria

- 4 Years English
- 4 Years Math
- 4 Years Science
- 3 Years Social Science

Advanced Placement

- 2 AP English
- 2 AP Math
- 2 AP Science
- 2 AP Social Science
- 3 Years Social Science
- 2 Addt. AP Electives

4.8 gpa:34+ ACT
1520-1550 SAT

- Required Class
- Elective
- 6th Major / Summer School



Welcome Class of 2024

See you at 8th Grade Night
January 16th, 2020
5pm and 6:45pm

